

www.ifrc.org  
Saving lives,  
changing minds.

## Emergency Plan of Action (EPoA) Tunisia: Forest fire

 International Federation  
of Red Cross and Red Crescent Societies

<b>DREF n° MDRTN006</b>	
<b>Date of issue: 10 August 2017</b>	<b>Expected timeframe: 3 months</b>
<b>DREF allocated: CHF 106,491</b>	
<b>Total number of people affected: 2,000</b>	<b>Number of people to be assisted: 1,000</b>
<b>Host National Society presence: 120 volunteers and 10 staff</b>	
<b>Red Cross Red Crescent Movement partners actively involved in the operation: IFRC</b>	
<b>Other partner organizations actively involved in the operation: Civil Protection, National Guard, Ministry of Education, Ministry of Health, Bizerte Governorate</b>	

### A. Situation analysis

*This document has been re-published due to a calculation error in the original document. The total approved allocation is CHF 106,491*

#### Description of the disaster



Current dry and hot weather conditions in Tunisia are considerably increasing the risk for fires. Hot winds from the south contributes to worsen the situation, spreading easily any fire outbreak to cause widespread destruction. On the 31 July, a fire outbreak in Jendouba Governorate (North-West region of the country) the delegations of Ain Draham and Fernana resulted in the destruction of houses displacing around 500 persons, with the families currently being in a very vulnerable situation without any shelter.

From that date forest fires extended to other Governorates in Tunisia, particularly in Bizerte. In the last 24 hour and according to Tunisian Red Crescent (TRC) team in site, the fire was extended to affect considerably the region of Bizerte (North region of the country) in Sejnane and Ghezala delegations. More than 120 families have been evacuated and placed in a transitional shelter managed by TRC. The situation worsens and an emergency operation is in progress.

Most of the 500 affected families are being sheltered within the local community, staying with relatives, neighbours, colleagues and other acquaintances. Some 70 families in Bizerte were temporarily sheltered in a public school and have since been moved to a transitional shelter run by the authorities.



Fire destroys house in Khmairia – Ain Draham (Photo: TRC)

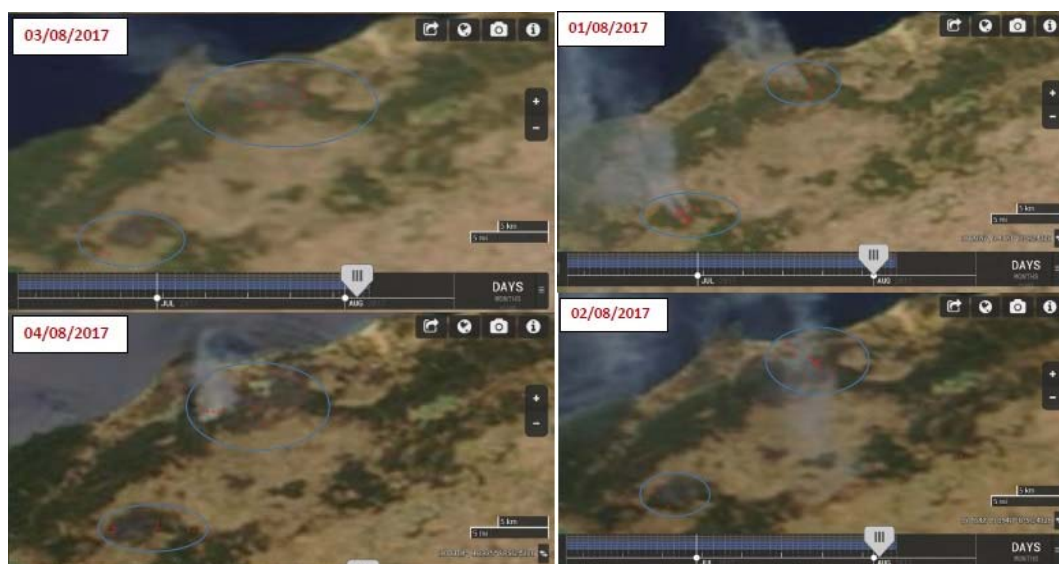


### Summary of the current response

Tunisian Red Crescent (TRC) is mobilizing 10 staff and 120 volunteers who have started to provide assistance and services to the affected communities, distributing NFIs and food for 400 people in Jendouba and 600 in Bizerte. 120 volunteers have also started to conduct assessment on the situation. With the approval of the DREF operation, TRC intends to undertake a detailed situation and needs assessment while providing emergency assistance to the families left without shelter. The emergency assistance will include food and basic household items for displaced families, first aid services where necessary and psychosocial support in the affected communities. The hot and dry season particularly heightens the risk for outbreaks of fires. TRC will support high risk communities by raising awareness about the risk of fires, how to minimize the risks and what to do in case of fire.

TRC is working in close partnership with local and national authorities, as well as other relevant partners. Cooperation with local authorities, technicians and disaster experts from National Guards and Civil protection is also taking place.

TRC volunteer assessing the situation  
Sejnane – Bizerte (Photo: TRC)



*Evolution of fire zones in the region of Bizerte from 01 to 04 August 2017*

### Needs analysis, targeting, scenario planning and risk assessment

Initial assessment was conducted by staff and volunteers from TRC in two governorates (Jendouba and Bizerte). The assessments show that 250 households (1,000 people, around 400 in Jendouba and 600 in Bizerte) have been affected, including vulnerable groups such as people with disabilities, single parent families, families with many children and older people living alone. The immediate needs among the affected communities are: food, shelter, essential household items, water distribution and provision of psychosocial support to the affected families. Health and hygiene materials are also required for affected communities. Trained TRC volunteers are supporting the national authorities and emergency services in providing First Aid to those injured.



*TRC visiting and assisting affected families (Photo: TRC)*

TRC branches, supported by the national committee at the headquarters, are closely monitoring the evolving situation and assessment teams are also visiting the affected areas. TRC teams will continue to identify the evolving needs through these assessments but the main needs identified during the assessment were:

### **Water, sanitation and hygiene promotion**

Affected families who have lost their houses and their possessions, living in temporary accommodation or transitional shelters, are in need of hygiene materials and clean water. Bottled water has been donated by local companies to TRC and TRC is transporting this water to the families in temporary and transitional shelters.

### **Shelter and NFIs**

Affected families who have lost their houses and their possessions, living in temporary accommodation or shelters, are in need of basic household items such as camp beds, mattress and blankets to better equip temporary accommodation and transitional shelters.

### **Food security**

The fire has caused large-scale destruction of crops and livestock. The extent of the damage is still being assessed. In some cases, agricultural assets such as tools have been lost. Families whose houses were destroyed have lost all their food stocks. These families will experience food shortages between now and October 2017. This DREF includes distribution of basket food for 2 months for 250 families.

### **Psychosocial support**

The affected families are in need of counselling support. TRC, through their trained volunteers will support in reducing the levels of stress among the affected communities by providing PSS sessions to those affected by and at risk from the ongoing wildfires.

### **Beneficiary selection**

The TRC will be working with 250 families (1,000 persons) who have lost all their possession due to the forest fires in the governorates of Jendouba and Bizerte. TRC is prioritizing the most vulnerable families, particularly those who have been displaced to temporary shelters, and selection of beneficiaries is being done jointly with local authorities.

## **B. Operational strategy<sup>1</sup>**

### **Overall objective**

The present operation will mainly focus on relief assistance, and raising awareness of the risks of further fire.

### **Proposed strategy**

TRC intends to perform a detailed situation and needs assessment which will inform possible needs for further action while at the same time ensure that the displaced families have temporary shelter protecting them from the weather conditions and decrease their vulnerability by providing basic household items.

Through this DREF TRC will continue with response activities providing 250 affected vulnerable families with their initial needs. TRC has received bottled water as donation from local business and is using the NS truck to transport this water to the affected families. In addition to water, TRC will provide the 250 families with a 2-month food parcel as the displaced families have lost their food reserves through the fire. TRC is providing blankets, mattresses and camp beds to the 250 families staying with host families as the host families do not have the capacity to the extra equipment for the families they are sheltering. The provision of camp beds is seen as most appropriate as many families have indicated their desire to return to their homes (irrespective of the considerable fire damage) as soon as possible to start rebuilding. The camp beds are sufficiently portable and will also enable families to establish themselves while repairing their houses.

The 250 families covered by the DREF will receive the following assistance:

- 1 food parcel per family

<sup>1</sup> The plan should be prepared by the National Society, with support from the Secretariat technical departments and support services.

- 1 hygiene kit per family
- 4 blankets per family
- 4 mattresses per family
- 4 camp beds

The contents of the food parcel and hygiene kit is listed below:

### FOOD PARCEL CONTENTS

Description	Quantity	Unit
Pate (500gr)	10	Pack
Couscous (1kg)	5	Pack
Riz (1kg)	5	Pack
Semoule (1kg)	5	Pack
Farine (1kg)	5	Pack
Sel (1Kg)	1	Pack
Sucre blanc (1kg)	5	Pack
Concentré de tomate	10	Can
Thon (1kg)	1	Can
Vegital oil (5L)	2	Bottle
Confiture (05kg)	4	Can
Thé (100g)	4	Pack
Café (250g)	4	Pack
Carton	1	Pcs

### HYGIENE KIT CONTENTS

Description	Quantity	Unit
Bathing soap (250g)	4	Pack
Toothbrush	4	Pcs
Toothpaste	4	Pcs
Landry soap (1.6kg)	1	Pack
Napkins (*10)	8	Pack
Shaving cream (100g)	1	Pack
Shaver (*4)	2	Pack
Carton	1	Pcs

TRC is also mobilizing 120 volunteers to support the operation. The volunteers are primarily from the region affected by the fire but the branches have requested extra support from the capital Tunis. Volunteers are being transported to the affected area where they will work in 48hr rotations after which they will return home to rest. Volunteers are assisting in assessment, relief distribution and loading and unloading. In addition, TRC has 30 volunteers who have received PSS training through the IFRC. These volunteers will be used to provide psychosocial support to the families who have been affected by the wildfires. The mobilized volunteers will need protective equipment such as gloves, headlamps and work boots to carry out their tasks safely.

The operation will also include awareness raising action for communities at risk of further fires. TRC will prepare flyers and posters highlighting the risk of fires and providing information on what to do if surrounded by fire, how to evacuate safely and where to go, how to prevent accidents, what to do in case of smoke inhalation, general fire prevention and safety and who to contact if affected by the fires. Awareness material will be prepared and distributed to the people in the areas most at risk through the TRC volunteer teams.

Based on the full scale of needs identified through the initial assessment, and depending on the scope of the government operation and the possible spread of the wildfires, this DREF may be revised at a later stage.

## Operational support services

### Human resources

To date, TRC have mobilized 10 staff and 120 volunteers and have been involved in the following activities:

- Dispatch of a team of volunteers who carried out a rapid assessment and is now planning for a more detailed assessment alongside government and partners
- Operation coordination at the national and local level
- Psychosocial support to the affected families and establishment of contacts with resource people in the areas for this purpose
- A detailed assessment starting by 1st August 2017
- Distribution of prepositioned stock for the initial response

For the implementation of this DREF, TRC is mobilizing 120 volunteers over the period of 3 months (40 volunteers per month).

### Logistics and supply chain

TRC is mobilizing 1 truck and 5 cars (including 1 ambulance) from HQ to branches to support the NFI and food distributions as well as mobilizing the volunteer teams. Further capacity for NFI and food distributions will be achieved through rented transport. Qualified staff will also provide technical support to NDRT and dispatch of goods stored in the TRC main warehouse belonging to the local storages, as well as ensure rental of transport services when needed.

All procurements for the DREF will be done locally from HQ level in Tunisia following the IFRC procurement procedures.

### Communications

Maintaining a steady flow of accurate information between the field and other major stakeholders is vital for fundraising, advocacy and maintaining the profile of the emergency operation. During an operation, communications between affected populations and the Tunisian Red Crescent, as well as with donors, is an essential mechanism for effective disaster response and fundamental to promoting greater quality, accountability, and transparency.

### Security

TRC cooperates closely with local and national authorities (including Garde national and military) to ensure it has the latest security information and communicates closely with the operation room of the ministry of interior in security matters.

TRC will ensure security plans and procedures are kept up to date and that those travelling to the field are properly equipped and supported and are well informed on security protocols.

### Planning, monitoring, evaluation, & reporting (PMER)

Beneficiaries and their leaders will be regularly consulted in all aspects of the operation (beneficiary selection, registration at the site as well feed back into the systems on the operations). A beneficiary satisfaction survey will be carried out at the end of the operation to measure the impact and the appropriateness of the intervention. A lessons-learned workshop for 20 stakeholders (including staff, volunteers, IFRC and local partners) will also be organized at the end of the operation.

IFRC MENA regional office will provide necessary support to ensure a robust M&E plan is developed and implemented for the operation at national and regional levels.

### Administration and Finance

The Tunisian Red Crescent will be responsible for managing the funds in accordance with standards practices for IFRC on operational transfers, based on the requirements and justifications specified in the letter of agreement to be signed between the National Society and IFRC for the implementation of the project.

The IFRC through the cluster representation and finance department in MENA Regional office will provide necessary operational support for review, validation of budgets, bank transfers, and technical assistance to the National Society on procedures for justification of expenditures, including the review and validation of invoices.

TRCS – which is on working advance system – has been supported for many years by the IFRC and is accustomed to these financial procedures.

## C. Detailed Operational Plan

### Early warning & emergency response preparedness

<b>Outcome 1: Communities' resilience to disasters is protected and restored especially with regards to wildfire</b>													
<b>Output 1.1 Community-based early warning systems (EWS) to monitor disaster and climate risk are established or strengthened</b>													
Activities planned	Week / Month	1	2	3	4	5	6	7	8	9	10	11	12
Produce and disseminate of awareness materials			x	x									
Coordination with local emergency departments and local authorities			x	x	x	x	x	x	x				
Conduct awareness raising sessions with affected community		x	x	x	x	x	x	x	x				
Organization of lessons learned workshop at the end of the operation													x

### Water, sanitation and hygiene promotion

<b>Outcome 1: The risk of waterborne and water related diseases is reduced through the provision of hygiene kits</b>													
<b>Output 1.1: 250 affected families living in transitional shelters will receive hygiene kits</b>													
Activities planned	Week / Month	1	2	3	4	5	6	7	8	9	10	11	12
Identify beneficiaries and develop a distribution plan		x											
Procure or replenish and distribute hygiene kits			x	x	x								
Monitor the relief activities and provide reporting on distributions		x	x	x	x	x	x	x	x	x	x	x	x

### Shelter and settlements (and household items)

<b>Outcome 1: The immediate needs of 250 families affected by the wildfires are met through the distribution of relief items</b>													
<b>Output 1.1: 250 in transitional shelters families receive mattresses, blankets and camp beds</b>													
Activities planned	Week / Month	1	2	3	4	5	6	7	8	9	10	11	12
Identify beneficiaries and develop a distribution plan		x											
Procure or replenish items		x	x	x									
Distribution of items			x	x	x	x	x	x	x				



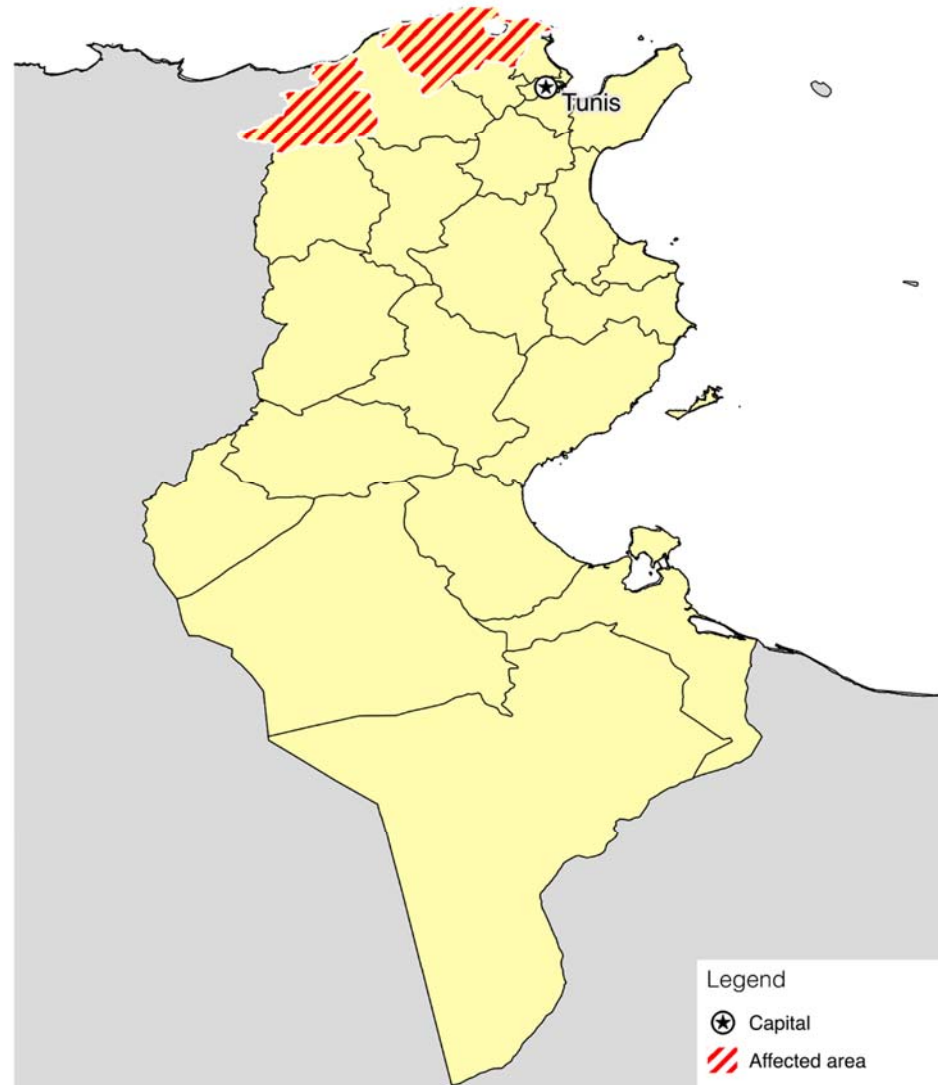




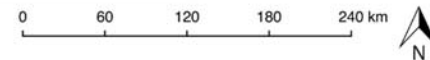


## TUNISIA: FOREST FIRES

11 August 2017 • MDRxx123



The maps used do not imply the expression of any opinion on the part of the International Federation of the Red Cross and Red Crescent Societies or National Societies concerning the legal status of a territory or of its authorities.  
Map data sources: GADM, International Federation



# DREF OPERATION

10/8/2017

## APPEAL OPERATION NAME AND CODE

<b>Budget Group</b>	<b>DREF Grant Budget CHF</b>
Shelter - Relief	15,960
Shelter - Transitional	0
Construction - Housing	0
Construction - Facilities	0
Construction - Materials	0
Clothing & Textiles	23,940
Food	15,920
Seeds & Plants	0
Water, Sanitation & Hygiene	6,384
Medical & First Aid	0
Teaching Materials	5,985
Ustensils & Tools	0
Other Supplies & Services	0
Emergency Response Units	4,788
Cash Disbursements	0
<b>Total RELIEF ITEMS, CONSTRUCTION AND SUPPLIES</b>	<b>72,977</b>
Land & Buildings	0
Vehicles Purchase	0
Computer & Telecom Equipment	838
Office/Household Furniture & Equipment	0
Medical Equipment	0
Other Machiney & Equipment	0
<b>Total LAND, VEHICLES AND EQUIPMENT</b>	<b>838</b>
Storage, Warehousing	2,693
Dsitribution & Monitoring	0
Transport & Vehicle Costs	7,132
Logistics Services	0
<b>Total LOGISTICS, TRANSPORT AND STORAGE</b>	<b>9,825</b>
International Staff	0
National Staff	0
National Society Staff	0
Volunteers	9,756
<b>Total PERSONNEL</b>	<b>9,756</b>
Consultants	0
Professional Fees	0
<b>Total CONSULTANTS &amp; PROFESSIONAL FEES</b>	<b>0</b>
Workshops & Training	2,095
<b>Total WORKSHOP &amp; TRAINING</b>	<b>2,095</b>
Travel	4,500
Information & Public Relations	0
Office Costs	0
Communications	0
Financial Charges	0
Other General Expenses	0
Shared Support Services	0
<b>Total GENERAL EXPENDITURES</b>	<b>4,500</b>
Programme and Supplementary Services Recovery	6,499

<b>Total INDIRECT COSTS</b>	<b>6,499</b>
<b>TOTAL BUDGET</b>	<b>106,491</b>