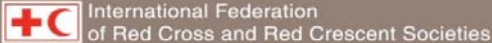


# Emergency Plan of Action (EPoA)

## Egypt: Flash Floods



<b>DREF Operation n°</b>	<b>MDREG015</b>	<b>Glide n°:</b>	<b><a href="#">FL-2020-00038 EGY</a></b>
<b>Date of issue:</b>	<b>25 March 2020</b>	<b>Expected timeframe:</b>	<b>3 months</b>
		<b>Expected end date:</b>	<b>30 June 2020</b>
<b>DREF allocated: CHF 488,004</b>			
<b>Total number of people affected:</b>	20,000 people (4,000 families)	<b>Number of people to be assisted:</b>	12,348 people
<b>Provinces affected:</b>	All of the Governorates in the country have been affected; the following are the most affected Gov: Cairo, Giza, Monufia, Sharkeia, South Sinai, Red Sea, Beni Suef, Faiyum and Ismailia	<b>Provinces/Regions targeted:</b>	Cairo, Giza, Beni Suef, Ismailia and Faiyum
<b>Host National Society:</b> Egyptian Red Crescent Headquarter - 27 branches in 27 Governorates and more than 30,000 volunteers nationwide			
<b>Red Cross Red Crescent Movement partners actively involved in the operation:</b> International Federation of Red Cross and Red Crescent Societies (IFRC)			
<b>Other partner organizations actively involved in the operation:</b> Egyptian local authorities and local NGOs			

## A. Situation analysis

### Description of the disaster

On March 11, 2020, the Egyptian Meteorological Authority - stated that the situation during the period 12 – 14 March 2020 will witness heavy rains with potential floods. The government has appealed the citizens not to leave their homes and closed several major roads between the provinces, disrupting government, public and private sectors.

On 11 March 2020, the Egyptian Red Crescent issued an emergency alert and activated its Central Emergency Operations Center (EOC) as well as the Emergency Operations Rooms at the Branches.

The continued severe weather, including heavy rain, strong winds and thunderstorms caused widespread flooding across Egypt, killing at least 40 people. According to Ministry of Social Solidarity (MoSS), 10 people died and more than 400 injured in Cairo, 3 people died and 5 were injured in Qena Governorate (central Egypt). The remaining fatalities occurred in Giza, Ismailia, Sharkeia, New Valley, Menofia, and South Sinai Governorates, 12 people missing. The train service was suspended nationwide, as heavy rain caused a train collision in northern Giza, injuring 13 people.

The official figures reported by the MoSS on the number of people affected by the floods in the country estimates 20,000 people (4,000 families). ERC conducted a rapid assessment at the most affected locations in the Governorates: Cairo, Giza, Beni Suef, Ismailia and Faiyum. As the rest of the affected people are located in various areas within the governorates, MoSS and some local NGOs have conducted the needs assessment in those affected areas.

Several key highways and some public infrastructure, including seaports and international airports were closed. Schools and government offices remained closed on 13-14 March 2020.



Figure 1: Egyptian Red Crescent (ERC) volunteers carrying out assessment in the affected communities

Source: ERC, 13 March 2020



Figure 2: ERC volunteers providing blankets and relief items to the people affected by flash floods.

Source: ERC, 13 March 2020



Figure 3: ERC volunteers providing First Aid to the people affected by train collision

Source: ERC, 12 March 2020

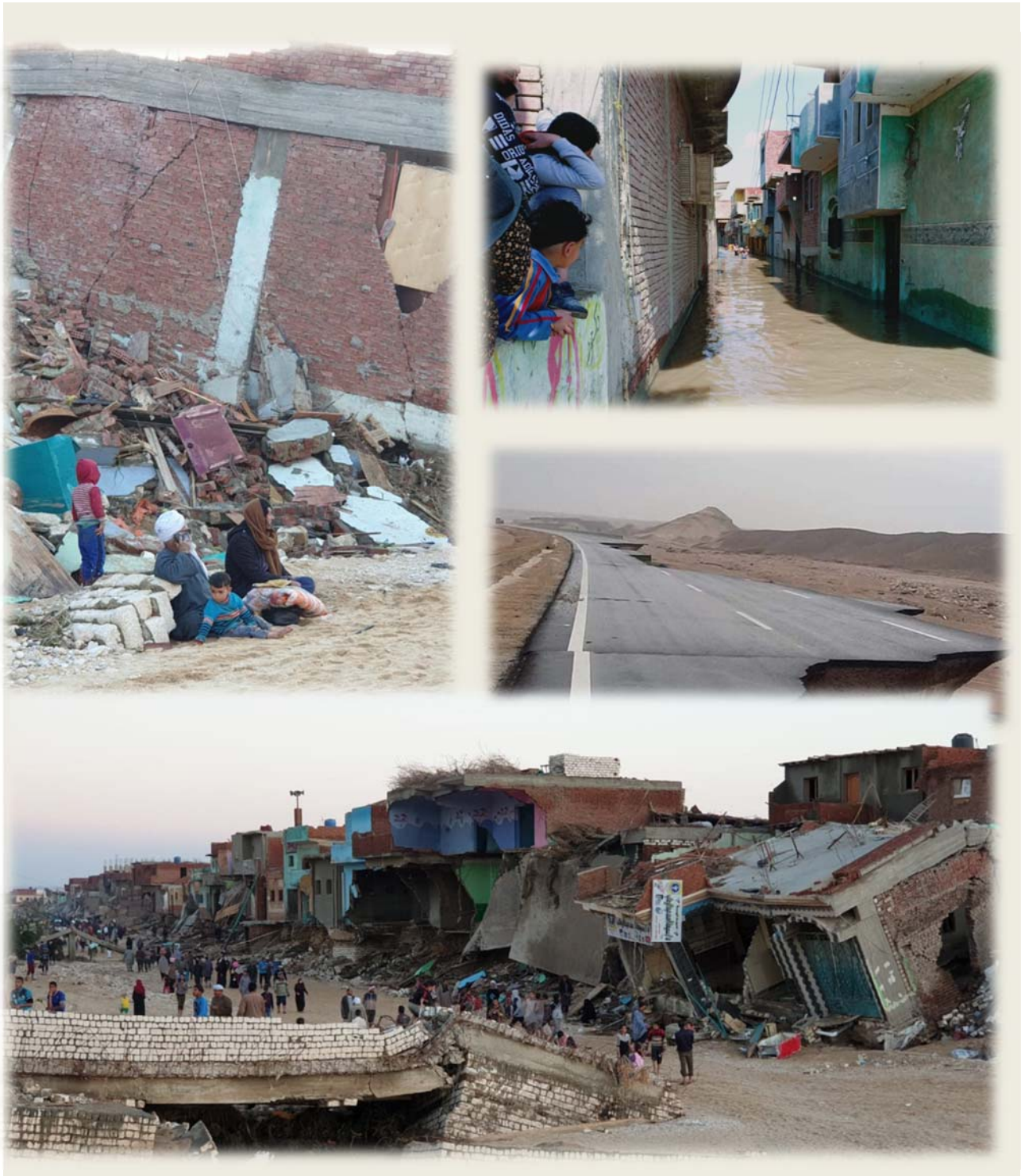


Figure 4.: Areas affected by flash floods.  
Source: ERC, 14 March 2020

## Summary of the current response

The Egyptian Red Crescent Society (ERC) is headquartered in Nasr City- Cairo and has 27 Branches and more than 30,000 volunteers nationwide. The ERC has volunteers Emergency Response Teams (ERT) who are trained on First Aid, Disasters, Psychological First Aid (PFA), logistics, water and sanitation and needs assessments.

After the government's declaration of the emergency alert, the ERC activated its Emergency Operations Center (EOC). The EOC has remained functional since. Additionally, 100 ERTs in 27 branches were activated with an average of 500 volunteers mobilized since.

The ERC has supported the evacuation of 684 people into the assembly points. Currently there are 2,926 people hosted in 19 evacuation centres in Cairo, Giza, Beni Suef, and Faiyum. In addition, 38 people on the move were evacuated to the centre in "6<sup>th</sup> of October" school. Also 2,264 people were assisted by ERC with First Aid, blankets, and mattresses while 480 families were provided with hot meals distributions.

Response Activities	People Reached
Evacuation	684 people
First Aid	Around 2,000 people nationwide
Relief Items (Blankets, Mattresses)	2,264 people
Hot meals	480 families (in Cairo )

In addition to leading a detailed needs assessment at the affected areas, a committee of 10 ERC senior staff is following up on the overall operation at the Emergency Operations Room at the HQs. 250 volunteers were deployed to provide the following services: First Aid for injured, Psychological First Aid, transportation of the affected to the identified assembly points, distribution of food and noon food items and providing health services at the evacuation centres.

[First report](#) of the situation was issued and posted on [IFRC GO platform](#).

Future progress reports will be shared with the IFRC North Africa cluster office and the IFRC DCPRR at the MENA Regional Office.

The ERC has a solid experience in responding to similar emergencies (2018 Alexandria flood and 2016 Red Sea flood).

The ERC, in its auxiliary role to the public authorities, has collaborated with the civil society, ambulance authority and Ministry of Social and Solidarity (MoSS) in the response of the situation.

On 15 March 2020, the ERC was invited to the national coordination meeting led by the MoSS, in order to share information about their interventions and to coordinate with all the local NGOs on the next phase. This helped ERC in designing the EPOA for the affected areas. Each organization involved in the floods response will provide support based on the existing needs in each affected area.

The following interventions were identified by the NGOs based on the results shared by MoSS :

Governorate	Total Number of Affected Families	NGOs Response		ERC Response	
		Total Number of Families Supported by NGOs	Type of Intervention <sup>1</sup>	Total Number of Families Supported by ERC	Type of Intervention
Cairo	480	180	Reconstruction, Shelter	480 with Basic Needs 300 with the other services	Shelter, Health and Wash
Giza	1,300	900	Reconstruction, Shelter, Livelihood	100 with Basic Needs 400 with other services	Shelter, Health and Wash
Qalyubia	35	35	Shelter	0	
Alexandria	2	2	Shelter	0	
Matruh	6	6	Shelter	0	
Gharbia	35	35	Shelter	0	

<sup>1</sup> all the families will be supported with hot meals, clothes and house furniture

Monufia	149	149	Reconstruction	0	
Damietta	3	3	Shelter	0	
Dakahlia	10	10	Shelter	0	
Sharqia	325	325	Reconstruction	0	
Ismailia	277	177	Reconstruction, Shelter, Livelihood	100	Shelter, Basic Needs, Health and Wash
Suez	2	2	Shelter	0	
South Sinai	700	700	Reconstruction	0	
Red Sea	85	85	Shelter	0	
New Valley	17	17	Shelter	0	
Faiyum	216	116	Reconstruction, Shelter, Livelihood	100	Shelter, Basic Needs, Health and Wash
Beni Suef	315	215	Reconstruction, Shelter, Livelihood	100	Shelter, Basic Needs, Health and Wash
Minya	16	16	Shelter	0	
Asyut	3	3	Shelter	0	
Sohag	5	5	Shelter	0	
Qena	18	18	Shelter	0	
Aswan	1	1	Shelter	0	
<b>Total</b>	<b>4,000</b>	<b>3,000</b>		<b>1,000</b>	

## Needs analysis, targeting, scenario planning and risk assessment

### Needs analysis

Since beginning of operation, ERC assessment teams composed of 10 teams (50 volunteers) and mobilized to the affected areas, conducted assessments.

Families have been evacuated from their homes into evacuation centres located nearby, guest centres, churches and mosques. In addition ERC distributed relief items to more than 2,264 people. There is still a need to distribute households supplies and basic needs for more than 900 families.

**SHELTER:** Since the onset of the disaster, the ERC response teams have been responding to the affected population through assessing and identifying the needs, and providing different services including distribution of Non-Food items such as blankets and mattresses. Houses of 480 families from Alzaraib, Cairo, 1,300 families from El Desamey, Giza, and 277 families from Ismailia have been declared as non-habitable by the Civil Protection. Currently, these families have been hosted in evacuation centres. These families are waiting for their homes to be rehabilitated and are not able to return home due to risk of collapse as their houses falls in the stream of floods. In addition to that, 38 from the people on the move who were evacuated to a school (evacuation centre) in the "6<sup>th</sup> of Oct." city.

**LIVELIHOODS AND BASIC NEEDS:** Initially, ERC responded to 480 displaced families by providing hotmeals to the members. Displaced people in Cairo and Giza are being hosted in churches and mosques where they're struggling to get food and other basic needs. Additionally, the floods have damaged a significant number of livestock across the affected areas with unknown number of the affected owners.

**HEALTH:** According to the information provided by the assessment teams, there is a high demand for basic health care to respond to the diseases that have been identified and exacerbated by the floods. Health needs have been identified to respond to the reports of acute respiratory diseases. Vectors have proliferated due to accumulation of water and animals killed by the flood.

Additional risks include the impact of Novel coronavirus disease 2019 (COVID-2019) pandemic on the country placing additional strain on the health care sector. ERC will follow mitigation actions reducing risks related to the spread among the people in the evacuation centres and at the hosted communities, as this could precipitate the spread of the disease.

A need for Mental Health and Psychosocial Support for children and adult was identified, especially for those families hosted in churches and mosques and those who are unable to return to their homes since these have been declared uninhabitable and as well those who have missing persons.

**WATER AND SANITATION:** There is a need to provide safe drinking water and launch preventive health actions to the populations upon return to their homes to avoid outbreaks due to the conditions following the floods. Proper hygiene conditions in the evacuation centres need to be improved. There is a need to provide hygiene supplies to families who have lost their household items and do not have access to funds.

### Targeting

This operation will target the following population based on the results of the coordination meeting with MoSS and Local NGOs:

- 850 families affected by flooding in Cairo, Giza, Beni Suef, Ismailia and Faiyum
- In addition to 150 families evacuated due to the risk of housing collapse.

The following provides details on the number of people to be reached per sector, taking in consideration that not all families will receive the same support from Shelter and Basic Needs:

**SHELTER:** 1,453 families are targeted. These families have been evacuated into the nearby churches and mosques. A total number of 5,000 people (1,000 families) are in need of relief items such as blankets and mattresses.

**LIVELIHOODS & BASIC NEEDS:** Following to the coordination meetings with the local authorities and local NGOs, it has been agreed that ERC will cover most vulnerable families (880) who lost most of their belongings, foodstock, and livestock from Cairo, Giza, Beni Suef, Ismailia and Faiyum are in need of basic needs. Those will receive cash assistance based on selection criteria.

**HEALTH:** Since the onset of the event, ERC response teams have been responding to the injured people by providing pre-hospital care and emergency first-aid (around 2,000 nationwide). 1,000 families are targeted under the health component. They are in need of essential health care services that include: raising health outreach, pre-hospital care and referrals, COVID 2019 prevention measures, and Mental Health and Psychosocial Support.

**WATER & SANITATION:** 1,000 families. This target comes from the number of families located at the evacuation centres, churches and mosques and in Dewika that will be targeted by hygiene promotion activities including family hygiene kits distributions. Items included are presented in the table below. ERC will also establish 25 units including one tank and 6 pipelines with taps to provide safe drinking water to the affected populations. ERC is coordinating with local NGOs to provide the transportation of the drinking water through trucks.

**LOGISTICS & SUPPLY CHAIN:** ERC headquarters will facilitate the logistics and procurement from the local markets under this DREF operation to ensure the required supplies are available for the implementation. The supplies will be purchased through the headquarters, and then distributed to targeted branches to the affected communities for assistance. IFRC will provide guidance to ERC to ensure compliance with IFRC procurement and administrative processes.

The below table shows the content of shelter items:

Item	Quantity	Notes
<a href="#">Blankets</a>	5,000	for distribution
<a href="#">Mattresses</a>	5,000	for distribution
<a href="#">Kitchen set type A</a>	1,000	for distribution

The below table shows the content of the hygiene kits:

Item	Quantity
Sterile wipes 20 tissues	5,000
Tissue	5,000
Toothbrush medium size	5,000
Toothpaste 50ml	5,000
Alcohol 70% 150ml	5,000

Towel medium size	5,000
Soap 85 gm	5,000

The below table show the contents of the Medical sets:

Item	Quantity	Notes
<a href="#">First Aid Set</a> each set for 20 people	100	For replenishment
PPE	500	

**Communication and Visibility:** To support volunteers in their mission, as well as the visibility of RCRC actions on the ground, ERC provided its volunteers with protection and visibility materials. ERC will use its own megaphones to organize the work in the communities during the operation. Some IEC materials will be printed to promote hygiene and health awareness.

**Planning, monitoring, evaluation, & reporting (PMER):** ERC will oversee all operational, implementation, monitoring and evaluation, and reporting aspects of the present operation in the affected areas through its country-wide network of branches and volunteers along with HQ PMER unit. IFRC, through its regional office, will provide technical support in programme management to ensure the operation objectives are met. Reporting on the operation will be carried out in accordance with the IFRC DREF reporting standards. Regular updates will be issued during the operation's reporting timeframe and a final report will be issued within three months from the end of the operation. A lesson learned workshop will be organized at the end of the operation and a report will be subsequently published.

**Community Engagement and Accountability (CEA):** CEA will be mainstreamed throughout the intervention to guarantee maximum and meaningful participation of the affected communities. A feedback and complaint desk will be put in ERC centres for recipients of different ERC services to provide direct feedback. For the purpose of clarity and for a good flow of information, clear roles and responsibilities will be agreed with representatives, community leaders and committees and information will be shared widely about selection criteria, distribution processes and response activities with the whole community. The selection process of people to be reached will be clearly communicated to all affected.

**Protection, Gender and Inclusion (PGI):** Acknowledging that women, girls, men and boys with diverse ages, disabilities and backgrounds have very different needs, risk and coping strategies, the operation will pay particular attention to protection and inclusion of vulnerable groups.

**Exit Strategy:** Local NGOs involved from the onset of the operation will participate in the lessons learned workshop to be conducted at the end of the operation. Lessons Learned outcomes and recommendations will be considered to establish further improved response mechanism of ERC in future such emergencies support to MoSS. This operation will provide opportunity to ERC enhance their capacity to respond systematically in coordination, assessment, mitigation and effectively respond. Community leaders and trained volunteers in targeted specific communities covered for this operation will be part of the lessons learned workshop and capture best practices on their active on good practices of emergency response interventions which might contribute to the Disaster Risk Reduction of the affected areas in the future.

**This DREF operation has already reached 7,348 affected people and will continue to support 5,000 additional people (1,000 families), avoiding double counting, for a period of 3 months. The emergency planning includes the imminent needs while ERC will keep monitoring the situation closely, focusing on the health risks, and will revise accordingly if needed taking into consideration the evolving COVID-19 situation and the operational risks that might develop. The affected families will receive different humanitarian assistance based on their needs; however, all of the targeted households will receive hygiene kits and promotion including messages related to COVID-19 prevention due to the lack of health facilities in the communities.**

### Scenario planning

The most recent weather forecast indicates that there will be a gradual decrease in the amount of rain.

### Operation Risk Assessment

Among the risks that have been presented in the operation are landslides and collapse of slopes, as well as blockage of roads.

Another risk factor to consider is the impact of Novel coronavirus disease 2019 (COVID-2019) pandemic on the country. ERC has included in their response operations mitigation measures for the staff, volunteers, and people reached in order to reduce the risk of infection.

The ERC Emergency Response Teams will constantly monitor the situation and maintain communication with the local authorities and government agencies to assess the context and the situation of the affected population, putting preparedness and protective measures for their intervention considering all risks including COVID-19.

## B. Operational strategy

Based on the results of the assessment conducted by the ERT, the main priority in the targeted population are families who were displaced to evacuation centres and the families who are temporary hosted by their neighbours and relatives.

### **Overall Operational objective:**

The objective of this operation is to provide basic emergency shelter assistance, basic needs, primary healthcare services, psychosocial support, hygiene promotion to 1,000 vulnerable families (5,000 people) affected by the flash floods in 5 areas.

An Operations Coordinator will be hired for a period of 3 months to manage the DREF operation.

The total number of volunteers mobilised for this DREF operation is 500 volunteers, responding since the start of the floods and will continue to implement the DREF activities in the targeted areas. Part of ERC volunteer network includes health volunteers (doctors, nurses and paramedics) formed by ERT volunteers, MHPSS volunteers and Health Promotion volunteers.

The ERC will proceed with the procurement of all items and financial services aligned with the IFRC procurement regulations and standards. In addition to ensure the process of distributions and assessments and transport to targeted communities.

Reporting on the operation will be conducted in accordance with the IFRC's reporting standards. A final report will be issued within three months of the operation's completion.







## Livelihoods and basic needs

People targeted: 4,400 people (880 families)

Male:2,240

Female:2,160

Requirements (CHF): 229,742

**Needs analysis:** Food and coverage of short-term needs are the priority for the people in churches and mosques. ERC had distributed hot meals to 300 families and as well some of the support from other humanitarian organizations during the first days of the response. The targeted affected 880 families will not be necessarily reached with shelter items; a family's inclusion of needs have been identified based on the multi-sectorial assessment. These families who lost their belongings/livestock due to the floods, require cash to obtain supplies for their basic needs. The needs assessments indicate that the consulted affected population need food, clothes and medication.

**Population to be assisted:** the targeted families will receive multipurpose cash disbursement worth value of 244 USD for a two-month period. The calculation of 122 USD per month is based on the minimum expenditure basket<sup>2</sup> developed considering the most immediate needs of the affected population. The cash will be distributed for one time based as direct distributions, considering the following selection criteria:

- Families directly affected by the flooding.
- Families whose livelihoods have been affected.
- Economic status of the household.
- Families identified by the sectorial assessment.

ERC had more than 5 years' experience in assisting the most vulnerable people (Palestinian) with Cash assistance that was in coordination with ICRC and German Red Cross.

**Programme standards/benchmarks:** ERC will ensure alignment with local authority data base; SPHERE standards will be considered for the provision of assistance.

P&B Output Code	Livelihoods and basic needs Outcome 1: Communities, especially in disaster and crisis affected areas, restore and strengthen their livelihoods	# of targeted households that have enough to meet their survival threshold. (Target: 880 families)															
	Livelihoods and basic needs Output 1.5: Households are provided with unconditional/multipurpose cash grants to address their basic needs	# of households reached with cash for basic needs. (Target: 880 families)															
	Activities planned Weeks	1	2	3	4	5	6	7	8	9	10	11	12	13	14	15	16
AP008	Feasibility analysis including market and FSPs assessments for cash and voucher assistance (CVA).																
AP008	Beneficiary selection and registration																
AP008	Development and implementation of community engagement and accountability (CEA) strategy for voucher distribution																

<sup>2</sup> The minimum expenditure basket for a family of five members contains food expenditure of 90 USD, transport 20 USD and contingency fund 12 USD

AP081	Unconditional/multipurpose cash distributions.																
AP008	Post-distribution monitoring including market monitoring and satisfaction survey																



## Health

People targeted: 7,000 people  
Requirements (CHF): 15,972

**Needs analysis:** The floods have affected community infrastructure and caused loss of household goods and assets. Skin diseases, diarrhoea and respiratory diseases have been reported. CBHFA will provide health promotion activities to respond to health concerns related to the floods and to prevent post emergency diseases.

As ERC will have the lead in the overall management of the shelters, COVID-19 mitigation measures will be implemented including safe social distancing, hygiene messaging and promotion, and continuous monitoring for any suspected cases. Should additional support be required from IFRC, this will be channelled through the global emergency appeal for COVID-19 outbreak.

**Population to be assisted:** Affected people by the onset of the flash floods were reached through emergency first-aid, psychosocial support, and pre-hospital care. This operation will keep monitoring through CBHFA teams 1,000 families located in shelter points for any health issues or concerns and will revise the DREF plan accordingly if needed.

**Programme standards/benchmarks:** The activities will meet the Egyptian MoHP, Sphere and WHO standards.

P&B Output Code	<b>Health Outcome 1: The immediate risks to the health of affected populations are reduced</b>	# of people in the targeted areas reached with medical actions. <b>(Target: 7,000)</b>															
	<b>Health Output 1.1: The health situation and immediate risks are assessed using agreed guidelines</b>	# of people reached with medical care sessions to reduce relevant health risks. <b>(Target: 7,000)</b>															
	Activities planned Weeks	1	2	3	4	5	6	7	8	9	10	11	12	13	14	15	16
AP022	Emergency health care and first aid activities for 3 communities																
AP022	Mobilization of ERC health volunteers																
P&B Output	<b>Health Outcome 4: Transmission of diseases of epidemic potential is reduced</b>	# of people reached by NS with services to reduce relevant health risk factors. <b>(Target 7,000)</b>															

Code	Health Output 4.1: Community-based disease control and health promotion is provided to the target population	# of people directly reached with community-based disease control and health promotion programming in the communities: (Target 7,000)															
	Activities planned Weeks	1	2	3	4	5	6	7	8	9	10	11	12	13	14	15	16
AP021	Reproduce and distribute IEC materials on community-based disease prevention, epidemic preparedness and health promotion																
AP021	Health and hygiene promotion campaigns on prevention and control of common communicable diseases such as COVID 2019 , Malaria, Acute Watery Diarrhoea, Bloody Diarrhoeas, Dermatitis and other outbreaks likely to occur during emergency situations																
P&B Output Code	Health Output 6.1: Psychosocial support provided to the target population as well as to RCRC volunteers and staff	# people provided with direct psychosocial support. (Target 7,000)															
	Activities planned Weeks	1	2	3	4	5	6	7	8	9	10	11	12	13	14	15	16
AP023	Provide PSS to people affected by the crisis/disaster																



## Water, sanitation and hygiene

People targeted: 5,000 people  
Requirements (CHF): 51,919

**Needs analysis:** Evacuated families require access to safe water and basic hygiene supplies to guarantee their well-being and to avoid the increase of potential diseases linked to the lack of proper hygiene conditions.

**Population to be assisted:** 1,000 families who are in the evacuation centres have not received hygiene supplies and don't have access to safe water. ERC through its WASH unit and volunteers will procure and distribute 5,000 individual hygiene kits. ERC will promote hygiene messaging for the affected communities and the volunteers, considering the ongoing COVID-19 outbreak as part of their personal protection as well.

ERC will also establish 25 units including one tank and 6 pipelines with taps to provide safe drinking water to the affected population (1,000 families). ERC is coordinating with local NGOs to provide the transportation of the drinking water through trucks.







## Funding Requirements

International Federation of Red Cross and Red Crescent Societies

all amounts in Swiss Francs (CHF)

### DREF OPERATION

MDREG015 - Egypt – FLASH FLOODS

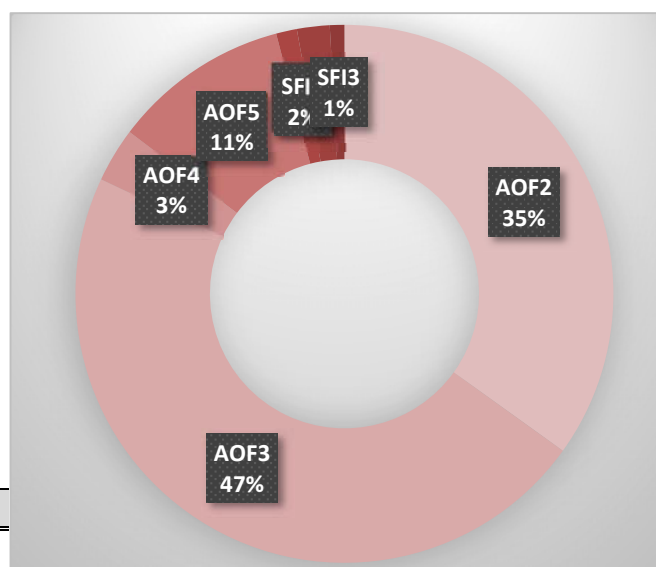
03/25/2020

#### Budget by Resource

Budget Group	Budget
Shelter - Relief	160,000
Water, Sanitation & Hygiene	41,250
Medical & First Aid	15,000
Teaching Materials	2,100
Cash Disbursement	214,720
<b>Relief items, Construction, Supplies</b>	<b>433,070</b>
Distribution & Monitoring	1,000
Transport & Vehicles Costs	9,000
<b>Logistics, Transport &amp; Storage</b>	<b>10,000</b>
National Society Staff	1,500
Volunteers	11,150
<b>Personnel</b>	<b>12,650</b>
Workshops & Training	2,500
<b>Workshops &amp; Training</b>	<b>2,500</b>
<b>General Expenditure</b>	<b>0</b>
DIRECT COSTS	458,220
INDIRECT COSTS	29,784
<b>TOTAL BUDGET</b>	<b>488,004</b>

#### Budget by Area of Intervention

AOF1	Disaster Risk Reduction	
AOF2	Shelter	170,400
AOF3	Livelihoods and Basic Needs	229,742
AOF4	Health	15,975
AOF5	Water, Sanitation and Hygiene	51,919
AOF6	Protection, Gender and Inclusion	
AOF7	Migration	
SFI1	Strengthen National Societies	6,124
SFI2	Effective International Disaster Management	9,585
SFI3	Influence others as leading strategic partners	4,260
SFI4	Ensure a strong IFRC	
<b>TOTAL</b>		<b>488,004</b>







16 March 2020  
MDREG0015  
FL-2020-000038 EGY



## Egypt- Floods Disaster Relief Emergency Funds



The maps used do not imply the expression of any opinion on the part of the International Federation of Red Cross and Red Crescent Societies or National Societies concerning the legal status of a territory or of its authorities.

0 0.0009 0.0018 0.0027 0.0036 km



## Reference documents



Click here for:

- Previous Appeals and updates
- Emergency Plan of Action (EPoA)

**For further information, specifically related to this operation please contact:**

**In the Egyptian Red Crescent (ERC)**

- CEO, Dr. Ramy Elnazer, phone: +201090000054 email: [Ramy.Elnazer@egyptianrc.org](mailto:Ramy.Elnazer@egyptianrc.org)
- Operational coordination: Dr. Mahmoud Tharwat, Head of Health and Care Department, phone: +201012995640 email: [Mahmoud.tharwat@egyptianrc.org](mailto:Mahmoud.tharwat@egyptianrc.org)

**In the IFRC**

- **IFRC Regional Office:** Dr. Hosam Faysal, Head of Disaster and Crisis (Prevention, Response and Recovery) – MENA; phone +961 71 802 916; email: [hosam.faysal@ifrc.org](mailto:hosam.faysal@ifrc.org)
- **IFRC Country Cluster Office:** Dr Iliana Mourad, Head of Country Cluster – North Africa; phone: +21658510807 ; email: [liana.mourad@ifrc.org](mailto:liana.mourad@ifrc.org)

**In IFRC Geneva**

- **Programme and Operations focal point:** Tiffany Loh, Senior officer, Operations coordination, phone: +41-79-251 8004 email: [tiffany.loh@ifrc.org](mailto:tiffany.loh@ifrc.org);
- Karla Morizzo, DREF Senior Officer; phone: +41 22 730 4295; email [karla.morizzo@ifrc.org](mailto:karla.morizzo@ifrc.org)

**For IFRC Resource Mobilization and Pledges support:**

- **IFRC Regional Office:** Anca Zaharia, MENA Regional Head of Partnership and Resource Development, phone: +961 813 11 918; email: [anca.zaharia@ifrc.org](mailto:anca.zaharia@ifrc.org)

**For In-Kind donations and Mobilization table support:**

- Dharmin Thacker, Acting Head of Logistics, Procurement and Supply Chain Management, phone: +961 5 428 505, email: [dharmin.thacker@ifrc.org](mailto:dharmin.thacker@ifrc.org)

**For Performance and Accountability support (planning, monitoring, evaluation and reporting enquiries)**

- **IFRC MENA Regional Office, Beirut:** Nadine Haddad, Regional PMER manager, phone: +961 71 802 775; email: [nadine.haddad@ifrc.org](mailto:nadine.haddad@ifrc.org)

## How we work

All IFRC assistance seeks to adhere to the **Code of Conduct** for the International Red Cross and Red Crescent Movement and Non-Governmental Organizations (NGO's) in Disaster Relief and the **Humanitarian Charter and Minimum Standards in Humanitarian Response (Sphere)** in delivering assistance to the most vulnerable. The IFRC's vision is to inspire, **encourage, facilitate and promote at all times all forms of humanitarian activities** by National Societies, with a view to **preventing and alleviating human suffering**, and thereby contributing to the maintenance and promotion of human dignity and peace in the world.

The IFRC's work is guided by Strategy 2020 which puts forward three strategic aims:



**Save lives,**  
protect livelihoods,  
and strengthen recovery  
from disaster and crises.



Enable **healthy**  
and **safe** living.



Promote social inclusion  
and a culture of  
**non-violence** and **peace.**