

www.ifrc.org
Saving lives,
changing minds.

Emergency Plan of Action (EPoA) Myanmar: Kachin Jade Mine Collapse

 International Federation
of Red Cross and Red Crescent Societies

DREF Operation n°	MDRMM014	Glide n°:	OT-2020-000159-MMR
Date of issue:	05/07/2020	Expected timeframe:	3 months
		Expected end date:	31/10/2020
Category allocated to the disaster or crisis: Red			
DREF allocated: CHF 129,413			
Total number of people affected:	244 HH (approximately 1,500 people)	Number of people to be assisted:	244 HH (approximately 1,500 people)
Provinces affected:	Kachin	Provinces/Regions targeted:	Kachin
<p>Host National Society(ies) presence (n° of volunteers, staff, branches): The Myanmar Red Cross Society (MRCS) is closely working with the International Federation of Red Cross and Red Crescent Societies (IFRC) in preparedness for monsoon season, as well as currently engaged to larger COVID-19 operation. Some Partner National Societies (PNSs) are supporting currently Emergency Management Fund of MRCS. Nationwide MRCS has 1,827 Emergency Response Teams (ERT) trained members ready for response and 44,000 volunteers of which 4,000 Red Cross volunteers active in the communities and township levels with ongoing COVID-19 operations throughout the country. MRCS also have 59 Red Cross volunteers in Public Health in Emergency (PHiE) level A (57) and level B (2), 290 in Epidemic Control for Volunteers (ECV) and nationwide 1,827 Emergency Response Teams (ERT) trained members ready for response.</p> <p>In Kachin, 55 Red Cross Volunteers (RCVs) and 10 members of Hpakant Town Red Cross committee are supporting the search and rescue, as well additional RCVs (PSS, cash transfer focus) will be providing support to victims and their families affected by mudslide.</p>			
<p>Red Cross Red Crescent Movement partners actively involved in the operation: The National Society is working with the IFRC and the International Committee of the Red Cross (ICRC) where both work in Kachin State.</p>			
<p>Other partner organizations actively involved in the operation: State Government Administration Department (GAD), Myanmar Department of Meteorology and Hydrology (DMH) and Department of Disaster Management (DDM). Weather forecast are monitored through Department of Meteorology and Hydrology. MRCS is working in close collaboration with fire department that is leading the search and rescue operations due to mudslide to recover the victims.</p>			

A. Situation analysis

Description of the disaster

Hpakant Township, in Kachin state experienced heavy rainfall for several days, then early morning on 2 July 2020, at 7:30 am local time, rainwater caused saturation of the soil at the jade mining area in Wai Khwar village, Seik Mu village tract and causing an erosion of land and mudslide down to the jade mine pit. The mudslide further triggered a formation of large wave of mud sweeping miners who were working in the mine pit, burying many of them under the thick layer of mud. Many of the miners were of daily-waged internal migrants from different parts of Myanmar.

By evening of 2 July 2020, when the rescue efforts initiated directly after collapse of land were led by the Myanmar Fire Department and supported by 55 MRCS Red Cross volunteers (RCV), 10 members of Hpakant Town Red Cross committee, and other local organizations. In the evening of the disaster, it was reported that a total of 164 fatalities were found and 44 people had been transferred to hospitals in Hpakant and Myitkina. The rescue efforts were stopped due

to darkness and worsening conditions. The fatality number is expected to rise more in the coming days when the affected areas are more accessible for the rescue efforts to finalize search for the bodies. Please click [here](#) to see the map of the affected area.

Hpakant area in Kachin is under large-scale precious stone operations with illegal and dangerous mining practices, where many freelance miners are working in extremely vulnerable and dangerous conditions where no labour law protection nor specific safety regulations exist. The miners are exposed to extremely fatal risks working in such condition and lack of safety precautions and procedures.

Summary of the current response

Overview of Host National Society

MRCS has formal roles and responsibilities that is part of the Myanmar national legal framework where MRCS is an auxiliary to the government with regards to humanitarian activities – which is defined by the national law and the government's disaster response plan.

MRCS has activated an Emergency Operation Center (EOC) where Kachin Township Branch is following MRCS' SOP for small-scale disaster with specific communication lines plus safety and protection of RCVs involving in the initial rescue operations.

Financial support through the Disaster Relief Emergency Fund (DREF) will provide MRCS the resources to support search and rescue (SAR) efforts, First Aid (FA), psychosocial support (PSS) to the affected people and their families, provision of PSS for RCVs involved in SAR and socioeconomic support to affected families.



Hpakant, Kachin – affected area of the jade mine collapse. (Source: Reuters)

MRCS warehouse is providing body bags to ensure safe and dignified transport of dead bodies, as well as provided first aid together with specific first aid items to support those who are injured and transportation of the injured to Hpakant Hospital.

Overview of Red Cross Red Crescent Movement in country

IFRC is providing support to the MRCS in developing Emergency Plan of Action (EPoA) and is coordinating updating of information to PNS in the country. Further involvement of relevant PNS is coordinated as per impact assessed in the coming days. IFRC Asia Pacific regional office in Kuala Lumpur is also providing support where monitoring information of mine incident is updated regularly from Myanmar IFRC country office.

ICRC is supporting on Restoring Family Links (RFL) aspect by providing MRCS phone credits for the affected families. ICRC are planning to support in terms of provision of lifejackets, boat, tarpaulins, ropes, body bags, life buoy and stretchers where quantities to be confirmed later. Danish Red Cross is offering one week of cash transfer support for the affected families while the proposed DREF is intended to support the affected people for three months.

Overview of other actors in country

The IFRC country office in Myanmar, in close collaboration with MRCS, is in communication with DMH and DDM for the planned operations considering the developing situation. MRCS is the co-chair of cash transfer working group coordinated by WFP, member of UN Readiness group coordinated by OCHA and a member of working group on Migration. Since the current mudslide is considered as a small-scale emergency, UN coordination mechanism is not taking place, but only a national level coordination mechanism is established to coordinate the emergency operation.

Needs analysis, targeting, scenario planning and risk assessment

Needs analysis

On 2 July 2020, MRCS branch volunteers were informed of the collapse of land and mudslide in a jade mine, located in Wai Khwar Village, Seik Mu village tract in Hpakant, Kachin state where most of internal migrant miners were buried under the mud. Immediate relief activities started at 12:05 hours local time. In the morning of 3 July 2020, total of 146 dead bodies were found and 44 injured miners were transported to local hospitals. Local government together with MRCS, are providing RFL support with regards to identification of victims and informing the families. The activities for this plan are complementary to the Danish Red Cross funded activities that target one week from incident on 2 July 2020 onwards where affected families are provided with immediate cash transfer.

Scenario planning

Scenario is drawn up rain intensifying/decreasing

Code	Scenario	Scenario Description	Organizational level Responding
	1. Current scenario with steady mild monsoon rains	Ground saturating more in mine, but SAR operations are finalised with no further landslides.	Same level as now.
	2. Worsening situation	Ground saturating more and causing no access to mine, SAR stopped.	No activities at mine.
	3. Worst Case Scenario	Intensified rains causing further large landslides and increased risk for further casualties. No access for MRCS to site.	No activities at mine.

Followings are the needs identified based on the current situation after initial week's support from Danish Red Cross which is being implemented by MRCS:

Search and Rescue

Search and rescue activities were initiated directly after the incident with 164 bodies recovered, and 44 injured transported to the local hospital. SAR effort continued from 8.00am on 3 July 2020 where no more people alive are expected to be found. All dead bodies and injured have been transported to Myitkina Hospital and Hpakant Hospital, and more fatalities are expected to be found as search operations continue when the weather conditions permit.

GAD and DDM is coordinating with MRCS on the SAR activities and follow up measures. Currently relief team on ground is led by the Chairman of Kachin State Supervisory Committee to assess situation and additional needs. MRCS RFL department will also provide prepaid telephone cards to the affected family and relatives of affected people so that they can communicate with relatives and families. MRCS RCV are also supporting the local authority who is following up with identification of undocumented and unidentified bodies as to provide information to the families of the deceased using a dignified and respectful approach to avoid re-traumatizing the affected family members. MRCS has also supported the affected family members standing by the mine and waiting to hear information about their loved ones by distributing water, food, and masks as COVID-19 preventative measure. MRCS has shared through MRCS Facebook page the RFL Hotline number (+09-957 557 000) where family members can reach out for more information of injured and deceased.

PSS

Specific measures are taken by MRCS RCVs with support in providing PSS to injured miners and their family members. The PSS is also extended to the families of the deceased who are deeply traumatized by the incident. Trained RCV will provide immediate PSS and as well as follow up visits in coming months.

On the other hand, this incident has directly affected MRCS RCV who were involved in SAR activities. Hence, specific PSS will be provided to them to help them to deal with trauma. Hpakant Town Red Cross committee (10 members) and 55 male RCVs have been involved in SAR activities and need to be supported with PSS.

Socioeconomic support

As per discussion with GAD and DDM, MRCS will be supporting the most affected families of the miners – whom deceased or injured miners are the heads of family. As the deceased and injured were mainly men, women in their households have become the main income provider and are thus highly vulnerable and in danger of extreme food and social insecurity and many of them are with children to feed (estimated minimum four children per family). Unconditional cash transfers will target a total of 244 households (total around 1,500 people) that either lost a family member or have an injured family member due to the mudslide.

Community Engagement and Accountability (CEA)

A wide range of platforms including social media (MRCS Facebook page with over 200,000 followers and twitter @MyanmarRedCross with 9,886 followers) and 330 offices at Township and branches level, reaching every area of the country, positioning MRCS well to implement CEA related activities for the affected the communities. MRCS has the experience to mainstream CEA throughout activities. MRCS will share timely and actionable information on operational activities with communities to keep them included and informed, using multiple channels. CEA activities specific to the mudslide operation will be incorporated in the following:

- Risk communication for seasonal hazards with focus on mudslides/landslides due seasonal intense rains in appropriate languages and forms will be used.
- Specific RFL related information for the affected families.

Reporting and information management

MRCS with support from IFRC will closely look into quality and timely reporting and effective information management through:

- Having records for all communication activities.
- Provide regular updates as part of the reporting processes.
- Timely input of information on to IFRC GO platform.
- Ensure all information on activation and provision of support are available on the MRCS website.

Public Communications

IFRC will support MRCS communications team to communicate with external audiences on the situation and the Red Cross Red Crescent humanitarian response, with the aim of generating visibility and support for the humanitarian needs and the Red Cross response:

- Regularly providing information on provision of humanitarian support available on the MRCS Facebook site and across other social media and media channels.
- Have in place a coordination meeting within MRCS for communications purposes where IFRC Myanmar country office communication coordinator will actively involve in providing external communications.
- Sharing information with IFRC global channels through communication coordinator to IFRC Myanmar country office, IFRC Asia Pacific and through IFRC GO platform.
- As needed, commonly agreed key messages will be produced together with written and audio-visual content, and relevant social media and digital products. Communications content will be promoted on IFRC channels and shared with National Societies in the IFRC network. Media and social media scanning will measure effectiveness and contribute to risk management.

Targeting

MRCS is targeting 1,500 people including affected people and their family members. MRCS is giving priority to the most affected families of the miners – whom deceased or injured miners are the heads of family. Since the deceased and injured were mainly men, women in their households have become the head of their families and responsible to be the main income providers. MRCS is also prioritizing affected people that represent the poorest and most vulnerable part of communities.

State/Region	Fatalities	Injured	Families supported
Kachin	164* (200)	44	244

* Please note that 164 is fatalities as of morning of 3 July 2020 and number is expected to rise to at least 200.

Operation Risk Assessment

With the weather condition predicted to be worsening, there is a high possibility for the saturation of soil at the jade mine to worsen. In case worsening of soil saturation, more landslides can occur. MRCS will look into these measures if such incident occurs:

- Safety of MRCS staff and volunteers is most crucial. Hence preparedness for safety of volunteers and staff working directly at the mine will be enhanced. Preparedness for safety of volunteers and staff working COVID-19 modalities: MRCS staff and volunteers is core for business continuity for pandemic and therefore, prioritization to provide Personal Protective Equipment, soap and handwashing possibility are set up to be able to operationalize response activities.
- Everyone involved are still bound to be exposed on COVID-19. In line with the COVID-19 emergency operations: Prioritization to provide personal protective equipment, soap and handwashing facilities during the evacuation and distributions.
- Insurance of volunteers involved to the operations is covered under existing operations COVID-19 and programs DRM.

B. Operational strategy

Overall Operational objective:

The overall objective of this DREF Operation is to support 1,500 people in operation comprising of search and rescue efforts of the affected miners due the collapse of jade mine in Hpakant Township, Kachin state and as well as provision of first aid support to the injured people, identification of undocumented/unidentified victims and restoring links with their families, PSS for both affected people and MRCS volunteers. This DREF Operation will also covers economical support to the affected people and their families that represent the poorest and most vulnerable part of communities.

This DREF operation is expected to be implemented within three months, to be completed by 31 October 2020. The proposed operational strategy aims at reaching out to the people affected to:

- Search and rescue for victims.
- First aid support for injured miners.

- Assist with identifying if any additional evacuation needs due to possible additional collapse due continuing rains.
- PSS support to affected people including their families, and as well as MRCS volunteers directly in the SAR activities. Since many of the injured and deceased came from different part of Myanmar (internal migrants to Kachin state), MRCS branches will continue to follow up on providing PSS to affected family members through MRCS' 330 branches.
- Informing death of the victims to their families in dignified manner as requested by local authority.
- Providing prepaid cards for affected people and their families to call families/relatives. (ICRC funded).
- Socioeconomic support for affected people and family members whose economic activities disrupted due to the incident.
- Consideration and adherence of COVID-19 safe modalities for volunteers and staff in the field.

As per above, items required for SAR activities are: 164 body bags and 10 spinal boards. For first aid, specific first aid materials were used to treat the injured 44 people (as per figures on 3 July 2020). Numbers of fatalities are expected to rise since many of the deceased are yet to be identified (undocumented internal migrants).

Security

MRCS security framework will apply throughout the duration of the operation to their staff and volunteers. Staff and volunteers of MRCS to be advised to do online learning (Stay safe). For personnel under IFRC security's responsibility, including surge support and integrated PNS deployed to the area, the existing IFRC country security plan, including security regulations, contingency plans for medical emergencies, relocation and critical incident management to be applied. All staff and volunteers are required to complete Stay Safe online course. The IFRC security focal point will brief personnel working in the field on the evolving situation, the relevant evacuation routes and contingency plan processes to ensure they operate safely. Safety and security risks were identified in the IFRC risk assessment for Myanmar. In specific cases such as areas with potential armed conflict in proximity to targeted areas, MRCS and IFRC to discuss mitigation measures to ensure staff and volunteer safety.

The Asia Pacific Regional Security Unit continues to actively support the IFRC CO as well as National Society Security Managers and Focal Point through information gathering/sharing, providing security guidelines, security coordination and cooperation within Movement partners as well as with external partners and the humanitarian community.

Funding Requirements

International Federation of Red Cross and Red Crescent Societies

*all amounts in
Swiss Francs
(CHF)*

DREF OPERATION

MDRMM014 - MYANMAR – KACHIN JADE MINE COLLAPSE

5/7/2020

Budget by Resource

Budget Group	Budget
Medical & First Aid	1,330
Other Supplies & Services	4,320
Cash Disbursement	102,480
Relief items, Construction, Supplies	108,130
Distribution & Monitoring	350
Transport & Vehicles Costs	280
Logistics, Transport & Storage	630
Volunteers	11,844
Personnel	11,844
Workshops & Training	700
Workshops & Training	700
Communications	210
General Expenditure	210
DIRECT COSTS	121,514
INDIRECT COSTS	7,898
TOTAL BUDGET	129,413

Reference documents



Click here for:

-

For further information, specifically related to this operation please contact:

In the Myanmar Red Cross Society

- Prof. Dr. Htin Zaw Soe, secretary general; phone: +95 9 973 101 474; email: htinzawsoe@redcross.org.mm
- Daw San Maw, head of DM department; phone: +95 9 9771 5665; email: sansanmaw@redcross.org.mm

In the IFRC Myanmar Country Office

- Joy Singhal, head of country office; email: Joy.Singhal@ifrc.org
- Anna Beloff, DRM delegate; email: annamaija.beloff@ifrc.org

In IFRC Asia Pacific Regional Office, Kuala Lumpur

- Mohammed Omer Mukhier, deputy regional director; email: mohammedomer.mukhier@ifrc.org
- Necephor Mghendi, head of DCPRR; email: necephor.mghendi@ifrc.org
- Nur Hayati Ahmad, operations coordinator; email: OpsCoord.southeastasia@ifrc.org
- Antony Balmain, Communications Manager, +60-12-230-8451, antony.balmain@ifrc.org

For planning, monitoring, evaluation and reporting (PMER) enquiries

- Liew Siew Hui, PMER manager; email: siewhui.liew@ifrc.org

In IFRC Geneva

- Nelson Castano, manager, operations coordination, email: nelson.castano@ifrc.org
- Eszter Matyeka, senior officer, DREF; email: eszter.matyeka@ifrc.org
- Karla Morizzo, senior officer, DREF; email: karla.morizzo@ifrc.org

How we work

All IFRC assistance seeks to adhere to the **Code of Conduct** for the International Red Cross and Red Crescent Movement and Non-Governmental Organizations (NGO's) in Disaster Relief and the **Humanitarian Charter and Minimum Standards in Humanitarian Response (Sphere)** in delivering assistance to the most vulnerable. The IFRC's vision is to inspire, **encourage, facilitate and promote at all times all forms of humanitarian activities** by National Societies, with a view to **preventing and alleviating human suffering**, and thereby contributing to the maintenance and promotion of human dignity and peace in the world.

The IFRC's work is guided by Strategy 2020 which puts forward three strategic aims:



Save lives,
protect livelihoods,
and strengthen recovery
from disaster and crises.



Enable **healthy**
and **safe** living.



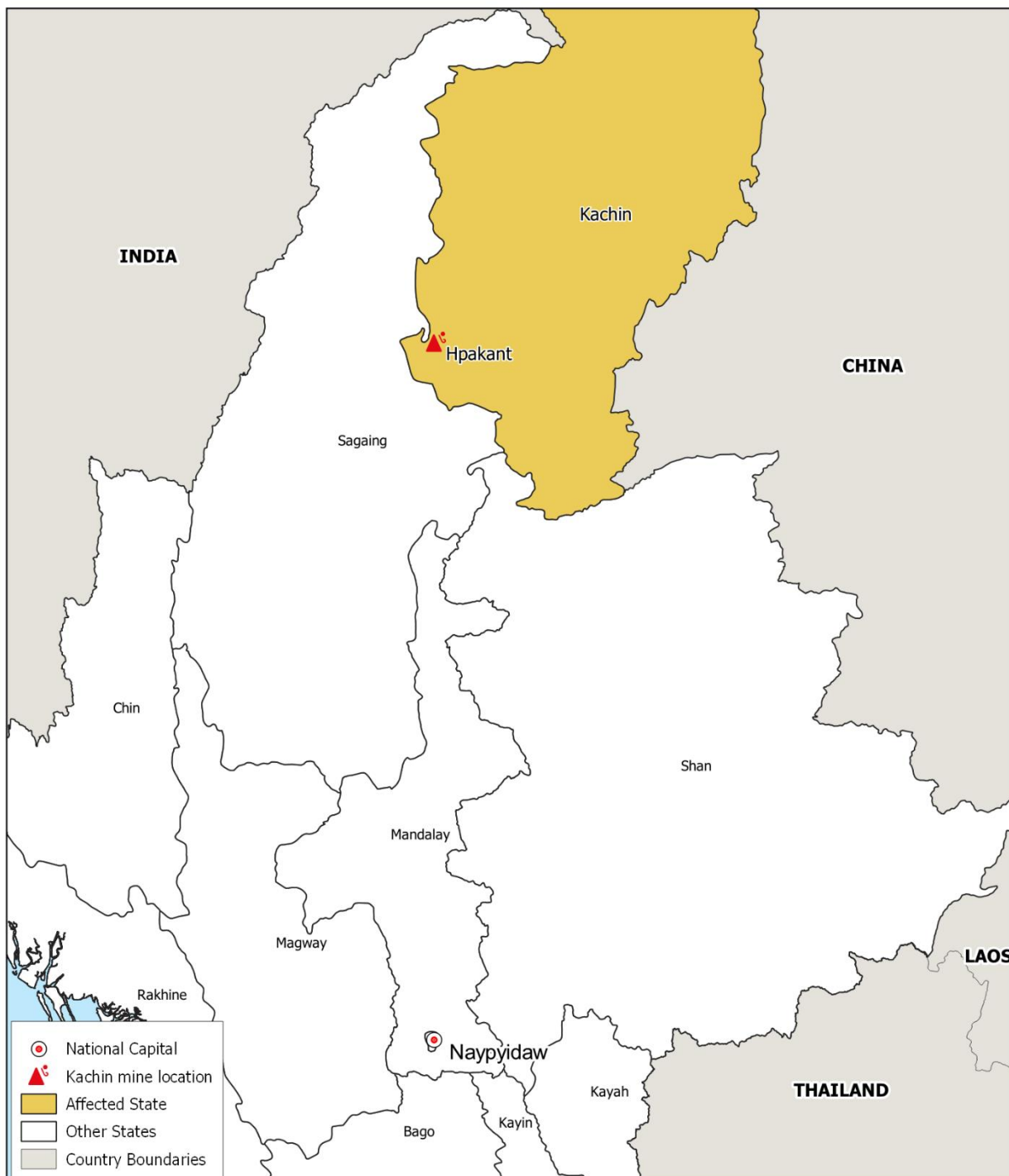
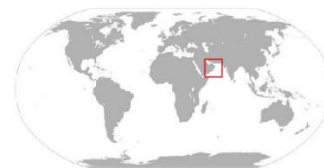
Promote **social inclusion**
and a culture of
non-violence and **peace.**

Map of affected area



Myanmar: Kachin Mine Collapse
Emergency Plan of Action (EPOA)

3 July 2020



- National Capital
- Kachin mine location
- Affected State
- Other States
- Country Boundaries

The maps used do not imply the expression of any opinion on the part of the International Federation of the Red Cross and Red Crescent Societies or National Societies concerning the legal status of territory or its authorities. Map data sources: OCHA, OSM Contributors, ICRC, IFRC

