


www.ifrc.org
Saving lives,
changing minds.

Emergency appeal Serbia: Floods

 International Federation
of Red Cross and Red Crescent Societies

Emergency Appeal n° MDRRS009	Glide n° FF-2014-000059-SRB	Launched: 27 May 2014
12,400 families to be assisted	Appeal timeframe: 9 months	End date: February 2015
DREF allocated: CHF 290,926	Appeal budget: CHF 4,485,096	

This **Emergency Appeal** seeks **CHF 4,485,096** to enable the IFRC to support the Red Cross of Serbia to **deliver assistance and support to 12,400 flood-affected families (some 49,600 people)**, with a focus **on the provision of food and non-food items, water and sanitation, shelter, hygiene promotion, psychosocial awareness, and to support their recovery**. The planned response reflects the information available at this point of the evolving operation, and will be adjusted based on further developments and more detailed assessments.

Further details are available in the **Emergency Plan of Action**. [<click here for the EPoA>](#)

Summary of the disaster and Red Cross Red Crescent action

13 May 2014

Torrential rains in Serbia, with rainfall normally experienced over a two-month period falling in just two days.

State of emergency lifted, but remains in effect for some regions

21 May 2014

CHF 290,926 allocated from DREF

23 May 2014

Facts and figures

- 33 casualties
- 2,260 flooded houses
- 1,763 houses demolished
- 31,879 evacuated people
- 140 collective centres
- 1,6 million people affected (22%)
- Recovery cost: USD 1.4 billion
- 155 schools remain closed

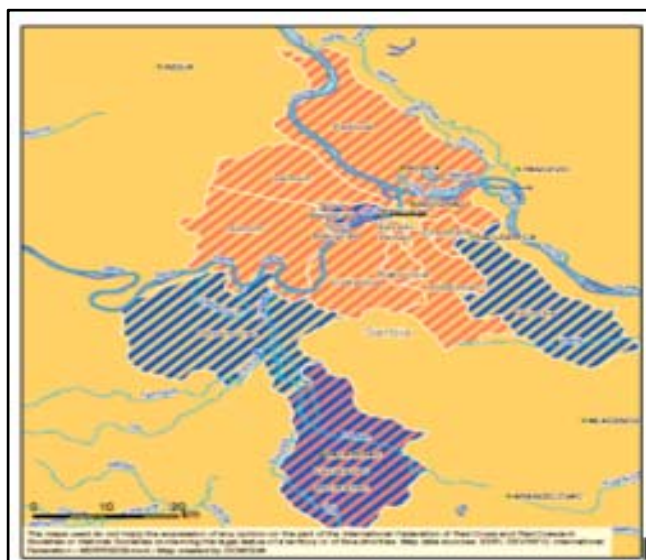
24 May 2014

120,000 households without electricity. Road network has suffered significant damage. Railway line from Serbia to the Montenegro port is impassable for at least one month.

Major challenges for the movement of goods; major impact for small businesses. More rainfall is predicted in the coming 2 weeks.



Red Cross of Serbia Smederevo branch mobile technical team assessment in the field. *Photo: RCS*

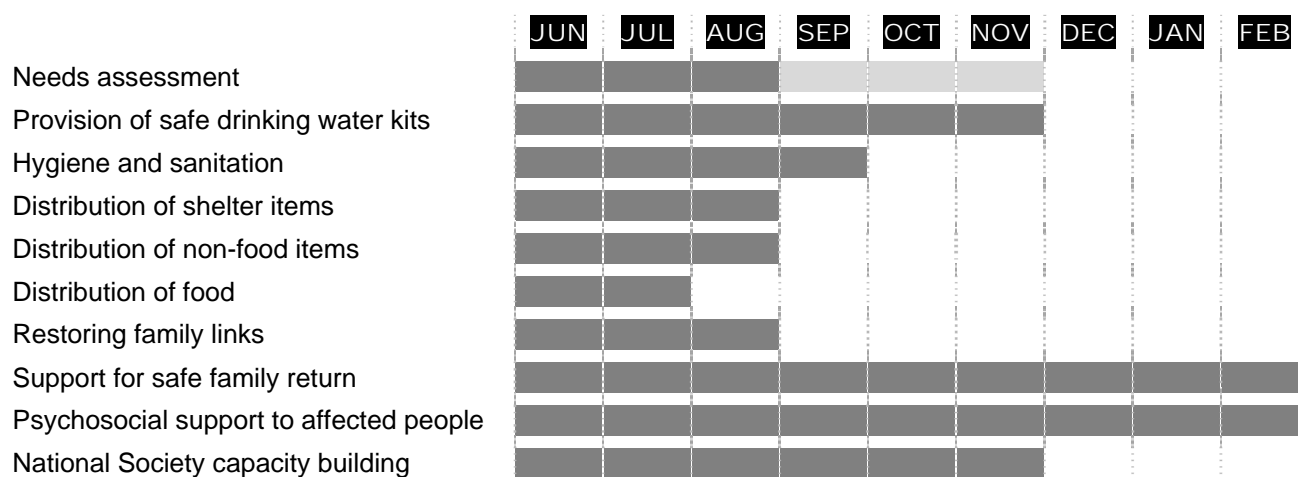


The operational strategy

Beneficiary selection: Preliminary assessments reports indicate the following key priorities for the flooded areas:

- Emergency shelter and support for cleaning houses;
- Food and basic household non-food items;
- Safe drinking water, provision of hygiene items, and sanitation;
- Restoring family links (RFL) support.

Based on the above, the main operational components and related timeframes are reflected below.



Budget

See attached IFRC Secretariat budget (Annex 1) for details.

Walter Cotte
Under Secretary General
Programme Services Division

Bekele Geleta
Secretary General

Contact Information

For further information specifically related to this operation please contact:

- **Red Cross of Serbia:** Vesna Milenovic, Secretary General;
phone: +381 11 30 32 125; email secretary@redcross.org.rs
- **IFRC Europe Zone Office:**
 - Mette Petersen, Head of Country Cluster,
phone:+36 1 888 4515; email: mette.petersen@ifrc.org
 - Alberto Monguzzi, Disaster Management Coordinator;
phone:+36 1 888 4500; email: alberto.monguzzi@ifrc.org
- **IFRC Geneva:** Cristina Estrada Operations Support;
phone: +41.22.730.4260, email: cristina.estrada@ifrc.org



Click here

1. **Emergency Appeal budget and map [below](#)**
2. **Click [here](#) to return to the title page**

How we work

All IFRC assistance seeks to adhere to the Code of Conduct for the International Red Cross and Red Crescent Movement and Non-Governmental Organizations (NGO's) in Disaster Relief and the Humanitarian Charter and Minimum Standards in Disaster Response (Sphere) in delivering assistance to the most vulnerable.

The IFRC's vision is to inspire, encourage, facilitate and promote at all times all forms of humanitarian activities by National Societies, with a view to preventing and alleviating human suffering, and thereby contributing to the maintenance and promotion of human dignity and peace in the world.

www.ifrc.org
Saving lives, changing minds.



The IFRC's work is guided by Strategy 2020 which puts forward three strategic aims:

1. Save lives, protect livelihoods, and strengthen recovery from disaster and crises.
2. Enable healthy and safe living.
3. Promote social inclusion and a culture of non-violence and peace.

EMERGENCY APPEAL

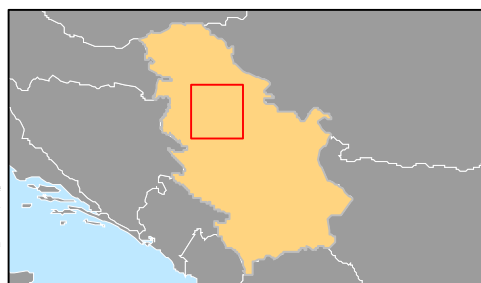
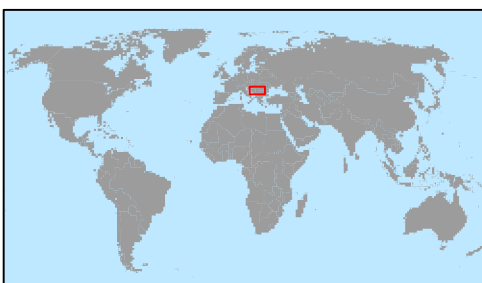
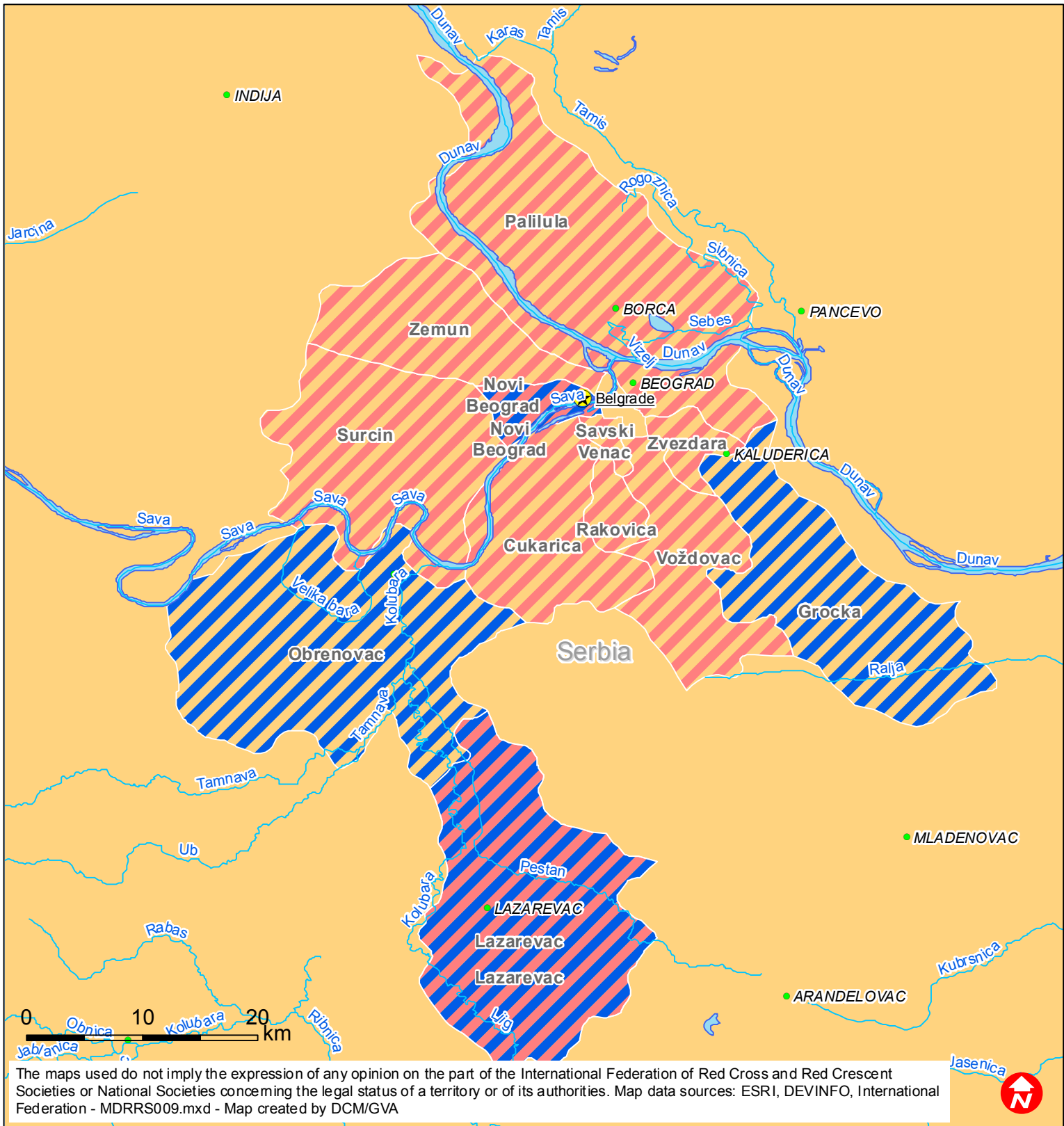
26-05-14

MDRRS009 Serbia

Budget Group	Multilateral Response	Inter-Agency Shelter Coord.	Bilateral Response	Appeal Budget CHF
Shelter - Relief				0
Shelter - Transitional				0
Construction - Housing				0
Construction - Facilities				0
Construction - Materials				0
Clothing & Textiles	72,000			72,000
Food	3,054,425			3,054,425
Seeds & Plants				0
Water, Sanitation & Hygiene	59,320			59,320
Medical & First Aid				0
Teaching Materials				0
Utensils & Tools	310,300			310,300
Other Supplies & Services	70,000			70,000
Emergency Response Units				0
Cash Disbursements				0
Total RELIEF ITEMS, CONSTRUCTION AND SUPPLIES	3,566,045	0	0	3,566,045
Land & Buildings				0
Vehicles	229,326			229,326
Computer & Telecom Equipment				0
Office/Household Furniture & Equipment				0
Medical Equipment				0
Other Machinery & Equipment				0
Total LAND, VEHICLES AND EQUIPMENT	229,326	0	0	229,326
Storage, Warehousing	22,000			22,000
Distribution & Monitoring	20,000			20,000
Transport & Vehicle Costs	10,000			10,000
Logistics Services				0
Total LOGISTICS, TRANSPORT AND STORAGE	52,000	0	0	52,000
International Staff				0
National Staff				0
National Society Staff	103,600			103,600
Volunteers	50,600			50,600
Total PERSONNEL	154,200	0	0	154,200
Consultants				0
Professional Fees	80,000			80,000
Total CONSULTANTS & PROFESSIONAL FEES	80,000	0	0	80,000
Workshops & Training	35,700			35,700
Total WORKSHOP & TRAINING	35,700	0	0	35,700
Travel	16,000			16,000
Information & Public Relations	53,500			53,500
Office Costs	12,300			12,300
Communications	9,000			9,000
Financial Charges				0
Other General Expenses				0
Shared Office and Services Costs				0
Total GENERAL EXPENDITURES	90,800	0	0	90,800
Partner National Societies				0
Other Partners (NGOs, UN, other)				0
Total TRANSFER TO PARTNERS	0	0	0	0
Programme and Services Support Recovery	273,525	0		273,525
Total INDIRECT COSTS	273,525	0	0	273,525
Pledge Earmarking & Reporting Fees	3,500			3,500
Total PLEDGE SPECIFIC COSTS	3,500	0	0	3,500
TOTAL BUDGET	4,485,096	0	0	4,485,096
Available Resources				
Multilateral Contributions				0
Bilateral Contributions				0
TOTAL AVAILABLE RESOURCES	0	0	0	0
NET EMERGENCY APPEAL NEEDS	4,485,096	0	0	4,485,096



Serbia: Floods



- Main cities
- ▨ Most affected areas
- ▨ Targetted areas