

www.ifrc.org
Saving lives,
changing minds.

Emergency Appeal Operation Update

Ebola Virus Disease Emergency Appeals (Guinea, Liberia, Sierra Leone and Global Coordination & Preparedness)

 International Federation
of Red Cross and Red Crescent Societies

Combined Monthly Ebola Operations Update N° 28¹

15 December 2015

Current epidemiological situation + country-specific information

The spread of Ebola in West Africa has slowed intensely, but enormous challenges remain in conquering this scourge while re-establishing basic social services and building resilience in Guinea, Liberia and Sierra Leone. This unparalleled outbreak has hit some of the most vulnerable communities in some of the world's poorest countries.

On 20 November 2015, the Government of **Liberia** confirmed three new cases of Ebola from a family of six living in an area of Monrovia. All the cases were transferred to an Ebola Treatment Unit (ETU). One of the three confirmed cases, a boy, died on 23 November. His brother and father continued with the treatment.

There have not been any additional/new confirmed cases so far. A total of 166 contacts related to the current cluster were listed and continued with daily follow-up. The contacts are being seen by contacts tracers and remained asymptomatic.

According to the WHO Ebola Situation Report of 2 December 2015, these recent cases in Liberia highlight the importance of robust surveillance measures to ensure the rapid detection of any reintroduction or re-emergence of EVD in currently unaffected areas.



School children practicing proper handwashing before classes begin in Montserrado, Liberia in October 2015. LNRCS supported by IFRC has been distributing handwashing kits, soap, chlorine and no-touch thermometers to over 500 schools across the country.

Photo: IFRC

IFRC's Ebola virus disease (EVD) strategic framework is organised around five outcomes:

1. The epidemic is stopped;
2. National Societies (NS) have better EVD preparedness and stronger long-term capacities;
3. IFRC operations are well coordinated;
4. Safe and Dignified Burials (SDB) are effectively carried out by all actors;
5. Recovery of community life and livelihoods.

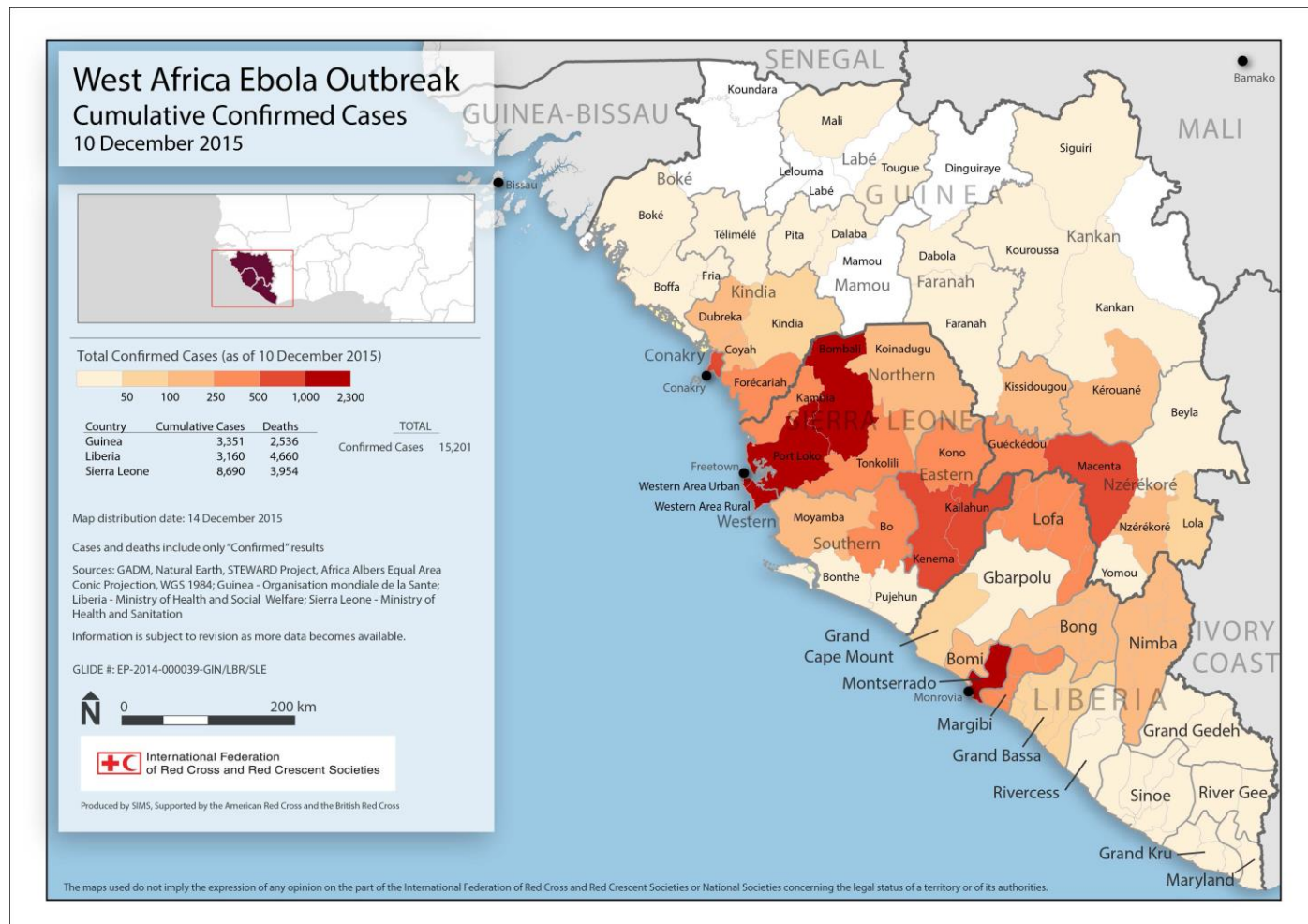
Helping stop the epidemic, the EVD operations employ a five pillar approach comprising: (i) Beneficiary Communication and Social Mobilization; (ii) Contact Tracing and Surveillance; (iii) Psychosocial Support; (iv) Case Management; and (v) Safe and Dignified Burials (SDB) and Disinfection; and the revision has included addition sector on recovery basically covering food security, livelihoods and disaster risk reduction.

Six emergency appeals were launched to respond to and combat EVD outbreaks in Guinea, Liberia, Sierra Leone, Nigeria and Senegal. Those in Guinea, Liberia and Guinea are still active whilst coordination and technical support continues at the regional level. The Ebola emergency appeals have been revised to anticipate a longer-term vision as operations head toward recovery. The revised appeals can be found at <http://ifrc.org/en/publications-andreports/appeals/> and are currently planned to end in December 2017.

Smaller preparedness and response operations were financed by the IFRC Disaster Response Emergency Fund (DREF) in Mali, Cote d'Ivoire, Cameroon, Togo, Benin, Central African Republic, Chad, Gambia, Kenya, Guinea Bissau and Ethiopia. In total, 16 countries in Africa launched emergency operations relating to this outbreak.

¹ A single combined operations update is produced for the 4 Ebola operations on a monthly basis.

In order to achieve objective 2 of the phase 3 response framework – to manage and respond to the consequences of residual Ebola risks – Guinea, Liberia, and Sierra Leone have each put surveillance systems in place to enable health workers and members of the public to report any case of illness or death that they suspect may be related to EVD to the relevant authorities.



In the week to 29 November, 18,014 such alerts were reported in Guinea, with alerts reported from all of the country's 34 prefectures. Equivalent data are not currently available for Liberia. In Sierra Leone, 1,420 alerts were reported from all 14 districts in the week ending 15 November (the most recent week for which data are available). As part of each country's EVD surveillance strategy, blood samples or oral swabs should be collected from any live or deceased individuals who have or had clinical symptoms compatible with EVD. Reports specify that the new Ebola patient did not have any earlier known contact with an Ebola survivor or casualty, nor has recently travelled to Guinea or Sierra Leone, nor attended a burial, raising questions about the origin of transmission. Investigations are ongoing into the origin of infection of the 3 confirmed cases reported from Liberia in the week to 22 November.

Liberia was previously declared free of Ebola transmission on 3 September 2015. The WHO judges a country "free of Ebola transmission" when 42 days pass without a new case of the haemorrhagic fever.

As of 30 November it had been 14 days since the last EVD patient in **Guinea** received a second consecutive EVD-negative blood test. The last case in Guinea was reported on 29 October 2015. The last remaining patient being treated for EVD in Nongo ETC, Conakry, received a definitive second negative test on 16 November. Guinea has now started the 42-day countdown to declaring the end of human-to-human Ebola transmission. If no new cases emerge, the end of such transmission will be declared on 28 December.

In **Sierra Leone**, the end of Ebola transmission was declared on 7 November. On 7 November WHO declared that Sierra Leone had achieved objective 1 of the phase 3 framework, and the country has now entered a 90-day period of enhanced surveillance scheduled to conclude on 5 February 2016.

Ebola Emergency Appeals: Summary Update on Resource Mobilization

Appeal	Guinea MDRGN007	Liberia MDRLR001	Sierra Leone MDRSL005	Coordination & Preparedness MDR60002	Total Figures (CHF)
Budget	56.0 million	46.3 million	94.6 million	15.8 million	215.7 million
Income to date	33.7 million	22 million	59.9 million	11.8 million	128 million
Coverage	60%	48%	63%	74%	59%
Funding gap	22.3 million	24.3 million	36.5 million	4.0 million	87 million

Funding priorities: IFRC is urging donors to commit non-earmarked funds with longer timeframes

Operation Updates

Latest available cumulative data are provided below for 11 situation and programme indicators.

	Operational Countries and Appeals			
	GUINEA	LIBERIA	SIERRA LEONE	TOTAL
	(MDRGN007)	(MDRLR001)	(MDRSL005)	
² *Cumulative Cases	3,351	10,675	13,911	27,937
*Cumulative Health Care Worker Deaths	100	192	541	833
*Cumulative Deaths	2,083	4,809	3,955	10,847
*Fatality rate	62.2%	45%	28%	38.8%
Safe and Dignified Burials (SDB) conducted by NS	23,713	3,825	28,781	56,319
Trained RC volunteers active in Ebola	852	142	4,924	5,918
Contacts traced by NS	1,295	7,827	97,160	106,282
Houses disinfected by NS	33,851	2,818	21,411	58,080
People reached through face to face Social Mobilization	2,217,430	2,411,220	3,519,684	8,148,334
People reached through Psychosocial support	10,750	8,953	399,560	419,263
People treated by NS	N/A	N/A	N/A	

Guinea

By 30 November in Guinea, it has been 33 days with no new cases reported in the country. This brings the countdown to the end of the epidemic to day 14 by the end of November 2015 (this also coincided with day 17 of zero cases to follow up). As of 1 December, no new cases have been reported in Guinea and Guinea has started the 42-day countdown towards declaring the end of human-to-human Ebola transmission.

A. Social mobilization and beneficiary communication

Highlights

- A total of 120,660 persons were reached through Social Mobilization and ordinary community engagement sessions held by volunteers in prefectures during funerals and routine activities,
- Production and broadcast of 12 interactive radio shows carried out on Radio Tamata station. The themes for these shows were: Strengthening of hygiene measures; vigilance during the 42-day countdown to the end of Ebola; reporting of foreigners or new comers to the community as part of surveillance. In total, 48 phone calls and 6 SMS were received,
- Distribution of 3,654 solar radio sets to most vulnerable families (who do not have capacities to purchase their own radio set) in sub-préfectures of Benty, Sikhourou and Moussayah in Forécariah,
- Broadcast of radio programs on the Red Cross owned Radio Santéya FM in Forécariah (Sub-Prefecture of Benty). The following activities were achieved:
 - ✓ 49 magazines were distributed, 74 reports were made, 67 vox pops, 18 round tables were held, 26 debates conducted with community members, 12 radio games with Ebola specific themes were done.

A number of inter-pillar activities (Bencom and surveillance) were also conducted as part of cross-border activities implementation: As a result,

- 4,034 households or 18,222 people were reached by door to door awareness,
- 565 persons reached by community dialogues held with Ebola victims,
- 128 people reached by specific sensitization to religious leaders during 8 sessions,
- 176 participants reached during 4 community educational talk meetings,
- 784 students reached through 5 mass awareness sessions in schools,
- 8,725 people reached during 18 mass awareness sessions in market places located at the border with neighbouring countries (Sierra Leone and Guinea Bissau).

Challenges

The following challenges were experienced in the course of implementation of activities:

- Passive reluctance resulting in handling of bodies by family members prior to the arrival of SDB teams,
- Laxity in practising good hygiene.

Planning

The following activities are envisaged:

- Setting up information kiosks in 30 villages along the border with Sierra Leone and the urban commune of Forécariah,
- Continued distribution of hygiene kits,
- Continued hygiene promotion sessions,
- Continued community door-to-door sensitization activities in the prefecture of Forecariah, Boke and 5 communes of Conakry,
- Continued radio programs broadcast through the Red Cross radio owned Santeya FM.

B. Psychosocial Support

Highlights:

- Red Cross Training on Stress management in the prefecture of Conakry for 154 volunteers,
- Emotional debriefing sessions for 226 volunteers involved in SDB activities,
- Follow up of the 100 families affected by Ebola who also benefited from condolences kits in Dubreka,
- Official handover of a house fully constructed by the Red Cross for a family affected by Ebola in Dixinn,
- Purchase of spectacles for a 14 year old girl with vision disorder due to Ebola in Conakry.

Planning:

- Provide PSS and counselling to Ebola survivors in the lower coastal prefectures of Guinea,
- Ensure the health follow up and regular check-up for Ebola-cured persons,
- Enhance peace building activities to reduce stigma to Ebola survivors in the community,
- Continue stress management activities for volunteers and the Red Cross staff involved in SDB,
- Extend socio-economic support to family members of Ebola victims.

C. Contact Tracing and Surveillance

Monitoring activities continued in the two prefectures (Forécariah and Boke) in November by focusing on the consolidation of the community surveillance-based approach and extension of activities in new cross-border villages.

Highlight:

In Forécariah

- 4,034 households were reached by volunteers during door-to-door sensitization allowing a total of 18,222 people to be informed about the importance of community based surveillance and how to implement the approach. This also took place in Boke region.
- 565 persons reached by community dialogues organized in 10 areas with the support of proximity supervisors/volunteers. This was also undertaken in Boke region.
- 31 suspect patients were referred to health facilities by surveillance volunteers,
- 27 foreigners were identified by surveillance volunteers and placed under close surveillance,



Maintaining good hygiene and sanitation practices amongst the community members remains the motto of the Red Cross volunteers as a means of preventing further Ebola outbreaks.

Photo: GRC-Forécariah

In order to ensure systematic SDBs in the whole region of lower Guinea, surveillance volunteers issued 17 alerts of community deaths to SDB teams.

- 178 pairs of boots and waterproof coats and 18 bicycles were distributed amongst volunteers to facilitate their work,

Challenges:

The main challenges experienced by volunteers remains the terrible road conditions that hamper access to remote communities. This is in addition to bad or inexistent mobile phone networks to facilitate communication.

D. Case Management in Red Cross Ebola Treatment Centres – Macenta

No activities were reported during this reporting period.

E. Safe and Dignified Burials and Disinfections of Houses

Highlight

- A total of 2,415 SDBs were conducted during the reporting period,
- 1,511 houses and other places reached with disinfection,
- Zero cases reported in-country, therefore there were no active zone across the country,
- Elaboration and validation of the hygiene-sanitation strategy and bodies management during epidemics in Guinea,
- Launch of the pilot phase in the prefecture of Forécariah.

Challenges

- Difficulties experienced in implementing the new hygiene-sanitation and bodies management strategy in all targeted prefectures,
- Scaling down of SDB teams as the epidemics trend decreases,
- More than 70% of the bodies are handled before the arrival of SDB teams.

Planning:

- Conduct the National Disaster Response Team (NDRT)-WatSan training workshop with nationwide participants,
- Scale-up the implementation of the ABC approach in the targeted prefectures,
- Scale-up the transfer of competencies to the National Societies,
- Support the setting up of regional early warning systems and epidemics response teams,
- Continue SDBs as required as part of government measures.

Liberia

On 20 November 2015, the Government of Liberia confirmed three new cases of EVD from a family of six living in the capital Monrovia. No new cases have been reported since 20 November 2015, but contacts are being monitored. These are the first new Ebola cases in Liberia, since the country was declared free from the disease a second time on 3 September 2015. LNRCS/IFRC immediately activated teams to respond to the new outbreak of EVD case. In the wake of these new cases, the following activities have been undertaken:

Contact tracing: A total of 166 contacts related to the current cluster are listed and on daily follow-up. As of 9 December, they remained asymptomatic. Initial contacts, including healthcare workers, have completed 20/21 days of observation.

A. Social Mobilization and Beneficiary Communication

Highlights

- A joint field mission was conducted by health and BenComms unit to analyse the situation and response. Both the LNRCS/IFRC are actively engaged in coordination, IPC, health promotion, Social Mobilization and PSS activities.
- A total of 20 volunteers have been trained on Social Mobilization by the Ministry of Health and UNICEF to conduct awareness regarding signs and symptoms and protection from Ebola.
- IPC materials i.e. 200 buckets, 4 buckets of chlorine were distributed to the affected communities while 250 pairs of rain boots were donated to the county health team.

- The IFRC health team is also working with BenComms on the upcoming Research on EVD community engagement and health promotion which will focus on assessing how IFRC contributed to saving lives during the EVD crisis.

B. Psychosocial Support

Highlights

- The PSS team conducted refresher training for 35 PSS volunteers and government health staff on Psychological First Aid (PFA); active listening; child protection and community entry approach. This was implemented in collaboration with Red Cross/UNICEF/IMC/MoGCSP.
- Counselling of Ebola patients/survivors and their families, contacts and quarantined persons; and engagement of community leaders played a central role in reducing stigma, and adherence to preventive messages.
- The PSS team also contributed to identifying economic, health, food and non-food supply needs for survivors, contacts and those under observation. This provided timely information to logistics, food, case management and other pillars for follow-up actions.
- PSS services need to continue beyond the observation period, including community dialogues, identifying and providing support to survivors such as enrolment to survivors' healthcare programs.

C. Safe and Dignified Burials and Disinfection of Houses

Highlights

- Following the IMS meeting, 11 thematic teams (response pillars) were established. These include coordination, case investigation/contact tracing, laboratory, case management, Infection Prevention and Control (IPC), health promotion and Social Mobilization, Psycho Social Support, logistics, food, WASH, and safe burial.

D. Surveillance – Active Case Finding

Highlights

- There is no additional new confirmed case; so far the number of confirmed Ebola cases remains at three including two siblings (one deceased) and their father.

E. Case Management in Red Cross ETC, Macenta

Highlights

- It should be noted that case management is being implemented bilaterally by French Red Cross in Guinea.

Sierra Leone

As of 1 December, no new cases have been reported in Sierra Leone. Sierra Leone has entered a 90-day period of enhanced surveillance, which is scheduled to conclude on 5 February 2016.

On advice from WHO, the outbreak in Sierra Leone was declared over on 7 November. Currently increased emphasis is being placed on continued enhanced surveillance which is scheduled to be in place until 5 February 2016. The key actor in the response against the virus, the National Ebola Response Centre (NERC), will be wound down at the end of the year and will hand over its functions to the Office of National Security and the Ministry of Health and Sanitation (MoHS). Safe and Dignified Burials (SDB) are no longer mandatory within the transition plan with a much reduced number of teams on stand-by to deal with suspicious deaths as set out in a new case definition. As a result, Red Cross and other agencies including

the MoHS have dramatically reduced the number of SDB teams from 143 to 28. None of the remaining teams are managed by the Red Cross.

An inter-agency group of which the Red Cross is an active member, held a series of meetings in November to develop a Rapid Response Plan (RRP). The group defined the roles and responsibilities of organizations for each key functional area, mapped out the available resources and identified existing gaps. The plan, which was finalized in late-November, emphasizes the capacity in the country to respond immediately to a new flare and urges the responsible organizations to maintain agreed response capacities throughout 2016.

A. Social Mobilization; Community Engagement and Beneficiary Communications

Highlights and achievements.

- To prepare the 800 beneficiaries for entry into the UNDP – IFRC Reskilling and Reintegration Project, assessment training was conducted for the PSS Officers and the SDB team leaders. The trainings focused on the collection of data and assessment on the level of stress and/or trauma experienced (if any) faced by the volunteers and their respective coping mechanisms.
- Following the training, teams composing of 1 PSS Officer and SDB team leader, conducted one on one assessments of all the 800 volunteers nationally. The assessment included overall questions on mental health, challenges and/or trauma faced and their respective coping mechanisms. The assessors were also trained to watch for indicators that suggested which SDB volunteer may need further follow up PSS support and longer term support and/or referrals for counselling therapy and treatment.
- The Assessment itself was regarded as a form of intervention to offer support and comfort to each volunteer individually while providing them an arena to voice their concerns and struggles. The results of these assessments are currently being analysed to provide a better understanding and insight into the psychological state of the 800 volunteers, to inform the design and provision of individual and community based psychosocial interventions to aid in the reintegration and mental health of the volunteers.
- During the PSS assessments, the teams took the opportunity to begin sensitization of the upcoming reskilling and reintegration component of the project. Communication materials had been developed to provide clear information on the reskilling options available, in addition to providing details on the content and relevance of each option. This helped to manage expectations as well as helping each volunteer to decide which was the appropriate reskilling option for them.

B. Psychosocial Support

Highlights

- PSS to staff and volunteers is ongoing.

C. Surveillance and Contact Tracing

Highlights

- Weekly reporting on suspected Ebola cases and death notification is ongoing from community based volunteers and their supervisors.
- Numbers of reports received has increased over the last weeks, especially for sick cases. The volunteers are becoming more and more engaged in their communities and are referring and reporting for more diseases than EVD.
- The volunteers have also been actively involved in detecting measles cases and involved in the vaccination campaign for the measles outbreak in Port Loko.
- Weekly meetings are conducted at branch level with BHO and supervisors. Supervisors are also holding regular weekly meetings with their volunteers.
- Raingear was also distributed to all volunteers during this reporting period.
- Volunteers have been active in response to the Measles outbreak through identifying cases, reporting, sensitizing and providing support in vaccination campaign.

D. Case Management in Red Cross Ebola Treatment Centres - Kenema and Kono

Kenema suffered significantly during the Ebola outbreak. Kenema district is in the Eastern Province of Sierra Leone, the capital and the largest city is Kenema, which is the third largest city in Sierra Leone.

Highlights

- The ETC in Kono was officially closed on 27 November 2015. This marked the end of the 11-month long operation during which 424 patients were admitted, 250 of them discharged and 69 deaths recorded. The operation that was mainly supported by the IFRC had benefitted from an in-kind support in human and material resources from the Finish RC, Norwegian RC, Spanish RC, British RC, Australian RC, New Zealand, Swiss RC and German RC, among others.
- The construction of the triage centre in the Kenema Government hospital is finished. The centre will be handed over to the district health management team soon after the arrival in-country of the equipment that will be used for its functioning. The construction of the fence around the Kenema ETC has been completed, and so has the paving in between tombs. The monument has been erected on the memorial site and the compacting of open spaces is underway.
- The de-contamination of the ETC has been done and the de-commissioning was scheduled to begin on 10 December 2015. The school that was hosting the ETC is currently under renovation in readiness for its handover to the owner.

E. Safe and Dignified Burials and Disinfections

Highlights

- After the declaration by WHO on 7 November, SDBs are no longer mandatory within the transition plan with a much reduced number of teams on stand-by to deal with suspicious deaths as set out in a new case definition.
- As a result, Red Cross and other agencies including the MoHS have dramatically reduced the number of SDB teams from 143 to 28. None of the remaining teams are managed by the Red Cross.

Capacity building of the National Societies

The capacity building support provided by the Federation Secretariat to the Red Cross Red Crescent organizations in the countries affected by the EVD will help them become better-functioning organizations and able to better respond to the needs of the most vulnerable.

In connection with this, IFRC has revised its Ebola emergency appeals in Guinea, Liberia and Sierra Leone to include early recovery activities, while continuing to focus on stopping the epidemic. The ultimate goal is to re-establish the conditions for a quick return to a healthy society, with viable livelihoods, psychosocial well-being, economic growth, and overall human development that can foster a more inclusive society in the future. The immediate priority is to end the epidemic, and address the adverse conditions that enabled a localized epidemic to escalate into a national crisis with regional and global ramifications.

Regional Coordination and Preparedness

The goals of the EVD surveillance during Phase 3 of the Ebola response are to promptly detect new, suspected EVD cases and deaths so as to prompt appropriate response, including rapid diagnosis, case isolation and management, contact tracing, safe burials, and the identification of transmission chains.

To this end, a lessons learned workshop titled 'The Ebola Outbreak: Experiences, Challenges and Lessons Learned for better Perspectives', was held by the Ebola Regional Operations team to monitor and continuously improve the EVD Operations going forward. The aim of the workshop was to evaluate the project and provide information for the future implementation of the project in 2016. In attendance were the National Society representatives of the hardest hit countries in West Africa (Liberia, Guinea, and Sierra Leone) as well as the IFRC staff. Findings and recommendations from this workshop will be used to report

back to project stakeholders and inform future project design and implementation to increase the likelihood of success. The following sessions were conducted during the lessons learned workshop: IFRC's response system and whether it was adapted to the Ebola epidemic? The Ebola Management Structures and their effectiveness, Operational impact and whether IFRC did the job expected of them. Finally, a wrap up session was held to analyse what we can learn as the Red Cross Movement from the complex Ebola humanitarian crisis.

Risk Assessment

The EVD incidence in these three most affected countries has dropped from a peak of 950 cases per week during September 2014 to less than 10 cases per week from August 2015 onwards. The risks presented by EVD are falling but not unimportant, and changing in character. The continuing transmission of infection in Guinea and Sierra Leone into September 2015, plus the suspected re-emergence of infection resulting from exposure to survivor body fluids in Guinea, Liberia and Sierra Leone, highlight the importance of maintaining surveillance across all three countries. While the risk of re-emergence from survivors is not quantifiable, it is likely relatively low and does decline over time.

Phase 3 of the Ebola response builds upon capacity and knowledge gained during earlier phases, and has 2 objectives: First, to accurately define and rapidly interrupt all remaining chains of Ebola transmission, and secondly, to identify, manage and respond to the consequences of residual Ebola risks.

Movement Coordination

Bilateral Contributions

A number of Partner National Societies have provided bilateral support to the affected countries, as well as preparedness activities in surrounding countries, including:

Partner National Societies' bilateral contributions in West Africa			
Guinea	Liberia	Sierra Leone	Surrounding countries
French Red Cross	Austrian Red Cross	Austrian Red Cross	Belgian Red Cross
Belgian Red Cross	American Red Cross	Belgian Red Cross	British Red Cross
Botswana Red Cross	Botswana Red Cross	Botswana Red Cross	Canadian Red Cross
Canadian Red Cross	Canadian Red Cross	Canadian Red Cross	Danish Red Cross
Danish Red Cross	Danish Red Cross	Finnish Red Cross	French Red Cross
Spanish Red Cross	German Red Cross	Iranian Red Cross	Iranian Red Cross
	Spanish Red Cross	Norwegian Red Cross	Netherlands Red Cross
		Spanish Red Cross	Spanish Red Cross
			Swiss Red Cross

Funding

On behalf of the National Societies in the Ebola affected countries, the IFRC Secretariat would like to thank the following for all their contributions to the Ebola Emergency Appeals: American Red Cross and US government, Andorran Red Cross, Australian Red Cross and Australian government, Austrian Red Cross and Austrian government, Belgian government, British Red Cross and British government, Canadian Red Cross and Canadian government, Red Cross Society of China Hong Kong branch, Czech government, Danish Red Cross and Danish government, European Commission – DG ECHO, Finnish Red Cross and Finnish government, French Red Cross, German Red Cross, Icelandic Red Cross and Icelandic government, Red Crescent Society of the Islamic Republic of Iran, Irish Red Cross, Italian government, Japanese Red Cross and Japanese government, Kenyan Red Cross, Korean Red Cross, Monaco Red Cross and Monaco government, Netherlands Red Cross and Netherlands government, Norwegian Red

Cross, Philippine Red Cross, Portuguese Red Cross, Qatar Red Crescent, Spanish Red Cross and Spanish government, Swedish Red Cross and Swedish government, Swiss Red Cross and Swiss government, Taiwan Red Cross Organization, UNICEF, and the International Committee of Red Cross (ICRC). In addition, the IFRC Secretariat would like to thank the following foundations and corporate partners for their contributions: Bill and Melinda Gates Foundation, Airbus, International Federation of Freight Forwarders Association, KPMG, Nestle, Nethope Inc., Shell, Sime Darby Berhad, Tullow Guinea Limited and World Cocoa Foundation.

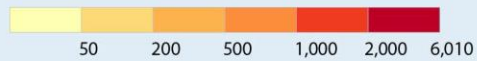
West Africa Ebola Outbreak

Cumulative Cases

10 December 2015



Total Cases (as of 10 December 2015)



Country	Cases	Deaths	TOTAL
Guinea	3,804	2,536	Cases 28,284
Liberia	10,517	4,660	Deaths 11,150
Sierra Leone	13,963	3,954	

Map distribution date: 14 December 2015

New cases and deaths include "Probable/Suspected" and "Confirmed"

Sources: GADM, Natural Earth, STEWARD Project, Africa Albers Equal Area Conic Projection, WGS 1984; Guinea - Organisation mondiale de la Sante; Liberia - Ministry of Health and Social Welfare; Sierra Leone - Ministry of Health and Sanitation

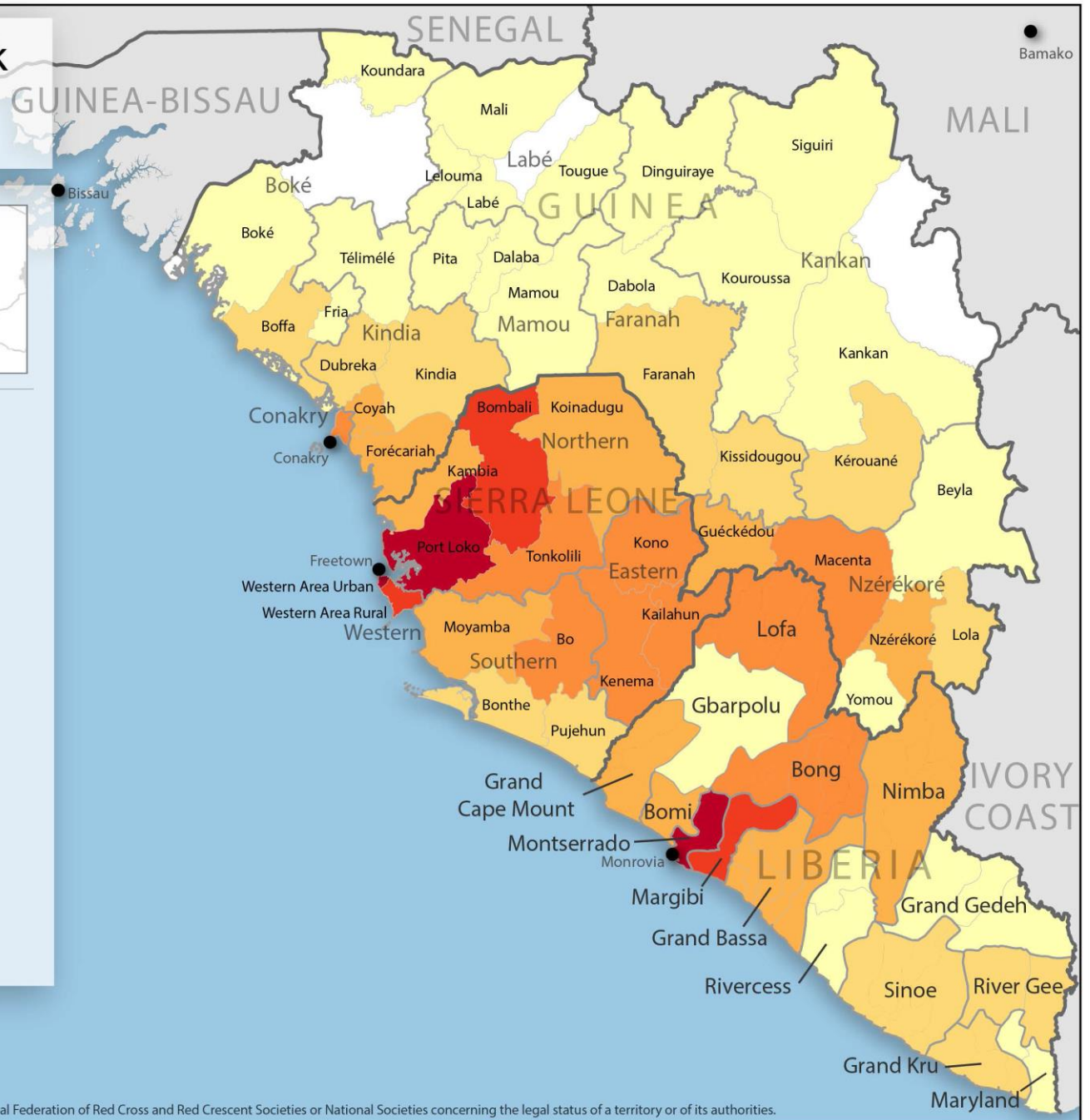
Information is subject to revision as more data becomes available.

GLIDE #: EP-2014-000039-GIN/LBR/SLE



International Federation of Red Cross and Red Crescent Societies

Produced by SIMS, Supported by the American Red Cross and the British Red Cross



The maps used do not imply the expression of any opinion on the part of the International Federation of Red Cross and Red Crescent Societies or National Societies concerning the legal status of a territory or of its authorities.

West Africa Ebola Outbreak New Confirmed Cases 10 December 2015



New Confirmed Cases: 19 November - 10 December 2015



No confirmed cases in previous 21 days

Country	New Confirmed Cases	New Deaths	TOTAL
Guinea	0	0	New Confirmed Cases 0
Liberia	0	1	New Deaths 1
Sierra Leone	0	0	

New cases include "Confirmed" Cases only. New deaths include "Confirmed", "Probable/Suspected" results.

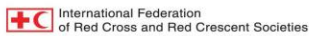
Sources: GADM, Natural Earth, STEWARD Project, Africa Albers Equal Area Conic Projection, WGS 1984; Guinea - Organisation mondiale de la Santé; Liberia - Ministry of Health and Social Welfare; Sierra Leone - Ministry of Health and Sanitation

Information is subject to revision as more data becomes available. All changes in new cases need to be carefully assessed against the context on the ground. Large changes in the number of new cases can occur for a number of reasons apart from increased or diminished caseload.

GLIDE #: EP-2014-000039-GIN/LBR/SLE



FOR INTERNAL OPERATIONS ONLY



Produced by SIMS, Supported by the American Red Cross and the British Red Cross



The maps used do not imply the expression of any opinion on the part of the International Federation of Red Cross and Red Crescent Societies or National Societies concerning the legal status of a territory or of its authorities.

Contact Information

For further information please contact:

IFRC Africa Region:

- Alasan Senghore, Regional Director, Nairobi; Tel : +254 (0) 20 2835000; Email: alasan.senghore@ifrc.org
- Farid Abdulkadir, Head of Disaster Management Unit, Nairobi, Kenya; phone +254 731 067 489; email: farid.aiywar@ifrc.org
- Rishi Ramrakha, Head of Region Logistics Unit; Tel: +254 (0) 733 888 022/ Fax +254 20 271 2777; Email: rishi.ramrakha@ifrc.org

IFRC Sahel Regional Office:

- Norbert Allale, Head of Ebola Regional Operations; Mob +221 (0) 777 406 205; Tel: +221 33 869 36 40; Dir: +221 33 869 39 17; Email: norbert.allale@ifrc.org

IFRC Guinea:

- Aliou Boly, Country Representative, Conakry. Tel: +224 (0) 621 880 995; Email: Aliou.boly@ifrc.org
- Oscar Llorente, Ebola Operation Manager, Conakry; Tel: +224 (0) 623 629 430; Email: Oscar.llorente@ifrc.org

IFRC Liberia:

- Youcef Ait Chellouche, Acting IFRC manager, Liberia, Direct Tel Line: +221 338 693 656, Mobile: +221 786 370 780; Email: Youcef.Aitchellouche@ifrc.org
- Ademola Alao, Ebola Operation Manager, Monrovia, Tel: +231 (0) 775773562; Email: ademola.alao@ifrc.org

IFRC Sierra Leone:

- Moulaye Camara, Country Representative, Freetown; Tel: +232 (0) 792 367 95; Email: moulaye.camara@ifrc.org
- Andrew Jarjou, Ebola Operations Manager, Freetown. Tel: +232 (0) 767 381 16; Email: Andrew.jarjou@ifrc.org
- **IFRC Geneva:** Cristina Estrada, Senior Officer Operations Quality Assurance; Tel: +41.22.730.4260; Email: cristina.estrada@ifrc.org

For Resource Mobilization and Pledges:

- **IFRC Ghana:** Terry Carney, Ebola Resource Mobilization Coordinator; Tel: +233 (0) 266 444 147; Email: terry.carney@ifrc.org.
- Please send all pledges for funding to zonerm.africa@ifrc.org

For Performance and Accountability (planning, monitoring, evaluation and reporting):

- **IFRC Africa Region:** Alote B. Ewinyu Gitonga, Senior Officer, Planning, Monitoring, Evaluation and Reporting (PMER) – Ebola Response; Tel. +254 731 688 610; Email: Alote.Ewinyugitonga@ifrc.org
- **IFRC West Coast:** Terrie Takavarasha; PMER/RM Coordinator; Tel: +22506137259; Email: terrie.takavarasha@ifrc.org

How we work

All IFRC assistance seeks to adhere to the Code of Conduct for the International Red Cross and Red Crescent Movement and Non-Governmental Organizations (NGOs) in Disaster Relief and the Humanitarian Charter and Minimum Standards in Disaster Response (Sphere) in delivering assistance to the most vulnerable.

The IFRC's vision is to inspire, encourage, facilitate and promote at all times all forms of humanitarian activities by National Societies, with a view to preventing and alleviating human suffering, and thereby contributing to the maintenance and promotion of human dignity and peace in the world.

www.ifrc.org
Saving lives, changing minds.



The IFRC's work is guided by Strategy 2020 which puts forward three strategic aims:

1. Save lives, protect livelihoods, and strengthen recovery from disaster and crises.
2. Enable healthy and safe living.
3. Promote social inclusion and a culture of non-violence and peace.

EBOLA 2014

Refreshed on 13-Oct-2014 at

09:40

At a glance

EMERGENCY APPEALS

Appeal Code	Appeal Name	Appeal Timeframe		Budget	Funding	Coverage	Gap	Income	DREF	Expenditure	Balance	Commitments	Exp/Bud
MDR60002	Africa - Ebola Coordination and prep	19-Aug-14	31-May-15	2,893,667	551,220	19%	2,342,446.6	551,813.4		172,020.8	379,792.6	26,245.2	6%
MDRGN007	Guinea - Ebola Virus Disease	26-Mar-14	30-Jun-15	8,752,366	3,671,032	42%	5,081,333.5	3,698,597.0	-	1,397,605.9	2,300,991.1	464,979.1	16%
MDRLR001	Liberia - EVD Outbreak	09-Apr-14	30-Jun-15	8,387,155	2,761,707	33%	5,625,448.3	2,729,730.8	-	1,129,010.8	1,600,720.0	388,284.6	13%
MDRNG017	Nigeria - Ebola Virus Disease	08-Aug-14	31-May-15	1,619,444	434,992	27%	1,184,451.8	434,992.2	-	335,199.3	99,792.9	31,683.9	21%
MDRSL005	Sierra Leone - Ebola Virus Disease	06-Apr-14	15-Jun-15	12,179,729	6,601,286	54%	5,578,442.6	6,555,621.6	1,000,000.0	1,751,757.5	5,803,864.1	4,170,747.1	14%
MDRSN010	Senegal - Ebola Virus Disease	08-Sep-14	28-Feb-15	1,380,962	0	0%	1,380,962.0	-	253,515.0	140,758.0	112,757.0		10%
TOTAL EMERGENCY APPEALS				35,213,323	14,020,238	40%	21,193,084.8	13,970,755.0	1,253,515.0	4,926,352.2	10,297,917.8	5,081,939.9	14%

DREF OPERATIONS

Appeal Code	Appeal Name	Appeal Timeframe		Budget	Funding	Coverage	Gap	Income	DREF	Expenditure	Balance	Commitments	Exp/Bud
MDRBJ014	Benin - Ebola Virus Disease	27-Aug-14	27-Nov-14	50,204	0	N/A	0	0	50,204.0	24,402.5	25,801.6		49%
MDRCF018	Central African Rep - Ebola Virus Di	29-Aug-14	29-Nov-14	48,697	0	N/A	0	0	48,697.0		48,697.0	7,050.4	
MDRCI006	Côte d'Ivoire - Ebola Preparedness	18-Apr-14	18-Jul-14	60,950	0	N/A	0	0	60,950.0	59,979.6	970.4		98%
MDRCM019	Cameroon - Ebola Virus Disease	24-Aug-14	24-Nov-14	49,922	0	N/A	0	0	49,922.0	9,333.7	40,588.3	6,276.1	19%
MDRGM009	Gambia - Ebola Virus Disease Prepare	15-Sep-14	15-Dec-14	46,856	0	N/A	0	0	46,856.0	34,409.0	12,447.0		73%
MDRGW002	Guinea Bissau - Ebola Virus Prepared	08-Oct-14	08-Jan-15	49,168	0	N/A	0	0	49,168.0		49,168.0		
MDRKE031	Kenya - Ebola Virus Disease Prepared	23-Sep-14	23-Dec-14	59,127	0	N/A	0	0	59,127.0	50,518.0	8,609.0		85%
MDRML010	Mali - Ebola Preparedness	18-Apr-14	31-Aug-14	57,715	0	N/A	0	0	57,715.0	51,239.1	6,476.0		89%
MDRSN009	Senegal - Ebola Virus Disease	11-Apr-14	24-Aug-14	54,848	0	N/A	0	0	54,848.0	53,589.7	1,258.3		98%
MDRTD013	Chad - Ebola Virus Disease Preparedn	12-Sep-14	12-Dec-14	54,766	0	N/A	0	0	54,766.0		54,766.0		
MDRTG005	Togo - Ebola Virus Disease	27-Aug-14	27-Nov-14	49,530	0	N/A	0	0	49,530.0	23,875.6	25,654.4		48%
TOTAL DREF OPERATIONS				838,182	0	N/A	0	0	581,783.0	307,347.1	274,435.9	13,326.5	48%

Donor response

Ebola Emergency Appeals Consolidation

TIMEFRAME: 2014-2015

TOTAL AMOUNT SOUGHT:	215,747,991
TOTAL RECEIVED TO DATE:	128,299,516
APPEAL COVERAGE TO DATE:	59%

	Cash contributions	Inkind Goods & Transport	Inkind Personnel	Other Income	Total
	CHF	CHF	CHF	CHF	CHF
BUDGET					215,747,991
FUNDING					
Opening Balance					
Income					
Airbus	68,480			-3,424	65,056
American Red Cross	3,479,782				3,479,782
Andorran Red Cross	6,153				6,153
Australian Government	50,441				50,441
Australian Red Cross	450,148		65,515		515,663
Austrian Red Cross (from Austrian Government)	1,165,159				1,165,159
Belgian Federal Government	2,407,190				2,407,190
Bill & Melinda Gates Foundation	2,872,958				2,872,958
British Red Cross	884,095	300	71,326		955,721
British Red Cross (from Band Aid)	143,333				143,333
British Red Cross (from British Government)	23,064,922		69,820	573	23,135,315
British Red Cross (from Children's Investment Fund Foundation)	6,723,802				6,723,802
British Red Cross (from DEC (Disasters Emergency Committee))	2,442,341				2,442,341
Canadian Red Cross	349,032		93,017		442,049
Canadian Red Cross (from Canadian Government)	4,240,997		72,294		4,313,291
ChevronTexaco Corp.	1,369			-68	1,301
China Red Cross, Hong Kong branch	72,599				72,599
Czech Government	130,033				130,033
Danish Red Cross	50,000		220,486		270,486
Danish Red Cross (from Danish Government)	77,557				77,557
DFID Partnership Allocations				-787,994	-787,994
European Commission - DG ECHO	4,871,247				4,871,247
European Commission – FPI	6,346,113				6,346,113
FIATA-Intl Fed Freight Forwarders Assoc.	42,125				42,125
Finnish Red Cross	151,303	162,531	94,281		408,115
Finnish Red Cross (from Finnish Government)	1,400,038				1,400,038
French Red Cross	14,619		12,450		27,070
French Red Cross (from Total)	359,530				359,530
Freshfields	6,750			-337	6,412
German Red Cross	21,387				21,387
Guinea - Private Donors	7,423				7,423
Icelandic Red Cross	874,155				874,155
Icelandic Red Cross (from Icelandic Government)	195,600				195,600
ICRC	10,000				10,000
Informa	2,705			-133	2,572
Irish Red Cross Society	73,152		5,035		78,188
Israel - Private Donors	9,653				9,653
Italian Government Bilateral Emergency Fund (from Italian Government)	1,203,910				1,203,910
Italian Red Cross	216,246				216,246
Japanese Government	13,817,632				13,817,632
Japanese Red Cross Society	1,152,373				1,152,373
Kenya Red Cross Society			16,467		16,467

	Cash contributions	Inkind Goods & Transport	Inkind Personnel	Other Income	Total
	CHF	CHF	CHF	CHF	CHF
BUDGET					215,747,991
FUNDING					
Opening Balance					
Income					
KPMG Disaster Relief Fund	12,184			-609	11,575
KPMG International Cooperative(KPMG-I)	128,741			-6,437	122,304
Louis Berger	368			-18	350
Luxembourg - Private Donors	2,824				2,824
Monaco Government	24,030				24,030
Nestle	44,377			-2,200	42,177
Nethope INC.	137,020				137,020
New Zealand Red Cross			46,797		46,797
Norwegian Red Cross	93,972		70,831		164,803
Olam	2,976			-149	2,827
On Line donations	88,607				88,607
On Line donations (from Albania - Private donors)	0				0
On Line donations (from Andorra - Private Donors)	2				2
On Line donations (from Antigua And Barbuda - Private donors)	0				0
On Line donations (from Argentina - Private Donors)	3				3
On Line donations (from Armenia - Private Donors)	0				0
On Line donations (from Australia - Private Donors)	947				947
On Line donations (from Austria - Private Donors)	80				80
On Line donations (from Azerbaijan Private Donors)	10				10
On Line donations (from Bahamas - Private Donors)	0				0
On Line donations (from Bahrain - Private Donors)	368				368
On Line donations (from Bangladesh - Private Donors)	1				1
On Line donations (from Barbados - Private Donors)	6				6
On Line donations (from Belarus - Private Donors)	5				5
On Line donations (from Belgium - Private Donors)	11				11
On Line donations (from Bermuda - Private Donors)	42				42
On Line donations (from Bhutan - Private donors)	0				0
On Line donations (from Bolivia Private Donors)	0				0
On Line donations (from Bosnia And Herzegovina - Private donors)	0				0
On Line donations (from Botswana - Private donors)	1				1
On Line donations (from Brazil - Private Donors)	532				532
On Line donations (from Brunei - Private Donors)	119				119
On Line donations (from Bulgaria - Private Donors)	73				73
On Line donations (from Cambodia - Private Donors)	0				0
On Line donations (from Cameroon Private donors)	0				0
On Line donations (from Canada - Private Donors)	1,124				1,124
On Line donations (from Cayman Islands - Private Donors)	0				0
On Line donations (from Chad - Private donors)	1				1
On Line donations (from Chile Private Donors)	9				9
On Line donations (from China - Private Donors)	738				738
On Line donations (from Colombia - Private Donors)	16				16
On Line donations (from Costa Rica - Private Donors)	13				13
On Line donations (from Croatia - Private Donors)	1				1
On Line donations (from Cyprus - Private Donors)	1				1
On Line donations (from Czech private donors)	32				32
On Line donations (from Denmark - Private Donors)	53				53
On Line donations (from Dominican Republic - Private Donor)	4				4
On Line donations (from Ecuador - Private Donors)	4				4

	Cash contributions	Inkind Goods & Transport	Inkind Personnel	Other Income	Total
	CHF	CHF	CHF	CHF	CHF
BUDGET					215,747,991
FUNDING					
Opening Balance					
Income					
On Line donations (from Egypt - Private Donors)	303				303
On Line donations (from Estonia - Private donors)	1				1
On Line donations (from Fiji Private Donors)	5				5
On Line donations (from Finland - Private Donors)	30				30
On Line donations (from France - Private Donors)	303				303
On Line donations (from French Guiana - Private donors)	0				0
On Line donations (from Georgia Private Donors)	7				7
On Line donations (from Germany - Private Donors)	189				189
On Line donations (from Ghana Private Donors)	0				0
On Line donations (from Great Britain - Private Donors)	4,178				4,178
On Line donations (from Greece - Private Donors)	296				296
On Line donations (from Greenland - Private donors)	1				1
On Line donations (from Guatemala Private donors)	0				0
On Line donations (from Guernsey - Private donors)	0				0
On Line donations (from Guyana Private Donors)	0				0
On Line donations (from Haiti- Private Donors)	0				0
On Line donations (from Holy See (Vatican City State) - Private donors)	0				0
On Line donations (from Hong Kong - Private Donors)	617				617
On Line donations (from Hungarian - Private Donors)	74				74
On Line donations (from icelandic RC)	6				6
On Line donations (from India - Private Donors)	288				288
On Line donations (from Indonesia - Private Donors)	87				87
On Line donations (from Iranian private donors)	0				0
On Line donations (from Ireland - Private Donors)	282				282
On Line donations (from Isle Of Man - Private donors)	0				0
On Line donations (from Israel - Private Donors)	17				17
On Line donations (from Italy - Private Donors)	92				92
On Line donations (from Japan - Private Donors)	822				822
On Line donations (from Jersey - Private donors)	0				0
On Line donations (from Jordan - Private Donors)	10				10
On Line donations (from Kazakhstan - Private Donors)	28				28
On Line donations (from Kenya - Private Donors)	41				41
On Line donations (from Kosovo - Private donors)	0				0
On Line donations (from Kuwait - Private Donors)	546				546
On Line donations (from Latvia - Private Donors)	8				8
On Line donations (from Lebanese - Private Donors)	42				42
On Line donations (from Lithuania- Private Donors)	2				2
On Line donations (from Luxembourg - Private Donors)	4				4
On Line donations (from Macao - Private donors)	37				37
On Line donations (from Malaysia - Private Donors)	427				427
On Line donations (from Maldives Private Donors)	1				1
On Line donations (from Malta - Private Donors)	4				4
On Line donations (from Mauritius Private Donors)	23				23
On Line donations (from Mexico - Private Donors)	60				60
On Line donations (from Moldova, Republic Of - Private donors)	1				1
On Line donations (from Mongolia - Private Donors)	0				0
On Line donations (from Morocco Private Donors)	0				0

	Cash contributions	Inkind Goods & Transport	Inkind Personnel	Other Income	Total
	CHF	CHF	CHF	CHF	CHF
BUDGET					215,747,991
FUNDING					
Opening Balance					
Income					
On Line donations (from Myanmar - Private Donors)	3				3
On Line donations (from Namibia - Private Donors)	3				3
On Line donations (from Nepal Private Donors)	2				2
On Line donations (from Netherlands Antilles - Private donors)	0				0
On Line donations (from Netherlands - Private Donors)	96				96
On Line donations (from New Zealand - Private Donors)	188				188
On Line donations (from Nicaragua Private Donors)	0				0
On Line donations (from Nigeria private donors)	7				7
On Line donations (from Northern Mariana Islands - Private donors)	0				0
On Line donations (from Norway - Private Donors)	304				304
On Line donations (from Oman - Private Donors)	290				290
On Line donations (from Pakistan Private Donors)	58				58
On Line donations (from Panama Private donors)	106				106
On Line donations (from Peru - Private Donors)	5				5
On Line donations (from Philippines - Private Donors)	70				70
On Line donations (from Poland - Private Donors)	78				78
On Line donations (from Portuguese - Private Donors)	82				82
On Line donations (from Puerto Rico - Private donors)	10				10
On Line donations (from Qatar Private Donors)	516				516
On Line donations (from Republic of Korea - Private Donors)	213				213
On Line donations (from Romania Private Donors)	21				21
On Line donations (from Russia - Private Donors)	129				129
On Line donations (from Saint Helena - Private donors)	0				0
On Line donations (from Salvador - Private Donors)	0				0
On Line donations (from Saudi Arabia - Private Donors)	387				387
On Line donations (from Serbia - Private Donors)	1				1
On Line donations (from Sierra Leone - Private Donors)	60				60
On Line donations (from Singapore - Private Donors)	1,148				1,148
On Line donations (from Slovakia Private Donors)	10				10
On Line donations (from Slovenia - Private Donors)	4				4
On Line donations (from South Africa - Private Donors)	59				59
On Line donations (from Spain - Private Donors)	372				372
On Line donations (from Sri Lanka - Private Donors)	70				70
On Line donations (from St Kitts and Nevis Private donor)	0				0
On Line donations (from Swedish - Private Donors)	414				414
On Line donations (from Switzerland - Private Donors)	902				902
On Line donations (from Syria Private Donors)	1				1
On Line donations (from Taiwan - Private Donors)	556				556
On Line donations (from Tajikistan - Private Donors)	1				1
On Line donations (from Tanzania - Private Donors)	0				0
On Line donations (from Thailand - Private Donors)	210				210
On Line donations (from Trinidad & Tobago - Private Donors)	101				101
On Line donations (from Tunis Private Donors)	0				0
On Line donations (from Turkey - Private Donors)	52				52
On Line donations (from Uganda - Private Donors)	0				0
On Line donations (from Ukraine private donors)	21				21
On Line donations (from Unidentified donor)	5				5
On Line donations (from United Arab Emirates - Private Donors)	1,430				1,430

	Cash contributions	Inkind Goods & Transport	Inkind Personnel	Other Income	Total
	CHF	CHF	CHF	CHF	CHF
BUDGET					215,747,991
FUNDING					
Opening Balance					
Income					
On Line donations (from United States - Private Donors)	21,369				21,369
On Line donations (from Uruguay - Private Donors)	1				1
On Line donations (from Venezuela - Private Donors)	1				1
On Line donations (from Vietnam - Private Donors)	21				21
On Line donations (from Virgin Islands, U.S. - Private donors)	0				0
On Line donations (from Zimbabwe - Private Donors)	1				1
Philippine Red Cross	24,110				24,110
Philips Foundation	4,660			-215	4,446
Portuguese Red Cross	1,804				1,804
Qatar Red Crescent Society	9,501				9,501
Red Crescent Society of Islamic Republic of Iran	35,000				35,000
Red Cross of Monaco	109,842				109,842
Services Fees				10,870	10,870
Shell	61,599			-3,080	58,519
Sime Darby Berhad	142,227			-7,117	135,110
Spanish Government	6,239,698				6,239,698
Spanish Red Cross	284,955	4,050	7,924		296,929
Sundry Income				8,032	8,032
Swedish Red Cross	3,151,103				3,151,103
Swiss Red Cross	327,650	127,872	56,106		511,628
Swiss Red Cross (from Swiss Government)	3,500,000				3,500,000
Switzerland - Private Donors	1,407				1,407
Taiwan Red Cross Organisation	26,415				26,415
The Netherlands Red Cross	2,117,038	204,407			2,321,445
The Netherlands Red Cross (from Netherlands Government)	3,860,836				3,860,836
The Netherlands Red Cross (from Netherlands Red Cross Silent Emergency Fund)	100,715				100,715
The Republic of Korea National Red Cross	60,000				60,000
The Thai Red Cross Society (from Taiwan Red Cross Organisation)	199,676				199,676
Toyota Motor Corp.	19,102			-955	18,147
Tullow Guinea Limited	181,376			-9,069	172,307
UNDP - United Nations Development Programme	5,912,714				5,912,714
UNICEF - United Nations Children's Fund	643,279	541,093			1,184,372
Unidentified donor	1,884				1,884
United States Government - USAID	19,475,132		287,647	26,251	19,789,029
World Cocoa Foundation	319,761				319,761
Total Income	126,845,346	1,040,253	1,189,995	-776,079	128,299,516
TOTAL FUNDING					128,299,516
COVERAGE					59%

ADDITIONAL CONTRIBUTIONS TO THE OPERATION (based on information Logistics received from partners)

Total

CHF

Bilateral Contributions

American Red Cross	38,148
British Red Cross	3,123
Canadian Red Cross	660,710
Danish Red Cross	25,089
Finnish Red Cross	155,627
French Red Cross	20,000
German Red Cross	845,560
Norwegian Red Cross	488,004
Spanish Red Cross	563,590
Swiss Red Cross	39,500
Total Bilateral Contributions	2,839,350

Donor response

Ebola Emergency Appeals Consolidation, by Appeal

TIMEFRAME: 2014-2015

Refreshed on 15-Dec-2015 at 09:07

TOTAL AMOUNT SOUGHT	215,747,991
TOTAL RECEIVED TO DATE	128,299,516
APPEAL COVERAGE TO DATE	59%

	MDR60002	MDRGN007	MDRLR001	MDRNG017	MDRSL005	MDRSN010	Total
	Africa	Guinea	Liberia	Nigeria	Sierra Leone	Senegal	CHF
BUDGET	15,882,441	56,016,354	46,253,362	1,619,444	94,595,428	1,380,962	215,747,991
FUNDING							
<u>Opening Balance</u>							
Income							
Airbus		65,740	2,740				68,480
American Red Cross	318,292	1,400,883	451,884		1,308,722		3,479,782
Andorran Red Cross	6,153						6,153
Australian Government				50,441			50,441
Australian Red Cross	87,106	68,649	81,647		212,746		450,148
Austrian Red Cross (from Austrian Government)		582,579	582,579				1,165,159
Belgian Federal Government			2,407,190				2,407,190
Bill & Melinda Gates Foundation		909,770	909,770		1,053,418		2,872,958
British Red Cross	174,210	41,739	130,324		462,509	75,314	884,095
British Red Cross (from Band Aid)		143,333					143,333
British Red Cross (from British Government)			298,311		22,766,611		23,064,922
British Red Cross (from Children's Investment Fund Foundation)		2,582,799	2,375,870		1,765,133		6,723,802
British Red Cross (from DEC (Disasters Emergency Committee))		1,001,458	170,484		1,270,399		2,442,341
Canadian Red Cross	83,983				265,049		349,032
Canadian Red Cross (from Canadian Government)	487,556	1,803,130	921,678	58,969	923,414	46,250	4,240,997
ChevronTexaco Corp.			1,369				1,369
China Red Cross, Hong Kong branch			72,599				72,599
Czech Government					130,033		130,033
Danish Red Cross	50,000						50,000
Danish Red Cross (from Danish Government)		77,557					77,557
European Commission - DG ECHO	780,910	1,812,100	1,169,376	114,679	994,182		4,871,247
European Commission - FPI	6,346,113						6,346,113
FIATA-Intl Fed Freight Forwarders Assoc.		29,541			12,584		42,125
Finnish Red Cross		73,261	53,637		24,406		151,303

	MDR60002	MDRGN007	MDRLR001	MDRNG017	MDRSL005	MDRSN010	Total
	Africa	Guinea	Liberia	Nigeria	Sierra Leone	Senegal	CHF
BUDGET	15,882,441	56,016,354	46,253,362	1,619,444	94,595,428	1,380,962	215,747,991
FUNDING							
Opening Balance							
Income							
Finnish Red Cross (from Finnish Government)	209,072	633,513	290,516		266,936		1,400,038
French Red Cross		14,835	-304		88		14,619
French Red Cross (from Total)			179,962		179,569		359,530
Freshfields		3,600	3,150				6,750
German Red Cross	21,387						21,387
Guinea - Private Donors		7,423					7,423
Icelandic Red Cross	160,000				714,155		874,155
Icelandic Red Cross (from Icelandic Government)					195,600		195,600
ICRC	10,000						10,000
Infoma	48		2,657				2,705
Irish Red Cross Society	73,152						73,152
Israel - Private Donors	9,653						9,653
Italian Government Bilateral Emergency Fund (from Italian Government)					1,203,910		1,203,910
Italian Red Cross	216,246						216,246
Japanese Government	671,526	7,763,539	3,971,822		1,410,745		13,817,632
Japanese Red Cross Society	87,579	303,350	303,232	53,400	359,212	45,600	1,152,373
KPMG Disaster Relief Fund		4,994	2,196		4,994		12,184
KPMG International Cooperative(KPMG-I)	20,120	43,924	32,349		32,348		128,741
Louis Berger		336	31				368
Luxembourg - Private Donors	2,824						2,824
Monaco Government	24,030						24,030
Nestle	376	42,077	1,924				44,377
Nethope INC.		45,673	45,673		45,673		137,020
Norwegian Red Cross			51,244		42,728		93,972
Olam		587	2,389				2,976
On Line donations	88,607						88,607
On Line donations (from Albania - Private donors)					0		0
On Line donations (from Andorra - Private Donors)		1	1				2
On Line donations (from Antigua And Barbuda - Private donors)		0					0
On Line donations (from Argentina - Private Donors)		0	0		2		3

	MDR60002	MDRGN007	MDRLR001	MDRNG017	MDRSL005	MDRSN010	Total
	Africa	Guinea	Liberia	Nigeria	Sierra Leone	Senegal	CHF
BUDGET	15,882,441	56,016,354	46,253,362	1,619,444	94,595,428	1,380,962	215,747,991
FUNDING							
Opening Balance							
Income							
On Line donations (from Armenia - Private Donors)		0					0
On Line donations (from Australia - Private Donors)	21	369	387		170		947
On Line donations (from Austria - Private Donors)		6	43		31		80
On Line donations (from Azerbaijan Private Donors)		0	6		5		10
On Line donations (from Bahamas - Private Donors)		0					0
On Line donations (from Bahrain - Private Donors)		115	138		115		368
On Line donations (from Bangladesh - Private Donors)		0	0		0		1
On Line donations (from Barbados - Private Donors)	2	2	1		1		6
On Line donations (from Belarus - Private Donors)			2		3		5
On Line donations (from Belgium - Private Donors)		6	5		0		11
On Line donations (from Bermuda - Private Donors)		0			42		42
On Line donations (from Bhutan - Private donors)		0					0
On Line donations (from Bolivia Private Donors)			0		0		0
On Line donations (from Bosnia And Herzegovina - Private donors)		0			0		0
On Line donations (from Botswana - Private donors)	1		0		0		1
On Line donations (from Brazil - Private Donors)	16	51	245		220		532
On Line donations (from Brunei - Private Donors)	117	0			2		119
On Line donations (from Bulgaria - Private Donors)		17	30		27		73
On Line donations (from Cambodia - Private Donors)		0	0				0
On Line donations (from Cameroon Private donors)					0		0
On Line donations (from Canada - Private Donors)	3	450	488		183		1,124
On Line donations (from Cayman Islands - Private Donors)		0	0		0		0
On Line donations (from Chad - Private donors)					1		1
On Line donations (from Chile Private Donors)		0	0		9		9
On Line donations (from China - Private Donors)	10	362	300		65		738
On Line donations (from Colombia - Private Donors)		2	3		11		16
On Line donations (from Costa Rica - Private Donors)		1	5		8		13
On Line donations (from Croatia - Private Donors)		0	0		0		1
On Line donations (from Cyprus - Private Donors)		0	0		1		1
On Line donations (from Czech private donors)	1	7	11		14		32

	MDR60002	MDRGN007	MDRLR001	MDRNG017	MDRSL005	MDRSN010	Total
	Africa	Guinea	Liberia	Nigeria	Sierra Leone	Senegal	CHF
BUDGET	15,882,441	56,016,354	46,253,362	1,619,444	94,595,428	1,380,962	215,747,991
FUNDING							
Opening Balance							
Income							
On Line donations (from Denmark - Private Donors)	6	26	19		2		53
On Line donations (from Dominican Republic - Private Donor)		1	1		1		4
On Line donations (from Ecuador - Private Donors)	3	0			1		4
On Line donations (from Egypt - Private Donors)		93	115		94		303
On Line donations (from Estonia - Private donors)		0	0		0		1
On Line donations (from Fiji Private Donors)	0	1	2		1		5
On Line donations (from Finland - Private Donors)	0	14	14		2		30
On Line donations (from France - Private Donors)		145	124		35		303
On Line donations (from French Guiana - Private donors)		0					0
On Line donations (from Georgia Private Donors)			4		4		7
On Line donations (from Germany - Private Donors)	4	87	65		33		189
On Line donations (from Ghana Private Donors)	0						0
On Line donations (from Great Britain - Private Donors)	77	2,065	1,684		352		4,178
On Line donations (from Greece - Private Donors)		67	132		97		296
On Line donations (from Greenland - Private donors)		0	1		0		1
On Line donations (from Guatemala Private donors)		0	0				0
On Line donations (from Guernsey - Private donors)		0			0		0
On Line donations (from Guyana Private Donors)					0		0
On Line donations (from Haiti- Private Donors)		0					0
On Line donations (from Holy See (Vatican City State) - Private donors)					0		0
On Line donations (from Hong Kong - Private Donors)	3	39	289		285		617
On Line donations (from Hungarian - Private Donors)	1	3	36		34		74
On Line donations (from icelandic RC)		2	3		2		6
On Line donations (from India - Private Donors)	65	26	56		141		288
On Line donations (from Indonesia - Private Donors)		5	46		36		87
On Line donations (from Iranian private donors)		0	0		0		0
On Line donations (from Ireland - Private Donors)	7	111	117		47		282
On Line donations (from Isle Of Man - Private donors)					0		0
On Line donations (from Israel - Private Donors)	0	0	8		9		17
On Line donations (from Italy - Private Donors)	1	2	51		39		92

	MDR60002	MDRGN007	MDRLR001	MDRNG017	MDRSL005	MDRSN010	Total
	Africa	Guinea	Liberia	Nigeria	Sierra Leone	Senegal	CHF
BUDGET	15,882,441	56,016,354	46,253,362	1,619,444	94,595,428	1,380,962	215,747,991
FUNDING							
Opening Balance							
Income							
On Line donations (from Japan - Private Donors)	6	41	441		334		822
On Line donations (from Jersey - Private donors)					0		0
On Line donations (from Jordan - Private Donors)		3	4		3		10
On Line donations (from Kazakhstan - Private Donors)	21	2	3		2		28
On Line donations (from Kenya - Private Donors)	0	25	16		0		41
On Line donations (from Kosovo - Private donors)			0				0
On Line donations (from Kuwait - Private Donors)	29	167	230		121		546
On Line donations (from Latvia - Private Donors)		1	3		3		8
On Line donations (from Lebanese - Private Donors)		0	24		19		42
On Line donations (from Lithuania- Private Donors)		1	1		1		2
On Line donations (from Luxembourg - Private Donors)	1	0	1		1		4
On Line donations (from Macao - Private donors)			20		17		37
On Line donations (from Malaysia - Private Donors)	185	57	88		97		427
On Line donations (from Maldives Private Donors)			1		0		1
On Line donations (from Malta - Private Donors)	0	1	1		2		4
On Line donations (from Mauritius Private Donors)		13	9		0		23
On Line donations (from Mexico - Private Donors)		3	32		25		60
On Line donations (from Moldova, Republic Of - Private donors)			0		1		1
On Line donations (from Mongolia - Private Donors)			0				0
On Line donations (from Morocco Private Donors)			0				0
On Line donations (from Myanmar - Private Donors)	3	0	1				3
On Line donations (from Namibia - Private Donors)			1		1		3
On Line donations (from Nepal Private Donors)		0	1		1		2
On Line donations (from Netherlands Antilles - Private donors)		0					0
On Line donations (from Netherlands - Private Donors)		43	39		14		96
On Line donations (from New Zealand - Private Donors)	1	33	94		61		188
On Line donations (from Nicaragua Private Donors)					0		0
On Line donations (from Nigeria private donors)		3	3		2		7
On Line donations (from Northern Mariana Islands - Private donors)		0					0
On Line donations (from Norway - Private Donors)	7	13	156		128		304

	MDR60002	MDRGN007	MDRLR001	MDRNG017	MDRSL005	MDRSN010	Total
	Africa	Guinea	Liberia	Nigeria	Sierra Leone	Senegal	CHF
BUDGET	15,882,441	56,016,354	46,253,362	1,619,444	94,595,428	1,380,962	215,747,991
FUNDING							
Opening Balance							
Income							
On Line donations (from Oman - Private Donors)		144	113		33		290
On Line donations (from Pakistan Private Donors)	35	12	10		1		58
On Line donations (from Panama Private donors)	86	2	9		10		106
On Line donations (from Peru - Private Donors)		0	0		4		5
On Line donations (from Philippines - Private Donors)	1	1	39		29		70
On Line donations (from Poland - Private Donors)	30	5	19		24		78
On Line donations (from Portuguese - Private Donors)		3	44		35		82
On Line donations (from Puerto Rico - Private donors)	0	1	5		4		10
On Line donations (from Qatar Private Donors)	3	162	190		161		516
On Line donations (from Republic of Korea - Private Donors)	0	5	115		94		213
On Line donations (from Romania Private Donors)	11	1	1		8		21
On Line donations (from Russia - Private Donors)	4	29	58		38		129
On Line donations (from Saint Helena - Private donors)					0		0
On Line donations (from Salvador - Private Donors)			0		0		0
On Line donations (from Saudi Arabia - Private Donors)	1	41	181		164		387
On Line donations (from Serbia - Private Donors)		0			1		1
On Line donations (from Sierra Leone - Private Donors)			33		27		60
On Line donations (from Singapore - Private Donors)	122	141	477		408		1,148
On Line donations (from Slovakia Private Donors)	0	5	4		1		10
On Line donations (from Slovenia - Private Donors)		1	1		1		4
On Line donations (from South Africa - Private Donors)	1	9	23		26		59
On Line donations (from Spain - Private Donors)	0	89	178		106		372
On Line donations (from Sri Lanka - Private Donors)	1	1	34		33		70
On Line donations (from St Kits and Nevis Private donor)	0	0					0
On Line donations (from Swedish - Private Donors)	4	70	203		137		414
On Line donations (from Switzerland - Private Donors)	26	493	345		38		902
On Line donations (from Syria Private Donors)					1		1
On Line donations (from Taiwan - Private Donors)	25	120	263		148		556
On Line donations (from Tajikistan - Private Donors)		0	1				1
On Line donations (from Tanzania - Private Donors)		0			0		0

	MDR60002	MDRGN007	MDRLR001	MDRNG017	MDRSL005	MDRSN010	Total
	Africa	Guinea	Liberia	Nigeria	Sierra Leone	Senegal	CHF
BUDGET	15,882,441	56,016,354	46,253,362	1,619,444	94,595,428	1,380,962	215,747,991
FUNDING							
Opening Balance							
Income							
On Line donations (from Thailand - Private Donors)	18	29	72		90		210
On Line donations (from Trinidad & Tobago - Private Donors)	89	1	2		10		101
On Line donations (from Tunis Private Donors)			0				0
On Line donations (from Turkey - Private Donors)	0	13	22		16		52
On Line donations (from Uganda - Private Donors)		0			0		0
On Line donations (from Ukraine private donors)	1	3	10		8		21
On Line donations (from Unidentified donor)		1	1		2		5
On Line donations (from United Arab Emirates - Private Donors)	233	265	470		462		1,430
On Line donations (from United States - Private Donors)	2,685	6,205	7,853		4,627		21,369
On Line donations (from Uruguay - Private Donors)		0	0		1		1
On Line donations (from Venezuela - Private Donors)		0	0		0		1
On Line donations (from Vietnam - Private Donors)		5	5		11		21
On Line donations (from Virgin Islands, U.S. - Private donors)					0		0
On Line donations (from Zimbabwe - Private Donors)		1					1
Philippine Red Cross	24,110						24,110
Philips Foundation	367	4,293					4,660
Portuguese Red Cross		1,804					1,804
Qatar Red Crescent Society	9,501						9,501
Red Crescent Society of Islamic Republic of Iran		25,000			10,000		35,000
Red Cross of Monaco	28,191	18,213	12,142	18,096	18,097	15,102	109,842
Shell				61,599			61,599
Sime Darby Berhad			142,227				142,227
Spanish Government	753,067		1,613,715		3,872,916		6,239,698
Spanish Red Cross					284,955		284,955
Swedish Red Cross		1,021,899	1,298,842		830,362		3,151,103
Swiss Red Cross	19,245				308,405		327,650
Swiss Red Cross (from Swiss Government)		800,000	1,000,000		1,700,000		3,500,000
Switzerland - Private Donors	1,407						1,407
Taiwan Red Cross Organisation		26,415					26,415
The Netherlands Red Cross	130,370	1,328,161	584,178		74,329		2,117,038

	MDR60002	MDRGN007	MDRLR001	MDRNG017	MDRSL005	MDRSN010	Total
	Africa	Guinea	Liberia	Nigeria	Sierra Leone	Senegal	CHF
BUDGET	15,882,441	56,016,354	46,253,362	1,619,444	94,595,428	1,380,962	215,747,991
FUNDING							
Opening Balance							
Income							
The Netherlands Red Cross (from Netherlands Government)	965,448	723,726	723,726	241,651	1,206,285		3,860,836
The Netherlands Red Cross (from Netherlands Red Cross Silent Emergency Fund)		48,840			51,875		100,715
The Republic of Korea National Red Cross		30,000		30,000			60,000
The Thai Red Cross Society (from Taiwan Red Cross Organisation)	199,676						199,676
Toyota Motor Corp.					19,102		19,102
Tullow Guinea Limited		181,376					181,376
UNDP - United Nations Development Programme	256,942	3,866,292			1,789,480		5,912,714
UNICEF - United Nations Children's Fund	46,903		140,110		456,266		643,279
Unidentified donor		700	1,278		-94		1,884
United States Government - USAID		5,882,165	983,690		12,609,277		19,475,132
World Cocoa Foundation	138,598	181,163					319,761
Cash contributions	12,506,735	33,608,783	21,032,585	628,835	58,886,142	182,266	126,845,346
British Red Cross		100	100		100		300
Finnish Red Cross					162,531		162,531
Spanish Red Cross					4,050		4,050
Swiss Red Cross					127,872		127,872
The Netherlands Red Cross		30,078	11,790		162,539		204,407
UNICEF - United Nations Children's Fund			541,093				541,093
Inkind Goods & Transport		30,178	552,983		457,092		1,040,253
Australian Red Cross			65,515				65,515
British Red Cross		2,452	68,874				71,326
British Red Cross (from British Government)					69,820		69,820
Canadian Red Cross	6,230	20,348			66,439		93,017
Canadian Red Cross (from Canadian Government)	26,939	45,355					72,294
Danish Red Cross			220,486				220,486
Finnish Red Cross	21,245		73,035				94,281
French Red Cross		12,450					12,450

	MDR60002	MDRGN007	MDRLR001	MDRNG017	MDRSL005	MDRSN010	Total
	Africa	Guinea	Liberia	Nigeria	Sierra Leone	Senegal	CHF
BUDGET	15,882,441	56,016,354	46,253,362	1,619,444	94,595,428	1,380,962	215,747,991
FUNDING							
Opening Balance							
Income							
Irish Red Cross Society			5,035				5,035
Kenya Red Cross Society			16,467				16,467
New Zealand Red Cross			46,797				46,797
Norwegian Red Cross					70,831		70,831
Spanish Red Cross					7,924		7,924
Swiss Red Cross	35,933				20,173		56,106
United States Government - USAID					287,647		287,647
Inkind Personnel	90,347	80,605	496,209		522,833		1,189,995
Airbus		-3,287	-137				-3,424
British Red Cross (from British Government)					573		573
ChevronTexaco Corp.			-68				-68
DFID Partnership Allocations	-787,994						-787,994
Freshfields		-180	-158				-337
Informa			-133				-133
KPMG Disaster Relief Fund		-250	-110		-250		-609
KPMG International Cooperative(KPMG-I)	-1,006	-2,196	-1,617		-1,617		-6,437
Louis Berger		-17	-2				-18
Nestle		-2,104	-96				-2,200
Olam		-29	-119				-149
Philips Foundation		-215					-215
Services Fees					10,870		10,870
Shell				-3,080			-3,080
Sime Darby Berhad			-7,117				-7,117
Sundry Income		153			7,880		8,032
Toyota Motor Corp.					-955		-955
Tullow Guinea Limited		-9,069					-9,069
United States Government - USAID					26,251		26,251
Other Income	-789,000	-17,194	-9,557	-3,080	42,751		-776,079

	MDR60002	MDRGN007	MDRLR001	MDRNG017	MDRSL005	MDRSN010	Total
	Africa	Guinea	Liberia	Nigeria	Sierra Leone	Senegal	CHF
BUDGET	15,882,441	56,016,354	46,253,362	1,619,444	94,595,428	1,380,962	215,747,991
FUNDING							
Opening Balance							
Income							
Total Income	11,808,083	33,702,372	22,072,221	625,755	59,908,819	182,266	128,299,516
TOTAL FUNDING	11,808,083	33,702,372	22,072,221	625,755	59,908,819	182,266	128,299,516
COVERAGE	74%	60%	48%	39%	63%	13%	59%

ADDITIONAL CONTRIBUTIONS TO THE OPERATION (based on information Logistics received from partners)

	MDR60002	MDRGN007	MDRLR001	MDRNG017	MDRSL005	MDRSN010	Total
	Africa	Guinea	Liberia	Nigeria	Sierra Leone	Senegal	CHF
Bilateral Contributions							
American Red Cross					38,148		38,148
British Red Cross					3,123		3,123
Canadian Red Cross					660,710		660,710
Danish Red Cross					25,089		25,089
Finnish Red Cross					155,627		155,627
French Red Cross		20,000					20,000
German Red Cross					845,560		845,560
Norwegian Red Cross					488,004		488,004
Spanish Red Cross					563,590		563,590
Swiss Red Cross		39,500					39,500
Total Bilateral Contributions		59,500			2,779,850		2,839,350