

www.ifrc.org  
Saving lives,  
changing minds.

## Emergency Plan of Action (EPoA) Paraguay: Floods

 International Federation  
of Red Cross and Red Crescent Societies

<b>EMERGENCY APPEAL</b>	<b>Operation Number MDRPY018; Glide Number FL-2015-000171-PRY</b>
<b>Date of issue:</b> 27 January 2016	<b>Date of disaster:</b> 15 December 2015
<b>Operation manager:</b> Pabel Angeles – Regional Disaster Management Coordinator for South America	<b>Point of contact:</b> Fernando Casanova – Director General of the Paraguayan Red Cross
<b>Operation start date:</b> 24 December 2016	<b>Expected timeframe:</b> 10 months
<b>Overall operation budget: 2,084,871 Swiss francs (CHF)</b>	
<b>Number of people affected: 136,450 (27,290 families)</b>	<b>Number of people to be assisted: 24,560 people (4,912 families)</b>
<b>Host National Society:</b> The Paraguayan Red Cross (PRC) has 10 branches, 200 volunteers and 40 staff members.	
<b>Red Cross Red Crescent Movement partners actively involved in the operation:</b> Swiss Red Cross, International Committee of the Red Cross (ICRC) and International Federation of Red Cross and Red Crescent Societies (IFRC).	
<b>Other partner organizations actively involved in the operation:</b> National Emergency Secretariat (SEN), Ministry of Public Health and Social Welfare (MSPBS) – II Health Region, Armed Forces, fire department, volunteer fire department in San Pedro de Ycuamadyu, Agricultural Extension Directorate (DEAg), National Navy, National Police, Paraguayan Red Cross, National Electricity Authority (ANDE), departmental government through its Disaster Risk Management and Reduction Secretariat	

<Click [here](#) for the Appeal budget. [Here](#) for a map of the affected area. [Here](#) for the contact information>

### A. Situation analysis

#### Description of the disaster

Climate conditions in December have been strongly influenced by the El Niño phenomenon, which has unleashed storms and significant levels of rainfall across the Paraguayan territory, especially in the northern and eastern regions, where the hydrometric levels of major river basins have been affected. The water levels in a number of Paraguay's river have risen significantly, causing flooding in several parts of the country.

According to consolidated data from the Paraguayan Red Cross, 27,290 families (136,450 people) are affected across 10, out of 27, departments in the country. Also, according to a United Nations Office for the Coordination of Humanitarian Affairs (UN-OCHA) report, released on December 28th 2015, at least 130,000 people across the country have been evacuated because of river overflows caused by heavy rains. On 23 December 2015, a state of emergency was declared through Act 5561 for municipalities in the departments of Concepción, San Pedro, Misiones, Ñeembucú, Amambay, Presidente Hayes and Central. At the request of the Paraguayan Red Cross, the IFRC has allocated CHF 205,097 of its Disaster Relief Emergency Fund (DREF) to respond to the emergency.



**Flooded dwellings in bañado norte, Asunción, Source: IFRC**

On 10 July 2014, 1,087,723 Swiss francs was allocated from the appeal (decreased from CHF 1,815,467) to support the Paraguayan Red Cross in the delivery of assistance and the provision of support to 15,000 people (3,000 families), with a focus on water, sanitation and hygiene promotion, psychosocial support, shelter and livelihoods. The PRC's previous operation, which covered a period of ten months, assisted 2,450 persons through psychosocial

support, 7,030 persons through basic hygiene promotion activities and information, 2,685 families in through hygiene kits, kitchen kits, tarpaulins and toolkits to cover and protect their shelter (roofs or walls) and 386 families received buckets, dispensers and jerrycans from kit 2 Panama. A total of 1,998 families received supplies for transport and safe water consumption as buckets and water filters, 345 families received supplies for water treatment (Pur and aqua tabs) and 1,370 families received food kits.

While flooding in Paraguay is normally cyclical, the flooding that occurred from 2013 to 2015 was the result of prolonged and heavy rainfall in March and April, which increased the water level of two of Paraguay's most important rivers (Parana and Paraguay). The Paraguay River for example reached a maximum height of 7.19 meters in July 2015, prompting the evacuation and displacement in the municipality of Asunción of about 17,789 families; according to municipality of Asuncion officials, the displaced families were housed in 126 collective centre, and the municipality requested the Paraguayan Red Cross's support in the water, sanitation and shelter sectors.

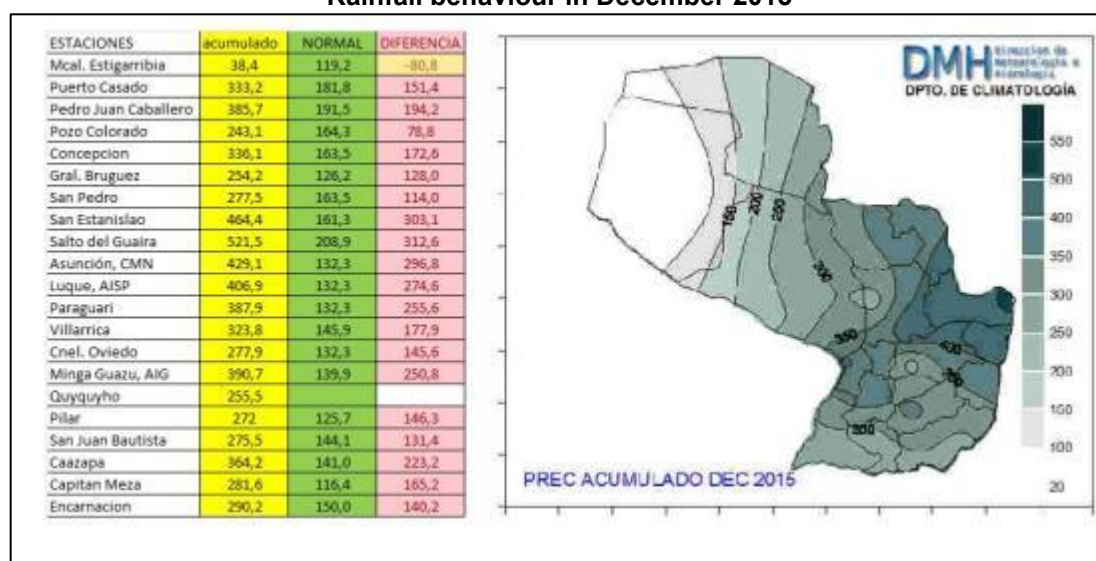
### Damages Nationwide

Departments	Families
<b>Alto Paraná</b>	182
<b>Ñeembucú</b>	4,723
<b>Concepción</b>	1,780
<b>Misiones</b>	645
<b>Itapúa</b>	291
<b>Chaco Central</b>	1,600
<b>Presidente Hayes</b>	1,741
<b>Central</b>	150
<b>Asunción</b>	13,197
<b>San Pedro</b>	2,981
<b>Total</b>	<b>27,290</b>

Source: Data consolidated by the PRC to 9/01/2016<sup>1</sup>

According to December reports from the National Meteorology and Hydrography Directorate, rainfall has been double or triple that of normal levels, as indicated by the figure below. According to the scientific community, the presence of the El Niño phenomenon will be at its peak in January, and it is expected to continue until mid-2016.

Rainfall behaviour in December 2015



<sup>1</sup> Consolidated information from field assessments, SEN and department and municipal reports.

Based on the emergency situation, the Paraguayan Red Cross has focused its assessment teams in the three most affected departments. The situation analysis is as follows.

### Asunción department

The department of Asunción has been the most affected by rising river levels, which have reached 7.71 metres, the highest level in the past 20 years. This situation has been attributed to the El Niño phenomenon. A total of 131 collective centres have been set up in Asunción to house 13,197 families (65,985 people), who were evacuated from several areas either because they have been affected or are at risk.

<b>Temporary collective centres set up in Asunción department</b>		
<b>Zones</b>	<b>No. of collective centres</b>	<b>Families</b>
Yukyty	15	654
Cateura	22	1758
Santa Ana	11	1249
RI14	10	2292
Brugada y Jara	4	70
Sajonia-Chacarita	16	1868
Mbigua	16	962
Tablada Nueva	13	1241
Lombardo-Santa Rosa	5	1013
Puerto Botanico-Viñas Cue	14	1181
Zeballos Cue	5	909
<b>Total</b>	<b>131</b>	<b>13,197</b>

Source: Paraguayan Red Cross. Date 9/01/2016

### San Pedro department

Flash flooding has been reported in the northern department of San Pedro in Paraguay. Alongside the unusual precipitation (heavy rain storms and hail), these flash floods have led to the overflowing of the Jejuí, Paraguay, Aguaray-Mi and Aguaray-Guazú Rivers in the San Pedro department

On 2 January 2016, the emergency operations centre (EOC) in the San Pedro department reported that 2,981 families (14,905 people) in the department have been affected. Moreover, 1,946 families are at risk because of their proximity to the affected rivers and the significant damage that this may cause to their livelihoods; a total of 462 families have suffered total or partial damage to their homes, and 520 families are incommunicado.

In total, 10 of San Pedro's 20 districts have been affected by the flooding. The following table details the number of affected families by district:

<b>Affected districts</b>	<b>Number of affected families</b>
<b>SAN PEDRO DE YCUAMANDYYÚ</b>	643
<b>ANTEQUERA</b>	200
<b>NUEVA GERMANIA</b>	456
<b>LIMA</b>	318
<b>SAN PABLO</b>	221
<b>GUAYAIVI</b>	2
<b>VILLA DEL ROSARIO</b>	642
<b>SANTA ROSA DEL AGUARAY</b>	94
<b>CHORE</b>	110
<b>SAN ESTANISLAO</b>	295
<b>TOTAL</b>	<b>2,981</b>

Source: SEN EOC in San Pedro - 2 January 2016

In the districts of Guayaibi, Capiivary, San Pedro de Ycuamandyyú, Lima and Nueva Germania 1,105 families were also affected by hail storms.

### Ñeembucú department

According to a report based on the District Emergency Committee's EOC and PRC's field assessments that was issued on 8 January 2016, 4,723 families have been affected in the department of Ñeembucú. To date, 871 families are in collective centres, and approximately 504 families are stranded on islets due to the flooding. Since last month, the Paraguay River's water level has raised an average of 6 cm per day. In addition, 45,000 families are at risk because of their proximity to the affected rivers and the significant damage that this may cause to their livelihoods. A total of 16 districts in Ñeembucú have been affected by the floods. The following table lists the number of families affected and the district they reside in:

District	Families
Cerrito	400
Desmochados	97
Gral. Díaz	117
Guazú Cuá	128
Humaitá	135
Isla Umbú	125
Laureles	273
Mayor Martínez	316
Paso de Patria	85
Pilar	600
Tacuaras	136
Villa Franca	195
Villa Oliva	516
San Juan Ñee	Data unavailable at present
Alberdi	1,488
Villalbín	112
<b>Total</b>	<b>4723</b>

Source: PRC field assessments and EOCs in affected districts. 09/01/216

### Summary of the current response

The authorities, local civil society organizations, international non-governmental organizations (INGOs), United Nations (UN) agencies and the PRC, supported by its Red Cross and Red Crescent Movement partners, are responding to the situation by carrying out evacuations and rescue operations, as well as providing relief and other assistance to those affected. The IFRC has allocated DREF funds for CHF 205,097 to support 2,045 persons with urgently needed relief items. An emergency appeal is now being launched to support further relief and recovery operations. The IFRC appeal will focus on the three 'disaster zone' areas of San Pedro, Asuncion and Ñeembucú.

As part of the DREF operation, the Paraguayan Red Cross provided support in San Pedro and Asuncion through the development of detailed assessments, psychosocial support activities and the purchase of food kits. Moreover, sanitation facilities have been rebuilt in Asuncion.



Assessment of collective centres in Bañado Norte, Asunción. Source: IFRC

Medical care and first aid have been provided to treat cases of high blood pressure, diabetes, diarrhoea, fevers in children, bacterial skin infections, dehydration and anaemia; the latter of which was mostly in young children and adolescents.

As for the psychosocial support campaigns in the nine collective centres (CHATs for its acronym in Spanish), a detailed evaluation was performed through observational visits in the CHATs and interviews with key actors; these actions made it possible to launch the second phase of psychological first aid actions in communities, in which the PRC staged recreational activities for young children, adolescents and mothers in the psychosocial tent in the CHATs. Additionally, seven previously installed health units (a bath and shower) have been repaired, and another two new health units have been installed, benefiting 12 CHATs.

Also, during the DREF operation, a detailed field evaluation, which lasted for around nine days, was conducted in San Pedro to determine the final list of beneficiaries. Furthermore, a project management team has been hired, and the purchase process for the acquisition of hygiene kits, food, buckets and security equipment has closed; logistics will schedule the distribution of the relief items to the beneficiaries.

### **Overview of Host National Society**

The PRC's national headquarters is located in Asunción; the National Society has 10 branches, 200 volunteers and 40 staff members. The PRC has an established management structure, which is composed of a paid staff consisting of an executive director, a legal advisor, a director of cooperation and strategic relations, a director of volunteering; director of youth, a director of administration, a head of the communication department, a director of risk reduction, a head of community health and social inclusion and a head of training. Volunteer staff members provide support in the areas of relief and youth.

Support from the PRC's national headquarters has been crucial to the establishment of the response actions implemented in Asunción, San Pedro and in the Ñeembucú department. The Paraguayan Red Cross is providing support to the information management actions, situation update reporting and damage assessments. In terms of operational coordination and logistics, the PRC is monitoring EOC operations, donations and warehouse management.

The National Society Risk Reduction and Disaster Management unit has the capacity to coordinate actions and trained volunteers available to provide support for this operation. Currently, there are 45 National Intervention Team (NIT) members, and there are teams specialized in livelihoods, the use of Open Data Kit (ODK) and Mega V tools, psychosocial support, and water and sanitation and hygiene promotion. The Risk Reduction and Disaster Management unit of the Paraguayan Red Cross has activated its EOC, which in turn has activated local NIT members and maintains a database of other NIT members available for deployment.

In San Pedro, the PRC has a steering committee that is providing support to the affected population. In addition, the PRC has appointed personnel to the governor's departmental EOC. The National Society has deployed a team to the field from headquarters to support response actions together with San Pedro branch personnel.

National Society health, psychosocial support, pre-hospital care and water and sanitation teams have been supporting assessment and response actions, as well as coordinating actions at the Asunción and national level.

The Paraguayan Red Cross Society Ñeembucú branch, which is part of the District Emergency Committee (CED), is actively participating in response activities, such as assessments, evacuation, collective centre set up, humanitarian assistance support and the strengthening of temporary walls, mainly in the district of Pilar.

### **Overview of Red Cross Red Crescent Movement in country**

The International Red Cross and Red Crescent Movement coordination mechanisms in Paraguay include a tripartite agreement, which was signed by the IFRC, the International Committee of the Red Cross (ICRC) and the Paraguayan Red Cross on 30 May 2015. This agreement has the objective of increasing the overall capacities of the Movement to enable it to fulfil its humanitarian mission and to support the National Society's capacities.

The Paraguayan Red Cross maintains contact and fluid communication with the IFRC through its regional disaster management coordinator for South America.

The Swiss Red Cross (SRC) has committed to providing support for the initial DREF operation.

In Paraguay, the ICRC, with support from the PRCS, assists people affected by other situations of violence, works with State authorities for the integration, implementation and dissemination of international humanitarian law and

international standards on the use of force, and visits persons deprived of liberty while concurrently providing structural support to the prison system; additionally, the ICRC provides structural support to several departments of the PRC, including capacity-building actions so that the National Society is prepared for emergencies in contexts of violence. The ICRC is working with the PRCS to reinforce its capacities in the field of restoring family links (RFL), and it works with State authorities on dead body management in emergencies.

The International Committee of the Red Cross is maintaining contact with the Paraguayan Red Cross Society and has offered its support, if necessary, for the technical areas related to its mandate and expertise, such as restoring family links and dead body management. The ICRC has agreed to support a RFL needs assessment that the PRCS will do in coordination with Argentinean RC, with a special focus on the families of Alberdi, displaced to Formosa (Argentina) and others locations.

### **Movement Coordination**

The IFRC's regional disaster management coordinator for South America has travelled to Paraguay to the support Paraguayan Red Cross's assessment actions in Asunción and Ñeembucú and the drafting of the international appeal. The Disaster and Crises Response and Early Recovery Department is reporting on and coordinating support with International Movement of the Red Cross actors. The PRC has also kept the ICRC, Swiss Red Cross, American Red Cross and Spanish Red Cross abreast of the situation.

### **Overview of non-RCRC actors in country**

The municipalities in the affected areas are conducting humanitarian aid and general logistics support actions, especially in the provision of guidance and maintenance of constant communication with the departmental EOC to monitor operational aspects and receive feedback from the affected families. The National Society has been cooperating and coordinating with State (national and departmental) institutions and other organizations since early December.

In Asunción, the Municipal Risk Management Secretariat (COMUEDA) is engaged in the response efforts. An organized structure for the coordination, administration, management and operations has existed since the start of the flooding, but the lack of financial resources has challenged more concrete responses. The National Society has cooperated with COMUEDA to reinforce processes and structures, further strengthening its activities.

The Asunción municipal government requested that the PRC monitor the establishment of the municipal EOC. Additionally, the PRC supports the Water Roundtable in Asunción, which is led by SEN, with information management and data collection. The water, sanitation and hygiene promotion needs have been evaluated, although the report has not yet been made public. As part of its assessment that was conducted from 19 through 21 December 2015, the PRC visited 40 of the more than 100 existing collective centres.

The Ministry of Health, through its general directorate for health surveillance (DGVS), has issued a sanitary alert for Asunción. The National Service for the Elimination of Malaria (SENEPA) is engaged in the collective identification and elimination of vector-breeding grounds. Of the 689 homes visited in Asunción, which were mainly located in the Santa Ana neighbourhood in the impoverished area of the city, Bañado Sur, 288 were detected as having extensive vector-breeding grounds; these have since been eliminated.

In past two weeks of the health emergency, the health region XVII (the decentralized health structure component of the Ministry of Public Health and Social Welfare<sup>2</sup>) provided comprehensive health care, vaccination, and medication to 291 affected people in Asunción. This State health unit reported that it provided medical care to an additional 269 people in 7 collective centres and safe zones above the floodplain. Health region II, which covers San Pedro, has conducted several medical care interventions that have been supplemented with actions in prevention of epidemic aimed to avoid at improper handling of water, lack of access to sanitation and hygiene and proliferation of vectors activities. It has also taken advantage of the population's use of medical consultations to address issues such as family planning and others of interest to the community. To date, 569 people have been treated for respiratory diseases, dermatitis, diarrhoea and colds, among others, by the actions of health region II.

ANDE has restored power in the five affected areas of San Pedro, and it is providing electricity to the collective centres in Asunción. Given the danger of flooded electric cables, ANDE also monitors the electrical supply and cuts the supply when required.

The Paraguayan Red Cross coordinates its response actions in San Pedro with the departmental EOC in conjunction with the SEN and with support from the navy, national police and local municipalities. The departmental EOC and SEN

<sup>2</sup> <http://www.mspbs.gov.py/v3/xviii-region-sanitaria/>

have distributed 506 tents and 1,670 food kits to the affected families in San Pedro. The national navy, which is based at Puerto Antequera in San Pedro, is conducting search and rescue actions and providing logistical support by river under the command of the department EOC.

The Agriculture Extension Directorate is conducting assessments and gathering data in the affected areas in order to quantify the agricultural and small livestock losses by families involved in the institution's production programmes.

The United Nations Children's Fund (UNICEF) and Plan International are providing temporary shelter solutions with tents and recreational and psychosocial contention activities for children and adolescents in Asunción. The Social Pastoral and some media outlets are engaged in campaigns to collect non-perishable food items for the population affected by this emergency.

Together with a Shelter Box team, the Paraguayan Red Cross Society is assessing the possibility of supporting the shelter line, which is provided for within the National Society's General Plan of Action for the Paraguayan territory; this is being done in order to expand the number of people provided with y materials and tarpaulins to improve their temporary housing structures.

Under an agreement with the Ministry of Labour, the National Emergency Secretariat (SEN), and participation by the National Professional Promotion Service (SNPP), an Emergency Employment Inclusion project will be implemented. This project is intended to train about 200 people so they can have access to employment in the shelters themselves for the duration of the emergency (as electricians, community health point persons, sanitary unit maintenance, etc.). These trainings will also allow people access to other employment opportunities post-emergency. This project will be funded by the Ministry of Labour and implemented by the Paraguayan Red Cross Society.

A response in Pilar is being organized through the EOC; the national police are providing security to evacuation centres and at-risk areas, and the army and the navy are repairing damaged walls and plugging leaks.

## Needs analysis, beneficiary selection, risk assessment and scenario planning

### Water and Sanitation

**Asunción:** Access to clean and safe water in the collective centres in Asunción is guaranteed by the water company (ESSAP), with the installation of water faucets. However, there are collective centres in which water supply is limited since these faucets have yet to be installed. Additionally, the demand is high with one faucet being used for 10 families. Attention is needed to support people's knowledge and practice of clean water practices, particularly since the water points are not always near the collective centre itself and the water storage facilities are inadequate. .

The latrines can potentially overflow as the level of the rivers rises. If contamination were to occur, the population will need to use aqua tabs to purify their water. Additionally, mobile toilets have not been installed in the locations where the displaced people have temporarily settled. According to the evaluation done by the water working group, there is an urgent need to install 355 temporary toilets. In many of the collective centres, the toilets are holes in the ground.

Lastly, waste and rain water are not being drained in a safe manner, which could produce health problems.

The National Society should consider different methodologies or approaches in their response and recovery interventions; past operations have shown that the Red Cross's interventions are well received by affected communities (e.g. the water systems implemented during the drought response in El Chaco)..



Installation of Paraguayan Red Cross sanitary modules in Asunción - Source: IFRC

**San Pedro:** The water supply network is functioning, and 90 per cent of the population has access to this service. Nonetheless, the remaining population, especially those located near rivers, are consuming untreated river water that is being distributed to each household via an electric motor. Currently, 462 families have flooded dwellings, and 520

families have been cut off by the flooding and do not have access to safe drinking water. Some latrines have been breached by the flood waters, which could sicken people that consume water directly from the river.

**Ñeembucú:** The water supply of families connected to ESAP has not been affected, but at least 70 per cent of the population does not have access to this service; instead, they obtain their water from wells, which at this point have been polluted by the floods. Another part of the population obtains their water from streams, estuaries, lagoons, and rivers, which is consumed without prior treatment. Currently, 4,723 families are affected by the floods and at least 90 per cent lack access to safe water.

## Health

**Asunción:** Cases of injury during displacement have been registered. Seven people died from electrical shocks and two others perished when they were swept away by the strong water currents. In the temporary camps, cases of diarrhoea and skin problems have been reported, which could possibly be eradicated with promotion of hygiene and safe water use.

The emotional impact on the affected population is noticeable, particularly due to the large number of young people, elderly adults and people with a disability who are located in these temporary camps. The sense of powerlessness and lack of future plans makes this situation extremely problematic, particularly when combined with the reality of the loss of income due to the emergency. In the latter case, this entails the inability to purchase construction materials, rent vehicles to move their household items and acquire emergency medication. Children and adolescents are also exposed to high levels of social and family tension, which in addition to their own losses and difficulty to understand the situation, are a challenge to their healthy adaptation. Some of the symptoms seen in children include increased aggressiveness, crying and insomnia, among others.

As these aspects have been observed at the community level, it is necessary to foster community resilience building and work with the affected children and adults to overcome this disaster. Preventative communication, which allows for community early warning and building actions, is required.

The communities visited by the PRC requested increased medical attention from State institutions. A vaccination campaign was conducted in 1 of the 131 collective centres in Asunción.

As part of the lessons learned for the health sector, it is important to mention the strong and coordinated support on psychosocial support (PSS), which was conducted jointly with the National Society's headquarters, to mobilize additional resources to the area in past operations (2013); this support increased the reach of PSS activities and enhanced the communities' capacity to provide PSS.

Community training on community-based health and first aid (CBHFA) resulted in a multiplier effect with beneficiaries becoming replicators of key messages on safe water management and personal hygiene during the floods response operation in 2014 (Ñeembucú and Misiones).

During the operation in Concepción (2015), which was in response to a local storm, people reached through PSS interventions suggested that the Red Cross increase the amount of information targeted at children, hold more talks and training, and ensure follow-up activities on PSS.

Given potential budgetary constraints that could affect future hygiene promotion actions, it is important to prioritize —the development and printing of sensitization materials for community sensitization sessions that are adapted to the affected population's the cultural characteristics.

**San Pedro:** To date, no injured, missing, or deceased persons or emergency-related outbreaks have been reported. People have been treated for respiratory diseases, dermatitis, diarrhoea and colds, among others.

On-site assessments have detected a high degree of emotional impact among the affected population, particularly since 90 per cent are experiencing this kind of emergency for the first time. The sense of helplessness and hopelessness regarding the future is pervasive in the face of the loss of livelihoods and the discouraging forecasts. Initial assessments



**Improved shelter in Asunción Source: IFRC**

indicate a low level of social cohesion in the communities that were visited, which might impact the rate at which community resilience building occurs.

A primary health care unit with medical supplies is available for assistance if required.

**Ñeembucú:** So far, there have not been any reports of injured or missing persons, deaths or endemic outbreaks in the area. There is an increase in the number of people being treated for respiratory diseases, dermatitis, diarrhoea and colds, among others.

High levels of stress have been detected in the evacuation centres and people sheltering with relatives, especially among children and older adults, and consumption of alcoholic beverages has been observed among adults, which causes social problems in the evacuation centres. The feelings of frustration are evident among parents because of forecasts that climate conditions are expected to worsen. Most are unable to engage in their livelihoods, and all of these situations are causing psychological damage to the sheltered families.

There are coordinators in evacuation centres, PSS teams in sectors, and the national police to keep the peace.

### **Shelter**

**Asunción:** In 2014, the SEN established some municipal facilities in Asunción to be used as collective centres. However, these are insufficient and have led to the occupation of public and private spaces, such as plazas, sidewalks, sports fields, abandoned lots, and churches, among others. Evacuated families have taken apart their houses in order to build collective centres in other locations. Some affected people have been staying with their own families in other locations and others have travelled farther due to the lack of space in the collective centres near their homes.

The collective centres in Asunción are overcrowded, lack natural light and use precariously established electrical systems. In the collective centres visited by the PRC, none had been adapted for persons with disabilities, chronic illnesses, mobility challenges or the elderly. The small collective centres, less than 18m<sup>2</sup>, house families that often have more than 5 people. This population is awaiting their return to their homes. Were this emergency to become more serious, improved management and the provision of services would be required.

**San Pedro:** Four facilities have been allocated for the establishment of collective centres: 1 in the PRCS Colorada branch and 1 in Charity Directorate Sports Arena – DIBEN, both of which located in San Pedro del Ycuamandyyú; 1 in the municipal storage building in Nueva Germania and 1 in the municipal storage building in Santa Rosa del Aguaray. To date, 462 houses are under water with total or partial damage to their structures, and 1,826 additional homes are at risk. The most frequently used construction materials are brick and adobe, and the latter has a high risk of collapsing in flood situations.

**Ñeembucú:** Pilar currently has 11 evacuation centres (with bathrooms, drinking water, electricity, cement flooring and permanent roofs) housing 73 families. To date, 336 families have been evacuated, although 78 per cent are not stay in evacuation centres, but rather in the homes of relatives or neighbours as social ties, or vacant lots in the neighbourhood. In total, 663 families have been affected. The most common construction materials are brick and adobe, the latter of which collapses easily in flood situations.

Districts in the interior have no evacuation centres, although the municipalities have helped them to relocate. In total, 88 per cent of people in these districts are staying in tents close to their homes.

### **Livelihoods and food security**

Livelihoods have been severely affected in Asunción, San Pedro and Ñeembucú San Pedro. Floods and related precipitation events have caused many families to lose their income generating capacity, thus endangering their food security, health needs and other basic requirements. The following section provides details on some of the most salient aspects of the challenge to food security at this moment in both locations. The slow moving floodwaters are of additional concern; although they do not pose a major risk to loss of life or shelter, these floodwaters are receding very slowly, making it is very likely that additional damage to livelihoods will be revealed in these areas.

As part of the lessons learned in the livelihoods sector, it was noted that the local authorities acknowledged the work done by the Red Cross during the floods response operation in 2014 (Ñeembucú and Misiones) on the implementation of new technologies and the cash transfer programme (CTP) to assist the affected population in a more timely and dignified manner, and closely monitor and follow up on the CTP to assess the impact and satisfaction of the intervention. The application of the CTP methodology to other humanitarian aid interventions (food and hygiene) was one of the key recommendations, as beneficiaries were able to choose the products they needed to purchase based on their livelihoods needs. Also, it became evident how essential it was to create a network for permanent communication among the main CTP stakeholders such as the PRC and Stores/suppliers, the PRC and community, and the community and suppliers; permanent communication channels between the PRC and community members enable the National Society to:

1. Prepare the list of beneficiaries;
  2. Give notice about the development of different activities; and
  3. Mitigate the effect of negative rumors being spread in the community about late delivery of vouchers.
- Moreover, beneficiaries are able to make efficient use of their vouchers by ensuring supplies or orders were available through direct communication with the suppliers.



**Flood damage to subsistence crops:  
Source: Paraguayan Red Cross**

**Asunción:** A large part of the affected population in Asunción is engaged in low-paying or independent labour (day labour or in the informal economy), in which recycling, fishing, small commerce, day workers, carpenters, electricians, gardeners, cosmetologists and domestic workers predominate. The forced displacement of affected people has caused a negative impact on their daily income since they are unable to work, and thus make the necessary funds to purchase their daily diet. In many cases, the forced displacement not only entails the move itself, but also the identification, guarantee and protection of one's space in the established temporary camps.

Currently, different groups of people are implementing livelihood strategies of small one-time labours such as cleaning up other areas, washing clothes, gardening and at times begging. While those engaged in recycling can continue working, they often lack the space to store their items. Small merchants often have lost their products in the flooding. Small animals, which were used to supplement income in marginal areas, had to be sold or died in the emergency.

Commercial activities in Asunción are functioning normally except in neighbourhoods close to the rivers.

**San Pedro:** According to the report submitted by the Agricultural Extension Directorate, 50 to 75 per cent of the agricultural areas in the northern areas of the country have been affected. It has been estimated that 40 per cent of 15,000 hectares of sesame have been lost, as well as 25 per cent of 22,000 hectares of cassava and 30 per cent of approximately 10,000 to 12,000 hectares of horticultural produce.

As at least 75 per cent of the land has been affected, the raising of large and small livestock in these areas is a challenge. These animals are used for both consumption and income generation. As a survival strategy, many people have had to sell their cattle due to the lack of dry pastures areas in pasture needed to maintain them, and to prevent outbreaks of animal diseases. An estimated 25 per cent of the cattle have been evacuated from the flooded areas, and deaths of small livestock animals have been reported. Additionally, since most of the day labour work in this region is done on farms with livestock, day labours have also lost their source of income, creating a situation in which they are unable to cover their basic needs, especially food.

According to the Disaster Risk Management and Reduction Secretariat, the floods have affected between 50 and 75 per cent of fishing activities; the flooding has resulted in an even more complicated scenario for fisher people since this emergency has coincided with the period in which most fishing is prohibited due to the spawning or hatching season. As a result, these people are unable to generate the needed income to cover their basic needs. Furthermore, flooding causes fish to disperse, which will make this activity even more difficult once the seasonal prohibition is lifted.

Damage to this sector is 100 per cent since bricks are made from local raw materials. This situation has prevented people in this industry from working and thusly generating income to meet their basic needs.

**Ñeembucú:** This area is characterized by vast plains and sandy soil, which is not ideal for agricultural production, prompting families to raise crops for self-consumption and for animal feed. Most livelihoods involve primary production, i.e. farming and fishing. Agricultural production is basically for consumption, fishing is for income

generation and for meat, smaller livestock are for consumption and sale during the holiday season, while larger livestock is used for milk that is later used to produce cheese, which constitutes an important and permanent source of income. Calves and replacement livestock function as reserves, i.e. sold during hard times or to cover health needs, hence the severity of the disaster on the families' livelihoods. Around 80 per cent of agricultural production has been lost, people have consumed their smaller livestock to survive and larger livestock have been relocated to higher ground far from their homes, which means people are no longer producing cheese. Moreover, the lack of fodder has caused the animals to lose weight, causing sale prices to plummet way below the usual market price. Fishing in the river is currently unfeasible. This situation involves risk for families in terms of food security and their limited capacity to revive their livelihoods. Commercial activity in Pilar has been developing normally, except in riverside villages affected by the flooding.

### **Risk Assessment**

According to the Meteorology and Hydrology Directorate and to forecasts from IFRC Climate Centre, rains are expected to peak in March and April 2016 due to the continued presence of the El Niño phenomenon. Seven other departments in the country are also being affected by flooding from heavy rains; as a result, this scenario could increase the impact and make it difficult to assist all of the affected people, which is a cause for concern because of the soil's saturation and the lack of mechanisms for draining the standing water rapidly (it could take up to three months to drain the water).

Within the collective centres in Asunción, there are dangers associated with abandoned electrical wires. The PRC teams that enter into any area need to identify the live electrical wires due to the danger these pose when wet.

As previously mentioned, the social impact on the affected population includes stress and increased tensions. It is necessary to continually monitor these elements on the individual and collective levels. The PRC has experience in working in collective centres, and it is respected by the population with which it works.

The SEN's national-level EOC has not been fully launched to provide all of the information and coordination with other institutions, thus making it more of a challenge to coordinate the provision of humanitarian aid. The PRC is working with the municipal body of COMUEDA towards the achievement of this required inter-institutional coordination.

Due to the level of the soil saturation and the lack of mechanisms for draining standing water, it could take up to three months to drain the water fully. Rains are expected to peak in March and April, which would worsen the impact of this scenario and make it difficult to assist all of the affected population.

As local state institutions normally finish their fiscal years during this period, state funds are scarce and often unavailable. Additionally, municipalities in this area are currently in a transition period between incoming and outgoing authorities, which also affects the availability of resources and assistance.

The emergency plan of action presents a readiness strategy to better respond to present situation and forecasted scenario.

## **B. Operational strategy and plan**

This operational plan has been developed by the PRC in consultation with the IFRC as well as input from Partners National Societies (PNSs). It focuses on the immediate needs of communities affected by the floods that occurred throughout the country in December 2015, January 2016. The operation also will address forecasted impact of El Niño Phenomenon which will be strongly active in the coming months producing heavy rains and more floods over already affected regions, livelihood and population.

The intervention will focus on San Pedro, Asunción and Ñeembucú, where the IFRC will support the PRC on the implementation of this plan, and can be extended to other affected areas. The rapid emergency response has already started, and it will quickly move to community preparedness. The recovery phase will start soon but some activities will be developed as soon as the rainy period comes to an end and communities are safe to return back home. As part of the initial DREF operation the Paraguayan Red Cross supported with assessments, PSS activities and delivery of food items in San Pedro and Asunción. This operation will continue supporting these communities providing essential emergency kits, emergency shelter, food and drinking water to the hardest-affected communities as well as first aid, medical care and the prevention of water and vector-borne diseases and community preparedness. Cash-for-work activities will aim to clean-up public infrastructure like hospitals while providing basic income to the community. The recovery phase will include support to the reestablishment of clean water systems, support to health facilities and outreach programmes as well as support to vulnerable households in terms of cash grants and livelihoods development. The operation will retain flexibility to be able to consider situations of extreme vulnerability while taking into account the responses of other humanitarian actors scaling up at the moment.

## Overall objective

Ensuring that at least 4,912 affected families in the departments of San Pedro, Asunción and Ñeembucú have access to humanitarian aid in terms of health, water and sanitation, food security, shelter, community preparedness and livelihoods according to each affected department's needs and following the evolution of heavy rains due to El Niño.

## Proposed strategy

This operation will reduce the negative impact that the loss of livelihoods, food security, health, shelter and water and sanitation has had on the affected population and disaster risk reduction expertise to support communities in their medium to long-term recovery process. The response strategy will be based on need and the complementarity of the local response. Thus far, no mitigation or risk reduction measures have been taken by authorities to support preparedness planning in Asunción, San Pedro and Ñeembucú. These three localities are located in a zone without adequate land planning and use. Any permanent interventions in the zone can represent a future risk for the most vulnerable population in the area. For example, in Ñeembucú 90 per cent of the area is located in a flood-prone zone.

## Health

PRC is proposing to support the existing health system by supporting linkages between branches and health authorities, raising community awareness of common communicable diseases, including information and provision of items such as Long Lasting Insecticidal mosquito Nets (LLINs) as well as training in epidemic control, among other activities. Lessons learned from the past response operations have highlighted the need for health to be integrated into future preparedness and response efforts, making training for branches an essential part of supporting PRC's capacity in the future. Undoubtedly this process will prioritize the areas of intervention of the operation. However, there is a need to strengthen the National Society's response capacity to confront other flooding scenarios.

Due to reports of flood water levels and damage to households, it is expected that minor injuries will increase and that first aid should be readily available to communities. As all townships have Red Cross volunteers trained in basic first aid, the focus will be on the distribution of first aid kits and their monthly replenishment for the first three months (small first aid kit- 35 per affected community and quarterly replenishment if needed). Also one advanced first aid kit and first aid to deal with major injuries in the acute response stage will be provided.

As it is expected that communicable diseases will rise due to poor environmental sanitation and flood waters, the prevention of communicable diseases is essential to ensuring the health of the affected populations. In order to support this, the PRC plans to mobilize and deploy Epidemic Control for Volunteers (ECV)/ CBHFA volunteers to affected townships with ECV toolkits (already adapted for local use). Teams will consist of approximately 5 to 6 members, including Training of Trainers (ToT) trained team members, and they will be responsible for health education and hygiene promotion in affected communities, including the distribution of enabling items such as clean delivery kits, oral rehydration salts [ORS] (including buckets and water tabs to most affected households), Information, Education and Communication (IEC) material, and clean up toolkits. As volunteer capacity is limited, training will be essential to continue such activities in the medium term; as a result, ECV volunteers will also train 5 volunteers per community in ECV to carry out health promotion activities in affected villages, including refresher training for existing ECV (in non-affected areas). Since ECV volunteers are also trained in epidemic control assessment and disease surveillance, they will also liaise with local branches and local authorities on potential disease outbreaks.

It is also expected that the Ministry of Health system at the local level may be unable to perform routine activities like immunization, drug distribution, deworming and vitamin A campaigns due to the flooding. Since the PRC already has an existing relationship with local authorities, it will support the health system in the following way:

### Asunción:

- At least 2,214 affected families receive health promotion information and training.
- At least 2,214 affected families have access to psychosocial support care and information.
- At least 2,214 affected families receive first aid care.

### San Pedro:

- At least 1,045 affected households receive health promotion information and training.
- At least 1,045 affected households have access to psychosocial support care and information.

### Ñeembucú

- At least 1,653 affected households receive health promotion information and training.
- At least 400 affected families affected in collective centres have access to psychosocial support care and information in the district of Pilar.

## Water and Sanitation

There was significant pre-existing water supply infrastructure in Asuncion (primarily piped water, ponds and hand pump installations) prior to the flooding. In the Ñeembucú region, most communities depend on surface ponds and deep water sources for their drinking water, and in San Pedro, piped water is a common water source and some people living by riverside are using untreated water for drinking purposes. In the current situation, most of the water sources are contaminated and unusable due to flooding or are inaccessible.

Asunción:

- 2,214 families affected by floods have hygiene kits, jerry cans and chlorine tablets.
- 15 sanitary units set up in collective centres are repaired and receive proper maintenance.
- 20 sanitary units are purchased and installed.
- At least 2,214 affected families receive water and health promotion information and training.

San Pedro:

- Up to 600 households whose homes have been completely flooded and who remain incommunicado receive hygiene kits and jerrycans.
- At least 1,045 affected households receive water and health promotion information and training.

Ñeembucú:

- 1,653 families affected by floods have jerrycans, water filters and chlorine tablets.
- 1 water bladder will facilitate the distribution of water to the affected population.
- 2 pumps will help extract water from affected dwellings.

## Food Security

San Pedro:

- A total of 1,045 households who have had their livelihoods and dwellings affected receive food kits.

Ñeembucú:

- A total of 1,008 households who have had their livelihoods and dwellings affected receive food kits in the districts of Pilar, Villavalbin, Mayor de Jesús and Cerrito.

## Livelihoods

The impact of the floods has caused a number of risks to food security, household food stocks have been damaged and people have been displaced. It is expected that immediate food security needs will be addressed by these other partners; consequently, only limited food or rice distributions are factored into this plan. Crop damage, seed stock damage, land, which is heavily silted, loss of tools, livestock, disruption of access to markets, etc., have a direct impact on households' finances. Moreover, not only is current food production and income generation affected, but the potential loss of the entire crop cycle in these areas will have a serious for farmers and the landless poor who rely on casual agricultural labour to meet their families' needs in the future.

The provision of unconditional cash transfers to meet early recovery needs can allow for households to prioritize urgent livelihoods protection needs. Moreover, in the recovery phase, the re-ignition of income generation activities in general would be best supported by conditional cash transfers paired with training components. In order to ensure the appropriateness of cash assistance in the recovery phase, markets will be assessed, both in terms of functionality and the inflation level.

San Pedro:

- 1,045 households with affected livelihoods secure resources through the CTP to support their reactivation.

Ñeembucú:

- 1,008 households with affected livelihoods secure resources through the cash transfer programme to support their reactivation.

## Shelter

The floods caused widespread displacement, with evacuation in most cases organized by government authorities, which often had support from PRC's branches and volunteers. Evacuations to the camps or simply to higher ground occurred under spontaneous community action. However, in most places people have returned or are returning home.

Where these camps remain, it is expected that the government of Paraguay, with support from other agencies, will take care of the temporary shelter needs.

Until field assessments can be completed, information on housing damage remains scarce from the other areas. Families who experienced flooding have also lost basic household items, even if their house is still intact. In order to meet the initial need for emergency collective centres for these people, relief items that can be dispatched from existing stocks and distributed rapidly, such as tarpaulins, basic tools, essential household items (blankets, clothes, kitchen sets), are needed. Cash-based assistance for the most affected families is the preferred option in areas where markets recover swiftly and can complement the distribution of in-kind items. Providing shelter materials such as tool kits will be necessary to support shelter provision in some locations. Distributions will be complemented by a shelter sensitization campaign on proper siting and the construction of emergency collective centres as well as the possible usage of unconditional cash grants to meet shelter needs.

Asunción:

- 2,214 affected families have materials and tools to improve their emergency housing through the cash transfer programme.

Ñeembucú:

- 180 affected families have materials and tools to improve their emergency housing through the cash transfer programme.

### **Community Preparedness and Disaster Risk Reduction**

The community preparedness and disaster risk reduction component of this plan aims to increase community safety and resilience through integrated risk reduction initiatives. When immediate emergency and relief needs are covered, there will be the need to undertake an analysis to identify specific needs for integrated community preparedness and risk reduction. Taking into account existing capacities and needs for improvement, the analysis will be translated into an action plan for engagement over the longer period in integrated programming aimed at enhancing community resilience. Lastly, the effects and the consequences, of climate change on the context, lifestyle, risks and challenges that the community are facing, will be factored into the action plan.

DRR activities in past operations (e.g. Paraguay Floods 2014) are often limited or eliminated due to budgetary constraints. However, there is a clear need to carry out disaster risk reduction activities because these events are cyclic processes in the life of these communities and preparedness to face these types of situations is a necessary step toward reducing losses and mitigating the negative impact of such events.

### **National Society's Institutional Preparedness and Capacity Building**

This relief and recovery operation is seeing a rapid increase in Red Cross activity in the communities that are being prioritized. The operation seeks to ensure that the branches involved are adequately supported both during the scale up and later during the scale down. The intention of this operation, which will primarily use Red Cross volunteers, is to scale up during the relief phase of this operation. Provinces and regions that are not significantly affected by the floods are currently being asked to identify active volunteers who are willing to be involved in the operation. Teams of PRC volunteers will then be deployed to priority communities and rotated regularly. This will both support the operation and give valuable experience to other branches around the country.

During the recovery phase, the PRC will set up 'hub' offices to manage the bulk of the work that will need to be carried out, while thoughtfully identifying the complementary role of the branches. The intention is to ensure that branches have stronger capacity at the close of the operation without subjecting them to the trauma of a dramatic scale up and scale down.

Branch development activities are being planned by the PRC's Organizational Development (OD) department for the local branches as the recovery phase begins. This will involve branch assessments, volunteer training and materials to support the recovery operation and increase branch capacity during and after the operation.

The disaster management capacity of PRC's local branches in the areas targeted by the programme will be further strengthened in order to manage and coordinate better disaster management and disaster risk reduction (DRR) initiatives. The branches will be supported with formation and the strengthening of NITs through training sessions. These NIT training sessions will include branch staff, volunteers as well as officials from local authorities. The branches will be supported with NIT kits, early warning communication and preparedness equipment. In addition to building up the PRC's NIT capacity, two NIT refresher training courses will also be conducted at the national level with the participation of volunteers from across the country. These NITs are currently responding to the floods, and it is

important to keep growing and maintaining this capacity within the PRC. In to ensure preparedness for future disasters, this plan also intends to purchase and pre-position select contingency relief stocks of the IFRC for 1,000 families in country.

Taking into account that municipal elections were held in November 2015, it is key to ensure communication with government institutions at different levels, to maintain close coordination and avoid challenges due to staff rotation in local municipalities and ministries. This is based on lessons learned from past operations (Floods 2014).

### **Disaster Law**

The IFRC is deploying a member of its Disaster Law Programme to provide support on the customs process. The operation in Paraguay will also support ongoing efforts to strengthen the current legal framework for disaster management and response in line with the Disaster Law Guidelines and the Checklist for Law and Disaster Risk Reduction. The PRS and the IFRC have been working closely on DRR, as well with other key partners such as the UN to support the government of Paraguay in its efforts to strengthen its national disaster management laws and procedures. Any emerging regulatory issues in relation to disaster law, DRR or shelter can be incorporated into these ongoing efforts, and there will be coordination between the ongoing work and the work on this emergency plan of action (EPoA).

### **Gender, diversity and protection**

Gender, diversity and protection issues will be mainstreamed into this operation while considering the mass displacements and temporary accommodation of evacuees in displaced-persons facilities. Other areas of focus will include gender-based violence (GBV), child protection and working to combat the social exclusion of some groups of people based on their ethnic background, which may be exacerbated in a time of emergency when social connections become weaker.

Mainstreaming of gender, diversity and protection issues will also ensure that the psychosocial interventions are context appropriate and that accountability lines are in place for GBV response and prevention. A concerted effort will be made to identify, advocate and plan ways to address ethnically-based discrimination. There will be endeavour to capture gender and age disaggregated data for the purpose of understanding the number and specific vulnerabilities of females to males based on their gender roles and age.

Other lessons learned from past operation point towards understanding the specific needs and tailored support required by mobile or migrant populations in the affected area in the intervention design. It is essential to take into account the cultural characteristics of target populations with different ethnical backgrounds for the sensitization activities. Within the framework of an emergency response intervention, the support from sociologists or anthropologists must be implemented from the beginning in order to obtain better results not only in the hygiene promotion area but also to ensure sustainability of actions

### **Community engagement and accountability**

The PRC has a long history of working and communicating with affected communities, including the response to last year's flooding.

Additionally, the IFRC will advocate for beneficiary communications activities, and community accountability and feedback/response mechanisms will be integrated into response and recovery programmes to ensure that affected populations have direct access to information on the nature and scope of services provided by the PRC and processes that will enable community participation and feedback. These services will be implemented through context-specific channels, including mass communication, such as mainstream media, telephone and print media, including Q&A print-outs, flyers and posters, ODK, and face to face options through social mobilization.

## **Target population**

### **San Pedro**

The target population is composed of affected households that entered into a situation of vulnerability after the floods, which caused the partial or complete loss of their belongings, dwellings, crops and large and small livestock, as well as the sources of raw materials for brick production and construction (clay and sand). Serious damage has occurred to the availability and access to food, which are the two pillars of food security.

The following table details the number of households per district in San Pedro that the Paraguayan Red Cross, with IFRC support, plans to reach with this operation:

Affected districts	Total households per district	Total people per district
San Pedro De Ycuamandyú	509	2,545
Antequera	303	1,515
Villa del Rosario	123	615
Chore	110	550
<b>TOTAL</b>	<b>1,045</b>	<b>5,225</b>

## Asunción

Collective centres in Bañado have been prioritized for intervention because they have not received the same coverage as other collective centres in Bañado Sur; furthermore, as part of the IFRC's participation in the Sectorial Water Panel and the organization of the response along with other actors, this zone has been designated a Paraguayan Red Cross area of intervention. The vulnerability and precariousness of Bañado Norte collective centres at the social level is characterized by a lack of coordination and community-organizing actions due to the forced displacement of the population caused by the floods. The IFRC intends to meet the needs of the 2,214 families in the 38 collective centres.

Collective Centre	Affected families	Total # of people
Cancha Humaita	48	240
Gas corona	166	830
Laguna Pyta	102	510
Faenamiento del Ejercito	140	700
Seccional Sub 28	40	200
Vereda Hogar San Vicente	92	460
Insfran	50	250
Inglaterra	120	600
Dublin e Indias	167	835
Ex Noticias	39	195
Via Ferrea (Zucolillo)	44	220
Sander	21	105
Aromita	10	50
Empo	85	425
Plaza Japon	186	930
Vereda UCA	90	450
EMPOPAR	166	830
Silvio Petirrossi(atrás)	50	250
Japon'i	28	140
Silvio Petirrossi(japon)	18	90
Cancha Silvio Petirrossi	60	300
Caracolita	20	100
Altos y Dublin	50	250
Calle Villarica	16	80
Ex Azucarera	9	45
Maria Auxiliadora	21	105
Nuevo Hogar	51	255
Sander	23	115

Ex diario noticias	39	195
San Miguel	52	260
Santa Cruz	32	160
Barrail	9	45
3 de mayo	26	130
CONFAR	24	120
Zucolillo	44	220
8 de junio	12	60
Vecindad del Chavo	10	50
Puerto Cacupemi	54	270
<b>Total</b>	<b>2,214</b>	<b>11,070</b>

### Ñeembucú

In Ñeembucú, most collective centres and alternatives to the collective centres are located Pilar; however, the damage in terms of water and sanitation and livelihoods is mostly in coastal towns, where the heavy rainfall has cut entire communities off from food supplies.

Affected districts	Total households per district	Total people per district
Pilar	180	900
Albertí	645	3,225
Villavalbin	112	560
Mayor José de Jesús	316	1,580
Cerrito	400	2,000
<b>TOTAL</b>	<b>1,653</b>	<b>8,265</b>

### Vulnerability and beneficiary selection criteria

The Paraguayan Red Cross Society has established the following selection criteria:

- Priority will be given to the rural and semi-urban areas most affected by the floods.
- People with the highest level of vulnerability, which includes women heads of households, older adults, children and persons with disabilities.
- Damage to homes.
- Damage to the availability and access to food (food security) and thus to livelihoods.
- Families incommunicado and who lack means of transportation.
- In livelihoods, priority is given to assistance for agricultural farmers, day labourers and fisher folk

The identification of affected households for the final selection of beneficiaries (and details on the level of impact) plans to consider the selection criteria and vulnerability that was used at the time the detailed assessment was conducted. The communities of San Pedro del Ycuamandyu, Antequera, Chore and Villa del Rosario were selected because they had not yet received government assistance unlike the other affected communities. Likewise, the Baño del Norte area in Asunción will be prioritized due to the vulnerability of its collective centres. For the population in Ñeembucú, the main priority is to meet the needs of sheltered people in Pilar and respond to the difficulty in accessing drinking water in Alberdi, Villavalbin, Mayor Jose and Cerrito. Another aspect to consider is that the population living in rural areas has been affected primarily in terms of livelihoods.

### Operational support services

#### Human resources

The head of this operation will be responsible for the Disaster Risk Management and Reduction Unit, which will coordinate with the departmental EOC in San Pedro and be under the supervision of the Directorate for Risk Management, Community Health and Social Inclusion. At the local level, the project will hire a coordinator who will be

responsible for coordinating and implementing local-level activities, working with communities and the inclusion of PRC branch volunteers in order to strengthen coordination in the target area. All of these people will have IFRC insurance. An administrative-financial assistant will also be hired for this operation. Support for dedicated local staff is informed by lessons learned from past emergency operations which highlighted the added value of having a person responsible for administrative, financial and logistical functions in the field dedicated fully to the operation and maintain permanent communication with the affected communities and local authorities.

Personal protective gear will be provided to PRC's volunteers including rubber boots, rain ponchos, vests and shirts. The operation will fund the following team:

- 1 General Coordinator (10 months)
- 4 Sector coordinators (8 months): Water and Sanitation, Livelihoods, PSS and preparedness.
- 1 Communications coordinator (8 months)
- 1 Driver (8 months)
- 2 Field coordinators (10 months)

Two water and sanitation and livelihoods general Regional Intervention Teams (RITs) will be deployed for three months by the IFRC in order to support the operation.

### **Logistics and supply chain**

All procurements and procedures will be conducted at the national level in accordance with the National Society's procedures and in compliance with the IFRC's standard policies and procedures. A vehicle will be rented in the area of San Pedro to transport project personnel to the field and to coordinate the feasibility of supporting local arrangements for river travel, contributing to the fuel costs incurred by these actions. A 4-wheel drive vehicle is expected to be acquired in light of the poor conditions of the access roads to rural areas and the limited number of National Society vehicles. The Global Logistics Unit will support Appeal procurement processes, and will also provide support to purchase water bladders and filters and the 4-wheel drive vehicle.

### **Information technologies (IT)**

The Paraguayan Red Cross will have computers and telecommunications equipment available for the operation and it will use ODK for data collection and Mega V for the distributions

### **Communications**

Through its head of communications, the PRC has begun informing the population about the situation where the adverse events are taking place, as well as about the assessments that are underway. The Press Section under the San Pedro departmental EOC will also support communication actions.

The operation will include the following activities:

- Develop, in conjunction with IFRC communications, a web/press release on the Paraguayan Red Cross DREF operation and gather quotes from operational/technical staff, volunteers, and beneficiaries. It will be published at the following link: [www.ifrc.org](http://www.ifrc.org) disseminated over the PRC's and the IFRC's social networks.
- Draft releases for the web and a report on good practices in the cash transfer programme and communication with beneficiaries.
- Prepare a case study on communications with beneficiaries and the tools used, including the satisfaction survey.
- Video and photo coverage of the operations / Beneficiary stories
- A communications plan will be prepared to respond to the emergency.

The following are the links that have been published:

Spanish:

<http://www.ifrc.org/es/noticias/noticias/americas/paraguay/cruz-roja-paraguaya-responde-a-inundaciones-masivas/>

English:

<http://www.ifrc.org/en/news-and-media/news-stories/americas/paraguay/paraguayan-red-cross-responds-to-massive-flooding-70805/>

External relations, resource mobilization and humanitarian diplomacy

Proactive and effective engagement with a range of external and internal partners, including government departments, donor agencies, the UN system, non-governmental organizations (NGOs), community groups and multilateral banks, if appropriate, are a critical part of this operation. Given the critical, longstanding permanence of the population in the collective centres, which are in the most seriously flood-affected region in Paraguay, monitoring humanitarian issues, especially around protection, humanitarian access and sexual and gender-based violence, will be a priority. The IFRC will work closely with the PRC and the ICRC to ensure emerging issues are identified in time and appropriate responses are developed. It is critical to ensure ongoing funding, proper positioning of the IFRC and the fulfilment of the IFRC's obligation to advocate on behalf of vulnerable people through a wide range of forums and platforms hosted by external parties

## Security

The Paraguayan Red Cross Society has a document on National Security Policies and Procedures and field intervention.

Paraguayan Red Cross's Societies security standards aim to reduce risks when performing institutional tasks in the field through the application of actions and practices that provide timely, quick, effective and safe responses for the most vulnerable people.

There are no significant security problems in the targeted area. Those that exist are related to the mobilization of volunteers and the resources for implementing the activities.

An appointed person is responsible for determining the human resources needed for any group engaging in the action, particularly the actions in the field. This will be done in consideration of:

- The possibility of underage PRC volunteers participation with proper permission from their parents and/or guardians and the president of the PRC branch in Concepción.
- General knowledge of all institutional areas.
- Good health, fitness, maturity, self-control, ability to assess a situation under duress, determination and proven experience.

## Planning, monitoring, evaluation, & reporting (PMER)

PRCS with the support of IFRC is responsible for the planning, monitoring and evaluation, and reporting (PMER) aspects of this operation. Local branches carry out day-to-day monitoring of the operation in the field, while the headquarters, especially disaster management department, supervises and monitors the activities of the local branches in line with the EPoA. The PRCS PMER team, supported by IFRC PMER team, will be responsible for drafting operation updates and pledge-based reports in close consultation with disaster management and other concerned departments.

The project will include the following mechanisms for monitoring, evaluation and reporting:

- An Operation Update 30 days after the start of operation and updates every 2 months.
- Disaggregated beneficiary data will be prioritized
- A beneficiary satisfaction survey.
- A final narrative report
- A lessons learned workshop
- A final evaluation of the operation will be conducted.

The regional disaster management coordinator of South America will visit the field, with support from IFRC's Americas regional office. The IFRC Disaster Risk Management and Reduction unit will ensure that the National Society conducts regular monitoring of activities. A PMER workshop will be also be held with National Society staff members.

## Administration and Finance

The PRC will be responsible for managing the in-country funds in accordance with the IFRC's standard procedures for reporting on operational progress. Transfers will be made based on the provisions in the letter of agreement signed between the Paraguayan Red Cross and the IFRC for the implementation of the operation.

The IFRC, through its finance department, will provide the necessary operational support for the review and validation of budgets and bank transfers, as well as the provision of technical assistance to the National Society on procedures for the justification of expenditures and the review and validation of invoices on the operation's progress.

## C. DETAILED OPERATIONAL PLAN

### Health and Care

**Needs analysis:** To date, no injuries have been reported in relation to the flooding or secondary events. No probable outbreaks of diseases or epidemics have been detected. However, people have been treated for diarrhoea, respiratory diseases, dermatitis and colds, among others. The affected people in Asunción require first aid care because of injuries and the occasional electric shocks they sustained while setting up their own emergency collective centres.

A psychosocial support line needs to be activated due to the high degree of emotional impact observed during the field assessment. The population is experiencing uncertainty and emotional upheaval due to the loss of their homes, sources of income, which is exacerbated by the time required for recovery.

**Population to be assisted:** At least 4,912 affected families in San Pedro, Asunción and Ñeembucú are assisted based on their health promotion, PSS and first aid needs.

OBJECTIVES	INDICATORS											
<b>Outcome 1: The immediate risks to the health of 4,912 affected families are reduced in San Pedro, Asunción and Ñeembucú</b>	% of the affected people in the area who can access appropriate health promotion											
<b>Output 1.1 Community-based disease prevention and health promotion is provided to 4,912 affected families who have information and materials in San Pedro, Asunción and Ñeembucú</b>	Number of people diagnosed and receiving psychosocial support											
<b>Activities</b>	<b>Month</b>											
	<b>1</b>	<b>2</b>	<b>3</b>	<b>4</b>	<b>5</b>	<b>6</b>	<b>7</b>	<b>8</b>	<b>9</b>	<b>10</b>	<b>11</b>	<b>12</b>
Design and printing of materials	X	X										
Community health promotion sessions	X	X	X	X	X	X	X	X	X	X		
Dissemination of key messages for social media	X	X	X	X	X	X	X	X	X	X		
<b>Output 1.2 4,912 affected families in San Pedro Asunción and Ñeembucú feature psychosocial support.</b>	No of people diagnosed and who received PSS											
<b>Activities</b>	<b>Month</b>											
	<b>1</b>	<b>2</b>	<b>3</b>	<b>4</b>	<b>5</b>	<b>6</b>	<b>7</b>	<b>8</b>	<b>9</b>	<b>10</b>	<b>11</b>	<b>12</b>
Design and printing of materials	X	X										
Psychosocial campaign	X	X	X	X	X	X	X	X	X	X		
Referral system for people requiring psychological care	X	X	X	X	X	X	X	X	X	X		
<b>Output 1.3 4,912 affected families in Asunción provided with first aid care.</b>	No. of people receiving first aid care											
<b>Activities</b>	<b>Month</b>											
	<b>1</b>	<b>2</b>	<b>3</b>	<b>4</b>	<b>5</b>	<b>6</b>	<b>7</b>	<b>8</b>	<b>9</b>	<b>10</b>	<b>11</b>	<b>12</b>
Purchase of first aid supplies	X	X										
First aid treatment received	X	X	X	X	X	X	X	X	X	X		

### Water, sanitation and hygiene promotion

**Needs analysis:** Water storage and handling have been affected by the floods, as well as by the improper handling of the containers used for this purpose. In San Pedro, the affected people with (completely or more than 50 per cent) flooded homes have lost their household belongings, including personal hygiene items. Other people have been out of contact due to the floods and they also require these supplies. In the case of Asunción, drinking water is provided by ESSAP; however, the water is not being properly stored or used because of the precariousness of these

temporary housing facilities. In Ñeembucú, damage to the water system and water sources such as wells and rivers and the isolation of the communities caused by the flooding are affecting the most vulnerable populations.

This assistance needs to be supplemented by a hygiene, water care and water and sanitation campaign. These hygiene kits will contain:

- 5 toothbrushes
- 5 tubes of toothpaste
- 5 combs
- 5 hand towels
- 5 500ml-bottles of shampoo
- 10 bars of bath soap
- 5 bars of laundry soap
- 10 sanitary napkins
- 10 rolls of toilet paper
- 5 razors
- 5 40-litre trash bags

**Population to be assisted:** A total of 4,912 affected families in San Pedro, Asunción and Ñeembucú are assisted based on their health promotion needs and through the provision of hygiene kits, water filters, jerrycans and water distributions.

OBJECTIVES		INDICATORS											
<b>Outcome 2</b> The immediate reduction of water related diseases in 4,912 affected families the target population in San Pedro, Asunción and Ñeembucú		Mortality and morbidity rates in affected areas											
<b>Output 2.1</b> Hygiene promotion activities, which meet Sphere standards, are provided to the entire 4,912 affected families in San Pedro, Asunción and Ñeembucú		Number of people reached with hygiene promotion. Number of PRC volunteers involved in hygiene promotion activities Number of people that increase their knowledge of personal hygiene											
Activities	Month	1	2	3	4	5	6	7	8	9	10	11	12
Hygiene promotion activities, including workshops, in the affected communities		X	X	X	X	X	X	X	X	X	X		
Survey on hygiene conditions in the affected communities to define the intervention strategy		X	X										
Implementation of a Participatory Hygiene And Sanitation Transformation (PHAST) workshop to volunteers in San Pedro and Ñeembucú		X				X							
Tender process for acquisition of hygiene kits		X											
Selection of provider		X											
Distribution and delivery of 600 hygiene kits to communities in San Pedro, and 2,214 hygiene kits to CHT's in Asunción.		X	X										
Maintenance and repair of 15 sanitary units already set up in the collective centres and the establishment of 20 additional ones in Asunción.		X	X										
Acquisition of two pumps to extract water, along with accessories(15 m <sup>3</sup> /h) for Ñeembucú		X											
OBJECTIVES		INDICATORS											
<b>Output 2.2.</b> Daily access to safe water which meets Sphere and World Health Organization (WHO) standards in terms of quantity and quality is provided to 2,814 households in San Pedro, Asunción and Ñeembucú		Number of households that receive 20-litre jerrycans for water storage											
Activities	Month	1	2	3	4	5	6	7	8	9	10	11	12
Tender process for acquisition of 20-litre jerrycans (1,200 in San Pedro, 4,428 in Asunción and 2016 in Ñeembucú)		X											
Selection of provider		X											
Distribution of two 20-litre jerrycans		X	X										
OBJECTIVES		INDICATORS											

<b>Output 2.3</b> 1,953 affected families of Ñeembucu benefit from safe water through the Red Cross's distribution system and purification (bladders, and water filters) and 2,214 affected families in Asunción benefit with chlorine tablets.	Number of beneficiaries with access to safe water through Red Cross distribution and storage systems												
	Number of filters that are distributed												
	Number of jars of chlorine tablets that are distributed												
<b>Activities</b>	<b>Month</b>	<b>1</b>	<b>2</b>	<b>3</b>	<b>4</b>	<b>5</b>	<b>6</b>	<b>7</b>	<b>8</b>	<b>9</b>	<b>10</b>	<b>11</b>	<b>12</b>
Acquisition and installation of 4 units of 5,000-litre bladders for affected families in Ñeembucú for water distribution		X	X	X	X								
Distribution of drinking water		X	X	X	X	X	X	X	X	X	X		
Acquisition and distribution of water filters for affected families in Ñeembucú		X	X	X									
Acquisition and distribution of chlorine tablets in Asunción.		X	X	X									

## Foods security, nutrition and livelihoods

**Needs analysis:** Local production sectors, such as agriculture, livestock, fishing, and day labour, have been seriously and negatively affected by this emergency, which has directly impacted families' finances, access to products and food security.

The weather forecast for the next few months indicates that more precipitation will fall, which will cause waters to rise and prevent people from engaging in their livelihood activities and obtaining access to food. Consequently, this basic need has the potential of not being met, which might only worsen with the continual rise of water levels.

Support for the population's food security, availability and access, is required; this support will focus on levels of vulnerability and selection criteria developed during the detailed assessment.

The proposal includes providing one food kit per family, considering the fact that local economy relies on fishing, day labour, agriculture and brick production, which have been significantly affected. As immediate recovery of livelihoods is not possible, this population requires support for their daily sustenance. The food kits will contain:

- 3 kg of sugar
- 5 kg of flour
- 5 kg of beans
- 5 kg of the mate herb (for a traditional beverage)
- 5 kg of noodles
- 2 kg of rice
- 5 litres of cooking oil
- 1 kg of salt

The affected population who lost their crops, animals and field tools will be able to secure financial resources through the implementation of a cash transfer programme (CTP) to reactivate their livelihoods.

The distribution of voucher will be based in a market study on specific needs and suppliers that reach the list of major products identified in the study. The beneficiaries will place their order (including seeds, veterinary products, tools and small animals). Once the supplier has the order, it will provide these products to recipients in the area.

**Population to be assisted:** A total of 2,053 affected families in San Pedro and Ñeembucú are assisted based on their needs through two food kits per family, which are in accordance with Sphere standards, and are able to secure resources to reactivate their livelihoods through the cash transfer programme and strengthen their livelihoods. Agricultural farmers', day labourers' and fisher folks' households will be included as they cannot reactivate their livelihoods until they receive the cash transfer. In order to improve households' resilience, they will be supported on the implementation of livelihoods protection activities such as the improvement of infrastructure to protect livestock, seed and food (e.g. seeds/food bank, establishing safety areas to move livestock or build stables, protected spaces for poultry)

The National Society has both the experience and the trained personnel for implementing the cash transfer programme developed in 2015 during the storm operation.

OBJECTIVES	INDICATORS
<b>Outcome 3:</b> 2,053 affected families in San Pedro and Ñeembucú receive a monthly food kit for two months to support food security.	Number of affected people receiving basic subsistence food products.
<b>Output 3.1:</b> 2,053 families receive food kits	Number of food kits distributed.
Activities	Month
Beneficiary identification and selection	X
Tender process to select providers	X
Provider identification and selection	X
Distribution and monitoring through the Mega V system.	X X
OBJECTIVES	INDICATORS
<b>Outcome 4:</b> 2,053 families have reactivated their livelihoods and agricultural production in San Pedro and Ñeembucú and have more resilient livelihoods	Number of families reactivating their livelihoods. Number of families implementing at least 1 practice to protect their livelihoods
<b>Output 4.1:</b> 2,053 families receive funding through the cash transfer programme to reactivate their livelihoods	Number of vouchers registered and used according to procedures established for the CTP
Activities	Month
Conduct a market study/identification and selection of programme suppliers	X
Training for families on how to use the CTP	X
Implementation of the CTP programme for 1,045 families in San Pedro and 1,008 families in Ñeembucú.	X X X X
<b>Output 4.2:</b> 2,053 families improve their capacities to protect their livelihoods	Number of families who participate in training sessions Number of families who receive advice on how to protect their livelihoods
Activities	Month
Conduct a market study/identification and selection of programme suppliers for tools and materials to be delivered to beneficiaries.	X
Training for families on livelihoods protection actions	X X X
Accompaniment for families in livelihoods protection activities to be implemented	X X X

## Shelter

**Needs analysis:** Rains have caused damage in several areas in the capital city of Asunción, especially to dwellings along the banks of the city's main rivers. To date, 131 temporary housing centres (temporary collective centres) have been set up, housing 13,197 families. Many have set up their own accommodations in unsuitable areas with their own materials or those provided by the authorities. These makeshift shelters lack light, are overcrowded and the electric power has been improperly set up.

Pilar currently has 11 evacuation centres (with bathrooms, drinking water, electricity, cement flooring and permanent roofs) housing 73 families. To date, 336 families have been evacuated; however, 78 per cent of the evacuated families are not staying in evacuation centres, but in the homes of relatives, neighbours, or vacant lots in the neighbourhood as social ties are very strong.

**Population to be assisted:** The distribution of tool kits in the collective centres will allow 2,394 families affected by flooding in Asunción and Ñeembucú to improve their living spaces, as their capacity to enhance them is limited by their lack of resources.

OBJECTIVES	INDICATORS
<b>Outcome 5:</b> 2,394 families affected by flooding in Asunción and Ñeembucú improve their emergency housing conditions.	Number of families who improve their emergency housing conditions
<b>Output 5.1</b> 2,394 families affected by flooding in Asunción and Ñeembucú have basic materials with which to improve their emergency housing conditions	Number of emergency kits delivered
Activities	Month
	1 2 3 4 5 6 7 8 9 10 11 12

Conduct a market study/identification and selection of programme suppliers	X												
Training for families on how to use the CTP		X	X										
Implementation of CTP for 2,214 affected families in urban areas in Asunción and 180 affected families living in collective centres in Ñeembucú		X	X	X									
Acquisition and distribution of returning home kits		X	X	X	X	X	X	X	X	X			

## Disaster preparedness and risk reduction

**Needs analysis:** In recent years, climate change and population growth have affected vulnerable populations living along the banks of major rivers in Paraguay. This is a recurring situation that exceeded historical ranges in 2014 and 2015. This situation primarily affects low-income families who are most exposed in urban areas, while in rural areas it is the families who engage in subsistence farming and livestock breeding.

During the latest flood-related emergencies, it has been necessary to strengthen and support the local coordination response through training and the provision of basic equipment for the operation, as well as planning for preparedness and risk reduction.

The Paraguayan Red Cross, through its auxiliary role to the State, will support and guide the strengthening process at the local level. In this regard, it is also essential to strengthen the National Society's preparedness capacity.

**Population to be assisted:** At least 4,912 families in San Pedro, Asunción and Ñeembucú are prepared to respond to additional flooding through family and community organizing and coordination with local authorities and response institutions.

OBJECTIVES	INDICATORS												
<b>Outcome 6:</b> The communities of San Pedro, Asunción and Ñeembucú are prepared and resilient enough to respond to flooding through proper coordination with local authorities.	Number of prepared communities Number of prepared municipalities												
<b>Output 6.1</b> Families, communities and municipalities at risk of flooding have the required level of preparedness to respond to the emergency and reduce their risks.	Number of local contingency plans Number of Vulnerability and Capacity Assessment (VCAs) conducted Number of prepared families Number of prepared brigades Number of Municipal EOCS in operation												
Activities	Month	1	2	3	4	5	6	7	8	9	10	11	12
VCA training workshops for local staff						X							
Vulnerability and Capacity Assessment for the community						X							
Prepared families workshop for local staff							X						
Preparation of family response plans							X	X					
Strengthening of municipal EOCS						X	X	X					
Design and preparation of contingency plans before the flooding at the local and community level							X	X	X	X	X		
Early warning system workshops for local staff and authorities								X					
Training for community brigades									X	X			
Equipping of community brigades										X	X		

## National Society's Institutional Preparedness and Capacity Building

**Needs analysis:** The response to the floods will put pressure on the capacity of PRC and demand the scaling up of staffing and other organizational components. Therefore, the need to allocate substantial resources to strengthen the institutional preparedness capacity of the National Society's branches involved in the response is vital. Since volunteers are the backbone of Red Cross service-delivery capacity, branches involved in the response will be supported on the enhancement of their volunteer recruitment and management capacity. Branches whose office buildings have been damaged by the floods will be supported on the repair and the rehabilitation of critical workspaces. Furthermore, the branches will be supported on the improvement of their capacity to deliver health

services in emergencies. Lastly, the PRC will be supported on the enhancement of its institutional disaster response capacity through the training of emergency response teams (both local and national level NIT) and the pre-positioning of stock.

<b>Outcome 7:</b> The Paraguayan Red Cross capacity to deliver on programmes and services in future disasters strengthened	Number of response and contingency plans Number of EOCs in operation
<b>Output 7.1</b> National and local PRCS response teams are prepared to respond to floods and emergencies	Number of prepared branches Number of volunteers trained and prepared
<b>Activities</b>	<b>Month</b>
	<b>1 2 3 4 5 6 7 8 9 10 11 12</b>
Design and preparation of the response plan	
Design and preparation of a contingency plan for floods	
Strengthening of headquarters and branch EOCs	
EOC course for National Society staff and volunteers	
<b>Output 7.2</b> PRC branches in the flood-affected states and regions have improved volunteer management capacity	Number of local contingency plans Number of newly recruited volunteers Number of volunteers trained
<b>Activities</b>	<b>Month</b>
	<b>1 2 3 4 5 6 7 8 9 10 11 12</b>
Undertake recruitment and orientation of volunteers (Red Cross teams)	
Provide branch staff with training in volunteer management	
<b>Output 7.3</b> PRC emergency response capacity of staff and volunteers is strengthened	Number of volunteers prepared in refresher trainings Number of volunteers trained and prepared as a NIT members
<b>Activities</b>	<b>Month</b>
	<b>1 2 3 4 5 6 7 8 9 10 11 12</b>
Courses led by General and WatSan National Intervention Team	
Epidemics Control course for volunteers	
<b>Output 7.4</b> PRC branches in the flood-affected local and regions have improved facilities	Number of prepared branches Number of volunteers trained and prepared
<b>Activities</b>	<b>Month</b>
	<b>1 2 3 4 5 6 7 8 9 10 11 12</b>
Renovate damaged office building(s)	
Provide boats for transport and rescue purposes	
Provide essential office equipment to branches	
<b>Output 7.5</b> PRC relief response capacity is strengthened by the pre-positioning of contingency relief stocks	Amount of pre-positioned stock
<b>Activities</b>	<b>Month</b>
	<b>1 2 3 4 5 6 7 8 9 10 11 12</b>
The National Society has IFRC pre-positioned stock in the country for 1,000 families	

## Quality programming / Areas common to all sectors

OBJECTIVES	INDICATORS
<b>Outcome 8</b> Continuous and detailed assessment and analysis are used to inform the design and implementation of the operation.	Number of assessments conducted
<b>Output 8.1</b> Initial needs assessment are updated following consultation with beneficiaries.	Assessment reports that indicate consultation with beneficiaries ( <i>assessment reports, plan of action</i> )  Assessment reports that provide data on affected population disaggregated by sex, age and vulnerabilities ( <i>assessment reports</i> )
<b>Output 8.2</b> The management of the operation is informed by a comprehensive monitoring and evaluation system	Plan of action and sectorial plans with a monitoring and evaluation plan  Planned evaluations that include lessons learned and a managerial response

Output 8.3 Mechanisms are in place to facilitate two-way communication with and ensure transparency and accountability to disaster-affected people	Number of press releases issued Number of beneficiary stories completed Number of media publications on PRC actions Number of National Society personnel that are recruited												
Activities	Month	1	2	3	4	5	6	7	8	9	10	11	12
Emergency rapid assessment by branches, national Headquarters and IFRC	X												
Prepare a multi-sectorial plan of action	X												
Perform a detailed assessment of damage to communities (including potential rapid assessments if forecasted floods scenario in February/March materialised)	X	X	X	X									
Hiring of National Society personnel (general coordinator, health, PSS, livelihoods and communications)	X	X											
Mobilization of RITs (General, water and sanitation, and Livelihoods)		X	X	X									
Monitoring of the operation by IFRC			X			X				X			
Beneficiary satisfaction survey									X	X			
Lessons learned workshop												X	
Final evaluation of the operation												X	
Development of an emergency communications plan	X												
Prepare and disseminate press releases and beneficiary stories	X	X	X	X	X	X	X	X	X	X	X		
Video and photo coverage of the operation / Beneficiary stories	X	X	X	X	X	X	X	X	X	X	X		

## Contact Information

**For further information specifically related to this operation please contact:**

### In the Paraguayan Red Cross:

- Ing. Carlos Escobar Goiburu, President in functions of the Paraguayan Red Cross, email: [presidencia@cruzroja.org.py](mailto:presidencia@cruzroja.org.py)

### In the IFRC Americas regional office:

- Iñigo Barrena, Pan-American Disaster Response Unit (PADRU) coordinator, email: [c.i.barrena@ifrc.org](mailto:c.i.barrena@ifrc.org); mobile: +507 6679 3238

### In Geneva

- Christine South, operations quality assurance senior officer; +41 22 730 45 29; [christine.south@ifrc.org](mailto:christine.south@ifrc.org)

### For Resource Mobilization and Pledges:

- Alejandra Van Hensbergen, senior relationship management officer; email: [alejandra.vanhensbergen@ifrc.org](mailto:alejandra.vanhensbergen@ifrc.org)

### For In-Kind donations and Mobilization table:

- Douglas Baquero, Head of Zone Office Logistics Unit - Global Logistics Service; email: [douglas.baquero@ifrc.org](mailto:douglas.baquero@ifrc.org)

### For Performance and Accountability (planning, monitoring, evaluation and reporting enquiries):

- Priscila Gonzalez; planning, monitoring and reporting team coordinator; email: [priscila.gonzalez@ifrc.org](mailto:priscila.gonzalez@ifrc.org)

Click [here](#) to return to the title page, [here](#) to view the budget and [here](#) for the map of affected areas.

**Annex 1:****Content of Returning Home Kits**

1 pair	Leather gloves
1 unit	Wire brush
1 unit	Paintbrush
25 kg	Lime
4 Litres	Detergent
4 units	Strong plastic sacks
12 units	Plastic bags
1 unit	Shovel
1 unit	Rake
1 unit	Bucket

# APPEAL OPERATION

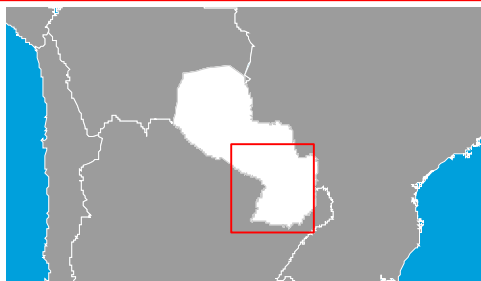
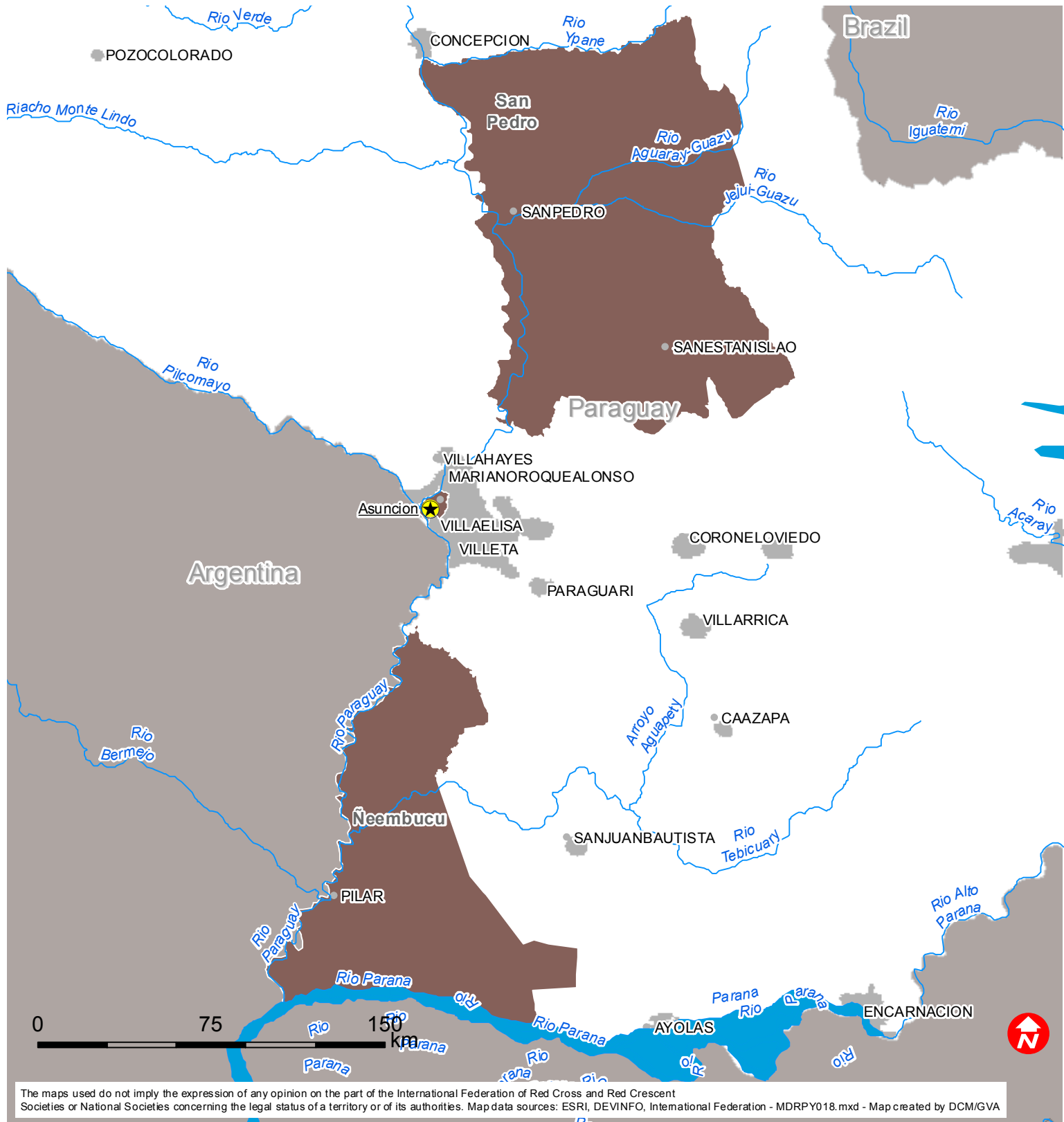
27/01/2016

## MDRPY018 - Paraguay Floods

Budget Group	Multilateral Response	Inter-Agency Shelter Coord.	Bilateral Response	Appeal Budget CHF
Shelter - Relief	88,027			88,027
Shelter - Transitional	0			0
Construction - Housing	0			0
Construction - Facilities	0			0
Construction - Materials	0			0
Clothing & Textiles	0			0
Food	183,659			183,659
Seeds & Plants	0			0
Water, Sanitation & Hygiene	187,187			187,187
Medical & First Aid	17,917			17,917
Teaching Materials	145,659			145,659
Ustensils & Tools	37,990			37,990
Other Supplies & Services	141,703			141,703
Emergency Response Units	0			0
Cash Disbursements	605,278			605,278
<b>Total RELIEF ITEMS, CONSTRUCTION AND SUPPLIES</b>	<b>1,407,420</b>	<b>0</b>	<b>0</b>	<b>1,407,420</b>
Land & Buildings	0			0
Vehicles Purchase	60,733			60,733
Computer & Telecom Equipment	0			0
Office/Household Furniture & Equipment	19,880			19,880
Medical Equipment	0			0
Other Machinery & Equipment	0			0
<b>Total LAND, VEHICLES AND EQUIPMENT</b>	<b>80,612</b>	<b>0</b>	<b>0</b>	<b>80,612</b>
Storage, Warehousing	19,741			19,741
Distribution & Monitoring	34,228			34,228
Transport & Vehicle Costs	48,705			48,705
Logistics Services	30,114			30,114
<b>Total LOGISTICS, TRANSPORT AND STORAGE</b>	<b>132,788</b>	<b>0</b>	<b>0</b>	<b>132,788</b>
International Staff	29,820			29,820
National Staff	0			0
National Society Staff	94,659			94,659
Volunteers	21,510			21,510
Other Benefits Staff	7,455			7,455
<b>Total PERSONNEL</b>	<b>153,444</b>	<b>0</b>	<b>0</b>	<b>153,444</b>
Consultants	16,401			16,401
Professional Fees	4,970			4,970
<b>Total CONSULTANTS &amp; PROFESSIONAL FEES</b>	<b>21,371</b>	<b>0</b>	<b>0</b>	<b>21,371</b>
Workshops & Training	53,675			53,675
<b>Total WORKSHOP &amp; TRAINING</b>	<b>53,675</b>	<b>0</b>	<b>0</b>	<b>53,675</b>
Travel	12,922			12,922
Information & Public Relations	39,759			39,759
Office Costs	37,274			37,274
Communications	14,313			14,313
Financial Charges	1,988			1,988
Other General Expenses	0			0
Shared Support Services	2,060			2,060
<b>Total GENERAL EXPENDITURES</b>	<b>108,317</b>	<b>0</b>	<b>0</b>	<b>108,317</b>
Programme and Supplementary Services Recovery	127,246	0	0	127,246
<b>Total INDIRECT COSTS</b>	<b>127,246</b>	<b>0</b>	<b>0</b>	<b>127,246</b>
<b>TOTAL BUDGET</b>	<b>2,084,871</b>	<b>0</b>	<b>0</b>	<b>2,084,871</b>
<b>Available Resources</b>				
Multilateral Contributions				0
Bilateral Contributions				0
<b>TOTAL AVAILABLE RESOURCES</b>	<b>0</b>	<b>0</b>	<b>0</b>	<b>0</b>
<b>NET EMERGENCY APPEAL NEEDS</b>	<b>2,084,871</b>	<b>0</b>	<b>0</b>	<b>2,084,871</b>



# Paraguay: Floods



 Targetted provinces