

www.ifrc.org
Saving lives,
changing minds.

Emergency Appeal Guatemala: Drought

 International Federation
of Red Cross and Red Crescent Societies

Appeal no. MDRGT009

12,000 people (2,000 families) to be assisted

Appeal launched 5 February 2016

Glide no. DR-2015-000150-GTM

245,273 Swiss francs DREF allocated

Appeal ends 4 January 2017

2,037,059 Swiss francs Appeal budget

Timeframe 12 months

This Emergency Appeal seeks a total of **2,037,059** Swiss francs (CHF) to enable the International Federation of Red Cross and Red Crescent Societies (IFRC) to support the **Guatemalan Red Cross (GRC)** to deliver assistance and support to some drought affected **12,000 people (2,000 families)**, with a focus on **food security, livelihoods, nutrition, and water, sanitation and hygiene promotion**. The planned response reflects the current situation and information available at this point of the evolving operation, and will be adjusted based on further developments and more detailed assessments.

Details are available in the Emergency Plan of Action (EPoA) [<click here>](#)

The disaster and the Red Cross Red Crescent response to date

Mid-2015 to early 2016: The ongoing El Niño phenomenon worsens existing drought conditions, affecting 110,000 families in Guatemala's dry corridor.

4 November 2015: CHF 245,273 allocated from the IFRC's Disaster Relief Emergency Fund (DREF) to support the execution of assessments and the delivery of assistance.

5 January 2016: Emergency Appeal launched for CHF 2,037,059 to reach 12,000 vulnerable people (2,000 families).



Photo 1. A GRC visit to an affected community – Source: GRC

The operational strategy

Needs assessment and beneficiary selection:

1. Food Security and Livelihoods:

The 2015 drought caused extensive crop loss, with families reporting crop losses of 50 per cent and more. In addition to the drought, families use inadequate planting, harvesting and soil conservation practices. Due to the crop losses, corn and bean crops in particular, it is estimated that only 35 per cent of families will still have some limited food reserves by May 2016, while 64.8 per cent will have exhausted their reserves by April 2016. If

weather forecasts for 2016 come to pass and no adequate technical assistance is provided, agricultural production will not improve and families will suffer drought effects for the third year in a row.

In total, 64 per cent of families in Chiché and Patzité municipalities stated that agricultural activities are their main source of income; 93.4 per cent of surveyed households engage in agriculture and other livelihoods include occasional non-agricultural activities such as trade, house work, wage labour, self-employment, support from relatives and the manufacturing of textiles. After the drought, the number of families that reported that their main source of income was "agricultural activities" dropped by almost 20 per cent, and the number who claimed that their income came mainly from the "sale of agricultural production" dropped by 6.6 per cent.

2. Health and Nutrition:

Due to the changes in food consumption, there is an increased risk of acute malnutrition in children less than five years of age. In order to identify these cases and provide timely assistance, a screening of the nutritional status of children between the ages of 6 and 60 months was conducted in November 2015, using average mid-upper arm circumference measurements and the World Health Programme (WHO)'s new growth curve standard as established in the Sphere Manual.

3. Water, sanitation and hygiene promotion:

In general, families expressed that water sources have remained the same despite the drought affecting the region. It is estimated that nearly 45 per cent of families have drinking water delivered over the public network (28.8 per cent inside the home and 15.8 per cent to basins); however, 22 per cent still get their water from rivers and springs. Only one of the households surveyed has an irrigation system to ensure adequate crop growth.

Beneficiary selection: Response actions will be conducted in 15 communities in the municipality of Chiché and in 2 communities in Patzité. At the request of local Ministry of Public Health and Social Welfare authorities, these communities were selected based on the food insecurity predicted for October to December 2015, through coordination with the Quiche Area Directorate and the districts of Patzité and Chiché districts and results from the rapid assessment and the operational capacity of the Guatemalan Red Cross.

Families will be selected/prioritized based on the following criteria:

- Families for which 60 per cent of livelihoods depend on corn crops
- Households with total or partial crop loss (bean and corn)
- Households led by single mothers
- Households made up of many family members
- Households with elderly dependents
- Households with children under five and/or pregnant women
- Households with disabled members
- Families with acutely malnourished children

Table of Beneficiaries

Municipality	Community	Families	People
Chiché	Tzalamabaj II	150	1,050
	Chupoj III	116	812
	Membrilla I	130	910
	San Juan	51	357
	Los Gonzalez	71	497
	Charon	43	301
	Rincon L2	24	168

	Laguna Seca II	170	1,190
	Tuluiche I	200	1,400
	Tuluiche IV	150	1,050
	Carrizal	192	1,344
	Choyomche I	98	686
	Choyomche II	175	1,225
	Choyomche III	75	525
	San Francisco	125	875
	SUBTOTAL	1,770	12,390
Patzite	Pazajcap	62	434
	Chuicojonop	168	1,176
	SUBTOTAL	230	1,610
Total		2,000	14,000

Operational strategy

Overall objective: The overall objective of this operation is that 12,000 people (2,000 families) affected by the drought in communities in Chiché and Patzité in the department of Quiché in Guatemala receive emergency and recovery support through food security, nutrition, livelihoods and water and sanitation activities.

Specific Objectives

- Provide food to affected families while conducting soil preparation, crop restoration, and water source protection actions
- Restore and protect the livelihoods of 12,000 people (2,000 families) as a continuation of DREF actions implemented in the department Quiché
- Provide systems to harvest water for home consumption and small home gardens to 100 households
- With the Ministry of Public Health and Social Welfare, contribute to restoring the nutritional status of children under two living in targeted communities.



Photo 2. Food parcels distribution by GRC – Source: GRC

Proposed sectors of intervention




Coordination and partnerships



The actions that are being developed to deal with the food and nutritional insecurity situation affecting the population living in the dry corridor will be implemented directly by the Guatemalan Red Cross and its staff and volunteers, with support from the IFRC and as per the institutional response plan. Close communications will be maintained with Movement representatives in the country (IFRC, the International Committee of the

Red Cross [ICRC], Partner National Societies [PNSs]) for both the programming of activities and accountability and resource management. During the DREF's implementation, the GRC will maintain close communications with IFRC representatives in the region as well as with the Pan American Disaster Response Unit (PADRU).

The humanitarian team has activated the food security, agriculture, nutrition and water, sanitation and hygiene (WASH) cluster/sectors to carry out a preliminary identification of potential humanitarian needs. The situation analysis and initial response actions are coordinated by the Drought Response Board, which is led by the Secretariat of Food and Nutritional Security (SESAN for its acronym in Spanish), and the Ministry of Agriculture Livestock and Food (MAGA for its acronym in Spanish). In August, the United Nations Children's Fund (UNICEF) and the World Food Programme (WFP), together with World Vision, Plan International, CARE, National Centre for Information and Research on Development and Disaster (CENACIDE for its acronym in Spanish) and Action against Hunger, initiated actions to perform a nutritional sweep in the eastern dry corridor in order to detect and treat severe acute malnutrition cases.

 Food Security and Livelihoods
Outcome 1. Immediate food needs of the disaster affected population (2,000 families) are met.
Output 1.1. Appropriate food rations are distributed to 2,000 vulnerable households (12,000 people).
Activities planned: <ul style="list-style-type: none"> • Identify and register affected families using a mobile data collection tool (ODK) • Procure food kits • Deliver food kits • Conduct a beneficiary satisfaction survey
Outcome 2: Livelihoods are restored among targeted population.
Output 2.1 Productive assets are replaced and retained by 2,000 families.
Output 2.2. Information regarding better knowledge, skills and practices for restoring livelihoods is provided and used by the targeted groups.
Activities planned: <ul style="list-style-type: none"> • Identification of affected families using ODK • Processes to purchase inputs and seed • Purchase of inputs and seed • Distribution of inputs and seed • Technical assistance for planting and soil management and protection • Technical assistance for grain processing and storage • Hiring of an agronomist • Base line • Livelihood training for volunteers
Outcome 3: Contribute to prevention and monitoring of acute malnutrition in children under five from families affected by food and nutrition insecurity.
Output 3.1: Identification and timely referral of children under five with acute malnutrition, as well as improvement in child feeding practices.
Activities planned: <ul style="list-style-type: none"> • Education and training to community-level nutritional surveillance committee aimed at leaders. • Community Nutritional Surveillance • Referral of acute malnutrition cases with complications to health services • Home visits to follow up malnutrition cases with no complications • Coordination with the Minister of Health • Hiring of a nutrition technician for 6 months • Reproduction of educational materials (reproduction of flipcharts and posters) • Educational sessions for 600 families (mothers) on feeding and nutritional practices • Training for 56 community leaders on feeding and nutritional practices • National Disaster Response Team (NDRT) training for volunteers supporting the field activities



Water, Sanitation and Hygiene Promotion

Outcome 4. Contribute to improved access to, storage, and handling of water through rain harvesting and protection of water sources in selected communities.

Output 4.1 Construction of home rain harvesting systems for 1,000 families.

Output 4.2 Hygiene promotion activities are provided to the entire affected population.

Output 4.3 Promote organized community actions to protect water flows and maintain water systems.

Activities planned:

- Printing of educational material
- Implementation of Participatory hygiene and sanitation transformation (PHAST) methodology
- Establishment of agreements with communities to implement actions to protect water flows and sources
- Implementation of actions to protect water flows and sources and harvest rainwater
- Construction of home water harvesting systems
- Hiring of a water and sanitation technician



Quality programming/Areas common to all sectors

Outcome 5. Continuous and detailed assessment and analysis is used to inform the design and implementation of the operation.

Output 5.1 The management of the operation is informed by a comprehensive monitoring and evaluation system.

Output 5.2 Operation activities are disseminated at the local, national and regional levels.

Activities planned:

- Hiring of operational staff and staff to support the operation in the field
- Community assemblies to present the project
- Monitoring visits
- Progress reports on the affected communities
- Documentary on activities
- Beneficiary satisfaction survey
- Lessons learned workshop
- Development of beneficiary stories
- IFRC monitoring
- Identify and implement a complaint mechanism

€ Budget

See attached IFRC Secretariat budget for details.

Garry Conille
Under Secretary General
Programmes and Operations Division

Elhadj As Sy
Secretary General

Reference documents



Click here for:

- [Previous DREF bulletin](#)
- [Emergency Plan of Action \(EPoA\)](#)

Contact Information

For further information specifically related to this operation please contact:

In the Guatemala:

- ✓ Guatemalan Red Cross: Daniel Javiel, general director, phone: +502 2381-6565; email: direcciongenceral@cruzroja.org.gt
- ✓ Marissa Soberanis, country coordinator for Guatemala and El Salvador, phone: +502 5508-7026, email: marissa.soberanis@ifrc.org

In the IFRC Americas regional office, Panama (+507 317-3050):

- ✓ Carlos Inigo Barrena, disaster response and crisis and early recovery coordinator; email: ci.barrena@ifrc.org.
- ✓ Stephany Murillo, regional senior logistics and mobilization officer; email: stephany.murillo@ifrc.org
- ✓ Priscila Gonzalez, planning, monitoring and reporting team coordinator; email: priscila.gonzalez@ifrc.org
- ✓ Diana Medina, communications coordinator; email: diana.medina@ifrc.org
- ✓ **For resource mobilization and pledges:** Alejandra Van Hensbergen, relationship management senior officer; email: alejandra.vanhensbergen@ifrc.org

In IFRC Geneva:

- ✓ Cristina Estrada, quality assurance senior officer, phone: +41.22.730.4529, email: cristina.estrada@ifrc.org

How we work

All IFRC assistance seeks to adhere to the **Code of Conduct** for the International Red Cross and Red Crescent Movement and Non-Governmental Organizations (NGO's) in Disaster Relief and the **Humanitarian Charter and Minimum Standards in Humanitarian Response (Sphere)** in delivering assistance to the most vulnerable. The IFRC's vision is to inspire, **encourage, facilitate and promote at all times all forms of humanitarian activities** by National Societies, with a view to **preventing and alleviating human suffering**, and thereby contributing to the maintenance and promotion of human dignity and peace in the world.

The IFRC's work is guided by Strategy 2020 which puts forward three strategic aims:



Save lives,
protect livelihoods,
and strengthen recovery
from disaster and crises.



Enable **healthy**
and **safe** living.



Promote **social inclusion**
and a culture of
non-violence and **peace.**

EMERGENCY APPEAL

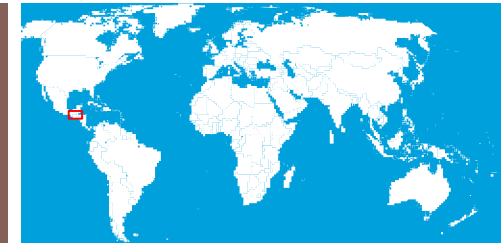
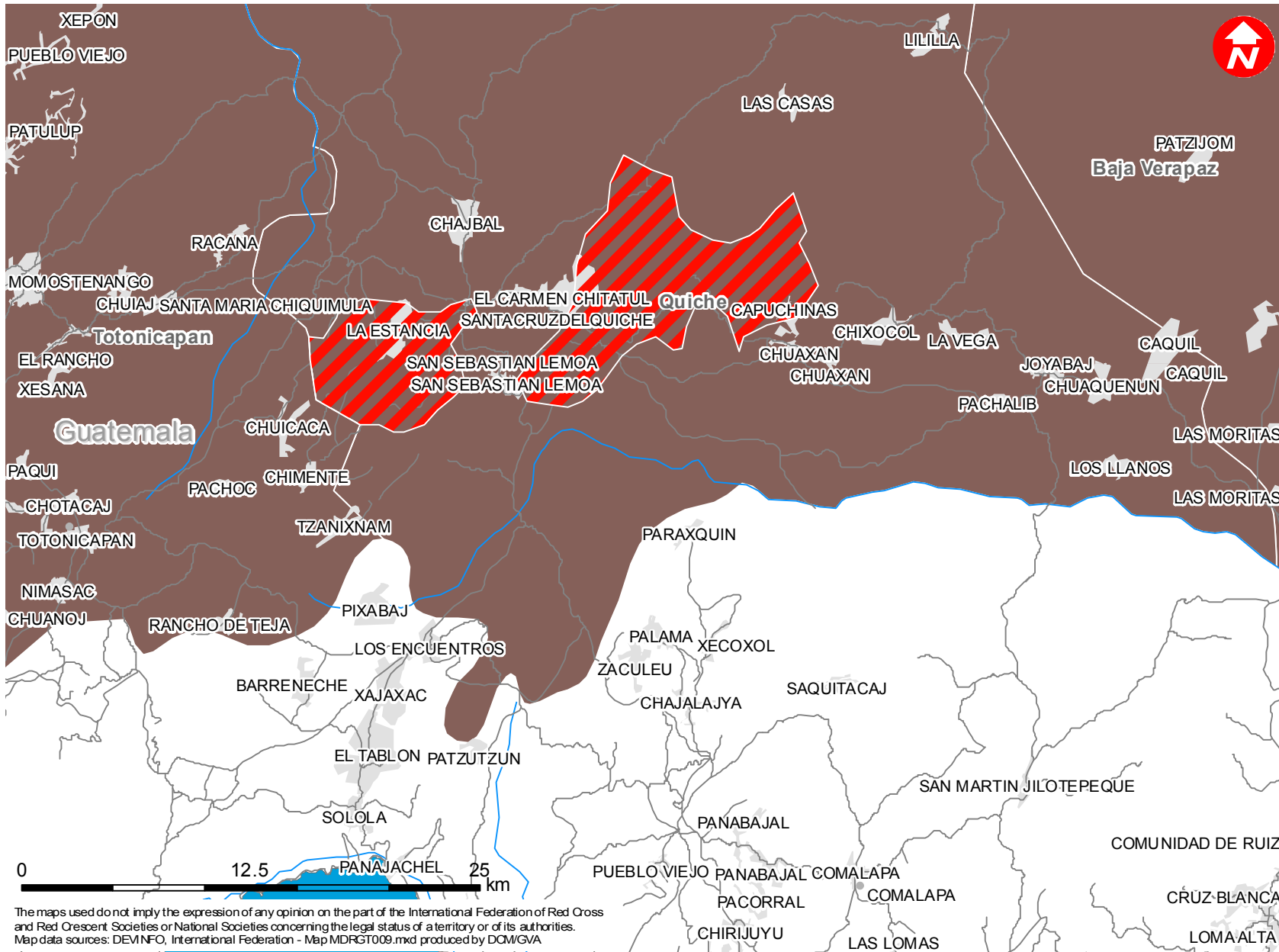
MDRGT009 Guatemala Drought



05/02/2016

Budget Group	Multilateral Response	Inter-Agency Shelter Coord.	Bilateral Response	Appeal Budget CHF
Shelter - Relief	0			0
Shelter - Transitional	0			0
Construction - Housing	0			0
Construction - Facilities	0			0
Construction - Materials	0			0
Clothing & Textiles	0			0
Food	681,455			681,455
Seeds & Plants	100,214			100,214
Water, Sanitation & Hygiene	818,748			818,748
Medical & First Aid	802			802
Teaching Materials	37,380			37,380
Utensils & Tools	100,214			100,214
Other Supplies & Services	0			0
Emergency Response Units	0			0
Cash Disbursements	0			0
Total RELIEF ITEMS, CONSTRUCTION AND SUPPLIES	1,738,811	0	0	1,738,811
Land & Buildings	0			0
Vehicles	0			0
Computer & Telecom Equipment	0			0
Office/Household Furniture & Equipment	0			0
Medical Equipment	0			0
Other Machinery & Equipment	0			0
Total LAND, VEHICLES AND EQUIPMENT	0	0	0	0
Storage, Warehousing	0			0
Distribution & Monitoring	0			0
Transport & Vehicle Costs	12,687			12,687
Logistics Services	10,021			10,021
Total LOGISTICS, TRANSPORT AND STORAGE	22,708	0	0	22,708
International Staff	0			0
National Staff	7,006			7,006
National Society Staff	69,533			69,533
Volunteers	18,386			18,386
Other Staff Benefits	0			0
Total PERSONNEL	94,926	0	0	94,926
Consultants	7,015			7,015
Professional Fees	0			0
Total CONSULTANTS & PROFESSIONAL FEES	7,015	0	0	7,015
Workshops & Training	24,653			24,653
Total WORKSHOP & TRAINING	24,653	0	0	24,653
Travel	4,009			4,009
Information & Public Relations	3,107			3,107
Office Costs	4,710			4,710
Communications	7,516			7,516
Financial Charges	2,505			2,505
Other General Expenses	0			0
Shared Office and Services Costs	2,772			2,772
Total GENERAL EXPENDITURES	24,618	0	0	24,618
Partner National Societies	0			0
Other Partners (NGOs, UN, other)	0			0
Total TRANSFER TO PARTNERS	0	0	0	0
Programme and Services Support Recovery	124,328	0	0	124,328
Total INDIRECT COSTS	124,328	0	0	124,328
Pledge Earmarking & Reporting Fees				0
Total PLEDGE SPECIFIC COSTS	0	0	0	0
TOTAL BUDGET	2,037,059	0	0	2,037,059
Available Resources				
Multilateral Contributions				0
Bilateral Contributions				0
TOTAL AVAILABLE RESOURCES	0	0	0	0
NET EMERGENCY APPEAL NEEDS	2,037,059	0	0	2,037,059



Guatemala: Drought



-  Beneficiaries
-  Affected Departments

The maps used do not imply the expression of any opinion on the part of the International Federation of Red Cross and Red Crescent Societies or National Societies concerning the legal status of a territory or of its authorities.
 Map data sources: DEVINFO, International Federation - Map MDRGT009.mxd produced by DCM/GVA