

www.ifrc.org
Saving lives,
changing minds.

Emergency Plan of Action

Serbia: Flash floods

 International Federation
of Red Cross and Red Crescent Societies

DREF Operation n° MDRRS012	Glide n° FL-2016-000025-SRB
Date of issue: 7 April 2016	Expected timeframe: 6 April – 6 June 2016 (two months)
Operation manager (responsible for this EPoA): Ruben Romero, Disaster Management Coordinator phone: +36 1 888 4500 email: ruben.romero@ifrc.org IFRC Secretariat Regional Office for Europe	Point of contact (name and title): Djula Losonc, Disaster Management Coordinator phone: +38163380735 email: djula@redcross.org.rs Red Cross of Serbia
DREF assistance allocated: CHF 41,876	
Total number of people affected: 7,000	Number of people to be assisted: 3,600
Host National Society presence: 261 staff and 503 volunteers from 9 branches of the Red Cross of Serbia along with the staff of Headquarters	
Other partner organizations actively involved in the operation: local and international NGOs, local Centers for Social Work; the Ministry of Interior: Network of Public Health Institutes.	

A. Situation analysis

Description of the disaster

Heavy rainfalls occurred in the western part of Serbia on 6-7 March 2016, which caused the Western and Southern Morava rivers to spill over. A state of emergency was declared in the municipalities of Arilje and Lučani since the rivers Bjelica and Moravica inundated local roads, residential buildings and other infrastructures such as factories and schools.

As a result of continuous rains, further flooding affected other areas of the country, bringing a number of municipalities to declare a state of natural disaster on 8 March. In those municipalities where a state of emergency was declared about 710 households were flooded and 154 people were evacuated.

Pozega municipality declared a state of emergency on 6 March due to flash flooding caused by the spill-over of the rivers Skrapež, Western Morava and Moravica. The floods have affected seven villages and the outskirts of the local community Tatojevica. In the northern part of the municipal territory at least six villages were left without electricity for several hours. The municipality has a total of 29,488 inhabitants, of which nearly 5,000 have been affected. At least 100 households have been flooded and approximately 1,000 hectares of farmland has been also affected. The flash floods caused landslides, and at least thirty families had to be evacuated and temporarily accommodated with relatives and friends.



Relief distribution in the village of Sirca by Kraljevo RC branch volunteers.
Photo: Red Cross of Serbia

After heavy rainfalls on 6 March, there was a sudden rise of water levels on the river Bjelica next morning, which caused severe floods in the territory of Lucani municipality, the basin of the river Bjelica, Guca, Turica, Puh Krstac, Đerađ, Dljin and Lucani, with strong impact to about 70 -100 houses (approx. 450 residents) and about 500 hectares of farmland.

On the same day the city of Kraljevo declared an emergency due to flooding which occurred the previous day. The first estimates indicated that more than 140 houses have been flooded while more than 4,000 people have been affected. As a result of flooding in the next 24 hours, 413 persons were evacuated, of whom only thirty persons were relocated to the collective centre, i.e. the building of the local primary school. During the very first hours after the floods, the employees and volunteers of the Red Cross branch of Kraljevo assisted those people some of whom have found temporarily shelter with their closest relatives and friends. The local Red Cross branch conducted a rapid needs assessment, followed with the immediate distribution of essential relief items to the most vulnerable families. Water supply tanks were deployed by the Public Utility Company and the Serbian Army, while the Red Cross of Serbia provided three tanks of 1,500 liters each. UNHCR provided 9,000 litres of bottled drinking water from its warehouse stocks for the pupils of the schools and preschools. The flooded areas in Cacak municipality involved the villages of Konjevići and Prejlina where 420 people have been evacuated. The rivers Trnavice and Jošanice in Novi Pazar flooded the entire local community of Trnava. Cleaning of the flooded houses started with the help of the Serbian Army supported by the affected residents and volunteers immediately after the water receded. In the municipalities of Raska, Trstenik and Bajina Basta the floods were less destructive, affecting between 20-30 households per municipality.

Summary of the current response

Overview of Host National Society

After a rapid assessment done on 7 March by the RC branch secretaries and members of National Disaster Response Teams, the Red Cross of Serbia sent in its first relief assistance to help the people affected by the floods in the following municipalities: Lučani, Čačak, Arilje and Pozega. The relief assistance consisted of food, personal hygiene items and disinfectants with a total weight of 11,000 kg.

With this RC delivery, 480 flood-affected families in those four municipalities have been assisted. Shortly after that, a second shipment was dispatched for the most affected residents in Kraljevo, Trstenik and Bajina Basta consisting of food, hygiene kits and other urgent supplies. At the request of the Bajina Basta emergency headquarter, a 30 KVa generator has been sent to the municipality to bypass an electric power failure in the affected village. Following the withdrawal of water in Novi Pazar, 15 dehumidifiers were delivered to the most affected households to start the recovery process. The National Team for Water Search and Rescue was on alert with 90 volunteers for possible engagement in case of further needs. During the emergency response period, based on the Republican Emergency HQ's request to assist the search and rescue forces of the city of Zajecar, the Zajecar Red Cross branch and the Red Cross of Serbia National Team for Rescue and Evacuation the have been mobilized and sent to Zajecar due to the possible flooding risk on the river Timok.

The breakdown of distributed goods from NS stock during the response operation is found in the below table.

Items	Lučani	Čačak	Arilje	Pozega	Novi Pazar	Raska	Kraljevo	Trstenik	Bajina basta	TOTAL
Unit	pcs.	pcs.	pcs.	pcs.	pcs.	pcs.	pcs.	pcs.	pcs.	
Family food parcels	70	230	130	50	200	30	270	30	100	1,110
Family hygiene parcels	70	230	130	50	200	30	270	30	100	1,110
Disinfectants	100	280	150	50	200	30	270	30	100	1,210
Blankets	30		0	0	0	0	0	0	132	162
Rubber boots	0		20	10	40	0	0	0	0	70
Wheat flour	1,000	2,000	1,000	750	1,500	500	2,000	500	1,000	10,250
Socks	0		0	0	400	60	600	50	0	1,110
Mattresses	20		0	0	0	0	0	0	0	20
Bottled water 1.5 l							9,000			9,000
Rain coats							1,000			1,000
Shoes for adults							400			400
Hygiene gel 50 ml							400			400

RCS equipment engaged									TOTAL
Water tanks 1,500 l							3		3
Generators 30 kWA								1	1
Dehumidifiers	10	10	10	10	15	0	0	0	55

On 30 March, in accordance with the needs expressed by the Red Cross branches, final aid delivery was sent to the population affected by floods in the municipalities of Lučani, Čačak, Novi Pazar, Raška, Kraljevo and Gornji Milanovac.

Items	Unit	Lučani	Čačak	Novi Pazar	Raška	Kraljevo	Ub	Total
Family package hygiene (UNICEF)	pcs.	80	130	280	30	150	30	700
Disinfectant	litres	50	150	300	30	200	60	790
Raincoats (UNHCR)	pcs.	160	260	600	60	0	60	1,140
Hygienic gel 50ml (UNHCR)	pcs.	80	130	280	30	80	0	600
Fruit jam 400gr	pcs.	80	130	280	30	170	30	720
Tea leaves in a box	pcs.	320	520	1,120	120	600	120	2,800
Instant soup in a bag	pcs.	560	910	1,960	210	1,050	210	4,900

The RC delivery consisted of food, personal hygiene products, disinfectants and raincoats with a total weight of 10,000 kg.

In total, over 1,110 families have received support from the Red Cross of Serbia in this emergency response operation.

Overview of Red Cross Red Crescent Movement in country

The Red Cross of Serbia has a great experience in mobilizing volunteers in disasters, with the aim of assisting people in need, implementing relief distributions, organizing basic disaster response and first aid. Each Red Cross branch has a disaster response team trained in a wide range of activities. The National Society is maintaining a solid disaster response stock which enables its DM department to intervene during the first hours of any disaster. The Red Cross of Serbia has ample knowledge in managing and organising humanitarian assistance in handling population movements too. From 1992 till 1999 more than 1 million refugees were received in Serbia, and most of them were assisted by the RC of Serbia.

The National Society is working very closely on information monitoring and follow up with the disaster management team at the IFRC Regional Office for Europe in Budapest, Hungary.

The Tracing Service of the Red Cross of Serbia has been also active in disaster response, working closely with the ICRC Delegation and the ICRC's Coordinator in Belgrade for RFL issues and forensic services.

Overview of non-RCRC actors in country

The municipalities affected by the floods have been organizing emergency evacuations with the assistance of the Sector for Emergency Management and the Red Cross of Serbia where needed. The Government of Serbia has alerted all emergency services to assist the residents affected by flash floods.

All Red Cross activities have been coordinated with the Department for Emergency Situations of the Republic of Serbia. Operational Headquarters of the Government of Serbia introduced duty work around the clock in the most critical days, and the Red Cross of Serbia was part of that. Municipal commissions were established, which went out



Distribution of relief items in Cacak.
Photo: Red Cross of Serbia

to determine how badly the buildings, the farmlands and the road infrastructure were damaged. The Department for Emergency Situations was coordinating imminent preparedness measures and disaster response.

Needs analysis, beneficiary selection, risk assessment

Beneficiary selection

Beneficiary selection has been agreed in cooperation with the emergency headquarters of the affected municipalities, and the list of those in need has been cross-shared in the local meetings of the Emergency HQ. In the course of the flood-related operations, the Red Cross of Serbia (RCS) addressed the needs of the most vulnerable nine municipalities mostly in the western part of Serbia. The RCS anticipated the need to deploy a certain number of RCS teams for disaster response with the task to engage wall dehumidifiers in order to help people in moving back to their houses.

The field assessment teams and trained RCS field personal at the RC branches identified the following needs of the affected population: emergency food distribution including canned food for those evacuated and temporarily sheltered to support their nutrition needs while the people, up to 1,100 families, are out of their homes. Three water tanks, 1,500 litres each, were placed in the closest locations to people's houses as to support their urgent water needs until the public water system was restored. The assistance was soon followed by the distribution of hygiene parcels and other non-food items (rubber boots and raincoats) as identified during the field visits. The following week after the floods, wall dehumidifiers, in total 55 pieces, were sent from the RCS's disaster preparedness stocks to five municipalities Lucani, Cacak, Pozega, Arilje and Novi Pazar and have been put at the beneficiaries' disposal until 30 April 2016.



Dehumidifier being used in Novi Pazar.

Photo: Red Cross of Serbia

B. Operational strategy and plan

Overall objective

The immediate needs of at least 1,110 families (approx. 3,600 people) in the areas affected by flash floods are met with the Red Cross disaster response team's assistance through emergency evacuations, distribution of food and non-food items, and house cleaning by pumping out water and drying wet walls.

Proposed strategy

To accomplish the overall objective, the Red Cross staff and volunteers focused on the provision of emergency food distribution and water supply during evacuations to meet the immediate needs of the affected population in nine municipalities: Arilje, Pozega, Lucani, Bajina Basta, Cacak, Novi Pazar, Raska, Trstenik and Kraljevo.

Another primary goal was to improve the beneficiaries' access to sanitation through the provision of hygiene kits and hygiene promotion for women, men and children, taking into consideration the size of the family.

With this DREF allocation, the Red Cross of Serbia will replenish food items at the National Society so that they would be prepared for an eventual next emergency in the future. Hygiene parcels and non-food items will be replenished with the assistance of domestic partners and in-country donors.

The planned activities are as follows.

- Distribution of family hygiene parcels with the following contents to 1,110 families from the NS's contingency stock

Nr.	Item	Unit	Amount
1.	Washing powder 3/1 kg	pcs.	1
2.	Hair shampoo 1/1 lit	pcs.	1
3.	Soap 200 gr	pcs.	4
4.	Toilet paper	rolls	4
5.	Toothpaste	pcs.	2
6.	Toothbrushes	pcs.	4
7.	Shaving foam	pcs.	1
8.	Razors disposable	pcs.	4
9.	Sanitary napkins	package	2
10.	Dishwashing liquid 1/1 lit	pcs.	1

- Distribution of 10 kg family food parcels with the following contents to 1,110 families from the NS's contingency stock for a family of four or three persons with 7-day supplies

Nr.	Item	Unit	Amount
1.	Sliced meat 150 g	pcs.	15
2.	Pâté 150gr	pcs.	7
3.	Fish in cans 125 gr	pcs.	7
4.	Ready-to-eat meal 300 gr	pcs.	12
5.	Tea leaves	box	1
6.	Soup dried	pcs.	5
7.	Wheat flour	kg.	10
8.	Cardboard packaging	pcs.	1

- Distribution of non-food items including rubber boots, raincoats, shoes, blankets, mattresses, socks, disinfectant, etc. as identified by the detailed assessment of RCS teams in the field.

Operational support services

Human resources

The total number of staff and volunteers involved in implementation of this operation was 764.

This operation was implemented by 9 RC branches including Arilje, Pozega, Lucani, Bajina Basta, Cacak, Novi Pazar, Raska, Trstenik and Kraljevo. As the local capacities of the implementing branches are limited, the Red Cross of Serbia mobilized volunteers and staff from the NS HQ including mobilization of the National society National disaster response teams where needed.

Logistics and supply chain

All the items will be procured locally in accordance with the IFRC procurement procedures. Provision of fuel for RC teams transport and distribution of humanitarian assistance is included in the DREF budget.

Communications

The Red Cross of Serbia posted two DMIS updates and regular updates on its Facebook page about the activities carried out in this operation.

Security

Due to the flash floods and in a few places the damaged infrastructure, the possibility for the volunteers to get injured in rescue or evacuation activities is higher than usual, and the RC staff and volunteers will receive proper briefing before moving to the field in order to be informed about risks in flooded areas. All disaster response volunteers of the National Society have had first aid training or basic disaster management training.

Planning, monitoring, evaluation, & reporting (PMER)

The Red Cross of Serbia and the IFRC Regional Office for Europe monitored the implementation of activities. Brief weekly updates were provided by the National Society to the IFRC on the general progress of the operation.

Administration and Finance

National Society and IFRC Secretariat operational administrative support and office costs are included in the operational budget.

Budget

Click [here](#) to see the budget of the DREF operation.

Contact information

For further information specifically related to this operation please contact:

Red Cross of Serbia

- Vesna Milenovic, Secretary General
phone: +381 11 30 32 125; email: secretary@redcross.org.rs
- Djula Losonc, Disaster Management Coordinator;
phone: +38163380735; email: djula@redcross.org.rs

IFRC Regional Office for Europe

- Mette Petersen, Head of Country Cluster
phone:+36 1 888 4515; email: mette.petersen@ifrc.org
- Ruben Romero, Disaster Management Coordinator;
phone:+36 1 888 4500; email: ruben.romero@ifrc.org

IFRC Secretariat Geneva

Christine South, Operations Support

phone: +41.22.730.4529, email: christine.south@ifrc.org

DREF OPERATION

01/04/2016

MDRRS012 Serbia - Flash floods

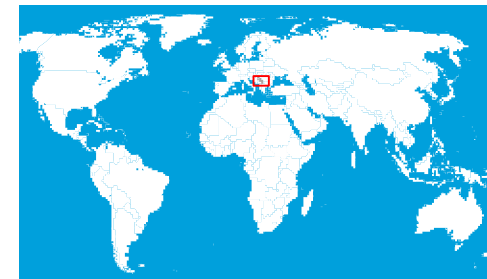
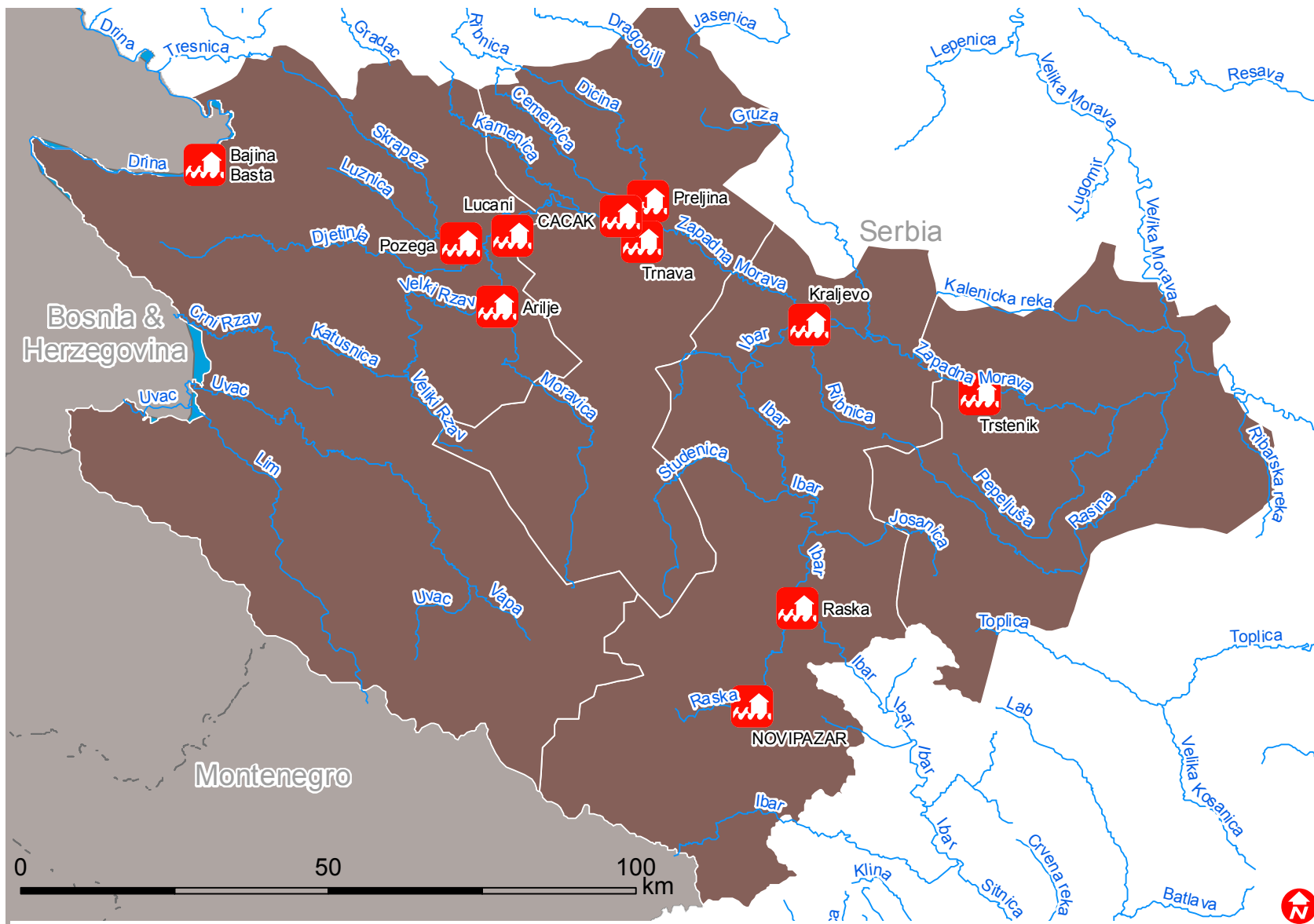
Budget Group	DREF Grant Budget CHF
Shelter - Relief	
Shelter - Transitional	
Construction - Housing	
Construction - Facilities	
Construction - Materials	
Clothing & Textiles	
Food	35,520
Seeds & Plants	
Water, Sanitation & Hygiene	
Medical & First Aid	
Teaching Materials	
Utensils & Tools	
Other Supplies & Services	
Cash Disbursements	
Total RELIEF ITEMS, CONSTRUCTION AND SUPPLIES	35,520
Land & Buildings	
Vehicles	
Computer & Telecom Equipment	
Office/Household Furniture & Equipment	
Medical Equipment	
Other Machinery & Equipment	
Total LAND, VEHICLES AND EQUIPMENT	0
Storage, Warehousing	
Distribution & Monitoring	
Transport & Vehicle Costs	3,000
Logistics Services	
Total LOGISTICS, TRANSPORT AND STORAGE	3,000
International Staff	
National Staff	
National Society Staff	800
Volunteers	
Total PERSONNEL	800
Consultants	
Professional Fees	
Total CONSULTANTS & PROFESSIONAL FEES	0
Workshops & Training	
Total WORKSHOP & TRAINING	0
Travel	
Information & Public Relations	
Office Costs	
Communications	
Financial Charges	
Other General Expenses	
Shared Office and Services Costs	
Total GENERAL EXPENDITURES	0
Partner National Societies	
Other Partners (NGOs, UN, other)	
Total TRANSFER TO PARTNERS	0
Programme and Supplementary Services Recovery	2,556
Total INDIRECT COSTS	2,556
TOTAL BUDGET	41,876



International Federation of Red Cross and Red Crescent Societies
Fédération internationale des Sociétés de la Croix-Rouge et du Croissant-Rouge
Federación Internacional de Sociedades de la Cruz Roja y de la Media Luna Roja
الاتحاد الدولي لجمعيات الصليب الأحمر والهلال الأحمر

MDRRS012
FL-2016-000025-SRB
7 April 2016

Serbia: Floods



Most affected places

The maps used do not imply the expression of any opinion on the part of the International Federation of Red Cross and Red Crescent Societies or National Societies concerning the legal status of a territory or of its authorities.
Map data sources: ESRI, DEVINFO, International Federation, MDRRS012.mxd - Map created by DCM/GVA