

www.ifrc.org  
Saving lives,  
changing minds.

## Emergency Plan of Action (EPoA) DRC: Gemena Floods

 International Federation  
of Red Cross and Red Crescent Societies

<b>DREF n° MDRCD019</b>	<b>Expected timeframe:</b> 3 months
<b>Date of issue:</b> 25 November 2016	<b>Expected end date:</b> 23 February 2017
<b>DREF allocated:</b> CHF 183,682	
<b>Operations manager:</b> Josuane Flore Tene, Central Africa CCST	<b>Point of contact:</b> Andrei Engstand-Neacsu
<b>Total number of people affected:</b> 2,628	<b>Number of people to be assisted:</b> 2,628
<b>Host National Society presence:</b> The Red Cross of the Democratic Republic of Congo has 26 provincial committees, 244 local committees and 60,000 active volunteers out of a total of 120,000 registered volunteers.	
<b>Red Cross Red Crescent Movement partners actively involved in the operation:</b> The IFRC is the only organisation supporting the DRC Red Cross in responding to this emergency. However, the DRC Red Cross/IFRC maintains regular contacts with, and holds regular briefings for the five Partner National Societies (PNS) present in DRC, namely Belgian, Canadian, French, Spanish and Swedish Red Cross, as well as the ICRC.	
<b>Other partner organizations actively responding:</b> UNICEF, World Vision and Local Authorities namely the Provincial Minister for Public Works.	

### A. Situation analysis

#### Description of the disaster

Since the beginning of the month of November, rains and winds have hit the town of Gemena, headquarters of the province of Sud-Ubangi. Gemena town is located 3 hours by air (979 Km) from the town of Kinshasa. with a total population of 350,511 people (source: Provincial Mayor).

On 9 November 2016, rain and violent winds intensified, causing extensive floods in the Gemena neighbourhoods located on the banks of rivers Mombonga, Sukia and Labo.

The impact of the rains and violent winds caused flash flooding, leaving seven people wounded. In response, the DRC Red Cross deployed 88 volunteers, who are on standby over the rainy season. Volunteers provided first aid to those injured and they were evacuated to the nearest health centres. An assessment by the National Society found that in total, 526 families or 2,628 people were affected by the flooding. In addition, 105 houses have been destroyed: 53 of them completely and 52 partially, while the balance of affected families, 173 families, have lost their household possessions. Four wells (out of seven) in Gemena town were contaminated with dirty rainwater and 200 household latrines, half of those available, were flooded or entirely swept away. The Gemena region is already affected by cholera (source: Direction of Disease Control, DRC Government). Assessment reports indicate that while health facilities have not been physically affected, the human resource capacities are not sufficient and the quality of facilities is lacking. There is a high risk of outbreaks due to vector and water-borne diseases. In addition, there are concerns regarding access to drinking water, sanitation, and other resources required for personal hygiene.

The flood-affected communities are principally engaged in subsistence agriculture. Most of the people affected by the flood are currently staying either with host families and friends or close to their destroyed or damaged houses.



Flooded houses in Gemena Township, Photo Credit: DRC RC

Families are sharing resources and food rations with flood-affected families, thereby stretching their modest reserves. In addition, due to contaminated water source, primarily women and girls now trek for one kilometre to the nearest water source.

The resettlement of affected families is a high priority as overcrowded living conditions could lead to risk of disease proliferation related to the lack of drinking water and insufficient sanitation infrastructure.

## Summary of the current response

### Overview of Host National Society

For the initial response, the DRC Red Cross deployed 88 Community Based Health and First Aid (CBHFA) volunteers, who provided relief assistance to families and evacuated the elderly, children and physically-challenged people to safe, flood-free sites. The wounded (in total seven people), were evacuated by DRC Red Cross volunteers to the Ville and Boukouda health centres.

These volunteers also conducted an initial damage assessment. Below is a summary of the affected population. The assessment data is forwarded to the national Disaster Management Director, based at the national headquarters in Kinshasa.

#### Summary table of affected persons

Details of the population affected by Gemena Floods	Total number of the most vulnerable families	Number of people	Response Planned
Number of affected by floods	526	2,628	These people will have access to Oral Rehydration, safe water through rehabilitated wells and community hygiene promotion and environmental sanitation
Number with partially destroyed houses	52	260	These people will have access to shelter material and NFIs plus the package above as well as door to door hygiene promotion
Number with fully destroyed houses	53	265	These people will receive the same package as above
Number lost all essential items	173	865	These people will receive NFIs as well as door to door hygiene promotion

*NFI package: 3 mosquito nets, 1 bucket, 1 jerry can, 10 pieces of soap, aqua tabs, 2 blankets, 2 sleeping mats, 1 kitchen set, 1 dignity kit, 3 tarpaulins, 1 shelter tool kit, fixings, 13 pieces of timber and 5 slats*

The Provincial Secretary of the Gemena Branch and the National Disaster Management Director regularly meet at the national headquarters to discuss the situation on the ground. Due to limited resources and equipment, the volunteers of the Gemena Branch cannot provide material assistance the flood affected people, however, they visit the these people daily, providing psychological support.

### Overview of Red Cross Red Crescent Movement in country

The Red Cross of the DRC posted information on the IFRC's Disaster Management Information System (DMIS) This information is accessible to all Movement partners. In addition, five Partner National Societies present in the DRC: the Belgian (francophone), Canadian, French, Spanish and Swedish, Red Cross Societies as is the ICRC. The Partners in country are engaged in specific support for projects and are not providing support for this intervention.

Gemena is in the Equateur region (Nord Ubangui) where activities related to the IFRC Emergency Appeal (MDRCD018) against Yellow Fever, Cholera and Measles epidemics are being implemented. In the same region, the DRC Red Cross is also conducting social mobilization for a polio vaccination campaign, though it should be noted that Gemena is not a target location for the Emergency Appeal. This DREF will be implemented as a standalone operation because the Emergency Appeal has 53% coverage and this funding has already been fully allocated and Gemena is not part of Emergency Appeal localities. The Emergency Appeal Operations Manager, Logistics Delegate and Finance Assistant will support the implementation of this operation and tools and resources, such as IEC materials, will be shared across the operations.

## Overview of non-RCRC actors in country

The local government through the Provincial Minister for Public Works and humanitarian partners (including UNICEF and World Vision, which are implementing a project on mother and child follow-up, community self-reliance and education project in Gemena) visited the disaster site to assess the damage. In response to the floods, a representative from the Provincial Ministry of Social Affairs organised a meeting on the day of the floods. A second meeting took place on Wednesday, 16 November. Officials asked for the support of the partners present at this meeting, however roles or responsibilities were not attributed. Those who participated in the meeting include the Provincial Red Cross, the UNICEF focal point, World Vision.

## Needs analysis, beneficiary selection, risk assessment and scenario planning

Affected families whose houses have been partially or totally destroyed are sheltered temporarily with neighbours and live in crowded conditions. Food is being provided by host families and neighbours. Note, the number of people per family in the DRC is quite high with at least six people in each family.

Considering this situation, there is a need for assistance in various sectors, namely:

- Emergency shelter is required for 105 families who have totally or partially lost their houses.
- First aid kits are required in case there are injuries requiring first aid. The volunteers have been working closely with *Ville and Boukouda* health centres.
- NFI are required for the 278 most vulnerable families (complete or partial loss of homes) and have loss of household items such as kitchen sets, blankets, dignity kits, treated mosquito nets, buckets and jerrycans and soap. Gemena has seven built-up water sources (no wells, no boreholes, but a traditional water source systems which are commonly used in DRC), four of these were completely destroyed during the floods and need to be rebuilt to be flood resistant.
- Safe water is an issue due to contamination of water points. Procurement of aqua tabs (water purification tablets) for household water treatment or cholera prevention. As planned, sachets of Oral Rehydration Salt (ORS) will be included in the first aid kits and volunteers will be able to use them to rehydrate people before transferring them for medical attention. Aqua tabs, rather than PUR, will be used in line with the same approach adopted by the Emergency Appeal.

Women of childbearing age will receive hygiene kits. Emphasis will be placed on gender and diversity during the implementation of activities to include people with sick family members, people living with disabilities, poor families, families with orphan and vulnerable children and stigmatized individuals etc. The community will help with the collaboration of the volunteers to identify who are the most marginalized in their community. Distributions will be made and monitoring undertaken to be mindful of these issues of diversity.

### Risk Assessment

For now, the situation could worsen if measures are not taken in a timely manner by the provincial government to build another site which is safer from floods. This is beyond the scope of the DREF, but the RDRT and Operations Manager will advocate local authorities on behalf of flood affected families.

Also, the operation will be mindful of the country's socio-political situation (elections have been postponed to 2018, which is causing tension) that could affect the schedule for the operation, both at the level of preparations and implementation. The operation plans to undertake local procurement in Kinshasa where goods are available in the local market.

### Scenario planning:

If the rains continue and no measure has been taken such as carrying out work on risk-prone sites, the situation of people currently affected by the disaster. Also, risks related to public health (including vector and water-borne diseases notably in a region currently affected by the cholera) will be higher. This operation plans to link with the ongoing Emergency Appeal for epidemic response, using resources produced under this operation, including IEC materials and community awareness approaches.

## B. Operational strategy and plan

### Overall objective

The main objective is to improve of the living conditions of 526 households affected by floods in Gemena. Support will be provided in the areas of health and care, water and sanitation and hygiene promotion, distribution of non-food items and emergency shelter to those who lost their houses.

### **Proposed strategy**

An initial assessment was conducted in Gemena by DRC Red Cross volunteers. This operation plans to assist 1,390 households (278 families) most vulnerable among with shelter and non-food items (NFIs) and reach 2,628 affected people with access to ORPs, with hygiene promotion messages and sanitation activities (clean up campaigns) as well as access to safe water through the rehabilitation of water sources.

- This DREF will provide training for volunteers on emergency shelter, distribution of non-food items, the provision of first aid, activities for sanitation and hygiene promotion, building the capacities of volunteers through refresher trainings in the areas of response to this operation (techniques for distribution, sensitisation, construction of emergency shelter).
- Shelter will be provided to 105 families. The aim would be to give them materials to enable them quickly build an emergency shelter to have a temporary shelter while waiting for more long-lasting measures. It is not clear what these measures will be at this stage, however once the operation begins, advocacy will be conducted around longer term shelter solutions. Some 10 shelter kits will demonstrate construction techniques during practical training for volunteers. This will enable volunteers learn how to build shelters and support families in the construction of emergency shelters. Also, shelter materials such as tarpaulins, nails, tacks, ropes, boards and wood, will also be distributed to 105 families.
- Emergency NFIs will be provided to 278 families. This includes, 3 mosquito nets, 1 bucket, 1 jerry can, 10 pieces of soap, 1 kitchen set, 2 blankets and 2 sleeping mats. In addition, 1 dignity kits will be distributed for each woman of child-bearing age. Women account for about 18% of the total population of the people who are most vulnerable. Kits will contain a tooth brush, toothpaste, a packet of sanitary pads, a bar of soap, and a pair of underwear.
- Two first aid kits will be made available to the five teams of volunteers in case there are injuries requiring first aid.
- The volunteers will be train on shelter, distribution techniques as well as health and hygiene promotion and awareness raising. The trainers will brief the volunteers on Oral Rehydration Points (ORP) use and management techniques, and the volunteers will explain it to the community during the outreach activities, showing them how to locally produce ORS themselves.
- Rehabilitation of four traditional water points. This involves building edges around the well using cement, iron bars, loose stones or gravel to build a protective wall so that these sources are contaminated. To ensure safe drinking water, aqua tabs will be distributed for a duration of three months. In addition, three teams of volunteers will undertake environmental clean-up campaigns of flood affected areas using sanitation kits. Sanitation and hygiene promotion activities will address disease outbreaks:
  - Sanitation kits (soft brushes, rakes, hoes, wheels barrows, bleach, boots, gloves, masks) will be distributed among teams of volunteers undertaking sanitation activities in the affected areas. These items will not be distributed to the community, but will be returned to the local headquarters of the Gemena Branch. Among these sanitation materials, provision has been made for one protective masks per volunteer per week. Volunteers will work for four days per week for the three months of the operation.
  - Hygiene Promotion: door-to-door sensitization is planned for all households on the best hygiene practices. Volunteers will transmit messages in communities, will have image boxes and flyers to assist in for raising awareness.
- For the proposed DREF operation, the DRC Red Cross will deploy 43 people (40 volunteers and 3 supervisors) divided into five action groups.
- A session for lessons learned and evaluation of the satisfaction of beneficiaries will be organised to evaluate and draw lessons from the management of this operation as well as measure the impact of the activity on beneficiaries. That opportunity will be used to brief National Society volunteers and staff on DREF and Emergency appeal guidelines

### **Operational support services**

## Human resources

Out of the 280 volunteers trained in Community Based Health and First Aid (CBFHA), the National Society has already mobilised 88 volunteers deployed to the field. The operation will aim to build the capacities of volunteers deployed, in order to make them more efficient and effective.

Given the needs on the field, the IFRC will deploy a RDRT with experience in logistics for two months to provide support to the National Society. The cost of deploying an RDRT in the DRC is higher than in normal context, based on experience implementing a DREF for floods earlier this year. It is anticipated that the Operation Manager or Logistics Delegate and Finance Assistant under the Emergency Appeal (MDRCD018) will as such be able to support the implementation of this DREF.

Also, the team from the Central Africa CCST including the Regional Disaster Management Coordinator, Health PMER officer, and support services (logistics, administration and finance) will support the National Society. Additional support will come from the Disaster Management Unit of the Regional office.

Given the geography of the town of Gemena and rare nature of frequent flights from Kinshasa, it is desirable that non-food items should be bought locally in Gemena, depending on whether there is a market and other items in Kinshasa.

The National Society needs close support from a Regional Disaster Response Team (RDRT) skilled in logistics. The RDRT will support the National Society in compliance with IFRC procedures. It is worth noting that for shelter intervention, the National Society plans to use the Disaster Management Director in Kinshasa is shelter trained and will provide support for implement of shelter activities in Gemena.

## Logistics and supply chain

- **Procurement plans:** Items available in the Kinshasa market will be purchased with IFRC support (in this case the IFRC logistic delegate deployed to support the Emergency Appeal MDRCD018) in Kinshasa and flown by air to Gemena, while timber or wood for shelter will be purchased locally. Items not available in DRC will be purchased internationally through IFRC logistics.
- **Warehouse and storage plans:** The National Society has a small warehouse at their headquarters in Kinshasa that can be used for storing the items that will be replenished. In Gemena, the operation will rent a warehouse that will be enable us store items pending distribution.
- **Transport and fleet needs:** Two vehicles will be rented for daily activities, especially the transportation of NFIs and materials. Fuel will also be needed for National Society vehicles deployed for this operation for purchases that will be done in Kinshasa. In Gemena, a vehicle will be rented locally for a period of two months. Given the state of roads in Gemena, a 4 x 4 vehicle will be rented and could also use more fuel than usual. The norm is 150 litres for 1,000 km, but provision should be made for more, representing about 250 litres to make up for difficulties caused by the serviceability of the road.
- **Materials and Tenders:** Major purchases, which represent at least close to 90% of the materials, will be done in Kinshasa (NFIs, sanitation materials, etc.) and in Gemena, purchases will be made for light materials like boards and wood to build shelters because transporting them by air will be expensive. The budget for shelter materials will be made based on local prices, while ensuring good quality. This is a lesson learned from a previous flood operation, earlier in the year. Boards are used to make the installation of these tarpaulins firm and prevent the wind from sweeping them away. Tenders will be organised to ensure that procurement procedures are complied with for these purchases. Given the quantities and value of the items to be bought, we are going to organise a closed tender, which will enable us buy this material as soon as possible.

Logistics activities will receive support from the Logistics Delegate transferred as part of the Emergency Appeal for Epidemics MDRCD018 as well as the RDRT that will be deployed to the field.

## Information technologies (IT)

The National Society has internet service that will have to be strengthened in order to enable communication with local branches. Support will also have to be given to the Gemena Red Cross Branch to enable better and quick forwarding of information to the national headquarters. Telephone networks will also be used.

## Communications

The communications department of the National Society will support volunteer relief workers on the field to promote the image of the NS; This will continue as part of activities that will be realised.

Coordination will be created between the respective communications departments of the National Society and the IFRC in order to define the communication strategy with media support. Communication outreach will help to promote the visibility of National Society activities in the affected area.

The DRC Red Cross Communications and Public Relations Officer and the Provincial Secretary in Gemena will be accompanied by journalists, will support the collection of case studies of best practices, photographs, key messages, human interest stories, which will lead to the production of a documentary film as part of the show "30 Minutes of Humanitarian Action" for television channels, as well as radio broadcasts.

### **Planning, monitoring, evaluation, & reporting (PMER)**

The Regional Representation will support the National Society for the preparation of a monitoring plan alongside measurement indicators for progress and the performance of the National Society for the implementation of the planned activities.

Collaboration will be established between the PMER department of the IFCR and the National Society for better monitoring /evaluation as well as to facilitate the elaboration and transmission of regular reports regarding the implementation of activities. A lesson learned and beneficiary satisfaction workshop will be organised at the end of the operation.

Also, colleagues tasked with the Emergency Appeal in the DRC in the Northern region will assist monitoring of this DREF depending on their planning.

### **Security**

Petty crime poses the main risk in main DRC cities. Armed robberies and highway banditry occur in rural areas. Electoral periods are volatile from a security perspective, as they tend to trigger an increase in unrest, particularly in opposition strongholds. The country's record for air travel safety is poor and most private carriers are not maintained to international standards.

### **Administration and Finance**

The administration and finance departments of the Regional Office will support the DRC Red Cross for this operation while complying with DREF/emergency appeal procedures.

A Memorandum of Understanding will be signed between the National Society and the IFCR for better monitoring of procedures in compliance with financial rules that take into account the procedures of the National Society and those for DREF operations.

The IFRC Finance Assistance based in Kinshasa under the Emergency Appeal will help to collect invoices and receipts from the field and to ensure the quality of these documents as well as the best management of the funds received.

### **Budget**

See budget attached





## Contact Information

For further information specifically related to this operation please contact:

### In the National Society

#### DRC Red Cross:

- Grégoire Mateso, National President CR RDC, Tel: +243 990052479; email: [presidentnatinal@croixrouge-rdc.org](mailto:presidentnatinal@croixrouge-rdc.org)
- Moïse Kabongo, National Disaster Management Director, Tel: +243 852387181; email: [moise.kabongo@yahoo.fr](mailto:moise.kabongo@yahoo.fr)

#### IFRC Central Africa Office:

- Andrei Engstrand-Neacsu, Head of Cluster, IFRC Yaoundé Multi-Country Cluster Support Office for Central Africa; email: [andrei.engstrandneacsu@ifrc.org](mailto:andrei.engstrandneacsu@ifrc.org)
- Josuane Flore Tene, DCPRR coordinator, IFRC Yaoundé Multi-Country Cluster Support Office; phone: +237 677 098790; email: [josuane flore.tene@ifrc.org](mailto:josuane flore.tene@ifrc.org)
- Zinedine Kada: Operations Coordinator, IFRC DRC, phone: + 243.853.468.057 email: [zinedine.kada@ifrc.org](mailto:zinedine.kada@ifrc.org)

### In the Africa Region

- **IFRC Region:** Farid Abdulkadir, Head of DCPRR Unit, Nairobi, Kenya; phone +254 731 067489; email: [farid.aiywar@ifrc.org](mailto:farid.aiywar@ifrc.org)
- **IFRC Geneva:** Cristina Estrada, Response and Recovery Lead; phone +41 22 7304 260; email: [cristina.estrada@ifrc.org](mailto:cristina.estrada@ifrc.org)
- **IFRC Regional Logistics Unit (RLU):** Rishi Ramrakha, Head of regional logistics unit; phone: +254 733 888022; fax: +254202712777; email: [rishi.ramrakha@ifrc.org](mailto:rishi.ramrakha@ifrc.org)

### For Resource Mobilization and Pledges:

- **In Africa Region:** Fidelis Kangethe, Partnerships and Resource Mobilization Coordinator; Nairobi; phone: +254 731 984 117; email: [fidelis.kangethe@ifrc.org](mailto:fidelis.kangethe@ifrc.org)

### For Performance and Accountability (planning, monitoring, evaluation and reporting)

- **In Africa Region:** Penny Elghady, Acting PMER Coordinator, [penny.elghady@ifrc.org](mailto:penny.elghady@ifrc.org); phone: +254 731 067277

---

## How we work

All IFRC assistance seeks to adhere to the **Code of Conduct** for the International Red Cross and Red Crescent Movement and Non-Governmental Organizations (NGOs) in Disaster Relief and the **Humanitarian Charter and Minimum Standards in Humanitarian Response (Sphere)** in delivering assistance to the most vulnerable. The IFRC's vision is to inspire, **encourage, facilitate and promote at all times all forms of humanitarian activities** by National Societies, with a view to **preventing and alleviating human suffering**, and thereby contributing to the maintenance and promotion of human dignity and peace in the world.

---

The IFRC's work is guided by Strategy 2020 which puts forward three strategic aims:



**Save lives.**  
protect livelihoods,  
and strengthen recovery  
from disaster and crises.



Enable **healthy**  
and **safe** living.



Promote **social inclusion**  
and a culture of  
**non-violence** and **peace**.

---

The IFRC's work is guided by Strategy 2020 which puts forward three strategic aims:

1. Save lives, protect livelihoods, and strengthen recovery from disaster and crises.
2. Enable healthy and safe living.
3. Promote social inclusion and a culture of non-violence and peace.

# DREF budget

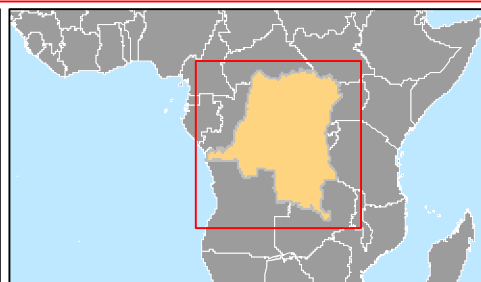
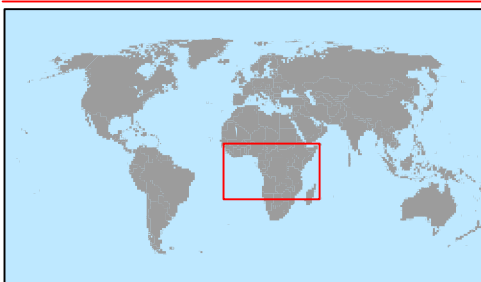
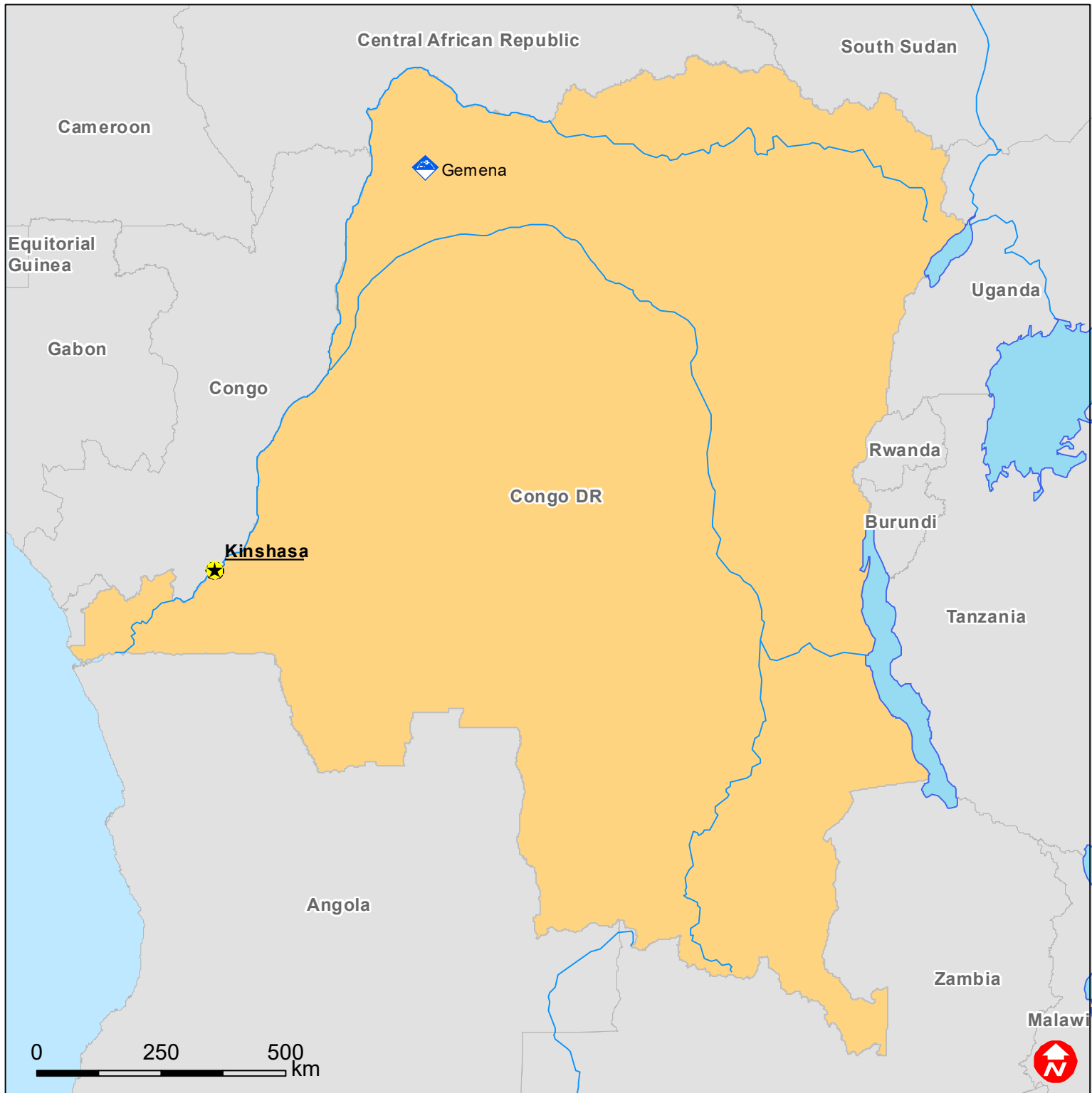
25/11/2016

## MDRCD019: DRC Gemena Floods

Budget Group	DREF Grant Budget	Budget CHF
Shelter - Relief	50,677	50,677
Shelter - Transitional	0	0
Construction - Housing	0	0
Construction - Facilities	0	0
Construction - Materials	0	0
Clothing & Textiles	7,862	7,862
Food	0	0
Seeds & Plants	0	0
Water, Sanitation & Hygiene	14,014	14,014
Medical & First Aid	1,757	1,757
Teaching Materials	2,711	2,711
Utensils & Tools	10,387	10,387
Other Supplies & Services	0	0
Emergency Response Units	0	0
Cash Disbursements	0	0
<b>Total RELIEF ITEMS, CONSTRUCTION AND SUPPLIES</b>	<b>87,409</b>	<b>87,409</b>
Land & Buildings	0	0
Vehicles Purchase	0	0
Computer & Telecom Equipment	0	0
Office/Household Furniture & Equipment	0	0
Medical Equipment	0	0
Other Machinery & Equipment	0	0
<b>Total LAND, VEHICLES AND EQUIPMENT</b>	<b>0</b>	<b>0</b>
Storage, Warehousing	1,566	1,566
Distribution & Monitoring	11,615	11,615
Transport & Vehicle Costs	10,605	10,605
Logistics Services	0	0
<b>Total LOGISTICS, TRANSPORT AND STORAGE</b>	<b>23,786</b>	<b>23,786</b>
International Staff	16,160	16,160
National Staff	1,010	1,010
National Society Staff	1,212	1,212
Volunteers	19,883	19,883
<b>Total PERSONNEL</b>	<b>38,265</b>	<b>38,265</b>
Consultants	0	0
Professional Fees	0	0
<b>Total CONSULTANTS &amp; PROFESSIONAL FEES</b>	<b>0</b>	<b>0</b>
Workshops & Training	8,940	8,940
<b>Total WORKSHOP &amp; TRAINING</b>	<b>8,940</b>	<b>8,940</b>
Travel	10,413	10,413
Information & Public Relations	376	376
Office Costs	0	0
Communications	1,768	1,768
Financial Charges	1,515	1,515
Other General Expenses	0	0
Shared Support Services		
<b>Total GENERAL EXPENDITURES</b>	<b>14,072</b>	<b>14,072</b>
Programme and Supplementary Services Recovery	11,211	11,211
<b>Total INDIRECT COSTS</b>	<b>11,211</b>	<b>11,211</b>
<b>TOTAL BUDGET</b>	<b>183,682</b>	<b>183,682</b>



# Democratic Republic of Congo: Floods



 Affected City