

www.ifrc.org
Saving lives,
changing minds.

Revised Plan of Action (RPOA) Philippines: Typhoon Haima



Emergency Appeal n° MDRPH022	Glide n° TC-2016-000110-PHL
Date of issue: 20 December 2016	Date of disaster: 19 October 2016
Operation manager: Patrick Elliott, Operations Manager IFRC Philippines Country Office	Point of contact: Atty. Oscar Palabyab, secretary general Philippine Red Cross
Operation start date: 19 October 2016	Expected timeframe: 10 months
Overall operation budget: CHF 2,007,914	Amount advanced from DREF: CHF 300,000
Number of people affected: 2.4 million	Number of people to be assisted: 29,210
Host National Society: Philippine Red Cross (PRC) is the nation's largest humanitarian organization and works through 100 chapters covering all administrative districts and major cities in the country. It has at least 1,000 staff at national headquarters and chapter levels, and approximately one million volunteers and supporters, of whom some 500,000 are active volunteers. At chapter level also, a programme called Red Cross 143, where volunteers are in place to enhance the overall capacity of the National Society to prepare for and respond in disaster situations.	
Red Cross Red Crescent Movement partners actively involved in the operation: PRC is working with the International Federation of Red Cross and Red Crescent Societies (IFRC) in this operation, with the International Committee of the Red Cross (ICRC) and other Movement partners also considering what they can support. There are 12 Partner National Societies with presence in the Philippines. Most are supporting PRC's response to Typhoon Haiyan but some – among them German Red Cross – have indicated that they will potentially support PRC's response to Typhoon Haima on bilateral basis.	
Other partner organizations actively involved in the operation: A number of government, non-governmental and UN actors are responding or preparing to respond. These include: <ul style="list-style-type: none"> • Government ministries and agencies including the National Disaster Risk Reduction and Management Council (NDRRMC), Department of Social Welfare and Development (DSWD), the Philippine Armed Forces, the Philippine National Police Force and Local Government Units • UN agencies: Including OCHA, UNICEF and WFP • International organizations & NGOs: Including ACF, IOM, Oxfam, Plan and Save the Children. 	

A. Situation analysis

- **17 October 2016** – Typhoon Haima (locally known as Lawin) entered the Philippine Area of Responsibility (PAR)
- **18 October** – Government enforced pre-emptive evacuations in areas likely to be severely affected by the Typhoon
- **19 October** – [Tropical Cyclone Warning Signal](#) (TCWS) number 5 – the highest – was declared over Cagayan province
- **19 October, 2300H (local time)** – Haima made landfall over Peñablanca, Cagayan (around 500 km northeast of Manila) with winds of 225 kph and gustiness of 315 kph
- **19 October** – Haima brought strong winds and heavy rains; wind damage and flooding experienced in affected areas
- **19 October** – A [DREF allocation](#) for CHF 48,000 was made; it was later topped up to CHF 300,000
- **23 October** – IFRC launched a CHF 2.9 million [emergency appeal](#) to support PRC response and recovery plans

Kalinga	1,000	265	404	404	265	452	125
Apayao	408	373	373	373	373	373	373
Abra	580	168	168	168	168	168	0
Mt. Province	600	108	75	77	57	55	55
PRC	10,088	4,459	4,565	4,567	4,408	4,593	4,057
IFRC contribution		4,852	4,928	4,852	5,085	4,861	5,842

Note:

The table above shows the latest PRC planned target and actual numbers distributed up to 25 November. IFRC contribution denotes stocks already distributed or dispatched from the central warehouses to be distributed by PRC. Distributions are still on going.

Detailed assessment: In November four teams were deployed by PRC to 11 affected provinces to conduct more detailed assessments. Significant needs were reported in the sectors of shelter and livelihoods.



Overview of Red Cross Red Crescent actors in-country

The PRC works with the IFRC and ICRC as well as American, Australian, British, Canadian, Finnish, German, Japanese, The Netherlands, Norwegian, Spanish, Swiss and Qatar Red Cross and Red Crescent Societies in-country. All these partners are coordinating with PRC on how and where they can provide support.

Movement Coordination

IFRC provided a DREF allocation of 48,659 Swiss francs, which was later topped up to CHF 300,000. ICRC has indicated that it could cover some PRC mobilization costs if required. Three personnel of IFRC were embedded in two of the teams that were deployed closer to the affected areas prior to the typhoon's landfall while additional personnel in Manila are supporting the National Society in operational planning, logistics planning and coordination. ICRC and Partner National Societies also have technical specialists who can be made available to support the PRC response if required. Two IFRC delegates are also supporting relief distribution in target

Distribution of non-food items in Barangay Centro, Tuguegarao City, Cagayan province. To support the request of the National Society for non-food items, pre-positioned stocks were quickly dispatched from two warehouses to provide affected families with essential household items and tarpaulins. **Photo: Cheryl Gaglac/IFRC**

provinces. An RDRT was also deployed from Hong Kong Red Cross (Branch of the Red Cross Society of China) to support PRC with PMER.

Three meetings of all Movement partners have been held. In the latest meeting, PRC invited all the partners to participate in a teleconference held to update the wider Movement counterparts – especially those without presence in the Philippines – about the situation, needs, action and plans with regard to Typhoon Haima. During the teleconference, the leadership of PRC reiterated the approach of having a 'One Movement Plan' so as to reach more together.

Coordinating with the authorities

As auxiliary to the public authorities, PRC maintains a strong relationship with government bodies through participation or collaboration with (i) the National Disaster Risk Reduction and Management Council (NDRRMC); (ii) the provincial, municipal and barangay (village) disaster risk reduction and management councils; and (iii) the local government units defined in the Disaster Risk Reduction and Management Act from 2010.

PRC participates in NDRRMC meetings and coordinates with the Department of Social Welfare and Development (DSWD), and Department of Health, and the NDRRMC at provincial, municipal and barangay levels. With regards to Typhoon Haima, PRC has assigned dedicated personnel to represent the National Society in NDRRMC meetings.

Inter-agency coordination

At country level, PRC and IFRC participate in meetings of the Humanitarian Country Team (HCT) held both during disasters and non-emergency times. PRC and IFRC are involved in relevant cluster information sharing, planning, and analysis at all levels while IFRC supports PRC coordination efforts through representation in other relevant clusters as required. Furthermore, IFRC is supporting DSWD in activities relating to the Shelter Working Group.

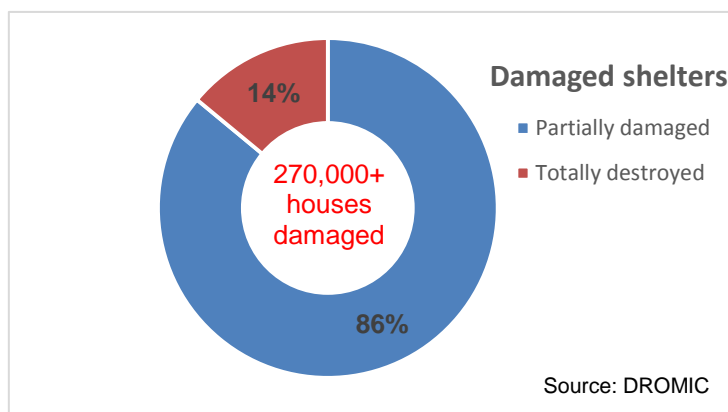
Needs analysis, beneficiary selection, risk assessment and scenario planning

Typhoon Haima was the third major weather disturbance to affect North Luzon within a span of four weeks.

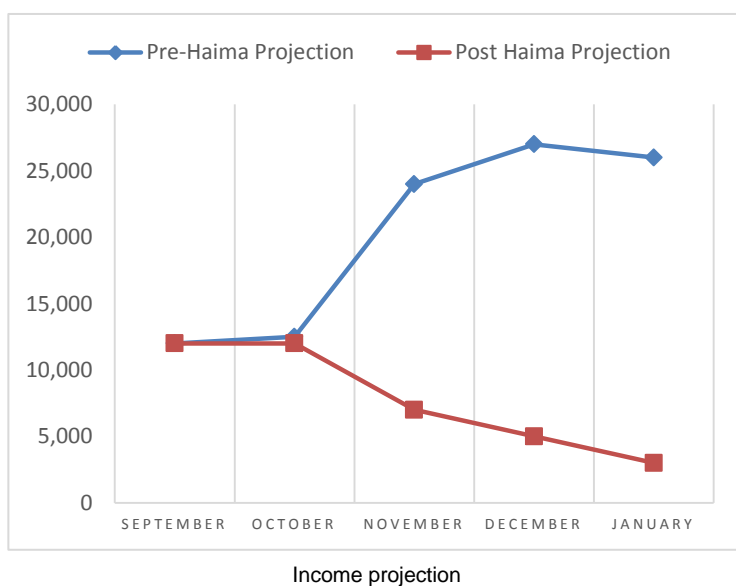
Although the magnitude of the damage was less than expected, a significant humanitarian impact was nevertheless left by Typhoon Haima. Relief operations have continued since the onset of the disaster, focusing on food and non-food items. However, the priority has now moved to support shelter and livelihoods recovery as two of the most significantly impacted sectors.

Recovery needs

The analysis below has been informed by the PRC multi sectoral teams who undertake detailed recovery assessments in the affected areas and prepared an overall PRC Plan of Action for the response.



Shelter: From the PRC recovery assessment it was confirmed that aside from the immediate relief needs of the affected families, thousands of houses were damaged and are in need of repair or total reconstruction. The priority areas are Cagayan, Kalinga and Isabela provinces. Some 45 per cent of houses in Cagayan, Kalinga, Apayao, Abra, Mt. Province and Ifugao were damaged. Communities are in need of shelter repair materials, quality CGI roofing sheets and labour support along with awareness raising on build back safer principles.



Livelihoods: The impact on livelihoods assets has been significant. Almost 70 per cent of the communities had ongoing harvesting activities, but the typhoon damaged most of the crops due for harvest. According to reports from provincial governments, Haima directly or indirectly affected livelihoods of more than 40,800 households or 195,000 people, the most vulnerable of whom are the land tenants who suffered the most due to loss of harvest. Large swathes of land with corn and rice ready for harvest were inundated. Almost 30 per cent of corn and 70 per cent of rice were damaged. Those that were harvested after Haima were of lower quality, reducing their actual value. Communities are in need of support to restart income-generating activities by empowering them to purchase livelihoods assets.

Health: With homes and livelihoods severely affected, families have also become susceptible to health risks such as mosquito-borne and water-borne diseases. Currently, ongoing distribution relief items provide affected households with hygiene kits and mosquito nets to help prevent spread of diseases. Psychosocial support is also provided to the affected population, as well as volunteers and staff of Red Cross. A longer-term response would be focused on community-based disease prevention through the CBHFA approach.

Water and Sanitation: Since water systems and sanitation facilities have been damaged or destroyed, there is a need to rehabilitate them to avoid water-borne diseases, especially those which are in the schools or are being used by members of the communities. Jerry cans are also being provided to support safe water storage. A longer-term response would be to support community based behavioural change and hygiene promotion for adults and children.

Community preparedness and disaster risk reduction (DRR): Community-based disaster risk management projects will be rolled out to support improvement of community resilience. The National Society aims to improve disaster response and mitigation of disaster risks in the communities by providing training and orientation to

community members, who are at the frontlines of these preparedness and risk reduction activities. Through the Red Cross 143 programme, community members will be tapped to be positioned as first responders and advocates of disaster risk management through appropriate training and equipping. The shelter repair assistance project, through interventions which promote the application of safer building techniques, will also provide longer-term impact by improving the resilience of houses in the areas of intervention.

IFRC also continues to work with the National Society in advocating and supporting the advancement of legal and regulatory frameworks to further improve delivery of humanitarian assistance, both from an international and domestic perspective.

National Society institutional preparedness and capacity building: There is a need to allocate resources to strengthen and further improve institutional preparedness of PRC, both in the headquarters and chapters/branches. These include essential office equipment, disaster preparedness stocks and training for members of the Red Cross Action Teams. It is also important to support the improvement of the technical capacity of and provide equipment to affected chapters. Chapters in the six most highly affected areas are currently considered Class D chapters, indicating low levels of human, physical and technical resources¹. This programming approach is in line with PRC Strategy 2017-2021 as well as in conformity with the IFRC Governing Board's recommendation that 10 percent of funds mobilized through an Emergency Appeal be dedicated for disaster risk reduction and preparedness measures.

Beneficiary selection

PRC ensures that interventions are aligned with its own as well as the IFRC minimum standard commitments to gender and diversity in emergency programming, for example by targeting women-headed households, pregnant or lactating women, men and boys made vulnerable by the disaster, families that have not received any or sufficient assistance from the government or other organizations, those belonging to the socially vulnerable households, and those who lack relevant resources to cope with basic humanitarian needs on their own. These groups are considered according to level of impact.

Once beneficiaries for early recovery programmes are identified, each will be given a PRC beneficiary card with their and household members' names. The card will form the basis for the official recognition of bearers as beneficiaries of a PRC programme and during implementation PRC volunteers will countercheck if the names on the card are listed in distribution sheets. Upon receipt of any items or assistance, beneficiaries will sign award sheets or participation lists. With these records, cases of double-counting will be eliminated.

Feasibility and delivery capacity

The PRC chapters in Luzon have technical capacity and experience to deliver in this response with support from the PRC headquarters, IFRC and other Movement partners. All distributions of relief items and needs assessments will be led and carried out by PRC staff and volunteers at the chapter level and supported by PRC technical staff from the National Headquarters.

B. Operational strategy and plan

Overall objective

This operation aims to assist 29,210 people affected by Typhoon Haima in North Luzon with appropriate immediate and medium-term assistance in a timely, effective, and efficient manner, as well as accompany them to recover from the impact of the typhoon and increase their resilience to future shocks.

Proposed strategy

The operation consists of closely integrated sectors aiming to provide:

1. **Immediate household needs** assistance, including distribution of essential household **non-food items**
2. **Livelihoods** support for families and community groups to restart their **income earning** activities and **small enterprise** revival, through cash transfers or provision of inputs (for community-managed projects)
3. **Shelter and settlements** assistance to support access to safer living conditions during the initial states of the emergency by the provision of tarpaulins, followed by cash transfer and roofing materials to prioritize self-recovery, and always accompanied by technical support and awareness on build back safer techniques
4. **Health** interventions focusing on **psychosocial support**, **community-based disease prevention**, **epidemic control**, and **health promotion**
5. **Water, sanitation and hygiene promotion** interventions focusing on improving access to safe water, access to improved sanitation, and the sustainable reduction in risk of diseases (water-borne, vector-borne and water-related) in affected communities;
6. **School and community preparedness** and **disaster risk reduction**

¹Chapter classification is based on the capacity of chapter to generate income for chapter operations and service delivery




Geographically: the IFRC-supported operation will focus on six affected provinces in northern Luzon. PRC will also undertake other interventions using resources it has or it will mobilize bilaterally and/or from non-Movement sources. IFRC will support the overall recovery plan of action of the Philippine Red Cross, committing to contribute to the recovery efforts particularly in Cagayan and Isabela provinces through this appeal.

As with PRC-led operations, there are four key aspects in the strategy for this operation:

- **A Movement-wide approach:** PRC is responsible for the overall coordination and implementation of the disaster response operation, supported by components of the Movement.
- **Cash transfers:** Cash transfers will contribute towards the empowerment of the affected population by giving them the flexibility to prioritize their own recover needs. This modality will be utilized in the recovery phase, specifically the shelter repair assistance and household livelihoods assistance projects.
- **Integrated programming and resilience-building:** Early recovery interventions will aim to address a broad range of sectors, from shelter to livelihoods to WASH, in order to provide the needs of communities and contribute to their improved resilience.
- **Factoring lessons from previous operations:** PRC has recently gained experience in cash transfers in a large-scale operation through Typhoon Haiyan. This response will draw upon that experience.

This Appeal is in support of the overall PRC Plan of Action. Below is a summary of the basic parameters of PRC Plan of Action and the proposed Appeal contribution should all the funding requested be made available.

PRC Plan of Action Targets – number of households

Sector	PRC Target	Appeal Support
 relief non-food items	10,088	5,842
 shelter repair assistance	3,000	1,250
 household livelihoods assistance	4,000	1,250

Due to a lack of funding, the original proposed interventions have been revised in consultation with the National Society. First of all, the most vulnerable households will be identified and prioritized in the target municipalities. The municipalities will be further targeted geographically, with focus on specific municipalities and barangays (villages). It will also take into account individual, household and group vulnerabilities and PRC will coordinate with barangay recovery committees to identify and validate the most vulnerable beneficiaries for the most appropriate interventions. The use of the cash will be prominent in the recovery phase, through shelter and livelihoods interventions.

Crosscutting matters

Gender, diversity and protection

PRC will ensure that interventions are aligned with its own as well as the IFRC minimum standard commitments to gender and diversity in emergency programming, including targeting women-headed households, pregnant or lactating women, and men and boys made vulnerable by the disaster. The following considerations apply:

- prevention of sexual and gender-based violence, such as by taking into account the needs of boys and girls in planning/rehabilitating water and sanitation facilities;
- protecting children in all aspects of the recovery (for example, ensuring that children are not exploited during the training, construction/rehabilitation of water and sanitation facilities in schools);
- disability inclusion (which recognizes that people with disabilities have the same fundamental rights as other members of the community);
- involving the most vulnerable groups within community engagement and local decision-making processes;
- adapting infrastructure for people living with disabilities or who are aged/frail and require access points, latrines with handrails etc.

The operation will also integrate a 'do no harm' approach into all aspects of planning and programming.

Community engagement and accountability

PRC has a long history of working and communicating with affected communities, including during the responses to Typhoon Haiyan. Community accountability and feedback/response mechanisms will be integrated into recovery programmes to ensure that affected populations have direct access to information on the nature and scope of services provided by PRC, along with processes that will enable community participation and feedback.

Because only a fraction of affected populations will be targeted with recovery assistance, the selection criteria will need to be communicated clearly to beneficiaries and wider communities, so that people will understand the rationale

behind targeting. This will help to prevent any potential tensions/frustrations by those people who do not meet the beneficiary selection criteria. Barangay recovery committees will play a key role in this.

In all, community engagement and accountability services will be implemented through context-specific channels, aimed at facilitating beneficiary feedback, including mass communication (such as mainstream media and print media), telephone, Q&A print-outs, flyers, posters and face to face options through social mobilization.

Green response

It is important to incorporate sustainable behaviour and practices within this humanitarian operation: ultimately, actions taken should cause no harm in the communities being supported.

Operational support services

Human resources

PRC mobilized and deployed at least 15 trained and experienced staff and volunteers closer to affected areas prior to the typhoon's landfall. Also mobilized alongside PRC team were four personnel of IFRC – two generalists and two communications specialists – and a professional photographer. Two technical specialists – a coordinator and an information manager – were also deployed in the first weeks after the typhoon to support the national shelter working group.

Following the launch of this operation, all relief activities are being implemented by the five target PRC chapters utilizing their existing staff, but with support of the national headquarters. However, recovery programmes will require the National Society to hire additional project staff. The additional staff members will complement existing teams – at the headquarters and chapter levels – which are also playing a role in the operation. IFRC will continue to provide technical support and guidance as required. The budget provides for up to six PRC project staff and two IFRC technical delegates. PRC also welcomes one member of the Regional Disaster Response Team (RDRT) as an additional technical support to work alongside PRC chapters.

A Surge Information Management delegate has also been deployed by Netherlands Red Cross; this has now been extended to a second rotation.

Logistics and supply chain

Logistics activities aim to effectively manage the supply chain, including procurement, customs clearance, fleet, storage and transport to distribution sites in accordance with the operation's requirements and aligned to IFRC's logistics standards, processes and procedures.

The strong capacity of PRC logistics built over the last years and an experienced IFRC in-country logistics team, supported by two logistics delegates in the IFRC country office, is enough to support with managing supply chain of relief items and transport needs for this operation. To meet the immediate operational needs, the National Society had sufficient stocks of relief items prepositioned across various warehouses and which were released to meet the needs in the affected areas. All in-country transportation of relief items has been carried out by utilizing PRC existing fleet although in some cases additional trucks have been hired.

Procurement to replenish all IFRC standard non-food items (jerry cans, hygiene kits, mosquito nets and tarpaulins) has been conducted internationally by the IFRC Regional Logistics Unit (RLU) in Kuala Lumpur. In order to ensure the quality of and to meet the demand in planned timeframe the corrugated galvanized iron sheets are planned to be purchased internationally via the RLU. Sleeping mats are planned to be sourced locally in the Philippines, with support of the IFRC in-country logistics team based in Manila.

The RLU in Kuala Lumpur will extend technical support to PRC and the IFRC Country office as needed.

Communications

IFRC and PRC communications teams are working closely together in order to build public awareness around the humanitarian needs. Key messages, talking points and news stories will be produced on a regular basis with particular emphasis placed on communicating around the needs of affected people, key milestones and timelines in the operation. Ensuring that the operation is well documented through audio-visual coverage will be an important element of the communications plan. High quality photographic and video material will be produced over the duration of the emergency appeal, designed to support the resource mobilization efforts of Partner National Societies.

Information technology and telecommunications

The appeal budget covers costs of mobile phone credit and Internet cards for the five chapters involved as well as national headquarters teams. PRC will ensure that staff and volunteers involved in the operation can be reachable via

mobile phones, with satellite phones provided as backup. Some of the chapters have computers while others lack essential equipment. The operation will ensure that all the five chapters have the required computers for keying in data, preparing reports and sending official communication, among others.

Information management (IM)

A need has been identified in boosting support in facilitating the collection, collation, analysis and dissemination of relevant multi-sectoral data and information so as to support evidence-based decision making that can contribute to an effective humanitarian intervention. Surge IM support has been sought via the Surge Information Management System (SIMS). This has been provided by the Netherlands Red Cross. A second and last rotation is now also supporting PRC up to the middle of December 2016.

Planning, monitoring, evaluation, and reporting (PMER)

Monitoring of relief and cash distributions will be carried out through the use of beneficiary distribution lists and feedback from beneficiary households via a post-distribution survey. Rehabilitation of water and sanitation facilities in schools will be undertaken by third-party, independent contractors with proven capacity to perform significant construction projects. While the contractors will be required to have site engineers to supervise construction works, PRC and IFRC engineers will continuously monitor the progress and the quality of construction works. In shelter repair assistance, technical supervision will be provided by trained carpenters and masons who will also support house owners to undertake repair/retrofitting works while promoting 'build back better and safer' principles.

As regards to behaviour change elements of the operation, PHASTER and CHAST monitoring tools, baseline and end-line survey questionnaires, community maps, written reports from PRC and IFRC staff, and photographs as documentation will be used for monitoring.

The minimum standards of IFRC emergency appeal reporting will be followed to the letter. Future reports will include a standard operation updates and the final report. In accordance with the IFRC framework for evaluations, an end-line evaluation will be conducted for this operation. The Asia Pacific PMER unit in Kuala Lumpur will support in the planning and guiding of the evaluation.

Security

The IFRC security framework will be applicable for this operation. With regards to PRC staff and volunteers, the National Society's security framework will apply. Coordination will also be observed with the ICRC through regular information-sharing in accordance with the existing, agreed, arrangements.

Administration and Finance

The IFRC provides the necessary operational support for review, validation of budgets, bank transfers, and technical assistance to National Societies on procedures for justification of expenditures, including the review and validation of invoices. PRC has been supported for many years by the IFRC and is accustomed to these financial procedures. The IFRC finance and administration team in Manila will continue to provide support to the operation as requested by PRC and the IFRC programme manager/budget holder.

C. DETAILED OPERATIONAL PLAN

Health

Needs analysis: Individuals who needed psychosocial support to cope with the sudden impact of the disaster on their lives, homes and livelihoods were provided with orientation on how to manage crisis incidents - for the adults; and play therapy for the children. There is a threat to public health due to the large proportion of shelters destroyed and damaged resulting in communities being more susceptible to communicable diseases. Furthermore, conditions left by the typhoon are conducive for the breeding of mosquitoes, with the affected parts – in the north of Luzon – being among those where malaria is endemic. As such, there is a need to provide mosquito nets to affected families. There is also a need for implementing measures aimed at preventing dengue, including vector control, especially because while dengue has become a year-round threat in the Philippines, data suggests that the number of cases peak between July and November each year². Considering that a number of local zika transmissions have been confirmed in the Philippines, key messages on zika prevention will also be included.

Population to be assisted: Community-based health interventions will aim to enhance the prevention, awareness and preparedness for disease prevention and ensure the psychosocial well-being and coping skills of affected communities are strengthened. Two communities will be targeted in this regard.

Outcome 1: The immediate and medium-term risks to the health of affected population are reduced											
Output 1.1 Psychosocial needs of the affected populations are met											
Activities planned	Month	1	2	3	4	5	6	7	8	9	10
1.1.1 Conduct training of trainers (ToT) of facilitators (staff and volunteers) on stress management, peer support, lay counselling, child protection and community-based psychosocial support											
1.1.2 Conduct guided workshops and sport/recreational activities for children, facilitate psycho-education group sessions for adults and refer those with special psychological needs to professional practitioners											
1.1.3 Reproduce and distribute IEC materials on psychosocial support and child protection											
1.1.4 Conduct peer support sessions and organize 'rest and recreation' and team building activities for staff and volunteers											
Output 1.2 Community-based disease prevention and health promotion is provided to the target population											
Activities planned	Month	1	2	3	4	5	6	7	8	9	10
1.2.1 Organize epidemic control for volunteer (ECV) training for community health volunteers											
1.2.2 Mobilize community health volunteers as facilitators of community-based disease prevention, epidemic control and prevention activities, and health promotion activities											
1.2.3 Develop epidemic preparedness and response plans linked with local health systems											
1.2.4 Collaborate with the relief sector in the distribution of mosquito nets to affected populations											
1.2.5 Reproduce and distribute IEC materials on community-based disease prevention, epidemic control and health promotion, complemented by the use of social media and youth as agents of behavioural change (YABC)											
1.2.6 Conduct community-based disease prevention, epidemic control and health promotion activities in two communities											

² Epidemiology of Dengue Disease in the Philippines (2000–2011): A Systematic Literature Review - <http://www.ncbi.nlm.nih.gov/pmc/articles/PMC4222740/>

Water, sanitation and hygiene

Needs analysis: In some affected areas, Typhoon Haima disrupted the supply of safe water, thus the need for distribution of safe water pending restoration of damaged systems. To address this concern, PRC is undertaking distribution of water storage containers to affected families.

Since the typhoon has as well damaged not only people's homes but also community and school water facilities, there is the need to rehabilitate community water systems and other water facilities in schools and communities. Under this operation, PRC will rehabilitate damaged community water systems, support target schools (often used as evacuation centers) to have adequate water facilities and support target communities repair water systems.

Rehabilitation of household sanitation facilities have been removed from the plan to prioritize community based sanitation options. However, software components such as hygiene promotion will still be undertaken.

Hygiene promotion activities are being undertaken in communities and schools alongside distribution of hygiene kits with the view of contributing to improved hygiene behaviour to mitigate the threat of communicable diseases such as diarrhea, dengue, zika, cholera and typhoid. These interventions will be closely linked to community-based health interventions and will complement hardware intervention by creating awareness on safe hygiene practices and correct maintenance of water and sanitation facilities. In order to bridge knowledge and practice of proper hygiene, affected families will also need hygiene items, including hygiene kits.

Population to be assisted: Up to 5,085 families will be provided with water storage containers, while hygiene kits will be provided to 4,861 households. Provision of hygiene items will be complemented with hygiene promotion. Two communities will be supported to rehabilitate damaged water supply systems, two schools supported to rehabilitate water facilities.

All hardware interventions will be accompanied by corresponding software. The participatory hygiene and sanitation transformation in emergency response (PHASTER) approach will be utilized in the two communities that will be supported to rehabilitate damaged water supply systems while the children hygiene and sanitation training (CHAST) approach will be utilized in the two schools that will be supported to rehabilitate water facilities. Some 80 community health volunteers will be trained before they participate in hygiene promotion activities.

Outcome 2. The immediate reduction in risk of waterborne and water-related diseases in targeted communities											
Output 2.1. Daily access to safe water which meets Sphere and WHO standards in terms of quantity and quality is provided to target population											
Activities planned	Month	1	2	3	4	5	6	7	8	9	10
2.1.1 Conduct sessions on household water treatment alongside distribution of jerry cans											
2.1.2 Rehabilitate/construct water systems in two communities											
Output 2.2. Hygiene-related goods which meet Sphere standards are provided to the target population											
Activities planned	Month	1	2	3	4	5	6	7	8	9	10
2.2.1 Distribute safe water storage containers (jerry cans) to 5,085 families											
2.2.2 Distribute hygiene kits to 4,861 families											
Output 2.3. Hygiene promotion activities which meet Sphere standards in terms of identification and use of hygiene items provided to target population											
Activities planned	Month	1	2	3	4	5	6	7	8	9	10
2.3.1 Mobilize existing community health volunteers to participate in basic hygiene promotion activities											
2.3.2 Undertake hygiene promotion activities alongside distribution of hygiene kits to 4,861 families											
Outcome 3. Sustainable reduction in risk of waterborne and water related diseases in targeted communities											

Output 3.1. Adequate sanitation which meets Sphere standards in terms of quantity and quality is provided to target population											
Activities planned	Month	1	2	3	4	5	6	7	8	9	10
3.1.1 Undertake detailed assessments to identify schools and communities whose water and sanitation facilities have been damaged											
3.1.3 Engage suitable construction firm to undertake rehabilitation of water and sanitation facilities in schools and communities											
3.1.4 Monitor the rehabilitation of water and sanitation facilities in two schools and two communities											
Output 3.2. Knowledge, attitude and practice on safe water, sanitation and hygiene in target population increased											
Activities planned	Month	1	2	3	4	5	6	7	8	9	10
3.2.1 Train and mobilize 80 community health volunteers to participate in hygiene promotion activities											
3.2.2 Reproduce information, education and communication materials to complement detailed hygiene promotion activities											
3.2.3 Conduct general assessments followed by detailed baseline surveys in 2 communities and 2 schools											
3.2.4 Conduct detailed hygiene promotion activities in 2 communities and 2 schools											
3.2.5 Undertake end-line surveys to determine the change in awareness and practice in communities and schools reached											

Livelihoods

Needs analysis: Despite the severe impact of Typhoon Haima, markets have resumed trading in most of the affected municipalities, with basic commodities available. However, details have emerged about the massive damage it has wrought to livelihoods. Thousands of poor families which rely on farming have been left without income after rice, corn, and other high-value crop were damaged by floods or typhoon winds. The situation has meant that many tenant farmers, sharecroppers and casual labourers – who depend on agriculture – have lost a good percentage of their income. The estimated cost of damage caused to agriculture alone has exceeded PHP 1 billion (more than US\$ 20 million). In the medium-term, families and communities will need support to recover livelihoods thus be in a position to fend for themselves with dignity.

Population to be assisted: To support immediate needs, IFRC, through this appeal, will support PRC to provide 1,250 families with a conditional cash grant worth PHP 10,000 (CHF 203). The grant aims to provide the most vulnerable affected households cash to enable them to replace livestock, replant or restart small business enterprises for earning household income. In addition, 8 community groups will be provided with a combination of conditional cash grants and inputs for establishing income-generating ventures/projects. Barangay recovery committees will be established to lead selection of beneficiary households and general monitoring.

Outcome 4. Economic security of the affected households is restored											
Output 4.1. Affected communities have restored livelihoods after receiving working capital sufficient to resume income generating activities											
Activities planned	Month	1	2	3	4	5	6	7	8	9	10
4.1.1 Facilitate the formation of barangay recovery committees for selection of target households and community-led monitoring											
4.1.2 Select eight community groups that will receive support to restore livelihoods											
4.1.3 Provide selected community groups with orientation on the programme, distribution process, and guidance to generate proposals											
4.1.4 Provide eight community groups with conditional cash and/or inputs (worth CHF 5,000) for establishing livelihood projects											
4.1.5 Undertake monitoring to ensure that households and community groups supported have resumed or re-established livelihoods											

Shelter (including household non-food items)

Needs analysis: With damage to housing widespread, affected families need support for meeting emergency shelter needs and subsequently to undertake repairs or to rebuild their damaged homes. Furthermore, essential household items were lost to or damaged by the floods and there is a need to replace the items.

Population to be assisted: To address immediate shelter needs, PRC will provide up to 10,088 households with non-food items (including blankets and sleeping mats, water storage containers, mosquito nets and hygiene kits) and emergency shelter materials (tarpaulins). Of the PRC overall target, IFRC is committing to support the provision of NFIs to at least 4,800 households and tarpaulins for up to 5,800 households. In early recovery, 1,250 households, through this appeal, will be provided with 10 pieces of roofing sheets, conditional cash grants for obtaining other shelter repair materials and wages for workers to support them in undertaking repairs.

All hardware interventions will be accompanied by corresponding software. During the relief distribution of tarpaulins will be done alongside provision of IEC materials on the use of tarpaulins while in the recovery phase awareness sessions – combined with technical support on build back better and safer principles – will be organized alongside mobilization of carpenters and masons to ensure that households take in consideration these principles while repairing/retrofitting their dwellings. Shelter repairs will also be conducted following build back safer principles, ensuring improved living conditions and improved typhoon resiliency.

Outcome 5: The immediate household, shelter and settlement needs of the target population are met.											
Output 5.1 Target populations are provided with essential household (non-food) items											
Activities planned	Month	1	2	3	4	5	6	7	8	9	10
5.1.1 Dispatch essential household items from warehouses to affected areas											
5.1.2 Select 4,800 families according to set criteria and prepare beneficiary lists											
5.1.3 Distribute essential household items to 4,900 families											
Output 5.2 Target populations are provided with emergency shelter materials (tarpaulins)											
Activities planned	Month	1	2	3	4	5	6	7	8	9	10
5.2.1 Dispatch emergency shelter items from the warehouses to affected areas											
5.2.2 Select 5,800 families according to set criteria and prepare beneficiary list											
5.2.3 Distribute emergency shelter items to 5,800 families											
5.2.4 Reproduce IEC materials on the best use of tarpaulins and distribute them to the 5,800 families											
Outcome 6: Affected households have recovered safer shelter and gained awareness and skills on safer shelter											
Output 6.1 Affected households whose houses were damaged have repaired or retrofitted back better											
Activities planned	Month	1	2	3	4	5	6	7	8	9	10
6.1.1 Identify 1,250 households that will receive shelter repair assistance and register them as beneficiaries											
6.1.2 Provide selected households with orientation on the programme and guidance on safer shelter construction techniques											
6.1.3 Provide the selected households with CGI sheets and conditional cash grants for obtaining shelter materials											
6.1.4 Mobilize carpenters and masons to ensure that target households have repaired using building back better and safer principles											
6.1.5 Organize awareness sessions for carpenters, masons and community members on building back better and safer principles											

Disaster risk reduction

Needs analysis: The Philippines is vulnerable to various disasters, including typhoons and floods. A good pointer of that is the fact that Typhoon Haima is the third major weather disturbance to affect North Luzon within a span of two weeks while it is projected that up to five more typhoons may affect the country before year-end. This situation highlights the need to ensure that community preparedness and risk reduction measures are initially implemented alongside relief and recover interventions and later continued under the Operational Plan 2017. This will not only enable the fulfillment of the IFRC Governing Board recommendation that at least 10 per cent of resources mobilized via an Emergency Appeal should be allocated for risk reduction but also contribute to linking relief, recovery and development.

Population to be assisted: As part of protecting and restoring community resilience to disasters, support will be given to develop and expand the Chapter Red Cross 143 (RC143). PRC has recognized the advantages of harnessing and utilizing the skills of the RC143 being suitably equipped and have the necessary trainings to be the first

responders to future emergencies and disasters, to be an early warning agent, and to identify local risks, vulnerabilities and capacities to build a resilient community. Structured disaster risk reduction activities will be implemented in two communities and two schools.

Also in a bid to reduce potential occupational risks – of injury – linked to repair and construction of shelter, site safety awareness and occupational first aid training will be organized for at least 100 shelter repair or construction workers. The workers will also be provided with first aid kits.

Outcome 7: Communities' resilience to disasters is strengthened											
Output 7.1 Target communities have improved knowledge and skills to assess risk, plan and implement disaster risks management measures											
Activities planned	Month	1	2	3	4	5	6	7	8	9	10
7.1.1 Organize site safety awareness and occupational first aid training for shelter repair or construction workers											
7.1.2 Provide first aid kits to workers engaged in shelter repair or construction											
7.1.3 Comprehensive school safety framework is promoted and operationalized in coordination with local authorities											
7.1.4 Public awareness and education activities are carried out											

National Society capacity building

Needs analysis: The response to Typhoon Haima will put pressure on the capacity of PRC and demand scaling up of staffing and other organizational components. There is, therefore, the need to allocate resources in mitigating a potential negative impact on the long-term development of the National Society by putting deliberate efforts to strengthen the institutional preparedness capacity of the National Society's headquarters and branches involved in the response.

Population to be assisted: Two chapters of PRC will be supported to obtain essential equipment, five chapters to strengthening Red Cross Action Teams (RCAT) and Red Cross 143 volunteers, one chapter will receive support to rehabilitate damaged office buildings and one low-capacity chapter will be provided with an off-road vehicle suited for flood conditions. PRC will also be supported to undertake improvement works of its Tuguegarao regional warehouse so that prepositioning capacity can be enhanced.

Outcome 8. National Society capacity to deliver on programmes and services in future disasters strengthened											
Output 8.1. Capacity of PRC headquarters and chapters to respond to disasters is strengthened											
Activities planned	Month	1	2	3	4	5	6	7	8	9	10
8.1.1 Rehabilitate office buildings of one chapter											
8.1.2 Provide office and IT & Telecom equipment to two chapters											
8.1.3 Support strengthening of Red Cross Action Teams (RCAT) and Red Cross 143 volunteers in five chapters											
8.1.4 Support improvement works of PRC's Tuguegarao regional warehouse											

Quality programming

Needs analysis: PRC has deployed teams to undertake assessments with the view of determining the specific needs of affected people. Assessments will inform the revision of this plan.

ANNEX 1: ASSUMPTIONS AND RISKS TABLE TEMPLATE

ASSUMPTIONS & RISKS	LIST IF SPECIFIC AFFECTED SECTORS OR STATE 'ALL'	Likelihood	Impact	CAN CONTROL; MITIGATE / INFLUENCE; OR ONLY FACTOR-IN
Adequate support (technical, material, and financial) is available for the operation	All	M	H	Factor into commitments
Access and logistics for delivery of materials, including to remote locations, is not hampered by bad weather conditions and blocked roads	All	H	H	Factor into logistics planning

Budget

REVISED EMERGENCY APPEAL

16/12/2016

MDRPH022

Philippines : Typhoon Haima

Budget Group	Appeal Budget CHF
Shelter - Relief	288,300
Shelter - Transitional	34,650
Construction - Facilities	40,000
Clothing & Textiles	98,016
Seeds & Plants	40,000
Water, Sanitation & Hygiene	58,000
Medical & First Aid	1,200
Ustensils & Tools	28,476
Other Supplies & Services	107,065
Cash Disbursements	531,250
Total RELIEF ITEMS, CONSTRUCTION AND SUPPLIES	1,226,957
Computer & Telecom Equipment	9,000
Office/Household Furniture & Equipment	4,000
Total LAND, VEHICLES AND EQUIPMENT	13,000
Storage, Warehousing	16,000
Distribution & Monitoring	13,700
Transport & Vehicle Costs	94,440
Logistics Services	27,200
Total LOGISTICS, TRANSPORT AND STORAGE	151,340
International Staff	99,000
National Staff	32,400
National Society Staff	141,600
Volunteers	19,375
Total PERSONNEL	292,375
Consultants	20,000
Total CONSULTANTS & PROFESSIONAL FEES	20,000
Information & Public Relations	19,650
Office Costs	9,900
Communications	35,100
Financial Charges	5,750
Other General Expenses	9,000
Shared Support Services	102,293
Total GENERAL EXPENDITURES	181,693
Programme and Supplementary Services Recovery	122,549
Total INDIRECT COSTS	122,549
TOTAL BUDGET	2,007,914
Available Resources	
Multilateral Contributions	1,172,149
TOTAL AVAILABLE RESOURCES	1,172,149
NET EMERGENCY APPEAL NEEDS	835,765

Reference documents



Click for:

- [Budget](#)

Contact information

For further information, please contact:

In Philippine Red Cross, Manila:

- ✓ Atty. Oscar Palabyab, secretary general; phone: +63 2 790 2300; email: secgen@redcross.org.ph
- ✓ Resty Lou Talamayan, manager for disaster management services; email: restylou.talamayan1@redcross.org.ph

In IFRC Country Office, Manila:

- ✓ Kari Isomaa, head of country office, phone: +63 928 559 7170; email: kari.isomaa@ifrc.org
- ✓ Patrick Elliott, operations manager, phone: +63 998 961 2140; email: patrick.elliott@ifrc.org

In IFRC Regional Office for Asia Pacific, Kuala Lumpur:

- ✓ Martin Faller, Deputy Regional Director; email: martin.faller@ifrc.org
- ✓ Nelson Castano, Head of Disaster and Crisis Unit (DCPRR); email: nelson.castano@ifrc.org
- ✓ Necephor Mghendi, Operations Coordinator; mobile: +60 12 224 6796; email: necephor.mghendi@ifrc.org

For resource mobilization and pledges:

- ✓ Diana Ongiti, Relationship Manager, Emergencies; mobile +60 19 274 4960; email: diana.ongiti@ifrc.org
- ✓ Please send all pledges for funding to zonerm.asiapacific@ifrc.org

For in-kind donations:

- ✓ Riku Assamaki, Logistics Coordinator, Regional Logistics Unit; email: riku.assamaki@ifrc.org

For communications enquiries:

- ✓ Patrick Fuller, Communications Manager; mobile: +60 12 230 8451; email: patrick.fuller@ifrc.org

For planning, monitoring, evaluation and reporting (PMER) enquiries

- ✓ Peter Ophoff, Head of PMER, email: peter.ophoff@ifrc.org

In IFRC Geneva:

- ✓ Susil Perera, Senior Officer, Response and Recovery; phone: +412 2730 4947; email: susil.perera@ifrc.org
- ✓ Cristina Estrada, Response and Recovery Lead; phone: +412 2730 4260; email: cristina.estrada@ifrc.org

How we work

All IFRC assistance seeks to adhere to the **Code of Conduct** for the International Red Cross and Red Crescent Movement and Non-Governmental Organizations (NGO's) in Disaster Relief and the **Humanitarian Charter and Minimum Standards in Humanitarian Response (Sphere)** in delivering assistance to the most vulnerable. The IFRC's vision is to inspire, **encourage, facilitate and promote at all times all forms of humanitarian activities** by National Societies, with a view to **preventing and alleviating human suffering**, and thereby contributing to the maintenance and promotion of human dignity and peace in the world.

The IFRC's work is guided by Strategy 2020 which puts forward three strategic aims:



Save lives.
protect livelihoods,
and strengthen recovery
from disaster and crises.



**Enable healthy
and safe living.**



**Promote social inclusion
and a culture of
non-violence and peace.**