

www.ifrc.org
Saving lives,
changing minds.

Emergency Plan of Action (EPoA)

Argentina: Landslide

 International Federation
of Red Cross and Red Crescent Societies

Emergency DREF: MDRAR012	Glide N° LS-2017-000009-ARG
Date issued: 25 January 2017	Date of disaster: 10 January 2017
Operation manager (responsible for this EPoA): Pabel Angeles, IFRC Regional Disaster Management Coordinator for South America	Point of Contact (name and title): Cristian D. Bolado, National Emergency and Disaster Response Director – Argentine Red Cross (ARC)
Operation start date: 10 January 2017	Expected timeframe: 3 months (operation end date 23 April 2017)
Overall operation budget: 85,705 Swiss francs (CHF)	
Number of people affected: 2,666 personas affected.	Number of people assisted: 1,866 people (466 families)
Host National Society presence (number of volunteers, staff, and branches): Argentine Red Cross (ARC) has 65 branches nationwide, 6,395 volunteers and 1,845 staff members	
Red Cross Red Crescent Movement partners actively involved in the operation: International Federation of Red Cross and Red Crescent Societies (IFRC)	
Other partner organizations actively involved in the operation: Working in the field are various Ministries from Jujuy Province, as well as organizations such as: ADRA (Adventist Development and Relief Agency), CARITAS Argentina, Volunteer Fire Brigade, Secretariat of Civil Protection and Comprehensive Emergency and Disaster Management and the Argentine Army.	

[<Click here to view the DREF budget.](#) [Click here to view the contact information.](#) [Click here for the map of affected areas.>](#)

A. Situation Analysis

Description of the Disaster

On 10 January 2017, the accumulation of precipitation in Jujuy Province (approximately 1,500 km north-west of the city of Buenos Aires) led to landslides and floods in various locations in the department of Tumbaya such as Volcán, Tumbaya and Bárcenas (the most affected); a lesser impact was reported in the cities of León, Santa Barbara, Purmamarca, Humahuaca and San Martín. According to local media and residents, events of similar magnitude occurred in 1939 and 1978.

Heavy rainfall has been recorded since early this year in many parts of the country; most of which have been "sudden and with abundant accumulations of water", causing complications at the local level in places such as the provinces of Santa Fe, Cordoba, Buenos Aires and Jujuy.



Four days after the landslide, families were still living on the roof of their homes, which were under two metres of mud in the community of Volcán. Source: Argentine Red Cross (ARC)

One of the most affected localities is Volcán, the capital of Tumbaya department, which is located 41 km north of the city of San Salvador de Jujuy, the provincial capital. The mud and stones that slid down a hill near this town affected 90 per cent of the community's homes and blocked National Route 9, leaving the population with no access over land. In some areas, mud levels reached 2.2 metres, which led to the evacuation of 296 people, who are currently being housed in 3 temporary collective centres: Parador Laguna, a local church and a National Roads building. One person has been reported missing.

Tumbaya, located 7 km north of Volcán (48 km from San Salvador de Jujuy) on National Route N° 9, suffered damage from the landslides and severe flooding, where water levels rose as high as 1.20 metres. The population here is approximately 500 people, of which 150 people (30 per cent of the total population) have been affected. Of these, ten families (about 50 people) had to be evacuated. The only land access to the area from the south on foot until traffic can be resumed over the lone access road (National Route N° 9); however, the area can be supplied from cities located to the north of the province such as Tilcara, as access to those areas is still possible.

The town of Bárcena, with a population of 158 people, is located 10 km south of Volcán (31 km north of San Salvador de Jujuy); this entire area has been affected. A total of 100 people have been evacuated, of which 15 are being housed at Mountain Infantry Regiment (RIM 20) facilities, while others were transported to San Salvador de Jujuy. Due to the suddenness of the landslide, two people lost their lives while travelling through the town along National Route 9.

The communities of Leon, Santa Barbara, Purmamarca, Humahuaca and San Martín, located north of the landslide in Volcán, were hit by flash floods during this same period; local authorities have assisted the affected families



National Route 9: The road is completely blocked, preventing northbound travel from Volcán.
Source: ARC

Currently, these communities are without communication, electricity and public services (water and sanitation). In regard to the electrical supply, the government estimates that it could be restored back to normal within the next 48 hours in some areas; however, no estimated time has been given for restoring the drinking water supply and sewage services. Local access to health (emergency services, health centres) is practically impossible due to the mud in the streets, as well as to the damage suffered by the physical facilities that provided these services. The province's Civil Defence Coordination has set up radio communications equipment, but it is not yet known when fixed and mobile telephone service will be restored.

Damage in Jujuy Province, by community

Location	# of inhabitants	Affected population	% of damage	Evacuated	Self-evacuated	Damaged homes	Deaths	Missing
Volcán	1,731	1,558	90%	296	1,262	389	0	1
Tumbaya	500	150	30%	50	100	38	0	0
Bárcena	158	158	100%	100	58	40	2	0
León, Santa Bárbara, Purmamarca, Humahuaca & San Martín.	71,230	800	1%	0	0	200	0	0
TOTAL:		2,666		446	1,420	667	2	1

Source: On-site assessments by ARC

There is also a risk of the Rio Grande overflowing, which is one of the main rivers in Jujuy province, due to the amount of mud and stone that has affected its riverbed; furthermore, the National Meteorological Service is predicting more storms and precipitation, which could affect the area for the next three days.

The Jujuy provincial government has declared Tumbaya "a disaster area and in a state of provincial emergency", determining that it is in "a critical social, productive, agricultural and infrastructural situation." The Jujuy Ministries of

Health and of the Interior have asked the Argentine Red Cross (ARC) for its continued support of the response and early recovery actions.

Summary of current response

Overview of Host National Society

The Argentine Red Cross started monitoring in Jujuy province due to official meteorological warnings that forecasted heavy rains and storms for the area; the area remains on alert because of the impending rains. On 10 January, a technical team of more than 40 volunteers from the branch in San Salvador de Jujuy was mobilized to the affected area to carry out a rapid assessment. On 11 January, a volunteer member of the National Society's National Intervention Team (NIT) and the technical team from the Salta branch were deployed to the emergency area in order to support the execution of the rapid and detailed assessments for the emergency. That same day a category 2 emergency was declared, and human resources and supplies began to be mobilized from several ARC country network branches and its headquarters.



Evaluation actions in the community of Volcán.
Source: Argentine Red Cross

The activation of the National Society's response system triggered information dissemination channels such as the Disaster Risk Management Information System (SIGRID), the Disaster Management Information System (DMIS), internal emails and ones to strategic partners, etc., including the information mechanisms recently consolidated via a joint work process with four other civil society organizations with nationwide coverage: Caritas Argentina, Scouts of Argentina, ADRA and *Red Solidaria*. Additionally, of the organizations mentioned on the report's first page, only the Argentine Red Cross is conducting sustained efforts in affected areas in Volcán, Tumbaya and Bárcena; meanwhile, the other organizations are carrying out sporadic work in the region.

The Argentine Red Cross is conducting coordinated work with the Argentine government and various provincial states; moreover, information management work is being carried out in the field together with the country's Civil Protection Sub-Secretariat.

In late 2015, the Jujuy branch and the La Rioja branch were the last country network branches to be formed; it currently has 60 volunteers, but they are still in training, prompting the Salta branch, which is the closest branch, to provide assistance to them during this emergency.

Since the first day of the emergency, the Argentine Red Cross has been actively participating in the provincial emergency operations centre (EOC), which consists of the governor, the Ministry of Health, the Ministry of Security and the Municipal Commissioner of Volcán, as well as of representatives from various organizations and agencies; the efforts to coordinate actions in affected communities are conducted from the EOC.

So far, a corps of 72 active volunteers from the branches in San Salvador de Jujuy, Salta, Luján, Saavedra, Santos Lugares, San Andrés, Zárate, Chacabuco and Córdoba has been mobilized for this operation.

As of the writing of this plan of action, the National Society's emergency and disaster response director, together with the national coordinator of first aid assistance and the national health coordinator, are working in the field with the local branch and coordinating response activities with the provincial state.

The main initial actions include:

- Participation in the provincial EOC
- Conducting a rapid emergency assessment
- Conducting a detailed emergency assessment
- Conducting information management actions
- Providing first aid
- Providing psychosocial support (PSS)

- Providing support to the affected people in the collective centres
- Conducting Restoration of Family Links (RFL) actions

Likewise, ARC's headquarters in Buenos Aires, teams from the General Secretariat and the Communications, Administration and Finance, Organizational Development, Internal Services (internal logistics), and First Aid and Promotion Directorates are providing support in areas such as:

- Communications
- Resource mobilization
- Administrative and financial services
- Logistics
- Volunteer deployment
- Planning

Overview of the Red Cross - Red Crescent Movement in the country

During emergencies, the first response is carried out by local branches, but support from headquarters and other branches is made available if the event exceeds the local response capacity.

The National Society's Emergency and Disaster Response Directorate personnel have maintained constant communications with the branches in the areas most affected by these meteorological events, and it has deployed personnel to the field since the emergency's onset; in turn, branches maintain communications with Civil Defence, volunteer fire departments and various municipal bodies.

In Argentina, the IFRC has an office to provide assistance and support to Southern Cone countries. In the event of emergencies and disasters, South American National Societies can count on assistance and support from the Disaster and Crisis Department through its disaster management coordinator in Lima, Peru.

There is also International Committee of the Red Cross (ICRC) representation in the country, which conducts actions specific to its mandate such as working with authorities to integrate, implement and disseminate International Humanitarian Law and international standards on the use of force and carries out actions to build the ARC's capacity to deal with both emergency situations in contexts of violence and crises and provide RFL services.

Movement Coordination

The Argentine Red Cross has been continuously informing and coordinating with the IFRC's Disaster and Crisis Department through the coordinator for South America, and it has kept the ICRC and Partner National Societies (PNSs) in the region apprised of the situation.

The country has Movement Coordination Mechanisms, and a Tripartite Agreement was signed in March 2015 between the National Society, the IFRC and the ICRC in order to maximize the Movement's overall capacity to fulfil its humanitarian mission and strengthen the ARC's capacity.

The ICRC is providing technical support to the ARC's RFL actions and the inductions for the staff and volunteers who will be implementing actions in this area.

Overview of non-RCRC actors in the country

At the Jujuy governmental level, various municipal structures from Volcán, Tumbaya and Bárcena, are involved, as well as the provincial state.

Requirements are analyzed and actions are coordinated through the EOC, the Minister of Security of Jujuy province, and the Argentine Army stationed in the field. Various provincial ministers, intendants, civil organizations and, on specific occasions, members of the community, are involved in the EOC. Coordination efforts in the field are significant, and while humanitarian gaps exist, major actions are being undertaken to coordinate all response and early recovery actions.

Equipment and machinery from the provincial and national government are trying to clear National Route 9, which is blocked from Volcán towards the north; Provincial Police and Gendarmerie personnel are limiting access to the emergency area (only area residents and response agencies and organizations are allowed); and the Military Mountain Regiment are assisting with the emergency. At the community level and based on spontaneous instances of self-organizing solidarity, some neighbours are assisting other neighbours to evacuate and with the clean-up efforts.

The Minister of National Security, the deputy secretary for Civil Protection and Comprehensive Response to Emergencies and Disasters, the provincial governor and several ministers travelled to the area on 14 January 2017.

The Provincial Civil Defence was forced to evacuate residents to collective centres on foot due to difficulties in accessing the area by vehicle. There is still no timeframe for the Volcán residents' "return home" since estimates indicate that mud will remain in their homes for at least a week, which will make it impossible to determine whether there is infrastructural damage.

Other organizations have been providing assistance since the beginning of the emergency such as Caritas Argentina (collecting donations, especially potable water and cleaning supplies) and ADRA (conducted a damage analysis and needs assessment [DANA] in the field).

Needs analysis, beneficiary selection, risk assessment and scenario planning

Detail by areas:

Health

Access to healthcare is practically impossible due to the mud in the streets, as well as to the damage suffered by health service facilities.

As a result of the event, 90 per cent of Volcán is under water and mud. Many animals in the area were killed, which poses a risk of disease outbreaks, as do the accumulation of stagnant water and the current environmental conditions. While no cases of diarrhoea have been reported, the lack of access to safe water may lead to such cases in the next few days. Likewise, the lack of water and poor hygiene conditions threaten the affected families' wellbeing. An additional health risk for the few next days are potential respiratory and ophthalmological ailments caused by the dust that will be generated once the mud dries.

No serious illnesses have been reported among the affected population, but this needs to be monitored continuously. There are several older adults and others suffering from post-traumatic stress in the collective centres. It will be necessary to carry out preventive first aid actions during the return home to reduce the risks to the people carrying out related activities.

The last time a similar event occurred was 39 years ago, which means that the majority of the population has never experienced something such as this, which leads to psycho-emotional distress due to the situation they are experiencing and their uncertainty about how to cope with it.

The Ministry of Health is currently providing medical staff to treat the affected population in the collective centres; complex cases are referred to the medical assistance network in the city of Jujuy.

Given the scenario described above, these are considered the main needs:

- Disease control (prevention and health promotion).
- Psychosocial support.
- Preparing a survey of the people who for various reasons are unable to access health systems and who require periodic control visits.
- First aid assistance.
- Reducing risk and exposure to vector-borne diseases.
- Dust masks for the affected families.

Water and Sanitation

Community safe water supply and sewage systems are currently not functioning properly because mud has affected them. Safe water is being distributed via tanker trucks in collective centres and to people who have remained in their homes.

Through the Argentine Army and the Provincial Social Development Secretariat and Police, the government is delivering bottled water to affected families in the collective centres; these centres also have chemical toilets provided by the province.

As for sanitation, people are using chemical toilets (portable toilets with autonomous systems that do not require sewage connections or special facilities); however, these are useless for bathing or general cleanliness, which would require:

- Cleaning supplies, including personal protection and debris removal items.

- Excreta disposal in collective centres (bathrooms and showers).
- Safe water distribution.
- Water distribution / supply strategy for personal and household hygiene.

Livelihoods

Livelihoods have been interrupted in Volcán, Tumbaya and Bárcena because of the emergency. Many families remain evacuated and self-evacuated, and their main needs are currently being covered by the authorities. There are no open shops or banks in the affected communities. Below is a list of the main livelihood activities:

Volcán: Because this is the capital city, part of the population is employed by the local government. Others work just outside of the city at the lime factory, which also suffered damage; the factory supplies lime products to the entire area. Another large sector engages in wood crafts, which are sold to visiting tourists.

Tumbaya: Some residents make crafts to sell to tourists, while others engage in livestock farming.

Bárcena: This town provides hospitality services to tourists visiting along National Route 9.

Food Security

Food needs have been met by the government through its Human Development Secretariat, which is replenishing the collective centres' stocks every two days.

Shelter

There are currently three collective centres in Volcán (local church, Parador Laguna and National Roads building) and one in Bárcena (20th Infantry Regiment facilities), which house a combined total of 466 evacuees; these centres neither meet minimum shelter standards for housing people nor have an administration and management system.

Conditions are currently overcrowded and people have to share common spaces; Hygiene and sanitation are a concern, as this increases health risks. The ARC is aware that there are some self-evacuated people, but no estimated numbers have been provided by official sources.

The needs in this sector, which are being covered by local and provincial authorities, are:

- Assistance in collective centre administration and management
- Mattresses, bedding.
- Toilets or latrines.
- Assessment of families.
- Primary health care in the collective centres.

The provincial governor has announced post-emergency housing reconstruction efforts in this area. It has not been possible to fully assess the damage to housing as many homes are still covered in mud. Assessments have been planned for next week to gauge the impact on infrastructure; nevertheless, it has already been determined that several homes will probably have to be demolished because they are now unfit for habitation.

Restoration of Family Links

The large amount of mud and stones that swept through the area has interrupted the power supply, and telecommunications are completely affected. Given the event's magnitude, many families remain unable to establish contact. This situation will continue until the communications infrastructure is repaired and rehabilitated. While the number of families who still have not contacted relatives is small, it is important to enable affected people to contact their relatives and let them know how they are.

The ICRC, together with a specialized NIT member, provided RFL induction to the staff and volunteers who will be conducting these activities in the area.

Vulnerability, Risk and Preparations

Locations in Jujuy affected by the landslide are mainly rural, low socioeconomic-level communities located in northern Argentina, which are nestled between streams on both sides of the mountain range area. The area has an early warning system (SAT), which is constituted by a network of sirens that are activated to allow for evacuations during

large flooding from the Rio Grande. Unfortunately, an emergency due to landslides could not be foreseen, and neither province nor the affected communities have a Provincial Contingency Plan.

B. Operational plan and strategy

Overall objective

Reduce the impact and effects of the sudden rains that caused landslides and floods in the communities of Vólcan, Bárcena and Tumbaya in the province of Jujuy by assisting 466 families (1,866 people) through psychosocial support, first aid, health and hygiene promotion, household sanitation and Restoration of Family Links activities.

Proposed strategy

In order to strengthen the fulfilment of the overall objective and in view of the humanitarian gap, the Argentine Red Cross will focus its actions in the communities of Tumbaya, Bárcena and Volcán along the following lines of work:

- First Aid assistance by mobile and travelling teams in the field
- Delivery of dust masks to 1,866 people
- At least 466 families receive information and strengthen their capacity in health promotion and hygiene.
- At least 466 families receive psychosocial support.
- At least 466 families improve hygiene conditions and water quality.
- At least 389 affected families in Volcán have community cleaning kits for their homes.
- The collective centres have the means for safe water storage. Three water tanks are installed in temporary accommodations
- Families who have not contacted their relatives to report on their status receive assistance through satellite phones to restore contact with relatives.

Beneficiary Selection Criteria:

- Rural areas affected by the landslide and floods are being prioritized
- People with the highest degree of vulnerability, especially women, the elderly, children and persons with disabilities.
- Damage to households based on water/mud levels (more than one metre of mud in homes)
- Families that have remained incommunicado and lack means of transportation.
- Families who have suffered material losses and impact to housing infrastructure.
- The number of days affected by the presence of water/mud within dwellings.
- Humanitarian needs not covered by other agencies or organizations.

Target Population

A total of 1,866 people (466 families) from the affected communities of Volcán, Tumbaya and Bárcena will be prioritized in the National Society's actions due to the high vulnerability and humanitarian needs in Jujuy province.

Location	People	Families
Volcán	1,558	389
Tumbaya	150	37
Bárcena	158	40
Total	1,866	466

Operational support services

Human resources

The nearest ARC branch is 41 km away in San Salvador de Jujuy, which mobilized its general coordinator together with a first response team. With assistance from the Salta branch, a volunteer NIT team member was deployed together

with a team of 40 volunteers from that same branch in order to assist in the activities conducted during the first few hours after the emergency, including the emergency assessment.

Currently, the operation involves a total of 72 volunteers from ARC branches in San Salvador de Jujuy, Salta, Luján, Saavedra, Santos Lugares, San Andrés, Zárate, Chacabuco and Córdoba, and 57 of the 72 volunteers are in the field. The operation has also deployed first aid, psychosocial support, health and telecommunications personnel. In addition, representatives from all headquarters' directorates are participating in the National EOC, with support from the volunteers that are in the process of joining the NIT.

Because of its proximity, the Salta Branch will support the operation by providing ongoing technical assistance to the Jujuy branch. Likewise, the Emergency and Disaster Response Directorates will conduct daily field visits to evaluate the actions' progress and support the local branch. The operation will be managed with National Response Directorate staff, and no outside hiring will be required as a result.

Logistics and supply chain

The entire ARC vehicle fleet and logistical resources have been made available for this operation. The Salta branch has made its material resources available, including one vehicle, first aid posts and first aid kits, and national headquarters has provided one passenger transportation unit, a telecommunications kit, communications equipment, first aid materials, and clothing, among other items.

Information Technology (IT)

Communications equipment, mobile and fixed telephony and laptops have been made available in order to maintain contact between the branches and operational volunteers and their base, maintain and update records, plan and coordinate the emergency, and the ARC hired a satellite telephone service to allow the affected people to contact their relatives. Open Data Kit (ODK) tool will be used to record surveys and identify beneficiaries.

Communications

Internal communication is maintained over mobile phones and the Disaster Risk Management Information System. The transmitted information is related to organizing human resources, emergency updates, on-site operational actions and reporting; the National Emergency and Disaster Response Directorate coordinates these actions. Internal communiqués have been submitted daily, and continuous communication are maintained between all of the areas and the branches in the country network.

External communications with the community and donors are conducted through social networks (official Facebook and Twitter pages), emails to official ARC accounts, mass media (digital/graphic media web portals, television and radio), and the ARC's landlines. Fundraising mechanisms have been publicized since the beginning of the emergency. The ARC receives donations via bank transfers or over the phone via credit or debit cards, although contributions have not been significant so far. This campaign is being conducted over social networks, and there have been more than 30 press releases in various local and national media (please see the [Annex](#) for some of the press releases and articles on the emergency). Likewise, communication pieces and press releases will be made as part of accountability to the community.

It is necessary to issue communications to disseminate the implementation of this plan of action to the affected communities, the government, donors and the National Society.

The Communications Department will prepare videos, beneficiary interviews, a social media campaign and develop informational, dissemination and resource mobilization materials.

Security

Safer Access and Keeping Safe is ensured throughout all of the field operations, and all participating volunteers have private health and emergency insurance provided by their respective branch. A plan has been established to ensure safety and the volunteers' access to targeted areas. Moreover, the operation will provide personal protective gear, consisting of rubber boots, helmets and institutional clothing.

Planning, monitoring, evaluation and reporting (PMER)

The Argentine Red Cross' Emergency and Disaster Response Office (DRED for its acronym in Spanish) will monitor, support and track the operation, and it will conduct several support, follow-up and assessment visits. At the end of the operation, a meeting will be held to evaluate the operation and share lessons learned.

The IFRC will provide monitoring and technical support at the operational and financial level through its regional disaster management coordinator and Finance Department.

Administration and Finance

The Argentine Red Cross has specific procedures for procurement and accountability in emergency situations, which tend to guarantee transparency in the management of funds allocated toward the implementation of humanitarian aid actions. The Administration and Finance Directorate is supporting the operation through budget tracking, purchasing, expense reports, audits and financial reports. Costs of stationery, photocopying, evaluation and distribution materials, mobile telephony among others are covered under this operation.

In addition, the National Society conducts annual accounting, which is submitted through the organization's Annual Report and Balance; the accounts are audited by an independent auditing company, and there is an internal Supervisory Accounts Committee. Furthermore, the Report and Balance are submitted to the Argentine government, which reviews and approves it. Additionally, DRED has a technical team hired by the National Society to manage the emergencies, which includes a financial officer.

Water, sanitation and hygiene promotion

Needs analysis: Community safe water supply and sewage systems are currently not working due to damage from the mud. Argentine Army and the Provincial Social Development Secretariat and Police are distributing safe water in collective centres and to people who have remained in their homes. Water is being delivered by tanker trucks, but the affected community does not have the means to store it. As for sanitation, people are using chemical toilets; however, these are useless for bathing. While bottled water is being distributed to collective centres and other places people gather, water networks will not be operational for several weeks as they have collapsed under the mud and stones displaced by the landslide. This plan of action proposes the installation of 3,500-litre water tanks in each collective centre since these centres are expected to remain open until at least next month and there is no space for storage. After debris and mud have been removed from the streets, the municipal Public Works Service will begin rehabilitating water and sanitation systems.

Population to be assisted: The Argentine Red Cross will provide support to at least 466 flood-affected families (1,866 people) through the provision of information on hygiene, sanitation and water care in the communities of Volcán, Tumbaya and Bárcena in Jujuy province.

Objective		Indicators											
Outcome 2 At least 466 families improve their hygiene conditions, and the water quality for evacuated families returning to their homes is improved		N° of families assisted											
Output 2.1 Evacuated families have materials that provide basic hygiene promotion and water care information		N° of dwellings cleaned N° of families trained N° of families who receive information											
Output 2.2 Families in Volcán have community cleaning kits for their homes		N° of families who receive cleaning kits											
Output 2.3 Families in collective centres and key locations have a water supply from water storage tanks		N° of tanks installed N° of litres distributed											
Activities	Weeks	1	2	3	4	5	6	7	8	9	10	11	12
House-to-house visits to provide information on household hygiene, sanitation and water quality to affected families													
Acquisition and installation of 1 water storage tank in each collective centre													
Purchase of materials for community cleaning kit													
Delivery of community cleaning kit													

Community cleaning kit (39¹ kits, one kit for 10 families)

- 10 industrial-strength masks with filters.
- 10 pairs of long gloves
- 2 wheelbarrows
- 5 shovels.

¹ Please note that the costs of the cleaning kits are higher than usual due to the remoteness of the affected communities.

- 10 work buckets
- 10 mopping buckets
- Sacks or bags for debris
- Plastic trash bags
- 10 brooms
- 10 dustpans
- 10 mops
- 10 brushes

Restoration of Family Links

Needs analysis: Given the interruption in telecommunication services, the requests ARC has received through various communications channels (social networks, emails, etc.) and the affected population's need to inform their close relatives of their status, the need for RFL services for the first month of the operation has been identified, especially for the most vulnerable groups. At the moment, the Argentine Army is providing telecommunications equipment to facilitate mobile phone access, but it is still deficient in some areas.

Population to be assisted: RFL services will be made available to at least 389 affected families in the community of Volcán.

Outcome 3: Contact is restored between family members who have been separated or remain incommunicado due to the emergency	N° of families in which contact is restored												
Output 3.1 People in the emergency area are able to contact relatives in other areas of the country	N° telephone calls made												
Activities	Week / Month	1	2	3	4	5	6	7	8	9	10	11	12
The National Society provides RFL communication services via satellite phone in collective centres and in other sectors of the affected city													
RFL induction for Jujuy and Salta branch volunteers													

Quality programming / Areas common to all sectors

The activities established for common areas will facilitate access to communities and coordination with the municipality and other entities external to the Argentine Red Cross in order to carry out relief actions, work at extraction points, the collective centres and on the return home of those who have gone back to their dwellings.

Objective	Indicators
Outcome 4: Continuous assessment, monitoring and analysis inform the operation's design and implementation.	N° of assessments conducted
Output 4.1. Initial needs assessment is conducted in consultation with beneficiaries	N° of assessment reports that consult beneficiaries (assessment reports, plan of action)

Contact information

For further information specifically related to this operation please contact:

In the Argentine Red Cross:

- Cristian D. Bolado, disaster response director, Argentine Red Cross, phone: +54-0221-5860-606; email: cbolado@cruzroja.org.ar

In the IFRC country office in Buenos Aires:

- Alexandre Claudon, IFRC head of country cluster team for Argentina, Brazil, Chile, Paraguay and Uruguay; email: alexandre.claudon@ifrc.org

In the IFRC Americas regional office, Panama (+507 317-3050):

- Iñigo Barrena, head of Disaster and Crisis Department; email: ci.barrena@ifrc.org
- Stephany Murillo, regional senior logistics and mobilization officer; email: stephany.murillo@ifrc.org
- Priscila Gonzalez, planning, monitoring and reporting team coordinator; email: priscila.gonzalez@ifrc.org
- Diana Medina, communications coordinator; email: diana.medina@ifrc.org
- Julie Hoare, head of partnerships and resource development; email: julie.hoare@ifrc.org

In IFRC Geneva:

- Sune Bulow, emergency operations and information management lead, phone: +41 22 730 4325, email: sune.bulow@ifrc.org
- Cristina Estrada, response and recovery lead, phone: +41.22.730.4529, email: cristina.estrada@ifrc.org

Click [here](#) to return to the title page

How we work

All IFRC assistance seeks to adhere to the Code of Conduct for the International Red Cross and Red Crescent Movement and Non-Governmental Organizations (NGO's) in Disaster Relief and the Humanitarian Charter and Minimum Standards in Disaster Response (Sphere) in delivering assistance to the most vulnerable.



The IFRC's vision is to inspire, encourage, facilitate and promote at all times all forms of humanitarian activities by National Societies, with a view to preventing and alleviating human suffering, and thereby contributing to the maintenance and promotion of human dignity and peace in the world.

DREF OPERATION

MDRAR012 - Argentina Landslides

23/01/2017

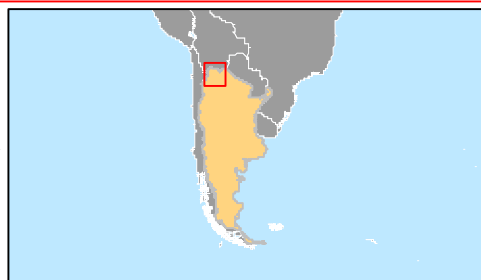
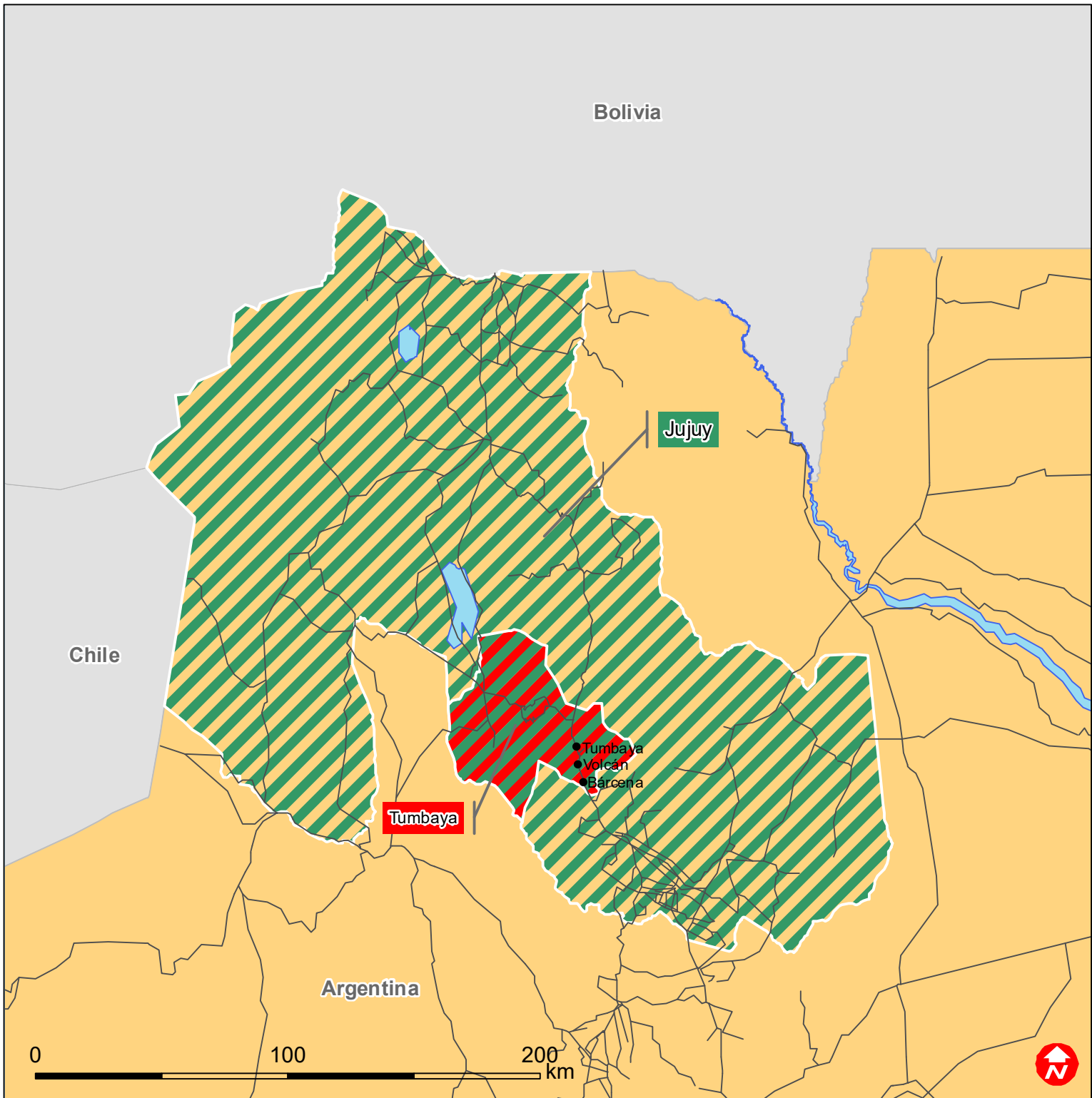
Budget Group	DREF Budget CHF
Shelter - Relief	0
Shelter - Transitional	0
Construction - Housing	0
Construction - Facilities	0
Construction - Materials	0
Clothing & Textiles	0
Food	0
Seeds & Plants	0
Water, Sanitation & Hygiene	40,616
Medical & First Aid	3,286
Teaching Materials	7,128
Ustensils & Tools	0
Other Supplies & Services	0
Cash Disbursements	0
Total RELIEF ITEMS, CONSTRUCTION AND SUPPLIES	51,031
Land & Buildings	0
Vehicles	0
Computer & Telecom Equipment	0
Office/Household Furniture & Equipment	0
Medical Equipment	0
Other Machinery & Equipment	0
Total LAND, VEHICLES AND EQUIPMENT	0
Storage, Warehousing	0
Distribution & Monitoring	2,022
Transport & Vehicle Costs	4,550
Logistics Services	0
Total LOGISTICS, TRANSPORT AND STORAGE	6,572
International Staff	0
National Staff	0
National Society Staff	2,427
Volunteers	6,572
Other Staff Benefits	1,011
Total PERSONNEL	10,010
Consultants	0
Professional Fees	0
Total CONSULTANTS & PROFESSIONAL FEES	0
Workshops & Training	607
Total WORKSHOP & TRAINING	607
Travel	5,056
Information & Public Relations	3,842
Office Costs	2,326
Communications	1,031
Financial Charges	0
Other General Expenses	0
Shared Office and Services Costs	0
Total GENERAL EXPENDITURES	12,255
Partner National Societies	0
Other Partners (NGOs, UN, other)	0
Total TRANSFER TO PARTNERS	0
Programme and Supplementary Services Recovery	5,231
Total INDIRECT COSTS	5,231
TOTAL BUDGET	85,705





Glide N° LS-2017-000009-ARG

DREF N° MDRAR012

Argentina: Landslides



-  Affected Province
-  Most Affected Department

Annex

Media links:

<https://noticias.terra.com.ar/argentina/al-menos-dos-personas-murieron-por-un-alud-en-el-noroeste-de-argentina,4eca34a8ef669748fdc43e48d644517bituldjcy.html>

<http://www.jujuyaldia.com.ar/2017/01/11/la-otra-cara-del-temporal-la-solidaridad-de-los-jujenos-no-se-hizo-esperar-con-los-damnificados-por-el-alud/>

<http://www.infobae.com/sociedad/2017/01/11/impactantes-imagenes-del-alud-que-azoto-jujuy-hay-dos-muertos-y-mas-de-mil-evacuados/>

http://tn.com.ar/politica/la-crecida-del-rio-grande-desato-un-alud-en-jujuy-hay-evacuados-y-heridos_765553

<http://misionesonline.net/2017/01/11/alud-en-jujuy-hay-dos-muertos-y-mas-de-mil-evacuados/>

<http://www.opinion.com.bo/opinion/articulos/2017/0110/noticias.php?id=209018>

<http://www.eltribuno.info/jujuy-un-alud-barro-dejo-dos-muertos-1000-evacuados-y-corte-total-la-ruta-9-n811931>

<http://www.contextotucuman.com/nota/68156/alud-en-volcan-jujuy-hay-dos-muertos-y-mas-de-mil-evacuados.html>

<http://www.elpopular.com.ar/nota/87191/un-alud-de-barro-y-agua-se-produjo-en-una-localidad-jujena>

<http://www.lagaceta.com.ar/nota/714776/sociedad/jujuy-hubo-dos-muertos-unos-1000-evacuados.html>

<https://noticias.terra.com.ar/argentina/un-millar-de-personas-permanecen-evacuadas-por-alud-en-el-norte-de-argentina,0af1eeb630cb995d7be45b8faa196d55f5xjn8bs.html>

<http://www.dailyweb.com.ar/noticias/val/25317-9/alud-e-inundacion-en-tumbaya-Bárcena-y-volcan-provincia-de-jujuy.html>

<http://www.lanacion.com.ar/1975130-alud-declaran-zona-de-desastre-y-emergencia-social-tres-pueblos-de-jujuy>

<http://www.telam.com.ar/notas/201701/176440-alud-jujuy-cruz-roja.html>

<https://noticias.terra.com.ar/argentina/unos-500-argentinos-siguen-evacuados-por-alud-y-declaran-zona-de-desastre,20c9a56390b3ec809af9b8f9f35f6c044acse7mn.html>

<http://www.lagaceta.com.ar/nota/714776/sociedad/jujuy-hubo-dos-muertos-unos-1000-evacuados.html>

<http://www.infobae.com/sociedad/2017/01/11/impactantes-imagenes-del-alud-que-azoto-jujuy-hay-dos-muertos-y-mas-de-mil-evacuados/>

http://internacional.elpais.com/internacional/2017/01/11/argentina/1484154859_081176.html

<http://www.lavoz.com.ar/sucesos/desastre-en-jujuy-el-alud-dejo-dos-victimas-fatales-y-1700-damnificados>

<http://www.eleconomistaamerica.com.ar/actualidad-eAm-argentina/noticias/8078624/01/17/Cientos-de-jujenos-siguen-evacuados-por-el-gigantesco-alud-de-piedras-y-lodo.html>