

International Appeal Operations update Pacific: Tropical Cyclone Pam



International appeal n° MDR55001	GLIDE n° TC-2015-000020-VUT
Operations update n° 7 (24-months consolidated report) Issued on 31 March 2016	Timeframe covered by this update: 13 March 2015 to 28 February 2017
Operation start date: 13 March 2015	Operation end date: 30 September 2017 (30 months)
Appeal budget (revised): CHF 8,024,577	Current expenditure: CHF 7,535,851
Appeal coverage: 100% donor response list	Funding gap: CHF 0
Disaster Relief Emergency Fund (DREF) loan: CHF 575,000	
Number of people affected: 247,408	Estimated number of people being assisted: 43,880

Operation Summary

March-April 2015: Tropical Cyclone Pam developed in the East of Solomon Islands on 6 March and gained strength as it moved south towards Vanuatu. Heavy rain, strong winds and sea swell, combined with king tides, caused widespread coastal flooding and wind damage. Pam hit Vanuatu as a Category 5 cyclone on 13 March. An [Information Bulletin](#) was issued and a Disaster Relief Emergency Fund (DREF) Operation was launched for Vanuatu. An IFRC Field Assessment Coordination Team (FACT) was deployed and an International Appeal, consolidating the operations in the five affected countries, for CHF 5.7 million was launched on 23 March. The appeal aimed to cover affected communities in Vanuatu, Papua New Guinea, Tuvalu, Solomon Islands and Kiribati. Relief distributions were conducted across five countries and an [Operations Update](#) was issued on 10 April.

May-June 2015: Early recovery assessments commenced. Real-time evaluation (RTE) planning and recruitment process started. Plans of action for the five countries were updated based on the assessment findings, resulting in the overall International Appeal revision. [Operations Update 2](#) was issued on 15 May. The International Appeal revision is launched on 17 June, with a budget of CHF 6.8 million.

July-August 2015: Recovery materials arrive in Vanuatu and Kiribati with materials arriving in Tuvalu later the same month. WASH recovery work begins in Vanuatu and [Operations Update 3](#) issued on 21 July. The [Real-Time Evaluation](#) is completed in early August. Additional recovery assessments in Papua New Guinea, Vanuatu and Tuvalu.

September-October 2015: An estimated 44,785¹ people have been assisted across all cyclone-affected countries with direct relief activities. [Operations update 4](#) is published.

November – December 2015: IFRC and French Red Cross sign a Project Cooperation and Funding Agreement, in which the French Red Cross will support the Vanuatu Red Cross in the implementation of the appeal activities in North Tanna. Meanwhile, the WASH cluster has been reactivated due to El Nino response. A total of 900 households have received the Build Back Safer Awareness sessions in West Tanna. The participatory hygiene and sanitation transformation (PHAST) training of trainers (TOT) in Vanuatu has been held. Finally, the Tuvalu Red Cross Society was recognized by Red Cross Movement, and is now officially the 190th registered member of the International Federation.

¹ A correction in the previous report has led to a decrease from the previously reported figure.

January - March 2016: A field delegate was recruited to support Tuvalu, Kiribati and Solomon Islands to continue the implementation of activities. A monitoring visit was undertaken by a field delegate to support the development of a consolidated activity plan TC Pam recovery operations and emerging events including the El Nino induced drought event in the western highlands of Papua New Guinea. [A first public Federation-wide report](#) has been published to mark the first anniversary since the cyclone. This report captures the collective progress, achievements and resources from the Federation members in response to Cyclone Pam. In addition, [operations update 5](#) was published also marking the 12-month mark of the IFRC appeal operation.

April – September 2016: A new IFRC operations manager was appointed in April to end the implementation of the Appeal and to readjust it based on the evolving needs. The budget is revised from CHF 8,492,669 to CHF 8,024,577. The new budget is reflecting the actual budget and not based on decreasing needs. An estimated revised **43,880** people have been assisted across all cyclone-affected countries with direct relief activities. Out of this total number of beneficiaries reached, an estimated **32,713** beneficiaries have also been reached with longer-term recovery services.

The current global implementation of the Appeal is of 76%. The operation end date has been increased by three (3) months until end of September 2017, bringing the operation total length to 30 months. This would allow French Red Cross activities funded by this appeal to be completed. This extension would also allow the TC PAM appeal budget for Papua New Guinea (PNG) to be implemented, as for now TC Pam implementation for PNG will need to be validated once the new IFRC country representative has been officially appointed.

Implementation of activities in Solomon Islands is close to finished. Tuvalu activities are proceeding as planned, and activities in Kiribati are being readjusted as logistical difficulties have caused considerable delays in the implementation of shelter activities.

In Vanuatu, WASH activities in Paama and the Shepherds islands are being implemented as planned and should be completed by December 2016 (these activities include mainly latrines, construction of rainwater catchments and hygiene promotion activities). French Red Cross implementation in Tanna Island will continue until September 2017. Two out of three schools rehabilitations have been completed and work has started for the third one in Emae Island. A new shelter/construction delegate from New Zealand Red Cross (NZRC) has joined the operation and is currently focusing on the school rehabilitation work and institutional preparedness constructions such as warehouses and National Society Headquarter. The community shelter project has been concluded and livelihood activities will enter into their second phase.

October 2016 – February 2017: An estimated revised **43,880** people have been assisted across all 5 cyclone-affected countries with direct relief activities, **39,915 people in Vanuatu only**. Out of this total number of beneficiaries reached, by end of February 2017, an estimated **32,242** beneficiaries have also been reached with longer-term recovery services, **22,280 people in Vanuatu only**. The final estimation of **34,573** beneficiaries for the recovery phase, represents the ultimate target when the French Red Cross outcomes inside the IFRC Appeal will have been achieved by September 2017.

As of end of February 2017, the current financial global implementation of the Appeal is **94%**. Most of the IFRC team in country has left as all field activities were implemented by end of February 2017. Only the operation manager and the finance delegate are closing the accounts and last activities until end of March 2017. From April until September 2017, the IFRC country cluster support team (CCST) in Suva, Fiji will be monitoring remotely the remaining French Red Cross activities and will conclude the IFRC TC PAM Appeal.

Coordination and partnerships

Red Cross Red Crescent Movement

The representatives of each partnering organisation (Vanuatu Red Cross, Australian Red Cross, French Red Cross and IFRC) have a close working relationship and liaise frequently as they are all based in the same Vanuatu Red Cross Headquarters. Information sharing is ongoing with Red Cross partners that are contributing to the appeal including partners that do not have a delegation in Vanuatu such as New Zealand Red Cross and American Red Cross.

Vanuatu Red Cross Society (VRCS) 2017/2020 Strategy has been redrafted and finalized with IFRC support. The survey feedback has been concluded and feedback from the Board as well. Final consultations will continue with the branches and senior management team for their last inputs. The ownership of VRCS new draft

strategy is now completed. The final version should go through the appropriate institutional process for its validation.

Shelter cluster coordination and Pacific Local Supplier Engagement Project

For Vanuatu, shelter cluster coordination has been reactivated in 2016 as UNHABITAT has removed its support to the Public Works Department (PWD) shortly after they took the responsibility. The IFRC support has been in the form of covering the costs for a shelter cluster coordinator (SCC) locally recruited and based within the PWD for a period of 12 months.

IFRC's support to the shelter cluster through the SCC position aims to strengthen the capacity of the PWD and to revive the shelter cluster coordination in country.

In October 2016 and through 2017, the SCC has increased its current role with the support of Australian Red Cross in working on the Pacific Local Supplier Engagement Project. This project is to develop database of potential suppliers, traders, service providers in different field who will likely be engaged in humanitarian response. Information will be digitalized and made available to relevant stakeholder for using during emergency.

Inter Cluster and Wash and Health cluster coordination

In Vanuatu, the National Society (VRCS) is an active member of the National Disaster Committee (NDC), managed by the National Disaster Management Office (NDMO) and where VRCS participates and takes action on humanitarian matters affecting the country. NDMO organizes **inter-cluster** meetings on a monthly basis where VRCS and IFRC represent the Movement. Contingency and response plans, logistical challenges, humanitarian needs and trainings are shared and discussed.

The **WASH cluster** is led by the Department of Geology, Mines and Rural Water Supply (DGMWR) and meetings take place fortnightly. The cluster has been working with all WASH actors in Vanuatu to coordinate WASH-related activities with active participation from all Movement partners in country. The continued pressure on rural water supplies as a result of *El Nino* weather event is becoming a priority. The cluster is coordinating the *El Nino* response by developing a water preparedness plan for all partners.

The **Health cluster** meetings take place on a monthly basis, led by the Ministry of Health (MoH). The main focus has been on recurrent loss of lives due to extreme dehydration related to infectious water-borne diseases in three provinces. Community health and hygiene promotion activities have been increased at country level as a mitigation measure. IFRC and VRCS both ensure a regular presence to these two specific clusters.

Over the last few months as TC PAM activities were phasing out, the clusters in Vanuatu have concentrated their efforts on the making of the Country Preparedness Package (CPP) and a first draft has been achieved end of February 2017 and is going for revision through the different humanitarian stakeholders.

The Country Preparedness Package (CPP) is a Pacific Humanitarian Team (PHT) preparedness initiative to strengthen collaboration between national and international actors during a disaster response.

The CPP is a process in which national and international actors develop and agree upon a country-specific approach for how they will work together in a disaster.

The CPP is developed and agreed with the respective national government in advance of a disaster. Through the process, national actors become more aware of international support options and how they can be activated. This will enable a more 'demand-driven' response tailored to the specific context in which it occurs.

The CPP also helps to make international actors more aware of existing national systems and structures by clearly documenting and making key information available to all. This will help ensure responses are nationally-led, with international actors supporting and working through existing national structures.

At the end of the process, a completed CPP will be a set of documents outlining the existing national structures and the agreed plans for utilizing international support in a disaster response. These documents will be made available online, with a printable summary available for off-line use in an emergency.

This process is processed in country by the National Disaster Management Office (NDMO) in coordination with VRCS and integrating Red Cross partners inputs. Moving forward, the CPP process in Vanuatu will be also monitored by the IFRC CCST in Fiji.

Real Time and Final Evaluation

A Real-Time Evaluation (RTE) was completed in August 2015. The evaluation was commissioned to assess IFRC's support to the response operation, and to inform the ongoing recovery support provided to the National Societies in the affected countries. Emphasis was placed on looking at the impact and challenges in the size, scope, and range of the operation. The [evaluation report and management response](#) have been issued. A final evaluation will be implemented at the end of TC PAM international appeal by IFRC CCST in Suva.

Federation-wide monitoring and reporting

Participating national societies and IFRC have agreed to work through a common planning framework for the TC Pam operation. A country recovery plan for Vanuatu has been prepared and includes national, multilateral as well as bilateral resources. It provides details on the geographical priorities and the estimated targets for each sector.

The first Federation-wide public report to mark the first anniversary of the cyclone has been completed in March 2016. This report captures the collective resources and achievements in the first year of the operation.



First public Federation-wide report to mark the first 12 months of the cyclone response

Operational progress

Relief response (closed)

During the relief phase, the IFRC distributed relief items to an estimated **43,880** people (8,776 households) across affected communities in Vanuatu, Tuvalu, Papua New Guinea, Kiribati and Solomon Islands².

Damage to shelter and associated sanitation facilities was significant, with approximately 18,000 households in need of assistance. In coordination with the Shelter cluster, emergency shelter work in Vanuatu focused on the distribution of shelter tool kits along with *shelter kit orientation*, which is a short session that shows the content of the toolkit and how to best make use of tarpaulins and make them last longer. A total of 28,435 people (5,687 households) were provided with emergency shelter materials during the relief phase.

The relief assessments and the distributions that followed were at their peak in the months of March and April 2015, with additional distributions in May and part of June of the same year. An estimated 39,915 people (7,983 households) have benefited from non-food items (NFI) distributions.

Total number of households provided with at least one type of essential non-food relief item

8,776



Vanuatu	7,983
Solomon Islands	172
Kiribati	106
Tuvalu	273
Papua New Guinea	242

² A revision of data from two national societies, namely Tuvalu and PNG have led to a decrease in the overall reported figure of households reached.

In **Kiribati**, a total of 106 households or an estimated 530 people were reached during the relief phase with emergency shelter materials including tarpaulins and hygiene kits.

The relief activities in the **Solomon Islands** focused on relief distributions reaching a total of 172 households (approximately 860 people).

The relief activities in **Tuvalu** focused on distribution of non-food items in the islands of Nanumea, Nanumaga, Niutao, Nui, Vaitupu, Nukufetau and Nukulaelaefor 1,365 people.

In **Papua New Guinea**, a total of 242 households or an estimated 1,210 people were reached during the relief phase with NFI distributions including water containers, tarpaulins and mosquito nets.

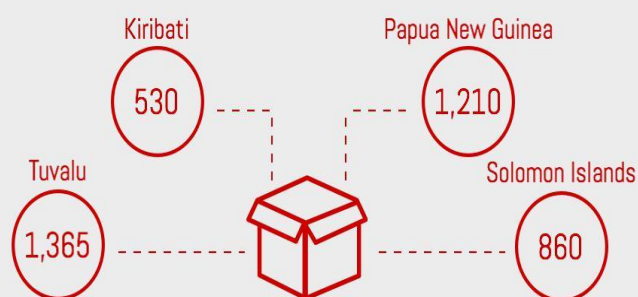
TC PAM REGIONAL RESPONSE

Solomon Islands | Papua New Guinea | Tuvalu | Kiribati

EMERGENCY RELIEF PHASE

3,695 people

provided with at least one type of essential non-food relief item



RECOVERY ASSISTANCE

SOLOMON ISLANDS		PAPUA NEW GUINEA	
1,811 people reached with hygiene promotion activities	39 volunteers trained in epidemic control	15 volunteers trained in safe shelter awareness	411 people reached with hygiene promotion activities
386 households covered with pre-positioned relief supplies in case of another disaster	3 Red Cross branches rebuilt or rehabilitated	20 volunteers trained in hygiene promotion	331 households covered with pre-positioned relief supplies in case of another disaster
18 volunteers trained in safe shelter awareness		15 volunteers trained in food preservation & gardening	
TUVALU		KIRIBATI	
13 rainwater harvesting systems constructed	138 households with increased access to safe water	63 people trained to provide first aid	150 households covered with pre-positioned relief supplies in case of another disaster
15 volunteers trained in safe shelter awareness	273 households covered with pre-positioned relief supplies in case of another disaster	15 volunteers trained in epidemic control	
	1,010 people reached with hygiene promotion activities	1,030 people reached with hygiene promotion activities	

CONTACT & FURTHER INFORMATION
Benoit Porte, IFRC Operations Manager
www.ifrc.org

International Federation of Red Cross and Red Crescent Societies

Recovery activities

- Vanuatu

Shelter and Settlements

A large percentage of the population with immediate shelter needs was reached during the relief early recovery stage, with an estimated 5,106 people (1,021 households) having received shelter toolkits as part of the early recovery assistance for shelter.

In the [Shelter Cluster's vulnerability and needs assessment report](#), there were key areas that were highlighted which include West Tanna and the Shepherd Islands. West Tanna was identified as one of the areas with the lowest prevalence of safe construction methods, including bracing of main structures, tying down of the various building elements and construction of adequate foundations.

Safer shelter awareness and fixing kits:

Following key recommendations from the Shelter Cluster's needs assessment, another key component of the shelter response activities has been the safer shelter awareness sessions and distribution of fixing kits for each household. In early November, in addition to **450 families** who had initially received a shelter tool kit and an awareness, a team of trainers and volunteers from VRCS commenced the facilitation of a series of 'Safer Shelter Awareness' workshops aimed at assisting **900 households** in communities across West Tanna to rebuild their homes in a way that they could better resist future natural disasters such as cyclones and earthquakes.

The island of Tanna was one of the worst affected by Cyclone Pam, and although fatalities were minimal, the Shelter Cluster's 'Shelter and Settlements Vulnerability Assessment' carried out in April, found that roofs and walls of around 70% of houses in rural areas of Tanna and around 40% of roofs and 30% of walls in urban areas of Tanna had been completely destroyed.

In an effort to assist these communities, the VRCS's shelter team has been working collaboratively with Shelter Cluster partners and local builders, and with support from Australian Aid and Australian Red Cross to facilitate the Safer Shelter Awareness workshops.



VRCS shelter team during one of the safer shelter awareness and community sharing kit distributions conducted in the Shepherd Islands. Photo: Sofia Lardies/ New Zealand Red Cross

These sessions came at an opportune moment, as families were repairing and strengthening their houses with renewed urgency in preparation for the next cyclone season, one which forecasters predict as particularly active as a result of the current El Nino event affecting Vanuatu.

The aim of the workshops is to build off existing knowledge and best traditional and modern construction practices present in communities, in order to equip all families with some of the technical know-how required to build strong, safe houses. The workshops focus on simple construction techniques around four key messages developed by the Vanuatu Shelter Cluster: strong connections between every part of the house to hold it down during a cyclone (*holem daon haos*), the inclusion of cross-bracing to hold the house up (*holem stret haos*), strong foundations and choosing a safe site.

At the conclusion of each workshop, a small supply of building materials (cyclone straps and nails) is provided to the families, allowing them to put theory into action as they reinforce their houses in preparation for the upcoming cyclone season. These additional construction materials, known as "fixing kits" are comprised of 6 kilograms of assorted nails and 10 metres of cyclone straps. Geographically, the shelter recovery work has focused in Tanna and the Shepherds islands, as these areas were the most severely affected by the cyclone.

In early November 2015, a team of Vanuatu Red Cross trainers and volunteers commenced the facilitation of a series of Safer Shelter Awareness workshops aimed at assisting 900 households in communities across West Tanna to rebuild their homes in a way that they will better resist future natural disasters such as cyclones and earthquakes. The awareness sessions were completed by mid-December to reach 900 households in 45 communities.

The workshops built off existing knowledge and best traditional and modern construction practices present in the communities, in order to equip all families with some of the technical know-how required to build stronger and safer houses. The workshops focus on simple construction techniques around four key messages developed by the Vanuatu Shelter Cluster: strong connections between every part of the house to hold it down during a cyclone (*holem daon haos*), the inclusion of cross-bracing to hold the house up (*holem stret haos*), strong foundations and choosing a safe site.

At the conclusion of each workshop, a small supply of building materials (cyclone straps and nails), along with a safer shelter booklet is provided to the families, allowing them to put theory into action.



A copy of Besik Konstraksen Hanbuk is distributed along with a fixing kit to a family in Leneai in West Tanna. Photo: IFRC

Community (sharing) tool kits:

The distribution of Sharing (community) Tool Kits, a recovery tool kit suited to the Ni-Van context to approximately **2,160 families** in 15 tribes representing 108 communities in West Tanna took place. The distributions were carried out according to the VRCS/IFRC strategy which has been commended by Tafea Provincial Government.



VRCS shelter team unload community sharing kits from the ferry for later distribution for 15 tribes across West Tanna. Photo: Vanuatu Red Cross Society

As of end of May 2016, community sharing tool kits, a recovery toolkit suited to the Ni-Van context, have now been provided to all village councils across West Tanna. This includes all 15 tribes comprised of approximately 2,160 households. The tools were distributed in two rounds, the first one to eleven tribes on 17 April 2016, and the second one to four tribes on 1 May 2016.

All tools were distributed to tribal leaders on arrival at the port in Bethel, Tanna, in order to avoid the necessity of warehousing (there are no suitable warehouses which are large enough), and to reduce the need for complex logistics. These distributions were carried out according to the VRCS/IFRC strategy, and based on agreed recommendations with the Tafea Provincial Government.

Monitoring of toolkit distributions

After all distributions had taken place, the shelter team contacted all chiefs, including those who had not travelled down to the port in Bethel to collect the tools at the time of distribution, to ensure that they had indeed received the tools. Every chief confirmed they had received the tools.

In order to arrange monitoring at community level to ensure that members of each village had access to the tools, the shelter team once again called all chiefs, where possible, to arrange a date for a monitoring visit. All chiefs were asked to inform community members of these dates and encourage their participation, as well as to take part in the meeting themselves. As the sharing tool kits were distributed at tribal and community levels

rather than at household level, focus group discussions took place with chiefs, women and men in the communities that were visited.

All of the tribes that were initially targeted in West Tanna were also reached through the monitoring visits (100 per cent). Of the total 108 communities within these tribes, a total of 30 (28 per cent) were sampled during these visits.

This same strategy is being applied since July to the Shepherds islands of Emae, Mataso and Makira. These activities are targeting **309 households** on building back safer awareness and distribution of fixing kits and **12 communities (240 households) with community (sharing) kits**. A monitoring will follow up before the end of the year.

The complex logistics and expense involved in procuring and transporting quality building materials to remote islands and communities in Vanuatu, makes repairing or rebuilding homes particularly challenging. A coordinated approach with communities and implementing agencies, and incorporation of locally found materials into the response has helped to ensure that the assistance reaches a larger number of affected households.

Within the French Red Cross project in North Tanna, 14 CDCCC shelter focal points have been trained in Build Back Better/Build Back Safer techniques by the Shelter Support Officer. Three (3) public awareness sessions have been conducted so far, with 259 people attending in total.

The BBB/BBS brochure has been finalized and final printings for large distribution have been launched. The first round of public awareness sessions was launched in 7 communities. In total, 485 community members (97 equivalent households) have attended public shelter awareness sessions in total since the beginning of the project. A Shelter Support Officer is now dedicated to the monitoring of these public shelter awareness sessions in communities.

The table below summarizes the related shelter work conducted in West / North Tanna and Shepherds to date:

Recovery indicators for Shelter		Total reached	Total planned	
Total number of households reached with safer shelter awareness sessions.	West Tanna (IFRC)	1,350	1,350	
	North Tanna (French RC)	97	500	
	Shepherds (IFRC)	309	309	
	Total	1,756	2,159	81%
Estimated number of households reached with Community sharing toolkits (approx. 1 community / 20 Households)	West Tanna (IFRC)	2,160	2,160	
	Shepherds (IFRC)	240	240	
	Total	2,400	2,400	100%
Grand Total of people reached by Shelter activities		20,780	22,795	91%

Almost two years after the cyclone, Vanuatu Red Cross Society, together with the Vanuatu Shelter Cluster and with support from IFRC, French Red Cross, Australian Red Cross, New Zealand Red Cross and a number of partner National Societies have almost ended the project (up to 91%) in assisting cyclone-affected communities in their recovery, with the Safer Shelter Awareness sessions playing a fundamental role in this process.

School rehabilitation and Kindergartens construction

Following recovery assessments, school rehabilitation work was identified as a key recovery activity and reflected in the IFRC plan and budget. IFRC work related to school rehabilitation has focused on three main schools:

1. School rehabilitation work for Buninga Senecol primary school on Buninga Island

Rehabilitation work has been **100% completed** at Buninga school, with all the necessary construction materials procured and shipped to the site before the end of January 2016. The rehabilitation work was completed in July 2016. The inauguration and the handover were done mid-July by the IFRC Shelter delegate.



Outside view of Buninga Senecol primary school in Buninga Island close to completion, May 2016. Photo: IFRC

2. School rehabilitation work for Worarana primary/high school in Nofo community on Emae Island

Rehabilitation of Nofo/Worarana School, Emae Island, Shepherd Islands, Shefa Province is **100% completed**. Rehabilitation was focusing on new roofing and supporting structures for two of the buildings that were affected by the cyclone. All construction materials assigned to this school have been procured and have been delivered to the construction site. A Memorandum of Understanding (MoU) between the school council and school communities, Ministry of Education and Training (MoET) and VRCS has been completed, and the technical designs to MoET have been submitted and approved.

The shelter team has started the rehabilitation end of 2016 and a final visit was done early 2017 to complete the project by paying the remaining workers' salaries and having the school committee sign a MoU which will have the remaining materials and tools given to the MoET and Nofo School. The MoU has been drafted and approved by the VRCS/IFRC and the MoET.

On 13 December 2016, the VRCS CEO signed a gift certificate for some 600 meters of surplus timber to the MoET to be used in school repair/reconstruction on various islands around Vanuatu. This timber is surplus after the Construction and WASH programmes have completed their supplies.



The picture above shows the two buildings in Nofo school that are rehabilitated by replacing the existing roofs and support structures. Photo: IFRC

3. School rehabilitation work for Eratap school in Efate Island

Rehabilitation of Eratap School, Efate Island, Shefa Province is **100% completed**. The MoU (Community Support and Resource Agreement) was signed by all parties on 19 April 2016. Final drawings were received from the structural engineer on 3 May 2016.



The picture above shows the Eratap school being rehabilitated. Before the rehabilitation work started, the community contributed to the process by cleaning the site and removing all remaining roof and wall linings from the structure. Photo: IFRC

The drawing package was submitted to Ministry of Education and Training on 4 May 2016. Formal approval to proceed was received on 13 May 2016. The construction on site, supervised by the Vanuatu Red Cross construction officer commenced on 16th May 2016 and ended in the second week of September 2016.

Kindergartens (French Red Cross):

This project is multi-faceted and includes DRR, WASH and Shelter activities for people affected by Cyclone Pam in North Tanna, Tafea. It reaches in total 5,290 beneficiaries and is funded through the IFRC appeal. One of the main objectives of the project is to build 16 Kindergartens which are multipurpose buildings and on occasions, as CDC (Community Disaster Committees) offices, safe refuge in case of disasters and school facility for children.



*Kindergarten French Red Cross / IFRC Appeal, North Tanna
December 2016, (Photo: FRC)*

The table below summarizes the work done for schools and Kindergartens constructions to date in Vanuatu:

Recovery indicators for Community and Social infrastructure	Total completed	In progress	Total planned	
Number of schools to be rebuilt or rehabilitated IFRC	3	0	3	100%
Number of dual-purpose Kindergartens / CDCs structures to be newly built French RC	4	4	16	25%

Health, Water, sanitation and hygiene promotion (WASH)

Water provision: In the first three months of the operation, the Red Cross Red Crescent reached an estimated 34,660 people with emergency support across all five countries, which included the distribution of hygiene kits and water containers. In Vanuatu, it is estimated that 68 per cent of rainwater harvesting catchment structures were destroyed, 70 per cent of wells were contaminated and 70 per cent of health facilities were damaged or destroyed. This sweeping devastation to key infrastructure meant that in the early days of the operation, providing people with safe drinking water, jerry cans and hygiene kits was imperative in order to prevent outbreaks of waterborne diseases and other illnesses.



Rainwater collection system built in Sasake community, Emae. Photo: New Zealand Red Cross

To address the longer-term needs of people in the affected countries, support is now focused on helping families repair their water sources and toilets, so the community can manage their own water and sanitation needs. To date, the Red Cross Red Crescent has increased access to safe water for **1,123** households in Vanuatu through the construction and rehabilitation of water sources such as rainwater collection structures and wells. Construction and rehabilitation of water and sanitation facilities has taken place in the islands of Moso, Paama, Mataso, Makira and Emae at household level during early recovery phase. Most of the water tanks installed are 6,000 litres in capacity. Construction and rehabilitation of water and sanitation infrastructure during the relief phase was focused on vulnerable households, health facilities, churches, women's clubs and affected schools. Construction and rehabilitation of water and sanitation infrastructure during the recovery phase is focusing on community-based solutions.

Procuring the necessary materials has taken some time because in many cases, items have had to be shipped in from nearby countries. However this work has been completed at household level for the early recovery, with **31 rainwater collection systems** newly built and another **186 rehabilitated** in the islands of Paama, Moso, Emae, Mataso and Makira, directly benefiting an estimated **4,340 people (868 households)**.

Sanitation: VRCS has delivered materials for **595 ventilated improved pit (VIP) latrines**. Up to 32 household latrines and six shared facilities have been completed in the islands of Paama and Mataso, 557 have been constructed in communities across Emae, Makira, Mataso and Paama. VIP latrines have been chosen as they are viewed to be the most hygienic dry toilet type known. They meet the Sustainable Development Goals (SDGs) of improved toilets and are recommended by the Ministry of Health and Rural Water Supply. In addition, 60 of the latrines will have an insert to convert them to pour flush latrines; this is being run as a trial as communities would often prefer odourless "wet" toilet styles.

A total of 7,405 people (88% of the final target) have benefitted from water catchments and sanitation installations as end of February 2017.

Hygiene promotion: Increasing community resilience through health education, hygiene promotion and first-aid trainings has also been a constant activity. As part of the recovery efforts, the team has been implementing activities in line with PHAST as well as CBHFA approaches, both of which are critical to building up the resilience of the population and ensuring the sustainability of WASH infrastructure projects

Over the past year during the relief and early recovery phase, **the Red Cross hygiene promotion activities have reached an estimated 5,198 people in Vanuatu.** These activities have included awareness sessions on hand washing and the use of *Tipi Taps*, which are portable wooden structures with a bottle of water and soap that releases water for hand washing. Information, education and communication materials such as leaflets and posters have also been distributed to help explain the risks communities face and to share simple tips and advice. In addition, National Societies have prioritised volunteers training in hygiene promotion, whereby more volunteers have been trained and sustained to increase reach of communities with regards to WASH interventions. Across all five countries, newly-trained volunteers have been travelling to remote island communities to equip local populations with the information they need to keep themselves safe and well.

VRCS is implementing the **Participatory hygiene and sanitation transformation (PHAST)** methodology in 33 communities in the islands of Emae, Makira, Mataso, Moso and Paama, targeting a total of **3,668 people** as part of WASH recovery activities. PHAST seeks to help communities improve hygiene behaviours, prevent diarrheal diseases and increase community management of water and sanitation facilities. PHAST is a 7-steps process. Communities have implemented the 7 steps meaning: Problem identification, problem analysis, planning for solutions, selecting the options, planning for new facilities and behaviour change, planning for monitoring and evaluation. The 7th step which is: “Participatory evaluation” has been implemented over the last three months. The use of information, education and communication (IEC) materials have been a key contribution to support the work of Vanuatu Red Cross Society in promoting hygiene and safe water practices in the targeted communities.



*PHAST methodology STEP 6 in Emae.
Photo: IFRC*

CBHFA (Community Based Health First Aid): The community based health and first aid training, involves training community members in dealing with basic incident or accidents that are common. VRCS has trained 10 participants from each of the 33 communities. A total target of **330 participants** trained has there been achieved. These are chosen by the chiefs but must have gender balance. The course is theory and practical and includes dealing with burns, fractures, bleeding, drowning and performing CPR. Health based topics like nutrition and water-borne diseases are covered.

The training of trainers following the basic training has been concluded, with the best learners being trained in the same topics in more depth for two days and training on facilitation for three days. Ten (10) trainers were trained from Paama island and 10 from the Shepherds islands for **a total of 20 trainers.**

With the effects of El Niño already affecting people in Vanuatu, supporting the resilience building efforts of communities and helping people to stay healthy is of even greater importance. In addition to Cyclone Pam recovery work, the drought caused by El Niño has prompted Red Cross Red Crescent water and sanitation teams to refocus some recovery activities to respond to drought-affected communities in the Shepherds and Tanna islands. To address the urgent need for water in these areas, the rehabilitation of already existing wells, along with training these communities about how to maintain them was carried out.

- *French Red Cross wash activities inside the IFRC Appeal still to achieve to finalise the Appeal:*

<i>Rehabilitated water systems French RC</i>	<i>Reached 0</i>	<i>Planned 35</i>
----------------------------------------------	------------------	-------------------

Gravity feed system (GFS)

A GFS support officer was recruited to strengthen the WASH team in North Tanna to build the three GFS systems. The logistics team and WASH delegate followed-up on tender for equipment and materials. Works will start upon material delivery.

Elections to choose water committee members took place in Ipneme and Lamakaon communities. Two sub committees were created in Imafen and in Lounimapan. Trainings for water committees have started. Materials and equipment for GFS will be delivered at the beginning of March.

MOUs for the use of GFS were developed. They were signed by community representatives, Rural Water Supply for Tafea Province, and land owners.

Rain water harvesting system (RWHS)

A RWHS site manager was recruited this month. Part of the RWHS material has been delivered, and the WASH delegate followed-up on remaining material requisition. Assessments to determine the locations of the 16 extra RWHS (apart from those installed with the 16 kindergartens) are underway. Works for the 16 RWHS to be installed with kindergartens have started in Eniu, Eluai, Fetukai, and Laketam communities.

<i>Shared facility French RC (schools)</i>	<i>Reached 0</i>	<i>Planned 16</i>
--------------------------------------------	------------------	-------------------

The WASH delegate is still working on the design of latrines in collaboration with the FRC Regional WASH technical advisor. A design was chosen. The procurement process has started the purchase of materials and equipment for latrines and hand washing stations for kindergartens.

<i>Number of people reached with hygiene promotion activities French RC</i>	<i>Reached 0</i>	<i>Planned 5,310</i>
-----------------------------------------------------------------------------	------------------	----------------------

The DRR pool defined a hygiene promotion (HP) strategy – to work with schools and churches on three key elements: hand washing, water management and handling of food – and adapted HP tools to come up with a set of images and posters for trainers. Final printings will be launched after the tools are tested with community members and students and adjusted according to remarks and recommendations. A HP support officer was recruited and undertook one-week training in Port-Vila with the VRCS/FRC WASH team before heading to North Tanna.

Preparatory work has started in the field after a visit of all communities by the HP support officer in coordination with the DRR support officer: preparation of trainings, meeting with school representatives, etc. The HP support officer took part in PHAST training.

<i>Number of people reached with CBHFA training French RC</i>	<i>Reached 90</i>	<i>Planned 160</i>
---------------------------------------------------------------	-------------------	--------------------

First-aid trainings have started mid-February for CDCCC and community members. Trainings have already been conducted in nine communities (ten trainees per community). The first-aid mission is carried out by two VRCS accredited trainers and will last until the end of March 2017.

The table below summarizes the work done in water and sanitation to date in Vanuatu:

WASH and Health recovery indicators		Total reached	Total planned	
Number of operational household rain water harvesting systems newly built or rehabilitated	<i>Newly built water systems IFRC</i>	31	31	
	<i>Rehabilitated water systems IFRC</i>	186	186	
	<i>Rehabilitated water systems French RC</i>	0	35	
	Total	217	252	
Number of newly constructed sanitation facilities	<i>Household facility IFRC</i>	589	589	
	<i>Shared facility IFRC</i>	6	6	
	<i>Shared facility French RC (schools)</i>	0	16	
	Total	595	611	
Total number of people reached with water sources , rain water systems and sanitation facilities (1 household / 5 people; 1 community/ 20 people)		7,405	8425	88%
<i>Number of people reached with hygiene promotion activities IFRC</i>		5198	5,198	
<i>Number of people reached with hygiene promotion activities French RC</i>		0	5,310	
Total number of people reached with hygiene promotion activities		5,198	10,508	49%
Number of people reached with PHAST activities IFRC		3668	3,668	100%
<i>Number of people reached with CBHFA training IFRC</i>		20	20	
<i>Number of people reached with CBHFA training French RC</i>		90	160	
Total number of people to be trained in CBHFA		110	180	61%
Number of people reached with community first aid activities IFRC		330	330	100%
Total number of people reached by community awareness activities		9,306	14,686	63%
Grand Total of people reached by WASH activities		16,711	23,111	72%

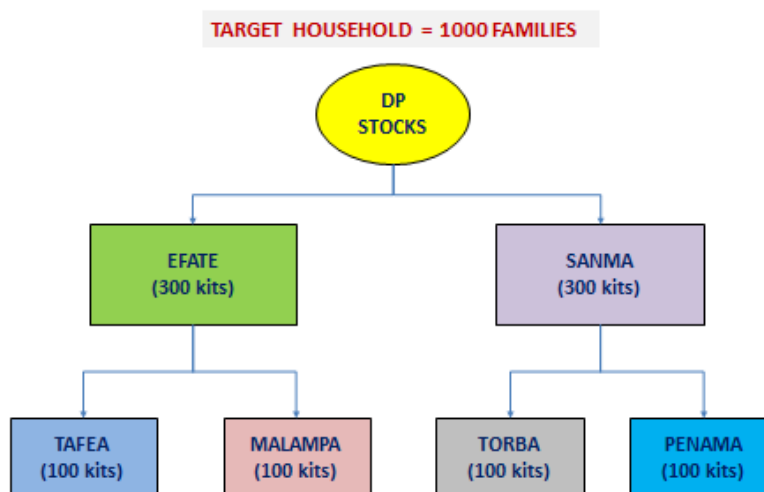
Disaster preparedness and risk reduction

In the island of Tanna, the Vanuatu Red Cross with the support of French Red Cross is initiating a Disaster Risk Reduction (DRR) and shelter project. So far there has been the creation and registration of 16 Community disaster committees (CDCs) (Community Disaster Committees) within North Tanna. These **16 communities** have benefitted from Vulnerability Capacity Assessment (VCA) training. The TC Pam operation team and climate change advisor from the Red Cross Climate Centre have also supported the Vanuatu Red Cross Society to update its contingency plan for El Niño. Replenishment of disaster preparedness stocks are completed with the arrival of an additional set of **300 households sets of kits** (Hygiene kits, Kitchen sets, tarpaulins and Shelter tools kits) purchased through the regional logistics unit (RLU) in Kuala Lumpur, in order to prepare for the 2016-2017 cyclone season. The overall logistic strategy of the National Society is now completed and is based on the below:

NFI stocks position in country (Donor: IFRC, Aus RC, VRCS) including Port Vila and five branches:

Item group	Grand total	Stocks in Pipeline	Stocks in country
Blanket	1321	-	1321
Hygiene kit	948	-	948
Jerrycan	1685	-	1685
Kitchen set	1510	-	1510
Shelter tool kit	1038	-	1038
Sleeping mat	1234	-	1234
Solar Lanterns	514	-	514
Tarpaulin	1046	-	1046

Disaster Management department of Vanuatu Red Cross plan to keep minimum 1,000 family stocks in six provinces for response preparedness in any future disaster. VRCS DM was supported to draft its country stock strategy.



Livelihoods

The Government of Vanuatu estimates that the livelihoods of 40,800 households across Vanuatu have been affected and that VT 1.6 billion (approximately CHF 139.8 million) of personal income has been lost.

Cyclone Pam affected people's livelihoods in a variety of ways. For some, the gale-force winds and deluges of rain led to the loss of crops and livestock. For others, physical assets such as tools and equipment used to make a living were damaged or destroyed.

The ability to bring in an income is fundamental to communities being able to take charge of their lives and of their own recovery. In recognition of this, recovery operations in Vanuatu include a project that teaches livelihood skills to young women. Targeting young women aged 15 to 19, the project provides participants with intensive training to help restore and diversify their opportunities for income generation.



In Vanuatu, young women from Takara village in Efate Island learn how to paint popular designs on fabric to sell at local handicraft markets.

A total of **86 young women** from rural and semi-rural areas of Efate Island in Vanuatu have been trained. The estimated number of Indirect Beneficiaries is 489 (Families' beneficiaries who directly benefit from the income generated by the participants or people whom the participants shared their knowledge/skill with). Ninety (90) per cent of participants have registered as VRCS volunteers and 22 per cent of participants who sign up as VRCS volunteers participate in VRCS activities. It is reported that 56 per cent have generated an income for their families using skills learned from the training. From 2015 to July 2016, the Livelihoods project worked with a total of **16 communities**.

At the end of August 2016, a peer review of this project took place with support from the IFRC AP regional office and Australian Red Cross country manager for Vanuatu based in Melbourne. This peer review resulted in a set of recommendations for an improved second phase aimed at improving the social and economic empowerment of the ladies targeted. Key recommendations included:

1. To target mostly young women from urban areas, as the previous phase targeted young women living in rural areas.
2. Work with a smaller sample of target beneficiaries in order to ensure a better impact on their lives.
3. Integrate a stronger market analysis to define more accurately professional orientations.
4. Outsource professional trainings based on a wider research of potential partners.
5. Ensure follow up with beneficiaries that have completed the training to facilitate their entry into the workforce.
6. Improve second phase of project through integration of value for money indicators.

Australian Red Cross and IFRC will partner for the second phase of implementation of this livelihoods project:

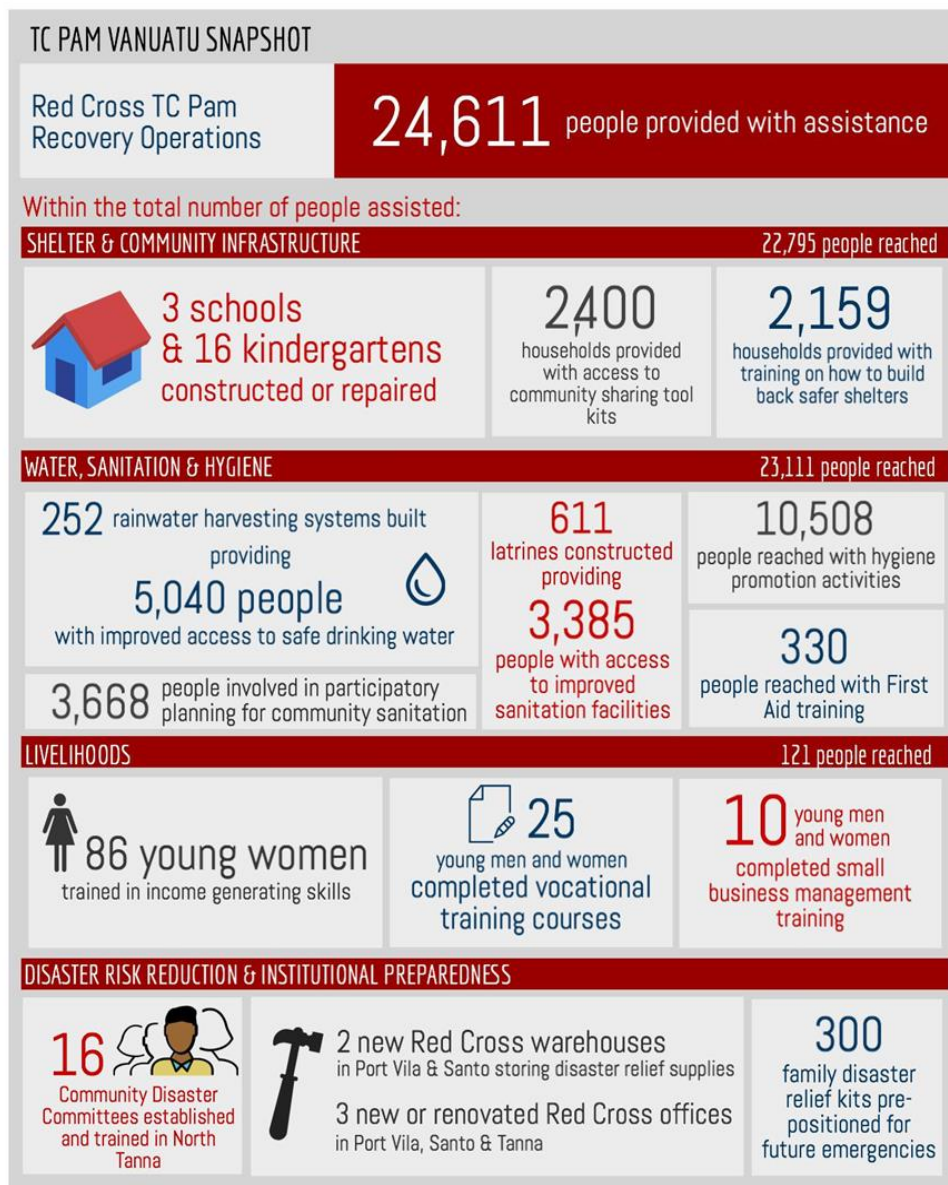
- In the beginning of January 2016, MOUs were signed with various stakeholders that would be involved with the Livelihoods project. Vanuatu Institute of Technology will provide technical training in areas of Tourism, Business Administration and Building/Construction. The Department of Cooperatives will provide small business management trainings and potential mentors to mentor participants on a three months basis.
- Application forms which were distributed in December were completed and submitted to project staff. A total of 50 applications were received and 43 of them were shortlisted for interviews.
- Group interviews were conducted on 10- 11 January. Panelists were Red Cross staff, VIT staff and Cooperatives staff. Participants went through group interviews and then individual interviews.

- Out of the 43 shortlisted for interviews, 35 were selected - 25 for technical and 10 for small business management training.
- Out of the 35 participants, there were 20 women and 15 men.
- From 16 to 20 January, selected participants, stakeholders and mentors attended orientation meetings where project information was given as well as expectations, roles and responsibilities.
- Each of these groups signed Partnership Agreement Forms and Code of Conduct.
- Participants for technical training have commenced classes on 23 January and will continue for a total of four weeks along with one month work placement.
- Small business management participants will commence class on 6 February also for a four week period along with work placement if requested.
- There are 12 participants in tourism, 7 for business administration, 6 in construction and 10 in small business management.
- One woman has applied to do Building Construction out of the 19 women who applied for other courses.
- There is a total of 11 mentors who have volunteered their time to mentor these participants in each of the sectors.
- The mentor ratio is one mentor to 3 or 4 participants.
- Each mentor will have six meetings with each of their mentees over the three months period.
- After completing technical trainings, participants will also go through job seeker training and First Aid training.

The table below summarizes the work done in Livelihood to date in Vanuatu:

Livelihood	Total reached	In progress	Total planned	
Number of women trained (phase 1)	86	0	86	
Number of vocational trainings (phase 2)	0	25	25	
Number of small business trained members (phase 2)	0	10	10	
Total number of beneficiaries trained by Livelihood Prog.	86	0	121	71%

The infographic below provides a quick overview of **the FINAL TARGETS** of recovery activities in Vanuatu:



Strengthening of the National Society

The Branch Organizational Capacity Assessment (BOCA) was conducted in all five VRCS provincial Branches (Tafea, Malampa, Torba, Sanma, Penama provinces) by IFRC CCST Organizational Development (OD) delegate jointly with the VRCS President and the VRCS OD focal point.

The purpose of this five-week workshop (June-July 2016) was to enhance the capacity of the VRCS Branches in understanding their roles and responsibilities within the National Society, to refresh knowledge and understanding on RCRC Movement and on VRCS HQ mandate and role in line with responsibilities of Branches.

The BOCA process has contributed to develop community action plans to conduct meaningful Branch-led community based initiatives on a more regular basis. It has also enhanced the capacity of the Branches in the area of Disaster preparedness, response and risk reduction in addition to developing local partnerships with local level government authorities and corporate sector by deepening auxiliary role.

An OCAC-BOCA meeting was organized **end of November 2016** to have the outcomes of the OCAC and to have a brief on the outcomes of the five weeks BOCA mission.

The OCAC presentation was made by VRCS CEO. She presented the findings of the OCAC report and cited possible responses from various NS on their approaches to OCAC. She then discussed the progress made by VRCS to date about OCAC.

VRCS CEO also made available the OCAC indicator report and requested the IFRC Pacific NS delegate to explain the indicators. He explained clearly what the indicators meant and the system to put in place to improve the situation.

The BOCA presentation was made by VRCS organizational development coordinator.

The BOCA presentation started with the presentation of the Characteristics of a “Well-Functioning Society” followed by the presentation of the BOCA tool and how the BOCA process has been conducted. After that experiences were shared about the BOCA engagements from the VRCS president, TAFEA chairman, SANMA committee member and PENAMA Branch officer.

Next the BOCA findings report was presented in the order of: 32 Attributes, Priority Highlights, and 17 Areas for Improvement.

The BOCA findings report was then shared to the participants divided into three groups to deliberate over to see if they feel adjustments were needed. But no further adjustment was needed to be made.

For the Way Forward, two decisions were agreed upon by the group:

1. That the Provincial Branches should develop and submit their Annual Plan for 2017 by 20 January 2017 which is finally delayed to end of March 2017.
2. That a new Committee be formed to develop a BOCA and OCAC plan in January. The committee will be chaired by the president and the OD coordinator to provide the secretarial support. The other two members of the committee will comprise the VRCS CEO and Committee Member of Sanma .

Results-based management (RBM, Planning in emergencies training and simulation exercises

From 18-22 July, VRCS and IFRC jointly organized a Results-based management (RBM) and planning in emergencies training. The purpose of the training was to contribute to VRCS ability to apply RBM in its response to the needs of the more vulnerable with greater efficiency and to contribute to the human development through its projects and programmes. In addition, the training aimed to familiarize participants with planning in emergencies, as well as the Disaster relief emergency fund (DREF) as a disaster response mechanism.

The RBM module of the training was co-facilitated by the TC Pam PMER delegate (IFRC) as well as the VRCS reporting coordinator and focused on programme planning and monitoring methodologies. The module on planning in emergencies was co-facilitated by the IFRC CCST Suva disaster management team and PMER delegate focused on the use of DREF as well as emergency plan of action (EPoA) template. A total of **16 participants** from VRCS attended the training, including branch officers from Sanma and Tafea branches.

As a consequence of this training, for the first time, VRCS was able to independently draft and send its first DREF request in **January 2017** for the Dengue outbreak occurring in Vanuatu to the IFRC CCST Suva.



A results-based management and planning in emergencies training took place from 18-22 July. A total of 16 VRCS members successfully completed the training. Photo: IFRC

Improving VRCS infrastructure and storage capacity

After three months of construction, the new VRCS warehouse in Port Vila has been completed. Work has also started for a second warehouse for the VRCS Sanma branch in Luganville, Santo Island.



A new VRCS warehouse has been completed in mid-August 2016 and has been immediately put to use to store NFIs and construction materials for the WASH programme. A second warehouse is under construction for the VRCS branch office in Luganville, Santo Island. Photo: Francisco Fong/IFRC.



The VRCS Tafea branch office was completed in July 2016. IFRC and VRCS are currently building an annex to the building and will be used as additional office space for the VRCS and French Red Cross team in West Tanna. The new annex is expected to be completed by November 2016. Photo: Robbie Dodds/ Australian Red Cross

IFRC has built as well an additional building in Santo that will be used as the branch office to allow for working space for the VRCS Branch staff who is currently working in a public building. Rehabilitation of the main VRCS headquarter building in Port Vila has ended in December 2016. Tanna Red Cross branch construction is now over while IFRC has decided to also build a small annex building on the same ground for the branch to host properly PNS teams (Australian Red Cross and French Red Cross) working in Tanna.



Both Santo Warehouse and annex building 100% completed: February 2016, (Photo: IFRC)

Institutional Preparedness	Total completed	Total planned
Tanna RC Branch construction	100%	1
Tanna RC Annex building	100%	1
Santo RC Branch construction	100%	1
Santo RC Warehouse	100%	1
Port Vila RC HQ Warehouse	100%	1
Port Vila RC HQ Renovation	100%	1

Kiribati

The recovery effort in Kiribati has been largely concentrated in Tamana and has focused mainly on shelter assistance to households whose houses were damaged or destroyed, as well as water, sanitation and hygiene promotion.

A total of 15 Kiribati Red Cross Society (KRCS) members have been trained in epidemic control for volunteers (ECV) and to date, a total of 1,030 people have been reached across affected communities in Arorae, Tamana, Onotoa, Nonouti and Tarawa with hygiene promotion activities. In collaboration with the Ministry of Health, the ECV toolkit has been adapted to the Pacific context and translated into Kiribati language. Final approval of the translation is pending from the Ministry of Health, and once received will be reprinted in Kiribati language.

First aid training was also conducted in Tamana Island in April 2016. The training was done to Tamana branch volunteers, teachers, youth, community members and staff from the island council participated. A total of 63 community volunteers participated in this training.

Most of the shelter and recovery materials have been procured and have arrived in Kiribati. Additional materials were procured from Fiji. Due to challenges in the implementation of the shelter project in Tamana, a transition strategy is being agreed with KRCS. The use of the remaining materials are to be agreed with the community, and additional procurement of chain saw, rope and circular saw (as recommended by IFRC shelter delegate) to be handed over to the community for them to use with the remaining timber posts. A second visit to the community is required by KRCS with support from IFRC to conduct a VCA process, and potentially safe shelter awareness training with the community and handover the equipment.

Disaster preparedness (DP) stocks have been replenished to strengthen the KRCS capacity to respond to future emergencies. According to KRCS estimates, 150 households would be covered by pre-positioned stocks in case of a new disaster. A generator has also been purchased to ensure that operations in the head office can continue despite the frequent power outages.

Recovery indicators for Kiribati - 99% progress

Final operational data for TC PAM Recovery:

WASH and Health	Total reached	Total planned
Number of volunteers trained in epidemic control (ECV)	15	15
Number of people reached with hygiene promotion activities	1,030	1,030
Number of people trained to provide first aid	63	63
Disaster preparedness and risk reduction		
Number of households to be covered with pre-positioned non-food items in case of future emergency	150	150

Solomon Islands

Recovery activities took place mostly in Temotu Province, where hygiene promotion has been the main focus. Hygiene Promotion Refresher courses were carried for 39 volunteers. Following this training, in the Reef outer islands and in Malaita province, a total of 1,811 people have been reached with hygiene promotion activities.

Replenishment of disaster preparedness (DP) stocks for pre-positioning has also been completed and an estimated 386 households are expected to be covered by these NFIs. 18 volunteers were trained in December 2016 on a PASSA training by the shelter delegate from the IFRC CCST Suva.

In addition, the Solomon Islands Red Cross Society (SIRCS) has been focusing on the rehabilitation of three branch buildings including the Lata, Auki and Gizo branches. Work has been completed in the third quarter of 2016.

Recovery indicators for Solomon Islands - 99% progress

Final operational datas for TC PAM Recovery:

Water and Sanitation	Total reached	Total planned
Number of volunteers trained in epidemic control (ECV)	39	39
Number of people reached with hygiene promotion activities	1,811	1,811
Disaster preparedness and risk reduction		
Number of households to be covered with pre-positioned non-food items in case of future emergency	386	386
Number of volunteers trained on Safe Shelter Awareness Training(PASSA)	18	18
National society strengthening		
Number of SIRCS regional branches rebuilt or rehabilitated	3	3

Tuvalu

A total of 13 rainwater harvesting systems (RWHS) have been rehabilitated, benefiting an estimated 138 households or 540 direct beneficiaries in the same target islands. A vegetable garden is being piloted in Funafuti atolls to produce additional vegetables for the community and promote healthy eating.

In collaboration with the Ministry of Health, the ECV toolkit adapted and translated into the local language. Final approval of the translation is pending from the Ministry of Health, and once received will be reprinted in Tuvalu language.

Disaster preparedness and risk reduction activities have included training a total of 30 community members in the Vulnerability and Capacity Assessment (VCA) methodology in Vaitupu and Funafuti. In addition to the VCA training, procurement and delivery of personal protection equipment (PPE) kits have been completed to equip a total of 70 Tuvalu Red Cross Society (TRCS) members. Each PPE kit consists of a high-visibility vest, rain poncho, backpack, waterproof clipboard, and lifejacket and safety gloves. Lastly 15 volunteers were trained on PASSA by the IFRC CCST Suva shelter delegate.

Procurement of air-conditioning and installation equipment, fire safety equipment and a fax machine were implemented by IFRC Vanuatu country office in January 2017 and there is still a BOCA training to be achieved by the IFRC CCST Suva in March 2017.

Recovery indicators for Tuvalu - 92% progress

Final operational data for TC PAM Recovery:

Water and sanitation		
Number of households with increased access to safe water through the construction or rehabilitation of water sources following initial assessments		138
Number of operational rain water harvesting systems newly built or rehabilitated	<i>Newly built</i>	0
	<i>Rehabilitated</i>	13
Number of people reached with hygiene promotion activities		1,010
Disaster preparedness and risk reduction		
Number of households covered with pre-positioned non-food items in case of future emergency		273
Number of volunteers trained on Safe Shelter Awareness Training(PASSA)		15

Papua New Guinea

Water and sanitation recovery activities commenced with hygiene promotion training for Papua New Guinea Red Cross Society (PNGRCS) volunteers in July following joint multisector assessments by the Local Level Government officials, PNGRCS branch volunteers, Agricultural officers and the NGOs in the area. This resulted in training of volunteers have since conducted hygiene promotion activities in twelve target communities, reaching a total of 411 beneficiaries. Gender-based violence (GBV) assessments have been undertaken in the same twelve communities.

In addition to activities conducted in West New Britain, the Red Cross National Emergency Operation Centre (NEOC) in collaboration with the PNG Government National Disaster Centre has since July 2015, been monitoring an El Nino drought event that is currently affecting the country. The drought was forecasted to continue until the first quarter of 2016. Hence it was crucial that TC Pam recovery activities took into consideration the prolonged dry conditions and the expected flooding to affect the same at the end of the droughts.

The National Disaster Centre (NDC) summary updates revealed that almost all of the Highlands Provinces were on Category 3 and 4 of the Government's Drought response category. This indicates that conditions are difficult with reduced food availability and security, with some famine food being eaten, and water available only at distance. A WASH delegate from the IFRC CCST was deployed to support PNGRCS in its response. To support integrated response planning in WASH and hygiene promotion between TC Pam recovery and Drought response, a field delegate worked with the PNGRC disaster management team for two weeks. PNG budget under TC Pam appeal has been handed over directly to the new IFRC PNG head of country office in November 2016. The implementation of the last objectives to start in March 2017 and to be achieved by end of September 2017.

Based on an agreed plan with PNG RC, there is approximately CHF 132 000 as end of February, to be utilised for TC PAM on OD measures, WASH and food security activities.

Recovery indicators for Papua New Guinea - 62% progress

Operational datas for TC PAM Recovery:

Water and sanitation	Total reached	Total planned
Number of people reached with hygiene promotion activities	411	411
Disaster preparedness		
Number of households covered with pre-positioned non-food items in case of future emergency	331	331
Number of volunteers trained on hygiene promotion	0	20
Number of volunteers trained on Safe Shelter Awareness Training (PASSA)	0	15
Number of volunteers trained in food preservation and gardening	0	15

Community Engagement

The Red Cross has shown commitment to engaging with affected communities in the affected countries. These engagements have included monitoring visits where community assessments, KAP surveys, focus group discussions and beneficiary satisfaction surveys have been utilized to collect feedback from the communities.

In Vanuatu, the results of feedback mechanisms done by sampling with beneficiary satisfaction surveys have shown that **85 per cent** of surveyed households have completed substantial repairs to their shelters, thanks in part to shelter toolkits, fixing kits and other materials distributed by the Red Cross Red Crescent. This is important feedback as the safe shelter awareness strategy was designed specifically to ensure that communities could take control of their own recovery by rebuilding their homes as quickly and as safely as possible.

The process has been challenging as it required lot of coordination, but the strong involvement of the communities from the beginning of the process has enabled VRCS to sample **300 households out of the 900** that received the safer shelter awareness sessions in West Tanna, enabling a high level of confidence in the survey findings.

Overall, the information collected from the affected communities strongly suggests that the shelter response has been relevant in its design while at the same time meeting the immediate emergency shelter needs of the affected population³. In addition, comprehensive baseline assessments have been completed in the islands of Tanna, Paama, Emae, Mataso, Makira, Moso and Lelepa. To date, a total of **5,009 people** were sampled and the data collected has been a key factor to improve programme design and inform management decisions. All IFRC project implementation has been finalised and last monitoring visit has taken place in January 2017 to ensure that all field achievements were effective.

Beneficiary satisfaction surveys have also been completed in Vanuatu, and Kiribati, with National Society volunteers visiting affected communities to ask people how useful they had found the relief items distributed and to question how things could have been improved. This valuable feedback is playing an important role in improving service delivery for recovery activities and for future emergencies.



*Provincial Government Officer,
Isangel, Tanna Chiefs of Latakren
Tribal Council discuss how tools
distributed at tribal level will be
distributed among the various
communities of Latakren,
West Tanna.
April 2016
(Photo: Robert Dodds, IFRC)*

The tables below provide a summary of the programmatic **final targets planned** (and all reached as of today except for FRC project) on common activities across the five countries covered in this appeal:

TC PAM Global Relief Response:

Across 5 countries affected: 43,880 people reached.

Relief Operation: Total number of people provided with at least one type of essential non-food relief items	Total reached
Number of people reached in Vanuatu	39,915
Number of people reached in Solomon islands	860
Number of people reached in Kiribati	530
Number of people reached in Tuvalu	1,365
Number of people reached in Papua New Guinea	1,210

TC PAM Global Recovery Response:

Across 5 countries affected : 34,573 people reached.

Recovery Operation: Total number of people provided with at least one type of recovery services	Total reached
Number of people reached in Vanuatu	24,611
Number of people reached in Solomon islands	3,741
Number of people reached in Kiribati	1,780
Number of people reached in Tuvalu	2,375
Number of people reached in Papua New Guinea	2,066

Logistics and supply chain

Logistics activities aimed to effectively manage the supply chain, including mobilization, procurement, customs clearance, fleet, storage and transport to distribution sites in accordance with the operation's requirements and aligned to IFRC's logistics standards, processes and procedures.

The logistics delegate was based in Vanuatu and trained VRCS logistics team. Logistics capacity of the NS has been improved throughout the operation by organizing logistics training and implementing IFRC Logistics software *Logic* in VRCS to improve their logistics management system. Further, the operation supported NS to establish two prefabricated steel warehouses with the capacity for around two thousand IFRC standard NFI packages in two major provinces in Vanuatu.

As of this reporting period, all logistics requirements have been achieved and IFRC logistics delegate has handed over a logistic strategy as well as trained a VRCS team in country to take over all required tasks.

Constraints or Challenges

- High demand of recovery materials with limited suppliers has been a challenge. Shipments to remote islands have also been difficult due to limited number of boat transport service providers, erratic shipping schedules, very high cost and bad weather conditions. This has caused delays in boat deliveries and directly impacts the implementation of activities, in particular for Kiribati.
- In Vanuatu, many suppliers do not deliver agreed items on tenders and purchase order
- Local procurement was affected due to limited number of local suppliers as well as suppliers challenges to get supplies due to unstable supply chain. Due to these challenges some delays were faced to deliver requested materials to meet operational timelines.



*Logistics challenge during unloading WASH goods at Emae Island, Shepherds.
August 2016 (Photo: Ashfaque Ahmed, IFRC)*

Financial overview of the TC PAM Operation (as of end of January 2017):

Activity	Revised Budget amount in CHF (incl PSSR)	% Total	Expenses in CHF (incl PSSR)	% Expenses VS budget
Assessment	567,645	10%	567,984	100%
Shelter Emergency	455,204	8%	453,902	100%
Shelter recovery	942,805	16%	886,840	94%
Health and care	181,767	3%	171,522	94%
WASH	868,994	15%	695,498	80%
Livelihood and life skills	149,633	3%	96,092	64%
Institutional preparedness	402,038	7%	430,424	107%
Disaster risk reduction	239,890	4%	199,842	83%
NS operation cost	499,650	8%	525,084	105%
IFRC / FRC operation costs	314,244	5%	266,145	85%
IFRC / FRC coordination delegates cost	1,273,534	22%	1,203,342	94%
Total Vanuatu	5,895,404	100%	5,496,675	93%

Vanuatu	5,895,404	73%	5,496,675	93%
Kiribati	240,561	3%	237,153	99%
PNG	346,118	4%	214,595	62%
Solomon	144,925	2%	143,950	99%
Tuvalu	231,228	3%	215,970	93%
CCST	918,835	11%	880,008	96%
Shelter Cluster	247,506	3%	247,506	100%
Total TC PAM	8,024,577	100%	7,435,858	93%

Reference documents

Click [here](#) for the International Appeal and EPoA

[here](#) for the revised (1st) International Appeal budget

[here](#) for the revised (2nd) International Appeal budget

[here](#) for the financial report as at 28 February 2017

[here](#) to return to title page

Contact Information

For further information specifically related to this operation please contact:

In the National Societies

Kiribati Red Cross Society (phone +686 22501):

Depweh Kanono, secretary general, email: depwehkanono@gmail.com
Ueraoi Taniera, DM officer, email: u.taniera@gmail.com

Papua New Guinea Red Cross Society (phone +675 325 7016):

Allison Dage, interim secretary general, email: alisondage.pngrcs@gmail.com
Michael Sembenombo, DM officer, email: msembenombo@gmail.com

Solomon Islands Red Cross Society (phone +688 20706):

Joanne Zoleveke, secretary general, email: secgen@redcross.org.sb
Clement Manuri, deputy secretary general, email: depsecgen@redcross.org.sb

Tuvalu Red Cross Society (phone +688 20706):

Sopoanga Saufatu, Secretary General, email: lolipukupuku@gmail.com
Tusialofa Finikaso, DM officer, email: t_finikaso@yahoo.com

Vanuatu Red Cross Society (phone +678 272 58):

Jacqueline De Gaillande, chief executive officer, email: ceo@redcrossvanuatu.com
Augustine Garae, DM officer, email: disaster-redcross@vanuatu.com.vu

IFRC country office, Vanuatu (phone +678 710 9454):

Benoit Porte, operations manager; email: benoit.porte@ifrc.org
Francisco Fong, PMER delegate; email: franco.fong@ifrc.org

IFRC country cluster support team, Suva (phone +679 3311 855):

Kathryn Clarkson, head of CCST;
email: kathryn.clarkson@ifrc.org

IFRC Asia Pacific regional office, Kuala Lumpur (phone: +60 3 9207 5700):

Martin Faller, deputy regional director; email: martin.faller@ifrc.org
Sanna Salmela-Eckstein, operations coordinator; email: sanna.salmela@ifrc.org
Patrick Fuller, communications manager; email: patrick.fuller@ifrc.org
Riku Assamaki, regional logistics coordinator; email: riku.assamaki@ifrc.org
Rachna Narang, senior relationship officer; email: rachna.narang@ifrc.org
Clarence Sim, PMER coordinator; email: clarence.sim@ifrc.org

IFRC Geneva:

Susil Perera, senior officer, response and recovery; email: susil.perera@ifrc.org
Cristina Estrada, response and recovery lead; email: cristina.estrada@ifrc.org

How we work

All IFRC assistance seeks to adhere to the **Code of Conduct** for the International Red Cross and Red Crescent Movement and Non-Governmental Organizations (NGO's) in Disaster Relief and the **Humanitarian Charter and Minimum Standards in Humanitarian Response (Sphere)** in delivering assistance to the most vulnerable. The IFRC's vision is to inspire, **encourage, facilitate and promote at all times all forms of humanitarian activities** by National Societies, with a view to **preventing and alleviating human suffering**, and thereby contributing to the maintenance and promotion of human dignity and peace in the world.

The IFRC's work is guided by Strategy 2020 which puts forward three strategic aims:



Save lives.
protect livelihoods,
and strengthen recovery
from disaster and crises.



Enable **healthy**
and **safe** living.



Promote social inclusion
and a culture of
non-violence and peace.

Disaster Response Financial Report

MDR55001 - Pacific - Tropical Cyclone Pam

Timeframe: 23 Mar 15 to 30 Sep 17

Appeal Launch Date: 23 Mar 15

Interim Report

Selected Parameters

Reporting Timeframe	2015/3-2017/2	Programme	MDR55001
Budget Timeframe	2015/3-2017/9	Budget	APPROVED
Split by funding source	Y	Project	*
Subsector:	*		

All figures are in Swiss Francs (CHF)

I. Funding

	Raise humanitarian standards	Grow RC/RC services for vulnerable people	Strengthen RC/RC contribution to development	Heighten influence and support for RC/RC work	Joint working and accountability	TOTAL	Deferred Income
A. Budget		8,024,577				8,024,577	
B. Opening Balance							
Income							
Cash contributions							
American Red Cross		305,435				305,435	
Andorran Red Cross		4,236				4,236	
Australian Red Cross		2,544,096				2,544,096	
Australian Red Cross (from Australian Government*)		292,954				292,954	
Belgian Red Cross (Francophone)		15,136				15,136	
British Red Cross (from British Government*)		700,668				700,668	
British Red Cross (from Great Britain - Private Donors*)		62,018				62,018	
China Red Cross, Hong Kong branch		24,504				24,504	
Danish Red Cross		2,335				2,335	
Danish Red Cross (from Danish Government*)		94,969				94,969	
Danish Red Cross (from Faroe Islands Government*)		28,106				28,106	
Government of Malta		41,502				41,502	
Italian Government Bilateral Emergency Fund		375,767				375,767	48,591
Japanese Government		294,115				294,115	
Japanese Red Cross Society		584,971				584,971	
Luxembourg Government		51,288				51,288	
Marshall Islands Red Cross Society		1,000				1,000	
Monaco Government		10,392				10,392	
New Zealand Red Cross		682,430				682,430	
Norwegian Red Cross		60,510				60,510	
On Line donations (from Argentina - Private Donors*)		2				2	
On Line donations (from Australia - Private Donors*)		397				397	
On Line donations (from Austria - Private Donors*)		5				5	
On Line donations (from Azerbaijan Private Donors*)		1				1	
On Line donations (from Bahrain - Private Donors*)		337				337	
On Line donations (from Barbados - Private Donors*)		3				3	
On Line donations (from Belgium - Private Donors*)		8				8	
On Line donations (from Brazil - Private Donors*)		64				64	
On Line donations (from Bulgaria - Private Donors*)		52				52	
On Line donations (from Cambodia - Private Donors*)		1				1	
On Line donations (from Canada - Private Donors*)		383				383	
On Line donations (from Chile Private Donors*)		1				1	
On Line donations (from China - Private Donors*)		22				22	
On Line donations (from Colombia - Private Donors*)		18				18	
On Line donations (from Costa Rica - Private Donors*)		4				4	
On Line donations (from Cyprus - Private Donors*)		1				1	
On Line donations (from Czech private donors*)		4				4	
On Line donations (from Denmark - Private Donors*)		8				8	
On Line donations (from Dominican Republic - Private Donor*)		4				4	
On Line donations (from Egypt - Private Donors*)		265				265	
On Line donations (from Estonia - Private donors*)		2				2	
On Line donations (from Fiji Private Donors*)		5				5	
On Line donations (from Finland - Private Donors*)		34				34	
On Line donations (from France - Private Donors*)		114				114	
On Line donations (from Georgia Private Donors*)		2				2	
On Line donations (from Germany - Private Donors*)		35				35	
On Line donations (from Great Britain - Private Donors*)		600				600	

Disaster Response Financial Report

MDR55001 - Pacific - Tropical Cyclone Pam

Timeframe: 23 Mar 15 to 30 Sep 17

Appeal Launch Date: 23 Mar 15

Interim Report

On Line donations (from Greece - Private Donors*)	125	125
On Line donations (from Greenland - Private donors*)	1	1
On Line donations (from Guatemala Private donors*)	1	1
On Line donations (from Hong Kong - Private Donors*)	69	69
On Line donations (from Hungarian - Private Donors*)	14	14
On Line donations (from India - Private Donors*)	203	203
On Line donations (from Indonesia - Private Donors*)	17	17
On Line donations (from Ireland - Private Donors*)	41	41
On Line donations (from Israel - Private Donors*)	3	3
On Line donations (from Italy - Private Donors*)	40	40
On Line donations (from Japan - Private Donors*)	314	314
On Line donations (from Jordan - Private Donors*)	12	12
On Line donations (from Kazakhstan - Private Donors*)	13	13
On Line donations (from Kosovo - Private donors*)	3	3
On Line donations (from Kuwait - Private Donors*)	112	112
On Line donations (from Lebanese - Private Donors*)	3	3
On Line donations (from Lithuania - Private Donors*)	4	4
On Line donations (from Luxembourg - Private Donors*)	8	8
On Line donations (from Malaysia - Private Donors*)	96	96
On Line donations (from Maldives Private Donors*)	5	5
On Line donations (from Mexico - Private Donors*)	35	35
On Line donations (from Morocco Private Donors*)	1	1
On Line donations (from Myanmar - Private Donors*)	4	4
On Line donations (from Namibia - Private Donors*)	2	2
On Line donations (from Nepal Private Donors*)	6	6
On Line donations (from Netherlands - Private Donors*)	33	33
On Line donations (from New Zealand - Private Donors*)	71	71
On Line donations (from Nigeria private donors*)	4	4
On Line donations (from Norway - Private Donors*)	23	23
On Line donations (from Oman - Private Donors*)	102	102
On Line donations (from Pakistan Private Donors*)	10	10
On Line donations (from Panama Private donors*)	6	6
On Line donations (from Peru - Private Donors*)	2	2
On Line donations (from Philippines - Private Donors*)	21	21
On Line donations (from Poland - Private Donors*)	27	27
On Line donations (from Portuguese - Private Donors*)	16	16
On Line donations (from Puerto Rico - Private donors*)	10	10
On Line donations (from Qatar Private Donors*)	483	483
On Line donations (from Republic of Korea - Private Donors*)	11	11
On Line donations (from Romania Private Donors*)	4	4
On Line donations (from Russia - Private Donors*)	62	62
On Line donations (from Saudi Arabia - Private Donors*)	130	130
On Line donations (from Singapore - Private Donors*)	385	385
On Line donations (from Slovenia - Private Donors*)	4	4
On Line donations (from South Africa - Private Donors*)	19	19
On Line donations (from Spain - Private Donors*)	44	44
On Line donations (from Sri Lanka - Private Donors*)	4	4
On Line donations (from Swedish - Private Donors*)	251	251
On Line donations (from Switzerland - Private Donors*)	98	98
On Line donations (from Taiwan - Private Donors*)	120	120

All figures are in Swiss Francs (CHF)

Selected Parameters

Reporting Timeframe	2015/3-2017/2	Programme	MDR55001
Budget Timeframe	2015/3-2017/9	Budget	APPROVED
Split by funding source	Y	Project	*
Subsector:	*		

Disaster Response Financial Report

MDR55001 - Pacific - Tropical Cyclone Pam

Timeframe: 23 Mar 15 to 30 Sep 17

Appeal Launch Date: 23 Mar 15

Selected Parameters

Reporting Timeframe	2015/3-2017/2	Programme	MDR55001
Budget Timeframe	2015/3-2017/9	Budget	APPROVED
Split by funding source	Y	Project	*
Subsector:	*		

All figures are in Swiss Francs (CHF)

On Line donations (from Tajikistan - Private Donors*)	4	4	
On Line donations (from Thailand - Private Donors*)	56	56	
On Line donations (from Tunis Private Donors*)	1	1	
On Line donations (from Turkey - Private Donors*)	17	17	
On Line donations (from Ukraine private donors*)	6	6	
On Line donations (from Unidentified donor*)	4	4	
On Line donations (from United Arab Emirates - Private Donors*)	707	707	
On Line donations (from United States - Private Donors*)	8,141	8,141	
On Line donations (from Uruguay - Private Donors*)	2	2	
On Line donations (from Venezuela - Private Donors*)	3	3	
On Line donations (from Vietnam - Private Donors*)	13	13	
Other	-302	-302	
Red Cross of Monaco	31,340	31,340	
Republic of Korea Government	193,872	193,872	
Spanish Government	52,240	52,240	
Swiss Red Cross	130,000	130,000	
Switzerland - Private Donors	50	50	
The Canadian Red Cross Society	122,961	122,961	
The Canadian Red Cross Society (from Canadian Government*)	153,963	153,963	
The Netherlands Red Cross	1,253	1,253	
The Netherlands Red Cross (from Netherlands Government*)	515,680	515,680	
United States Government - USAID	96,144	96,144	
United States - Private Donors	250	250	
VERF/WHO Voluntary Emergency Relief	5,000	5,000	
C1. Cash contributions	7,493,281	7,493,284	48,591
Inkind Goods & Transport			
American Red Cross	21,408	21,408	
Australian Red Cross	298,502	298,502	
Japanese Red Cross Society	74,448	74,448	
The Netherlands Red Cross	34,951	34,951	
C2. Inkind Goods & Transport	429,309	429,309	
Inkind Personnel			
Australian Red Cross	46,826	46,826	
New Zealand Red Cross	71,607	71,607	
C3. Inkind Personnel	118,433	118,433	
Other Income			
Write off & provisions	-5,403	-5,403	
C4. Other Income	-5,403	-5,403	
C. Total Income = SUM(C1..C4)	8,035,624	8,035,624	48,591
D. Total Funding = B + C	8,035,624	8,035,624	48,591

* Funding source data based on information provided by the donor

II. Movement of Funds

	Raise humanitarian standards	Grow RC/RC services for vulnerable people	Strengthen RC/RC contribution to development	Heighten influence and support for RC/RC work	Joint working and accountability	TOTAL	Deferred Income
B. Opening Balance							
C. Income		8,035,624				8,035,624	48,591
E. Expenditure		-7,535,851				-7,535,851	
F. Closing Balance = (B + C + E)		499,772				499,772	48,591

Disaster Response Financial Report

MDR55001 - Pacific - Tropical Cyclone Pam

Timeframe: 23 Mar 15 to 30 Sep 17

Appeal Launch Date: 23 Mar 15

Interim Report

Selected Parameters

Reporting Timeframe	2015/3-2017/2	Programme	MDR55001
Budget Timeframe	2015/3-2017/9	Budget	APPROVED
Split by funding source	Y	Project	*
Subsector:	*		

All figures are in Swiss Francs (CHF)

III. Expenditure

Account Groups	Budget	Expenditure					TOTAL	Variance
		Raise humanitarian standards	Grow RC/RC services for vulnerable people	Strengthen RC/RC contribution to development	Heighten influence and support for RC/RC work	Joint working and accountability		
A						B	A - B	
BUDGET (C)			8,024,577			8,024,577		
Relief items, Construction, Supplies								
Shelter - Relief	392,152		374,797			374,797	17,355	
Construction - Facilities	264,280		276,802			276,802	-12,522	
Construction Materials	258,065		245,659			245,659	12,406	
Clothing & Textiles	101,265		97,738			97,738	3,527	
Food			169			169	-169	
Water, Sanitation & Hygiene	288,149		310,788			310,788	-22,639	
Medical & First Aid	16,400		25,026			25,026	-8,626	
Utensils & Tools	186,706		173,206			173,206	13,500	
Other Supplies & Services	35,764		20,446			20,446	15,318	
Total Relief items, Construction, Sup	1,542,780		1,524,630			1,524,630	18,150	
Land, vehicles & equipment								
Vehicles	61,500		21,073			21,073	40,427	
Computers & Telecom	29,454		40,487			40,487	-11,033	
Office & Household Equipment	15,400		8,652			8,652	6,748	
Total Land, vehicles & equipment	106,354		70,213			70,213	36,142	
Logistics, Transport & Storage								
Storage	59,600		58,649			58,649	951	
Distribution & Monitoring	613,724		622,620			622,620	-8,896	
Transport & Vehicles Costs	186,109		179,298			179,298	6,811	
Logistics Services	68,549		71,702			71,702	-3,153	
Total Logistics, Transport & Storage	927,982		932,268			932,268	-4,287	
Personnel								
International Staff	1,458,610		1,388,299			1,388,299	70,311	
National Staff	140,823		112,342			112,342	28,482	
National Society Staff	444,566		419,768			419,768	24,797	
Volunteers	218,727		147,869			147,869	70,858	
Total Personnel	2,262,726		2,068,278			2,068,278	194,448	
Consultants & Professional Fees								
Consultants	201,894		150,548			150,548	51,346	
Professional Fees	65,500		54,519			54,519	10,981	
Total Consultants & Professional Fees	267,394		205,067			205,067	62,327	
Workshops & Training								
Workshops & Training	261,369		199,521			199,521	61,848	
Total Workshops & Training	261,369		199,521			199,521	61,848	
General Expenditure								
Travel	362,258		392,537			392,537	-30,279	
Information & Public Relations	31,055		33,623			33,623	-2,568	
Office Costs	259,152		241,171			241,171	17,982	
Communications	75,418		67,865			67,865	7,553	
Financial Charges	75,728		61,641			61,641	14,087	
Other General Expenses	14,131		6,081			6,081	8,050	
Shared Office and Services Costs	132,990		142,597			142,597	-9,607	
Total General Expenditure	950,733		945,513			945,513	5,219	
Depreciation								
Depreciation and impairment			5,415			5,415	-5,415	
Total Depreciation			5,415			5,415	-5,415	

Disaster Response Financial Report

MDR55001 - Pacific - Tropical Cyclone Pam

Timeframe: 23 Mar 15 to 30 Sep 17

Appeal Launch Date: 23 Mar 15

Interim Report

Selected Parameters

Reporting Timeframe	2015/3-2017/2	Programme	MDR55001
Budget Timeframe	2015/3-2017/9	Budget	APPROVED
Split by funding source	Y	Project	*
Subsector:	*		

All figures are in Swiss Francs (CHF)

III. Expenditure

Account Groups	Budget	Expenditure					TOTAL	Variance
		Raise humanitarian standards	Grow RC/RC services for vulnerable people	Strengthen RC/RC contribution to development	Heighten influence and support for RC/RC work	Joint working and accountability		
	A					B	A - B	
BUDGET (C)			8,024,577			8,024,577		
Contributions & Transfers								
Cash Transfers National Societies	1,215,477		972,382			972,382	243,095	
Cash Transfers to 3rd Parties			45,000			45,000	-45,000	
Total Contributions & Transfers	1,215,477		1,017,382			1,017,382	198,095	
Operational Provisions								
Operational Provisions			58,873			58,873	-58,873	
Total Operational Provisions			58,873			58,873	-58,873	
Indirect Costs								
Programme & Services Support Recovr	489,763		448,049			448,049	41,714	
Total Indirect Costs	489,763		448,049			448,049	41,714	
Pledge Specific Costs								
Pledge Earmarking Fee			48,943			48,943	-48,943	
Pledge Reporting Fees			11,700			11,700	-11,700	
Total Pledge Specific Costs			60,643			60,643	-60,643	
TOTAL EXPENDITURE (D)	8,024,577		7,535,851			7,535,851	488,726	
VARIANCE (C - D)			488,726			488,726		