


www.ifrc.org
Saving lives,
changing minds.

Emergency Appeal Revision

Uganda: Population Movement

 International Federation
of Red Cross and Red Crescent Societies

(Revised) Appeal n° 1
MDRUG038

Glide n° [OT-2016-000087-UGA](#)

136,666 people to be assisted

2,670,638 Swiss francs current Appeal budget

726,421 Swiss francs funding gap

Appeal launched 26 August 2016

Revision n° 1 issued 14 April 2017

Appeal ends 24 August 2017

This revised Emergency Appeal seeks **2,670,638** Swiss francs (increased from 690,325 Swiss francs) to enable the **International Federation of Red Cross and Red Crescent Societies (IFRC)** to support the **Uganda Red Cross Society (URCS)** in assisting **136,666 people** (an increase from 30,000 people) for 12 months. The expanded operation will focus on the following sectors: **water, sanitation and hygiene (WASH), health and National Society capacity building**. It also reflects a substantial increase in the target population and number of activities to be implemented. The revised budget includes bilateral support for Emergency Response Unit (ERU) and international staff deployments valued at 1,313,032 Swiss francs. The current funding gap is 726,421 Swiss francs. The planned response reflects the current situation and information available now of the evolving operation, and will be adjusted based on further developments and more detailed assessments. Details are available in the [Emergency Appeal Revision \(EPoA\)](#).

The disaster and the Red Cross Red Crescent response to date

July 2016: In the month following an escalation of violence in South Sudan, 80,354 people cross into Uganda at a rate of approximately 2,592 people per day.

27 July 2016: An inter-agency meeting is held where the Office of the Prime Minister (OPM) and UNHCR called upon agencies to urgently mobilize resources and capacities to respond to the refugee humanitarian situation in West Nile.

2 Aug 2016: Bidibidi settlement opens in Yumbe District to alleviate overcrowding in other settlements. The IFRC supports URCS to focus its response efforts in Bidibidi. Services and facilities in Bidibidi settlement are extremely under-resourced and are not sufficient to meet the basic needs of the current and projected refugees.

16 Aug 2016: 8,982 refugees are registered at Bidibidi. UNHCR projects the number would increase to 40,000 by December 2016.

24 August 2016: IFRC issues an Emergency Appeal for 658,782 Swiss francs to assist 40,000 refugees in Bidibidi Settlement.

01 November 2016: IFRC issues [operations update 3](#) with a revised Appeal budget of 690,325 Swiss francs to assist 30,000 refugees (reduced from 40,000 refugees).

24 February 2017: IFRC issues [Operation update no.4](#) with an extended time frame until 24 August 2017, taking in to account the significant increase in daily refugee arrivals.

13 April 2017: IFRC issues revised Emergency Appeal for 2,670,638 Swiss francs targeting 136,666 refugees in Bidibidi, Imvepi and Rhino settlement and scale up the current operation.

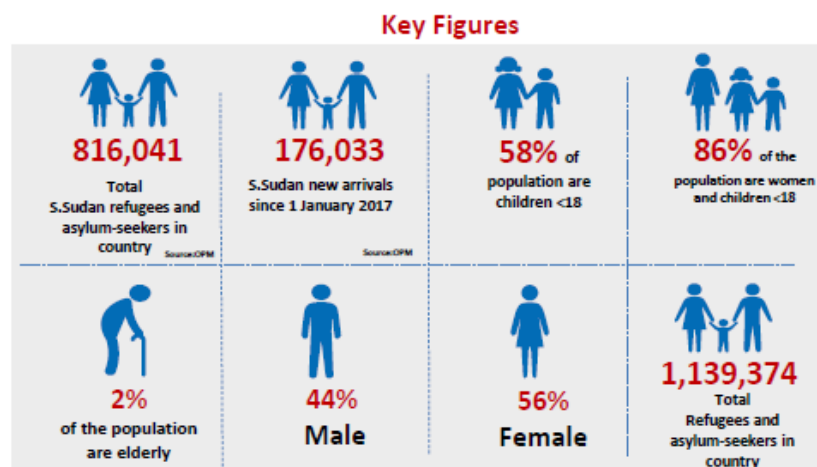


South Sudanese refugees in Palorinya – photo credits T. Arlemo

The operational strategy

Background

The conflict in South Sudan, which began in December 2013, has affected every single household in the country. More than 1.5 million people have fled South Sudan in search of safety in neighbouring countries, including Sudan, the Democratic Republic of the Congo, and Uganda. The renewed conflict in July 2016, led to a new influx of refugees. Fighting and insecurity across the Equatorias continue to uproot tens of thousands of civilians. In Central Equatoria, there are continued reports of violations against civilians. Inter-communal fighting has also caused displacement and destruction. In addition, gender-based violence remains a concern, with partners reporting cases of rape among women fleeing fighting in Yuai. According to UNHCR, South Sudan is now Africa's largest refugee crisis and the world's third after Syria and Afghanistan.



Refugee population key figures (UNHCR, 27 March 2017)

When the appeal was launched in August 2016, 8,982 refugees were registered at Bidibidi Settlement. By March 2017, this has increased to a total of 272,206 refugees. The OPM figures show that a total 816,041 South Sudanese have sought refuge in Uganda as of 27 March 2017. The influx shows little sign of abating. Many of the people are living in sprawling refugee settlements. Currently people are being accommodated in four settlements including Bidibidi (272,206 refugees), Palorinya (141,298 refugees), Rhino (86,770 refugees) and Imvepi (10,691 refugees). The remaining 305,076 refugees are located in various parts of the country.

Given this, the Emergency Appeal is being revised to enable the IFRC to support URCS in its response to reach 136,666 people with an increased budget of 2,670,638 Swiss francs.

Needs assessment

WASH

A rapid WASH assessment conducted by the URCS and the IFRC in February 2017 showed a service level of one latrine to 82 people which does not meet the SPHERE standard. While the provision of safe drinking water is secured by trucking services and drilled hand pumps, access to sanitation facilities remains inadequate and open defecation is predominant across the settlement. Some of the challenges related to the poor latrine coverage in the areas where refugees have been settled relate to poor soil conditions such as loose soils and the prevalence of rocky soils which make pit excavation difficult for refugees with poor access to tools and skills.

A rapid assessment performed by the Emergency Response Unit (ERU) Mass Sanitation Module 20 (MSM 20) in March 2017 in the Imvepi settlement details a huge gap in latrine coverage with 357 people per drop hole. There are 35 latrines at the reception centre and seven of these are full. Privacy and safety of latrines is also a concern as the latrine doors are not lockable and have no lighting. Although the latrines are cleaned regularly by URCS, they are filling up quickly. There are also no hand washing facilities outside the latrines.

Health

A detailed health assessment was performed in December 2016, focusing on the health needs in Bidibidi settlement and the findings identified needs in the area and suggested strategies to move forward with the emergency appeal health activities.

Available demographic data indicated that a significant percentage of refugees are female, children and People with Specific Needs (PSNs). This group includes persons with serious health conditions, single women, female-headed households with large young families, older persons and Persons with Disabilities (PWDs). According to UNHCR reports, in Bidibidi settlement, there are 547 PSNs (480 female / 67 male) registered. The two top categories of PSNs registered are elderly persons and women at risk (pregnant, lactating and single parents).

During a focus group discussion, women expressed their concern about management of menstrual hygiene and the lack of access to disposable pads and washing of rags during menstruation due to shortage of water, lack of soap and a secure and private location for cleaning.

The low access to health care service infrastructure in South Sudan shows low immunization coverage amongst the refugee population, it is therefore very likely that the number of unimmunized children under five years crossing the border is high. The risk of an outbreak of preventable diseases, such as measles, is very high given the crowded living condition and the expected low herd immunity among refugees. Potential measles outbreaks among children under five years of age increases the risk of exposure to other health problems such as vitamin A deficiency, diarrhoea, general malnutrition and other childhood illnesses.

Given the high prevalence of malaria across the West Nile districts, there is a high risk of spread of malaria in Bidibidi, especially during the rainy season which began in March 2017. UNHCR is currently distributing one mosquito net per household at the reception centre. This is not sufficient for a family of five, thus increasing the risk of spread of malaria and other vector borne diseases within the settlement. Additionally, there is poor access to health facilities with only one mobile clinic run by the International Rescue Committee (IRC) in Bidibidi settlement (there is a plan underway to set up a health centre).

Food Security and Nutrition

According to FEWSNET reports¹, the area of operation is highlighted as a crisis sensitive zone in relation to food security and nutrition due to the reduced rainfall in most parts of the Eastern Africa. Integrated Phase Classification (IPC) levels are being monitored. The current food security needs are being addressed by other agencies and the food distribution is being carried out by World Food Programme and World Vision International with the support of URCS.

Summary of response to date

The URCS has been providing humanitarian support to refugees in the West Nile and South Western region. The services include the provision of emergency WASH, Non-Food Items (NFIs), food insecurity response, psycho social support, health, restoring family links, peace and conflict management. Arua Branch, situated in the West Nile region covers four districts including Yumbe, Koboko, Maracha and Arua. There are four staff at the branch and 30 Red Cross Action Team (RCAT) volunteers. So far, the URCS has been playing a key role in ensuring the immediate reduction in the risk of waterborne and water related disease. The focus of the activities so far has revolved around:

- 1,300,000 litres of water meeting SPHERE standards have been produced on daily basis to serve a population of 86,666 people.
- Construction of 155 communal latrines and bathing facilities in Bidibidi settlement.
- Support rehabilitation of identified boreholes to increase access to water in the settlements.
- Improve and maintain water quality sources from the artesian well by replenishing WatSan Kit 5 consumables and tools, construction of tank bases and fencing off the operational area.
- As part of MSM 20, construction of 62 communal latrines have been completed in Imvepi reception centre. There are plans to build 138 more latrines.
- 80 volunteers have received a two-day hygiene promotion training and a further 18 volunteers received a refresher training. The volunteers have been carrying out hygiene promotion trainings to refugee population in Ivemphi camp.
- 60 pupils at KamKam schools (Rigbo primary school and Aliba primary school) trained in hygiene promotion covering topics such as key moments of hand washing, contamination routes of diseases and barriers to stop against the diseases.

Beneficiary selection

The operation will target the most vulnerable and where possible will focus on reaching women, children and persons with specific needs (PSNs). The interventions will be aligned with the IFRC-minimum standard commitments to gender and diversity in emergency programming, for example the selection of beneficiaries was based on their level of vulnerability, including: the chronically ill, elderly, female-headed households, lactating mothers and under-five children (malnourished), pregnant women, and/or people with disabilities. The URCS has been working closely with the Government of Uganda (GoU), stakeholders and other agencies to ensure that there will be no duplication of interventions of activities

Overall objective

Immediate survival and basic needs of South Sudanese refugees are met through the provision of essential emergency water, sanitation and hygiene promotion and health to 136,666 people living in Bidibidi, Imvepi, and Rhino settlement

¹ <http://www.fews.net/east-africa/uganda>

including strengthening the emergency preparedness and response capacity of the URCS for a period of twelve months since the start of the Appeal.


Coordination and partnerships

The URCS has remained the country's key strategic humanitarian agency fostering good working relationships and collaboration with the GOU through the OPM, IFRC, ICRC and Partner National Societies (PNSs) present in country. The IFRC's East Africa country cluster support team (EA-CCST) and the Regional Office for Africa are supporting the URCS under this Emergency Appeal with deployment of various staff to support the operation.

The Austrian, British, Canadian German, Icelandic, Japanese, Norwegian, Netherlands, Monaco and Swedish Red Cross Societies support the operation through cash and in-kind contributions.

Coordination and information sharing has been initiated under OPM and UNHCR leadership at the Kampala level, in Arua for the West Nile region and at the Bidibidi, Polorinya, Imvepi and Rhino refugee settlements. This brings together all UN agencies, the GOU, the Red Cross, International NGOs, local NGOs (implementing partners) and other stakeholders involved.

Proposed sectors of intervention

	Water, sanitation and hygiene
Outcome 1: Immediate reduction in risk of waterborne and water related diseases in the targeted communities	
Output 1.1: Daily access to safe water which meets Sphere and WHO standards in terms of quantity and quality is provided to target population	
Activities planned: <ul style="list-style-type: none"> • Procure jerry cans, chlorine, aluminium sulphate, water tanks, pumps and equipment to increase production and storage of clean and safe water • Replenish of WatSan Kit 5 Units (equipment and water treatment chemicals, water testing kit consumables, pipes, connectors tools) • Transport for demobilization and mobilization of WatSan Kit 5 • Ensure the water production sites are safe and functioning through volunteer support and the use of solar lights • Construction of animal water trough at the artisan well • Procure and supply engine oil for six water pumps • Local procurement of materials for the bladder tank • Perform water well yield tests and assessment 	
Output 1.2: Adequate sanitation which meets Sphere standards in terms of quantity and quality is provided to target population	
Activities planned: <ul style="list-style-type: none"> • Purchase and distribution of plastic slabs for Bidibidi and Imvepi • Cover construction costs for communal latrines in Bidibidi and Imvepi • Procure and install hand washing facilities at latrines • Procure and install liquid soap for hand washing and cleaning facilities • Construct communal bath shelters • Procure and install distribute digging kit equipment • Support household latrine construction with sanitation tool kits • Contract service for digging household latrines 	
Output 1.3: Hygiene promotion activities which meet Sphere standards in terms of the identification and use of hygiene items provided to target population	
Activities Planned <ul style="list-style-type: none"> • Identify and train of volunteers in Participatory Hygiene and Sanitation Transformation (PHAST)² • Produce and procure PHASTer³ toolkits • Train of volunteers in PHASTer • Volunteer Facilitation for hygiene promotion through PHASTer • Procure and distribute protective gear for volunteers 	

² Traditional PHAST as carried out in recovery and development phases.

³ PHAST er – Shortened form of PHAST to target risk behavior in emergencies.

- Procure and distribute Menstrual Hygiene Management (MHM) Kits
- Organize facilitation for MHM focus group discussions
- Train women volunteers as focal persons for MHM activities
- Develop Information, Education and communication materials (posters and stickers)
- Procure and distribute laundry soap Promote hand-washing at household level



Health

Outcome 2: The immediate risks to the health of affected populations are reduced

Output 2.1: Target population is provided with rapid medical management of injuries and diseases

Activities planned:

- First Aid Training for volunteers in Bidibidi and Ivempi
- Security measures in place to ensure the safety of the volunteers working at the water production sites
- Organize volunteer support to provide first aid at reception centres

Output 2.2: Community-based disease prevention and health promotion is provided to the target population

Activities planned:

- Train volunteers in Community Based Health and First Aid (CBHFA), reproductive health, beneficiary communications, epidemic control activities, and disease surveillance in the affected communities
- Organize facilitation of volunteers carrying out CBHFA
- Establish youth activities such as drama and clubs to establish awareness and knowledge on the importance of immunization against diseases
- Print and distribute disease surveillance forms to volunteers among community

Output 2.3: Epidemic prevention and control measures carried out.

Activities Planned

- Procure and distribute Long lasting insecticidal nets (LLINs), including awareness raising on the use of the LLINs
- Participate in inter-agency stakeholder epidemic preparedness and coordination meetings



National Society capacity building

Outcome 3: Capacity of the Ugandan Red Cross Society to respond to the emergency situation and needs of the affected population is strengthened

Output 3.1: Adequate protection is given to staff and volunteers involved in the response operation

Activities planned:

- Procure and distribute visibility materials (t-shirts, caps, stickers)
- Procure and put in place URCS flags and banners bearing logos
- Procure and distribute URCS Reflector jackets for staff and Team Leader Volunteers
- Cover the motorcycle running cost (fuel and maintenance)
- Provision of driver's fleet management training
- Provide Psycho-Social Support (PSS) training of trainers
- Provide technical support on Security management
- Procure and roll-out of PSS activities
- Print and distribute certificates for volunteers

In addition to the sectors above, the operation will be underpinned by a commitment to quality programming that involves:

- Continuous and detailed assessments and analysis to inform the design and ongoing implementation of the programme
- Ongoing process of adjustment based on these assessments

- The establishment of mechanisms to facilitate two-way communication with, and ensure transparency and accountability to, disaster-affected people
- Management and delivery of the programme will be informed by appropriate monitoring and evaluation.

The detailed plan of action under quality programming is as follows:

Quality programming (areas common to all sectors)
Outcome 4: Continuous and detailed assessment and analysis is used to inform the design and implementation of the operation
Output 4.1: Initial needs assessment are updated following consultation with beneficiaries
Activities planned: <ul style="list-style-type: none"> • The IFRC and URCS technical programme staff and HQ staff conduct monitoring visits • Feedback dialogue with the beneficiaries • Procurement of phones and set up of mobile data collection tools • Training on the use of mobile phones for data collection • Data collection using mobile phones and monthly reporting • Production of information education and communication materials for the operation • Training for volunteers to carry out the midterm and final Beneficiary satisfaction surveys
Output 4.2 The emergency plan of action is updated and revised as necessary to reflect needs
Activities planned: <ul style="list-style-type: none"> • Lessons Learnt Workshop

Programme support services

Based on the demand for the technical and coordination support required to deliver in this operation, the following programme support functions will be put in place to ensure an effective and efficient technical coordination: **human resources, logistics and supply chain; information technology support (IT); communications; community engagement and accountability; security; planning, monitoring, evaluation, and reporting (PMER); partnerships and resource development; and finance and administration.** More details are in the Emergency Plan of Action.

Budget

See attached IFRC Secretariat budget (Annex 1) for details.

Garry Conille
Under Secretary General
Programmes and Operations Division

Elhadj As Sy
Secretary General

Contact

For further information, specifically related to this operation please contact:

In Uganda:

- **Uganda Red Cross:** Robert Kwesiga, Secretary General; email: rkwesiga@redcrossug.org

In the IFRC

- **IFRC East Africa Country Cluster:** Getachew Taa; Head of Cluster for East Africa; Nairobi; phone: +254-202835000; email: getachew.taa@ifrc.org
- **IFRC Africa Region:** Farid Abdulkadir, Head of Disaster Management Unit, Nairobi; phone: + 254731067489; email: farid.aiywar@ifrc.org
- **IFRC Geneva:** Cristina Estrada, Response / Recovery Lead, DCPRR; phone: +41227304260; email: cristina.estrada@ifrc.org

For IFRC Resource Mobilization and Pledges support:

- **In IFRC Africa Region:** Fidelis Kangethe, Partnerships and Resource Development Coordinator; Nairobi; phone: +254-714026229; email: fidelis.kangethe@ifrc.org

For In-Kind donations and Mobilization table support:

- **IFRC Africa Region Logistics Unit:** Rishi Ramrakha, Head of Regional Logistics Unit; phone: +254733888022; fax: +254-202712777; email: rishi.ramrakha@ifrc.org

For Performance and Accountability support (planning, monitoring, evaluation and reporting enquiries)

Yusuf Ibrahim, Acting PMER Coordinator, Telephone: +254 732 412 200; Email: yusuf.ibrahim@ifrc.org

How we work

All IFRC assistance seeks to adhere to the **Code of Conduct** for the International Red Cross and Red Crescent Movement and Non-Governmental Organizations (NGO's) in Disaster Relief and the **Humanitarian Charter and Minimum Standards in Humanitarian Response (Sphere)** in delivering assistance to the most vulnerable. The IFRC's vision is to inspire, **encourage, facilitate and promote at all times all forms of humanitarian activities** by National Societies, with a view to **preventing and alleviating human suffering**, and thereby contributing to the maintenance and promotion of human dignity and peace in the world.

The IFRC's work is guided by Strategy 2020 which puts forward three strategic aims:



Save lives,
protect livelihoods,
and strengthen recovery
from disaster and crises.

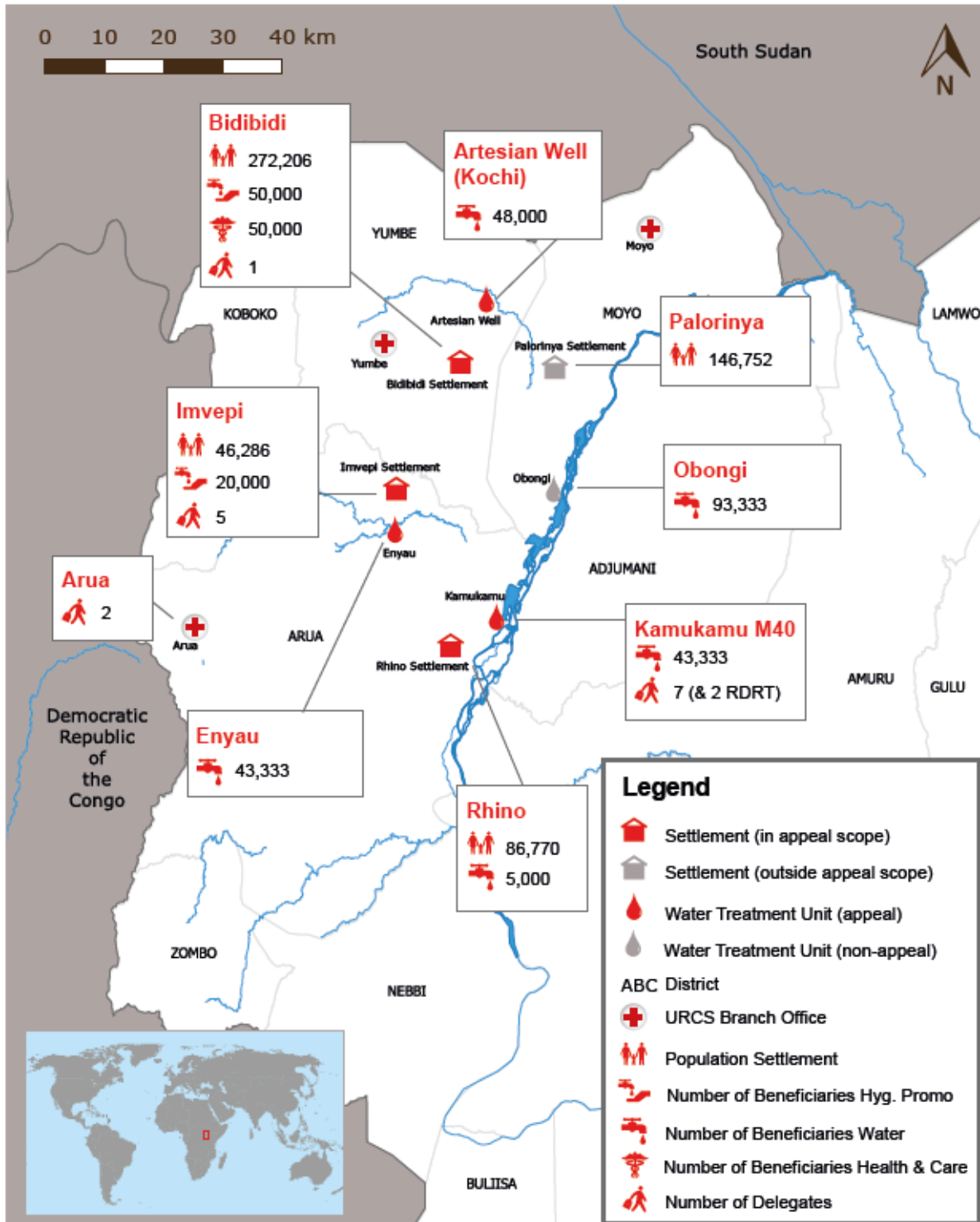


Enable **healthy**
and **safe** living.



Promote **social inclusion**
and a culture of
non-violence and **peace**.

Uganda: Population Movement



The maps used do not imply the expression of any opinion on the part of the International Federation of Red Cross and Red Crescent Societies or National Societies concerning the legal status of a territory or of its authorities. Data sources: IFRC, GADM, SIGCAF, WRI, OCHA, UNHCR. Population Settlement as of March 27th, 2017. Map produced by: IFRC Africa Regional Office, Nairobi.

EMERGENCY APPEAL

MDRUG038

MDRUG038 Uganda : Population Movement

29th March 2017

Budget Group	Multilateral Response	Inter-Agency Shelter Coord.	Bilateral Response	Appeal Budget CHF
Shelter - Relief	-		0	-
Shelter - Transitional	-		0	-
Construction - Housing	-		0	-
Construction - Facilities	-		0	-
Construction - Materials	-		0	-
Clothing & Textiles	43,245.66		0	43,245.66
Food	-		0	-
Seeds & Plants	-		0	-
Water, Sanitation & Hygiene	392,763.31		0	392,763.31
Other Supplies & Services	-		0	-
Medical & First Aid	4,255.00		0	4,255.00
Teaching Materials	10,884.38		0	10,884.38
Utensils & Tools	58,500.00		0	58,500.00
Emergency Response Units	-		1,026,632.00	1,026,632.00
Total RELIEF ITEMS, CONSTRUCTION AND SUPPLIES	509,648.35		1,026,632.00	1,536,280.35
Vehicles	10,176.00		0	10,176.00
Computer & Telecom Equipment	16,373.00		0	16,373.00
Office/Household Furniture & Equipment	-		0	-
Medical Equipment	-		0	-
Other Machinery & Equipment	-		0	-
Total LAND, VEHICLES AND EQUIPMENT	26,549.00		-	26,549.00
Storage, Warehousing	10,285.71		0	10,285.71
Distribution & Monitoring	1,857.14		0	1,857.14
Transport & Vehicle Costs	110,509.14		0	110,509.14
Logistics Services	-		0	-
Total LOGISTICS, TRANSPORT AND STORAGE	122,652.00		-	122,652.00
International Staff	72,000.00		281,600.00	353,600.00
National Staff	15,400.00		0	15,400.00
National Society Staff	204,815.02		0	204,815.02
Volunteers	168,009.41		0	168,009.41
Total PERSONNEL	460,224.42		281,600.00	741,824.42
Consultants	15,000.00		0	15,000.00
Professional Fees	25,020.00		0	25,020.00
Total CONSULTANTS & PROFESSIONAL FEES	40,020.00		-	40,020.00
Workshops & Training	23,751.34		0	23,751.34
Total WORKSHOP & TRAINING	23,751.34		-	23,751.34
Travel	42,500.00		4,800.00	47,300.00
Information & Public Relations	13,506.86		0	13,506.86
Office Costs	4,400.00		0	4,400.00
Communications	8,099.88		0	8,099.88
Financial Charges	514.29		0	514.29
Other General Expenses	1,745.94		0	1,745.94
Shared Office and Services Costs	21,136.00		0	21,136.00
Total GENERAL EXPENDITURES	91,902.97		4,800.00	96,702.97
Partner National Societies	-		0	-
Other Partners (NGOs, UN, other)	-		0	-
Total TRANSFER TO PARTNERS	-		-	-
Programme and Services Support Recovery	82,858.63		0	82,858.63
Total INDIRECT COSTS	82,858.63		-	82,858.63
Pledge Earmarking & Reporting Fees	-		-	-
Total PLEDGE SPECIFIC COSTS	-		-	-
TOTAL BUDGET	1,357,606.71		1,313,032.00	2,670,638.71
Available Resources				
Multilateral Contributions	631,185.00			631,185.00
Bilateral Contributions			1,313,032.00	1,313,032.00
TOTAL AVAILABLE RESOURCES	631,185.00		1,313,032.00	1,944,217.00
NET EMERGENCY APPEAL NEEDS	726,421.71		-	726,421.71