

www.ifrc.org  
Saving lives,  
changing minds.

## Emergency Plan of Action (EPoA) Nepal: Monsoon floods and landslides

 International Federation  
of Red Cross and Red Crescent Societies

<b>DREF Operation n° MDRNP009</b>	<b>Glide n° FL-2017-000107-NPL</b>
<b>Date of issue:</b> 13 August 2017	<b>Expected timeframe:</b> 3 months, <b>Expected end date:</b> November 2017
<b>Operation manager (responsible for this EPoA):</b> Sanjeev Hada, head of NSDU, IFRC Nepal office	<b>Point of contact (name and title):</b> <b>IFRC:</b> Yadav Dahal, acting head of delegation <b>NRCS:</b> Dharama Raj Pandey, head of Disaster Management, Nepal Red Cross Society
<b>DREF allocated:</b> CHF 497,099 <i>The NRCS and IFRC are still analyzing the need for Emergency Appeal. Decision will be confirmed within a week.</i>	<b>Number of people to be assisted with DREF:</b> 7,000 families (35,000 people) with NFRIs, WASH and food security interventions.
<b>Total number of people affected:</b> 99,095	
<b>Host National Society(ies) presence (n° of volunteers, staff, branches):</b> Nepal Red Cross Society (NRCS) has presence in all 75 districts of the country in the form of district chapters and more than 1,300 sub-chapters. More than 500 staff and volunteers – including District Disaster Response Teams (DDRT), National Disaster Response Team (NDRT) and First Aid – have been mobilized in the most affected districts.	
<b>Red Cross Red Crescent Movement partners actively involved in the operation:</b> NRCS and IFRC. As situation unfolds, further consultation with in country PNSs and ICRC will be carried out to explore financial and technical support for the operation.	
<b>Other partner organizations actively involved in the operation:</b> Nepal Government Ministry of Home Affairs, District Disaster Response Committee (DDRC), Security Forces (Nepal Army, Nepal Police, Armed Police Force) and UN agencies.	

## A. SITUATION ANALYSIS

### Description of the disaster

Several districts of Nepal have experienced an increase of monsoon precipitations in the last weeks. The torrential rain continued between 11 and 14 August 2017 causing massive floods and several landslides in 31 districts throughout the country, of which 19 districts are severely affected.

According to the Nepal Red Cross Initial Rapid Assessment (IRA) reports received from the affected districts as of 13 August 2017, a total of 27,861 families (139,300 people) have been affected, of which 6,247 families (47,350 people) are displaced. Some 2,964 houses are completely destroyed and 8,344 are partially damaged.

The report indicates that 64 people are confirmed dead; 16 people are still missing; and 44 people have been injured. The numbers have been increasing day by day and is likely to continue as some of the affected areas are challenging to access.



People are moving to safer locations using floating rafts of banana logs in Jhapa district, (Photo: NRCS)

The numbers have been increasing day by day and is likely to continue as some of the affected areas are challenging to access.

Life has been adversely affected due to continuous rise in the water levels of major rivers in Terai districts, caused by incessant rainfall in the last couple of days. The floods and landslides have damaged infrastructure such as; roads connecting district headquarters to the affected village development committees (VDCs), bridges, culverts, local markets, transport vehicles, livestock; crops and daily consumables.

## Summary of the current response

### Overview of Host National Society

Following the disaster, the Nepal Red Cross Society (NRCS) district chapters immediately deployed 448 trained volunteers to conduct rapid assessments and provide relief services to the affected people. However, their access to the affected areas has been restricted due to the inundation of entire villages and blocked roads. Also, volunteers have been facing problems in identifying and managing the temporary evacuation centers due to low availability of public places and safe places in comparison to the large number of displaced people. Government security personnel (Nepal army, armed police force and Nepal police) and NRCS volunteers have evacuated affected families from high-risk areas to shelters in the schools and public places. Some families are still living in open places.

Nepal Red Cross Society has been coordinating all relief efforts from its' Emergency Operation Center (EOC)- National Headquarters activated since 12 August 2017. NRCS has regularly been taking part in the emergency meetings of Central Natural Disaster Relief Committee (CNDRC). NRCS headquarters participated in National Emergency Operation Centre (NEOC) on 13 August 2017. In the meetings, the government requested all humanitarian actors to provide immediate ready to eat food, water, sanitation and hygiene (WASH) services and emergency shelter to the affected people.

NRCS district chapters has deployed response teams for assessment at the onset of the flooding. The teams are also assisting in evacuations, undertaking relief management and providing first aid services in the affected areas. In addition, the District Disaster Response Team (DDRT), Community Action for Disaster Response in Emergency (CADRE) and first aid teams have also been deployed. More than 448 staff and volunteer have been mobilized to help with evacuations, rapid assessments, relief distributions and logistics management in the affected districts.

Likewise, the NRCS district chapters and volunteers are providing support to security forces in search and rescue and evacuating them to safe areas. NRCS district chapters are managing the distribution of ready-to-eat food (biscuits, beaten rice, instant noodles) in coordination with local organizations. NRCS has so far distributed non-food relief items (NFRIs), tarpaulins and ready to eat food (RTEF) for around 1,305 families from its prepositioned stocks, with the distribution ongoing in all affected districts.

NRCS regional warehouses in Biratnagar and Birgung have dispatched 500 NFRIs. Additionally, other district chapters have been using their own preparedness stocks such as tarpaulins, blankets, NFRIs, kitchen sets, soaps, water purifying agent, oral rehydration solution (ORS) to assist affected families.

NRCS headquarters is alerting additional National Disaster Response Team (NDRT), CADRE, DDRT, and first aid volunteers on stand-by for deployment as needed. NRCS district chapters have been represented in the District Disaster Relief Committee (DDRC) meeting in concerned districts.

### Overview of Red Cross Red Crescent Movement in country

The International Federation of Red Cross and Red Crescent Societies (IFRC) has been supporting NRCS for preparing situation reports and providing inputs to coordinate the relief operation to ensure fulfillment of immediate humanitarian

Disaster situation	
No. of affected districts	31
No. of dead people	64
No. of missing people	16
No. of injured people	44
No. of affected families	27,861
No. of displaced families	6,247
No. of house destroyed completely	2,964
No. of houses damaged partially	8,344
<b>Name of 31 affected districts:</b> Lalitpur, Palpa, Jhapa, Morang, Sunsari, Saptari, Bardia, Dang, Banke, Siraha, Sarlai, Bara, Sindhuli, Panchthar, Rasuwa, Rupendehi, Baglung, Nawalparasi, Kailali, Kalikot, Doti, Dhading, Ramechhap, Syangja, Parbat, Pyuthan, Kaski, Terathum, Dolakha, Surkhet and Rautahat	



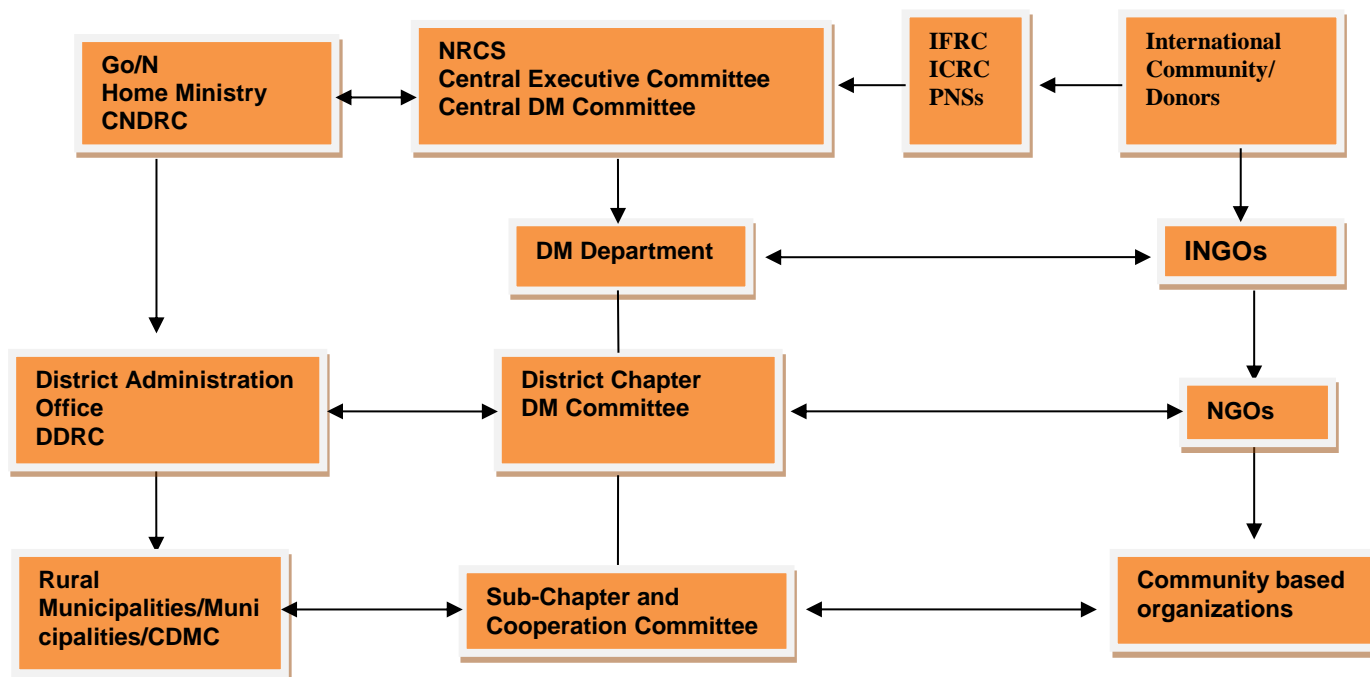
NRCS response: announcement by district staff and volunteers in communities to move safer places in Jhapa district (Above). Distribution of emergency relief item in Lalitpur district (Below), (Photo: NRCS)

needs on the ground. Likewise, the IFRC is participating in different meetings, including NEOC and Humanitarian Country Team. IFRC has also been coordinating with shelter cluster members. The IFRC team in the country is closely monitoring the situation together with the NRCS and coordinating with all in country Partner National Societies (PNS).

### Movement Coordination

The IFRC has been informing all concerned PNSs about the daily situation and current needs to be fulfilled. This DREF response operation will be guided by existing NRCS coordination mechanism (please see below flow chart).

### NRCS Coordination Mechanism



### Overview of non-RCRC actors in country

The Government of Nepal has been organizing emergency meetings of Central Natural Disaster Relief Committee and when needed. The National Emergency Operation Centre and Local Emergency Disaster Management Authority have been activated. All three security forces (Nepalese Army, Armed Police Force and Nepal Police) have been deployed for immediate search and rescue.

The security forces located at district level were mobilized, alerting people to be evacuated and assisting them to move to safer locations. The government has also mobilized private and government owned helicopters to transport people at risk to safer places, injured people to hospitals and relief materials to the operations site. The two helicopters which were used for two days by the Government have now been stood down.

Nepal Government has issued flood forecast bulletin on 13 August and circulated SMSs to people in vulnerable areas. The Government also asked the local authorities to keep the schools closed for the next 24 hours and making announcements to move safer locations. The Prime Minister has directed all the concerned Ministries and security agencies to rescue the affected people from inundated areas of Terai region. The District Disaster Response Committee (DDRC) are collecting NFIs from the Nepal Red Cross however the distribution has been delayed due to unfavourable weather condition.

Clusters such as health, WASH, Shelter and logistics, etc. have been activated since 13 August 2017. IFRC being the co-lead of the Shelter Cluster has conducted several meetings with the partners on the chairmanship of Department of Urban Development and Building Construction (DUDBC), Government of Nepal. The Shelter Cluster is also mapping response of other partners using 4W matrix. Many organizations including the Nepal Red Cross are involved in rescue and relief but they are not being able to reach out every affected areas due to water logging and damaged roads and bridges.

### Needs analysis, beneficiary selection, risk assessment and scenario planning

A rapid assessment is ongoing in coordination with the DDRC in the affected districts. The NRCS NHQs is receiving assessments reports from all affected districts on a daily basis. The preliminary analysis done in 29 districts and NHQs level indicates the following priority needs of the affected population:

- Emergency shelter
- Non-food relief items
- Drinking water and hygiene promotion
- Ready to eat food and/or cash depending upon local context

According to Initial Rapid Assessment report received from district chapters, there is a clear gap for emergency shelter, ready to eat food, emergency shelters, NFRI and WASH. The immediate humanitarian needs are estimated at more than 7,000 families (35,000 people) in the affected districts. Depending upon the local context and functionality of the market, NRCS will explore use of cash to support the distribution of RTEF to the affected people.

However, the number of reported people affected by the disasters is still increasing as some of the affected areas are still being accessed. Hence, relief services will be needed for additional people. The affected and displaced population is struggling to manage daily food, shelter and water required to sustain their lives. Sources of drinking water have been contaminated due to inundation from flood water. At this stage and based on priorities identified, health activities will not be included in this DREF. Health component might be considered if detailed assessments report a gap in this sector or if situation evolves.

NRCS warehouses have been dispatching relief materials regularly to the affected districts, which has depleted the stock of relief items. At the moment, NRCS has stock of around 35,000 NFRI sets throughout the country, where the need might increase as the situation unfolds. The NRCS headquarters has continuously been getting requests from affected districts to send additional NFRI sets to meet the need of displaced population.

Assessments are still being carried out in all affected areas in the 31 districts and further information will be obtained in the coming days.

#### **Selection of beneficiaries**

The prioritized beneficiaries include the elderly, people with disabilities, women and children as the most vulnerable category during disasters although further assessments will identify others who are most vulnerable especially when taking coping mechanisms and socio-economic status into account resulting in targeting of:

- Families most affected by the floods and landslides and displaced from their homes; and
- Affected families headed by women (widows), elderly couples, people with disabilities, young couples with small children.

#### **Risk Assessment**

As the affected areas are scattered and located in remote areas, logistical arrangements remain a key challenge. Assessment teams and responders are reporting several challenges to gain access in the areas affected due to roads being blocked and continuous rain.

## **B. OPERATIONAL STRATEGY AND PLAN**

#### **Overall objective**

The overall objective of the operation is that immediate humanitarian needs of 7,000 families affected by floods and landslides in 31 districts of Nepal are met through the provision of shelter, WASH, NFRI and ready to eat foods. The targeted population is primarily those displaced by, and secondarily those affected by, floods and landslides according to beneficiary selection criteria outlined below.

#### **Proposed strategy**

The NRCS, utilising its staff and volunteers across the affected areas, has been actively engaged in response immediately after onset of disaster and they are in the affected areas rendering relief services. The current operation is mainly focused on assessment and relief materials distribution for affected people, especially the displaced families. In the current scenario, through the proposed DREF operation NRCS will continue to focus on immediate shelter, WASH, food needs in affected districts. The National Society will adopt following strategies:

- Carry out continuous needs assessment and analysis.
- **Provision of emergency shelter and food for 7,000 families** - procurement and distribution of NFRI and tarpaulins. As the target people are the most vulnerables, the staff and volunteers engaged in the distribution of NFRI and tarpaulins will provide IEC material and required orientation on setting up emergency shelter, as needed. NRCS already have shelter IEC materials produced during the Nepal Earthquake 2015 operations. On a later stage, once the detailed assessment report is available – support in terms of timber/bamboo poles or cash to access the local market will be considered.
- **Provision of safe drinking water for 35,000 people** - With the contamination of the water there is a high probability of breakout of diarrheal diseases. The ORS sachets and buckets with lead will be distributed to the families and with information on how to use of the same. There are ORP (oral rehydration points) pre-positioned in Nepal including Kathmandu will these be utilized as part of the response.
- **Mobilization and orientation to staff and volunteers** - So far, a total of 443 volunteers and staff have been deployed for evacuation, assessment and relief distribution. Considering the need of 186 volunteers and 125 NDRT/DDRT members, 1 Regional Disaster Response Team (RDRT) required for carrying out detail assessment and intensive relief distribution, the NRCS plans to cover their mobilization cost from the DREF. A total of 125 DDRT, NDRT, CADRE and first aider are on standby to be deployed as per need.
- **Distribution of RTEF or cash based on local context** – From each family, one representative will receive Ready to Eat Food (RTEF)<sup>2</sup> items. In total, 4,340 people will receive it. The cash transfer programme (CTP) will be used depending upon market availability, however if this is not possible, NRCS will go for in-kind distribution of RTEF in the target districts.
- **Mobilization and replenishment of the stocks** - The support requested from DREF will be utilized for replenishment of the NFRI and WASH items distributed from the pre-positioned stocks.

Composition of NFRI set	
Particular and unit	Amount
Tarpaulin (piece)	1 <sup>1</sup>
Nylon Rope (meters)	10
Blanket (piece)	2
Female Sari (piece)	1
Male Dhoti (piece)	1
Suiting Cloth (meters)	3.5
Print Cloth (meters)	7
Plain Cloth (meters)	2
Tericotton Cloth (meters)	4
Water Bucket with lid (piece)	1
Kitchen Utensils (set)	1

## Operational support services

### Human resources

The operation is expected to involve at least 186 volunteers, 125 DDRT/NDRT members for a number of weeks, and some staff and volunteers will continue to work until the end of the operation. One RDRT members will be deployed for 10 days from the region during the relief distribution. This cost will be covered through DREF budget. In total, NRCS has already assigned 448 volunteers and staff for assessments in the different affected areas, including providing staff to join Government led assessments together with the DDRC.

This DREF covers travel, accommodation and per-diem costs related to the staff and volunteers. Further, pending finalisation of broader insurance schemes, the DREF covers insurance for the volunteers used in the operation through the IFRC global volunteer insurance scheme.

### Logistics and supply chain

A total of 7,000 NFRI sets, WASH items (50,000 soaps, 315,000 tablets, 7,000 buckets, 35,000 ORS) and RTEF for 4,340 people will be procured locally following IFRC standard procurement procedures to ensure audit trail.

NRCS has a central warehouse in Kathmandu and initially the replenishment will be directed there. Decisions around the logistics and timeframes for replenishing pre-positioned stocks used in the zones and branches will be determined once the procurement part of the DREF has been implemented and delivery times are confirmed. Transport and distribution costs within the country will be covered from this DREF budget. Necessary logistics support will be provided following IFR procedures, in coordination with the Regional Logistics Unit (RLU) in Kuala Lumpur.

### Communications

NRCS Humanitarian Value and Communication Department is the focal department for communication and media relations. Information of disaster responses are regularly being updated in the NRCS face book and airing through the NRCS radio program. Field visits will be conducted to capture materials for web story and best practices reflecting the actual needs and operation in the field in the coming days. Local media persons will also be mobilised. Local FM radios will be approached in order to broadcast key messages regularly.

<sup>1</sup> As per NRCS's standard NFRI set – there is a provision for 1 tarpaulins only based on local needs. They will distribute additional tarps if needed and based on assessment findings.

<sup>2</sup> Beaten rice, jaggery, biscuits, noodles or as per availability of food items in the local market. This will be done in line with the NRCS's Response Manual.

Beneficiary communication and close coordination with the affected population will be taken into consideration during relief operation. So the NRCS will try its' best to incorporate feedback during the course of the relief operation. Visibility materials like aprons and key message news bulletins will be promoted. Best practices will be captured and all efforts made to record case studies as we go through the project.

### **Security**

Difficult terrain and geographical remoteness, harsh weather conditions and damaged infrastructure (roads and bridges) are current realities in the field in Nepal. Despite having problems in getting access to the affected VDCs due to inundation and absence of transportation services, the NRCS volunteers are utilizing locally available facilities, including boats in some places, to carry out assessment and render relief services in affected areas.

NRCS enjoy countrywide visibility and respect in Nepal. It has a wide network of community-based volunteers who are trained in first aid, CADRE, DDRT, NDRT and CBDRR. The emblem is respected throughout the country.

Beyond the Red Cross Red Crescent Movement, regular contacts are maintained with local security networks. IFRC country office participate in monthly Humanitarian Country Team (HCT) meetings, convened by UN OCHA, and other fora in which national security is considered and discussed.

Since the NRCS, has been closely working together with the community and all three security forces in all affected areas, there are many opportunities to ensure security at ground.

### **Planning, monitoring, evaluation and reporting**

NRCS will oversee all operational, implementation, monitoring and evaluation, and reporting (PMER) aspects of the present operation in the flood and landslide affected districts through its country-wide network of branches, volunteers and staff. The responsibility for day-to-day monitoring of the operation will be with NRCS district chapters supervised closely by national headquarters to ensure appropriate accountability, transparency and financial management of the operation. NRCS PMER unit will be involved in the PMER activities especially planning and reporting of the operation at headquarters.

IFRC, through its country office in Kathmandu, will provide technical support to NRCS. Joint IFRC and NRCS monitoring visits will be organised to the targeted districts as needed. Reports will be provided in accordance to the DREF reporting guidelines. A final report on this DREF-supported operation will be made available three months after the end of the operation.

A review will be jointly organized between NRCS, IFRC and in-country partners at the end of the operation to ensure lessons learnt from the preparedness work ahead of the season as well as the response operations are captured and used to further develop NRCS, IFRC and partners' capacities.

### **Administration and Finance**

The operation will rely on existing financial management and administration systems in NRCS and IFRC. Provisions have been made for communication costs related to the operation as well as financial charges and general expenses (refer to *budget*).

**C. DETAILED OPERATIONAL PLAN**

**Quality programming / Areas common to all sectors**

Objectives		Indicators															
<b>Outcome 1:</b> Continuous and detailed assessment and analysis is used to inform the design and implementation of the operation and lessons learnt are drawn from the implementation																	
<b>Output 1.1:</b> Initial and continuous needs assessment are updated following consultation with beneficiaries.		<ul style="list-style-type: none"> <li># of assessment conducted (general and/or sectoral)</li> </ul>															
Activities planned	Week	1	2	3	4	5	6	7	8	9	10	11	12	13	14	15	16
Conduct rapid assessments as needed in the evolving flood situation		█															
Conduct more detailed assessment of common sectors in selected communities		█	█														
Mobilize 186 volunteers for the assessment and implementation of activities		█	█	█	█	█	█										
Monitoring by joint teams of NRCS headquarters and IFRC/PNS		█	█	█	█	█	█	█	█	█	█	█					
In-country transport of relief items as per distribution plans		█	█	█													
<b>Output 1.2</b> Lessons learnt are captured from the operation and incorporated into preparedness planning for coming seasons																	
Activities planned	Week	1	2	3	4	5	6	7	8	9	10	11	12	13	14	15	16
After action review													█				





## Contact information

For further information specifically related to this operation, please contact:

### Nepal Red Cross Society:

- Dev Ratna Dhakhwa, secretary general; phone: +977 427 0650; fax: +977 427 1915; email: [dev@nrsc.org](mailto:dev@nrsc.org)
- Dharma Raj Pandey, head of department, disaster management; phone: +977 98511 30168; email: [dharmaraj.pandey@nrsc.org](mailto:dharmaraj.pandey@nrsc.org)
- Umesh Dhakal, head of emergency response operation (ERO); phone: +66 2661 8201; email: [umesh@nrsc.org](mailto:umesh@nrsc.org)
- 

### IFRC Nepal country office:

- Yadav Prasad Dahal, acting head of country office; mobile: +977 985110 8942; email: [yadav.dahal@ifrc.org](mailto:yadav.dahal@ifrc.org)
- Sanjeev Hada, head of national society development unit, mobile: + 977 9801142412; email: [sanjeev.hada@ifrc.org](mailto:sanjeev.hada@ifrc.org)

### IFRC Asia Pacific regional office in Kuala Lumpur:

- Martin Faller, deputy regional director; email: [martin.faller@ifrc.org](mailto:martin.faller@ifrc.org)
- Nelson Castaño Henao, head of DCPRR unit; email: [nelson.castano@ifrc.org](mailto:nelson.castano@ifrc.org)
- Mathieu Léonard, operations coordinator; mobile: +6019 620 0357; email: [mathieu.leonard@ifrc.org](mailto:mathieu.leonard@ifrc.org)
- Riku Assamaki, regional logistics coordinator; mobile: +6012 298 9752; email: [riku.assamaki@ifrc.org](mailto:riku.assamaki@ifrc.org)
- Sophie, relationship manager: emergencies; phone: +60 3 9207 5700; email: [diana.ongiti@ifrc.org](mailto:diana.ongiti@ifrc.org)
- Clarence Sim, PMER Manager; email: [clarence.sim@ifrc.org](mailto:clarence.sim@ifrc.org)

### IFRC Geneva:

- Susil Perera, senior officer, response and recovery; phone: +412 2730 4947; email: [susil.perera@ifrc.org](mailto:susil.perera@ifrc.org)
- Cristina Estrada, response recovery lead; phone: +412 2730 4260; email: [cristina.estrada@ifrc.org](mailto:cristina.estrada@ifrc.org)



[Click here](#) to return to the title page

[Click here](#) to the DREF budget

[Click here](#) to the map

---

## How we work

All IFRC assistance seeks to adhere to the **Code of Conduct** for the International Red Cross and Red Crescent Movement and Non-Governmental Organizations (NGO's) in Disaster Relief and the **Humanitarian Charter and Minimum Standards in Humanitarian Response (Sphere)** in delivering assistance to the most vulnerable. The IFRC's vision is to inspire, **encourage, facilitate and promote at all times all forms of humanitarian activities** by National Societies, with a view to **preventing and alleviating human suffering**, and thereby contributing to the maintenance and promotion of human dignity and peace in the world.

---

The IFRC's work is guided by Strategy 2020 which puts forward three strategic aims:



**Save lives,**  
protect livelihoods,  
and strengthen recovery  
from disaster and crises.



Enable **healthy**  
and **safe** living.



Promote **social inclusion**  
and a culture of  
**non-violence** and **peace**.

---

# DREF OPERATION

13/08/2017

MDRNP009 Nepal : Monsoon Floods and Landslides

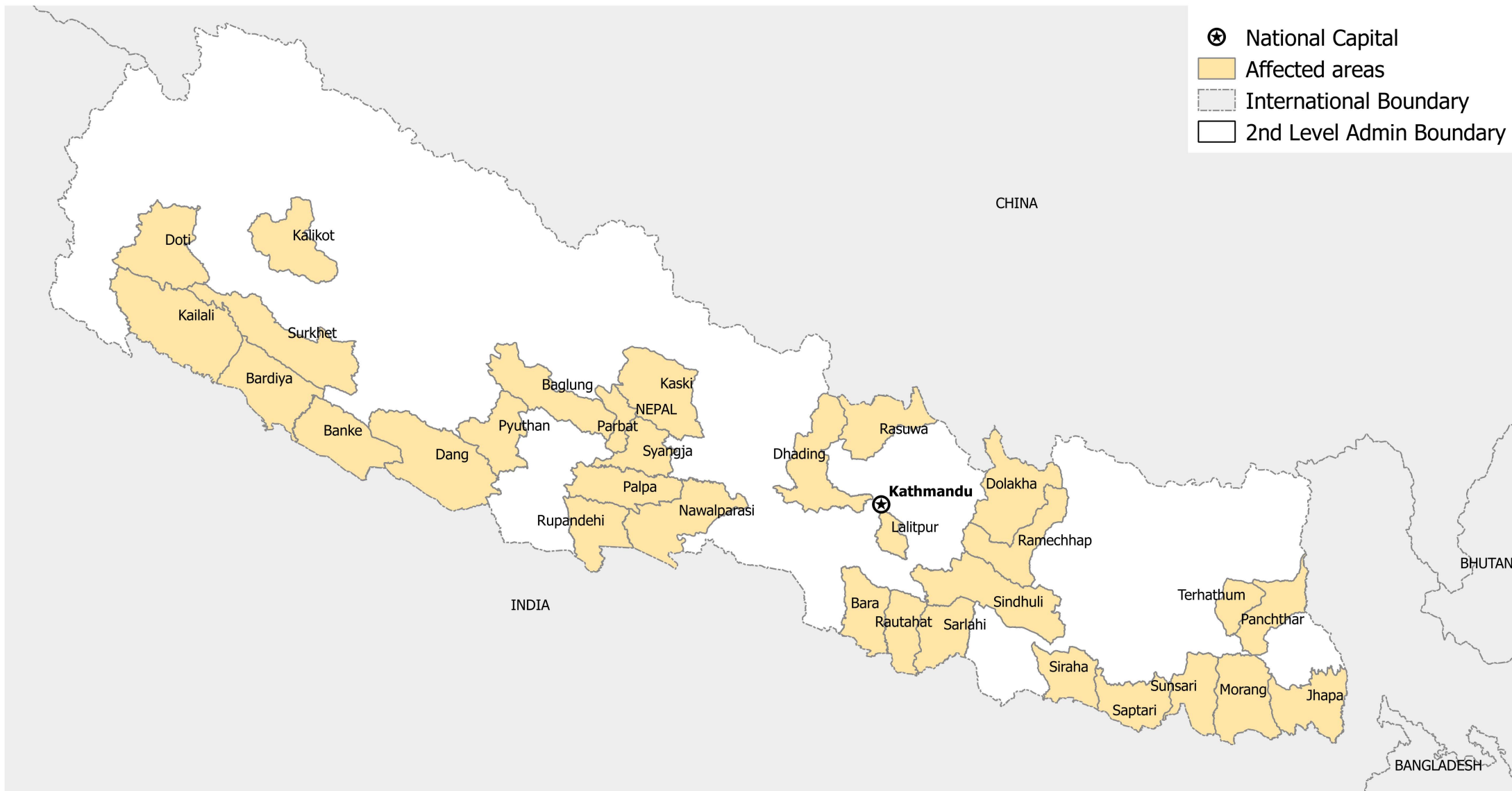
<b>Budget Group</b>	<b>DREF Grant Budget CHF</b>
Shelter - Relief	127,277
Clothing & Textiles	92,806
Food	41,100
Water, Sanitation & Hygiene	23,628
Ustensils & Tools	3,315
Other Supplies & Services	19,887
Cash Disbursements	41,100
<b>Total RELIEF ITEMS, CONSTRUCTION AND SUPPLIES</b>	<b>349,112</b>
Dsitribution & Monitoring	17,039
Transport & Vehicle Costs	26,895
<b>Total LOGISTICS, TRANSPORT AND STORAGE</b>	<b>43,933</b>
National Society Staff	18,126
Volunteers	7,046
<b>Total PERSONNEL</b>	<b>25,171</b>
Workshops & Training	13,589
<b>Total WORKSHOP &amp; TRAINING</b>	<b>13,589</b>
Travel	10,173
Information & Public Relations	2,368
Office Costs	16,732
Communications	5,682
<b>Total GENERAL EXPENDITURES</b>	<b>34,954</b>
Programme and Supplementary Services Recovery	30,339
<b>Total INDIRECT COSTS</b>	<b>30,339</b>
<b>TOTAL BUDGET</b>	<b>497,099</b>



International Federation of Red Cross and Red Crescent Societies  
Fédération internationale des Sociétés de la Croix-Rouge et du Croissant-Rouge  
Federación Internacional de Sociedades de la Cruz Roja y de la Media Luna Roja  
الاتحاد الدولي لجمعيات الصليب الأحمر والهلال الأحمر

## Nepal, Floods: DREF Operation

14 August 2017 • MDRNP009 • Glide n° FL-2017-000107-NPL



The maps used do not imply the expression of any opinion on the part of the International Federation of the Red Cross and Red Crescent Societies or National Societies concerning the legal status of a territory or of its authorities. Map data sources: ICRC, IFRC, OCHA

0 50 100 150 200 km

