

www.ifrc.org
Saving lives,
changing minds.

Emergency Plan of Action (EPoA) DRC: Population Movement

 International Federation
of Red Cross and Red Crescent Societies

DREF n° MDRCD022	GLIDE n° CE-2017-000116
Date of issue : 17 August 2017	Timeframe covered by this update: 17 August to 16 October 2017
Operation manager (responsible for this EPoA): Josuane Flore TENE, DCPRR Coordinator, Central Africa Cluster	Point of contact DRC RC (name and title): Moise KABONGO NGALULA, DRC RC Disaster management director
Operation start date: 17 August 2017	Operation timeframe: 2 months
Operation budget: CHF 253,588	DREF allocation: CHF 253,588
N° of people being assisted: 612 families or 3,060 people displaced in Kwilu, Sankuru and Lomami provinces.	
Red Cross Red Crescent Movement partners currently actively involved in the operation: International Federation of Red Cross and Red Crescent Societies (IFRC), ICRC and in-country Movement partners i.e. Belgium RC and Canadian RC	
Other partner organizations actively involved in the operation: The DRC government, UNOCHA, UNICEF, UNHCR, WFP, ECHO,	

The DRC RC seeks DREF support of **CHF 253,588** to support its initial response of health, water, sanitation and hygiene, shelter and non-food items for IDPs from Kasai conflict who have found shelter in neighboring provinces of **Lomami, Sankuru and Kwilu**. **In parallel to the initial response, the DREF will support DRC RC to conduct an emergency multi-sector needs assessment of this complex humanitarian situation.**

Given the complex humanitarian needs, DRC RC, IFRC and partner NSs intend to position itself with a well-defined operational strategy and plan that relies on a comprehensive needs assessment to be carried out as part of this emergency phase by engaging a multi-disciplinary technical team such as FACT, ERU and RDRT or joint Movement partners team.



Photo: DRC-Returnees in DRRC local branches in Kananga, July 2017

A ToR of the assessment has been finalized in wider consultation with in-country Movement partners. An alert for deployment of 2 RDRTs will be deployed in the assessment. The emergency assessment will define

the scale and scope of specific needs of IDPs with a framework focused on DRC RC branches for multi-sector (relief, health, WATSAN, food security, shelter and non-food items, etc.) interventions. There will also be regular data collection, monitoring and reporting to ensure that response is in line with evolving needs of households.

The preparation of the assessment i.e. formation, composition of the team, methodologies, geographical space and timeframe has been completed. The assessment team will be deployed in the field for 10 days. The assessment report will be finalized between 3 to 5 days after the end of the mission.

A. Situation analysis

Description of the disaster

Since August 2016, 1.4 million inhabitants of Grand Kasai, which represents 34% of the total IDPs in DRC, have been forced from their homes, escaping violence perpetrated by a variety of armed actors. Within the whole country, around 2 million children under 5 are facing severe malnutrition and 660,000 people are at risk of cholera. According to OCHA, only 156,000 of the 1.4 million IDPs received emergency assistance from new funding this year. The WFP has said that 42 percent of households in Kasai, Kasai-Central and Kasai-Oriental are food insecure. In addition to the IDPs around 1 million people have crossed borders and taken refuge in neighboring countries¹ in recent years.

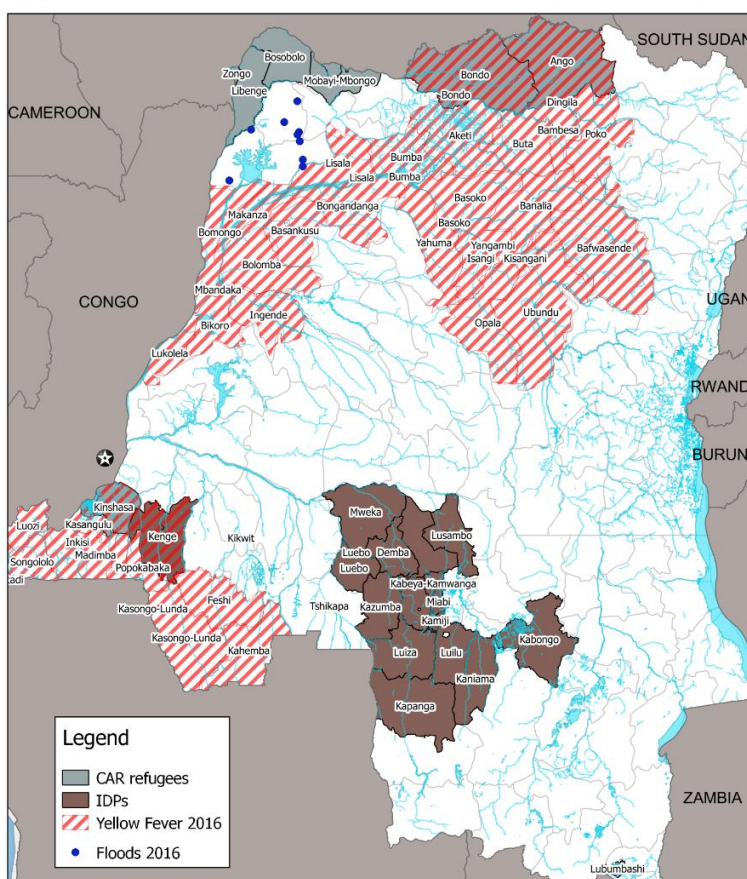
As a result of continued violence and an ongoing lack of basic resources, the number of people in need of humanitarian assistance has increased to 7.3 million. This number is likely to grow due to difficult humanitarian access. Seven out of 16 territories in the five conflict-affected areas are not accessible due to security constraints. The enormous distances between the various intervention sites coupled with poor transport (both road and air) infrastructure result in very high costs and above average delivery time.

Although continuous efforts are being made to end this crisis, the flow of IDPs has not stopped, but rather increased by 23%. On an average 8,000 new IDPs people per day are recorded since mid-April 2017. Support is therefore sought for IDPs and host communities to improve the condition of their shelter, health care, access to clean water and sanitation, protection and the sustainable return of people to points of origin or other, safer places. Most of the displaced, who have lost or left behind all their essential goods and personal belongings and now live with host families and relatives in communities that are among the poorest in the country. Smaller number of displaced families have fled to improvised huts in the bush near their villages. These families are the most vulnerable and least accessible to humanitarian workers. They suffer from lack of adequate food, shelter, healthcare, water and sanitation.



DR Congo: Complex Humanitarian Situation

20 July 2017



The maps used do not imply the expression of any opinion on the part of the International Federation of the Red Cross and Red Crescent Societies or National Societies concerning the legal status of a territory or of its authorities. Map data sources: GADM, IPRC, ECHO. Map produced by: IPRC Africa Regional Office.

0 100 200 300 400 km



¹ Angola, Burundi, Central African Republic (CAR), Rwanda and Uganda

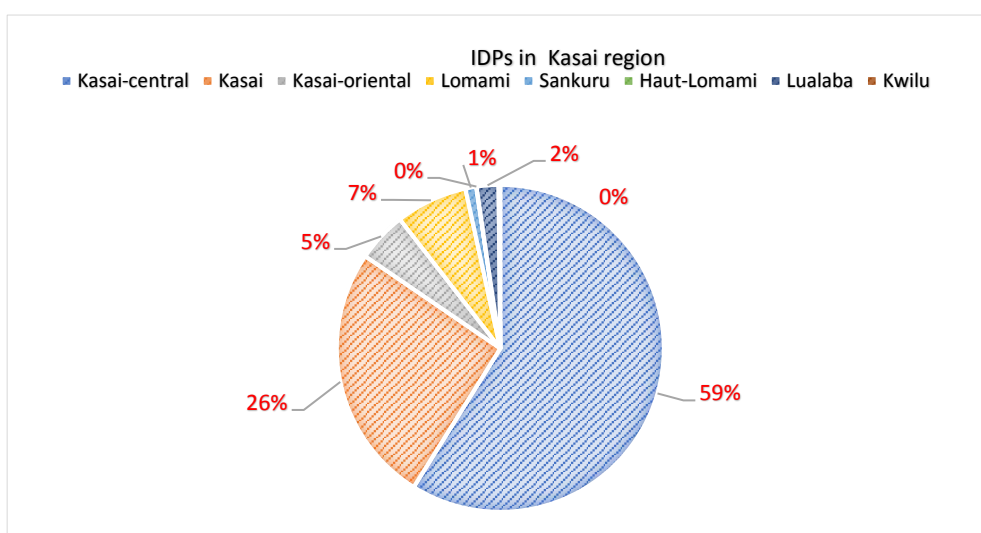
The recent conflict in Kasai region has further worsened the humanitarian situation in DRC. The conflict pattern has become characterized by extreme violence spread over new regions compounded with protracted food crisis, frequent natural disasters, disease outbreak and poor infrastructure. The conflict started in August 2016 in Kasai Central and is now affecting five regions up to Sankuru. The number of IDPs in conflict-affected regions has increased by 23% - 8,000 new IDPs per day on average since mid-April 2017.

The table below presents tentative breakdown of IDPs and returnees in Kasai crisis-affected provinces, including potential double-counting due to pendulum, preventive and secondary displacement.

Table 1: IDPs, returnees and refugees affected in Kasai crisis (as of 31st May 2017)

Province	Total population	IDPs	Returnees	Refugees	Host communities
Kasai-central	4,125,700	766,500	-	-	99,000
Kasai	4,088,700	333,900	-	-	-
Kasai-oriental	5,364,500	64,300	97,100	-	31,000
Lomami	2,831,700	92,400	43,300	-	-
Sankuru	1,784,300	14,000	-	-	-
Haut-Lomami	3,496,200	400	-	-	-
Lualaba	2,011,900	28,000	-	-	-
Kwilu	4,458,600	2,200	-	-	-
Luanda-Norte(Angola)	-	-	-	23,515	-
Total	28,161,600	1,301,700	140,400	23,515	130,000

The Kasai central province shares around 60% of total IDPs followed by 26% in Kasai. Among others, Lomami and Kasai oriental shares 7% and 5% respectively. Humanitarian response will therefore focus mainly on host communities not directly affected by conflict in Lomami, Sankuru and Kwilu.



Summary of current response

Overview of Host National Society

The DRC RC is a neutral humanitarian organization and auxiliary to the public authorities. At the national HQs there is an operational management structure including six technical departments and professionals trained as part of the National Disaster Response Team (NDRT). The DRC RC has provincial disaster response intervention teams (PDRT) with 110 members, NDRT with 30 members, and 10 staff members that are a trained regional disaster response team (RDRT). Moreover, the DRC RC has a pool of approximately 130,000 registered volunteers, of which 60,000 are active.

The DRC RC has one branch in each of the 26 provinces. The DRC RC has a lot of experience managing natural disasters and civil unrest. Recurrent disasters in the country include floods, volcanic eruptions, landslides, population movements and air crashes.

Overview of Red Cross Red Crescent Movement in country

The recent conflict in Kasai has triggered Movement partners to review readiness and to discuss how they can reinforce DRC RC's efforts in delivering humanitarian assistance to the new influx of IDPs. There has

been regular interaction and discussion between Movement partners since beginning of the crisis. On behalf of the DRC RC National President, movement partners in-country met on 11 July 2017 and agreed upon a common approach for a Movement wide multi-sector needs assessment regarding the Kwilu, Lomami and Sankuru provinces. The DRC RC National President has requested IFRC's support to conduct the needs assessment in these provinces.

Following missions of the DRC RC in May 2017, ICRC and DRC RC have already organised a joint operation in Kikwit in July-August to assist 2.000 IDPs with food and cash assistance. It was considered that IFRC and DRC RC could take over this operation if the IDPs in Kikwit still have needs. A meeting between IFRC (Representative), ICRC (Heads of Ecosec and Cooperation in DRC) and DRC RC (Head of DM) will be organized for a debriefing about this operation and to evaluate if continuity is possible and necessary thanks to the present DREF.

In addition, a bilateral meeting between IFRC and ICRC took place in July at Kinshasa to exchange updates on needs assessment and coordination for operational planning. Coordination between IFRC and ICRC has been established, agreements have been reached on areas of intervention, targeting and geographical locations. ICRC has just opened an office in Kananga (Kasai Central) and has been implementing activities in the Kasai, Kasai Central and Kasai Oriental since June 2017 (detention, RFL, support to the DRC RC branches, etc.).

Moreover, strategic meeting on Kasai crisis between IFRC (acting representative), ICRC (Coop. Coordinator and HoD) and DRC RC (President) were held on 03 August and 09 August 2017. A draft agreement on Movement coordination relating to Kasai crisis is being consolidated on Kinshasa level.

Overview of non-RCRC actors in country

The humanitarian response community has been overwhelmed. The UN has launched a flash appeal for additional funding and ECHO has granted additional Euro 5,000,000 for Humanitarian Implementation Plan (HIP) to cover increased humanitarian needs. The ECHO additional grant is targeted to support food, nutrition, health, water sanitation and hygiene, non-food items/shelter, education, protection/child protection, advocacy and disaster risk reduction.

UNOCHA has launched a Flash Appeal for the Kasais for US\$64.5 million to assist 731,000 with lifesaving assistance over six months. In 2017, humanitarian response plan has increased its requirement to \$812.5 million to deliver humanitarian assistance to people in need.

Needs analysis and scenario planning

According to the UN, there are immediate needs health, WASH, shelter and NFIs. In addition, local Red Cross committees also require support to meet community expectations, particularly around awareness-raising, sanitation and emergency latrine construction.

However, the information available to date is not detailed enough to ensure an effective operation to be planned and implemented given the complexity of the crisis. Thus, a need to prepare a more detailed and in-depth assessment, to collect more detailed data on the situation to confirm and better plan the response to meet the needs in the various sectors.

For the purposes of this operation, the following activities are essential.

Conduct a thorough and detailed assessment of the situation

The assessment mission will be carried out jointly by the IFRC, DRC RC (at headquarters and local branches) and PNSs team. In addition, the assessment will suggest areas for strengthening coordination between DRC RC and neighboring national societies regarding transboundary collaboration over refugees and IDPs. The Movement partners met and nominated technical experts in respective sectors for the assessment. This assessment will focus on the situation of IDPs in Lomami, Sankuru and Kwilu provinces be coupled with the implementation of some activities in the following areas:

WASH

- Hygiene promotion by sensitizing IDPs and Host population on hygiene rules to avoid epidemics in the 3 provinces. This activity will be carried out in favour of 612 families.
- Environmental sanitation by the local volunteer team. Sanitation kits will be made available to the volunteers (shovels, hoes, wheelbarrows etc.). Besides, there are also bibs for volunteers and posters as well as flip charts for sensitization. Megaphones with batteries will also be made available to volunteers for this activity.
- Distribution of Aqua tabs or sachets of Pure to purify drinking water in line with SPHERE standards, and demonstration sessions on how to use them. The DRC RC had set up sensitization teams in charge of water purification.
- Train population of targeted communities on safe water storage and safe use of water treatment products
- Monitor treatment and storage of water through household surveys and household water quality tests.

Health

- Provision of first aid kits for volunteers in each of the 3 provinces. These kits will be used to provide first aid to IDPs and Host population. Each province main town will need 15 first-aid kits and 3 kits will be made available for the mission team, making it a total of 48 first aid kits.

Distribution of NFI Kits

- Procurement, transportation and distribution of NFIs (blankets, tarpaulins, mats and kits, buckets, jerrycans and hygiene kits for women of childbearing age), for the most vulnerable. Also, since most of these families are homeless, it is planned to distribute tarpaulins to solidify makeshift shelters

Beneficiary selection

Due to the situation of conflict Kasai, the entire population, IDPs and host population, are considered as vulnerable. However, with the support of DRC RC and other partners in the field, the selection criterion will focus women headed households with children aged 10 and below; pregnant and lactating women, the elderly, persons with disabilities and unaccompanied minors (UAM). The assessment will allow supporting more affected people with a clearer picture of the situation on the field, by redefining new selection criteria.

Risk Analysis

The risk for carrying out this operation remains around security and logistics, as the affected areas are notably difficult to access. Air transportation is the safest means of transportation, but costs are very high.

The multi-sector needs assessment will identify specific needs and target populations to be provided with humanitarian assistance.

The multi-sector needs assessment will take place in provinces of Kwilu, Sankuru and Lomami provinces. The following table provides a breakdown of IDPs living in these provinces. Thus, the assessment will define the people to be assisted accordingly.

Provinces	Total populations	IDPs	Returnees
Lomami (Ngandajika & Kabinda & Mwene Ditu)	2,831,700	95,400	43,300
Sankuru (Lusanbo)	1,784,300	14,000	–
Kwilu (Idiofa & Gungu)	4,458,600	13,000	–
Total	9,074,600	122,400	43,300

The ToR has defined that the assessment will analyze the context and focus needs of people in health, WASH, food, livelihood, shelter and associated essential/household items, protection against gender and sexual violence, capacity building of DRC RC branches. In addition, it will suggest areas for strengthening coordination between DRC RC and neighboring national societies regarding transboundary collaboration over refugees and IDPs. The Movement partners met and nominated technical experts in respective sectors for the assessment.

B. Operational strategy and plan

Overall Objective

The initial response in health, water, sanitation and hygiene, shelter and non-food items for IDPs will help reduce further deterioration of humanitarian conditions for the most vulnerable, and being to allow people to settle into temporary settings.

While providing the initial response, the DRC RC together with IFRC and other Movement partners will conduct a multi-sector assessment of the situation of IDPs in Lomami, Sankuru and Kwilu provinces.

The main purpose of the multi-sector needs assessment is aimed at defining the strategy and specific target groups for strengthening IFRC's support to the DRC Red Cross Society in delivering humanitarian assistance to affected people in Kwilu, Sankuru and Lomami provinces. The mission will also support the distribution of health care, water, sanitation and hygiene, shelter and non-food items activities to the most vulnerable people.

Specific objectives-

- to provide IDPs with initial response of health, water, sanitation and hygiene, shelter and non-food items;
- to procure, transport and distribute NFIs, such as blankets, kitchen kits, mosquito nets, buckets and jerry cans, as well as hygiene kits for women of childbearing, age and other vulnerable people, who will be identified during the assessment mission.
- to assess scale and scope of specific needs of IDPs and define a framework focusing on DRC RC branches for a multi-sector intervention in DRC (relief, health, WATSAN, food security, shelter and non-food items, etc.);
- to facilitate the appropriate response (eg: EA) that will enable the DRCRC to assist the most vulnerable IDPs affected by Kasai conflict in the three selected provinces; and
- to propose an IFRC comprehensive and interdisciplinary support structure required for emergency and long-term operations.

Proposed strategy

- Based on its specific mandate, the ICRC will intervene in provinces affected by conflict while IFRC will assist IDPs that found shelter in safer communities not directly affected by conflict. In both cases, they will ensure a consistent approach by strengthening open and fluent exchange of information and coordination on assessment, planning, monitoring and implementation of the operations.
- IFRC will work in collaboration with DRC RC and in-country Movement partners including ICRC and partner NS's to ensure a coordinated operational setup. Together with DRC RC and ICRC, IFRC will promote SMCC (Strengthening Movement Coordination and Cooperation) to reinforce inclusiveness in the operation in terms of who is best place for what. Moreover, IFRC will bring in knowledge, skill and capacity to the operational planning, implementation and monitoring through its joined leadership groups such as ADMAG (African Disaster Management Working Group) and its world-wide network.
- [Participatory needs assessment tools such as VCA](#);
- [Guidelines for assessment in emergencies](#);
- [IFRC Minimum standard commitments to gender and diversity in emergency programming](#);
- [Community Engagement and Accountability \(CEA\) tools, Better Programming Initiative: Options for better aid programming in post-conflict settings](#); and
- SPHERE Standards will be applied in multi-sectors needs assessment.

Operational support services

Human resources

For the implementation of the activities, the DRCRC will deploy 60 volunteers (20 for each provinces) and 6 supervisors (2 for each provinces).

Concerning the assessment, the team comprising of technical experts from Movement partners i.e. DRC RC, PNSs and IFRC has been formed. The technical role includes coordination, health, WASH, food security/livelihood, shelter, gender and diversity, community engagement and accountability, national society capacity building, logistics, security, communication and PMER. In addition, two RDRTs expert in multi-sector needs assessment are being deployed. Human resources identified for the assessment will be deployed for a period of less than one month, to conduct the assessment, collect data, monitor and report on progress on a regular basis, and revise the plan of action, considering the data collected from the field. The assessment will be led by DRC RC Secretary General and IFRC Acting Representative for DRC.

Overall responsibility for the successful implementation, reporting and compliance of this DREF will be the head of the cluster office.

Logistics and supply chain

The logistics teams of DRCRC and the IFRC will work together to procure the items that will be transported to Sankuru, Lomami and Kwilu provinces.

Logistics and supply chain

The logistics teams of the DRC RC and the IFRC will work together to procure the items that will be stored in the warehouse at the national headquarters of DRC RC and later transported to North Ubangi province, the implementing area, before being shipped to various sites.

Procurement plans: Local procurement of all items will be carried out with support from the IFRC Central Africa Cluster due to the challenges in transporting items from Yaounde, Cameroon to Kinshasa, DRC in terms of cost and timeliness. The IFRC Central Africa, Africa region and Global Logistics Service (in Dubai) will ensure that the DRC is equipped with relevant information on the procurement procedures; and the RDRT will be expected to support them to ensure compliance.

Transport and fleet needs: Transportation from Kinshasa to the provinces of Sankuru and Lomami is only by air and very expensive. Given the availability of NFIs in the city of Lusambo and Kabinda, and the proximity of the city to the implementation areas, purchases should be made on site in those provinces.

Therefore, the cost of transport at the local level is budgeted for purchase and distribution. This involves the rental of a vehicle on the field for the implementation of the activities.

Logistics and warehousing: The NS has a warehouse at the national headquarters (Kinshasa), but on the field, it will be necessary to rent a warehouse for the storage of NFIs before their distribution as well as the purchase of the pallets. It will be necessary to ensure the security of the rented warehouse.

The DRC RC with support of IFRC and Movement partners i.e. partner NSs will organize appropriate transport to access the remote locations. The assessment team will maintain liaison with logistics cluster in terms of communication infrastructure and seek assistance if needed.

IFRC Africa Regional logistics department will provide necessary guidance in dealing with safe transportation, procurement and supply chain.

Information technologies (IT)

In consultation with DRC RC, IFRC will ensure appropriate IT equipment for the assessment team to be able to communicate with Kinshasa HQ base, Yaoundé and Nairobi. Depending on the needs, provision of alternative telecommunication equipment such SATPHONE, BGAN will be made.

Communications

IFRC regional communication officer based in Yaoundé and DRCRC Head of communication will take overall responsibility for communication related to the assessment. An additional local hire will support this effort. In addition, IFRC Africa Regional Communication manager will provide guidance and support the team in addressing communication needs.

Security

The IFRC employs a preventative approach to security and safety. Security management accountability rests with the field manager, i.e. the Head of CCST Yaoundé. An in-country Security Focal Point has been appointed to address security and safety on a day to day basis. Considering the prevailing security environment in the country, including in the implementation area and its environs, an adequate security management system is required for this and all other operations in DRC. This includes but is not limited to relevant security assessments, security plans, contingency plans, security briefings, and trainings. All RC/RC personnel (incl. IFRC, RDRT, NDRT, volunteers, supervisors, and local personnel) deployed as part of this operation must be covered by a relevant insurance, and must have completed the relevant IFRC online security courses (Stay Safe Personal Security, Security Management, or Volunteer Security). In particular, the IFRC and DRC RC must ensure good and consistent security and safety analysis and staff/mission tracking.

IFRC will maintain liaison with ICRC about access to affected provinces. The IFRC Africa Regional Security Coordinator will provide necessary guidance and advice to the team during the course of the assessment. A security professional is expected to join the assessment team. Prior to the deployment of the assessment team in the field, a security briefing will be organized.

However, as part of this operation, a IFRC security officer will be deployed to conduct in-depth security analysis and put in place a more robust security plan in the assessment area.

Planning, monitoring, evaluation, & reporting (PMER)

The DRC RC PMER officer and IFRC regional communication officer, PMER Officer based in Yaoundé will also cover the PMER. In addition, IFRC Africa Regional PMER team will remotely provide support to conduct the assessment and produce the assessment report.

Partnerships and Resource Development

Partnership between Movement partners in country regarding the multi-sector needs assessment has been established. Partners' calls on DRC were held on 31 July and 16 August 2017 to brief them on the current ICRC and DRC RC operations and to announced the planned IFRC assessment. And assessment report will be shared with Movement partners indicating the plan for complex humanitarian response.

Two first strategic meetings (IFRC, ICRC and RCDRC) were held on 3 and 9 August 2017.

As already set up, IFRC, DRCRC and ICRC are coordinating with in terms of information sharing and coordination at various levels.

Water, sanitation and hygiene



The IDPs are living at risk of outbreak of water and vector borne diseases. The intervention will help communities improve their through provision of water purification solutions, sanitation measures and hygiene awareness campaign. The DRC RC will coordinate with Unicef , WASH Cluster and other agencies operating in the communities to deliver context specific services.

Outcome 3: Immediate risk of waterborne diseases is reduced through the provision of improved sanitation and hygiene promotion in targeted provinces during two months.												
Output 3.1: Target population is provided with access to safe water.												
Activities planned weeks	1	2	3	4	5	6	7	8	9	10	11	12
Procure and distribution of Aquatabs or Pure tablets for purification of drinking water followed by demonstration sessions on use for the 612 most vulnerable families identified in line with SPHERE standards.												
Output 3.2 Target population is provided with adequate environmental sanitation measures (60 volunteers and 6 supervisors in 3 provinces)												
Activities planned weeks	1	2	3	4	5	6	7	8				
Procurement of environmental sanitation materials and protective equipment												
Output 3.3 Target population is provided with hygiene promotion, which meets SPHERE standards												
Activities planned weeks	1	2	3	4	5	6	7	8		2	3	
Training of volunteers on hygiene promotion and the use of IEC materials (Target: 60 volunteers + 6 volunteer supervisors)												
Production of information, education and communication materials (Target: 750 posters, 750 leaflets, and 9 image boxes)												
Conduct hygiene promotion and sanitation activities through mass sensitizations in the 12 villages assessed												
Procurement /distribution of hygiene related NFIs comprising buckets (one pc per family), hygiene/dignity kits (one pc per family), jerry cans (one pc per family) and soap (10 pcs per family); and provide sensitization on their use (Target: 612 families) ; for the 612 most vulnerable families identified.												



Shelter and settlements

In a temporary or spontaneous setting, people are living in fragile or makeshift houses and they are unable to maintain protection, privacy and safety. The intervention in shelter and essential household items i.e. beds, cooking utensils, etc, will help people improve their living condition.

Outcome 4 : Immediate settlement needs of the target population in affected areas of (Lomami, Sankuru et Kwilu) are met over a period of two months												
Output 4.1: Target population is provided with Non-Food Items (NFIs) and emergency shelter items												
Activities planned weeks	1	2	3	4	5	6	7	8	9	10	11	12

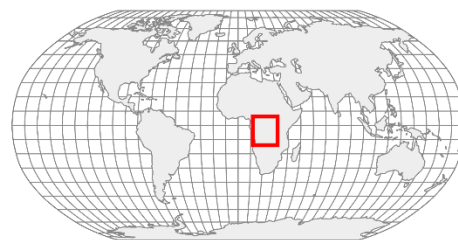
Procurement/transportation of NFIs in accordance with IFRC procurement standards (tarpaulins (two pcs per family), blankets (two pcs per family), kitchen sets (one pc per family), mats (two pcs per family), (Target: 612 families)												
Mobilization of volunteers for a distribution (Target: 45 volunteers + 6 volunteer's supervisors)												

D. Budget

Budget Group	DREF Grant Budget	Budget CHF
Shelter - Relief	49,450	49,450
Shelter - Transitional	0	0
Construction - Housing	0	0
Construction - Facilities	0	0
Construction - Materials	0	0
Clothing & Textiles	37,087	37,087
Food	0	0
Seeds & Plants	0	0
Water, Sanitation & Hygiene	7,609	7,609
Medical & First Aid	2,727	2,727
Teaching Materials	2,665	2,665
Utensils & Tools	18,420	18,420
Other Supplies & Services	10,508	10,508
Emergency Response Units	0	0
Cash Disbursements	0	0
Total RELIEF ITEMS, CONSTRUCTION AND SUPPLIES	128,467	128,467
Land & Buildings	0	0
Vehicles Purchase	0	0
Computer & Telecom Equipment	0	0
Office/Household Furniture & Equipment	0	0
Medical Equipment	0	0
Other Machinery & Equipment	0	0
Total LAND, VEHICLES AND EQUIPMENT	0	0
Storage, Warehousing	1,919	1,919
Distribution & Monitoring	15,150	15,150
Transport & Vehicle Costs	13,665	13,665
Logistics Services	0	0
Total LOGISTICS, TRANSPORT AND STORAGE	30,734	30,734
International Staff	8,886	8,886
National Staff	1,620	1,620
National Society Staff	2,020	2,020
Volunteers	11,775	11,775
Total PERSONNEL	24,301	24,301
Consultants	0	0
Professional Fees	1,010	1,010
Total CONSULTANTS & PROFESSIONAL FEES	1,010	1,010
Workshops & Training	17,122	17,122
Total WORKSHOP & TRAINING	17,122	17,122
Travel	30,999	30,999
Information & Public Relations	438	438
Office Costs	0	0
Communications	3,525	3,525
Financial Charges	1,515	1,515
Other General Expenses	0	0
Shared Support Services		
Total GENERAL EXPENDITURES	36,477	36,477
Programme and Supplementary Services Recovery	15,477	15,477
Total INDIRECT COSTS	15,477	15,477
TOTAL BUDGET	253,588	253,588

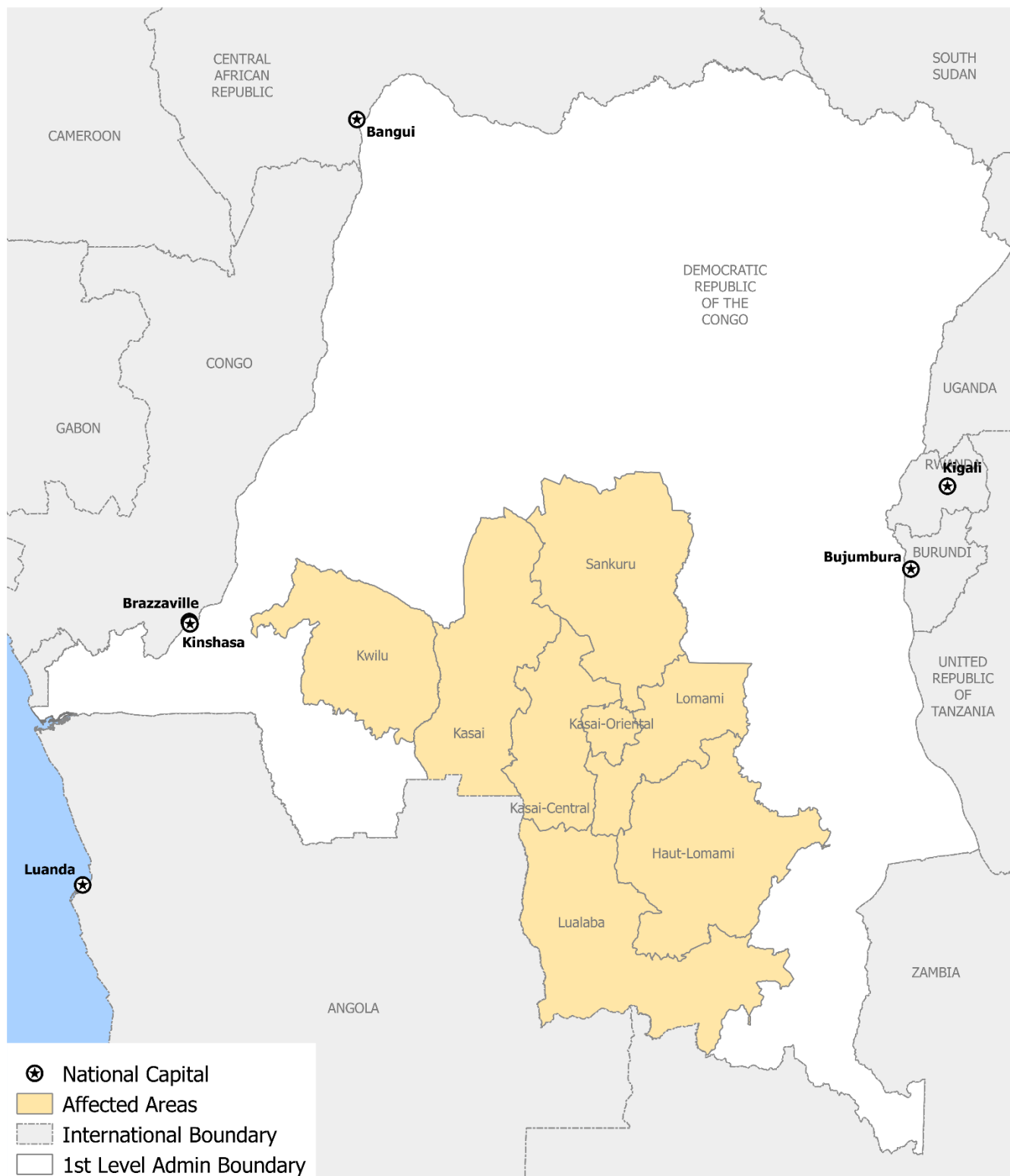


International Federation of Red Cross and Red Crescent Societies
 Fédération internationale des Sociétés de la Croix-Rouge et du Croissant-Rouge
 Federación Internacional de Sociedades de la Cruz Roja y de la Media Luna Roja
 الاتحاد الدولي لجمعيات الصليب الأحمر والهلال الأحمر



Democratic Republic of the Congo, Complex Emergency: DREF

17 August 2017 • CE-2017-000116-COD



The maps used do not imply the expression of any opinion on the part of the International Federation of the Red Cross and Red Crescent Societies or National Societies concerning the legal status of a territory or of its authorities.
 Map data sources: ICRC, IFRC, OCHA

Contact information

For further information specifically related to this operation please contact:

- **DRC Red Cross:**
 - MITANTA MAKUSU Mamie, Secretary General DRC RC; Email: sgcrrdc@croixrouge-rdc.org
 - Moise KABONGO, National Disaster Management Director, Tél : +243 852387181; email: moise.kabongo@yahoo.fr
- **IFRC Yaoundé Office:**
 - Andrei Engstrand Neacsu, Head of Cluster, IFRC Yaounde Multi-country Cluster Support Office for Central Africa; phone: +237 677117797; Email: ANDREI.ENGSTRANDNEACSU@ifrc.org
- **IFRC Kinshasa**
 - Zinedine, Operations Manager and Acting Representative for IFRC DRC, +243 853 468 057; email: zinedine.kada@ifrc.org
- **IFRC Regional Office for Africa:** Farid Abdulkadir, Disaster Crisis Prevention, Response and Recovery (DCPRR) Coordinator, Email: farid.aiywar@ifrc.org
- **IFRC Geneva:** Christine South, Operations Quality Assurance Senior Officer; phone: +41.22.730.45 29; Email: christine.south@ifrc.org
- **IFRC Zone Logistics Unit (ZLU):** Rishi Ramrakha, Head of zone logistics unit; Tel: +254 733 888 022/ Fax +254 20 271 2777; Email: rishi.ramrakha@ifrc.org

For Resource Mobilization and Pledges:

- **IFRC Africa Region:** Kentaro Nagazumi, Resource Mobilization Coordinator; Africa Region; phone +254 731 984 117 or +81 90 8689 9793: Email: Kentaro.NAGAZUMI@ifrc.org

For Performance and Accountability (Planning, Monitoring, Evaluation and Reporting):

- **IFRC Africa Region:** Fiona Gatere, PMER Coordinator; phone: +254 780771139; Email: fiona.gatere@ifrc.org

How we work

All IFRC assistance seeks to adhere to the **Code of Conduct** for the International Red Cross and Red Crescent Movement and Non-Governmental Organizations (NGO's) in Disaster Relief and the **Humanitarian Charter and Minimum Standards in Humanitarian Response (Sphere)** in delivering assistance to the most vulnerable. The IFRC's vision is to inspire, **encourage, facilitate and promote at all times all forms of humanitarian activities** by National Societies, with a view to **preventing and alleviating human suffering**, and thereby contributing to the maintenance and promotion of human dignity and peace in the world.

The IFRC's work is guided by Strategy 2020 which puts forward three strategic aims:



Save lives,
protect livelihoods,
and strengthen recovery
from disaster and crises.



Enable **healthy**
and **safe** living.



Promote social inclusion
and a culture of
non-violence and **peace.**