

www.ifrc.org
Saving lives,
changing minds.

Emergency Plan of Action (EPoA) Papua New Guinea: Volcanic Activity

 International Federation
of Red Cross and Red Crescent Societies

DREF n° MDRPG007	Glide n° VO-2018-000002-PNG
Date of issue: 12 January 2018	Expected timeframe: 3 months Expected end date: 11 April 2018
Category allocated to the of the disaster: Yellow	
DREF allocated: CHF 83,763	
Total number of people affected: 736¹	Number of people to be assisted: 640 (160 families)
Host National Society presence (n° of volunteers, staff, branches): Papua New Guinea Red Cross Society has 500 volunteers, 18 headquarter staff, seven branch staff and a presence in 13 administrative units of the country through branches	
Red Cross Red Crescent Movement partners actively involved in the operation: The National Society is working with the International Federation of Red Cross and Red Crescent Societies (IFRC).	
Other partner organizations actively involved in the operation: Provincial disaster committees (PDCs), National Disaster Committee and PNG Disaster Management Team, OXFAM	

A. Situation analysis

Description of the disaster

The remote Kadovar Island volcano became active on 5 January 2018 with mild volcanic activity on the south-eastern side of the island. The Governor's office conducted an aerial assessment and observed lava flow on the island with an estimated 50-60 per cent of the island covered in lava. The entire population has been relocated to Blup Blup Island, which is an island of about 800 people.

As of 6 January, prevailing wind conditions have carried ash clouds west of Kadovar island. Kadovar (Kadovar) is a small island belonging to the cluster of islands referred to as Schouten Islands. Kadovar is approximately 100km from Wewak (line of sight) and 24km to nearest point on mainland East Sepik province. Kadovar is part of Wewak Island Rural LLG in Wewak District, East Sepik Province.²



*Volcanic activity in Kadova Island on 6 January 2018.
Photo credit: Radio New Zealand [website](#)*

Since 6 January, the Wewak district administration has been working with the East Sepik provincial administration and the MP for Wewak to organize an evacuation. The MP for Wewak indicated that there were no district funds available currently as government accounts had yet to open for 2018. The National Disaster Centre (NDC) is currently coordinating closely with East Sepik provincial administration on establishing the current situation. On 7 January, a provincial assessment team was deployed. The NDC and East Sepik provincial administration are presently awaiting findings from the deployed assessment team.

¹ Different figures in the media were referring to 591 people. However, PNGRC verification with government authorities on 9 January indicates that 736 people have been evacuated from the island (total population of Kadovar island 736).

² Source: UNDP Disaster Management Team Secretariat

Due to the remoteness of the area, more information to get a clearer picture of the needs has yet to be received. According to the UND DMT situational update on 8 January, the Rabaul Volcanological Observatory (RVO) has assessed that there is a possibility for Kadovar to explode which could trigger similar explosions on Blup Blup and Biem islands (both volcanic islands as well). This may also trigger a tsunami due to landslides.

Summary of the current response

Overview of Host National Society

Papua New Guinea Red Cross (PNGRC) was established by an Act of Parliament in 1976, making it an auxiliary to the authorities. The National Society has a total of 500 volunteers, 25 staff and presence in all administrative units of the country through 13 branches. The National society has experience with managing six DREF operations in the past – including a [cholera response in 2009](#), a [drought response in 2015](#), as well as part of the [International Appeal response for Tropical Cyclone Pam in 2015](#) and [measles outbreak in 2017](#).

PNGRC is liaising closely with the Provincial Disaster Committee Team. PNGRC has a disaster management unit. The programme manager will take the lead for the operation, with technical support provided from the IFRC country and regional offices.

Overview of Red Cross Red Crescent Movement in country

IFRC has a country office in Papua New Guinea consisting of a head of country office as well as a finance delegate. Additional technical resources required to support this plan will come primarily from the Asia Pacific regional office based in Kuala Lumpur and IFRC country-cluster support team (CCST) office for the Pacific based in Suva, as well as the other Movement members, particularly those that have long standing cooperation with PNGRC, such as Australian Red Cross, New Zealand Red Cross and the International Committee of the Red Cross (ICRC). Partners are working on longer term planning towards supporting PNGRC with one aligned Movement support plan for greater efficiencies and drawing on the collective strengths of the Movement. IFRC Papua New Guinea country office will provide guidance and support to PNGRC throughout the duration of the operation.

Overview of non-RCRC actors in country

A joint PNG Disaster Management Team regularly meet once every month, hosted and chaired by National Disaster Committee (NDC). The Provincial Disaster Committee (PDC) and Rabaul Volcanological Observatory (RVO) is actively involved in current volcanic activities and supporting with information. UN agencies are closely observing the situation. A provincial coordination centre had been setup in the office of the Provincial Administrator and all assessment and relief arrangements will be done through the centre as per government advise.

Oxfam has an office in Wewak, East Sepik Province as they worked with the islands during drought; PNGRC is currently coordinating with Oxfam who is also planning a response.

Needs analysis, targeting, scenario planning and risk assessment

A key challenge for the moment is poor information from the province on the current status, on exact location of people and their condition, coupled with the remote location of the volcanic eruption. Due to remote nature of the island and difficulty in communications, minor unrest may have gone unreported.

The PNGRC chairman is in regular phone communication with the PNG authorities who has confirmed that 736 residents live on the island and were all evacuated. There are no reports of fatalities or injuries, therefore no immediate need for emergency first aid or medical emergency based on the current information. Since the whole population has been evacuated and based on reports this was done quickly and in small dinghies, there would have been little opportunity or space for evacuees to bring much more than a bilum (string bag), pointing to needs in emergency shelter and household items to address.

Based on the fact that the entire population has been relocated to the neighbouring island Blup Blup, there is a concern of the increase to the existing population, directly impacting the food and drinking water sources. As a preventive measure, the government is distributing food and drinking water for the next two weeks to supplement the supply of local food and water for a limited time. The overcrowded conditions may create sanitation and other issues linked with water. Therefore, emergency WASH and hygiene promotion is identified as gaps to address along with emergency shelter needed for the reallocated populations.

Finally, as the temporary relocated population might live in crowded conditions, there is increased risk of protection and gender issues, therefore the need to ensure the PNGRC staff and volunteers address these in each phase of this operation.

The PNGRC Chairman contacted deputy chair of PNGRC Madang Branch and will continue to communicate with contacts in Wewak for more information. The Madang Branch has pre-positioned stock of 400 mosquito nets and 200 jerry cans and will require some replenishment. In addition, PNGRC is assessing emergency stocks in headquarters and other branches to be transported to Madang. The branch is in need of additional relief items and some funds to mobilize its volunteers.

Targeting

The selection criteria will be finalized after PNGRC completes the assessments. However, after exchanges between the humanitarian community, it has been agreed that the PNGRC, the UN agencies, OXFAM and other agencies will be able to cover the gaps in the needs for the entire population evacuated on the short term. Therefore PNGRC has agreed to cover the needs of 160 households or 640 people based on its capacities. The household size of these islands families is considered small, an average of 4 people per household (HH).

PNGRC will do a recipients list once they get a full assessment and in coordination with the other actors. It is estimated that it will be some time before people can return and they may need to rebuild elsewhere, so it is essential to get a full picture of the social structure of the area e.g. does the population have access to land either on one of the other islands or the mainland. People with particular vulnerabilities will be prioritized in receiving aid (traditional criteria of vulnerability such as elderly, disabled, pregnant women, single-head HH, etc.)

PNGRC Chair is getting involved as a member of the DM sub-committee and one with many years of experience as a volunteer and responding to disasters.

It is in these interventions that PNGRC volunteers will play a key role in, working alongside the Provincial Disaster Committee and other stakeholders to carry out assessment, beneficiaries' selection and response the disaster.

Scenario planning

The most likely scenario is that the PNG government has the capacity to support the influx in population on Blup Blup Island with food and water supplies in the immediate future and its highly probable that the residents from Kadovar will be able to relocate from the Chouten/Schouten Islands group to the PNG mainland provided that the situation does not worsen.

The worst-case scenario is that eruptions commence on Blup Blup Island before evacuees can be relocated to the mainland; it is unlikely that an evacuation could be conducted in a timely manner, increasing the likelihood of casualties. This would have significant humanitarian impact on this small population as access and communications are difficult.

Finally, another scenario in between is that the government efforts to relocate the influx population on the other islands takes more time than expected and that food and water supplies run off. The government is however believed to have resource to maintain this support for a longer period. Potential additional response by PNGRC would be requested and therefore this DREF would potentially need to be reviewed in this particular scenario to address those needs.

Operation Risk Assessment

The distance to reach the affected island is difficult, 24 kilometres by boat, from the mainland (100 KM from the main town, Wewak). This will be factored into the detailed planning and budgeting for the operation, and will include security considerations related to this. Advice from the PNGRC is to utilize local volunteers and staff from the nearest branch with capacity to respond. The PNGRC is in discussion with the Provincial Disaster Committee (PDC) about the utilization of these volunteers for the response by Madang Branch. Volunteers involved in the response will ensure the response coverage to reach out to all affected people and families. PNGRC volunteers will also be equipped with first aid kits, phones with credit and emergency food/water in remote locations. They will be given other required safety and security gear as appropriate.

The volcanic activity in the region is also not well known and difficult to anticipate. More severe volcanic eruption in the temporary relocation island could represent risks to both affected people and PNGRC staff and volunteers.

Finally, it is important to note that due to security risks handling money represents, no cash programming can be considered for this operation. The authorities are not allowing this option and PNGRC cannot put its staff and volunteers at risk.

B. Operational strategy

Overall objective

Support the response with immediate effect through reaching the 640 affected people with awareness raising on possible risks, hygiene promotion and basic household items, jointly coordinated with the NDC/PDC and partners, to save the lives of people in East Sepik Province.

Proposed strategy

This DREF operation is expected to be implemented over three months, to be completed by 10 April 2018. The proposed operational strategy aims at reaching out to the people affected and providing basic needs. The total number of people targeted is 640, which has been calculated based on the number of people in the affected areas as well as the capacity of the National Society to respond, other stakeholders' response (OXFAM, UN) in addition to information provided by the government and other partners. Further targeting will be done during the implementation phase, and this number may change. Main activities include:

- Deployment of trained staff and volunteers from PNGRC to support the response from the target island. This deployment will cover the entire population of targeted island where they are current sheltered.
- Volunteers will assist in identifying affected people and preparing beneficiaries list.
- An assessment of WASH will be made with the possibility of conducting awareness on hygiene and water security. Sanitation and water will also be assessed and increased where necessary. (Partnership with Oxfam)
- Distribution of existing essential relief items³ from PNGRC existing stocks and subsequent replenishment through international procurement.
- A 'lessons learned workshop' for participating staff and volunteers at the end of the DREF operation.
- Given the possibility if ash fall out and tsunami, awareness information on what to do to minimise the effect of these will be conducted over the local radio station. Appropriate messaging will be sought from the NDC and Rabaul Vulcanological Observatory.

Table 1 - Relief items to distribute per HH

Emergency shelter and household items	
Kitchen sets	1
Blankets	2
Sleeping mats	2
Mosquito Nets	2
Tarpaulins	2
Emergency WASH ⁴	
Hygiene kits	1
Jerry Cans 10 L	2

Operational support services

Human resources

PNGRC Madang Branch volunteer team will be deployed for at least one month of the operation. In total, 10 volunteers will participate in the operation and logistic support will be provided by the PNGRC National Headquarters (HQ). Each volunteer will be deployed for 15 days during the response operation, and will be provided with per diem, funds for transportation as well as Red Cross visibility. Those involved in the response will be provided with required safety and security equipment prior to deployment and insurance coverage.

Protection, gender and inclusion

The team leader of the volunteers will be a woman with experience in PGI programmes. The volunteer team is expected to be gender balanced. The Shelter and WASH guidelines of the IFRC Minimum Standard Commitments to Gender and Diversity in Emergency Programming will be followed throughout the activities and specific refreshing sessions for the volunteers included in this plan of action. Volunteers will monitor the evacuated populations to ensure adequate privacy

³ PNGRC will also distribute baby bundles (kit with items for babies) to all families with children below 1 year of age. Those will not be replenished and will be absorbed by PNGRC outside the scope of this DREF

⁴ These are standard IFRC hygiene kits procured from KL in stocks. They also include some menstrual hygiene items for women.

and separation of facilities and adequate participation of men, women, girls and boys in identifying and addressing issues of protection nature (separated children, children being harassed, SGBV).

The Papua New Guinea IFRC country office and IFRC APRO will provide technical support during the implementation of this operation. A Regional Disaster Response Team (RDRT) member with a generalist or relief profile will be deployed for a period of one month to provide surge support to the operation.

Logistics and supply chain

Logistics activities aim to effectively manage the supply chain, including, procurement, customs clearance, fleet, storage and transport to distribution sites in accordance with the operation's requirements and aligned to IFRC's logistics standards, processes and procedures.

PNGRC has sufficient emergency stocks in-country to meet the immediate emergency response needs. NS will be in charge of delivering relief goods to distribution points with existing resources with the support of IFRC CO. Due to limited capacity of local markets, the replenishment of shelter and household items such as tarpaulins, hygiene kits, kitchen set, blankets, mosquito net and jerrycans will be sourced internationally and delivered directly from IFRC Asia Pacific *Operational Logistics, Procurement & Supply Chain Management (OLPSCM) warehouse* in Kuala Lumpur. The sleeping mats will be procured locally. The IFRC AP OLPSCM department will extend its technical logistics support to NS and IFRC CO as needed.

Information technologies (IT)

Ten mobile phone airtimes will be purchased for volunteers working in the remote areas to ensure access to communication for safety and security. All volunteers will have access to means of communication at all times while in the field. This will ensure they are contactable and can contact relevant emergency numbers as well as IFRC and PNGRC staff for support if needed. Cell phone reception has been confirmed in the affected areas where volunteers will be traveling to.

Communications

As PNGRC does not have a communication team, the IFRC AP regional communication manager will support, if required. This support will include carrying out media relations, if required, and producing content that include news articles, social media updates and key messages. This will also include managing communications risks, for example by producing media reactive lines where necessary. Assistance can also be provided on guidance for the production of advocacy and IEC messaging and ensuring communities have the information they need, and volunteers are prepared to answer the questions and concerns of communities.

Security

The National Society's security framework will apply throughout the duration of the operation to their staff and volunteers. The National Society will brief its personnel working in the field on the evolving situation and the relevant evacuation routes and processes to ensure they operate safely. Should personnel under IFRC security responsibility, including PNS and surge support be deployed to the area, the existing IFRC country security plan, including contingency plans for medical emergencies, relocation and critical incident management will apply. In this case, location specific safety and security assessments will be conducted. IFRC's regional security coordinator is closely monitoring the situation and will provide advice as required. Volunteers will be provided with mobile phones in order to ensure they have means of communication at all times throughout the operation. Personal protection equipment will be provided to all involved in the operation.

Planning, monitoring, evaluation, & reporting (PMER)

The programme manager at PNGRC headquarters, with the support of IFRC, will guide and monitor the Plan of Action. Reporting on the emergency plan of action will be carried out according to IFRC minimum standards. Monitoring visits to the affected communities and interviews with beneficiaries, volunteers and others participating in the response will also be conducted to assess progress at regular intervals and guide any required adjustments to the proposed response. At the end of the operation, a lessons-learned workshop will be carried out by PNGRC staff, with volunteers and relevant stakeholders.

Administration and Finance

The IFRC provides the necessary operational support for review, validation of budgets, bank transfers, and technical assistance to National Societies on procedures for justification of expenditures, including the review and validation of invoices. The IFRC finance focal point in PNG will provide support to the operation.

C. Detailed Operational Plan



Shelter

People targeted: 640

Male/Female: N/A (gender disaggregated data will be provided during activities)

Needs analysis: It is anticipated that the displaced population will require temporary shelter assistance due to their evacuation from their home island. Household items will also be distributed to each household.

Population to be assisted: The displaced population of approximately 640 people evacuated from Kadovar Island.

Programme standards/benchmarks: Sphere standards will apply.

P&B Output Code	Shelter Outcome 1: Communities in disaster and crisis affected areas restore and strengthen their safety, well-being and longer-term recovery through shelter and settlement solutions	<i># of people with safe, adequate and durable recovery shelter and settlement assistance</i>															
	Shelter Output 1.1: Short, medium and long-term shelter and settlement assistance is provided to affected households	<i># households provided with emergency shelter and settlement assistance</i>															
	Activities planned Week	1	2	3	4	5	6	7	8	9	10	11	12	13	14	15	16
AP005	Child Protection and Gender and Diversity Minimum Standards briefing for volunteers conducting activities	x	x														
AP005	Identification of caseloads and verification of beneficiaries in different target groups – inclusion factors integrate gender, diversity and disability in the response	x	x														
AP005	Distribution of the shelter and household items to the affected population: 320 tarpaulins, 160 kitchen sets, 320 blankets, 320 sleeping mats, 320 mosquito nets (accompanied by awareness sessions on good use of goods)	x	x	x	x	x	x										



Water, sanitation and hygiene

People targeted: 640

Male / Female: N/A (gender disaggregated data will be provided during activities)

Needs analysis: It is anticipated that the displaced population, living in overcrowded conditions, will require assistance in regard to hygiene – specifically hygiene kits and awareness raising activities to prevent the spread of illness. Although it is currently the wet season, supply of clean and safe drinking water is another anticipated need, especially due to possible contamination of many water sources from ash fall. Government is providing additional drinking water for a period of two weeks to reduce the strain

AP030	Select target groups, key messages, and methods of communicating with beneficiaries (mass media and interpersonal communication).		x	x														
AP030	Develop a hygiene communication plan. Train volunteers to implement activities from communication plan.		x	x														
AP030	Deploy WASH volunteer team from Madang	x	x	x	x													
AP030	Design/print IEC materials		x	x														
AP030	Conduct hygiene promotion activities with evacuees and host communities	x	x	x	x													
AP030	Assess progress and evaluate results.				x	x												



Disaster Risk Reduction

People targeted⁵: 5000 potential reach on Schouten Islands Group

Male/ Female: N/A (gender disaggregated data will be provided during activities)

Needs analysis: Immediate response can be carried out to the affected community immediately as it is reported that all have been evacuated from their island. However, there is need to conduct awareness of health messages and water security in response to ash fall out. There also needs to be awareness with regard to the possibility of tsunami as a result of possible landslides on the Kadovar Island. Any tsunami could affect the other islands in the Schouten Group as well as the mainland coastal areas.

Population to be assisted: The entire Schouten Islands Group including Kadovar.

P&B Output Code	DRR Outcome 1: Communities in high risk areas are prepared for and able to respond to disaster	# people reached with public awareness and education campaigns using harmonized messages to reduce, mitigate and respond to identified risks															
	DRR Output 1.1: Communities take active steps to strengthen their preparedness for timely and effective response to disasters.	# people reached with public awareness and education campaigns using harmonized messages to reduce, mitigate and respond to identified risks															
	Activities planned Week	1	2	3	4	5	6	7	8	9	10	11	12	13	14	15	16
AP001	Hazard awareness campaign on volcanic activity, water security, tsunami conducted over radio	x	x	x													

⁵ Reference to the guidance on counting people targeted guidance

Strategies for Implementation

P&B Output Code	Outcome S2.1: Effective and coordinated international disaster response is ensured	<i># of coordination internal and external coordination meetings attended</i>															
	Output S2.1.1: Effective response preparedness and NS surge capacity mechanism is maintained	<i># of surge capacity roster members deployed</i>															
	Activities planned Week	1	2	3	4	5	6	7	8	9	10	11	12	13	14	15	16
AP046	Initial operational start up support implemented by IFRC for the host national society	x	x														
AP046	Deployment of one generalist RDRT member with generalist profile for a duration of one month			x	x	x	x	x									
P&B Output Code	Output S2.1.4: Supply chain and fleet services meet recognized quality and accountability standard	<i>% of international procurement respecting the IFRC procurement procedures</i>															
	Activities planned Week	1	2	3	4	5	6	7	8	9	10	11	12	13	14	15	16
	AP050	Operational Logistics, Procurement & Supply Chain Management Department is providing constant support to PNGRC for the procurement of relief goods to replenish in this plan of action. (International procurement for emergency shelter and essential household items, jerry cans and hygiene kits to be replenished)	x	x	x	x	x	x	x	x	x	x	x				
P&B Output Code	Output S2.1.6: Coordinating role of the IFRC within the international humanitarian system is enhanced	<i># of coordination meetings with other stakeholders</i>															
	Activities planned Week	1	2	3	4	5	6	7	8	9	10	11	12	13	14	15	16
	AP049	The IFRC is coordinating with other humanitarian actors on the ground on a regular basis.	x	x	x	x	x	x	x	x							
P&B Output Code	Outcome S3.1: The IFRC secretariat, together with National Societies uses their unique position to influence decisions at local, national and international levels that affect the most vulnerable.	<i># of communications materials produced (social media, media articles, interviews, etc.)</i>															
	Output S3.1.1: IFRC and NS are visible, trusted and effective advocates on humanitarian issues	<i># of communications materials produced (social media, media articles, interviews, etc.)</i>															
	Activities planned Week	1	2	3	4	5	6	7	8	9	10	11	12	13	14	15	16
AP053	Communications work support from IFRC APRO office is provided	x	x	x	x	x	x	x	x								

Budget

DREF OPERATION

10/1/2018

MDRPG007 PNG Kadovar Volcano

Budget Group	DREF grant Budget CHF
Shelter - Relief	4,160
Clothing & Textiles	6,656
Water, Sanitation & Hygiene	2,400
Utensils & Tools	5,916
Total RELIEF ITEMS, CONSTRUCTION AND SUPPLIES	19,132
Storage, Warehousing	3,125
Distribution & Monitoring	9,269
Transport & Vehicle Costs	8,750
Logistics Services	3,500
Total LOGISTICS, TRANSPORT AND STORAGE	24,644
Volunteers	8,531
Total PERSONNEL	8,531
Workshops & Training	9,375
Total WORKSHOP & TRAINING	9,375
Travel	10,438
Information & Public Relations	5,000
Office Costs	469
Communications	656
Financial Charges	406
Total GENERAL EXPENDITURES	16,969
Programme and Supplementary Services Recovery	5,112
Total INDIRECT COSTS	5,112
TOTAL BUDGET	83,763

Reference documents

Click here for:

- [DREF Budget](#)
- [Map of affected area](#)

Contact information

For further information related to this operation please contact:

Papua New Guinea Red Cross Society

- Janet Philemon, chair; email: janetphilemon47@gmail.com
- Uvenama Rova, secretary general; email: uvr6057@gmail.com

IFRC Papua New Guinea

- Udaya Regmi, head of country office, email: udaya.regmi@ifrc.org

Asia Pacific regional office, Kuala Lumpur

- Martin Faller, deputy director; email: martin.faller@ifrc.org
- Nelson Castano, head of disaster and crisis prevention, response and recovery (DCPRR), email: nelson.castano@ifrc.org
- Mathieu Léonard, operations coordinator; email: mathieu.leonard@ifrc.org
- Riku Assamaki, regional logistics coordinator; email: riku.assamaki@ifrc.org

For communications enquiries:

- Rosemarie North, communications manager; email: rosemarie.north@ifrc.org

For resource mobilization and pledges:

- Sophia Keri, resource mobilization in emergencies coordinator; email: sophia.keri@ifrc.org

For planning, monitoring, evaluation and reporting (PMER) queries

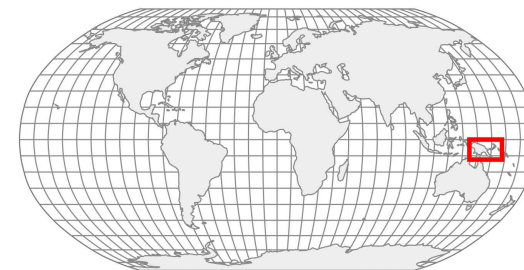
- Clarence Sim, PMER manager, email: clarence.sim@ifrc.org

IFRC Geneva

- Susil Perera, operations coordinator; phone: +41-2-2730-4947; email: susil.perera@ifrc.org
- Ruben Romero, response and recovery lead; email: ruben.romero@ifrc.org

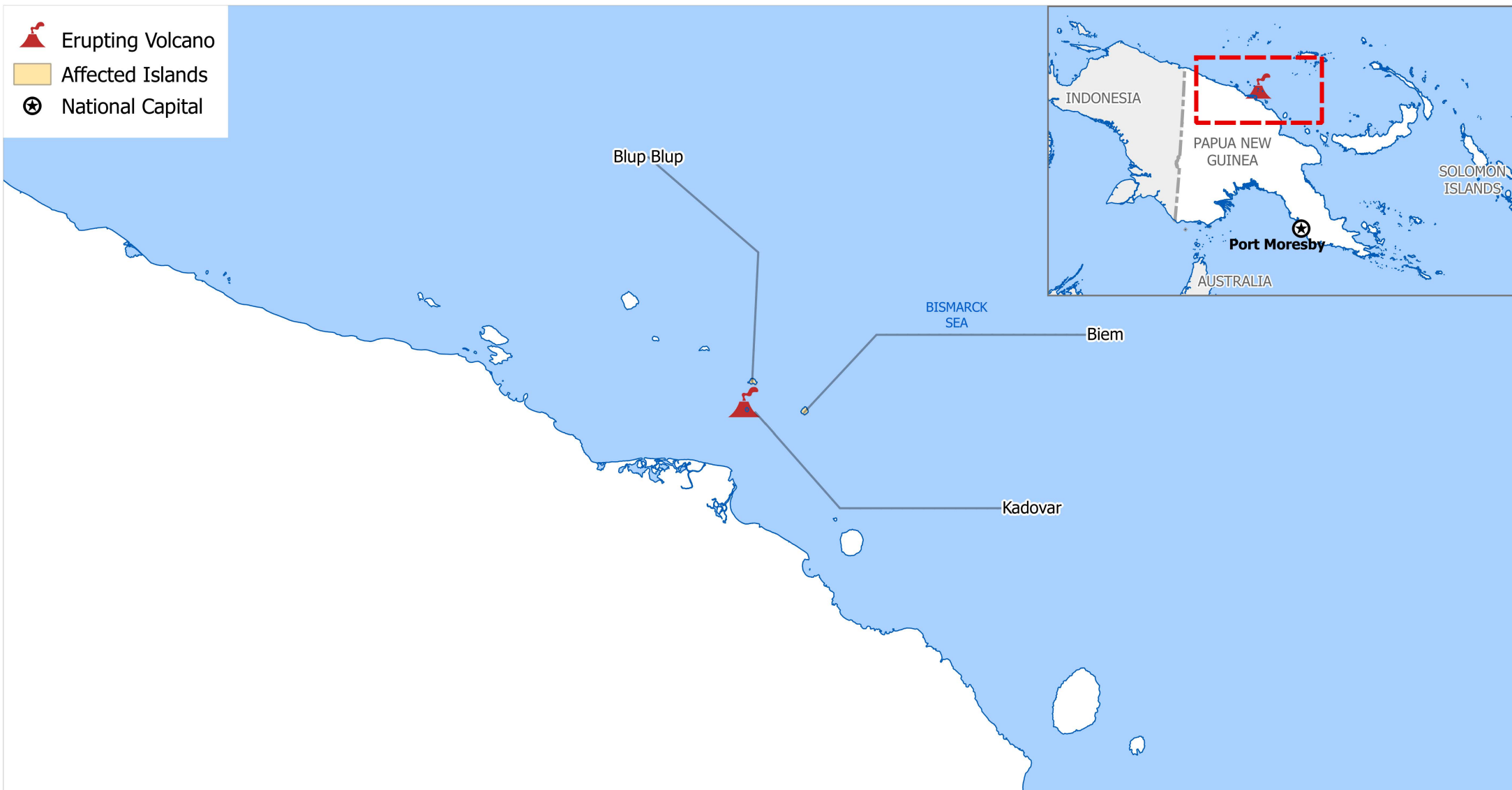


International Federation of Red Cross and Red Crescent Societies
Fédération internationale des Sociétés de la Croix-Rouge et du Croissant-Rouge
Federación Internacional de Sociedades de la Cruz Roja y de la Media Luna Roja
الاتحاد الدولي لجمعيات الصليب الأحمر والهلال الأحمر



Papua New Guinea: Kadovar Volcano

8 January 2018 • VO-2018-000002-PNG



The maps used do not imply the expression of any opinion on the part of the International Federation of the Red Cross and Red Crescent Societies or National Societies concerning the legal status of a territory or of its authorities. Map data sources: OCHA, WFP, ICRC, IFRC

0 400 800 1200 1600 km

