

www.ifrc.org
Saving lives,
changing minds.

Emergency appeal operation update

Philippines: Tropical Storm Tembin

 International Federation
of Red Cross and Red Crescent Societies

Emergency appeal operation n° MDRPH026	Glide n° TC-2017-000182-PHL
Emergency appeal update n° 1: 20 January 2018	Timeframe covered by this update: 19 December 2017 to 7 January 2018
Operation start date: 19 December 2017	Operation end date: 31 December 2018
Overall operation budget: CHF 2,836,944	Operation timeframe: 12 months
N° of people being assisted: 20,000 people	
Host National Society: Philippine Red Cross (PRC) is the nation's largest humanitarian organization and works through 100 chapters covering all administrative districts and major cities in the country. It has at least 1,000 staff at national headquarters and chapter levels, and approximately one million volunteers and supporters, of whom some 500,000 are active volunteers.	
Red Cross Red Crescent Movement partners actively involved in the operation: PRC is working with the International Federation of Red Cross and Red Crescent Societies (IFRC) in this operation. There are 12 Partner National Societies with presence in the Philippines. PRC and IFRC are also coordinating with the International Committee of the Red Cross on this operation.	
Other partner organizations actively involved in the operation: A number of government, non-governmental and UN actors are responding or preparing to respond. These include: <ul style="list-style-type: none"> • Government ministries and agencies including the National Disaster Risk Reduction and Management Council (NDRRMC), Department of Social Welfare and Development (DSWD) and Local Government Units • UN agencies: Including OCHA, UNICEF and WFP International organizations & NGOs: Including ACF, IOM, MSF, Oxfam, Plan and Save the Children.	
Summary of major revisions made to emergency plan of action (EPoA): This Operations Update informs of the adjustment to budget lines to better align with the needs on the ground identified after the needs assessment. The overall budget amount remains the same.	

16 December 2017: Tropical Storm Kai-Tak makes landfall over San Policarpio, Eastern Samar. PRC mounts a response to deliver immediate assistance to affected people.

16-20 December: As PRC continues to deliver immediate assistance to people affected by Tropical Storm Kai-Tak, a new Low-Pressure Area (LPA) forms, gains strength and turns into a tropical depression (TD) and later becomes Tropical Storm Tembin.

21 December: PRC enhances its preparedness measures for approaching Tropical Storm Tembin, and dispatches non-food items for 1,000 families from its Cebu regional warehouse to Mindanao. IFRC allocates 31,764 Swiss francs from its [Disaster Relief Emergency Fund](#) (DREF) to support the National Society's readiness measures.

22-23 December: Tropical Storm Tembin makes landfall in Cateel, Davao Oriental, then tracks west over the provinces of Lanao del Norte, Misamis Oriental, Misamis Occidental and Zamboanga del Norte.

25 December: IFRC launches an [Emergency Appeal](#) for 2,836,944 Swiss francs, including a DREF start-up loan of 313,000 Swiss francs, to support the PRC in meeting the humanitarian needs of 20,000 people.

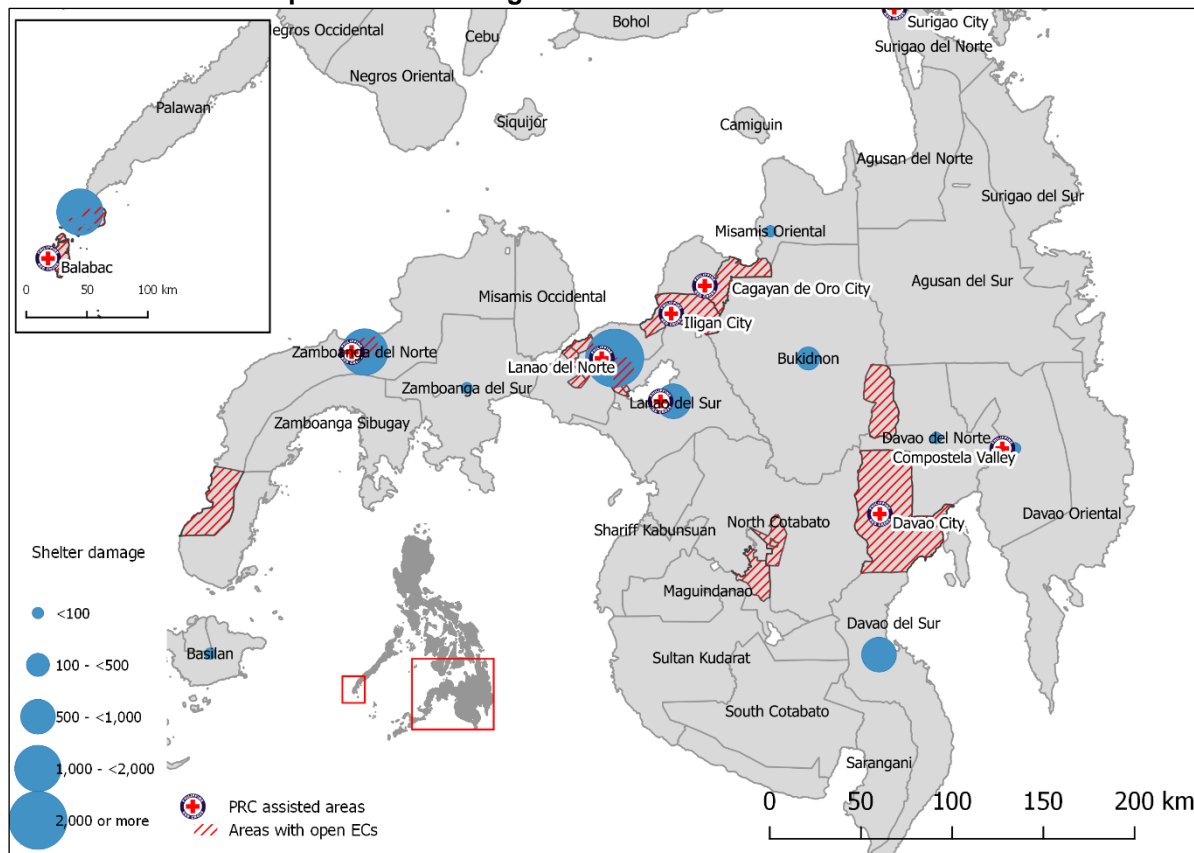
A. Situation analysis

Description of the situation

According to the national meteorological agency, Philippine Atmospheric Geophysical and Astronomical Services Administration (PAGASA), Tropical Storm Tembin made landfall with maximum winds of 90 km/h and gusts of up to 125 km/h. The tropical storm then continued west across Mindanao, tracking over the provinces of Misamis Oriental, Misamis

Occidental and Zamboanga del Norte. It weakened before re-intensifying on 23 December 2017, prior to making a second landfall in Balabac, Palawan. The storm brought heavy rainfall that caused widespread flooding as the major rivers breached their banks. The heavy rain also caused flash floods and landslides in high lands across northern Mindanao and southern Palawan. Northern Mindanao is particularly prone to flash floods and landslides.

Map 1: shelter damage and status of evacuation centres



As responders reach the most affected areas, details of the damage that Tropical Storm Tembin wrought are emerging. According to National Disaster Risk Reduction and Management Council (NDRRMC) report, 160 people are dead and 163 are still missing. The number of fatalities will likely increase as the public authorities verify the information being received from the affected provinces. In addition to causing the loss of human lives and internal displacement, Tembin substantially impacted shelter, livelihoods, WASH and caused damage to critical infrastructure including roads, bridges and power transmission lines. It is reported that 6 roads and 6 bridges are still not passable in Regions X and CARAGA, hampering the relief effort and the communities' access to basic services. Water infrastructure has been significantly damaged in some parts leading to reduced access to drinking water.



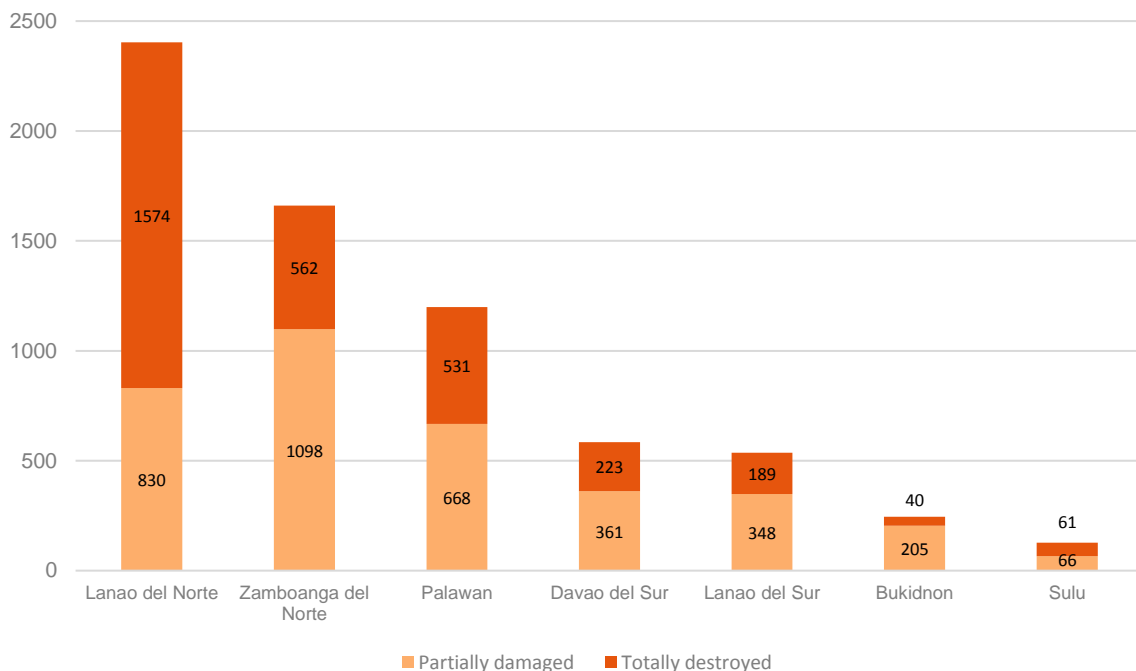
In Salvador, Lanao del Norte, more than 550 houses were damaged by Tembin, most of them due to flash floods and landslides – which affected households described as resembling a 'land tsunami'. **Photo: Patrick Mongaya/IFRC**

According to the NDRRMC, 794,663 people or more than 168,000 households were affected by the storm. DSWD meanwhile reports that at least 447,000 people (98,000 households) were displaced, of whom 310,875 were served inside 752 evacuation centres. As of 6 January 2018, 75,880 people remain inside 53 centres. Furthermore, conflict-affected communities, IDPs and returnees to Marawi City, Lanao del Sur were also affected and remain vulnerable.

Most recent reports indicate that Tembin damaged 6,850 houses in 12 provinces, of which more than half were totally destroyed. Housing damage was mainly attributed to flash floods, landslides, overflowing rivers and wind damage. Spillways, bridges and roads were also damaged – amounting to more than 240 million Philippine pesos (CHF 4.8million). Moreover, NDRRMC reports more than

PHP 1.4 billion (more than CHF 28 million) in damage to agriculture, of which PHP 894 million (CHF 18 million) worth of rice was lost.

Most affected provinces
(based on shelter damage)
as per NDRRMC report of 7 Jan 2018



Summary of current response

Overview of Host National Society



In Padianan, Salvador, Lanao del Norte, PRC provided psychosocial support to children through play therapy to help them cope with the devastation brought by Tembin. **Photo: Patrick Mongaya/IFRC**

The PRC monitored the weather systems since they were spotted as low-pressure areas within the PAR through the Operations Centre which functions 24/7. As part of its standard operating procedures, all chapters in the forecasted affected areas were alerted to prepare for preemptive evacuations. The National Headquarters (NHQ) of PRC and chapters closely coordinated with the national, regional, provincial, municipal, and city DRRMOs and other counterparts. The PRC also participated in the NDRRMC Pre-Disaster Risk Analysis (PDRA) meetings and preparedness planning meetings. The PRC local chapters, meanwhile, also supported early warning and pre-emptive evacuation. The PRC dispatched from Cebu regional warehouse to Mindanao a standard set of non-food items for 1,000 families before Tembin made landfall.

Upon landfall, the PRC supported first aid, transport, welfare and provision of hot meals, supporting the respective local government units' response. The PRC also carried out search and rescue, and other response activities, as well as deployed rapid assessment teams. The PRC deployed response teams such as RC143 and RCAT143 for local response and NDRTs including the Emergency Response Unit for Water Search and Rescue teams. The PRC also mobilized the WASH hubs based in Mindanao with capacity for water treatment, storage and transport.

Summary of the PRC assistance so far:

Table 1. Breakdown of relief activities carried out by PRC

Activity	Reached	Locations
Rescued/assisted for evacuation	610 individuals	Cagayan de Oro, Davao City and Zamboanga Del Norte
Welfare desks	14 established	
Psychological first aid	2,545 individuals	Cagayan de Oro City, Surigao City , Iligan City, Zamboanga City, Bohol, Cebu, Davao City, Compostela Valley, Lanao del Norte, Davao del Norte and Zamboanga del Norte
Taken blood pressure was taken and/or provided with first aid	781 individuals	
Served with hot meals or bread	8,468 individuals	Bohol, Bukidnon, Cebu, Compostela Valley, Davao City, Iligan City, Cagayan de Oro City, Surigao City and Zamboanga del Norte
Distributed bottled water	488 individuals	Bohol, Lanao del Norte, Surigao del Norte and Zamboanga del Norte
Water distributed - 2 water tankers deployed to provide potable water - 2 units of water bladder (5,000 litres) installed	408,000 liters	Cagayan de Oro and Lanao del Sur
Relief items distributed (<i>breakdown below</i>)	1,734 families	
Distributed non-food items (hygiene kit, jerry can and sleeping kits), unconditional cash grant and food packages	410 families	Lanao del Norte
Distributed tarpaulins	293 families	Lanao del Norte
Distributed jerry can	116 families	Cagayan de Oro, Misamis Oriental
Distributed hygiene kit	283 families	Zamboanga del Norte
Distributed food packages	1,135 families	Davao City, Lanao del Norte and Lanao del Sur

Overview of Red Cross Red Crescent Movement in country

The PRC works with the IFRC and the International Committee of the Red Cross (ICRC) and 12 Partner National Societies in the country, namely: American Red Cross, Australian Red Cross, British Red Cross, Canadian Red Cross, Finnish Red Cross, German Red Cross, Japanese Red Cross Society, The Netherlands Red Cross, Norwegian Red Cross, Spanish Red Cross, Swiss Red Cross and Qatar Red Crescent Society. The PRC ensures that all Movement partners are fully informed about the situation and plans.

The ICRC is active in the Philippines in line with its mandate to protect and assist people affected by armed conflict and other situations of violence. It cooperates closely with the PRC on various protection, assistance and prevention activities in the Mindanao region. Marawi City and surrounding areas affected by the recent conflict there have also been affected by the TS Tembin.

The IFRC has a country office in the Philippines, which is supporting the PRC in the planning of this operation and in coordination with stakeholders. Communications with the ICRC on the operation are held at the country level. The IFRC is closely monitoring the situation and has mobilized staff to provide technical support to the PRC as well as coordination with other agencies via the Humanitarian Country Team (HCT).

Movement Coordination

The IFRC Country Office is supporting the PRC in disseminating updates to Movement partners with an in-country presence and coordinating with the Asia Pacific Regional Office (APRO) in Kuala Lumpur in accordance with the IFRC Secretariat's Operational Response Framework. The Country Office is also in close contact with the ICRC on any security-related considerations.

The PRC convened a coordination meeting on 24 December 2017, in which all Movement components were represented. In addition to coordinating with Movement partners, the PRC has assigned dedicated personnel to represent the National Society in NDRRMC meetings. This ensures synergy among different actors.

Overview of non-RCRC actors in country

Coordinating with the authorities

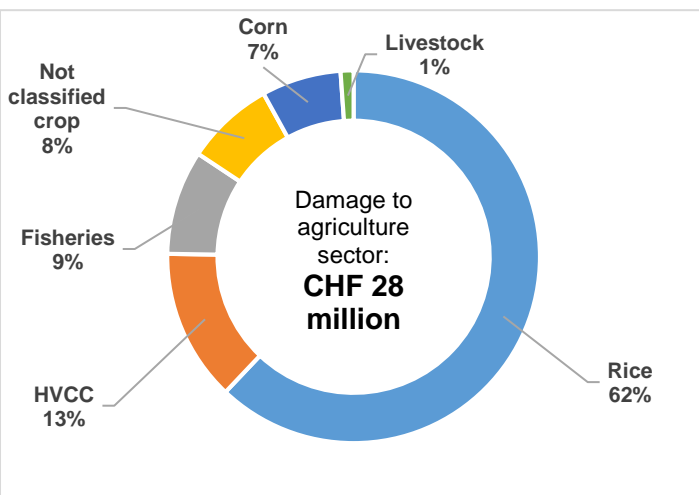
As auxiliary to the public authorities, the PRC maintains a strong relationship with government bodies through participation or collaboration with (i) the NDRRMC; (ii) the provincial, municipal and barangay (village) disaster risk reduction and management councils; and (iii) the local government units defined in the Disaster Risk Reduction and Management Act from 2010.

The PRC participates in NDRRMC meetings and coordinates with the Department of Social Welfare and Development (DSWD), and Department of Health, and the NDRRMC at regional, provincial, municipal and barangay levels. The PRC has assigned dedicated personnel who continue to represent the National Society in NDRRMC meetings. PRC is also participating in the NDRRMC Pre-Disaster Risk Analysis (PDRA) meetings and preparedness planning meetings.

Inter-agency coordination

At the country level, PRC and IFRC consistently participate in meetings of the Humanitarian Country Team (HCT) held both during disasters and non-emergency times. The PRC and the IFRC are involved in relevant government-led cluster information sharing, planning, and analysis at all levels, while IFRC supports PRC coordination efforts through representation in other relevant clusters as required.

Needs analysis and scenario planning



Needs assessments

Assessments are still on going and the needs continue to evolve as more data on Tembin's impact are collected and analysed. The PRC Chapters, bolstered by RCATs and NDRT's, record that the hardest hit areas have suffered damage mainly because of floods due to river banks overflowing and flash floods and landslides in the mountainous areas. The Chapters requested support for search and rescue and assistance for families in the evacuation centres. They also requested support for food, non-food items, emergency shelter materials, and water and hygiene items.

The PRC NHQ immediately mobilised dedicated assessment teams to augment the chapter assessments in Lanao del Norte, Lanao del Sur, Zamboanga del Norte and Palawan. The Rapid Damage and Needs

Assessment (RDANA) tool was used for data collection. Detailed assessments are currently being conducted and the results of which will serve as the basis for further adjustments to the strategy and budget in the coming weeks. As the situation continues to evolve, the overall impact of the tropical storms will only be determined upon completion of all assessments.

Beneficiary selection

The PRC ensures that interventions are aligned with its own as well as the IFRC minimum standard commitments to gender and diversity in emergency programming, for example by targeting women-headed households, pregnant or lactating women, men and boys made vulnerable by the disaster, families who did not receive any or sufficient assistance from the government or other organizations, those belonging to the socially vulnerable households, and those who lack relevant resources to cope with basic humanitarian needs on their own. These groups are considered according to the level of impact.

Once beneficiaries are identified, each will be given a PRC beneficiary card with their and household members' names. The card will form the basis for recognition of bearers as beneficiaries of the PRC and during implementation, PRC volunteers will countercheck if the names on the card are listed in distribution sheets. Upon receipt of any item or assistance, beneficiaries will sign award sheets or participating lists. With these records, case of double-assistance or double-counting will be eliminated.

B. Operational strategy and plan

Over-all Objective

This operation aims to assist 20,000 people (4,000 households) affected by Tembin with appropriate immediate and medium-term assistance in a timely, effective and efficient manner, as well as accompany them to recover from the impact of the typhoon and increase their resilience to future shocks.

Proposed strategy

The Emergency Appeal will support components of the PRC relief and recovery plans of action in the following sectors:

1. **Immediate household needs** assistance, including distribution of essential household **non-food items** and **unconditional cash grants**.
2. **Livelihoods** support for families to restart their **income earning** activities and **small enterprise** revival, through cash transfers.
3. **Shelter and settlements** assistance to support access to safer living conditions during the initial states of the emergency through the provision of tarpaulins, mosquito nets, blankets, followed by cash transfer and shelter solutions to prioritize self-recovery, and always accompanied by technical support and awareness sessions on build back safer techniques.
4. **Health** interventions focusing on **psychosocial support, community-based disease prevention, epidemic control, and health promotion**.
5. **Water, sanitation and hygiene promotion** interventions focusing on improving access to safe water, access to improved sanitation, and the sustainable reduction of risk to diseases (water-borne, vector-borne and water-related) in affected communities.
6. **School and community preparedness and disaster risk reduction**.

As with all PRC-led operations, this Appeal supports the overall PRC Plan of Action and follows key strategies:

1. **A Movement-wide approach:** The PRC is responsible for the overall coordination and implementation of the disaster response operation, supported by components of the Movement.
2. **Cash transfers:** Cash transfers will contribute towards the empowerment of the affected population by giving them the flexibility to prioritize their own recover needs.
3. Establishment of mechanisms to facilitate two-way **communication** with, and ensure **transparency** and **accountability** to, disaster-affected people
4. **Integrated programming and resilience-building:** Early recovery interventions will aim to address a broad range of sectors, to provide for the needs of communities and contribute to their improved resilience.
5. **Factoring lessons from previous operations:** The PRC will draw on lessons from previous responses in Mindanao and the current response in Marawi City.
6. The Emergency Appeal will also support **National Society Capacity Enhancement** at the chapter and national levels.



A family inside an evacuation centre in Dalama, Lanao del Norte receives non-food items – sleeping kits, hygiene kits and jerry cans – from PRC. **Photo: Patrick Mongaya/IFRC**

Cross cutting issues

Cash Transfer Based Programming

Cash transfers were utilized as part of the emergency relief, shelter repairs and livelihood early recovery activities. Provision of cash allows beneficiaries to prioritize the most important materials for repairs and source livelihood inputs from the most suitable suppliers.

Community engagement and accountability

Communities were involved in all stages of the programme, i.e. from design, to implementation, monitoring and evaluation. In the design stage, members of target communities were consulted on their needs and the type of appropriate assistance they wanted.

During the relief phase, PRC established welfare desks in hospitals, evacuation centres and points of distribution. Staff and volunteers at the welfare desks provided services and information for: restoring family links, tracing, psychosocial support, referrals, and support for communicating with family members.

The formation of barangay recovery committees (BaReCom) is an important tool for community engagement as they are the representatives of their own community. Beneficiaries directly provide feedback to BaReCom members, which is essential for the programme implementation and resolving challenges at their level. Each committee comprised of five to ten community members who contribute directly to the local recovery planning, beneficiary selection process, and prioritization of activities as well as the implementation and monitoring of the interventions. These committees will also act as advisory groups for all programmes including shelter, livelihoods, water and sanitation, and health, as well as in the selection of beneficiary households and communities. They provide invaluable insights into individual community recovery needs for each sector and assist in identifying beneficiaries who will be validated through collective

community processes. As such, the barangay recovery committees help ensure an integrated approach of multiple programme sectors.

A post-distribution survey will also be conducted after the emergency phase to gauge the efficiency of the distribution and the quality of the items distributed. A post-programme survey for the shelter repair assistance and household livelihood assistance will also be conducted to assess the quality, timeliness, efficiency and accessibility of the assistance provided.

As part of the Operations Plan 2017 for the Philippines, IFRC supports PRC with a national coordinator for community engagement and accountability who will be supporting the operation

Gender and Diversity

PRC ensures that its interventions are aligned with its own as well as the [IFRC Minimum standard commitments to gender and diversity](#) in emergency programming. The PRC operation will provide support to affected which include children, pregnant or lactating women, men and boys. Most, if not all, belong to the socially vulnerable households, and lack relevant resources to cope with basic humanitarian needs on their own. These groups were considered according to the level of impact.

The following considerations will also be applied during the intervention:

- protecting children in all aspects of the recovery by ensuring that they were not involved in the construction or repair works for the shelter;
- for inclusion, community members helped households with members with disabilities or elderly members in the construction works – offering labour assistance for free – an evidence of social cohesion;
- for diversity, PRC encouraged the participation of community members from different sex orientation and social status. The diversity in the composition of the BaReCom, was evident where some members of the lesbian, gay, bisexual, trans, and/or intersex (LGBTI) community were part of the committee.

Operational support services

Human resources

All relief activities will be implemented by the PRC Chapters utilizing existing staff and Red Cross 143 volunteers, Red Cross Action Teams (RCAT134) and NDRT from other Chapters. A regional disaster response team (RDRT) member will be deployed to support specific aspects of the operation as per PRC's request. New staff will be recruited for the early recovery components when required. The country office will also support the National Society in providing HR services to the new and existing staff involved in the operation.

Logistics and supply chain

Logistics activities aim to effectively manage the supply chain, including procurement, customs clearance, fleet, storage and transport to distribution sites in accordance with the operation's requirements and aligned to IFRC's logistics standards, processes and procedures. Logistics support for this operation is being provided through the strong capacity of the PRC logistics built over the last years and an experienced IFRC in-country logistics team, supported by a logistics delegate working in the IFRC country office. Any local procurement that might be required for this operation will be done by the IFRC Country Office's logistics team in close cooperation with the PRC.

PRC will initiate distribution of all relief items from existing preparedness stocks with the support of IFRC CO team to meet the immediate needs. The process of replenishing relief items released from preparedness stocks will be detailed in subsequent updates. All in-country transportation of relief items will be carried out utilizing the PRC existing fleet as well as hiring of additional trucks. The IFRC in-country logistics team and the IFRC Asia Pacific Regional Operational Logistics, Procurement and Supply Chain Management (OLPSCM) Department in Kuala Lumpur will extend technical support to PRC and IFRC country office as needed.

Information technologies (IT)

The Emergency Appeal will cover costs of mobile phone credit and internet cards for the three chapters involved. PRC will ensure that staff and volunteers involved in the operation can be reachable via mobile phones. Where necessary, satellite phones will be made available. The chapters will have sufficient computer software and hardware capacity and support for the operational requirements.

Security

Parts of Mindanao are security-sensitive due to the presence of and operations of non-state armed groups. In the province of Lanao del Norte, access is not allowed in the municipality of Munai. Furthermore, travel are also security concerns when travelling across municipalities. Overall, the area is at the orange security level. Given the context, coordination will be observed with the ICRC and other Movement partners, as per existing security framework and draft Movement coordination agreement. Regular information-sharing will be maintained and specific security protocols for each security level, especially when members are required to be present in security-sensitive areas, will be observed.

Communications

The PRC communications team is ensuring that Red Cross response efforts are effectively communicated amongst its key public audiences. PRC staff and volunteers across the country are actively contributing to institutional communications through their own social media networks. A composite team of PRC and IFRC communications officers will work together to generate high quality photos, video clips, and news stories for use across IFRC and PRC multimedia platforms. A mobile messaging group (via Facebook Messenger) will be set up between PRC's operations centre, DMS, deployed assessment teams, PRC and IFRC communications focal persons to share real-time information and data from responders on the ground and vice versa.

Planning, monitoring, evaluation, & reporting (PMER)

Reporting on the operation will be carried out in accordance with the IFRC Emergency Appeal minimum reporting standards. Regular updates will be issued during the operation's timeframe with a final report issued within three months after the end of the operation. The operation team will have the technical PMER capacity and additional technical support is provided through IFRC APRO PMER team. The operation monitoring teams will make field visits on a needs basis. This will help identify and, where possible and necessary, resolve any issues. Necessary tools and templates for regular data collection and reporting will be adopted from existing PMER resources.

Administration and Finance

The IFRC provides the necessary operational support for review, validation of budgets, bank transfers, and technical assistance to National Societies on procedures for justification of expenditures, including the review and validation of invoices. PRC is accustomed to these financial procedures.

C. Detailed Operational Plan

Health

Needs analysis: Affected people will need first aid services, stabilization support and referral for various injuries and psychological trauma. There is a risk of spread of vector-borne diseases, especially dengue in the affected areas. The areas are also vulnerable to leptospirosis, (outbreak occurred previously and the same trend may follow if unmanaged and not monitored). Hospitals and other health care services have been impacted, since their vital infrastructure and service delivery mechanisms have been affected in relation to power and water supply, damage to vital equipment, disruption of internal and external communication systems, blocked transport systems and flooded ambulance stations etc., which disrupted normal activities. Many health facilities are overwhelmed with an increased influx of patients, which is expected to increase due to the outbreak of any kind (water, vector or rodent borne). Though the health facilities are overwhelmed, the doctors and nurses can still attend to the patients with immediate needs, given, they reach the health facilities.

The tropical storm had a strong effect on people's mental health. Mental distress is the most common issue – this is usually temporary, with most people overcoming it by themselves in a reasonable time. However, people may need (especially children) post-disaster psychological assistance in general by trained PSS and PFA volunteers. The Department of Health and WHO jointly activated the Surveillance in Post Extreme Emergencies and Disasters (SPEED) in the affected areas, however, PRC volunteers led Community Based Surveillance (CBS) and reporting may help identify a small number of cases and prevent outbreaks, at the local level.

Population to be assisted: The awareness generation will reach out to all people across the targeted communities, amounting to more than 20,000 people with messages on epidemic control, reporting, referral and other community based health topics relevant to these communities. However, the direct beneficiaries of the health services (first aid (FA), referral and PSS) is estimated at 500 people.

Health			
Outcome 1: The immediate and medium-term risks to the health of affected population are reduced	Outputs		% of achievement
	Output 1.1: 500 people are provided with rapid medical management of injuries		40%
Activities	Is implementation on time?		% progress (estimate)
	Yes (x)	No (x)	
1.1.1 First aid trained volunteers are mobilised and registered	X		100%
1.1.2 Provide first aid kits to the volunteers	X		In Progress
1.1.3 FA trained volunteers assist people in need of FA services in the affected areas	X		100%

1.1.4 One time support to the affected chapters with FA training materials	X		Not Started Yet
Progress towards outcomes			
As of 4 January, the PRC has provided first aid to 781 people and rescued/assisted 610 people for evacuation in Cagayan de Oro City, Davao City and Zamboanga del Norte.			
Outcome 1: The immediate and medium-term risks to the health of affected population are reduced	Outputs		% of achievement
	Output 1.2: 20,000 people are reached with community-based disease prevention and health promotion measures		20%
Activities	Is implementation on time?		% progress (estimate)
	Yes (x)	No (x)	
1.2.1 Volunteers refer and accompany sick and wounded people to the nearest health facility	X		30%
1.2.2 Volunteers mobilised to undertake prevention and management of dengue, measles and leptospirosis (as per ECV module)	X		30%
1.2.3 Volunteers undertake health education sessions in the community on dengue, measles and leptospirosis (as per ECV module)	X		30%
1.2.4 Volunteers actively monitor and report the pre-outbreak situation through SPEED and CBS	X		30%
1.2.5 Training of trainers (TOT) at the chapter level on identified health needs of the communities as per CBHFA module	X		Not Started Yet
1.2.6 Training of volunteers on identified health needs of the communities as per CBHFA module	X		Not Started Yet
1.2.7 Implementation of community-based disease prevention at the communities as per CBHFA module	X		Not Started Yet
Progress towards outcomes			
The PRC Health Services released advisories to all affected chapters in Mindanao to activate Surveillance Post Extreme Emergencies and Disasters (SPEED) among health volunteers. The volunteers were also activated to conduct activities/campaigns for any possible occurrence of water-related diseases caused by flooding, as well as increase in cases of acute respiratory illnesses.			
Outcome 1: The immediate and medium-term risks to the health of affected population are reduced	Outputs		% of achievement
	Output 1.3: Target population is reached with mainstream and cross-cutting psychosocial support		65%
Activities	Is implementation on time?		% progress (estimate)
	Yes (x)	No (x)	
1.3.1 Set up welfare desks in evacuation centres	X		100%
1.3.2 Support orientation and training of staff and volunteers on providing psychosocial support	X		30%
1.3.3 Ensure appropriate referral pathways for additional services to specialized providers	X		80%
1.3.4 Provide psychosocial support to affected people in communities, including distribution of IEC materials	X		30%
1.3.5 Organize peer support sessions, 'rest and recreation' day and team-building activities for staff and volunteers involved in the response.	X		In Progress
Progress towards outcomes			
During the emergency phase, the PRC established 14 welfare desks inside evacuation centres. As of 4 January, the PRC has provided psychosocial support to 2,545 people in 5 cities and 6 provinces. The PRC also supported 82 people in restoring family links or tracing.			

Water, sanitation and hygiene promotion

Needs analysis: People's immediate need is safe and clean drinking water. In areas where the public water supply system is damaged or destroyed, PRC will continue to supply water using its assets and volunteers. In addition, PRC will work with households on household water treatment (also making provision for Hyposol). There is a need to provide hygiene kits and jerry cans alongside other non-food relief items. Households provided with hygiene kits will also be reached by hygiene promotion activities to improve hygiene behaviour and bridge knowledge and practice of safe water and food handling as well as hygiene practices such as hand-washing to mitigate the risk of preventable diseases.

There are needs of hygiene promotion activities and disease prevention messaging along with community clean-up campaign, which will ensure lower risk of outbreak (especially for water and vector borne diseases). The community volunteers along with the local people will undertake these activities after the community awareness generation is completed and provision are made for cleaning and safety equipment for these activities. The communities will be reached with messages and services to ensure long term and sustainable WASH impact is there. At least 1,000 households will be reached with knowledge and services through using PHAST approach and five schools will be reached using the CHAST module. This will ensure long term, sustainable sanitation and hygienic practices, while making provisions for services like safe water and sanitation facilities at the community level with participation and support from community people.

Population to be assisted: 1,000 households are targeted with jerry cans, mosquito nets and hygiene kits in the affected provinces. A total of 20,000 people will be reached with hygiene promotion activities and access to clean and safe potable drinking water. 1,000 households will be reached through PHAST and five schools will be covered under CHAST.

Water, sanitation, and hygiene promotion			
Outcome 2: The risk of water and sanitation related diseases is reduced	Outputs		% of achievement
	Output 2.1: 20,000 people have immediate access to safe water		20%
Activities	Is implementation on time?		% progress (estimate)
	Yes (x)	No (x)	
2.1.1 Transportation and installation of water storage, distribution and treatment facilities in Mindanao	X		30%
2.1.2 Establish storage points (community-based water distribution points) and distribution mechanism to affected households	X		30%
2.1.3 Select households and train them on household water treatment	X		Not Started Yet
2.1.4 Distribute jerry cans to selected households	X		50%
2.1.5 Establish/repair community water facilities and distribution centres to support PHAST	X		Not Started Yet
Progress towards outcomes			
PRC has distributed 408,000 litres of water in Cagayan de Oro and Lanao del Sur. Furthermore, PRC deployed a water tanker and two 5,000 litre water bladders in Cagayan de Oro City and another water tanker in Madalum, Lanao del Sur.			
Outcome 2: The risk of water and sanitation related diseases is reduced	Outputs		% of achievement
	Output 2.2: 20,000 people have access to improved sanitation		0
Activities	Is implementation on time?		% progress (estimate)
	Yes (x)	No (x)	
2.2.1. Mobilize and register trained sanitation volunteers	X		Not Started Yet
2.2.2 Volunteers promote positive sanitation behaviour in the communities through orientation and clean up campaigns	X		Not Started Yet
2.2.3 Schools are supported with construction or repair of water and sanitation facilities, separately for boys and girls	X		Not Started Yet
2.2.4 Evacuation centres are provided with separate shower cabins and latrines for men and women with proper safety features	X		Not Started Yet
2.2.5 Households are supported with latrine repair to support PHAST (linked to shelter assistance)	X		Not Started Yet

Progress towards outcomes			
No update as of reporting period.			
Outcome 2: The risk of water and sanitation related diseases is reduced	Outputs		% of achievement
	Output 2.3: 20,000 people are sensitized and equipped with knowledge on good hygiene practices		5%
Activities	Is implementation on time?		% progress (estimate)
	Yes (x)	No (x)	
2.3.1 Provide hygiene kits to selected households	X		50%
2.3.2 Provide dignity kits to selected households	X		Not Started Yet
2.3.3 Mobilise volunteers and community people for community cleanliness drive and provide adequate equipment to do so	X		Not Started Yet
2.3.4 Train volunteers on PHAST	X		Not Started Yet
2.3.5 Implement PHAST in the communities	X		Not Started Yet
2.3.6 Train teachers and peer educators in the schools on CHAST	X		Not Started Yet
2.3.7 Support CHAST operation sessions in schools	X		Not Started Yet
Progress towards outcomes			
The PRC has provided hygiene kits to 691 households. A standard hygiene kit contains 12 pieces of bath soap, 5 pieces of laundry soap, 40 pieces of sanitary pads, 5 pieces of bath towel, 6 rolls of toilet paper, 2 tubes of toothpaste, 5 pieces of toothbrush and 4 pieces of disposable razor.			

Shelter (including household non-food items)

Needs analysis: 3,560 houses were totally damaged and 3,118 were partially damaged due to flooding, flash floods or landslides, leaving the affected families staying in open areas or evacuation centres. There is a need for emergency shelter solutions. Displaced households will require essential items to meet immediate needs in a dignified manner. There is also a need to provide longer-term shelter solutions for the affected families with damaged and destroyed households.

Population to be assisted: To address immediate shelter needs, PRC will provide 1,000 households with non-food items (including blankets and sleeping mats, water storage containers, mosquito nets and hygiene kits) and emergency shelter materials (tarpaulins) - provision of NFIs and UCGs (see livelihood section) are interchangeable depending on market assessment and accessibility.

For early recovery, 900 households, will be supported with shelter repair assistance comprising corrugated iron sheets, conditional cash grant worth PHP 15,000 (CHF 304) and wages for workers to support them in undertaking repairs. In addition, 100 households will be provided with transitional shelters. The targets for the shelter repair and transitional shelter are subject to change based on detailed assessment analysis.

All hardware interventions will be accompanied with software. During the relief distribution of tarpaulins will be done alongside provision of IEC materials on the use of tarpaulins while in the recovery phase awareness sessions – combined with technical support on build back better and safer principles – will be organized alongside mobilization of carpenters and masons to ensure that households take in consideration these principles while repairing/retrofitting their dwellings. Shelter repairs will also be conducted following build back safer principles, ensuring improved living conditions and improved typhoon resiliency.

Shelter (including household non-food items)			
Outcome 3: Immediate household item and shelter needs of target population are met	Outputs		% of achievement
	Output 3.1 1,000 families are provided with essential household items or the equivalent cash amount		20%
Activities	Is implementation on time?		% progress (estimate)
	Yes (x)	No (x)	
3.1.1 Dispatch essential household items from warehouses to affected areas	X		100%
3.1.2 Select families per set criteria and prepare lists of families to be assisted	X		20%

3.1.3. Distribute essential household items to families		X		20%
Progress towards outcomes				
As of 4 January, the PRC has provided sleeping kits (blankets, mats and mosquito nets) to 408 households; hygiene kits to 691 households and jerry cans to 524 households.				
Outcome 3: Immediate household item and shelter needs of target population are met	Outputs			% of achievement
	Output 3.2 1,000 families are provided with emergency shelter items			15%
Activities	Is implementation on time?		% progress (estimate)	
	Yes (x)	No (x)		
3.2.1 Dispatch emergency shelter items from the warehouses to affected areas		X		100%
3.2.2 Select families per set criteria and prepare lists of people to be assisted		X		15%
3.2.3 Distribute emergency shelter items to families		X		15%
Progress towards outcomes				
The PRC has provided 293 households with emergency shelter materials – 2 sheets of tarpaulins.				
Outcome 3: Immediate household item and shelter needs of target population are met	Outputs			% of achievement
	Output 3.3 1,000 families are provided with improved shelter assistance			0
Activities	Is implementation on time?		% progress (estimate)	
	Yes (x)	No (x)		
3.3.1 Select families per set criteria and prepare lists of people to be assisted		X		Not Started Yet
3.3.2 Procure and distribute shelter repair components – CGI sheets and conditional cash grants		X		Not Started Yet
3.3.3 Procure and distribute transitional shelter materials		X		Not Started Yet
3.3.4 Mobilize and train carpenters to support selected families in repairing using building back better and safer principles		X		Not Started Yet
Progress towards outcomes				
No update as of reporting period.				
Outcome 3: Immediate household item and shelter needs of target population are met	Outputs			% of achievement
	Output 3.4 1,000 families are reached with awareness on safer shelter			5%
Activities	Is implementation on time?		% progress (estimate)	
	Yes (x)	No (x)		
3.4.1 Reproduce IEC materials on the best use of tarpaulins and distribute them to the families		X		Not Started Yet
3.4.2 Mobilize members of shelter technical team for awareness sessions on safer building principles		X		Not Started Yet
3.4.3 Organize awareness sessions on safer building principles for target households		X		Not Started Yet
Progress towards outcomes				
No update as of reporting period.				

Livelihood (including cash assistance)

Needs analysis: Displaced household's due to pre-emptive evacuation require hot meals at the evacuation centres and or in some cases households will need dry food packs when located in their place of origin. To ensure that the affected population are able to prioritize based on their actual needs, PRC will provide unconditional cash grants worth PHP 3,000 (CHF 62.5)¹ to households to cover their immediate basic needs. The emergency assessment teams will assess the availability and accessibility of markets as part of the multi-sector assessments. Thousands of poor families which rely on farming have been hard hit with losses in income after rice, corn, and other high-value crop were damaged by floods and landslides. Families and communities need support to recover livelihoods and be in the position to fend for themselves with dignity.

Population to be assisted: 4,000 households will receive the unconditional cash grants - provision of UCGs and NFIs (see Shelter section) are interchangeable depending on market assessment and accessibility. The methodologies for the cash distribution will be initially done through cash in envelopes, but will move to financial service providers as access improves. A total of 1,000 families will be supported with a conditional cash grant worth PHP 10,000 (CHF 203). The grant aims to provide the most vulnerable affected households cash to enable them to replace

Livelihood (including cash assistance)			
Outcome 4: Immediate self-prioritized needs of the target population are met	Outputs		% of achievement
	Output 4.1: 4,000 families are provided with multi-purpose cash grant		15%
Activities	Is implementation on time?		% progress (estimate)
	Yes (x)	No (x)	
4.1.1 Identify, register, verify and mobilise target households for cash distributions	X		10%
4.1.2 Engage with a suitable money transfer facility for disbursements	X		30%
4.1.3 Distribute unconditional multi-purpose cash grants to affected households	X		10%
Progress towards outcomes			
The PRC has provided 408 households in Lanao del Norte with PHP 3,000 (CHF 60) worth of cash grant aimed at supporting households purchase self-prioritized needs.			
Outcome 5: Economic security of target population is improved	Outputs		% of achievement
	Output 5.1: 1,000 families are reached with livelihood improvement options		0
Activities	Is implementation on time?		% progress (estimate)
	Yes (x)	No (x)	
5.1.1 Select target households per set criteria and prepare lists of households to be assisted	X		Not Started Yet
5.1.2 Provide selected households with orientation on the programme, distribution process and guidance to generate proposals	X		Not Started Yet
5.1.3 Disburse conditional cash grants in instalments through the service provider	X		Not Started Yet
Progress towards outcomes			
No update as of reporting period			
Outcome 5: Economic security of target population is improved	Outputs		% of achievement
	Output 5.2: 10 community groups supported to establish income generating activities		0

¹ The size of the grant is informed by past experiences and is equivalent to a 10-day wage (300 pesos a day) for the affected region. It is meant to ensure that affected families – which mostly rely on wages from farming and fishing for meeting household needs – can cover immediate needs during the time breadwinners have no income-earning opportunities. The grant is also similar in size to the equivalent value of NFI provided to the other targeted families.

Activities	Is implementation on time?		% progress (estimate)
	Yes (x)	No (x)	
5.2.1 Select community groups that will receive support to restore livelihood	X		Not Started Yet
5.2.2 Provide selected groups with orientation on the programme, distribution process and guidance to generate proposals	X		Not Started Yet
5.2.3 Provide community groups with conditional cash and/or inputs (worth CHF 5,000) for establishing livelihood projects	X		Not Started Yet
Progress towards outcomes			
No update as of reporting period			

Protection, gender and inclusion

Needs analysis: During times of disasters, affected people are made more vulnerable by housing and economic insecurity. Vulnerable population such as children, elderly, persons with disabilities and the sick are at higher risk of exploitation. There is a need to protect these population and incorporate their different needs into the programming.

Population to be assisted: All target households within this appeal are targeted with protection, gender and inclusion programming.

Protection, gender and inclusion			
Outcome 6: Target communities become safer and inclusive by engaging with people most at risk in meeting their needs and rights	Outputs		% of achievement
		Output 6.1: Issues of protection, gender and inclusion are mainstreamed in the operation	
Activities	Is implementation on time?		% progress (estimate)
	Yes (x)	No (x)	
6.1.1 Coordinate with relief and WASH sectors for the provision of dignity kits	X		10%
6.1.2 Coordinate with cash sector in the provision of multi-purpose cash	X		100%
6.1.3 Coordinate with shelter and DRR sectors in the provision of solar lamps	X		Not Started Yet
6.1.4 Conduct awareness sessions on child protection and SGBV referral services	X		10%
6.1.5 Provide PGI technical support during distributions and sector service delivery	X		10%
6.1.6 Ensure sex, age and disability disaggregated data is collected and analysed	X		10%
6.1.7 Provide follow up and technical support in compliance with IFRC Minimum Standard Commitments to Gender and Diversity in Emergency Programming	X		10%
Progress towards outcomes			
The IFRC country office are coordinating with the relief and WASH sectors of the PRC for the provision of dignity kits. The CO is also supporting the PRC cash transfer programming for technical and logistical arrangements.			
The country office also has a PGI focal person that supports the PRC to ensure that thematic areas such as child protection and sexual and gender-based violence are incorporated in the programming. Sex, age and disability data is also being collected as distributions are conducted.			

Disaster risk reduction

Needs analysis: The Philippines is vulnerable to various disasters, including typhoons and floods. The frequency of natural disasters highlights the need to ensure that community preparedness and risk reduction measures are initially implemented alongside relief and recovery interventions and continued under the Operational Plan 2017/2018. As part

of protecting and restoring community resilience to disasters, community-based disaster risk reduction activities will be undertaken.

Population to be assisted: Community-based disaster risk reduction activities will be implemented in ten communities and two schools. This will be done in the context of Red Cross 143, by having early warning early action agents to identify local risks, vulnerabilities and capacities to build a resilient community.

Disaster risk reduction			
Outcome 7: Communities' resilience to disasters is enhanced	Outputs		% of achievement
		Output 7.1: Target population is reached with information on reducing disaster risk	
Activities	Is implementation on time?		% progress (estimate)
	Yes (x)	No (x)	
7.1.1. Carry out assessments to identify 10 communities and 2 schools to be supported	X		Not Started Yet
7.1.2 Guide target communities and schools to undertake risk assessment and develop disaster risk management plans	X		Not Started Yet
7.1.3 Support target communities and schools to disseminate their disaster risk management plans to key stakeholders	X		Not Started Yet
7.1.4 Organize drills in the target communities and schools to test their disaster risk management plans	X		Not Started Yet
Progress towards outcomes			
No update as of reporting			

National Society capacity building

Needs analysis: The response to Tropical Storm Tembin is putting pressure on the capacity of PRC chapters involved and demands scaling up of organizational components. There is, therefore, the need to put efforts on strengthening the institutional preparedness capacity of the National Society's headquarters and branches involved in the response. Information technology and office equipment are also needed in the chapters to ensure efficient capturing and sharing of information.

Population to be assisted: Chapters and NHQ will be supported to obtain essential services and equipment.

National Society capacity building			
Outcome 8: National Society capacity to deliver on programmes and services in future disasters strengthened	Outputs		% of achievement
		Output 8.1: Increased skillsets for PRC to respond to disasters and crises	
Activities	Is implementation on time?		% progress (estimate)
	Yes (x)	No (x)	
Cash transfer programming capacity enhancement	X		Not Started Yet
CEA capacity enhancement.	X		Not Started Yet
Emergency needs assessment (ENA) capacity enhancement.	X		Not Started Yet
Information Management capacity enhancement (including on digital distribution lists).	X		Not Started Yet
Logistics capacity enhancement	X		Not Started Yet
PMER capacity enhancement.	X		Not Started Yet
Protection, gender and inclusion capacity	X		Not Started Yet
Security management capacity enhancement.	X		Not Started Yet
Progress towards outcomes			
No update as of reporting period.			

Outcome 8: National Society capacity to deliver on programmes and services in future disasters strengthened	Outputs			% of achievement
	Output 8.2: Increased material capacity for PRC to respond to disasters and crises			0
Activities		Is implementation on time?		% progress (estimate)
		Yes (x)	No (x)	
	Enhancing disaster preparedness stocks	X		Not Started Yet
	Information Communication Technology (ICT) capacity enhancement.	X		Not Started Yet
	Training, coaching and mentoring of staff and volunteers on various sector technical aspects.	X		Not Started Yet
Progress towards outcomes				
No update as of reporting period.				
Outcome 8: National Society capacity to deliver on programmes and services in future disasters strengthened	Outputs			% of achievement
	Output 8.3: Increased systems and process for PRC to respond to disasters and crises			0
Activities		Is implementation on time?		% progress (estimate)
		Yes (x)	No (x)	
	Support for implementing priorities self-assessment and strategic plans	X		Not Started Yet
	Upgrading/repair of national headquarters facilities	X		Not Started Yet
	Volunteer management capacity enhancement.	X		Not Started Yet
Progress towards outcomes				
No update as of reporting period.				
Outcome 8: National Society capacity to deliver on programmes and services in future disasters strengthened	Outputs			% of achievement
	Output 8.4: Improved capacity of target PRC branches to respond to disasters and crises			0
Activities		Is implementation on time?		% progress (estimate)
		Yes (x)	No (x)	
	Branch capacity enhancement.	X		Not Started Yet
	Upgrading/repair of branch facilities	X		Not Started Yet
Progress towards outcomes				
No update as of reporting period.				

Quality programming

Needs analysis: PRC needed to deploy teams to undertake assessments with the view of determining the specific needs of affected people. The assessments conducted by a composite PRC-IFRC teams in affected provinces have been used to define the need for this plan. For all responses barangay recovery committees will be established to lead selection of beneficiary households and general monitoring.

Recognizing that affected people are not passive recipients of assistance but rather at the core of the operation, the operation needs to ensure adequate measures for community engagement. In addition to ensuring the formation of barangay recovery committees, PRC needs to enact measure that will enable affected communities to access information on the nature and scope of services provided by PRC, along with processes that will enable community participation and feedback.

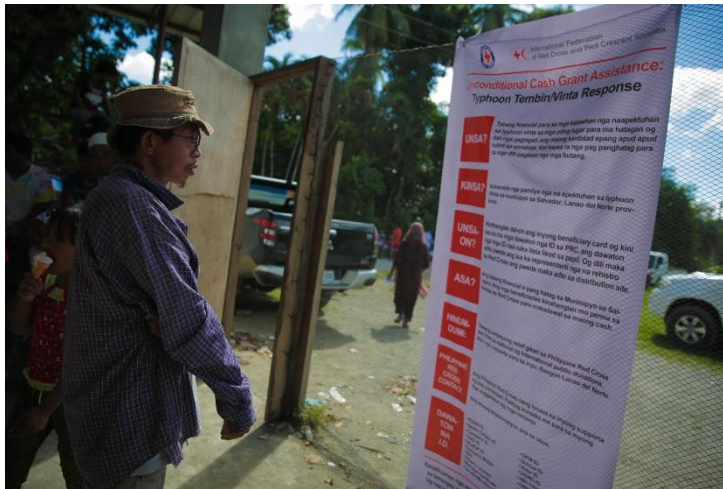
Finally, there is a need to ensure that implementation is informed by continuous monitoring and where necessary adjustments made; as they are being made through this revised plan. It is important to gauge the level of satisfaction among people reached, such as via post-assistance surveys. Monitoring needs to be done not only by PRC chapters involved in implementation but also by staff from PRC national headquarters, the IFRC country office and regionally-

mobilized resource persons. At the end of the operation, it will be necessary to undertake a review to capture lessons garnered over the course of implementation.

National Society capacity building			
Outcome 9: Continuous and detailed assessment and analysis is used to inform the design and implementation of the operation and community engagement strategies.	Outputs		% of achievement
	Output 9.1: The operation is informed by continuous and detailed assessment and analysis is conducted to identify needs and gaps and select people to receive assistance		50%
Activities	Is implementation on time?		% progress (estimate)
	Yes (x)	No (x)	
9.1.1 Mobilize PRC staff and volunteers, supported by IFRC personnel, for assessments	X		50%
9.1.2 Undertake assessments and validation to determine specific needs of affected people	X		50%
9.1.3 Develop detailed response plans with activities that will meet identified needs of affected people	X		50%
Progress towards outcomes			
The PRC deployed assessment teams to six provinces. The results of these assessments were incorporated in the PRC and IFRC emergency plan of action. An IFRC field delegate and field officer support PRC rapid assessments.			
Outcome 9: Continuous and detailed assessment and analysis is used to inform the design and implementation of the operation	Outputs		% of achievement
	Output 9.2: Management of the operation is informed by an appropriate monitoring and evaluation system		10%
Activities	Is implementation on time?		% progress (estimate)
	Yes (x)	No (x)	
9.2.1 Ensure that any adjustments to initial plans are informed by continuous assessment of needs	X		50%
9.2.2 Ensure continuous monitoring of implementation by PRC and IFRC teams	X		10%
9.2.3 Conduct post-action surveys to determine the level of satisfaction among people	X		Not Started Yet
9.2.4 Conduct an end-line evaluation of the operation	X		Not Started Yet
Progress towards outcomes			
Detailed assessments are also underway. Once results are received and analysed, they will be incorporated to any revision of the PRC and/or the IFRC plans of action. Monitoring of the situation will be done by the PRC with support from the IFRC field and PMER officers. A post-distribution monitoring of cash and non-food item distribution is also being planned for late January.			
Outcome 9: Continuous and detailed assessment and analysis is used to inform the design and implementation of the operation	Outputs		% of achievement
	Output 9.3: Target communities have access to actionable information about the response and engage with PRC to influence and guide decisions		0
Activities	Is implementation on time?		% progress (estimate)
	Yes (x)	No (x)	
9.3.1 Facilitate the formation of barangay recovery committees for selection of target households and community-led monitoring	X		In progress
9.3.1 Provide appropriate information, including on the scope and content of interventions, to affected people	X		50%
9.3.2 Ensure that affected people can deliver feedback, report complaints in confidence	X		50%

Progress towards outcomes

PRC posted tarpaulins in distribution sites and barangay centres to inform the target population of the type and amount/quantity of the assistance they are meant to received.



A PRC tarpaulin containing information about the cash assistance is posted in the distribution centre.
Photo: PRC

Challenges

There have been difficulties in accessing some areas due to extensive damage in infrastructure such as roads and bridges. Furthermore, more rain in the area have further hampered assessment and relief efforts. Capacity in terms of manpower and equipment is also low in some chapters.

Reference documents

Click here for:

- [DREF Operation](#)
- [DREF Operation Update 1](#)
- [Emergency Appeal](#)
- [Emergency Plan of Action](#)

Contact Information

For further information, specifically related to this operation, please contact:

Philippine Red Cross, Metro Manila:

- Atty. Oscar Palabyab, Secretary General; phone: +63 2 790 2300; email: oscar.palabyab@redcross.org.ph
- Resty Lou Talamayan, Manager for Disaster Management Services, email: restylou.talamayan@redcross.org.ph

IFRC Philippine Country Office, Metro Manila

- Patrick Elliott, Operations Manager; phone: +63 998 961 2140; email: patrick.elliott@ifrc.org

IFRC Asia Pacific Regional Office, Kuala Lumpur:

- Martin Faller, Deputy Regional Director; email: martin.faller@ifrc.org
- Nelson Castano, Head of Disaster and Crisis Unit (DCPRR); email: nelson.castano@ifrc.org
- Maya Helwani, Surge Operations Coordinator; mobile: +60 182106932; email: maya.helwani@ifrc.org
- Ezekiel Simperingham, Migration Coordinator; email: ezekiel.simperingham@ifrc.org
- Riku Assamaki, Logistics Coordinator, Regional Logistics Unit; email: riku.assamaki@ifrc.org
- Rosemarie North, Communications Manager; mobile: +60 122308451; email: rosemarie.north@ifrc.org
- Sophia Keri, resource mobilization in emergencies coordinator; email: sophia.keri@ifrc.org
- Clarence Sim, Planning, Monitoring, Evaluation and Reporting Manager; email: clarence.sim@ifrc.org

IFRC Head Office, Geneva:

- Cristina Estrada, Response and Recovery Lead; phone: +412 2730 4260; email: cristina.estrada@ifrc.org
- Susil Perera, Senior Officer, Response and Recovery; phone: +412 2730 4947; email: susil.perera@ifrc.org

How we work

All IFRC assistance seeks to adhere to the **Code of Conduct** for the International Red Cross and Red Crescent Movement and Non-Governmental Organizations (NGO's) in Disaster Relief and the **Humanitarian Charter and Minimum Standards in Humanitarian Response (Sphere)** in delivering assistance to the most vulnerable. The IFRC's vision is to inspire, **encourage, facilitate and promote at all times all forms of humanitarian activities** by National Societies, with a view to **preventing and alleviating human suffering**, and thereby contributing to the maintenance and promotion of human dignity and peace in the world.

The IFRC's work is guided by Strategy 2020 which puts forward three strategic aims:



Save lives,
protect livelihoods,
and strengthen recovery
from disaster and crises.



Enable **healthy**
and **safe** living.



Promote **social inclusion**
and a culture of
non-violence and **peace**.