

www.ifrc.org
Saving lives,
changing minds.

Emergency Plan of Action Final Report

Ghana: Floods

 International Federation
of Red Cross and Red Crescent Societies

DREF operation	Operation n° MDRGH014
Date of Issue: 27 September 2018	Glide number:
Date of disaster: July 2017	
Operation start date: 15 July 2017	Operation end date: 21 October 2017
Host National Society: Ghana Red Cross Society	Operation budget: CHF 222,447
Number of people affected: Approximately one million people in Greater Accra, Eastern, Central and Western Regions of Ghana	Number of people assisted: <ul style="list-style-type: none">○ 6,000 people (1,000 families) direct beneficiaries● 10,000 people indirect beneficiaries
National Societies involved in the operation: 60,000 of volunteers, 50 staff, 10 branches	
N° of other partner organizations involved in the operation: Ghana Health Services, Ministry of Local Government, National Disaster Management Organization (NADMO), Local Government, WHO, UNICEF	

A. SITUATION ANALYSIS

Description of the disaster



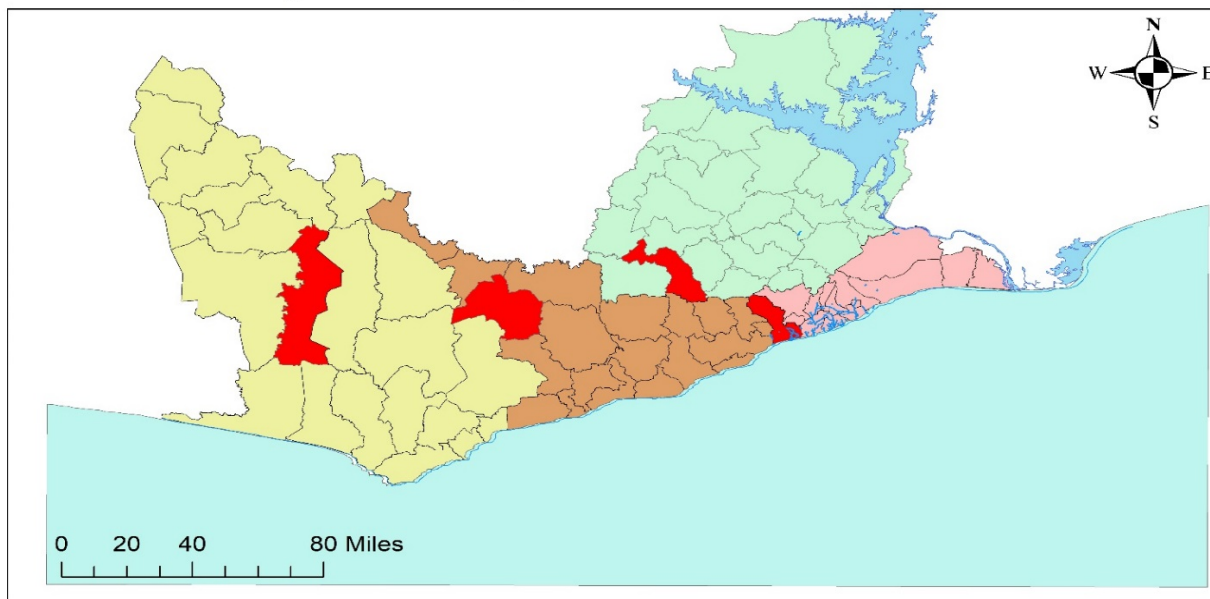
A child sitting at the entrance of a flooded house © GRCS

In April 2017, Ghana experienced a sharp alteration in its weather which resulted in widespread flooding reported in over five regions out of which four were heavily affected. These floods caused devastating impact to people's health, safety and destruction to properties and livelihood. The reported flooding across the country also caused devastation which communities and government were unable to cope with or even recover from as; farmers lost their investments in production, communities were helplessly being displaced and some infrastructure, such as roads and buildings collapsed.

By 10th of July 2017, about four regions including Greater Accra, East, West and Central Regions were declared to have flood emergencies with potential to cause devastation. According to assessments conducted in Greater Accra, households located in the low-lying areas in Weija and Tetegu in the Ga South Municipality had been inundated with

water because of a spillage from the Weija dam. By the time the NS was conducting assessments, most of the affected areas were inaccessible. In the Central Region, about 400 individuals were affected by the floods and several hectares of farmland were left destroyed. The main affected areas in the Central Region were New Tufoe, Old Praso, Kookoase, Twansukoda, Arab Area and Bankyease. About 1,000 individuals were displaced and left to seek refuge in schools and churches due to flood water coming from Tano river and other tributaries in the Western Region. These people were residing in Samreboi, Wassa Dunkwa, Aboi Nkwanta Samreboi communities within the Wassa Amenfi West District. In the Eastern region, the floods affected Ahiatropa community resulted in 26 houses collapsing and the displacement of close to 100 peasant farmers. Some of the displaced residents, mostly women and children, had to seek accommodation in church buildings and a classroom.

Areas Greatly Affected by Floods in some Districts of Ghana



Legend

— waterways	Central Region	Western Region	Greater Accra	Eastern Region
— Coastline	<all other values>	<all other values>	<all other values>	<all other values>
Sea	CAPITAL	DISTRICT	DISTRICT	DISTRICT
Lake_Volta	Twifo Praso	Wassa Amenfi West	Ga South	Birim Central

Summary of response

Overview of Host National Society



The Ghana Red Cross Society has 60,000 of volunteers, 50 staff, 10 regional offices across the country. The NS has 55 trained and established District Disaster Response Team (DDRTs) members, plus 30 National Disaster Response Team (NDRT) members, 8 Regional Emergency Response Teams (RERT) consisting of 135 members, 50 National Society staff, and five partner National Society (PNS) staff.

During the floods, the NS worked with other stakeholders to conduct needs assessments in the

affected communities. These assessments became the basis of the support provided to the affected families. The NS through its volunteers was able to provide health education and to raise awareness in the communities as well as distribute IEC materials to the targeted households. The NS, through support from the DREF, provided support to a total number of 1,000 families with NFIs. The table below provides a summary of the support given to the affected families by the GRCS:

ITEM	QUANTITY ¹
Blankets	1,000
Mosquito nets	1,000
Mats	1,000
Bedsheets	1,000

Overview of Red Cross Red Crescent Movement in country

The IFRC, through its WASH delegate based in Ghana and with technical support from the Abuja Country Cluster office, worked closely with the National Society by supporting its staff and volunteers in all activities of the Red Cross and ensuring that management and operational issues were directed and implemented in accordance with the principles and core values of the Red Cross Movement to reach the needs of the most vulnerable. Consultative and coordination meetings were established in country between the NS, IFRC and Swiss Red Cross Society, (the only PNS with presence in Ghana). Similar meetings were held through Skype calls between technical departments of the NS and IFRC at the Cluster, Africa Region and Geneva levels.

Overview of non-RCRC actors in country

The major stakeholders in Ghana are National Disaster Management Organization (NADMO) responsible for coordination at all levels, Ghana Health Service, District Assemblies, traditional leadership, UN agencies and other civil society.

NADMO could not cope with the overwhelming needs that came about because of the floods and had to appeal for support from local stakeholders including corporate bodies and non-governmental organizations. The government through NADMO was only able to support some 2,000 people with non-food items from their remaining contingency stock.

Needs analysis and scenario planning

Based on findings from key informants, direct observations and secondary data review, it was found that wide spread floods had affected most vulnerable communities within Greater Accra, Eastern Region, Western and Central Regions due to the unusual rains in most parts of the country. The identified needs of the affected communities were as follows:

¹ Note that items distributed were not aligned with Sphere standards as the families were found to not have completely lost their belongings. As such, the items distributed during this operation (1 per household) were complementary to what the beneficiary households already owned.

Shelter - The floods had impacted severely on the communities, leaving most of the families displaced without accommodation and their household properties destroyed. There was need to support the affected households with immediate shelter assistance.

Non-food Items - The destruction of their homes also meant that the families did not have basic materials such as blankets, mattresses, basic household utensils and hygiene items.

Food - The families also faced a challenge as the floods had destroyed their farms as well as their stocks; as such, they needed food support to meet their daily requirements.

WASH - The flooding also posed a great challenge as households did not have access to safe water as most water sources and sanitation facilities had been destroyed by the floods. Sanitation facilities and access to health support was important.

Protection issues were also important i.e. security especially for women, children and the elderly, as they were living in crowded shelters.

Due to limited and or no access to the above-mentioned amenities, the affected communities were highly exposed to diarrheal diseases particularly cholera as it is endemic in those regions, malaria, due to exposure to mosquitoes, possible loss of livelihood and physical abuse of most vulnerable being taken advantage of by scrupulous individuals.

Against this background, GRCS requested for DREF to support at least 1,000 families, affected by the floods in Greater Accra, Central and Western Region to provide health, WASH and basic shelter services to complement government efforts. The table below highlights the number of people assisted per region:

REGION	NO. OF BENEFICIARIES
Greater Accra	250
Volta	250
Central	250
Western	250
Total	1,000

A more in-depth assessment was scheduled by GRCS to have a more informed context overview of the situation as a matter of priority. Primary data was collected by trained volunteers using the MAGPI application using the RAMP account hosted in Geneva. The aim of an in-depth assessment was to create an in-depth overview on extend of the floods in the selected communities, identify immediate and long-term needs and risk mapping of potential threats.

B. OPERATIONAL STRATEGY

Overall objective

The overall objective of the operation was to improve the health and shelter needs of 1,000 families affected by floods in three regions i.e. Greater Accra, Central, Volta and Western Regions.

Proposed strategy


To achieve this objective, the GRCS focused its interventions on three main areas of focus which included Shelter, water, hygiene and sanitation, as well as health.

Shelter- the support on shelter focused on the provision of non-food items which were given to the targeted 1,000 households. In this regard, the training of volunteers on beneficiary selection and a beneficiary selection process was conducted, and a total number of 1000 of households received support in the form of blankets. The NS also procured 1000 mosquito nets, 1000 mats and 1000 bedsheets which were distributed to the affected households.

Health- The NS trained a total number of 80 volunteers on the community-based health and first aid (CBHFA) approach and on social mobilization, and psychosocial support (PSS). Their role was to reach out to the affected communities and provide relevant services related to health education and psychosocial support. The 80 volunteers conducted house to house visits to 1,000 households, providing education to families on the use of mosquito nets as well as to distribute the 10,000 IEC material which had been produced to help prevent the spread of malaria through providing relevant education to the targeted communities.

Water and Sanitation- Under this activity the NS trained 80 volunteers to conduct social mobilization, health and hygiene promotion. The volunteers embarked on a house to house hygiene promotion campaign distributing IEC materials for 30 days in the affected communities and reached out to a total number of 10,000 people. The NS also ensured the communities were supported with real time information which was lifesaving through flood awareness alerts and health and hygiene promotion messages through mass media and jingles on local radios. A total number of 8 radio sessions, one per week for 8 weeks were conducted during the operation. A total number of 1,000 hygiene **kits** which included ORS, soap, menstrual pads, aqua tabs, etc. were distributed to the targeted families. The GRCS had planned to procure and set up temporary latrines and hand washing facilities to support the affected families in their transit areas. However, both the latrines and handwashing facilities were not procured because by the time the funds were received by the NS, these interventions were no longer relevant as people had already moved back to their communities.

C. DETAILED OPERATIONAL PLAN

 <p>Shelter People reached: 1000 households Male: <i>Not available</i> Female: <i>Not available</i></p>		
Outcome1: Communities in flood affected areas are meeting their basic needs for emergency shelter NFIs		
Output 1.1: Affected households in flooded areas are assisted with basic NFIs		
Indicators:	Target	Actual
Local procurement and distribution of NFI basic clothing sets including blankets to 1,000 households	1,000	1,000

Narrative description of achievements

Forty (40) volunteers were selected and trained to conduct beneficiary targeting and selection of beneficiaries, which were effectively done.

A total of 1,000 families were identified as most vulnerable and registered after the completion of the assessment in the various communities in the 4 regions affected. To facilitate the distribution of relief items, one-off distribution ration cards were printed and given to the beneficiaries. Under the same outcome, a total number of 1,000 households benefited from the distribution of blankets, mats, mosquito nets and bedsheets. The table highlights the NFIs that were distributed to the affected families during the operation:

ITEM	QUANTITY
Blankets	1,000
Mosquito nets	1,000
Mats	1,000
Bedsheets	1,000

Challenges

No challenges were encountered during the implementation of this outcome.

Lessons Learned

Adopting the use of effective mobile data tools for beneficiary registration is effective and fast and reduces time taken to have clear and clean data of beneficiaries of a response.



Health

People reached: 1000 Households

Male: *Not available*

Female: *Not available*

Outcome1: Reduce health risks, morbidity and mortality as a result of the emergency on the affected population through the provision of health promotion, preventive, community-level and referral services to 1,000 families in affected areas for three months

Output 1.1 Community-based disease prevention and health promotion is provided to the target population

Indicators:	Target	Actual
Train 80 volunteers using community-based health and first aid (CBHFA) approach on social mobilization, and psychosocial support (PSS)	80	80
Purchase and distribute insecticide treated mosquito nets and NFIs to 1000 households	1,000	1,000
Conduct house-to-house social mobilization on use of mosquito nets by 80 deployed volunteers	1,000	1,000
Production and distribution of IEC materials to affected households to promote malaria prevention	10,000	10,000

Narrative description of achievements

Eighty volunteers received a three days training on how to conduct community-based health and hygiene promotion. The volunteers were trained on the use of Community-based Health and First Aid (CBHFA) approach on social mobilization and psychosocial support (PSS). The training content included definition, causes, signs and symptoms and prevention of diarrheal diseases and malaria. The training also included communication skills, how to conduct and manage community meetings, house to house discussion groups using health posters. Demonstration of how to use mosquito nets, how to use oral dehydration solutions for treatment of diarrhoea and how to use household water treatment chemicals e.g. aqua tablets.

The procurement of insecticide treated mosquito nets, blankets, bedsheets and mats to support the targeted households was done and the items were distributed to the families.

The house to house social mobilization on the use of insecticides treated mosquito nets was carried out. A total of about 1,000 households benefited. The training also covered how households could also use the water treatment items properly.

A total of 10,000 pieces of Information, Education and Communication (IEC) materials were procured and distributed to affected households during the promotion of malaria prevention

Challenges

No challenges were experienced during the implementation of this outcome.

Lessons Learned

It is imperative to train a pool of volunteers as part of community-based disaster preparedness, particularly in risk prone areas. This will help to ensure that skilled volunteers are available to support communities when disasters strike.



Water, sanitation and hygiene

People reached: 10,000 people

Male: *Not available*

Female: *Not available*

Outcome 1: The risk of water-borne and water-related diseases is reduced through the provision of safe water, adequate sanitation and hygiene promotion to 1,000 families in the affected communities

Output 1. Hygiene promotion activities and use of hygiene items provided to 1,000 target families through social mobilization teams

Indicators:	Target	Actual
Recruit and train 80 volunteers in social mobilization, health and hygiene promotion	80	80
Deploy the 80 volunteers to conduct social mobilization on health and hygiene through house-to-house approach (80 for 30 days)	80	80
Production and distribution of IEC materials on hygiene	10,000	10,000
Flood awareness, alerts and health and hygiene promotion messages through mass media, jingles on local radios		Done

Output 1.2 Hygiene-related goods (NFIs) which meet Sphere standards are provided to the target population

Indicators:	Target	Actual
Local procurement and distribution of 1,000 hygiene kits (ORS, soap, menstrual pads, aqua tabs, etc.) to families within 3 months	1,000	1,000

Output 1.3: Adequate Water and sanitation which meets Sphere standards in terms of quantity and quality is provided to target population, in collaboration with local authorities

Indicators:	Target	Actual
Local procurement and installation of prefabricated temporary latrines	100	0

Installation of hand washing stations at all public institutions hosting displaced population	100	0
A door-to-door awareness campaign to disseminate key messages on the prevention of water-borne diseases, particularly cholera	-	10,000
Monitor treatment and storage of water through household surveys and household water quality tests.		Done
Narrative description of achievements		
<p>Eighty (80) volunteers were recruited and trained in social mobilization and hygiene promotion.</p> <p>Demonstration on the household use of aqua tabs was effectively done with beneficiaries-- this exercise was incorporated in the house to house social mobilization activities by the volunteers.</p> <p>There were flood awareness talks on local radios on health and hygiene promotion in the affected regions. In total, the NS was able to conduct 8 radio sessions in 8 weeks i.e. 1 session per week.</p> <p>A total of about 10,000 people in the affected communities were reached with health and hygiene promotion activities through house to house social mobilization exercises.</p> <p>The NS had planned to procure and set up 100 latrines and 100 hand washing facilities. However, this was not done as the DREF funds were disbursed late to the NS such that by the time the NS received the funds, this activity was no longer relevant as people had moved back to their homes.</p>		
Challenges		
<p>The DREF implementation period was just for 3 months, however there were delays in disbursement of funds and this affected implementation of planned activities. In this case, the NS was not able to implement the planned WASH activities like the procurement and setting up of the latrines and hand washing facilities which were supposed to have been set up when the communities were still in transit camps.</p>		
Lessons Learned		
<p>Having prepositioned stocks can be useful in ensuring that the NS responds in a timely and relevant manner. It is important for the NS to be able to provide life-saving services to communities immediately after the disaster as this will also ensure the relevance of the Red Cross in disaster response</p>		

Effective, credible and accountable IFRC

Outcome 1: Continuous and detailed assessment and analysis is used to inform the design and implementation of the floods operation

Output 1.1 Initial needs assessment are updated following consultation with beneficiaries

Indicators:	Target	Actual
Training of 40 volunteers on Rapid Mobile Phones-based (RAMP) survey and using standard data collection forms	40	40
Conduct in-depth assessment reports, which provide data on affected population and their vulnerabilities	-	Done

Output 1.2 The emergency plan of action is updated and revised as necessary to reflect needs

Indicators:	Target	Actual
Update the plan of action to reflect prevailing needs		Done

Outcome 2 The management of the operation is informed by a comprehensive monitoring and evaluation system

Output 2.1 Monitoring data informs revisions of plan of action where appropriate

Indicator	Target	Actual
Data collection and analysis of activities through daily, weekly and monthly situation updates		Done
Regular operation review (daily, weekly and monthly) in accordance with involvement of situation		Done

Output 2.2 The findings of evaluations lead to adjustments in on-going plans and future planning as appropriate

--	--	--

Indicators:	Target	Actual
Conduct DREF evaluation and lesson learned assignment supported by Abuja Cluster and/or Africa Region	1	0
Narrative description of achievements		
<p>Forty volunteers were trained in the use of data collection and reporting using Rapid Mobile Phones-based (RAMP) survey guidelines. Volunteers were sourced from the four affected regions, 10 in each region of Greater Accra, Central Region, Volta and Western Regions respectively.</p> <p>Additionally, a five-day refresher training was held for NDRT members. They were taken through disaster needs assessment, WATSAN in emergencies, logistics, WATSAN kit 5, among other areas. A total of 30 participants made up of volunteers and staff were trained.</p> <p>Detailed assessment was conducted in the affected communities and the affected population registered for relief. An assessment and beneficiary registration exercise were carried out by the regional teams. The beneficiary registration was the basis for subsequent distribution of non-food items to 1,000 families benefiting 15 communities.</p> <p>The NS was not able to conduct the lessons learnt workshop because the DREF timeframe had elapsed.</p>		
Challenges		
<p>The assessment was conducted two months after the emergency; by this time, the flood water had already receded and some of the affected household had already returned to their respective locations.</p> <p>Due to lack of coordination especially at Regional level, there was limited overview on who's doing what and where which resulted in Adhoc intervention.</p> <p>Due to late disbursement of funds, the NS was not able to conduct a lesson learnt workshop as the DREF timeframe had elapsed.</p>		
Lessons Learned		
<p>Ghana Red Cross should create funding reserve and contingency stock for rapid deployment to respond to onset emergency like floods.</p> <p>Advocacy for government to strengthen emergency response and coordination capacities at regional levels is essential for improved disaster response.</p>		

D. THE BUDGET

The overall budget for this operation was CHF 222,447 of which CHF 93,299 (41.94%) were spent. As such, a balance of CHF 129,148 will be returned to the DREF. Expenditure of the DREF was quite low because the NS received the funds a bit late and by the time the funds were received, some of the activities were no longer relevant and could not be implemented.

Explanation of variances:

Activity	Budget	Variance	Explanation
Clothing and textiles	25,000	-18,415	The budget for clothing and textiles was overspent by 73.66% as the line was under budgeted as compared to the needs on the ground there. As such, there was an over expenditure due to procurement of blankets, mattresses, bed sheets and mosquito nets for the beneficiaries.
Water and sanitation	48,200	48,200	The budget line was not used due to late disbursement of funds to the NS. By the time the funds arrived the intervention was no longer relevant
Medical and First Aid	30,000	30,000	The budget line was not used due to late disbursement of funds to the NS. By the time the funds arrived the intervention was no longer relevant
Teaching Materials	10,000	10,000	The budget line was not used due to late disbursement of funds to the NS. By the time the funds arrived the intervention was no longer relevant
Utensils and tools	26,000	26,000	The budget line was not used due to late disbursement of funds to the NS. By the time the funds arrived the intervention was no longer relevant
Other supplies and services	3,000	3,000	The budget line was not used due to late disbursement of funds to the NS. By the time the funds arrived the intervention was no longer relevant
Distribution and Monitoring	1,600	1,600	The budget for the distribution costs was not utilized as there were no major procurements for NFIs done.
Storage	2,400	2,400	Since no major procurements during the operation there was no need for storage facilities hence the budget line was not used.
National Society Staff	9,450	-1,114	The budget for NS staff which included their travel costs and perdiems was understated. More costs were incurred during the operation leading to the over expenditure.
Volunteers	2,520	-1,091	The budget for volunteer incentives was understated. Volunteers were engaged in the awareness raising activities hence more incentives were paid leading to the over expenditure.
Workshops and training	41,800	23,863	The NS had planned for a lesson learnt workshop which was not conducted due to late implementation of the project.
Travel	0	-4,767	There was an omission of the budget to cover for monitoring by the IFRC however, this was necessary hence the variance.
Information and Public relations	1,000	1,000	There was no expenditure under this budget line
Communication	1,650	1,628	The budget line for communication was not used
Financial charges	0	-434	There was no provision for financial charges in the budget, but these were necessary hence the variance.

Contact information

For further information, specifically related to this operation please contact:

National Society

- **Ghana Red Cross Society:** Secretary General, Ghana Red Cross; email: redcrossghana@yahoo.com; phone: +233 020 6983284

In the IFRC

- **IFRC Country Representation Office:** Abel Augustinio, WASH delegate in Ghana; Accra; phone: +233 56 025 0163; email: abel.augustinio@ifrc.org
- **IFRC Head of Cluster, West Coast:** Dr Michael Charles, Acting Head of Cluster, West Coast Region; Abuja, Nigeria; phone: +2348186730823; email: michael.charles@ifrc.org
- **IFRC Africa Region:** Adesh Tripathee, Head of DCPRR Unit; Nairobi; Kenya phone: +254 202835000; (email: adesh.tripathee@ifrc.org)
- **IFRC Zone Logistics Unit (ZLU):** Rishi Ramrakha, Head of zone logistics unit; Tel: +254 733 888 022 / fax +254 20 271 2777; email: rishi.ramrakha@ifrc.org

In IFRC Geneva

- **IFRC Geneva:** Alma Alsayed, Senior Officer, Response and Recovery; phone: +41 22 730 4566; email: alma.alsayed@ifrc.org

For IFRC Resource Mobilization and Pledges support:

- **In IFRC Africa Zone:** Kentaro Nagazumi, Head of Partnership and Resource Development, Nairobi; phone: +254202835155; email: kentaro.nagazumi@ifrc.org

For Performance and Accountability support (planning, monitoring, evaluation and reporting enquiries)

- **IFRC Zone:** Fiona Gatere, PMER Coordinator; phone: +254780771139; email: fiona.gatere@ifrc.org

How we work

All IFRC assistance seeks to adhere to the **Code of Conduct** for the International Red Cross and Red Crescent Movement and Non-Governmental Organizations (NGO's) in Disaster Relief and the **Humanitarian Charter and Minimum Standards in Humanitarian Response (Sphere)** in delivering assistance to the most vulnerable. The IFRC's vision is to inspire, **encourage, facilitate and promote at all times all forms of humanitarian activities** by National Societies, with a view to **preventing and alleviating human suffering**, and thereby contributing to the maintenance and promotion of human dignity and peace in the world.

www.ifrc.org
Saving lives, changing minds.



The IFRC's work is guided by Strategy 2020 which puts forward three strategic aims:

1. Save lives, protect livelihoods, and strengthen recovery from disaster and crises.
2. Enable healthy and safe living.
3. Promote social inclusion and a culture of non-violence and peace

Disaster Response Financial Report

MDRGH014 - Ghana - Floods

Timeframe: 21 Jul 17 to 21 Oct 17

Appeal Launch Date: 21 Jul 17

Final Report

Selected Parameters			
Reporting Timeframe	2017/7-2018/8	Programme	MDRGH014
Budget Timeframe	2017/7-2017/10	Budget	APPROVED
Split by funding source	Y	Project	*
Subsector:	*		

All figures are in Swiss Francs (CHF)

I. Funding

	Raise humanitarian standards	Grow RC/RC services for vulnerable people	Strengthen RC/RC contribution to development	Heighten influence and support for RC/RC work	Joint working and accountability	TOTAL	Deferred Income
A. Budget		222,447				222,447	
B. Opening Balance							
Income							
<u>Other Income</u>							
DREF Allocations		222,447				222,447	
C4. Other Income		222,447				222,447	
C. Total Income = SUM(C1..C4)		222,447				222,447	
D. Total Funding = B + C		222,447				222,447	

* Funding source data based on information provided by the donor

II. Movement of Funds

	Raise humanitarian standards	Grow RC/RC services for vulnerable people	Strengthen RC/RC contribution to development	Heighten influence and support for RC/RC work	Joint working and accountability	TOTAL	Deferred Income
B. Opening Balance							
C. Income		222,447				222,447	
E. Expenditure		-93,299				-93,299	
F. Closing Balance = (B + C + E)		129,148				129,148	

Disaster Response Financial Report

MDRGRH014 - Ghana - Floods

Timeframe: 21 Jul 17 to 21 Oct 17

Appeal Launch Date: 21 Jul 17

Final Report

Selected Parameters			
Reporting Timeframe	2017/7-2018/8	Programme	MDRGRH014
Budget Timeframe	2017/7-2017/10	Budget	APPROVED
Split by funding source	Y	Project	*
Subsector:	*		

All figures are in Swiss Francs (CHF)

III. Expenditure

Account Groups	Budget	Expenditure					TOTAL	Variance
		Raise humanitarian standards	Grow RC/RC services for vulnerable people	Strengthen RC/RC contribution to development	Heighten influence and support for RC/RC work	Joint working and accountability		
	A					B	A - B	
BUDGET (C)			222,447			222,447		
Relief items, Construction, Supplies								
Clothing & Textiles	25,000		43,415			43,415	-18,415	
Water, Sanitation & Hygiene	48,200						48,200	
Medical & First Aid	30,000						30,000	
Teaching Materials	10,000						10,000	
Utensils & Tools	26,000						26,000	
Other Supplies & Services	3,000						3,000	
Total Relief items, Construction, Sup	142,200		43,415			43,415	98,785	
Logistics, Transport & Storage								
Storage	2,400						2,400	
Distribution & Monitoring	1,600						1,600	
Transport & Vehicles Costs	2,250		1,989			1,989	261	
Total Logistics, Transport & Storage	6,250		1,989			1,989	4,261	
Personnel								
International Staff	4,000		4,866			4,866	-866	
National Society Staff	9,450		10,564			10,564	-1,114	
Volunteers	2,520		3,611			3,611	-1,091	
Total Personnel	15,970		19,041			19,041	-3,071	
Workshops & Training								
Workshops & Training	41,800		17,937			17,937	23,863	
Total Workshops & Training	41,800		17,937			17,937	23,863	
General Expenditure								
Travel			4,767			4,767	-4,767	
Information & Public Relations	1,000						1,000	
Communications	1,650		22			22	1,628	
Financial Charges			434			434	-434	
Total General Expenditure	2,650		5,223			5,223	-2,573	
Indirect Costs								
Programme & Services Support Recovt	13,577		5,694			5,694	7,882	
Total Indirect Costs	13,577		5,694			5,694	7,882	
TOTAL EXPENDITURE (D)	222,447		93,299			93,299	129,147	
VARIANCE (C - D)			129,147			129,147		