


www.ifrc.org
Saving lives,
changing minds.

Emergency Plan of Action (EPoA) Paraguay: Floods

 International Federation
of Red Cross and Red Crescent Societies

DREF N° MDRPY019	Glide n° FL-2018-000419-PRY
Date of disaster: 1 November 2018 ¹	Expected timeframe: 3 months; the operation end date is 28 February 2019
Date of issue: 30 November 2018	DREF allocated: 156,596 Swiss francs (CHF)
Total number of people affected: 30,225 people (6,085 families)	Number of people to be assisted: 3,040 people
Host National Society(ies) presence: The Paraguayan Red Cross (PRC) has 11 branches, 10 sub-branches in the Central department, 1,000 volunteers and 15 staff members.	
Red Cross Red Crescent Movement partners actively involved in the operation: International Committee of the Red Cross (ICRC), International Federation of Red Cross and Red Crescent Societies (IFRC) and Swiss Red Cross.	
Other partner organizations actively involved in the operation: National Emergency Secretariat (SEN), Ministry of Public Health and Social Welfare (MSPBS), Municipality of Asunción, Pan-American Health Organization (PAHO)	

[<Click here for the DREF budget.](#) [Click here for the map of affected areas](#) and [here for the contact information >](#)

A. Situation analysis

Description of the disaster

In Asunción, 30,225 people (6,085 families) were evacuated to 109 temporary collective centres set up by the Municipality of Asunción and one collective centre managed by the National Emergency Secretariat in a military site in Bañado Tacumbú. On 1 November 2018, the Asunción municipal government declared a 90-day citywide emergency. Over the last few weeks, the number of affected people has increased, and the Paraguayan government has had to evacuate them and install improvised temporary lodgings to house them. The rains are expected to continue, putting those who have chosen to remain in their home at risk and threatening to increase the affected population's humanitarian needs. To date, there has been 1,561.7 mm of rainfall in the affected area from 1 January 2018 to 23 November 2018, including a sharp increase from October to November 2018;



Floods in Asunción's Bañado Sur area. Source: Secretary of National Emergency

the rainfall total for 2018 is 350.8 mm higher than the yearly average for the affected region². The unusually heavy rainfall has oversaturated the soil in the affected area and put riverine communities in danger, and recent forecasts suggest that the rainfall will continue unabated, further worsening the situation. The perilousness of the affected communities, the forecasts of additional

¹ The difference between the date of the emergency and the issuance of this DREF is significant because the disaster dramatically worsened toward the end of November 2018.

² Source: National Civil Aeronautical Directorate (DINAC)

rainfall and the precipitous rise in rainfall in November prompted the PRC to request a Disaster Relief Emergency Fund (DREF).

According to the Hydrometeorological Report issued for the Paraguay River by the Meteorology and Navigation Directorate on 19 November 2018, the atypical flooding is due to the significant amount of rainfall recorded in the last week in the Paraguay River's middle basin. In Asunción, the Paraguay River has already exceeded critical levels (5.50 m), and according to predictions, the river will reach a height of seven metres in December 2018 (8 metres for total evacuation)³, surpassing alert levels. Moreover, it is likely that levels will progressively increase due to the rains seen in recent days.

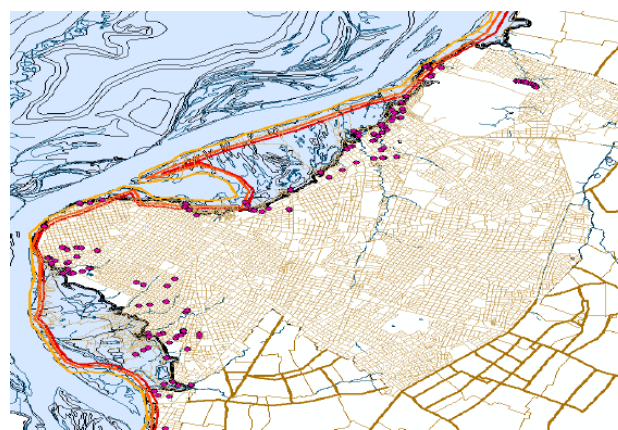
Station/Date	Current	Predicted		
	19 Nov.	26 Nov.	03 Dec.	10 Dec.
<i>Bahía Negra</i>	3.55 E	3.44	3.30	3.10
<i>Concepción</i>	5.11 +1	5.12	5.05	4.99
<i>Asunción</i>	6.02 +2	6.00	5.98	6.03
<i>Pilar</i>	7.35 +2	7.55	7.72	7.93
Range of error: +/-20 cm				

Source: Meteorology and Hydrology Directorate, 2018

The most affected areas are to the south of Asunción along the banks of the Paraguay River known as Bañado Sur, which includes the neighbourhoods of Tacumbú, Santa Ana, San Cayetano, Sajonia and Yukyty; to the north in Bañado Norte, including the neighbourhoods of Tablada Nueva, Mburicaó and Banco San Miguel; and the area of La Chacarita area, including the neighbourhoods of 3 de Febrero, Oriental, Resistencia, San Pedro, San Vicente and San Felipe.

The impact suffered by families in Bañado Norte and Bañado Sur can mainly be attributed to three factors: a) the unusual flooding of the Paraguay River; b) recent road works; and c) poor coordination between the institutions working in the affected area.

There are many risks in the collective centres, beginning with the lack of space for the families that will continue to be evacuated and the uneasy coexistence with residents due to the occupation of public spaces.



Georeferenced map of the collective centres in Asunción Source: Ministry of Public Health and Social Welfare.

Affected families	Bañado Norte	Chacarita	Bañado Sur	Total
<i>Families in collective centres</i>	43	20	45	108
<i>Families assisted not housed in collective centres</i>	106	0	52	158
<i>Evacuated families</i>	2,149	810	3,126	6,085
Total	2,298	830	3,223	6,351

³ Meteorology and Hydrology Directorate, 2018

Summary of the current response

Overview of Host National Society

The PRC's national headquarters is located in Asunción. It currently has an operational unit within the territory, the Asunción Branch, which, in coordination with the municipality of Asunción has responded to the Programmes and Operations Directorate's call for assistance since the onset of the disaster.

The National Society's emergency operations centre (EOC) has been activated through the Programmes and Operations Directorate, as has its National Information Management Centre, which is attached to its Planning, Monitoring, Evaluation and Reporting (PMER) Unit; both of these entities are coordinating the efforts to respond to this emergency.

In support of the Asunción branch's operations, the PRC is providing guidance to convene and train new volunteers, as the National Society's headquarters has more experience in this area.

The PRC has carried out the following actions:

- Psychosocial support (PSS) actions, participation in the protection and gender-based violence activities, the distribution of materials and activities on health promotion.
- The National Society is providing guidance for camp management in Municipal Operations Centres on information management, operations and management.
- Conducting damage and needs assessment. water, sanitation and hygiene promotion (WASH), and protection assessments in the collective centres, as well as a census of the people housed with the Open Data Kit (ODK) tool.
- Coordination through the health sector: The PRC is participating in the local health council and the Ministry of Public Health and Social Welfare's Emergency and Disaster Assistance Coordination Centre (ASANED). The PRC's health panel has been activated, which has submitted a health report and identified key actions by humanitarian partners in this regard.
- The PRC is maintaining an active working group is with the Municipality of Asunción in its EOC.

Overview of Red Cross Red Crescent Movement in country

An on-site assessment has been carried out with the Southern Cone Country Cluster, as well as interviews with the National Emergency Minister regarding the targeted municipal centres and the affected families. The ICRC has provided support to the on-site assessment, thus demonstrating the importance of installed capacity in its national headquarters. The IFRC has provided guidance to the PRC on its efforts to identify and prioritize actions and its communications with other Movement components such as Swiss Red Cross, which has expressed interest in supporting National Society's emergency response actions. The PRC is maintaining continuous communication with the Argentine Red Cross (ARC) regarding joint monitoring of the border area near the ARC's Clorinda branch and the PRC's Asunción branch, with support the PRC's national headquarters. Additionally, the IFRC's regional disaster management coordinator for South America is in continuous communication with the PRC.

Overview of non-Red Cross Red Crescent actors in country

- **Municipality of Asunción:** Through its Social Action and Risk Management Directorates, the municipality is assisting with the establishment of emergency operations centres in municipal centres; it has also participated in the Health in Emergencies panel attached to the Municipal Local Health Council.
- **Ministry of Health:** Coordinating health activities through its health in emergencies plan of action.
- **Ministry of Childhood and Adolescence:** Established the rights protection and violence prevention network.
- **The United Nations Population Fund (UNFPA) and World Health Organization (WHO):** Coordinating actions linked to the dissemination of Sphere standards and the strategy to prevent sexual violence in collective centres.

- **National Emergency Secretariat (SEN):** Responsible for inter-institutional management and coordinating the humanitarian response. It has the government's support to implement WASH and protection actions and to strengthen local EOCs.
- **Ministry of Foreign Affairs:** Has made situation reports available and reported on identified needs to act as a liaison for future cooperation.

The Paraguayan government is setting up an information management (IM) room, which will be under the purview of the municipality of Asunción, with technical support from the PRC and financial support from the World Bank.

Needs analysis, targeting, scenario planning and risk assessment

Water, sanitation and hygiene

Access to clean and safe water in collective centres in Asunción is ensured by the water company (ESSAP) through the installation of water faucets; however, some collective centres have limited water supply since these faucets have yet to be installed. Furthermore, the demand is high as one faucet is being used to provide water to 10 families. Moreover, it is necessary to reinforce people's knowledge and use of safe water practices.

In many of the locations where displaced persons have temporarily settled, toilets are just holes in the ground, out in the open and dug near living areas because not all the portable toilets have been installed, and there is no record of assessments specifically for water.

Finally, rain and waste water are not being properly drained, which leads to additional health problems. The National Society should consider applying different methodologies or approaches during its response and recovery interventions.

Health

An increased number of cases of diarrhoea, respiratory infections, skin problems and influenza have been reported in the Asunción area. In this first phase of the emergency, health personnel are being asked to perform information assessment tasks, which reduces the number of hours they are able to devote to the delivery of health care.

The emotional impact on the affected population is noticeable, particularly due to the large number of young people, elderly adults and persons with disabilities living in the collective centres. The feeling of helplessness makes this situation extremely problematic, especially when coupled with the reality of the loss of income due to the emergency, which manifests itself in the inability to purchase construction materials, rent vehicles to move household items and acquire emergency medication.

Children and adolescents are also exposed to high levels of social and family tension, which, in addition to their own losses and difficulty comprehending the situation, poses a challenge to their mental and physical health. Some of the symptoms seen in children include increased aggressiveness, incessant crying and insomnia, among others.

Since these aspects have been observed at the community level, it is necessary to promote community resilience building and work with affected children and adults to overcome this disaster.

Lastly, some people have expressed concern about the possible increase of general and sexual violence in the collective centres.

Shelter

In 2014, SEN established some municipal facilities in Asunción to be used as temporary collective centres; however, these have proved insufficient, leading to the occupation of public and private spaces such as town squares, sidewalks, sports fields, abandoned lots, and churches, among others to shelter evacuated people.

At the moment, most of the evacuated families have dismantled their own houses to build temporary shelters elsewhere; nonetheless, the problem that the local municipality is currently facing is the lack of space to accommodate the newly arriving families, a trend that is expected to continue.

Livelihoods

Commercial activities in Asunción are functioning normally except in affected areas or the neighbourhoods that are close to these areas.

A large part of the affected population in Asunción engages in low-paying jobs or are self-employed (day labour or work in the informal economy), primarily in recycling, fishing, small-scale trade, day labourers or as carpenters, electricians, gardeners, cosmetologists and domestic workers. The forced displacement of those affected has had a negative impact on their daily incomes.

While those engaged in recycling can continue working, they often lack the space to store their items, and some small-scale merchants already have had to consider selling their products and items at a loss to subsist.

Small animals, which were used to supplement income in marginal areas, have had to be sold or died in the emergency.

Community Resilient and Disaster Preparedness

- There is a need to ensure that communities are better prepared to mitigate and respond to future disasters. Some selected communities will be supported with community-based risk reduction activities. Furthermore, all recovery interventions must aim to build community resilience towards future disasters, with community-based risk reduction embedded within all programmes to support community efforts to increase their own disaster resilience and allow them to better withstand the impacts of disasters. A disaster risk reduction (DRR) campaign for community resilient will be needed to raise the affected communities' awareness of the issue.
- As soon as the conditions allow for it, the PRC will conduct an impact analysis to identify specific needs for community preparedness and risk reduction, generate lessons learned and document good practices; the PRC will also carry out an assessment that addresses future risks and vulnerabilities, existing capacities and needs for improvement to strengthen community resilience. Support for the strengthening, adaptation and revision of some tools will be included in the National Society's plan of action and use the Floods Modules and tools for community early warning systems (EWSs).

Operation Risk Assessment

The upper basin, the middle basin between Concepción and Asunción, and the lower basin of the Paraguay River have experienced significant increases in water levels due to rainfall; furthermore, the rains forecast for the next few weeks will continue to cause slight increases.

Given that water levels in the lower basin have increased progressively, it is likely they will continue to rise over the next few weeks due to the rains forecast for the Paraguay River's middle and lower basins.

Unmaintained electrical wires pose a risk to the collective centres in Asunción; consequently, PRC teams entering affected areas need to locate live wires due the danger they pose when wet.

The Safer Access analysis reveals that there is a risk of psychoactive substance abuse and crime in the collective centres given the social dynamics hence, the PRC developed a security plan for the humanitarian response.

Vulnerability and beneficiary selection criteria

The PRC has established the following beneficiary selection criteria:

- Priority will be given to the families most affected by the floods that have received insufficient or no humanitarian assistance to date.

- The most vulnerable people, including female heads of households, the elderly, children and persons with disabilities.
- Damage to homes.
- Areas with low socioeconomic status.

The PRC's identification of affected households for the final selection of beneficiaries (and details on the level of impact) will consider the vulnerability and selection criteria that was used at the time the detailed assessment was conducted.

B. Operational strategy

Target population

Assist at least 3,040 people affected by the floods in Asunción department through the provision of humanitarian aid in of health, WASH, livelihoods and basic needs and protection, gender and inclusion (PGI), as well as support on the management of the emergency as the rainfall continues.

Proposed strategy

The response strategy will be based on need and complement the local response.

Through the PGI, livelihoods, WASH and basic needs and health (PSS) and shelter (safe spaces), the PRC will implement a cross-cutting, rights-based protection approach to contribute to a response that will be tailored to the vulnerable population's needs. As part of PGI, the PRC will provide information on violence prevention and seeking care and disseminate key messages on violence prevention to the target population; the National Society will also train PRC volunteers in violence prevention and coordinate with other humanitarian actors; to reduce violence and contribute to the safety of everyone affected by this disaster.

Operational support services

Human resources

The Asunción branch will be in charge of leading the operation, under the supervision of the PRC's headquarters' Programmes and Operations Directorate.

At the local level, the PRC will hire a coordinator, who will be responsible for coordinating and implementing local-level activities and working with communities and local volunteers; the National Society will also hire an administrator/financial officer to strengthen coordination in the target area and a driver. The IFRC will insure PRC volunteers through the operation, and the PRC will provide them with personal protective gear.

The IFRC will deploy a General Regional Intervention Team (RIT) member with expertise in WASH and a Cash Transfer RIT to support the operation. The IFRC's country cluster office for the Southern Cone and its disaster management, finance and PMER teams will support the management of this DREF operation.

Logistics and supply chain

The PRC does not foresee the need to make any international purchases or import equipment from other countries. The PRC will conduct all procurement and procedures at the national level in accordance with the IFRC's standard procedures.

The PRC has made the following goods and supplies available for this operation:

Item	Available in the PRC's warehouse
Cleaning kits	173
Tool kits	49
Pliers	14
Hammers	14
Saws	17
Blankets	97

Tarpaulins	28
Personal hygiene kits	260

Information technologies (IT)

The PRC has computers and telecommunications equipment available for the operation, and it will use ODK for data collection and beneficiary registration and Mega V for distributions.

Communications

The PRC will keep the affected population informed about the situation and the field assessments it is carrying out. The National Society will receive support from the Disaster Risk Management and Reduction Directorate's Press department.

The operation will include the following activities:

- In coordination with the PRC's and the IFRC's Communications Units, the National Society will issue press releases on this operation, which will be disseminated through its and the IFRC's social networks.
- Conduct a beneficiary satisfaction survey.

Security

The PRC possesses a document on National Security Policies and Procedures and field intervention, which it will use as a reference document during this operation.

There are no significant security problems in the targeted area. Those that exist are related to the deployment of PRC volunteers and the resources for the implementation of the operation's the activities.

Planning, monitoring, evaluation and reporting

The project will include the following PMER mechanisms:

- An Operations Update report 30 days after the start of operation.
- A beneficiary satisfaction survey.
- A portfolio of instruments to validate data and as sources of verification.
- A monitoring mechanism to track indicators and activities throughout the operation.
- A digitized database of vetted verification sources.
- A final DREF report.

The IFRC's regional disaster management coordinator for South America (based in Lima, Peru) and its finance senior officer (based in Buenos Aires, Argentina) will conduct visits to the field. The PRC's PMER Unit will ensure that the National Society conducts monitoring visits to the field.

Administration and Finance

The PRC's Administrative Department will be responsible for managing in-country funds in accordance with the IFRC's standard procedures and with requirements and provisions specified in the Letter of Agreement to be signed by the National Society and IFRC for the implementation of the project.

The IFRC, through its Finance Department, will provide the necessary operational support to review and validate budgets and bank transfers and technical assistance to the National Society on procedures to justify expenditures and review and validate invoices to report on the operation's progress.

AP023	Emotional debriefing sessions provided to volunteers responding to the emergency																	
-------	--	--	--	--	--	--	--	--	--	--	--	--	--	--	--	--	--	--



Water, sanitation and hygiene

People targeted: 3,040

Male: 1,520

Female: 1,520

Requirements (CHF): 4,575

Needs analysis: Only some of the makeshift shelters that have been set up along the river banks have connections to the water supply network. It is necessary to support proper resource management and water use and carry out hygiene promotion activities.

Population to be assisted: At least 3,040 people in collective centres.

Programme standards/benchmarks: Sphere and national WASH standards

P&B Output Code	WASH Outcome 2: Immediate reduction in risk of waterborne and water-related diseases in targeted communities.	# of people who reduce the risk of waterborne and water related diseases (disaggregated by age and sex) Target: 3,040 people															
	WASH Output 2.1: Continuous assessment of water, sanitation, and hygiene situation is carried out in targeted communities.	# of communities in which assessments in water, sanitation and hygiene are conducted Target: 7 communities															
	Activities planned Weeks	1	2	3	4	5	6	7	8	9	10	11	12	13	14	15	16
AP026	Conduct initial assessments of the water, sanitation and hygiene situation in targeted communities																
AP026	Continuously monitor the water, sanitation and hygiene situation in targeted communities																
AP026	Coordinate with other WASH actors on target group needs and appropriate response																
AP026	Map and identify collective centres or community areas to be assisted with water management and hygiene promotion activities.																
	WASH Output 2.2: Hygiene promotion activities, which meet Sphere standards in terms of the identification and use of hygiene items, provided to target population.	# of households reached through water management and hygiene promotion activities															

P&B Output Code	Activities planned Weeks	Target: 608 households															
		1	2	3	4	5	6	7	8	9	10	11	12	13	14	15	16
AP030	Select target groups, key messages, and methods of communicating with beneficiaries (mass media and interpersonal communication).																
AP030	Develop water management and hygiene promotion activities during talks with women and recreational activities																



Livelihoods and basic needs

People targeted: 1,520

Male: 760

Female: 760

Requirements (CHF): 47,739

Needs analysis: Commercial activities in Asunción are functioning normally, except in affected neighbourhoods or in those near flooded areas. The flooding has most adversely impacted the income of self-employed workers engaging in activities such as recycling, fishing, small-scale trade and carpentry, gardening and cosmetology, among other areas. People who work in recycling lack the space to store their items, and small-scale merchants have lost their products and merchandise. Additionally, cattle and farm drowned or had to be sold by their owners.

Population to be assisted: Families from the affected areas in Asunción that have been displaced to collective centres and whose livelihoods have been lost or interrupted by the flooding. A total of 304 families will receive a one-time payment of USD\$150 through the CBI programme.

Programme standards/benchmarks: The PRC will follow for the considering Sphere Manual quality standards, the Movement's Fundamental Principles, the IFRC's Strategic Framework for the Inclusion of the Disabled, the IFRC's Policy on Gender and Diversity in Emergencies, the Movement's Code of Conduct; and other framework documents that ensure quality humanitarian assistance with dignity for all its livelihoods activities.

P&B Output Code	Livelihoods and basic needs Outcome 3: Communities, especially in disaster and crisis affected areas, restore and strengthen their livelihoods	<i># of assisted households that manage to meet their minimum basic food basket needs (including food and non-food security items)</i> Target: 304 households
	Livelihoods and basic needs Output 3.1: Households are provided with unconditional/multi-purpose cash grants to address their basic needs	<i># of families that receive CBI</i>

		Target: 304															
		# of people that receive CBI training Target: TBD															
Activities planned Weeks		1	2	3	4	5	6	7	8	9	10	11	12	13	14	15	16
AP081	Implementation of a feasibility analysis																
AP081	Beneficiary selection and registration																
AP081	Cash transfer distribution																
AP081	Post-distribution monitoring – beneficiary satisfaction survey																
AP081	Development and implementation of CEA strategy for cash transfers																
AP081	Cash-based intervention (CBI) training																
AP081	Rapid Assessment for Markets (RAM) training																

To implement the CBI, the PRC will evaluate the feasibility of utilizing the Visa cards that the IFRC uses to provide assistance to affected populations. The CBI will be unconditional to be able to cover the beneficiaries' needs, especially in terms of health, hygiene and shelter, among others.



Protection, Gender and Inclusion

People targeted 3,040

Male: 1,520

Female: 1,520

Requirements (CHF): 12,353

Needs analysis:

In support of the municipal government, the PRC is collecting data through a census in the collective centres. The PRC is analysing the data together with key actors, providing a clearer picture of the affected communities' PGI needs. Preliminary findings indicate that no safe spaces have been created for children, adolescents, women, the elderly and other vulnerable groups. During the assessment, concerns were raised about the possible increase in violence, particularly sexual violence, in the collective centres. Protocols to protect people from violence in the collective centres were created since the floods in 2014 and 2016; however, they have to be activated.

Population to be assisted: At least 3,040 people in the collective centres.

Programme standards/benchmarks: The Protection Panel's violence prevention strategy; the IFRC's minimum standard commitments (MSCs) on gender and diversity.

P&B Output Code	Inclusion and Protection Outcome 4: Communities identify the needs of the most vulnerable and particularly disadvantaged and marginalized groups, as a result of inequality, discrimination and other violations of their human rights and address their distinct needs.	# of vulnerable people prioritized and reached through this operation's actions Target: 3,040 people															
	Inclusion and Protection Output 4.1: PRC programmes improve equitable access to basic services, considering different needs based on gender and other diversity factors.	# of Areas of Focus that include a gender and diversity approach Target: 4 Areas of Focus (Health, Livelihoods, WASH, PGI)															
		# of families informed about PGI prevention Target: 608 families															
	Activities planned Weeks	1	2	3	4	5	6	7	8	9	10	11	12	13	14	15	16
AP031	Conduct an assessment of the affected population's specific needs based on criteria selected from the MSCs on gender and diversity																
AP031	Support sectorial teams on the inclusion of measures to address vulnerabilities specific to gender and diversity factors (including persons with disabilities) in their planning																
AP031	Georeferenced territorial mapping of affected areas, with location of local resources and capacities and collective centres in the area, to facilitate service access is developed																
AP031	Dissemination of mapping and key information to affected population																
P&B Output Code	Inclusion and Protection Output 4.2: Emergency response operations prevent and respond to sexual and gender-based violence (SGBV) and all forms of violence against children.	A violence prevention strategy implemented Target: 1 strategy															
	Activities planned Weeks	3 child-friendly spaces are established Target: 3 child-friendly spaces															
		1	2	3	4	5	6	7	8	9	10	11	12	13	14	15	16
AP034	Include messages on preventing and responding to SGBV in all community outreach activities																
AP034	Map and make accessible information on local referral systems for any child protection concerns																
AP034	Establish child-friendly spaces and community-based child protection activities, including educational ones																
AP034	Train municipal centre staff and other key actors in the violence prevention path and community-based support																

Before this operation was launched, the PRC distributed 100 protection and awareness-raising manuals on how to intervene in the event of violence to focal points in the affected communities, collective centres and the institutions that comprise the Municipal Centre 5 EOC. The PRC developed this information during the MDRPY018 Emergency Appeal Floods Operation's "Returning Home 2016" phase.

Budget

See [Annex](#)

Contact Information

For further information specifically related to this operation please contact:

In the Paraguayan Red Cross:

- Carlos Escobar Goiburú, President in functions of the Paraguayan Red Cross, email: presidencia@cruzroja.org.py

In the IFRC country cluster office in Buenos Aires:

- Alexandre Claudon, IFRC head of country cluster team for Argentina, Brazil, Chile, Paraguay and Uruguay; email: alexandre.claudon@ifrc.org

In the IFRC Americas regional office, Panama (+507 317-3050):

- Iñigo Barrena, acting head of Disaster and Crisis Prevention, Response and Recovery Department; email: inigo.barrena@ifrc.org
- Mauricio Bustamante, Head of the Regional Logistics Unit (RLU); email: Mauricio.bustamante@ifrc.org
- Paula Martes, Planning, Monitoring and Reporting Team Coordinator; email: paula.martes@ifrc.org
- Diana Medina, Communications Coordinator; email: diana.medina@ifrc.org

In Geneva

- Javier Ormeño, Operations Coordination Senior Officer for Disaster and Crisis (Prevention, Response and Recovery); email: javier.ormeno@ifrc.org

[Click here](#)

1. DREF budget [below](#)
 2. Map of affected areas [here](#)
 3. Click [here](#) to return to the title page
-

How we work

All IFRC assistance seeks to adhere to the Code of Conduct for the International Red Cross and Red Crescent Movement and Non-Governmental Organizations (NGO's) in Disaster Relief and the Humanitarian Charter and Minimum Standards in Disaster Response (Sphere) in delivering assistance to the most vulnerable.



The IFRC's vision is to inspire, encourage, facilitate and promote at all times all forms of humanitarian activities by National Societies, with a view to preventing and alleviating human suffering, and thereby contributing to the maintenance and promotion of human dignity and peace in the world

DREF OPERATION

11/30/2018

Paraguay Floods
MDRPY019

Budget Group	DREF Budget CHF
Shelter - Relief	0
Shelter - Transitional	0
Construction - Housing	0
Construction - Facilities	0
Construction - Materials	0
Clothing & Textiles	0
Food	0
Seeds & Plants	0
Water, Sanitation & Hygiene	0
Medical & First Aid	3,580
Teaching Materials	20,448
Utensils & Tools	0
Other Supplies & Services	0
Emergency Response Units	0
Cash Disbursements	55,935
Total RELIEF ITEMS, CONSTRUCTION AND SUPPLIES	79,963
Land & Buildings	0
Vehicles	0
Computer & Telecom Equipment	0
Office/Household Furniture & Equipment	0
Medical Equipment	0
Other Machinery & Equipment	0
Total LAND, VEHICLES AND EQUIPMENT	0
Storage, Warehousing	0
Distribution & Monitoring	249
Transport & Vehicle Costs	3,183
Logistics Services	502
Total LOGISTICS, TRANSPORT AND STORAGE	3,934
International Staff	23,870
National Staff	0
National Society Staff	6,664
Volunteers	6,676
Other Staff Benefits	0
Total PERSONNEL	37,209
Consultants	0
Professional Fees	0
Total CONSULTANTS & PROFESSIONAL FEES	0
Workshops & Training	4,625
Total WORKSHOP & TRAINING	4,625
Travel	8,255
Information & Public Relations	2,586
Office Costs	5,967
Communications	1,939
Financial Charges	2,560
Other General Expenses	0
Shared Office and Services Costs	0
Total GENERAL EXPENDITURES	21,308
Partner National Societies	0
Other Partners (NGOs, UN, other)	0
Total TRANSFER TO PARTNERS	0
Programme and Services Support Recovery	9,558
Total INDIRECT COSTS	9,558
TOTAL BUDGET	156,596

11 November 2018 Paraguay: Floods (MDRPY019) FL-2018-000419-PRY

