

DREF operation n° MDRPY011
GLIDE n° [DR-2012-000011-PRY](#)
30 January 2012

The International Federation of Red Cross and Red Crescent (IFRC) Disaster Relief Emergency Fund (DREF) is a source of un-earmarked money created by the Federation in 1985 to ensure that immediate financial support is available for Red Cross and Red Crescent emergency response. The DREF is a vital part of the International Federation's disaster response system and increases the ability of National Societies to respond to disasters.

332,099 Swiss francs have been allocated from the IFRC's Disaster Relief Emergency Fund (DREF) to support the Paraguayan Red Cross (PRC) in delivering immediate assistance to some 2,500 families (an estimated 12,500 persons). Unearmarked funds to repay the DREF are encouraged.

Summary: On 17 January 2012, the Paraguayan government decreed a state of food security emergency¹ after several months of drought, with levels of precipitations significantly below historical averages. As a result of the weather conditions, some 263,800 families suffered losses in their crops and will be in need of assistance for the next months.

In their auxiliary role to the government, the Paraguayan Red Cross will assist 2,500 small farmer families by providing food parcels to complement the diet of affected families for one month, and new seeds as well as technical assistance to prevent further deterioration of the current food insecurity situation.

This operation is expected to be implemented over three months, and will therefore be completed by 27 April 2012; a Final Report will be made available three months after the end of the operation (by 27 July 2012).

[<Click here for the DREF budget; here for contact details; here to view the map of the affected area>](#)



A damage and needs assessments team from the Paraguayan Red Cross (PRC) visited farms in Concepción to better assess the food insecurity situation. Source: PRC

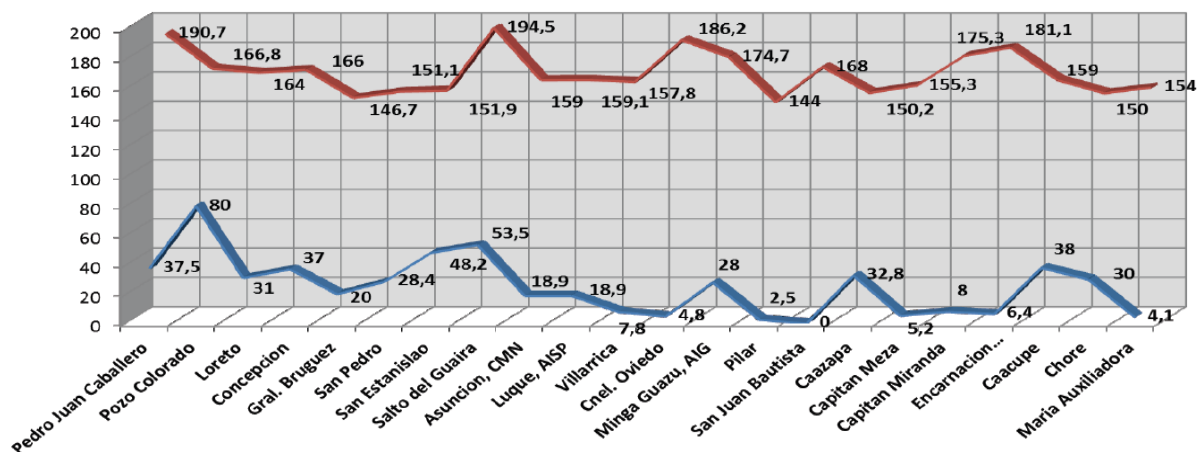
The situation

The environmental effects associated with La Niña weather phenomena, such as low water temperatures on the equatorial Pacific Ocean, have brought a disruption of rain patterns in South America. Whilst certain areas of Brazil are experiencing heavy rainfall, some areas of Paraguay are experiencing drought, with accumulated precipitation far below historical averages. As shown on the following graph, the San Juan

¹ *Estado de emergencia alimentaria* in Spanish.

Bautista district, in the department of Misiones, had 0mm of rain in December, while the historical average (based on the last 10 years) is of 168mm. Similarly, the district of Maria Auxiliadora, in the department of Caaguazú, has received 4.1mm compared to the historical average of 154mm. Based on the data registered thus far for January 2012, the drought continues with areas such as General Bruguez (Chaco region, Presidente Hayes department) receiving less than 8mm, significantly below the 107mm average. Country forecasts estimate that the period of drought could continue until early fall (South hemisphere).

Graph 1: Precipitation in millimetres in December 2011 (blue) vs. Historical average for the same month (red)



The area affected by the current drought is one of the most important agricultural regions of the country. As the following table indicates, some 263,800 families suffered losses in their crops, of which almost 200,000 families are small producers. The Risk Management Unit of the Ministry of Agriculture and Livestock (Ministerio de Agricultura y Ganadería - MAG) reports that the food crops with the highest percentage of losses across the country are corn, beans and cassava. However, the Paraguayan agribusiness also suffered significant losses, particularly the soy and sesame agribusiness crops.

In terms of regional losses of food crops, the Itapúa department is the most severely affected, with 75 per cent of crops lost, followed by Paraguari (70 per cent), and Alto Paraná and Canindeyú (with 40 and 60 per cent respectively). The following table shows the level of affectation on the departments of the western region of the country:

Department	Farms up to 50 ha	Farms from 1 to 10 ha	% lost of Cassava	% lost of Corn	% lost of Beans
Concepción	16,337	11,639	45%	45%	30%
San Pedro	44,336	35,707	45%	45%	30%
Cordillera	16,349	12,724	40%	45%	30%
Guaira	16,963	13,551	50%	50%	30%
Caaguazú	37,608	29,919	40%	45%	30%
Caazapá	22,100	17,506	50%	45%	30%
Itapúa	31,210	22,231	50%	70%	30%
Misiones	8.618	6,142	50%	60%	30%
Paraguari	22,781	17,734	45%	50%	25%
Alto Paraná	17,545	12,407	48%	65%	30%
Central	5,991	3,564	45%	45%	30%
Ñeembucú	6,314	3,538	45%	45%	30%
Amambay	3,807	2,535	60%	45%	25%
Canindeyú	13,843	9,826	45%	55%	30%

TOTAL in the western region of Paraguay	263,802	199,023	47%	51%	28%
--	----------------	----------------	------------	------------	------------

Given the current situation, the Paraguayan government decreed a state of food security emergency on 17 January 2012. The decree, with duration of three months, designates the Ministry of Agriculture and Livestock - MAG as the main coordinating institution during the emergency.

The MAG organized a meeting with farmer's organizations to identify and coordinate the type of assistance to be provided to affected families. During the meeting, a proposal was developed with the objective to:

- Create a fund to support 245,000 families (indigenous and small farmers)
- Provide seeds and tools to affected families
- Provide food parcels for a reasonable period
- Refinance debts and freeze interests.

The MAG estimates that aid would have to be provided to some 200,000 families whose farms have less than 10 hectares. Approximately 26,000 of these families are indigenous.

Coordination and partnerships

The National Emergency Secretariat (Secretaria de Emergencia Nacional, SEN) activated the Extended Emergency Operation Centre (EOC) on 24 January, which includes different organizations as well as governmental offices, to better coordinate the response alongside MAG. At the moment, the SEN is organizing a team to conduct damage and needs assessments integrated by all actors involved in the response. The MAG will be in charge of distributing seeds, while the SEN will concentrate its efforts to assist with food parcels and water. During these coordination meetings, the MAG solicited to the Paraguayan Red Cross to support with the distribution of seeds and food parcels as other organizations will be supporting with projects to improve access to water.

Furthermore, the Paraguayan Red Cross is assessing the possibility of expanding the scope of its support through the collaboration of other partners.

Red Cross and Red Crescent action

The PRC, through its National Emergency Operation Centre (NEOC) is monitoring the development of the emergency and updating information in the Disaster Management Information System (DMIS) based on the data collected at the branch level. The National Society has produced 14 situational reports. Volunteers and staff at the regional level are also supporting the installation of regional EOCs and are coordinating the mobilization of resources with other actors.

After establishing a direct line of communication with the SEN and MAG, the National Society designed their plan of action based on the experience gathered on previous similar operations. Moreover, the PRC has shared with the SEN and MAG a copy of the new Minimum Standards in Disaster Response (Sphere) Manual to guide the integrated response to the emergency.

At the moment, four teams are completing damage and needs assessments in coordination with SEN and MAG officials in the departments of Ñeembucú, Concepción, San Pedro and Canindeyú. These four departments were chosen due to their high vulnerability to natural disasters and, in the case of Canindeyú, for the indigenous population inhabiting the area.

The needs

The National Society, in coordination with MAG and SEN, has identified the most immediate needs for the short term to be: distribution of safe water, food items and distribution of seeds for immediate use and planting. The PRC will be supporting the government with the distribution of food parcels and seeds to avoid further deterioration of food insecurity. Other organizations will be supporting the government to provide access to water.

Selection of people to be reached: in response to the request made by the Paraguayan government, the PRC will reach 2,500 families (12,500 persons) from four districts of the Canindeyú department. This

represents about 25 per cent of the affected population in Canindeyú, and about 1.3 per cent of affected population across the country.

Districts in Canindeyú	No. of affected families (farms of 1 to 10 ha.)	No. of families to be reached
Saltos Del Guaira	40	0
Curuguaty	3,043	0
Ygatimi	1,646	509
Ypejhu	637	637
Corpus Cristhi	854	854
Itanara	94	0
Capitan Caballero Alvarez	590	0
Katuete	64	0
La Paloma	85	0
Nueva Esperanza	345	0
Yasy Kañy	2,558	500
Total CANINDEYU	9,956	2,500

All selected families are small farmers (with less than 10 hectares of land) identified through MAG's rapid assessments as affected by the current drought. Priority is given to vulnerable groups such as indigenous families.

The proposed operation

The PRC will assist 2,500 small farmer families in Canindeyú to complement their diet for one month with a food parcel, and distribution of seeds and training.

Food security and livelihoods
<p>Outcome: Assist 2,500 of the most vulnerable farmer families in the department of Canindeyú with humanitarian aid consisting of supplementary food items and seed kits.</p> <p>Output 1: 2,500 families received one food parcel of 34kg to complement their diet for one month Output 2: 2,500 families receive one seed kit and training to support the planting of one hectare of land.</p> <p>Activities planned:</p> <ul style="list-style-type: none"> • Complete more detailed damage and needs assessments on selected districts, with support of an agronomist. • Coordinate with governmental authorities, at the national and municipal level. • Coordinate with community leaders. • Develop a beneficiary targeting strategy and registration system to deliver intended assistance. • Select suppliers. • Distribute food parcels and seed kit to small farmers. • Provide technical assistance to affected families (to be conducted by the agronomist). • Monitor and evaluate the relief activities and provide reporting on relief distributions.

The National Society shared the contents of its standard food parcel with the governmental agencies leading the emergency response. After analyzing the contents and cost of the parcel suggested by the PRC, the government decided to modify it and reduce it to a packet of approximately 34kg as most families have access to other food sources, particularly those of animal origins. During an EOC meeting, all organizations agreed on a standard food parcel to be distributed across the country to avoid conflicts between communities or departments. Therefore, the National Society will distribute food parcels that contain rice, flour, noodles, sugar, beans, salt, mate and oil.

	Requirements (grams/person /day)	Energy (Calories / gr.)	Energy- kilocalories (person /day)	Quantity in kg (for 30 days)
Rice	45g	2,5cal	112.5kcal	5kg
Flour	30g	3,5cal	105kcal	5kg
Noodles	30g	3,5cal	105kcal	5kg
Sugar	25g	4cal	100kcal	5kg
Beans	45g	2,4cal	108kcal	5kg
Salt	12g	0cal	0kcal	1kg
Mate	n/a	n/a	n/a	3kg
Oil	25g	8cal	200kcal	5kg
TOTAL			730.5kcal	34kg

The PRC will complete one distribution of food parcels to support families for one month. However, these families will receive support for three months, as the government will assist with the next two distributions.

The kit of seeds that will be distributed by the PRC was designed by MAG and it includes the following:

Type of seed	Quantity (kg/g)
Corn	10kg
Beans	2kg
Cabbage	5g
Carrots	5g
Onion	5g
Spring onion/scallion	5g
Parsley	5g
Squash	10g

The quantity of corns seeds distributed should allow for the planting of three-quarters hectares, while the beans will suffice for about 2,000 square metres. All seeds will be planted immediately to make the most of the planting conditions created by the small amount of rain that have fallen on the last days of January 2012. Families should be able to harvest in approximately three months.

Contact information

For further information specifically related to this operation, please contact:

- **Paraguayan Red Cross:** Luis Díaz de Bedoya, president of the Paraguayan Red Cross, phone: 59521-222-797; email: crppcia@uninet.com.py
- **IFRC regional representation:** Gustavo Ramirez, regional representative for the Southern Cone and Brazil; phone: +541 1495 17420; email: gustavo.ramirez@ifrc.org

- **IFRC Americas zone office:** Jorge Zequeira, Pan American Disaster Response Unit (PADRU) coordinator; phone: + 507 316 1001; fax: + 507 316 1082; and email: jorge.zequeira@ifrc.org.
- **In Geneva:** Pablo Medina, operations quality assurance senior officer; phone: + 41 22 730 4381; fax: + 41 22 733 0395; and email: pablo.medina@ifrc.org

**For Performance and Accountability
(planning, monitoring, evaluation and reporting enquiries)**

- **In the Americas zone office:** Jane Grimshaw, PMER manager; phone: +507.317.3050; email: jane.grimshaw@ifrc.org



Click here

1. DREF budget **below**
2. Click **here** to return to the title page

How we work

All IFRC assistance seeks to adhere to the [Code of Conduct for the International Red Cross and Red Crescent Movement and Non-Governmental Organizations \(NGOs\) in Disaster Relief](#) and the [Humanitarian Charter and Minimum Standards in Disaster Response \(Sphere\)](#) in delivering assistance to the most vulnerable.

The IFRC's vision is to inspire, encourage, facilitate and promote at all times all forms of humanitarian activities by National Societies, with a view to preventing and alleviating human suffering, and thereby contributing to the maintenance and promotion of human dignity and peace in the world.

www.ifrc.org
Saving lives, changing minds.



The IFRC's work is guided by *Strategy 2020* which puts forward three strategic aims:

1. Save lives, protect livelihoods, and strengthen recovery from disaster and crises.
 2. Enable healthy and safe living.
 3. Promote social inclusion and a culture of non-violence and peace.
-

DREF OPERATION

30/01/2012

MDRPY011 Paraguay Drought

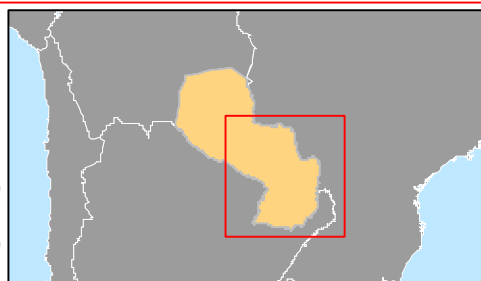
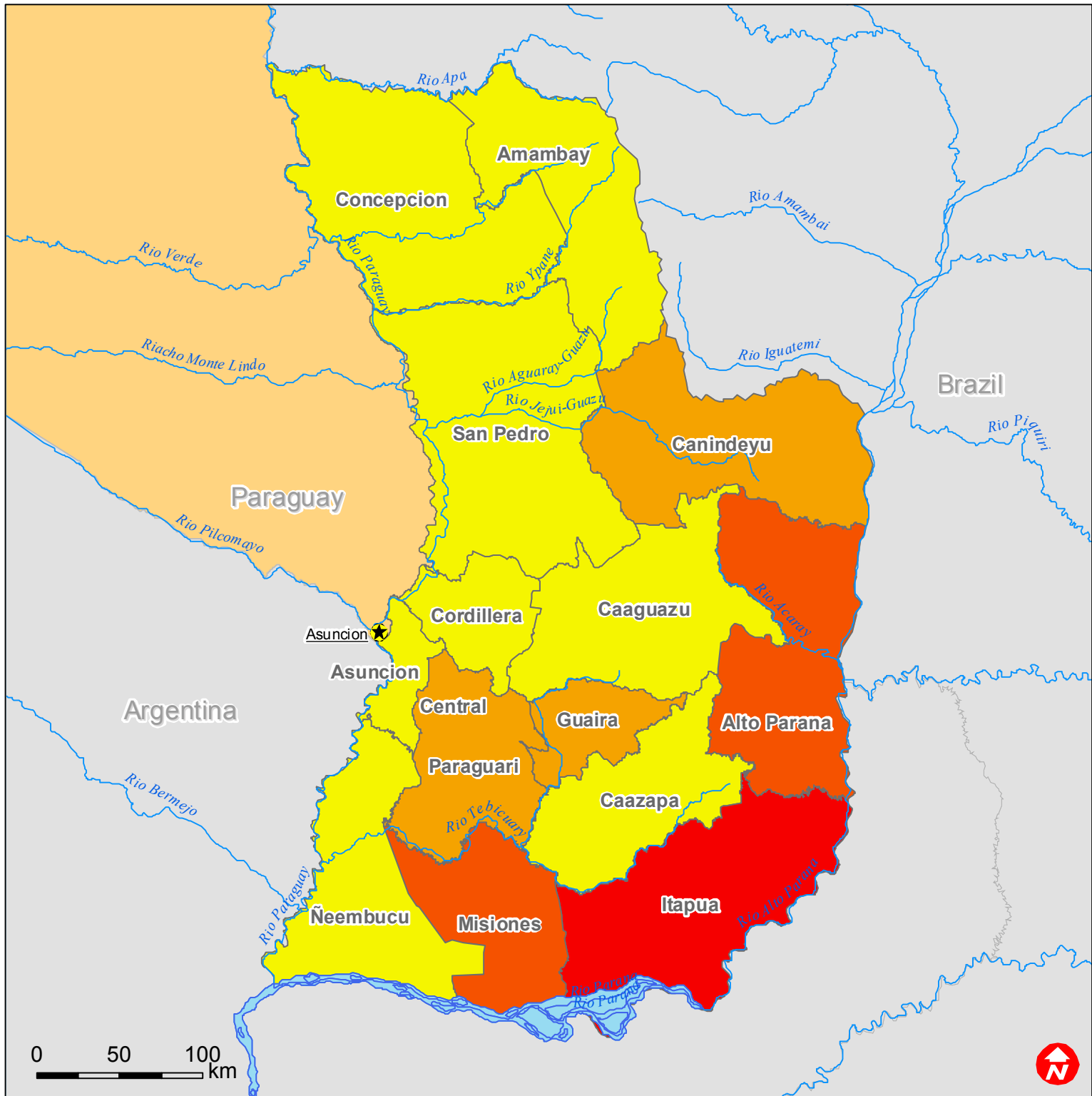
Budget Group	DREF Grant Budget CHF
Shelter - Relief	
Shelter - Transitional	
Construction - Housing	
Construction - Facilities	
Construction - Materials	
Clothing & Textiles	
Food	156,250
Seeds & Plants	114,375
Water, Sanitation & Hygiene	
Medical & First Aid	
Teaching Materials	
Ustensils & Tools	
Other Supplies & Services	
Emergency Response Units	
Cash Disbursements	
Total RELIEF ITEMS, CONSTRUCTION AND SUPPLIES	270,625
Land & Buildings	
Vehicles Purchase	
Computer & Telecom Equipment	
Office/Household Furniture & Equipment	
Medical Equipment	
Other Machinery & Equipment	
Total LAND, VEHICLES AND EQUIPMENT	0
Storage, Warehousing	
Distribution & Monitoring	6,975
Transport & Vehicle Costs	3,000
Logistics Services	
Total LOGISTICS, TRANSPORT AND STORAGE	9,975
International Staff	
National Staff	
National Society Staff	4,200
Volunteers	8,400
Total PERSONNEL	12,600
Consultants	4,750
Professional Fees	2,500
Total CONSULTANTS & PROFESSIONAL FEES	7,250
Workshops & Training	
Total WORKSHOP & TRAINING	0
Travel	4,100
Information & Public Relations	1,850
Office Costs	1,250
Communications	1,000
Financial Charges	3,180
Other General Expenses	
Shared Support Services	
Total GENERAL EXPENDITURES	11,380
Programme and Services Support Recovery	20,269
Total INDIRECT COSTS	20,269

TOTAL BUDGET

332,099



Paraguay: Drought



Crops lost

