

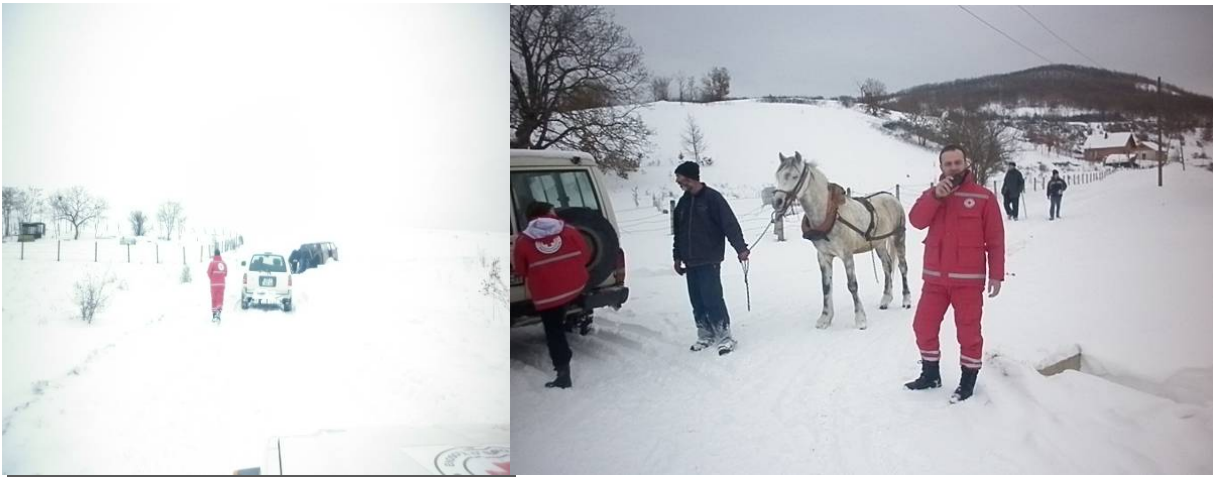
www.ifrc.org  
Saving lives,  
changing minds.

# Disaster relief emergency fund (DREF) Kosovo: Extreme winter conditions / Snowstorm

 International Federation  
of Red Cross and Red Crescent Societies

**DREF operation n° MDRKV005**  
**GLIDE n° CW-2012-000006-SRB**  
**17<sup>th</sup> February 2012**

The International Federation of Red Cross and Red Crescent (IFRC) Disaster Relief Emergency Fund (DREF) is a source of un-earmarked money created by the Federation in 1985 to ensure that immediate financial support is available for Red Cross and Red Crescent emergency response. The DREF is a vital part of the International Federation's disaster response system and increases the ability of National Societies to respond to disasters.



Snow storm is hampering assessment and access in many places.  
Distribution is helped by alternative means of transport such as horses.  
Photo: Kosovo RC

**CHF 204,963 has been allocated from the IFRC's Disaster Relief Emergency Fund (DREF) to support the Red Cross organisations in Kosovo in delivering immediate assistance to some 1,200 families (6,000 beneficiaries). Unearmarked funds to repay DREF are encouraged.**

**Summary:** Due to extremely low temperatures and windstorms followed by heavy snowfall starting in January this year, several municipalities in Kosovo have been heavily affected with many villages being cut off from road traffic and supply of goods. February 2012 brought even more snowfall and storms causing even an avalanche that resulted in nine fatalities with one person rescued and one still missing in the village of Restelica, Dragash municipality. The most affected municipalities are Dragash, Peja, Deqan, Gjakova, Istog, Skenderaj, Kamenica, Vushtrri, Mltrovica, Novo Brde, Viti, Gračanica, Rahovec, Podujeva, Klina, Prishtina, Kacanik, Prizren, Obiliq, Malisheva, Suhareka, Shtime, Strpce, Leposavic, Zubin Potok and Zvečan. There are shortages of food and other essential goods, as the population was not prepared for such a harsh winter with an extreme weather lasting more than three weeks. The situation is complicated by frequent electricity cuts as the power supply infrastructure is unable to satisfy the extreme demand. The communication with many villages remains hampered due to inaccessibility and electricity/communication cuts. Approximately 3,800 families (19,000 people) are affected, and Red Cross organizations estimate that 1,200 families need immediate assistance in food and non food items.

This operation is expected to be implemented over three months, and will therefore be completed by 16<sup>th</sup> May 2012; a Final Report will be made available three months after the end of the operation (by 16<sup>th</sup> August 2012).

[<click here for the DREF budget; here for contact details; here to view the map of the affected area>](#)

## The situation

Due to the extremely low temperatures and windstorm followed by heavy snowfall starting in January, several municipalities in Kosovo have been heavily affected with many villages being cut off from road traffic and the supply of goods. February brought even more snowfall and storms, causing even an avalanche that resulted in 9 fatalities with one person rescued and one still missing in the village of Restelica, Dragash municipality. The most affected municipalities are Dragash, Peja, Deqan, Gjakova, Istog, Skenderaj, Kamenica, Vushtrri, Mltrovica, Novo Brde, Viti, Gračanica, Rahovec, Podujeva, Klinë, Prishtinë, Kacanik, Prizren, Obiliq, Malisheva, Suhareka, Shtime, Strpce, Leposavić, Zubin Potok and Zvečan. There are shortages of food and other essential goods as the population was not prepared for such a harsh winter with an extreme weather lasting for more than three weeks. The situation is complicated by frequent electricity cuts as the power supply infrastructure is unable to satisfy the extreme demands. The communication with many villages remains hampered due to inaccessibility and electricity/ communication cuts.

According to the weather forecast, more snow is expected in the mountainous areas and snowfall will continue until the end of the week. The snowfall intensity will be weaker, but the temperatures will remain low. Next week, according to the forecast, the temperatures are expected to rise accompanied by strong winds. This may result in the quick melting of the snow, which would increase the risks of floods and avalanches.

The Ministry of Education, Science and Technology decided to suspend the work of primary, secondary and higher education institutions, and this is the second week that all schools in Kosovo have been on a temporary break until next week.

## Coordination and partnerships

The Red Cross of Kosova is part of the state disaster response mechanisms and therefore they are participating in all emergency meetings for planning the response to the current emergency. The Red Cross of Kosova is also participating in the local level meetings organized by the municipal disaster management department, and all activities will be carried out in coordination with them.

In Restelica village that was blocked by the avalanche the authorities and civil protection units were engaged in the search and rescue operation. Also security forces, police and fire brigades were participating to provide the needed assistance to the people affected. The Directorate for Civil Protection, Kosovo Police and Fire Brigade are clearing the roads from the snow in the cities. According to the information available so far, ten families were evacuated in Gjakova Municipality. The damages caused by the snow have endangered the livelihood of four families in Peja municipality by causing damages to the roofs of their houses. Many people are removing snow from their houses' roofs in order to avoid damages. Also in Podujeva the roof of one family's house is heavily damaged. There are still hundreds of villages that are completely inaccessible.

The International Federation of the Red Cross/ Red Crescent Societies and the Red Cross organizations in Kosovo will closely cooperate in the response to this emergency. Also close coordination will be maintained with the authorities at both local and national level. The operation will be coordinated by the Red Cross of branch secretaries in their areas of responsibility. Red Cross volunteers will be responsible for delivering the emergency assistance.

## Red Cross and Red Crescent action

In response to the extreme weather that set on in January 2012, the Red Cross organisations in Kosovo have requested a DREF allocation of CHF 148,635 to support 700 families. The operation started in mid-January 2012. Until now all the Red Cross branches in the affected areas had completed the distribution of 700 food parcels, 2,800 blankets and 700 plastic sheets among the beneficiaries. Also firewood has been delivered to 260 families out of the 400 targeted ones.

The weather situation, the amount of snow and the low temperatures continued throughout February, all over Kosovo, thereby affecting even more municipalities. The Red Cross organizations with their volunteers started making an assessment of the affected areas in their respective municipalities. The assessment has been hindered by difficulties to access all the affected areas due to the roads being blocked by snow. Still, efforts are being made to gather the necessary information in order to initiate an appropriate response. The International Federation Office in Kosovo has been in constant contact with the local Red Cross organizations.

The Red Cross organisations in Kosovo activated their disaster response teams in order to assess the situation and respond accordingly. As reported by them from the field, many villages are buried under the snow reaching 2 metres in height. In many mountainous areas, Red Cross disaster response teams were not

able to reach the villages because trying to do so would have meant risking their lives. Reserves of the families living in these blocked areas are shrinking, and there are requests to assist them with food parcels, hygiene parcels, blankets, stoves, and firewood. The majority of the affected villages are situated in the rural and poorer areas of Kosovo, and the emergency situation represents an additional factor in deteriorating their already difficult situation.

Some Red Cross of Kosova branches are trying by all means to access the blocked settlements in order to provide at least some assistance. At present 135 food parcels and 270 hygiene parcels donated by the Albanian Red Cross are being distributed (the latter given out two parcels per family as the parcels are small). Additional 280 food parcels that have been donated by the US Church Organization to the Red Cross of Kosova for current emergency are in the distribution process. The Red Cross of Kosova was also informed that the Ministry of Trade and Industry will donate some cash for purchasing aid to be distributed to the most vulnerable by RCK. Together with other bilateral donations this will be used for purchasing additional relief items for the affected families. Due to the inaccessible areas, the Red Cross of Kosova is in contact with other stakeholders in order to use motor skis.

In the northern part of Kosovo, in the municipalities of Leposavic, Zubin Potok, Zvecan and Mitrovica, the needs are mainly for firewood and blankets since the Red Cross of Kosovo and Metohija distributed food and non food items recently from Russian and Serbian Government aid shipments.

So far 200 volunteers and 35 staff members have been engaged in the disaster response operation of the Red Cross organisations in Kosovo.

## The needs

According to the assessments from the branches, food parcels, hygiene parcels, blankets, shovels, boots, and firewood for heating are pinpointed as immediate needs. The total number of the affected families is 3,800. However, the Red Cross is requesting to assist 1,200 of the most vulnerable families through this operation.

The Red Cross organizations are planning to assist the most affected people in the following branches: Dragash (100 families); Peja (200 families); Decan (115 families); Skenderaj (67 families); Vushtrri (100 families); Mitrovica (100 families); Novo Brde (60 families); Podujeve (20 families) and Prishtina (60 families); Novo Brdo (30 families); Kamenica (20 families); Viti (20 families); Gracanica (30 families); Rahovec (10 families); Peja (18 families); Istog (31 families); Vucitrn (30 families) and Strpce (39 families). Also in the north: Leposavic (50 families); Zubin Potok (40 families); Zvecan (40 families); Mitrovica (20 families).

The table below lists the needs of the 1,200 most vulnerable families.

Item	No. of units
Food (family food parcel containing wheat flour, cooking oil, sugar, pasta, rice, beans, potatoes, onion and salt)	1,050
Family hygiene parcels	1,050
Blankets (two pieces per family)	2,400
Firewood for 325 families	750 cubic metres
Boots	700 pair
Shovels	700 pcs

Through this DREF allocation, the needs of 1,050 families will be covered with food parcels and hygiene parcels. 135 food parcels and 135 hygiene parcels have been donated by the Albanian Red Cross and distributed to 135 families through this operation. These items will be replenished to the Red Cross organisation emergency stocks. The needs of the remaining families will be covered from contributions received from other donors.

## The proposed operation

Relief distributions (food and basic non-food items)
<b>Objective: Providing emergency assistance (basic food and non-food items) for 1,200 families (approximately 6,000 people) during a four month period (distribution will be done once for basic food and once for non-food items)</b>
<b>Output: The nutritional and winterisation/health needs of 1,200 families/6,000 people are met over this period during difficult winter situation and snow-blocked homes</b>

**Activities planned:**

- Preparation of final beneficiary lists.
- Preparation of distribution plan.
- Procurement of emergency items in Kosovo.
- Distribution of emergency items by RC branches and their volunteers according to the prepared beneficiary lists.
- Coordination with local emergency departments and social welfare authorities.
- Monitoring and reporting.

Content of family food parcel	Units	Quantity
White flour	kg	25
Cooking oil	litre	3
Sugar	kg	3
Pasta	kg	1
Rice	kg	3
Beans	kg	3
Potato	kg	1
Onion	kg	1
Salt	kg	1

Content of family hygiene parcel	Units	Quantity
Washing powder	kg	6
Sanitary napkins	package	1
Toilet soap	pcs	4
Shampoo	litre	1
Toothpaste	pcs	2
Toothbrush	pcs	2
Toilet detergent	litre	1
Dishwashing detergent	litre	1

At the end of operation, two workshops will be organized for the main branch RC disaster response teams of the Red Cross organizations for lessons learned and experience shared during the operation.

The Red Cross organizations in Kosovo will monitor the progress and provide the necessary technical expertise, in close cooperation with the IFRC Office in Kosovo. Weekly operation updates will be sent to the IFRC Europe Zone office in Budapest. The IFRC Europe Zone office will conduct a monitoring visit to the field during the operation to follow-up on the progress of the implemented activities.

Visibility of the Red Cross volunteers will be ensured during the operation through the local media.

---

## Contact information

**For further information specifically related to this operation please contact:**

- **IFRC Office in Kosovo:** Shafiquzzaman Rabbani, Head of Office, phone: +381 38 241 518; email: [shafiquzzaman.rabbani@ifrc.org](mailto:shafiquzzaman.rabbani@ifrc.org)
- **IFRC Europe Zone:** Alberto Monguzzi, Disaster Management & Shelter; office phone: +36 1 8884 500; email: [alberto.monguzzi@ifrc.org](mailto:alberto.monguzzi@ifrc.org)
- **IFRC Head Office:** Christine South, Operations Support, Phone: +41.22.730.4529, email: [christine.south@ifrc.org](mailto:christine.south@ifrc.org)



**Click here**

1. To see the DREF operation Budget [below](#)
2. To see the Map of the affected area [below](#)

3. [here](#) to return to the title page

---

## How we work

All IFRC assistance seeks to adhere to the Code of Conduct for the International Red Cross and Red Crescent Movement and Non-Governmental Organizations (NGO's) in Disaster Relief and the Humanitarian Charter and Minimum Standards in Disaster Response (Sphere) in delivering assistance to the most vulnerable.

The IFRC's vision is to inspire, encourage, facilitate and promote at all times all forms of humanitarian activities by National Societies, with a view to preventing and alleviating human suffering, and thereby contributing to the maintenance and promotion of human dignity and peace in the world.

[www.ifrc.org](http://www.ifrc.org)

**Saving lives, changing minds.**



The IFRC's work is guided by Strategy 2020 which puts forward three strategic aims:

1. Save lives, protect livelihoods, and strengthen recovery from disaster and crises.
  2. Enable healthy and safe living.
  3. Promote social inclusion and a culture of non-violence and peace.
-

# DREF OPERATION

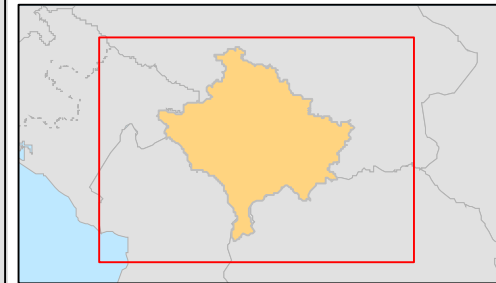
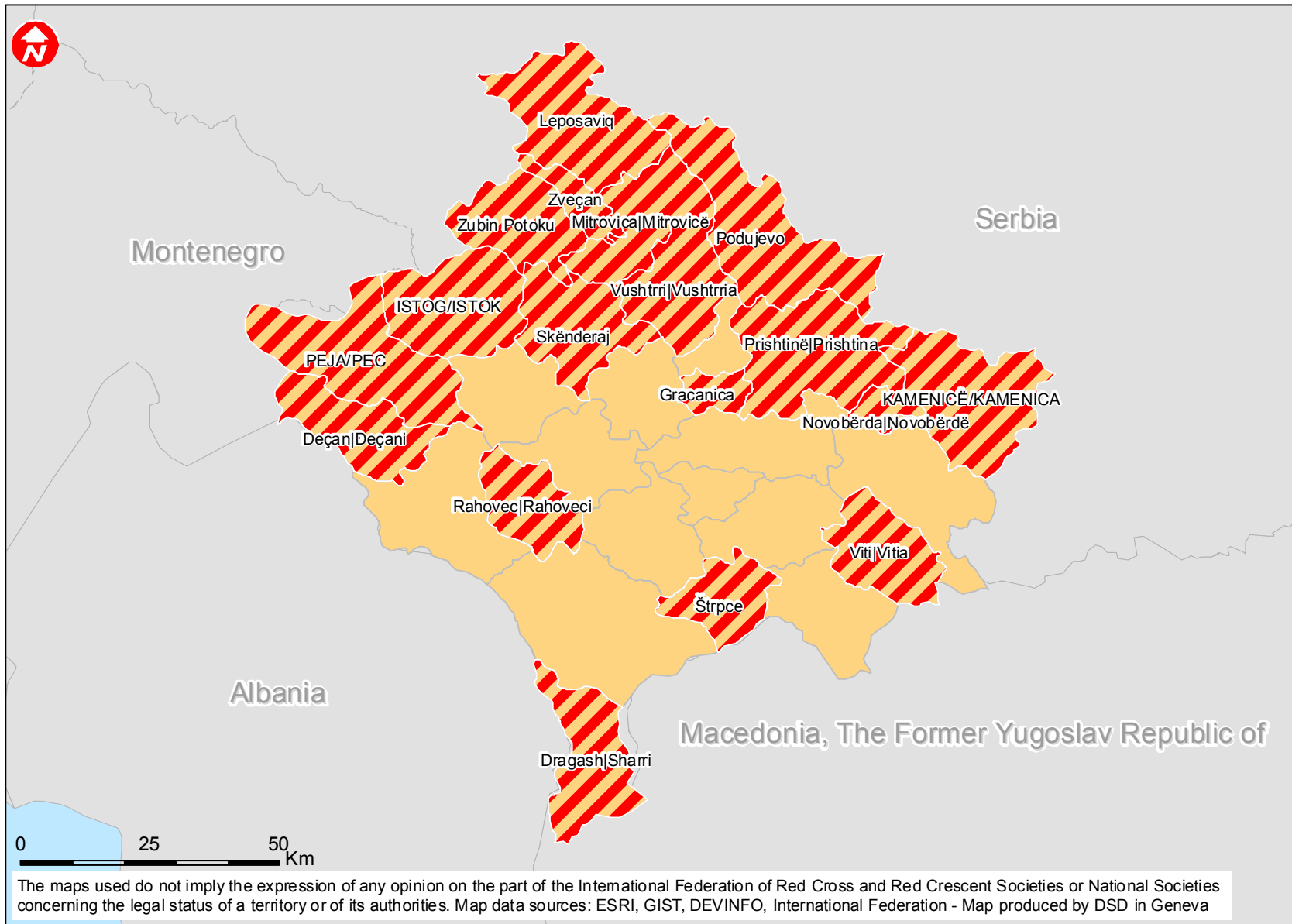
15/02/2012

MDRKV005 Kosovo: Extreme winter condition

<b>Budget Group</b>	<b>DREF Grant Budget CHF</b>
Shelter - Relief	
Shelter - Transitional	
Construction - Housing	
Construction - Facilities	
Construction - Materials	
Clothing & Textiles	29,510
Food	48,680
Seeds & Plants	
Water, Sanitation & Hygiene	23,261
Medical & First Aid	
Teaching Materials	
Ustensils & Tools	
Other Supplies & Services	59,670
Emergency Response Units	
Cash Disbursements	
<b>Total RELIEF ITEMS, CONSTRUCTION AND SUPPLIES</b>	<b>161,121</b>
Land & Buildings	
Vehicles Purchase	
Computer & Telecom Equipment	
Office/Household Furniture & Equipment	
Medical Equipment	
Other Machinery & Equipment	
<b>Total LAND, VEHICLES AND EQUIPMENT</b>	<b>0</b>
Storage, Warehousing	
Distribution & Monitoring	4,745
Transport & Vehicle Costs	5,538
Logistics Services	
<b>Total LOGISTICS, TRANSPORT AND STORAGE</b>	<b>10,283</b>
International Staff	2,500
National Staff	
National Society Staff	2,500
Volunteers	3,400
<b>Total PERSONNEL</b>	<b>8,400</b>
Consultants	
Professional Fees	
<b>Total CONSULTANTS &amp; PROFESSIONAL FEES</b>	<b>0</b>
Workshops & Training	5,000
<b>Total WORKSHOP &amp; TRAINING</b>	<b>5,000</b>
Travel	
Information & Public Relations	650
Office Costs	3,500
Communications	2,000
Financial Charges	
Other General Expenses	
Shared Support Services	1,500
<b>Total GENERAL EXPENDITURES</b>	<b>7,650</b>
Programme and Supplementary Services Recovery	12,509
<b>Total INDIRECT COSTS</b>	<b>12,509</b>
<b>TOTAL BUDGET</b>	<b>204,963</b>



# Kosovo: Extreme winter condition



- Targetted branches
- Kosovo

The maps used do not imply the expression of any opinion on the part of the International Federation of Red Cross and Red Crescent Societies or National Societies concerning the legal status of a territory or of its authorities. Map data sources: ESRI, GIST, DEVINFO, International Federation - Map produced by DSD in Geneva