

www.ifrc.org
Saving lives,
changing minds.

Emergency Plan of Action (EPoA) Philippines: Low-pressure area 01W

 International Federation
of Red Cross and Red Crescent Societies

DREF n° MDRPH031	Glide n° EC-2019-000004-PHL
Date of issue: 18 January 2019	Expected timeframe: 1 month Expected end date: 18 February 2019
Category allocated to the of the disaster or crisis¹: Yellow	
DREF allocated: CHF 42,500	
Total number of people affected: TBD (estimated 1 million)	Number of people to be assisted: TBD ²
Host National Society presence: Philippine Red Cross (PRC) is the nation's largest humanitarian organization and works through 104 chapters covering all 31,421 administrative districts and major cities in the country. PRC has more than 1,700 staff at national headquarters and chapter levels, and approximately two million volunteers and supporters, of whom some 500,000 are active volunteers. At the chapter level a programme called Red Cross 143 is established that sees volunteers trained, equipped and in place at the community (barangay) level - enhancing the overall capacity of the National Society to prepare for and respond to disaster situations.	
Red Cross Red Crescent Movement partners actively involved in the operation: PRC is working with the International Federation of Red Cross and Red Crescent Societies (IFRC) in this operation. There are 10 Partner National Societies with presence in the Philippines (more details below).	
Other partner organizations actively involved in the operation: Government ministries and agencies including the National Disaster Risk Reduction and Management Council (NDRRMC), Department of Social Welfare and Development (DSWD), the Philippine Armed Forces, the Philippine National Police Force and Local Government Units are providing assistance to affected households. PRC has a formal role at the NDRRMC.	

A. Situation analysis

Description of the disaster

A low-pressure area (LPA) on the southwest Pacific (east of Mindanao) is currently moving towards the Philippines with maximum wind speed of 35 km/h according to the [Joint Typhoon Warning Center](#). The LPA is forecasted to intensify into a tropical depression as it continues its west-northwest track towards Mindanao land mass. The weather disturbance is expected to enter the Philippine area of responsibility (PAR) between 18 and 19 January and is also expected to bring moderate to heavy rain over north eastern Mindanao and then traverse central Visayas.

Based on the European Centre for Medium-Range Weather Forecasts (ECMWF) model, heavy rainfall (greater than 7.5 mm per hour) is currently expected over Caraga Region (Region XIII), Davao Region (Region XI) and Eastern Visayas (VIII). The weather disturbance is expected to make landfall over the southern part of Davao region and traverse north through Caraga, Eastern Visayas up to Bicol region.

¹ Based on the IFRC Secretariat's Operational Response Framework. This categorization implies that the response intervention is within the capacity of the National Society of an affected country to manage with resources available in-country. If requested, the IFRC Country Office may provide any necessary technical or management support to the National Society, and if required, the IFRC Regional Office may support the mobilization of regional disaster response tools, with Geneva supporting the allocation of Disaster Relief Emergency Funds (DREF).

² Mobilized NFIs can reach 1,500 families or 7,500 people

Caraga is particularly vulnerable as these are mountainous areas with river valleys and are susceptible to floods and landslides. The current landfall is forecasted for Caraga Region, Surigao del Sur Province located along the northeastern coast of Mindanao. Situated west is the Diwata Mountain Range, isolating the province from the rest of Mindanao.

Caraga is susceptible to landslides due to its rugged terrain, while the Agusan River Valley (the third largest river basin in the country, with a total drainage area of 11,937 square kilometres and an estimated length of 390 kilometres from its head origin in Compostela Valley) that stretches all the way to Davao, Butuan and Surigao makes the region prone to flash floods.

As the LPA moves closer, government authorities are likely to pre-emptively evacuate families living near the coast, riverbanks, landslide prone areas and other vulnerable places. The rain from the weather disturbance is expected to cause floods and landslides which is expected to cause casualties and damage to shelter, crops, livestock and livelihoods.

The NDRRMC is currently on standby and is sending advisories to the Local DRRMOs. The public will be warned against flooding, flash floods, and landslides once a clearer information on the weather disturbance will come.

Summary of the current response

Overview of Host National Society

PRC has been monitoring the low-pressure area since it was spotted by weather agencies. PRC will put its Operations Centre, which functions 24/7, on heightened alert once the low-pressure area enters PAR. In accordance with PRC SOP's NHQ has instructed Chapters to be ready to respond up to their required capacity to deliver assistance to affected communities with the basic services – welfare, first aid, etc. In addition, NHQ has made available their standard emergency response fund for Chapters forecast to be affected.

Chapters in likely affected areas have been informed of preparedness measures, while SOPs for preparedness and response are being undertaken by them as well as the National Headquarters. PRC chapters have also communicated with community volunteers (RC143) for information and to start implementing early warning measures as the LPA approaches. Red Cross Action Teams (RCAT and RCAT143) have also been alerted for possible emergency response.

PRC National Headquarters is preparing the deployment of assets, stocks and personnel to Mindanao to ensure immediate response and support to the chapter. National disaster response teams, emergency response units, welfare and health services personnel have also been alerted for possible deployment.

PRC are also currently responding to recent effects of Tropical Depression Usman (DREF) in the Bicol Region and are also providing early recovery support to those affected by Typhoon Mangkhut (Emergency Appeal) in Northern Luzon. This imminent crisis DREF was prepared as PRC's current resources has reached the threshold of available national resources, resulting on the trigger to request for additional support.

PRC provides updates to its in-country partners, including the IFRC Philippine country office which is supporting PRC in disseminating updates to the IFRC Asia Pacific Regional Office (APRO), Movement partners, and is coordinating with the Humanitarian Country Team. IFRC continues to closely coordinate with PRC and is ready to process possible request for support. The country office has also checked preparedness stocks and alerted its National Society staff and delegates, including an RDRT member in-country for possible deployment. In addition, the country office is also coordinating with the ICRC, including about possible security issues in the likely affected areas of Mindanao and eastern Visayas.

The IFRC APRO is coordinating the plans of PRC and the IFRC PH country office with other partners and throughout the secretariat. A regional shelter and settlements coordinator is also based in Manila and is providing support to the National Society and the country office.

Overview of Red Cross Red Crescent Movement in country

The PRC works with the IFRC, the International Committee of the Red Cross (ICRC) and 10 Partner National Societies in-country: American Red Cross, Australian Red Cross, Canadian Red Cross, Finnish Red Cross, German Red Cross, Japanese Red Cross Society, The Netherlands Red Cross, Norwegian Red Cross, Spanish Red Cross and Qatar Red Crescent Society.

Movement Coordination

The IFRC country office is supporting PRC in disseminating updates to Movement partners with in-country presence and coordinating with the APRO in Kuala Lumpur in accordance with the IFRC Secretariat's Emergency Response

Framework. IFRC country office is also coordinating with PNSs and remains in close contact with ICRC on any security-related considerations.

Overview of non-RCRC actors in country

Coordinating with the authorities

As auxiliary to the public authorities, PRC maintains a strong relationship with government bodies through participation or collaboration with (i) the National Disaster Risk Reduction and Management Council (NDRRMC); (ii) the provincial, municipal and barangay (village) disaster risk reduction and management councils; and (iii) the local government units defined in the Disaster Risk Reduction and Management Act from 2010. PRC participates in NDRRMC meetings and coordinates with the Department of Social Welfare and Development (DSWD), and Department of Health.

Inter-agency coordination

At country level, PRC and IFRC are observers to, and participate in, meetings of the Humanitarian Country Team (HCT) held both during disasters and non-emergency times. PRC and IFRC are involved in relevant government-led cluster information sharing, planning, and analysis at all levels while IFRC supports PRC coordination efforts through representation in other relevant clusters as required.

Needs analysis, targeting, scenario planning and risk assessment

Needs analysis

PRC NHQ are looking into deploying multi-sectoral assessment teams to augment the Chapters at risk, to support them to assess and respond to possible needs including WASH, emergency shelter, household NFIs, psychosocial support (PSS), restoring family links (RFL) and protection, gender and inclusion (PGI). The ongoing northeast monsoon rains will likely be enhanced by the low-pressure area and cause heavier than normal rainfall.

It should be noted that Mindanao has the poorest provinces in the country. A summary snapshot on some key statistics in Caraga and Eastern Visayas Regions prepared by OCHA is found in [Annex 1](#).

Beneficiary targeting

In its responses, PRC ensures that programmes are aligned with its own as well as IFRC's commitment to take into account gender and diversity, for example by targeting women-headed households, pregnant or lactating women, and men and boys made vulnerable by disasters; households with persons with disability, older people, those suffering from chronic illnesses, children-headed households, families with children under five years old, families that have not received any or sufficient assistance from the government or other organizations, those belonging to the socially vulnerable households and those who lack relevant resources to cope with the basic humanitarian needs on their own. These groups will be considered according to the level of impact.

Once beneficiaries are identified, each will be given a PRC beneficiary card with their and household members' names. The card will form the basis for recognition of bearers as beneficiaries of the PRC and during implementation PRC volunteers will countercheck if the names on the card are listed in distribution sheets. Upon receipt of any item or assistance, beneficiaries will sign award sheets or participating lists. With these records, cases of double-assistance or double-counting will be eliminated.

Scenario planning

Possible scenarios are:

Status	Effect/Needs	IFRC response
The weather disturbance will cause more damage than initially forecasted. The areas forecast to be affected have a history of floods, flash floods and landslides and are particularly susceptible to the high rainfall forecast.	Medium humanitarian needs	Full DREF/DREF top up to support relief activities targeting more households
There is increased impact due to floods, flash floods and landslides	Medium humanitarian needs	Emergency appeal to support relief activities for more households for a longer period and some early recovery activities
One or more weather disturbance makes landfall in the country, with additional areas impacted and more extensive damage in already affected communities	High humanitarian needs	An emergency appeal is launched to support relief and recovery activities for affected households

Operation Risk Assessment

Based on current analysis:

- There is medium to high security risk posed by armed groups in the possible areas to be affected in Northern Mindanao.

- There is increased risk of flooding, flash flooding and landslides due to continuous rain and if dams and river reservoirs are opened.
- Landslides could restrict access to areas for assessment and relief.
- There is risk to safety of staff and volunteers due to landslides, flash flood considering that Northern Mindanao is a mountainous area.

B. Operational strategy

Overall Operational objective:

This DREF allocation aims to position PRC and the IFRC system to respond to immediate needs that are highly likely to be caused by the upcoming low-pressure area.

1. This DREF allocation aims to support PRC for the deployment and prepositioning of PRC and IFRC personnel as well mobilization of equipment, preparedness stocks for up to 1,500 families to areas that are projected to be affected.
2. The allocation will support PRC assessments teams, and deployment and mobilisation of water search and rescue emergency response units team.
3. This allocation will also support preparations being done by PRC (mobilisation of assets and volunteers) in the possibility of a larger response, as well as for disease and outbreak prevention, and PSS activities.

Table1. Breakdown of items/teams/assets to be pre-positioned/deployed to the possible affected areas

Sector	Items/assets/team	Quantity
Assessment	Multi-sectoral composite teams	3 teams
DMS	Sleeping kit (2 each of blankets, mosquito nets and sleeping mats)	1,500 kits
	Hygiene kit	1,500 kits
	Jerry cans	1,500 kits
	Tarpaulin	1,500 kits
PRC ERU	Water search and rescue PRC ERU team	3 teams (15 people)

4. PRC will lead the response and this DREF directly contributes to the overall PRC plan of action.
5. The geographical coverage, by province, municipality and barangay, will be provided at a later date, informed by and based on assessment recommendations as more information becomes available.

The operation will be underpinned by a commitment to quality programming that involves:

1. Continuous and detailed assessments and analyses to inform the design and ongoing implementation of the programme.
2. Ongoing process of adjustments based on these assessments.
3. Adherence to protection, gender and inclusion measures.
4. Establishment of mechanisms to facilitate two-way communication with, and ensure transparency and accountability to, disaster-affected people, and highlighting the nature of communication and information as life-saving mechanism.
5. Management and delivery of the programme will be informed by appropriate monitoring and evaluation.
6. Market assessment will be integrated with the detailed assessment as cash-based interventions are being considered based on the needs and feasibility



Shelter

Requirements (CHF): (Expenses here are accounted under DRR section)

Needs analysis: At this time, IFRC is making an allocation from the DREF to support pre-landfall mobilization of Red Cross personnel, relief supplies and specialized equipment closer to areas that are likely to be affected. For affected people, replacement of damaged essential non-food items such as blanket, mosquito nets, sleeping mats and tarpaulins will be needed.

P&B Output Code	Shelter Outcome 1: Communities in disaster and crisis affected areas restore and strengthen their safety, well-being and longer-term recovery through shelter and settlement solutions	<i>7,500 people targeted/reached with safe and adequate shelter and settlement</i>																
	Shelter Output 1.1: Short, medium and long-term shelter and settlement assistance is provided to affected households	<i>7,500 households provided with emergency shelter and settlement assistance</i>																
	Activities planned	Week	1	2	3	4	5	6	7	8	9	10	11	12	13	14	15	16
AP005	Preposition non-food items to areas that are likely to be affected		x	x	x													
AP005	Coordination with relevant sectors, the government and other stakeholders		x	x	x													
AP005	Evaluation of the support provided		x	x	x													



Health

Requirements (CHF): 8,491

Needs analysis:

Based on previous experiences from this type of disaster, flooding and landslides were common due to constant rain and opening of dams and water basins. With this, there is a need to deploy ahead of time the search and rescue teams to support people. For displaced people who will most likely stay in evacuation centres, based on previous experience, there is a need for psychosocial first aid and support to lessen the feeling of distressed caused by the disaster.

P&B Output	Health Output 1.5: Psychosocial support provided to the target population	<i># volunteers mobilized for PSS activities</i> <i># of people assisted in First Aid</i> <i># of people provided with PSS</i>
-----------------------	--	--

Strategies for Implementation

P&B Output Code	Outcome S2.1: Effective and coordinated international disaster response is ensured	<i>% of operations where coordination mechanisms are optimized</i>																
	Output S2.1.1: Effective response preparedness and NS surge capacity mechanism is maintained	<i>1 of RDRT deployed and mobilized</i>																
	Activities planned	Week	1	2	3	4	5	6	7	8	9	10	11	12	13	14	15	16
AP046	Initial operational start up support implemented by IFRC for the national society		x	x	x													
P&B Output Code	Output S2.1.6: Coordinating role of the IFRC within the international humanitarian system is enhanced	<i>1 of coordination meetings with other stakeholders</i>																
	Activities planned	Week	1	2	3	4	5	6	7	8	9	10	11	12	13	14	15	16
AP049	IFRC country office supports PRC in coordinating with other humanitarian actors and relevant clusters on a regular basis		x	x	x													
P&B Output Code	Outcome S3.1: The IFRC secretariat, together with National Societies uses their unique position to influence decisions at local, national and international levels that affect the most vulnerable.	<i>IFRC and NS are visible, trusted and seen to be effective in the disaster response</i>																
	Output S3.1.1: IFRC and NS are visible, trusted and effective advocates on humanitarian issues	<i># of communications materials produced/published</i>																
	Activities planned	Week	1	2	3	4	5	6	7	8	9	10	11	12	13	14	15	16
AP053	Communications work of the PRC is supported by the IFRC country office and regional office in Kuala Lumpur		x	x	x													
P&B Output Code	Output S4.1.4: Staff security is prioritised in all IFRC activities	<i>Staff security is prioritised in all IFRC activities</i>																
	Activities planned	Week	1	2	3	4	5	6	7	8	9	10	11	12	13	14	15	16
AP066	IFRC country office security focal person provides updates to PRC and coordinates with PNSs and the ICRC		x	x	x													
AP066	All volunteers are insured under the MAAB scheme		x	x	x													

Logistics and Supply Chain

Logistics activities for the immediate support of this operation will aim to effectively manage the supply chain in accordance with the operation's requirements and aligned to IFRC's logistics standards, processes and procedures. The strong capacity of PRC logistics built over the last years and an experienced IFRC in-country logistics team is supporting the operation with managing supply chain of relief items and transport needs for this operation.

PRC/IFRC logistics teams is supporting the operation by deploying from PRC existing pre-positioned stocks from its Cebu warehouse, immediately required NFI's (blankets, mosquito nets, sleeping mats, hygiene kits, jerry cans and tarpaulins) for 1,500 HH to affected areas. Further, IFRC is deploying logistics officer to affected area to support with

the transportation, reception and storage of relief items as well as logistics is supporting programs on deploying necessary fleet required as well as rescue teams and its equipment's.

IFRC AP Operational Logistics, Procurement and Supply Chain Management (OLPSCM) in Kuala Lumpur will closely monitor the development of the situation together with the IFRC CO and OLPSCM regional logistics coordinator will stay stand by ready for immediate deployment, if required. Further OLPSCM will provide any technical logistics support that might be required.

Budget

DREF OPERATION

17/1/2019

MDRPH031 Low Pressure Area 01W

Budget Group	DREF Budget CHF
Medical & First Aid	4,500
Emergency Response Units	8,491
Total RELIEF ITEMS, CONSTRUCTION AND SUPPLIES	12,991
Distribution & Monitoring	4,245
Transport & Vehicle Costs	7,123
Logistics Services	8,000
Total LOGISTICS, TRANSPORT AND STORAGE	19,368
Volunteers	7,547
Total PERSONNEL	7,547
Programme and Supplementary Services Recovery	2,594
Total INDIRECT COSTS	2,594
TOTAL BUDGET	42,500

Reference documents



Click [here](#) for all emergency documents related to the Philippines.

Contact information

For further information specifically related to this operation please contact:

In Philippine Red Cross:

- Elizabeth Zavalla, acting secretary general; email: elizabeth.zavalla@redcross.org.ph
- Leonardo Ebajo, director for disaster management services; email: leonardo.ebajo@redcross.org.ph

In IFRC Philippine Country Office:

- Chris Staines, head of country office; phone: +63 998 585 0794; email: chris.staines@ifrc.org
- IFRC Philippine country office: Patrick Elliott, operations manager; +63 998 961 2140; email: patrick.elliott@ifrc.org

In IFRC Asia Pacific Regional Office, Kuala Lumpur:

- Alka Kapoor Sharma, acting deputy regional director; email: alka.kapoorsharma@ifrc.org
- Necephor Mghendi, Head of Disaster and Crisis Unit (DCPRR); email: necephor.mghendi@ifrc.org
- Johanna Arvo, Operations Coordinator; phone: +60 19 323 2647; email: johanna.arvo@ifrc.org
- Riku Ässämäki, Logistics Coordinator, Regional Logistics Unit; email: riku.assamaki@ifrc.org

In IFRC Geneva:

- Nelson Castano, Manager, operations coordination, email: nelson.castano@ifrc.org

For resource mobilization and pledges:

- **In IFRC Asia Pacific Regional Office:** Gaku Tsujita, acting resource mobilization in emergencies coordinator; email: gaku.tsujita@ifrc.org

For communications enquiries:

- **In IFRC Asia Pacific Regional Office:** Rosemarie North, Communications Manager; mobile: +60 12 230 8451; email: rosemarie.north@ifrc.org

For planning, monitoring, evaluation and reporting (PMER) enquiries:

- **In IFRC Asia Pacific Regional Office:** Siew Hui Liew, PMER manager; email: siewhui.liew@ifrc.org

How we work

All IFRC assistance seeks to adhere to the [Code of Conduct](#) for the International Red Cross and Red Crescent Movement and Non-Governmental Organizations (NGOs) in Disaster Relief and the [Humanitarian Charter and Minimum Standards in Humanitarian Response \(Sphere\)](#) in delivering assistance to the most vulnerable. The IFRC's vision is to inspire, **encourage, facilitate and promote at all times all forms of humanitarian activities** by National Societies, with a view to **preventing and alleviating human suffering**, and thereby contributing to the maintenance and promotion of human dignity and peace in the world.

The IFRC's work is guided by Strategy 2020 which puts forward three strategic aims:



Save lives,
protect livelihoods,
and strengthen recovery
from disaster and crises.



Enable **healthy**
and **safe** living.



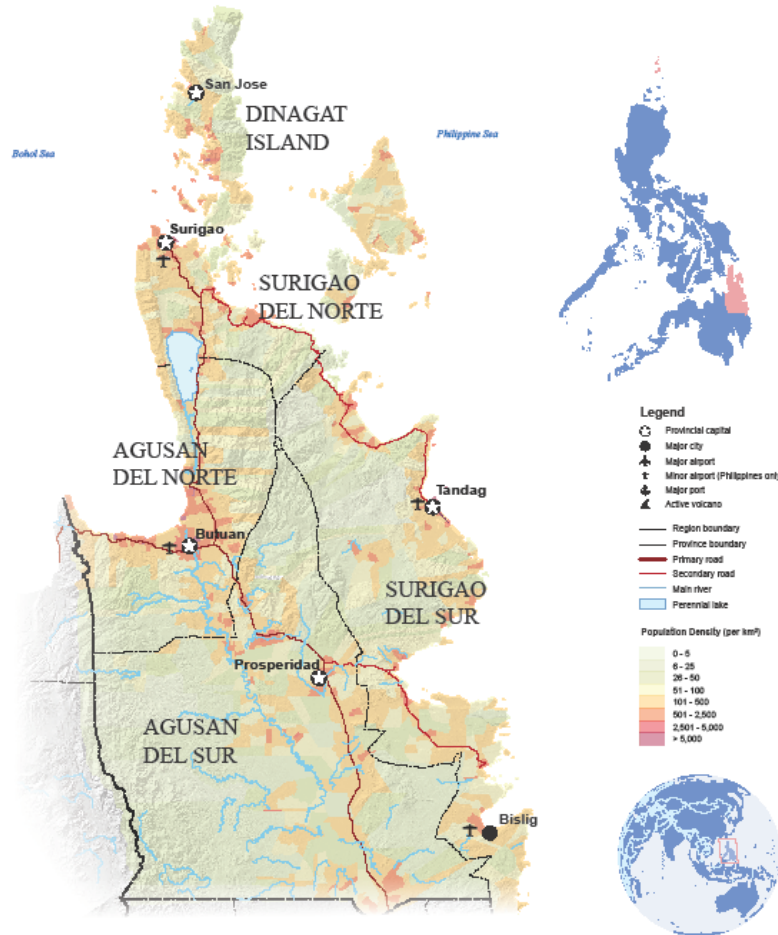
Promote **social inclusion**
and a culture of
non-violence and **peace**.

Annex I

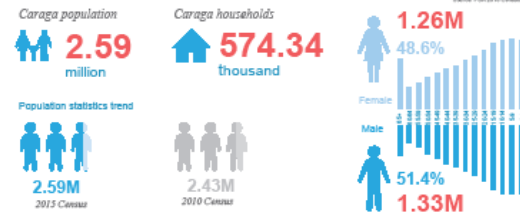
Philippines: Region XIII (Caraga) Profile



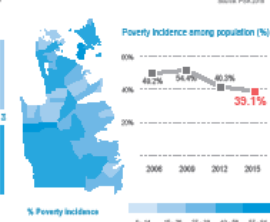
Region XIII (Caraga) is located in the northeastern section of Mindanao. It is bordered on the north by the Bohol Sea on the south by Region XI, on the west by Region X and on the east by the Philippine Sea and the Pacific Ocean.



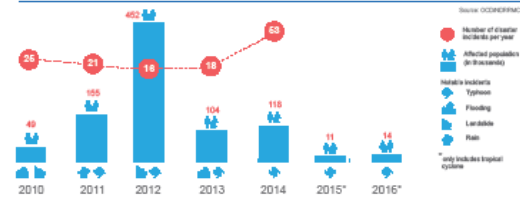
POPULATION



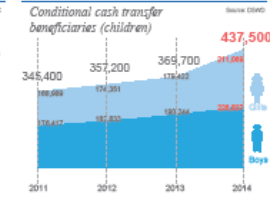
POVERTY



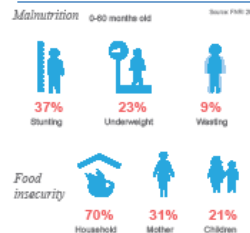
NATURAL DISASTERS



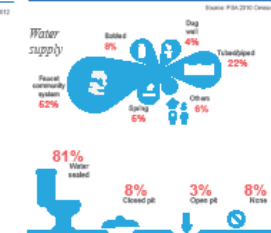
HUMAN DEVELOPMENT



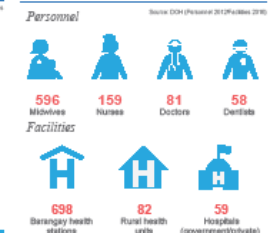
NUTRITION



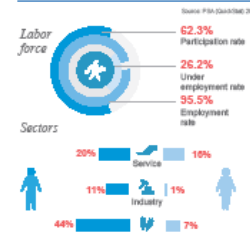
WASH



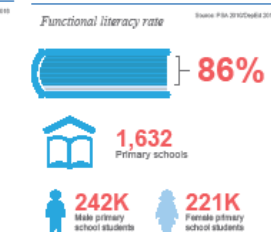
HEALTH



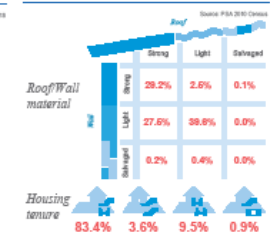
LIVELIHOOD



EDUCATION



SHELTER



The boundaries and names shown and the designations used on this map do not imply official endorsement or acceptance by the United Nations. Creation date: January 2017 Sources: PSA, DSWD (NHTS), OCHA, OCCINORRMC, DEPED, FNRL, Project NOAA, NAMRIA, QADM, BRTM Feedback: adlawe@un.org, mendaza@un.org, sporte@un.org www.unocha.org/philippines www.refugees.int philippines.humanitarianresponse.info

Philippines: Region VIII (Eastern Visayas) Profile



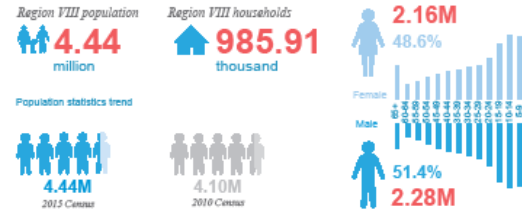
Region VIII (Eastern Visayas) is one of the three regions in central Philippines links the islands of Luzon and Mindanao through the National Maharlika Highway that runs through it. It is bordered by the Surigao Strait and the island of Mindanao on the south; by the San Bernardino Strait and the tip of the Bicol Peninsula on the north; the Maqueda Bay, Camotes and Visayan Sea and the islands of Cebu and Bohol on the west; and the Leyte Gulf, the Philippine Sea and the Pacific Ocean on the east.



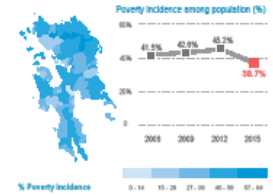
The boundaries and names shown and the designations used on this map do not imply official endorsement or acceptance by the United Nations.

Creation date: January 2017 Sources: PSA, DSWD (NHTS), DOH, OCD/NDRRMC, DEPED, FHR, Project NOAH, NAMRIA, GADM, BRTM Feedback: adstew@un.org, mendoza1@un.org, aport@un.org, www.unocha.org/philippines, www.reliefweb.int, philippines.humanitarianresponse.info

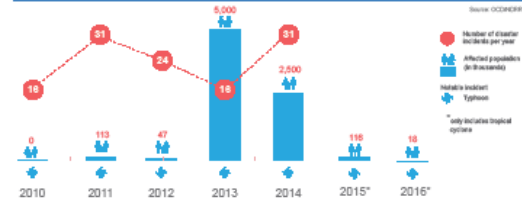
POPULATION



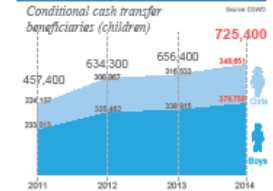
POVERTY



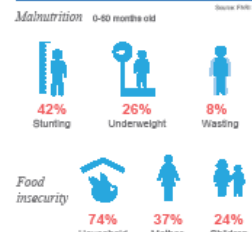
NATURAL DISASTERS



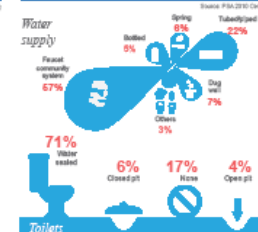
HUMAN DEVELOPMENT



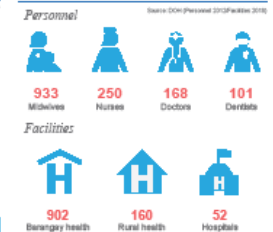
NUTRITION



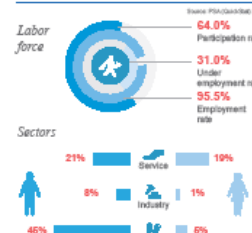
WASH



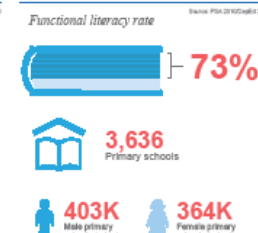
HEALTH



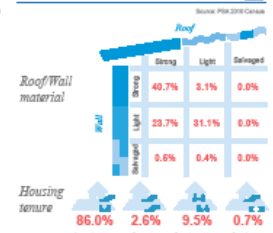
LIVELIHOOD



EDUCATION

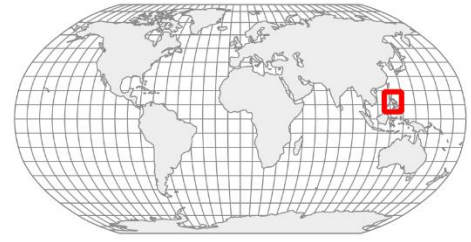


SHELTER



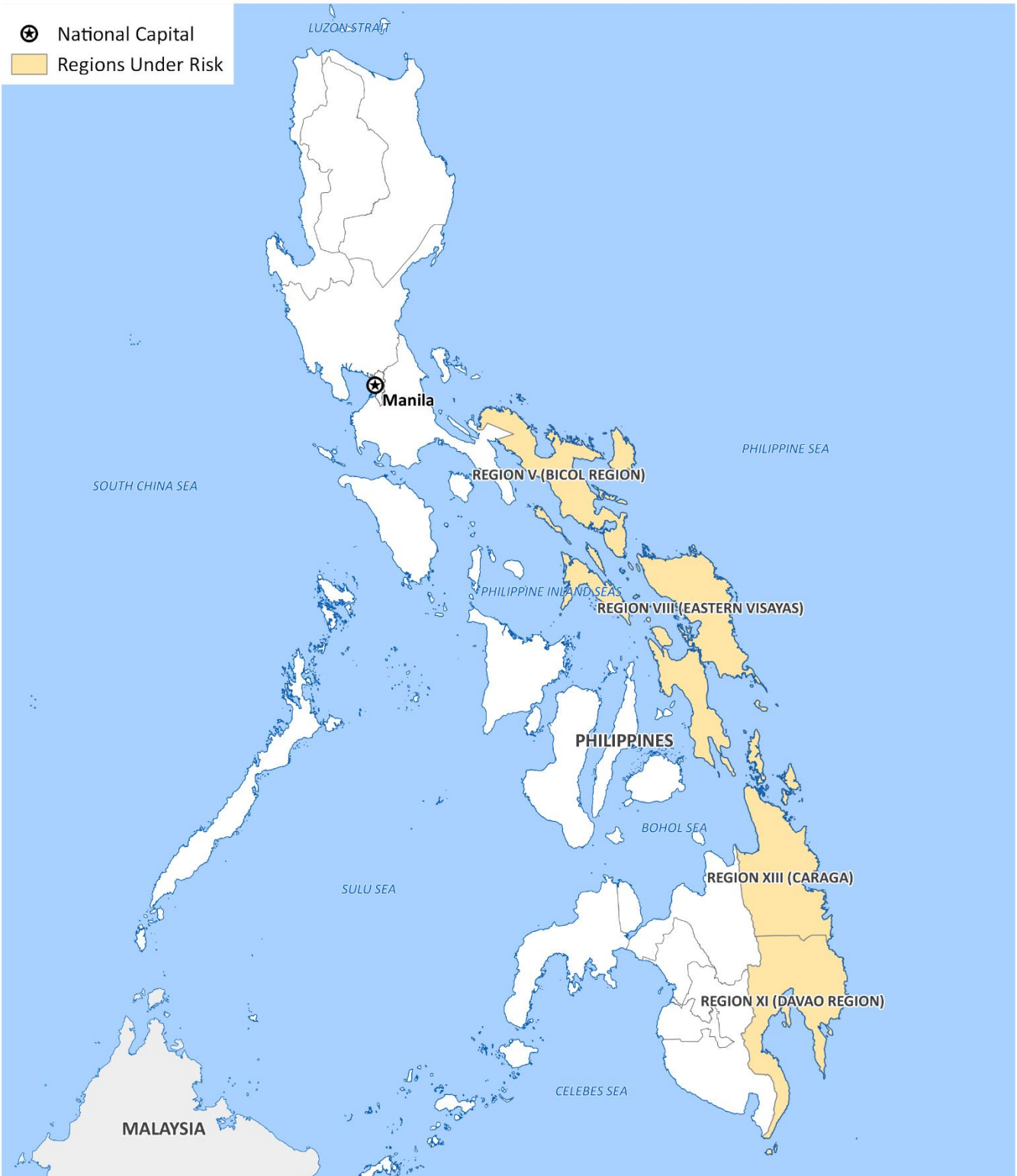


International Federation of Red Cross and Red Crescent Societies
 Fédération internationale des Sociétés de la Croix-Rouge et du Croissant-Rouge
 Federación Internacional de Sociedades de la Cruz Roja y de la Media Luna Roja
 الاتحاد الدولي لجمعيات الصليب الأحمر والهلال الأحمر



Philippines, Tropical Depression: Disaster Relief Emergency Fund

18 January 2019 • MDRPH031 • EC-2019-000004-PHL



The maps used do not imply the expression of any opinion on the part of the International Federation of the Red Cross and Red Crescent Societies or National Societies concerning the legal status of a territory or of its authorities. Map data sources: OCHA, OSM Contributors, ICRC, IFRC.

