


www.ifrc.org
Saving lives,
changing minds.

Disaster relief emergency fund (DREF) Ecuador: Floods

 International Federation
of Red Cross and Red Crescent Societies

DREF operation n° MDREC005
GLIDE n° [FL-2012-000013-ECU](#)
21 March 2012

The International Federation of Red Cross and Red Crescent (IFRC) Disaster Relief Emergency Fund (DREF) is a source of un-earmarked money created by the Federation in 1985 to ensure that immediate financial support is available for Red Cross and Red Crescent emergency response. The DREF is a vital part of the International Federation's disaster response system and increases the ability of National Societies to respond to disasters.

CHF 62,760 has been allocated from the IFRC's Disaster Relief Emergency Fund (DREF) to support the Ecuadorian Red Cross (ERC) in delivering immediate assistance to some 450 families (2,250 beneficiaries). Un-earmarked funds to repay DREF are encouraged.

Summary: The continuous rainfall since January 2012 has caused floods and landslides across Ecuador, particularly in the foothills of the western mountain range and the coastal provinces. The provinces of

Manabí, Guayas, Los Ríos, El Oro and Loja were declared in state of emergency after severe floods affected some 71,800 families. By 14 March, 5,032 persons had evacuated their homes, 65 were injured and 20 had lost their lives as per official reports.



Some 5,000 persons have evacuated their homes and communities as severe precipitations since February have caused floods in several provinces of Ecuador. Source: Ecuadorian Red Cross (ERC)

The ERC, working in close partnership with the National Risk Management Secretariat (Secretaría Nacional de Gestión del Riesgo, SNGR), drew up a plan of action to assist 450 families with the support of the DREF. The families will be supported with food parcels and hygiene kits, as well as health and water, sanitation and hygiene promotion activities focusing on reducing the risk of a dengue epidemic as 70 per cent of the national territory has favourable environmental conditions for the propagation of the vector.

This operation is expected to be implemented over three months, and will therefore be completed by June 2012; a Final Report will be made available three months after the end of the operation (by September 2012).

[<Click here for the DREF budget; here for contact details; here to view the map of the affected area>](#)

The situation

Cumulative monthly precipitation (mm)
February 2012

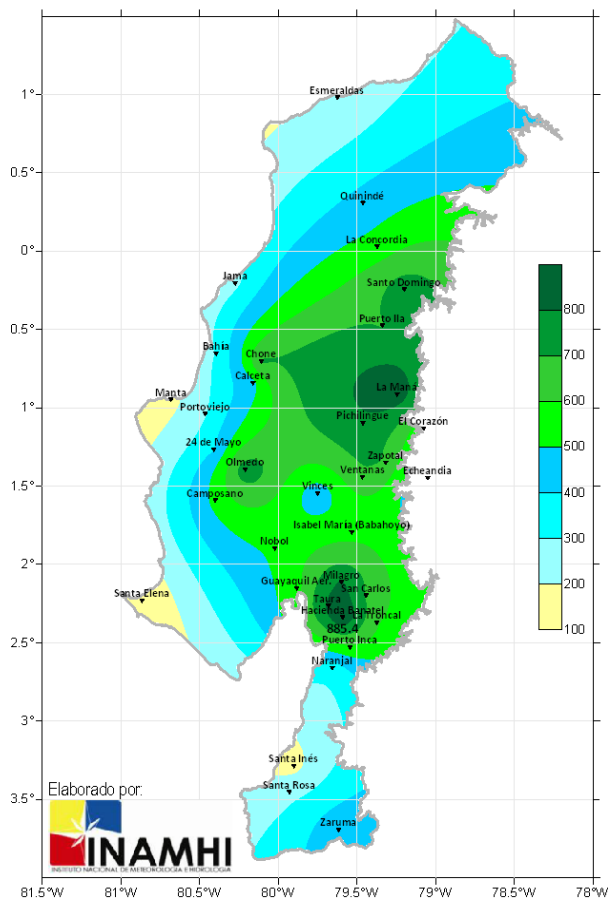


Figure 1. Rain accumulation (mm), February 2012.
Source: INAMHI

Ecuador, as several other countries in South America, is experiencing severe rainfall under the effects of La Niña weather phenomenon. The persistent rains since January 2012 have caused floods and landslides across the country, particularly in the foothills of the western mountain range and the coastal provinces. The accumulation of rain in February has reached the 700 and 800 millimetres in provinces such as Cotopaxi, Guayas and Los Ríos.

On 8 March, a state of emergency was declared for the Manabí, Guayas, Los Ríos, El Oro and Loja provinces as they accounted for 80 per cent of the affected population. However, the Ecuadorian government is now considering adding the Esmeralda province into the especial category, as the impact of the floods has increased significantly in this province.

On 14 March, the National Risk Management Secretariat reported 71,790 persons as affected by the exceptional weather conditions, of which 5,032 have evacuated their homes, 65 were injured and 20 lost their lives. At the moment, there are 91 collective centres sheltering 2,753 persons. These families are currently assisted by governmental authorities with food, safe water, hygiene items and health care.

The overflowing of rivers and the landslides have caused the collapse of drains systems, as well as damages in 43 schools, 25 bridges and in some 138 kilometres of roads. In addition, 12,962 homes have been affected and 184 destroyed, while 7,657 hectares of crops have been lost.

The table below presents some figures of the most affected departments from the report presented by the SNGR:

Province	Affected persons	Evacuated persons	Persons with destroyed homes	Persons in c. centres	No. of c. centres
El Oro	826	49	21	231	9
Esmeraldas	10,979	860	0	220	6
Guayas	15,995	509	293	386	23
Loja	19,828	423	54	181	11
Los Ríos	7,456	895	31	445	22
Manabí	14,723	1,823	10	1,203	14
Santa Elena	3,187	43	43	0	0

Health situation: the Ministry of Public Health estimates that 70 per cent of the national territory has environmental conditions favourable for the propagation of the mosquito *Aedes aegypti*, vector of the dengue disease. As Ecuador already had 2,041 cases on the four first weeks of the year, most of them in the Manabí, Los Ríos, Guayas and El Oro provinces, the current precipitations significantly increase the risk of dengue outbreaks. The Provincial Health Offices (Direcciones Provinciales de Salud) have the resources and supplies to provide medical assistance and are ready to deploy mobile health units to areas where the system becomes overwhelmed.

Coordination and partnerships

The ERC is working alongside governmental authorities at both the local and national level, supporting with information-gathering and planning of future actions. The National Society participates in the provincial and cantonal¹ Emergency Operating Centres; however, it also maintains close partnerships with the SNGR, the



Volunteers from the ERC Chone branch have supported the evacuation of families in one of the most affected provinces. Source: ERC

Ministry of Public Health, the Ministry of Agriculture, Livestock, Aquaculture and Fisheries (Ministerio de Agricultura, Ganadería, Acuacultura y Pesca, MAGAP) and the Ministry of Economic and Social Inclusion (Ministerio de Inclusión Económica y Social, MIES).

The Ecuadorian government is responding by clearing roads, assisting in evacuations, providing medical care, and distributing drinking water and emergency relief items. As of 10 March, the SNGR had deployed 182.33 tons of humanitarian aid, including 5,687 food parcels, 4,482 hygiene kits and 5,036 cleaning kits.

Other agencies in-country, such as the Office of U.S. Foreign Disaster Assistance (OFDA), the World Food Programme (WFP), and the Adventist Development and Relief Agency (ADRA), are also responding to the emergency. At the moment,

each organization is intervening in different relief sectors under the coordination and leadership of the SNGR.

Red Cross and Red Crescent action

The ERC is working alongside the SNGR and other governmental authorities in search and rescue, evacuations, pre-hospital care, damage and needs assessments, and distribution of relief items. The National Society has a total of 753 volunteers, of which 190 are participating in the current emergency and the rest are ready to be activated as needed. The following table specifies some of the specialized teams available to respond:

<i>Capacity of the National Society</i>	<i>No of Volunteers</i>
Pre-hospital care teams	117
Psychosocial support teams	24
Restoration of family links team	12
Need assessment teams	25
National Intervention Team (NIT): health, disaster management, principles and values	17
IT & Telecom teams	13
Search and rescue teams	20
Ambulance teams	23
Transportation teams	35
Census teams	29

The needs

Selection of people to be reached: although the governmental authorities are responding to the emergency, the extent of the situation in certain areas will require prolonged assistance, as many families

¹ The country of Ecuador is divided in 24 provinces and 226 cantons. Cantons of Ecuador are the second-level subdivisions of Ecuador below the provinces.

will need food parcels and hygiene kits for several months while they recover their possessions and lost harvests. In addition, the high risk of water-related diseases, and dengue in particular, prompts the need to continue with health preventive actions such as providing access to safe drinking water, and sanitation and hygiene promotion.

The National Society has an overall plan of action to reach a total of 2,038 families in seven provinces in collaboration with the SNGR. The current DREF-supported operation is integrated within this plan of action and it will reach 350 families in the canton of Chone (Manabí province) with food and hygiene kits and 450 families with safe water and health promotion activities.

The proposed operation

Relief distributions (food and basic non-food items)
Outcome: 350 affected families from the Manabí province will benefit from the provision of essential food and non-food items to alleviate the effects of the emergency.
Output 1: 240 families (1,200 persons) will receive food parcels
Output 2: 350 families (2,250 persons) will receive hygiene kits
Activities:
<ul style="list-style-type: none"> • Identify and select families in affected areas. • Procure locally food parcels and hygiene kits. • Develop a beneficiary targeting strategy and registration system to deliver intended assistance. • Distribute relief supplies and control supply movements from point of dispatch to end user. • Monitor and evaluate the relief activities and provide reporting on relief distributions.

Two distributions of food parcels and hygiene kits will be completed once the first one-month supply provided by the government is exhausted. The content of the food parcels to be distributed is as follows:

Item	Units	Quantity
Rice	kg	7
Oats	kg	4
Beans	kg	2
Lentils	kg	2
Oil	Lt	2
Tuna (12 cans 170gr)	kg	2
Sugar cane cake	kg	1
Sugar	kg	4
Ionized salt	kg	1
Packing bag	kg	1

The contents of the second hygiene kits to be distributed will have some differences, as the second kit will only replenish those items that would be exhausted after a month of use. The content of the first hygiene kits is as follow:

Item	Quantity
Soft toothbrush (for adults)	3
Soft toothbrush (for children)	2
Tube of toothpaste (75 cc)	5
Soap with insect repellent (100 g)	5
Antibacterial soap (125 g)	5
Laundry soap bar (250 g)	4
Washing-up liquid (250 g)	2
Combs	5
Double sheet toilet paper	12
Disposable razors	3
Pack of feminine pads	1
Towels 40cm * 45cm	5
Face towels 30cm * 35cm	5
Plastic bucket	1

The content of the second hygiene kits is:

Item	Quantity
Tube of toothpaste (75 cc)	5
Soap with insect repellent (100 g)	5
Antibacterial soap (125 g)	5
Laundry soap bar (250 g)	4
Washing-up liquid (250 g)	2
Double sheet toilet paper	12
Disposable razors	3
Pack of feminine pads	1
Plastic bucket	1

240 families will receive both food parcels and hygiene kits. However, the ERC will be procuring an additional 220 hygiene kits to be able to immediately reach an additional 110 families if the rains and flood continue as forecasted.

Emergency health

Outcome: The risk of dengue and other water related diseases of 450 families in the province of Manabí is reduced through a comprehensive response.

Output: Community-based disease prevention and health promotion is provided to 450 families (2,250 persons) in the Chone canton.

Activities planned:

- Coordinate with local authorities and community members
- Conduct refresher training on epidemic control for volunteers
- Carry out educational campaigns on dengue prevention and hygiene promotion at community level.
- Monitor, evaluate and report on the health activities.

Volunteers trained in epidemic control will visit communities to complete household visits in coordination with community members. During the visit, they will assist with the identification and cleaning of mosquito breeding grounds and will provide other health and hygiene information. These activities are already being implemented to combat a dengue outbreak in Salitre, province of Guayas, in coordination with the Ministry of Public Health. However, with the support of the DREF, the scope of the project will be expanded to reduce the risk of dengue in the areas affected by the floods in the Manabí province.

As the government will be distributing mosquito nets, the ERC will also provide information on their care. In addition, the hygiene kits to be distributed by the National Society contain soap with insect repellent, while volunteers will complete fumigation campaigns as mentioned in the sector below.

Water, sanitation, and hygiene promotion

Outcome: The risk of water-related diseases of 450 families is reduced through vector control activities and access to safe drinking water.

Output 1: 450 families have access to safe drinking water.

Output 2: 450 families are reached with fumigation campaigns.

Activities planned:

- Procure chemicals needed for the analysis and treatment of water
- Analyse the quality of water used in selected communities.
- Conduct refresher training on the use of water treatment plants
- Mobilize water treatment plants.
- Clean contaminated wells.
- Carry out fumigations in public spaces and at household level.

The ERC has deployed water treatment plants to support families in the communities of Badeal, Simbocal and Puntifino in Chone, Manabí province. The National Society is coordinating with the Chone municipality to distribute the treated water through trucks. The ERC also distributed jerry cans for the safe storage of water.

At the moment, the sanitation needs of families sheltered in collective centres are being covered by government institutions and the National Society has not received a request of support in this sector.

As mentioned on the previous sector, volunteers will carry out house to house visits as part of their health and hygiene promotion campaign. In addition, the National Society will complement the dengue prevention campaign by completing vector control activities such as fumigating and cleaning public spaces and households in the areas where the floods intensified the risk of the disease.

Contact information

- **National Society:** Rosa Martha Lobo Gonzalez, Secretary General of the Ecuadorian Red Cross. Phone: +593 2 2954587 email: rlobo@cruzroja.org.ec
- **IFRC regional representation:** Carlos Iñigo Barrera, regional representative for the Andean countries; email: ci.barrera@ifrc.org
- **IFRC Americas zone office**, phone: +507 317 3050
 - Jorge Zequeira, PADRU coordinator; email: jorge.zequeira@ifrc.org
 - Jane Grimshaw, PMER manager; email: jane.grimshaw@ifrc.org
 - Inga Purmalis, resource mobilization officer; email: inga.purmalis@ifrc.org
- **In Geneva:** Christine South, quality assurance senior officer, phone: +41.22.730.4529, email: christine.south@ifrc.org
- **Regional Logistics Unit (RLU):** Douglas Baquero, regional logistic coordinator; email: douglas.baquero@ifrc.org; phone: +507 6747 3146; fax: +507 316 1347.



[Click here](#)

1. DREF budget [below](#)
2. Map of the affected areas [below](#)
3. Click [here](#) to return to the title page

How we work

All IFRC assistance seeks to adhere to the [Code of Conduct for the International Red Cross and Red Crescent Movement and Non-Governmental Organizations \(NGOs\) in Disaster Relief](#) and the [Humanitarian Charter and Minimum Standards in Disaster Response](#) in delivering assistance to the most vulnerable.

The IFRC's vision is to inspire, encourage, facilitate and promote at all times all forms of humanitarian activities by National Societies, with a view to preventing and alleviating human suffering, and thereby contributing to the maintenance and promotion of human dignity and peace in the world.



The IFRC's work is guided by *Strategy 2020* which puts forward three strategic aims:

1. Save lives, protect livelihoods, and strengthen recovery from disaster and crises.
2. Enable healthy and safe living.
3. Promote social inclusion and a culture of non-violence and peace.

DREF OPERATION

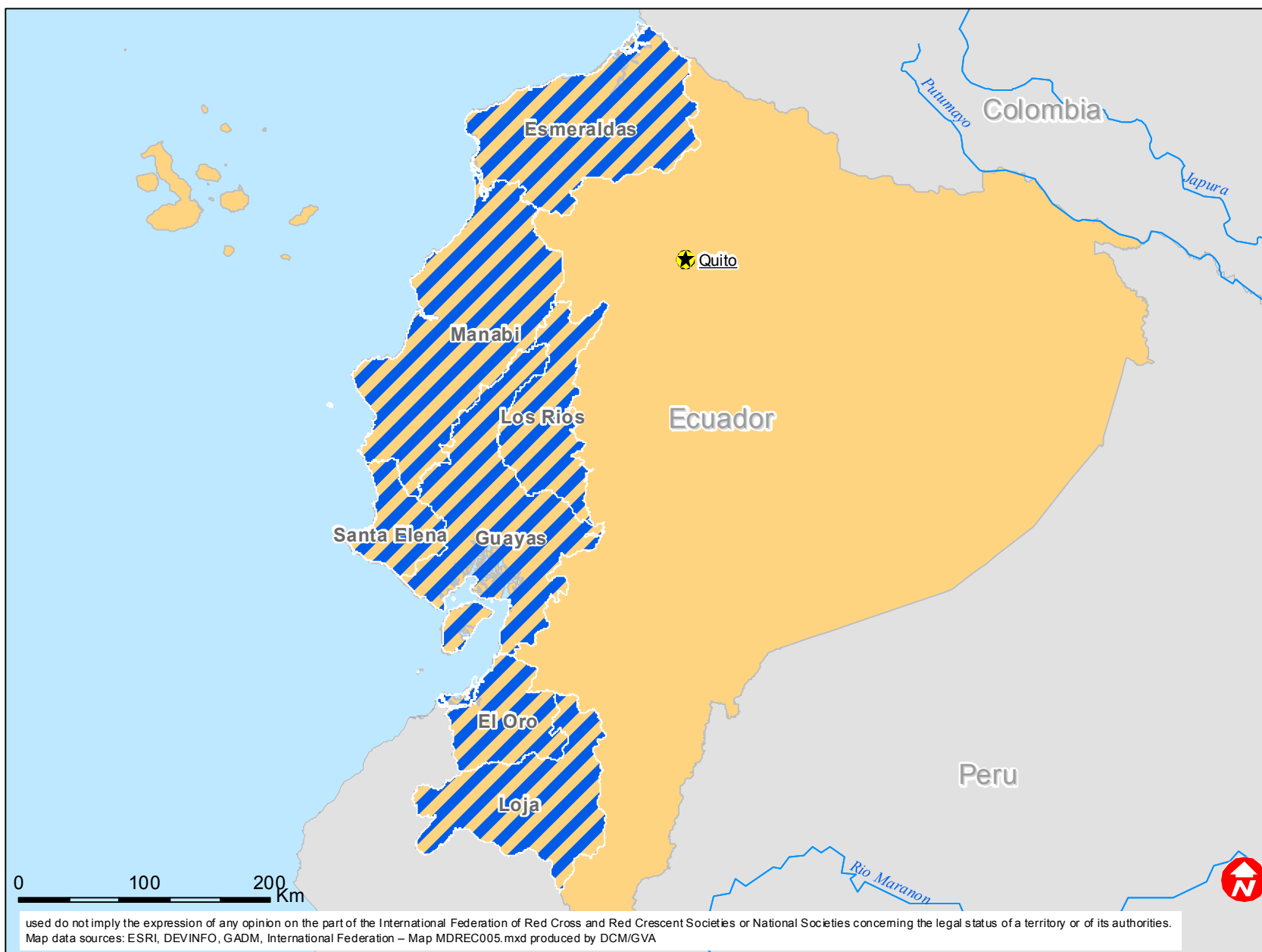
21-Mar-12


MDREC005 Ecuador floods

Budget Group	DREF Grant Budget CHF
Shelter - Relief	
Shelter - Transitional	
Construction - Housing	
Construction - Facilities	
Construction - Materials	
Clothing & Textiles	
Food	20,160
Seeds & Plants	
Water, Sanitation & Hygiene	23,550
Medical & First Aid	
Teaching Materials	
Ustensils & Tools	
Other Supplies & Services	
Emergency Response Units	
Cash Disbursements	
Total RELIEF ITEMS, CONSTRUCTION AND SUPPLIES	43,710
Land & Buildings	
Vehicles Purchase	
Computer & Telecom Equipment	
Office/Household Furniture & Equipment	
Medical Equipment	
Other Machinery & Equipment	
Total LAND, VEHICLES AND EQUIPMENT	0
Storage, Warehousing	
Distribution & Monitoring	
Transport & Vehicle Costs	1,500
Logistics Services	
Total LOGISTICS, TRANSPORT AND STORAGE	1,500
International Staff	
National Staff	
National Society Staff	2,400
Volunteers	3,100
Total PERSONNEL	5,500
Consultants	
Professional Fees	
Total CONSULTANTS & PROFESSIONAL FEES	0
Workshops & Training	2,050
Total WORKSHOP & TRAINING	2,050
Travel	1,500
Information & Public Relations	720
Office Costs	2,050
Communications	800
Financial Charges	1,100
Other General Expenses	
Shared Support Services	
Total GENERAL EXPENDITURES	6,170
Programme and Services Support Recovery	3,830
Total INDIRECT COSTS	3,830
TOTAL BUDGET	62,760



Ecuador: Floods



 Affected provinces