

www.ifrc.org  
Saving lives,  
changing minds.






## Emergency Plan of Action Operation Update Indonesia: Earthquakes and Tsunami - Sulawesi

 International Federation  
of Red Cross and Red Crescent Societies

<b>Emergency appeal n° MDRID013</b>	<b>Glide n°</b> <a href="#">EQ-2018-000156-IDN</a> ; <a href="#">EQ-2018-000135-IDN</a> ; <a href="#">EQ-2018-000127-IDN</a> ; <a href="#">EQ-2018-000122-IDN</a>
<b>EPoA update n° 14</b> <b>Date of issue:</b> 30 April 2019	<b>Timeframe covered by this update:</b> 1 January to 11 March 2019
<b>Operation start date:</b> 28 September 2018	<b>Operation timeframe:</b> 30 months <b>End date:</b> 28 February 2021
<b>Overall emergency appeal budget:</b> CHF 38.9 million (Lombok, Sulawesi and Sunda Straits); <a href="#">Donor response</a>	<b>Total DREF amount allocated:</b> CHF 1.58 million
<b>N° of people being assisted:</b> 80,000 people (approximately 20,000 households) in Sulawesi	
<b>Red Cross Red Crescent Movement partners actively involved in the Sulawesi operation:</b> Indonesian Red Cross – Palang Merah Indonesia (PMI) works with the International Federation of Red Cross and Red Crescent Societies (IFRC) and the International Committee of the Red Cross (ICRC) as well as Albanian Red Cross, American Red Cross, Australian Red Cross, Austrian Red Cross, Belgian Red Cross Society, British Red Cross Society, Canadian Red Cross, Danish Red Cross, German Red Cross, Hong Kong branch of the Red Cross Society of China, Italian Red Cross, Japanese Red Cross Society, Korea National Red Cross, Liechtenstein Red Cross, Macau Red Cross Society, Red Cross Society of Monaco, the Netherlands Red Cross, Norwegian Red Cross Society, Qatar Red Crescent, Red Cross Society of China, Spanish Red Cross, Swedish Red Cross, Swiss Red Cross, The Red Cross Society of The Republic of China (Taiwan), and Vietnam Red Cross.	
The Qatar Red Crescent, Turkish Red Crescent and German Red Cross are contributing bilaterally to the Sulawesi response.	
<b>Other partner organizations actively involved in the Sulawesi operation:</b> Government of Indonesia, UNOCHA, IOM, OFDA, ASEAN AHA Centre. The Governments of Australia, Canada, Republic of Ireland, Italy, Liechtenstein, Luxembourg, New Zealand, Norwegian, Spain, Switzerland, OPEC's Fund for International Development (OFID), private donors from Finland, Germany, Indonesia, Singapore, Spain, Switzerland, and the US; USAID, Avery Dennison Foundation, Coca Cola Foundation, Facebook, Grab Ltd, Hewlett Packard Foundation, Lululemon HK Ltd, Intercontinental Hotel Group, Tides Foundation, Ultradent Products, Inc. and Western Union have also contributed financially to the response.	

## A. SITUATION ANALYSIS

### Appeal History

-  **29 July 2018:** A 6.4 magnitude earthquake strikes off Lombok, province of West Nusa Tenggara
-  **31 July:** IFRC allocates CHF 211,569 from the [Disaster Relief Emergency Fund](#) (DREF) to enable PMI to meet the humanitarian needs of 1,000 households (4,000 people).
-  **5 August:** A second and stronger earthquake, of 7.0 magnitude and depth of 15km hits Lombok
-  **7 August:** An [Emergency Appeal](#) seeking **CHF 8.9 million** is launched to support PMI in providing assistance to 20,000 households for **18 months**. DREF loan is increased to a total of CHF 500,000.
-  **9 and 18 August:** New 5.9 and 6.4 magnitude earthquakes strike Lombok. According to BNPB, the four quakes killed more than 510 people, injured at least 7,100 others, and displaced more than 431,000 people.

- **21 September:** The Emergency Plan of Action (EPoA) for Lombok operation is issued.
- **28 September:** A 7.4 magnitude earthquake at a depth of 10km strikes Central Sulawesi, followed by a tsunami which hit coastal areas of Donggala and Palu regencies.
- **29 September:** IFRC allocates CHF 750,000 from DREF, bringing the total DREF advance for this Emergency Appeal to CHF 1.25 million.
- **30 September:** A [Revised Emergency Appeal](#) incorporating the Sulawesi earthquake and tsunami is issued, seeking **CHF 22 million** to enable PMI to deliver assistance to 40,000 households – 20,000 in Lombok and 20,000 in Central Sulawesi for **20 months**.
- **31 October:** The EPoA for Sulawesi operation is issued.
- **8 November:** The [Emergency Appeal](#) is further revised to include mid- to longer-term recovery needs in the affected areas as well investing in increased preparedness and resilience for both affected communities and local actors such as PMI's branches, seeking up to **CHF 38.5 million** to enable PMI to deliver assistance to 40,000 households – 20,000 in Lombok and 20,000 in Central Sulawesi for **30 months**.
- **25 November to 4 December:** Recovery needs assessment is carried out for Lombok & Sulawesi earthquake and tsunami operations. The assessment recommendations inform an integrated multi-sectoral recovery programme approach and revision of the emergency appeals.
- **10 December:** Preliminary report on recovery assessment results have been presented to PMI Leadership/IFRC Team and followed up with drafting on detail recovery plan of action which targeted to 8,000 household for core package (shelter and latrines) through cash-based intervention, and 20,000 household for community resilience package (health, PSS, WASH, DRR, livelihood, NSD).
- **27 December:** The [Emergency Appeal](#) is revised for a third time, incorporating the Sunda Straits tsunami, seeking up to **CHF 38.9 million** to enable PMI to deliver assistance to 41,400 households – 20,000 in Lombok, 20,000 in Central Sulawesi and 1,400 in areas affected by the Sunda Straits Tsunami for 30 months.
- **15 January 2019:** [Operations update 10](#) (Sulawesi operation) is published
- **11 March:** The Revised Emergency Plan of Action is published. The plan of action aims to support PMI in delivering relief and early recovery assistance to 20,000 households (80,000 people) in Central Sulawesi for **30 months**.

## Description of the disaster

On 28 September 2018, a series of strong earthquakes struck Central Sulawesi Province. The strongest of which measured at 7.4 magnitude and 10km deep with the epicenter in Donggala Regency, close to the provincial capital Palu. The earthquake triggered a tsunami which reached up to three meters in some areas, striking Talise beach in Palu and Donggala. The earthquakes, tsunami and resulting liquefaction and landslides caused significant damage and loss of life in affected areas.

As of 30 January 2019, the latest disaster data from Central Sulawesi Governor's report indicates:

<b>172,999</b>	<b>40</b>	<b>2,830</b>	<b>701</b>	<b>2,531</b>
<b>Internally Displaced People (IDP)</b>	<b>IDP Points</b>	<b>People dead</b>	<b>People missing</b>	<b>People injured</b>

Areas affected by the earthquake, tsunami, landslides and liquefaction suffered extensive damage to buildings and infrastructure. *Government data as of 30 January 2019.*

District/City	Minor Damaged House	Medium Damaged House	Heavily Damaged House	Lost House	Total
Palu City	17,293	12,717	9,181	3,673	42,864
Sigi	10,612	6,480	13,144	302	30,538
Donggala	7,989	6,099	7,290	75	21,453
Parigi Moutong	4,191	826	533	-	5,550
<b>Total</b>	<b>40,085</b>	<b>26,122</b>	<b>30,148</b>	<b>4,050</b>	<b>100,405</b>

According to BNPB, the disaster caused more than CHF 1.63 billion worth of damages across the province.

- Shelter – CHF 624 million
- Economic – CHF 443 million
- Infrastructure – CHF 412 million
- Social – CHF 142 million
- Other sectors – CHF 27 million

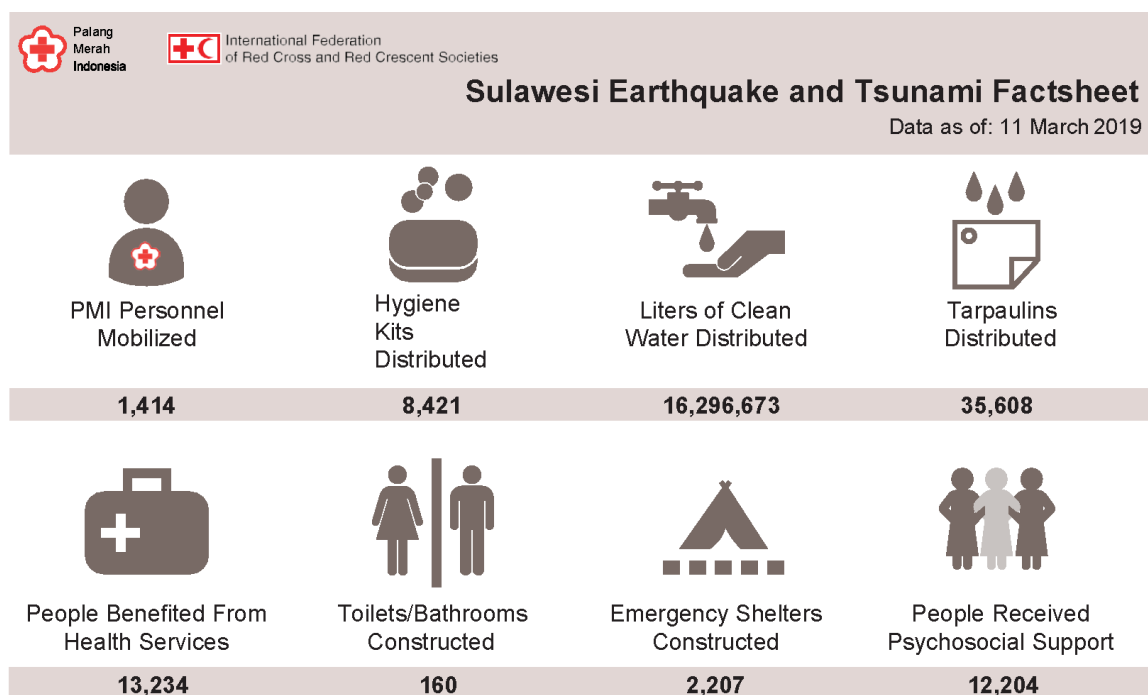
Currently, 170 organizations are carrying out activities across 63 locations in Central Sulawesi. Priorities include shelter, logistics and economic recovery, medical assistance, clean water, sanitation and hygiene, recovery of infrastructure and public services, protection and social inclusion, including women's and children's protection, and education. Humanitarian response has made a significant progress in reaching and serving the people in need of assistance. Regional and international agencies continue to support national efforts and leadership. NGOs, the Red Cross and the UN are on the ground augmenting the national response.

## Summary of the current response

### Overview of Host National Society

PMI Central Sulawesi has been on the ground since the onset of the disaster. PMI has deployed almost 1,400 volunteers from branches in Central Sulawesi and across Indonesia. These volunteers are running clinics (mobile and fixed), providing referral services and psychosocial support, setting up emergency shelter sites, distributing water and relief items, among other things. PMI also mobilized assets from the province and other areas to augment local capacities in the districts.

PMI continues to deliver assistance, supported by partners, including IFRC technical specialists, to fulfill responsibilities delegated to it by the National Disaster Management Agency (*Badan Nasional Penanggulangan Bencana* – BNPB) such as the reception and distribution of relief items received through the government-to-government pipeline, in addition to managing those coming through the Red Cross Red Crescent Movement.



Source: PMI sitrep no.92, 11 March 2019  
Information reporting systems are improving, however numbers are still prone to fluctuation.  
Activity figures represent the overall achievements of PMI from beginning of the operation

Sectoral highlights of services provided by PMI through the support of the IFRC and other partners as of 11 March 2019.

### Overview of Red Cross Red Crescent Movement in country

IFRC has a Country Cluster Support Team (CCST) for Indonesia and Timor Leste consisting of a head of office and technical capacities in disaster management, health, water, sanitation and hygiene, National Society development (including protection, gender and inclusion - PGI), communication, community engagement and accountability (CEA) and support services in finance, human resources and administration.

PMI works with the IFRC and ICRC as well as PNS in-country including the American Red Cross, Australian Red Cross and Japanese Red Cross Society. All these partners are coordinating with PMI as the Movement's lead agency for both operations in Lombok, Sulawesi and Sunda Strait.

The Japanese Red Cross has been supporting the implementation of the health activities, specifically a clinic in Tompe and distribution of mosquito nets. The Turkish Red Cross has been playing a role in relief distribution, setting up tents and supplying non-food items (NFIs), as well as supporting the rehabilitation of one school. The German Red Cross has a representative in Palu, providing support for WASH. The American Red Cross has provided staff from its delegation in Jakarta to support admin and shelter/relief assessments.



*Canadian Red Cross team visited IFRC-supported PMI transitional shelters in Sambo village, Sigi district, and conducted interview with beneficiaries to collect stories. (Photo: IFRC)*

Information sharing and coordination meetings are led by PMI and have been taking place since the first earthquake in Lombok. The IFRC is supporting engagement with the international media to reflect the Red Cross and Red Crescent Movement's response and support resource mobilization efforts.

On 22 February, a coordination meeting was conducted at Palu basecamp with PMI, IFRC and Turkish Red Crescent participating. Among the things discussed during the meeting was PMI long term plan, including introduction of organizational design for the province to handle the operation.

Movement coordination meetings are conducted with partner National Societies and ICRC to discuss the response to date and how to best support the National Society's continued efforts in a coordinated manner. Bilateral support from Singapore Red Cross, Turkish Red Crescent, Malaysian Red Crescent, Kuwait Red Crescent, German Red Cross, Hong Kong branch of the Red Cross Society of China, Turkish Red Crescent Society and Qatar Red Crescent were also provided to support the three operations.

Global and regional tools were activated to support the operation since the onset of the disaster. This has since been replaced by longer-term delegates handling the operation in support of PMI. The last of the surge deployments left the country on 14 February.

### **Overview of non-RCRC actors in country**

PMI and the IFRC work closely with BNPB and the Ministry of Social Affairs (MOSA) on the response to the disasters. PMI is also in close coordination with the District Health Office (DHO) to obtain updated information on the immediate medical needs of injured people, especially those who need further medical assistance.

IFRC participates in meetings of the humanitarian country team chaired by the UN Office for the Coordination of Humanitarian Affairs (OCHA) held both during disasters and non-emergency times. At national level, MOSA, PMI and IFRC co-lead the sub-cluster on shelter and settlements, which falls under the wider umbrella of the Displacement and Protection cluster led by the Indonesian government. PMI and IFRC have been in close coordination with the national cluster system and have been supporting MOSA in leading the sub-cluster since the earthquakes in Lombok in August. This has extended to Sulawesi after the earthquake and tsunami on 28 September to share information on rapid assessment results, contribute to the joint needs assessment and government response plan, analyse gaps and potential support of other organization and the mechanism of cluster coordination at all levels. Further support to the shelter sub-cluster coordination including additional technical support and human resources to meet both emergency and longer-term needs (including strengthening national capacity) is still under discussion.

PMI also participates in relevant national and provincial cluster coordination meetings where possible, and IFRC maintains contact and shares information with the AHA Centre, of which PMI has an embedded member in the ASEAN emergency response and assessment team (ASEAN ERAT) as well as the Humanitarian County Team (HCT).

## Needs analysis, targeting, scenario planning and risk assessment

On early November PMI, supported by IFRC undertook a joint recovery assessment across the disaster affected areas in Sulawesi to more clearly identify disaster affected people's early to longer term recovery needs. The recovery assessment was designed to support the planning of recovery programming and align with the work of Indonesian Government Authorities and other partners.

Summary of the recovery assessment findings and recommendations are reflected in the [Operations Update 10](#).

### Targeting

The Sulawesi operation aims to support the needs of the most vulnerable population affected by the impact of earthquakes and tsunami in Palu, Sigi, Donggala and Parigi. PMI, with support from the IFRC, coordinates with local authorities in identifying targeted population for the response and considers cultural sensitivity, gender, most vulnerable groups, and ensuring inclusivity in the beneficiary selection process.

### Operation Risk Assessment

According to *Badan Meteorologi Klimatologi dan Geofisika Indonesia* (BMKG), since 1900s, Sulawesi have been hit by tsunamis 19 times, the latest one brings the number up to 20 times. BMKG stated over 700 aftershocks have been experienced since the first quake. The seismic activity is slowly decreasing. However, the threat of further aftershocks remains together with a risk of liquefaction especially in Palu. A strong enough aftershock or another quake would result in further casualties as well as damage to remaining structures and roads, the latter impacting access to affected communities. Due to the recent strong aftershocks, there are probabilities of landslides in mountainous and hilly areas especially in Sigi and Parigi Moutong. It is necessary that all Red Cross teams in the field are aware of this risk and prepare well in case of rapid evacuation from buildings and in case they get stuck on the road. Safety and security plans are updated accordingly.

During the rainy season in Sulawesi, heavy rains could cause mudslides and affect the distribution of items and reach of other services. The environment and weather also present the risk of mosquito borne diseases such as dengue and malaria, with a possible risk for an outbreak.

Another risk is an insufficient number of PMI volunteers from the Central Sulawesi province or delays in the deployment of volunteers from other areas which would delay the implementation of the programmes. Cash flow has also hampered the deployment of volunteers to due late payments of per diems for food and transportation of volunteers.

## B. Operational strategy

### Overall objective

The Sulawesi operation aims to support the needs of up to 20,000 households (80,000 people) from the affected rural and urban communities Palu, Sigi, Donggala and Parigi Moutong in Central Sulawesi with appropriate immediate, medium-term and recovery assistance in a timely, effective, and efficient manner and increase their resilience to future shocks.

### Proposed strategy

The operation aims to support affected families to re-establish their lives and livelihoods through coordinated and integrated efforts with government and other key stakeholders in the affected areas. This operation aims to build back more resilient communities and re-stimulate local economies affected in a socially and environmentally sustainable manner.

The operation consists of closely integrated sectors aiming to provide:

1. **Health** interventions focusing on **community-based disease prevention and health promotion, psychosocial support, first aid, deployment of emergency health units, and referral services and medical rehabilitation.**
2. **Water, sanitation and hygiene** interventions focusing on improving access and storage to safe water and distribution of clean water as well as meeting emergency and longer-term sanitation needs, as well as provision of hygiene items and support for hygiene promotion activities.
3. **Shelter and settlements** assistance to support access to safer living conditions during the initial stages of the emergency by the provision of tarpaulins, mattresses, shelter toolkits and blankets followed by support to prioritize self-recovery accompanied by technical support and awareness on build back safer techniques.


4. **Basic needs support** through the provision of multi-purpose cash grants to allow households to prioritize basic needs and prevent them from falling below survival thresholds.
5. **Livelihoods** support through **cash grants** and enrolment to **vocational training institutions**, and specific livelihoods activities in consultation with community members, taking access to employment, land or equipment for generating income into account.
6. **Restoring Family Links**, led by PMI and supported by ICRC and IFRC under **migration**.
7. Cross-cutting consideration and support to ensure **community engagement and accountability** (CEA) as well as **protection, gender and inclusion** (PGI) at all times.
8. **Community-based mitigation** and **disaster risk reduction** activities.
9. Support to **National Society development** in Sulawesi, in the repairs of existing branches impacted by the earthquakes as well as additional training for capacity building of volunteers in the region.

### **Operational support services**

For operational support services, see the Revised Plan of Action thru this [link](#).

## C. DETAILED OPERATIONAL PLAN

The activities detailed under each sector are only related to the current response in **Sulawesi**.

	<h3 style="color: red;">Shelter</h3> <p>People targeted: 80,000 (20,000 households) People reached: tbc</p>					
<b>Shelter Outcome 1: Communities in disaster and crisis affected areas restore and strengthen their safety, well-being and longer-term recovery through shelter and settlement solutions</b>						
<b>Indicators:</b>	<b>Target</b>	<b>Actual</b>				
# of households targeted/reached with safe, appropriate and adequate shelter and settlements assistance	9,500	Outcome indicator will be reported in final report				
<b>Shelter Output 1.1: Short, medium and long-term shelter and settlement assistance is provided to affected households</b>						
<b>Indicators:</b>	<b>Target</b>	<b>Actual</b>				
# of households provided with emergency shelter and settlement assistance	9,500	1,556				
<b>Shelter Output 1.2: Technical support, guidance and awareness raising in safe shelter design and settlement planning and improved building techniques are provided to affected households</b>						
<b>Indicators:</b>	<b>Target</b>	<b>Actual</b>				
# of households provided with technical support and guidance	2,000	Not started yet				
<b>Shelter Output 1.3: Families' mid-term basic needs are met through the provision of basic household non-food items</b>						
<b>Indicators:</b>	<b>Target</b>	<b>Actual</b>				
# of households provided with basic household needs	20,000	16,675				
<b>Shelter Output 1.4: Families' mid-term shelter needs are met</b>						
<b>Indicators:</b>	<b>Target</b>	<b>Actual</b>				
# of households provided with mid-term shelter assistance through provision of temporary shelters	2,000	Not started yet				
<b>Progress towards outcomes</b>						
<b>Shelter and settlement assistance (relief distribution)</b> As per reporting period, it is estimated that around 16,675 households have been reached with relief items with support from the IFRC. Below is the number of households reached with support of the IFRC appeal. It is important to note that non-food items were not distributed in standard sets but based on PMI assessments on actual needs of affected households.						
<b>Overall PMI distribution (as of 11 March 2019)</b>						
Item	Number of households reached				PMI total	IFRC-supported
	Districts					
	Donggala	Palu	Parigi	Sigi		
Blanket	10,142	9,193	3,130	7,110	29,575	12,130
Tarpaulin	10,707	13,293	2,610	8,998	35,608	10,473
Family kits	90	1,101	91	677	1,959	1,341
Mosquito net	2,870	1,007	195	405	4,477	4,477
Bucket	-	1,230	-	2,046	3,276	3,276
Mattress/Plastic mat	155	95	262	1,434	1,946	1,570
<b>Contents of kits</b>						
	Family Kit	School Kit	Shelter Toolkit			
	Sarong 5 pcs Hand/Body soap 5 pcs Laundry soap 1Kg Shampoo 2 bottles 180 ml Tooth paste 75g 5 pcs Tooth brush 5 pcs	Backpack 1 pc Note book 1 pack (Contains 10 books) 2B Pencil 3 pcs Pen/ Ballpoint 3 pcs Eraser 1 pc	Hoe + Handle 1 pc Shovel +Handle 1 pc Mutt Hoe 1 pc Claw Hammer 1 pc Shears 1pcs Hand saw 1 pc			

Towel 5 pcs Dish wash soap 40g 1 pc Water bucket 40 cm diameter 1 pc Plastic plate 5 pcs Plastic cup 5 pcs Spoon 5 pcs Sleeping mat 1 pc 180x180 cm Napkins' pack 2 pcs Slippers 3 pcs Plastic bag 10 pcs	Pencil Sharpener 1 pc Plastic Ruler 1 pc Pencil Box 1 pc Coloring Pencil 24 pcs Lunchbox 1 pc Drinking Bottle 1 pc	Machete 1 pc Curved needle 2 pcs Measuring tape 3 M - 1 pc Tie wire 25 M - 1 pc Rope 30 M-12 MM - 1 pc Nails 7.5 cm - 500 gr Nails 4 cm - 500 gr Roofing Nails with washer 7.5 cm - 500 gr
--	---	---

During distributions, IFRC supports PMI to conduct exit surveys, targeting 10 per cent of the beneficiaries, to ascertain efficiency and effectiveness of the service delivery. Below are some of the key findings:

- Total respondents – 551
  - 427 females (77 per cent); 124 males (23 per cent)
  - Aged under 18 y/o: 21 (4 per cent); 18 – 25 y/o: 57 (11 per cent); 26 – 45 y/o: 247 (49 per cent); 46 – 65 y/o: 167 (32 per cent); Older than 65 y/o – 19 (4 per cent)
  - 249 respondents (45 per cent) live in camps; 160 (29 per cent) live in damaged house (owned)
  - 100 per cent said they did not pay or provide favors to be included in the list of beneficiaries
  - Feedback mechanism – 68 per cent said they did not know how or where to make complaints or provide feedbacks to PMI
  - 436 respondents (79 per cent) said they received information about the distribution
    - 81 per cent of those who received the information said they were accurate and useful
  - Heard about the distribution from:
    - Camp Coordinator – 14 per cent
    - Friends/relative – 15 per cent
    - Head of household – 40 per cent
    - Head of village – 16 per cent
    - PMI volunteer – 9 per cent
    - Other – 5 per cent
  - Verification – 74 per cent said it took 1 hour or less; 15 per cent said 2 hours
  - Receiving of items – 96 per cent it took less than 1 hour from verification
  - Cost – 74 per cent said it did not cost them anything to travel to and from the distribution site; 16 per cent said it cost them IDR 10,000 (less than CHF 1)
  - Satisfaction – 99 per cent said they were satisfied with the services of the volunteers and that they felt safe in during the distribution
  - Overall satisfaction – 99 per cent said were overall satisfied with the relief assistance of the PMI



Relief distribution in Parigi Moutong district. As of reporting, IFRC has supported PMI in distribution non-food items to at least 16,675 households. (Photo: IFRC)

Post-distribution surveys are currently being planned to target a sample of the beneficiaries to measure the quality, quantity and effectiveness of the assistance, as well as the perception of the beneficiaries towards the relief assistance operation of the PMI.

IFRC has supported PMI in the completion of the construction of 40 transitional shelters in Sambo, Sigi district. These was part of the model houses constructed in preparation for the implementation of the transitional shelter programme. However, the programme is now on hold due to the government's announcement that shelter assistance (through provision cash or permanent houses) to all households whose houses were damaged. Plans for early recovery shelter assistance are currently being re-

evaluated and finalized due to the effect of the government's announcement. The provision of technical assistance to ensure building back safer amongst the affected households and their communities is still to continue as planned.



## Livelihoods and basic needs

People targeted: 20,000 people (5,000 households)

People reached: (Activities not started)

### Outcome 1: Communities, especially in disaster and crisis affected areas, restore and strengthen their livelihoods

Indicators:	Target	Actual
# of targeted people that have enough food, cash or income to meet their survival threshold	20,000	Outcome indicator will be reported in final report
<b>Output 1.1: Vocational skills training and/or productive assets to improve income sources are provided to target population</b>		
Indicators:	Target	Actual
# target population improve the access to employment or self-employed in sustainable livelihood activities	2,000	Not started yet
<b>Output 1.2: Basic needs assistance for livelihoods security including food is provided to the most affected communities</b>		
Indicators:	Target	Actual
# households reduce their [damaging] coping strategies compared with post disaster level	5,000	Not started yet
<b>Output 1.3: Household livelihoods security is enhanced through food production and income generating activities</b>		
Indicators:	Target	Actual
# of households have enough productive assets to recover or strengthen their livelihoods	2,000	Not started yet
<b>Output 1.4: Households are provided with unrestricted/multipurpose cash grants to address their basic needs</b>		
Indicators:	Target	Actual
# of households reached with cash for basic needs	5,000	Not started yet

#### Progress towards outcomes

Activities under this area have not started. PMI national headquarters have indicated in their plan to support 2,000 households with livelihood assistance thru conditional cash grants. It is expected PMI will plan to implement distribution of multi-purpose cash grants to support 5,000 households to address basic needs. For the vocational training, PMI is developing a plan to select beneficiaries and institutions which will provide these trainings.

Selection of households will be based on the level of damage to houses, absence of support from government or other organizations and vulnerabilities.

A cash-based intervention delegate is in Palu to support the implementation as well as to coordinate with the government and other actors in developing and implementing guidelines for the distribution, including the amount, number of tranches/times and system (thru bank or other modes) to ensure harmony in implementation.

Assessments are currently being undertaken in the selection of the mode of transfer as well as targeting of locations (down to sub-village levels). To target locations, a selection survey of heavily damaged houses was conducted from February to March to prioritize the most vulnerable households in the communities.

The CBI delegate is working with the community engagement and accountability officer to ensure that information about the programme is properly communicated to communities in a timely manner. Volunteers who are implementing the programmes will also be trained to gather feedback, provide responses or refer feedbacks if necessary.

Protection, gender and inclusion components will also be incorporated in the selection of beneficiaries to ensure that vulnerabilities are considered, and the most vulnerable households are prioritized.

It is expected that the multi-purpose cash grants will be implemented starting middle of April while conditional cash grants and vocational training will start on the second week of June.



## Health

People targeted: 80,000 (20,000 households)

People reached: 11,782

### Outcome 1: The immediate risks to the health of affected populations are reduced

Indicators:	Target	Actual
# of people reached by emergency health services	80,000	Outcome indicator will be reported in final report

### Output 1.1: Target population is provided with emergency medical management of injuries and diseases

Indicators:	Target	Actual
# of people reached by First Aid services	10,000	numbers cumulated with medical services
# of people reached by emergency medical services	30,000	14,884

### Output 1.2: Capacity of local medical services to provide medical care is increased

Indicators:	Target	Actual
# of health facilities with improved capacity on medical services	4	Not yet started

### Output 1.3: Capacity of PMI emergency health response is strengthened

Indicators:	Target	Actual
# of participants certified on EMT	40	Not yet started

### Output 1.4: Capacity of PMI on coordination is strengthened

Indicators:	Target	Actual
Surveillance system linked to MoH is established	Yes	Not yet started

### Output 1.5: Community-based disease prevention is provided to the target population

Indicators:	Target	Actual
# of people reached with community-based disease prevention and health promotion programming	80,000	10,207

### Output 1.6: Community-based activities for malaria prevention and care

Indicators:	Target	Actual
# of households who received mosquito nets	18,574	4,477

### Output 1.7: Psychosocial support provided to the target population

Indicators:	Target	Actual
# of people reached by psychosocial support	40,000	12,204

### Output 1.8: Target population is reached with Search and Rescue activities

Indicators:	Target	Actual
# of volunteers deployed	600	Over 600 SRA ended mid-October 20 volunteers trained on ECV 37 volunteers trained in PSS 301 volunteers mobilized

**Output 1.9: Blood donation services rehabilitated to continue for target population**

Indicators:	Target	Actual
<i>Blood bank equipment and devices rehabilitated</i>	Yes	Not yet started

**Progress towards outcomes**

A health delegate has been supporting the PMI operation in Palu. The health delegate, IFRC health officer and PMI provincial counterparts continue to coordinate with government health officials as well as other organizations providing health services in the province, including WHO, Save the Children, UNICEF and Hope.

<b>5</b> PMI emergency medical teams (4 mobile + 1 fixed)	<b>4,788</b> people reached with PMI Emergency Clinic (fixed)	<b>10,096</b> people reached by mobile clinics	<b>12,204</b> people reached with Psychosocial support
--	--	---	---

**Emergency medical services**

With support from IFRC, Norwegian Red Cross and Japanese Red Cross Society, PMI continues to support the Puskesmas (Primary Health Care Unit) services interrupted due to the earthquake and tsunami. Health services provided include outpatients, emergency room, in-patients (8 beds), maternity, psychosocial support, health promotion and pharmacy. A total of 4,788 people accessed the health services provided at the tented emergency clinic in Tompe since becoming operational.

Clinics continue to provide 24-hour access for emergencies and pregnant mothers. Services include basic emergency care, outpatient and in-patient care (4 beds each for males and females), mother and child-care (basic deliveries and basic obstetric care), psychosocial support service, pharmacy, basic laboratory and referral services.

PSS activities continue with activities such as drama, counselling and other small workshops and exercises. Following the training of health promotion volunteers in ECV (epidemic control), health promoters (volunteers) are beginning the support services within the clinic and for outreach services.

No infectious disease outbreaks reported throughout January and February, while most health services provided to address gastrointestinal illnesses, upper respiratory infections, skin diseases and minor wounds/lacerations.

In addition to emergency medical care, PMI has four emergency medical mobile teams that continue to serve affected communities. There were 10,096 patients in total that have been attended by PMI mobile teams in Palu, Parigi, Sigi and Donggala.

**Disease prevention and health promotion programming**

During this reporting period, there are no reported outbreaks of disease. However, during the period from January to early February, the government reported 48 cases of dengue which resulted to 2 fatalities. Although the number of cases remain below outbreak figures, the government requested support for dengue awareness and prevention campaigns.

Health promotion activities continue in all operational areas through PMI health trained volunteers. The topics covered positive behaviour in clean and healthy environment, Dengue fever (DBD), malaria and vector control. Health promotion activities have reached 10,207 people.

A training on Epidemic Control for Volunteers has been conducted in the districts of Sigi and Parigi, reaching 20 volunteers in each district. These volunteers are expected to provide health promotion activities and sure proper reporting and referral of diseases in their communities to proper channels and health facilities.

PMI, with the support of IFRC, is planning the third phase of the distribution of more than 2,000 Long Lasting Insecticidal mosquito Nets (LLIN) for prevention of mosquito-borne diseases.

IFRC health personnel met with PMI health coordinator from the headquarters, PMI provincial health coordinator and the head of Puskesmas in Sirenja to discuss the PMI-IFRC support including for the rehabilitation of Pustus (clinic), and the construction of a temporary Puskesmas to provide services while the permanent one is being constructed by the government. IFRC personnel from health, WASH and shelter sectors visited the Pustus and Puskemas to conduct technical assessments of the structure and to provide recommendations.

**Psychosocial support**

Distress caused by severe loss, trauma, continuing danger, and constrained social and living conditions continue to affect the population in damaged areas. PMI has continuously provided psychosocial support services to meet immediate needs of mental health services. So far, 12,204 people have been reached with PSS activities in the communities. Specific PSS intervention during the operation are:

- Providing psychosocial first aid to affected communities (including providing basic, human support; delivering practical information and showing empathy, concern, respect and confidence in the abilities of the individual affected).
- The activities which are appropriate in PSS response: community mobilization (as first step in mobilizing community participation); community based psychosocial activities; awareness raising and phyco-education.

**Volunteers deployed for Search and Rescue (SAR)**

During the period of reporting, there is no additional updates reported as SAR activities ended by mid-October.

**Rehabilitation of blood bank and health facilities**

IFRC health delegate has been in discussion with PMI counterparts from the National Headquarters and the province, as well as officials from the Ministry of Health, regarding rehabilitation of the three Pustus (clinics); and the construction of one temporary Puskesmas to provide medical services while the government is construction a permanent one. Several assessments have been undertaken by the health team together with the shelter delegate. A plan is currently being developed based on these assessments.

The support of the IFRC towards improvements for the blood bank is mainly planned towards provision of equipment. The health team is currently discussing with PMI and government health officials to finalize the plan for the improvement of the blood bank in Central Sulawesi.

**Water, sanitation and hygiene**

People targeted: 80,000 (20,000 households)

People reached: 69,741

**Outcome 1: Immediate reduction in risk of waterborne and water related diseases in targeted communities**

Indicators:	Target	Actual
# of households provided with safe water services that meet agreed standards according to specific operational and programmatic context	20,000	Outcome indicator will be reported in final report

**Output 1.1: Continuous assessment of water, sanitation, and hygiene situation is carried out in targeted communities**

Indicators:	Target	Actual
# of assessment conducted	1	1

**Output 1.2: Daily access to safe water which meets Sphere and WHO standards in terms of quantity and quality is provided to target population**

Indicators:	Target	Actual
# of people provided with safe water (according to WHO standards)	80,000	69,741

**Output 1.3: Adequate sanitation which meets Sphere standards in terms of quantity and quality is provided to target population**

Indicators:	Target	Actual
# of households provided with sanitation facilities	4,000	1,622

**Output 1.4: Hygiene promotion activities which meet Sphere standards in terms of the identification and use of hygiene items provided to target population**

Indicators:	Target	Actual
# of people reached with hygiene promotion activities	80,000	11,239

**Output 1.5: Hygiene-related goods (NFIs) which meet Sphere standards and training on how to use those goods is provided to the target population**

Indicators:	Target	Actual
# of households provided with a set of essential hygiene	20,000	8,421

**Progress towards outcomes**

Currently, IFRC is being supported by a German Red Cross embedded delegate to develop and implement WASH plans in Sulawesi. The WASH delegate has undertaken several assessments since arriving and has developed an



PMI continues to provide clean water to affected households throughout the operational districts. (Photo: PMI)

implementation plan relating to the plan of action of the IFRC. Field visits and monitoring are on-going to ensure that the community needs are addressed regarding water needs, pipeline issues, sanitation and others. Plans for sanitation facilities are currently being modified to complement government plans for shelter as well as for the barracks constructed by other organizations.

As of 11 March, PMI, with the support of IFRC, has provided almost 16.3 million litres of water to 17,368 households (69,741 people) across four districts thru water trucks. Clean water continues to come from the PMI Kawatuna Water Treatment Plant.

IFRC has supported PMI in providing hygiene kits to 8,421 households and jerry cans to 4,125 households.

Item	Number of households reached					PMI total	IFRC-supported
	Districts						
	Donggala	Palu	Parigi	Sigi			
Hygiene kits	1,224	2,848	1,768	2,581	8,421	8,421	
Jerry can (10L)	2,225	1,452	779	3,793	8,249	4,125	

Hygiene kits comprise 5 pieces of bath soap, 1 piece of laundry detergent, 1 bottle of shampoo, 3 tubes of toothpaste, 5 pieces of toothbrush, 20 pieces of sanitary pads, 2 pieces of towels and 1 container box.

A PMI HP team is visiting HH in the camps and villages and conducting hygiene promotion activities with the beneficiaries. As of reporting, 11,239 people (4,814 men and 6,425 women) have been reached with hygiene promotion activities.

PMI WASH team has conducted hygiene promotion as well as cleaning kit distribution and 3R (Rakita Rumpu Raala) campaign in camps and schools:

- Schools
  - SLB N 2 Palu
  - SLB ABCD Muhammadiyah Palu
  - SMP 7 Palu
  - MTSN 3 Palu
  - SDN Inpres Silae
  - SDN Balaroa
  - SDN Inpres Balaroa
  - SDN Kawatuna
  - SD Impres Kawatuna
  - SMA N1 Banawa
- PMI Integrated Camps
  - Jono Oge
  - Loli Oge
  - Loli Saluran
  - Gunung Bale

IFRC will provide sanitation facilities (1 each) to the 40 transitional shelters in Sambo. The construction of the model facility is expected to start end of March or first week of April, while the rest of the latrines is expected to be completed by end of April or first week of May.

<b>Outcome 2: Sustainable reduction in risk of waterborne and water related diseases in targeted communities in the recovery phase</b>		
<b>Indicators:</b>	<b>Target</b>	<b>Actual</b>
# of people have access to safe water	40,000	Outcome indicator will be reported in final report
<b>Output 2.1: Continuous monitoring and evaluation of water, sanitation, and hygiene situation is carried out in targeted communities</b>		
<b>Indicators:</b>	<b>Target</b>	<b>Actual</b>
# of volunteers trained in WASH	tbc	64
<b>Output 2.2: Community managed water sources giving access to safe water is provided to target population</b>		
<b>Indicators:</b>	<b>Target</b>	<b>Actual</b>
# of water sources rehabilitated (i.e. well or pipelines)	-	Not started yet
# of people provided with safe water through rehabilitated water sources	40,000	Not started yet
<b>Progress towards outcomes</b>		
PMI with the support of IFRC is addressing the needs of the increasing water supply in the next step of the intervention (recovery phase) with the set-up of small gravity water supply systems in the camps. The distribution systems will be connected to wells and village water supplies as well as with existing or planned boreholes.		
The increasing problem of faecal sludge management is currently addressed by PMI with the conversion of three older water trucks into sludge trucks. Those trucks will be used to transport the sludge from the camps to safe dumping places. Conversion of these trucks is currently postponed due to the unavailability of vacuum pumps in Palu.		



### **Protection, Gender and Inclusion**

People targeted: 80,000 (20,000 households)

People reached: 1,035

#### **Outcome 1:**

**Communities identify the needs of the most vulnerable and particularly disadvantaged and marginalised groups, as a result of inequality, discrimination and other non-respect of their human rights and address their distinct needs**

<b>Indicators:</b>	<b>Target</b>	<b>Actual</b>
<i>Does the operation demonstrate evidence of addressing the specific needs to ensure equitable access to disaster response services?</i>	Yes	Outcome indicator will be reported in final report
<b>Output 1.1: Emergency response operations prevent and respond to sexual- and gender-based violence and all forms of violence against children</b>		
<b>Indicators:</b>	<b>Target</b>	<b>Actual</b>
<i>Does the operation demonstrate evidence of compliance with IFRC minimum standard commitments to gender and diversity in emergency programming?</i>	Yes	Yes

#### **Progress towards outcomes**

The PGI component of the programmes is currently being supported by a PGI RDRT deployed for two months (until April 2019). PGI components are being considered in the plan and implementation of sectoral programmes to ensure that minimum standard commitments are incorporated in the implementation. Mapping of PGI situation, including challenges, actors and other information, has been completed. Results of this will be incorporated in the planning and implementation of interventions throughout the operation.

#### **Solar lanterns/lamps distribution**

Insufficient lighting in camps or temporary shelters may pose a serious protection concern contributing to an unsafe environment considering their locations, darkness in some sites and particularly the wash facilities. So far, 207 solar lamps have been distributed, in an effort to address these protection concerns to some extent.

#### **Minimum Standard Commitments to Gender and Diversity in Emergencies**

Mainstreaming PGI across the sectors, is an ongoing effort which aims to ensure that services provided to people reached are gender and diversity sensitive, have a protective value and tailored to be inclusive of all. Early recovery plans will ensure PGI will remain an important element to be factored in programming aspects. For example, ensuring latrines are accessible to people with disabilities, specifically people with mobility restrictions.

**Capacity building**

PMI is planning a training of trainers for CEA, PGI and Green Response to ensure that these cross-cutting issues are incorporated not only to this emergency response but also to future programmes of PMI.

**Migration and displacement**

People targeted: Managed by ICRC

People reached: 2,272 cases

**Outcome 1: Communities support the needs of migrants and their families and those assisting migrants at all stages of migration (origin, transit and destination)**

Indicators:	Target	Actual
# of people reached with services for migration assistance and protection	-	Outcome indicator will be reported in final report

**Output 1.1: Family links are restored for people separated from, or without news of, their loved ones as a result of the disaster**

Indicators:	Target	Actual
# of people reached with services for migration assistance and protection	-	2,272

**Progress towards outcomes**

All operational interventions will be undertaken in line with the Red Cross Movement Policy on Internal Displacement (2009), including assessing specific needs linked to displacement and meeting the needs of the most at risk: including both displaced communities and host communities. This is particularly where displacement becomes prolonged or protracted, and where there are barriers or delays to return or other durable solutions.

ICRC launched a family link site for people looking for family members affected to the Sulawesi earthquakes and tsunami. This include people who would like to register to inform their families that they are safe and alive. The site is available in both English and Bahasa Indonesia. The link to the site:

<https://familylinks.icrc.org/indonesia/id/pages/home.aspx>.

As of 11 March, PMI reported that a total of 2,272 cases Restoring Family Links (RFL) has been registered (supported by and in coordination with ICRC). A total of 384 cases have been closed.

**Disaster Risk Reduction**

People targeted: 80,000 (20,000 households)

People reached: not yet started

**Outcome 1: Communities in high risk areas are prepared for and able to respond to disaster**

Indicators:	Target	Actual
Community preparedness plans in place	Yes	Outcome indicator will be reported in final report

**Output 1.1: Communities take active steps to strengthen their preparedness for timely and effective response to disasters**

Indicators:	Target	Actual
# of contingency plans/early warning systems developed among target population	-	Not started
# people reached with public awareness and education campaigns using harmonized messages to reduce, mitigate and respond to identified risks	-	Not started

**Progress towards outcomes**

Activities are yet to be implemented. Information on DRR will be reported in next updates and once relevant activities start. To initiate DRR activities, a community committee will be set up or reactivated in areas with pre-existing

committees to ensure community participation in the planning and implementation, and to provide an avenue for feedbacks and information sharing. These committees will provide an entry point for PMI to implement early recovery interventions as well as DRR interventions.

In principle, as part of protecting and restoring community resilience to disasters, community-based disaster reduction activities will be undertaken by having early warning early action agents to identify local risks, vulnerabilities, capacities and actions to strengthen resilience of communities.

## Strengthen National Society

**Outcome S1.1: National Society capacity building and organizational development objectives are facilitated to ensure that National Societies have the necessary legal, ethical and financial foundations, systems and structures, competences and capacities to plan and perform**

Indicators:	Target	Actual
# of NS branches that are well functioning	5	Outcome indicator will be reported in final report

**Output S1.1.2: National Society assessed their capacity at HQ and branch level and identified areas for organizational development**

Indicators:	Target	Actual
# of branch assessed and supported on BOCA action plan	5	

**Output S1.1.4: National Society has effective and motivated volunteers who are protected**

Indicators:	Target	Actual
# of volunteers insured	100%	Will be updated in the next update
# of volunteers involved in the operation	1,329	~1,500

**Output S1.1.6: National Societies have the necessary corporate infrastructure and systems in place**

Indicators:	Target	Actual
NS has necessary infrastructure and systems in place	Yes	Yes

**Output S1.1.7: NS capacity to support community-based disaster risk reduction, response and preparedness is strengthened**

Indicators:	Target	Actual
# of NS members trained in emergency needs assessment	25	Not started yet

### Progress towards outcomes

#### Branch development

Activities under these outputs have yet to start. Discussions between the IFRC and PMI are currently underway to plan for the BOCA and other branch development activities which will include training of existing volunteers and increasing community outreach as well as technical components of emergency and long-term programming.

#### Volunteers

A total of 170 volunteers underwent on-the-job training from January to February to provide them with skills to implement the relief programmes of PMI. With support from IFRC, the volunteers were oriented on Red Cross and Red Crescent principles and codes of conduct and they were later specialized for shelter, WASH, health, mobile data collection, CEA and other components of the implementation through trainings conducted by both PMI and IFRC technical staff.

#### Necessary infrastructure and systems in place

IFRC and PMI continue to utilize the basecamp which was established in the beginning of the operation. The camp is supported with necessary equipment and facilities, including WASH, IT and 24h security service, to perform as effective as possible.

## International Disaster Response

**Outcome S2.1: Effective and coordinated international disaster response is ensured**

Indicators:	Target	Actual
% of people reached by the IFRC disaster response operations to the people affected by these emergencies	Min 5%	Outcome indicator will be reported in final report
IFRC engages in inter-agency coordination at the country level	Yes (Shelter)	Yes

**Output S2.1.1: Effective response preparedness and NS surge capacity mechanism is maintained**

Indicators:	Target	Actual
-------------	--------	--------

<i>Mechanism for effective response preparedness identified and implemented</i>	Yes	Yes
<i># of RDRT deployed</i>	Min 3	More than 3
<b>Output S2.1.3: NS compliance with Principles and Rules for Humanitarian Assistance is improved through the integration of CEA approaches and activities</b>		
<b>Indicators:</b>	<b>Target</b>	<b>Actual</b>
<i># and type of methods established to share information with communities about what is happening in the operation</i>	-	4 <sup>1</sup>
<i>#/% of complaints and feedback received and responded to by the NS</i>	-	484
<b>Output S2.1.4: Supply chain and fleet services meet recognized quality and accountability</b>		
<i>Supply chain and fleet services demonstrates quality and accountability</i>	Yes	Yes
<b>Output S2.1.6: Coordinating role of the IFRC within the international humanitarian system is enhanced</b>		
<b>Indicators:</b>	<b>Target</b>	<b>Actual</b>
<i>A coherence shelter strategy is developed in response to the earthquake</i>	Yes	Yes

### Progress towards outcomes

#### Response preparedness

IFRC has provided initial operational start up for the host national society and participating national societies and other common services such as operation centre and basecamp. At end of reporting timeframe, only two RDRT members (PGI and procurement) remain operational in Palu. The operation has since moved into longer-term staffing, with 11 delegates including for field coordination, finance and admin, logistics, procurement, PMER, shelter, health, WASH, cash-based interventions and IM.

Human Resources	Total
IFRC national staff recruited for Palu office	32
IFRC delegates recruited for Palu office	11
IFRC RDRT	2
<b>Total</b>	<b>45</b>

#### Community Engagement and accountability

<b>622</b>	<b>25</b>	<b>12</b>	<b>2,050</b>
questions and feedback received from communities through multiple communication channels	live radio talkshow broadcasts	thematic/sectoral messages ((information as aid) produced and disseminated online and offline	stickers, <b>1,050</b> banners of sectoral messages printed and distributed across affected areas.

PMI, supported by IFRC, has maintained regular two-way communication with communities through social media, radio, a hotline and face to face engagement with volunteers. From feedback received through these channels, the main concerns of people affected by the disasters remain related to the urgent needs of shelter, food, livelihood/employment and WASH.

PMI Nolelei, a weekly live radio talk-show where listeners could call in to ask questions and address concerns with guest speakers from PMI and other NGOs, UN, governmental agencies, and others. So far, 25 shows have been produced discussing the following topics:

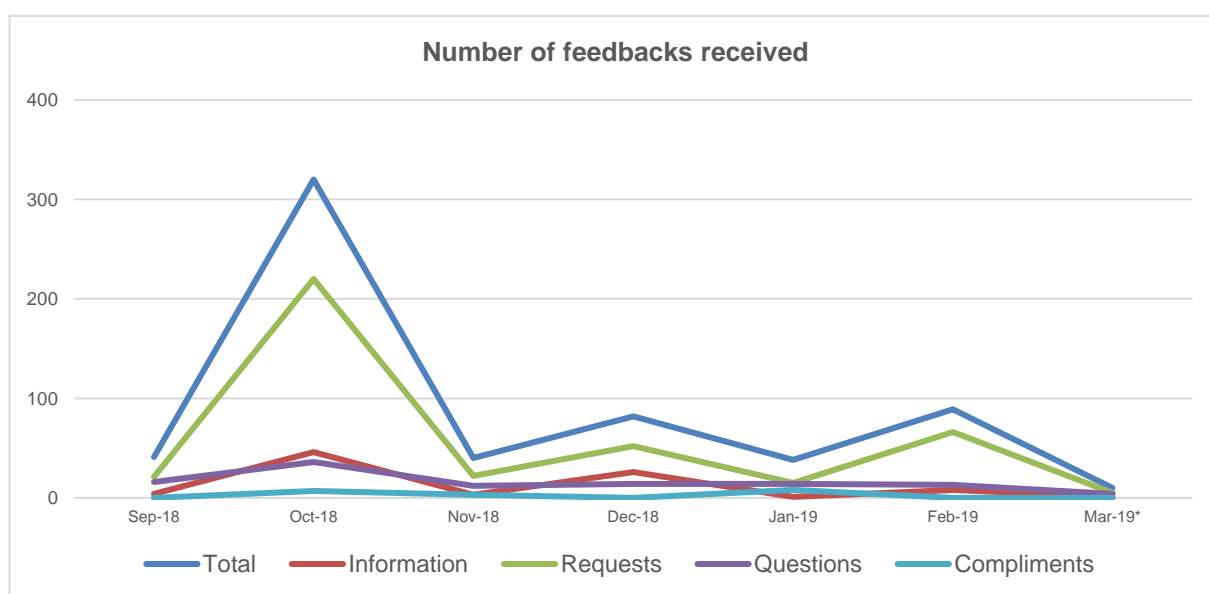
- PMI Family Tracing Services – 10 October
- PMI Services – 11 October
- PMI Services – 11 October
- Trauma Injuries – 12 October
- Psychosocial Services – 14 October
- Health Services – 17 October
- Managing Waste in the Camp for Health – 31 October
- Tsunami Impact on Fishermen – 7 November
- Diarrhea Prevention – 14 November
- Temporary Shelter – 21 November
- Health Services – 28 November
- International Volunteers' Day – 5 December
- Health Services for Recovery Phase – 12 December

<sup>1</sup> Radio broadcasts, Social media platforms including Facebook, Twitter and Instagram.

- Transition from Emergency to Recovery – 19 December
- Psychosocial Support – 26 December
- Hoax Information on Rumor of Big Aftershocks – 2 January
- WASH Campaign on No Littering – 9 January
- Code of Conduct – 16 January
- Dengue and Malaria – 23 January
- Protection from Sexual Exploitation and Abuse – 30 January
- Maintaining Hygiene of Shelter – 6 February
- Clean Water Distribution during the Recovery Phase – 13 February
- Children’s Voices – 20 February
- Recovery Plan – 27 February
- Youth Involvement – 6 March

As part of the CEA strategy to ensure that affected communities have access to information, PMI has distributed 954 solar radios (325 in Sigi and 629 in Palu) with support from the relief teams, and in collaboration with other organizations. PMI, supported by IFRC, is also producing 12 Public Service Announcements in audio and video which will be aired on Central Sulawesi stations. PMI also runs a hotline service from 0800H to 1800H managed by trained PMI volunteers.

Through these various channels, we have received over 622 feedbacks (56 per cent from men and 44 per cent from women) of which 437 (72 per cent) were immediately responded to. Of the received feedbacks, 64 per cent were for requests and 18% were questions. Most of the feedbacks were gathered through face-to-face conversations (62 per cent) utilizing mobile data collection tools, while 19 per cent were through social media and 8 per cent were through the radio shows.



\*Represents only until reporting period

PMI, together with IFRC, conducts basic CEA sensitization training to volunteers in health, psychosocial support, relief/distribution teams and district offices, and is planning to conduct the same for programme volunteers.

PMI, supported by IFRC, continues to lead the coordination of the inter-agency Community Engagement Working Group (CEWG). The joint community feedback bulletin, “Suara Komunitas”, has been produced twice while the third edition is currently under development. The CEWG is planning to support the capacity of community committees to ensure inclusive community participation in decision-making, channeling feedback and provide relevant and reliable information to community members. The CEWG is working with the provincial government’s data and information centre, as well as the programmatic sectors to develop key messages to address some of the current concerns of affected people so that it can be communicated by all relevant organizations consistently.

A feedback tracking dashboard is being planned and developed together with the Information Management (IM) team. The dashboard will provide a visual tracking and monitoring platform for feedback received which can be used to inform activities and services.

The CEA team will also provide training to programme volunteers to ensure that feedback mechanisms are promoted, managed and information to and from communities are shared.

**Logistics, supply chain and fleet services**

Logistics has been a core unit supporting the Sulawesi operation since the beginning of the year, with provision of goods and services from procurement, stock management, transportation until final distribution at the different camps managed by PMI.

**Structure:**

The PMI logistics team serves as the primary lead for logistics support related to operations in Palu in coordination with the support of the IFRC logistics team. The IFRC logistics team consists of seven members; Logistics coordinator serving as the team lead, handling both Sulawesi and Lombok operations, supported by a procurement delegate and a team of 5 national staff located in the basecamp, covering the areas of logistics, procurement, fleet and warehouse management.

The team oversees a wide variety of supply chain processes that includes, procurement, fleet, storage and transportation of relief items to distribution sites in accordance with the operation's requirements and aligned to IFRC's logistics standards, processes and procedures.

**Deliverables during the reporting period:*****Fleet management:***

To ensure compliance to set standards and best practices for the efficient and safe use of fleet assets, the team has initiated a first draft of guidelines for the use of vehicles. This is currently under review and once approved will serve as the primary guide for fleet management. A total of 7 vehicles are in use in Palu to support the operation (5 rental cars and 2 IFRC), including mobilization of PMI volunteers for relief distributions and community visits with other programs like Health and Shelter.

***Procurement:***

Due to the strict import restrictions imposed by the government, all procurements are currently being done locally. According to plans from PMI and IFRC relief teams, distribution of non-food items is expected to be completed by end of March. As at the end of the reporting period, the logistics team has initiated and completed the following procurements:

- PO for light vehicles has been issued to supplier – expected delivery May 2019
- PO for Mosquito nets has been issued to supplier – expected delivery date May 2019
- PO for 321 First Aid Kits has been issued to supplier (PMI) – expected delivery April 2019
- 50% of Water trucks have been delivered and the balance to be received by end of March 2019
- Expression of interest (EOI) advertised in newspaper for re-launching of 10 water trucks plus an additional truck
- Renewed radio show contract
- Hotline stickers purchased

***Warehousing:***

- Year-end stock count was performed in order to assure stocks were up to date and reconcile with relief distributions for proper audit trail.

***Logistics:***

In house restructuring for process improvement:

- In order to facilitate a more effective loading and delivery time, ensure adequacy of proper documentation to facilitate audit trail and compliance to procurement and background logistics documentation related to deliveries, a reorganization of the tasks and processes within the unit was undertaken. This mainly involved creating process flows which took out redundant tasks whilst assigning tasks and responsibilities for better accountability, ensuring a better service to the operation.

A supplier maintenance process was initiated during this period to improve on transparency for supplier selection and subsequently lead time for issuing POs. This involved the compilation, classification and validation of various suppliers of goods and services. This will also serve as a reliable source of information for IFRC and PMI when developing disaster preparedness plans.

**Outcome S2.2: The complementarity and strengths of the Movement are enhanced**

Indicator:	Target	Actual
Complementarity and strengths of the Movement are enhanced	Yes	Outcome indicator will be reported in final report

<b>Output S2.2.1: In the context of large-scale emergencies the IFRC, ICRC and NS enhance their operational reach and effectiveness through new means of coordination.</b>		
<b>Indicator:</b>	<b>Target</b>	<b>Actual</b>
# of RCRC coordination meetings	As necessary	Ongoing
<b>Output S2.2.5: Shared services in areas such as IT, logistics and information management are provided</b>		
<b>Indicator:</b>	<b>Target</b>	<b>Actual</b>
IM system is implemented	Yes	Yes
<b>Progress towards outcomes</b>		
<p><b>Coordination meetings</b> IFRC with PMI counterparts continue to participate in inter-cluster and sub-cluster coordination meetings as well as working groups for Health, Shelter, CEA and IM etc. A coordination meeting between IFRC and PMI officials from Jakarta and Palu held on 22 February. Provincial counterparts for IFRC in Palu were appointed by PMI. IFRC also continues to coordinate with partner National Societies regarding visits to Palu.</p> <p>Weekly operation meetings continue to be held at the basecamp with all IFRC team members, as well as the operations coordinator for PMI in the province.</p> <p><b>Information Management</b> PMI has existing IM capacity, which has been managing data collection and collating tasks in the operation. To establish effective information management system, the team has conducted district branch capacity assessment and come up with findings in relation to information management.</p> <p>IM is planning to support multiple trainings for the provincial and district offices of PMI in Central Sulawesi. IFRC is supporting to enhance this capacity by deploying an Information Management delegate for six months. The IM delegate and the IM officer are supporting ongoing activities which utilizes mobile data collection tools such as for CEA, exit surveys and beneficiary selection/validation, post distribution monitoring. The IM team is also supporting data cleaning and analysis to support PMI decision-making regarding targeting and beneficiary selection.</p>		

<b>Outcome S3.1: The IFRC secretariat, together with National Societies uses their unique position to influence decisions at local, national and international levels that affect the most vulnerable.</b>		
<b>Target</b>	<b>Actual</b>	<b>Actual</b>
<i>The IFRC secretariat, together with National Societies uses their unique position to influence decisions at local, national and international levels</i>	Yes	Outcome indicator will be reported in final report
<b>Output S3.1.1: IFRC and NS are visible, trusted and effective advocates on humanitarian issues</b>		
<b>Indicator:</b>	<b>Target</b>	<b>Actual</b>
# of media log kept and shared on a monthly basis	-	Continuous activity
<b>Output S3.1.2: IFRC produces high-quality research and evaluation that informs advocacy, resource mobilization and programming.</b>		
<b>Indicator:</b>	<b>Target</b>	<b>Actual</b>
# of detailed assessment report is produced	1	2 (recovery assessment/real time evaluation)
# of final external evaluation of the operation is conducted	1	Not started yet
<b>Progress towards outcomes</b>		
<p><b>Assessments and evaluations:</b> Findings from the joint recovery assessments were reflected in the revision of the emergency plan of action. Summary of the findings from the assessment are reflected in Operations Update #10, while the report from the recovery assessment is currently being finalized for publication.</p> <p>A Real Time Evaluation (RTE) also took place on December 2018, which assessed the ongoing IFRC response to Indonesia Earthquakes and Tsunami response (MDRID013) and its context from late July 2018 with a particular focus on how the localization model has applied and impacted the operational, cooperation and coordination mechanisms within and outside of the Movement. The report is currently awaiting management response before publication.</p> <p>Post-programme analyses will be conducted after a determined time after the programme implementation to ascertain effectiveness and efficiency of the assistance while an evaluation of the overall operation will be conducted to highlight key findings, conclusions and recommendations based on agreed Term of Reference (ToR).</p>		

**Communications**

The IFRC communications coordinator in the country is continuously gathering materials (stories, photos, videos) from operations (distributions, redemptions of vouchers, coordination visits) for social media and IFRC website/network and coordinating with local and foreign journalists for visits and general exposure of activities conducted by PMI and supported by IFRC to increase presence in local and foreign media.

The communications coordinator is also collecting related media reports for Sulawesi, Lombok and Sunda Straits operations which is being shared bi-weekly to all IFRC staff.

**Outcome S3.2: The programmatic reach of the National Societies and the IFRC is expanded.**

Indicator:	Target	Actual
<i>Work in planning and reporting to ensure effective accountability internally and externally</i>	Yes	Outcome indicator will be reported in final report

**Output S3.2.1: Resource generation and related accountability models are developed and improved**

Indicator:	Target	Actual
<i>Meeting and reporting deadlines are respected</i>	Yes	Yes

**Output S3.2.3 National Societies are supported in resource and partnership development (from both domestic markets and foreign sources).**

Indicator:	Target	Actual
<i># of meetings with diplomatic representations</i>	4	As necessary

**Progress towards outcomes**

Partners who have contributed to the IFRC Emergency Appeal can be found in the donor [response list](#). IFRC's Resource Mobilisation team has been actively coordinating with donors (via partners call and meeting) and drafting proposals to fill the funding gap in some of the sectors within the emergency appeal. The Revised Emergency Plan of Action was published on 11 March 2019, reflecting findings and recommendations from the joint recovery assessments conducted between November and December 2018.

In addition, a PMER delegate has joined late January to support monitoring of activities and liaise with sectoral teams on issuing donor reports based on donor earmarked funding for the operation and update the emergency plan of action as necessary.

**Outcome S4.1: The IFRC enhances its effectiveness, credibility and accountability**

Indicator:	Target	Actual
<i>% of operations in accordance to established guidelines</i>	100%	Outcome indicator will be reported in final report

**Output S4.1.2: IFRC staff shows good level of engagement and performance**

Indicator:	Target	Actual
<i>% compliance with IFRC HR procedures</i>	100%	100%

**Output S4.1.3: Financial resources are safeguarded; quality financial and administrative support is provided contributing to efficient operations and ensuring effective use of assets; timely quality financial reporting to stakeholders.**

Indicator:	Target	Actual
<i>% compliance with IFRC financial procedures</i>	100%	100%

**Output S4.1.4: Staff security is prioritized in all IFRC activities**

Indicator:	Target	Actual
<i># of updated security guidelines produced before second month</i>	1	1 Updates will be made as necessary

**Progress towards outcomes**

PMI and IFRC work together to safeguard an efficient operation. Operational expenses such as volunteer per diems, accommodation, transportation, communication and coordination activities are factored in. Procurement is done following IFRC standard procedures. Finance and administration support to the operation is provided to the operation and staff.

## **Budget**

Detailed expenditure as of 31 March 2019 is outlined in the [attached](#) interim financial report.

Reference documents



Click for:

- [Appeals and updates](#)

## Contact information

**For further information specifically related to this operation please contact:**

### In Indonesian Red Cross (Palang Merah Indonesia), Jakarta:

- Dr. Ritola Tasmaya, MPH, secretary general; phone: +62 217 992 325; email: [pmi@pmi.or.id](mailto:pmi@pmi.or.id)
- Arifin M. Hadi, head of disaster management; mobile: +62 812 9777 7755; fax: +62 217 995 188; email: [arifinmuhammadhadi@gmail.com](mailto:arifinmuhammadhadi@gmail.com)

### In IFRC Country Cluster Support Team, Jakarta:

- Jan Gelfand, head of CCST and Representative to ASEAN; mobile: +41 79 708 4509; email: [jan.gelfand@ifrc.org](mailto:jan.gelfand@ifrc.org)
- Rad Al Hadid, manager operations CCST Jakarta; email: [rad.alhadid@ifrc.org](mailto:rad.alhadid@ifrc.org)
- Camelia Marinescu; field coordinator in Palu; mobile: +62 817 0059 869; email: [camelia.marinescu@ifrc.org](mailto:camelia.marinescu@ifrc.org)

### In IFRC Asia Pacific Regional Office, Kuala Lumpur:

- Necephor Mghendi, head of Disaster and Crisis Unit (DCPRR); mobile: +60 12 224 6796; email: [necephor.mghendi@ifrc.org](mailto:necephor.mghendi@ifrc.org)
- Johanna Arvo, DCPRR Regional Operations Coordinator; email: [johanna.arvo@ifrc.org](mailto:johanna.arvo@ifrc.org)

### For resource mobilization and pledges:

- **In IFRC Asia Pacific Regional Office:** Nabila Nasir-Myers, coordinator, marketing and partnerships ; +60 19 2744 960; email: [nabila.nasirmyers@ifrc.org](mailto:nabila.nasirmyers@ifrc.org)

### For communications enquiries :

- **In IFRC Asia Pacific Regional Office:** Rosemarie North, communications manager; mobile: +60 12 230 8451; email: [rosemarie.north@ifrc.org](mailto:rosemarie.north@ifrc.org)

### For planning, monitoring, evaluation and reporting (PMER) enquiries:

- **In IFRC Asia Pacific Regional Office:** Liew Siew Hui, PMER manager; email: [siewhui.liew@ifrc.org](mailto:siewhui.liew@ifrc.org)

### In IFRC Geneva:

- Nelson Castano, manager, operations coordination, email: [nelson.castano@ifrc.org](mailto:nelson.castano@ifrc.org)

## How we work

All IFRC assistance seeks to adhere to the **Code of Conduct** for the International Red Cross and Red Crescent Movement and Non-Governmental Organizations (NGO's) in Disaster Relief and the **Humanitarian Charter and Minimum Standards in Humanitarian Response (Sphere)** in delivering assistance to the most vulnerable. The IFRC's vision is to inspire, **encourage, facilitate and promote at all times all forms of humanitarian activities** by National Societies, with a view to **preventing and alleviating human suffering**, and thereby contributing to the maintenance and promotion of human dignity and peace in the world.

The IFRC's work is guided by Strategy 2020 which puts forward three strategic aims:



**Save lives,**  
protect livelihoods,  
and strengthen recovery  
from disaster and crises.



Enable **healthy**  
and **safe** living.



Promote **social inclusion**  
and a culture of  
**non-violence** and **peace**.

# Emergency Appeal

INTERIM FINANCIAL REPORT

Selected Parameters			
Reporting Timeframe	2018/7-2019/3	Operation	MDRID013
Budget Timeframe	2018/7-2021/2	Budget	APPROVED

Prepared on 03 May 2019

All figures are in Swiss Francs (CHF)

## MDRID013 - Indonesia - Earthquakes and Tsunamis

Operating Timeframe: 31 Jul 2018 to 28 Feb 2021; appeal launch date: 08 Aug 2018

### I. Emergency Appeal Funding Requirements

Thematic Area Code	Requirements CHF
AOF1 - Disaster risk reduction	5,107,000
AOF2 - Shelter	8,060,868
AOF3 - Livelihoods and basic needs	7,666,000
AOF4 - Health	1,759,945
AOF5 - Water, sanitation and hygiene	3,676,945
AOF6 - Protection, Gender & Inclusion	616,000
AOF7 - Migration	661,000
SFI1 - Strengthen National Societies	3,279,000
SFI2 - Effective international disaster management	6,163,866
SFI3 - Influence others as leading strategic partners	1,448,000
SFI4 - Ensure a strong IFRC	463,000
<b>Total Funding Requirements</b>	<b>38,901,624</b>
<b>Donor Response* as per 03 May 2019</b>	<b>29,448,644</b>
<b>Appeal Coverage</b>	<b>75.70%</b>

### II. IFRC Operating Budget Implementation

Thematic Area Code	Budget	Expenditure	Variance
AOF1 - Disaster risk reduction	514,895	831	514,064
AOF2 - Shelter	9,992,969	4,255,249	5,737,720
AOF3 - Livelihoods and basic needs	3,169,288	1,089,857	2,079,430
AOF4 - Health	692,092	246,022	446,071
AOF5 - Water, sanitation and hygiene	1,357,087	435,389	921,697
AOF6 - Protection, Gender & Inclusion	267,214	22,717	244,497
AOF7 - Migration	434,240	18,219	416,021
SFI1 - Strengthen National Societies	2,637,268	329,861	2,307,407
SFI2 - Effective international disaster management	3,035,434	1,789,032	1,246,402
SFI3 - Influence others as leading strategic partners	827,431	127,499	699,933
SFI4 - Ensure a strong IFRC	2,139,334	654,442	1,484,892
<b>Grand Total</b>	<b>25,067,251</b>	<b>8,969,118</b>	<b>16,098,133</b>

### III. Operating Movement & Closing Balance per 2019/03

Opening Balance	0
Income (includes outstanding DREF Loan per IV.)	26,782,463
Expenditure	-8,969,118
<b>Closing Balance</b>	<b>17,813,346</b>
Deferred Income	3,032,590
Funds Available	20,845,935

### IV. DREF Loan

* not included in Donor Response	Loan :	1,578,621	Reimbursed :	1,578,621	<b>Outstanding :</b>	<b>0</b>
----------------------------------	--------	-----------	--------------	-----------	----------------------	----------

# Emergency Appeal

INTERIM FINANCIAL REPORT

Selected Parameters			
Reporting Timeframe	2018/7-2019/3	Operation	MDRID013
Budget Timeframe	2018/7-2021/2	Budget	APPROVED

Prepared on 03 May 2019

All figures are in Swiss Francs (CHF)

## MDRID013 - Indonesia - Earthquakes and Tsunamis

Operating Timeframe: 31 Jul 2018 to 28 Feb 2021; appeal launch date: 08 Aug 2018

### V. Contributions by Donor and Other Income

Opening Balance							0
Income Type	Cash	InKind Goods	InKind Personnel	Other Income	TOTAL	Deferred Income	
Albanian Red Cross	10,000				10,000		
American Red Cross	2,209,810				2,209,810		
Australian Government	199,632				199,632	160,170	
Australian Red Cross	462,840	11,610	7,829		482,278		
Australian Red Cross (from Australian Government*)	269,813				269,813		
Austrian Red Cross (from Austrian Government*)	1,093,037				1,093,037		
Avery Dennison Foundation	4,952				4,952		
Belgian Red Cross (Francophone)	527,112				527,112		
British Red Cross	852,323	79,353			931,676		
Charities Aid Foundation	26,624				26,624		
China Red Cross, Hong Kong branch	50,118				50,118		
China Red Cross, Macau Branch	75,730				75,730		
Cyprus Government	22,538				22,538		
Czech Government	435,614				435,614		
Czech Red Cross (from Czech private donors*)	4,260				4,260		
Danish Red Cross	80,000		22,800		102,800		
European Commission - DG ECHO	823,110				823,110		
Finland - Private Donors	57				57		
Finnish Red Cross	84,505				84,505		
German Red Cross	79,362	907,472			986,834		
Germany - Private Donors	171				171		
Government of Malta	33,719				33,719		
Grab-GP Network Asia PTE LTD	35,244				35,244		
Hewlett Packard Co. Foundation	23,710				23,710		
IFRC at the UN Inc (from Coca Cola Foundation*)	212,382				212,382	728,509	
IFRC at the UN Inc (from Facebook*)	12,356				12,356	933,493	
IFRC at the UN Inc (from Tides Foundation*)	0				0	238,363	
IKEA Foundation	15,000				15,000		
Indonesia - Private Donors	198				198		
Intercontinental Hotels Groups(IHG)	24,354				24,354		
Ireland - Private Donors	114				114		
Irish Government	285,751				285,751		
Italian Government Bilateral Emergency Fund	511,436				511,436		
Italian Red Cross	34,235				34,235		
Japanese Red Cross Society	882,708	418,015			1,300,722		
Liechtenstein Government	100,000				100,000		
Liechtenstein Red Cross	202,147				202,147		
Lululemon HK LTD	4,897				4,897		
Luxembourg Government	147,345				147,345		
Monaco Government	113,686				113,686		
Mondelez International Foundation	4,729				4,729		
Netherlands - Private Donors	114				114		
New Zealand Government	2,462,250				2,462,250		
Norwegian Red Cross	220,665	119,135			339,800		
Norwegian Red Cross (from Norwegian Government*)	851,684				851,684		
OPEC Fund For International Development-OFID	787,463				787,463		
Red Cross of Monaco	59,277				59,277		

# Emergency Appeal

INTERIM FINANCIAL REPORT

Selected Parameters			
Reporting Timeframe	2018/7-2019/3	Operation	MDRID013
Budget Timeframe	2018/7-2021/2	Budget	APPROVED

Prepared on 03 May 2019

All figures are in Swiss Francs (CHF)

## MDRID013 - Indonesia - Earthquakes and Tsunamis

Operating Timeframe: 31 Jul 2018 to 28 Feb 2021; appeal launch date: 08 Aug 2018

Income Type	Cash	InKind Goods	InKind Personnel	Other Income	TOTAL	Deferred Income
Red Cross of Viet Nam	9,966				9,966	
Singapore - Private Donors	289				289	
Spain - Private Donors	80				80	
Spanish Government	411,019				411,019	
Spanish Red Cross	234,057				234,057	
Swedish Red Cross	158,085				158,085	
Swedish Red Cross (from Swedish Government*)	1,095,117				1,095,117	
Swiss Government	800,000				800,000	
Swiss Red Cross	630,000				630,000	
Switzerland - Private Donors	200				200	
Taiwan Red Cross Organisation	136,500				136,500	
The Canadian Red Cross Society	511,584	103,268			614,852	
The Canadian Red Cross Society (from Canadian Gov	549,667				549,667	
The Netherlands Red Cross	3,544,059				3,544,059	
The Netherlands Red Cross (from Netherlands Govern	1,707,396				1,707,396	
The Republic of Korea National Red Cross	300,000				300,000	
Ultradent Products, Inc.	14,226				14,226	
United States Government - USAID	73,462	538,519			611,980	972,054
United States - Private Donors	8,692				8,692	
Western Union Foundation	52,993				52,993	
<b>Total Contributions and Other Income</b>	<b>24,574,464</b>	<b>2,177,371</b>	<b>30,629</b>	<b>0</b>	<b>26,782,463</b>	<b>3,032,590</b>
<b>Total Income and Deferred Income</b>					<b>26,782,463</b>	<b>3,032,590</b>