

www.ifrc.org  
Saving lives,  
changing minds.

# Emergency appeal final report

## Philippines: Tropical Storm Tembin

 International Federation  
of Red Cross and Red Crescent Societies

<b>Emergency Appeal Final Report</b>	<b>Operation n° MDRPH026</b>
<b>Date of Issue:</b> 30 June 2019	<b>Glide n°:</b> <a href="#">TC-2017-000182-PHL</a>
<b>Date of disaster:</b> 16 December 2017	
<b>Operation start date:</b> 19 December 2017	<b>Operation end date:</b> 31 March 2019
<b>Host National Society:</b> Philippine Red Cross (PRC)	<b>Operation budget:</b> CHF <sup>1</sup> 1,194,765
<b>Number of people affected:</b> 871,757	<b>Number of people assisted:</b>
<p><b>N° of National Societies involved in the operation:</b> PRC worked with International Federation of Red Cross and Red Crescent Societies (IFRC), Turkish Red Crescent, Qatar Red Crescent, German Red Cross and the International Committee of the Red Cross (ICRC).</p> <p>Thank you very much for the financial contribution from American Red Cross, Hong Kong branch of Red Cross Society of China, Japanese Red Cross Society, Red Cross of Monaco, Swedish Red Cross, The Canadian Red Cross Society (from Canadian Government), and the Netherlands Red Cross (from Netherlands Government).</p> <p><b>N° of other partner organizations involved in the operation:</b> Government agencies including the National Disaster Risk Reduction and Management Council (NDRRMC), Department of Social Welfare and development (DSWD), Department of Agriculture, Department of Trade and Industry (DTI), Department of Labor and Employment (DOLE), the Philippine Atmospheric, Geophysical and Astronomical Services Administration (PAGASA), the Philippine Armed Forces, the Philippine National Police Force and Local Government Units are aiding affected households. UN OCHA supported the coordination among the humanitarian sectors.</p>	

### Appeal History

- 16 December 2017:** Tropical Storm Kai-Tak makes landfall over San Policarpio. Eastern Samar. PRC mounted a response to deliver immediate assistance to affected people.
- 16 to 20 December:** As PRC continued to deliver immediate assistance to people affected by Tropical Storm Kai-Tak, a new Low-Pressure Area (LPA) forms, gains strength and turns into a tropical depression (TD) and later becomes Tropical Storm Tembin.
- 21 December:** PRC enhanced its preparedness measures for the approaching Tropical Storm Tembin and dispatched non-food items (NFIs) for 1,000 families from its Cebu regional warehouse to Mindanao. IFRC allocated CHF 31,764 from its Disaster Relief Emergency Fund (DREF) to support the National Society's readiness measures.
- 22 to 23 December:** Tropical Storm Tembin made landfall in Cateel, Davao Oriental, then tracked west over the provinces of Lanao del Norte, Misamis Oriental, Misamis Occidental and Zamboanga del Norte.
- 25 December:** IFRC launched an Emergency Appeal for 2,836,944 Swiss francs, including a DREF start-up loan of CHF 313,498, to support the PRC in meeting the humanitarian needs of 20,000 people.
- 20 January 2018:** [Operations Update no.1](#) was published.
- 24 April:** IFRC issued a [revised Emergency Appeal](#) for CHF 1,274,468 to assist 25,000 people over 12 months.
- 18 July:** [Operations Update no.2](#) was published.
- 25 October:** [Operations Update no.3](#) was published.

<sup>1</sup> CHF = Swiss francs

## A. SITUATION ANALYSIS

### Description of the disaster

On 22 December 2017, Tropical Storm Tembin (locally known as Vinta) hit Mindanao island in the Philippines, before making a second landfall on 23 December on Palawan island. The tropical storm exited the Philippine Area of Responsibility on 24 December. The storm brought heavy rainfall that caused widespread flooding as major rivers breached their banks. The heavy rain also caused flash floods and landslides in high lands and mountains across northern Mindanao and southern Palawan. Northern Mindanao is an area particularly prone to flash floods and landslides.



Relocated families begin to start anew in their new shelters. With the support from the local government, beneficiaries were able to secure land where their new shelters are established. (Photo: PRC/IFRC)

[DSWD](#) Disaster Response Operations Monitoring and Information Center reported that 871,757 people (184,278 families) were affected in 1,215 barangays across eight regions and 24 provinces, with 44 confirmed deaths (129 more pending validation) and 155 people missing. Unconfirmed reports recorded a higher death count of 266, with the highest being in Lanao del Norte at 135 and Zamboanga Del Norte at 78.

In addition to causing the loss of human lives, Tembin substantially impacted shelter, livelihoods, water, sanitation and hygiene (WASH) facilities and caused damage to critical infrastructure including roads, bridges and power transmission lines. Damages to agriculture and infrastructure were calculated at 2.1 billion Philippine pesos (PHP) or around CHF 38.9 million.

### Summary of response

#### Overview of Host National Society

Through the PRC Operation Centre, which functions 24/7, as part of its standard operating procedures, all PRC chapters in the forecasted storm-affected areas were alerted to prepare for preemptive evacuations and emergency response. The national headquarters of PRC and chapters closely coordinated with the national, regional, provincial, municipal, and city disaster risk reduction management offices (DRRMOs) and other counterparts. PRC also participated in the NDRRMC pre-disaster risk analysis and preparedness planning meetings.

Before Tembin made landfall, PRC dispatched a standard set of household items for 1,000 families to Mindanao. Immediately after landfall, response teams (143 community-based Red Cross volunteers and chapter-based Red Cross action teams) were deployed for local response. National Disaster Response Team (NDRT) members including Water Search and Rescue (WASAR) teams were deployed. PRC mobilized WASH hubs based in Mindanao with capacity for water treatment, storage and transporting. Coordination, assessment and response teams were deployed from the national headquarters to augment the chapter teams.



The recovery operation in Bukidnon worked with people who are members of the indigenous group called Matig-salug tribe. All throughout the operation, custom and cultural norm of the tribe members were considered and respected in this operation. (Photo: Maryjoy Evalarosa/IFRC)

The following details the overall PRC response:

### Details of response<sup>2</sup> by PRC to the affected population

Area of focus	Service/support provided	Accomplishment	Unit
Shelter	Clothing	278	Families
	Kitchen Set (Assorted)	17	Families
	Sleeping Kit (two blankets)	4,217	Families
	Sleeping Kit (two sleeping mats)	4,249	Families
	Sleeping Kit (two mosquito net)	4,027	Families
	Two tarpaulins	4,077	Families
Livelihoods and basic needs	Bread	300	Individuals
	Cash for Relief (PHP3,000)	1,818	Families
	Food Packs	5,096 <sup>3</sup>	Families
	Hot Meals	10,218	Individuals
Health	Blood pressure checking	750	Individuals
	First Aid	31	Individuals
	PSP	2,339	Individuals
	Rescued/Assisted (Search and Rescue)	764	Individuals
	Welfare Desks	14	Desk
WASH	Bottled Water	244	Individuals
	Hygiene Kit	4,739	Families
	Hygiene Kit (Assorted)	17	Families
	Hygiene Promotion	28,006 <sup>4</sup>	Individuals
	Jerry Can (10L)	4,249	Families
	Jerry Can (20L)	116	Families
	Water	26,069	Individuals
	Water Bladder 10K	1	Unit
	Water Bladder 5K	1	Unit
Protection, gender and inclusion	I am Alive Call	26	Individuals
	Tracing	38	Individuals
Assets deployed	Deployed teams for WASAR, assessment, welfare, health, WASH and relief		
	Two units of water tankers deployed in Cagayan de Oro and Lanao del Sur		
	Two units of water bladder (5,000 litres) installed in Cagayan de Oro		

For the map of PRC response, click [here](#)

### Details of response by PRC to the affected population for the recovery phase

Area of focus	Service/support provided	Accomplishment	Unit
Shelter	Shelter assistance	370	Households
Livelihoods	Household livelihoods assistance	254	Households
	Community-managed livelihood projects	3	Associations
WASH	Latrines (integral component of shelter)	340	Households
	Water sources/supply	3	Locations
DRR	CBDRRM	8	Communities

For the recovery phase, IFRC Appeal is supporting PRC on its implementation in Bukidnon and Zamboanga del Norte.

### Overview of Red Cross Red Crescent Movement in country

PRC worked with the IFRC, ICRC and nine Partner National Societies in the country, namely American Red Cross, Australian Red Cross, Canadian Red Cross, Finnish Red Cross, German Red Cross, The Netherlands Red Cross, Norwegian Red Cross, Spanish Red Cross, and Qatar Red Crescent Society. For this operation, German Red Cross, Turkish Red Crescent and Qatar Red Crescent bilaterally supported PRC.

ICRC were an active partner in line with their mandate to protect and assist people affected by armed conflict and other situations of violence. It cooperated closely with the PRC on various protection, assistance and prevention activities in the Mindanao region. Lanao Del Sur, Marawi City and surrounding areas affected by the conflict in 2017 were affected by Tembin.

IFRC has a country office in the Philippines, which is supporting PRC in planning of this operation and in coordination with stakeholders. IFRC closely monitored the situation and mobilized staff to provide technical support to PRC as well as coordination with other agencies via the Humanitarian Country Team (HCT).

<sup>2</sup> This table summarises the whole PRC response. The items reported in this table that are covered by the Emergency Appeal are held in Section C.

<sup>3</sup> 3,947 families with (2-3 food ration) and 1,149 families with assorted food packs.

<sup>4</sup> PRC WASH Services update as of 3 October 2018.

## **Movement Coordination**

The National Society maintained close coordination with in-country Movement partners and continued to provide updates. PRC ensured that all Movement partners were fully informed about the situation and plans. IFRC Country Office was supporting PRC in disseminating updates to Movement partners with in-country presence and coordinating with the Asia Pacific Regional Office (APRO) in Kuala Lumpur in accordance with the IFRC Secretariat's Operational Response Framework. The Country Office was also in close contact with ICRC on any security-related considerations. PRC convened a coordination meeting on 24 December, in which all Movement components were represented. In addition to coordinating with Movement partners, PRC assigned dedicated personnel to represent the National Society in NDRRMC meetings.

## **Overview of non-RCRC actors in country**

### ***Coordinating with the authorities***

As auxiliary to the public authorities, PRC maintained a strong relationship with government bodies through participation or collaboration with (i) the NDRRMC; (ii) the provincial, municipal and barangay (village) disaster risk reduction and management councils; and (iii) the local government units defined in the Disaster Risk Reduction and Management Act from 2010. PRC participated in NDRRMC meetings and coordinated with the DSWD and Department of Health.

PRC participates in NDRRMC meetings and coordinates with the Department of Social Welfare and Development (DSWD), Department of Health, and the NDRRMC at regional, provincial, municipal and barangay levels. PRC has assigned dedicated personnel who continue to represent the National Society in NDRRMC meetings. PRC is also participating in the NDRRMC Pre-Disaster Risk Analysis (PDRA) meetings and preparedness planning meetings.

### ***Inter-agency coordination***

At country level, PRC and IFRC consistently participated in meetings of the Humanitarian Country Team (HCT) held both during disasters and non-emergency times. PRC and IFRC were involved in relevant government-led cluster information sharing, planning, and analysis at all levels while IFRC supports PRC coordination efforts through representation in other relevant clusters.

IFRC is co-leader of the Shelter Cluster with government lead agency Department of Social Welfare and Development (DSWD). The IFRC Regional Shelter Coordinator as the ad-interim focal point in country coordinated with OCHA and sector partners to provide strategic and technical guidance for the response based on participation to inter-cluster coordination meetings, inter-agency rapid needs assessments in the affected areas and sectoral strategic framework development.

## **Needs analysis and scenario planning**

### **Needs analysis**

Based on the rapid and detailed assessment priorities were identified as follows: food and non-food items, water, health and welfare services, and livelihoods and basic needs, shelter and disaster preparedness. Refer to [revised Emergency Plan of Action \(EPoA\)](#) and [Operations Update No.2](#) for further details on needs analysis, operational risk assessment and scenario planning.

### **Targeting**

In its responses, PRC ensured that programmes were aligned with its own as well as IFRC's commitment to take into account gender and diversity, for example by targeting women-headed households, pregnant or lactating women, and men and boys made vulnerable by disasters; households with persons with disability, older people, those suffering from chronic illnesses, children-headed households, families with children under five years old, families that did not received any or sufficient assistance from the government or other organisations, those belonging to the socially vulnerable households and those who lack relevant resources to cope with the basic humanitarian needs on their own. These groups were considered according to the level of impact.



When Vinta struck, it brought widespread flooding in many areas. Shelter and livelihoods were amongst of the sector severely affected (Photo: PRC/IFRC)

Geographical targeting was based on the data and information from the Government and validation of PRC assessment teams. Priority was provided to areas most affected, most vulnerable and with highest needs. Beneficiary selection was made through community participatory approach in which the PRC worked closely with community leaders to select the beneficiaries following the set selection criteria. This was followed by validation through community participation whether

the pre-identified beneficiaries met the selection criteria. Once validated, beneficiaries were given a PRC beneficiary card with their individual and household members' names. The card formed the basis for recognition of bearers as beneficiaries of the PRC. During implementation, PRC volunteers counterchecked the names on the card if they were listed in distribution sheets. Upon receipt of any item or assistance, beneficiaries signed award sheets or participation lists. With these records, cases of double-assistance or double-counting was eliminated.

Implementation of Tembin operation focused in five different provinces:

Province	Phases of the operation
Bukidnon	Relief and recovery
Lanao del Norte <sup>5</sup>	Relief and recovery
Lanao del Sur	Relief
Zamboanga del Norte	Relief and recovery
Zamboanga Sibugay	Relief

## B. OPERATIONAL STRATEGY

### Proposed strategy

This operation supported the needs of 26,069 people (5,213 households) of the most vulnerable affected communities with appropriate immediate and medium-term assistance in a timely, effective, and efficient manner, as well as accompany them to recover from the impact of the typhoon and increase their resilience to future shocks for 15 months.

The Emergency Appeal supported components of the PRC relief and recovery plans of action in the following sectors:

1. **Immediate household needs** assistance, including distribution of **essential household items** and **unrestricted cash grants**.
2. **Livelihoods** support for families to restart their **income earning** activities and **small enterprise** revival, through cash transfers.
3. **Shelter and settlements** assistance to support access to safer living conditions during the initial states of the emergency through the provision of tarpaulins, mosquito nets, blankets, followed by cash transfer and shelter solutions to prioritize self-recovery, and always accompanied by technical support and awareness sessions on build back safer techniques. For the early recovery shelter assistance, based on the evolving needs on the ground, the support was provided to the beneficiaries in the form of cash and in-kind corrugated iron sheets plus labour support and technical assistance.
4. **Health** interventions focusing on **psychosocial support, epidemic control, and health promotion**.
5. **Water, sanitation and hygiene promotion** interventions focusing on improving access to safe water, access to improved sanitation, and the sustainable reduction of risk to diseases (water-borne, vector-borne and water-related) in affected communities.
6. **School and community preparedness and disaster risk reduction**.

As with all PRC-led operations, this Appeal supported of the overall PRC Plan of Action and follows key strategies:

- A **Movement-wide approach**: PRC was responsible for the overall coordination and implementation of the disaster response operation, supported by components of the Movement.
- **Cash transfers**: Cash transfers contributed towards the empowerment of the affected population by giving them the flexibility to prioritize their own recovery needs.
- Establishment of mechanisms to facilitate two-way **communication** with, and ensure **transparency** and **accountability** to, disaster-affected people.
- **Integrated programming and resilience-building**: Early recovery interventions addressed a broad range of sectors, to provide for the needs of communities and contribute to their improved resilience.
- **Factoring lessons from previous operations**: PRC drew on lessons from previous responses in Mindanao and the current response in Marawi City.
- The Emergency Appeal supported **National Society capacity enhancement** at chapter and national levels.

The operation was underpinned by a commitment to quality programming that involved:

- Continuous and detailed assessments and analyses to inform the design and ongoing implementation of the programme.
- Ongoing process of adjustments based on these assessments.
- Adherence to protection, gender and inclusion measures, with focus on disability inclusive response.
- Establishment of mechanisms to facilitate two-way communication with, and ensure transparency and accountability to, disaster-affected people, and highlighting the nature of communication and information as a life-saving mechanism.
- Management and delivery of the programme informed by appropriate monitoring and evaluation.

<sup>5</sup> This is the operational are of German red Cross where IFRC will also provide some support on their shelter intervention.

- Market assessments integrated with the detailed assessment to inform feasibility and needs for cash-based interventions.
- An after-action review on cash-based interventions, particularly on the multi-purpose cash grant, to measure impact and timeliness of cash transfer programmes.

## Operational support services

### Human resources

All relief and recovery activities were implemented by PRC chapters utilizing existing staff and Red Cross 143 volunteers, Red Cross Action Teams (RCAT134) and NDRT from other chapters. A total of 313 PRC staff and volunteers were mobilized to support the operation. IFRC country office supported PRC by providing technical and support service staff to ensure accountability and compliance with regards to the DREF. There were two international staff providing surge support for this operation: Interim Field Coordinator and Surge Disaster Management Delegate.

### Communication

See details of communications in Influence others as leading strategic partner section

### Information Technology and Telecommunications

The appeal covered costs of mobile phone credits and internet cards for the chapters involved. PRC ensured that staff and volunteers involved in the operation were accessible via mobile phones. The chapters had sufficient computer software and hardware capacity, and support for the operational requirements.

### Security

See details of security in Effective, Credible and Accountable IFRC section

### Planning, Monitoring, Evaluation and Reporting (PMER)

Monitoring teams visited the affected communities. All necessary assessment results were considered on the implementation of the plan. Post distribution monitoring survey were also conducted for the NFI, cash, livelihoods and shelter assistance. A programme evaluation was conducted followed by a lesson's learnt workshop organized among PRC NHQ technical staff and Chapter leads.

### Administration and Finance

See details of Administration and Finance in Effective, Credible and Accountable IFRC section

### Logistics and Supply Chain

See details of Logistics and Supply Chain in International Disaster Response section.



Ezra Knight "Jai-jai" Acebedo, a proud PRC volunteers in Bukidnon Chapter. (Photo: Maryjoy Evalarosa/IFRC)

**A volunteer's insight:** When I started to live with the community (operational area), we formed a strong bond of closeness with them (beneficiary and wider community people) and we understand them better. I also came to realize what I am, as a volunteer. It was not just about the effort, like walking for 4-6 hours every week, it was not just about fun and travels. I realized; it was more about my contribution in changing the lives of people.

The Vinta project was very fulfilling because of the smiles and gratitude coming from the beneficiaries, because we helped them improved their life. They have expressed it well to us since we were the ones who were with them, since we have lived with them. I have improved my communication skills. I am now more comfortable in organizing community meetings.

I will miss my assigned operational area. At the same time, I am very happy for them (beneficiary). And I am very proud of my team.

## C. DETAILED OPERATIONAL PLAN



### Shelter

People reached: 10,995<sup>6</sup>

Male: 5,498

Female: 5,497

Indicators:	Target	Actual
# of people targeted/reached with safe and adequate shelter and settlement	10,000	10,995 <sup>7</sup>
# of households provided with emergency shelter and settlement assistance	2,000	1,793 <sup>8</sup>
# of households provided with shelter recovery assistance	370 <sup>9</sup>	370
# of households provided with technical support and guidance, appropriate to the type of support they receive	2,000	2,171 <sup>10</sup>

### Narrative description of achievements

**Emergency shelter and household NFIs<sup>7</sup>:** Details of the household items distributed during the emergency phase are held in the following table:

Breakdown of households provided with household items by PRC<sup>11</sup>

Province	Blanket		Sleeping Mat		Tarpaulin	
	Total	IFRC supported stock	Total	IFRC supported stock	Total	IFRC supported stock
Bukidnon	732	232	732	232	732	232
Lanao del Norte	1935	479	1967	511	1792	336
Lanao del Sur	550	550	550	550	553	553
Zamboanga del Norte	500	500	500	500	500	500
Zamboanga Sibugay	500	-	500	-	500	-
<b>Total</b>	<b>4,217</b>	<b>1,759</b>	<b>4,249</b>	<b>1,793</b>	<b>4,077</b>	<b>1,621</b>

The priority Provinces were identified as Bukidnon, Lanao del Norte, Lanao del Sur, Zamboanga del Norte and Zamboanga Sibugay and priority Municipalities were identified as Bacolod Kalawi, Madalum (in Lanao del Sur); San Fernando (in Bukidnon); Kapatagan, Lala, Maigo, Salvador, Sapad, Tubod (in Lanao del Norte); Gutalac, Labason, Liloy, Salug and Siocon (in Zamboanga del Norte).

Through the appeal, IFRC supported the mobilization of PRC staff and volunteers, logistics and transportation for all household items distributed. Out of all the household items distributed 1,759 sets of blankets, 1,793 sleeping mats and 1,621 tarpaulins came from IFRC in country Disaster Preparedness stocks that were later replenished. The remainder of household items came from PRC's own Disaster Preparedness stocks including those supported by Australian Government Department of Foreign Affairs. Alongside the distribution of tarpaulins to 4,077 families, a basic orientation on their use and maintenance as emergency shelter materials was conducted as part of the standard operating procedures for PRC.

### Shelter Recovery:

There were three parts to the shelter recovery program:

- 370 shelters built in Bukidnon, some of which were in resettlement areas
- Safe shelter awareness carried out in Bukidnon and Zamboanga Del Norte
- Material contribution to support 132 houses in Lanao Del Norte - managed by the German Red Cross

**Bukidnon:** Based on the detailed needs assessment Bukidnon was identified to receive recovery shelter assistance. Most of the identified beneficiaries are members of an indigenous group called Matig-salug tribe. The Matig-salug, which literally means "from the river," is a tribe from the mountains of Davao, Bukidnon, and North Cotabato. They

<sup>6</sup> Total number of people reached is based on the average five person per household calculation by Philippine Statistics Office.

<sup>7</sup> Total number of people is based on: 8,965 people provided with non-food items, 1,850 for shelter and 180 carpenters.

<sup>8</sup> Many of the pre-identified beneficiaries by PRC received sufficient enough support from the government, hence not all targeted with support were reached.

<sup>9</sup> Target has been increased from 200 to 370 based on the actual needs on the ground.

<sup>10</sup> Emergency shelter for 1,621 households and shelter recovery for 550 households.

<sup>11</sup> Validation for the total number of non-food items distributed is on-going. Final figure will be reflected in the next report.

live in some of the remotest and underserved parts of Bukidnon and are among the poorest communities in Mindanao.

The Municipality of Kitaotao was identified as being hard hit by the storm and had received limited support to recover leaving many families in a very vulnerable position. According to the latest census, Kitaotao has a population of 50,260 people, density of 64 people/km<sup>2</sup> and a high poverty rate. It's a mountainous area many parts inaccessible by vehicles and many areas with no cellular phone coverage. The Dept of Health categorises Kitaotao as a Geographically Isolated Disadvantaged Area (GIDA). This refers to communities with vulnerable population physically and socio-economically separated from the mainstream. Physical factors which contributes to their vulnerabilities include isolation due to remoteness, harsh weather conditions and transportation difficulties, mostly with no direct access by vehicle. For socio-economic factors, vulnerabilities are attributes to high poverty incidence and the communities are in areas with security risks.

Based on the detailed assessment four Barangays were targeted for recovery support: Digongan; Panganan; Kiulom; and Sinuda. Geographically, these four barangays, which is around 70 kilometres from the municipal town, are situated in mountainous areas and the farthest can only be accessed by foot. PRC/IFRC volunteers and staff needed to travel several hours on foot, cross rivers and mountain paths to do regular monitoring. From the end of the road access the staff and volunteers had to walk around 1 hour to reach Digongan, 1 hour to reach Panganan, then another 3 hours traversing mountain paths to reach the third barangay of Kiulom. To reach the fourth and last barangay of Sinuda, it took 4-5 hours of walking. For monitoring, staff and volunteers would stay for several days in the community to lessen time it took to travel.

The barangays targeted have previously suffered from repeated floods and damage to their homes. Many of the families requested to be resettled in safer areas that were above those normally flooded. Safe land was identified within the ancestral domains by the community and local Government and checked by PRC and IFRC engineering teams to ensure the areas were appropriate and safe. As these were resettlements, they also requested for support on sanitation and water supply.

The methodology was based on cash transfer where the selected households were provided with cash grants to buy materials for the shelters in the local markets. Support was given to each household as follows:

- PHP 27,000 (CHF 540) cash for shelter materials.
- PHP 6,400 (CHF128) labour costs for skilled and trained labour - all carpenters mobilized for the recovery operation were insured under the Membership and Accident Assistance Benefit (MAAB) of PRC.
- 10 pcs corrugated iron sheets (which was procured internationally with value of about PHP6,000 (CHF120) - a total of 3,824 pieces of CGI sheets, donated by American Red Cross, were sent to Bukidnon for the shelter assistance.

The community made significant contributions sourcing timber, sand and gravel, labour and logistics arrangements. The original design of the shelter was presented during community meetings where selected households, elders and the Barangay Recovery Committee<sup>12</sup> (BaReCom) were consulted and actively participated to have a shelter design that was culturally acceptable to the community. The breakdown of the shelter by Barangay was as follows:



Relocated families begin to start anew in their new shelters. With the support from the local government, beneficiaries were able to secure land where their new shelters are established. (Photo: PRC/IFRC)



I am Ronie Querquez, one of the shelter beneficiaries from Red Cross. The day Vinta struck, it was early in the morning. We saw the flood waters rush towards our houses. Me and my neighbours started to get really worried on our situation. In an instant, our homes were washed away. People started crying. We were worried about where to go and where to live. Our income from farming decreased after Vinta. We struggled to find enough food for our families. We are thankful when the Red Cross came. They helped us without a second thought. Even if we live in a very far area. They helped us build our new homes. They have reached us. (Photo: PRC/IFRC)

<sup>12</sup> See SFI 1 for details of Barangay Recovery Committee (BaReCom).

### Breakdown of shelter beneficiaries in Kitaotao, Bukidnon

Digongan	Panganan	Kiulom	Sinuda	Total
25	166	125	54	370

Pilot shelters were constructed and they served both as “on-the-job training” for members of the shelter project team, the local builders and carpenters, and as a visual demonstration of safer construction techniques to households, wider community and BaReCom. The pilot construction was led by PRC and IFRC project engineers. Construction of individual shelters were then closely monitored by the shelter project team to ensure that build back better techniques were incorporated. Members of the BaReCom were also there to support the monitoring. They also provided valuable information to the beneficiaries and non-beneficiaries alike.

**Safe shelter awareness:** For the recovery phase of shelter assistance in Bukidnon, safe shelter awareness orientation was provided for the carpenters and masons, along with a representative from the households selected to ensure that the build back safer techniques were incorporated into the shelter construction and that knowledge was transferred to the community. This will further increase resilience of the whole community. This equates to 370 sheltered families, with additional carpenters and community members for a total of at least 550 members. 16 trained PRC staff and volunteers and an IFRC engineer supervised and supported the project.



During the orientation on the eight key messages, carpenters were also provided with printed copies on the information, so they can refer to it every time they needed to. (Photo: PRC/IFRC)

**Zamboanga Del Norte:** In April 2018, a Participatory Approach for Safe Shelter Awareness (PASSA) workshop Training of Facilitators was conducted in Zamboanga del Norte for chapter staff and volunteers. There were 16 participants (six females and 10 males) attended the workshop. The workshop aimed to introduce the concept of disaster risk reduction by understanding about community hazards, risk, vulnerability and capacities. Communities in Zamboanga Province received shelter support by the Government and the training provided by PRC in safe shelter repair complimented this Government action.

**Lanao Del Norte:** In coordination with PRC, German Red Cross and the local government unit, the Appeal supported the shelter programme in Barangay Dalama, Tubod, of Lanao Del Norte. PRC supported the provision of door panel and labor cost for 125 houses.

PRC, with support from IFRC, is currently drafting the **Housing, Land and Property (HLP) Strategy** which would become an integral part of every shelter assistance operation. For this operation, PRC tested some parts of the draft strategy for the shelter assistance and oriented the shelter beneficiaries about security of tenure. PRC coordinated with the local government unit (LGU) to discuss the issue of relocation and land tenure. The LGU assisted the beneficiaries to acquire the land. They also supported the hauling of shelter materials from the supplier to the main drop off points for the materials. For the advocacy work, the PRC legal team conducted a community visit and discussed the intentions and objectives of PRC in providing awareness about HLP, which is to help ensure that they are aware of their land and housing rights and “protected” from eviction or other disputes around land ownership/occupation. The importance of understanding rights over shelter and land (tenure status) was explained as well as the importance of having a clear documented agreement on shelter and land rights between landowner and beneficiary, eliminating the risk of evictions.

### Challenges

For relief one of the main challenges was the wide geographical spread of the response and in some cases the areas were very difficult to access.

For shelter in Zamboanga Del Norte during design stage of the recovery project the local government allocated their shelter assistance, hence PRC had to change their response from providing cash support to instead providing software support to complement the governments activities.

In shelter recovery in Bukidnon in the first few weeks of the shelter project, progress of shelter construction was slow due to the limited number of carpenters. The solution was found during coordination, when the local government unit offered to outsource carpenters from neighbouring barangays.



Shelter beneficiaries used a raft made from banana stem to haul the CGI sheets from the main drop off point to the relocation site. (Photo: PRC/IFRC)

The resettlement sites were very far from the main market making access difficult. Beneficiaries hauled their shelter materials through a raft made of banana stems. Hauling materials often around 4-6 hours from the main drop off int by road to the resettlement area - depending on the water level from the river.

Approval for the beneficiaries to source lumber took some time but with the support of the Local Government and BaReCom approval was given by the DENR.

### Lessons Learned

For **relief items** a post distribution monitoring (PDM) survey for cash and NFI distribution was conducted with a total of 674 respondents (57 per cent female and 43 male).

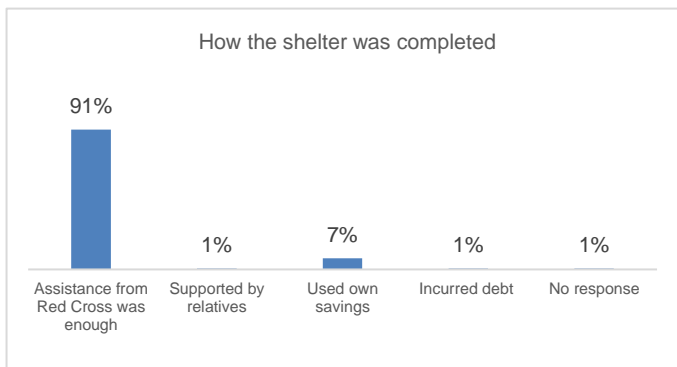
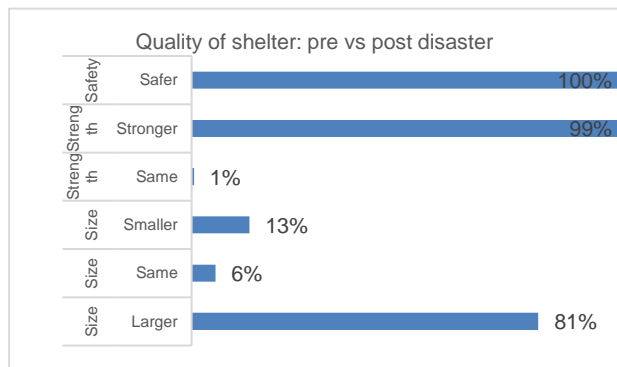
99 per cent	satisfied with the quality blankets, mosquito nets, sleeping mats, hygiene kits, jerry cans
99 per cent	found the blankets, mosquito nets, sleeping mats, hygiene kits, jerry cans and/or kitchen sets useful
100 per cent	used the items at home
98 per cent	satisfied with the quality of the tarpaulin
100 per cent	satisfied with the quality of the packaging of the item

For **shelter recovery** a PDM monitoring survey was conducted for the shelter assistance. Highlights of the results are as follows:

Questions	Don't Know	No	No response	Yes
Do you understand how you were selected to benefit from this programme?	1%	11%	1%	88%
Do you feel that the beneficiaries deserved to be selected?	1%	2%	-	97%
Do you feel that people / households were excluded when they should have been included?	2%	44%	1%	53%
In exchange for being included in the distribution, did you have to pay any fee or give favour?	1%	99%	-	-
Do you know of any households that had difficulties accessing the program?	3%	79%	1%	18%
Are you living in your newly constructed house?	-	1%	-	99%
Do you think that the cash grant received was enough to repair your house?	-	8%	-	92%
Did you spend extra money for the construction of your new house?	-	75%	-	25%
During the distribution, were all your needed shelter materials available in the market?	-	2%	98%	-
Were the materials you bought in good quality?	-	6%	94%	-
Are you happy with the quality of the CGI sheets you received?	-	-	-	100%
Uses the CGI sheets for roofing	-	-	-	100%
Were you informed about the items / amount you were supposed to receive?	1%	2%	-	98%
Did you feel like you received a proper orientation about the programme?	3%	2%	-	96%
Did the assistance cause any tension within the family?	1%	99%	-	1%
Did the assistance cause any tension with other members of the community who were not selected as beneficiaries?	2%	96%	-	2%
Did the Shelter Assistance help you recover after the disaster?	-	-	-	100%
Would you recommend the PRC-SA programme for future responses?	-	1%	-	99%
<b>Safe shelter orientation</b>				
Have you or a family member attended a safe shelter awareness orientation?	2%	13%	-	85%
Do you think that the orientation provided by the PRC was enough?	3%	7%	1%	73%
Do you think the safe shelter awareness helped you in the construction of your shelter?	3%	1%	1%	80%
Did you receive any information materials on how to build a sturdy shelter?	2%	2%	-	81%
If yes, was it helpful?	-	1%	-	80%

On the question “do you feel that people/households were excluded when they should have been included?”, this relates to the number of people who were considered outside the selection criteria. For example, people whose shelters were only partially damaged as the programme only targeted people with totally damaged shelters.

When respondents were asked for the reason why they thought there were people who have “difficulties accessing the program” on analysis their responses were directed at their own difficulties in the program not others. For example, the difficulties they faced in hauling the shelter materials long distance to the farthest barangays or getting to the distribution’s points because they were elderly, etc.



Prior to the disaster, 92% of their shelters were made from light materials. 7% were a combination of concrete and light materials and 1% were concrete. Overall, most of the respondents believed that the quality of their shelter has improved in terms of size, strength and safety compared to their old shelters.

96% of the respondents confirmed they had relocate for safety reasons to a safer location.

To complete the shelter, 91% reported that the assistance from PRC was enough. The rest reported that they have complemented the assistance by other means to complete the shelter construction.



## Livelihoods and basic needs

**People reached: 10,720**

Male: 5,360

Female: 5,360

Indicators:	Target	Actual
# of people who have enough food/cash/income to meet their survival threshold	10,000	10,720 <sup>13</sup>
# of people reached with food assistance	2,500	25,480 <sup>14</sup>
# of households supported with in-kind assets or cash or vouchers for starting/strengthening economic activities	300	330
# of households reached by public awareness and education on sustainable livelihoods	300	330
# of households reached with cash for basic needs (unconditional cash grants)	2,000	1818

### Narrative description of achievements

**Food assistance:** PRC distributed food packs to a total of 5,096 families (3,947 families with 2 to 3 days food ration and 1,149 families with assorted food packs) across 88 barangays in the regions of ARMM, Zamboanga Peninsula, Northern Mindanao, Davao Region and SOCCSKSARGEN. Furthermore, 10 different chapters from Visayas (Bohol and Cebu) and Mindanao (Bukidnon, Compostela Valley, Davao del Norte, Davao del Sur, Lanao del Norte, Misamis Oriental, Surigao del Norte and Zamboanga del Norte) provided hot meals to 10,218 individuals inside evacuation sites.

**Multipurpose cash grants:** As part of the relief phase, multipurpose cash grants to help the affected people obtain priority needs were provided in the provinces of Bukidnon, Lanao del Norte and Zamboanga del Norte. A total of 1,818 households (9,090 people) were provided with PHP 3,000 each (CHF 60). This value is based on the equivalent cost of a 10-day food basic for an average family and/or ten days labour at the minimum rate.

<sup>13</sup> 1,818 unconditional/multipurpose cash grants, plus 254 HLA and 72 CMLP.

<sup>14</sup> Overall accomplishment of PRC. This Appeal supported the mobilization cost.

### Breakdown of households provided with unrestricted unconditional cash grants through the IFRC EA

Province	Municipality	Barangays	No of households reached
Bukidnon	Kitaotao	4	378
	San Fernando	6	83
Lanao del Norte	Salvador	11	294
	Tubod	1	115
Zamboanga del Norte	Baliguian	14	307
	Godod	6	32
	Gutalac	16	264
	Labason	6	86
	Leon Postigo	10	96
	Salug	7	163
<b>Total</b>		<b>81</b>	<b>1,818</b>

The cash modality was implemented according to recommendations from the market analysis conducted by the assessment team which reflected the availability of and access to a functional market. The disbursement of cash grant was done through a financial service provider - PHILPOST.

#### Early recovery

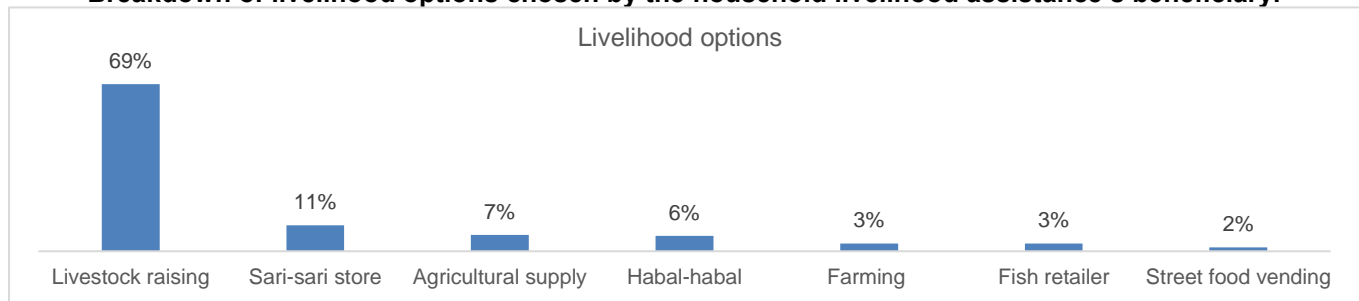
Livelihoods in the early recovery phase was provided as follows:

- Zamboanga Del Norte, Gutalac: 254 household provided with livelihoods assistance grants
- Bukidnon, Kitaotao: 3 communities provided with community managed livelihoods projects
- Zamboanga del Norte and Bukidnon: 750 households provided with vegetable seeds.

**Household Livelihoods Assistance (HLA):** A total of 254<sup>15</sup> beneficiaries were provided with HLA in four barangays in the municipality of Gutalac, Zamboanga del Norte. The total grant of PHP 10,000 (CHF200) was provided in two tranches: 60 per cent and 40 per cent respectively.

The beneficiaries are asked to make proposals for livelihood activities that were reviewed and approved by the PRC trained staff and volunteers. The approval of the proposal was based on the capacity and experience of the beneficiaries and proposal feasibility. Most of the beneficiaries opted for livestock raising which fits to their existing skills and capacities. Many of the beneficiaries opted for pig raising since they had the experience, pigs are easy to rear and there was a good local.

#### Breakdown of livelihood options chosen by the household livelihood assistance's beneficiary.



16 17

<sup>15</sup> Figure is based on the total number of households who were able to receive the full cash grant

<sup>16</sup> Sari-sari store is a small family run convenience store which is common in the Philippines.

<sup>17</sup> Habal-habal is a two-wheeled single motorcycle used as public transportation especially in areas with narrow roads and in steeper and rougher terrains.

**Community-managed livelihoods projects**

**(CMLP):** The livelihood support that has been implemented in the municipality of Kitaotao in Bukidnon province was based on the community managed livelihoods projects (CMLP) approach where there is an existing association within the community or a new one is set up to manage their own livelihoods activities. To be selected, the community needs to pass the criteria based on the capacity assessment conducted by PRC. Three associations were selected and registered in the Department of Labour and Employment. Each appointed a chairperson, secretary, treasurer and members. Each association were supported to open bank accounts to receive the CMLP cash grants.



Members of the association in Digongan set up the milling machine for their community-manage livelihood programme. **(Photo: PRC/IFRC)**

The officers and members of the association are composed of corn farmers, community leaders, representatives from the elderly and women’s groups that are willing to be trained and implement the project in the community. No barangay officials and traders were permitted to be part of the association as per the DOLE requirements.

Three communities (Digonga, Kiulom and Sita) submitted proposals and were eventually supported by PRC after the validation was conducted by PRC technical staff and LGU counterparts that focused on the cost efficiency and effectiveness, budget availability, and its potential for scale up and sustainability. The three associations were supported by PRC with technical training on financial literacy and organizational development to ensure that while the group is working to address issues around livelihoods, the capacity of the association is being enhanced as well.

Guided by PRC and IFRC technical staff, communities were linked with the local government units, such as the Municipal Agriculture’s office, to select the best and most sustainable type of support to be provided. Association members were involved in project design and planning, implementation and monitoring on the type of livelihood option selected. PRC and IFRC technical staff on the ground supported the association in terms of, but not limited to, work plan, human resource plan, budget details and coordination with involved government offices.

One of the most pressing problems identified by the communities was the lack of livelihood opportunities. Corn cultivation is one of the main sources of income in Kitaotao, but more frequent droughts had impacted on the crop yield and community members are often indebted to the suppliers. During harvest a large portion of their earnings are spent on transportation to process their produce. With these challenges, the community proposed to have activities that would provide additional income to the farmers and generate jobs for others. The breakdown of CMLP’s are as follows:

**Breakdown of associations to be supported and their livelihood ventures**

Community	Name of association	No. of members	Type of livelihood
Digongan	Digongan Matigsalug Corn farmers’ Association	25	Mobile corn sheller and drier
Kiulom	Kauswagan Alang sa Lumad Association	28	Corn/rice mill and solar drier
Sinuda	Sita-Matigsalug Abaca Growers Association	23	Abaca fiber production

**Digongan Matigsalug Corn farmers’ Association:** The mobile rice mill of barangay Digongan is fully operational and can provide jobs to some community members such as a driver, operator and helpers. Because the mobile rice mill can be taken to the farthest barangays more of the wider community can benefit due to the savings they make on the reduced transportation costs.

**Kauswagan Alang sa Lumad Association:** Due to the new corn/rice mill in Kiulom bought through the CMLP community members can mill their rice and corn much quicker than previously. The new corn/rice mill is accessible to all the community for a low price. Income on the operation will be used for the salary of its personnel, maintenance of the equipment and the rest will be part of the association’s saving for future expansion and venturing to other income generating activities suitable in the community.

**Sita-Matigsalug Abaca Growers Association:** The association decided to restart their abaca fiber production since they already have existing knowledge on this activity. Through the support of PRC, the association was provided with abaca decortivating machine (to remove the bark, rind, or husk) to improve quality and processing of fiber, thus selling the product at a higher price. Around 1,500 abaca plants were initially planted in October 2018. The association is targeting to plant a total of 5,000 planting materials.

All monitoring activities for the CMLP projects will be through the Operational Plan 2019. As part of the exit strategy of the appeal, the chapter will continue with the monitoring activities. The associations were also linked with relevant government agencies for technical support, in case needed.

**Community training for livelihoods:** Part of the strategy of the HLA and CMLP activities was to link the communities to their respective LGUs for technical support. The linkage promotes the sustainability of the project through appropriate guidance and technical inputs, as well as an increased sense of ownership and responsibility for the enterprise. With partnership with the Municipal Agriculture Office, the selected 254 beneficiaries in Zamboanga del Norte were trained on different types of livelihoods activities such as pig and poultry raising. The same capacity development was provided to the association members for the CMLP. They were also trained for financial literacy, and leadership and management training. They were also trained on agroforestry for increased land use management system know-how.

**Seeds Assistance:** Aside from the cash grants vegetable seeds were also distributed. The kinds of seeds distributed was recommended by the communities and based on the seasonality and suitable for the area. A total of 750 households received seeds in Bukidnon and Zamboanga del Norte. The seeds are aimed to support food security while they await the sale of their pigs and other produce.

### Challenges

At first, it was not easy to establish an association as many of the association's officers did not have identification and documents needed to have the accreditation in DOLE and requirements to open a bank account. To fill this gap, PRC collaborated with the relevant government offices, such as Municipal Agriculture's Office, DOLE and DTI to support documentation and processing to establish the association. Further, members of the association were provided with technical trainings on financial literacy, and leadership and management training to ensure sustainability of the programmes.

### Lessons Learned

In January, a PDM monitoring for multipurpose cash was conducted for a total of 651 respondents. Highlights of the survey are as follow:

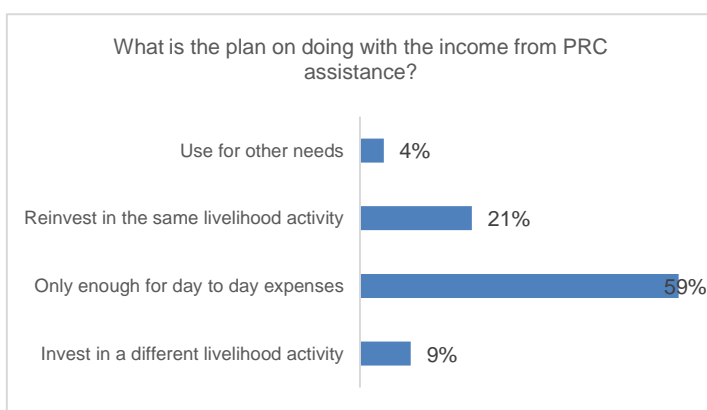
Response	Question
67 per cent	were informed on the amount they will receive
89 per cent	said that the community was okay with the cash transfer programme
94 per cent	were informed about the day, time and location of the cash distribution
99 per cent	found the date, time and location of distribution convenient
98 per cent	felt safe during the day of the distribution
98 per cent	felt safe going back home with the money and keeping it at home
99 per cent	said that the cash did not cause any tension in the household
81 per cent	said that the community was okay if women receive the cash
98 per cent	did not think the cash grant negatively affected the relationships in your household
85 per cent	said that the cash grant did not create tension in the community, particularly with non-beneficiaries

A PDM monitoring was conducted for HLA, highlights of the survey results are as follow:

Questions	Don't know	No	No response	Yes
Do you understand how you were selected to benefit from this programme?	-	1.9%	0.6%	97.5%
Do you think that all the people affected by the disaster were included?	-	2.5%	1.9%	95.6%
Do you feel that the beneficiaries deserved to be selected?	-	0.6%	1.3%	98.1%
Do you feel that people/households were excluded when they should have been included?	1.3%	55.0%	4.4%	39.4%
Did you think the selection/validation process was informative?	-	1.3%	-	98.8%
Did you think the selection/validation process was fair?	-	2.5%	-	97.5%
Do you know of any households that had difficulties accessing the program?	5.6%	84.4%	5.6%	4.4%
Was the proposal you submitted the same with the actual activity implemented?	-	-	-	100%
Is your livelihood activity from the PRC assistance still functional?	-	6.9%	-	93.1%
Was the assistance timely?	-	-	-	100%
Were you informed of the amount that you will be receiving?	-	0.6%	-	99.4%
<b>Technical assistance / training</b>				
Did you receive any technical support or training for your new livelihoods activities?	-	24.4%	1.3%	74.4%
Was it useful? (a follow up question to those who said that they received technical support)	-	-	4.4%	70%
<b>PGI</b>				
Do you think the women in your community were given an opportunity to participate in the HLA programme?	0.6%	-	-	99.4%
Is it accepted by your family or community for women to attend trainings which is focused on livelihoods?	0.6%	-	-	99.4%
Are women in your family included in the decision-making for how to spend the cash grant?	-	-	-	100%
Did you feel like you received proper orientation about the programme?	0.6%	1.3%	0.6%	97.5%

On selection there was a positive response to all questions except on the question "Do you feel that people/households were excluded when they should have been included?" where 39% said no. This relates to number of people who were considered outside the selection criteria. For example, people who were poor, but had not been negatively affected by the storm and hence did not qualify to be selected.

With regards training to support the livelihoods projects and coordination with other stakeholders it was reported that 60% of the respondents received training support from the government, 12% from non-government and 3% from others. The kinds of training received were agricultural training, basic business management and skills training. 93% of the respondents reported that their livelihoods are still functional. 59% said their income only met their daily needs, the rest could save and reinvest. With regards the remaining 7% there were a collection of responses including: sickness; other work; had to prioritise food; no access to water for agriculture, etc.



Cash continues to be acceptable as a way of providing assistance with 96% of the respondents saying it was a good methodology.



## Health

People reached: 11,739<sup>18</sup>

Male:

Female:

Indicators:	Target	Actual
# of targeted people reached have their immediate risks to health reduced	10,000	11,739
# of people reached by First Aid services	800	781
# of households reached with community-based epidemic prevention and control activities	2,000	1,571
# of people reached by psychosocial support	3,500	2,339 <sup>19</sup>
# of people supported by search and rescue	650	764

### Narrative description of achievements

After the Tembin made landfall, affected chapters deployed **water search and rescue (WASAR)** teams to support and assist stranded people. WASAR teams from the five chapters (see below) were all able to assist 764 individuals with rescue:

Agusan del Norte	Davao del Sur	Lanao del Norte	Misamis Oriental	Zamboanga del Norte	Zamboanga Sibugay
1	339	40	214	15	155

PRC chapter staff and volunteers rolled out standard PRC services, including setting up **welfare desks** at evacuation centres in Visayas (Cebu) and Mindanao (in the cities of Butuan, Cagayan de Oro, Davao, Iligan and Surigao). Welfare desk activities include: (i) restoring family links; (ii) tracing; (iii) psychosocial support; (iv) critical incident stress management; (v) guidance and counseling; (vi) inquiry and communications; (vii) contact of relatives; and (viii) referral. desks also served as the main stop for client-relations including registration of affected people in need of assistance, determining their immediate needs and referring them to the relevant PRC departments or other agencies for assistance. Through the welfare desks, PRC was able to provide medical services to 781 individuals – 750 people were checked for their blood pressure, referring some of them for medical treatment; and first aid to 31 people.

**Mosquito nets** were provided to the beneficiaries as part of the standard package of non-food items. Through the appeal, IFRC supported the mobilization of PRC staff and volunteers, logistics and transportation for all NFI's distributed. In total, PRC provided 4,027 households with 2 pieces of treated mosquito nets, in which 1,571 came from the IFRC disaster preparedness stocks that were later replenished. The remainder of mosquito nets came from PRC own stocks including those supported by Australian Government Department of Foreign Affairs. and the remainder from PRC's own stock.

<sup>18</sup> 7,855 people with mosquito nets, 781 with first aid, 2,339 with psychosocial support and 764 with search and rescue

<sup>19</sup> Figure reflected is based on the validated and recent 3W submitted by PRC DMS

### Breakdown of households provided with mosquito nets by PRC

Province	No. of municipalities	No. of barangays	Total no. of HHs reached	IFRC supported stocks
Bukidnon	2	5	510	10
Lanao del Norte	7	45	1,967	511
Lanao del Sur	2	16	550	550
Zamboanga del Norte	5	10	500	500
Zamboanga Sibugay	1	4	500	-
<b>Total</b>	<b>17</b>	<b>80</b>	<b>4,027</b>	<b>1,571</b>

Provision of **psychosocial support** (PSS) is standard practice for PRC during emergency operations, particularly as some people affected by the tropical storm displayed signs of trauma. PRC, through its Welfare Services department, provided PSS to 2,339 individuals in 20 affected barangays from the provinces of Davao del Norte, Lanao del Norte, Lanao del Sur, Misamis Oriental, Surigao del Norte and Zamboanga del Norte. Adults were provided with individual or group PSS, including psychological first aid, while children were supported to cope through recreational activities, including play and art.

Staff and volunteers mobilized for PSS activities were trained. In Zamboanga del Norte Chapter, 25 volunteers (16 female and 9 male) were trained for PSS and Restoring Family Links. In Lanao del Norte, a PSS crash course was conducted for four female volunteers. These activities are also part of the capacity building for chapters.

### Challenges

For relief one of the main challenges was the wide geographical spread of the response and in some cases the areas were very difficult to access.

### Lessons Learned

Refer to the results held in AOF 1 for **relief items** post distribution monitoring (PDM) survey for non-food items distribution.



### Water, sanitation and hygiene

People reached: 28,006

Male: 14,003

Female: 14,003

Indicators:	Target	Actual
# of people reached in targeted communities have reduced their immediate risks of waterborne and water related diseases	25,000	28,006
# of assessments and monitoring visits undertaken	3	3
# of people provided with safe water (according to WHO standards)	25,000	26,069
Litres safe water distributed (cumulative)	1,000,000	1,611,500
# of people reached by hygiene promotion activities (emergency)	10,000	28,006
# of households provided with a set of essential hygiene items	2,000	1,783 <sup>20</sup>
# of people reached have sustainable reduction in risk of waterborne and water related diseases	1,500	1,745
# of assessments and monitoring visits undertaken	3	4
# households provided with safe water services that meet agreed standards according to specific operational and programmatic context	354	150 <sup>21</sup>
# of households with access to an improved sanitation facility	100	349
# of people reached by hygiene promotion activities (recovery)	500	12,195

### Narrative description of achievements

**Emergency WASH:** Three teams from PRC National Headquarters were immediately deployed to Lanao del Norte, Palawan and Zamboanga del Norte to conduct Rapid Disaster Assessment and Need Analysis (RDANA). All three teams had a WASH personnel to assess needs related to WASH. They identified that water sources were

<sup>20</sup> Reduction in target due to other stock made available to supplement stock purchased under the operations.

<sup>21</sup> The reduction was based on assessment and technical validation that identified four locations and 150 households in need of water system rehabilitation/construction.

contaminated which limited access to safe water in the affected communities and increased risks of waterborne diseases.

Based on the assessment PRC identified and installed water points in 18 communities with damaged water systems. WASH teams from Iligan and Zamboanga City chapters, together with water tankers, were also deployed to support emergency water, sanitation and hygiene needs in Zamboanga del Norte. In total, PRC distributed 1.6 million litres of water to 26,069 people.

#### Breakdown of people provided with safe water and jerry cans by PRC

Province	No. of municipality	No. of barangay	Litres of water distributed	Beneficiaries reached with water	Total no. of HHs reached	IFRC supported stocks
Bukidnon	2	4	-	-	732	232
Lanao del Norte	7	43	62,000	586	1,967	511
Lanao del Sur	2	15	55,000	671	550	550
Misamis Oriental	1	1	403,000	15,533	116	-
Zamboanga del Norte	5	10	1,091,500	9,279	500	500
Zamboanga Sibugay	1	4	-	-	500	-
<b>Total</b>	<b>18</b>	<b>77</b>	<b>1,611,500</b>	<b>26,069</b>	<b>4,365</b>	<b>1,793</b>

Emergency hygiene promotion activities to increase public awareness and prevent diseases related to poor hygiene practices were implemented by PRC. PRC mobilized community health volunteers to support hygiene promotion activities. Key topics included good and bad hygiene practices and handwashing. In total, PRC WASH Services reached 28,006 individuals with hygiene promotion activities.

Through the appeal, IFRC supported the mobilization of PRC staff and volunteers, logistics and transportation for all NFI's were distributed. Out of all the NFI's distributed 1,560 families received jerry cans<sup>22</sup> and 1,783 families received hygiene kits came from IFRC Disaster Preparedness stocks which were later replenished. The remainder of NFI's came from PRC own stocks including those supported by Australian Government Department of Foreign Affairs. A standard IFRC hygiene kit contains 12 pieces of body soap, 5 pieces laundry soap, 40 pieces sanitary pads, 5 pieces bath towels, 6 pieces toilet paper, 2 pieces toothpaste, 5 pieces toothbrush and 4 pieces of disposable razor. Alongside distribution was a short orientation on the content and use of the kit.

#### Breakdown of households provided with hygiene kits by PRC<sup>23</sup>

Province	No. of municipality	No. of barangay	Total no. of HHs reached	IFRC supported stocks
Bukidnon	2	5	732	232
Lanao del Norte	6	35	1,957	501
Lanao del Sur	2	15	550	550
Palawan	1	1	500	-
Zamboanga del Norte	4	9	500	500
Zamboanga Sibugay	1	4	500	-
<b>Total</b>	<b>15</b>	<b>69</b>	<b>4,739</b>	<b>1,783</b>

#### Recovery WASH

WASH recovery had the following activities:

- WASH as part of the shelter program in Bukidnon
- Community water projects in Bukidnon
- Hygiene promotion in Zamboanga Del Norte

**WASH as part of the shelter program, Bukidnon:** A detailed assessment on the appropriate WASH intervention was conducted by the WASH technical team in Bukidnon, for the shelter relocation beneficiaries. Based on the assessment, relocated families needed access to sanitation facilities and water supply.

With active participation of the elders, beneficiaries and BaReCom with the technical support of the project engineers they identified the design of the individual household latrines as the preferred options for sanitation. However, the normal PRC design for latrine septic tanks is based on a concrete block design and due to the difficult access to the area this was considered not practical. As such a different design using plastic tanks was identified. The final design of the septic tank was culturally acceptable and complied with the government minimum standard to prevent the contamination of the ground water. The design was also shared to the local government for their reference.

<sup>22</sup> Two jerry cans per households

<sup>23</sup> Validation for the total number of hygiene kits distributed is on-going. Final figure will be reflected in the next reporting.

As a counterpart from the community it was agreed that excavation for the septic tanks and securing of rocks for the leaching chambers should be carried out by the beneficiary while labor for the installation of tanks, pipework and bowl would be covered by the program, based on the agreed requirement.

Out of the 370 shelters beneficiaries, 349 were provided with latrine. The other beneficiaries opted to construct their own latrines based on personal preferences and purchases already made prior to PRC's latrine programme.

Participatory Hygiene and Sanitation Transformation (PHAST) was implemented in the four covered barangays. Aside from educating people on personal hygiene, knowledge about prevention of water-borne related diseases was also highlighted considering the history of diarrhea in these areas. This was to promote good hygiene behaviors, sanitation improvements and sustainable management of WASH facilities by the communities.



Based on the feedback of beneficiary, latrines were built as an integral component of shelters. (Photo: Reygielyn Bareng/ IFRC)

**Community water projects, Bukidnon:** One of the major problems in the target communities was their source of safe water for drinking especially during dry season. Normally, people fetch water from the Salug river (not recommended for drinking) for washing clothes and bathing while their drinking water is from springs. However, the springs are not always available during summer months. As such, they are forced to drink water from the river.

Based on consultation with elders, beneficiaries and BaReCom with the technical support of the project engineers it was identified how to provide access to clean water especially during the dry season by improving access to natural springs. As part of the consultation the community mapped out their current water resources and drafted plans for the proposed new water systems with the support of the project engineers. The community conducted a detailed assessment on their area and after consultation between the beneficiaries, BaReCom and elders they decided on the locations for the spring boxes, tap stands and reservoir so they were accessible to all. Based on assessment and technical validation four locations and 150 households were identified in need of water system rehabilitation/construction. The construction of the entire water system was led by community members.

Prior to the construction of the water system, water testing was carried out to check the suitability of the water sources for drinking water.

The communities proposed the construction of a water reservoir and improvement of water sources from springs in the Barangays of Digongan and Kiulom and the provision of wells and hand pumps where water from the spring was not accessible. The community, supported by the BaReCom, was in-charge of the preparation of the site where pipes and the reservoir were constructed. In addition, the hauling of construction materials was a joint effort of the community.

Details of the water systems constructed and the number of households who have access to safe water are as follows:

**Breakdown of communities identified for rehabilitation of water sources**

Location	Type of intervention	No. of households benefited from water system	No. of households reached through PHAST
Digongan	Improvement of existing spring water source	32	505
Sitio Kilantap in Kiulom	Improvement of existing spring water source	64	454
Sitio Hanigon in Kiulom	Construction of spring box	26	
Panganan			935
Sinuda	Construction of hand pump	28	545
Total		150	2,439

**Participatory Hygiene and Sanitation Transformation (PHAST) in Bukidnon:**

Community-based WASH was implemented using the PHAST approach. Members of the community were trained on the 7 steps of PHAST from problem identification, problem analysis, planning for solutions, selecting options on how to address the problem, planning for new facilities and behavior change, planning how to check the progress through monitoring and evaluation, then checking the progress through evaluation. The approach aims to instigate behaviour change at the grassroots level. This was to promote good hygiene behaviours, sanitation improvements and sustainable management of WASH facilities by the communities. The approach has contributed to empowering

communities to manage their water and to control sanitation-related diseases by promoting health awareness and understanding, leading to environmental and behavioural improvements.

**Hygiene promotion in Zamboanga Del Norte:** During revalidation activity in Zamboanga del Norte, the WASH team recommended to proceed with hygiene promotion activities. This activity trained 32 RC143 volunteers. These volunteers were mobilized for the hygiene promotion activity with key messages on personal hygiene, water-borne diseases, safe drinking water and proper food handling, and vector-related diseases were the main topic during the hygiene promotion. IEC materials on hygiene promotion were printed and posted in communities where community volunteers conducted the activities. The intervention raised awareness with communities on the importance of hygiene promotion and reached 580 individuals (116 households).

### Challenges

One of the main challenges was the wide geographical spread of the response and in some cases the areas were very difficult to access. This was particularly the case for recovery WASH hardware and getting the construction materials to the communities. As such where possible standard designs were amended to reduce the need to move heavy construction materials.

In Dingongan, the identified location for the construction of water system was privately-owned. Since the owner was not always around, dialogue to ask the permission of the owner took longer. This has caused a little delay on the construction. Following negotiation with the owner, the beneficiaries through the chieftain and BaReCom, was able to secure a certificate, that they were allowed to do the construction.

### Lessons Learned

Refer to the results held in AOF 1 for relief items post distribution monitoring (PDM) survey for non-food items distribution.



## Protection, Gender and Inclusion

**People reached: 28,006**

Male: 14,003

Female: 14,003

Indicators:	Target	Actual
# of people reached for inclusion and protection outcome	25,000	28,006
# of staff/volunteers available to provide equitable access to services	20	313
# of children with access to equitable services preventing sexual and gender-based violence	5,000	5,392

### Narrative description of achievements

All staff and volunteers mobilized for this operation were capacitated based on the type of activities in which they were involved. Trainings were provided to 313 staff and volunteers, see [breakdown of trained volunteers](#) table for details.

IFRC has zero tolerance for any form of violence against children. Child protection policy is part in the mandatory orientation provided to volunteers mobilized in this operation where all staff and volunteers signed a document that they have read, understood and would abide the policy. Careful programming across all the sectors and operational areas of IFRC ensured that children was protected from exploitation and abuse regardless of their nationality, culture, ethnicity, gender, religious or political beliefs, socio-economic status, family or criminal background, physical or mental health or any other factor of discrimination.

For recovery operations, the 8 communities from Bukidnon and Zamboanga del Norte has a total population of 15,583. Approximately, there are 5,392<sup>24</sup> children (age from 0-14 years old) from these operational areas. IFRC and PRC staff and volunteers ensure that child protection was integrated all throughout its activities and programs for the recovery operations. During the relief phase, PRC Welfare Service had considered child protection, as well as gender-based violence, through the establishment of welfare desks in different evacuation centres.

There were several PGI considerations for the recovery program:

<sup>24</sup> Based on Philippine Statistics Authority age structure breakdown, 0-14 years old constitute 34.6% of the total population in the Philippines.

1) The recovery operational areas in barangays of Kitaotao, Bukidnon are classified as geographically isolated disadvantaged area (GIDA). This refers to communities with vulnerable population physically and socio-economically separated from the mainstream. Physical factors which contributes to its vulnerabilities includes isolation due to distance, weather conditions and transportation difficulties considering that to reach these areas you have to cross rivers and mountains and no access by vehicles. For socio-economic factors, vulnerabilities are attributes to high poverty incidence and the communities are in areas with security risks.

2) This programme worked with Indigenous People (IP), the Matig-Salug tribe. The operation took into consideration the community's cultural norm. According to the community, no activities should start without holding the ceremonial rituals. A ritual was carried out by the tribe chieftain. As a sign of respect, PRC abided with their cultural practice which was also attended by the local government and community members.



Before the start of the programme implementation, members of the Matig-Salug (Matigsalug is a term, which means "people along the Salug River - now called the Davao River) tribe did a ceremonial ritual called "panubad" by offering the spirits with white chicken. This ritual was performed for protection. The ritual ceremony was attended by PRC, local government and community members. A famous Matigsalug ritual called panubad is performed for protection and to appease the spirit living in the water. (Photo: PRC/IFRC)

Considerations for the elderly and people with disabilities (PWDs) vulnerable groups:

- During beneficiary registration, elderly and PWDs had difficulties on traveling by foot, considering the distance of their houses to the barangay halls, where registration was usually held. As such, PRC did house-to-house visits for the registration of these vulnerable groups.
- For livelihoods assistance, the elderly and PWD were given extra assistance in guiding them with their livelihoods' proposals to ensure that the proposed activity was within their capacity.
- During the livelihoods cash and seeds distribution, elderly and PWD were given priority to collect their cash grants and claim their seeds. They were assisted by PRC volunteers from registration all the way to collection of cash.
- During the planning phase of the shelter construction, the BaReCom and beneficiaries were consulted on how the elderly and PWDs beneficiaries would be supported since they can no longer perform construction work, the community decided to ensure that houses of elderly should be constructed first and would be supported by all other beneficiaries. One of the tasks of elderly was to monitor the construction of their houses to ensure that build back safer shelter techniques is being implemented since they also attended the orientation.



The recovery operation in Bukidnon worked with people who are members of the indigenous group called Matig-salug tribe. All throughout the operation, custom and cultural norm of the tribe members were considered and respected in this operation. (Photo: Maryjoy Evalarosa/IFRC)

### WASH program:

- There was an integration between shelter and WASH programmes. There was significant dialogue with the community about the types of latrine. Originally, the plan was to construct communal latrines. However, during consultation, the communities expressed concern on the access of elderly and PWDs. They also considered the safety of children who would be using the latrines at night. Communal latrine were not culturally normal for the members of the Matig-Salug tribe. Based on these feedbacks, PRC designed individual household latrines.
- The existing water source in municipality of Kitaotao would require people to walk around 1 kilometre from their respective shelters. This has been causing inconvenience for children, elderly and PWD. During consultation, the community took into consideration the location of water points when deciding where to locate their new shelters to reduce the distances walked. PRC proceeded with the construction of a water system to support easier access to the safe water points.

### Shelter program:

- The beneficiaries and chieftains were consulted from assessment to planning for the shelter programme where PRC ensured that their thoughts and opinions were heard and applied, e.g. type of walls, flooring, etc. They were also involved during monitoring and even supported the construction works.

### Challenges

One of the main challenges was the wide geographical spread of the response and in some cases the areas were very difficult to access.

### Lessons Learned

Part of the PDM survey conducted was to assess women participation in the shelter program. Highlight of the results are as follows:

Question	Don't Know	No	No response	Yes
Do you think the women in your community were given an opportunity to participate in the SA programme?	-	12%	-	88%
Is it accepted by your family or community for women to attend trainings which is shelter focused?	1%	8%	-	91%
Are women in your family included in the decision-making for how to spend the cash grant?	-	3%	-	97%



### Disaster Risk Reduction

People reached: 15,583

Male: 7,792

Female: 7,791

Indicators:	Target	Actual
# of people reached in targeted communities are prepared for and able to respond to disaster	15,583	15,583
# of people reached with public awareness and education campaigns using harmonized messages to reduce, mitigate and respond to identified risks	15,583	15,583
# of people reached in targeted communities adopt climate risk informed and environmentally responsible values and practices	500	1,850
# of people benefit from tree planting	500	1,850

### Narrative description of achievements

All eight targeted communities were supported with community-based disaster risk reduction projects to help build their resilience against future disasters. As part of the disaster preparedness project community volunteers received orientation and training in Standard DRRM and First Aid.

Province	Barangay	No. of volunteers oriented about RC143	No. of RC 143 volunteers trained in first aid	No. of RC143 volunteers trained in SDRRMT
Bukidnon	Digongan	44	44	9
	Kiulom	44	44	10
	Panganan	44	44	8
	Sinuda	44	44	9
Zamboanga del Norte	Canupong	44	44	44
	Mamawan	44	44	44
	Panganuran	44	44	44
	Sibalic	44	44	44
<b>Total</b>		<b>352</b>	<b>352</b>	<b>212</b>

Community-based disaster risk reduction programme also complemented and supported the local governments Barangay Disaster Risk Reduction Management Plans.

Two barangays were identified for vulnerability and capacity assessment (VCA) activity: Zamboanga del Norte, Barangay Canupong and Barangay Kiulom in Bukidnon. Geographically, these two barangays are the farthest and mostly inaccessible for aid and information. The VCA in Zamboanga del Norte was completed and the output presented to the barangay council. This will then move to the development of plan of action based on the vulnerabilities

and capacities identified in the community. Implementation and monitoring of the community-based disaster preparedness (CBDP) will be carried under the Operational Plan 2019 of IFRC CO.

At the completion of this programme, CBDP activities helped in the improvement of community resiliency through improved disaster response and mitigation of disaster risks for 15,583 people – the total population of the 8 barangays in Zamboanga and Bukidnon.

Climate change mitigation activities is an integral component for the PRC DRR implementation. Tree planting was carried out in Bukidnon with the support of local government units. The Department of Agriculture donated bamboo shoots that were planted in riverbanks. This will help prevent landslides, land degradation and erosion. Beneficiaries from all the shelter operation areas lead the tree planting in their respective areas.



Beneficiaries in Panganan lead the planting of bamboo in their area. (Photo: Reygielyn Bareng/IFRC)

### Challenges

One of the main challenges was the wide geographical spread of the response and in some cases the areas were very difficult to access.

### Lessons Learned

Future operations will try and start the DRR activities at the start of the recovery phase. Future projects will make more use of the Barangay Disaster Risk Reduction Management Plans in designing a community-based disaster preparedness project.

## Strengthen National Society

Indicators:	Target	Actual
# of PRC chapters that are well functioning for the emergency operation	4	4
# of volunteers insured	17	17
# of volunteers trained	313	313
# of volunteers provided with psychosocial support	17	17
# of volunteers involved in decision making processes	17	17
# of deployment of RCAT	1	1
# of training provided to staff and volunteers	3	3
PRC disaster preparedness strategy developed	Yes	Ongoing

### Narrative description of achievements

Prior to mobilization, all volunteers were provided orientation on the history and seven fundamental principles of the Red Cross Red Crescent Movement. From the start of the operation, from relief to recovery, a total 244 volunteers were trained. Red Cross Action Team 143 volunteers were deployed and mobilized for this operation during the emergency phase. Below is a breakdown of volunteers in the operation:

#### Breakdown of trained volunteers

Training	No. of staff/ volunteers trained	Female	Male
PSS and Restoring Family Links	29	20	9
Hygiene promotion	197 <sup>25</sup>	-	-
PASSA	16	-	-
First aid	55	-	-
Shelter	9	3	6
Livelihoods	7	1	6
<b>Total</b>	<b>313</b>		

For recovery operation, a total of 16 volunteers were mobilized, 7 in Bukidnon chapter and 9 in Zamboanga del Norte chapter. All their feedbacks and inputs based on the progress of the project implementation were factored in the

<sup>25</sup> 165 trained community volunteers during the emergency phase and 32 community volunteers during recovery phase

programme design and strategy. All volunteers mobilized for the recovery operation are insured under the Membership and Accident Assistance Benefit (MAAB) of PRC.

Bukidnon and Zamboanga del Norte chapters were provided with necessary office supplies and infrastructure development for a conducive working environment. This included IT equipment. Aside from basic equipping, volunteers mobilized in this operation were also trained and oriented prior to deployment. Bukidnon chapter was also support with infrastructure development, this included the construction of a new boundary wall to improve the security of the chapter. Also, minor renovations were supported in Zamboanga del Norte Liloy Branch.

At the conclusion of the recovery operation, a teambuilding activity with component of psychosocial support was organized for 16 volunteers. This also paved way to give recognition to the valuable contribution of the volunteers in project implementation.

A small balance of NFI's will be added to the PRC Disaster Preparedness stocks supported by IFRC for future disaster responses.

## International Disaster Response

Indicators:	Target	Actual
% of targeted population satisfied that they have access to information, feedback mechanisms and can influence the tropical storm operation	80% (of most vulnerable affected)	85%
# of CEA RDRT deployed	1	1
% compliance with Principles and Rules for Humanitarian Assistance	100%	100%
% of international procurement respecting the IFRC procurement procedures	100%	100%
# of coordination meetings with other stakeholders	3	3
MCA in place	100%	100%
Involvement in regular coordination meetings	Yes	Yes

### Narrative description of achievements

From assessment stage, the affected community were consulted on their needs and this information was factored into the planning process. Staff and volunteers conducted community meetings to explain the projects and selection criteria. IEC materials about the program were posted in strategic locations in the operational areas. These were translated in local dialect to ensure understanding and clarity. This was to let beneficiaries and the wider communities understand the rationale behind the selection criteria, considering that only a fraction of the affected population could be supported with recovery assistance.



PRC holds a community validation when identifying beneficiaries. This approach pave way for community participation for programme implementation. (Photo: PRC)

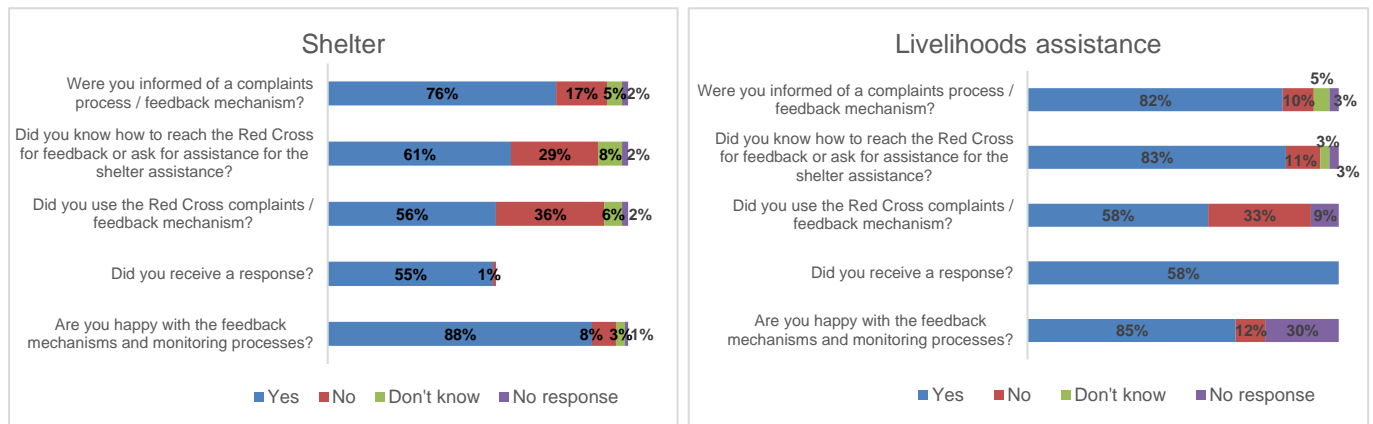
A **community engagement and accountability (CEA) specialist RDRT** was deployed in Tembin operation. The RDRT supported the chapter to establish a process of rolling out and documenting CEA activities.

In each community a **Barangay Recovery Committee (BaReCom)** was set up. The BaReCom, which comprised of five to ten community members in each barangay, contributed directly to the local recovery planning, beneficiary selection process, and prioritization of activities as well as implementation and monitoring of the interventions. They provided valuable insight into individual community recovery needs for each sector and assisted in identifying beneficiaries who can then be validated through collective community processes. These committees acted as advisory groups for all programmes under PRC/IFRC recovery interventions such as shelter, livelihoods, water and sanitation, and disaster risk reduction. The BaReComs did on-site monitoring and received direct feedback which were essential for the program implementation and resolving challenges at their level. If not resolved at their level, they relayed it to PRC staff and volunteers for action. As such, the BaReComs helped to ensure an integrated approach of multiple programme sectors. They were an important platform to promote community participation and accountability.

In the completed PDM for the NFI's and cash assistance, out of the 674 respondents, 42 per cent said that they have access to the local PRC chapter while 46 per cent mentioned that they have other means of reaching PRC. Only 28

per cent used the feedback mechanism of PRC wherein 75 per cent of them received a response. Overall, 98 per cent of the total respondents were happy in the process of selection, distribution and feedback mechanism.

For recovery interventions, a PDM survey was conducted for shelter and livelihoods assistance which had a CEA component. This included a satisfaction question where the community could gauge their access to information and feedback mechanism.



**IFRC Logistics** team was supporting PRC Logistics in procuring, storing and transporting emergency relief items and supported personnel movement. NFI's from IFRC disaster preparedness stock for 2,000 households were mobilized to three provinces: 800 in Lanao del Norte, 700 in Lanao del Sur and 500 in Zamboanga del Norte. All in-country transportation and distribution were carried out in close coordination with PRC Logistics Department and Disaster Management Services Department. Two 10-wheeler trucks were hired to support transportation of NFI items. All replenishment of stocks are completed. Blankets and sleeping mats were procured locally, while the replenishment for hygiene kits, jerry cans, mosquito nets, tarpaulins and 200 shelter tool kits were procured internationally through the IFRC Operational Logistics, Procurement and Supply Chain Management (OLPSCM) Department in Kuala Lumpur.

For the recovery operations, logistics provided support for shelter, wash and livelihood in the operational areas of Bukidnon and Zamboanga del Norte. For recovery support, 3,824 pieces of CGI sheets, donated by American Red Cross, were sent to Bukidnon for the shelter assistance. For livelihood programme, 750 sets of vegetable seeds were procured and delivered to the field. Two IFRC vehicles were deployed to support the programs for materials and personnel movements. Under chapter capacity development program, logistics support was provided to the construction of PRC Bukidnon Chapter perimeter fence and minor renovations in PRC Zamboanga del Norte Liloy Branch.

PRC participated in NDRRMC meetings and coordinated with relevant government offices. At country level, PRC and IFRC consistently participated in meetings of the HCT. More details about coordination meetings with other stakeholders are detailed in [Overview of non-RCRC actors in country](#) section.

Furthermore, PRC organizes a monthly in-country Movement-wide meeting to update partners on current plans and activities. Partners also shared relevant information related to in-country plans and activities. In case of large-scale disasters, IFRC, ICRC and the NS will follow the Movement Coordination Agreement in place and will further seek ways to improving coordination mechanism.

**Challenges**

One of the main challenges was the wide geographical spread of the response and in some cases the areas were very difficult to access.

**Lessons Learned**

Based on the results of PDM survey, PRC is improving in terms of setting up a structured mechanism compared in previous operations. Its important beneficiaries and the wider community are aware of any feedback mechanism, so they can all voice out necessary information that could affect the operation and the people that the PRC is reaching.

Good coordination and collaboration with local government unit was evident in this programme. During the shelter assistance planning, communities and the government were involved and consulted. Based on the consultation, it was agreed that community members and local government units would have their respective counterparts. For example gravel and sand, which were available in the community, were the counterpart of beneficiaries. Beneficiaries were also responsible to secure labour support to assist the carpenter. The local government provided hauling support during the delivery of CGI sheets.

## Influence others as leading strategic partner

Indicators:	Target	Actual
IFRC and NS are visible, trusted and effective advocates on humanitarian issues.	100%	100%
# of communications materials produced (social media, media articles, interviews, etc.)	6	18
# of rapid and detailed assessment teams deployed – chapter level and augmented by NHQ.	6	6
Work in planning and reporting to ensure effective accountability internally and externally.	100%	100%
# of post-distribution visits to affected communities	5	5
IFRC leadership in resource development for emergencies is maintained.	100%	100%
% of appeal supported	80%	93%

### Narrative description of achievements

The communications team ensured that the needs to the communities and Red Cross activities were effectively communicated to the public from the onset of the emergency. The team generated high quality photos, video clips, and news stories which were used across IFRC and PRC multimedia platforms. These materials were also widely circulated/utilized by PRC, PNS, and IFRC, and sent to national and international media. Both PRC and IFRC communications teams were active in posting information regarding the operation on several social media.

PRC published news articles on their public website and on their official social media accounts:

- PRC Facebook Live of ceremonial turnover ceremony for Tembin/Vinta affected families (click [here](#), [here](#), [here](#))
- PRC appeals for aid for 500,000 people affected by Vinta (click [here](#))
- Red Cross launches emergency appeal for #VintaPH (click [here](#))
- PRC gives cash grants to Vinta-displaced families in Mindanao (click [here](#))
- PRC receives 3.3 million Philippine peso assistance from Turkish Red Crescent for Vinta Relief Operation (click [here](#))

The IFRC Communications team also produced several communications materials:

- AV materials on Tembin (click [here](#))
- Six months on recovery milestones, highlights on Twitter (click [here](#), [here](#), [here](#), [here](#), [here](#), [here](#))
- Community voices news article (click [here](#))
- A news article which is up to the IFRC public website (click [here](#))
- Two press releases: 1 for [DREF](#) which was released on 23 December 2017 and 1 for the [emergency appeal](#) which was released on 26 December 2017.

*Six teams from the National Headquarters were deployed to Lanao del Norte, Palawan and Zamboanga del Norte. The first three teams were deployed for rapid assessment then two weeks later, three teams were deployed for detailed assessment in the same areas and then Bukidnon. Since the start of the recovery operation, staff and volunteers conduct constant monitoring of the communities needs and response activities.*

In January 2018, two post-distribution visits were conducted for the PDM survey on unconditional/multipurpose cash grant and non-food items. For the recovery operation, another PDM survey was conducted for the shelter and livelihoods assistance. In 30 March 2019, a lessons' learnt workshop was organized in Bukidnon following a two-week program evaluation.

The revised appeal of 1,274,468 was 93 per cent covered at CHF 1,194,765.

### Challenges

Funding was a challenge and the appeal had to be revised to reflect the low support to the original Emergency Appeal. The uncertainty of funding puts an added complexity to planning.

### Lessons Learned

Based on the analysis of the evaluation team, the following overall recommendations were made:

#### Project Planning

- Always carry out a thorough assessment before the finalization of project design.
- Always conduct a chapter orientation regarding the full overview of the project.
  - Include the disclosure of salaries.
  - Clarify the roles of each personnel.
  - Clarify the roles or tasks of volunteers and BaReCom.
  - Clarify reporting lines

- Involve the chapter from planning and development of plan of action. They should be consulted in the decision making from the start to end of the operation.
- Exit / sustainability plan should be considered from the planning phase of the program. this can be revised / updated as necessary during implementation.

#### Sustainability

- Exit/sustainability plan should be discussed at the start. Then reviewed/revised accordingly.

#### Transparency and Accountability

- Hold regular coordination and collaboration with stakeholders.

#### Intensify disaster risk reduction activities especially in areas which are frequently affected by hazards.

- PRC assistance should complement with LGU assistance. For example, LGU will provide Emergency Shelter Assistance and PRC can complement this with PASSA.

### Effective, credible and accountable IFRC

Indicators:	Target	Actual
Effective performance of staff supported by HR procedures	100%	100%
% of compliance with PRC HR procedures	100%	100%
% of financial reporting respecting the IFRC procedures	100%	100%
# of security updates provided to PRC and stakeholders	Weekly	Weekly

#### Narrative description of achievements

The operation recruited a field officer, DRR officer, livelihood officer, WASH officer and two drivers. Recruitment process was based on PRC HR procedures. Mobilization and provision of allowance to volunteers was also based on standard PRC HR procedure.

The IFRC, through the finance department, provided the necessary operational support for review, validation of budgets, bank transfers, and technical assistance to the National Societies on procedures for justification of expenditures, including the review and validation of invoices. PRC – which was on the working advance system – has been supported for many years by the IFRC and is accustomed to these financial procedures. All financial transactions in this operation adhere to the standard IFRC financial procedures. The IFRC finance and administration team in Manila provided both administration and transport support at headquarters and in the field.

Parts of Mindanao are security-sensitive due to the presence of non-state armed groups. Given the context, regular coordination was maintained with the ICRC and other Movement partners, as per the existing security framework and Movement coordination agreement. Regular information-sharing was maintained, and specific security protocols followed. All staff and volunteers were required to complete the IFRC Stay Safe e-learning courses: Stay Safe Personal Security, Stay Safe Security Management and Stay Safe Volunteer Security.

The team also had a strong coordination with the local government at the barangay level. They provided timely information and advice for field movement when going to the operational areas.

Weekly updates were provided from the field team to NHQ.



PRC and IFRC staff and volunteers travel for several hours on foot to reach the operational areas and do monitoring. (Photo: PRC)

#### Challenges

The team worked in GIDA. They need to travel several hours on foot, cross rivers and mountains to do regular monitoring. Due to the fatigue and risks of travelling every day, PRC staff and volunteers opted to stay for a week in the areas. The cohesion built by constant visit of the team created a safer environment among staff and volunteers, where community people welcomed the team as member of their community.

## **D. THE BUDGET**

The total budget for this operation was CHF 1,194,765 of which CHF 1,153,834 (97%) was spent. The balance of CHF 40,863 will be carried over to the Operational Plan 2019. This is to continue the chapter development support and some activities for disaster preparedness.

The financial report is attached at the [end of this report](#).

## Reference documents



Click here for:

- [Information bulletin](#)
- [DREF](#)
- [Operations Update No.1](#)
- [Operations Update No.2](#)

**For further information, specifically related to this operation please contact:**

### In Philippine Red Cross

- Elizabeth Zavalla, Secretary General; phone: +63 2 790 2300; email: [secgen@redcross.org.ph](mailto:secgen@redcross.org.ph)
- Leonardo Ebajo, director for disaster management services; email: [leonardo.ebajo@redcross.org.ph](mailto:leonardo.ebajo@redcross.org.ph)

### In IFRC Philippine Country Office

- Chris Staines, Head of Country Office; phone: +63 998 585 0794; email: [chris.staines@ifrc.org](mailto:chris.staines@ifrc.org)
- Patrick Elliott, Operations Manager; phone: +63 998 961 2140; email: [patrick.elliott@ifrc.org](mailto:patrick.elliott@ifrc.org)

### In Asia Pacific Regional Office, Kuala Lumpur

- Mohammedomer Mukhier, deputy regional director; email: [mohammedomer.mukhier@ifrc.org](mailto:mohammedomer.mukhier@ifrc.org)
- Necephor Mghendi, Head of Disaster and Crisis Unit (DCPRR); email: [necephor.mghendi@ifrc.org](mailto:necephor.mghendi@ifrc.org)
- Johanna Arvo, Operations Coordinator; phone: +60 19 323 2647; email: [johanna.arvo@ifrc.org](mailto:johanna.arvo@ifrc.org)
- Riku Assamaki, Logistics Coordinator, Regional Logistics Unit; email: [riku.assamaki@ifrc.org](mailto:riku.assamaki@ifrc.org)
- Rosemarie North, Communications Manager; phone: +60 12 230 8451; email: [rosemarie.north@ifrc.org](mailto:rosemarie.north@ifrc.org)

### In IFRC Geneva

- Tiffany Loh, Senior Officer, Response and Recovery; email: [tiffany.loh@ifrc.org](mailto:tiffany.loh@ifrc.org)
- Cristina Estrada, Response and Recovery Lead; phone: +412 2730 4260; email: [cristina.estrada@ifrc.org](mailto:cristina.estrada@ifrc.org)

### For IFRC Resource Mobilization and Pledges support:

- **In IFRC Asia Pacific Regional Office:** Pui Wah Alice Ho, Partnership in Emergencies Coordinator; email: [alice.ho@ifrc.org](mailto:alice.ho@ifrc.org)

### For Performance and Accountability support (planning, monitoring, evaluation and reporting enquiries):

- **In IFRC Asia Pacific Regional Office:** Fadzli Saari, acting PMER Manager; email: [fadzli.saari@ifrc.org](mailto:fadzli.saari@ifrc.org)

## How we work

All IFRC assistance seeks to adhere to the [Code of Conduct](#) for the International Red Cross and Red Crescent Movement and Non-Governmental Organizations (NGOs) in Disaster Relief and the [Humanitarian Charter and Minimum Standards in Humanitarian Response \(Sphere\)](#) in delivering assistance to the most vulnerable. The IFRC's vision is to inspire, **encourage, facilitate and promote at all times all forms of humanitarian activities** by National Societies, with a view to **preventing and alleviating human suffering**, and thereby contributing to the maintenance and promotion of human dignity and peace in the world.

The IFRC's work is guided by Strategy 2020 which puts forward three strategic aims:



**Save lives,**  
protect livelihoods,  
and strengthen recovery  
from disaster and crises.



Enable **healthy**  
and **safe** living.



Promote social inclusion  
and a culture of  
**non-violence** and **peace**.

# Emergency Appeal

Final FINANCIAL REPORT

Selected Parameters			
Reporting Timeframe	2017/12-2019/5	Operation	MDRPH026
Budget Timeframe	2017-2019	Budget	APPROVED

Prepared on 28 Jun 2019

All figures are in Swiss Francs (CHF)

## MDRPH026 - Philippines - Tropical Storm Tembin

Operating Timeframe: 21 Dec 2017 to 31 Mar 2019; appeal launch date: 25 Dec 2017

### I. Emergency Appeal Funding Requirements

Thematic Area Code	Requirements CHF
AOF1 - Disaster risk reduction	34,985
AOF2 - Shelter	672,413
AOF3 - Livelihoods and basic needs	275,685
AOF4 - Health	26,115
AOF5 - Water, sanitation and hygiene	129,950
AOF6 - Protection, Gender & Inclusion	6,230
AOF7 - Migration	0
SFI1 - Strengthen National Societies	85,202
SFI2 - Effective international disaster management	26,259
SFI3 - Influence others as leading strategic partners	5,325
SFI4 - Ensure a strong IFRC	12,304
<b>Total Funding Requirements</b>	<b>1,274,468</b>
<b>Donor Response* as per 28 Jun 2019</b>	<b>1,194,765</b>
<b>Appeal Coverage</b>	<b>93.75%</b>

### II. IFRC Operating Budget Implementation

Thematic Area Code	Budget	Expenditure	Variance
AOF1 - Disaster risk reduction	12,131	7,183	4,948
AOF2 - Shelter	607,768	617,542	-9,774
AOF3 - Livelihoods and basic needs	317,769	228,942	88,827
AOF4 - Health	3,804	3,945	-141
AOF5 - Water, sanitation and hygiene	94,801	150,865	-56,064
AOF6 - Protection, Gender & Inclusion	0	0	0
AOF7 - Migration	41,729	41,729	0
SFI1 - Strengthen National Societies	71,030	55,928	15,102
SFI2 - Effective international disaster management	48,465	50,486	-2,021
SFI3 - Influence others as leading strategic partners	0	0	0
SFI4 - Ensure a strong IFRC	-2,802	-2,787	-15
<b>Grand Total</b>	<b>1,194,697</b>	<b>1,153,834</b>	<b>40,863</b>

### III. Operating Movement & Closing Balance per 2019/05

Opening Balance	0
Income (includes outstanding DREF Loan per IV.)	1,194,765
Expenditure	-1,153,834
<b>Closing Balance</b>	<b>40,931</b>
Deferred Income	0
Funds Available	40,931

### IV. DREF Loan

* not included in Donor Response	Loan :	626,996	Reimbursed :	626,996	<b>Outstanding :</b>	<b>0</b>
----------------------------------	--------	---------	--------------	---------	----------------------	----------

# Emergency Appeal

Final FINANCIAL REPORT

Selected Parameters			
Reporting Timeframe	2017/12-2019/5	Operation	MDRPH026
Budget Timeframe	2017-2019	Budget	APPROVED

Prepared on 28 Jun 2019

All figures are in Swiss Francs (CHF)

## MDRPH026 - Philippines - Tropical Storm Tembin

Operating Timeframe: 21 Dec 2017 to 31 Mar 2019; appeal launch date: 25 Dec 2017

### V. Contributions by Donor and Other Income

Opening Balance							0
Income Type	Cash	InKind Goods	InKind Personnel	Other Income	TOTAL	Deferred Income	
American Red Cross	150,475	37,317			187,792		
China Red Cross, Hong Kong branch	23,828				23,828		
Japanese Red Cross Society	269,471				269,471		
Other	237				237		
Red Cross of Monaco	23,574				23,574		
Swedish Red Cross	325,104				325,104		
The Canadian Red Cross Society (from Canadian Gov	87,783				87,783		
The Netherlands Red Cross (from Netherlands Govern	276,976				276,976		
<b>Total Contributions and Other Income</b>	<b>1,157,449</b>	<b>37,317</b>	<b>0</b>	<b>0</b>	<b>1,194,765</b>	<b>0</b>	
<b>Total Income and Deferred Income</b>					<b>1,194,765</b>	<b>0</b>	