

www.ifrc.org  
Saving lives,  
changing minds.

# Disaster relief emergency fund (DREF) Kyrgyzstan: Floods and mudflows

 International Federation  
of Red Cross and Red Crescent Societies

**DREF operation n° MDRKG008**  
**GLIDE n° FL-2012-000043-KGZ**  
**4<sup>th</sup> May 2012**

The International Federation of Red Cross and Red Crescent (IFRC) Disaster Relief Emergency Fund (DREF) is a source of un-earmarked money created by the Federation in 1985 to ensure that immediate financial support is available for Red Cross and Red Crescent emergency response. The DREF is a vital part of the International Federation's disaster response system and increases the ability of National Societies to respond to disasters.

**CHF 110,430 has been allocated from the IFRC's Disaster Relief Emergency Fund (DREF) to support the National Society in delivering immediate assistance to some 1,001 families (approximately 5,005 beneficiaries). Unearmarked funds to repay DREF are encouraged.**

**Summary:** Kyrgyzstan experienced the harshest winter with unusually low temperatures, heavy snowfalls throughout 2011 and 2012 and high precipitation, which exceeded the annual average by 2 – 2,5 times according to the Hydro Meteo Service of Kyrgyzstan. Snow melting and heavy rains caused mudflows and flash floods across Kyrgyzstan. Food stocks, home properties, livelihoods and infrastructure have been heavily damaged. Series of mudflows occurred on the territory of Naryn, Osh, Jalalabad and Batken regions including remote districts throughout April. The most destructive flash floods were in Osh, Batken and Jalalbad during the period of April 23 to April 29, 2012. According to the Ministry of Emergency Situations a total of more than 2,300 households were affected in Osh, Batken, Jalalabad and Naryn<sup>1</sup>.



Kulundu village of Leilek district, Batken oblast. Photo made by RCSK

The Red Crescent Society of Kyrgyzstan (RCSK) has been active in response activities since early April through its provincial and district Branches. The National Society National Disaster Response Team (NDRT) members and local disaster committees (LDC) were deployed to conduct situation assessment, render first aid, prepare distribution lists according to agreed criteria with local authorities and provide humanitarian aid to 161 households (805 people) in Batken Region and Osh Region with non-food items from the pre-positioned disaster preparedness stocks in its Emergency Response Centres (ERC) in Osh and Batken.

The Red Crescent Society of Kyrgyzstan intends to provide support to a total of 1,001 households (over 5,000 people). This figure includes provision of support to 840 households (4,200 people) and replenishment of the Red Crescent disaster preparedness stock in Batken and Osh ERCs that have already been distributed to support 161 households (805 people).

This operation is expected to be implemented over three months, and will therefore be completed by the end of July 2012. A final report will be made available by the end of October 2012.

[<click here for the DREF budget; here for contact details; here to view the map of the affected area>](#)

<sup>1</sup> Data from the Ministry of Emergency Situations of the Kyrgyz Republic and its official website: <http://mes.kg> by 29 April 2012 and RC Assessment Data in Naryn

## The situation

Kyrgyzstan experienced the harshest winter with unusually low temperatures, heavy snowfalls throughout 2011 and 2012 and high precipitation which exceeded the average by 2 – 2,5 times according to the Hydro-Meteo Service of Kyrgyzstan. Snow melting and heavy rains caused mudflows and flash floods across Kyrgyzstan affecting people's living conditions and livelihoods. Many people lost their houses. Food stocks, home properties, livelihoods and infrastructure have been severely damaged. Series of mudflows occurred on the territory of Naryn, Osh, Jalalabad and Batken regions including remote districts throughout April.

According to the Red Crescent Society rapid assessment, 424 households were affected by the early April floods in Naryn Region. The urgent needs were covered by the MoES and ongoing projects of World Food programme (WFP) and other organisations; hence the National Society identified the recovery phase as required intervention, which does not form part of this DREF request but will be covered from different sources.

The most destructive flash floods were in Osh, Batken and Jalalabad provinces in the period of April 23 – April 29, 2012. According to the Ministry of Emergency Situations data in total 1,886 households (9,430 people) were directly affected by disasters in Batken, Osh and Jalalabad.

For the detailed breakdown of the number of the affected people by regions, please see Table 1 below<sup>2</sup>:

**Table 1. No. Of affected households and people by region and village in the Country**

Province	District	Number of Village	# of affected H/H	# of people	# of totally destroyed houses	# of partially damaged
						houses
Batken	Leylek	8	563	2815	34	529
	Kadamjay	1	30	150		30
	Batken	3	108	540	1	107
	Uzgen	5	211	1055	2	209
	Karakulja	1	125	625	1	124
Osh	Karasu	4	257	1285	1	256
	Aravan	4	49	245		49
	Nookat	2	154	770	6	148
Jalalabad	Bazar-kurgan	3	190	950		190
	Suzak	1	40	200		40
	Alabuka	1	9	45		9
	Nooken	1	106	530		106
	Aksu	2	44	220		44
Naryn <sup>3</sup>	Naryn	3	223	1,115		
	Ak-Tala	2	156	780		
	At-Bashy	2	45	225		
<b>Total</b>		<b>43</b>	<b>2,310</b>	<b>11,550</b>	<b>45</b>	<b>1841</b>

<sup>2</sup> Data from the Ministry of Emergency Situations of the Kyrgyz Republic and its official website: <http://mes.kg> by 29 April 2012 and from RC assessment

<sup>3</sup> Data based on the Red Crescent Society rapid assessment in the early April floods

## Coordination and partnerships

The Red Crescent Society of Kyrgyzstan is a member of the inter-organisational Disaster Response Committee (DRCU) and is working closely with the Ministry of Emergency Situations and Rapid Emergency Assessment and Coordination Team (REACT)<sup>4</sup>. The Red Crescent Society of the Kyrgyz Republic is also coordinating closely its activities with the IFRC Country Representation in Kyrgyzstan through which coordination of technical and financial support will be provided to the National Society and with ICRC Delegation in country.

REACT Team was mobilised to conduct assessment the post-flooding situation in Naryn and Jalalabad on 7<sup>th</sup> April. On 27<sup>th</sup> April a coordination meeting of DRCU took place following the request of the Ministry of Emergency Situations to activate REACT in the Southern part of the country. The main issues discussed were the situation of flooding in Batken and Osh. The first and only organisation at the time conducting assessment in the affected areas was the Red Crescent Society of Kyrgyzstan and it was decided to wait for the outcomes of the Red Crescent assessment before any further decisions will be taken. On the 28<sup>th</sup> April, Batken unit of the southern REACT was deployed to Leilek rayon of Batken Region to assess situation in several settlements.

MoES provided 39 tents (each for 10 persons), 1,600 blankets, 400 children hygiene packs, 400 kitchen sets, 400 buckets, 100 sets of children clothing and 2 electric generators in all affected areas, detailed breakdown by villages was not provided.

As of morning of 2<sup>nd</sup> May, the following information presented in Table 2 was available on the activities conducted by different organisations broken down by sectors:

**Table 2. Information on activities by sectors since first approach of the Ministry of Emergencies of Kyrgyz Republic in May 2012**

Education	Food Security and agriculture	Health	Water, sanitation and hygiene (WASH)	Protection	Shelter and camp management
UNICEF was ready to broadcast reels on safe behaviour of children. UNICEF finished hand over process of 38 tents for general use to MoES	WFP provided MoES by 30,000 sand bags to cover needs in Naryn and Jalal-Abad affected areas. WFP is implementing distribution programme (6,000 tons) as previously planned activities for the lean period. GIZ covered part of expenses for 600 tons of barley transportation to Jalal-Abad and Osh regions.	WHO sent mobile psychological and social support brigades in Leilek rayon, and affected rayons of Jalal-Abad and Osh provinces	UNICEF is distributing 1,000 purification tablets and 300 hygiene kits for affected population in Leilek district through the Ministry of Emergency Situations	No needs in intervention identified.	UNCHR provided 660 blankets to affected population in Toguz-Toro rayon (Kazarman and Kargalyk villages) MoES provided to the affected population 39 tents for 10 persons, 1,600 blankets, 400 children hygiene packs, 400 dining sets, 400 buckets, 100 sets of children's clothing, 2 electric generators.

<sup>4</sup> **REACT** are mobile operative bodies of the **DRCU** assigned to implement rapid assessment of situation, to define prior needs, necessities and gaps, to provide rapid information and to coordinate disaster response activities and humanitarian relief in disaster affected areas. The teams, made up of staff of UN organisations, the Red Crescent Society, and other international and local NGOs, have been equipped with a minimum set of equipment (laptop computers, satellite telephones, and so on) under the project and vehicles by their agencies and trained with the support of OCHA's regional office.

Red Crescent Society of Kyrgyzstan is closely coordinating its plans and activities with Red Cross Red Crescent Movement partners. ICRC has expressed readiness to support the National Society in their response and repositioning activities. Among the items available with ICRC are buckets, jerry cans, blankets, hygiene sets (5 persons / 1 month), tarpaulins and kitchen sets. Further coordination meetings will be held to determine support from the ICRC.

A number of National Societies that work closely with the Red Crescent Society of Kyrgyzstan are being kept informed and updated on the actions taken.

## Red Cross and Red Crescent action

The rapid needs assessment was done by the National Society NDRT in the period of April 24-27, 2012. The assessment was conducted in 6 districts of Batken and Osh regions. During the assessment NDRT used mainly observations, semi-structured interviews with local authorities, MoES representatives and affected population. Two NDRTs (15 members) and LDCs are working in the affected areas since the very first day of the disasters (Osh and Batken teams) to render first aid, and prepare distribution lists according to agreed criteria. Jalalabad team was deployed on 28<sup>th</sup> of April and have already conducted assessment in three districts of Jalalabad region.

Red Crescent Society of Kyrgyzstan has distributed blankets, hygiene kits, and kitchen sets from its prepositioned emergency stock warehouses in Osh and Batken to a total of 161 families. The table below provides a detailed breakdown of the actual distribution conducted by the National Society.

**Table 3. Distributed items to be replenished**

Location	# of households supported	Hygiene kits	Blankets	Kitchen sets
Ylai-Talaa village, Kara-kuldja district, Osh oblast	57	57	285	
Kulundu village, Leylek district, Batken oblast	50	50	244	17
Internacional village, Leylek district, Batken oblast	34	34	139	11
Razzakov village, Leylek district, Batken oblast	20	20	88	10
<b>Total</b>	<b>161</b>	<b>161</b>	<b>756</b>	<b>38</b>

### The needs

The result of the assessment conducted by National Society NDRT and LDC members revealed the number of households whose houses are totally destroyed or partly damaged and who represent the most vulnerable population, such as: people with disabilities, single parent families, families with many children and older people living alone.

The situation of the affected people and their main needs identified during the Red Crescent assessment are as follows:

#### **Water and hygiene:**

- Water supply infrastructure in many villages was damaged with limited or no access to clean drinking water. People are forced to drink dirty water after the mudflow.
- Many toilets are damaged and many are both damaged and full. This results in people not being able to use toilets and defecating in the open.
- Soap and detergents stocks were washed away. This is true for both – households and local markets. There is evidence of continued trade but in very insanitary conditions.
- WHO and UNICEF are planning to provide water purification tablets.
- UNICEF plays a lead role in WASH sector

## **Shelter needs**

- It is expected that tents to all households in need of this support will be provided by the MoES. At present, 39 tents in total were distributed.
- A need in kitchen sets and bedding items was identified as many families' household utensils including kitchenware and bedding are dirty, wet, and not suitable for usage.

**Livelihoods** of the majority of households have also been severely affected by the floods and mudflows, among which are:

- Agricultural lands,
- Orchards
- Large and small cattle were killed. Cattle are one of the main sources of income and food.

Interviews with affected population identified that those families whose houses were destroyed lost all their **food stock**. Families receive help in the form of food products from their neighbors and relatives whose stocks are also limited and are being depleted soon.

The assessment conducted by the Red Crescent team concluded that there were no casualties, no injuries and no one went missing in the areas affected by the floods.

## **The proposed operation**

The assessment identified as the main and most urgent humanitarian needs the following items:

- **Kitchen sets (only first days after disaster)**. These were distributed from the Red Crescent emergency stocks and need to be replenished.
- **Blankets and warm clothing**
- **Food products**. The food parcel will consist of 50 kg of flour, 5 litres of oil, 10 kg of macaroni, and 10 kg of rice. A special agreement will be reached with suppliers to supply certain food items in water resistant and damp proof bags.
- **Means of hygiene**. Hygiene kits will include such items as washing powder, soap and washing detergent, toothpaste, tooth-brush(es), towels and hygiene towels.
- **Water purification tablets**. This will be covered by the UNICEF and WHO.

Based on the assessment results, Red Crescent Society of Kyrgyzstan proposes to launch DREF operation in order to support 840 most vulnerable households (4,200 persons) in Osh, Batken and Jalalabat regions according to the breakdown given above with food items and hygiene kits.

<b>Relief distributions (food items and hygiene kits)</b>
<b>Outcome: The immediate needs of 840 households (4200 persons) affected by mudflows and floods are met through the support provided by Kyrgyzstan Red Crescent.</b>
<b>Outputs (expected results) and activities planned:</b> Provision of hygiene kits (for 840 families) and food parcels (for 840 families) affected by mudflows and floods. Activities planned: <ul style="list-style-type: none"><li>• Conduct detailed needs assessment</li><li>• Prepare beneficiary lists</li><li>• Procure relief items in accordance with IFRC procurement procedures</li><li>• Transport relief items to the distribution points</li><li>• Distribute relief supplies and control supply movements from point of dispatch to end user.</li><li>• Monitor and evaluate the relief activities and provide reporting on relief distributions.</li><li>• Conduct beneficiary satisfaction survey</li><li>• Conduct lessons learned workshop</li></ul>

<b>Replenishment of the Red crescent Society of Kyrgyzstan disaster preparedness stocks (blankets, hygiene kits, kitchen sets)</b>
<b>Outcome: RCSK DP stocks in two Red Crescent Emergency Response Centres that were distributed to 161 affected families are replenished.</b>
<b>Outputs (expected results) and activities planned:</b> Replenishment of hygiene kits, kitchen sets and blankets distributed to families affected by mudflows and floods. Activities planned: <ul style="list-style-type: none"><li>• Procure relief items according to the IFRC procurement procedures</li><li>• Transportation of procured items and their repositioning in two RC Emergency Response Centres in Osh and Batken.</li><li>• Monitoring and control of supply movements from the point of dispatch to ERC's.</li></ul>

## Monitoring and Communication

The Red Crescent Society Headquarters, in close cooperation with IFRC Country Representation will monitor the progress and provide necessary technical advice.

A workshop will be organized on the national level with the participation of the teams involved in the implementation of the disaster response operation to share experiences and lessons learnt during the operation.

Visibility of the work of the volunteers is provided during the operations through publications and regular information to media. Weekly operation updates will be sent to the European Zone Office.

---

## Contact information

**For further information specifically related to this operation please contact:**

- **Kyrgyzstan Red Crescent:** Zhypar Myrzanalieva, Head of DM Department; office phone: +996(312)300190; mobile phone: +996(550)120035; email: [j.myrzanalieva@redcrescent.kg](mailto:j.myrzanalieva@redcrescent.kg)
- **IFRC Country Representation:** Olga DZHUMAEVA, Country Representative / Senior Advisor for Kyrgyzstan; office phone: +996 (312) 901 285; mobile phone: +996 (770) 221 202 email: [olga.dzhumaeva@ifrc.org](mailto:olga.dzhumaeva@ifrc.org)
- **IFRC Zone Office:** Alberto Monguzzi, Acting Disaster Management Coordinator; office phone: +36 1 8884 500; email: [alberto.monguzzi@ifrc.org](mailto:alberto.monguzzi@ifrc.org)
- **IFRC Geneva:** Christine South, Operations Support, phone: +41.22.730.4529, email: [christine.south@ifrc.org](mailto:christine.south@ifrc.org)



**Click here**

1. To see the DREF budget **[below](#)**
  2. Click **[here](#)** to return to the title page
- 

## How we work

All IFRC assistance seeks to adhere to the Code of Conduct for the International Red Cross and Red Crescent Movement and Non-Governmental Organizations (NGO's) in Disaster Relief and the Humanitarian Charter and Minimum Standards in Disaster Response (Sphere) in delivering assistance to the most vulnerable.

The IFRC's vision is to inspire, encourage, facilitate and promote at all times all forms of humanitarian activities by National Societies, with a view to preventing and alleviating human suffering, and thereby contributing to the maintenance and promotion of human dignity and peace in the world.

[www.ifrc.org](http://www.ifrc.org)

**Saving lives, changing minds.**



The IFRC's work is guided by Strategy 2020 which puts forward three strategic aims:

1. Save lives, protect livelihoods, and strengthen recovery from disaster and crises.
2. Enable healthy and safe living.
3. Promote social inclusion and a culture of non-violence and peace.

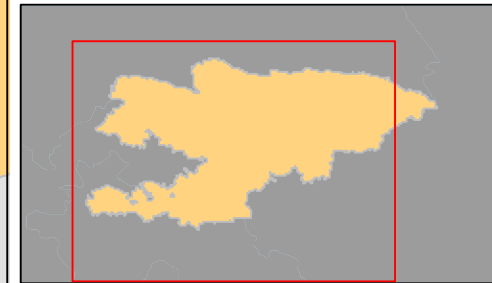
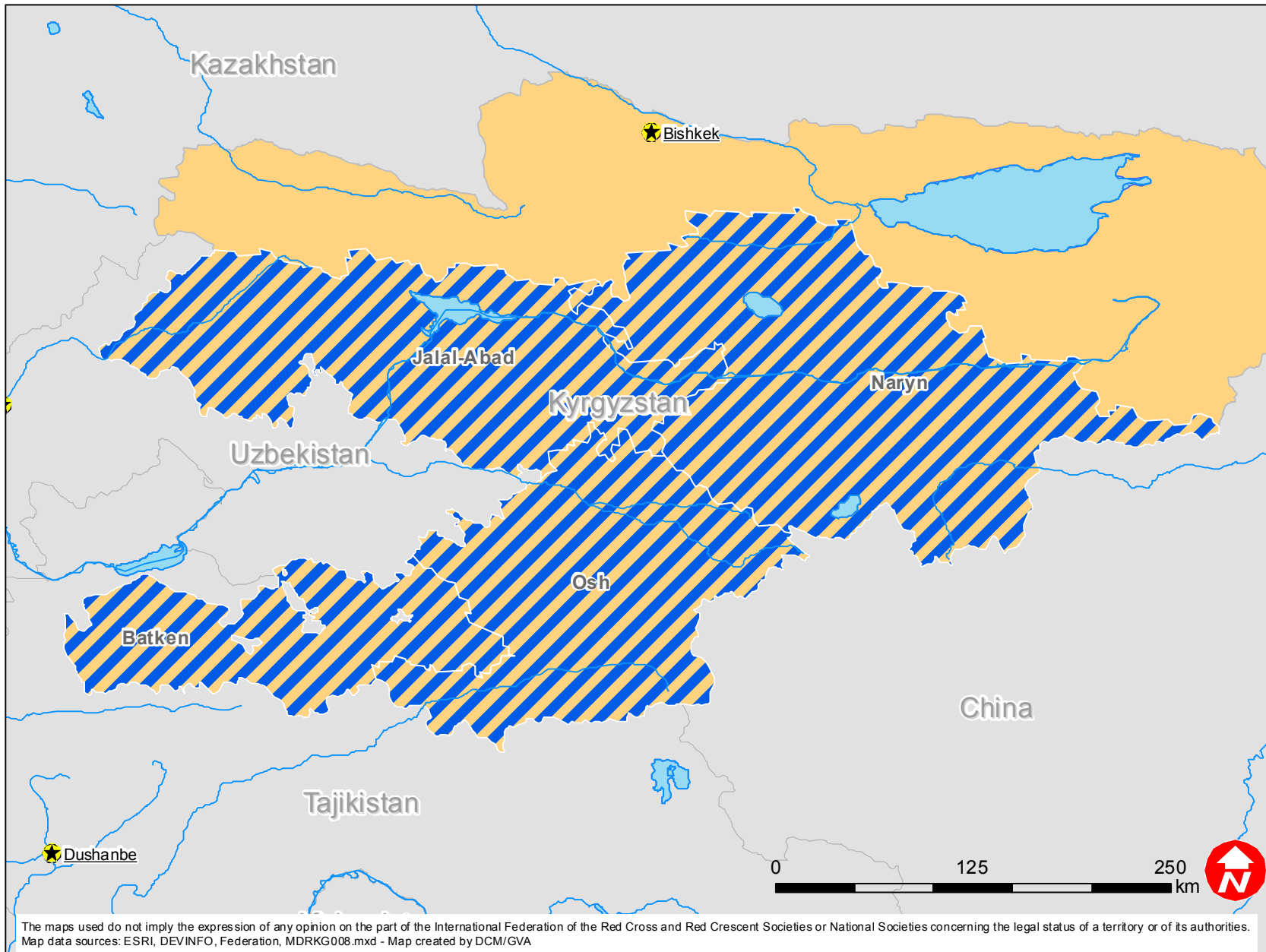
# DREF OPERATION


MDRKG008 Kyrgyzstan

<b>Budget Group</b>	<b>DREF Grant Budget CHF</b>
Shelter - Relief	
Shelter - Transitional	
Construction - Housing	
Construction - Facilities	
Construction - Materials	
Clothing & Textiles	9,072
Food	46,200
Seeds & Plants	
Water, Sanitation & Hygiene	28,028
Medical & First Aid	
Teaching Materials	
Ustensils & Tools	1,140
Other Supplies & Services	
Emergency Response Units	
Cash Disbursements	
<b>Total RELIEF ITEMS, CONSTRUCTION AND SUPPLIES</b>	<b>84,440</b>
Land & Buildings	
Vehicles Purchase	
Computer & Telecom Equipment	
Office/Household Furniture & Equipment	
Medical Equipment	
Other Machinery & Equipment	0
<b>Total LAND, VEHICLES AND EQUIPMENT</b>	<b>0</b>
Storage, Warehousing	750
Distribution & Monitoring	3,600
Transport & Vehicle Costs	6,900
Logistics Services	
<b>Total LOGISTICS, TRANSPORT AND STORAGE</b>	<b>11,250</b>
International Staff	
National Staff	
National Society Staff	2,250
Volunteers	50
<b>Total PERSONNEL</b>	<b>2,300</b>
Consultants	
Professional Fees	
<b>Total CONSULTANTS &amp; PROFESSIONAL FEES</b>	<b>0</b>
Workshops & Training	3,000
<b>Total WORKSHOP &amp; TRAINING</b>	<b>3,000</b>
Travel	
Information & Public Relations	500
Office Costs	1,000
Communications	1,200
Financial Charges	
Other General Expenses	
Shared Support Services	
<b>Total GENERAL EXPENDITURES</b>	<b>2,700</b>
Programme and Supplementary Services Recovery	6,740
<b>Total INDIRECT COSTS</b>	<b>6,740</b>
<b>TOTAL BUDGET</b>	<b>110,430</b>



# Kyrgyzstan: Floods



 Affected provinces