

www.ifrc.org  
Saving lives,  
changing minds.

## Emergency Plan of Action (EPoA) Bangladesh: Monsoon Floods

 International Federation  
of Red Cross and Red Crescent Societies

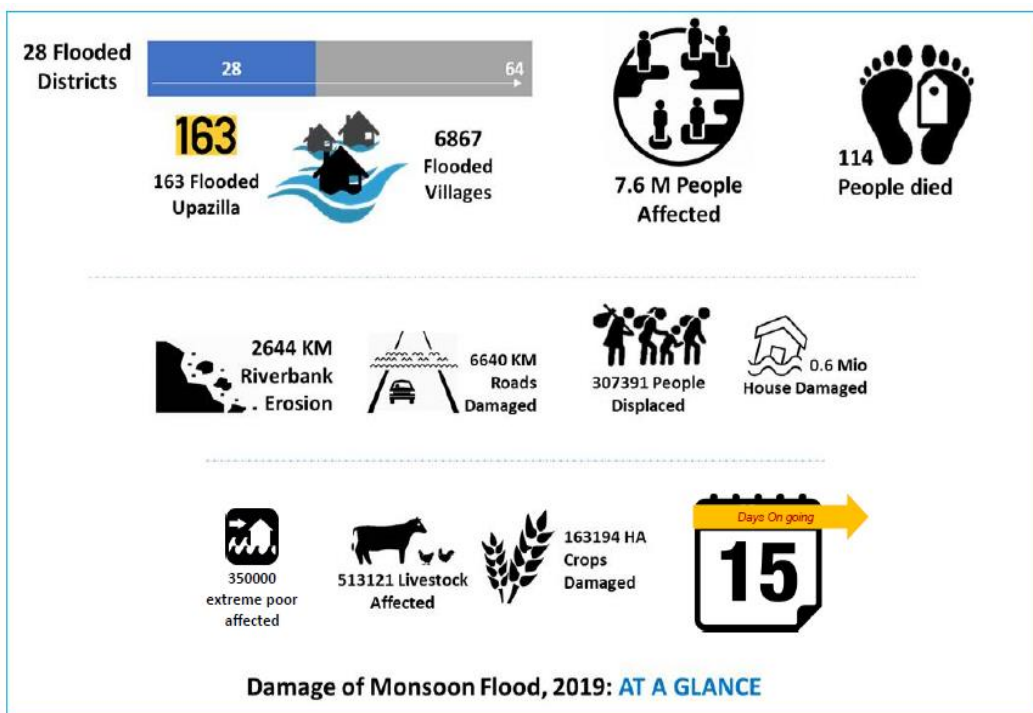
<b>Emergency Appeal n° MDRBD022</b>	<b>Glide n° <a href="#">FL-2019-000079-BGD</a></b>
<b>Date of issue:</b> 14 September 2019 <b>Date of Appeal launch:</b> 30 July 2019	<b>Expected timeframe:</b> 18 months <b>Expected end date:</b> 30 January 2021
<b>Category allocated to the of the disaster or crisis:</b> Orange	
<b>DREF allocated:</b> CHF 452,439; <b>Appeal funding requirements:</b> CHF 7 million	
<b>Donors contribution to this emergency appeal:</b> American Red Cross, British Red Cross, Hong Kong branch of Red Cross Society of China, Japanese Red Cross Society, Swedish Red Cross, The Canadian Red Cross Society (from Canadian Government), The Netherlands Red Cross (from Netherlands Government), and from a private donor from the Netherlands.	
<b>Appeal coverage:</b> 15% <see <a href="#">Donor Response</a> >	
<b>Total number of people affected<sup>1</sup>:</b> 7.6 million	<b>Number of people to be assisted:</b> Immediate phase: 100,000 (20,000 households) Anticipated phase: 50,000 (10,000 households)
<b>Host National Society presence (n° of volunteers, staff, branches):</b> Bangladesh Red Crescent Society (BDRCS) has over 800,000 volunteers and staffs, and 68 units all over the country. The National Society is well known and respected in the country and works closely with the Government. The role of the BDRCS is well articulated in the Government's Standing Order on Disaster (SOD) which is the main guiding and regulating tool for the disaster response and management in Bangladesh.	
<b>Red Cross Red Crescent Movement partners actively involved in the operation:</b> American Red Cross, British Red Cross, Canadian Red Cross, Danish Red Cross, German Red Cross, Italian Red Cross, Japanese Red Cross Society, Qatar Red Crescent, Swedish Red Cross, Swiss Red Cross, Turkish Red Crescent, and the International Committee of the Red Cross (ICRC).	
<b>Other partner organizations actively involved in the operation:</b> Government of Bangladesh (GoB), UN Resident Coordinator (RC), UNICEF, WFP, UNFPA, Terre des Hommes (TdH), Oxfam, START Network, Save the Children, Brac, Care, World Vision, Caritas, Friendship, SKS Foundation, Catholic Relief Services (CRS), Actions Aid Bangladesh, Sapling.	

## A. Situation analysis

### Description of the disaster

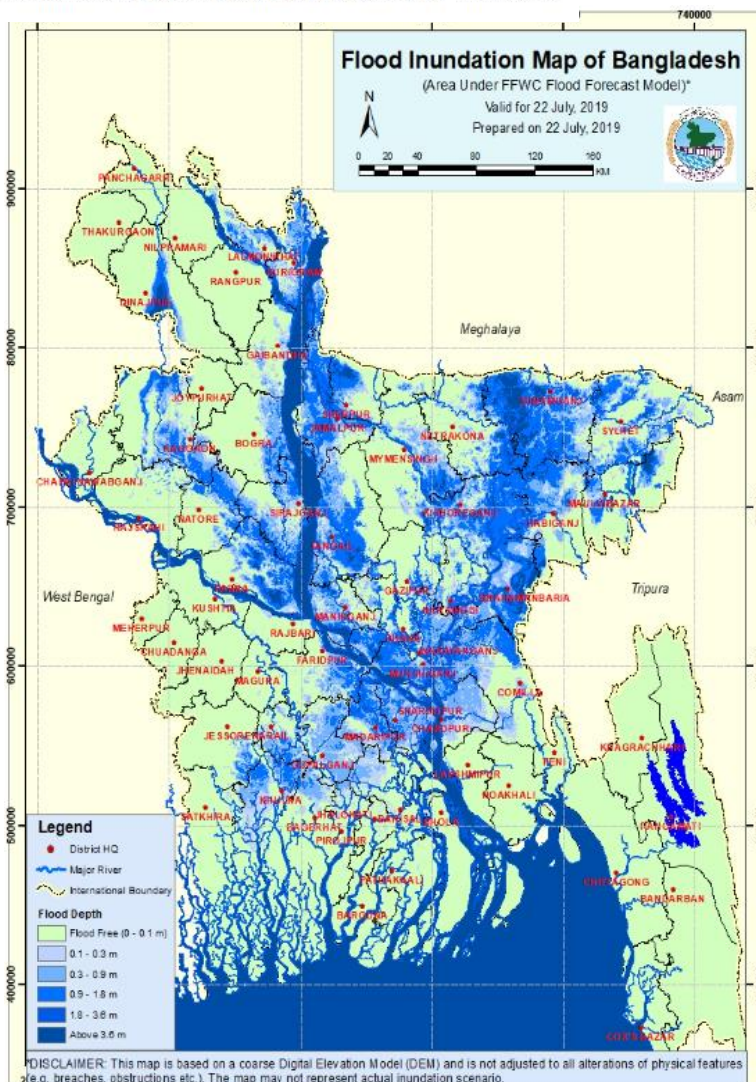
Heavy monsoon rains across Bangladesh, India and Nepal have battered significant parts of those three countries and caused disastrous floods, affecting millions of lives. In Bangladesh, despite delayed monsoon onset, this heavy rainfall occurred during the first half of July, especially during the second week. These heavy rains have led to landslides and extreme flooding, resulting in food and clean water shortages as well as threats from waterborne diseases in the country. Bangladesh, a low-lying delta country of over 170 million people with more than 230 rivers, is particularly prone to monsoon floods because of overflowing rivers and the heavy surge of water from upstream India. This appeal has been launched to respond to the current flooding crisis, and in anticipation of further humanitarian impacts from the 2019 monsoon season.

<sup>1</sup> According to the Needs Assessment Working Group (NAWG), Bangladesh situation report dated 28 July 2019.



Data Source: National Disaster Response Coordination Cell (NDRCC), , DPHE, DGH, DAE, DLS (Up to 24<sup>th</sup> July 2019)

The current flood disaster started from 7 July due to the heavy monsoon rain and water from upstream flooding in Nepal and India. This extreme monsoonal phenomenon has triggered severe flooding in low lying areas of north and north-eastern region of Bangladesh. More specifically six days of heavy rain and onrush of upstream waters have flooded low-lying areas of Kurigram, Gaibandha, Lalmonirhat, Chattogram, Bandarban, Rangamati, Sylhet, Sunamganj, Bogura, Nilphamari, Khagrachari, Cox's Bazar, Feni, Netrakona, Sirajganj, Jamalpur, Tangail, Moulvibazar, Habiganj, Sherpur, and Brahmanbaria, Chandpur, Faridpur, Madaripur, Manikganj, Munshiganj, Rajbari and Shariatpur districts. Additionally, the heavy rain has triggered landslides in some areas of Chattogram Hill Tract (CHT) districts along with Cox's Bazar. While the monsoon season normally brings annual floods to the country and wider region, this year, widespread flooding in upstream countries, Nepal and India, where millions of people have been severely impacted, has meant that the scale of the flooding this year has been significantly exacerbated. The upstream flood waters have led to a rapid rise in the water flow in rivers such that all rivers in Bangladesh were running over danger levels in over 15 locations. Even though, compared to the 2017 monsoon flood, the 2019 flood is not that widespread, it has impacted many districts, and the distress to the people and disruption created is severe and may last for a longer period. This is notably since large sections of some embankments upstream have been breached, which might lead to prolonged flooding and waterlogging in affected districts. The impacts of this event are much larger in scale than they would be in an average annual monsoon event.



Inundated part of the country as of 22 July 2019. (Source: FFWC)

The publicly available information and data also indicate a huge impact of these floods in Bangladesh. According to the National Needs Assessment Working Group (NAWG), Bangladesh situation report dated 28 July 2019, more than 7.6 million people have been affected in 28 districts, over 300,000 people displaced, approximately 600,000 houses damaged, and 114 people have died. On top of that, the media reported that about 532,000 hectares of crops have been destroyed<sup>2</sup>. It is also reported that embankments have been damaged and inundated in new areas. Though the rain has stopped now, the disaster is not yet over. In most of the inundated areas, the flood waters are gradually receding, and more damage and impact are being uncovered.

## Summary of the current response

### Overview of Host National Society

BDRCS, established in 1971, is one of the leading humanitarian organizations in the country with its district units (branches) in all 64 districts of the country. In addition, it has 4 city units that brings the total number of units to 68, hence it has a countrywide network with over 800,000 volunteers and staff.

BDRCS has been active since the beginning of the floods. Some 575 Red Crescent volunteers and 100 staff were immediately mobilized to various districts to respond to the disaster. Red Crescent Youth (RCY) volunteers have supported awareness programmes, evacuation and the provision of first aid. RCY also supported local administration in distributing government food stocks to affected people who have been evacuated to safe shelters. Furthermore, RCY volunteers also supported the fire service and civil department in repairing the main road that connects Rangamati with Chattogram and the rest of the country.



Left - BDRCS carrying out cash distribution among 500 households in Kurigram district, supported by German Red Cross. Right - a Red Crescent volunteer is helping an elderly woman with the dry food package in Bogura. (Photo: BDRCS)

BDRCS has mobilized 2,900 hygiene parcels<sup>3</sup> from the joint disaster preparedness stock of BDRCS and IFRC to be distributed to affected people in the following districts: Netrokona (500 boxes), Bandarban (500 boxes), Chattogram (400 boxes), Sunamganj (400 boxes), Rangamati (400 boxes), Cox's Bazar (300 boxes; for communities outside of the population movement camps), Khagrachari (200 boxes) and Chattogram City (200 boxes). BDRCS has already distributed dry food packages to 9,654 families. In Bandarban, BDRCS provided cooked food among the flood affected people. In addition to that, BDRCS provided food packages for two weeks to 2,370 families. BDRCS, with support of trained RCY, National Disaster WatSan Response Team (NDWRT) members, have already deployed water purification

<sup>2</sup> The Daily Star, dated 29 July 2019.

<sup>3</sup> Hygiene parcel box consists of 12 pcs of bath soap, 5 pcs of laundry soap, toilet tissue 6 pcs, 40 pcs of sanitary pad, bath towel large 3 pcs and small 2 pcs, razor 4 pcs, tooth brush 5 pcs and tooth paste 2 pcs.

units in Tangail, Gaibandha, Jamalpur and Sirajganj districts to provide safe drinking water. BDRCS with the support of German RC and Swiss RC, has been the first one to start early action and response activating its Forecast based Early Action (FbEA) protocol and provided multipurpose cash grants to 1,000 families in Kurigram and Gaibandha districts under the Forecast-based Early Action (FbEA) programme. Each family received BDT 4,500 (CHF 52) in the form of a Multi-Purpose Cash Grant <sup>4</sup>(MPCG) through Bangladesh Post Office (BPO) to meet their immediate needs. BDRCS has mobilized three mobile medical teams which have now treated 3,081 patients. BDRCS has also distributed tarpaulins, tents and shelter toolkits to 2,000 flood affected families.

BDRCS activated its flood contingency plan and opened the Emergency Control Room at the initial stage of the disaster and kept all its volunteers and staff on high alert for possible deployment. National Disaster Response Team (NDRT) members, who are specially trained for disaster response, were put on high alert and some of them have now been deployed in the disaster affected districts. As always, units were active and coordinating with the local authorities to ensure a timely response to the people in need. On top of that, Unit Disaster Response Team (UDRT) and Community Disaster Response Team (CDRT) members were mobilised where possible.

Coordination meetings took place regularly at the BDRCS NHQs and attended by all Red Cross and Red Crescent partners that are actively working on disaster readiness and response with the host National Society. BDRCS attended an inter-ministerial coordination meeting called by the GoB on 12 July 2019. BDRCS, IFRC and PNSs are regularly attending meetings called by the UN RC and Ministry of Disaster Management and Relief (MoDMR) concerning the current floods in the country and coordinating with other humanitarian agencies to ensure effective humanitarian response and avoid any duplication.

Situation update from Institute of Epidemiology, Disease Control and Research (IEDCR) on 31 August highlighted that there are about 51,734 patients in August 2019 where in total throughout the year is 70,195. During August, the number of patients increased during the first and second week, then started to decline from third and fourth week. Considering the current Dengue situation, BDRCS has initiated a comprehensive Dengue Awareness Campaign 2019 countrywide. This campaign will be limited within distribution of leaflets, dissemination of key messages, awareness sessions in educational institutions and cleaning activities. The Dengue Awareness Campaign has already mobilized RCY volunteers and planning to provide 400,000 leaflets to educational institutions and among general people. The Holy Family Red Crescent Hospital and other BDRCS hospitals in different districts are supporting dengue patients by utilizing its countrywide staff/volunteers' network. Until 6 August 2019, BDRCS has provided medical support to around 1,100 dengue patients from Holy Family Red Crescent Medical College hospital. In addition, BDRCS Blood Centres are supporting the provision of blood throughout the country. To date around 1,500 units of platelets have been provided to dengue patients through Red Crescent Blood Centre.



Emergency coordination meeting at BDRCS NHQ together with IFRC, ICRC and PNSs on 13 July 2019. (Photo: IFRC)

### Overview of Red Cross Red Crescent Movement in country

IFRC is helping BDRCS with the initial mobilization of funding and personnel as well as in preparing situation reports and providing technical inputs for a coordinated response operation. IFRC is part of the NAWG and is also participating in different coordination meetings, including the Humanitarian Coordination Task Team (HCTT), Strategic Executive Group (SEG)<sup>5</sup> and cluster working group meetings. IFRC Country Office (CO) is liaising with IFRC's Asia Pacific Regional Office (APRO) and through the APRO with IFRC's Secretariat in Geneva as well as with neighbouring country offices to understand and respond the current crisis better. IFRC is also closely monitoring the evolving situation and has been publishing information bulletins and situation updates regularly. To meet the immediate needs of 50,000 affected people, IFRC has allocated CHF 452,439 from its [Disaster Relief Emergency Fund \(DREF\)](#) on 18 July 2019 which helped BDRCS expedite the response operation without any delay. As the flood situation evolves, based on the request from BDRCS, IFRC has launched an emergency appeal on 30 July seeking CHF 7 million.

Currently there are 11 Red Cross Red Crescent partners present in the country. They are American Red Cross, British Red Cross, Canadian Red Cross, Danish Red Cross, German Red Cross, Italian Red Cross, Japanese Red Cross

<sup>4</sup> MPCG 4500 bdt (CHF 52) set by the National Cash Working Group (NCWG) Multipurpose Cash Grant (MPCG) Guideline to meet the minimum expenditure basket of the beneficiary for one month

<sup>5</sup> This is an inclusive decision-making forum consisting of heads of international humanitarian organizations to ensure an effective humanitarian response to the crisis. To support the Government of Bangladesh in managing and responding to the crisis, humanitarian actors coordinate under the leadership of the SEG at the Dhaka level, co-chaired by the UN Resident Coordinator, IOM, and UNHCR. The membership includes UN agencies, INGOs (ACF, MSF and Save the Children), and the International Red Cross and Crescent Movement (ICRC, IFRC).

Society, Qatar Red Crescent, Swedish Red Cross, Swiss Red Cross and Turkish Red Crescent. While some of them are involved in longer-term programming including Disaster Risk Reduction (DRR), community resilience and BDRCS' Cyclone Preparedness Programme (CPP) most of them are also supporting BDRCS in assisting the displaced people from Rakhine (Myanmar) into Cox's Bazar (Bangladesh). In addition, all of them supports BDRCS in its capacity strengthening and development. ICRC as well is present in Bangladesh since the 1970s and has a close partnership with BDRCS.

In terms of partners' readiness and existing relief stock in the country, Danish Red Cross has contributed bi-laterally food packages (2,500 dry food and 2,500 standard food packages). British Red Cross is ready to replenish some relief items distributed from the current Disaster Preparedness (DP) stock. Turkish Red Crescent, Qatar Red Crescent, Swiss Red Cross and Swedish Red Cross are keeping their headquarters updated and ready to support BDRCS as needed. As part of Forecast based Financing (FbF) initiative, BDRCS provided cash grant support to 479 households in Kurigram (with German Red Cross support) and 431 household in Gaibandha (with Swiss Red Cross support). German Red Cross has also secured funding to support 3,000 households in Kurigram, Tangail and Jamalpur with unconditional cash grant and seeds. Movement partners have expressed their willingness to contribute to the IFRC emergency appeal.

As IFRC is the convener of the Global Shelter Cluster and agencies are requesting for such support, the IFRC in-country Shelter Cluster Focal Point is regularly coordinating with other agencies as well as with the Global Shelter Cluster Coordination Team.

ICRC has a delegation in country and is one of the Movement partners of BDRCS. At this stage they are not contributing to this emergency response, but they are attending the coordination meetings and are kept informed.

#### **Overview of non-RCRC actors in country**

The GoB is continuously monitoring the situation through its Bangladesh Meteorological Department (BMD) and Flood Forecasting and Warning Center (FFWC), while they have taken necessary measures to support the flood affected people through its MoDMR. To this date, the GoB has allocated a total number of 28,350 metric tons of rice, 118,000 packets of dry food, BDT 491,50,000 (approx. CHF 557,863) as cash support, another amount of BDT 163,500,000 (approx. CHF 1,855,760) for house repair, BDT 1,800,000 (approx. CHF 20,430) for baby food and BDT 2,400,000 (approx. CHF 27,240) for livestock fodder to affected people in all 64 districts through its regular response mechanism. Also, 8,500 makeshift tents and 54,500 bundles of iron sheets were allocated by the GoB and 2,451 medical teams and 11 water treatment plants were deployed. The Department of Livestock Services (DLS) vaccinated 127,057 livestock and 388,176 poultry. Immediate treatment of 65,977 livestock and 295,701 poultry was also provided. Ministry of Disaster Management and Relief (MoDMR) allocated 94 recreational kits for distribution, with the provision of awareness raising sessions on the prevention of sexual exploitation and abuse.

The Shelter Cluster coordination team has been monitoring the flood situation from the beginning and is providing technical inputs to develop a humanitarian response plan and strategy for responding to emergency shelter and recovery needs. To further assist with coordination of shelter assistance in the impacted areas, and as IFRC is the Convener of the Global Shelter Cluster, surge Shelter Cluster Coordinator position has been created and deployed through the EA. The purpose of the Coordinator is to: share data (via 4W matrix) and assessments across shelter sector; identify gaps in assistance and advocate for further funding; coordinate aid by location and type to best target assistance and; ensure equity of aid to beneficiaries by encouraging standardization of non-food items (NFIs)/cash assistance/training.

WFP provided 193.94 metric tons of High Energy Biscuits to 51,717 households in three districts (Kurigram, Gaibandha and Jamalpur). WFP also activated FbF and distributed cash in Kurigram district. The Ministry of Agriculture (MoA) initiated a 21.23 million BDT worth recovery program for 32,121 farmers to prepare seedbed and seedling in ten districts. FAO is supporting the MoA and Ministry of Livestock and Fisheries (MoLF) for situation monitoring, damage assessment and technical support. UNICEF provided 7.5 million Water Purification Tablets (WPT) which Department of Public Health and Engineering (DPHE) is distributing to affected communities. UNICEF also provided 10,000 hygiene kits, 20,000 jerry cans and two mobile water treatment plants. UNICEF reached 25,000 severely affected people with critical lifesaving messages through community volunteers. UNICEF prepositioned 370 Emergency Recreation Kits, 1,278 Education in Emergency (EiE) kits and 200 tarpaulins to be used for 100,000 affected people. UNICEF also provided therapeutic milk supplies through the Institute of Public Health Nutrition (IPHN) to ensure the treatment of Severe Acute Malnourished (SAM). UNICEF is supporting local primary education officials with education in emergencies kits to be distributed among 26,000 children in the worst affected districts of Kurigram, Gaibandha, Sirajganj, Jamalpur, Tangail, Sylhet, Bandarban and Sunamganj. EiE kits content is developed locally and contains essential learning and teaching materials and supplies to resume education disrupted during disasters. UNFPA will mobilize 20 mobile medical health camps in Kurigram and will deploy 10 midwives to work in the flood affected districts. UNFPA will strengthen health care facilities with pre-positioned reproductive health kits. UNFPA has provided 3,500 dignity kits in support of the Ministry of Women and Children Affairs (MoWCA) for restoring the dignity of women and girls in temporary shelters and, psychosocial support for the well-being of women and girls. Plan International Bangladesh is implementing project in

Nageshwari Upazila of Kurigram district for awareness building on GBV, Male engagement, Psychosocial support for women and girls and community protection mechanism for GBV prevention and response. They will support 20 primary and secondary schools in Kurigram district by undertaking cleaning of school premises through Cash for Work, additional coaching support to recover lost days of education of the schools that are severely affected, distribution of education materials to the students, small scale mitigation work in school through Cash for Work (repairing of school connecting road, playground raising etc.). BRAC planned to support 159 non-formal BRAC schools in Kurigram, Jamalpur, Sumangamj and Sylhet districts. World Vision Bangladesh will be supporting families with MPCG in Bandarban and Jamalpur districts. Part of the cash assistance will be devoted to purchasing education related supplies. Save the Children secured funding to implement an Education in Emergency project targeting 60 non-formal schools in Chattogong and Cox's Bazar districts with response package combining repairs of schools, provision of education materials and WASH assistance. They also planned to reach 15,000 beneficiaries with off-farm livelihood support in Kurigram and Sirajgong district.

NGOs supporting the national efforts including through multi-purpose cash are: CRS, BRAC, TDH, Friendship, GUK, MJSKS, SKS, Solidarites, MMS, ASOD, NDP, CARE, Concern Worldwide, Christian Aid, Islamic Relief, Muslim Aid, Aid Comilla, HelpAge, ActionAid, Caritas Bangladesh, World Vision, United Purpose, Save, Habitat for Humanity, Plan Bangladesh, Oxfam, DAM and BNKS. Their support is notably funded by the allocations made by Start Fund Bangladesh amounting to £1,000,000 (approx. CHF 1,186,540) for relief operations in Sirajganj, Jamalpur, Kurigram, Gaibandha, Bandarban and Bogra.

While BDRCS is coordinating with the GoB at national and local levels, IFRC and Red Cross Red Crescent partners are coordinating with the HCCT, sectoral clusters, NAWG, UNRCS, MoFA, MoDMR by attending meetings and sharing information on regular basis to avoid duplication of support provided to the flood affected areas. A 4W matrix has been developed and BDRCS and other agencies are placing relevant intervention information there. It is expected that a compiled version of that will be made available for HCCT soon.

## Needs analysis, targeting, scenario planning and risk assessment

### Needs analysis

Considering the severe flood situation, BDRCS mobilized needs assessment teams from 18 to 22 July 2019. Also, NAWG has conducted a Joint Need Assessment (JNA), Phase-1 Light<sup>6</sup> and published report on 28 July, in coordination with GoB and the humanitarian community in the country. Government situation reports and all the need assessment reports indicate enormous damages and needs for food, water, sanitation, rehabilitation of livelihoods, health and shelter support. Significant damages to infrastructure, including roads, have also been reported, impacting access of affected people to health care. Highly vulnerable persons in displacement situations are severely impacted.

Considering that the monsoon season will continue for two months, a further deterioration of the situation is possible. Risks of landslides, risk of expansion of flood areas, flash floods, prolonged waterlogging phenomenon in coming days are not excluded. There is a possibility of disease outbreak due to polluted water as sanitation systems have been disrupted.



Flood situation in Sariakandi, Bogura district, 22 July 2019. (Photo: IFRC)

It is already evident that, due to limited access to community shelters, a large number of the affected population have moved to higher lands such as embankments and roads where they are living under open sky without basic facilities. Some of them have now started going back to their homes but most of the houses are filled with thick mud and debris that dwellers are finding difficult to clear. According to the findings of the needs assessment teams and issues highlighted by the affected people, shelter support is one of the urgent needs in the communities. Most of the areas are still inundated and waterlogged. The excessive water in the past few days has already caused riverbank erosion in at least

<sup>6</sup> As the mandate goes, NAWG has been closely monitoring the flood situation since the beginning. Then analyzed the data from GoB bulletins and triangulated it with inter-ministerial data sources (NDRCC, DPHE, DGH, DAE, DLS etc) and Pre-crisis secondary database (BBS, 2011). NAWG has also collected small scale assessment reports and analysis done by other agencies. Good practices for other countries' assessment and the literatures are reviewed as references. Finally, as part of JNA, customized JNA Phase 1 format is sent out to the local stakeholders in 9 districts for primary priority validation of the needs. Consolidating all these data and information, while consulting with sectoral experts (HCTT coordinators), NAWG has compiled this report to come up with the priority needs.

three districts. There is a further risk of river erosion when the water goes down causing damage to vulnerable houses of the char and low land areas. This will lead to further shelter related crisis in the affected areas.

Drinking water sources have been contaminated by flood waters and according to the JNA, 73,000 tube wells are damaged. This is forcing the affected population to access alternative water sources in distant areas with communication difficulties. Many people are using flood water by boiling and are also trying to consume less. Assessment teams have also found that people are still living in temporary shelters with very minimum cooking facilities. Shortage of safe drinking water is a pressing concern and one of the priorities needs along with the sanitation facilities. There is obviously high concern regarding inadequate sanitation and hygiene facilities. The needs assessment team found that many people are using temporary latrines which are only covered with jute bags with very poor safety conditions. People who are still on the roadside or embankment do not have adequate sanitation facilities and in many cases a single latrine is shared by many families.



Flood affected people taking shelter on village roads/embankment. Left - settlement of people from Tangail district and right - from Gaibandha district. (Photos: BDRCS, IFRC)

It is anticipated that waterborne and vector borne diseases<sup>7</sup> are likely to go up if conditions do not improve and this will also exacerbate any pre-disaster health and nutrition issues. Government of Bangladesh has deployed 2,451 mobile medical teams to address the needs of flood affected people. But still access to public services such as health is severely limited in the flood affected districts. BDRCS also reported some of its MCH centres have been affected by floods. According to JNA, 5 million people are at high risk of water-related diseases in worst affected districts. An increase in health concerns is reported including diarrhoea, acute respiratory infection (ARI) in different districts.

Due to displacement of people and loss of food stocks in the flood waters, there is an urgent need for food assistance. Short-term food security appears more imminent a problem; however, there will still be a significant impact on the long-term food security due to the impact on crops and livelihoods. Less work opportunities follows reduced purchasing capacity of the vulnerable families, which will result in a prolonged lean season negatively affecting food security and nutrition status. Elderly, female headed households, pregnant and lactating women and those already relying on food aid (such as the VGF - Vulnerable group Feeding - a national safety nets programme) are the most vulnerable in terms of food security, in relief as well as in the recovery phase.

FAO has reported that the floods in northern areas have caused significant loss of livestock and fisheries. Assessment data shows that many people have sold their livestock at low prices to buy the necessary items for their families as their normal income sources have been disrupted. The report indicates that damages to crops and livestock in the northern districts have severely destroyed livelihoods which will result in long-term negative impact to household income and food insecurity.

Schools/Madrasah in the affected areas of northern districts are being used as shelters which may impact children's access to education. If the situation deteriorates further, it will most likely extend or increase current displacement with the potential multi-sectoral risks associated, especially in terms of protection, gender-based violence, mental-health, school drop-out issues notably for children, women as well as people living with disabilities.

It is also worth noting that large parts of the affected areas, and particularly the worst affected districts, have a high level of pre-existing vulnerabilities, including poverty, malnutrition and social deprivation, and the recent flooding has further

<sup>7</sup> According to the National Health Emergency Operation Centre, during 10-21 July 2019, 2825 diarrhoea cases, 987 Acute Respiratory Infection – Pneumonia, 717 skin diseases reported.

aggravated the condition of the affected population. It is therefore imperative to address not only the emergency needs but also the long-term needs of the communities.

There is limited information regarding Protection vulnerabilities, for instance children with disabilities, separated children and data of children or women in informal or formal shelters. Restoring dignity for flood-affected women and girls and increase access to life-saving referral services could be a crucial need. It is recommended to provide off-farm livelihood support to flood affected women to prevent negative coping mechanism. Integration and advocacy with other clusters and government to ensure mechanism are in place to identify potential negative consequences of GBV.

During this monsoon season, the risk of dengue remains high, particularly from June to September/October. This year it took a severe turn as the number of patients is increasing. According the last report of Directorate General of Health Services (DGHS) of Bangladesh (published on 5 Aug 2019), a total of 16,223 patients were admitted in hospitals in July and 9,006 patients in August. In addition to the government, WHO and other agencies response, there is still a need to raise public awareness about dengue as well as promoting community clean ups to prevent build-up of stagnant water as part of community prevention activities. It is also identified that affected people are in distress and need psychosocial support to overcome the situation.

### **Targeting**

BDRCS is targeting 150,000 people in 15 most affected districts due to monsoon flood: Jamalpur, Kurigram, Gaibandha, Tangail, Sylhet, Sirajganj, Bogura, Sunamgonj, Sherpur, Netrakona, Lalmonirhat, Moulvi Bazar, Faridpur, Manikgonj and Nilphamari. Considering the severity of dengue during this monsoon season, Dhaka has been targeted along with the above flood affected districts.

Priority will be given to those displaced people living in temporary shelters or makeshift houses. In addition, BDRCS will prioritize and ensure the dignity, access, participation and safety of the most vulnerable population, which are the elderly persons, children including adolescents, marginal income farmers, female-headed households, lactating mothers, and people with disabilities. As the disaster is still evolving and total damage information is yet to come, BDRCS, in consultation with concerned stakeholders, is targeting the most affected districts and subsequently most affected communities. IFRC is coordinating very closely with in-country PNSs to ensure a coordinated response. The BDRCS district units are working closely with local authorities and affected communities from the beginning of the monsoon flood.

BDRCS will deploy NDRT members and volunteers to conduct a household assessment to identify the most vulnerable affected households for both emergency and recovery assistance. The operation will continue to explore appropriate ways to engage communities and ensure selection of the most vulnerable. Building on the BDRCS and IFRC CO experience in the area of Community Engagement and Accountability (CEA) and with the active partners and stakeholders of the Communications with Communities (CwC) group there will be several opportunities to explore ways to ensure quality programming focusing on assuring Protection and promoting Gender Equality and Inclusion through IFRC minimum standards in emergency settings and beneficiary selection targeting and prioritizing those who are most at risk in consultation with the affected communities and community engagement. Vulnerability is influenced by displacement, geographic location, specific cultural and social power dynamics, access to information and educations and other services.

BDRCS will also actively welcome and explore doing more outreach and messaging to the communities to raise awareness and provide essential information regarding the operation, setting up systems to receive feedback, follow up on issues and celebrate successes coming from the areas of the operation. In addition, BDRCS and IFRC are aware of a possible duplication of work and are working closely with other humanitarian actors using the 4Ws tools, attending cluster meetings, and participating in government led consortiums and coordination mechanisms.

### **Learnings from previous flood operations**

BDRCS is continuously incorporating lessons learned and best practices from earlier operations into the new operations and programming in order to help vulnerable people more effectively. The last flood operation implemented in 2017 was

a good learning point that has helped BDRCS improve and strengthen both the delivery of cash-based interventions and DRR programming as well as beneficiary data management, data collection and analysis.

Other lessons from the final evaluation of the 2017 flood operation:

- To develop exit strategy at the outset.
- Forming Community Development Committees at early stage of the recovery operation.
- Strengthen the institutional capacity of BDRCS by increasing the size of Disaster Response team to handle multiple disasters at any one time.
- Continue with the cash Based Interventions (CBI) and closely follow the Cash SOP throughout the operation.
- Plan more than one income generating activities (IGAs) in livelihood interventions rather than investing in one; and keep a mixture of IGAs – with one giving periodic large income while another giving regular subsistence income.
- The need for involvement of community volunteers and community committees.

As the operation progresses, other lessons will also be considered. Other DRR best practices such as raising house/latrline plinth, elevating tube well plinth above the usual flood level, cash for work for community infrastructure improvement and owner driven housing repair. These approaches have worked well in previous operations.

### Scenario planning

Given the continued monsoon season, the flood situation may deteriorate further due to upstream floods and active monsoon. This appeal therefore has a provision for an anticipated phase which will allow BDRCS to respond quickly with the provision of emergency food, shelter, WASH and health services for additional 10,000 families. In addition to that based on needs and priorities, this appeal will be revised in consultation with the host National Society and IFRC APRO to accommodate evolving needs coming through the detail recovery assessment that will be conducted shortly.

According to the situation report of Bangladesh Meteorological Department Storm Warning Centre, the depression over Northwest Bay and adjoining coastal areas of Bangladesh and West Bengal moved west-north-westwards and intensified into a Deep Depression and crossed Odisha-West Bengal coast of India (at about 16:00 of 7 August 2019). Then it moved west-north-westwards and weaken into a depression and now lies over Jharkhand and adjoining areas of India. It is likely to move in a west-north-westerly direction further and weaken gradually. The axis of monsoon trough runs through Rajasthan, Uttar Pradesh, Madhya Pradesh, centre of the depression thence north-eastwards to Assam across Bangladesh. Monsoon is active over Bangladesh and strong over North Bay. It has been forecasted that light to moderate rain/thunder showers accompanied by temporary gusty/squally wind is likely to occur at most places over Dhaka, Khulna, Barishal and Chattogram divisions and at many places over Rajshahi, Rangpur, Mymensingh & Sylhet divisions with moderately heavy to heavy falls at places over the country.

Scenario	Impact	Planned adjustment
Worst Scenario	In case another spell of severe flood occurs during the appeal timeframe and affect the same geographical areas, there will be a need to provide emergency assistance. As a consequence, overall operation will be hampered and delayed in terms providing on-going emergency assistance among the targeted beneficiaries.	This appeal has a provision of anticipated assistance, which will allow IFRC to mobilize resources quickly to support BDRCS. Considering the evolving situation, this appeal can be revised.
Most likely scenario	Flood water start receding, and displaced people return their original living place. Due to damage of their livelihood, house, crops land etc, there will be emergency needs in terms of food, drinking water, medical assistance etc. At the same time, the recovery needs will be highlighted.	This appeal will address the immediate need of the most vulnerable flood affected families in terms of emergency food, WASH, Shelter and Health. Based on the available funding, first immediate needs will be address for the targeted beneficiaries. Based on detail recovery assessment, BDRCS will provide recovery assistance to restore livelihood, damage house, WASH facilities within the appeal timeframe.

### Operation Risk Assessment

The overall security situation in the country is normal and currently there is no major threat which may directly impede the implementation of the planned activities. However, to ensure safety and security of all people involved, adequate

measures will be put in place. This includes, but is not limited to, staff tracking (e.g. via phone or Short Messages Service - SMS), pre-deployment security/safety briefs, situation monitoring, regular or ad hoc security/safety updates, contingency plans, and the completion of the respective IFRC e-learning courses (i.e. Personal Security, Security Management, Volunteer Security). Since mobile phone network is functioning as well as internet through mobile network, a WhatsApp group will be maintained for quick communication and regular update between the Dhaka and field teams. As a back-up, a log on all field movement will be created and updated daily by the administration and security unit, which can be referred to in the event there are network disruptions.

Proper visibility will be maintained by the field teams while working in the field. All the vehicles will be accommodated with the proper safety equipment like life jackets and first aid kits. Difficulty in road access to the affected communities has been reported in some of the flood affected districts. However, the IFRC security team will be continuously monitoring the situation and advise the teams accordingly. The security team will be keeping close coordination with the UNDSS, ICRC Security team in Dhaka as well as with the BDRCS units and local administrations in the operational areas. However, a security assessment at the flood affected operational areas will be carried out soon.

## B. Operational strategy

### Overall operational objective

The overall objective of the operation is for BDRCS to meet the immediate, medium-term (early recovery) and recovery needs of 30,000 households (150,000 people) affected by the floods in the 15 most impacted districts of Bangladesh - through the provision of emergency food, safe drinking water, emergency shelter and hygiene items, health support, seeds and livelihood support, and DRR. Most of the interventions will be cash-based in order to reach the most vulnerable people in a timely and dignified manner. Considering the rapid spread of dengue cases during this monsoon, in addition to the 15 flood affected districts, Dhaka is also being targeted particularly for health interventions and other preparedness for effective response related activities including awareness campaign, volunteer mobilisation, community cleaning initiatives, Psychosocial Support (PSS).

### Proposed strategy

The operation strategy is:

- Meeting immediate, medium-term and recovery needs of communities affected by the current flooding.
- Anticipating and responding to additional humanitarian needs during the remainder of the 2019 monsoon season.
- To strengthen the capacity of BDCRS in PER and NSD.

### Immediate assistance

The immediate need of food, safe drinking water, medical assistance, emergency shelter, sanitation and hygiene needs of the 20,000 flood affected families, will be met in the first three months through the provisions of emergency food, safe drinking water, emergency shelter and hygiene items as well as emergency health support.

### Anticipated assistance

Through this appeal, BDRCS will be well positioned to take early action in response to future floods with the provision of emergency food, shelter, WASH and health services for 10,000 families.

### Recovery assistance

This appeal also plans to support 2,000 most vulnerable families and communities to recover from the effects of the recent floods. This recovery assistance will begin immediately after the completion of planned activities of the immediate assistance. The recovery interventions will be designed, planned and implemented in an integrated manner between all concerned sectors. The recovery assistance will support affected families in terms of restoring sanitation and water facilities, reconstruction of damaged shelters and improving livelihoods and food security. The coping mechanism for future floods will be addressed through Disaster Risk Reduction (DRR) activities planned under this appeal.

Most of the assistance will use cash-based interventions in order to reach the most vulnerable people in a timely and dignified manner. Designing of all these interventions will be done considering the learnings from the previous projects and operations including the 2017 floods operation such as engaging the communities from the very beginning, providing cash support through a financial service provider like the post office, planning the exit strategy from the beginning and best practices such as participatory approach by engaging the communities and local authorities. Following the previous audit and evaluations, the cash-based interventions have been made more structured, robust and strengthened. The Cash SOP has been drafted and approved by the BDRCS Governing Board and will be followed thoroughly for all cash-based interventions including activities under this EA. Furthermore, in-country practical emergency cash (PECT) trained staff, technical officers from BDRCS and IFRC and cash trained NDRT members will monitor the cash interventions.

Additionally, some partners have expressed willingness to support human resources, if required, for cash monitoring and impact study/analysis.

Beneficiary selection is also key in the operation. BDRCS, as always, has a robust beneficiary selection and validation process. The beneficiary data in this EA too will be managed by BDRCS and IFRC using Open Data Kit (ODK). ODK is an open source Android app that replaces paper forms used in survey-based data gathering. It supports a wide range of question and answer types and is designed to work well without network connectivity. The household assessment form is designed in consultation with all sectoral stakeholders, including IT, PMER, CEA and PGI. BDRCS in this operation will engage a data management team based in the headquarter led by the ICT unit of BDRCS. In order to facilitate exit strategy planning, close consideration will be given to the design of the DRR component under the operation, to ensure, where possible, that links are made between DRR interventions under the operation to the ongoing community resilience programming of the national society.

### **Communication**

Maintaining a steady flow of information and communication between operations in the field and major stakeholders including media and general public, Movement Partners and donors is crucial for any operation. The IFRC communications team, supported by the Regional office, works closely with BDRCS communications team to ensure that the information flow is steady, effective and timely. Since the onset of the crisis, the team has been gathering communication contents such as photos and videos on the disaster situation and BDRCS activities on the ground and sharing them with various national and international media, and partners. BDRCS and IFRC will share engaging communications content on their social media channels and websites.

IFRC communications teams in country and regionally will provide support to BDRCS communications efforts as needed, including in planning and media monitoring, media relations, content development and capacity-building. A communication surge capacity from the IFRC Regional Office may be deployed during the operation.

Throughout the operation, a regular flow of information will also be maintained between the community people, respective BDRCS district units and departments at NHQ to maintain transparency and address the immediate needs of the most vulnerable people.

BDRCS will also take initiatives to document this operation. Best practices will be captured, and efforts will be made to record case studies as the operation progresses.

### **Community Engagement and Accountability**

Community Engagement and Accountability (CEA) will be ensured through the provision of relevant information to disaster-affected communities and creating accessible feedback mechanisms. The goal of this is to put the affected communities at the centre of the operation and design the programme and select the beneficiaries according to their needs. BDRCS and IFRC will maintain coordination with the 'Communication with Communities' (CWC) working group under the HCTT. Prior to relief distributions, community people will be made aware of the distribution packages, services, and the Fundamental Principles of the Red Cross Red Crescent Movement. Community information boards and information desks will be arranged in the operation to ensure communities receive relevant messages regarding relief efforts and services. To ensure that the communities can raise valid concerns and the operation may receive feedback about the quality of aid, a Complaints and Response Mechanism (CRM) will be in place – this includes setting up a feedback desk, information booth, complaints box and hotline number. BDRCS already has their hotline number (+88 01811458524) which is used throughout the country. Red Crescent Youth and staff working on the ground will be equipped with FAQ to respond the queries from the communities and stakeholders. Protection risks awareness flyers and other IEC materials looking at the differentiated needs and risks of the affected communities will be developed and distributed based on the identified needs. Specific activities around CEA will be integrated within all sectors across shelter, livelihood, water and sanitation, protection, gender and inclusion and others. This can better inform decisions as programming moves into the recovery stage. A strong CEA component is necessary to make sure affected people are at the centre of the recovery interventions, with BDRCS helping them self-recover from the disaster and it will also help to ensure proper integration among all sectors.

The relief operation will maintain RCRC visibility in the field through appropriate brandings such as banners, etc. and BDRCS and IFRC vests to enhance awareness about the role of the NS and IFRC in the operation.

### **Logistics and Supply Chain**

Logistics services aim to effectively manage the supply chain, including local procurement, hiring agent for customs clearing and forwarding, fleet support, storage at BDRCS warehouses (NHQ in Dhaka, depot based at Chittagong and other district level warehouses) in accordance with the operation's requirements and aligned to IFRC's logistics standards, processes and procedures.

In terms of cash-based intervention, the IFRC in Bangladesh already have an established service agreement with the Bangladesh Post Office (BPO), for the year of 2019 with a possible of extension for another year (2020). However, if there is requirement to engage further third-party financial institutions or service provider, IFRC in country logistics and procurement unit, with the support of Operational Logistics, Procurement and Supply Chain Management Department (OLPSCM), Asia Pacific Regional Office in Kuala Lumpur, will process the service procurement in accordance with the Cash team by following the IFRC standard procurement processes.

In line with Bangladesh Government instructions to source items locally, where possible, emergency food supplies and NFIs, such as hygiene items, buckets, shelter toolkits and water purification tablets, if needed for this operation, will be procured locally in accordance with IFRC procurement procedures and processes. Other items that are not available locally, such as tarpaulins and jerry cans as well as relief items utilized from the BDRCS disaster preparedness stocks, will be replenished through the IFRC AP OLPSCM. IFRC country office logistics and procurement units along with the BDRCS colleague will maintain the required coordination with the National Logistics Cluster for further information as needed.

BDRCS have their own transport capacity for transporting relief items to the operations areas. However, if needed, IFRC will facilitate on renting additional trucks to be able to transport relief items in accordance with the operation's requirements in compliance with IFRC's logistics standards, processes and procedures. For fleet support, IFRC country office will accommodate the requirement within the existing capacity but depending on the requirements, rental vehicles may be hired to support the Operation.

### **Human resources**

BDRCS has been utilizing existing staff, NDRT, NDWRT and volunteers for the response operation. BDRCS is planning to deploy more NDRT and NDWRT members. The district branches have deployed youth volunteers and members of the executive committees for warning message dissemination, evacuation, first aid, rescue, dry food, cooked food and hygiene parcels distribution. Three regional disaster response team (RDRT) members particularly for IM and PGI will be mobilized to support BDRCS in relief and reporting activities as a primary task for a period of one month. To complete the EA operation within the timeline, BDRCS will recruit project staff and engage community volunteers as required and appropriate. Staff and volunteers will be sensitised on gender, age, disability specific needs and on how to communicate respectfully with persons with physical, sensory and intellectual disabilities, persons with mental health disabilities, and older people.

Existing IFRC staff are assisting BDRCS in terms of coordination, information management, need assessment. In addition, IFRC staff will provide technical support for beneficiary selection, cash-based intervention and operational management. With the support of IFRC APRO, additional technical surge capacities may be engaged when there is a need. Furthermore, as some partners have expressed willingness to support in cash-based intervention monitoring and impact study and analysis, such needs will be evaluated carefully and agreed with the partners on a case by case basis.

### **Humanitarian diplomacy/advocacy**

The BDRCS has a critical role to play to influence decision-making in favour of the needs of the most vulnerable. In fulfilling its auxiliary role in disaster management, BDRCS acts as an important channel between authorities and communities, ensuring that the needs of vulnerable people are met. Over the past few years, BDRCS, with support from IFRC has been focusing its Humanitarian Diplomacy (HD) efforts on disaster law and enactment of the Red Crescent law. In 2015, BDRCS convened a National Conference in collaboration with Ministry of Disaster Management and Relief on the role of Red Crescent in Disaster Management in Bangladesh for further collaborative approaches between BDRCS, IFRC and the government. In addition to this, a collaborative research effort on international disaster response law is underway. Recently BDRCS organized a one-day workshop on 25 March 2019 on HD to sketch the HD and advocacy vision for BDRCS and chalk out its HD plan of action (PoA). BDRCS, due to its close coordination and engagement with the government, has been vividly enlisted in the Government's Standing Order on Disaster (SOD) and its role in disaster response is clearly outlined and highlighted in the SOD.

## C. Detailed Operational Plan



### Shelter

**People targeted: 35,000 (7,000 households)**

Male: 17,515

Female: 17,485

**Requirements (CHF): 1,816,000**

**Needs analysis:** It is already evident that, due to limited access to community shelters, many of the affected population have moved to higher lands such as embankments and roads where they are living in the open area with minimum cover. Some of them have now started returning to their homes but most of houses are filled with thick mud and debris that the dwellers are finding difficult to clear. According to the findings of the rapid need assessment, shelter support is one of the most urgent needs. Most of the areas are still inundated and waterlogged. These emergency needs will be addressed during the immediate phase and further support may be considered based on the detail recovery assessment.

While water level in most of the rivers is still high, the excessive water flow has already caused riverbank erosion in least in three districts. There is a further risk of river erosion when water levels recede causing damage to vulnerable houses and possibly causing further displacement in the char and low land areas. 400,000 houses have been fully or partially damaged This may lead to further shelter needs in the affected areas.

Keeping in mind that some of the districts targeted by the current operation were supported with shelter interventions under the 2017 emergency appeal operation, careful consideration will be given during the process of beneficiary selection to whether families that were supported previously, require support under the current operation. Cash distribution and expenditure will be monitored through a data management system where beneficiary's information is readily available for screening.

Through careful monitoring in these communities, special attention will be paid to whether houses that were supported in previous operations were able to withstand the impacts of the current floods or whether these once in 100 years floods set back the gains achieved in the previous operation. In addition, given that efforts to build community capacity to repair and maintain safe shelter through the implementation of Participatory Approach for Safe Shelter Awareness (PASSA) was a key achievement of the previous operation, the ability of families targeted under the previous operation for this support, will be monitored to understand the long-term sustainability of awareness and skill transfer achieved under the previous operation.

### Population to be assisted:

Immediate phase:

- The most affected 5,000 households (25,000 people) will be provided with one tarpaulin and shelter toolkit each as emergency shelter assistance along with proper technical orientation by the trained National Disaster Response Team (NDRT) members. This is based on Shelter Cluster recommendation in Bangladesh that one tarpaulin per family is planned.

Anticipated phase:

- 2,000 households will be reached with tarpaulin and shelter toolkits in the anticipated phase along with proper technical orientation by the trained National Disaster

Response Team (NDRT) members. This is just a provision for the anticipated floods in coming months.

Long-term phase:

- 2,000 most affected households will receive conditional cash and in-kind support along with technical assistance as shelter recovery assistance. A detail recovery assessment will be carried out.

<b>A brief summary of interventions and delivery mechanism (detail activities, expected results and implementation timeline are given in a section below)</b>				
<b>What</b> (interventions/services)	<b>How many/much</b> (quantity/number)	<b>Who</b> (targeted people)	<b>Where</b> (location/targeted area)	<b>How</b> (delivery method/modality)
<b>Immediate phase:</b>				
<b>Emergency shelter assistance</b>	1 tarpaulin <sup>8</sup> along with 1 set of shelter toolkits.	5,000 flood affected families who lost their houses and currently displaced.	Total area covered – 5 districts	The targeted families will be provided tarpaulins and shelter toolkits as emergency shelter assistance along with proper technical orientation by the trained National Disaster Response Team (NDRT) members.
<b>Anticipated phase:</b>				
<b>Emergency shelter assistance</b>	1 tarpaulin along with 1 set of shelter toolkits.	2,000 floods affected families	A provision for the anticipated floods in coming months.	The targeted families will be provided tarpaulins and shelter toolkits as emergency shelter assistance along with proper technical orientation by the trained National Disaster Response Team (NDRT) members.
<b>Long-term phase:</b>				
<b>Conditional Cash Grant (CCG) and in-kind support along with technical assistance to reconstruct the damaged houses</b>	Shelter recovery assistance will be decided after the detail recovery assessment.	2,000 most affected families.	Total area covered – 2 most affected districts	The targeted families will receive conditional cash and in-kind support based on the recovery assessment. During the recovery phase, BDRCS will implement PASSA tools with support of the community people and organize technical orientation for the beneficiaries. Beneficiaries will be selected based on prior set criteria and detail household level survey. The conditional cash grant will be provided in installments based on the work progress. The trained volunteers and technical staff will monitor regularly shelter activities.
<b>Experience and lessons learned:</b>	Several floods response and recovery operations were implemented in the recent past as well namely 2017 floods, Shariatpur river erosion and displacement that have been successfully completed. It was evident that tarpaulin and shelter toolkit played an important role in terms of building makeshift shelters during the emergency. During the recovery phase, community participation through PASSA tools had been appreciated in last 2017 flood operation.			
<b>Training/assessment/evaluation planed:</b>	BDRCS will organize basic orientation for its volunteers, NDRT members and staffs on the use of tarpaulin and shelter toolkits. These trained volunteers will orient the targeted beneficiaries similarly. A detail recovery assessment will be conducted through household survey and focus group discussions. BDRCS will also organize a PASSA ToT for volunteers and staffs who will facilitate the PASSA in the targeted communities. In addition, training will be organized for the local masons and carpenters on improve construction techniques. Post distribution monitoring will be conducted regularly and there will be a final evaluation of the entire operation.			

<sup>8</sup> One tarpaulin per family is planned based on Bangladesh shelter cluster recommendation.





## Livelihoods and basic needs

**People targeted: 50,000 (10,000 households)**

Male: 50,044

Female: 49,956

**Requirements (CHF): 1,803,000**

**Needs analysis:** Due to displacement of people and loss of food stocks to the flood waters, there is an urgent need for food assistance. While short-term food security is the most imminent problem; there will also be a significant impact on long-term food security due to impacts on crops and livelihoods. An assessment report from UN Food and Agriculture Organization (FAO) indicates that severe losses to livestock and fisheries in the northern areas, resulting from the floods, are likely to impact long-term food security in the region. Limited work opportunities will reduce purchasing capacity of the vulnerable families, which in turn, will result in a prolonged lean season exacerbating further food insecurity and the nutritional status of families. This is also in line with FAO assessment data which indicates that many people have already sold their livestock below market price to buy necessary items for their families as their normal income sources have been disrupted, indicating that families are already employing negative coping strategies to cope with the impacts. The elderly, female headed families, pregnant and lactating women and those already relying on food aid are the most vulnerable in terms of food security, in relief as well as in the recovery.

### Population to be assisted:

Immediate assistance:

- 10,000 flood affected families will be provided emergency dry food package<sup>9</sup> (families who are currently displaced and do not have cooking facilities).
- 10,000 flood affected families will be provided food package<sup>10</sup> for two weeks and priority will be given to those who received dry food package earlier.
- 7,000 most affected families will be provided MPCG through financial service provider to cover the emergency need of one month (targeting the most vulnerable families receiving food assistance)
- 7,000 most affected families (same families, who will receive the MPCG) will be provided vegetable seeds.

Anticipated phase:

- 10,000 households will be provided food packages for two weeks. This is just a provision for the anticipated floods in coming months.
- Among these 5,000 households will also receive MPCG to meet the immediate need for one month.

Long-term assistance:

- 2,000 most affected households will be assisted with conditional cash grant to restore livelihoods; this is based on 10 per cent of the total caseload, this will be selected based on the details from household level recovery assessment.

**Summary of interventions and delivery mechanism (detail activities, expected results and implementation timeline are given in a section below)**

What (interventions/services)	How many/much (quantity/number)	Who (targeted people)	Where (location/targeted area)	How (delivery method/modality)
----------------------------------	------------------------------------	--------------------------	-----------------------------------	-----------------------------------

<sup>9</sup> Dry food package consists of 5kg of flatten rice and 2kg of sugar/molasses.

<sup>10</sup> Food package consists of 15kg of rice, 2kg of daal (pulses), 1 litre of oil, 1kg of sugar, 1 kg of salt, 1 kg of Semolina.

<b>Immediate phase:</b>				
<b>Emergency dry food package</b>	10,000 packages	10,000 floods affected families who are currently displaced and do not have cooking facilities	Total area covered – 15 districts	Dry food package will be readied as per the set standards of the BDRCS and distributed to the targeted people by mobilizing RC Youths, volunteers and NDRT members.
<b>Regular food package in-kind for 2 weeks for a family</b>	10,000 packages	10,000 floods affected families who are currently displaced or returned to their homes	Total area covered – 15 districts	Regular food package will be readied as per the set standards of the sphere and distributed to the targeted people by mobilizing RC Youths, volunteers and NDRT members.
<b>Multi-purpose Cash Grant (MPCG)</b>	BDT 4,500 (CHF 52)	7,000 most affected families to meet their emergency need for 1 month	Total area covered – 5 districts	To meet the immediate needs MPCG will be distributed to targeted families through an external service provider. IFRC has already signed an agreement with the Bangladesh Post Office (BPO), a government agency. BPO has the largest network and is present all over the country. It has been delivering cash in a timely and secured manner. IFRC and other RCRC partners have already used them this year, and the system has worked well.
<b>Anticipated phase:</b>				
<b>Regular food package, in-kind for 2 weeks for a family</b>	10,000 packages	10,000 floods affected families	This is just a provision for the anticipated floods in coming months.	Regular food package will be readied locally as per the set standards of the BDRCS and distributed to the targeted people by mobilizing RC Youths, volunteers and NDRT members.
<b>Multipurpose Cash Grant (MPCG)</b>	BDT 4,500 (CHF 52)	10,000 floods affected families	This is just a provision for the anticipated floods in coming months.	MPCG will be distributed to the targeted families through the external service provider. IFRC has already signed an agreement with the Bangladesh Post Office (BPO).
<b>Long-term phase:</b>				
Household livelihoods security is enhanced through income generating activities, food production, increased productivity and post-harvest management	Exact amount will be decided after the detail recovery assessment of the affected communities.	2,000 most affected families to improve their livelihood condition. This number is based on 10% of the caseload of the total families targeted during the emergency phase. Beneficiary will be selected based on prior set criteria and detail household level survey.	Total area covered – 2 most affected districts considering the upcoming recovery assessment	CCG will be provided to the targeted families based on their individual proposals, and families shall use the given grant only for approved schemes/projects. The actual distribution of the CCG will be done through the individual bank account of the selected beneficiaries. This will also support the local economy and develop a habit saving among beneficiaries. Members of the community development committee and the volunteers will be involved in monitoring and supporting implementation of the approved proposals.
<b>Experience and lessons learned:</b>	BDRCS has been responding to different kinds of natural disasters and man-made crises such as floods, cyclone, cold waves, fire, population movement and displacement, industrial accidents since its establishment. Several flood response and recovery operations have been implemented in the recent past namely, 2017 floods, Moulavi Bazar floods, Shariatpur river erosion and displacement that have all been			

successfully completed. Some difficulty was faced in the 2017 floods operation and the operation was paused some time to address those issues and weakness. However, required corrective actions were taken and the flood operations resumed after five months and was eventually completed in April 2019. Several learnings have come from these past operations that affirm that the cash transfer is the best means of reaching affected people in a short time while giving them due dignity and flexibility to manage their basic needs. However, to ensure an effective and timely delivery of the allocated cash, there needs a robust delivery mechanism, careful beneficiary selection, data management, analysis and monitoring to prevent misuse and wrong allocation of the humanitarian resources. To address this, BDRCS/IFRC has negotiated with the Bangladesh Post Office (BPO) to utilize its service to distribute the cash in time of disaster. The BPO, a government agency, has the widest network in the country and can distribute cash to the targeted population in the shortest possible time. After signing an agreement last year, BDRCS/IFRC has already tested the BPO service in 3 operations that worked well, and entire operations completed in time without any problem. Hence this floods operation also will use the BPO to distribute multipurpose cash grant.

For the recovery phase, however, the banking system will be used for transferring the allocated money directly to the beneficiary bank accounts. Individual account will be opened for all beneficiaries. BDRCS/IFRC have successfully applied this method in their previous operations. Likewise, beneficiary data management has been improved last year by bringing two RDRT IM experts and the same enhanced system will be used in this operation too. On top of that, capacity of the BDRCS staff has been strengthened through various in country and international trainings on the assessment, cash-based programming and data management for example, at least five staffs have attended an advance data analysis and information management trainings in Indonesia, Singapore, New Zealand and Bangladesh; more than 10 staffs have attended the advance training on cash (PECT) in Geneva, Malaysia, Mongolia, Bulgaria and Turkey; around 70 staffs and volunteers have completed the level-2 cash-based intervention training in Bangladesh. Additionally, almost 200 volunteers have completed the level-1 training on the cash-based intervention. The much-awaited Standard Operating Procedures (SOP) for the cash-based programming has been finalized and approved by the BDRCS governing board. These all capacity building initiatives and the SOP have greatly enhanced the cash readiness and ability to effectively implement cash-based interventions of the BDRCS. That is why this floods operation as well is using the cash-based intervention as far as practical. Apart from strengthening the CBI, BDRCS is improving other crosscutting services like PGI, CEA, PSS, CRM, etc. in order to reach the most vulnerable people in a most appropriate and effective way.

<b>Training/assessment/evaluation planed:</b>	A detailed recovery assessment will be conducted. Cash feasibility study and market assessment will be conducted before distributing cash grant to the people. A fraud and corruption prevention session will be incorporated along with basic cash orientation in the branch level. Some specific trainings will be organized for all targeted beneficiaries of the conditional cash grant. These training will add value to strengthen the livelihoods activities. A post distribution monitoring will be conducted immediately after the emergency phase.
<b>Current implementation capacity, technical surge need, specific system/human resources required:</b>	BDRCS/IFRC have an adequate system of staff and volunteers to distribute food packages and cash grant to the affected people. Several hundred volunteers and trained disaster response team (NDRT, NDWRT) have already been mobilized in various districts. IFRC and partner national societies are also ready to provide surge capacity as and when needed. There are number of registered seeds and saplings testing and delivery agencies that will ensure the quality and timely delivery of the proposed seeds and saplings to the targeted beneficiaries.

In summary, BDRCS will provide dry foods among the flood affected households who are inundated and unable to cook. Later once flood water recedes these same affected people will be targeted to provide normal food package for two weeks. However, based on changes in terms of the needs of targeted households, BDRCS may target additional new households. BDRCS will also prioritize the same families for multipurpose cash grant to meet needs of the most vulnerable 7,000 households for further a month. At this point seeds will also be distributed to accompany cash grants to allow households to start growing their own vegetable gardens. Immediately after MPCG assistance, BDRCS will start providing livelihood recovery assistance based on available funding. To help the beneficiaries to recover from the impacts of the floods, BDRCS will conduct a detailed assessment on livelihoods. After a Livelihoods needs and capacity assets, BDRCS will identify the type of livelihoods that need to be supported. To support the recovery of agricultural activities, multi-purpose cash assistance will aim to be coordinated with seeds distribution as a measure of seed protection.

**Programme standards/benchmarks:** Emergency food package is provided considering the BDRCS and Food security cluster recommendation. Multipurpose cash grant package is based on HCTT led national cash working group recommendation. Each of affected families will receive BDT 4,500 (CHF 52).

P&B Output Code	Outcome 1: Communities, especially in disaster and crisis affected areas, restore and strengthen their livelihoods	# of households that have enough food, cash or income to meet their needs (Target: 10,000)																		
	Output 1.1: Basic needs assistance for livelihoods security including food is provided to the most affected communities	# of households reached with dry food assistance (Target: 10,000); # of households reached with food package for two weeks (Target: 10,000);																		
	Activities planned	Month	1	2	3	4	5	6	7	8	9	10	11	12	13	14	15	16	17	18
AP008	Immediate phase: Distribution of emergency dry food among 10,000 families		x	x	x															
AP008	Immediate phase: Distribution of food package among 10,000 families		x	x	x															
AP008	Anticipated phase: Distribution of food package among additional 10,000 families																			
P&B Output Code	Output 1.2: Household livelihoods security is enhanced through food production, income generating activities and post-harvest management	# of households supported to increase/improve household food production (Target: 2,000)																		
	Activities planned	Month	1	2	3	4	5	6	7	8	9	10	11	12	13	14	15	16	17	18
AP010	Conduct a needs and capacity livelihoods assessment to understand the impacts of the disaster on economic activities and response options to respond to needs (all activities below are indicative and to be conducted based on identified needs)					x	x	x												
AP010	Support model livelihood initiatives						x	x	x	x										
AP010	Livelihood training sessions for beneficiaries.					x	x	x	x	x	x									
AP010	Support affected community to restore their productive assets to recover their income sources (through cash transfers and capacity building)							x	x	x	x	x	x	x	x					
AP010	Support recovery of small-scale agricultural production through seeds distribution to affected families							x	x	x	x	x	x	x	x					
AP010	Monitoring of livelihood recovery activities							x	x	x	x	x	x	x	x	x	x	x	x	X
P&B Output Code	Output 1.3: Households are provided with unconditional/multipurpose cash grants to address their basic needs	# of households reached with multipurpose cash (Target: 7,000)																		
	Activities planned	Month	1	2	3	4	5	6	7	8	9	10	11	12	13	14	15	16	17	18
AP081	Cash Feasibility study		x	x																
AP081	Immediate phase: Provide MPCG among 7,000 families			x	x	x														
AP081	Anticipated phase: provide MPCG along with seeds among additional 5,000 families																			



## Health

People targeted: 25,000 (5,000 households)

Male: 12,515

Female: 12,485

Requirements (CHF): 160,000

**Needs analysis:** With many displaced families living in the open or with family in crowded conditions without access, in many cases to safe drinking water or adequate sanitation facilities, it is anticipated that waterborne and vector borne diseases are likely to continue. This will also exacerbate any pre-disaster health and nutrition issues. As a result of the floods access to public health services is now severely limited in the flood affected districts due to damages to medical facilities and roads. In addition to that it is reported that mother and child health (MCH) care centers of BDRCS are also affected and in need of repairing and medical equipment's to ensure proper health service to the flood affected people. Currently BDRCS owned 56 MCH centres and 9 of them are located in flood affected areas. BDRCS has planned to conduct detail structural assessment of affected MCH centers.

According the last report of Directorate General of Health Services (DGHS) of Bangladesh (published on 31 Aug 2019); total 51,734 dengue patients admitted in in August. During August, number of patients had been increased during first and second week, then it started declining from 3<sup>rd</sup> week of August. In addition to the government, WHO and other agencies response, there is still need to aware mass people about dengue and community clean up s to prevent buildup of stagnant water as part of the community prevention activities. It is also identified that the distress people need psychosocial support to overcome the situation.

#### Population to be assisted:

Immediate phase:

- 20,000 people will be reached through mobile medical teams, first aid, PSS services and health awareness campaign (for Dengue).

Anticipated phase:

- 5,000 people will be reached through mobile medical team, first aid and PSS services.

Long-term phase:

- Another 10,000 people will be reached through the Community Based Health and First Aid (CBHFA) activities and the service of MCH centers of BDRCS.

**A brief summary of interventions and delivery mechanism** (detail activities, expected results and implementation timeline are given in a section below)

What (interventions/services)	How many/much (quantity/number)	Who (targeted people)	Where (location/targeted area)	How (delivery method/modality)
<b>Immediate phase:</b>				
Emergency health assistance	5 medical team	10,000 people	Total area covered – 5 districts	Each of these medical teams will comprise one doctor, one paramedic and two trained volunteers. These mobile medical teams will provide medical assistance in terms of providing free medical consultation, basic medicine and referring to nearest hospital where required. In addition, BDRCS trained volunteers will also worked with government medical teams during the emergency period.
First aid and PSS service			Total area covered – 15 districts	The trained volunteers of respective targeted districts will provide first aid assistance. Later first aid box will be replenished.
Awareness on epidemic disease control for Dengue and			Total area covered – 15 districts plus	Considering the current dengue outbreak situation BDRCS will mobilize volunteers and staffs for dengue awareness campaign. Campaigns include distribution of leaflets, awareness sessions

preventive measures including community cleanings, etc.		Dhaka where people visit for treatment.	in educational institutions and cleaning activities. Unit volunteers will be deployed with necessary materials. Each unit will coordinate with local authorities.
<b>Anticipated phase:</b>			
<b>Emergency health assistance</b>	3 medical team	5,000 people	A provision for the anticipated floods in coming months
			Each of these medical teams will comprise one doctor, one paramedic and two trained volunteers. These mobile medical teams will provide medical assistance in terms of providing free medical consultation, basic medicine and referring to nearest hospital where required. In addition, BDRCS trained volunteers will also work with government medical teams during the emergency period.
<b>Long-term phase:</b>			
Community Based Health and First Aid (eCBHFA)	4 communities	10,000 people	Total area covered – 2 districts
Provide medical equipment, training and <b>renovation of flood affected MCH centers</b>	4 MCH center		In consultation with communities, CBHFA training will be provided to a group of community volunteers along with necessary equipment.
			BDRCS owned 56 MCH centres and 9 of them are located in flood affected areas. Under this appeal BDRCS is planning to provide labor table, midwife kits and other basic medical equipment to its MCH centres. A midwives training will be conducted by BDRCS health department with the support of BDRCS and Government nursing training institute. The training will be conducted for three days and around 30 midwives will be trained. With this appeal, BDRCS has planned to renovate its MCH centre based on the detail structural assessment.
<b>Experience and lessons learned:</b>	Based on learning from previous operation, this appeal allocated more funds for mobile medical teams.		
<b>Training/assessment/evaluation planed:</b>	To train new volunteers and staffs, BDRCS will organize training on first aid, PSS and ECV. In addition to that midwives of MCH center will be trained on		
<b>Current implementation capacity, technical surge need, specific system/human resources required:</b>	BDRCS will mobilize mobile medical team members from its existing roster and medicine from disaster preparedness stock. BDRCS also have first aid trained volunteers in each flood districts, who has been providing service from the beginning of flood. With existing human resource of BDRCS and IFRC is enough to perform the health activities mentioned in EA. As BDRCS has several specialized hospitals and medical centers, they can quickly mobilize doctors and health professionals when there is an emergency. That is why this mobilizing medical team quickly has been possible and effective too.		

**Programme standards/benchmarks:** Health assistance through mobile medical team, first aid and PSS as well as public awareness campaigns will be provided following BDRCS standard practice.

<b>P&amp;B Output Code</b>	<b>Outcome 1: Vulnerable people's health and dignity are improved through increased access to appropriate health services.</b>	<i># of people reached with health assistance (Target: 25,000)</i>
	<b>Output 1.1: Communities are provided by NS with services to identify and reduce health risks</b>	<i># of people reached with emergency health assistance (Target: 15,000)</i>
		<i># of people reached with community-based epidemic prevention and control activities (Target: n/a)</i>

	Activities planned	Month	# of people reached with longer-term Community Based Health and First Aid (eCBHFA) services (Target: 10,000)																	
			1	2	3	4	5	6	7	8	9	10	11	12	13	14	15	16	17	18
AP005	Deployment of mobile medical teams.		x	x	x	x														
AP005	Provide first aid service to the affected people.		x	x	x	x														
AP005	Provide Psychosocial support to affected people		x	x	x	x														
AP005	Awareness on epidemic disease control for Dengue and preventive measures		x	x	x	x														
AP005	Provide orientation and training on first aid, PSS, ECV for volunteers		x	x	x	x														
AP005	Provide medical equipment for MCH centers along with midwives training.								x	x	x	x	x	x	x	x	x	x	x	
AP005	Renovation of flood affected MCH centers								x	x	x	x	x	x	x	x	x	x	x	
AP005	eCBHFA services in affected communities								x	x	x	x	x	x	x	x	x	x	x	



## Water, sanitation and hygiene

**People targeted: 95,000**

Male: 47,542

Female: 47,458

**Requirements (CHF): 717,250**

**Needs Analysis:** Drinking water sources have been contaminated by flood waters and according to the assessment information, around 73,000 tube wells are damaged. This is forcing the affected population to seek alternative water source. Many people are drinking flood water by boiling and trying to consume less. Shortage of safe drinking water is therefore a pressing concern and one of the priorities needs along with sanitation. Due to overcrowding in shelters and temporary accommodation arrangements there is high concern regarding inadequate access to sanitation and hygiene facilities. The rapid assessment found that many people are using temporary latrines which are only covered with jute bags with very poor sanitation conditions. People who are still on the roadside or embankment do not have adequate sanitation facilities; a single latrine is shared by many families. The interventions will be targeting people who are still living in temporary shelters during emergency phase. In addition to that the worst affected families will be considered who lost their water and sanitation facilities.

In terms of better targeting and good impact of the sanitation support, BDRCS however may focus on only two to three priority districts in consultation with government and implementing agencies.

### Population to be assisted:

Immediate phase:

- Provide safe drinking water to 35,000 flood affected people through mobilizing 8 water purification units and disinfecting 200 water points.
- Construction of 50 temporary latrines for community use in 2 priority districts in consultation with other agencies and government.

- Provision of 5,000 hygiene parcels to 5,000 flood affected families.

#### Anticipated phase:

- Additional 10,000 people will be provided safe drinking water and sanitation support, like that of the immediate phase.
- Provide hygiene parcel among 2,000 families.

#### Long-term phase:

- 10,000 people and 10 schools will be reached through implementation of PHAST and CHAST.
- 2,000 people will be reached through the installation of 20 new water points.
- 2,000 households will be reached through latrines construction.

A brief summary of interventions and delivery mechanism (detail activities, expected results and implementation timeline are given in a section below)				
What (interventions/services)	How many/much (quantity/number)	Who (targeted people)	Where (location/targeted area)	How (delivery method/modality)
<b>Immediate phase:</b>				
<b>Safe drinking water</b>	Mobilization of 8 water purification unit and disinfection of 200 tube well.	35,000 people	Total area covered – 5 districts	BDRCS will reach the targeted people through mobilizing water purification units from the respective flood affected district offices and disinfection of flood affected tube wells. BDRCS will mobilize NDWRT members and volunteers to implement the WASH activities.
<b>Distribution of hygiene parcels along with hygiene promotion.</b>	5,000 set of hygiene parcel	5,000 flood affected families who are currently displaced	Total area covered – 5 districts	3,000 hygiene parcels will be distributed from disaster preparedness stock and remaining 2,000 will be procured locally. Later 3,000 set of hygiene kits will be replenished. Awareness on hygiene practice and menstrual hygiene management (MHM) will be carried out through orientation, providing leaflet and focus group discussions.
<b>Temporary latrine</b>	50 set	5,000 flood affected people who are currently displaced	Total area covered – 2 districts	Temporary latrines will be constructed in two priority districts for communal use with the support of NDWRT members and volunteers. This is an initial target and the two priority districts will be selected in consultation with the government and other agencies.
<b>Anticipated phase:</b>				
<b>Safe drinking water</b>		Additional 10,000 people		During the anticipated phase, water purification units will be mobilized along with jerry cans, and disinfection of water points will be carried out targeting additional 10,000 people.
<b>Distribution of hygiene parcels along with hygiene promotion.</b>	2,000 set of hygiene parcel	2,000 flood affected families		2,000 hygiene parcels will be procured locally. Awareness on hygiene practice and menstrual hygiene management (MHM) will be carried out through orientation, providing leaflet and focus group discussions.
<b>Long-term phase:</b>				
<b>Conditional cash grant for construction of improved latrines, hygiene and cleaning items.</b>	2,000 set	2,000 most flood affected families who lost their latrines	2 districts	In recovery phase, BDRCS will develop the most suitable latrine design in consultation with community and DPHE. During this process BDRCS will construct model latrines to demonstrate and to get feedbacks from local communities. Based on the technical inputs and feedback from community, BDRCS will facilitate technical orientation for

			beneficiaries on owner driven latrine construction. Conditional cash grant will be provided each targeted family to construct improved latrines, hygiene and cleaning items. BDRCS will closely monitor the WASH activities and based on the progress, beneficiaries will receive their cash assistance in installment.
<b>Installation of new tube well</b>	20 set	2 districts	In the recovery intervention areas, BDRCS will conduct a detail technical assessment and based on the findings new improved water points will be installed. BDRCS will install the water points with the technical support of DPHE.
<b>Implementation of PHAST and CHAST</b>	2,000 most flood affected families and 10 schools have been targeted under recovery intervention	2 districts	BDRCS will organize PHAST and CHAST ToT for volunteers and staffs. With the support of these volunteers, BDRCS will implement PHAST in the targeted communities and CHAST in the targeted schools.
<b>Experience and lessons learned:</b>	Mobilization of water purification units was appreciated by community people in previous operation. Based on lessons learned, BDRCS is also planning to disinfect tube wells.		
<b>Training/assessment/evaluation planed:</b>	With this EA, BDRCS will organize ToT on PHAST and CHAST for the volunteers and staffs.		
<b>Current implementation capacity, technical surge need, specific system/human resources required:</b>	During emergency phase, BDRCS has mobilized NDWRT from its existing rosters to perform the emergency WASH activities. Currently BDRCS has more than 80 trained NDWRT members and 3 trained WASH RDRT members. During the recovery phase, BDRCS will mobilize technical staffs as needed.		

**Programme standards/benchmarks:** According to Bangladesh WASH cluster recommendation.

P&B Output Code	Outcome 1: Vulnerable people have increased access to appropriate and sustainable water, sanitation and hygiene services	# of people reached with WASH services (Target: 95,000)																		
		# of people provided with safe water (Target: 35,000)																		
Output 1.1: Communities are provided by NS with improved access to safe water.		# of water points disinfected (Target: 200);																		
Activities planned		Month	1	2	3	4	5	6	7	8	9	10	11	12	13	14	15	16	17	18
AP026	Mobilization of trained NDWRTs and volunteers		x	x	x	x	x	x												
AP026	Mobilization of eight water purification units.		x	x	x	x														
AP026	Disinfection of 200 water points.			x	x	x	x	x												
AP026	Distribution and replenishment of jerry cans.						x	x												
AP026	During the anticipated phase, water purification units will be mobilized along with jerry cans, and disinfection of water points will be carried out targeting additional 5,000 people.																			
AP026	In the long-term phase, after conducting technical assessment, 20 new water points will be installed							x	x	x	x	x	x	x	x	x	x	x		
P&B Output Code	Output 1.2: NS promote positive behavioural change in personal and community hygiene among targeted communities.	# of households provided with a set of essential hygiene items (Target: 5,000)																		
		# of people reached through PHAST and CHAST (Target: 10,000)																		
Activities planned		Month	1	2	3	4	5	6	7	8	9	10	11	12	13	14	15	16	17	18

AP030	Distribution and replenishment of 5,000 hygiene kits	x	x	x	x															
AP030	Developed and printing of IEC materials	x	x	x	x															
AP030	Awareness on hygiene practice and menstrual hygiene management (MHM)	x	x	x	x															
AP030	Implementation of CHAST in the schools (target: 10 schools)					x	x	x	x	x	x	x	x							
AP030	Implementation of PHAST in the communities (target: 2,000 families)					x	x	x	x	x	x	x	x							
<b>P&amp;B Output Code</b>	<b>Output 1.3: NS provide communities with knowledge and best practice to improve sanitation facilities.</b>	<i># of temporary latrines constructed (Target: 50);</i>																		
		<i># of people have access to (temporary) safe latrine facilities (Target: 10,000);</i>																		
		<i># of households provided with conditional cash grant for construction of improved latrines, hygiene and cleaning items (Target: 2,000)</i>																		
	Activities planned	Month	1	2	3	4	5	6	7	8	9	10	11	12	13	14	15	16	17	18
AP030	Construction of 50 temporary latrines in 2 priority districts for communal use. This is an initial target and the two priority districts will be selected in consultation with the government and other agencies.		x	x	x	x														
AP030	In recovery phase, technical orientation will be provided to beneficiaries on latrine construction.						x	x	x											
AP030	Conditional cash grant for construction of improved latrines, hygiene and cleaning items in recovery.						x	x	x	x	x	x	x	x	x	x	x			
AP030	Monitoring of latrine construction		x	x	x	x	x	x	x	x	x	x	x	x	x	x	x	x	x	x



## Protection, Gender and Inclusion

People targeted: 150,000 (30,000 households)

Male: 75,066

Female: 74,944

Requirements (CHF): 101,300

**Needs analysis:** The operation will ensure the promotion and participation of men and women of different age groups through trainings and consultation. An assessment will be conducted to identify specific needs of different groups. Sex, age and disability disaggregated data (SADDD) will be collected and analyzed and will be informing the emergency response. A continuous dialogue among the different stakeholders will be fostered to ensure programmes mainstream DAPS (Dignity, Access, Participation and Safety) approach and Minimum Standard on Protection, Gender and Inclusion, based on the identified needs and priorities of humanitarian imperatives on the ground.

### Population to be assisted:

- 150,000 people will be reached through the PGI activities.

A brief summary of interventions and delivery mechanism (detail activities, expected results and implementation timeline are given in a section below)

What (interventions/services)	How many/much (quantity/number)	Who (targeted people)	Where (location/targeted area)	How (delivery method/modality)
----------------------------------	------------------------------------	--------------------------	-----------------------------------	-----------------------------------

<b>Immediate phase:</b>				
<b>Orientation on the PGI minimum standard and DAPS approach</b>	200 people	BDRCS staff, NDRT, NDWRT members, and volunteers as well as IFRC, PNSs staff	In BDRCS NHQ and in 3 flood affected districts (which will engage staff and volunteers from other districts).	Orientation will be conducted by BDRCS and IFRC PGI officials in the NHQ and in the district level as per the standard package. Following this orientation, people engage in the operation will practice the same in their field works.
<b>Collection and analysis of Sex-Age and Disability-Disaggregated Data (SADDD) to inform the operations and the selection of the beneficiaries</b>	For all 150,000 people	150,000 flood affected people.	Total area covered – 15 districts	Questionnaires on collection of SADDD info already added in household assessment through ODK. Beneficiary selection will be done accordingly, keeping in mind the most vulnerable criteria. SADDD will be followed in recovery phase too. This will be implemented by BDRCS staff, NDRT members and volunteers as well as IFRC, PNSs staff engaged in data collection.
<b>Ensure Community Engagement and Accountability (CEA)</b>	150,000 targeted people.	Communities will be engaged through the BDRCS staff, NDRTs, NDWRTs and volunteers engaged in this operation for all sectors.	Total area covered – 15 districts	Basic orientation will be done for the staff, NDRTs, NDWRTs, volunteers, and a CEA checklist will be provided to the team engaged in the field. Also, beneficiary selection and exclusion criteria, validation of the final list, exist survey, information desk, etc. will be ensured throughout the operation.
<b>Development and dissemination of information, education and communication materials (IEC) on PGI, CEA</b>	150,000 targeted people	150,000 flood affected people.	15 targeted districts	One pocket card on CEA (information on BDRCS hotline number) and PGI (contact info in case of GBV incident) will be developed and disseminated in all 15 districts. Also, in line with sectoral needs, IEC materials will be developed and those will have clear message that all the assistance provided by BDRCS is free of cost and display BDRCS hotline number.
<b>Distribution of dignity kits</b>	3,000 females	3,000 female beneficiaries among the flood affected	In 5 districts – based on the household assessment data	Based on the household assessment information the

		people.		dignity kit (contains bucket with lid, 4 under garments, 4 pcs menstruation kit, 2 pcs soap, 1 kg detergent powder, solar powered torch light) will be provided to most vulnerable families (3,000 females) in 5 districts – considering 10% case load.
<b>Feedback and complaints response mechanism established</b>	150,000 targeted people	150,000 flood affected people	15 targeted districts	Based on the preferences set by the communities' feedback and compliance mechanism will be established throughout the operation.
<b>Provide psychosocial support to children through arranging recreational activities</b>	10 schools	Students in 10 schools in flood affected area	In 2 flood affected districts	Playing equipment (e.g. football, cricket) will be provided in the affected schools to engage the children in the recreational activities besides their daily school routine.
<b>Conduct awareness-raising sessions to prevent violence and negative coping strategies.</b>	5 sessions	75 community people	In 5 most affected districts	Awareness raising through the orientation on GBV, referral pathway, etc. to prevent violence in the communities. To address negative coping strategies awareness raising will be done on early marriage, child labor, etc. These will be done through BDRCS staff, NDRTs, NDWRTs and volunteers engaged in the operation.
<b>Community radio show</b>	20 shows	Through community radio stations	Flood affected 5 districts.	Community radio shows on BDRCS services that will be provided in this operation that will be disseminated among the community using this media and need base subjective issues like agricultural topic on cultivation, sowing seeds, health issues will be covered using expertise from the local Government.
<b>Experience and lessons learned:</b>	Currently BDRCS has its Strategic Plan 2017-2020 which is the key guiding instrument for the Society with a clear vision and mission and besides its four strategic goals, priorities are given to the cross-cutting issues like Gender and Diversity, Community Engagement and Accountability, Staff and Volunteer Safety Security, Child Protection. In the past couple of years BDRCS has completed gender and diversity project, and very recently the child protection policy roll-out project, which will allow BDRCS to emphasize on the Protection, Gender and Inclusion issues in this operation. The trainings and orientation conducted during those projects will allow BDRCS to engage the knowledge in this operation from the very beginning. BDRSC and IFRC country offices are engaged with Gender			





## Disaster Risk Reduction

**People targeted: 25,000 (5,000 households)**

Male: 12,511

Female: 12,488

**Requirements (CHF): 267,500**

**Needs analysis:** The underlying vulnerability and poverty of the people affected by floods, especially in northern districts cannot be underestimated. In many districts, people's lives and their livelihoods have been affected by the flooding.

As Community-based disaster risk reduction (CBDRR) and climate change adaption (CCA) require sustained effort, activities in these areas will be considered to enhance the community capacity to address adverse effects of future floods. Community preparedness and risk reduction measures will be implemented alongside relief and recovery interventions. As part of protecting and restoring community resilience to disasters, community-based disaster risk reduction (CBDRR) activities will be undertaken to identify local risks, vulnerabilities and capacities to strengthen resilience of communities. In total, 25,000 people will be reached through DRR activities in the worst affected districts.

While some of the districts targeted under this operation have received support for DRR activities either through previous operations or through support from BDRCS and PNS in ongoing programming, it is important to note that building resilience requires sustained engagement over several years. It is also important to note that these floods have been exceptional, with flood levels exceeding normal monsoon flooding. Nonetheless, recognizing that this is a valuable opportunity to learn about the sustainability of previous DRR efforts, as part of the overall operational strategy, careful consideration will be given in the targeting of villages under the operation, to identify those who have received existing or previous support provided on DRR initiatives. The identification of these villages will not preclude them from being targeted under the current operation. However, where villages previously targeted are included, careful consideration will be given to this in the establishment of monitoring and evaluating systems under the operation, to ensure that further lessons can be drawn based on how previous efforts in DRR have either supported communities in mitigating loss or whether the current floods have resulted in setbacks against previous achievements.

### Population to be assisted:

- 25,000 people will be reached through DRR activities.

**Programme standards/benchmarks:** BDRCS will form community committee to ensure community participation and to empower the community in decision making. In addition to that BDRCS will provide necessary training to community committee and volunteers on leadership, SR, FA and DRR. All the planned DRR activities have been designed considering the lessons learned from previous operation and best practices in the affected communities.

A brief summary of interventions and delivery mechanism (detail activities, expected results and implementation timeline are given in a section below)				
What (interventions/services)	How many/much (quantity/number)	Who (targeted people)	Where (location/targeted area)	How (delivery method/modality)
Provide seeds and saplings	5,000 families	5,000 families who have space to plant and need of seeds/saplings	2 districts	In consultation with targeted communities, local authorities and relevant government departments; BDRCS will identify the most appropriate saplings and seeds for the beneficiaries. Once saplings and seeds are

				identified, BDRCS will procure these saplings locally. BDRCS will also do necessary test to ensure the quality of saplings and seeds.
Awareness raising sessions on based DRR through street drama and pot songs	4 community	People who live in the recovery targeted communities	2 districts	In consultation with community, BDRCS will organize street drama and pot songs with the support of local artists and local authorities.
DRR activities carried out through inclusive Cash for Work (CfW) activities	4 community	People who are unemployed and have ability to work.	2 districts	The beneficiary will be selected using self-targeting method and the possible scheme for CfW will be selected in consultation with targeted communities, local government and relevant government departments. The daily wage will be based on the recommendation of national cash working group.
Floods hazards mapping, risk analysis and develop floods contingency plan for the communities	4 community	All the community people	2 districts	BDRCS will facilitate flood hazard mapping and risk analysis through implementing VCA tool. BDRCS will mobilize trained staffs and volunteers to facilitate the process to develop the contingency plan.
Installation of early warning system and dissemination	4 community	All the community people	2 districts	BDRCS with the support of FFWC and local authorities, install flood early warning system in strategic location.
Repairing of community flood shelters and community latrines	4 community	People who need to take shelter during flood	2 districts	BDRCS will conduct detail technical assessment to renovate the damage community flood shelters and community latrines with the support of local authorities and relevant government departments.
<b>Experience and lessons learned:</b>	Based on lessons learned from previous similar operations, distribution of appropriate saplings and seeds in recovery phase is appreciated by the community people. It is also evident that all the community people are willingly participated in the street drama and song. CfW initiative is also well accepted as it helps community people in time of disaster.			
<b>Training/assessment/evaluation planed:</b>	All the activities mentioned under DRR will be monitored by the BDRCS' dedicated staffs and volunteers. IFRC will provide support to facilitate the lessons learned workshop and to conduct final evaluation.			
<b>Current implementation capacity, technical surge need, specific system/human resources required:</b>	BDRCS has long experience in procuring saplings and seeds locally. BDRCS will engage technical staffs and deploy NDRT to implement CfW and repairing of community flood shelters and latrines. BDRCS will also engage trained staffs and volunteers from VCA roster to conduct the hazard mapping and risk analysis.			

<b>P&amp;B Output Code</b>	<b>Outcome 1: Communities in high risk areas are prepared for and able to respond to disasters</b>	<i># of people reached through NS programmes for DRR (Target: 25,000)</i>
	<b>Output 1.1: Communities take active steps to strengthen their preparedness for timely and effective response to disasters</b>	<i># of people reached with DRR awareness sessions (Target: 25,000).</i>
		<i># of households provided with saplings (Target: 5,000).</i>

	Activities planned Month	1	2	3	4	5	6	7	8	9	10	11	12	13	14	15	16	17	18
AP001	Training of community committee and disaster response team.				x	x													
AP001	Trained community volunteers on DRR, search and Rescue, First aid etc						x	x	x	x									
AP001	Provide saplings and seeds in recovery phase among 5,000 families										x	x	x						
AP001	Through community consultation develop exit plan for the operation				x	x	x	x	x	x	x	x	x	x	x	x	x	x	x
AP001	Awareness raising sessions on DRR through street drama and pot songs.							x	x	x	x	x	x	x	x	x	x	x	x
AP001	DRR activities carried out through inclusive Cash for Work (CfW) activities							x	x	x	x	x	x	x	x	x	x	x	x
AP001	Floods hazards mapping, risk analysis and develop floods contingency plan for the communities															x	x	x	x
AP001	Installation of early warning system and dissemination									x	x	x	x	x					
AP001	Repairing of community flood shelters and community latrines									x	x	x	x	x	x	x	x	x	x

## Strategies for Implementation

### Strengthening National Society : Requirements (CHF): 787,150

As Bangladesh continuously confronts with floods and other natural disasters almost every year, BDRCS aims to be better prepared and provide early warnings to the vulnerable communities and take early actions before such disasters hit the communities.

P&B Output Code	<b>Outcome 1: National Society capacity building and organizational development objectives are facilitated to ensure that National Societies have the necessary legal, ethical and financial foundations, systems and structures, competences and capacities to plan and perform.</b>	<i>Follow up on the priorities outlined in the Organizational Capacity Assessment Certification (OCAC) assessment and Branch Organizational Capacity Assessment (BOCA) – (Target: Yes)</i>
	<b>Output 1.1: National Societies have the necessary corporate infrastructure and systems in place.</b>	<i>Insurance for volunteers and staffs deployed in the response operations (Target: Yes);</i> <i>Proper orientation to volunteers and staff prior to deployment to response operation on subjects such as PGI, CEA, etc (Target: Yes)</i> <i>Upgrading/modernization of BDRCS response coordination centre at the NHQ (Target: Yes)</i> <i>Exit survey and post distribution monitoring (PDM) conducted (Target: Yes);</i> <i># of people provided ToT training (i.e on livelihoods, PHAST, CHAST, PASSA etc) (Target: n/a);</i> <i># of people trained on NDRT and NDWRT (Target: n/a);</i> <i>Relief stocks (non-food relief items) prepositioned/replenished (Target: Yes)</i> <i>Revision of contingency plan (Target: Yes)</i>







## Budget

### Emergency Appeal - Bangladesh Monsoon Floods 2019

#### Budget

MDRBD022 Bangladesh: Monsoon Floods

Budget Group	Multilateral Response	EA Budget CHF
Shelter - Relief	259,000	259,000
Shelter - Transitional	0	0
Construction - Housing	0	0
Construction - Facilities	0	0
Construction - Materials	0	0
Clothing & Textiles	0	0
Food	475,000	475,000
Seeds & Plants	65,000	65,000
Water, Sanitation & Hygiene	202,250	202,250
Medical & First Aid	160,000	160,000
Teaching Materials	0	0
Ustensils & Tools	0	0
Other Supplies & Services	15,500	15,500
Emergency Response Units	0	0
Cash Disbursements	3,403,000	3,403,000
<b>Total RELIEF ITEMS, CONSTRUCTION AND SUPPLIES</b>	<b>4,579,750</b>	<b>4,579,750</b>
Land & Buildings	0	0
Vehicles	150,000	150,000
Computer & Telecom Equipment	26,000	26,000
Office/Household Furniture & Equipment	0	0
Medical Equipment	0	0
Other Machinery & Equipment	0	0
<b>Total LAND, VEHICLES AND EQUIPMENT</b>	<b>176,000</b>	<b>176,000</b>
Storage, Warehousing	0	0
Distribution & Monitoring	43,000	43,000
Transport & Vehicle Costs	80,100	80,100
Logistics Services	16,500	16,500
<b>Total LOGISTICS, TRANSPORT AND STORAGE</b>	<b>139,600</b>	<b>139,600</b>
International Staff	260,000	260,000
National Staff	387,000	387,000
National Society Staff	268,050	268,050
Volunteers	20,000	20,000
Other Staff Benefits	0	0
<b>Total PERSONNEL</b>	<b>935,050</b>	<b>935,050</b>
Consultants	8,000	8,000
Professional Fees	10,000	10,000
<b>Total CONSULTANTS &amp; PROFESSIONAL FEES</b>	<b>18,000</b>	<b>18,000</b>
Workshops & Training	326,730	326,730

<b>Total WORKSHOP &amp; TRAINING</b>	<b>326,730</b>	<b>326,730</b>
Travel	75,500	75,500
Information & Public Relations	11,500	11,500
Office Costs	51,800	51,800
Communications	53,100	53,100
Financial Charges	0	0
Other General Expenses	23,000	23,000
Shared Office and Services Costs	182,740	182,740
<b>Total GENERAL EXPENDITURES</b>	<b>397,640</b>	<b>397,640</b>
	0	
Partner National Societies	0	0
Other Partners (NGOs, UN, other)	0	0
<b>Total TRANSFER TO PARTNERS</b>		<b>0</b>
Programme and Services Support Recovery	427,230	427,230
<b>Total INDIRECT COSTS</b>	<b>427,230</b>	<b>427,230</b>
<b>TOTAL BUDGET</b>	<b>7,000,000</b>	<b>7,000,000</b>
<b>Available Resources</b>		
Multilateral Contributions		0
Bilateral Contributions		0
<b>TOTAL AVAILABLE RESOURCES</b>	<b>0</b>	<b>0</b>
<b>NET EMERGENCY APPEAL NEEDS</b>	<b>7,000,000</b>	<b>7,000,000</b>

## Reference documents



Click here for:

- [Previous Appeals and updates](#)
- Emergency Plan of Action (EPoA)

### For further information, specifically related to this operation please contact:

#### In Bangladesh Red Crescent Society:

- Md. Feroz Salah Uddin, secretary general; phone: +880 1811458500; email: [secretarygeneral@bdracs.org](mailto:secretarygeneral@bdracs.org)
- Md. Rafiqul Islam, deputy secretary general; phone: + 880 1811458501; email: [rafiqul.islam@bdracs.org](mailto:rafiqul.islam@bdracs.org)
- Md. Belal Hossain, director, disaster response; phone: +880 1711908467; email: [belal.hossain@bdracs.org](mailto:belal.hossain@bdracs.org)

#### In IFRC Bangladesh Country Office:

- Azmat Ulla, head of country office; phone: +880 1711521615; email: [azmat.ulla@ifrc.org](mailto:azmat.ulla@ifrc.org)
- Surendra Regmi, programme coordinator ; phone: +880 1738196480; email : [surendrakumar.regmi@ifrc.org](mailto:surendrakumar.regmi@ifrc.org)
- Hasibul Bari Razib, senior manager, humanitarian response & shelter; email: [hasibul.bari@ifrc.org](mailto:hasibul.bari@ifrc.org)

#### In the IFRC Asia Pacific Regional Office, Kuala Lumpur

- Mohammed Omer Mukhier, deputy regional director; email: [mohammedomer.mukhier@ifrc.org](mailto:mohammedomer.mukhier@ifrc.org)
- Necephor Mghendi, head of disaster and crises unit; email: [necephor.mghendi@ifrc.org](mailto:necephor.mghendi@ifrc.org)
- Vinod Muniandy, operations coordinator; email: [opscoord.southasia@ifrc.org](mailto:opscoord.southasia@ifrc.org)
- Riku Assamaki, logistics coordinator; mobile +60 12 298 9752; email [riku.assamaki@ifrc.org](mailto:riku.assamaki@ifrc.org)
- Rosemarie North, communications manager; email: [rosemarie.north@ifrc.org](mailto:rosemarie.north@ifrc.org)

#### In IFRC Geneva

- Nelson Castano, manager operations coordination; email: [nelson.castano@ifrc.org](mailto:nelson.castano@ifrc.org)

#### For IFRC Resource Mobilization and Pledges

- Alice Ho, partnership in emergencies coordinator; email: [mailto:RM.asiapacific@ifrc.org](mailto:mailto:RM.asiapacific@ifrc.org)

#### For Performance and Accountability support (planning, monitoring, evaluation and reporting enquiries)

- Liew Siew Hui, PMER manager; email: [siewhui.liew@ifrc.org](mailto:siewhui.liew@ifrc.org)

## How we work

All IFRC assistance seeks to adhere to the **Code of Conduct** for the International Red Cross and Red Crescent Movement and Non-Governmental Organizations (NGO's) in Disaster Relief and the **Humanitarian Charter and Minimum Standards in Humanitarian Response (Sphere)** in delivering assistance to the most vulnerable. The IFRC's vision is to inspire, **encourage, facilitate and promote always forms of humanitarian activities** by National Societies, with a view to **preventing and alleviating human suffering**, and thereby contributing to the maintenance and promotion of human dignity and peace in the world.

The IFRC's work is guided by Strategy 2020 which puts forward three strategic aims:



**Save lives,**  
protect livelihoods,  
and strengthen recovery  
from disaster and crises.



Enable **healthy**  
and **safe** living.



Promote social inclusion  
and a culture of  
**non-violence** and **peace**.