

www.ifrc.org
Saving lives,
changing minds.

Disaster relief emergency fund (DREF) Tajikistan: Earthquake

 International Federation
of Red Cross and Red Crescent Societies

DREF operation n° MDRTJ014
GLIDE n° EQ-2012-000082-TJK
22nd May 2012

The International Federation of Red Cross and Red Crescent (IFRC) Disaster Relief Emergency Fund (DREF) is a source of unearmarked money created by the Federation in 1985 to ensure that immediate financial support is available for Red Cross and Red Crescent emergency response. The DREF is a vital part of the International Federation's disaster response system and increases the ability of National Societies to respond to disasters.

CHF 138,467 has been allocated from the IFRC's Disaster Relief Emergency Fund (DREF) to support the Red Crescent Society of Tajikistan in delivering immediate assistance to some 558 households (3,348 beneficiaries) in the forms of distributing non-food items and providing psychosocial support to these families. The National Society is planning to replenish the items that were already distributed. Unearmarked funds to repay DREF are encouraged.



Red Crescent Society of Tajikistan Team conducting assessment in the disaster area.
Photo: Red crescent Society of Tajikistan

Summary: A 5.7 Richter scale earthquake struck Rasht valley, eastern part of Tajikistan on 13th May 2012 early in the morning at about 4:30 AM. The earthquake affected three districts of Nurobod, Rasht and Tavildara (at least 33 villages), killing 2 and affecting more than 2,531 people. According to the preliminary results, some 86 houses were destroyed and 276 damaged. A rock fall occurred immediately after the earthquake that has blocked and destroyed the highway that is connecting the eastern part of the country. Due to the road blockage and the problems with communication line for a number of days, some 114 families were completely cut off.

The detailed assessment is still in progress by the Governmental Emergency Commission and the damage and need information is still subject to change. On 16th May, Rapid Emergency Assessment and Coordination Team's (REACT¹) Rapid Response Team was deployed to conduct sectoral assessment of humanitarian needs. The preliminary report received from the teams was shared with all the stakeholders on 18th May.

¹ The Disaster Management Partnership in Tajikistan – Rapid Emergency Assessment and Coordination Team (REACT) was established in 2001 to promote the sharing of information, logistics and other resources between partners active in the disaster management sector, including the Committee of Emergency Situations and the Government of Tajikistan. The group that involves over 50 state, local and international organizations and entities meets regularly to coordinate and share experiences on issues related to various areas of disaster management, including preparedness, response, mitigation and capacity building activities with national bodies. During emergency situations the partnership works closely together, coordinating response and assistance. Please visit www.untj.org/react for the CP database and updates for the Sectoral Groups and WCDCR working groups. REACT RRT members Comity of Emergency Situation and civil Defence, Ministry of Healt, Wold Health Organization, Red Crescent Society of Tajikistan, United Nation OCHA, FOCUS Humanitarian Assistance, Aga Khan Development Network, UNDP DRMP, REACT Secretariat in Dushanbe

Since 13th May, the 110 most affected households were provided with non-food items by the Red Crescent Society of Tajikistan, and two tents were erected at National Society operational and first aid points.

With the support of the International Federation's Disaster Relief Emergency Fund (DREF), the Red Crescent Society of Tajikistan (RCST) intends to provide support to 558 families (3,348 beneficiaries). The operation is planned to include the provision of immediate non-food items support to 86 households (516 people) replenishment of the Red Crescent disaster preparedness stocks with non-food items already distributed to support 110 households (660 people). These 196 households, whose houses were damaged, will receive construction kits from the National Society to support their efforts in repairing their properties. Psychosocial support will be provided for all 558 families (3,348 beneficiaries) targeted households suffering from the earthquake and aftershocks psychological effects, as well as the provision of disaster awareness information materials.

This operation is expected to be implemented over 4 months, and will therefore be completed by 18th September 2012. A Final Report will be made available three months after the end of the operation, i.e. by 18th December 2012.

[<click here for the DREF budget; here for contact details; here to view the map of the affected area>](#)

The situation

As a result of strong earthquake that occurred on 13th May 2012, 33 villages in three districts were affected in the eastern part of Tajikistan. The earthquake occurred during the public prayer time, owing to this fact only a few number of people (24 people) have been injured and only two mortality cases were registered. According to the preliminary situation assessment, some 2,531 people have been heavily affected. 86 residential houses have been severely damaged and became uninhabitable and 276 houses with partially damages. The severely affected families are being hosted by their relatives and neighbours, at the same time, people from the neighbouring villages are providing them with food and hot meal.

Besides that, as a result of the earthquake a rock fall occurred that blocked and destroyed the main road which connects the central part of the country with the eastern part, over a length of 150 meters. The height of the landslide debris covering the road ranged from 4 to 6 meters. Some 114 families were completely cut off for a number of days. On 15th May, the road has been cleared from debris and the assessment team managed to reach the damaged villages.

The detailed assessment of the damages and needs in the disaster affected area conducted by the joint commission, consisting of the Committee of Emergency Situations and Civil Defence (CoES), Red Crescent Society of Tajikistan (RCST), local authorities, Rapid Emergency Assessment and Coordination Team (REACT) partners, government representatives and community leaders. The preliminary damage information provided by REACT secretariat is shown below in Table 1.

Table 1

Affected area			Total district population	Residencies / houses		Population heavily affected	Other damages
District	Administrative centre (jamoat)	Number of villages		Destroyed	Damaged		
Rasht	Askalon Qalai Surkh, Khijborak	7	99,300	8	11	130	1 man died & 4 injured, 36 cattle killed, 1 school damaged and 2 vehicles destroyed
Nurobod	Samsoliq Mujikharf Khumdon Darband Yakhak Yust	20	67,100	31	219	1,750	1 person killed and 147 kitchen gardens affected
Tavildara	Tavildara Childara	6	19,700	47	46	651	District Courthouse, Firefighting unit and Boarding school damaged; 2 schools destroyed, 2 mosques and 1 library damaged
Total		33	186,100	86	276	2,531	

Source: RAPID EMERGENCY ASSESSMENT AND COORDINATION TEAM

Coordination and partnerships

On 15th May 2012, the Government of Tajikistan and CoES delivered 140 family tents (30 for Rasht district and remained 110 tents for Tavildara district) and food (wheat flour - 15MT, sugar - 3,750kg, vegetable oil - 1,500 litres, rice - 3,750kg Pasta - 1,500kg) to the affected areas to be distributed among affected people. According to CoES, the food distribution has already started, but distribution of tents is planned to be started after the finalisation of the beneficiary lists of the families who lost their houses.

On 16th May 2012, REACT has deployed its Rapid Response Team (RRT) consisting of all REACT partners' representatives, including IFRC Country representation and Red Crescent Society of Tajikistan. The National Society representative has joined RRT to assess the situation in disaster affected areas.

World Health organization provided 10 health Emergency trauma kits through Ministry of Health.

On 16th May 2012, the President of the Republic of Tajikistan visited the affected districts and held a meeting with local government officials to direct response and recovery activities. The Emergency Commission was instructed to finalize the damage assessment results until 21st May. Local authorities were asked to make necessary arrangements to relocate affected families (based on their request) to safe areas within Rasht valley or to Qumsangir district of Khatlon province (south-west of Tajikistan) and to accomplish reconstruction of the affected houses and infrastructure until September 2012. Some 238,000 Tajik Somonies (~USD 49,520) from the President's Reserve Fund will be allocated to 174 families, whose houses were severely affected by the earthquake. The destroyed secondary school #56 in Rubotnol village of Tavildara district will be rebuilt and re-equipped with support funding from the President's Reserve Fund.

On 16th May 2012, the President of Tajikistan met the Red Crescent Society of Tajikistan Deputy Secretary General and IFRC Country Representative in Tajikistan in the field to discuss the actions taken by the National Society to assist the affected population. The President of Tajikistan expressed his appreciation to both organizations and requested to provide psychosocial support to people suffered from disaster effect.

The Federation Country Representation is supporting the Red Crescent Society of Tajikistan through technical advice and recommendations to provide in time and effective support.

On 14th May 2012, the Federation Country Representation and Red Crescent Society of Tajikistan met with International Committee of the Red Cross (ICRC) representatives in Dushanbe office to discuss and coordinate further actions in disaster affected areas.

Red Cross and Red Crescent action

The Red Crescent Society has been active from the first hours of the earthquake. The National Society has deployed 50 Local Disaster Committee (LDC) members in all three affected districts and 8 National Disaster Response Team (NDRT) members from Saghirdasht and Rasht Emergency Response Centers. The deployed staff and volunteers conducted needs assessment rendered first aid and provided psychosocial support (PSS) to disaster affected people in Rasht, Nurobod and Tavildara districts.

Up to date, 4 injured people received first aid, 116 affected people were provided with psychosocial support, and 110 households, which were cut off because of the road blockage received humanitarian aid with non-food items. Two tents were erected at National Society operational and first aid points. The distributed non-food items were transported from Saghirdasht (20 sets), Rasht (11 sets) and Dushanbe city (79 sets) Emergency Response Center warehouses.

The table below shows distributed items by administrative centers and villages.

Table 2

Affected area		Population supported by RCST			Number of items distributed (pcs and sets)													
District	Administrative centre (jamoat)	Number of villages	Number of families	Number of people	Tents	Quilts	Pillows	Mattresses	Bed-linen	Hygiene kits	Kitchen sets	Thermos	Water cans	Plastic sheeting	Hoes	Shovels	Candles	Buckets
Rasht	Askalon Qalai Surkh	2	11	66	2	66	66	66	66	11	11	11	11	11	11	11	33	11
Nurobod	Komsomolobod Samsoliq Mujikharf Khumdon Darband Yakhak Yust Hakimi	7	34	204	0	204	204	204	204	34	34	34	34	34	34	34	102	34
Tavildara	Tavildara Childara	2	65	390	0	390	390	390	390	65	65	65	65	65	65	65	195	65
Total		11	110	660	2	660	660	660	660	110	110	110	110	110	110	110	330	110

Beneficiary selection: Beneficiaries were selected according to the criteria agreed with the local authorities, beneficiary representatives and assessment results which, revealed the number of households, whose houses are totally destroyed or partly damaged and who represent the most vulnerable population, such as single-parent families, multi-children families and elderly living alone.

The needs

The situation of the affected people and their main needs identified during the assessments are as follows:

SHELTER

Most of the affected buildings were constructed within last 15-20 years often neglecting existing construction regulations. Walls and foundation, in most of the cases, are made of mud bricks and stones, with rare cases of cement used. Walls of the damaged houses were collapsed towards outside of the building, thus significantly reducing the number of casualties. Affected families have been relocated to their relatives' and neighbours' houses. A need for non-food items including bedding sets, kitchen sets was identified, as many household utensils including kitchenware and bedding are dirty and not suitable for usage. Severely and partially damaged houses need to be renovated and there is a need for construction tools with information materials on earthquake resistance constructions. However, due to cold weather – the affected area is in the mountains therefore temperatures are low especially during the nights – winterized tents are required for those families who are still residing in their damaged houses.

HEALTH

Premises of the Central District Hospital (CDH) of Tavildara have been severely damaged. Access to medical care in the affected areas, though, has not been interrupted. Most of the affected people suffer from post-traumatic stress disorder and require psychosocial support.

FOOD

Kitchen gardens, animal and poultry breeding are the main sources of food in the affected areas. Food rations for 10 days were provided by the Government. The World Food Programme (WFP) participated in the needs assessment and joint decision of WFP and the government on the release of food will be made after processing of the results.

EDUCATION

Three schools in Tavildara district were severely damaged. School attendance has been interrupted.

WASH (Water, Sanitation and Hygiene)

No significant damage was caused to water supply systems, as some villages use local water springs. There is no epidemic threat related to water-borne diseases at this time.

The proposed operation

The operation envisages an initial, one-time supply of non-food items to the targeted beneficiaries, rendering psychological support, provision of construction tools, information materials to help the most affected population to cope with the consequences of the earthquake. To address the situation, the Red Crescent Society with support of the International Federation will assist 196 households (1,176 people) with construction tools, tarpaulins, bedding sets, cooking sets, water cans and hygiene kits. Five trained Red Crescent Society professionals will be deployed to provide psychosocial support for 362 households (2,172 people), technical support and on the spot training on PSS activities for the National Society volunteers.

This proposed DREF operation will address:

- To support the immediate needs of 86 most affected households in Nurobod and Tavildara districts by the provision of non-food items;
- In order to enhance community mobilization the distribution of 98 construction kits will be organized to 196 affected households in Nurobod, Rasht and Tavildara districts for the renovation and/or reconstruction of houses. Two households will share one construction kit.
- Replenishment of already distributed 110 non-food items sets in RCST warehouses in Rasht, Saghirdasht and Dushanbe Emergency Response Centers;
- Rendering psychosocial support to 362 households (2,172 people);
- Provision of information materials on disaster awareness and construction of earthquake resistance buildings in according with the Government rules and procedures.

Relief distribution and Replenishment (basic NFI)

Outcome 1: Immediate needs of 86 families most affected by the earthquake in Nurobod and Tavildara on non-food items are met by the Red Crescent Society of Tajikistan;
Outcome 2: The disaster preparedness stocks for 110 households are replenished with non-food items in Saghirdasht, Rasht and Dushanbe Emergency Response Centres (ERC)².

Output 1: 86 most affected families received non-food items;
Output 2: 110 non-food items sets are procured, transported and prepositioned in three RCST ERCs.

Activities planned:

- Complete detailed emergency needs assessments.
- Prepare lists of beneficiaries together with the local authorities and in accordance with the Red Crescent's assessment procedures and format.
- Procure and transport non-food items to distribution points and ERCs.
- Distribute relief supplies and control supply movements from the point of dispatch to the end users.
- Monitor and evaluate the relief activities and report on the relief distributions.
- As part of the monitoring and evaluation activities, conduct a survey among the people reached to find out their opinion about the goods and services received.

Table 3

Affected area		# of people to receive NFIs			Number of items to be distributed (pcs and sets)													
District	Administrative centre (jamoat)	Number of villages	Number of families	Number of people	Tents	Quilts	Pillows	Mattresses	Bed-linen	Hygiene kits	Kitchen sets	Thermos	Water cans	Plastic sheeting	Hoes	Shovels	Candles	Buckets
Nurobod	Komsomolobod Samsoliq Mujikhar Khumdon Darband Yakhak Yust Hakimi	7	20	120	0	120	120	120	120	20	20	20	20	20	20	20	60	20
Tavildara	Tavildara Childara	2	66	396	0	396	396	396	396	66	66	66	66	66	66	66	198	66
Total		9	86	516	0	516	516	516	516	86	86	86	86	86	86	86	258	86

² See Table 2 for more details about the items

Emergency Shelter

Outcome: 196 most affected households are provided with construction tools (one kit will be distributed for two households) and information materials to help them cope with the consequences of the earthquake, and preserve their human dignity

Output: 196 households (1,176 people) are provided with construction tools and information materials.

Activities planned:

- Complete the detailed emergency shelter needs.
- Prepare lists of beneficiaries together with the local authorities and in accordance with the assessment procedures and format.
- Reprint the disaster awareness and information materials.
- Procure and transport items and information materials to affected areas.
- Distribute supplies and control supply movements from the point of dispatch to the end users.
- Monitor and evaluate the emergency shelter activities.
- Conduct beneficiary satisfaction survey in all targeted villages.

Table below reflecting the content of each construction kits

Table 4

1 (one) construction tools' kits consist of:																					
Axe	Metal bucket	Claw hammer	Two man saw	Saw	Nails 100mm	Roofing nails	Claw bar	Glasscutter	Hand plane	Spirit level	Tape measure	Small trowel	Large trowel	Crowbar	Sledge hammer	Turn screws	12mm rope (10m long)	Pliers	Tin snips	Bucket	Bag with logos
1 pcs	2 pcs	1 pcs	1 pcs	1 pcs	5 kg	3 kg	1 pcs	1 pcs	1 pcs	1 pcs	1 pcs	1 pcs	1 pcs	1 pcs	1 pcs	1 pcs	1 pcs	1 pcs	1 pcs	1 pcs	1 pcs

The Committee of Emergency Situations and Civil Defence will provide technical support to the people about the constructions. Evaluation of the constructions will be conducted by the Committee of Emergency Situations and Civil Defence and the Red crescent Society will also participate in the activity.

Emergency Health

Outcome: 362 families (2,172 people) have benefited from psychosocial support to recover from the effects of the earthquake shocks

Output: 362 families (2,172 people) were provided with psychosocial support

Activities planned:

- Complete the detailed psychosocial support needs assessment.
- Develop community and beneficiary targeting strategy in coordination with local and health authorities.
- Prioritize beneficiaries (children, women and old people).
- Establish a psychosocial support team from RCST trained volunteers and staff who will provide PSS to population and technical support training to 10 Red Crescent staff and volunteers.
- Deliver psychosocial support to prioritized beneficiaries.
- conduct a beneficiary satisfaction survey among the people reached

The visibility of the Red Crescent and the International Federation will be promoted through banners with Red Crescent/International Federation logos at distribution points, as well as through distribution of disaster awareness printed materials.

At the end of the operation a workshop will be organized on the national level with the participation of the teams involved in the implementation of the disaster response operation to share experiences and lessons learnt during the operation.

Contact information

For further information specifically related to this operation please contact:

- **Tajikistan Red Crescent Society:** Zafar Muhabbatov, Secretary General, office phone: +992 372 24 03 74, email: zafar.muhabbatov@mail.ru
- **IFRC Country Representation:** Eric Michel-Sellier, Country Representative in Dushanbe, phone: +992 372 24 42 96, email: eric.michellsellier@ifrc.org
- **IFRC Zone Office:** Alberto Monguzzi, Acting Disaster Management coordinator office phone: +36 1 8884 500; email: alberto.monguzzi@ifrc.org
- **IFRC Geneva:** Cristina Estrada, Senior Officer, Operations Quality Assurance, phone: +41 22 730 4260, email: christina.estrada@ifrc.org



[Click here](#)

1. DREF budget is available [here](#)
2. Map of the affected area is available [here](#)
3. Click [here](#) to return to the title page

How we work

All IFRC assistance seeks to adhere to the Code of Conduct for the International Red Cross and Red Crescent Movement and Non-Governmental Organizations (NGO's) in Disaster Relief and the Humanitarian Charter and Minimum Standards in Disaster Response (Sphere) in delivering assistance to the most vulnerable.

The IFRC's vision is to inspire, encourage, facilitate and promote at all times all forms of humanitarian activities by National Societies, with a view to preventing and alleviating human suffering, and thereby contributing to the maintenance and promotion of human dignity and peace in the world.

www.ifrc.org

Saving lives, changing minds.



The IFRC's work is guided by Strategy 2020 which puts forward three strategic aims:

1. Save lives, protect livelihoods, and strengthen recovery from disaster and crises.
2. Enable healthy and safe living.
3. Promote social inclusion and a culture of non-violence and peace.

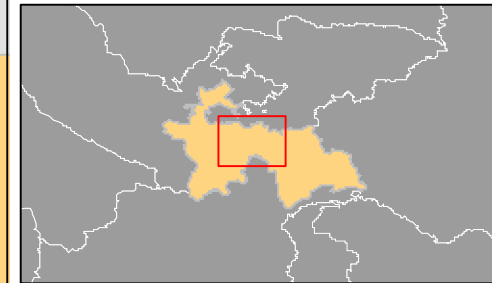
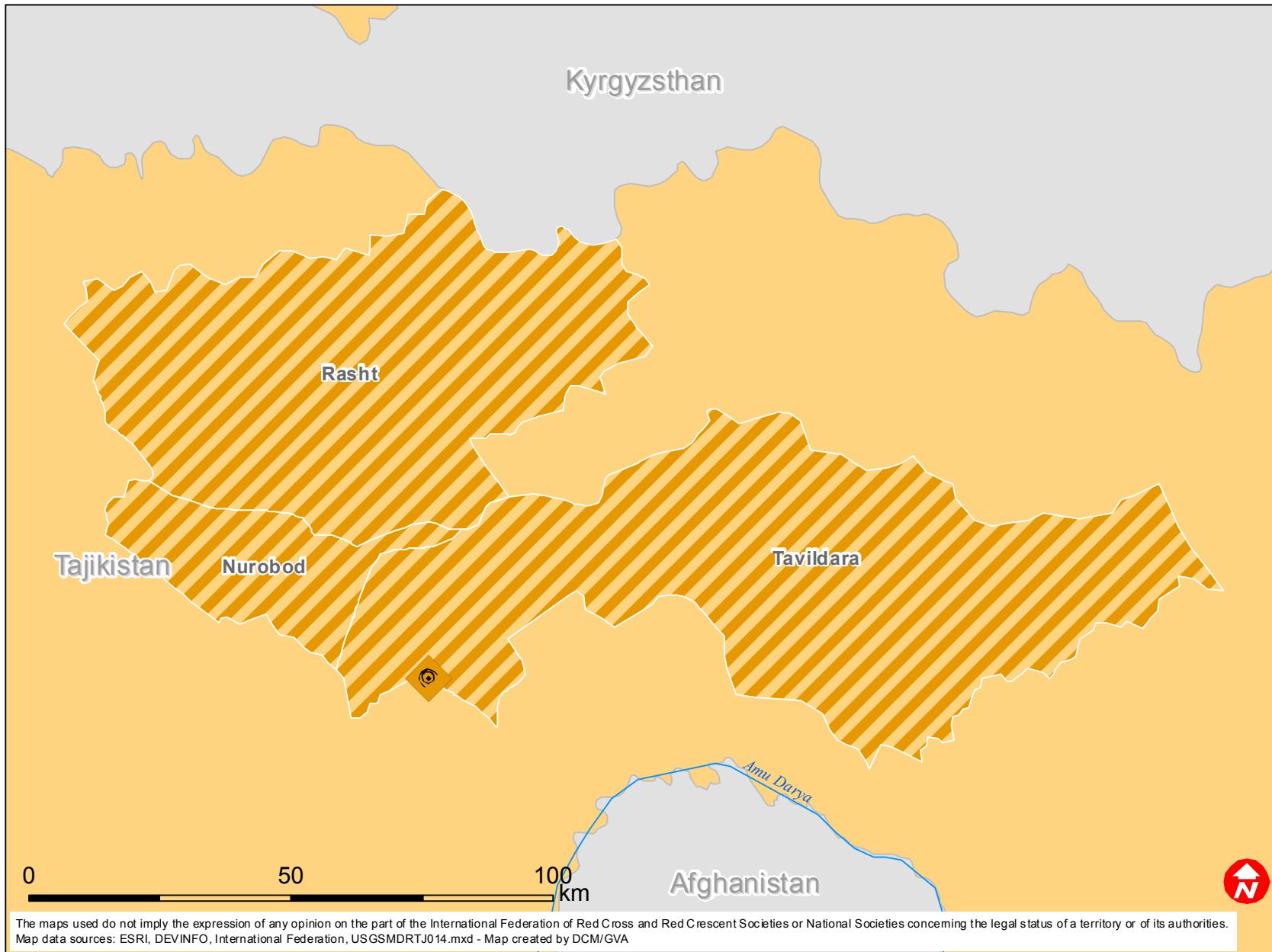
DREF OPERATION



Tajikistan

Budget Group	DREF Grant Budget CHF
Shelter - Relief	
Shelter - Transitional	
Construction - Housing	
Construction - Facilities	
Construction - Materials	16,888
Clothing & Textiles	72,772
Food	
Seeds & Plants	
Water, Sanitation & Hygiene	6,064
Medical & First Aid	
Teaching Materials	
Ustensils & Tools	10,343
Other Supplies & Services	
Emergency Response Units	
Cash Disbursements	
Total RELIEF ITEMS, CONSTRUCTION AND SUPPLIES	106,068
Land & Buildings	
Vehicles Purchase	
Computer & Telecom Equipment	
Office/Household Furniture & Equipment	
Medical Equipment	
Other Machinery & Equipment	
Total LAND, VEHICLES AND EQUIPMENT	0
Storage, Warehousing	
Distribution & Monitoring	2,000
Transport & Vehicle Costs	7,200
Logistics Services	
Total LOGISTICS, TRANSPORT AND STORAGE	9,200
International Staff	
National Staff	
National Society Staff	3,280
Volunteers	986
Total PERSONNEL	4,266
Consultants	
Professional Fees	
Total CONSULTANTS & PROFESSIONAL FEES	0
Workshops & Training	4,500
Total WORKSHOP & TRAINING	4,500
Travel	2,250
Information & Public Relations	2,232
Office Costs	
Communications	1,500
Financial Charges	
Other General Expenses	
Shared Support Services	
Total GENERAL EXPENDITURES	5,982
Programme and Supplementary Services Recovery	8,451
Total INDIRECT COSTS	8,451
TOTAL BUDGET	138,467



Tajikistan: Earthquake



-  Epicentre
-  Affected districts