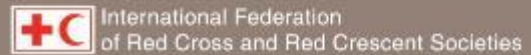


www.ifrc.org  
Saving lives,  
changing minds.

# Revised Emergency Appeal

## Bangladesh: Population Movement Operation



Revised Appeal n° MDRBD018

260,000 people to be assisted

Appeal launched 18 March 2017

Glide n° [OT-2017-000003-BGD](#)

**Revised Appeal budget:** CHF 82 million  
Revised budget increased from CHF 51 million  
excluding ERUs.

Revision n° 6 issued 21 October 2019

**Funding requirements<sup>1</sup> (01/09/2019 – 31/12/21):**  
**58 million Swiss francs.**  
**Funding gap: 45 million Swiss francs**

Appeal ends 31 December 2021  
(revised)

**973,858 Swiss francs including DREF allocated and  
replenished: January 2017: 273,151 Swiss francs;  
September 2017: 690,707 Swiss francs, June  
2018:100,000 Swiss francs**

This revised Emergency Appeal, with an increased budget from 51 million Swiss francs to **82 million Swiss francs** seeks an additional **45 million Swiss francs**. The funds will enable the International Federation of Red Cross and Red Crescent Societies (IFRC) to support the Bangladesh Red Crescent Society (BDRCS) to continue delivering assistance and support to 260,000 people in Cox's Bazar **until 31 December 2021**. Partner National Societies in-country are also contributing to these targets through in-kind contributions and bilateral interventions. This revision recognizes the ongoing needs of the camp and host population in a prolonged crisis, likely to become a protracted crisis, with the impact of cyclical natural disasters. In this timeframe, the response aims to absorb and put in place transition activities to meet longer-term needs. The BDRCS needs to be equipped with additional capacities to transform response modalities from emergency towards more sustainable and community-driven solutions, as the partner of choice for Movement partners. IFRC, with support from Partner National Societies, aims to redefine and reshape the role of BDRCS to take a lead role in expanding its organisational presence and enhanced capacity to reach the most vulnerable in the host and guest communities through the One Window Framework in the changing humanitarian landscape.

The long-term humanitarian needs of people from Myanmar will be met, through this revised Appeal, with services such as shelter, basic food and non-food items, WASH, medical health and psychosocial support, livelihoods, protection and Disaster Risk Reduction. The host communities will also be a part of the overall target, specifically in the areas of shelter, WASH, livelihoods and other interventions. Social inclusion, gender, disability and age will be fully embedded across all activities and contexts.

Additional funds and support are needed to continue supporting the National Society in this prolonged crisis. Detailed sector needs can be seen in the latest revision of the [Emergency Plan of Action](#).

## Background to the crisis

More than one million people are currently living in 34 extremely congested camps, displacing an already vulnerable host population from their homes and livelihoods. Continued efforts have been made by the humanitarian community to protect the people from risks and natural and climatic hazards and render much needed humanitarian assistance, which has resulted into prolonged emergency response. The people from Rakhine State continue to face instability, poverty, malnutrition and other critical issues.

<sup>1</sup> Funding Requirement refers to programming needs in the future phase of this revised EPOA 1 September 2019 – 31 December 2021. It excludes funding received and spent in the two years prior to this revision.

Since August 2017, over 742,000 people from Rakhine State in Myanmar fled violence and are hosted in Bangladesh. More than 912,000 displaced women, men, girls and boys are living in overcrowded camps. Children make up 55 per cent of the total displaced population and women and girls constitute 52 per cent of the population. One in three displaced families have at least one easily identifiable protection vulnerability. Whilst the pace of arrivals has decreased, people from Rakhine continue to arrive in Bangladesh.

Pathways to durable solutions for the displaced population – such as re-settlement, local integration or repatriation- are still unclear. The situation remains severe as the displaced population is facing additional threats. They live in congested sites that impact all aspects of living and are not adequately equipped to withstand the impacts of the monsoon rains and cyclone seasons – with alarmingly limited options for evacuation. From 2 July 2019, the monsoon season has caused heavy rainfall over Cox's Bazar district affecting camp settlements with floods. At least 18,000 people were affected with damage to their shelter, road blockage due to floods and overflowing latrines.

The crisis requires a large-scale and sustainable response to address immediate and longer-term needs of both the displaced and host communities. A balanced approach is needed to maintain the **social cohesion** between host and displaced people. The Federation-wide response in Cox's Bazar is aimed at providing humanitarian assistance and building resilience across three response priorities and three enabling actions with the cross-cutting themes of protection, gender and inclusion, as well as community engagement and accountability. Our approach focuses on the needs, vulnerabilities and potentials of the people from Rakhine, irrespective of their legal status, type, or category. It will also address the needs and build on the capacities of host communities living in the surrounding areas. Beyond providing immediate emergency assistance and addressing protection needs, the IFRC also recognizes a role for humanitarian diplomacy in the context of migration and displacement, and therefore, supports for the realization of durable solutions.



Children continue receiving access to clean water in camp. (Photo: IFRC)

Our focus with social inclusion will be to ensure processes and measures to address, reduce and ultimately end the systematic exclusion of individuals are included within all interventions in this plan of action, to allow both camp and host communities have full and equal access to resources and opportunities. One of the major changes in this revised appeal is the upscaling of activities and interventions for host communities through the provision of midterm shelters and Participatory Approach for Safe Shelter Awareness (PASSA) trainings to enhance resilience, cash based interventions to address the needs of those households whose livelihoods have been affected by the crisis, the construction of permanent health infrastructures such as Primary Health Care Centres and Mother and Child Health Care Health Centres (PHCC, MCH) and improving water systems and sanitation, including in schools.

These new activities will be a helpful approach to reduce the already growing tensions between the camp and host communities and enhance community resilience. IFRC believes localization strategy should be a main element of this operational strategy to continue to localize assistance and uphold social harmony within and between the two communities. A monitoring framework that includes system and protocols and mechanisms to collect, analyze and verify information and obtain feedback from communities is in place to measure the impact of our programming in both communities. Regular perception surveys will also be carried out to track community perspectives about the situation over time in order to inform and improve our programming.

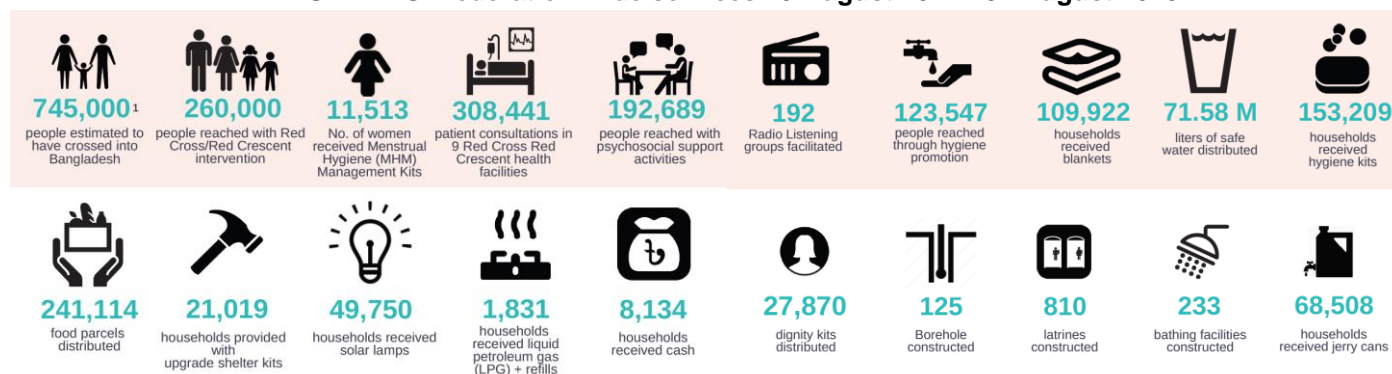





Consultations with women in host communities. (Photo: IFRC)

<b>October-December 2016</b>	<ul style="list-style-type: none"> <li>○ A large number of people from Rakhine State, Myanmar moved towards Cox's Bazar, Bangladesh following an outbreak of violence.</li> <li>○ On 29 December 2016, the Government of Bangladesh (GoB) requested the support of BDRCS to provide humanitarian assistance in Cox's Bazar.</li> </ul>
<b>March 2017</b>	<ul style="list-style-type: none"> <li>○ On 18 March, IFRC launches an <a href="#">Emergency Appeal</a> for CHF 3 million, to enable the delivery of assistance to 25,000 people.</li> </ul>
<b>April/May 2017</b>	<ul style="list-style-type: none"> <li>○ On 30 April, Cyclone Mora made landfall in Cox's Bazar, killing seven people and damaging more than 50,000 homes/structures in Chittagong and Cox's Bazar, including in makeshift settlements. On 15 May, IFRC revised its <a href="#">Emergency Appeal</a> (1<sup>st</sup> revision) to CHF 4 million to support 25,000 people and the additional needs.</li> </ul>
<b>August/September 2017</b>	<ul style="list-style-type: none"> <li>○ On 25 August, violence in Myanmar's state of Rakhine prompts the start of a new influx into Bangladesh. On 15 September, the IFRC <a href="#">Emergency Appeal</a> (2<sup>nd</sup> revision) was revised up to CHF 12 million, to meet the humanitarian needs of 100,000 people.</li> </ul>
<b>October 2017</b>	<ul style="list-style-type: none"> <li>○ On 11 October, IFRC categorised the situation as crisis level "red", indicating that the emergency is of a scale and complexity that demands an organization wide priority.</li> <li>○ On 23 October, IFRC <a href="#">Emergency Appeal</a> (3<sup>rd</sup> revision) again revised to CHF 33.5 million with associated targets to meet the humanitarian needs of 200,000 people. The Secretary General of IFRC, Elhadj As Sy, visited the Population Movement Operation on 25 – 26 October 2017.</li> </ul>
<b>February 2018</b>	<ul style="list-style-type: none"> <li>○ A partnership meeting was organized in Cox's Bazar on 13 to 15 February 2018. The Federation-wide One Window Framework was formalized and was shared amongst the partners as the working modality for all partner National Societies.</li> </ul>
<b>June 2018</b>	<ul style="list-style-type: none"> <li>○ Emergency Appeal is revised (4<sup>th</sup> revision) increasing the budget from 33.5 million Swiss francs, to 36.45 million Swiss francs targeting 200,000 people.</li> </ul>
<b>October 2018</b>	<ul style="list-style-type: none"> <li>○ Operations update no.7 is published informing on the activities accomplished as per reporting period for the Population Movement Operation (PMO).</li> </ul>
<b>November 2018</b>	<ul style="list-style-type: none"> <li>○ In November 2018, the Governments of Bangladesh and Myanmar announced that the repatriation process would start on 15 November 2018. As of October 2019, no repatriations back to Myanmar have taken place due to conditions not being conducive for return and no concrete evidence that any members of the displaced community were ready to return.</li> </ul>
<b>January 2019</b>	<ul style="list-style-type: none"> <li>○ Finnish Red Cross handed over Emergency Field Hospital to BDRCS, to continue the services for the people in need and affected by the crisis.</li> </ul>
<b>May 2019</b>	<ul style="list-style-type: none"> <li>○ Emergency Appeal is revised (5<sup>th</sup> revision) increasing the budget from 36,455,381 million Swiss francs, to 51 million Swiss francs targeting 260,000 people.</li> </ul>

## The Red Cross Red Crescent response to date

### IN NUMBERS: Federation-wide services 25 August 2017 - 31 August 2019:



Sector	Appeal-funded achievements 25 August 2017 - 31 August 2019 <sup>2</sup>	
<b>Shelter and Household items</b>	<ul style="list-style-type: none"> <li>○ 9,029 households trained via Participatory Approach for Safe Shelter Awareness (PASSA).</li> <li>○ 6,054 households received tie down kits knots.</li> <li>○ 3,155 households received upgraded shelter kits.</li> <li>○ 17,718 households received shelter kits.</li> <li>○ 29,061 households received emergency shelter kits.</li> <li>○ 1,961 households have received Transitional Shelter Assistance in Camp 11.</li> <li>○ 2 model shelters constructed for retrofitting in host communities of Palong Khali union- ward 5.</li> <li>○ 1,444 households received liquid petroleum gas (LPG) cylinder with its accessories in camp community and 387 households in host community.</li> <li>○ 6 camp and 3 host communities received LPG refills.</li> </ul>	 <p>Safe shelter awareness session. <i>(Photo: IFRC)</i></p>
<b>Livelihoods and Basic Needs</b>	<ul style="list-style-type: none"> <li>○ 7,718 households in camp and 294 households in host) communities received unconditional cash grants (BDT 5,500, approx. 65 Swiss francs).</li> </ul>	
<b>Health and Care</b>	<ul style="list-style-type: none"> <li>○ 84,794 people treated in Red Cross Hospital<sup>3</sup>.</li> <li>○ 221,208 people reached through CBHFA outreach programme of BDRCS Field Hospital.</li> </ul>	
<b>WASH</b>	<ul style="list-style-type: none"> <li>○ 5 completed production boreholes with piped networks plus 1 production borehole in the field hospital.</li> <li>○ 8 deep tube wells constructed.</li> <li>○ 90 emergency latrines constructed.</li> <li>○ 29,780 people received Aquatabs and hygiene kits.</li> <li>○ Faecal sludge lab in place.</li> <li>○ 1 Knowledge, Attitudes, and Practices (KAP) survey conducted.</li> <li>○ 11,084 women/girls have received a Menstrual Hygiene Management (MHM) kit.</li> <li>○ 3,700 people with water network.</li> </ul>	 <p>Menstrual Hygiene Management kit distribution. <i>(Photo: IFRC)</i></p>
<b>Protection Gender and Inclusion</b>	<ul style="list-style-type: none"> <li>○ 27,870 dignity kits distributed to women and girls.</li> <li>○ 46,890 umbrellas distributed to guest and host community members.</li> <li>○ 43,595 portable solar lights distributed.</li> <li>○ 1,036 staff and volunteers trained and or informed in protection, gender and inclusion</li> <li>○ 3 centres for Dignity, Access, Participation and Safety (Known as "DAPS centres") constructed.</li> <li>○ 50 sewing machines procured for tailoring project running in the DAPS centres.</li> </ul>	 <p>Women's tailoring project at DAPS Centre. <i>(Photo: IFRC)</i></p>

<sup>2</sup> Figures are since the beginning of the operation reflecting only IFRC funded activities through this Appeal.

<sup>3</sup> Red Cross Hospital has transformed to Primary Health Care Centre on January 2019.

### Community Engagement and Accountability (CEA)

- 8,339 people participated in Radio Listening groups.
- 2,781 people consulted in perception surveys.
- 2,214 staff and volunteers trained and/or informed in CEA.
- 1 permanent Information and Feedback Hub constructed.



Community Engagement and Accountability information session. (Photo: IFRC)

### Disaster Risk Reduction (DRR)

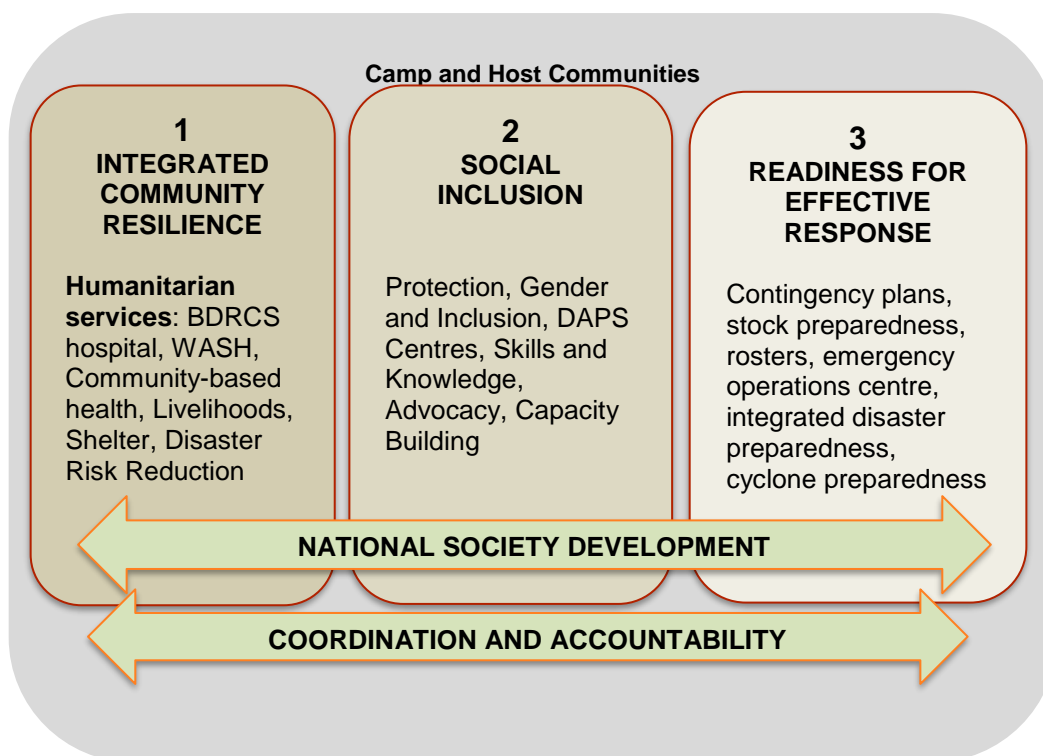
- 2,335 volunteers trained to support Cyclone Preparedness Programme (CPP) in all camps as well as surrounding communities of camp 26 in Teknaf.
- 922,664 people reached (912,068 from camps and 10,596 in host communities) through Cyclone preparedness message dissemination. This was done through a collective effort with Communication with Communities (CwC) Working Group during the last Cyclone Season in 2019.

### Participating National Societies currently involved in the operation by sector:

Partner National Society	No. of International Staff	No. of national staff	Shelter	Health	WASH	Food Security	PGI	DRR
American Red Cross	1	31						
British Red Cross	3	7						
Canadian Red Cross	1							
Danish Red Cross	4	3						
German Red Cross	6	20						
Japanese Red Cross	3	2						
Qatar Red Crescent	3	3						
Swedish Red Cross	1							
Swiss Red Cross	1	4						
Turkish Red Crescent	5	11						

## The operational strategy: 2019-2021

Moving forward, the IFRC and BDRCS operation focusses on five core areas as shown in Figure 1. The concept of social inclusion does not by itself represent a durable solution but recognizes the importance of peaceful coexistence of communities within the camps as well as between host communities and camp community. Therefore, this revised Emergency Appeal includes activities that mitigate tensions and promote positive relations between and within guest and host communities, while conforming with the relevant policies of the Government of Bangladesh and humanitarian actors. Social inclusion initiatives have been integrated into the long-term operational plans of all sectors in order to ensure that both camp and host communities have as equal access as possible to resources and opportunities. Our focus will be to ensure that measures to address, reduce and ultimately end the systematic exclusion of individuals and groups are included within all interventions. In addition, targeted activities to promote social inclusion are highlighted in the Community Engagement and Accountability (CEA) plan.



**Figure 1: Five core areas of intervention**

## Areas of intervention

### 1. Integrated community resilience:

This area of work comprises the humanitarian programming in the Areas of Focus for which IFRC and Bangladesh Red Crescent are best known.

### Disaster Risk Reduction



**People targeted:**

1,000,000 indirect beneficiaries; 200,00 direct beneficiaries

**Requirements:** 11,699,489

Since the beginning of the response to the crisis, Disaster Risk Reduction (DRR) within the camps and neighboring host communities has been essential to reduce vulnerabilities to disasters, including environmental vulnerabilities and other risk factors that may exacerbate the hazard impacts. BDRCS and IFRC promote DRR through an integrated approach to prepare, mitigate and prevent disaster risks through specific activities such

as risks assessment enabling design of prevention, mitigation and preparedness measures in host communities.

The Community Resilience Framework aims to link every sector including livelihoods, WASH, shelter, PGI and health services using community risk assessment as an entry point. It identifies specific vulnerabilities and priority risks at community level and mitigates risks through specific activities and promotion of approaches that encompass protection, gender, and inclusion, youth engagement, strengthening of social networks, women's empowerment and livelihoods. Through this revised appeal this model will be widely promoted in DRR fora (DRR stakeholders' workshops, DRR in Host Communities Working Group) and extended to camps in collaboration with Camp In-Charge and Site Management Agency. Technical expertise will be made available to strengthen capacities of organizations implementing DRR activities at camp level as community risk assessments are currently not implemented yet in this context. The Plan of Action also addresses key cross-cutting issues, such as community engagement and accountability (CEA). A [Resilience Framework](#) has been drafted to support BDRCS efforts in assisting people from the camps and host communities to adopt risk-informed, holistic approaches to address their underlying vulnerabilities.

## Shelter and Non-Food Items



**People targeted:** 200,000 (in camp and host communities)  
**People reached:** 272,305 people<sup>1</sup>  
**Requirements:** 19,676,384 CHF  
**Funding gap:** 7,169,676 CHF

The shelter component includes four types of intervention: Care and maintenance of shelters, construction of mid-term shelters, transitional shelter assistance and host community support. For maintaining shelters, the BDRCS will adjust the method to deliver shelter construction materials to the people in the camps.

This will be done through cash-based interventions, preferably commodity vouchers, to allow the people to select from a catalog of items. BDRCS will also provide mid-term shelters in newly developed camp areas, and transitional shelter assistance in camps and host communities. More than 9,000 households have been PASSA trained in camps and host communities- which will continue to be an integral part of the shelter initiative to promote community-driven shelter constructions. Targeted households will also be provided with essential household items and emergency shelter items, such as Liquefied Petroleum Gas (LPG) sets, winterization kits, and monsoon preparedness items amongst others.

## Livelihoods



**People targeted:** 125,000  
**Requirements:** 3,662,067 CHF  
**Funding gap:** 3,034,104 CHF

At present, there are several restrictions on supporting the displaced communities with livelihoods (alongside restrictions on skills training, formal education and paid work outside the camps). In this context, the BDRCS will aim to provide 10,000 households (both displaced and host communities) with unconditional cash grants. The BDRCS will continue to monitor these restrictions, including humanitarian diplomacy initiatives to

allow skills training for the displaced communities. IFRC completed a [Livelihood framework](#) in coordination with BDRCS and Partner National Societies working in Cox's Bazar.

## Health and Care



**People targeted:** 200,000 (from guest and host communities)  
**Requirements:** 14,612,709 CHF  
**Funding gap:** 10,147,485 CHF

The IFRC will continue its support to the BDRCS hospital as this is one of the IFRC wide's flagship project. The IFRC will also support BDRCS to construct a primary health care center and cover operational costs for two years in order to strengthen the health and care system targeting host and guest communities. Similarly, a Maternal and Child Health Care centre will be built and two years of operational costs covered to improve and support the health needs of mother and children in Cox's Bazar and people living in

camps. The Islamic Development Bank (IsDB) project, that is looking at increasing the opportunities of host communities, is supporting these constructions including minimum equipment as standard equipment recommended by the Ministry of Health, Human resources and furniture for these centers. Minimum operational costs for two years are expected to be funded through this revised appeal. Community-based health programming using the IFRC Community-based First Aid approach to ensure the outreach is also part of the health component of this revised appeal. The community health program includes development and expansion of community trainings in first aid, health and epidemic education, hygiene education, nutrition station, awareness on sexual and reproductive health, psychosocial support, and integrating some of the risk reduction measures which will enhance the preparedness level at household level. Access to healthcare is one of the leading areas promoting cohesion and could reduce tensions between camp and host communities.

## Water, sanitation, and hygiene (WASH)



**People targeted:** 105,000 people  
 75,000 in camps and 30,000 in host community  
**Requirements:** 15,282,326 CHF  
**Funding gap:** 9,156,189 CHF

The IFRC and BDRCS will continue support to increase access to clean water through different pipe water systems in the camps. The revised appeal will also support the maintenance and upgrading of the latrines and bathing facilities to support protection and dignity for women, girls and at-risk communities in the camps, and the continued operation and maintenance of water and sanitation facilities in the camps, including water quality and faecal sludge management monitoring. A solid

waste management pilot in both displaced and host communities is also planned. Participatory hygiene sessions with a focus on Menstrual Hygiene Management and Acute Watery Diarrhoea prevention will be carried out. Support to improve WASH facilities in the host communities is also planned under this sector, in particular building of latrines.

## 2. Social Inclusion:

Social inclusion covers key interventions to strengthen community engagement, to ensure dignity, access, participation and safety, and to promote community cohesion.

It is recognized that emphasis must be placed on empowering, strengthening the resilience of and engaging with both camp and host communities as equal actors in this crisis; tensions arise most quickly when local people see disparity in treatment by and provisions from humanitarian actors. The predominantly negative narrative towards the displaced population presented by Bangladeshi mainstream media serves to create and reinforce perceived difference and disparities and must be countered by a visibly impartial response along with targeted outreach in areas where the communities co-exist. Transitioning into responding to a protracted crisis and as a mean to reduce violence and tensions, focusing on social inclusion – including PGI and CEA - will be a key element that needs to be mainstreamed into every sector.

### Protection, Gender and Inclusion (PGI)



**People targeted:** 200,000 people from camp community and 60,000 people from host communities (through mainstreaming).

**Requirements:** 6,078,912 CHF

**Funding gap:** 4,056,053 CHF

PGI is a fundamental part of the humanitarian response in this crisis that requires a protection lens to be applied across the response sectors and activities. There will be on mainstreaming protection and inclusion across the response while including targeted interventions where needed. The approach acknowledges the primary role that communities play in their own protection alongside humanitarian actors. The gendered nature of needs, vulnerabilities and capacities of women, girls, boys and men is evident across all sectors requiring careful

attention in the response. The revised appeal will continue to support the three established Dignity, Access, Participation, Safety (DAPS) Centres, as well as the establishment of an additional DAPS centre in the host communities to be used as a community center and which will help the RCRC Movement to engage and establish trust with the host communities. This social investment in the host communities is supported by Islamic Development Bank. The DAPS centres will continue to target the most vulnerable and support their access to safe spaces, helping to mitigate the exposure to protection risks and promote empowerment of the affected community. Skills training, peer to peer counselling and the comfort which comes from sharing and verbalizing experiences are all part of the DAPS experience. The centres are designed to be shared community spaces that promote and enable cohesion at the local level as well as providing specific targeted activities.

### Community Engagement and Accountability (CEA)

CEA is a critical component of the operational strategy in order to build more sustainable capacities of communities, to support positive behaviour and social change, and to help manage people's expectations about the RC/RC Movement. CEA cuts across all objectives and sectors and BDRCS is committed to provide timely, relevant and actionable information to guest and host communities, to foster two-way communication and to promote an environment of greater trust to ensure that target communities can participate and guide all sectoral interventions. The CEA approach includes implementing mechanisms for capturing feedback and complaints and tailoring interventions based on this ongoing engagement and feedback. This is done through inclusive, community based and participatory approaches. Recognizing the challenges relating to illiteracy, limited access to technology, and the lack of trust, the CEA approach places a strong emphasis on face-to-face contact and audio-visual communication, such as outreach by our community volunteers, pictorial information materials and recorded audio messaging.

### Fostering Social Cohesion

The promotion of a culture of non-violence and peaceful societies cannot occur in isolation from the social factors that drive violence. Approaches to promote social harmony within the two communities and to reduce disparity will include ensuring equitable access for both communities to quality resources and services in line with [Better](#)

[Programming Initiative - Do No Harm](#)<sup>4</sup>. BDRCS is also working for the host communities by establishing and strengthening the relation with formal and informal community-based organisations, administrators, leaders and healers for advocacy at host communities as well as people living in camps. This work will further build the community networks for effective preparedness and better risks reduction measures and replicate the learning for reasonable resilience practices from the support of IFRC and partner National Societies. This includes measures aimed at maintaining harmonious relations between the displaced and host communities. In this crisis, IFRC along with BDRCS also engages in advocacy at all levels for the safety and dignity of people.

The recruitment of a social inclusion specialist will be crucial to better understand the context and assess the entry points and help promote cohesion among both communities.

### 3. Readiness for effective response:

International Disaster Management  
**Requirements:** 8,456,902 CHF  
**Funding gap:** 5,477,837 CHF

The Readiness for effective response approach will be further adopted to strengthen BDRCS capacity to respond effectively and efficiently with timely and appropriate actions that meet the needs of those most affected. The revised appeal continues to entail support to BDRCS' readiness to respond to any threat or hazard. This approach promotes the optimization of the cooperation and support to BDRCS to allow Disaster Preparedness/Disaster Management teams to better organize and optimize their support towards the enhancement of national readiness for effective response. This will include preparedness for epidemics along with respective line ministries and partners. BDRCS has practice deploying their national disaster response team (Relief and WASH) in case of emergency. An updated roster of such people is available in BDRCS's Headquarter. This operation has been receiving trained human resources from this roster since the beginning. BDRCS has a regional warehouse in Chittagong where IFRC and partners have prepositioned their stocks from the beginning of this operation.

As an auxiliary to the Government and the only local organization who has presence and access to all 34 camps through the Cyclone Preparedness Program, BDRCS actively participates in several initiatives from the government, UN Agencies and NGOs to promote and influence harmonized DRR approaches, connect with complementary operations in support to the existing Disasters Preparedness and Response Plans at Camps and Union levels. Through this appeal, this disaster preparedness CPP model will be expanded to other hazards at camp level while Cox's Bazar host communities new CPP Units will also be trained as part of strengthening the overall cyclone preparedness system.

The budget figure quoted here includes all the human resources since the beginning of the response and for its continuation. This entails IFRC and BDRCS international and national staff and operational and fixed costs.

### 4. National Society Development

**Requirements:** 2,721,401 CHF  
**Funding gap:** 754,578 CHF

National Society Development is an integral part of the operational strategy. It includes focusing on capacity strengthening as defined in the National Society Development plans at the National Headquarters in Dhaka down to the local branch level in Cox's Bazar. BDRCS has a unique role in Bangladesh since it works as auxiliary to the government of Bangladesh in humanitarian assistance, laying the foundation for a localised response with international connections and support.

Primary outcomes for National Society Development:

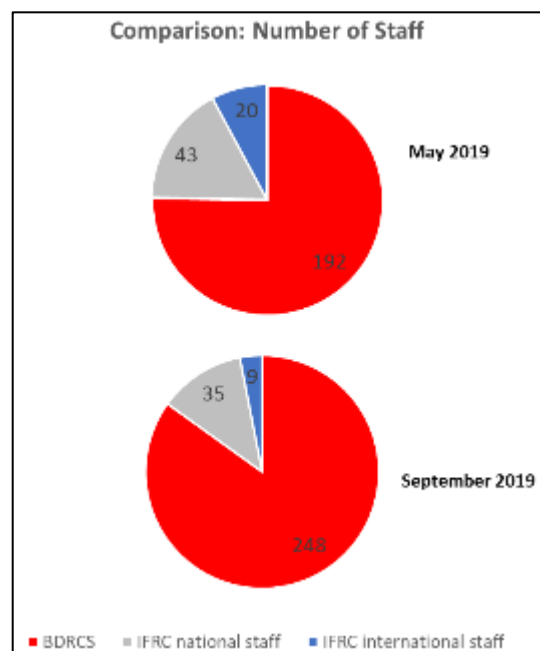
- Financial self-sufficiency through diversified resource mobilization and strong domestic and international partnership
- Comprehensive HR development and system
- Integrated RCY & Volunteers management & development and improved youth engagement system.
- Well-coordinated NSD initiatives at NHQ to branch level
- Enabling environment for planning, monitoring, evaluation and reporting, upholding transparency and accountability of all levels
- Improved logistics and asset management system
- Up-grade of BDRCS infrastructure and facilities to improve the logistics capacity
- Improved financial management and control system

<sup>4</sup> Better Programming Initiative: is an impact assessment tool that supports NS analysis planning and implementation of aid programmes in complex contexts.

- Effective humanitarian diplomacy, advocacy, and networking with Government, Movement and Non-Movement partners and stakeholders to promote a culture of non-violence and peace
- Enhanced National Society and Unit preparedness and response capacity

Partners respect the central role and the mandate of BDRCS and work to strengthen the NS at all times. BDRCS has recently developed a National Society Development plan of action that includes the overall needs giving a specific focus on Cox's Bazar Unit. Some initial support on NSD components has already initiated, which includes capacity building of staff and contribution of the construction of an office building in Dhaka. The initial support of Cox's Bazar unit has been extended. BDRCS HQ has deployed two additional staff to the unit in order to strengthen the management capacity of the unit and expand its coordination role. There will be a focus on strengthening engagement with the local branch in Cox's Bazar especially when working with host communities.

As BDRCS grows its capacity, IFRC has reduced its footprint whilst continuously supporting the transition. The Cox's Bazar unit of BDRCS along with the Red Crescent youth volunteers have been the backbone of the operation since the beginning and have been supporting the response across all sectors with a pool of 270 BDRCS Youth who are active in Cox's Bazar branch. To date, youth volunteers have received training sessions covering topics such as epidemic control for volunteers, hygiene promotion and the combined training for PGI, psychosocial support (PSS) and Restoring Family Links (RFL) have been conducted. The local unit in Cox's Bazar forms part of the host community and will need longer-term support to cope and provide the necessary assistance this operation requires and in case of any other disaster that could affect the guest and host communities. With IFRC support a branch development and a finance dedicated person have been in place to build the capacity of Cox's Bazar unit in link with developed integrated plan of action. A branch development working group is in place formed by partner National Society members, BDRCS unit and IFRC staff in Cox's Bazar. BDRCS is well connected with local authorities and partners due to its special status as stated in presidential decree. BDRCS is also partner to UN agencies and other local partners in this operation. BDRCS is well placed within different forums and levels to be connected with communities and stakeholders.



## 5. Coordination and Accountability:

This revised appeal forms part of the Federation-wide One Window Plan of Action, which outlines a Federation-wide strategy for the longer-term response to this crisis (2019-2023). The Federation-wide Plan also includes a **shared leadership** model that will support the BDRCS and partner National Societies involved in the response to maximize efforts and resources. They can be grouped into the following areas:

- **Knowledge sharing-** through the Planning, Monitoring, Evaluation, Accountability and Learning and Information Management experts to collect and analyze the Federation-wide data to improve the operation and strengthen knowledge through satisfaction surveys, evaluations and constant monitoring.
- **Mapping and facilitating peer support-** setting up of task force groups to share operation information with IFRC regional office and Geneva. The provision of peer support- mentoring and coaching through the deployment of Regional Disaster Response Teams (RDRTs) for continued learning.
- **Strengthening external facing humanitarian collaboration** – Coordination with external organizations and the leading body in country Inter-Sector Coordination Group (ISCG) by participating in sectoral coordination meetings and collaborating in the sharing of information
- **Optimizing Operational Coordination-** Establishing Cooperation Agreements, Operational alliances, Consortia, Global IFRC Surge Tools- ERU, FACT, RDRT, Logistics.

The main adjustments done by sector are focused on “care and maintenance” to continue to the end of the year.

**The transition process has been progressing, in line with the below three phases:**

**Phase 1. January to June 2019**, during this period, most of the delegates ended their mission on June 2019, national job descriptions were finalized and published.

**Phase 2. July to December 2019**, this phase is ongoing, with the implementation of a new working modality, which will be further enhanced during the second semester of 2019 for full implementation starting from January 2020. This phase will serve to finalize the revision of the emergency appeal and include a new operational plan/appeal for the next two years; put in place a marketing plan and at the same time, an intensified action to enhance BDRCS capacities to deliver and support partner National Societies to deliver key humanitarian services through a strong coordination role and financial support in case of need.

**Phase 3. January 2020 onwards:** This phase will be implemented through an extended longer-term plan of action following the integrated approaches mentioned above.

## Budget

*International Federation of Red Cross and Red Crescent Societies*

### EMERGENCY APPEAL

#### *Bangladesh: Population Movement Operation Funding requirements 2017-2021*

<b>DISASTER RISK REDUCTION</b>	<b>11,700,000</b>
<b>SHELTER</b>	<b>19,700,000</b>
<b>LIVELIHOODS AND BASIC NEEDS</b>	<b>3,700,000</b>
<b>HEALTH</b>	<b>14,600,000</b>
<b>WATER, SANITATION AND HYGIENE</b>	<b>15,300,000</b>
<b>PROTECTION, GENDER AND INCLUSION, STRENGTHEN NATIONAL SOCIETY CAPACITIES</b>	<b>6,000,000</b>
<b>ENSURE EFFECTIVE INTER'L DISASTER MANAGEMENT</b>	<b>8,500,000</b>
<b>TOTAL FUNDING REQUIREMENTS 2017-2021</b>	<b>82,200,000</b>

*All amounts in Swiss Francs (CHF)*

**Elhadj As Sy**  
Secretary General

---

Reference documents



Click here for:

- [Previous Appeals and updates](#)
- [Emergency Plan of Action \(EPoA\)](#)

**For further information specifically related to this operation, please contact:**

**In the Bangladesh Red Cross Society**

- Firoz Salahuddin, secretary general; phone: +880 181 145 8500; email: [secretarygeneral@bdracs.org](mailto:secretarygeneral@bdracs.org)
- Syed Ali Nasim Khaliluzzaman, head of operations; phone: +880 181 966 7768; email: [nazmulazam.khan@bdracs.org](mailto:nazmulazam.khan@bdracs.org)
- Joynal Abedin, deputy director of the operation; phone: +880 181 145 8511; email: [joynal.abedin@bdracs.org](mailto:joynal.abedin@bdracs.org)

**In the IFRC Bangladesh Country Office**

- Azmat Ulla, head of country office; phone: +880 171 152 1615; email: [azmat.ulla@ifrc.org](mailto:azmat.ulla@ifrc.org)
- Sanjeev Kafley, head of sub-office; phone: +880 179 458 1877; email: [sanjeev.kafley@ifrc.org](mailto:sanjeev.kafley@ifrc.org)
- Maria Larios, accountability coordinator; email: [maria.larios@ifrc.org](mailto:maria.larios@ifrc.org)

**In the Asia Pacific regional office, Kuala Lumpur**

- Mohammed Omer Mukhier, deputy regional director; email: [mohammedomer.mukhier@ifrc.org](mailto:mohammedomer.mukhier@ifrc.org)
- Necephor Mghendi, head of disaster and crisis; email: [necephor.mghendi@ifrc.org](mailto:necephor.mghendi@ifrc.org)
- Vinod Muniandy, operations coordinator; email: [vinod.muniandy@ifrc.org](mailto:vinod.muniandy@ifrc.org)
- Riku Assamaki, regional logistics coordinator; email: [riku.assamaki@ifrc.org](mailto:riku.assamaki@ifrc.org)

**In IFRC Geneva**

- Nelson Castano, manager, operations coordination; email: [nelson.castano@ifrc.org](mailto:nelson.castano@ifrc.org)
- Tiffany Loh, senior officer, operations coordination; email: [tiffany.loh@ifrc.org](mailto:tiffany.loh@ifrc.org)

**For IFRC Resource Mobilization and Pledges support**

- Alice Ho, partnership in emergencies coordinator; email: [RM.asiapacific@ifrc.org](mailto:RM.asiapacific@ifrc.org)

**For IFRC communications enquiries**

- Ibrahim Mollik, communications manager; mobile: +880 1674330863; email: [ibrahim.mollik@ifrc.org](mailto:ibrahim.mollik@ifrc.org)
- Rosemarie North, communications manager; mobile: +60 12 230 8451; email: [rosemarie.north@ifrc.org](mailto:rosemarie.north@ifrc.org)

**For Performance and Accountability support (planning, monitoring, evaluation and reporting enquiries)**

- Liew Siew Hui, PMER manager; email: [siewhui.liew@ifrc.org](mailto:siewhui.liew@ifrc.org)

## How we work

All IFRC assistance seeks to adhere to the [Code of Conduct](#) for the International Red Cross and Red Crescent Movement and Non-Governmental Organisations (NGOs) in Disaster Relief and the [Humanitarian Charter and Minimum Standards in Humanitarian Response \(Sphere\)](#), in delivering assistance to the most vulnerable. The IFRC's vision is to inspire, **encourage, facilitate and promote at all times all forms of humanitarian activities** by National Societies, with a view to **preventing and alleviating human suffering**, and thereby contributing to the maintenance and promotion of human dignity and peace in the world.

The IFRC's work is guided by Strategy 2020 which puts forward three strategic aims:



**Save lives.**  
protect livelihoods,  
and strengthen recovery  
from disaster and crises.



Enable **healthy**  
and **safe** living.

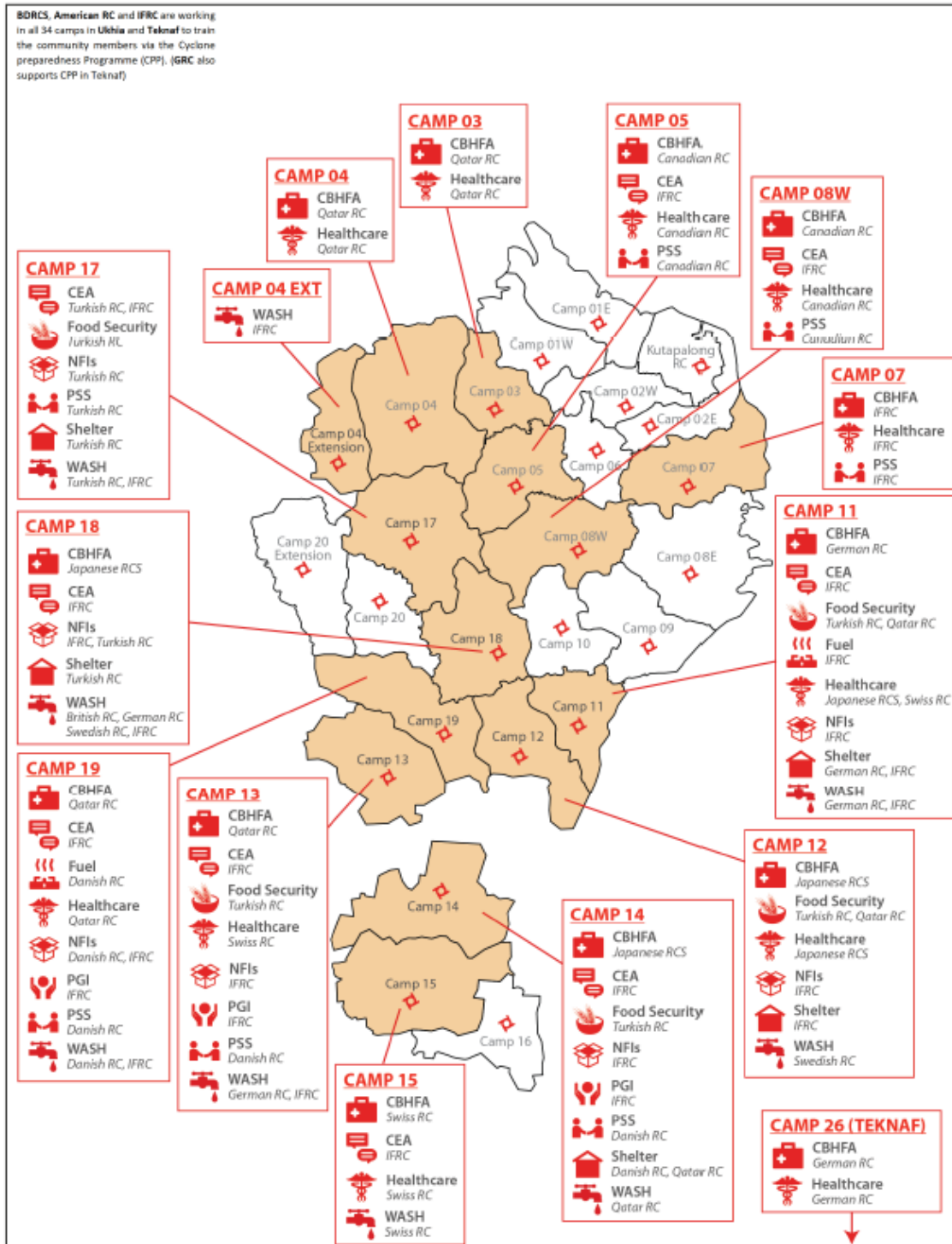


Promote **social inclusion**  
and a culture of  
**non-violence** and **peace**.

Annex 1



**Red Cross Red Crescent 4W**  
**Bangladesh Population Movement Operation**  
 OT-2017-000147-BGD // MDRBD018  
 31 August 2019



The maps used do not imply the expression of any opinion on the part of the International Federation of Red Cross and Red Crescent Societies or National Societies concerning the legal status of a territory or of its authorities. Sources: BDRCS, Partner National Societies, IFRC, ISCG. Produced by IFRC Cox's Bazar Sub-Office.