

## Forecast based Action by the DREF

# Forecast based early action triggered in: [Mongolia and Dzud]<sup>1</sup>

### EAP2019MN001

1,000 families to be assisted

205,643 budget in CHF

## General overview

The Mongolian Red Cross Society (MRCS) has activated its Early Action Protocol for Dzud. The EAP was to trigger if three or more provinces have more than 20 per cent of very high risk in their area in dzud risk map which is developed by National Agency for Meteorology and Environmental Monitoring (NAMEM). In the dzud risk map, as of 2 January 2020, more than 50 per cent of the country identified with dzud risk (21 per cent very high risk, 34 per cent with high risk in terms of dzud) and 25 per cent of the area are in mid-risk (see figure 1) and eight provinces had more than 20 per cent of very high risk coverage in territory, calculated by Red Cross Red Crescent Climate Centre (see table 1). Out of that, in most areas of Khovd, Gobi-Altai, Uvurkhangai, Zavkhan, Arkhangai, Bulgan, Khentii, Sukhbaatar, Dornogobi provinces and some areas of Bayan-Ulgii, Uvs, Bayankhongor, Khuvsgul, Tuv, Dornod, Umnugobi provinces are expected to experience extreme winter continued with deteriorating spring.

MRCS will target eight provinces (Govi-Altai, Khovd, Arkhangai, Bulgan, Uvurkhangai, Sukhbaatar, Khentii, Uvs) which are in white dzud situation according to Government assessment of 12 January, 2020.

MRCS will deliver unrestricted cash assistance and livestock nutrition kits to the 1,000 vulnerable households in the target areas to assist them in meeting their immediate needs and save their livestock and livelihoods. The early action will be completed on 8 March 2020; within two months after the trigger date which is on 8 January 2020.

% of province in very high risk		
Province	11/20/2019	1/2/2020
Bayan-Ulgii	0.03	0.09
Govi-Altai	0.05	0.3
Zavkhan	0.02	0.1
Uvs	0.04	0.1
Khovd	0.15	0.65
Arkhangai	0.08	0.25
Bayankhongor	0.01	0.07
Bulgan	0.2	0.4
Uvurkhangai	0.05	0.35
Khuvsgul	0.04	0.05
Orkhon		0
Dornogovi	0.02	0.1
Dundgobi	0.03	0.5
Umnugobi	0.02	0.1
Selenge	0.01	0.1
Tuv	0.02	0.03
Darkhan-Uul	0	0
Govisumber	0	0
Dornod	0.01	0.04
Sukhbaatar	0.25	0.35
Khentii	0.18	0.2
Ulaanbaatar	0	0

Table 1. Dzud risk map calculation.

<sup>1</sup> This is to inform that the original document has been revised on 20 January 2020. MRCS has agreed on co-operation with FAO where they will take over Dundgovi province (with additional target areas subject to funding confirmation) and carry out the activities as planned by MRCS and also providing assistance to the people in need identified by MRCS. Due to this change MRCS has identified one additional province as their target. This revision has no cost implications.

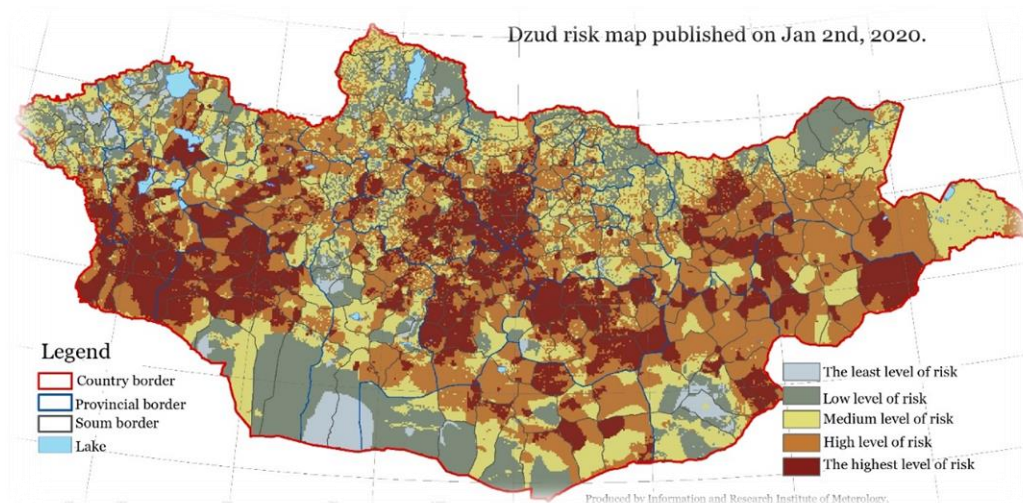


Figure 1. Dzud risk map, January 2nd, 2020.

## Sectors of intervention



### Livelihoods and basic needs

#### Actions:

- Unrestricted cash assistance provided to 1,000 vulnerable herder households to assist them in meeting their immediate needs.
- Livestock nutrition kits are provided to vulnerable herder households additionally to assist them in saving their livestock/livelihoods from dzud.

#### Reference documents

For a more comprehensive description of activities see the [Early Action Protocol summary](#).

#### For further information, specifically related to this operation please contact:

##### In the Mongolian Red Cross Society

- Bolormaa Nordov, secretary general; phone: +976 99119353; email: [bolormaa.n@redcross.mn](mailto:bolormaa.n@redcross.mn)
- Munguntuya Sharavnyambu, disaster management programme manager; phone: +976 99311909; email: [munguntuya.sh@redcross.mn](mailto:munguntuya.sh@redcross.mn)

##### In the Country Cluster Support Team (CCST), Beijing

- Gwendolyn Pang, head of CCST; email: [gwendolyn.pang@ifrc.org](mailto:gwendolyn.pang@ifrc.org)
- Gopal Murkherjee, programme coordinator; email: [gopal.murkherjee@ifrc.org](mailto:gopal.murkherjee@ifrc.org)

##### In the IFRC

- Mohammed Omer Mukhier, deputy regional director; email: [mohammedomer.mukhier@ifrc.org](mailto:mohammedomer.mukhier@ifrc.org)
- Necephor Mghendi, head of disaster and crisis prevention, response and recovery (DCPRR) unit; email: [necephor.mghendi@ifrc.org](mailto:necephor.mghendi@ifrc.org)
- Johanna Arvo, operations coordinator; email: [OpsCoord.EastAsia@ifrc.org](mailto:OpsCoord.EastAsia@ifrc.org)
- Raymond Zingg, regional FbF advisor; email: [Raymond.zingg@ifrc.org](mailto:Raymond.zingg@ifrc.org)
- Rosemarie North, communications manager; email: [rosemarie.north@ifrc.org](mailto:rosemarie.north@ifrc.org)
- Siew Hui Liew, PMER manager; email: [siewhui.liew@ifrc.org](mailto:siewhui.liew@ifrc.org)

##### In IFRC Geneva

- Nazira Lacayo, senior officer, DREF forecast based Action (FbA); email: [nazira.lacayo@ifrc.org](mailto:nazira.lacayo@ifrc.org)