

Operation Update Report

Philippines: Tropical Storm Kammuri

DREF n° MDRPH037	Glide n° TC-2019-000159-PHL
DREF operation update n° 2; Date of issue: 7 December 2019	Timeframe covered by this update: 7 December 2019
Operation start date: 30 November 2019	Operation timeframe: Four month; End date: 6 March 2020
Funding requirements (CHF): DREF allocation amount: CHF 360,404 (Imminent DREF CHF 47,118 included)	
N° of people being assisted: 20,000	
Host National Society: Philippine Red Cross	
Red Cross Red Crescent Movement partners currently actively involved in the operation: PRC will lead the overall response operation. This action is supported by the International Federation of Red Cross and Red Crescent Societies (IFRC).	
Other partner organizations actively involved in the operation: Government preparedness for the response is being coordinated through the National Disaster Risk Reduction and Management Council (NDRRMC) of which PRC is a member. Other Government agencies are involved including the Department of Social Welfare and Development (DSWD), Department of Health and Department of Education. The humanitarian sector response readiness is being coordinated by the Humanitarian Country Team (HCT) via OCHA.	

Summary of major revisions made to emergency plan of action:

This update is being issued for information only and reflects the revised plan of action for the operation where:

- *second allocation of CHF 313,286 has been approved; hence total amount of the DREF is CHF 360,404 (Imminent DREF of CHF 47,118 included).*
- *Operation timeframe has been extended from one month to four months ending on 6 March 2020.*
- *A total of 20,000 people (5,000 families) will be supported through the provision of appropriate assistance including: essential household items and emergency shelter, multi-purpose cash grants, health (including first aid, and psychological support), water, sanitation and hygiene; and welfare services.*
- *Detailed revised operational strategy and plan of action are attached at the end of this brief update.*

A. SITUATION ANALYSIS

Description of the disaster

Typhoon Kammuri (locally named Tisoy), entered Philippine Area of Responsibility during the afternoon of 30 November 2019, before making landfall at approximately 23:00 hrs (local time) over Gubat municipality, Sorsogon province in Bicol Region. At its maximum it has packed winds of up to 213 kmph (Category 4) and gusts over 230 kmph. Typhoon Kammuri has left a trail of destruction and escalating humanitarian needs across Region IV-A (CALABARZON), Region IV-B (MIMAROPA), Region V (Bicol) and Region VIII (Eastern Visayas) of the Philippines. [Tropical Cyclone Wind Signal \(TCWS\) #3](#)¹ have been in place across many provinces of Luzon, along with TWS #1 and #2 raised in numerous other areas.

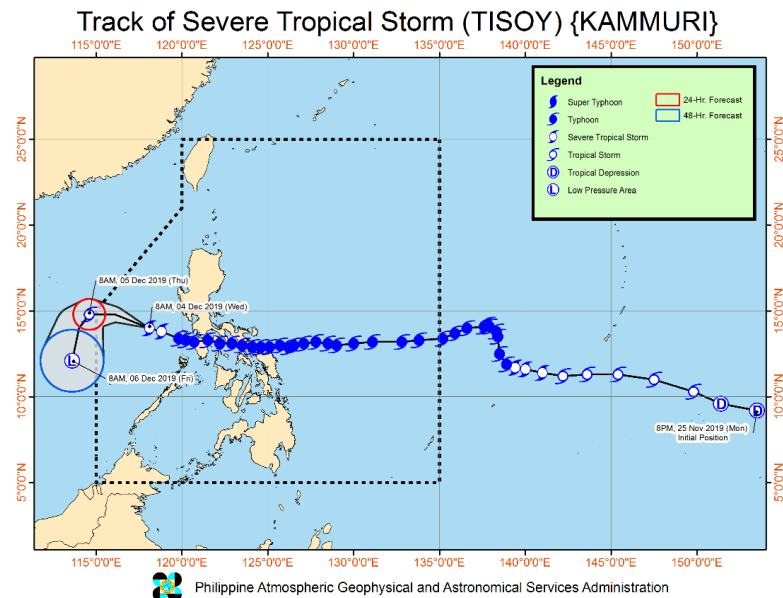
Typhoon Kammuri has brought violent winds and intense rainfall to the provinces of Albay, Camarines Norte, Camarines Sur, *Catanduanes*, Masbate and Sorsogon in Bicol Region, as well as Northern Samar in Eastern Visayas. Storm surges have reached more than three metres in some coastal areas.

It has made the following landfalls as it traversed across Luzon and surrounding islands. see below table:

¹¹ TCWS #3 indicates the potential for winds up to 170kph, and damage to buildings, crops, houses and disruption to power supply.

#	Date/Time	Location of landfall		
		Municipality	Province	Region
1	02/12/2019; 23:00	Gubat	Sorsogon	Region V (Bicol)
2	03/12/2019; 04:00	San Pascual, Burias Island	Masbate	Region V (Bicol)
3	03/12/2019; 08:30	Torrijos	Marinduque	MIMAROPA
4	03/12/2019; 12:30	Naujan	Oriental Mindoro	MIMAROPA

As of 4 December 2019, Kammuri has since reduced in strength to a “Severe Tropical Storm. and currently moving West Northwest at 25kph; and is expected to leave PAR between 4 and 5 December 2019. As of 04:00 hrs (local time) on 4 December 2019, the centre of Kammuri is located 275km West Northwest of Oriental Mindoro, or 195km West Southwest of Zambales



According to the National Disaster Risk Reduction and Management Council (NDRRMC) [latest bulletin](#), 123,912 families (495,408 people) have been affected; of which 114,552 families (458,020 people) are inside evacuation centres, and 9,360 families (37,388 people) are outside evacuation centres. At least 10 people have been reported killed.

Though the full extent of the damage is continuing to emerge, there have already been reports of considerable damage to properties, with 38 houses damaged (18 totally, and 20 partially). These figures expected to rise exponentially as more information becomes available. A total of 203 areas have experienced power supply disruptions, cell phone networks interruption, while domestic flights (329), international flights (192), businesses (231 municipalities) and schools (865 municipalities) have been closed. The Ninoy Aquino International Airport in Metro Manila was closed from 11:00 to 23:00 hrs (local time) on 3 December 2019. The heavy rains have led to ground flooding in eight areas, with flash floods and landslides now increasingly possible. Roads and bridges are impassable in some municipalities, which is reducing access and slowing data collection.

The [Global Disaster Alert and Coordination System](#) (GDACS) raised its impact score to “RED” (2.5 out of 3) and forecast the expected level of humanitarian impact (of the typhoon) as “HIGH”.

Typhoon Kammuri is the 20th tropical cyclone to strike the Philippines in 2019; and comes as the authorities and partner organizations are already responding to emergencies related to public health (measles and polio, MDRPH032) and earthquakes (Mindanao, MDRPH036).

Summary of the current response

Overview of Host National Society response action

In accordance with Philippine Red Cross (PRC) Standard Operating Procedures (SOP), the Operations Centre (OpCen), which functions 24/7, has been monitoring Typhoon Kammuri since it was identified as incoming to the Philippines, and has been issuing regular updates on the situation as it has evolved.

Before Typhoon Kammuri made landfall, the PRC undertook actions to prepare for the storm's potential impact, this included supporting local government with preventative evacuation in high risk areas, mobilization of assets, stocks and personnel as well as pre-positioning of essential household and emergency shelter items in strategic locations.



The PRC chapters affected have coordinated with respective LGU's (local government unit) on regional / provincial RDRA (Pre-Disaster Risk Assessment) meetings and activated community volunteers (Red Cross 143) and Red Cross Action Teams (RCAT 143) in all municipalities. Fifteen chapters have prepared initial relief items for possible distribution in evacuation centres, other logistic equipment and teams for response. The PRC NHQ has advanced approximately CHF 30,000 from its Emergency Relief Fund to chapters in the affected areas to enable them to provide first aid management, psychosocial support (PSS), search and rescue and welfare services.

On 30 November 2019 an imminent crisis DREF allocation was approved to support PRC to mobilize essential household items, early action activities and mobilization of volunteers and staff to conduct rapid needs assessment.

On 2 December 2019, the PRC National Headquarters (NHQ) has raised alert level to "YELLOW" and held an executive meeting to plan for the activities to be undertaken after landfall. A total of 41 personnel were deployed with specialisms in communications, logistics, relief, search and rescue, telecoms, WASH and welfare. They are being supported by 11 vehicles comprising ambulances, food trucks, rescue boats/trucks, service vehicles, and water tankers etc. PRC are also supporting many families that have been stranded at seaports with hot meals and welfare services.

Regional Warehouses including in Batangas, Mandaluyong and Subic have been activated. Essential household items, shelter, WASH and health items comprising blankets, hygiene kits, jerry cans, mosquito nets, sleeping mats and tarpaulins for 1,500 families were dispatched on 30 November and are now in North Samar waiting for their final destination to be confirmed, based on rapid assessments. Emergency Response Units (ERU) for disaster relief, health, water and sanitation, search and rescue and welfare have all been activated; as have National Disaster Response Teams (NDRT). The PRC Communications teams has been posting updates and photos of the situation on [Facebook](#) and [Twitter](#).

Complementing this operation, PRC, with the support of German Red Cross, implemented early actions which are part of a Forecast-based Financing (FbF) project for response to typhoons. These have been conducted in Camarines Norte and Catanduanes provinces in Region V (Bicol). A total of 37 workers were mobilized (Cash-for-Work) to conduct early harvesting and evacuation of livestock in seven barangays. Additionally, household strengthening kits, which were remaining from a previous activity have been used to reinforce 12 houses in two barangays in Camarines Norte province. Please refer to the article on the German Red Cross FbF Website for more information: [Typhoon Kammuri \(Tisoy\) approaching the Philippines](#).

In 2019, PRC has been managing operations supported through the IFRC DREF and Emergency Appeal (EA) mechanisms in response to earthquakes (Batanes, Mindanao), typhoon (Mangkhut) and disease outbreaks (dengue, measles and polio).

Overview of International Red Cross Red Crescent Movement actions in country

PRC will lead the overall response operation. PRC maintains close coordination with in-country Movement partners and continues to provide updates. In addition to the IFRC, a significant number of Movement partners are present in the country: International Committee of the Red Cross (ICRC), American Red Cross, Canadian Red Cross, Finnish Red Cross, German Red Cross, Japanese Red Cross Society, the Netherlands Red Cross, Spanish Red Cross and Qatar Red Crescent Society.

PRC host Movement coordination meetings and operational meetings to share information with partners. IFRC Philippine Country Office (CO) is supporting PRC in disseminating updates to Movement partners in-country and coordinating with the IFRC Asia Pacific Regional Office (APRO) in Kuala Lumpur in accordance with the IFRC Secretariat's Emergency Response Framework. IFRC CO and PRC are also coordinating closely with ICRC on security. The IFRC Philippine CO

has assisted in the preparation of an imminent DREF activation of CHF 47,119 (approved on 30 November 2019), which enabled PRC to prepare for Typhoon Kammuri as it entered PAR (the Philippine Area of Responsibility).

Netherlands Red Cross-supported [510 initiatives](#) has continued to prepare maps, containing information on where the weather system will impact; and expected level of damage. These have been shared with RCRC Movement and Non-Movement partners.

Overview of non-Red Cross Red Crescent actors' actions in country

Coordination with the authorities

Republic Act 10072 (Philippine Red Cross Act of 2010) recognizes PRC as an independent, autonomous, non-governmental organization auxiliary to the authorities of the republic of the Philippines in the humanitarian field.

As an auxiliary to the public authorities, PRC maintains a strong relationship and collaboration with (i) NDRRMC; (ii) provincial, municipal and barangay (village) disaster risk reduction and management councils; and (iii) local government units defined in the Disaster Risk Reduction and Management Act. PRC participates in NDRRMC meetings and coordinates with the DSWD and Department of Health (DOH).

Inter-agency coordination

At country level, PRC and IFRC are observers to, and participate in, meetings of the Humanitarian Country Team (HCT). PRC and IFRC are involved in relevant government-led cluster information sharing, planning, and analysis at all levels while IFRC supports PRC coordination efforts through representation in other relevant clusters as required.

IFRC is co-lead of the Shelter Cluster with government lead agency Department of Social Welfare and Development (DSWD). The IFRC coordination focal point in country is coordinating with PRC, OCHA and sector partners on inter-agency rapid needs assessments in the affected areas.

Needs analysis, targeting, scenario planning and risk assessment

Needs analysis

According to situation report no.8 issued by [NDRRMC](#), the following is the quantitative impact data at this time:

- Total 123,912 families (495,408 people) have been affected in Regions III (Central Luzon), V (Bicol), IV-B MIMAROPA and VIII (Eastern Visayas); of which 114,552 families (458,020 people) are inside evacuation centres, and 9,360 families (37,388 people) are outside evacuation centres.
- 3,300 passengers remain stranded at various ports.
- 12 road sections, and three (3) bridges remain impassable.
- 38 houses were damaged (20 totally and 18 are partially damaged).
- 85 municipalities have suspended school classes; and 231 have suspended businesses.

From 3 December 2019, PRC deployed Rapid Damage and Needs Assessment (RDANA) Teams (comprising NDRTs and RCATs). Key results and findings from the assessment are currently pending; but will be used to inform the overarching PRC Plan Action, including the funding required for the response.

Consideration has been given to the other most recent typhoons that affected these areas and to which PRC responded, supported by IFRC: Typhoon Melor (2015, [MDRPH020](#)), Typhoon Nock-Ten (2016, [MDRPH023](#)) and Tropical Storm Usman (2019, [MDRPH030](#)). Tropical Storm Usman this year (2019) was characterized by multiple landslides, caused by flooding, which accounted for most of the casualties with 156 dead reported. Accordingly, the following are expected as priority needs: essential household and emergency shelter items, first aid and psychosocial support, protection, water, sanitation and hygiene (WASH).



At this time, based on the current understanding of the impact and experience of the areas, PRC are prioritising the Provinces of Camarines Norte, Camarines Sur and Albay. PRC are also considering as a priority the island Provinces of Masbate and Marinduque and parts of Mindoro. Information is continuing to come in, as assessment teams are mobilized. Further analyses of needs will be provided in the coming hours and days.

Shelter

In the Provinces of Albay, Camarines Norte, and Camarines Sur, around 271,853 homes are made of entirely of light or salvaged materials, making them less able to withstand impact of the Typhoon Kammuri. At this time, available data on shelter damage is limited, with NDRRMC reporting 38 houses damaged/destroyed. This is expected to rise considerably as the results from assessments come in. There will be a need to support affected families meet their emergency shelter needs (shelter grade tarpaulins), as well as undertake repairs or rebuild their homes. Orientation and guidance on safer construction techniques is required. Flooding caused by the intense rainfall associated with Kammuri can also be expected to have resulted in affected families losing essential household items, such as blankets, sleeping mats etc. which will now need to be replaced.

Livelihoods and basic needs

NDRRMC has reported that nearly 124,000 families (495,000,000 people) have been displaced; and are currently staying in evacuation centres. They will be a need to provide them with food assistance, while they await being able to return to their homes. In the Provinces of Albay (25 per cent), Camarines Norte (36 per cent) and Camarines Sur (35 per cent), more than a quarter of the population were already living as below the poverty threshold, and it can be expected that the typhoon will have had a negatively impacted their livelihoods, leaving them in need of immediate cash transfers to help them meet their basic needs. Based on the current understanding of impact, and experience of previous operations in the affected areas, it is expected that market will be operational three days after the typhoon and will allow for cash and or commodity voucher interventions. The impact of Typhoon Kammuri has affected livelihoods including agriculture, however, the extent of the damage is not yet available, but this will be assessed in coordination of with the Ministry of Agriculture. According to the Office of Civil Defence, there has been losses of approximately CHF 12.9 million in the agricultural sector, with most damages caused to the coconut industry. A total of 1,200 hectares of rice (value CHF 1.4m) has also been destroyed, while there has been damage to banana, cacao and vegetable crops. Fishing boats and ponds have also been affected.

Health (including psychosocial support)

Even before the arrival of Typhoon Kammuri, the public health services were already stretched – with on average of 2.2 health facilities (hospitals, rural health clinics and barangay health stations) available per 10,000 people in the Provinces of Albay, Camarines Norte and Camarines Norte. These have been disrupted in some areas, including neonatal and maternal support, leaving the affected population with reduced access to essential services. Search and rescue and first aid (FA) will also continue to be required in the coming days as rains associated with the typhoon leads could lead to flash floods and landslides, there will be an ongoing need for search and rescue, as well as the provision of first aid (FA) services to the sick and injured.

Flooding and displacement also raise the vulnerability of affected communities to disease outbreaks such as leptospirosis, dengue, acute respiratory infections and diarrhoea especially children and vulnerable population. Disease prevention, surveillance and hygiene promotion will be needed in affected communities and evacuation centres to prevent outbreaks; while insecticide-treated mosquito nets required as a preventative measure. The impact on people's psychosocial well-being will also need to be considered, as they may have lost loved ones, or seen their homes and livelihoods destroyed. Therefore, psychosocial first aid (PFA) and psychosocial support (PSS) will be required.

Water, sanitation and hygiene (WASH)

Water supply systems have been damaged and/or contaminated leaving the affected families without reliable access to safe water. There will be a need to ensure water treatment, storage and distribution facilities are installed, and as water storage containers (jerry cans) are provided, especially for those families that have been displaced and are staying in the evacuation centres. It may also be necessary to install toilets, shower or washing facilities and handwashing in the evacuation centres. Contamination of water sources resulting from damage to sanitation facilities increases the risk of waterborne disease; and there may be a need for cleaning campaigns in the worst affected communities. This will be determined by the results of the rapid needs assessment. Emergency dissemination of information on personal hygiene, menstrual hygiene, prevention of diarrhoea, solid waste management and water storage will also be required. Hygiene items may have been lost during flooding and/or landslides, need to be replaced/replenished.



Protection, gender and inclusion (PGI)

Following disasters, protection concerns, particularly regarding separated and unaccompanied children, and young women are known to increase. Vulnerable groups are at risk to exploitation, psychosocial trauma and gender-based violence (GBV). Housing units of host families may have limited access to basic facilities that are safe for women and children. Addressing such risks are to be incorporated in the response plans and in the messaging and community engagement of the PRC. There will be a need to ensure that mapping of local child protection services and GBV referral systems is carried out and information provided to affected households. Additionally, family tracing and reunification processes for unaccompanied, separated and orphaned children, provision of PSS services for children, as well as set up of child-friendly spaces where they have opportunities for safe play, recreation and non-formal education, have also been identified as a priority need.

PGI minimum standards will be used to ensure a do no harm approach, and elaborate on how the mitigation approach will (ideally) include establishment of protection referral pathways, training and sensitisation of staff and volunteers to identify and refer protection concerns, and safeguarding in the operation (such as signing the Code of Conduct and Child Protection policy) for all staff and volunteers

Community engagement and accountability (CEA)

As stated from the [IFRC World Disasters Report](#), information is a vital form of aid. Timely, accurate and appropriate information can save lives, livelihoods and resources. With various concerns arising after the typhoons, ensuring that information in the local language is immediately provided to the affected families is significant to lessen the negative impacts and ensure that the most vulnerable can access government and non-government assistance.

PRC has been strengthening its capacity in community engagement and accountability through a variety of community-based programmes and projects, as well as emergency operations nationwide. Community accountability and feedback/response mechanisms are integrated into relief and recovery programmes to ensure that affected populations have direct access to information on the nature and scope of services provided by PRC, as well as the mechanisms and processes that enable community participation and feedback. It is important to incorporate sustainable behaviours and practices within this operation. Actions taken should cause no harm to the communities being supported.

PRC uses trusted and preferred channels of communications, including radio, newspaper, telephone hotline, help desks, printed materials, SMS and social media. The preferred media for communication is validated through community consultations. These media are utilized to provide and receive information to and from beneficiaries. The "[Virtual Volunteer](#)" web app could also be utilized to exchange information, such as where affected families can receive assistance.

Green response

The Philippines is prone to floods, drought, typhoons, seismic and volcanic events. As part of PRC strategic plan; awareness, sustainable development, ecological transition and partnerships are key priorities needed to incorporate "Green Response". These responses should respect the values and principles which can help minimize the impact of humans on the environment and thus facilitate sustainable development. With the help of active partner agencies and other PNS, PRC can identify which ecological products and processes are likely to be used in emergencies, interventions following disasters, recovery, disaster risk reduction and short/long term developments (relief distribution, CTP, shelter and livelihoods). "Green Response" approach will be considered in the design and implementation of activities under this operation.

Targeting

Estimated disaggregated data for population targeted

PRC ensures that its responses and programmes are aligned with its own as well as IFRC's commitment to take into account gender and diversity, for example, putting focus on and targeting women/child-headed households, pregnant or lactating women, and men, women and children made vulnerable by disasters; families with persons with disability, elderly, those suffering from chronic illnesses, families with children under five years old, families that have not received any or sufficient assistance from the government or other organizations, those belonging to the socially vulnerable families and those who lack the resources to deal with basic humanitarian needs alone.

Once beneficiaries are identified and verified in coordination with the community and or Barangay leaders, each will be provided with a PRC beneficiary card with their and family members' names. The card will form the basis for official recognition of bearers as beneficiaries of the PRC and during implementation, PRC volunteers will again validate the beneficiaries' names on the cards where they are listed in distribution sheets. Upon receipt of any item or assistance, beneficiaries will sign award sheets or participating lists. With these records and validation process, cases of double-assistance or double-counting can be eliminated.

For the early actions under the imminent crisis DREF; recipients of Cash-for Work support have been drawn from members of the targeted communities themselves to support activities such as early cropping and evacuation of

livestock. These were identified by local barangay authorities in collaboration with PRC and German Red Cross. For other cash assistance, affected families will be targeted based on the above process.

For this DREF operation, PRC will focus on targeting the most vulnerable groups identified during the rapid need assessment. These groups will be considered as 'red' according to the level of impact experienced due to Typhoon Kammuri, their level of vulnerability and coping capacity. Geographical areas targeted under this operation are Provinces in Region V (Bicol) which has been worst affected by Typhoon Kammuri. This includes the Provinces of Albay, Camarines Norte, and Camarines Sur. PRC are also considering as a priority the island Provinces of Masbate and Marinduque and parts of Mindoro. As more information becomes available on the impact of the typhoon, and more needs are identified, it may be necessary to change the targeting, and include other provinces and groups within the affected population. Based on 2015 [PSA](#) data, sex and age breakdown in Bicol Region is as follows:

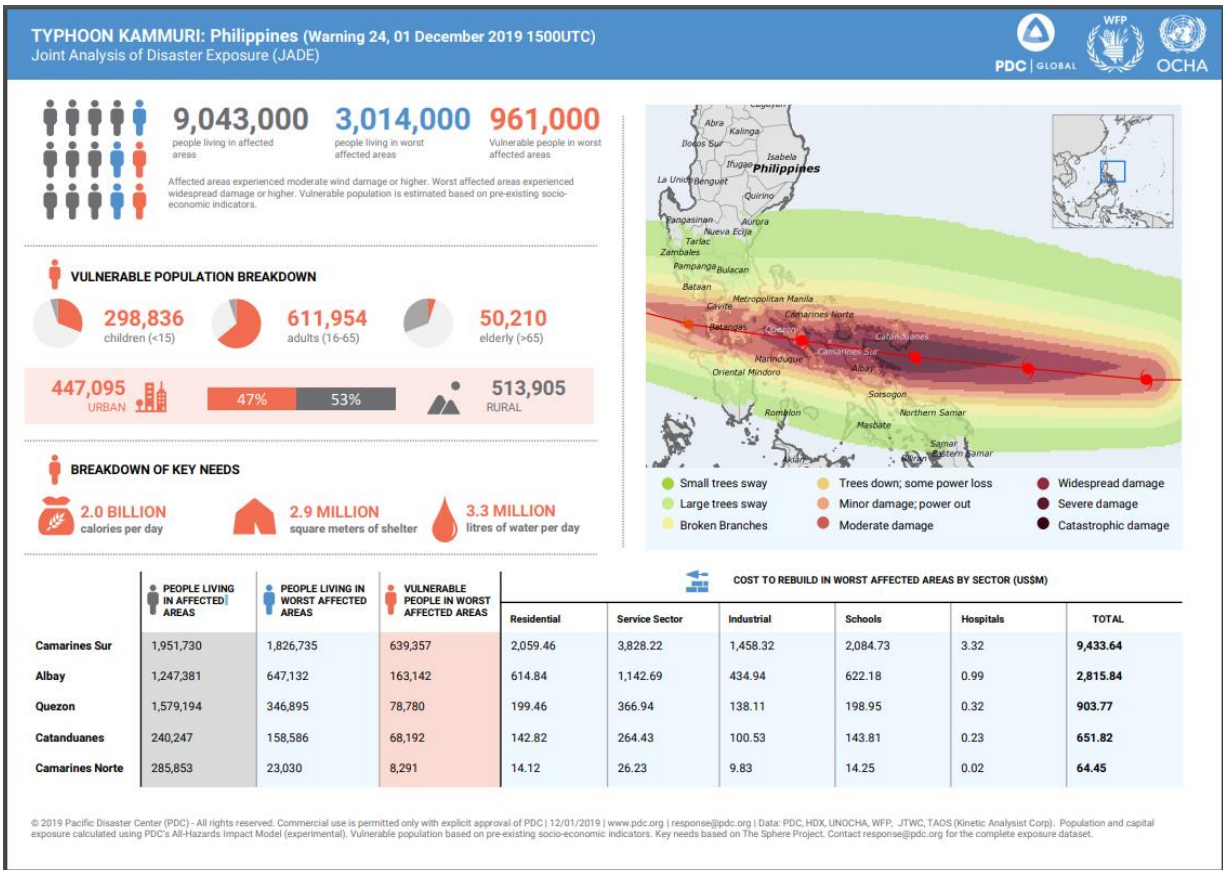
Category	Estimated % of target group	% female	% male
Young Children (under 5 years)	11.8%	5.7%	6.2%
Children (5-17yrs)	31.3%	15.1%	16.2%
Adults (18-49 yrs)	41.3%	20.1%	21.3%
Elderly (>50 yrs)	15.5%	8.2%	7.2%
People with disabilities	1.85 ² %	n/a	n/a

Multi-dimensional vulnerability of the targeted provinces

Socio-economic and Vulnerability indicators	Albay	Camarines Norte	Camarines Sur
Population	1,312,748	581,809	1,952,544
Population (Households)	277,127	116,728	400,615
Humanitarian Development Index	0.54	0.52	0.54
Poverty incidence %	25%	36%	35%
% of 4Ps ³ member	5.9%	5.6%	5.8%
# homes with roof/walls made from light/salvaged materials)	83,194	46,453	142,306
# families that do not have access to enough, safe and nutritious food at all times (food insecurity)	n/a	n/a	n/a
% children 0-60 months that are stunted/underweight/wasted	14.9%	13.6%	18.2%
# health facility per person (per 10,000)	2	2.5	2.2

² Based on 2010 PSA data.

³ Pantawid Pamilyang Pilipino Program or 4Ps is a human development program of the national government that invests in the health and education of poor households, particularly of children aged 0-18 years old. Patterned after the conditional cash transfer scheme implemented in other developing countries, the 4Ps provides cash grants to beneficiaries provided that they comply with the set of conditions required by the programme.



Multi-dimensional Vulnerability and Capacity Matrix

The below table presents the multidimensional variables that influence the level of vulnerability and coping capacity of families living in the typhoon affected areas, namely CALABARZON, MIMAROPA, Region V (Bicol), Regional VIII (Eastern Visayas). The HDI ([Human Development Index](#)) of between 0.64 and 0.78 reflects a low level. Similarly, the locations have a poverty incidence which indicates that almost 1.3 million families (5.8 million people) have per capita annual income or expenditure less than per capita poverty threshold. Overall, it shows that families from these locations were vulnerable in terms of socio-economic condition before the typhoon and it can be assumed that this disaster is leading them towards increased vulnerability.

Socio-economic and Vulnerability indicators	Region IV-A CALABARZON	Region IV-B (MIMAROPA)	Region V (Bicol)	Region VIII (Eastern Visayas)
Population (Millions)	14,414,744	2,963,360	5,796,989	4,440,150
Population (Households)	3,404,958	682,668	1,216,421	985,913
Humanitarian Development Index	0.74	0.64	0.68	0.68
Poverty incidence %	9.10%	24.40%	36.00%	38.70%
# homes with roof/walls made from light/salvaged materials)	139,603	206,848	363,710	173,521
# families that do not have access to enough, safe and nutritious food at all times (food insecurity)	544,793	498,348	948,808	729,576
% children 0-60 months that are stunted/underweight/wasted	49.00%	73.00%	70.00%	76.00%
# persons per health facility	4,403	2,328	3,530	3,891
# persons per medical practitioner	1,271	2,121	1,300	1,629

Scenario planning

Scenario	Humanitarian consequence	Potential Response
Rapid needs assessments confirm more extensive damage than anticipated, and the response required exceeds the resources available through the DREF.	Medium/High	Expand the operation under an Emergency Appeal with the inclusion of early recovery activities over a longer period. Consider mobilization of additional rapid response personnel to expand the operation

More weather disturbances will impact the same geographical areas affected by Typhoon Kammuri causing increased flooding and landslides.	High	<p>Continuous monitoring of weather systems and contingency planning with PRC chapters in the affected areas so that activities can be initiated as quickly as possible to lessen the impact possible typhoon conditions.</p> <p>Expand the operation under an Emergency Appeal with the inclusion of early recovery activities over a longer period.</p>
--	------	---

Operation Risk Assessment

Possible operational risks are shown below:

- There is potential for more weather disturbances, which could lead to flooding and increase the risk of land and rockslides, exacerbating the humanitarian situation for the affected families. This could also result in issues if bridges and roads become blocked.
- Security risk posed by armed non-state actors in the areas most likely to be affected is regarded as low to medium, and not expected to impact on the implementation of the DREF operation or access by IFRC/PRC personnel. PGI minimum standards will be used to ensure a do no harm approach, and elaborate on how the mitigation approach will (ideally) include establishment of protection referral pathways, training and sensitisation of staff and volunteers to identify and refer protection concerns, and safeguarding in the operation (such as signing the Code of Conduct and Child Protection policy) for all staff and volunteers.

B. OPERATIONAL STRATEGY

Click [here](#) for Revised Operational Strategy.

C. DETAILED OPERATIONAL PLAN

Click [here](#) for Revised Detailed Operational Plan.

D. Financial Report

Revised budget:

International Federation of Red Cross and Red Crescent
Societies

all amounts in
Swiss Francs
(CHF)

DREF OPERATION

MDRPH037 Philippines Typhoon KAMMURI
(TISOY)

4/12/2019

Budget by Resource

Budget Group	Budget
Shelter - Relief	39,000
Construction Materials	1,935
Clothing & Textiles	24,630
Food	3,338
Water, Sanitation & Hygiene	55,598
Medical & First Aid	2,264
Utensils & Tools	6,000
Cash Disbursement	90,945
Relief items, Construction, Supplies	223,709
Transport & Vehicles Costs	15,916
Logistics Services	9,675
Logistics, Transport & Storage	25,591
International Staff	6,000
National Society Staff	17,038
Volunteers	36,609
Personnel	59,647
Professional Fees	4,354
Consultants & Professional Fees	4,354
Workshops & Training	5,750
Workshops & Training	5,750
Travel	14,513
Information & Public Relations	1,403
Office Costs	1,181
Communications	1,761
Financial Charges	500
General Expenditure	19,357
DIRECT COSTS	338,408
INDIRECT COSTS	21,997
TOTAL BUDGET	360,404



Click here for:

- [Imminent REF Operation](#)

For further information, specifically related to this operation please contact:

In the Philippine Red Cross

- Elizabeth Zavalla, secretary general; email: elizabeth.zavalla@redcross.org.ph
- Leonardo Ebajo, director for disaster management services; email: leonardo.ebajo@redcross.org.ph

In the IFRC Philippine Country Office

- Patrick Elliott, head of country office (acting); phone: +63 998 961 2140; email: patrick.elliott@ifrc.org
- David Fogden, operations manager (acting); phone: +63 939 333 6874; email: david.fogden@ifrc.org
- Rajeev KC, surge disaster management delegate; phone: +63 998 961 213; email: rajeev.kc@ifrc.org

In IFRC Asia Pacific Regional Office, Kuala Lumpur

- Mohammed Omer Mukhier, deputy regional director; email: mohammedomer.mukhier@ifrc.org
- Necephor Mghendi, head of disaster and crises unit; email: necephor.mghendi@ifrc.org
- Nur Hayati Ahmad, Operations Coordinator; email: OpsCoord.SouthEastAsia@ifrc.org
- Riku Ässämäki, logistics coordinator, email: riku.assamaki@ifrc.org
- Rosemarie North, communications manager; email: rosemarie.north@ifrc.org

In IFRC Geneva

- Tiffany Loh, senior officer, operations coordination; email: tiffany.loh@ifrc.org
- Karla Morizzo, DREF senior officer; email: karla.morizzo@ifrc.org

For IFRC Resource Mobilization and Pledges support:

- In IFRC Asia Pacific Regional Office: Alice Ho, resource mobilization in emergencies coordinator; email: alice.ho@ifrc.org

For Performance and Accountability support (planning, monitoring, evaluation and reporting enquiries)

- Fadzli Saari, acting PMER manager; email: fadzli.saari@ifrc.org

How we work

All IFRC assistance seeks to adhere to the **Code of Conduct** for the International Red Cross and Red Crescent Movement and Non-Governmental Organizations (NGO's) in Disaster Relief and the **Humanitarian Charter and Minimum Standards in Humanitarian Response (Sphere)** in delivering assistance to the most vulnerable. The IFRC's vision is to inspire, **encourage, facilitate and promote at all times all forms of humanitarian activities** by National Societies, with a view to **preventing and alleviating human suffering**, and thereby contributing to the maintenance and promotion of human dignity and peace in the world.

The IFRC's work is guided by Strategy 2020 which puts forward three strategic aims:



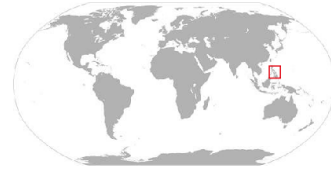
Save lives.
protect livelihoods,
and strengthen recovery
from disaster and crises.



Enable **healthy**
and **safe** living.

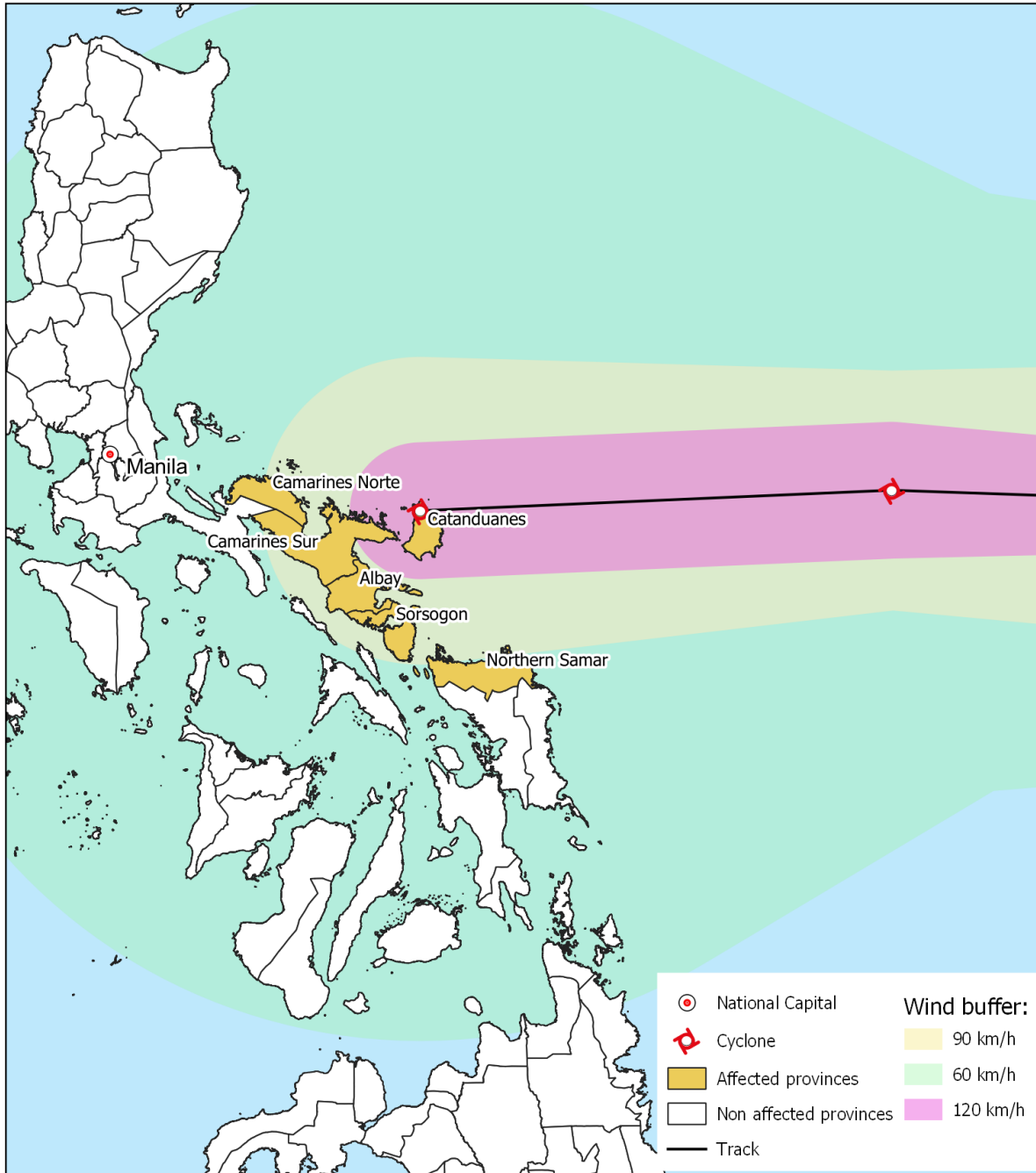


Promote **social inclusion**
and a culture of
non-violence and **peace**.



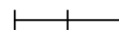
**Philippines: Tropical Storm Tisoy
Emergency Plan of Action (EPoA)**

29 November 2019



The maps used do not imply the expression of any opinion on the part of the International Federation of the Red Cross and Red Crescent Societies or National Societies concerning the legal status of territory or its authorities. Map data sources: OCHA, OSM Contributors, ICRC, IFRC, GDACS

0 50 100 km



Annexes: Revised Operational Strategy and Detailed Operational Plan

B. Operational strategy

Overall Operational objective

An imminent crisis DREF allocation was approved on 30 November 2019 for one month to support PRC to mobilize essential household items, early action activities and mobilization of volunteers and staff to conduct rapid needs assessment.

Subsequent to the findings on the ground, this DREF operation aims to meet the immediate needs of the most vulnerable of the population that have been affected by Typhoon Kammuri (Total 20,000 people / 5,000 families) through the provision of appropriate assistance including: essential household items and emergency shelter, multi-purpose cash grants, health (including first aid, and psychological support), water, sanitation and hygiene; and welfare services. This will be accomplished over a period of four months (until 31 March 2020).

This DREF operation incorporates both the actions undertaken as an imminent crisis activation and the activities planned under the required emergency response phase following the impact of Typhoon Kammuri.

Summary of proposed strategy:

Imminent crisis

- Support local governments preventative evacuations from high risk areas.
- Support the evacuation of people and their livestock and early harvesting of crops (where appropriate).
- Pre-positioning of essential household items, shelter, WASH and health items for 1,500 families to Albay Chapter - mobilized from Cebu warehouse.
- Support the mobilization of front-line Chapters: personnel to conduct search and rescue, first aid, PSS, and other welfare services (e.g. child-friendly spaces and restoring family links).
- Mobilization of assets and equipment - including WASH equipment – PRC have a WASH hub in Albay.
- Conduct rapid needs assessment to determine the revision of the operational strategy, this will include deploying staff from NHQ for sector specific assessments, as well as IFRC Shelter Cluster focal points.
- Deployment of communications personnel.

Emergency response

- Mobilization of rapid needs assessment teams, response assets and personnel;
- Provision of services including first aid, and search and rescue; as well as distribution of mother and new-born baby kits to 250 recipients.
- Distribution of essential household items, shelter, WASH and health items for 1,500 affected families;
- Distribution of multi-purpose cash grants for 1,500 affected families (for one month).
- Treatment and distribution of safe drinking water; provision of hygiene items and key health/hygiene messages to affected families.
- Provision of essential welfare services, including protection, gender and inclusion, psychosocial support (PSS), food assistance, restoring family links support.

The operation will be underpinned by a commitment to quality programming that involves

- Continuous and in-depth assessments and analyses to inform the design and ongoing implementation of the programme.
- Ongoing process of adjustments based on these assessments.
- Adherence to protection, gender and inclusion (PGI) measures, with focus on disability inclusive development; this will include amongst other activities, the collection of sex-age and disability disaggregated data, application of Minimum Standards on PGI in Emergencies through the project cycle (including monitoring and reporting). There will be efforts made to ensure equitable balance of male and female staff and volunteers; as well consideration made to promote the participation of women, men, girls and boys of all ages and backgrounds in the affected population, and of people with disabilities.
- Awareness of the impact of climate change and promotion of climate smart solutions as part of the operations;
- Establishment of mechanisms to facilitate two-way communication with, and ensure transparency and accountability to, disaster-affected people, and highlighting the nature of communication and information as a life-saving mechanism.
- Management and delivery of the programme will be informed by appropriate monitoring and evaluation.

- Market assessments will be integrated with the in-depth assessment as cash-based interventions are being considered based on the needs and feasibility.
- A review of the support provided through the DREF; will be conducted to assess its impact on the timeliness and of the response conducted. This include both the activation of the tool in advance of the disaster for imminent crisis (preparedness and early action); and the emergency response undertaken.

Human resources

All relief activities will be implemented by utilizing existing staff and Red Cross 143 volunteers, RCAT143 and NDRT from other chapters, where needed. The DREF will cover insurance, vaccination and visibility costs (bibs, caps, polo shirts etc.) for volunteers supporting the response efforts. IFRC CO will support PRC in providing technical and support service staff as required to ensure accountability and compliance with regards to the operation.

In addition, provision has been made for IFRC rapid response personnel and regional disaster response team (RDRT) to provide surge support to the IFRC CO and PRC as required. The RDRT will be mobilized based on technical support requirements of the National Society.

Communication

PRC communications team will ensure that Red Cross response efforts are effectively communicated and visible amongst its key public audiences, in a timely manner. PRC staff and volunteers across the country are actively contributing to institutional communications through its own social media networks. A composite team of PRC and IFRC communications officers will work together to generate high quality photos, video clips and news stories for use across IFRC and PRC multimedia platforms. Mobile messaging groups (via Facebook Messenger) were set up between PRC's operations centre, DMS, deployed assessment teams, PRC and IFRC communications' focal persons to share real-time information and data from responders on the ground and vice versa.

Information technology and telecommunications

The DREF will cover costs of mobile phone credits and internet cards for the chapters involved. PRC will ensure that staff and volunteers involved in the operation are accessible via mobile phones. Where necessary, satellite phones will be made available. The chapter will have enough computer software and hardware capacity, and support for the operational requirements.

Security

The National Society's security framework will apply to PRC staff and volunteers throughout. All PRC staff and chapter volunteers are encouraged and will be supported to complete IFRC Stay Safe e-learning courses. Where the presence of personnel under IFRC Security responsibility is approved, the IFRC security framework, including the IFRC Philippines country Security Regulations and contingency plans are applicable to those personnel. An area specific Security Risk Assessment will be conducted for the operational area; risk mitigation measures will be identified and implemented as required. This will include security briefings for all IFRC personnel, movement monitoring for Field travel and availability of safety equipment. Coordination with the ICRC will be observed through regular information-sharing in accordance with the existing and agreed MVT arrangements.

Community engagement and accountability (CEA)

Community engagement and accountability and feedback/response mechanisms will be integrated into the operation to ensure that affected populations have direct access to information on the nature and scope of services provided by PRC, together with processes that will enable community participation and ease of providing feedback and giving responses. A Barangay Recovery Committee (BaReCoM) will be formed to support community engagement as they are direct representatives from their own communities. The community can directly provide feedback to the BaReCoM members, which are essential for continuous improvements of the programme implementation. BaReCoM is composed of a representative number of community representatives – barangay/purok officials, representative of all sectors in the community such as farmers, elderly group, women's group, persons with disabilities, health workers, etc.

Planning, monitoring, evaluation and reporting (PMER)

Reporting on the operation will be carried out in accordance with the IFRC reporting standards. Regular updates will be issued during the operation's timeframe with a final report issued within three months after the end of the operation. The operation team will have technical PMER capacity and additional technical support is provided through IFRC APRO PMER team. The operation monitoring teams will conduct field visits as needed. This will help identify and, where possible and necessary, resolve any issues. Necessary tools and templates for regular data collection and reporting will be adopted from existing PMER resources. A lesson learnt workshop will be conducted which review the activation of DREF in advance of the disaster for imminent crisis (preparedness and early action); and the emergency response then undertaken. Emphasis will be place on learning gained from the early actions taken which were informed by the Early Action Protocol (EAP).

Administration and finance

The IFRC provides the necessary operational support for review, validation of budgets, bank transfers, and technical assistance to PRC on procedures for justification of expenditures, including the review and validation of invoices. PRC is accustomed to and competent in delivering these financial procedures to the required standards.

Logistics and supply chain

Logistics activities aim to effectively manage the supply chain, including procurement, customs clearance, fleet, storage and transport to distribution sites in accordance with the operation's requirements and aligned to IFRC's logistics standards, processes and procedures. Logistics support for this operation is being provided through the strong capacity of the PRC logistics built over the last years, supported by an experienced IFRC CO logistics team.

The main supply chain strategy to meet immediate operational needs is to relocate required relief items for 1,500 families, including blankets, sleeping mats, hygiene parcels, jerrycans and tarpaulins from PRC existing prepositioned stocks. IFRC CO is supporting PRC to mobilize and transport needed equipment and relief items to the affected areas. The items released to meet immediate needs will be replenished by the IFRC following IFRC standard procurement procedures. Items with the local specification to meet local cultural context will be replenished locally by the IFRC CO logistics team whereas IFRC standard relief items, such as hygiene parcels, jerrycans and tarpaulins will be replenished internationally by IFRC APRO Operation Logistics, Procurement and supply Chain Management (OLPSCM) department based in Kuala Lumpur Malaysia. Existing warehouse capacity of the PRC is enough to meet planned operational needs and at this stage there is no need to rent additional warehouse space. Strong PRC fleet will be providing the primary transport support for this operation. IFRC CO will extend its fleet support by making its vehicles available for this operation as and if required. A vehicle has already been released from another operation to be used for this response. IFRC AP OLPSCM will provide technical support to PRC and IFRC CO as needed.

C. Detailed Operational Plan



Shelter

People targeted: 7,500

Male: 3,795

Female: 3,705

Requirements (CHF): 108,877

Sector	Need analysis	Population to be assisted (the number, location etc.)
Essential household items and emergency shelter	<ul style="list-style-type: none"> - Prior to landfall of Typhoon Kammuri, there was a need to mobilize assets, stocks and personnel closer to areas that most likely to be affected. This enabled PRC to initiate an immediate disaster response operation; and ensure the immediate needs of affected families could begin to be addressed as efficiently and effectively as possible. - More than 270,000 homes across the regions worst affected by Kammuri are made entirely of light/salvaged materials, leaving them susceptible to damage caused by the typhoon conditions. As of 3 December 2019, 38 houses have been damaged/destroyed. This number can be expected to rise considerably following assessments; and affected families need support meeting their emergency shelter needs, as well as undertaking repairs or to rebuild their homes. There is also a need to provide safe shelter guidance and awareness. - Essential household items may be lost during flooding and/or landslides, which will need to be replaced. 	<ul style="list-style-type: none"> - Rapid needs assessments will be conducted after landfall; with provision made for aerial support made in the budget for the operation. This will only be committed if/when an impact with expected considerable damage is confirmed. - Essential household items including blankets and sleeping mats which have been pre-positioned in Albay province (Bicol) in advance of landfall will be distributed to 1,500 families (7,500 people). - Tarpaulins (two per family) which have been pre-positioned will be distributed to 1,500 affected families (7,500 people). - Provide technical support, guidance and awareness raising of safe shelter, before and after the distribution of items.

Programme standards/benchmarks: Sphere Standards - Section 7, Shelter and Settlements.

P&B Output Code	Shelter Outcome 1: Communities in disaster and crisis affected areas restore and strengthen their safety, well-being and longer-term recovery through shelter and settlement solutions	<i>1,500 affected families provided with essential household items and emergency shelter</i>																
	Shelter Output 1.1: Shelter and settlements and basic household items assistance is provided to the affected families.	<i>1,500 affected families provided with essential household items</i>																
		<i>1,500 affected families provided with tarpaulins (emergency shelter)</i>																
	Activities planned	Week	1	2	3	4	5	6	7	8	9	10	11	12	13	14	15	16

AP005	Pre-position essential household items and emergency shelter in areas most likely to be affected	x																
AP005	Based on risk-information, mobilize essential household items and emergency shelter assistance to areas most likely to be affected	x																
AP005	Based on risk-information, ensure that PRC staff and volunteers are mobilized; and on standby for immediate response in support of communities most likely to be affected	x																
AP005	Based on risk-information, mobilize equipment to areas most likely to be affected	x																
AP005	Mobilize PRC staff and volunteers to conduct Rapid Disaster Assessments and Needs Analysis (RDANA)		x															
AP005	Identify caseloads and validate beneficiaries in different target groups – integrate gender, diversity and disability in the response		x															
AP005	Distribution of the essential household items, emergency shelter (tarpaulins) to the affected population			x	x	x	x											
AP005	Post distribution monitoring of the essential household items and emergency shelter							x	x									
AP005	Coordination with relevant sectors, the government and other stakeholders	x	x	x	x	x	x	x	x	x	x	x	x	x	x			
AP005	After action review of the support provided (including lessons learnt workshop)																x	x
P&B Output Code	Shelter Output 1.2: Technical support, guidance and awareness raising in safe shelter design and settlement planning and improved building techniques are provided to affected households	<i>1,500 affected families provided with guidance on safe shelter at point of distribution</i>																
	Activities planned	Week	1	2	3	4	5	6	7	8	9	10	11	12	13	14	15	16
AP006	Provide technical support, guidance and awareness raising on safe shelter (BBS)			x	x	x	x											



Livelihoods and basic needs

People targeted: 7,500

Male: 3,795

Female: 3,705

Requirements (CHF): 117,155

Sector	Need analysis	Population to be assisted (the number, location etc.)
Early action protection of livelihoods	- In the areas that are most likely to be affected by Typhoon Kammuri, efforts can be made to protect livelihoods through early action activities such as evacuations of livestock and harvesting of crops.	Pre-emptive evacuation of people and their livestock; and early harvesting of crops in selected at risk communities -

Food assistance	- As of 4 December 2019, total of 123,912 families (495,408 people) evacuated, of those are 114,552 families (458,020 people) who are staying in evacuation centres. Families displaced to evacuation centres need hot meals, especially the more vulnerable groups who may not be able to return back to their homes as quickly	- At least 1,500 affected families who are staying in evacuation centres will be provided hot meals / ready to eat food – this is also part of PRC Welfare Support.
Multipurpose cash grants	- In the immediate term, there is a need to support affected families to provision for destroyed assets and loss of employment opportunities (unrestricted cash) so that they can meet immediate needs.	- 1,500 affected families will be provided multi-purpose cash grants (CHF 70 per family in equivalent local currency – PHP), based on the calculated Minimum Expenditure Basket (MEB) of PHP 3,500) enabling affected families to prioritize their needs. This assistance will be aimed at supporting affected families for one month; however, the need for additional support will be based on the findings of the rapid need assessment, and in consideration of the ongoing disruptions to livelihoods. A pre-identified Financial Service Provider (FSP) will be used to make three cash transfers which will enable PRC to expedite their support to the affected families as soon as they have been selected. - Market conditions will be assessed and then continuously monitored; including any fluctuations in prices of basic commodities so that transfer values can be considered accordingly, and in line with the MEB.

Programme standards/benchmarks:

P&B Output Code	Livelihoods and basic needs Outcome 1: Communities, especially in disaster and crisis affected areas, restore and strengthen their livelihoods	<i>At least 1,500 affected families able to meet their basic needs</i>																
	Livelihoods and basic needs Output 1.2: Basic needs assistance for livelihoods security including food is provided to the most affected communities	<i># communities that receive support with the evacuation of livestock and early harvesting, if appropriate</i>																
	Activities planned	Week	1	2	3	4	5	6	7	8	9	10	11	12	13	14	15	16
AP008	Support communities with the evacuation of livestock; and early harvesting of crops in selected at-risk communities (through Cash-for Work under validated EAP)	x																
AP008	Support community in evacuation of livestock through cash for work	x																
AP008	Basic livelihoods/food distributions in form of Ready to Eat Food/Hot Meals (as part of PRC Welfare Support)		x	x	x	x												
P&B Output	Livelihoods and basic needs Output 1.5: Households are provided with unconditional/multipurpose cash grants to address their basic needs	<i>1,500 affected families provided with multipurpose cash grants to address their basic needs</i>																

Code	Activities planned	Week	1	2	3	4	5	6	7	8	9	10	11	12	13	14	15	16
AP081	Conduct assessment on market conditions; and use of cash and commodity assistance			x														
AP081	Identify, validate and finalized beneficiary lists for the distribution of unconditional multipurpose cash			x	x													
AP081	Conduct community mobilization/sensitization to ensure that targeted communities understand the criteria for selection			x	x													
AP081	Mobilize existing financial service provider who has access in the response area			x	x													
AP081	Distribution of unconditional multipurpose cash to the targeted community					x	x	x	x									
AP081	Market monitoring during and after the unconditional multipurpose cash assistance			x	x	x	x	x	x	x	x							
AP081	Post distribution monitoring of the unconditional multipurpose cash grant									x	x							



Health

People targeted: 7,500

Male: 3,795

Female: 3,705

Requirements (CHF): 49,085

Sector	Need analysis	Population to be assisted (the number, location etc.)
Health	<ul style="list-style-type: none"> - Provision of care services in health facilities have been disrupted in some areas, including neonatal and maternal support, leaving the affected population without access to essential services. - Flooding and displacement raise the vulnerability of affected communities to disease outbreaks such as leptospirosis, dengue, acute respiratory infections and diarrhoea especially children and vulnerable population. Insecticide-treated mosquito nets will be required as a preventative measure. - Floods and subsequent evacuations have had a significant impact on the psychosocial well-being of the displaced people, as well as destruction to their homes and livelihoods, leaving people traumatized. Therefore, psychosocial first aid (PFA) and psychosocial support (PSS) will be required. - Rainfall associated with the Typhoon has resulted in flooding in some areas, and there is a need to mobilize search and rescue 	<ul style="list-style-type: none"> - Deployment of water, search and rescue teams; and trained volunteers to provide first aid. - Provide rapid medical management of injuries and diseases through PRC chapter and Welfare Desks – at evacuation centres. - Approximately 1,000 people in the worst affected areas will be provided with immediate medical and PSS assistance. - Psychosocial support services like psychological first aid will be provided to children and most vulnerable segments of the population. - 1,500 families will be provided with mosquito nets (part of the standard essential household items package); which will be combined with sensitization on their use, and distribution of information, education and communication (IEC) materials.

AP021	Provision of personal protective equipment (PPE) for volunteers and staff including community members depending on the need	x	x	x														
AP016	Replenish First Aid Jump kits (for Chapter level kits) in the affected areas				x	x												
P&B Output Code	Health Output 1.3: Community-based disease prevention and health promotion is provided to the target population	<i>7,500 of people directly reached with community-based disease prevention and health promotion programming in the communities 15,000 of people reached by NS with services to reduce relevant health risk factors</i>																
	Activities planned	Week	1	2	3	4	5	6	7	8	9	10	11	12	13	14	15	16
AP021	Mobilized RC 143 Community Health Volunteers (CHV) to conduct health promotion and disease prevention sessions in the evacuation centres and affected communities.	x	x	x														
P&B Output Code	Health Output 1.4: Epidemic prevention and control measures carried out.	<i>7,500 people in # communities reached with community-based epidemic prevention and control activities 1,500 households receive mosquito nets 50 volunteers continuously monitor the outbreak situations and report back to the OPCEN for immediate response</i>																
	Activities planned	Week	1	2	3	4	5	6	7	8	9	10	11	12	13	14	15	16
AP021	Conduct one-day orientation for Red Cross 143 community health volunteers using Epidemic Control for Volunteers (ECV) Toolkit (with emphasis on the priority diseases in the area)		x															
AP021	Mobilize Red Cross 143 community health volunteers to disseminate key messages on epidemic prevention (with emphasis on the priority diseases in the area)		x	x	x													
AP021	Volunteers undertake community-based surveillance for early detection and reporting of increase cases of diseases in coordination with local health units		x	x	x													
AP021	Distribution of doxycycline as post-exposure prophylaxis to contain leptospirosis		x	x	x													
AP021	Support government mass vaccination campaign through social mobilization of volunteers, if needed		x	x	x													
P&B Output Code	Health Output 1.5: Psychosocial support provided to the target population	<i>1,000 people provided with direct psychosocial support</i>																
	Activities planned	Week	1	2	3	4	5	6	7	8	9	10	11	12	13	14	15	16
AP023	Mobilize trained volunteers to conduct psychosocial support activities, e.g. psychological first aid, psychoeducation and safe spaces in communities and schools	x																
AP023	Monitor PSS activities conducted in the communities	x																
P&B Output	Health Output 1.8: Minimum initial maternal and neonatal health services provided to target population	<i>250 pregnant women received dignity kits 250 pregnant and lactating women received new-born kits</i>																

Code	Activities planned	Week	1	2	3	4	5	6	7	8	9	10	11	12	13	14	15	16
AP022	Identify of priority pregnant and lactating women based on PRC guidelines in coordination with local health unit			x														
AP022	Provide 250 sets of dignity kit and 250 sets of new-born kit to priority pregnant and lactating women.				x													
AP022	Mobilized volunteers to provide key messages on proper use of dignity kit and new-born kit				x													
AP022	Monitor use of dignity kit and new-born kit through the volunteers' network in the communities				x													
AP022	Evaluation of the support provided through post distribution monitoring survey						x											
P&B Output Code	Health Output 1.9: Target population is reached with Search and Rescue activities									<i>500 people supported with search and rescue</i>								
										<i>50 water search and rescue teams mobilized</i>								
	Activities planned	Week	1	2	3	4	5	6	7	8	9	10	11	12	13	14	15	16
AP082	Support government and other stakeholders with pre-emptive evacuations of at-risk communities		x															
AP082	Mobilize search and rescue teams in affected areas			x	x													
AP082	Mobilize ambulances to support search and rescue in the affected areas			x	x													



Water, sanitation and hygiene

People targeted: 20,000

Male: 10,012

Female: 9,988

Requirements (CHF): 46,529

Sector	Need analysis	Population to be assisted (the number, location etc.)
Water, sanitation and hygiene	<ul style="list-style-type: none"> - Water supply infrastructure has been damaged, and services disrupted, which is impacting the affected populations access to safe water. There is also a lack of toilets, bathing facilities and handwashing stations in evacuation centres. - Contamination of water sources resulting from damage to sanitation facilities increases the risk of waterborne disease; and there is a need for cleaning campaigns in the worst affected communities. 	<p>Water supply</p> <ul style="list-style-type: none"> - Mobilize water bladders and water tankers - Distribute safe drinking water - 1,500 families will be provided jerry cans (2 per family) <p>Sanitation</p> <ul style="list-style-type: none"> - Sanitation needs will be determined during the rapid assessment; and measures to address any gaps will then be incorporated into the EPOA. This could include the installation of temporary latrines, shower and washing facilities; or community clean up campaigns. <p>Hygiene</p>

P&B Output Code	WASH Output 1.5: Hygiene-related goods (NFIs) which meet Sphere standards and training on how to use those goods is provided to the target population	1,500 families provided with hygiene kits																	
		Activities planned	Week	1	2	3	4	5	6	7	8	9	10	11	12	13	14	15	16
AP030	Pre-position hygiene kits in the areas most likely to be affected.		x																
AP030	Determine the needs for hygiene NFIs for the affected population based on health risks and user preference in targeted communities in coordination with the WASH group or cluster.			x															
AP030	Identify caseloads and validate beneficiaries in different target groups – integrate gender, diversity and disability in the response			x															
AP030	Distribute hygiene kits to the 1,500 HH from affected population.				x	x	x	x											



Protection, Gender and Inclusion

People targeted: 7,500

Male: 3,750

Female: 3,750

Requirements (CHF): 4,173

Sector	Need analysis	Population to be assisted (the number, location etc.)
PGI	<ul style="list-style-type: none"> - The DREF operation needs to integrate a 'do no harm' approach into all aspects of planning and programming. PRC will capture sex and age disaggregated data for the purpose of accountability to communities, to analyse who is directly benefitting and who is not benefitting from services; and to understanding the number and specific vulnerabilities of females to males based on their gender roles and age (i.e. to understand if a higher proportion of women, children or men are made vulnerable) and to provide age- and sex-appropriate clothing, hygiene materials and healthcare. - Gender, disability and diversity analysis to inform design and implementation – i.e. conducting both independent and sectoral-focused needs assessment that seeks out the specific needs of different groups, especially persons who are the marginalised and most vulnerable. - In addition to work embedded within the sectors, dedicated efforts to support and coordinate those efforts (e.g. training for volunteers on the Minimum Standards including training on data disaggregation). 	<ul style="list-style-type: none"> - All the people assisted in either relief phase and through any sectoral interventions, must include PGI lenses, especially in beneficiary selection, delivery of interventions, monitoring and reporting. - As part of this operation 7,500 people with either messages or interventions in relation to PGI (as part of PRC Welfare Support) - Evacuation centres will be assessed against the Minimum Standards on Protection, Gender and Inclusion in Emergencies; and recommendations to enhance Dignity, Access, Participation and Safety will be incorporated into the EPOA.

AP034	Establish a system to ensure IFRC and NS staff and volunteers have signed the Code of Conduct and have received a briefing in this regard		x	x	x	x	x										
AP034	Map and make accessible information on local referral systems and services for any safeguarding concerns		x														
AP034	Provide psychosocial support to victims of SGBV		x	x	x	x	x										
AP034	Provide essential services (including reception facilities, RFL, and access to education, health, shelter, and legal services) to unaccompanied and separated children and other children on their own		x	x	x	x	x										
AP034	Referral of specific vulnerable individuals (children, people with disability, pregnant women, elderly etc.) to relevant service providers		x	x	x	x	x										
AP034	Volunteers, staff and contractors sign, are screened for, and are briefed on child protection policy/guidelines		x	x	x												



Migration

People targeted: 7,500

Male: 3,750

Female: 3,750

Requirements (CHF): Refer to other sectors as integrated across all outputs

Sector	Need analysis	Assistance planned and population to be assisted
Migration	<ul style="list-style-type: none"> Total of 495,408 people (123,912 families) families have been displaced (the majority to evacuation centres noting. 37,388 people (9,360 families) have been displaced and are staying outside of evacuation centres; The displaced population are facing challenges in accessing basic services, including health, safety, livelihoods and education. Power supply disruptions have been experienced making it difficult for people to initially connect with their families 	<ul style="list-style-type: none"> Assistance and protection for those displaced people in both evacuation centres and outside of evacuation centres, including supporting access to basic services (health, education, livelihoods, protection etc) Effective and safe referral for assistance and protection needs that cannot be addressed Monitoring, assessment and analysis of onward movement, and/or new displacement Welfare desks will have RFL teams, who will work in close collaboration with ICRC in the affected areas to provide support to the affected population and linking them with other agencies for needed services. Activities will be covered in the PGI section (above).

P&B Output Code	Output S2.1.6: Coordinating role of the IFRC within the international humanitarian system is enhanced	<i>(At least) 3 coordination meetings held with other stakeholders</i>																
	Activities planned	Week	1	2	3	4	5	6	7	8	9	10	11	12	13	14	15	16
AP049	IFRC CO supports PRC in coordination with other humanitarian actors and relevant clusters on a regular basis		x	x	x	x	x	x	x	x	x	x	x	x	x	x		
AP049	Support service delivery of humanitarian shelter actors			x	x	x	x	x										
AP049	Support the development and implementation of the shelter strategy			x	x	x	x	x										
AP049	Monitor and evaluate the humanitarian shelter response			x	x	x	x	x										
AP049	Support advocacy on behalf of the cluster			x	x	x	x	x										
AP049	Build national capacity of shelter cluster in preparedness and contingency planning			x	x	x	x	x										
P&B Output Code	Outcome S2.2: The complementarity and strengths of the Movement are enhanced	<i>Complementarity and strengths of the Movement enhanced</i>																
	Output S2.2.1: In the context of emergencies the IFRC, ICRC and NS enhance their operational reach and effectiveness through new means of coordination.	<i>Movement coordination is well-established</i>																
	Activities planned	Week	1	2	3	4	5	6	7	8	9	10	11	12	13	14	15	16
AP049	SMCC and movement coordination			x	x	x	x	x	x	x	x	x	x	x	x	x		
P&B Output Code	Outcome S3.1: The IFRC secretariat, together with National Societies uses their unique position to influence decisions at local, national and international levels that affect the most vulnerable.	<i>IFRC and PRC participate in local, national and international dialogues/meetings</i>																
	Output S3.1.1: IFRC and NS are visible, trusted and effective advocates on humanitarian issues	<i>10 communications materials produced/published</i>																
	Activities planned	Week	1	2	3	4	5	6	7	8	9	10	11	12	13	14	15	16
AP054	Communications work of PRC is supported by the IFRC CO and APRO		x	x	x	x	x	x	x	x	x	x	x	x	x	x		
AP054	Support the positioning of the Philippine Red Cross as a credible and leading humanitarian responder with a strong network of volunteers and expertise in disaster management.			x	x	x	x	x	x	x	x	x	x	x	x			
AP054	PRC, IFRC Communications team to ensure Red Cross response efforts, challenges, and milestones are effectively communicated amongst its key public audiences and maintain active online media engagement throughout the emergency			x	x	x	x	x	x	x	x	x	x	x	x			
AP054	A composite team of PRC and IFRC communications officers will work together to generate high quality photos, video clips, and news stories for use across IFRC and PRC multimedia platforms.			x	x	x	x	x	x	x	x	x	x	x	x			

