

www.ifrc.org
Saving lives,
changing minds.

Revised Emergency Appeal Albania: Earthquake

 International Federation
of Red Cross and Red Crescent Societies

Revised Appeal n° MDRAL008

Glide n° [EQ-2019-000157-ALB](#)

For details on coverage, see the
[Donor Response Sheet](#)

To be assisted: up to 10,000 people (2,000 households) directly, and 50,000 people through community-based activities

250,000 Swiss francs DREF allocated

5.1 million Swiss francs Appeal current funding requirements

1.8 million Swiss francs funding gap

Appeal launched: 29 November 2019

Operations Update 1: 20 December 2019

Revision 1: 14 February 2020

Appeal ends: 30 November 2020 (12 months)

This Revised Emergency Appeal seeks a total of 5,1 million Swiss francs (increased from 3 million CHF) to enable the International Federation of Red Cross and Red Crescent Societies (IFRC) to continue supporting the **Albanian Red Cross (ARC)** to deliver direct assistance and support to **10,000 people for a period of 12 months and 50,000 people through community-based activities**, with a focus on the following areas of focus and strategy for implementation: **Shelter; Livelihoods and basic needs; Health; Water, sanitation and hygiene (WASH); Protection, Gender and Inclusion (PGI); Disaster Risk Reduction (DRR) and Strengthening National Society.**

The planned response reflects the current situation and information available at this time of the evolving operation and will be adjusted based on further developments and more detailed assessments. *More details will be available in the [Revised Emergency Plan of Action](#).*

The disaster and the Red Cross Red Crescent response to date

26 November 2019: 6.4 magnitude earthquake hits Albania at 3:54 AM local time, centered 30 km (19 miles) west of Tirana, at a depth of 10 km (6 miles). It was followed by a second earthquake of 5.4 magnitude at 07:10 AM with the epicenter around Durres (34 km northwest of Tirana).

26 November 2019: The ARC, through its local branches situated in most affected areas in Durres, Tirana, Kruje, Lezhe and Laç arrived immediately to the disaster site to assess damages and provide support to the affected population. The Albanian government activated the EUCPM (European Civil protection Mechanism) and several search and rescue (SAR) teams arrive in Albania.

27 November 2019: IFRC issued Information Bulletin no.1 and deployed members of its operational team to support ARC in the needs assessment.

29 November 2019: IFRC issued an Emergency Appeal for CHF 3M, to directly support 10,000 people affected by the earthquake, and provide support to 50,000 people through community-based activities.

14 February 2020: IFRC issues a Revised Emergency Appeal for CHF 5.1M, upscaling the number of the targeted households by cash programming and extending distributions and capacity building activities.



Relief distribution activities of Albanian RC.
Photo: Albanian Red Cross

The operational strategy

Overview

On 26 November 2019, a 6.4 magnitude earthquake hit Albania at 3.54 am local time, centred 30 km west of Tirana, at a depth of 10 km followed by a second earthquake near Durres (34 km northwest of Tirana) and aftershocks in subsequent weeks. 51 people lost their lives¹ and 913 people were injured (as of 9 February 2020). The Government of Albania declared a state of emergency on 27 November lasting for 30 days, later extended until 31 March 2020.

The most affected administrative regions are the prefectures of Durrës, Lezhë and Tiranë. Structural damage is widespread, yet focused on old buildings and on those built with poor building practice in the transition area of the 1990s and early 2000s. Additional administrative areas considered secondary affected are those where people have been evacuated to by the government, including Berat, Dibër, Elbasan, Fier, Kukës, Shkodra and Vlorë.

Structural damage assessment by Albanian experts and supported by international capacities are still ongoing. The last update available (as shown in Table 1) indicates that 5,080 buildings (including apartment blocks, single-family houses, hotels, schools, infrastructure, etc) have been categorized under DS4 and DS5, equating to being uninhabitable. In the Post-Disaster Needs Assessment (PDNA) a total of 11,490 housing units have been classified as fully destroyed / to be demolished.

Districts	DS 0 (no damage)	DS 1 (light damage)	DS 2 / 3 (medium – severe damage, repairable)	DS 4/5 (very severe damage, uninhabitable)	Total
Tirana	5,449	1,701	1,861	1,513	10,524
Durres	23,009	2,829	4,250	2,556	32,644
Lezhe	939	686	1,365	1,011	4,001
total	29,397	5,216	7,476	5,080	47,169

Table 1: Damage assessment results of inspected buildings per prefecture
(as of 10 January for Tirana and Lezhe and 21 January for Durres - based on information shared by the National Civil Protection Agency-)

Health facilities, as well as electricity, water and sanitation and communication systems were not significantly affected and are functioning on pre-disaster level. Medical care for the affected population is widely implemented through the governmental health service.

A significant number of schools are out of function (46 fully destroyed / 45 partly damaged) according to the Government of Albania (GoA). While all schoolchildren are back in education, pupils of the aforementioned schools need to travel to intact schools, where classes are held in different shifts.

Informal governmental estimations on the overall number of displaced persons and currently living in temporary accommodations stand at 32,000 (as reflected in the table below). As of 10 February, there are no earthquake affected people staying in hotels anymore. With the approved rent bonus most of them are now staying in rented accommodations according to the Civil Protection. Winterisation of tents became a priority in late December and early January, with a large percentage of tent [up to 70%, according to the GoA] not suitable for winter conditions. A governmental "rent subsidy" scheme (cash for rent) has been introduced to support the displaced population.

Accommodation type	Total number of people	Durres Prefecture	Lezhe Prefecture	Tirana Prefecture
Hotels*	0	0	0	0
Tents**	10,000	5,842 (1,387 families)	1,786 (462 families)	2,372 (570 families)
host families, rentals & others		~22,000		
Total		~32,000		

Table 2: Displaced persons (for hotels and tents breakdown per prefecture)

* Ministry of Tourism (as of 22 January 2020)

** National Civil Protection Agency (as of 15 January; number of people based on average family size as per UNDP/MoF survey results)

¹ Settlements with fatalities: Thumane – 25 fatalities, Durres – 24, Mamunas – 1, Tiranë – 1.

Summary of Red Cross response to date

Albanian RC has been responding with a total of 350 volunteers and staff from the onset of the disaster. Immediate response included the provision of First Aid, food assistance, psychosocial support services, distribution of household items to cover basic needs and Restoring Family Links (RFL) activities. In the subsequent weeks, focus was given to relief distributions (shelter items, food, and hygiene material) and psychosocial (PSS) activities. Primary regions of activity are the prefectures of Durrës, Tirana, Lezhë.

As of 10 February 2020, ARC has been present in 91 different locations across the affected area and ten branches have been actively involved in the response operations. ARC continues to distribute items from its own stock and incoming in-kind assistance.

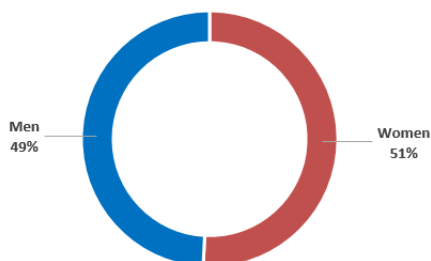


Figure 2: Gender distribution of affected families receiving ARC "Standard packages" (n= 4,535 persons)

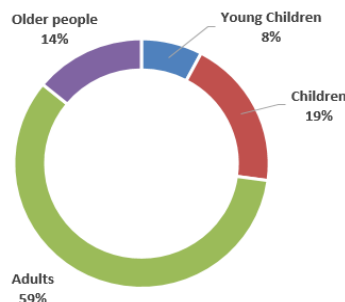


Figure 3: Age distribution of affected families receiving ARC "Standard packages" (U5, U18, adults, older people; n= 4,535 persons)

Livelihoods and basic needs

ARC is providing in-kind assistance, sourced from its own stocks, appeal-funded goods and bilateral support, to the affected population. The focus of distributions is on people who reside near their damaged houses (often living in tents), especially in rural and peri-urban areas, as well as on people living in their not severely damaged houses / apartments or temporarily renting accommodation.

In addition to the distribution of the ARC "Standard Package" (4,535 packages were distributed as of 10 February with funds from the IFRC Appeal) which consists of food items, blankets and a family hygiene kit; ARC is also distributing tents, field bed, sleeping bags, sleeping mats, female hygiene kits, baby hygiene kits, kitchen sets and clothes (2,200 hygiene kits have been provided through IFRC Appeal). Activities during the initial weeks also included the distribution of hot meals (a total of 7,329 portions were distributed).

Preparations continue for a Cash and Vouchers Assistance programme, which will soon replace relief item distributions. ARC, with the support of the IFRC, is continuing its strong advocacy efforts with relevant stakeholders at the central and local levels. Social welfare offices and local technical government staff engaged with damage assessments are the main counterparts of ARC teams and branches in targeting the households based on the established criteria. Preparation actions are also shared with technical working group partners during the Cash Working Group meetings. Albanian RC launched a tender in order to identify the Financial Service Provider. The intervention aims to reach about 1,100 households with multipurpose cash grants of CHF 120 (13,450 Albanian Lek) per household member. Payments will take place monthly for a duration of up to five (5) months to cover basic needs.

Health

Volunteer teams provided first aid and psychosocial support to families affected immediately after the earthquake, during search and rescue activities and in hospitals. As of 9 February 2020, 1,678 persons were assisted with PSS/Psychological First Aid services. Medical care for the affected population is widely implemented through the governmental health service, including medical visits and the provision of medication.

In the longer run, multifunctional Mobile Teams will implement health and PSS related activities. ARC/IFRC developed the training plan for the psychosocial support and health programme, including training for multifunctional mobile teams, psychosocial support for school programmes, national training of trainers in psychosocial support, as well as training of volunteers in community-based disaster risk reduction activities. Until 31 January 2020, 6 trainings on PSS aspects (with a total of 100 staff and volunteers participating) were held. Since the beginning of the operation the ARC assigned a Health officer and from mid-January, an ARC PSS officer is in charge of the implementation of PSS activities.

Shelter

ARC provided shelter-related household items in temporary camps set up in affected areas, in collective shelters and as well in hotels where people were evacuated to. In addition, ARC volunteers are also reaching out to people who stay close to their uninhabitable houses, especially in rural areas. Immediate winterisation needs for these families were tackled by the distribution of suitable tents (636, from existing ARC stocks and with assistance of the Turkish Red Crescent) and winterisation material (including 458 sleeping bags, 360 sleeping mats and a similar number of field beds, 407 kitchen sets and more than 23,297 blankets -18,100 financed through the IFRC Appeal-).

The GoA (Vice-Minister of Finance ²) and IFRC are co-leading the national shelter working group in line with IFRC's global shelter cluster role. Initial focus was on winterisation, with a current shift to supporting the mid-to long-term planning support to GoA recovery strategies.

The number of persons sheltered in hotels is expected to decrease in the coming weeks with more families receiving the cash for rent scheme. Affected families are registered for the rent scheme in a first step; the approval of the rent scheme implies recipients to leave hotel accommodation, which may exacerbate the shelter situation. As of 5 February 2020, 11,222 families (around 47,267 persons) were approved for the rent bonus, while others are registered, but not approved yet³.

Needs assessment and targeting

Based on RC assessments, analysis of the GoA and findings from other organizations present in country, the primary needs of the affected population are in shelter, basis needs assistance, community-based health, PSS, and WASH (hygiene promotion).

- **Shelter:** Based on the rapid assessment conducted by World Vision in December; the most pressing needs and priority of the affected population are shelter (85% of all affected households). As indicated in Table 1, 5,080 buildings have been categorized uninhabitable. As of 21 January 2020, an estimated 32,000 people were still displaced and living in temporary accommodation. Most of the displaced households are staying in tents, host families or rented apartments (and until recently in hotels as well - see **Table 2-**).
- **Livelihoods and Basic Needs:** The loss and damage of property has a severe financial impact on the affected families, many of whom are incapable of recovering on their own without support. With ongoing in-kind basic needs assistance, the RC has identified areas for continued support for affected vulnerable households. These see an out-phasing of food and other in-kind support and roll out of a financial assistance support to cover basic needs
- **Health:** Health facilities are functioning almost to the extent prior to the disaster. Authorities are providing home visits in the health sector and provide taking medication to chronically sick persons. Specific dietary needs are widely taken care of by local authorities and local NGOs. Since the beginning of the operation, ARC volunteers teams address acute and chronic health conditions of affected population: trauma, communicable diseases, diabetes, disabilities with special focus to community based health actions for most at risk groups (especially in rural areas) such as older people, children and pregnant women.
- **PSS:** The direct impact of the earthquake is exacerbated by a high degree of uncertainty within the affected population resulting from the trauma suffered and a lack of clear information on their current and future options. Consequently, people are stressed, frightened and have difficulties in coping with the past and current situation. In addition, occasional aftershocks undermine people's sense of safety, thereby not only affecting those with destroyed or damaged houses and other asset loss, but the wider communities. Hence, there is a need for a psychosocial programming with a broader scope.
- **WASH:** Based on GoA assessments, water and sanitation systems have not been disrupted significantly and are operating on pre-disaster level. Supplementary assistance in terms of hygiene items is provided for displaced people and those staying in damaged houses, given their limited access to sanitary services. The affected population includes groups with specific hygiene-related needs, such as displaced women and families with small children, who are assisted with specific items. Promotion of good hygiene practice is required, with a special focus on the population living in tents.

In accordance with previous practices in Albania, identification and targeting of people in need is primarily based on information of 1) affectedness (house/apartment damaged, lost family members) and 2) vulnerability. Information is widely provided by local authorities and validated by ARC with additional assessments. In addition, assessments and information on people in need from NGOs are used. Primary selection criteria are damage to houses/apartments **and** vulnerability, the latter is based on welfare system status and on assessment results.

² The Vice-Minister of Finance (MoF) is in charge of accommodation.

³ At least 993 families were pending rent subsidy approval (as of 5 February 2020, GoA Situation Reports)

Coordination and partnerships

Albanian authorities are in charge of coordination, with municipal, prefectural and national authorities involved in the operation. A 'special envoy for crisis response and relief' chairs the GoA crisis management structure. A new temporary Ministry of Reconstruction has been established recently to coordinate the long-term recovery efforts and sectoral and operational coordination mechanisms have also been established. Damage assessments, led by the GoA and supported by international experts, are still ongoing (the Post Disaster Needs Assessment was recently published on 3 February 2020).

Damages and losses declared on 23 January by the Prime Minister of Albania amount to 1 billion Euros (higher than initial estimates of 600-700 million Euros), equalling to about 7.5% of the Albanian GDP. Around 75% of recovery needs are allocated in the housing sector. So far, about 200 million Euros have been allocated for reconstruction from the state budget.

A donor conference for Albania will take place in Brussels on 17 February 2020 where Albanian RC will be represented along with IFRC Regional Office for Europe and Red Cross EU Office representatives.

Red Cross Red Crescent Movement

The management of the IFRC's Regional Office for Europe (ROE) has been in constant contact with the ARC leadership in support of ROE technical teams. Currently, the Head of Country Cluster Support Team for Central and South-Eastern Europe is accredited to the country as the HoD (non-resident), based in Budapest. IFRC has also deployed a total of 13 Rapid Response personnel from IFRC Regional Office and from partner National Societies in the areas of operational management, health, psycho-social support, logistic, cash assistance, shelter, reporting and communications. Rapid response capacities are progressively phasing out. The recruitment of medium-term personnel replacing rapid response capacities has been widely finalized, with replacements for key functions arriving from mid-February onwards.

The ROE maintains close contacts with the International Committee of the Red Cross (ICRC) Office in Belgrade covering Albania. ICRC has also been supporting ARC directly in restoring family links activities.

There are two partner National Societies currently working in the country; Italian RC (started bilateral longer-term activities earlier this year on homecare for older people), and the United Arab Emirates RC (in country for almost 20 years).

ARC/IFRC are co-leading the cash working group with UNICEF. Part of the activities included the preparation of a policy paper informing stakeholders (including the GoA) about humanitarian cash assistance and the support to cash advocacy in country (there is a generally low level of information on cash programming beyond the humanitarian community). IFRC is also co-leading the Shelter working group (with the GoA), in line with its global shelter cluster role. The current focus is to support long term planning and recovery strategies.

In addition to the multilateral assistance received through the Emergency Appeal, ARC also received bilateral assistance from Croatia RC, Hellenic RC, Italian RC, RC of the Republic of North Macedonia, Montenegro RC, Qatar RC, Slovenian RC, Spanish RC, Turkish RC and United Arab Emirates RC.

Other actors

The UN Disaster and Assessment Coordination (UNDAC) team has ended its mission on 6 January 2020, replaced by a 3-month OCHA representative. UNDAC worked in a joint deployment with European Union Civil Protection team, which ended his mission on 20 December 2019.

International actors present include Swiss Development Cooperation/Swiss Humanitarian Aid, USAID; UN Development Programme (UNDP), UN Refugee Agency (UNHCR), UN Children's Fund (UNICEF), UN Women, WHO; Caritas Europe, Global Aid Network (GAIN), Save the Children (SC), Terre des Hommes (TdH), World Vision International, national and local NGOs. The number of national and local NGOs active on the ground decreased significantly from the onset of the disaster.

Proposed Areas for intervention

Overall operational objective

The Revised Emergency Appeal operation aims to meet the immediate needs and support the early recovery of the most vulnerable population affected by the earthquake in Albania. The number of households for multipurpose CVA assistance has been increased from 700 to 1,100. Replenishment of ARC contingency stocks as well as NS capacity development in cash preparedness, volunteer management, IT, finance and logistics systems support have also been included.

A total of 10,000 people will be supported with health/PSS, WASH (hygiene kits), livelihoods and basic needs (multi-purpose cash grants), and shelter (household items) activities. Up to 50,000 people will be reached with community based DRR, PSS and health activities through awareness programming. The operation thereby takes an integrated approach for activities in the sectors of WASH, health/PSS, Shelter, PGI (including RFL) and DRR through multifunctional mobile teams.

This Emergency Appeal contributes to the overall ARC plan of action for their response to the earthquake, complementing the national and bilaterally funded activities of ARC in the respective sectors.

Areas of Focus



Shelter

People targeted: 10,000 people (2,000 households)

Male: 4,650

Female: 5,350

Requirements (CHF): 330,000

Proposed intervention

Due to the earthquake, about 32,000 persons (as of 21 January 2020) are displaced and live in temporary accommodation (spotted tents, hotels, host families or rented apartments). The GoA provides a rental bonus for 12 months for earthquake-affected households.

The GoA is in charge of shelter support, with humanitarian actors complementing the state authorities' efforts. ARC has been providing shelter-related relief from the beginning, with shelter distributions peaking from late December to mid-January with an immediate need to winterise the increasing population sheltering in spotted tents. The shelter situation of displaced persons is expected to change further in the coming months, gradually shifting from hotels to rented spaces and host families, with slowly decreasing numbers of persons sheltering in winterised tents. Further gaps identified will be addressed in line with NS capacity to deliver in this sector and in coordination with the authorities and other actors in country. Household items distributed from NS-own stocks will be replenished in preparation for future emergencies.

Outcome 1: Communities in disaster and crisis affected areas restore and strengthen their safety, well-being and longer-term recovery through shelter and settlement solutions.

Output 1.1: Shelter and settlements and basic household items assistance is provided to the affected families.

Ongoing and planned activities

- Coordination with government and other stakeholders
- Distribution of emergency shelter (tents) and household items (blankets, field beds, sleeping bags, kitchen sets, mattresses, etc.) to the affected population based on need and return to homes)
- Replenishment of NS stocks
- Post-distribution monitoring including satisfaction metrics
- Lessons learned activities on shelter emergency responses



Livelihoods and basic needs

People targeted: 10,000 (2,000 households)

Male: 4,650

Female: 5,350

Requirements (CHF): 2,920,000

Proposed intervention

ARC is providing basic monthly food parcels to 2,000 households (10,000 people). Displaced families, those staying in tents, dorms and with host families, require cooking facilities and the demand is expected to rise upon return to restored home.

Following the relief activities within the first three months of the operation, ARC will shift to cash assistance to vulnerable households. Families and communities will need support to cover their basic needs until they can recover their livelihoods with dignity. About 1,100 households will be provided with CHF 120 (~13,450 Albanian Lek) per household member per month⁴. Payments will take place monthly for a duration of up to 5 months to cover basic needs, with an option to switch to cash support for early recovery after month 3, based on the evolution of the situation and post distribution monitoring results. A coordinated approach was developed by the inter-agency Cash Working Group in country and will be implemented in consent with the GoA.

Outcome 1: Communities, especially in disaster and crisis affected areas, restore and strengthen their livelihoods

Output 1.2: Basic needs assistance for livelihoods security including food is provided to the most affected communities

Output 1.5: Households are provided with unrestricted/multipurpose cash grants to address their basic needs

Ongoing and planned activities

- Distribution of food parcels to affected population
- Post-distribution monitoring of the use of the food parcels
- Assessment and selection of most vulnerable households for multipurpose cash grant (including livelihoods assessment as part of the registration of households)
- Multipurpose cash assistance for 1,100 households for up to 5 months
- Use livelihoods assessment results and Post Distribution monitoring conclusions to identify options for livelihoods recovery assistance, develop further activities and switch modality, if needed and appropriate
- Post-distribution monitoring against cash assistance including satisfaction metrics



Health

People targeted: 10,000 people directly, 50,000 people through community-based activities (including the aforementioned 10,000).

Male: 22,500

Female: 27,500

Requirements (CHF): 325,000

Proposed intervention

ARC will provide community-based health and first aid assistance (CBHFA) with special focus on vulnerable persons (older people, children, pregnant women, people with specific needs and people with chronic diseases). Activities will include care assistance provided through home visits, first aid, health and hygiene promotion, provide advices to visit health facility or support in transportation when necessary, as part of the activities of multifunctional mobile teams. ARC will benefit from capacity building of staff and volunteers in CBHFA and First Aid.

Outcome 1: The immediate risks to the health of affected populations are reduced

Output 1.1: The health situation and immediate risks are assessed using agreed guidelines

Outcome 2: The immediate risks to the health of the affected populations are reduced through improved access to medical treatment

Output 2.1: Improved access to health care and emergency health care for the targeted population and communities

Outcome 6: The psychosocial impacts of the emergency are lessened

Output 6.1: Psychosocial support provided to the target population as well as to RCRC volunteers and staff

⁴Irrespective of age. Upper ceiling defined at four household members. The transfer value is calculated against the minimum expenditure basket to cover the most urgent needs and is extracted from the Household Budget Survey 2018 issued by National Institute of Statistics of Albania.

Ongoing and planned PSS activities

- Training for volunteers in psychosocial support and psychological first aid
- Adaptation, translation and distribution of PSS training manuals and Information Education and Communication (IEC) materials
- Developing Standard Operating Procedure for Multifunctional Mobile Teams
- Cycle of PSS training for staff and volunteers involved of Multifunctional Mobile Teams
- Providing individual and group psychosocial support to affected people
- Mass PSS engagement campaign through social and mass media
- Adaptation, piloting and conducting PSS activities in schools

Ongoing and planned Health activities

- In coordination with health authorities, undertake regular assessments to identify health needs, and health service gaps in target communities Undertake regular assessments to identify PSS needs, and mental health service gaps
- Procurement and distribution of 300 First Aid kits and materials
- Cycle of First aid and CBHFA training to staff and volunteers of Multifunctional Mobile Teams
- Conduct cycle of home visits to affected population with specific needs, and ensure referral to health facilities



Water, sanitation and hygiene

People targeted: 10,000 (2,000 households)

Male: 4,650

Female: 5,350

Requirements (CHF): 130,000

Proposed intervention

Water and sanitation infrastructures are functioning well in the affected areas and current needs are for supplementary support for maintaining good hygiene and sanitary conditions and to prevent communicable diseases. ARC will continue distributing hygiene kits and specific menstrual hygiene kits and baby kits. ARC stocks distributed will be replenished. ARC will raise hygiene awareness (including menstrual hygiene aspects) with the affected population as supplementary support in order to maintain good hygiene and sanitary conditions and to prevent communicable diseases, as part of the activities of multifunctional mobile teams and through mass- and social media.

Outcome1: Immediate reduction in risk of waterborne and water related diseases in targeted communities

Output 1.4: Hygiene promotion activities which meet Sphere standards in terms of the identification and use of hygiene items provided to target population

Output 1.5: Hygiene-related goods (NFIs) which meet Sphere standards and training on how to use those goods is provided to the target population

Ongoing and planned activities

- Conduct induction and refreshment training to staff and volunteers (integrated with CBHFA training - see Health AoF-
- Develop hygiene promotion engagement activities and produce accompanying materials in partnership with affected people and through mass- and social media
- Disseminate hygiene promotion messages to affected population with accent on people living in tents via multifunctional mobile teams
- Distribution of hygiene kits to affected population
- Post-distribution monitoring of the use of the hygiene kits, including satisfaction metrics



Protection, Gender and Inclusion

People targeted: 1,000 people (200 families)

Male: 300

Female: 700

Requirements (CHF): 25,000

Proposed intervention

There was an immediate need for RFL services in the first days of the response, as people were trying to locate and get information about their relatives in the affected areas. ARC will uphold RFL activities with focus on

connecting and maintaining communication between family members in and outside of the affected areas through the multi-functional mobile teams. There may be a longer-term need to ensure that specific target group (such as older people) can easily access information and re-establish family links.

ARC recognizes and acknowledges the need to mainstream and enhance its capacity in addressing PGI issues as well as in expanding its protection community-based approaches. Mainstream standards will be included in all the other area of focus and staff and volunteers will be trained in applying protection principles through their response. Child protection and referrals will be included in all PSS training. Overall, PGI is mainstreamed in all sectoral response.

Outcome 1: Communities become more peaceful, safe and inclusive through meeting the needs and rights of the most vulnerable.

Output 1.1: Programmes and operations ensure safe and equitable provision of basic services, considering different needs based on gender and other diversity factors.

Ongoing and planned activities

- Integrate and disseminate key messages on Code of Conduct in related information and dissemination activities where relevant to volunteers, partners and communities
- Provision of RFL services (focusing on connectivity) at mapped locations
- Ensure that information and services are equally accessible and inclusive, and barriers to access are removed
- Continuation of tracing service accepting tracing inquiries from abroad
- Conduct active consultation with diverse groups, especially hard to reach and marginalized groups to ensure effective actions for assistance



Disaster Risk Reduction

People targeted: 50,000

Male: 22,500

Female: 27,500

Requirements (CHF): 80,000

Proposed intervention

Albania is prone to various disasters including floods and earthquakes. As auxiliary to the public authorities in the humanitarian field, one of the primary roles of any NS is to coordinate and provide disaster response services. The frequency and the impact of natural disasters also highlight the need to ensure that community preparedness and risk reduction measures are initially implemented alongside relief and recovery interventions. Community-based disaster preparedness and risk reduction activities will be undertaken to strengthen community resilience to disaster affected and additional disaster prone prefectures This will be done with ARC branches and community-based volunteers, by improving early warning early actions and identifying local risks, vulnerabilities and capacities to strengthen resilience of communities. School-based DRR activities will take place. A concerted effort of education working group and education authorities is envisaged to integrate DRR learning into school curricula. Up to 30 schools will benefit from DRR sessions and drills. The ARC will also disseminate preparedness messages through multifunctional mobile teams, social media and other media platforms.

Outcome 1: Communities in high risk areas are prepared for and able to respond to disaster

Output 1.1: Communities take active steps to strengthen their preparedness for timely and effective response to disasters.

Ongoing and planned activities

- Adaptation and standardization of ARC standard disaster risk reduction training of volunteers
- Info sessions with community members in 60 communities in disaster risk reduction and community and family contingency planning
- Support to 30 schools in development of school contingency plan and engage teachers and students in disseminating DRR messages.
- Preparedness and simulation exercise and adaptation of school contingency plan for 30 schools
- Disseminate Public Awareness and Public Education (PAPE) DRR key messages through info sessions and multifunctional mobile teams' visits
- Advocate for and support local level contingency planning as a member of local emergency technical committees

Strategies for Implementation

Based on the demand for the technical and coordination support required to deliver in this operation, the following programme support functions will be put in place to ensure an effective and efficient technical coordination: human resources; logistics and supply chain; information technology support (IT); planning, monitoring, evaluation and reporting (PMER); partnerships and resource development; finance along with the programmatic areas including PSS, operations management, coordination, PSS and CVA, Community Engagement and Accountability (CEA). *More details will be available in the Revised Emergency Plan of Action.*

Strengthening National Societies

Total requirements (CHF): 655,000

- Support ARC volunteer management and capacity building
- Training, coaching and mentoring and financial support of staff and volunteers on various sector technical aspects
- CVA capacity building for the HQ and branches
- Logistics development support for the NS
- Support the strengthening of the National Disaster Response Teams
- Support Capacities in Community Engagement and Accountability
- Communications capacity building
- PMER capacity building
- PER orientation and self-assessment workshop

Ensure Effective International Disaster Management

Total requirements (CHF): 360,000

- Surge support, with different technical profiles including operations manager, Logistics, Relief / Logistics, Shelter, CVA and PSS
- Peer-to-peer support facilitation
- IFRC Logistics delegate will provide support for coordinating supply chain activities, replenishment
- Continue the development of an NS contingency plan

Influence Others as Leading Strategic Partners

Total requirements (CHF): 40,000

The earthquake has been leading news bulletins around the world, and the IFRC Europe regional communications team has been supporting the Albanian Red Cross with international media requests since the earthquake struck. A press release, a media advisory, key messages and photos and videos have been shared via IFRC regional and global communication channels.

Three further communication missions are planned after 6 months and after 11 months, with a purpose to gather content that demonstrates the impact of Red Cross Red Crescent intervention for the media, the donors and local communities. There is also a need for longer-term communication capacity building in the National Society, including support of participation in regional IFRC workshops and development of audio-visual communication equipment.

Ensure effective IFRC

Requirements (CHF): 235,000

The following programme support functions will be put in place to ensure a strong IFRC: human resources, finance and administration, security, and auditing. IFRC will develop security plans. In addition, all RCRC personnel actively involved in the operations should have completed the respective IFRC security e-learning courses (i.e. Stay Safe Personal Security, Security Management, or Volunteer Security). *More details available in the Revised Emergency Plan of Action.*

Funding Requirements

International Federation of Red Cross and Red Crescent Societies

REVISED EMERGENCY APPEAL

MDRAL008- Albania - Earthquake

Funding requirements - summary

LIVELIHOODS AND BASIC NEEDS	2.920.000
SHELTER	330.000
HEALTH	325.000
WATER, SANITATION AND HYGIENE	130.000
DISASTER RISK REDUCTION	80.000
INCLUSION, GENDER AND PROTECTION	25.000
STRENGTHEN NATIONAL SOCIETY CAPACITIES	655.000
ENSURE EFFECTIVE INTER'L DISASTER MANAGEMENT	360.000
INFLUENCE OTHERS AS LEADING STRATEGIC PARTNERS	40.000
ENSURE A STRONG IFRC	235.000
TOTAL FUNDING REQUIREMENTS	5.100.000,000

all amounts in Swiss Francs (CHF)

Jagan Chapagain
Secretary General

Reference documents



Click here for:

- Revised Emergency Plan of Action (EPOA)

For further information, specifically related to this operation please contact:

In the Albanian Red Cross

- Artur Katuci, Secretary General, Tel: +355 42 222 037, arturk@kksh.org.al
- Fatos Xhengo, Disaster Response Coordinator, Mob: +35 5692029142, Tel: +35542257532, fxhengo@kksh.org.al

In the IFRC Regional Office for Europe

- Seija Tyrninoksa, Deputy Regional Director a.i. and Head of Country Cluster, Central and South-Eastern Europe, Mob.: +36 70 953 7705, seija.tyrninoksa@ifrc.org
- Seval Guzelkilinc, Head of Disaster and Crisis (Prevention, Response and Recovery), seval.guzelkilinc@ifrc.org
- Jassen Slivensky, Operation Manager, Phone: +355 693197603, jassen.slivensky@ifrc.org
- Louise Daintrey, Head of Partnerships and Resource Development, louise.daintrey@ifrc.org
- Dorottya Patko, PMER Manager; dorottya.patko@ifrc.org

In the IFRC Secretariat in Geneva

- Antoine Belair, Senior Officer, Operations Coordinator; antoine.belair@ifrc.org

How we work

All IFRC assistance seeks to adhere to the **Code of Conduct** for the International Red Cross and Red Crescent Movement and Non-Governmental Organizations (NGO's) in Disaster Relief and the **Humanitarian Charter and Minimum Standards in Humanitarian Response (Sphere)** in delivering assistance to the most vulnerable. The IFRC's vision is to inspire, **encourage, facilitate and promote at all times all forms of humanitarian activities** by National Societies, with a view to **preventing and alleviating human suffering**, and thereby contributing to the maintenance and promotion of human dignity and peace in the world.

The IFRC's work is guided by Strategy 2020 which puts forward three strategic aims:



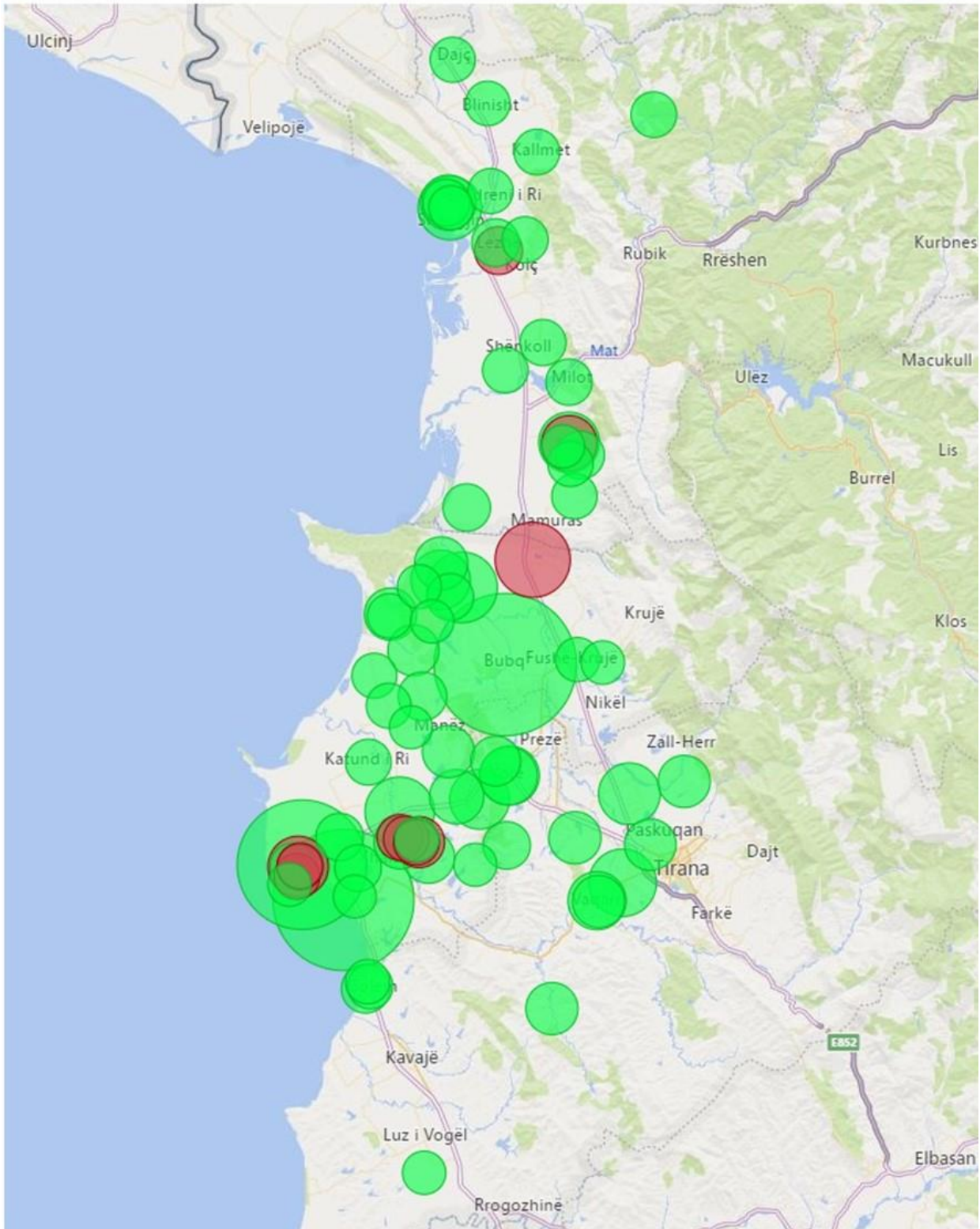
Save lives.
protect livelihoods,
and strengthen recovery
from disaster and crises.



Enable **healthy**
and **safe** living.



Promote **social inclusion**
and a culture of
non-violence and **peace**.



*Green circles represent active response locations; red circles are closed locations. Size of circle represents number of people reached per location. For details please see dashboard on [IFRC GO Platform](#).