

www.ifrc.org
Saving lives,
changing minds.

Operation Update

Philippines: Mindanao Earthquakes



Emergency appeal n° MDRPH036	GLIDE n° EQ-2019-000129-PHL
Operation update n° 2: 5 March 2020	Timeframe covered by this update: 31 October 2019 to 7 February 2020
Operation start date: 31 October 2019	Operation timeframe: 14 months End date: 31 December 2020
Funding requirements (CHF): 2,700,000	DREF amount allocated: CHF 598,467
N° of people being assisted: 34,176	
Red Cross Red Crescent Movement partners currently actively involved in the operation: The Philippine Red Cross (PRC) is working with the International Federation of Red Cross and Red Crescent Societies (IFRC) in this operation. PRC and IFRC will coordinate with the International Committee of the Red Cross (ICRC) on issues and movement in Mindanao areas.	
Other partner organizations actively involved in the operation: government of Philippines such as Philippine Institute of Volcanology and Seismology (PHILVOCS), National Disaster Risk Reduction and Management Council (NDRRMC), Department of Health (DOH), Department of Education (DepEd), Department of Energy (DOE), Armed Forces of the Philippines (AFP).	

A. SITUATION ANALYSIS

- 16 October 2019: A 6.3 magnitude earthquake struck Tulunan, Cotabato. PRC chapters from the affected areas started mobilizing their staff and volunteers to support the affected population.
- 29 October 2019: Another strong 6.6 earthquake struck Tulunan, Cotabato. IFRC requested a [DREF](#) allocation of CHF 223,467 to support PRC deliver assistance to 7,500 people during 4 months.
- 31 October 2019: Another strong 6.5 earthquake strikes Tulunan, Cotabato. Following first assessments, IFRC subsequently issues an [Emergency Appeal](#) for CHF 1.85 million to support PRC to deliver assistance to 35,500 people in 14 months. An additional CHF 200,000 (making the total CHF 423,467) is allocated as a DREF loan to the Emergency Appeal.
- 2 December 2019: IFRC issues a [revised Emergency Appeal](#) in the amount of CHF 2.1 million, consisting mainly of an increase in support to life-saving interventions as well as additional activities reflecting the latest field assessments results, as reported in the [revised Emergency Plan of Action](#). The Emergency Appeal must provide assistance to 35,500 people in 14 months.
- 15 December 2019: A 6.9 magnitude earthquake strikes in Matanao, Davao del Sur. PRC chapters from the affected area have mobilized their staff and volunteers to support the affected population.
- 19 December 2019: IFRC issues the [Operations update no. 1](#) and the [revised Emergency Appeal](#) for CHF 2.7 million to extend support into areas affected by the earthquake in Matanao, Davao del Sur; with the intention of delivering assistance to 40,500 people in 14 months. An additional CHF 175,000 (making the total CHF 598,467) was allocated as a DREF loan to the Emergency Appeal.
- 28 February 2020: IFRC issues Operations Update no. 2.

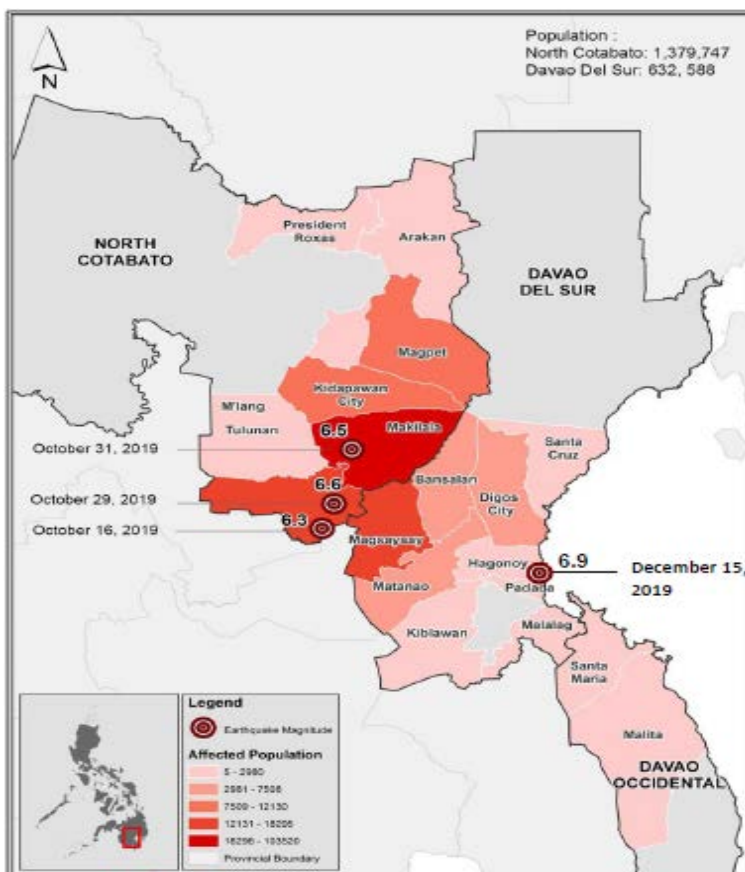
Description of the disaster

On 29 October 2019, two strong earthquakes struck the province of North Cotabato, Mindanao, the first one of magnitude 6.6 in Tuluna at 09:04; the second of magnitude 6.1 and 9km deep at 10:42 with almost the same epicenter. Just two days after, on 31 October 2019 at 09:15, another tectonic ¹ magnitude 6.5 earthquake shook central and eastern Mindanao at a shallow depth of two kilometres. Once again, the epicentre was identified in Tulunan, North Cotabato.² A state of calamity³ was declared for Davao del Sur on 30 October and Cotabato on 5 November, the two hardest hit provinces. These earthquakes, as well as the magnitude 6.3 earthquake recorded on 16 October 2019, with the same epicenter location, are considered part of a sequence of events resulting from interdependent faults in the region. No tsunami warnings were issued but many aftershocks, ranging from magnitude 1.5 to 5.5 were recorded. The [NDRRMC](#) most recent update on 22 January 2020, indicates the main impacts of the earthquakes as follows:



Displaced affected population are building their makeshift shelters in designated evacuation sites after they were asked to vacate their houses after the government declared it as no build zone.

(Photo: *Maryjane Flor Patulilic/IFRC*)



While the government authorities and humanitarian partners were providing humanitarian assistance to people in need, on 15 December, another 6.9 magnitude earthquake struck at 9km northwest of Matanao municipality in the province of Davao del Sur, Mindanao. This was the fourth quake above magnitude 6 in the last two months to hit this part of Mindanao, all within a radius of 12km. According to [PHILVOCS](#), although felt in the same areas, this latest earthquake did not emanate from the same fault as the October's series of temblors in Mindanao. However, the December earthquake compounded previous displacement as well as damage to homes, schools and infrastructure from the October earthquakes, as reported in the DSWD [DROMIC](#) report. A cumulative of 13 confirmed deaths, 210 injured and 1 missing was reported.

The plan of action for this emergency appeal was [revised](#) in December 2019 to provide a comprehensive response taking into account all geographical areas affected and escalating needs generated.

¹ [Types](#) of earthquakes and faults

² Philippine Institute of Volcanology and Seismology ([PHIVOLCS](#))

³ State of calamity, Republic Act no. 10121 – [implementing rules and regulations](#)

Earthquakes	Earthquake on 29 October – 6.3M Earthquake on 29 October – 6.6M Earthquake on 31 October – 6.5M (source: NDRRMC , 22 January 2020)	Earthquake on 15 December – 6.9M (Source: NDRRMC , 10 January 2020)
Affected	71,247 families (349,266 people), 362 barangays, Regions XI and XII	86,548 families (394,355 people), 218 barangays, Regions XI and XII
Displaced – Inside Evacuation Centre	13,073 families (60,130 people) in 107 evacuation centres in Regions XI and XII	9,269 families (35,698 people) in 102 evacuations centers in Regions XI and XII
Displaced – Outside Evacuation Centre	25,812 families or 125,609 persons staying with relatives and/or friends	23,207 families (99,982 people) staying with relatives and/or friends
Casualties and injured	23 dead, 563 injured, 11 missing	13 dead, 210 injured and 1 missing
Houses damaged	26,025 totally, 23,665 partially	7,324 totally, 37,761 partially
Schools damaged	37 totally, 1,508 partially	397 partially damaged
Health facilities damaged	50 totally, 224 partially	98 health facilities

Funding situation

At the time of writing, the Emergency Appeal is 45 per cent covered with donor's hard pledges⁴. The American Red Cross, the British Red Cross, the Canadian Red Cross Society (from Canadian government), the Finnish Red Cross, the Hong Kong branch of Red Cross Society of China, the Japanese Red Cross Society, the Red Cross of Monaco, the Netherlands Red Cross (from Netherlands government), the Spanish government, the Swedish Red Cross and the Turkish Red Crescent Society have committed to financially support the operation. On behalf of Philippine Red Cross, IFRC would like to thank these partners for their immediate response to the Appeal. As the Emergency Appeal currently is significantly underfunded, PRC and IFRC are calling on partners to provide support to enable the provision of assistance to the affected population.

Summary of current response

Overview of Host National Society







Since first earthquakes in October, the Philippines Red Cross (PRC) Operations Centre (OpCen) has been collecting information – from the chapters and Red Cross 143 volunteers in the areas – and issuing disaster incident updates. The PRC Communications teams has been posting updates and photos of the situation on [Facebook](#) and [Twitter](#).

Response Teams such as the Philippine Red Cross Action Team (RCAT143) and the National Disaster Response Team (NDRT) as well as other personnel from the PRC, specialized in relief, shelter, water, sanitation and Hygiene (WASH), health and welfare, have been deployed. Other PRC chapters such as Compostela Valley Cotabato City, Davao del Sur, General Santos City, North Cotabato, South Cotabato and Sultan Kudarat have been supporting the response.

PRC headquarters and local chapters are coordinating with the national and provincial DRRMCs respectively. In October and November, PRC had conducted rapid and in-depth assessments using teams comprised of multisector personnel from NHQ and chapters. Following the earthquake on 15 December 2019, PRC OpCen was activated, a medical team deployed in the field as well as search and rescue, rapid assessment and relief delivery teams. The action plan was revised following the new situation.

⁴ See [Donor response](#) for more recent updates.

As of 7 February 2020, PRC had been able to carry out the following activities to respond immediately to basic needs:

Sector	Actions taken
First Aid 	<ul style="list-style-type: none"> • 16 first aid stations established • 8 ambulances mobilized • 11 individuals assisted and transported • 91 individuals reached with first aid management • 777 individuals assisted through blood pressure taking
Psychosocial support 	<ul style="list-style-type: none"> • 13 evacuation centers/sites served with welfare desk • 7,462 Individuals reached through psychosocial support program (psychological first aid: 2,777; child-friendly spaces: 4,685)
Livelihoods and basic needs 	<ul style="list-style-type: none"> • 18,493 individuals served with hot meals and bread • 13 communal kitchens constructed • 1,457 families were provided with multi-purpose cash grants
Emergency shelter and household items 	<ul style="list-style-type: none"> • 4,970 families provided with food packs • 4,059 families provided with sleeping kits • 3,369 families provided with tarpaulins (emergency shelter) • 100 families provided with tents
Water, sanitation and hygiene 	<ul style="list-style-type: none"> • 4,572,326 litres of water distributed • 13,781 people reached with hygiene promotion • 65 portable toilets, 8 transitional toilets and 26 shower facilities installed • 18 water bladders installed for water provision • 5 water tankers (Davao City, GenSar, Iligan and NHQ) and 2 water treatment units mobilized to support water provision • 3,572 families provided with hygiene kit • 3,676 families provided with jerry cans
Manpower and assets mobilized 	<ul style="list-style-type: none"> • Local and national assessment teams, first aid/medical team, and welfare team, extrication team and WASH team deployed to support the operation • 27 vehicles mobilized (2 PRC NHQ Trucks, 1 chapter truck, 2 rented trucks, 5 water tankers, 8 ambulances, 6 service vehicles, 3 hot meals vans)

Philippines is one of the most disaster-prone country in the world. In 2019 to 2020, PRC has managed operations supported through the IFRC's Disaster Relief Emergency Funds (DREF) and the Emergency Appeal (EA) mechanisms in response to earthquakes (Batanes), typhoons (Mangkut, Kanmmuri, Phanfone), disease outbreaks (dengue, measles, polio, and coronavirus) and volcano eruption (Taal volcano). The National Society has gained extensive experience in response and recovery and, given its mobilization capacity and acceptance with communities and the government, is well placed to respond in Mindanao.

Overview of Red Cross Red Crescent Movement in country

The PRC leads the overall response operation for the Movement, maintaining close coordination with Movement partners in the country and providing updates. In addition to the IFRC, a significant number of Movement partners are present in the country: ICRC, the American Red Cross, the Canadian Red Cross Society, the Finnish Red Cross, the German Red Cross, the Japanese Red Cross Society, the Netherlands Red Cross and the Spanish Red Cross.

The IFRC country office (CO) is supporting PRC with disseminating updates to Movement partners with in-country presence and coordinating with the Asia Pacific Regional Office (APRO) in Kuala Lumpur, in line with the Emergency Response Framework of the IFRC Secretariat's. The IFRC Philippines CO also coordinates with Partner National Societies (PNS) and remains in close contact with the ICRC for any security-related issues in Mindanao. An information bulletin was published on 30 October 2019. The same day, the PRC, through the IFRC Philippines CO requested a DREF activation of CHF 223,467, which was approved on 31 October 2019. This was expanded to an Emergency Appeal on 4 November 2019, to address growing humanitarian needs after the third earthquake of 31 October. A revision of this Emergency Appeal was issued on 2 December 2019, to incorporate the findings of in-depth assessments and needs identified.

During this reporting period, the Emergency Appeal and the Emergency Plan of Action (EPoA) were revised again, this time to cover new geographical areas and meet the growing needs following the 15 December earthquake in Matanao, The Emergency Appeal was therefore revised to CHF 2.7 million (previously CHF 2.1 million) to extend support to the areas affected by the earthquake in Matanao, Davao del Sur, with the intention of providing assistance to 40,500 people (previously 35,500 people) in 14 months. An additional CHF 175,000 (for total of CHF 598,467) was allocated as a

DREF loan to the Emergency Appeal to cover the operational costs of initial mobilization such as assessment, first aid, psychosocial support, search and rescue, WASH, welfare desks and emergency shelter and essential items for 1,000 more households.

Overview of non-RCRC actors in country

Coordination with the authorities

As an auxiliary to the government, the PRC maintains strong relationships and collaboration with governmental bodies. The PRC headquarters in Manila and the local chapters coordinate closely with national, provincial and local disaster risk reduction and management councils, respectively NDRRMC, PDRRMC and LDRRMC as well as with other government institutions such as the Philippine Institute of Volcanology and Seismology (PHILVOCS), the Department of Health (DOH), the Department of Education (DepEd), the Department of Energy (DOE), and the Armed Forces of the Philippines (AFP). In this operation, the PRC and the IFRC maintain ongoing coordination with the local government units, schools and other stakeholders at the barangay, municipal, provincial and national levels. PHIVOLCS continuously monitor seismic events and publishes information and real-time updates on earthquakes. The NDRRMC coordinates with the city, provincial, municipal, and barangay disaster risk reduction and management councils and issues status reports. The [NDRRMC](#) releases advisory on earthquake information.

Inter-agency coordination

At country level, the PRC and the IFRC are observers to, and participate in, the Humanitarian Country Team (HCT) meetings held in both disasters and non-emergency situations. PRC and IFRC are involved in relevant government-led cluster information sharing, planning, and analysis at all levels while IFRC supports PRC coordination efforts through representation in other relevant clusters, where appropriate. OCHA continues to develop [flash updates](#).

The IFRC is co-lead of the Shelter Cluster with the government lead agency Department of Social Welfare and Development (DSWD). The IFRC coordination focal point in country coordinates with OCHA and sector partners on inter-agency rapid needs assessments in affected areas. For the Mindanao earthquakes, the following agencies carried out rapid assessments: CRS and Caritas Philippines launched a joint initial rapid assessment in the Tulunan – Kidapawan areas; PRC in Davao del Sur and North Cotabato; Citizens Disaster Response Centre, with local partners MISFI and DIRECT in Davao del Sur and North Cotabato; Shelter Box; Plan International and ACTED. PDRF (the Philippine Disaster Resilience Foundation, the largest private sector platform in country) and its partner AirAsia has been providing logistical support to the government for the transport of shelter related items. At the time of reporting, at least 15 Shelter Cluster partners had been responding in North Cotabato and Davao del Sur with emergency shelter and household essential items. Among the recently published assessment reports on the Mindanao earthquake's response is the UNHCR-Protection Cluster's IDP [Protection Assessment Report](#) and OCHA's Information, Communication and Accountability Assessment report (ICAA).

Needs analysis and scenario planning

Needs analysis

From 29 October to 9 November 2019, the PRC deployed two rapid damage and needs assessment (RDANA) teams (each including NDRTs and RCATs) in Davao del Sur and North Cotabato. The main findings from these assessments were shared on 12 November 2019. In addition to these rapid assessments, PRC needs analysis and action plan development were based on secondary data, including updates from the NDRRMC, DSWD and local disaster risk reduction and management councils, situation reports by clusters and media reports⁵. The first assessments and secondary data identified food, health (including psychosocial support); shelter, WASH, as well as emergency education and protection to be prioritized to meet the immediate needs of those affected by the earthquakes. Furthermore, an in-depth assessment deployment was conducted from 19 to 28 November 2019. Two teams were mobilized respectively in Davao del Sur and North Cotabato. The in-depth assessment validated the information gathered from the RDANAs, and informed PRC further on the extent of damage to shelter, livelihoods, WASH and health. The assessment identified the most vulnerable groups to be targeted amongst the affected population; and engaged in consultation with these individuals to ensure that the design of the interventions was relevant to their priority needs.

Following the magnitude 6.9 earthquake of 15 December, a third RDANA assessment was carried out, which led to a second revision of the Emergency Appeal and the EPoA. This latest strong earthquake exacerbated the humanitarian situation of the people of Mindanao and necessitated an expansion of the PRC response in the newly affected areas to support those affected. The municipalities of Matanao and Padada, which were particularly affected are among the

⁵ As example, the Mindanao Humanitarian Team's Impact and needs assessment [report](#).

poorest in the province of Davao del Sur; with a large part of the population already vulnerable before it struck. The priority needs included education during emergencies, food, health (including psychosocial support), protection, shelter, and water, sanitation and hygiene (WASH).

For details on the **summary of the needs analysis**, the **targeting and scenario planning** as well as the **operational risks**, please refer to the [Emergency Plan of Action](#) (2 December 2019) and the [revised Emergency Plan of Action](#) (9 January 2020).

B. OPERATIONAL STRATEGY

Overall Operational objective

This operation aims to meet the immediate and early-recovery needs of the most vulnerable of the affected population in North Cotabato and Davao del Sur provinces. Taking into account the 15 December earthquakes with new areas and population affected, a total of 40,500 people (8,100 families) will be supported with health, WASH and welfare services, 3,000 families with unconditional multi-purpose grants, and 3,000 families with food, essential household items and shelter assistance. Early recovery, focused on livelihoods and shelter inputs accompanied with technical assistance, will be provided to support the safety, dignity and resilience of 325 families. The revised Emergency Appeal contributes to the overall PRC plan of action for their response to the earthquakes. The operation will be implemented within 14 months and is expected to be completed by 31 December 2020.

The geographical areas targeted by this operation are the most affected municipalities in the provinces of Davao del Sur (Bansalan, Hagonoy, Magsaysay and Matanao) and North Cotabato (Kidapawan, Makilala and Tulunan). Included now are the municipalities of Matanao and Padada, as well as other surrounding locations that have been affected by the earthquake that struck on 15 December 2019. Emphasis will be placed on supporting those areas which are not being supported by other agencies; especially those in rural upland areas which were underserved prior to the earthquake. Priorities identified have also been based on the following criteria:

- poverty incidence
- province, city, municipality classification;
- extent of damages to both shelter and livelihoods
- number of displaced families inside evacuation centres
- support or assistance received;
- coping mechanisms



PRC staff talks with the local government staff who is in charge in the camp development. PRC maintains a strong coordination with local authorities in identifying needs and gaps of the affected population.

(Photo: Maryjane Flor Patulilic/IFRC)

The operation is underpinned by a commitment to quality programming that involves:

- Continuous and in-depth assessments and analyses to inform the design and ongoing implementation of the programme.
- Ongoing process of adjustments based on these assessments.
- Adherence to PGI measures, with focus on disability inclusive development.
- Awareness of the impact of climate change and promotion of climate smart solutions as part of the operations, including their integration in trainings programs, as appropriate (health, livelihoods, shelter and WASH)
- Establishment of mechanisms to facilitate two-way communication with, and ensure transparency and accountability to, disaster-affected people, and highlighting the nature of communication and information as a life-saving mechanism. Establishment of mechanisms to facilitate two-way communication with, and ensure transparency and accountability to, disaster-affected people, highlighting with them the importance of communication to/with communities, and how information be lifesaving. Consultation is then had to determine their requirements around communication and information, before being integrated into the interventions.

- Alignment with migration and displacement policies, including the Movement Policy on Internal Displacement (2009).
- Management and delivery of the programme will be informed by appropriate monitoring and evaluation.
- Market assessments will be integrated with the in-depth assessment as cash-based interventions are being considered based on the needs and feasibility.
- A post-distribution monitoring exercise on cash-based interventions, particularly on the multi-purpose cash grant, to measure impact and timeliness of cash transfer programmes.

It is to be noted that the implementation of this Emergency Plan of Action is based on the funding received, the prioritization of interventions made in consultation with the government authorities and other agencies, as well as, and most critically the targeted families themselves.



Mindanao Earthquake: Operations Update

February 2020



45%
funded



IFRC has been supporting the humanitarian response of PRC in the provinces of Davao del Sur and North Cotabato following the series of strong earthquakes in Mindanao.



SHELTER

12,500

People Reached

Main Activities

- Distributed sleeping kits to 2,500 families
- Distributed tarpaulins to 2,500 families



LIVELIHOODS

18,493

People Reached

Main Activities

- Distributed cash to 1,457 families
- Provided 18,493 ready to eat food / hot meals
- 13 communal kitchen constructed



HEALTH

34,176

People Reached

Main Activities

- Set-up 5 EMUs and catered 14,214 patients
- 2,777 people provided with PSA
- Distributed mosquito nets to 2,500 families



WASH

38,444

People Reached

Main Activities

- Distributed 4.57 million litres of water
- Distributed jerry cans to 2,000 families
- Conducted hygiene promotion to 13,781 people



PGI

38,444

People Reached

Main Activities

- 2,267 students provided with safe educational space in temporary learning centers
- 4,685 children were reached with PSS through Child Friendly Spaces sessions



MIGRATION

38,444

People Reached

Main Activities

- 13 evacuation sites were serviced by PRC's Welfare Desks to assist the displaced people
- Facilitated one tracing request and four people re-established contact with relatives



Shelter

People reached: 12,500

Male: 6,250

Female: 6,250

Shelter Outcome 1: Communities in disaster and crisis affected areas restore and strengthen their safety, well-being and longer-term recovery through shelter and settlement solutions

Indicators:	Target	Actual
# of affected families in seven municipalities provided with essential household items and emergency shelter	3,000	2,500

Shelter Output 1.1: Shelter and settlements and basic household items assistance is provided to the affected families.

Indicators:	Target	Actual
# of affected families provided with sleeping kits (essential household items)	3,000	2,500
# of affected families provided with tarpaulins (emergency shelter)	3,000	2,500
# of affected families provided with shelter toolkits	1,500	cancelled
# of affected families provided with shelter assistance through conditional cash grants	70 (reduced from 325)	planned

Progress towards outcomes

PRC has been providing essential household items to the affected population, especially those who are displaced in different evacuation centres. In Davao del Sur and North Cotabato, the PRC has provided 6,738 tarpaulins to 3,369 families (two tarpaulins per family). Of this number, 5,000 tarpaulins (2,500 families) or about 74 per cent of the items distributed were financed by the Appeal.

The PRC also provided at least 4,059 families with a sleeping kit (including two mats, two mosquito nets and two blankets). Approximately 62 per cent of these sleeping kits provided was funded by the Emergency Appeal (for 2,500 families).

Breakdown of families reached by PRC with IFRC support

Province	Municipality/City	Blankets	Mosquito Nets	Sleeping Mats	Tarpaulins
North Cotabato	Kidapawan City	464	386	464	149
	Makilala	1,012	1,012	1,012	946
Davao del Sur	Bansalan	339	339	339	339
	Digos City	120	120	120	120
	Hagonoy	158	158	158	-
	Kiblawan	410	410	410	-
	Magsaysay	766	766	766	766
	Matanao	868	868	868	925
	Padada	-	-	-	124
Grand Total		4,137	4,059	4,137	3,369

Note that the distribution of shelter tool kits will no longer be requested through the Emergency Appeal, as they are being covered by contributions received from the ICRC.

A total of 70 families will be targeted with early recovery shelter assistance in Davao del Sur and North Cotabato. This is a reduction compared to the 325 families initially targeted, and which follows coordination efforts with the Shelter Cluster (at time of writing, there were 15 members responding to the Mindanao Earthquakes), and identification of priority needs and gaps. It has been agreed that PRC will support those families whose homes were partially or totally destroyed but are not located in the "no build" zones and are able to return. Thus far, the PRC have begun coordination with the authorities and Shelter Cluster members; as well as orientation of communities on the interventions planned, selection and validation of targeted families. This will be followed by detailed planning when the schedule for the distribution of conditional cash grants, inputs (CGI sheets, etc.) and technical support will be agreed on. Note that the actual transfer value for the conditional cash grant is under discussion, and tentatively

proposed for budgeting purposes at PHP 100,000 (approximately CHF 1,960). This will be set during the selection and validation process, including the any differential in amount to be distributed to families whose homes were partially or totally destroyed. It is intended that it will be issued in two tranches; and will cover shelter construction and complementary sanitation facilities (latrines and handwashing). Experience and lessons learnt from recent other operations such as Typhoon Mangkhut ([MDRPH029](#)), where PRC has implemented similar interventions will be considered in the implementation of the early recovery assistance. There will be continued collaboration with the authorities and the Shelter Cluster members to avoid any duplication, as well as, where appropriate, the standardization of the conditional transfer amount and technical guidelines being used.

Shelter Output 1.2: Technical support, guidance and awareness raising in safe shelter design and settlement planning and improved building techniques are provided to affected households

Indicators:	Target	Actual
# of families with basic shelter awareness and 325 families with technical support and guidance on safe recovery shelter.	2,500 (reduced from 3,000); and 70 (reduced from 325)	planned
# of carpenters provided with technical support and guidance, appropriate to the shelter assistance they provide	20 (reduced from 75)	planned
# of volunteers and staff provided with technical support and guidance, appropriate to the shelter assistance they provide	50	planned
Progress towards outcomes		
As noted above, the number of targeted families for early recovery shelter assistance has been reduced from 325 to 70. As a result, the number of carpenters required for the intervention has been reduced from 75 to 20 accordingly.		



Livelihoods and basic needs

People reached: 18,493

Male: 7,552

Female: 7,552

Livelihoods and basic needs Outcome 1: Communities, especially in disaster and crisis affected areas, restore and strengthen their livelihoods

Indicators:	Target	Actual
# of affected families able to meet their basic needs (with cash transfers for one month)	3,000	1,457
# of affected families whose livelihoods are restored to pre-disaster level (household livelihood assistance)	900 (increased from 325)	planned
Livelihoods and basic needs Output 1.2: Basic needs assistance for livelihoods security including food is provided to the most affected communities		
Indicators:	Target	Actual
# of hot meals provided	6,000	18,493
# of communal kitchen units installed in evacuation centres	13	13
Progress towards outcomes		

Since the earthquakes, the PRC has served a total of 18,493 people with hot meals, all funded by the Emergency Appeal while 4,970 families have received food parcels (one per family), in Davao del Sur and North Cotabato, including 1,951 parcels financed by the IFRC. Each food parcel includes 5kgs of rice, five canned goods and five noodle packs.

To reduce the risk of fire and ensure the safety of families when cooking, 13 units of communal kitchens were constructed in six different evacuation areas in Davao del Sur and North Cotabato. The shared kitchens include drainage and waste disposal facilities.



A PRC volunteer carries relief items, preparing for a mass distribution to the affected population.

(Photo: France Noguera/IFRC)

Breakdown of evacuation sites where PRC constructed communal kitchens

Province	Municipality/City	Place Name	Quantity
North Cotabato	Makilala	Santos Land Evacuation Center	2
	Makilala	Luayon Evacuation Center	2
Davao del Sur	Digos City	Balabag Evacuation Center	2
	Magsaysay	San Miguel Evacuation Center	3
	Magsaysay	Upper Bala	2
	Matanao	Asinan Evacuation Center	2

A total of 900 families will be targeted with early recovery livelihoods assistance in the provinces of Davao del Sur and North Cotabato. This is an increase from the 325 families initially targeted, which can be accommodated following the reduction in number of families being targeted by early recovery shelter assistance (see above).

Thus far, the PRC have begun coordination with the authorities and partner organizations; as well as orientation of communities on the interventions planned, selection and validation of targeted families. This will be followed by detailed planning when the schedule for the distribution of conditional cash grants, inputs (seeds, etc.) and technical support will be agreed on. Note that the actual transfer value for the conditional cash grant is under discussion; and tentatively proposed for budgeting purposes at PHP 10,000 (approximately CHF 196). This will be set during the selection and validation process. It is intended that it will be issued in two tranches.

Experience and lessons learnt from other operations such as Typhoon Mangkhut ([MDRPH029](#)), where PRC has implemented similar interventions will be considered in the implementation of the early recovery assistance. There will be ongoing collaboration with the authorities and partner organizations to avoid any duplication, as well as where appropriate the standardization of the conditional transfer amount and technical guidelines being used.

Livelihoods and basic needs Output 1.3: Household livelihoods security is enhanced through food production, increased productivity and post-harvest management (agriculture-based livelihoods)

Indicators:	Target	Actual
# of affected families reached with awareness activities and education on sustainable livelihoods through CMLP and HLA	900 (increased from 325)	planned
# of affected families provided with conditional cash grants through HLA	900 (increased from 325)	planned
# of communities receiving support through the CMLP that report improved net income through skill building	TBD	planned
Progress towards outcomes		

As noted above, the number of targeted families for early recovery livelihoods assistance has been increased from 325 to 900 and the interventions are currently being planned. The municipalities of Digos City, Kiblawan, Magsaysay

and Matanao will be targeted in Davao del Sur (500 families); while the selection of municipalities in North Cotabato (400 families) is currently in progress and will be reported on in the next Operations Update.

Livelihoods and basic needs Output 1.5: Households are provided with unconditional/multipurpose cash grants to address their basic needs

Indicators:	Target	Actual
# of affected families provided with multipurpose cash grants to address their basic needs	1,457 ⁶ (reduced from 3,000)	1,457

Progress towards outcomes

Affected families previously identified received cash support to secure their immediate needs. The cash was distributed to families using a pre-identified financial service provider, which was previously used by PRC for another operation. Each family received a sum of PHP 3,500 (approximately CHF 70), which will help them meet their basic needs for one month. The distribution was originally scheduled for mid-December 2019. However, due to weather disruptions and additional operations, the distribution was delayed until end of January 2020. The distribution has now been completed, and final recipient lists being confirmed. The actual breakdown of families that received cash assistance will be confirmed in the next Operations Update; however, below is a summary of those targeted. A post distribution monitoring exercise will be initiated to identify the use of the cash assistance by the affected families, and their satisfaction with the approach used. Note that the number of families targeted with cash assistance has been reduced from 3,000 to 1,457 based on the income received into the Emergency Appeal.

Breakdown of families provided with cash assistance

Province	Municipality	Number of identified beneficiaries
Davao del Sur	Makilala	734
North Cotabato	Magsaysay	723
Total		1,457



Health

People reached: 34,176

Male: 17,088

Female: 17,088

Health Outcome 1: The immediate risks to the health of affected populations are reduced

Indicators:	Target	Actual
# of people reached through National Society emergency health management programmes	17,500	34,176 ⁷

Health Output 1.1: The health situation and immediate risks are assessed using agreed guidelines

Indicators:	Target	Actual
# of health assessments carried	2	2

Progress towards outcomes

Health needs were assessed during the RDNA, confirming the need for first aid and psychosocial support. The results of the in-depth assessments conducted at the end of November 2019, including the damaged health infrastructure, helped to refine the response strategy.

⁶ Reduced from 3,000 targeted families based on income received into the Appeal.

⁷ 14,214 patients catered in EMUs + 12,500 for community-based epidemic prevention and control activities + 7,462 for PSS.

Health Outcome 2: The immediate risks to the health of the affected populations are reduced through improved access to medical treatment

Indicators:	Target	Actual
# of ambulances mobilized to provide immediate transportation of patients	8	8
# of people assisted with blood pressure (BP) readings	-	777
# of people provided with first aid	-	91
# of volunteers mobilized to support immediate health related activities	25	10 ⁸
# of families provided with first aid kits	200	-
# of chapters provided with chapter first aid kits (jump kits)	3	in progress
# of patients catered through Emergency Medical Units, run by PRC	102	14,214

Progress towards outcomes

The PRC has set up 16 first aid stations, funded by the Emergency Appeal, helped 91 people with first aid and assisted 777 with their blood pressure readings since the start of the emergency operation. Eight ambulances were mobilized in Compostella Valley, General Santos, Davao City, Cotabato City, Davao Del Sur, Dipolog and South Cotabato and 11 people were assisted, and transported to nearby hospitals.

At the request of the local government and the DOH, PRC set up five Emergency Medical Units (EMUs) in Kidapawan City, North Cotabato to deal with the health problems caused by the closure of several hospitals in Mindanao. The EMUs' tents have been installed with the following functions: tent one serves as a paediatric ward for children; tent two as an emergency room, tent three as a male's ward, tent four as a female's ward and tent five as a delivery/labour room.



PRC provides staff support in the EMUs by deploying volunteers. Volunteers support the health staff with monitoring and attending patients' needs. (Photo: Maryjane Flor Patulilic/IFRC)

The health team (nurses) continuously provides support in the EMUs at Kidapawan City Hospital within four months since the set-up of the EMU. There are 10 volunteers supporting the operation daily inside the EMUs. Since the set-up of the EMU in November 2019, a total of 14,214 patients have been treated. Most of the health problems of admitted patients are: diarrhea, fever, cough and colds.

The need to provide households with first aid kits is under review, taking into consideration the prolonged displacement and coordination with government and humanitarian clusters.

Health Outcome 4: Transmission of diseases of epidemic potential is reduced

Indicators:	Target	Actual
# of people reached with community-based epidemic prevention and control activities including vaccine preventable diseases information and referral services	17,500	12,500 ⁹

Health Output 4.1: Community-based disease control and health promotion is provided to the target population

Indicators:	Target	Actual
-------------	--------	--------

⁸ Ten volunteers per day is supporting the operation inside the EMU

⁹ People reached with mosquito nets and messages on epidemic prevention and control

# of volunteers provided with health-related trainings	120	not started
# of women provided with mother and new-born baby kits	500	cancelled

Progress towards outcomes

Note that the distribution of mother and new-born baby kits has been cancelled, as this is now being covered by other partner organizations responding to the Mindanao Earthquakes.

Health Output 4.2: Vector-borne diseases are prevented

Indicators:	Target	Actual
# of families received mosquito nets	3,000	2,500

Progress towards outcomes

To reduce the risk of epidemics, 8,118 mosquito nets were distributed, of which 5,000 (2,500 families) or 60 per cent from the overall distribution were financed by the Emergency Appeal. Mosquito nets were distributed as part of the sleeping kits consisting of two mats, two blankets and two mosquito nets. Families receiving mosquito nets have all received messages on epidemic prevention and control. Other awareness-raising activities on these same topics will be conducted with the affected population. Health teams work closely with WASH to ensure a healthy environment for displaced people in evacuation centres.

Health Outcome 6: The psychosocial impacts of the emergency are lessened

Health Output 6.1: Psychosocial support provided to the target population as well as to RCRC volunteers and staff

Indicators:	Target	Actual
# of people provided with psychosocial support	Need based	7,462

Progress towards outcomes

To help affected families, 13 welfare desks have been set up in evacuation centres (one in each). Welfare desks assist displaced people with: i) restoring family links (RFL); (ii) tracing; (iii) inquiry and communications; (iv) contact of relatives; and (v) referral.

The psychosocial support programme, financed by the Emergency Appeal has reached 7,462 people¹⁰. Of these, 2,777 people received psychological first aid assistance and 4,685 children participated in child friendly space activities.

Breakdown of people provided with psychosocial support

Province	Municipality/Province	Psychological first aid		Child friendly space	
		Male	Female	Male	Female
Davao Sur	Bansalan	204	245	248	442
	Digos City	64	124	97	98
	Hagonoy	41	214	113	185
	Magsaysay	40	210	477	599
	Malalag	-	-	18	32
	Matanao	23	48	251	276
North Cotabato	Kidapawan City	285	463	272	359
	Makilala	325	480	497	554
	Malasila	8	3	73	94
Grand Total		990	1,787	2,046	2,639

¹⁰ Data source: Welfare Service Report



Water, sanitation and hygiene

People reached: 38,444

Male: 19,222

Female: 19,222

WASH Outcome1: Immediate reduction in risk of waterborne and water related diseases in targeted communities

Indicators:	Target	Actual
# of people provided with safe water services that meet agreed standards according to specific operational and programmatic context	40,500	38,444 ¹¹
# of people provided with hygiene promotion aimed at reducing the risk of waterborne and water related diseases	40,500	13,781

WASH Output 1.1: Continuous assessment of water, sanitation, and hygiene situation is carried out in targeted communities

Indicators:	Target	Actual
Initial assessment of water, sanitation and hygiene situation conducted	1	1

Progress towards outcomes

WASH-related needs were assessed during the RDANA. PRC identified several problems such as some non-functional water systems and some non-potable sources of water in some areas, as well as limited knowledge of families in water treatment. Since the establishment of the evacuation centres, PRC has closely monitored several of them (currently 60 per cent), including conducting WASH assessments and carrying out water analysis.

WASH Output 1.2: Daily access to safe water which meets Sphere and WHO standards in terms of quantity and quality is provided to target population

Indicators:	Target	Actual
# of mass water treatment, storage and transport modules deployed	1	2
# of litres of safe water distributed	-	4,572,326
# of families provided with jerry cans (10L)	3,000	2,000

Progress towards outcomes

To meet immediate water needs, PRC has installed 18 water bladders for water supply in North Cotabato (barangays Ilumavis and Hinalitan, Kidapawan city), and Davao del Sur (Barangays Balnate and San Miguel; Magsaysay). Five water tankers (Davao City, General Santos, Iligan and NHQ) and two water treatment units (Davao City and General Santos) were also mobilized to support water supply. To date, 3,676 families have received jerry cans (20L and 10L) in Davao del Sur and North Cotabato, including the distribution of 4,000 jerry cans (10L) to 2,000 families through the Appeal. Note that the target under the Emergency Appeal has not been achieved as PRC received funding from other sources, resulting in the number of jerry cans mobilized being reduced from 6,000 to 4,000.



Water points are set up by PRC to ensure access to safe drinking water for displaced population. (Photo: France Noguera/IFRC)

¹¹ The number of people served with distributed water is an estimate and should be viewed with caution at this time. These may change when aggregated data on the scope of water sanitation services from other partners in the same evacuation centres becomes available and validated. The IFRC and its partners are dedicated and aim to meet the Sphere minimum standards.

A total of 4,572,326 litres of water have been distributed by PRC to 38,444¹² people at collecting points in Davao del Sur and North Cotabato¹³. Water supply activities have been funded by the Emergency Appeal. PRC volunteers have provided sensitization on safe water storage and utilization at the point of distribution.

Breakdown of areas provided with water and jerry cans

Province	Municipality/City	Litres of water distributed	No. of water bladder units installed	No of families reached with jerry cans
Davao Del Sur	Bansalan	90,000	-	238
	Digos City	225,750	-	240
	Hagonoy	6,000	-	-
	Magsaysay	823,928	11	945
	Matanao	21,000	-	957
	Padada	21,000	-	-
North Cotabato	Kidapawan City	2,156,648	4	-
	Makilala	1,228,000	3	1,296
Grand total		4,572,326	18	3,676

WASH Output 1.3: Improved access to and use of adequate sanitation is provided to target population

Indicators:	Target	Actual
# of people who benefitted from the sanitation facilities in selected evacuation centres	7,500	17,949 ¹⁴
# of latrines provided	73	65
# of shower facilities provided	30	26
# of handwashing stations provided	-	65

Progress towards outcomes

PRC installed 65 portable toilets (serving up to 15,223 people) with 65 handwashing stations and 26 shower facilities all funded through the Emergency Appeal, an additional 8 transitional toilets (serving up to 1,172 people) as well as 41 water collecting points, also in Davao del Sur and North Cotabato. Note that the sanitation facilities installed by PRC have been complemented by those provided by the authorities and partner organizations that are operating in the camps to ensure that service provision is in accordance with the minimum standards for excreta disposal.

WASH Output 1.4: Hygiene promotion activities which meet Sphere standards in terms of the identification and use of hygiene items provided to target population

Indicators:	Target	Actual
# of people reached by hygiene promotion activities	40,500	13,781
# of volunteers involved in hygiene promotion activities	20	-

Progress towards outcomes

The PRC WASH unit conducted hygiene promotion activities with 13,781 people. All of which were reached through activities funded with the Emergency Appeal. The key topics and messages conveyed during the emergency phase are hygiene practices, solid and waste management, and diarrhea prevention.

WASH Output 1.5: Hygiene-related goods (NFIs) which meet Sphere standards and training on how to use those goods is provided to the target population

Indicators:	Target	Actual
# of families provided with hygiene kits	3,000	2,200

Progress towards outcomes

¹² PRC WASH Updates

¹³ Note that this equates to on average of approximately six days of water supply for each person based on [Sphere standards](#) of 15 litres per person per day in emergencies. This may change based on number of days each individual is accessing the water point.

¹⁴ The number of people served with latrines and showers is an estimate and should be viewed with caution at this time. These may change when aggregated data on the scope of water sanitation services from other partners in the same evacuation centres becomes and validated. The IFRC and its partners are dedicated and aim to meet the Sphere minimum standards.

A total of 3,572 families were provided with a hygiene kit in Davao Del Sur and North Cotabato. Each hygiene kit includes 12 pieces of body soap, five laundry soaps, 40 sanitary pads, five bath towels, six rolls of toilet paper, three toothpaste tubes, five toothbrushes and four disposable razors. Of these hygiene kits provided to families, 2,200 were funded by the Emergency Appeal. Note that the target under the Emergency Appeal has not been achieved as PRC received funding from other sources, resulting in the number of hygiene kits mobilized being reduced from 3,000 to 2,200.

Province	Municipality/City	Number of families reached
Davao Del Sur	Bansalan	339
	Digos City	120
	Hagonoy	158
	Kiblawan	410
	Magsaysay	339
	Matanao	507
North Cotabato	Kidapawan City	699
	Makilala	1,000
Grand total		3,572



Protection, Gender and Inclusion

People reached: 38,444

Male: 19,222

Female: 19,222

Protection, Gender & Inclusion Outcome 1: Communities identify the needs of the most vulnerable and particularly disadvantaged and marginalised groups, as a result of inequality, discrimination and other non-respect of their human rights and address their distinct needs

Indicators:	Target	Actual
# of people provided with any Protection, Gender and inclusion (PGI) services	10,000	38,444

Protection, Gender & Inclusion Output 1.1: Programmes and operations ensure safe and equitable provision of basic services, considering different needs based on gender and other diversity factors

Indicators:	Target	Actual
# of children provided with safe educational space in temporary learning centers	-	2,267
# of teachers provided with training on safe teaching and alternative delivery methods	120	-
# of children provided with school kits	1,000	cancelled

Progress towards outcomes

On November 18, PRC deployed 10 temporary learning spaces (TLS) in the two most affected provinces, North Cotabato and Davao del Sur, to ensure the continuity of education where schools had been damaged. Each tent can accommodate 40 to 50 students. About 1,000 schools have been damaged by the earthquakes and classes of at all levels in three regions remain suspended to date.

Indirectly, all people supported in this operation has been provided with different services based on protection, gender and inclusion (PGI) considerations and standards.

PRC's PGI team is conducting monitoring visits to the project areas to ensure that the implementation of activities in all sectors are being carried out within PGI minimum standards in order to provide quality services to communities, responding to the needs of most vulnerable population. These visits help the chapter identify issues in the community, address the needs and mitigate safety risks. Also, the team is gathering case stories from the communities to strengthen evidence for advocacy on existing needs or opportunities for PGI, including sexual and gender-based violence (SGBV).

Note that the distribution of school kits has been cancelled, as this is now being covered by other partner organizations responding to the Mindanao Earthquakes.

Protection, Gender & Inclusion Output 1.2: Emergency response operations prevent and respond to sexual- and gender-based violence and all forms of violence against children.

Indicators:	Target	Actual
# of staff and volunteers provided with training on SGBV	20	to be conducted
# of staff and volunteers provided with training on PGI linked to internal displacement	20	to be conducted

Progress towards outcomes

In evacuation centres, through the welfare services, PRC has conducted child friendly spaces/child development sessions. In total, 4,685 children (2,046 males and 2,639 females) were reached in Davao del Sur and North Cotabato.

PRC partnered with [Ronald McDonald House of Charities](#) to organize a kiddie party for the children. The activity aimed at supporting and promoting the psychosocial well-being of children considering that they have been staying in evacuation centres for a prolonged time.



Clowns showing magic tricks to the children present during the organized kiddie party. (Photo: PRC)

PRC welfare team will be conducting a one-day orientation of staff and volunteers on Protection, Gender and Inclusion on 21 February in Kidapawan City, North Cotabato chapter.

Target participants will be Red Cross Youth Volunteers and chapter staff involved in the operation. Staff and volunteers are guided with the PGI minimum standards which would help them during the implementation to provide dignity, access, participation and safety for all target population. It provides a practical guidance to limit people's exposure to the risk of violence and abuse

Also, the orientation includes sensitization of staff and volunteers on PRC's standard operating procedures on SGBV prevention, mitigation and response during emergencies. These operational guidelines are meant to guide them in what good practice is when handling SGBV case disclosures in humanitarian settings and special considerations for children and adolescents.



Migration

People reached: 38,444

Male: 19,222

Female: 19,222

Migration Outcome 1: Communities support the needs of migrants and their families and those assisting migrants at all stages of migration (origin, transit and destination)

Indicators:	Target	Actual
# of people reached with services for migration assistance and protection	40,500	38,444

Migration Output 1.1: Assistance and protection services to migrants and their families are provided and promoted through engagement with local and national authorities as well as in partnership with other relevant organizations.


Indicators:	Target	Actual
Displaced people reached with information and quality services by welfare desks	Yes	Yes

Progress towards outcomes		
<p>During the reporting period, displaced communities staying in 13 evacuation centres were supported through the Welfare desks of the PRC with services such as i) Restoring Family Links (RFL); (ii) tracing; (iii) inquiry and communications; (iv) contact of relatives and (v) referral.</p> <p>Displaced communities in different evacuation centres have also been supported with psychosocial support (PSS), food, water, health and hygiene promotion activities, essential household items and emergency shelter materials, as well as access to communal kitchen and sanitation facilities. PGI support for displaced communities has included temporary learning spaces, child friendly spaces and specific PSS activities for displaced children.</p> <p>Through the Emergency Appeal, PRC also supported health and hygiene promotion activities. An estimated 38,444 displaced people are being reached through this operation.</p>		

Migration Output 1.3: “Family links are restored for people separated from, or without news of, their loved ones as a result of the disaster”

Indicators:	Target	Actual
# of welfare desks providing RFL services in the disaster affected areas.	-	13

Progress towards outcomes		
<p>During the reporting period, displaced communities staying in 13 evacuation centres were supported through the welfare desks of the PRC with services such as i) Restoring Family Links (RFL); (ii) tracing; (iii) inquiry and communications; (iv) contact of relatives and (v) referral. PRC established two RFL stations, facilitated one tracing request and four people re-established contact with relatives through free PRC-RFL calls. PRC has partnered with SMART telecommunication by lending of two mobile phones, two satellite phones and two Wi-Fi hotspots as well as pre-paid credits for free calls. Volunteers and staff were also provided with load credits to ensure connectivity.</p>		



Disaster Risk Reduction

People reached¹⁵: TBC based on planning

Female:

Male:

DRR Outcome 1: Communities in high risk areas are prepared for and able to respond to disaster

Indicators:	Target	Actual
# of communities reached through RCRC programmes for DRR and community resilience (excluding public awareness and education campaigns)	TBD	-

DRR Output 1.1: Communities take active steps to strengthen their preparedness for timely and effective response to disasters.

Indicators:	Target	Actual
# of community DRRM plans updated/reviewed	TBD	planned
# of Red Cross 143 recruited	TBD	planned
# of Red Cross 143 provided with training	TBD	planned

Progress towards outcomes		
<p>A total of four communities will be targeted for support to establish Red Cross 143 and community-based disaster risk reduction (CBDRR) teams. This will include trainings and equipping. The selection of the communities will be reported in the next Operations Update.</p>		

¹⁵ Reference to the counting people reached guidance.

DRR Outcome 2: Communities in disaster and crisis affected areas adopt climate risk informed and environmentally responsible values and practices		
Indicators:	Target	Actual
# of communities adopted climate risk informed and environmentally responsible approaches	TBD	cancelled
DRR Output 2.1: Contributions to climate change mitigation are made by implementing green solutions		
Indicators:	Target	Actual
# of green response activities supported	TBD	cancelled
Progress towards outcomes		
Specific climate change mitigation activities have been cancelled, based on the level of income received under the Emergency Appeal, which is approximately 45 per cent at the time of writing. If more funding is received, these will be reinstated. Note that, where appropriate in the activities that are planned, PRC will make efforts to incorporate green solutions options. These will be determined during implementation.		
DRR Output 2.2: Community awareness raising programmes on climate changing risks and environmentally responsible practices are conducted in target communities		
Indicators:	Target	Actual
# of communities that have implemented activities that contribute to climate change adaptation	TBD	cancelled
# of people reached by climate change mitigation and environmental sustainability awareness raising campaigns	TBD	cancelled
Progress towards outcomes		
Specific climate change adaptation activities have been cancelled, based on the income received under the Emergency Appeal, which is approximately 45 per cent at the time of writing. If more funding is received, these will be reinstated. Note that where appropriate in the activities that are planned, PRC will make efforts to raise awareness of climate change risks, and promote environmentally responsible practices. These will be determined during implementation.		

Strengthen National Society		
S1.1: National Society capacity building and organizational development objectives are facilitated to ensure that National Societies have the necessary legal, ethical and financial foundations, systems and structures, competences and capacities to plan and perform.		
Indicators:	Target	Actual
# of National Society's branches that are well functioning.	2	2
Output S1.1.4: National Societies have effective and motivated volunteers who are protected		
Indicators:	Target	Actual
% of volunteers insured	100	100
Progress towards outcomes		
As part of this operation, PRC NHQ provides direct technical support and budget for the implementation of operations in two chapters: North Cotabato and Davao Del Sur. The North Cotabato chapter is classified in "Category E" and Davao Del Sur is in "Category D". These classifications indicate that the two chapters are not able to generate funds locally, which implies that the chapter can only cover basic operational costs and therefore requires additional support from the NHQ. In addition, support from other chapters is necessary to undertake assessments and implementation of operation activities. Additional support will be needed in terms of management, technical,		

implementation from the NHQ. The Davao Del sur chapter building has been evacuated due to damage reported in adjacent building. It will be necessary to support the chapter development, volunteer and youth management. The running costs (electricity, internet, rent and water) in the Davao and North Cotabato chapters are being covered through the Appeal; and provisions have also been made to ensure both offices are adequately equipped with cameras, laptops, printers as well as air conditioning units.

All volunteers mobilized in the operation are insured under the Membership and Accident Assistance Benefit (MAAB) of PRC.

Output 1.6: National Societies have the necessary corporate infrastructure and systems in place

Indicators:	Target	Actual
# of chapter's office rehabilitated	1	planned

Progress towards outcomes

Support to the chapters implementing the operation, specifically Davao del Sur and North Cotabato will be provided. This will include refitting and repairs to any damage caused by the earthquake (in North Cotabato).

International Disaster Response

Outcome S2.1: Effective and coordinated international disaster response is ensured

Indicators:	Target	Actual
Effective and coordinated international disaster response ensured.	Yes	Yes

Output S2.1.1: Effective response preparedness and NS surge capacity mechanism is maintained

Indicators:	Target	Actual
# of RDRT deployed in the country.	1	deployment in progress

Progress towards outcomes

IFRC has mobilized rapid response personnel to provide overarching surge support to all current DREF and Emergency Appeal operations, including the Mindanao Earthquakes response. The rapid response support includes Emergency Health, Information Management (IM) and Planning, Monitoring, Evaluation and Reporting (PMER) profiles. The surge personnel is seconded by the Canadian Red Cross Society, Netherlands Red Cross and American Red Cross. An IFRC operations manager has also been deployed for four months from the Asia Pacific Regional Office (APRO). Further support required will be determined in collaboration with PRC.

Output S2.1.3: NS compliance with Principles and Rules for Humanitarian Assistance is improved

Indicators:	Target	Actual
# of methods established to share information with communities about what is happening in the operation.	2	2
% of complaints and feedback received responded to by the National Society	100	-
% of targeted population satisfied with access to information, feedback mechanisms and can influence the programme/response	80	-

Progress towards outcomes

Volunteers are considered the greatest asset of the PRC. These are usually those who have a direct engagement with the community and are the first ones to provide information and feedback to all villager's questions. So far, established methods for sharing information with communities are through face-to-face feedback with PRC staff and

volunteers. PRC has established welfare desks in different evacuation centres, which allows for comments/concerns, especially for internally displaced people.

A client satisfaction survey was conducted following the distribution of assistance: both in cash and essential household items. Results of the survey will be reported in the next Operations Update.

Output S2.1.4: Supply chain and fleet services meet recognized quality and accountability standards

Indicators:	Target	Actual
Logistics department provides constant support to the National Society's logistics unit for replenishment and other procurements.	Yes	Yes

Progress towards outcomes

Logistics activities aim to effectively manage the supply chain of relief items, including procurement, fleet, storage and transportation to distribution sites in accordance with the requirements and aligned with standards, processes and procedures of the IFRC. Logistical support for this operation is provided by the strong logistics capacity of the PRC built in recent years, supported by an experienced IFRC country office logistics team.

IFRC CO's logistics, in coordination with PRC Logistics, dispatched the following items to Mindanao: 2,200 pieces of hygiene kits, 4,000 pieces of jerry cans and 5,000 pieces each of blankets, plastic mats, mosquito nets and tarpaulins. Replenishment of these items is in progress by way of both local and international procurement

A logistics staff is deployed to support the construction of the communal kitchen and the establishment of the emergency medical unit. A vehicle with driver from the National Headquarters, is currently supporting the relief distribution and transportation of PRC staff and volunteers.

Output S2.1.6: Coordinating role of the IFRC within the international humanitarian system is enhanced

Indicators:	Target	Actual
A coordinated and strategic response plan according to humanitarian minimum standards is adopted by actors in support of government	Yes	Yes
Shelter actors working together without duplication of services	Yes	Yes
# of shelter actors incorporating build back safer (BBS) messaging and technical assistance elements into their shelter programming	-	15

Progress towards outcomes

The Shelter Cluster Coordinator has ended her mission in the Philippines January 2020. A person has been identified to take the coordination role in-country.

Refer to [Operations Update No.1](#) on the activities related to Shelter Cluster Coordination.

Outcome S2.2: The complementarity and strengths of the Movement are enhanced

Indicators:	Target	Actual
Complementarity and strengths of the Movement enhanced	Yes	Yes

Output S2.2.1: In the context of emergencies the IFRC, ICRC and NS enhance their operational reach and effectiveness through new means of coordination.

Indicators:	Target	Actual
Movement coordination is well-established	Yes	Yes

Progress towards outcomes

Movement Coordination continuously to take in placed for this operation. Details are in [Operations Update No.1](#).

Influence others as leading strategic partner

Outcome S3.1: The IFRC secretariat, together with National Societies uses their unique position to influence decisions at local, national and international levels that affect the most vulnerable.

Indicators:	Target	Actual
IFRC and National Society are visible, trusted and effective advocates on humanitarian issues.	Yes	Yes

Output S3.1.1: IFRC and NS are visible, trusted and effective advocates on humanitarian issues

Indicators:	Target	Actual
# of communications materials produced on social media, media articles, interviews, and others to share information about the operation.	10	158

Progress towards outcomes

The PRC communication team ensures that the Red Cross response efforts are effectively communicated to its key target audiences in a timely manner. The Operations Centre (OpCen) located at the PRC's National Headquarters (NHQ) collects information from the chapters and Red Cross 143 volunteers in the affected areas. In addition to a press release, regular updates on activities and status are posted on the official social media accounts of the PRC. Communication teams also post updates and photos on [Facebook](#) and [Twitter](#) PRC staff and volunteers across the country actively contribute to corporate communications through their own social media networks.

On emerging platforms, between 16 October and 19 November 2019, social media posts for Facebook reached 1,018,740 for the Mindanao earthquake series. There were 57 different publications related to the earthquake on Facebook. On Twitter, impression reached 530,249 with 49 different posts. In total, the Facebook reach and Twitter impression reached a total of 1,548,989.

In the traditional media, at least 25 media reports have appeared in three newspapers (People's Journal, Daily Tribune, Manila Times), six television networks (CNN, ABS-CBN/UGK, ANC, Net 25), seven radio (radio Mo Pilipinas, DZBB, DZRH, 2 DZXL, Radio Agila, Bombo Radyo), nine online/social media articles (Inq.net, GMA Network, Philstar.com, DWIZ, PRC Twitter/FB/Website). The following articles and reports have been published on Relief Web and the IFRC website:

News article online:

- [PRC continues to assist earthquake victims in Cotabato and nearby provinces](#)
- [PRC mobilizes teams and staff after earthquake jolts Cotabato and nearby provinces](#)
- [PRC continues mobilizing volunteers and equipment to earthquake-hit places in Mindanao](#)
- [PRC intensifies operations amidst series of strong earthquakes in Mindanao](#)
- [PRC appeals for more support as relief operations in Mindanao intensify after series of strong earthquakes.](#)
- [PRC urges public for more support to quake-hit families in Mindanao](#)
- [More than 3 weeks after, PRC sustains its humanitarian efforts in Mindanao](#)
- [Quake-hit families in Mindanao extend gratitude to Philippine Red Cross](#)
- [IFRC Thousands in need of humanitarian assistance after Mindanao earthquakes](#)
- [Philippine Red Cross to the rescue as number of quake-affected schools in Mindanao rise](#)
- [Philippine Red Cross sets up temporary medical facilities in quake-hit Mindanao.](#)

Reports:

- [Philippines: Mindanao earthquakes Emergency Appeal no. MDRPH036](#)
- [Philippines Cotabato earthquakes- Emergency Plan of Action DREF no. MDRPH036](#)
- [Philippines: Cotabato, Mindanao earthquakes – Information Bulletin](#)

Output S3.1.2: IFRC produces high-quality research and evaluation that informs advocacy, resource mobilization and programming.

Indicators:	Target	Actual
-------------	--------	--------

# of post-distribution visits to affected communities.	2	-
# of lesson learnt workshop conducted.	1	-
Progress towards outcomes		
<p>The response planning for the operation was based on the results of PRC's Rapid Disaster Assessment and Needs Analysis (RDANA). From 29 October to 10 November 2019, two RDANA teams were deployed in the provinces of Davao del Sur and North Cotabato. Another set of two assessment teams was deployed to conduct an assessment for early recovery and recovery intervention from 18 to 27 November 2019. The results of these assessments are now being used for decision-making on the intervention.</p>		

Please refer to [Operations Update No.1](#) for details on Effective, credible and accountable IFRC

D. FINANCIAL REPORT

Income and expenditure will be outlined in an interim financial report provided at a later date.

Contact information

Reference documents



Click here for:

- [Information bulletin](#)
- [Revised Emergency Appeal](#)
- [Emergency Plan of Action \(EPoA\)](#)
- [Previous appeal updates](#)
- [Previous EpoA](#)

For further information, specifically related to this operation please contact:

In the Philippine Red Cross

- Elizabeth Zavalla, secretary general; email: elizabeth.zavalla@redcross.org.ph
- Leonardo Ebajo, director for disaster management services; email: leonardo.ebajo@redcross.org.ph

In the IFRC Philippine Country Office

- Patrick Elliott, acting head of country office; phone: +63 998 961 2140; email: patrick.elliott@ifrc.org
- David Fogden, acting operations manager; phone: +63 939 333 6874; email: david.fogden@ifrc.org
- Rajeev KC, surge disaster management delegate; phone: +63 998 961 2139; email: rajeev.kc@ifrc.org

In IFRC Asia Pacific Regional Office, Kuala Lumpur

- Mohammed Omer Mukhier, deputy regional director; email: mohammedomer.mukhier@ifrc.org
- Necephor Mghendi, head of disaster and crises unit; email: necephor.mghendi@ifrc.org
- Nur Hayati Ahmad, operations coordinator; email: OpsCoord.SouthEastAsia@ifrc.org
- Siokkun Jang, logistics manager, email: siokkun.jang@ifrc.org
- Zulaikha Mudzar, acting communications manager; email: zulaikha.mudzar@ifrc.org

In IFRC Geneva

- Nelson Castano, Manager, operations coordination; email: nelson.castano@ifrc.org
- Karla Morizzo, DREF senior officer; phone: +41 (0) 22 730 4295; email karla.morizzo@ifrc.org

For resource mobilization and pledges

- **In IFRC Asia Pacific Regional Office:** Alice Ho, partnership in emergencies coordinator; email: partnershipsEA.AP@ifrc.org

For planning, monitoring, evaluation and reporting (PMER) enquiries

- **In IFRC Asia Pacific Regional Office:** Siew Hui Liew, PMER manager; email: siewhui.liew@ifrc.org

How we work

All IFRC assistance seeks to adhere to the [Code of Conduct](#) for the International Red Cross and Red Crescent Movement and Non-Governmental Organizations (NGOs) in Disaster Relief and the [Humanitarian Charter and Minimum Standards in Humanitarian Response \(Sphere\)](#) in delivering assistance to the most vulnerable. The IFRC's vision is to inspire, **encourage, facilitate and promote at all times all forms of humanitarian activities** by National Societies, with a view to **preventing and alleviating human suffering**, and thereby contributing to the maintenance and promotion of human dignity and peace in the world.

The IFRC's work is guided by Strategy 2020 which puts forward three strategic aims:



Save lives.
protect livelihoods,
and strengthen recovery
from disaster and crises.



Enable **healthy**
and **safe** living.



Promote social inclusion
and a culture of
non-violence and peace.