

www.ifrc.org
Saving lives,
changing minds.

Disaster relief emergency fund (DREF) Paraguay: Severe Storm

 International Federation
of Red Cross and Red Crescent Societies

DREF operation n° MDRPY013
GLIDE n° [ST-2012-000170-PRY](#)
2 October 2012

The International Federation of Red Cross and Red Crescent (IFRC) Disaster Relief Emergency Fund (DREF) is a source of un-earmarked money created by the Federation in 1985 to ensure that immediate financial support is available for Red Cross and Red Crescent emergency response. The DREF is a vital part of the International Federation's disaster response system and increases the ability of National Societies to respond to disasters.

CHF 221,989 has been allocated from the IFRC's Disaster Relief Emergency Fund (DREF) to support the National Society in delivering immediate assistance to some 3,755 beneficiaries. Unearmarked funds to repay DREF are encouraged.

Summary: On the night of 18 September, a severe storm with winds between 120 and 140 Km/h, and gusts as high as 180 Km/h, struck Paraguay. The winds, accompanied by strong precipitations and large hail stones, caused severe damages in the municipality of Mariano Roque Alonso in the Central department as well as affecting homes and crops in the Neembucu department and other regions of



A damaged structure in Mariano Roque Alonso as a result of the severe storm that affected the municipality: Paraguayan Red Cross

southern Paraguay. DREF funds will be utilized to provide relief items, cash vouchers for construction materials and psychosocial support to schoolchildren in the Central department where 2,984 families were affected by this storm.

This operation is expected to be implemented over 3 months, and will be completed by the end of December 2012; a Final Report will be made available three months after the end of the operation (by the end of March 2013).

[<click here for the DREF budget;](#)
[here for contact details;](#)
[here to view the map of the affected area>](#)

The situation

The severe storm that caused heavy rainfall, hailstones and spawned a tornado, affected departments in southern Paraguay, and caused severe damages in the municipality of Mariano Roque Alonso in Central department. Fallen trees and power lines, subsistence crop losses and severe damage to homes and schools were the result. 5 deaths, of which the majority occurred in military barracks in the Central Department and approximately 100 injured were also attributed to the storm.

Meteorological stations in the main affected cities registered the following wind speeds:

- Encarnación: 26,1 m/sec (52,2 KT)
- Pilar: 16,1 m/sec (32,2 KT)
- Asunción: 36,9 m/sec (73,8 KT).
- Aeropuerto Guaraní: 20,3 m/sec (40,6 KT)

Based on the information provided by the Incident Control System of the Emergency Operation Centre (EOC) led by the National Emergency Secretariat (SEN), the number of families directly affected is approximately 5,000. The most affected areas are:

- Central Department (Mariano Roque Alonso and Asunción): approximately 2,984 affected families (as of 22 September)
- Ñeembucú: 1,200 families (as of assessments on 22 September)
- Departments of Misiones, Caazapá, Paraguari and Alto Paraná (Ciudad del Este), Canindeyú: 816 families.

The Ministry of Education and Culture (MEC) has created a committee to assess damages in school buildings (Ministerial Decree No. 4684). Preliminary results of the damage assessment indicate:

School	Damages assessed (as of 19 September)
Central Department – Zone 2 Mariano Roque Alonso	
Básica Inmaculada Concepción	Without damages
Defensores del Chaco	Completely flooded
Escuela y Colegio San Jorge	Fallen wall, five classrooms without roofs
Escuela y Colegio Juan Manuel Frutos	Fallen platform
Gral. Eugenio A. Garay	Several classrooms partially without roofs, security guard's house fallen
Básica Félix Ruiz	Classroom without roof; four teachers' homes destroyed
Básica El Portal y el Palmar	Cracks in the walls
Ñeembucú Zona 1	
Básica San José and Básica San Roque Gral. Fías district; Curupayty and Santa Rosa de Lima and Colegio Nacional San Carlos (Humaitá District)	Broken windows, shingles, classrooms without roofs.
San Pedro Zona Norte	
Nº 504 Sagrado Corazón de Jesús	Fallen roof

Coordination and partnerships

The SEN, supported by the Armed Forces, volunteer fire fighters, the Ministry of Public Health and Social Welfare, and the Paraguayan Red Cross, has initiated a relief operation to support the affected areas. An Incident Command System was established in Mariano Roque Alonso, where a state of emergency was declared and 467 personnel were mobilized for logistics support. The National Administration for Electric Energy supported by members of the Armed Forces, worked together to re-establish power, while the Sanitary Services Company worked to re-establish water services in the days after the disaster.

The Paraguayan Red Cross, the Armed Forces and SEN officials continue to conduct joint damage and needs assessments and to date the government has been able to provide the following assistance to 1,319 families in the Central department:

- 22,924 roof sheets
- 33.000 litres of water
- 21 rolls of plastic sheeting.

The Armed forces have mobilized 140 personnel, 10 trucks and two 4x4 trucks to support with the clearance of roads that were blocked by fallen trees and electricity poles, as well as to support with distributions. The National Police has mobilized 28 police cars, 250 officers, 12 trucks, 1 ambulance and 4 motorcycles.

In the department of Ñeembucú, a departmental EOC was also activated by the SEN and damage and needs assessment in the areas most affected by the storm are being conducted. SEN is also distributing relief items in this department such as: 100 plastic tents, food parcels with oil, mate, sugar, beans, salt, and

flour for 900 families in the districts of Mayor Martínez, General Díaz, Humaitá, Cerrito, Desmochado, Pilar and Isla Umbu.

Red Cross and Red Crescent action

Since the beginning of the disaster, the National Society has activated its Emergency Operations Centre (EOC), and some 60 volunteers, 50 in Central Department and 10 in Ñeembucú have assisted with pre-hospital care, supported by the Fire Department and the Ministry of Health. In close coordination with SEN and other governmental entities, the Paraguayan Red Cross has been conducting detailed damage and needs assessments throughout the most affected areas in these two departments. The Paraguayan Red Cross has presence in the National EOC led by the SEN and in the regional EOCs in Ñeembucú and Mariano Roque Alonso. The IFRC also deployed a Disaster Management Delegate to participate in the damage and needs assessments and with the development of the plan of action. All the activities of the Paraguayan Red Cross are being closely coordinated with the SEN, whose national minister was leading the relief efforts from the EOC in Mariano Roque Alonso.

The needs

The severe storm, which included an F1 tornado, destroyed or damaged homes and outbuildings and flung household belongings and mattresses several blocks away. By conducting detailed house to house assessments to determine eligibility for relief items, the Paraguayan Red Cross will target the most vulnerable and affected population within the urban setting of Mariano Roque Alonso as well as other nearby affected communities. The Paraguayan Red Cross is working with the Ministry of Education to provide psychosocial support to children whose homes and schools were affected. The PRC's overall Plan of Action intends to also provide assistance to affected families whose subsistence-level crops were destroyed by the strong winds and hail in the Ñeembucú department through the provision of seed kits and food parcels. This DREF-funded operation will focus support solely on the activities in the Central department and other funding sources will be sought by the Paraguayan Red Cross for response activities in Ñeembucú. The government has been providing relief items and roofing materials to the affected population throughout the country, as well as clearing roads and restoring basic services, since the onset of the disaster.

The proposed operation

The DREF operation will support the Paraguayan Red Cross in providing humanitarian assistance to a total of 751 families in the urban zones of the Mariano Roque Alonso municipality of the Central Department and nearby affected areas. The aid that the National Society will provide will have the following main core actions:

1. Based on detailed assessments, providing **kitchen sets** and **mattresses** to families to replace essential items that were lost or damaged in the storm and **cash vouchers for construction materials** to contribute to the reconstruction or repair of damaged homes.
2. Providing **psychosocial support** to children from 6 affected schools.

In order to support the implementation of this operation and assist with administrative reporting and procurement procedures, a RIT member will be mobilized to Paraguay for the full term of the DREF operation. This will be the first time that the National Society has implemented a cash transfer programme. As such, technical support and monitoring will be provided by a Federation DM delegate who has experience in implementing cash voucher for shelter programmes in the region. Due to the lack of large stores in the local area that would be able to offer the mattresses and specific kitchen set items in the quality or quantity needed, a cash or commodity voucher for these items will not be distributed. Instead, the kitchen sets will be transported by air from Federation stocks in Panama, and mattresses will be sourced locally and distributed to affected families by Paraguayan Red Cross.

The location of the families that will benefit from the operation in the Central department are detailed in the following table:

Municipality	Sector	Families	Total
Mariano Roque Alonso	Las Colinas	262	751
	San Jorge	283	
	San Ramón	206	

The selection of beneficiaries will be based on the following criteria:

- Level of impact on their homes and belongings (housing infrastructure partly or totally destroyed).
- Location of their homes within the storm affected area.
- High vulnerability level and limited financial resources to repair their homes and replace their damaged or lost belongings.

Relief distributions (food and basic non-food items)

Outcome: 751 affected families from the Central department will benefit from the provision of essential food and non-food items to alleviate the effects of the emergency.

Output 1: 751 families in the Central Department receive kitchen sets and 400 families receive two mattresses each.

- Identify and select families in affected areas.
- Develop a beneficiary targeting strategy and registration system to deliver intended assistance.
- Distribute relief supplies and control supply movements from point of dispatch to end user.
- Monitor the relief activities and provide reporting on relief distributions.

The housing in the affected area in Mariano Roque Alonso is characterized by irregular construction practices. The majority of homes have a central room which are constructed with brick and cement and have a fibre cement sheeting roof that serves as a sleeping and living area. The kitchen and bathroom are attached to the home and generally are of a lower construction quality, principally utilizing plywood or other less durable materials. As a result of the severe storm, the roofs of the homes were severely damaged or destroyed, some brick homes collapsed and the majority of the less well built kitchen extensions suffered damage and items were lost. As there was greater affectation to the kitchen areas, 751 families will receive kitchen sets. It is estimated that approximately half of these families lost or suffered damage to their mattresses and as such only 400 families will receive the mattresses.

The **kitchen sets** will contain the following items:

- 1 x COOKING POT, 7l (frying pan lid fits)
- 1 x FRYING PAN, 2.5l, used as lid for the 7L cooking pot)
- 1 x COOKING POT, 5l, with lid
- 5 x BOWL, 1l, metallic
- 5 x PLATE, 0.75l, metallic
- 5 x CUP, 0.3l, metallic
- 5 x SPOON, table, 15ml, stainless steel
- 5 x FORK table, 20cm, stainless steel
- 5 x KNIFE, table, 17cm, stainless steel
- 1 x KNIFE, kitchen, 15cm stainless steel blade
- 1 x SPOON, wooden, stirring 30cm
- 1 x SCOURING PAD

There will be **2 mattresses** distributed per family, 1 matrimonial and 1 children's size. These will be purchased locally.

Emergency health

Outcome: Psychosocial support is provided to children from the affected area of the Central Department and they increase their resilience and coping mechanisms

Output: Children from six schools participate in psychosocial support activities

- Volunteer teams are formed and trained to provide psychosocial support to children
- Carry out psychosocial support to target groups of children from affected schools.

Schools in the Mariano Roque Alonso municipality were severely damaged by the storm preventing the resumption of classes and the storm also greatly affected children's homes and their families' living situations. In order to counter these effects, the National Society will closely coordinate with the Ministry of Education and provide psychosocial support to schoolchildren.

Emergency shelter

Outcome: 751 families will be able buy the materials needed to continue repairs to their damaged homes.

Outputs: 751 families receive a cash voucher that they can exchange for construction materials in local markets.

- Beneficiary selection criteria determined
- Detailed damage and needs survey conducted with each family
- Agreements created with local merchants
- Cash voucher designed and printed
- Distribution of cash vouchers along with information on safe building practices
- Monitoring of voucher exchange with merchants
- Monitoring and evaluation of the use of the materials procured by beneficiaries for repair/reconstruction
- Payment to merchants

Through the distribution of cash vouchers, selected beneficiary families may purchase the construction supplies that they deem essential for the repair of their homes from local building supply stores. Assessments in the Mariano Roque Alonso municipality revealed varying damage to homes. Due to the government provision of roofing materials, beneficiaries' own resources, their ability to recover construction materials from their damaged homes and surrounding areas and re-utilize them, and donations of construction materials from relatives or other sources, it was calculated that a cash voucher of approximately CHF 93 would provide an impactful complementary assistance to beneficiaries to further repair or reconstruct their homes. The cash voucher will be conditional and allow beneficiaries to buy items such as bricks, concrete and other basic construction materials from the designated merchant(s).

Technical support for the design, implementation and monitoring of this activity will be provided by a Federation Disaster Management delegate with experience in cash voucher for shelter projects as well as from a Federation Shelter Delegate in the Americas Zone.

Contact information

For further information specifically related to this operation please contact:

- **Paraguayan Red Cross:** Luis Díaz de Bedoya, president of the Paraguayan Red Cross, phone: 59521-222-797; email: crppcia@uninet.com.py
- **IFRC regional representation:** Gustavo Ramirez, regional representative for the Southern Cone and Brazil; phone: +541 1495 17420; email: gustavo.ramirez@ifrc.org; **IFRC Americas zone office**, phone: +507 317 3050
- **IFRC Americas Zone Office:**
 - Benoit Porte, acting PADRU coordinator; email: benoit.porte@ifrc.org
 - Jane Grimshaw, PMER manager; email: jane.grimshaw@ifrc.org
 - Inga Purmalis, resource mobilization officer; email: inga.purmalis@ifrc.org
- **In Geneva:** Cristina Estrada, quality assurance senior officer, phone: +41 22 730 4222, email: cristina.estrada@ifrc.org
- **Regional Logistics Unit (RLU):** Douglas Baquero, regional logistic coordinator; email: douglas.baquero@ifrc.org; phone: +507 6747 3146; fax: +507 316 1347.



[Click here](#)

1. DREF budget [below](#)
2. Click [here](#) to return to the title page

How we work

All IFRC assistance seeks to adhere to the Code of Conduct for the International Red Cross and Red Crescent Movement and Non-Governmental Organizations (NGO's) in Disaster Relief and the Humanitarian Charter and Minimum Standards in Disaster Response (Sphere) in delivering assistance to the most vulnerable.

The IFRC's vision is to inspire, encourage, facilitate and promote at all times all forms of humanitarian activities by National Societies, with a view to preventing and alleviating human suffering, and thereby contributing to the maintenance and promotion of human dignity and peace in the world.

www.ifrc.org

Saving lives, changing minds.



The IFRC's work is guided by Strategy 2020 which puts forward three strategic aims:

1. Save lives, protect livelihoods, and strengthen recovery from disaster and crises.
 2. Enable healthy and safe living.
 3. Promote social inclusion and a culture of non-violence and peace.
-

DREF OPERATION

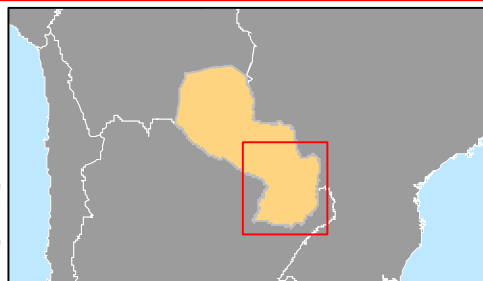
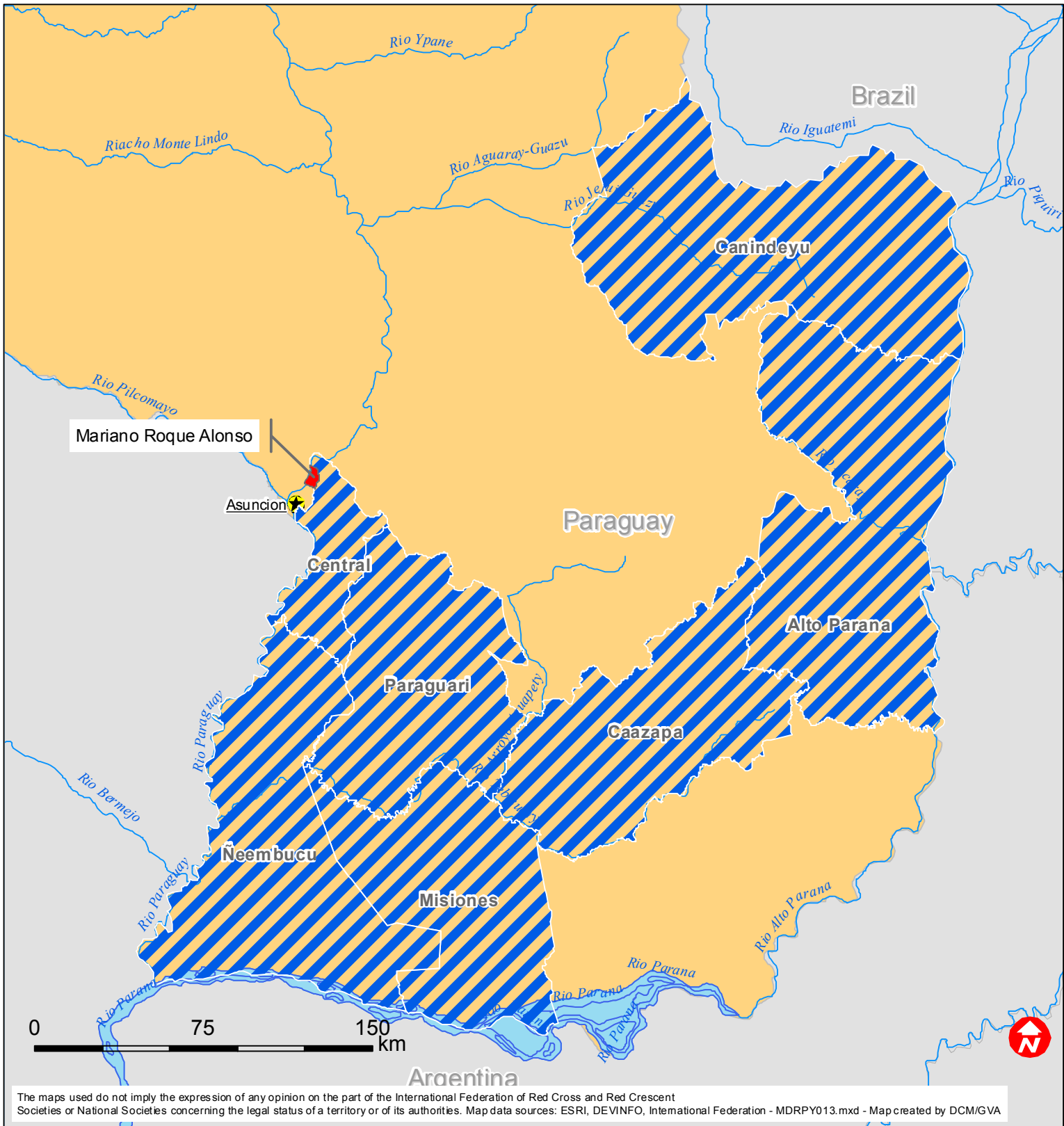
01/10/2012


MDRPY013 PARAGUAY FLOODS

Budget Group	DREF Grant Budget CHF
Shelter - Relief	
Shelter - Transitional	70,254
Construction - Housing	
Construction - Facilities	
Construction - Materials	
Clothing & Textiles	61,741
Food	
Seeds & Plants	
Water, Sanitation & Hygiene	
Medical & First Aid	
Teaching Materials	4,677
Utensils & Tools	23,535
Other Supplies & Services	
Cash Disbursements	
Total RELIEF ITEMS, CONSTRUCTION AND SUPPLIE:	160,207
Land & Buildings	
Vehicles	
Computer & Telecom Equipment	
Office/Household Furniture & Equipment	
Medical Equipment	
Other Machinery & Equipment	
Total LAND, VEHICLES AND EQUIPMENT	0
Storage, Warehousing	
Distribution & Monitoring	5,103
Transport & Vehicle Costs	1,871
Logistics Services	1,165
Total LOGISTICS, TRANSPORT AND STORAGE	8,139
International Staff	9,822
National Staff	
National Society Staff	6,081
Volunteers	8,475
Total PERSONNEL	24,378
Consultants	
Professional Fees	2,806
Total CONSULTANTS & PROFESSIONAL FEES	2,806
Workshops & Training	
Total WORKSHOP & TRAINING	0
Travel	7,484
Information & Public Relations	1,403
Office Costs	1,403
Communications	1,216
Financial Charges	1,403
Other General Expenses	
Shared Office and Services Costs	
Total GENERAL EXPENDITURES	12,909
Partner National Societies	
Other Partners (NGOs, UN, other)	
Total TRANSFER TO PARTNERS	0
Programme and Services Support Recovery	13,549
Total INDIRECT COSTS	13,549
TOTAL BUDGET	221,989



Paraguay: Severe storm



 Most affected areas