


www.ifrc.org
Saving lives,
changing minds.

Emergency Plan of Action (EPoA) Bangladesh: Monsoon Floods

 International Federation
of Red Cross and Red Crescent Societies

DREF Operation n°:	MDRBD026	Glide n°:	FL-2020-000166-BGD
Date of issue:	17 July 2020	Expected timeframe:	3 months
		Expected end date:	31 October 2020
Category allocated to the of the disaster or crisis: Orange			
DREF allocated: CHF 577,496			
Total number of people are affected:	2.2 million ¹	Number of people to be assisted:	25,000
Districts affected:	18 districts ²	Districts targeted:	6 districts ³
Host National Society(ies) presence (n° of volunteers, staff, branches): Bangladesh Red Crescent Society (BDRCS) has over 800,000 volunteers and staffs, and 68 units all over the country. The National Society is well known and respected in the country and works closely with the Government. The role of the BDRCS is well articulated in the Government's Standing Orders on Disaster (SOD) which is the main guiding and regulating tool for the disaster response and management in Bangladesh.			
Red Cross Red Crescent Movement partners actively involved in the operation: American Red Cross, British Red Cross, Canadian Red Cross, Danish Red Cross, German Red Cross, Italian Red Cross, Japanese Red Cross Society, Qatar Red Crescent, Swedish Red Cross, Swiss Red Cross, Turkish Red Crescent, and the International Committee of the Red Cross (ICRC).			
Other partner organizations actively involved in the operation: Government of Bangladesh (GoB), UN Resident Coordinator (RC) office, UN agencies, INGOs and NGOs.			

A. Situation analysis

Description of the disaster

With the rise of water levels in all major three river basins and the south-eastern hill regions coupled with the heavy to very heavy rainfall in the upstream Indian states and inside Bangladesh, the country is likely to witness a prolonged flood inundating low-lying areas in nearly 25 districts. The country has already witnessed a very heavy rainfall for five to six days this month and it may experience another round of very heavy downpour with a break of a week and it will cause the rise of water levels in the major rivers.

According to the Bangladesh Water Development Board (BWDB), this second phase flood this season may continue at a stretch till the end of July and it could prolong in the next month too on the basis of rainfall with water levels of major rivers



Red Crescent Community volunteers helping people to evacuate with their belongings, Jamalpur district. (Photo: BDRCS)

¹ As of 16 July, reported by Ministry of Disaster Management & Relief (MoDMR). The affected number of people is increasing day by day. Based on forecasted impact, the National Need Assessment Working Group (NAWG) anticipating that around 7.53 million people may expose to moderate flooding in the country.

² Jamalpur, Sylhet, Sirajganj, Kurigram, Lalmonirhat, Tangail, Gaibandha, Bogura, Sunamganj, Naogaon, Netrokona, Faridpur, Rangpur, Nilfamari, Rajbari, Madaripur, Manikganj, Feni

³ Jamalpur, Sylhet, Sirajganj, Kurigram, Lalmonirhat and Tangail.

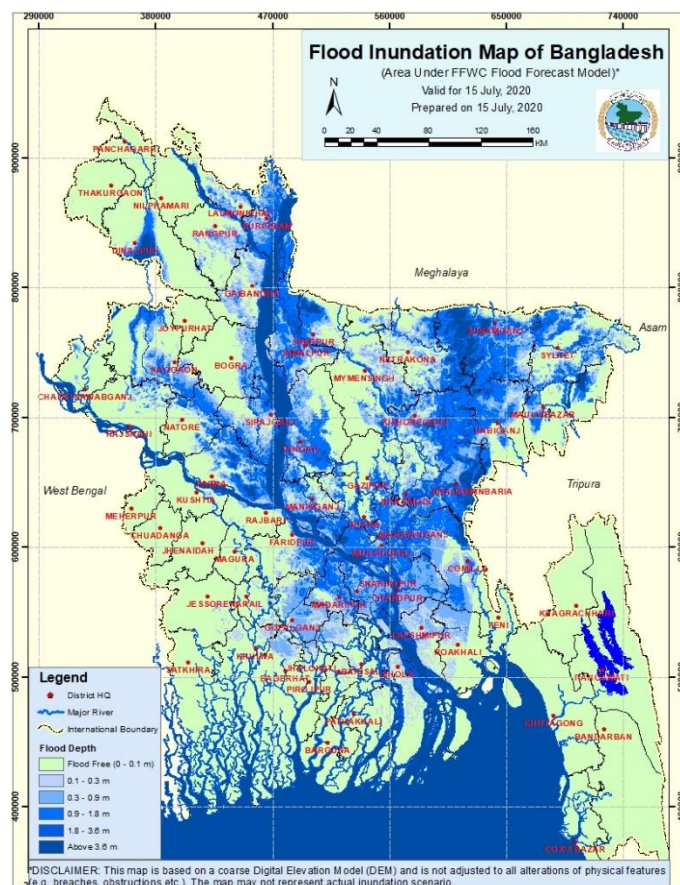
remaining above danger marks. Bangladesh witnessed the first phase of flood from 26 June to 7 July 2020 affecting around 15 districts due to onrush of upstream water and heavy downpours. Yet, water levels in Brahmaputra and upper Meghna basins started rising again from 9 – 10 July and later in Padma basin causing inundating of low-lying areas in north-eastern districts of Sunamganj, Sylhet and Netrokona and northern districts of Kurigram, Nilphamari, Lalmonirhat, Rangpur and Gaibandha, northwest Natore and Noagaon, north-central Bogura, Sirajganj, Jamalpur and Tangail.

According to the Flood Forecasting and Warning Centre (FFWC) forecast, the current flood has 50 per cent chance to cross the one in 10 years return period by 21 July 2020. Thousands of people in low-lying areas are witnessing the second phase of floods this season due to rise of water levels of major rivers in the country. According to the special flood report dated on 16 July by Ministry of Disaster Management and Relief (MoDMR), so far, a total of 2,246,472 people in 18 districts⁴ are affected by this fresh flood, it also reported six people have died. Total 1,086 flood shelters are opened in 18 districts and 55,930 people have taken refuge there.

New flooding areas in Nilphamari, Jamalpur, Kurigram, Lalmonirhat, Sylhet, Sunamganj, Natore, Gaibandha, Bogra, Netrokona, Feni, Habiganj, and Sirajganj were inundated further due to overflow of major rivers on 13 July. As the flood inundated many low-lying areas in northern and north-eastern regions over the past few days, marooned people have set up basic shelter on embankments, roads, highland and flood centres with their domestic animal and valuables.

According to FFWC on 14 July 2020, due to heavy rainfall and upstream water from bordering areas, the water flow Brahmaputra-Jamuna and Ganges-Padma river basin have been increasing rapidly and it will continue over the next 72 hours. The Padma was flowing nearly seven centimeters above the danger level at Bhagyakul, Munshiganj and is likely to keep flowing above the danger level over the next week. River water was rising at 78 of the 101 points observed by the warning center the morning.

Fourteen major rivers are flowing above their danger marks (DM) at 22 stations on Monday, according to FFWC. In Kurigram, floodwater inundated vast areas more than one hundred people in nine upazilas⁵ of the district have been



Bangladesh flood inundation map based on FFWC flood forecast, as of 15 July 2020. (Photo: FFWC)



Thousands of people have taken shelters on the embankments, roadsides and other different shelters due to this second phase of floods. Photos are from Kruigram district. (Photos: BDRCS)

⁴ The new information is coming in everyday and accordingly they update this report. So far, they have reported information from 18 districts.

⁵ Upazila (sub-district), is an administrative region in Bangladesh. They function as sub-units of districts.

marooned. Flood water snapped road communication in some areas. Some 438 shelters, including schools and madrasas, have been prepared and police have taken necessary steps to maintain law and order there. Most of the unions of Fulbari, Chilmari and Roumari upazilas remained out of reach by road. In Rangpur, people in three upazilas have been marooned as flash flood hit the area after the water level of Teesta basin rose. All the 653 chars⁶, occupying 42 per cent of Rangpur division, remained stranded. In Sunamganj, people of all the 11 upazilas are in peril as the flash flood hit the region for the second time amid the COVID-19 pandemic.

Summary of on-going flood situation, according to situation report of MoDMR as of 16 July 2020.

District Name	No of affected upazila	No of affected union	No of total affected families	No of total affected people
Jamalpur	7	46	141,150	598,217
Sylhet	10	43	39,895	266,829
Sirajganj	6	75	47,217	213,473
Kurigram	9	56	46,885	187,540
Lalmonirhat	5	22	39,548	177,966
Tangail	6	32	21,400	145,304
Gaibandha	4	26	32,763	130,528
Bogura	3	18	31,342	125,470
Sunamganj	15	84	3,133	108,229
Naogaon	4	14	18,800	75,200
Netrokona	5	31	19,375	64,100
Faridpur	5	11	15,470	61,880
Rangpur	3	13	18,000	50,000
Nilphamari	2	10	6,770	27,080
Rajbari	3		2,100	8,900
Madaripur	4	23	3,498	2,885
Manikganj	7	21	638	2,871
Feni	2	3	Yet to receive	
Total	100	528	487,984	2,246,472

Note: The first most six affected districts - Jamalpur, Sylhet, Sirajganj, Kurigram, Lalmonirhat and Tangail, will be targeted by BDRCS under this DREF operation.

In Bogura, water of the Jamuna was flowing 94 centimeters above of the danger level at the Mathurapara point in the Sariakandi Upazila on 14 July. Many families have lost their homesteads in the remote areas of Chaluabari union in Sariakandi Upazila due to the flood.

In Gaibandha's Sundarganj, three of its eight unions are completely under water, with all their roads damaged and eroded. In Nilphamari, flood situation in the Teesta basin area is still unchanged though water level in the river slightly dropped. Four of the right unions of Dimla Upazila could not be reached without boats. People have been living for around one week under open sky and facing huge crisis of food. Many fish and poultry farms were washed away while seedbeds were damaged by the floods.

In Lalmonirhat district, many people, who had moved to shelters after the flood in June and recently returned to repair their homes, found their houses and properties submerged again. The BWDB had also issued a red alert in the Teesta basin on 13 July. The Roads and Highways Department estimated that 35 km of roads got damaged in the first flood spell which would require BDT 545 million (approx. CHF 5.9 mil) to get repaired.

Earlier, during the last week of June 2020, BDRCS based on the forecast, with the support of IFRC has activated its [Early Action Protocol \(EAP\)](#) worth CHF 234,803 and provided cash grant assistance and evacuation to 3,789 households in three districts of Jamalpur, Kurigram and Gaibandha which had more than 25 per cent of household assets damaged forecasted during the first phase of the floods. The objective of the early action was to reduce the impact of the floods on vulnerable households in selected unions, but as the floods continue to worsen the need was identified to move into a response operation to complement the actions already taken.

The axis of monsoon runs through Rajasthan, Hariyana, Uttar Pradesh, Bihar, West Bengal to Assam across central part of Bangladesh. One of its associated troughs extends up to North Bay. The monsoon is active over Bangladesh and moderate over North Bay. This is likely to bring light to moderate rain or thundershowers accompanied by temporary gusty wind at many places over Rangpur, Mymensingh, Sylhet, Khulna, Barishal and Chattogram divisions and over Rajshahi and Dhaka divisions, which will worsen the floods situations in the country.

⁶ Char a tract of land surrounded by the waters.

Amid the COVID-19 pandemic, many poor people are facing shortages of food, pure drinking water and other essentials and their sufferings have mounted. Flood preparation specialists have discovered that losses of income caused by the COVID-19 pandemic make it harder for vulnerable communities to face the floods in this monsoon season. The flood and landslides from this year's monsoon season will impact communities more severely because of economic stagnation and COVID-19-related health risks. There are concerns that a lot of people will be pushed further into poverty because of this and if the communities are battered by floods that destroy or damage homes, agricultural land, schools and hospitals, it will only make things worse.

Summary of the current response

Overview of Host National Society response action

While coordinating closely with the government at national and district levels, Bangladesh Red Crescent Society (BDRCS) together with International Federation of Red Cross and Red Crescent Societies (IFRC) and in-country Participating National Societies (PNS) is closely monitoring the situation. As mentioned above, based on forecast during the last week of June, BDRCS activated the floods EAP and assisted 3,789 households with multipurpose cash support of BDT 4,500 (approximately CHF 49) each in the districts of Jamalpur, Gaibandha and Kurigram. BDRCS with the support of IFRC, German Red Cross and Swiss Red Cross completed the distribution by 4 July. BDRCS also provided evacuation support to the people, their livestock, and moveable assets and basic first aid services to the injured people.



BDRCS staff and volunteers visiting flood affecting communities in Nilphamari district. (Photo: BDRCS)

For this current flood situation, BDRCS had two coordination meetings with the IFRC and in-country PNS on 11 and 12 July 2020. Experts from the Red Cross Climate Centre and BDRCS Forecast based Financing (FbF) team presented updated forecasts during these meetings. While closely monitoring the situation at national and districts levels, BDRCS allocated some 13,400 food packs for the flood affected areas. Deployment order for six water purification units with 1,800 units of jerry cans were already issued. Household items such as 2,000 sets of hygiene parcels, 1,000 sets of dignity kits, 3,000 sheets of tarpaulins and 2,000 units of tents are on standby from the disaster preparedness stock. While the local volunteers of BDRCS units (branches) are active in the field, especially in Gaibandha, Kurigram, Bogura, Sirajganj, Tangail, Lalmonirhat, Nilphamari, Jamalpur; BDRCS has put 180 National Disaster Response Team (NDRT) and National Disaster WASH Response Team (NDWRT) members on stand by for the deployment. BDRCS also kept couple of mobile medical teams for possible deployment. BDRCS NHQ has opened the Emergency Control Room and advised all its staff to be on high alert for possible deployment. Considering the COVID-19 pandemic situation, BDRCS given utmost importance to the safety of its staff and volunteers.



Red Crescent volunteers are preparing the water purification unit (Man-pack) on riverbank in Kurigram to provide safe drinking water to flood affected people. (Photo: BDRCS)

BDRCS is implementing Integrated Flood Resilience Programme (IFRP) in eight communities of Jamalpur (supported by the Swedish Red Cross), Lalmonirhat and Nilphamari districts (supported by MoFA, Government of the Republic of Korea and IFRC) where a total of 200 trained and equipped community disaster response team (CDRT) members are on standby and keeping continuous communications with the communities. The community-based flood early warning system is activated – in Jamalpur it was activated on 20 June 2020; in Nilphamari and Lalmonirhat districts on 27 June. Team is coordinating with the respective district level Water Development Board offices and collecting information and disseminating the message among the community people regarding the flood situation. The programme communities of Nilphamari and Jamalpur are mostly affected and flooded as the river water crossed the danger level. Hence, the community-based flood contingency plan has been activated in each community and community volunteers in coordination with the local government took necessary actions in line with the plan. The community disaster response fund is also available in each community and can be utilized as per need. In Nilphamari, through this community disaster fund, 370 households have received dry food support on 15 July.



Red Crescent volunteers are providing safe drinking water to the stranded flood affected people in Tangail district. (Photos: BDRCS)

Overview of Red Cross Red Crescent Movement Actions in country

IFRC Country Office (CO) in Bangladesh keeps close coordination with BDRCS, in-country Movement partners and the Asia Pacific Regional Office (APRO) in Kuala Lumpur. IFRC CO team also keeps close coordination with the Humanitarian Country Cluster Team (HCCT), other in-country clusters, sectors and working groups at national level.

The Membership Anticipatory Action team comprised of BDRCS, IFRC, in-country PNS and RCRC Climate Centre has been monitoring the flood situation from the beginning of monsoon season. The team shared technical weather synopsis regularly which was widely shared with the relevant stakeholders.

The in-country PNS and ICRC are also closely monitoring the situation and coordinated with BDRCS to prepare and respond to the disaster. They attended the coordination meetings and shared the information with their respective headquarters. American Red Cross has been coordinating with its regional office and headquarters and kept them informed on the current situation for considering the support for anticipatory and response stage. Supported by British Red Cross, BDRCS has already dispatched 1,800 jerry cans to 6 flood affected districts of Sirajganj, Tangail, Kurigram, Gaibandha, Bagura and Jamalpur. BDRCS with the support of IFRC, German Red Cross and Swiss Red Cross reached 3,789 households with multipurpose cash assistance under the activated EAP by 4 July. Among these 3,289 households covered from IFRC EAP DREF pot and remaining 500 households covered by Swiss Red Cross. With the support of Qatar Red Crescent, BDRCS is in process to distribute 13,400 food packages⁷ in flood and COVID affected districts.

Following the request from BDRCS, IFRC has allocated CHF 577,496 from its Disaster Relief Emergency Fund (DREF) to support the BDRCS to deliver humanitarian assistance up to 25,000 people (5,000 households) for 3 months, with a focus on the following areas of focus: shelter, livelihoods and basic needs, health, Water, Sanitation and Hygiene (WASH), and Protection, Gender and Inclusion (PGI).

Overview of other actors' action in country

The Government of Bangladesh (GoB) allocated total 8,210 metric tons of rice, BDT 22,250,000 (approximately CHF 242,235) cash, 48,000 packets of dry foods, BDT 4,800,000 (approximately CHF 52,258) worth of fodders (animal foods) and BDT 4,800,000 (approximately CHF 52,258) worth of children's meal among flood affected districts. Each district will receive 200 metric tons of rice, BDT 500,000 cash (approximately CHF 5,443), BDT 200,000 (approximately CHF 2,177) worth of children's meal, BDT 200,000 (approximately CHF 2,177) worth of fodder and 2,000 packets of dry foods. The District Disaster Management Committee (DDMC) and Bangladesh Water Development Board offices

⁷ 7.5 kg rice, 1 kg lintel, 1 liter soybean oil, 1 kg sugar, 1kg salt and 0.5 kg semolina.

have been constantly monitoring the flood situation since June and holding meetings, follow ups to gear up preparedness to face it during monsoon.

Humanitarian Coordination Task Team (HCTT⁸) and clusters Coordination teams have been monitoring the situation and three SitRep issued by Need Assessment Working Group (NAWG). The shelter cluster also monitoring the situation and maintaining close coordination with the partners to share the data via 4W matrix and assessment across shelter sector, identifying gaps in assistance and advocating for further funding. So far, 51,868 people have been reached by different organizations (Care, FAO, PIB, UNFPA, WFP, Solidarity, RDRS, ESDO, MJSKS, SKC) through FbF at Kurigram (19,374), Gaibandha (17,916), Jamalpur (12,930) Sirajganj (1,633) and Bogura

OCHA's anticipatory action framework funded by the UN's CERF released ex-ante funds of USD 5.4 million to implement early actions for the flood. Implementing partners are WFP, BDRCS via a yet-to-be-finalized sub-granting agreement with WFP, FAO, and UNFPA. The flood trigger is based on the one developed by the Bangladesh Red Crescent for the EAP and has a 10-day and five-day trigger. The five-day trigger was reached on 11 July, prompting UN partners to implement early actions which include unconditional cash, support to livestock, and provision of MMH and dignity kits. BDRCS did not participate in this trigger event given that the sub-granting agreement was not yet signed and the EAP was just implemented. BDRCS and IFRC are coordinating with UN resident Coordinator Office and HCCT, Clusters regarding the implementation of the activities in the targeted districts to avoid duplication.

Needs analysis, targeting, scenario planning and risk assessment

Needs analysis

Food security and livelihood

Monsoon rainfall and deluge of water from hilly areas upstream have inundated districts in the northern and eastern areas of Bangladesh, causing widespread damage. While short-term food security is the most imminent problem; there will also be a significant impact on long-term food security due to impacts on crops and livelihoods. Available information indicates that severe losses to livestock and fisheries in the northern areas are likely to impact long-term food security in the region. Limited work opportunities will reduce purchasing capacity of the vulnerable families, which in turn, will result in a prolonged lean season exacerbating further food security and the nutrition status of families. Livelihood specially depends on farming is heavily impacted across the region as agricultural activities are fully suspended because of the inundation of the cultivation land and damage of seeds beds. A few numbers of affected people are surviving by their small savings. The available information also indicates that many people have already started to sell their livestock below market price to buy necessary items for their families as their normal income sources have been disrupted, indicating that families are already employing negative coping strategies to cope with the impacts. The elderly, female headed families, pregnant and lactating women, and those already relying on food aid are the most vulnerable in terms of food security, in relief as well as in the recovery phase. As per the available information market of the affected areas are mostly still functioning through maintaining minimum supply chain. BDRCS is planning to conduct the market assessment and more detail information will be available in coming weeks.

WASH

Drinking water sources have been contaminated by flood water and this is forcing the affected population to drink unsafe water from contaminated water source. Many people are drinking flood water by boiling and trying to consume less. Shortage of safe drinking water is therefore a pressing concern and one of the priorities needs along with sanitation. Many people are taking shelters in schools and on the embankment. Due to overcrowding in shelters and temporary accommodation arrangements there is high concern regarding inadequate access to sanitation and hygiene facilities. Rapid observation found that many people are using temporary latrines with very poor superstructures. People who are still on the roadside or embankment do not have adequate sanitation facilities; a single latrine is shared by many families.

The interventions will be targeting people who are still living in temporary shelters during emergency phase. In addition to that the worst affected families will be considered who lost their water and sanitation facilities. In some shelters, there have been lack of adequate WASH facilities for both men and women. Besides, pregnant women, children and elderly people, and people with disabilities (PWD) face difficulties at the shelters as there have been lack of facilities for those groups. In these circumstances, immediately people need safe water for drinking and cooking, and temporary latrine facilities with hygiene kits/parcels including dignity kits (menstruation items) for menstruating girls and women. After the emergency period, there will be huge demand of construction of latrines, installation of new tube-wells, rehabilitation of damaged water points to address the special issues for PWD and other vulnerable groups while implementing WASH

⁸ The HCTT is co-chaired by one (1) official representing the Ministry of Disaster Management and Relief (MoDMR) and one (1) official of the United Nations (UN) nominated by the UN Resident Coordinator to strengthen preparedness, response and recovery efforts. The HCTT supports advocacy and resource mobilization efforts, promote humanitarian principles and ensure inter-cluster coordination.

facilities. There is also a need for hygiene promotion activities to reduce transmission of water-borne diseases and to encourage best hygiene practices.

Shelter

As per Needs Assessment Working group 13 July report around 12 per cent (2,833,757) people within the 24,479,820 people in flood impacted nine districts are estimated to be temporarily displaced. As per the National Disaster Response Coordination Centre (NDRCC) situation report, in 15 flood affected districts around 15,240 people live in shelters. Besides this around 975 open places (i.e. embankment, road, or high open ground), are being used as temporary unplanned settlements where people can take shelter. Around 3,624 livestock are also in these temporary unplanned settlements. Based on the projections, the number of people seeking shelter both on open, raised land and within community/ government flood shelters will be increased since flood water has not yet reached its peak. The people who are living in temporary shelters in unplanned settlements in the open places have limited access to community shelters, leaving them exposed to the elements and without minimum protection measures. There is a possibility of acute riverbank erosion when floodwater recedes, with the potential of causing damage to vulnerable houses of the char (tract of land surrounded by the waters) and low land areas. This will lead to a further deterioration of shelter conditions in the affected areas. With damage to shelter widespread and likely to deteriorate, affected families who are living in the open temporary unplanned settlements need both support for meeting emergency shelter needs and subsequently to undertake repairs or to rebuild their damaged homes afterward. Furthermore, many families have also had their essential household items and clothing lost or damaged by the floods and will need support to replace the items.

In the temporary unplanned settlements people are staying in makeshift shelters without basic household items and fuel facilities, which is predicting a possibility of an increase in Sexual and Gender Based Violence (SGBV) issue in the areas. Immediate need to provide the minimum household items and fuel facility to the affected people.

Health

Amid COVID-19 emergency crisis, Bangladesh has seen Cyclone Amphan in May 2020 and now, more than one million people stranded by flooding in country. Water levels at major rivers were rising in more than 20 districts and many new areas in northern, northeastern and central Bangladesh have been affected. During this global pandemic, where many areas in country has been identified as red zones and declared general holiday with the purpose of disease containment; the flooding is likely to complicate these recovery efforts. Heavy flood is causing people displaced from their home and huge crowding in shelters; thereby COVID-19 threat rises in flood-hit areas as thousands crowd shelters. Some of the worst affected areas include many of the regions may face the hardest hit by the coronavirus.

The health systems were already overstressed, and the resources were strained; now, infrastructures are damaged in inundated areas which will be causing double burden to the health system, battling coronavirus in one hand and flood borne diseases and health issues additionally. Specially upholding the health etiquettes to prevent COVID-19 is now challenging than ever. Where survival from flood is the priority to the community people, COVID-19 health rules have no means to follow as described in national leading dailies. Most of them have no way to maintain social distance, wash hands regularly, or use masks to prevent COVID-19 transmission. At this very moment, mass awareness is a major need with necessary public health support through distribution of masks and sanitizers in shelter centres, First Aid, Mental Health and Psychosocial Support (MHPSS), emergency medical support and mother and child health mostly. Alongside health support to the vulnerable population, duty of care and protection of frontline workers is very important. Provision of Personal Protective Equipment (PPE) items is one of the major needs and ensuring wellbeing of the staffs and volunteers is necessary.

Protection, Gender and Inclusion (PGI)

More than four months have passed since Bangladesh began its battle against the COVID-19 Pandemic and in a bid to curb the deadly infection, the government on 17 March closed every educational institution and suspended all academic activities. The decision remains in effect to this day, and prevailing circumstances have raised serious concerns among educationists, parents and students about the future of the academic careers of the young. The economic crisis inflicted by the novel coronavirus pandemic has resulted in an increase in child marriages among impoverished communities. Against the backdrop of the economic downturn – that has led to job and income losses both in formal and informal sectors – early marriage has become a way for families to rid themselves of the responsibility of caring for their girls.

Flood is causing immense problem for women and adolescent girls, as toilets and tube wells are inundated that hampers personal cleanliness and basic hygiene practices. This situation worsens more in the absence of privacy while taking shelters in collective centres. Lack of sanitary goods and disposal process, soaps are the main barriers of maintaining menstrual hygiene in the flood affected areas.

According to the MoDMR, as of 15 July, the people who have moved to around 1,086 flood shelters in 17 districts, out of them 11,916 are women, 4,078 children and 41 people with disabilities. To respond to this amplified crisis, proper PGI and Community Engagement and Accountability (CEA) orientations are required for the frontline staff and volunteers. Therefore, the team will ensure minimum protection, gender and inclusion (PGI) standards throughout the operation while collecting the sex, age and disability disaggregation data (SADDD), awareness on child marriage, awareness on personal security at the flood shelters, PSS support through trained staff and volunteers.

Targeting

Priority will be given to the displaced people living in both temporary collective shelters and makeshift shelters. In addition, BDRCS will prioritize and ensure the dignity, access, participation and safety of the most vulnerable population, which are the elderly persons, children including adolescents, marginal income farmers, female-headed households, lactating mothers, and people with disabilities. BDRCS in consultation with concerned stakeholders, will target the most affected districts and subsequently most affected communities. The operation will also be aligned with Movement Policy on Internal Displacement - 2009.

Scenario planning

Scenario	Humanitarian consequence	Potential Response
Most likely scenario	Water inundation will remain for 10 to 15 days when people will take refuge in makeshift shelters with minimum to no access to food and water. Once water will start receding, people will start returning to their home. Both the situation foreseen as poor health and hygiene condition with limited access to basic health and hygiene facilities. Emergency needs exists in terms of food, emergency shelter, health, WASH and cash assistance for at least two months.	This DREF will be utilized for the immediate need of the most vulnerable affected in terms of emergency food, emergency shelter, drinking water, sanitation and health. BDRCS will utilize the existing contingency stock for immediate response.
Worst Scenario	The inundation time may prolong as the monsoon rain continues both in local catchment area as well as in upper catchment areas in India. Another spell of flood may hit the same geographical area and some people remain displaced for longer period and greater recovery needs arise.	Considering the scale of damage and impact the active emergency appeal of Bangladesh Flood 2019 will be revised to scale up the operation. BDRCS will engage in more domestic fund raising, bilateral partnership with other partners to cover the gaps. More collaboration with local and national government to see the complementarity and optimum utilization of resources.

Operation Risk Assessment

Apart from the difficulty of road access in some affected areas and increased health risks considering on-going COVID-19 crisis, mosquito and water-borne diseases, debris and vehicle accidents, there are no major threats in Bangladesh which may directly interrupt the implementation of operational activities. However, to mitigate the security risks, adequate measures will be put in place. There is already a field implementation guide for BDRCS branches, volunteer considering the current COVID context which will be followed for this DREF implementation to minimize risk. The country office also has updated its framework on ABC-actioning business continuity, which will help to minimize the risk to sustain this critical humanitarian needs.

In addition, both BDRCS and IFRC has a 'Zero Tolerance' policy against corruption, discrimination against gender or race, sexual harassment, sexual abuse, bullying and as mitigating measure of the above risk, staff member/volunteer will be oriented accordingly with the IFRC policy and guidelines. During the implementation of this operation, BDRCS will follow the existing government and movement guidance related to the COVID-19 crisis.

B. Operational strategy

Overall objective

The overall objective of the operation is for BDRCS to meet the immediate of 5,000 households (25,000 people) affected by the floods - through the provision of emergency food, safe drinking water, emergency shelter and hygiene items, health support and multipurpose cash assistance. The planned actions under this DREF will help the affected communities to alleviate their sufferings and reduce the impacts in case the flood continues.

As the triggered Flood EAP is targeted to cover only 16,500 people with focus on early actions and considering the impact due to on-going flood in bigger geographical area – the DREF was launched to help BDRCS to reach another 25,000 people.

Summary of planned key activities

Sector	Activities	Target
Livelihood and basic needs	Distribution of dry/cooked food	10,000 people
	Provide Multipurpose cash grant (MPCG ⁹) assistance through financial service provider. BDRCS will provide 4,500 BDT to each household according to HCTT led cash working group.	5,000 HHs
Shelter	Provide Tarpaulins and tents along with technical orientation	2,000 HHs
WASH	Provide safe drinking water through mobilizing water treatment units (including distribution of jerry cans)	6 units
	Provide safe drinking water through repairing damaged water points	200 units
	Construct emergency latrines for communal use	100 units
	Mass awareness on hygiene promotion and provide hygiene parcels	2,000 HHs
Health	Mass awareness of COVID-19	25,000 people
	Provide PPE for frontline volunteers and staffs	200 people
	Provide emergency health service through BDRCS health centers	500 people
	Provide First aid and psycho-social support service	200 people
PGI	Ensure Minimum protection, gender and inclusion (PGI) standards throughout the operation	
	Provide assisting devices and associates to address the special need of people with disabilities.	

COVID-19 safe implementation

Design and deliver all proposed interventions in COVID-19 safe environment. Protection of the people being assisted as well as the volunteers, frontline staff and contractors shall be considered all the time. While delivering any humanitarian service, the COVID-19 containment and prevention is of the utmost consideration through remote risk communication and engagement, online training, self-explanatory guidance, etc. so that the coronavirus is not spread further, and it is everyone's obligation and accountability towards the global population to help contain this global pandemic. There is already an implementation guide in this regard developed by the IFRC and BDRCS team which will be followed during this DREF operation. In addition to risk communication, awareness raising; BDRCS is in process to allocate around 50,000 face mask and 20,000 soaps among the flood affected people and targeting people who take shelter in collective centers.

Localization of response

As evident in many disasters, local BDRCS district branches and volunteers are the first responders. BDRCS will continue enhancing the local district branch capacity through regular online training and guidance. And it is even more critical to strengthen local response capacity in the COVID-19 context. The district branches are trying to gather local fund through local fund-raising initiatives. There are many low-cost activities that the district branches are exploring to initiate like warning message dissemination, helping people to relocate in their own community, arrange cooked food in small scale mobilizing local funds, etc. These might be very small in number, but collectively this will have an impact and foster localized response. Such types of initiatives would be encouraged and supported if the situation get worse.

A dedicated operations team

There will be a dedicated operations team at both BDRCS and the IFRC to manage this operation. Given multiple emergency operations concurrently running in the country now, existing human resources in the BDRCS response department is extremely overburdened, hence emergency operation -based separate team shall be in place to manage the operation. There are already separate organograms for the previous [Emergency Appeal -Cyclone Amphan](#) and COVID-19. BDRCS has appointed deputy director level staff for this DREF operation and previous Cyclone Amphan operation to coordinate.

All other relevant services such as finance and reporting will be strengthened by adding capacity if needed. Human resources capacity available with the in-country partners has already been utilized for specific tasks and shall be leveraged as required and appropriate. However, given the travel restriction due to the COVID-19 outbreak, international surge deployment is out of context until for a few months or even a year. Therefore, the operation shall be managed by best utilizing locally available capacity and resources.

Duty of care: volunteers, staff and operations front line workers

The flood and ongoing Cyclone Amphan operation, COVID-19 pandemic crisis poses risks to the volunteers and frontline workers. Hence it is imperative to ensure full protection and safety of all volunteers and staff mobilized in the response. Staff and volunteer safety guidance is in place. To ensure the duty of care, BDRCS has already included around 2,000 volunteers and more than 300 staffs under insurance coverage. At the same time, an affiliation of BDRCS, the Holy Family Red Crescent Medical College and Hospital (HFRMCH) has been providing medical service in case any

⁹ https://fscluster.org/sites/default/files/documents/guidelines_on_mpcg_final_draft_march_6_2018-1.pdf

BDRCS volunteer or staff get infected by COVID-19. In addition to that considering COVID-19 pandemic, BDRCS has developed guidelines and providing masks and hand sanitizers for its staffs and volunteers.

Communication

Considering the worsening COVID-19 pandemic as well as the ongoing cyclone Amphan operation, priorities will be given to maintaining a steady flow of information and communication between operations in the field and major stakeholders including the media, Red Cross and Red Crescent Movement partners and donors. The IFRC Bangladesh CO communications team is in close coordination with the IFRC APRO communications team and is working closely with BDRCS to ensure that communications are steady, effective and timely. When the forecast based Early Action Protocol was activated, a press release was issued by IFRC to the international media and by BDRCS to the national media, accompanied by a range of other content on social media and digital channels. The joint team of BDRCS and IFRC in Bangladesh has formed virtual social media groups to gather photos and videos from the ground to share them on different social media platforms such as Facebook, Twitter, Instagram and others.

Throughout this DREF operation, the communications teams will continue to communicate the response activities of BDRCS and other Movement partners in the media and across all available channels, as well as to highlight the humanitarian crisis and needs of affected people as they recover from the disaster. The operation will maintain RCRC visibility in affected areas via branded materials such as relevant relief operation posters and banners, flags and BDRCS and IFRC vests to enhance awareness of the role of the BDRCS and IFRC staff and volunteers, who are providing support. Both BDRCS and IFRC will use their social media channels such as Facebook, Twitter, Instagram, Slack and as well as other official websites to share the operational activities with a wider global audience. Print and electronic media attention will be sought including via press releases to reach wider national and global audiences.

Community engagement and accountability (CEA)

CEA will be ensured through the provision of relevant lifesaving and other information to disaster-affected communities and creating accessible feedback mechanisms. The goal of this is to put the affected communities at the center of the operation and design the programme to help the most vulnerable people according to their needs. To ensure that the communities can raise concerns and the operation may receive feedback about the quality of aid, feedback mechanism will be in place – this may include setting up a feedback desk, information booth, complaints box and hotline number as well as email communication as preferred by the communities.

Prior to providing any assistances, the community people will be made aware of the assistance packages and services. BDRCS already has a hotline number (+88 01811458524) which is used throughout the country. Red Crescent Youth (RCY), National Disaster Response Team (NDRT) members and staff working on the ground will be equipped with Frequently Asked Questions documents¹⁰ (FAQs), to respond to the queries from the communities and stakeholders. Protection risks awareness flyers and other IEC materials looking at the needs and risks of the affected communities may be developed and distributed based on the information needs. Orientation for the staff and volunteers will be arranged via online. Specific activities around CEA will be integrated within all sectors. Facebook live will be organized to reach mass people with the live saving messages as well as information like dos and don'ts during and after floods.

Logistics and supply chain management

Logistics services aim to effectively manage the supply chain, including procurement, customs clearing and forwarding, fleet and transport support, storage at BDRCS warehouses (NHQ in Dhaka, depot based at Chittagong and other district level warehouses) in accordance with the operation's requirements and aligned to IFRC's logistics standards, processes and procedures.

The main supply chain strategy, in line with the government instructions is to source items locally where possible as per IFRC standard with implementation of IFRC procurement procedures. Under this DREF, hygiene parcel, bucket etc. will be procured locally. As for items that are not available locally such as tarpaulins as well as relief items utilized from the BDRCS disaster preparedness stocks will be replenished through the IFRC Asia Pacific Operational Logistics, Procurement and Supply Chain Management (OLPSCM) unit. IFRC CO logistics and procurement units along with the BDRCS counterpart will maintain the required coordination with the National Logistics Cluster for further information as needed.

BDRCS has their own transport capacity for transporting relief items to the operation areas. However, if needed, IFRC will facilitate on renting additional trucks to be able to transport relief items in accordance with the operation's requirements in compliance with IFRC's logistics standards, processes, and procedures. For fleet support, IFRC CO will accommodate the requirement within the existing capacity but depending on the requirements, short term rental vehicles may be hired to support the operation.

¹⁰ Based on common questions that normally asked by the community and local stakeholders.

Human resources

BDRCS has been utilizing existing staff, NDRT, NDWRT and volunteers for the response operation. BDRCS is planning to deploy more NDRT and NDWRT members from the adjacent districts where the movement restrictions due to COVID-19 has been relaxed in a certain degree. The district branches have deployed youth volunteers and members of the executive committees for warning message dissemination, evacuation, first aid, rescue and food distribution. To complete the emergency phase within the timeline, BDRCS will mobilize its staff and engage volunteers as required and appropriate. Staff and volunteers will be sensitized on gender, age, disability specific needs and on how to communicate respectfully with persons with physical, sensory and intellectual disabilities, persons with mental health disabilities, and older people. In all aspects, the COVID-19 precautionary measures will be followed in line with the government protocol and RCRC guidance. One of the staffing strategies in this movement restriction situation is that BDRCS will give priority on recruiting local volunteers trained on NDRT as project staff during the recovery phase. This will help the branches to utilize local available expertise.

IFRC staff in Bangladesh CO are assisting BDRCS in terms of planning, coordination, information management, need assessment, etc. In addition, IFRC staff will provide technical support for operational management. With the support of IFRC APRO, additional technical surge capacities may be engaged when there is a need and situation permit.

Information technology and information management

Accurate data assessments tool like Kobo Collect mobile application will enable BDRCS NDRT members, staff and volunteers to get useful information about the most affected people and at the same time ensuring data security. Information Management (IM) and programme personnel will support to analyze data and evaluate beneficiaries that require assistance. A Dropbox shared folder has been created to collect and share all relevant information within the NS, IFRC and in-country PNS. A WhatsApp group is also in place for sharing regular operational information among the BDRCS, IFRC and PNS.

IFRC CO has an Emergency Response Unit (ERU) trained IT & Telecommunication specialist to provide technical support at any situation to the volunteers about any IT technical issues. BDRCS, IFRC and in-country PNS have a pool of staff and volunteers trained on Mobile Data Collection (MDC), whose expertise may engage in this operation.

Planning, Monitoring, Evaluation and Reporting (PMER)

PMER is an integral part of the operational management cycle. While operation team will continuously be monitoring the progress, the PMER will support in periodic monitoring monthly through regular data collection and analysis of the database for the set of indicators within the operational plan. That in line with the implementation plan shall provide clear trend of work progress and potential bottlenecks to be addressed.

For COVID-19 situation, alternative monitoring methodology will be followed which includes local monitoring through BDRCS district unit (branch) office and distance monitoring from BDRCS NHQ and IFRC CO. Both type of monitoring will be carried out by using contextualize tools.

To measure the extent to which the operation has achieved its objective/goal, the best practices a lesson learned workshop or experience sharing session (due to COVID-19 situation) will be organized.

Administration and finance

IFRC and BDRCS programme and finance team will work closely to ensure the supply chain of cash towards the field. The operation will rely on existing financial management and administration systems in BDRCS and IFRC. Provisions have been made for communication costs related to the operation as well as financial charges and general expenses.

Security

From security analysis, currently the major threats in Bangladesh are increased health risks such as COVID-19 and seasonal mosquito borne diseases, difficulty of road access in some flood affected areas, road traffic accidents, sporadic civil unrest due to increased economical/financial tensions and instability in context of COVID-19 pandemic which may directly or indirectly interrupt the implementation of operational activities. However, to ensure the safety and security of all RCRC personnel involved in this operation, adequate measures will be put in place. This includes, but is not limited to, situation monitoring, regular or ad-hoc security/safety updates and advice, pre-deployment security/safety briefs on the current security context, contingency plans, and the completion of the respective IFRC e-learning courses (i.e. Basic knowledge and prevention measures for responders, Personal Security, Security Management, Volunteer Security).

The IFRC CO team is keeping close coordination with ICRC on the situation particularly at the flood affected areas. The security team will also be keeping close coordination with external partners in country as well as with the BDRCS units and local administrations in the operational areas.

C. Detailed Operational Plan



Shelter

People targeted: 10,000

Male: 5,000

Female: 5,000

Requirements (CHF): 36,743

Needs analysis: Refer to need analysis section of this EPoA.

Population to be assisted:

- 2,000 households will be assisted with emergency shelter through the provision of tarpaulins along with technical orientation.

Programme standards/benchmarks: According to the [Bangladesh Shelter Cluster standards](#), each targeted household will receive one¹¹ tarpaulin.

P&B Output Code	Shelter Outcome 1: Communities in disaster and crisis affected areas restore and strengthen their safety, well-being and longer-term recovery through shelter and settlement solutions	<i># of reached people with safe and adequate shelter and settlements. (Target: 10,000)</i>												
	Shelter Output 1.1: Shelter and settlements and basic household items assistance is provided to the affected families.	<i># of households provided with emergency shelter items to have a space that meet the minimum living conditions (Target: 2,000)</i>												
	Activities planned	Week	1	2	3	4	5	6	7	8	9	10	11	12
AP005	Selection of beneficiary and distribution of tarpaulins		x	x	x	x	x	x						
AP005	Replenishment of tarpaulins									x	x	x	x	x
P&B Output Code	Shelter Output 1.2: Technical support, guidance and awareness raising in safe shelter design and settlement planning and improved building techniques are provided to affected households	<i># of household received key messages on safe local building techniques (Target: 3,000)</i>												
	Activities planned	Week	1	2	3	4	5	6	7	8	9	10	11	12
AP006	Orientation on proper fixing of tarpaulins and its use along with key messages on build back safer		x	x	x	x	x	x						

¹¹ https://www.sheltercluster.org/sites/default/files/docs/sc_bangladesh_standards_and_guidelines_0.pdf



Water, sanitation and hygiene

People targeted: 10,000

Male: 5,000

Female: 5,000

Requirements (CHF): 73,485

Needs analysis: Refer to the need analysis section of this EPoA.

Population to be assisted:

- 10,000 flood affected people will be provided with safe drinking water through mobilization of water treatment units and repair of 200 water points (i.e. tube-wells) to ensure safe drinking water and access to 100 communal emergency latrines.
- 2,000 households will be provided with hygiene parcels and will receive information on key hygiene topics through hygiene awareness activities.

Programme standards/benchmarks: According to Bangladesh WASH cluster recommendation.

P&B Output Code	Outcome 1: Immediate reduction in risk of waterborne and water related diseases in targeted communities	# of people reached with WASH services (Target: 10,000)												
		# of people provided with safe water (Target: 10,000) # of water points repaired (Target: 200)												
	Activities planned	Week	1	2	3	4	5	6	7	8	9	10	11	12
AP026	Provide safe drinking water through mobilization of water treatment units		x	x	x	x	x	x	x	x				
AP026	Repairing of damaged waterpoints		x	x	x	x	x	x	x	x	x	x	x	x
AP026	Distribution and replenishment of jerry cans or buckets		x	x	x	x								
AP026	Mobilization of trained NDWRTs and volunteers		x	x	x	x	x	x	x	x				
P&B Output Code	WASH Output 1.3: Adequate sanitation which meets Sphere standards in terms of quantity and quality is provided to target population	# of emergency latrines constructed (Target: 100)												
		# of people reached by hygiene promotion activities (Target: 10,000)												
	Activities planned	Week	1	2	3	4	5	6	7	8	9	10	11	12
AP028	Construction of emergency communal latrines for affected people		x	x	x	x	x	x						
P&B Output Code	WASH Output 1.4: Hygiene promotion activities which meet Sphere standards in terms of the identification and use of hygiene items provided to target population	# of people reached by hygiene promotion activities (Target: 10,000)												
		# of households provided with a set of essential hygiene items (Target: 2,000)												
	Activities planned	Week	1	2	3	4	5	6	7	8	9	10	11	12
AP030	Awareness on hygiene practices considering COVID-19 including handwashing and Menstrual Hygiene Management (MHM)		x	x	x	x	x	x	x	x	x	x	x	x
P&B Output Code	WASH Output 1.5: Hygiene-related goods (NFIs) which meet Sphere standards and training on how to use those goods is provided to the target population	# of households provided with a set of essential hygiene items (Target: 2,000)												
		# of households provided with a set of essential hygiene items (Target: 2,000)												
	Activities planned	Week	1	2	3	4	5	6	7	8	9	10	11	12
AP030	Distribution and replenishment of hygiene parcels, coupled with orientation on usage of items		x	x	x	x	x	x						

Strategies for Implementation

Requirements (CHF): 67,095

P&B Output Code	S1.1: National Society capacity building and organizational development objectives are facilitated to ensure that National Societies have the necessary legal, ethical and financial foundations, systems and structures, competences and capacities to plan and perform	<i># of volunteers and staffs covered under Insurance (Target: TBC)</i>												
	Output S1.1.4: National Societies have effective and motivated volunteers who are protected													
	Activities planned	Week	1	2	3	4	5	6	7	8	9	10	11	12
AP040	Provision of insurance to volunteers and staffs to be deployed in the response operations		x	x	x	x	x	x	x	x	x	x	x	x
P&B Output Code	Output S1.1.6: National Societies have the necessary corporate infrastructure and systems in place	<i># of NDRT/NDWRT/volunteers/staffs mobilized (Target: TBC)</i> <i># of volunteers and staff oriented and trained (Target: TBC)</i> <i>Exit survey and PDM conducted (Target: Yes).</i>												
	Activities planned	Week	1	2	3	4	5	6	7	8	9	10	11	12
AP040	Orientation on needs assessment, fraud and corruption prevention, prevention and response to sexual exploitation and abuse (PSEA), PGI, CEA, PDM and exit survey for volunteers and staffs		x	x	x	x	x	x	x	x	x	x	x	x
AP040	Ensure CEA through establishing feedback response mechanism and using BDRCS hotline		x	x	x	x	x	x	x	x	x	x	x	x
AP040	Mobilization of NDRT, NDWRT, volunteers and staffs		x	x	x	x	x	x	x	x	x	x	x	x
AP040	Conduct exit survey, post-distribution monitoring and evaluation		x	x	x	x	x	x	x	x	x	x	x	x
AP040	Provide sectoral technical training and orientation for volunteers and staffs					x	x	x	x	x	x	x	x	
P&B Output Code	Outcome S2.1: Effective and coordinated international disaster response is ensured	<i>Engage with other humanitarian actors for coordinated humanitarian intervention. (Target: Yes - Inter Agency)</i>												
	Output S2.1.6: Coordinating role of the IFRC within the international humanitarian system is enhanced	<i>Regular coordination meeting conducted (Target: Yes)</i>												
	Activities planned	Week	1	2	3	4	5	6	7	8	9	10	11	12
AP049	IFRC country office supports NS in coordinating with other humanitarian actors, relevant clusters and working groups on a regular basis.		x	x	x	x	x	x	x	x	x	x	x	x
AP049	Coordinating the emergency shelter cluster		x	x	x	x								
P&B Output Code	Output S2.1.3: NS compliance with Principles and Rules for Humanitarian Assistance is improved	<i>CEA mainstreamed in operation (Target: Yes)</i>												
	Activities planned	Week	1	2	3	4	5	6	7	8	9	10	11	12
AP084	Ensure community engagement and accountability		x	x	x	x	x	x	x	x	x	x	x	x
P&B Output Code	Outcome S3.1: The IFRC secretariat, together with National Societies uses their unique position to influence decisions at local, national and international levels that affect the most vulnerable.	<i>The IFRC secretariat, together with National Societies uses their unique position to influence decisions at local, national and international levels that affect the most vulnerable (Target: Yes)</i>												

Funding Requirements

International Federation of Red Cross and Red Crescent Societies

all amounts in Swiss Francs (CHF)

DREF OPERATION

MDRBD026 BANGLADESH FLOOD 2020

16/7/2020

Budget by Resource

Budget Group	Budget
Shelter - Relief	26,000
Food	25,000
Water, Sanitation & Hygiene	69,000
Medical & First Aid	32,000
Other Supplies & Services	5,000
Cash Disbursement	280,000
Relief items, Construction, Supplies	437,000
Computers & Telecom	1,000
Land, vehicles & equipment	1,000
Transport & Vehicles Costs	6,000
Logistics Services	3,500
Logistics, Transport & Storage	9,500
National Society Staff	22,000
Volunteers	17,000
Personnel	39,000
Workshops & Training	15,000
Workshops & Training	15,000
Travel	16,500
Information & Public Relations	21,500
Financial Charges	2,750
General Expenditure	40,750
DIRECT COSTS	542,250
INDIRECT COSTS	35,246
TOTAL BUDGET	577,496

Reference documents



Click here for:



For further information, specifically related to this operation please contact:

In the Bangladesh Red Crescent Society

- Md. Feroz Salah Uddin, secretary general; phone: +880 1811458500. email: secretarygeneral@bdracs.org
- Md. Rafiqul Islam, deputy secretary general; phone: + 880 1811458501; email: rafiqul.islam@bdracs.org
- Md. Mijanur Rahman, director, disaster response; mobile: +880 0181 145 8522; email: mdmijanur.rahman@bdracs.org

In the IFRC Bangladesh Country Office

- Azmat Ulla, head of country office; email: azmat.ulla@ifrc.org
- Surendra Regmi, programme coordinator; phone: +880 1738196480; email: surendrakumar.regmi@ifrc.org
- Hasibul Bari Razib, senior manager, humanitarian response & shelter; email: hasibul.bari@ifrc.org

In the IFRC Asia Pacific Regional Office, Kuala Lumpur

- Mohammed Omer Mukhier, deputy regional director; email: mohammedomer.mukhier@ifrc.org
- Necephor Mghendi, head of DCPRR; email: necephor.mghendi@ifrc.org
- Vinod Muniandy, operations coordinator south asia; email: opscoord.southasia@ifrc.org
- Siokkun Jang, regional logistics manager; email: siokkun.jang@ifrc.org
- Antony Balmain, communications manager; email: antony.balmain@ifrc.org

In IFRC Geneva

- Nelson Castano, manager operations coordination; email: nelson.castano@ifrc.org
- Eszter Matyeka, senior officer, DREF; email: eszter.matyeka@ifrc.org
- Karla Morizzo, senior officer, DREF; email: karla.morizzo@ifrc.org

For IFRC Resource Mobilization and Pledges

- Alice Ho, partnership in emergencies coordinator; email: PartnershipsEA.AP@ifrc.org

For Performance and Accountability support (planning, monitoring, evaluation and reporting enquiries)

- Liew Siew Hui, PMER manager; email: siewhui.liew@ifrc.org

How we work

All IFRC assistance seeks to adhere to the **Code of Conduct** for the International Red Cross and Red Crescent Movement and Non-Governmental Organizations (NGO's) in Disaster Relief and the **Humanitarian Charter and Minimum Standards in Humanitarian Response (Sphere)** in delivering assistance to the most vulnerable. The IFRC's vision is to inspire, **encourage, facilitate and promote at all times all forms of humanitarian activities** by National Societies, with a view to **preventing and alleviating human suffering**, and thereby contributing to the maintenance and promotion of human dignity and peace in the world.

The IFRC's work is guided by Strategy 2020 which puts forward three strategic aims:



Save lives,
protect livelihoods,
and strengthen recovery
from disaster and crises.



Enable **healthy**
and **safe** living.

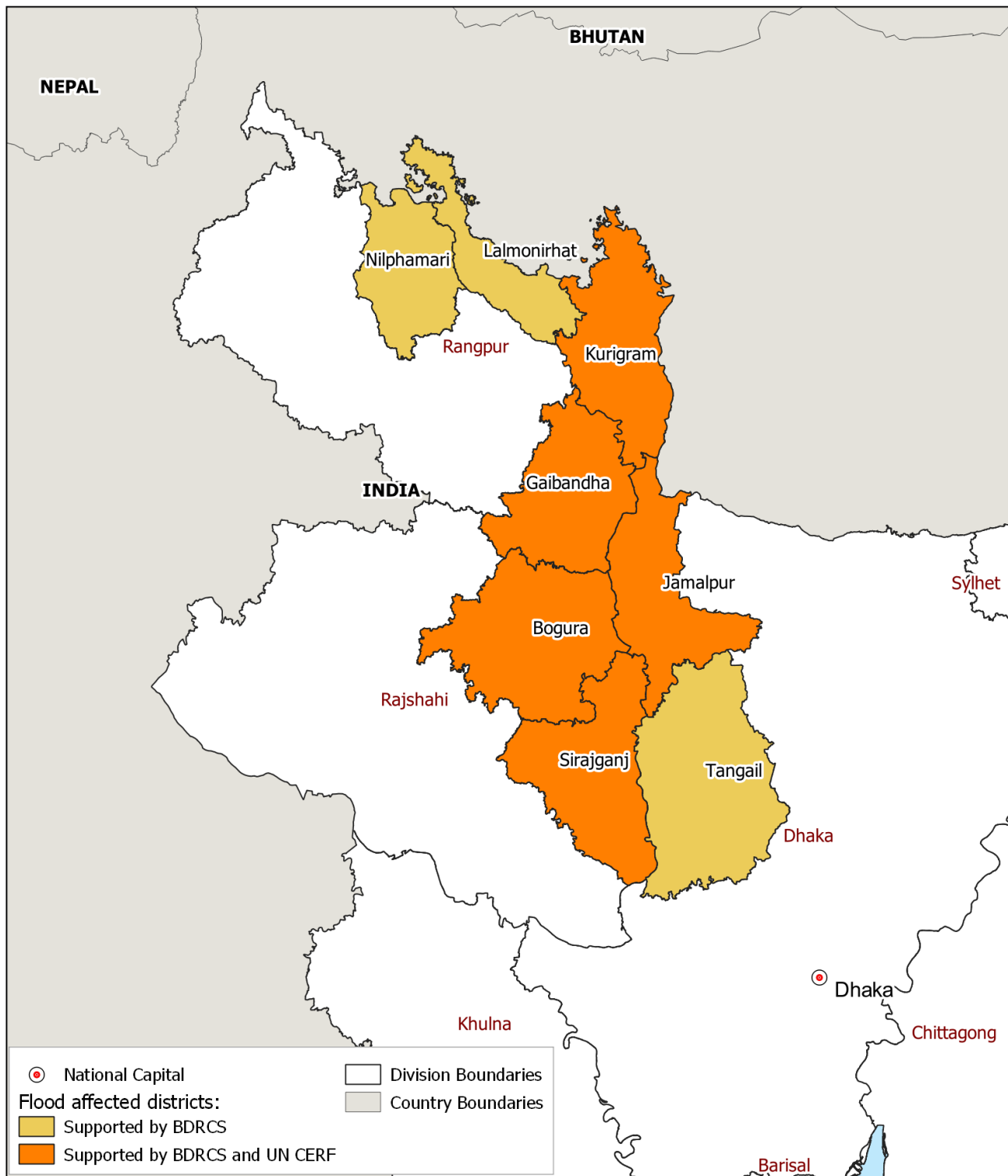


Promote social inclusion
and a culture of
non-violence and **peace**.



Bangladesh: Floods 2020 Emergency Plan of Action (EPoA)

17 July 2020



The maps used do not imply the expression of any opinion on the part of the International Federation of the Red Cross and Red Crescent Societies or National Societies concerning the legal status of territory or its authorities. Map data sources: OCHA, OSM Contributors, ICRC, IFRC

