



Emergency Plan of Action (EPoA)

Nepal: Monsoon Floods and Landslides



DREF Operation n°	MDRNP010	Glide n°:	FL-2020-000165-NPL
Date of issue:	03/08/2020	Expected timeframe:	3 months
		Expected end date:	30/11/2020
Category allocated to the of the disaster or crisis: Yellow			
DREF allocated: CHF 498,201			
Total number of people affected:	76,535 people (15,307 families)	Number of people to be assisted:	25,000 people (5,000 families)
Provinces affected:	All (7)	Provinces/Regions targeted:	7
Host National Society presence: Nepal Red Cross Society (NRCS). NRCS is an independent, volunteer-based and non-profit-humanitarian organization that delivers humanitarian service and support to the vulnerable people based on the seven Fundamental Principles of the International Red Cross and Red Crescent Movement. NRCS was established on 4 September 1963. NRCS was officially registered in Nepal after Government of Nepal acceded to the Geneva Conventions on 12 August 1949. It was recognized by the International Committee of the Red Cross (ICRC) and affiliated to the International Federation of Red Cross and Red Crescent Societies (IFRC) on 1 October 1964. NRCS has, over the years, grown to be the largest humanitarian organization in the field of disaster response in Nepal, with its network of seven provincial chapters as well as District Chapters extended in each of the 77 districts of the country. District Chapters receive organizational support from more than 1,508 Sub-Chapters, 5,410 Junior and 865 Youth Red Cross Circles and Co-operation Committees under them.			
Red Cross Red Crescent Movement partners actively involved in the operation: IFRC, ICRC, Danish Red Cross and other in-country partner National Societies (PNSs) such as American Red Cross, British Red Cross and The Canadian Red Cross Society.			
Other partner organizations actively involved in the operation: UN agencies, in particular UNICEF and WFP.			

A. Situation analysis

Description of the disaster

The monsoon rain that started from the last week of June has triggered flooding and landslides in many parts of the country. However, the rainfall became more intense in the second week of July 2020. Although the rainfall was diluted in the third week of July, it has now intensified with reported incidents of floods and landslides in many parts of the country. As a result, many rivers have crossed the warning level and are expected to cross the danger level with high chances of inundation. The incessant rainfall since 28 July in Kailali district has caused inundation that has affected hundreds of households. As of 29 July 2020, 141 people have lost their lives, mostly due to landslide in hilly districts, with at least another 57 missing¹. According to the NRCS situation report as of 30 July 2020, 15,307 families (76,535

¹ [Ministry of Home Affairs, Government of Nepal](#) (Nepali language)

people) have been affected in various districts and 7,106 families (35,530 people) have been displaced which is presented in table 1 below. There are crucial needs for shelter items, food items and water, sanitation and hygiene (WASH) services in the affected districts. In addition, in case of inundation in the *terai* region (lowland region bordering the Indian border) due to the excessive rainfall, there is a high risk of waterborne disease outbreaks.



One of the communities in Kailali district inundated due to continuous rainfall since 28 July 2020. (Photo: Baliya Sub Chapter, Kailali).

A total of 37 incidents of landslides that occurred since June 2020 has swept away many houses in specific pocket areas in 22 districts and has affected families that are now staying with their relatives, many of them are staying in nearby schools and other temporary shelters. As a result, shelter items remain one of the top priority needs in affected areas. Likewise, displaced families have lost their water points and sanitation facilities which may aggravate additional risk of health as well as water-borne diseases. Health, clean drinking water, sanitation facilities, livelihood promotion, protection along with health and hygiene promotion support is needed in the landslide affected areas.

The heavy rainfall that started on 28 July has inundated three municipalities of Kailali district, displacing 2,617 families (13,085 people) who are living in other safe areas out of their villages until water recedes. The government and NRCS along with other agencies are engaged in relief services by providing shelter items, hygiene items, and health related activities. However, there is a huge need for integrated response services focusing for shelter, health, WASH and protection in order to meet immediate humanitarian needs of the affected population in the area.

Table 1: Disaster situation (as of 30 July 2020) ¹	
No. of affected districts	27
No. of dead people	141
No. of missing people	57
No. of injured people	126
No. of affected families	15,307
No. of displaced families	7,106
No. of houses completely destroyed	3,222
No. of houses partially damaged	4,932
27 affected districts²: Parbat, Lamjung, Gorkha, Kalikot, Syangaja, Gulmi, Bajhang, Darchula, Bajura, Sindhupalchok, Kaski, Dailekh, Myagdi, Jajarkot, Rukum Paschim, Dhading, Shankhuwashaba, Jhapa, Tanahun, Baglung, Saptari, Lalitpur, Nawalparasi Purba, Chitwan, Dang, Surkhet and Kailali	

NRCS has deployed at least 85 trained volunteers on the ground to provide various immediate response like initial assessment, search and rescue, first aid, evacuation and immediate relief as needed. NRCS volunteers are also mobilized by all affected NRCS district chapters and are working continuously together with local authorities to conduct an Initial Rapid Assessment (IRA) and relief distribution as well as support communities to be safe and prepared for the worsening floods.

NRCS is also working together with the government, Movement partners and other organizations in COVID-19 preparedness and response operation. This changing context also increases the risks of COVID-19 spread. The events of floods and landslides are currently in pocket areas and are localized in the districts. Considering the scale of disaster and its impact, NRCS has requested a

Disaster Relief Emergency Fund (DREF) activation in order to provide support to the affected population. NRCS will implement the activities supported by this DREF allocation in close coordination with the local authorities.

The floods and landslides have damaged infrastructures such as roads connecting district headquarters to the affected municipalities and local markets as well as to livestock, agricultural land and crops, and daily consumables.

According to the weather forecast by Government of Nepal's [Department of Hydrology and Meteorology](#), the heavy rainfall that started from 28 July may cause an increased water level in most of the major rivers in the country, possibly

² NRCS daily sitrep as of 30 July 2020.

having high flow reaching to warning level or even crossing the warning level in Province 1, Province 2, Province 4 (Gandaki), Province 5 and Province 7 (Sudur Paschim). In addition, the department has issued warning for possible flash floods in small rivers in the said provinces.

Families displaced by the floods and landslides are taking shelter in evacuation centres, schools and relatives' homes. Refer to table 1 for further information. The disaster has damaged infrastructures such as roads connecting district headquarters to the affected village rural municipalities, bridges, culverts, local markets, transport vehicles as well as livestock, crops and daily consumables. This has created additional challenges to transport relief items to the affected areas. The continuous rainfall has also disturbed telecommunication networks in a few remote areas. The drinking water supply system has also been damaged, which has affected water supply to 70 households in different places of Sindhupalchok district.

Disaster situation

The electricity and communication are disrupted, and roads are blocked due to the floods and landslides in some places. Some of the NRCS volunteers are engaged in drainage maintenance for outflow of water.

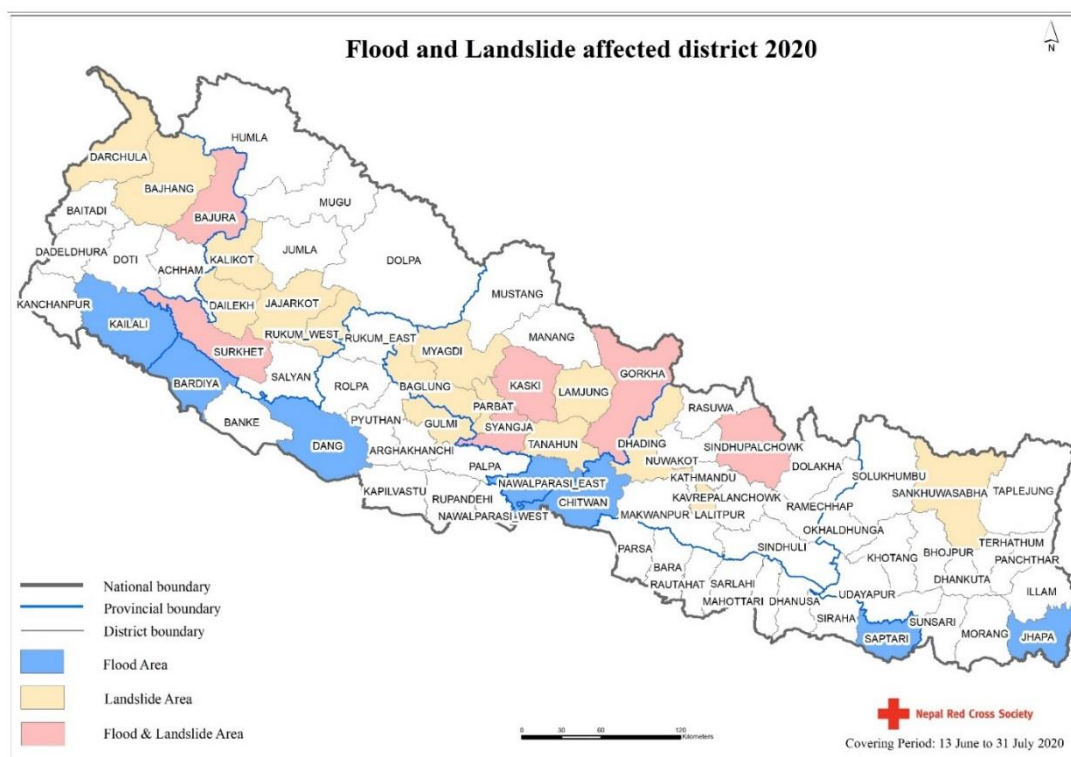
The affected communities are in immediate need of life saving supports such as tarpaulins for emergency shelter, safe drinking water and ready to eat food. In addition, the IRA shows that psychosocial support and restoring family links (RFL) services are needed immediately for the people affected by the disaster. The number of affected families has increased day-by-day and is likely to continue as some of the affected areas are challenging to access.



Water-logged in Siraha district. **(Photo: Siraha district chapter).**

COVID-19 situation

There is a high risk of COVID-19 transmission among the people affected by the floods and landslides as well as first line responders. Likewise, logistics have been challenging for response of the disasters due to restriction on free movement of vehicles. Similarly, as many schools or public spaces have been used for COVID-19 quarantine sites, it makes it difficult to evacuate people affected by the floods and landslides. In addition, there is risk of floods and landslides affecting the COVID-19 quarantine sites which will increase vulnerability of the people in quarantine sites, while it increases risk of COVID-19 spread in the community. As of 31 July 2020, 19,771 positive cases have been identified in Nepal out of which 14,399 have recovered and the remaining 5,316 are in isolation with 56 deaths due to COVID-19-related complications. There are 12,111 people in quarantine. As of 31 July 2020, seven districts of Province 2, Bagmati province and Sudur Paschim province including Kathmandu have reported more than 201 cases and therefore are categorized as being in the red zone by the government. As the number of COVID-19 cases is gradually increasing after a short pause of decrease in July, there is a high chance that the number will increase in the coming days in other districts as well.



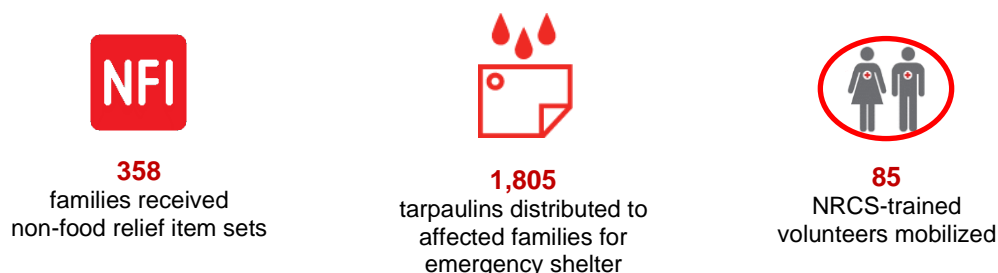
Summary of the current response

Overview of Host National Society response action

NRCS has been playing a key role in the floods and landslides response in affected districts. Immediately after the onset of floods, NRCS activated its emergency operation centre (EOC) at headquarters and affected district chapters and has been coordinating the response operation. The NRCS provincial and district chapters called emergency meetings and sub-chapters were informed and mobilized 40 volunteers including district disaster response teams (DDRT), community action for disaster response in emergency (CADRE) and first aid teams for evacuations, rapid assessments, relief distributions and logistics management in the affected districts. NRCS headquarters has sent alert information to the 22 national disaster response teams (NDRT) and they are at ready position for deployment.

NRCS has standby agreement with UNFPA focusing on reproductive health in emergency and a MoU with the Ministry of Health and Population for deploying doctors at the time of emergency as part of the Red Cross Emergency Clinic (RCEC). There is also a standby agreement with UNICEF covering emergency WASH, and with the World Food Program (WFP) for food and cash support. Finally, the NRCS is an active member of the cash working group under the humanitarian country team (HCT).

As an immediate response, NRCS distributed 358 full sets³ of non-food relief items (NFRI, which includes essential household items) 1,805 tarpaulins, 906 blankets, 70 kitchen utensil sets and two family tents to affected people.



³ NRCS NFRI set consists of tarpaulin-1 piece, blankets-2 pieces, female saree-1 piece, male dhoti-1 piece, suiting cloth-3.5 metres, printed cloth-7 metres, plain cloth-2 metres, terri-cotton cloth-4 metres, kitchen utensils-1 set, water bucket-1 piece, nylon rope-10 metres and plastic packaging bag-1 piece.

Similarly, NRCS has dispatched a number of items from its central and regional warehouse to district chapters. Details of which has been demonstrated in table 2.

The NRCS district chapters and sub-chapters are working closely with the concerned local government and other humanitarian agencies. The NRCS provincial committee coordinated with the affected districts and participated in the meeting called by provincial disaster management committee (PDMC) and liaison to NRCS EOC and district chapters. Local disaster management committee (LDMC) and community disaster management committee (CDMC) members. NRCS sub-chapters' volunteers were actively involved to disseminate the flood and landslide alert messages, which helped the communities to evacuate on time (throughout the affected districts). Security forces rescued the affected by using the life jackets and rope, those response kits were provided by the NRCS in different area of the country. NRCS is regularly coordinating with local stakeholders and participating in the emergency meeting called by district disaster management committee (DDMC) in affected districts.

Items	Unit	Quantity
NFRI set	set	2,923
Tarpaulin	piece	1,330
Blanket	piece	400
Hygiene Kit	kits	100
Squatting Plate	piece	4

Overview of Red Cross Red Crescent Movement actions in country

The NRCS has kept all partners updated on the situation, current needs and response plans through coordination Meetings, floods operation meetings and through sharing of progress reports.

The IFRC Country Office (CO) in Nepal is providing daily technical support to NRCS in preparing for and responding to disasters and crisis in Nepal, including the current ongoing COVID-19 operation. The IFRC CO coordinates further with the IFRC Asia Pacific Regional Office (APRO) for additional surge capacity, including financial contribution to the efforts through the DREF allocation.

IFRC is supporting NRCS in the preparation of situation reports and technical support in conducting relief operation. IFRC has supporting role in emergency shelter cluster and coordinating with emergency shelter members. IFRC is participating in different meetings of the National Emergency Operation Centre (NEOC) and of the HCT along with NRCS.

Likewise, in-country PNSs including American Red Cross, British Red Cross, The Canadian Red Cross Society, Japanese Red Cross Society, Finnish Red Cross and Swiss Red Cross are supporting the operation, actively monitoring the situation and participating in the meetings organized by NRCS and IFRC. In particular, Danish Red Cross is providing technical support to the IRA process and information management in the NEOC. ICRC has been supporting NRCS in carrying out RFL services.

Overview of other actors' actions in country

The Government of Nepal (GoN) launched its nationwide Monsoon Preparedness and Response Plan in early July and immediately activated its NEOC to coordinate relief activities in the flood affected areas. The Ministry of Home Affairs (MoHA) and its National Disaster Risk Reduction and Management Authority (NDRRMA) are taking the lead role in coordinating the response operation with all levels of government, conducting rescue, evacuation, rapid assessment and relief distribution. The Government has mobilized security forces for search, rescue and evacuation of the people stranded from floods and landslides areas. They have been mobilizing helicopters for search and rescue. DDMC and MoHA are actively engaged in responding to the situation. Emergency meeting is held in MoHA where NRCS and IFRC are participating on regular basis. Likewise, NRCS is a member of the Disaster Management Committees at all levels (provincial, district and municipalities) and works closely with respective authorities in responding to the needs of affected people.

The Department of Hydrology and Meteorology established toll free numbers for flood early warning system and circulated SMS from time to time. The DHM also regularly updates information on their website, with flood forecast every 24 hours, which NRCS supports to disseminate at community level.

The HCT mechanism is very active in the country, with all clusters being led by line Ministries and ongoing coordination at strategic and operation levels. The Emergency Response Plan for the monsoon was finalized in June 2020 and the Government of Nepal requested its activation on 16 July 2020. The Association of International NGOs (AIN) is representing the interests of all INGOs in the HCT mechanism and information is being shared through related clusters.

Needs analysis, targeting, scenario planning and risk assessment

Needs analysis

NRCS, local government and Nepal Police together carried out IRA in the affected districts. Based on IRA report, there is a need for emergency shelter, food and essential household items, protection, basic health services, RFL and psychosocial support (PSS) services, provision of safe drinking water as well as improved sanitation in the affected areas.

Shelter

Floods have affected mud and brick houses, with mud mortar houses being severely affected in the plains areas of the southern part of Nepal, whereas concrete houses were observed as less damaged due to inundation and breaching of earthen embankment in some rivers. Similarly, landslides caused by massive rain swept away or damaged houses in the hilly districts. The NFRI full set is in high demand from the hilly districts whereas tarpaulins and basic shelter NFRI are assessed as necessary shelter items to be supported in *terai* areas. The affected people and families are staying out in the open space and collective centres, so there is a need of tarpaulins, ropes and shelter toolkits and trained volunteers to help build temporary shelters and pass on relevant technical messaging. While responding to COVID-19 situation, most of existing infrastructures such as school buildings and public buildings have been occupied by quarantine centres and there is less possibility to use those infrastructures for temporary evacuation centres for the people affected by floods and landslides. Therefore, there may be additional need of tents or tarpaulins to set up camps or temporary shelters, along with required practical orientation or training.

Livelihood and basic needs

The landslide incidents along with floods have swept away agricultural land, crops and irrigation canals, so significant impact on the livelihood of the affected families is anticipated. Households lost livestock and do not have enough food and income for food. The majority of the affected people work on agricultural land as tenant farmers. Food and daily household items are immediately needed to support these families that can be addressed through cash and voucher assistance. In-depth assessment is needed for identifying their needs to protect and or restore livelihoods. Also, NRCS intends to promote the use of local materials like bamboo wooden pole for the establishment of temporary shelter. Therefore, the additional top up cash support will be provided to the targeted families.

Health

There are COVID-19 isolation wards in different hospitals at district and national levels. Likewise, there is possibility of increase in COVID-19 cases as well as outbreak of water-borne diseases such as diarrhoea. Mosquito breeding in this season is being increased and cases of dengue have been observed in some areas. People living in southern belt of the country are in need of additional mosquito nets, especially during the monsoon season. Similarly, snakebite along with vector borne disease (e.g. malaria, dengue) can cause severe consequences among displaced population; especially children, senior citizen and pregnant women are at high risk of infections. In disasters, distress level of survivors and community members who have lost their love ones, livestock and livelihood remain high. They are in need of mental health and psychosocial supports including psychological first aid service. Mobilization of trained volunteers for disseminating health and hygiene awareness messages including importance of physical distancing is important to prevent possible risk of COVID-19 transmission and well as other epidemic outbreaks.

NRCS can also count on the additional technical support and expertise of its RCEC. Finally, NRCS is taking necessary steps to ensure safety and security of staff and volunteers (first responders) and there is need of protective items such as masks, gloves and sanitizers for the responders.

Water, sanitation and hygiene

Since the existing water sources may be contaminated in the affected areas, there is a need to support affected population with clean drinking water and WASH kits to purify water as well as to keep drinking water safely in their

houses. Likewise, the floods and landslides are affecting household latrines which will cause increase in open defecation in targeted areas. There is a need to support the establishment of emergency toilet as well as support household latrine to those families who lost their latrines. Finally, considering the probability of outbreak of water-borne diseases in some affected areas, hygiene promotion activities should be promoted. Basic community sanitation, cleaning of stagnant water, distribution of hygiene kits, awareness raising on proper hygiene practice are essential to be conducted in the areas.

Targeting

NRCS will ensure the relief efforts are associated with the established standards of GoN and cluster system and will apply a gender and diversity sensitive analysis in beneficiary selection, including by targeting women-headed households, pregnant or lactating women, single women, people with a disability, old-aged people, people facing caste-based exclusion and COVID-19 affected people. The **beneficiary selection criteria** used by NRCS includes:

- People those are affected by floods and landslides.
- Households headed by children below 18 years or elderly above 65 years of age.
- Households headed by women and single women.
- Households involved in agriculture and livestock activities before floods who have not been able to restore their livelihood activities after the floods.
- Households having home quarantines or COVID-19 affected people (positive cases and having high potential).
- Death of an earning member of the family due to floods and landslides and COVID-19 or multiple causes.
- Households comprising of people with physical disability and/or mental disability and persons with chronic illness.

Estimated disaggregated data for population targeted

NRCS has been producing daily sitreps based upon the IRA being conducted in close coordination with the government authorities at local level. As per NRCS sitrep dated 30 July 2020, 134 people have lost their lives due to water induced disasters injuring 95 and 51 have gone missing. Similarly, 76,535 people of 15,307 families have been affected by the disasters where 35,530 people of 7,106 families⁴ have been displaced. Age disaggregated data will be provided later.

Scenario planning

The scenario planning will be updated very regularly in line with the forecast and analysis provided by the authorities, in particular the [Department of Hydrology and Meteorology](#), as well as advice received on daily basis from the Red Cross Climate Centre (RCCC).

The EOC is compiling information and coordinating with related departments of the NRCS national headquarters (NHQ) to define the districts to be prioritized based on the evolving situation (casualties, impact of livelihoods, humanitarian needs, etc.), gap analysis and budget available. The IFRC CO will support this process on a daily basis.

Overall risks and mitigation measures	
Anticipated risks	Mitigation measures
Problems for responders to have access in affected areas and transport relief items due to inundation	<ul style="list-style-type: none"> • Coordinate with security forces and private sectors to utilize air lifting services • Mobilize local volunteers and community members to open the road blockages through cash for work programme
Challenges to conduct timely assessment and select beneficiaries due to socio-political interests	<ul style="list-style-type: none"> • Apply community engagement and accountability (CEA) approach and enhance better coordination with local community, local government and social groups
Probability of not maintaining physical distance and norms of coughing hygiene due to congested space and lack of knowledge in evacuated people	<ul style="list-style-type: none"> • Disseminate risk mitigation communication messages through media and digital means with appropriate COVID-19 messages to affected people in camps and community including support of masks
No clear directives from the GoN on cash and voucher assistance in country can pose challenges in cash-based intervention to	<ul style="list-style-type: none"> • Other modalities such as multi-purpose cash grant and voucher will be further explored with the humanitarian agencies and local government to support the most vulnerable population.

⁴ Average family size in [Nepal](#) is 5.

address needs of most vulnerable people affected by the floods and landslides	
Delays in implementation due to instability or prolonged transition of the NRCS Central Executive Committee	<ul style="list-style-type: none"> • Coordination dialogue, diplomatic intervention with concerned stakeholders (Government, Movement partners) • IFRC direct procurement as well as cash advance to district chapters as necessary
Potential impact on procurement and supply chain, especially from abroad due to COVID-19-related restrictions (land border control, limitation in flights, etc.)	<ul style="list-style-type: none"> • Use of international procurement system (such as IFRC procurement system) • Extensive leverage of coordination with Government at all levels and relevant agencies/stakeholders for smoothing supply chain process. • Make provision of required transportation cost
Delay in response due to geo-physical complexity	<ul style="list-style-type: none"> • Proactive involvement of district chapter and sub-chapter in close coordination with local government
Impact of COVID-19 pandemic can affect overall monsoon response cycle including the potential risk to the NRCS staff and volunteers	<ul style="list-style-type: none"> • Use of appropriate response strategy line with the government/WHO guideline • Prioritize safety security of staff volunteers and targeted people (personal protective equipment (PPE), insurance, orientation) • Make provision of situation decision at local level as per the situation of target area and as per the decision of local government • Use of business continuity plan of NRCS and IFRC CO to ensure safety and security of its staff and volunteers.

B. Operational strategy

Overall Operational objective

The operation objective is to address the immediate relief needs of an estimated 25,000 people affected by floods and landslides. The needs of 5,000 targeted families in floods and landslides affected districts are to be addressed through the provision of goods and services related to shelter, WASH, protection, food and health for an initial period of three months.

Strategies for implementation

This operation aims to meet the immediate humanitarian needs of total 5,000 families (25,000 people) affected by the flood and landslides. The National Society has activated its EOC along with its Monsoon Response Plan 2020 immediately after the disaster, coordinated all response operation, mobilized volunteers in the field, ensured timely assessment within 24 to 48 hours, and prepared operational plans within a week.

In general, the operation will consider the following implementation strategies:

Coordination and partnership

NRCS, according to its auxiliary role to the Nepal Government in humanitarian assistance during disasters and conflict, has been closely working together with the Government to respond to any type of disaster since its inception. NRCS has been working in close coordination with the GoN at central, provincial, district and municipal levels in disaster preparedness and response. Assessment and relief activities are carried out in coordination with NEOC, NDRRMA and District Emergency Operation Centre (DEOC). The IRA is conducted in close coordination with district and municipality authorities. Likewise, response activities are coordinated with relevant local authorities as well as clusters at provincial and national levels. Finally, the existing standby agreements with different agencies will come into effect as the need in a large-scale disaster.

Community engagement and accountability (CEA)

NRCS focuses on participatory response mechanism during a disaster, supporting the community to recognize needs, identify beneficiaries and plan implementation. The hotline number will be promoted through stickers distribution to the communities together with relief distribution and orientation programme. The hotline number will also be displayed in NRCS social media and on its website. In the process, community voices are heard and feedbacks are incorporated to enhance service to the community. Some of the CEA can be ensured by establishing a suggestion/feedback box in the community or temporary shelter. Apart from that, the district chapters and sub-chapters are readily available to hear out and address issues of the community. NRCS will maintain a register at district chapter and NHQ levels to ensure proper

documentation of the feedback and respond. The 1130 hotline service of NRCS that provides service from 07:00 to 19:00 for six days a week can be used by the community members to register their complains or provide feedback. All activities conducted are carried out with the knowledge of the local government and willingness of the community, ensuring their engagement as per relevant guidelines of the national society to ensure transparency and accountability towards the community, the government and the donors.

Inclusive response, leave no one behind

NRCS will ensure social protection and inclusive response of all affected population. Reaching to the most vulnerable through timely information, relief aid and services will be key strategy for the monsoon response. Women, children, elderly, people with disability, sexual minorities, excluded and marginalized communities will be given special focus as per their needs and requirement to safeguard their rights to make sure that no one is left behind.

Timely response

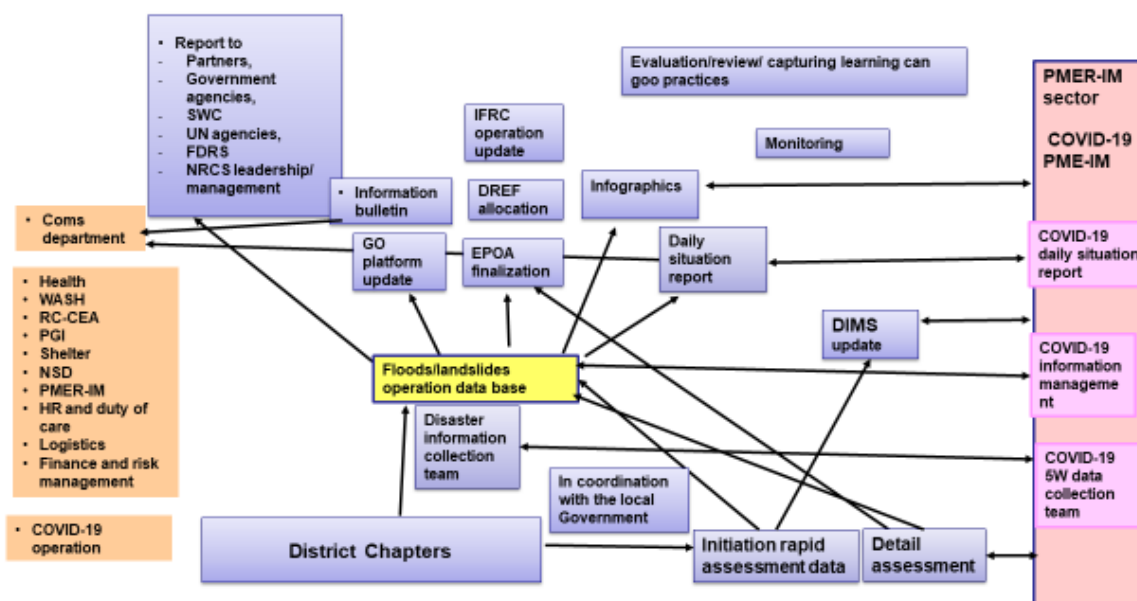
NRCS will ensure a timely response through deployment of its trained staff and volunteers. The district chapters have been sent alert letters, and NDRTs are at ready position for being deployed. The district chapters have trained CADRE teams and first aid volunteers who come into action at the time of a disaster. Early warning systems have been set up for providing prior information so that people can move to safety. Regional warehouses have stockpile of NFRIs to be distributed as per need. Such stockpiles have been depleted as part of COVID-19 response, however replenishment was initiated in May 2020 to address some of the gaps.

Planning monitoring evaluation reporting and information management

Stronger planning, monitoring, evaluation reporting and information management (PMER-IM) system will be practiced in the operation. The PMER-IM major strategies and activities have been linked with NRCS’s existing PMER-IM division from the beginning of the operation. Participatory and bottom up planning approach have been practiced during the development of the EPOA and this plan has been developed based on the gaps identified from the IRA of the affected communities and sectoral teams. Likewise, a detailed assessment will be carried out to find out specific needs of the affected communities.

The Disaster Information Management System (DMIS) of NRCS will be used to manage information of the operation while NRCS will also regularly update information on the IFRC GO Platform. Local level monitoring such as monitoring of the operation’s activities through sub-chapters and district chapters will be emphasized, while NRCS NHQ will provide orientation and tools to local units for monitoring. Likewise, regular situation updates, information bulletins and infographics will be developed for documentation and sharing of the operation updates. Cooperation and collaboration mechanism will be established between PMER-IM of COVID-19 preparedness and response operation.

Floods and landslides and COVID-19 PMER-IM Coordination mechanism



Resource mobilization

The resource mobilization unit has been working in identifying resource generating sources for the National Society through both internal and external means and partnership. Human resource has been designated for the required work and documentation is in process for setting up an effective resource mobilization system in the National Society.

NRCS Monsoon Response Plan indicates that:

- NRCS will implement response services targeting up to 5,000 families with its own resources.
- The IFRC DREF will be activated beyond this threshold (according to the NRCS Monsoon Preparedness and Response Plan 2020, NRCS plans to request a DREF activation if more than 5,000 families are affected by a disaster), while also actively searching for other resources available in country, including through the existing partnerships with UN agencies and well as PNSs and ICRC.
- Beyond in-country support and DREF activation, the launch of an Emergency Appeal will be considered in case of further need.

Compliance with zero tolerance

NRCS will comply with the zero-tolerance policy on sexual and gender-based violence (SGBV), harassment at workplace, child protection, prevention on sexual exploitation and abuse (PSEA), fraud, corruption and other type of misconduct. There will be strict monitoring in this regard and any type of misconduct found would be reported and dealt with according to the policies of the National Society and the Government of Nepal.

Civil-military coordination

NRCS will ensure core humanitarian value and its principle of impartiality and neutrality during its response operation. In Nepal, Nepali Army, Armed Police force and Nepal police are always in front line to respond, especially in search and rescue, and transport of relief materials to remote part of country, including air lift services. Therefore, NRCS district chapter and sub-chapters have to work in close coordination with security forces maintaining the value of humanity and appropriate use of the Red Cross emblem.

Sustainable, build back better and safer

NRCS has been working towards a sustainable approach to disaster management and follows a cycle of community preparedness, assessment of the disaster, providing immediate relief to cater to immediate needs and planning and implementing long term recovery programmes. This approach ensures sustainability of the community and also engages them regularly in each part of the disaster management cycle for building back better and safer. Also, emphasis will be given to promotion of green solution and protection of environment by reducing additional risks.

Cash and voucher assistance

Cash and voucher assistance (CVA) will be integrated with shelter, health, protection and WASH related activities and cash support will be provided to the beneficiaries depending on functionality of local markets.

Human resource and duty of care (including security)

NRCS provides COVID-19 insurance, orientation and personal protective items to all the frontline staff and volunteers involved in the floods and landslides operation. Both IFRC and NRCS have developed a business continuity plan and have security protocols in place to monitor threats as well as ensure timely and effective safety of all involved in the operation. Some possible risks for staff and volunteers are transmission of COVID-19 infection and road blockage due to flood and landslide, blocking access to the target area. NRCS provides security briefing sessions for staff and volunteers. Four staff members of the NRCS headquarter will be supporting the operation (1 coordination, 1 PMER-IM, 1 WASH and 1 PGI) while an RDRT deployment might be required although ongoing COVID-19 travel restrictions are limiting access to Nepal, so this will have to be further analyzed in coming days.

Logistics and supply chain

As agreed with NRCS, the IFRC CO will coordinate on the international procurement with APRO's Operational Logistics, Procurement and Supply Chain Management (OLPSCM), and take the lead for national-level procurement efforts involving NRCS colleagues in the process and engaging PNSs' logisticians. District chapters will manage local-level procurement as per existing NRCS rules. Transportation will have to take into consideration the complexities and restrictions due to COVID-19 context, benefitting from the advice of WFP as well as IFRC and government where needed. NRCS will coordinate with the government and private companies at local level to ensure goods and personnel can reach remote affected areas as per needs. NRCS has warehouses in 12 strategic locations throughout the country and pre-positioning relief items in these warehouses. Besides this, every district chapter has been prepositioning a minimum of 50 sets of relief items. NRCS has clear supply chain from NHQ to its warehouses and up to the district chapters from these warehouses.

Communications

NRCS and IFRC communications teams will work together to promote the work of the volunteers on the frontline of the response, helping those affected by the landslides and floods. Communications will highlight the humanitarian needs of

people affected, with a view to further position the NRCS as a partner of choice in humanitarian action while also relaying the voices of people at risk via national and international Red Cross social media and other digital channels as well as news media.

The communications will generate visibility and support for the humanitarian needs and the Red Cross Red Crescent response. Close collaboration will be maintained between the IFRC Asia Pacific regional communications unit, IFRC Nepal Country Office and NRCS to ensure a coherent and coordinated communications approach. Written and audio-visual content will be produced, along with relevant social media and digital products, as appropriate. Communications content will be promoted on regional and global IFRC channels and shared with National Societies in the IFRC network. Media and social media scanning will aim to increase effectiveness and contribute to assessing and managing risks.

Sector specific strategies

Shelter

NRCS volunteers will be used to identify affected families who are in need for emergency shelter and those who need a full set of NFRI. NRCS will render shelter support by providing emergency shelter items (tarpaulin, rope and toolkits) to the families who have lost their houses and living in open spaces, supporting them to establish temporary shelters. Likewise, NRCS will distribute NFRI items (tarpaulin, blanket, clothing materials, kitchen utensils and bucket) to the families who have lost their homes along with household items which will enable them to establish temporary shelter and fulfil immediate need of items that they need every day. Households with partially damaged houses will be supported with shelter toolkits for repairing their houses. NRCS will prioritize cash support to those families who need to purchase basic tools (fixing tools like bamboo, nails, etc.) to establish temporary shelters. Due to the ongoing COVID-19 response and the community centres being used as quarantine sites, there could be a need of camp setting for temporary shelter which requires more coordinated efforts with other clusters.

Livelihood and basic needs

NRCS will mobilize its staff and volunteers at district chapter and sub-chapter levels to identify and target families requiring immediate food support. Further, NRCS will coordinate with DDMC, district level organizations and WFP as well as rural/municipality and local actors to collect ready-to-eat food (RTEF) and distribute them to the affected families. NRCS has an agreement (MoU) with WFP for distribution of staple food (rice, lentil, salt, sugar) and cash in case of disaster during the relief phase. Upon assessing the functionality of local markets, NRCS will best utilize its available resources (including through this EPoA) to provide multi-purpose cash assistance. Cash for work being the government promoted modality in COVID-19 response, it will be applied where possible while also considering unconditional cash support for people with specific needs.

Health

NRCS volunteers and staff mobilized in this operation will have an orientation on COVID-19 safe practices during disaster response. NRCS has mobilized its trained volunteers on first aid and PSS immediately after the floods. In addition, NRCS has established a mechanism to coordinate with Health Service Department, hospitals, and local health service centres. NRCS volunteers will be mobilized for health promotional activities in affected communities, where it will be critical to ensure physical distancing due to ongoing COVID-19 threats. Volunteers will be engaged to disseminate messages on nutrition, hygiene behaviour, vaccination, antenatal care (ANC) check-up, breast feeding, child health, etc. Similarly, messages will be delivered on protection from mosquito and snake bite, use of bed nets as well as prevention from water-borne diseases and sanitation. In case of further needs, NRCS, in close coordination with health service providers, will deploy the RCEC with trained human resources to the affected areas where service is needed. Also, NRCS volunteer and ambulances will be engaged on first aid services as well as transportation of snake bite victims to concern health centres.

Water, sanitation and hygiene

NRCS will mobilize volunteers and staff for providing clean drinking water to affected families. Volunteers will support to clean water points, distribute water purification and orient families on how to keep water safe and clean. In addition, NRCS will provide families who lost their toilets by providing emergency toilets. In case displaced families are kept in temporary shelter in camp setting, NRCS will establish emergency toilets in the camps.

Also, NRCS will mobilize volunteers and staff for the distribution of WASH items (hygiene kit, bucket, soap, and aqua tabs) to affected families. Safety and Security of mobilized volunteers will be taken care considering COVID-19 and flood situation. Trained NRCS volunteers will conduct hygiene promotion activities taking care of COVID-19 response in the affected communities. Both types of information education and communication (IEC) materials (emergency and COVID-19) will be disseminated in the community. All above activities will be conducted in close coordination with provincial, district and municipal authorities.

Protection, gender, inclusion (PGI)

PGI related issues will be mainstreamed in all sectors, from assessment to implement, monitoring and reporting. PGI will be considered while conducting assessments, through gathering sex and age-disaggregated data, analysis of who is being reached and who is missing out, and constant reporting on protection issues for children, risks of gender-based violence and sector-specific safety concerns to the EOC by all team members and volunteers.

The gender equality and social inclusion (GESI) department of NRCS will provide technical support to the respective sectoral leads as well as district chapters in ensuring that the Minimum standard commitments to gender and diversity in emergency programming (published by IFRC and endorsed by NRCS) are applied throughout planning and implementation of response activities.

All volunteers and staff will receive a pocket card with the Red Cross Hotline number and updated community-based GBV assistance information, as well as orientation on child protection reporting lines and practices. NRCS can work closely with mothers' group and womens' group to promote community-based initiatives on SGBV and protection issues. In addition, staff and volunteer will have to sign the anti-harassment and child protection Code of Conduct before their deployment.

AP005	Distribution of 3,000 full sets NFRI	X	X	X	X	X	X	X	X	X	X								
AP006	Technical orientation to NRCS volunteers for emergency shelter construction (20 orientations for 10 volunteers each = 200 volunteers)			X	X	X	X	X	X										
AP041	200 volunteer mobilization and insurance			X	X	X	X	X	X	X	X								
AP005	Transportation of NFRI to district temporary warehouse from NHQ or regional warehouses	X	X	X	X	X	X	X	X										
AP005	Replenishment of 3,000 NFRI sets following the NRCS procurement procedure				X	X	X	X	X	X	X	X							
AP005	Support 500 selected vulnerable households with top up cash in addition to NFRI sets			X	X	X	X	X	X										



Livelihoods and basic needs

People targeted: 5,000

Male: 2,400

Female: 2,600

Requirements (CHF): 27,788

Needs analysis: Water-logging due to floods as well as landslides affected agricultural production and livelihoods of thousands of people in the most affected districts. Households also lost livestock and do not have enough income to replace them.

Risk analysis: There has been a lack of clarity in past weeks around the government standards and acceptable practices related to cash transfers. The NRCS is part of the Cash Coordination Group which engages with national authorities on behalf of the HCT, however the ongoing dialogue might impact negatively on timely delivery of support at community level, in particular if local authorities are reluctant to cash interventions. It is believed that this could be solved through local dialogue and coordination, given the past experience of NRCS in provision of cash assistance.

Population to be assisted: 1,000 families who have lost their food source and livelihoods due to floods.

Programme standards/benchmarks: Government applicable regulations and tools from the Cash Coordination Group.

P&B Output Code	Livelihoods and basic needs Outcome 1: Communities, especially in disaster and crisis affected areas, restore and restart their livelihoods	<i>70% of those assisted for whom food consumption is equal or greater than the minimum food basket equivalent</i>
	Livelihoods and basic needs output 1.5: Households are provided with multipurpose cash grants to address their basic needs.	<i>1,000 families reached with food assistance or unconditional cash grant to cover minimum survival commodities</i>

	Activities planned	Weeks	1	2	3	4	5	6	7	8	9	10	11	12	13	14	15	16	17	18
AP007	Consultative meeting with community and local stakeholders		X	X	X	X	X	X	X	X	X	X	X	X						
AP008	Distribute RTEF to affected households		X	X	X															
AP007	Conduct rapid market assessment including financial service providers			X	X															
AP010	Inter-sector coordination and orientation to adopt CVA tools in different sectors wherever possible depending on local context.				X	X	X	X	X	X	X	X								
AP009	Provide unconditional multipurpose cash transfer/cash for work support to the most disaster affected vulnerable families to meet their survival threshold			X	X	X	X	X	X	X	X	X	X	X						



Health

People targeted: 25,000

Male: 12,000

Female: 13,000

Requirements (CHF): 39,432

Needs analysis: There is a need to conduct health promotion activities related with the prevention of health hazards (diarrhoea, cholera, seasonal flu, dengue, malaria and snake bites). This is also in a context of COVID-19 transmission where some of the affected districts are also hotspots in terms of number of active cases. In addition, special attention to ensure staff and volunteer safety and security is required. Finally, the operation will include PSS activities targeting affected populations.

Risk analysis: In some areas, the health facilities are congested due to COVID-19 cases, while the health workers also suffer from strong stigmatization. In addition, some community members might be reluctant to participate in awareness activities or PSS sessions for fear of being infected by the virus.

Population to be assisted: For the relief phase, health sector will reach a total of 25,000 people with health promotional activities, community-based health activities (including PSS) in close coordination with local health service centres.

Programme standards / benchmarks: Health cluster guidelines and relevant regulations from the Ministry of Health and Population.

P&B Output Code	Health Outcome AOF4.1: The immediate risks to the health of affected populations are reduced	<ul style="list-style-type: none"> 20% of the affected population received immediate health services by mobilizing trained volunteers 25,000 people reached by health intervention 																	
	Health Output 1.2: Target population is provided with rapid medical management of injuries and diseases	300 people reached by first aid services																	
	Activities planned	Weeks	1	2	3	4	5	6	7	8	9	10	11	12	13	14	15	16	17



Water, sanitation and hygiene

People targeted: 10,000

Male: 4,900

Female: 5,100

Requirements (CHF): 67,319

Needs analysis: The floods contaminated water sources. The displaced and affected population lack sufficient sanitation facilities. Poor hygiene behavior has been observed among the displaced population. With the contaminated water, insufficient sanitation facilities and poor hygiene, flood affected people are exposed to high risk of water-borne and water related diseases. In this flood, due to COVID-19 risk situation, response works need to be in line with COVID-19 preparedness and response integrating the risk communication interventions.

Risk analysis: As per the risks identified in the shelter sector, there will be challenges in maintaining minimum standards in camp settings. In addition, recurrent floods and landslides will slow down the rehabilitation efforts for water points (including because of access limitations).

Population to be assisted: The most vulnerable flood and COVID-19 affected population will be targeted for WASH intervention. Single women-headed families, ultra-poor families, socially marginalized people, people with special needs and COVID-19 affected people will be given priority to meet their WASH needs.

Programme standards/benchmarks: Sphere, Nepal COVID-19 guidelines and WHO guidelines.

P&B Output Code	WASH Outcome1: Immediate reduction in risk of waterborne and water related diseases in targeted communities	20% of targeted families provided with WASH supplies and services through NRCS distribution points (meets Sphere and WHO standards)																
	WASH Output 1.1: Continuous assessment of water, sanitation, and hygiene situation is carried out in targeted communities	2 assessments/monitoring visits undertaken and shared in the targeted communities																
	Activities planned	Week	1	2	3	4	5	6	7	8	9	10	11	12	13	14	15	16
AP026	Conduct initial assessment of the water, sanitation and hygiene situation in targeted communities		X	X	X													
AP026	Monitoring of the water, sanitation and hygiene situation in targeted communities		X	X	X	X	X	X	X	X	X	X	X	X				
P&B Output Code	WASH Output 1.2: Daily access to safe water which meets Sphere and WHO standards in terms of quantity and quality is provided to target population	1,150 people provided with safe water																
	Activities planned	Week	1	2	3	4	5	6	7	8	9	10	11	12	13	14	15	16
AP026	Clean and disinfect 46 contaminated tube wells/water sources		X	X	X	X	X	X	X	X	X	X	X	X				
AP026	Monitor use of water through household surveys and household water quality tests		X	X	X	X	X	X	X	X	X	X	X	X				



Protection, Gender and Inclusion

People targeted: 5,000

Male: 2,400

Female: 2,600

Requirements (CHF): 52,847

Needs analysis: Flood, inundation and land slide affected thousands of people. However, the effects of disaster vary with different vulnerable groups: women and girls, men and boys, children, senior citizens, people with disability, sexual minorities groups, are differently affected due to their vulnerabilities. Protection needs remain high to women and girls, children, people with disabilities and sexual minorities. Addressing the need to mitigate and respond to sexual and gender-based violence will be priority. Supporting the most vulnerable like people with disability, marginalized and excluded community with low family income, displaced households, women-headed households with their basic need for health, shelter and livelihood will be prioritized. Provision of services of restoring family link and family re-unification will be continuously required. The most significant need realized are lack of dignity kit, adolescent girl kit, baby kit, prevention from gender and sexual-based violence.

Risk analysis: Monsoon in between COVID-19 pandemic can be considered as complex emergency. The risk of contracting COVID-19 for NRCS staff and volunteers will remain high.

Population to be assisted: The protection cluster will provide assistance to most vulnerable people including children, women, people with disability, senior citizens, pregnant and lactating mothers, single women, unaccompanied and separated children and people with chronic diseases. The beneficiaries will be selected from flood and landslide affected districts.

Programme standards/benchmarks: Red Cross Red Crescent Movement's Minimum Standard on PGI and Nepal National Protection Cluster Strategy.

P&B Output Code	Protection, Gender & Inclusion Outcome 1: Communities become more peaceful, safe and inclusive through meeting the needs and rights of the most vulnerable.	70% of the targeted population with increased knowledge and awareness about gender-based violence																
	Protection, Gender & Inclusion Output 1.1: Programmes and operations ensure safe and equitable provision of basic services, considering different needs based on gender and other diversity factors.	<ul style="list-style-type: none"> 100 NRCS staff and volunteers are trained on Minimum Standards of PGI in emergencies 28 district chapters are able to collect SADD data 																
	Activities planned	Week	1	2	3	4	5	6	7	8	9	10	11	12	13	14	15	16
AP031	Support sectoral teams (shelter, WASH, health, livelihoods) to include measures to address vulnerabilities specific to gender and diversity factors (including people with disabilities) in their planning and gender responsive budgeting		X	X	X	X												
AP031	Hold basic half day online training with NS staff and volunteers on the Minimum Standards (or integrate a session on Minimum Standards in standard/sectorial trainings).		X	X	X	X	X	X	X	X	X	X	X	X				

AP031	Support sectoral teams to ensure collection and analysis of sex, age and disability-disaggregated data (see guidance in Minimum Standards)	X	X	X	X	X	X	X	X	X	X	X	X						
P&B Output Code	Protection, Gender & Inclusion Output 1.2: Programmes and operations prevent and respond to sexual- and gender-based violence and other forms of violence especially against children.	<ul style="list-style-type: none"> 100 NRCS staff and volunteers are trained in SGBV and child protection 5,000 people reached with SGBV and child protection messages in affected communities 50 families supported with RFL services 750 dignity kits/adolescent kits distributed 																	
	Activities planned	Week	1	2	3	4	5	6	7	8	9	10	11	12	13	14	15	16	
AP033	Use Minimum Standards as a guide to support sectoral teams to include child protection and measures to mitigate the risk of SGBV	X	X	X	X	X	X	X	X	X	X	X	X						
AP033	Disseminate messages on preventing and responding to SGBV in all community outreach activities	X	X	X	X	X	X	X	X	X	X	X	X						
AP033	Hold basic half day online training with NS staff and volunteers on addressing SGBV (or integrate a session on addressing SGBV in standard/sectorial trainings)					X	X	X	X	X	X	X	X						
AP033	Ensure NS staff and volunteers have signed the Code of Conduct (Anti-harassment and child protection) and have received a briefing in this regard	X	X	X	X	X	X	X	X	X	X	X	X						
AP033	Map and make accessible information on local referral systems for any child protection concerns					X	X	X	X	X	X	X	X						
AP033	Provide support to unaccompanied and vulnerable children with referral system, GBV survivors with safe referrals and PSS, and basic support to most vulnerable groups	X	X	X	X	X	X	X	X	X	X	X	X						
AP033	Ensure that referral systems are in place to provide psychosocial support to children, in collaboration with PSS specialists					X	X	X	X	X	X	X	X						
AP033	Restoring family link, re-unification services, and dead body management	X	X	X	X	X	X	X	X	X	X	X	X						
AP033	Advocate/support for establishment of child, gender and differently-abled-friendly spaces in evacuation centres and temporary shelters	X	X	X	X	X	X	X	X	X	X	X	X						
AP033	Engage with and strengthen the local/community groups like mother's group, child club, youth club, users' committee to aware on SGBV and child protection	X	X	X	X	X	X	X	X	X	X	X	X						
AP033	Procure, preposition and distribute dignity, adolescent and baby kits to affected households	X	X	X	X	X	X	X	X	X	X	X	X						

Strategies for Implementation

Requirements (CHF): 62,375

Needs analysis: The PMER-IM division will ensure that all the targeted district chapters are using standardized PMER-IM methods and tools to ensure a harmonized way of planning, data management and subsequent reporting. Regular monitoring will be done against monitoring checklist to ensure timely delivery of the services. A mechanism is already in place to gather feedback from targeted communities on the support they are receiving from NRCS. This will also be improved to ensure more people have an opportunity to be better assisted based on their feedback this will be coordinated by the community engagement team. The Dignity, Access, Participation and Safety (DAPS) framework will be a guiding document to provide dignified assistance to the affected population. The framework will be strictly followed while implementing all the sectoral activities. Reporting mechanisms will be widely shared with the communities and effectively used. PGI will ensure inclusion in the programme implementation focusing on most vulnerable communities like senior citizen, children, pregnant and lactating mothers, people with disability and sexual minority.

Targeted population: Most vulnerable and marginalized group of population will be considered with high priority to reach with emergency operation.

P&B Output Code	S1.1: National Society capacity building and organizational development objectives are facilitated to ensure that National Societies have the necessary legal, ethical and financial foundations, systems and structures, competences and capacities to plan and perform	28 NRCS district chapters are well functioning																
	Output S1.1.4: National Societies have effective and motivated volunteers who are protected	<ul style="list-style-type: none"> 600 NS volunteers mobilized in relief and response activities 600 trained volunteers insured 																
	Activities planned	Week	1	2	3	4	5	6	7	8	9	10	11	12	13	14	15	16
AP040	Mobilize volunteers and conduct more detailed assessment of common sectors in selected communities		X	X	X	X												
AP040	Insured and mobilize volunteers and DDRT/NDRTs for the assessment and implementation of activities		X	X	X	X	X	X	X	X	X	X	X	X	X	X	X	X
AP040	Orientation to volunteers on COVID-19 safe practices		X	X														
P&B Output Code	Output S1.1.6: National Societies have the necessary corporate infrastructure and systems in place	25 information bulletin/updates and infographs developed and shared with concerned stakeholders																
	Activities planned	Week	1	2	3	4	5	6	7	8	9	10	11	12	13	14	15	16
AP058	Support sectors to prepare detail plans based on assessment and analysis					X	X	X	X									
AP058	Prepare reports, infographics, and updates of emergency operation for different level of stakeholders				X					X			X					
AP055	Support sectors to monitor emergency operation by providing monitoring checklists/tools		X	X	X	X	X	X	X	X	X	X	X					
AP058	Conduct reporting training to district team (via NRCS learning platform)				X	X												
AP055	Conduct post-distribution monitoring									X	X	X	X	X				

AP055	Monitoring by joint teams of NRCS headquarters and IFRC/PNS											X	X						
AP055	Conduct DREF review/lessons learnt workshop												X						
P&B Output Code	Output S1.1.7: NS capacity to support community-based disaster risk reduction, response and preparedness is strengthened	<i>28 people trained/oriented on IRA tools</i>																	
	Activities planned	Week	1	2	3	4	5	6	7	8	9	10	11	12	13	14	15	16	
AP002	Train volunteers on IRA		X	X	X	X													
AP002	Strengthen community early warning and early communication system			X	X	X	X	X	X	X	X	X	X	X					
AP002	Deploy task response team at district level for immediate and effective response				X	X	X	X	X	X	X	X	X	X					
AP002	Organize/facilitate DDMC/LDMC meeting				X	X	X	X	X	X	X	X	X	X					
P&B Output Code	Output S2.1.3: NS compliance with Principles and Rules for Humanitarian Assistance is improved	<ul style="list-style-type: none"> 28 flood and landslide related PSA/radio programme aired in flood affected districts within relief phase 28 district chapters have feedback mechanism in place 																	
	Activities planned	Week	1	2	3	4	5	6	7	8	9	10	11	12	13	14	15	16	
AP084	Continue to assess communications modalities including exploring opportunities for use of technology		X	X	X														
AP084	Set up multi-sectoral feedback mechanism channels including information and feedback booths as a critical point where people can get life-saving and other information on activities		X	X	X	X	X	X	X	X									
AP084	Support sectors to develop, translate into local languages and disseminate key messages in the communities		X	X	X														
AP084	Arrange radio programmes on different sectorial activities and based on community feedback					X				X				X					
P&B Output Code	Output S2.1.4: Supply chain and fleet services meet recognized quality and accountability standards	<ul style="list-style-type: none"> 28 temporary distribution centres established 15 cluster meeting attended that will maintain the timely supplies in the affected areas 																	
	Activities planned	Week	1	2	3	4	5	6	7	8	9	10	11	12	13	14	15	16	
AP050	Warehousing, goods reception, forwarding, fleet, fuel costs, not related to a specific area of focus		X	X	X	X	X	X	X	X	X	X	X	X					
AP052	Regular monitoring the transport access to mobilize the relief support		X	X	X	X	X	X	X	X	X	X	X	X					
AP052	Cluster coordination to maintain timely supplies in affected areas		X	X	X	X	X	X	X	X	X	X	X	X					
AP050	IFRC APRO coordination for maintaining the supply chain on unavailability or less local market capacity.		X	X	X	X	X	X	X	X	X	X	X	X					
AP052	Maintain warehouses' stock		X	X	X	X	X	X	X	X	X	X	X	X					
AP052	Establish the provisional logistics hub and the distribution centres		X	X	X	X	X	X	X	X	X	X	X	X					

Funding Requirements

International Federation of Red Cross and Red Crescent Societies

*all amounts in
Swiss Francs
(CHF)*

DREF OPERATION

MDRNP010 Nepal Monsoon Floods and Landslides

03/8/2020

Budget by Resource

Budget Group	Budget
Shelter - Relief	212,353
Construction - Facilities	6,303
Clothing & Textiles	5,042
Water, Sanitation & Hygiene	55,336
Medical & First Aid	5,882
Teaching Materials	9,244
Utensils & Tools	6,723
Cash Disbursement	29,412
Relief items, Construction, Supplies	330,294
Distribution & Monitoring	13,025
Logistics, Transport & Storage	13,025
National Society Staff	8,924
Volunteers	10,840
Personnel	19,765
Workshops & Training	57,403
Workshops & Training	57,403
Information & Public Relations	5,882
Office Costs	40,606
Communications	819
General Expenditure	47,307
DIRECT COSTS	467,795
INDIRECT COSTS	30,407
TOTAL BUDGET	498,201

Reference documents



Click here for:

- [Information bulletin no. 1](#)
- [Information bulletin no. 2](#)

For further information, specifically related to this operation please contact:

In Nepal red Cross Society

- Umesh Dhakal, Executive Director; phone: +977 98510 56369; email: umesh@nrcc.org
- Mona Aryal, Director DM Department; mobile: +977 98511 46777; email: mona.aryal@nrcc.org

In IFRC Country Office Nepal

- Herve Gazeau, acting Head of Country Office; email: herve.gazeau@ifrc.org
- Prajwal Acharya, DRM Programme Manager; email: prajwal.acharya@ifrc.org

In IFRC Asia Pacific Regional Office, Kuala Lumpur

- Alka Kapoorsharma, acting deputy regional director; email: alka.kapoorsharma@ifrc.org
- Necephor Mghendi, head of disaster and crises unit; email: necephor.mghendi@ifrc.org
- Pascal Bourcher, operations coordinator; email: opscoord.southasia@ifrc.org
- Siokkun Jang, regional logistics manager; email: siokkun.jang@ifrc.org
- Antony Balmain, communications manager; email: antony.balmain@ifrc.org

In IFRC Geneva

- Nelson Castano, operations coordination manager; email: nelson.castano@ifrc.org

For IFRC Resource Mobilization and Pledges:

- Alice Ho, partnership in emergencies coordinator; email: partnershipsea.ap@ifrc.org

For Performance and Accountability support (planning, monitoring, evaluation and reporting enquiries)

- Liew Siew Hui, PMER manager; email: siewhui.liew@ifrc.org

How we work

All IFRC assistance seeks to adhere to the [Code of Conduct](#) for the International Red Cross and Red Crescent Movement and Non-Governmental Organizations (NGO's) in Disaster Relief and the [Humanitarian Charter and Minimum Standards in Humanitarian Response \(Sphere\)](#) in delivering assistance to the most vulnerable. The IFRC's vision is to inspire, **encourage, facilitate and promote at all times all forms of humanitarian activities** by National Societies, with a view to **preventing and alleviating human suffering**, and thereby contributing to the maintenance and promotion of human dignity and peace in the world.

The IFRC's work is guided by Strategy 2020 which puts forward three strategic aims:



Save lives,
protect livelihoods,
and strengthen recovery
from disaster and crises.



Enable **healthy**
and **safe** living.

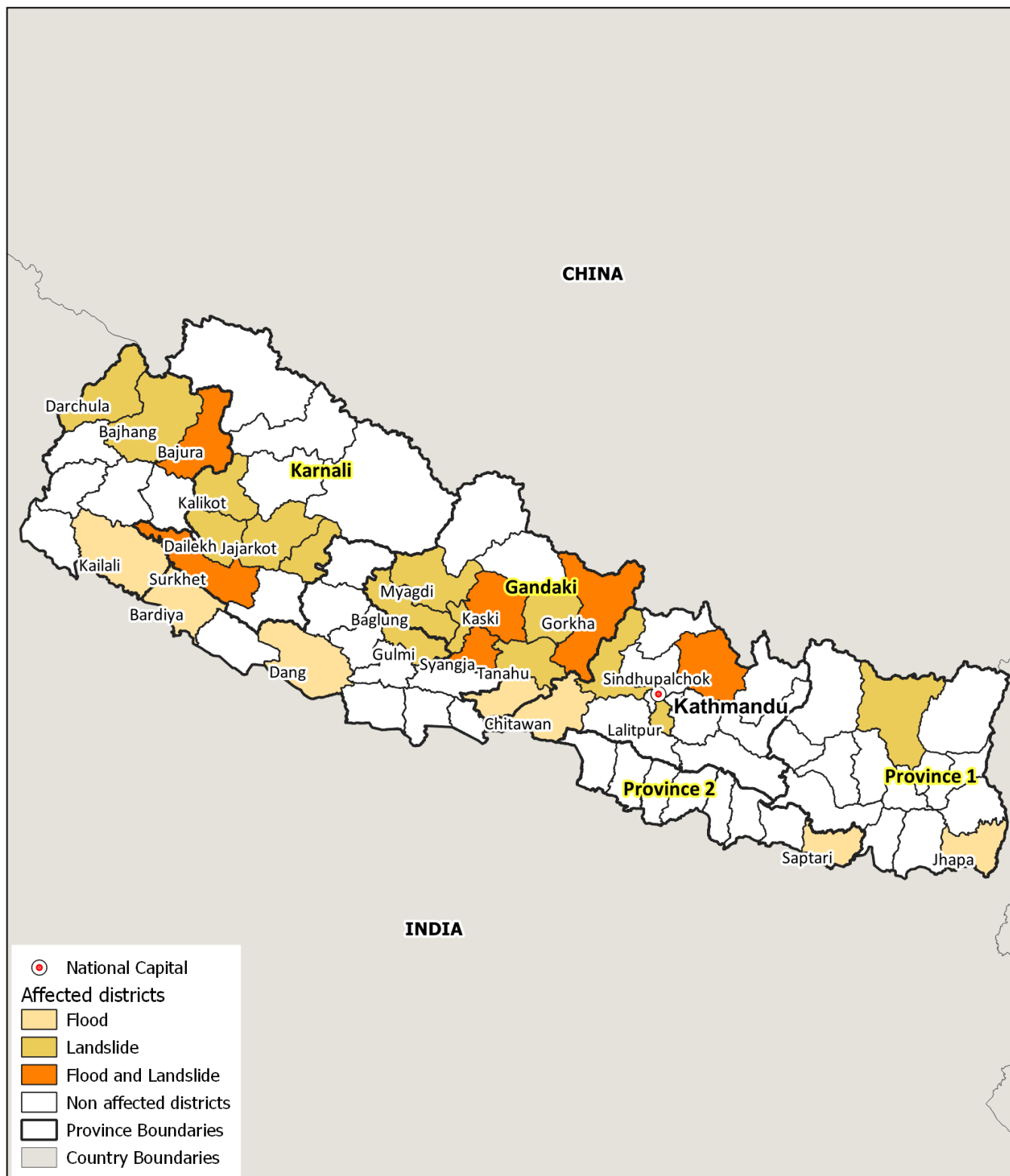
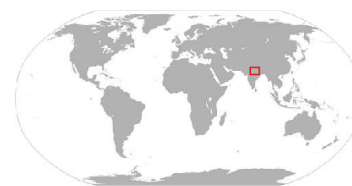


Promote **social inclusion**
and a culture of
non-violence and **peace**.



Nepal: Monsoon Floods and Landslides Emergency Plan of Action (EPoA)

1 August 2020



The maps used do not imply the expression of any opinion on the part of the International Federation of the Red Cross and Red Crescent Societies or National Societies concerning the legal status of territory or its authorities. Map data sources: OCHA, OSM Contributors, ICRC, IFRC

