


www.ifrc.org
Saving lives,
changing minds.

Emergency Plan of Action (EPoA)

Kenya: Imminent Dam Spillage

 International Federation
of Red Cross and Red Crescent Societies

DREF Operation	MDRKE046	Glide n°:	N/A
DREF; Date of issue:	30 October 2020	Expected timeframe:	2 months
Operation start date:	29 October 2020	Expected end date:	31 December 2020
Category allocated to the of the disaster or crisis: Yellow			
DREF allocated: CHF 148,019			
Total number of people at risk:	300,000 people (60,000HHs)	Number of people to be assisted:	150,000 people (30,000HHs)
Counties predicted to be affected:	Two (West Pokot and Turkana)	Counties targeted:	Two (Turkana and West Pokot)
Host National Society presence (n° of volunteers, staff, branches): Two Kenyan Red Cross Society (KRCS) County branches (Turkana and West Pokot counties), 20 staff, 60 volunteers are currently engaged in supporting the preparedness actions for this anticipated emergency. Teams from the North Rift Region and KRCS National Headquarters are also involved in the operation. The National Society has a contingency plan in place to draw personnel from other neighbouring regions if the situation goes to response mode.			
Red Cross Red Crescent Movement partners actively involved in the operation: International Federation of Red Cross and Red Crescent Societies, and Danish Red Cross.			
Other partner organizations actively involved in the operation: A multi-agency team has been set up to lead preparedness and coordination activities for possible spillages. Stakeholders involved include; Kerio Valley Development Authority (KVDA), Water Resources Authority (WRA), the Kenya Electricity Generating Company Limited (KenGen), the county governments of West Pokot and Turkana, National government agencies including the National Drought Management Authority, National Environmental Management Authority and the Ministry of Interior and National Government Coordination.			

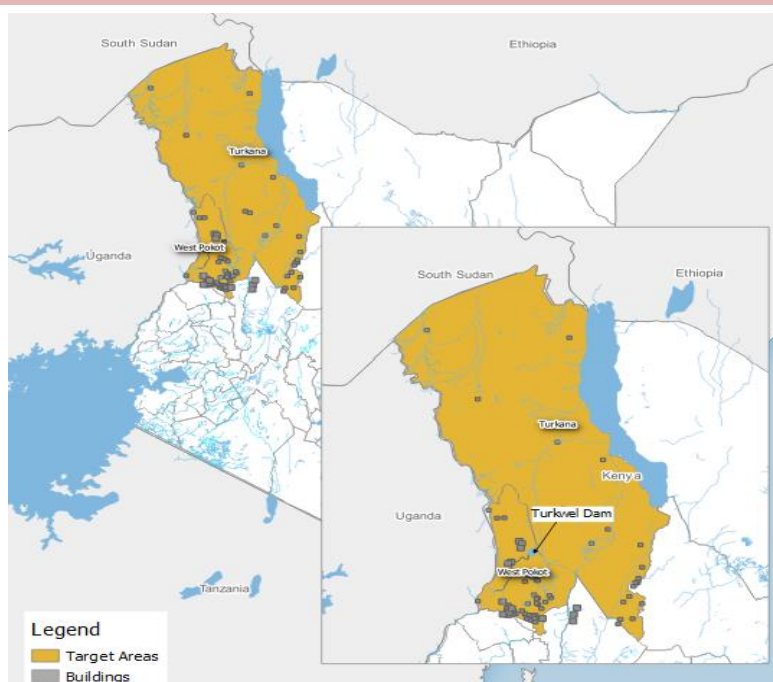
<Please click [here](#) for the financial report and [here](#) for the contacts>

A. Situation analysis

Description of the disaster

Turkwel Dam is an arch dam located along the Turkwel river gorge, about 76 Km North of Kapenguria town in West Pokot county. The dam was designed to serve several purposes including hydroelectric power production, irrigation, tourism and fishing. It was constructed between 1986 and 1991 (35 years ago). In addition to being the third largest dam in Kenya, it also supports the third largest hydroelectric power plant in the country, having an installed electric capacity of 106 megawatts. The dam, Kenya's tallest, has a height of 153 meters (502 ft.), crest length of 150M, dam volume of 1,644.95 Million cubic meters and retains a water volume of 1,641 million cubic meters. Turkwel dam outflows are also a major contributor to Lake Turkana waters.

Historically, the dam has never filled to its full capacity since completion in 1991. Over the past 2 months, the water levels in the dam have risen to critical levels following consecutive seasons of



Map of Kenya, highlighting Turkwel Dam, at-risk areas and closest settlements
©IFRC

heavy rainfall in the dam catchment areas in Mt. Elgon and West Pokot counties. As of 22nd October 2020 at 6pm , water levels in the dam had risen to 1,148.25 meters against a maximum height of 1,150 meters, leaving only 1.75 meters to spillage.

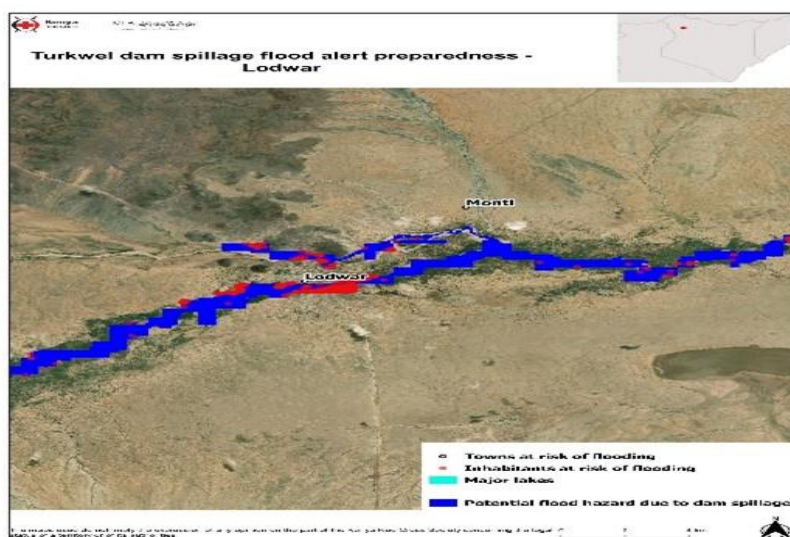
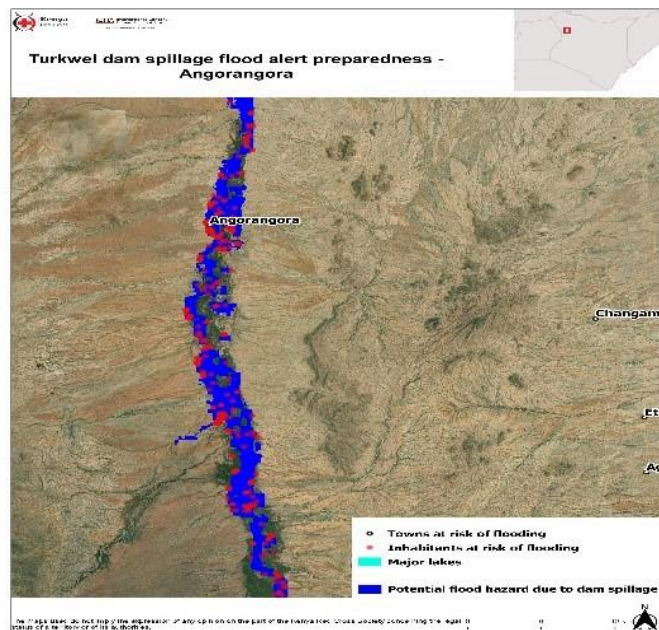
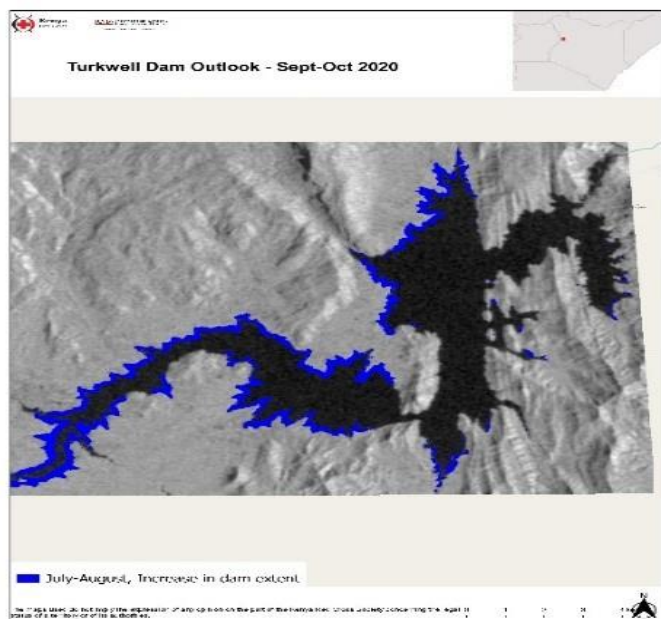
Since the beginning of October 2020, inflows into the dam averaged 56.69m³/s compared to long term average of 17M³/s for the month of October in previous years. This represents a 325% increase to its long-term average according to Kenya Electricity Generating Company (KenGen). This coupled with a forecast of normal to above normal rainfall from the Kenya Meteorological Department (KMD) for October-November-December 2020 (OND 2020) season, indicates a possibility of sustained large volumes of water inflows into the dam. With current volumes of inflows, it is projected that the dam will reach its maximum levels towards end of October and early November 2020, potentially resulting in the displacement of over 60,000 households living along the River Turkwel belt. Additionally, the river sources are currently reporting heavy rainfalls since the past weekend making the spillage more likely at an earlier date than early November.

Areas likely to be affected include.

- **Turkana County:** Kaputir, Katilu, Turkwel, Kalemngorok, Nakwamoru, Kapelibok, Nawoyapua, Kalemunyang, Lodwar town and Kalokol.
- **West Pokot County:** Riting, Emong, Reres, Chepokachem, Kudungu'le and Lodomong'itil, Itan, Sirwach, Morkoryo, Kang'ulitian and Sukut Villages.

There are also other villages around Lake Turkana that will be affected secondarily due to the overflows and subsequent increase of the lake. These villages include those in Marsabit county (Loiyangalani) and others within Turkana County.

Satellite imagery mapping of the areas to be affected and households at risk.



Based on above information, KRCS is requesting IFRC support through the DREF to enable preparedness actions to protect communities at risk and to mitigate the impact of the imminent dam spillages.

This plan is linked to the KRCS national contingency plan and the County governments of West Pokot and Turkana draft contingency plans, in addition to the plans of action from Kerio Valley Development Authority (KVDA) and Kenya Electricity Generating Company Limited (KenGen) advisories.

Summary of the current Preparedness

Overview of Host National Society Current Preparedness and Actions

KRCS has deployed multi-sectoral teams which are currently undertaking mapping of areas at risk from the floods. KRCS drones and existing agreement with Airbus for use of satellites have been supporting the mapping through high resolution maps that inform current estimates of potential risks to households and infrastructure. The teams have also mobilised communities to identify evacuation routes and safe areas.

The Society is part of weekly multi-agency coordination platforms led by the national government authorities in both West Pokot and Turkana counties. The coordination meetings have also been able to verify the identified needs, resource requirements and stakeholder mapping for both preparedness and response.

So far, KRCS has and continues to disseminate early warning messages to communities through multiple channels including local media stations, local government structures like chiefs and also social media channels. The messages are aimed at increasing awareness among community members on the impending emergency while also identifying actions to take to minimize the risk on lives and property.

KRCS has moved 1,000 kits of household items (HHIs) including (2) Tarpaulins, one (1) kitchen set, two (2) blankets, two (2) jerricans and two (2) bar soaps from its headquarter offices for prepositioning as part of the preparedness for communities at risk of flooding. However, the Society does not have sufficient WASH HHIs for prepositioning and plans to procure these items through this preparedness DREF through its emergency supplies framework for emergency procurement. In addition, the Society has initiated refresher courses for its frontline response teams for the various skills including first aid, assessment among others.

On 21 October 2020, KRCS organized a partners' meeting to update on the developing situation, potential needs and resource gaps. The meeting was attended by representatives from the IFRC, ICRC, WFP, UNICEF, UN-OCHA and Partner National Societies including Danish RC, Finnish RC, Italian RC and British RC. Another partnership was held on 27 October 2020.

Overview of Red Cross Red Crescent Movement Actions in Kenya

The International Federation of Red Cross and Red Crescent Societies (IFRC) has an in-country presence through its Africa Regional Office and the Eastern Africa Country Cluster Support Team (CCST), which are based in capital city of Nairobi. The IFRC Eastern Africa CCST provides operational support to 8 National Societies including KRCS. Following discussions with the IFRC, it was agreed that through the Disaster Relief Emergency Fund (DREF), KRCS would be supported through a preparedness actions for the impending floods emergency. The operation would then be updated after the dam spills to incorporate response actions.

KRCS also hosts several Partner National Societies (PNS) as mentioned above and has been issuing updates to them on the unfolding situation in the country. This was achieved through the first partners meeting held on 21 October 2020 and others planned regularly as the situation changes.

The International Committee of the Red Cross (ICRC) has a regional delegation is also hosted in Nairobi, which serves as a hub for operations in eastern and central African countries.

The International Committee of the Red Cross (ICRC) has a regional delegation is also hosted in Nairobi, which serves as a hub for operations in eastern and central African countries.

As of the second partners meeting on 27 October, Danish Red Cross had expressed interest to support some preparedness activities. No additional commitments have been made by other partners.

Overview of other actors' actions in country

The United Nations has strong presence in Nairobi for country and regional programmes. KRCS is currently working with UNFPA in the current Kenya floods appeal response and is also scheduled to undertake a fact-finding mission in

the first week of November 2020 in relation the Turkwel dam spillage. UNICEF is additionally supporting flood-related epidemic programme in 4 counties of Kenya with endemic cases of water-related diarrhoeal illnesses.

The Kenya Electricity Generating Company Limited (KenGen) and the Kerio Valley Development Authority (KVDA) have been leading the weekly multi-stakeholder coordination meetings to prepare for possible flooding emergency. The multi-stakeholder team has carried out preliminary assessments as well in areas at risk with at least 60,000 households identified as potentially at-risk. KenGen has continued to issue advisories on the situation of the dam. In addition, county governments of West Pokot and Turkana have in place draft contingency plans which have largely informed the ongoing assessment and planning of the KRCS. The counties of West Pokot and Turkana have also been leading community awareness sessions as well.

WHO	WHAT	WHERE
IFRC	Preparedness actions through DREF operation	In all at-risk areas, targeting 30,000 households
County Government of Turkana and West Pokot	County contingency Plans	In the two counties
KenGen & KVDA	Monitoring and regular updates on dam water levels and has also been leading coordination meetings	National level and in the two counties
SAFARICOM	As part of its corporate social responsibility, supporting dissemination of early warning messages from KRCS through Trilogy Emergency Relief Application (TERA) SMS platform	In at risk areas

Needs analysis, targeting, scenario planning and risk assessment

Needs analysis

A total of **60,000 households (300,000 people)** are likely to be impacted by possible flooding resulting from dam spillages. Areas likely to be affected include:

- **Turkana county:** Kaputir, Katilu, Turkwel, Kalemngorok, Nakwamoru, Kapelibok, Nawoyapua, Kalemunyang, Lodwar town and Kalokol (10 villages)
- **West Pokot county:** Riting, Emong, Reres, Chepokachem, Kudungu'le and Lodomong'itil, Itan, Sirwach, Morkoryo, Kang'ulitian and Sukut (11 villages)

Anticipated impacts include destruction / damage to shelter and sanitation facilities, contamination of communal water points, destruction of infrastructure and disruption of livelihoods. Many institutions will also be affected – schools, health facilities, water pipelines and markets/shops. This will further impact communities already affected by the recent March-April-May 2020 floods in Kenya.

Displaced communities will also face an elevated risk of disease outbreaks including acute diarrheal diseases, malaria, Rift Valley Fever and water borne diseases. The entire population of 300,000 people (approximately **147,000 men and 153,000 women**) are at increased risk of subsequent epidemics.

In preparedness for this highly likely event, KRCS will roll out preparedness actions including:

- Developing and disseminating early warning messages to community members
- Information sharing with at-risk communities on the imminent disaster, available first aid posts, emergency numbers, etc
- Working with the community and other stakeholders to identify and ensure readiness of evacuation sites KRCS is for the moment advocating from County Government to allocate sites.
- Support evacuation of families closest to the dam, facing the risk of flooding
- Prepare KRCS volunteers and the community committees to conduct search and rescue (including First Aid)
- Preposition water treatment chemicals in preparedness for water contamination or disruption of drinking water supply

Targeting

Through this DREF preparedness operation, KRCS aims to support 30,000 households with preparedness and Disaster Risk Reduction interventions focused on development and dissemination of early warning messages, mapping of possible areas to be affected and potential areas for evacuation of communities at risk, assessing key amenities to be affected (schools, health facilities etc), prepositioning of shelter and Household items, social mobilization through IEC and public *barazas* (townhall meetings), undertaking cash feasibility studies in readiness for roll-out of cash

interventions to support affected families evacuate to higher areas after the floods, and prepositioning of water, sanitation and hygiene items.

In the event of transition to response, KRCS will undertake geographical targeting where communities living in affected areas will be targeted. Within the targeted geographical areas, KRCS will prioritize the most vulnerable including the elderly, people living with disability, female headed households, households with pregnant women, and households with children under 5 years old among others.

Estimated disaggregated data for population targeted

Disaggregated data will be collected during the rapid needs assessments following the spillage.

Scenario planning

Scenario	Humanitarian consequence	Potential Response
Scenario 1: Turkwel dam doesn't fill and therefore no spillage	No humanitarian impacts	Response will be limited to the preparedness actions as outlined and planned in this EPoA.
Scenario 2: Turkwel dam fills up and spills leading to minimal or no flooding.	<ul style="list-style-type: none"> Minimal displacement within the capacity of the community and local actors to respond to Less than 500 households are displaced in the affected areas 	KRCS will review this response strategy to cover for the families displaced. This will include review of the targeting criteria in view of reported effects. KRCS will continue monitoring the situation and stand ready to scale-up.
Scenario 3: Turkwel dam spills and causes flooding resulting to displacement of population, marooning of villages, submerging of farms, destruction of infrastructure potentially affecting at least 30,000 households.	<ul style="list-style-type: none"> Over 1,000 families displaced. Loss of livelihoods and property 	KRCS will update the current Plan of Action to factor in the increased needs and enhance its targeting criteria and collaboration with other partners. In addition, a request to scale up the response will be made to meet the increased humanitarian needs.

Operation Risk Assessment

- Intercommunal conflicts:** The Turkwel dam is situated on the border areas of the West Pokot and Turkana counties. These areas are often affected by conflict between communities living in this area. This may pose a safety and security risk to KRCS staff and volunteers as they operate in the affected area. KRCS will ensure engagement of local staff and volunteers as applicable and continue with security surveillance, using opportunities provided by existing public goodwill and its acceptability approach to ensure successful implantation of the proposed activities. Security briefings will be continuously provided to the staff and volunteers to ensure continued vigilance.
- Inaccessibility of communities:** In case of flooding, the targeted areas may become inaccessible due to damage to infrastructure by the floods. To mitigate the access challenges KRCS will engage the government of Kenya through the ministry of interior to explore possibilities of getting air support to move teams and relief items to the communities in areas that are unreachable by road. It is important to note that perception issues may arise due to this possible collaboration with Government, taking into consideration that the area is prone to intercommunal conflicts and government strong interventions. KRCS are aware of this risk and will ensure to collaborate with both Government security agencies but also local community to ensure current acceptance of KRCS on the ground is maintained.
- COVID-19 Pandemic:** This DREF operation and its operational strategy considers the risks related to the current COVID-19 pandemic and is aligned with the IFRC global emergency appeal that supports National Societies to deliver assistance and support to communities affected or at risk of being affected by the COVID-19 pandemic. As of 27 October 2020, a total 47,843 cases of COVID-19 have been registered in country, with 33,421 recoveries and 884 deaths, according to the [Ministry of Health](#).

National Society's responses to COVID-19 are supported through the IFRC [global appeal](#), which is facilitating and supporting them to maintain critical service provision, while adapting to COVID-19. This DREF operation is aligned with and will contribute to the current global strategy and [regional Emergency Plan of Action](#) for COVID-19 developed by the IFRC Africa Regional Office, in coordination with global and regional partners. This means that the National Society (NS) will ensure, even as it prepares and eventually responds to the floods resulting from the likely dam spillage, COVID-19 prevention measures are adhered to in line with regional plan of action and its national COVID-

19 country plan. IFRC continues to assess how emergency operations in response to disasters and crisis should adapt to this crisis and provide necessary guidance to its membership on the same. The NS will keep monitoring the situation closely and revise the plan accordingly if needed, taking into consideration the evolving COVID-19 situation and the operational risks that might develop, including operational challenges related to access to the affected population, availability of relief items, procurement issues, and movement of NS volunteers and staff as well as international staff. For more information, please consult the [COVID-19 operation page](#) on the IFRC Go platform.

Below table indicates potential impact of the pandemic on this DREF operation and how KRCS will respond to the situation if COVID-19 mitigation measures are made more stringent in Kenya.

COVID-19 measures	Standard epidemic control measures	Temporary lockdown of society (schools, shops, public functions)	Sustained possibility of reinstatement of lockdown and restriction of movement during implementation period
Likelihood	High	High	Low
Impact on operation	No impact on the operation. KRCS will ensure to adhere to the epidemic control measures in place.	The impact will be relatively low on this operation, as the Red Cross is a partner of choice in the response to disasters across the country. KRCS is thus assured to be able to implement floods response activities even in the event of temporary lockdown.	KRCS is ensured to be able to carry on its activities in case the Government decides to lockdown the country. To note, on 28 th September, the curfew time was adjusted from 4 am to 9pm to 4 am to 11pm, and number of people allowed to attend weddings and funerals increased from 100 to 200. As such, it is unlikely that sustained lockdown will be required in many towns like before, unless there is a drastic increase (from current average of 800 per day) in the number of COVID-19 cases in the country.
Mitigating measures	<p>As the epidemic control measures were already in place before this operation, preparedness and potential response activities are designed to adhere to the measures.</p> <p>Trainings will be conducted in small groups, with due respect to social distancing measures.</p> <p>In the event operation is updated to include a response component, relief support will essentially be provided in cash or voucher to avoid large gatherings of people for distributions.</p> <p>Awareness raising exercises will ensure that social distancing norms are adhered to and will mainly be done with loudspeakers and be mobile to avoid gatherings (distance to be maintained in all cases).</p>	Same as under standard epidemic control measures. In addition, some delays might be experienced with procurements for of finance service providers or vendors in case vouchers are used. If this happens, a timeframe extension may be requested.	Health and hygiene promotion activities will be adjusted in line with any new measures that might come up, while relief through cash and voucher assistance will be provided.

B. Operational strategy

Overall Operational objective:

To prepare KRCS to intervene in the event of the Turkwel dam spillage and mitigate the risk of flood effects targeting 30,000 households at risk in West Pokot and Turkana counties, through dissemination of early warning messages, prepositioning supplies, identification of evacuation sites, support evacuation of people at risk as well as providing first aid upon impact.

The situation will be closely monitored by both the National Society and IFRC and an Operation Update will be issued after the dam starts to spill to inform on the needs and revise the operational strategy to transition from preparedness to response activities. If the situation improves and there is no spillage, the Operation Update will revise the strategy to include an exit strategy for closing the operation.

The Proposed Strategy

Through this DREF, KRCS aims to strengthen its preparedness capacity to support a total of 30,000 households (150,000 people) at risk of flooding. NS will equally ensure to provide necessary first aid and support evacuation of people. Specific actions will include.

1. Disaster Preparedness & Risk Reduction

Early Warning:

- Dissemination of early warning and risk communication messages to communities in high risk areas through the Trilogy Emergency Relief Application (TERA) SMS platform, mass media including local media, as well as social media. The messages will inform communities of the risks they face, the actions they can take, as well as available support in case of flooding.
- Sensitize volunteers and community groups on the COVID-19 Protocols and regulations. This will be done in conjunction with early warning awareness.
- Deploy 30 volunteers for 14 days to support preparedness action in the two counties at risk.
- Support early warning (barazas, public address systems (PAS)), mapping and identification of evacuation routes and centres for communities together with local authorities. This will include 60 volunteers for 10 days.
- Sensitization of target households on safe water storage and safe use of water treatment products in case of distribution.

Evacuations:

- Mapping and identification of relocation sites for KRCS warehouses at Lodwar to high grounds.
- Contingency for evacuation of people during the floods. This will allow NS volunteers to support evacuations to higher grounds and cover for any relating transportation costs for people in first few hours following spillage. It is agreed with NS this will only be done in the event of spill.

Assessments:

- Conduct rapid assessments to establish feasibility of Cash and Voucher Assistance (Pre-Crisis market assessments), including cash for rents. Also engage the contracted service providers of possible cash transfer related to the at-risk areas.
- Assess capacities of existing water facilities and those that maybe affected to enable estimation of needs if the spillage occurs.

Coordination:

- Facilitate coordination and planning meetings together with other stakeholders.
- Facilitate community review meetings on the operation in the two counties of West Pokot and Turkana

Prepositioning of stocks:

- Preposition available HHI kits for 1,000 families in the KRCS warehouse in Lodwar. Items in the kit include two (2) Tarpaulins, one (1) kitchen set, two (2) blankets, two (2) jerricans and two (2) bar soaps. In the event these are distributed, they will be replenished by the DREF.
- Procurement and prepositioning of water treatment chemicals (600,000 Aqua Tabs and 300,000 sachets of PUR). These will be procured through emergency procurement plans under the existing KRCS and supplier framework which is used during emergencies like the one at hand. These items are currently depleted in the emergency stocks available. It is agreed that NS cannot use DREF funds to build contingency stocks, as such, the procurement of the water treatment chemicals will only be done in the event of the spill. The water purification chemicals are available locally and easy to procure.

2. Emergency Health

First aid:

- Review and update of the KRCS health surge team list including PSS teams
- Assess current and projected needs in relation to health facilities and health personnel in the targeted area.
- Procure 10 first aid kits for the at-risk areas (5 per county)
- Conduct FA training for 60 volunteers in both at risk areas (2 locations)
- Preposition two ambulances in West Pokot and Turkana counties (already fully equipped) for 5 days

Search and rescue: In preparedness for search and rescue, conduct training of 20 volunteers (10 per county) for the KRCS Red Cross Action Team (RCAT) on aqua skills. This will allow Ns to have readily available first aid divers to support search and rescue activities after impact.

Psychosocial support (PSS): KRCS has ten (10) trained counsellors to provide PSS who will be ready to deploy.

Protection and Gender Inclusion

KRCS aims to mainstream gender and inclusion into all interventions. Registration documents will specifically include categories for Persons with Disabilities, age and gender in order to ensure these categories are identified and prioritized. Sensitization of SGBV will be incorporated in existing sensitization platforms through health-related interventions. Respective groups will be provided with information on referral pathways for any cases to enhance accessibility to services within the shortest time possible. KRCS will utilize existing capacities for tracing to ensure that children who have been separated from their parents and guardians during displacement are duly reunited.

Community Engagement and Accountability

In this preparedness and Disaster Risk Reduction (DRR) phases, KRCS will engage communities to ensure their buy-in. KRCS will develop a detailed communication strategy which will be validated by the community leaders, and intensify community sensitization activities to ensure communities are well informed through hotlines and community meetings on the operation through the toll free line and community meetings, as well as their entitlement throughout the operation.

Community participation will be critical in ensuring the effectiveness of KRCS preparedness and DRR actions. KRCS will work with communities to ensure identification of safe locations and routes for evacuation. During dissemination of early warning messages, KRCS will also work with community representatives and opinion leaders to ensure a higher number of communities are reached, that they understand the message shared to them and know what actions to take in case of flooding.

KRCS will actively seek feedback through the channels already established including the toll-free line where communities are able to share their feedback or complaints. KRCS will continue to publicize the existence of the toll-free line to ensure as many people as possible are aware of platforms where they can channel their issues.

KRCS will undertake community review meetings in the targeted areas to discuss the ongoing operation with the communities and collect and address any feedback/complaints and use them to adjust programming as necessary.

Operational Support Services

Human resources: This operation will be supported by existing KRCS staff and volunteers. A total of 20 staff and 60 volunteers will be deployed to support in this operation. The staff to be deployed include the Regional Manager for North Rift Region, County Coordinators and officers both at the head office and field level.

Logistics and supply chain: While this DREF envision minimal procurements, any procurement will be done locally, in line with KRCS emergency procurement guidelines. Logistical support will be provided both in primary and secondary transportation as well as warehousing in the field (NS has a warehouse in Lodwar which is the closest town to target areas) that would enable rapid access to beneficiaries in targeted areas. KRCS response teams will also be provided with logistical support to access response areas and the anticipated floods-prone areas. KRCS will ensure a coordinated mobilization, reception, warehousing and dispatch of relief goods to the final distribution points.

Information technologies (IT): KRCS will deploy the use of KoBo tool for detailed assessments. This will be supported through an Information Communication and Technology officer who will assist in uploading of the e-questionnaires on mobile phones which will then be used for data collection. KRCS will also adapt the use of RedRose for distribution of HHIs and during cash and voucher assistance if the response phase is triggered. This will help minimize chances of double targeting and issues of fraud where wrong community members collect items intended for target beneficiaries.

Communications: The Communications Unit at IFRC Africa Regional Office along with East Africa Cluster Communications Officer will provide support to the Kenya Red Cross in building their visibility around this response. This will help position KRCS within the country as a leading humanitarian actor. Kenya Red Cross will also work with national media to provide updates on the response and the needs from communities as well as collect stories of impact

from people who receive much-needed support through the response. It is also a great opportunity to showcase the responders and volunteers on the frontline of the response and their important role in helping communities in the relief and recover period of the disaster.

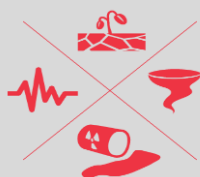
Security: The border areas of West Pokot and Turkana counties have a relatively high risk of security-related incidents. KRCS will ensure engagement of local staff and volunteers as applicable and continue with security surveillance and using opportunities provided by existing public goodwill and its acceptability approach to ensure successful implantation of the proposed activities. The headquarters-based security manager will continue to offer security briefings through mail and visits where necessary throughout the operations. The team leaders in the respective operation areas will continue to liaise with local authority officials and community leaders to ensure the safety of any displaced populations in the various evacuation sites.

West Pokot and Turkana Counties fall under IFRC security phase Orange. To reduce the risk of RCRC personnel falling victim to crime, communal violence or road hazards active risk mitigation measures must be adopted. This includes situation monitoring and implementation of minimum-security standards. Travel of IFRC personnel to orange and red phases should be closely coordinated with the Regional Security Unit. All RCRC personnel actively involved in the operations must have completed the respective IFRC security e-learning courses (i.e. Stay Safe Personal Security, Security Management, or Volunteer Security).

Planning, monitoring, evaluation, & reporting (PMER): The KRCS headquarters (through its monitoring and evaluation and operations teams) will support the implementing teams to ensure effective, timely and efficient delivery of operations. The monitoring process will focus on among others, adherence to minimum standards in humanitarian service delivery, compliance to humanitarian principles guiding the Movement's humanitarian operations, timeliness in delivery of supplies and services to beneficiaries, management of supplies during storage, accuracy, completeness and timeliness of reporting among others. Field monitoring and technical support visits will be conducted where necessary. KRCS will work closely with the IFRC East Africa CCST to strengthen the implementation of the operation.

Administration and Finance: The KRCS has a permanent administrative and financial department, which will ensure the proper use of financial resources in accordance with conditions to be discussed in the Memorandum of Understanding between the NS and the IFRC. The management of financial resources will be according to the procedures of the KRCS and guidelines specific to DREF.

C. Detailed Operational Plan



Disaster Preparedness and Risk Reduction

People targeted: 150,000 People (30,000HH)

Male: 73,500 people

Female: 76,500 people

Requirements (CHF): 104,922

Needs analysis: Since its completion in 1991, the Turkwel dam has never achieved full capacity. Communities living around the area and further downstream have never experienced flooding due to overflow of the dam. As such it is important that KRCS continues to conduct awareness campaigns on the anticipated floods and its associated risks targeting the entire population that is at highest risk in both counties people through dissemination of early warning messages.

Risk analysis: Risks have been addressed in the risk management section.

Population to be assisted: KRCS will aim to support 150,000 people (30,000HH) living in floods prone areas long River Turkwel in West Pokot and Turkana counties.

Programme standards/benchmarks: The planned activities under this sector aim to meet the following intervention standards:

- Core Humanitarian Standard - Principle 8 - that aims to ensure that communities receive information and support from competent and well-trained staff and volunteers
- UNISDR Elements of an effective EWS - that calls for a people centered early warning system which empowers people at risk to have access to early warning information at the right time to enable them to act.
- IFRC Minimum Standards on Protection, Gender and Inclusion

P&B Output Code	DRR Outcome 1: Communities in high-risk areas are prepared for and able to respond to disaster	# of people reached by KRCS with early warning messages. (Target: 150,000 persons)															
	DRR Output 1.1: Communities take active steps to strengthen their preparedness for timely and effective response to disasters.	<ul style="list-style-type: none"> • # of volunteers deployed to support early warning activities (Target: 60) • # of HH kits prepositioned (Target: 1,000) • # of pre-crisis market assessments conducted (Target: 1) 															
	Activities planned Week	1	2	3	4	5	6	7	8	9	10	11	12	13	14	15	16
AP084	Dissemination of early warning and risk communication messages to communities in high risk areas																
AP001	Deploy 60 volunteers to support preparedness actions in the two counties at risk.																
AP001	Support social mobilization, mapping and identification of evacuation centres for communities																
AP001	Mapping and identification of relocation sites of KRCS warehouses at Lodwar to high grounds.																
AP001	Conduct rapid assessments to establish feasibility of CVA (Pre-Crisis market assessments)																
AP001	Attend coordination and planning meetings together with other stakeholders																

AP001	Preposition HHI kits for 1,000 families in the KRCS warehouse in Lodwar																		
AP001	Sensitization and awareness sessions on shelter kits use and build back safer if items are distributed																		
AP001	Assess current and projected needs in relation to health facilities and health personnel in the targeted area.																		
AP001	Procurement and prepositioning of water treatment chemicals (600,000 Aqua Tabs and 300,000 sachets of PUR)																		
AP001	Sensitization of target households on safe water storage and safe use of water treatment products in case of distribution																		
AP001	Assess capacities of existing water facilities and those that maybe affected to enable estimation of needs if the spillage occurs.																		
AP001	Review and update of the KRCS health surge team list. including PSS teams																		
AP001	Assess current and projected needs in relation to health facilities and health personnel in the targeted area.																		



Health

People targeted: 150,000 People (30,000HH)

Male: 73,500 people

Female: 76,500 people

Requirements (CHF): 21,423

Needs analysis: In case of spillage and subsequent flooding, affected communities will require search and rescue support, first aid and PSS services. As such, KRCS will ensure that teams and volunteers are ready to support these services in the affected areas.

Risk analysis: Risks have been addressed in the risk management section.

Population to be assisted: KRCS will aim to support 150,000 people living in floods prone areas along River Turkwel in West Pokot and Turkana counties.

Programme standards/benchmarks: This intervention will aim to provide assistance in line with the Sphere Standards.

P&B Output Code	Health Outcome 2: The immediate risks to the health of the affected populations are reduced through improved access to medical treatment	# of branches equipped to respond with first aid services (Target: 2)																	
	Health Output 2.1: Improved access to health care and emergency health care for the targeted population and communities.	<ul style="list-style-type: none"> # of first aid kits procured (Target: 10) # of volunteers trained in first aid (Target: 60) # of ambulances available to support initial response (Target: 2) 																	
	Activities planned Week	1	2	3	4	5	6	7	8	9	10	11	12	13	14	15	16		
AP022	Procurement and distribution of 10 First Aid kits (5 per branch)																		

AP022	First aid training for 60 volunteers																			
AP022	Preposition two ambulances in the two counties (5 days)																			
P&B Output Code	Health Output 2.3: Target population is reached with Search and Rescue activities	# of teams trained on aqua skills (Target: 2)																		
	Activities planned Week	1	2	3	4	5	6	7	8	9	10	11	12	13	14	15	16			
AP082	Conduct training of Red Cross Action Teams on aqua skills (30 volunteers total- 15 per county)																			
P&B Output Code	Health Outcome 6: The psychosocial impacts of the emergency are lessened	# of PSS counsellors deployed (Target: 10)																		
	Health Output 6.1: Psychosocial support provided to the target population as well as to RCRC volunteers and staff																			
	Activities planned Week	1	2	3	4	5	6	7	8	9	10	11	12	13	14	15	16			
AP023	Deployment of 10 PSS counsellors for 10 days upon disaster																			

Strategies for Implementation

Requirements (CHF): 21,674

P&B Output Code	S1.1: National Society capacity building and organizational development objectives are facilitated to ensure that National Societies have the necessary legal, ethical and financial foundations, systems and structures, competences and capacities to plan and perform	# of volunteers that are insured (Target: 60)																		
	Output S1.1.4: National Societies have effective and motivated volunteers who are protected																			
	Activities planned Week	1	2	3	4	5	6	7	8											
AP040	Ensure that volunteers are insured																			
AP040	Provide complete briefings on volunteers' roles and the risks they face																			
AP040	Provide psychosocial support to volunteers																			
P&B Output Code	Outcome S2.1: Effective and coordinated international disaster response is ensured	# of operational decisions made from feedback collected (Target: open)																		
	Output S2.1.3: NS compliance with Principles and Rules for Humanitarian Assistance is improved																			
	Activities planned Week	1	2	3	4	5	6	7	8											

AP084	Seek feedback through established channels including toll free line and ensure feedback is acted upon and used to improve the operation														
AP084	Deploy trained volunteers to engage communities and support dissemination of early warnings														

Funding Requirements

The overall amount requested by KRCS to implement this plan of action is CHF 148,019 as detailed in attached budget.

International Federation of Red Cross and Red Crescent Societies

*all amounts in Swiss
Francs (CHF)*

DREF OPERATION

MDRKE046 - KENYA - IMMINENT DAM SPILLAGE

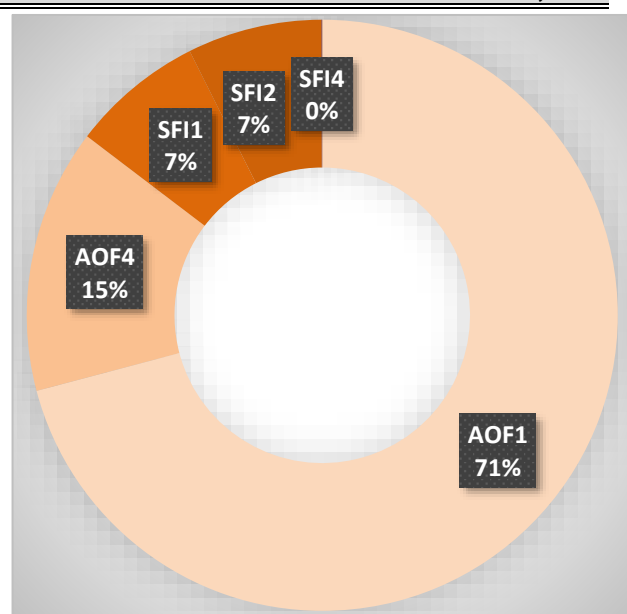
28/10/2020

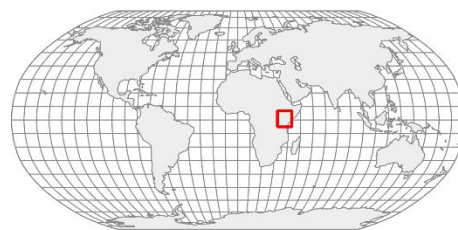
Budget by Resource

Budget Group	Budget
Water, Sanitation & Hygiene	24,219
Medical & First Aid	28,480
Relief items, Construction, Supplies	52,699
Transport & Vehicles Costs	10,522
Logistics, Transport & Storage	10,522
National Society Staff	7,566
Volunteers	24,972
Personnel	32,539
Workshops & Training	33,010
Workshops & Training	33,010
Information & Public Relations	897
Other General Expenses	9,077
General Expenditure	10,216
DIRECT COSTS	138,985
INDIRECT COSTS	9,034
TOTAL BUDGET	148,019

Budget by Area of Intervention

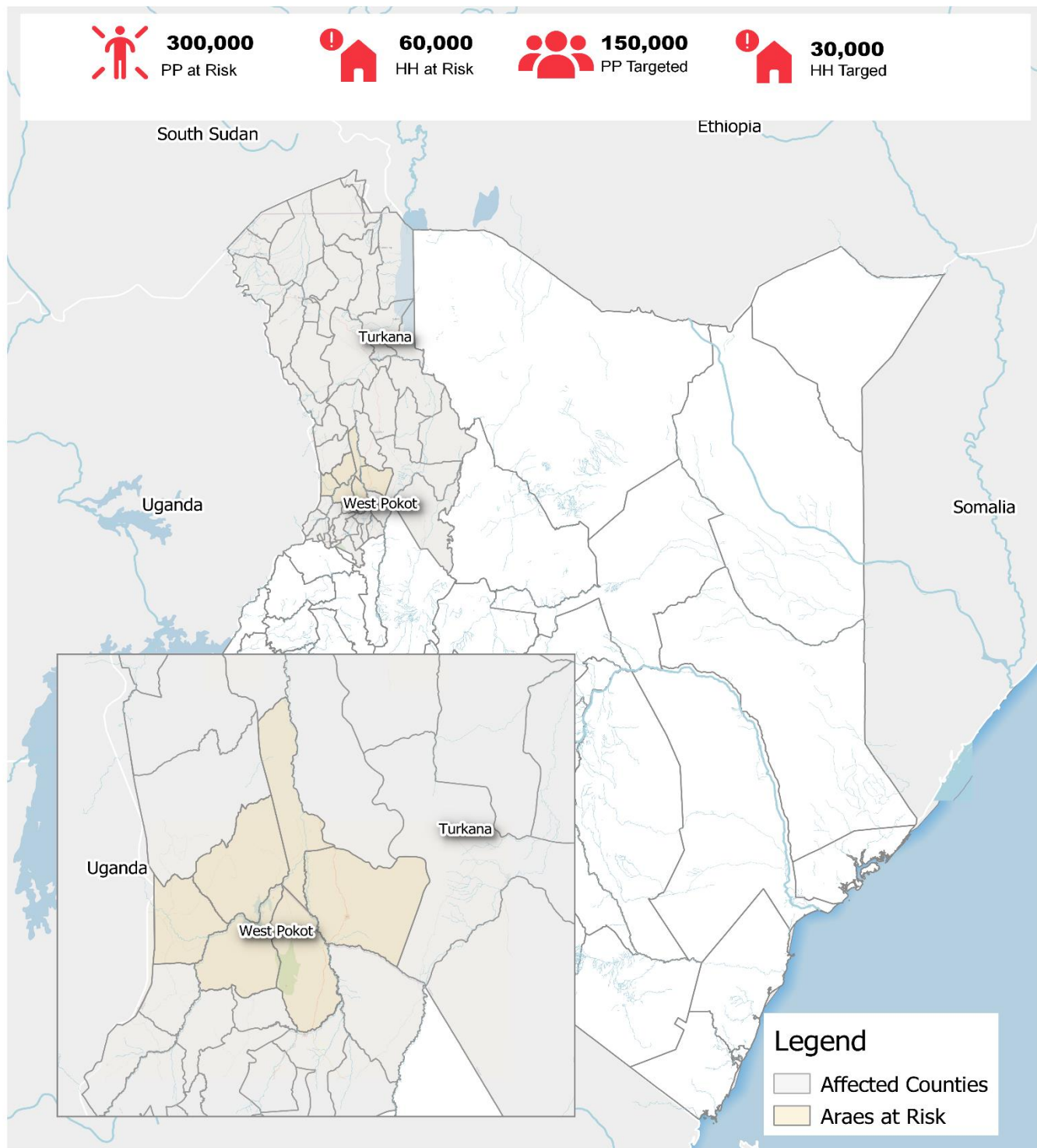
AOF1	Disaster Risk Reduction	104,921
AOF4	Health	21,423
SFI1	Strengthen National Societies	10,717
SFI2	Effective International Disaster Management	10,890
SFI4	Ensure a strong IFRC	67
TOTAL		148,019



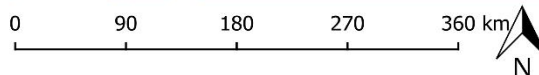


Kenya : Turkwell Dam Spillage Preparedness

27 October 2020 • MDRKE046



The maps used do not imply the expression of any opinion on the part of the International Federation of the Red Cross and Red Crescent Societies or National Societies concerning the legal status of a territory or of its authorities.
 Map data sources: GADM, Kenya RC, IFRC. Map produced by: IFRC Africa Regional Office, Nairobi



Reference documents



Click here for:

- Previous Appeals and updates
- Emergency Plan of Action (EPoA)

**For further information, specifically related to this operation please contact:
In the Kenya Red Cross Society:**

Kenya Red Cross Society:

Dr. Asha Mohammed, Secretary General; email: mohammed.asha@redcross.or.ke phone: +254 701 812 258

IFRC Eastern Africa CCST Office:

- John Roche, Head of CCST, email; john.roche@ifrc.org, phone; +254 780 436 710
- Patricia Kibui, EA CCST Emergency Operations Officer, phone: +254780422275; email: patricia.kibui@ifrc.org

IFRC office for Africa Region:

Adesh Tripathee, Head of Disaster Crisis Prevention, Response and Recovery Department, Nairobi, Kenya; phone +254 731 067489; email: adesh.tripathee@ifrc.org

In IFRC Geneva :

- Nicolas Boyrie, Operations Coordination, Senior Officer, DCPRR Unit Geneva; email: Nicolas.boyrie@ifrc.org
- Eszter Matyeka, DREF Senior Officer, DCPRR Unit Geneva; email: eszter.matyeka@ifrc.org

For IFRC Resource Mobilization and Pledges support:

IFRC Africa Regional Office for Resource Mobilization and Pledge: Franciscah Cherotich Kilel, Senior Officer Partnership and Resource Development, Nairobi, email: franciscah.kilel@ifrc.org;

For In-Kind donations and Mobilization table support: IFRC Africa Regional Office for Logistics Unit : RISHI Ramrakha, Head of Africa Regional Logistics Unit, email: rishi.ramrakha@ifrc.org; phone: +254 733 888 022

For Performance and Accountability support (planning, monitoring, evaluation and reporting enquiries): IFRC Africa Regional Office: Philip Komo Kahuho, PMER Coordinator, Email: Philip.kahuho@ifrc.org

How we work

All IFRC assistance seeks to adhere to the **Code of Conduct** for the International Red Cross and Red Crescent Movement and Non-Governmental Organizations (NGO's) in Disaster Relief and the **Humanitarian Charter and Minimum Standards in Humanitarian Response (Sphere)** in delivering assistance to the most vulnerable. The IFRC's vision is to inspire, **encourage, facilitate and promote at all times all forms of humanitarian activities** by National Societies, with a view to **preventing and alleviating human suffering**, and thereby contributing to the maintenance and promotion of human dignity and peace in the world.

The IFRC's work is guided by Strategy 2020 which puts forward three strategic aims:



Save lives.
protect livelihoods,
and strengthen recovery
from disaster and crises.



Enable **healthy**
and **safe** living.



Promote social inclusion
and a culture of
non-violence and peace.