


Emergency Plan of Action (EPoA) Philippines: Tropical Storm Goni

 International Federation
of Red Cross and Red Crescent Societies

| | | | |
|--|--|---|--|
| DREF Operation | MDRPH041 | Glide n°: | TC-2020-000214-PHL |
| For DREF; Date of issue: | 30/10/2020 | Expected timeframe: | 1 month |
| | | Expected end date: | 30/11/2020 |
| Category allocated to the of the disaster or crisis: Orange | | | |
| DREF allocated: CHF 51,174 | | | |
| Total number of people affected: | TBC | Number of people to be assisted: | 1,500 families (7,500 people) |
| Provinces affected: | Central Luzon (Region III) and Southern Luzon (Region IVa, Region V) | Provinces/Regions targeted: | Central Luzon (Region III) and Southern Luzon (Region IVa, Region V) |
| Host National Society presence (n° of volunteers, staff, branches): Philippine Red Cross (PRC) is the nation's largest humanitarian organization and works through 104 chapters covering all administrative districts and major cities in the country. PRC has more than 1,700 staff at national headquarters and chapter levels, and approximately one million volunteers and supporters, of whom some 500,000 are active volunteers. At the chapter level a programme called Red Cross 143 is established that sees volunteers trained, equipped and in place at the community (barangay) level - enhancing the overall capacity of the National Society to prepare for and respond to disaster situations. | | | |
| Red Cross Red Crescent Movement partners actively involved in the operation: PRC is working with the International Federation of Red Cross and Red Crescent Societies (IFRC) in this operation. ICRC and eight National Societies are present in the Philippines: American Red Cross, Canadian Red Cross, Finnish Red Cross, German Red Cross, Japanese Red Cross Society, Netherlands Red Cross, Spanish Red Cross and Qatar Red Crescent Society. | | | |
| Other partner organizations actively involved in the operation: Government coordination is led by the National Disaster Risk Reduction and Management Council (NDRRMC). Government ministries and agencies involved include the Department of Social Welfare and Development (DSWD), Local Government Units, the Philippine Armed Forces, and the Philippine National Police Force. I/NGOs and UN agencies are monitoring the situation through the Humanitarian Country Team (HCT) supported by OCHA. | | | |

A. Situation analysis

Description of the disaster

On the evening of 27 October 2020, a tropical depression developed over the Western Pacific Ocean, Northwest of Guam. Once inside the Philippine Area of Responsibility (PAR) it will be given local name "Goni" (Goni). As per the [Philippines Atmospheric Geophysical and Astronomical Services Administration \(PAGASA\)](#) bulletin at 11.00 am local time today (29 October 2020), Tropical Storm Goni has intensified into a severe tropical storm while moving westward, with a maximum sustained winds of 95 kilometers per hour the centre and gustiness of up to 115 kilometers per hour. It is forecasted to enter the eastern boundary of the PAR this afternoon or evening. It is forecasted to move generally westward by Saturday evening, then west-north westward by Sunday as it moves towards Quezon - Aurora area before making landfall on Sunday morning, 1 November 2020. The tropical storm is forecasted to reach typhoon Category 3 within 24 hours and will continue to intensify while moving over the Philippine Sea. As it moves towards eastern sections of Central Luzon (Region III) and Southern Luzon (Region IVa, Region V), it may bring heavy rains over those areas starting this Friday (30 October 2020). Click [here](#) to see the map of areas expected to be affected by the Tropical Storm Goni.

Tropical Storm Goni will take a similar path as of Tropical Storm Quinta (international name; Molave), which will increase the vulnerability of the people affected. According to National Disaster Risk Reduction and Management Council (NDRRMC) [Sitrep No. 4](#), due to Tropical Storm Quinta, 16 people died, 57,742 families were affected and 16,830 families are still being served inside 916 evacuation centers and left at least PHP 429.7 million damage to agriculture and infrastructure.

The NDRRMC has already directed regional counterparts to undertake precautionary measures in their areas of responsibility, including initiating pre-emptive evacuation of families in low-lying and mountainous areas if the situation warrants.

The Global Disaster Alert and Coordination System (GDACS) has reported that for Tropical Storm Goni, 6,527,303 people will be exposed to a Category 1 (120km/h), or higher typhoon and has issued an “Red Alert” rating of 2.5, predicting a possible “High” level of humanitarian impact. According to GDACS current data on Tropical Storm Goni, its current strength is of hurricane/typhoon is less than 118 kilometers per hour while its current maximum sustained winds is 130 kilometers per hour, potentially reaching up to 241 kilometers per hour in the next five days.

In addition to the tropical storms, La Niña is present, and most models suggest moderate to strong La Niña is likely to persist until April 2021. La Niña is usually associated with above normal rainfall conditions across most areas of the country during the last quarter of the year and early months of the following year. The rain forecast for the whole country during the months of November and December will be above normal rainfall conditions. The water level in dams and river basins are also forecasted to reach above normal level. Hence possible flooding and landslides could be expected.

According to PAGASA GONI will be the 18th tropical storm for 2020 to enter PAR. It would also be the 5th tropical storm for October alone. It is expected there will be a further one to three typhoons in November and two or three more in December 2020.

Considering the current COVID-19 situation in the country, PRC has incorporated COVID-19 guidelines into its response protocols. These measures will limit the risks of spreading the virus and protecting those involved (staff, volunteers and relief item recipients). These measures will be incorporated into this DREF operation.

In order to be better prepared for the potential impact of tropical storm, and to allow the National Society to support local government preventive evacuation and initiate immediate disaster response, PRC with the support from IFRC is requesting the activation of an imminent crisis DREF allocation.

This imminent DREF will support the mobilization of assets, stocks and personnel (staff and volunteers), personal protective equipment (PPE), preventative evacuations, rapid needs assessments, and distribution of essential household and emergency shelter items if required. The Emergency Plan of Action (EPoA) and operations budget will be revised as the situation evolves.

Summary of the current response

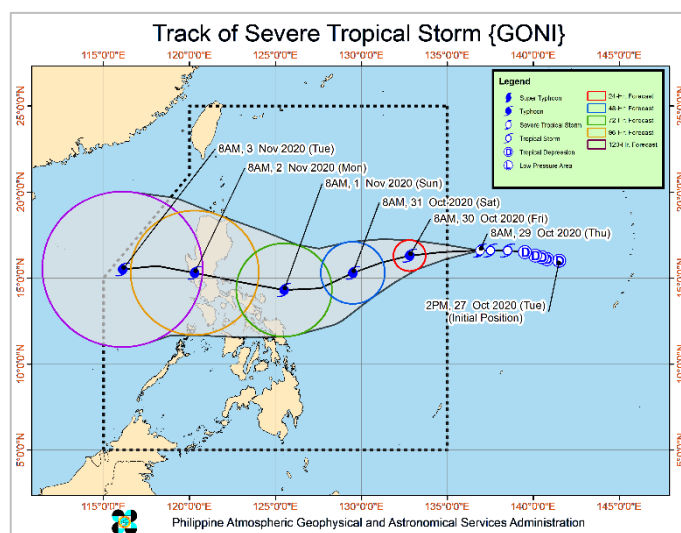
Overview of host National Society

In accordance with PRC’s standard operating procedures, the Operations Centre (OpCen), which functions 24/7, is on heightened alert. National Headquarters (NHQ) has instructed chapters to be ready to respond through the delivery of services including – relief, first aid, search and rescue, psychosocial support and welfare.

PRC chapters in the areas most likely to be affected will communicate with community volunteers (Red Cross 143) for information, and to start implementing early warning measures in coordination with the local government. Chapter Red Cross Action Teams (RCAT 143) are on standby. National Disaster Response Teams (NDRT), Emergency Response Units (ERU), health and welfare personnel have also been alerted, for possible deployment. PRC NHQ is preparing the deployment of assets, stocks and personnel to Chapters that are in areas mostly likely to be affected.

Overview of Red Cross Red Crescent Movement in country

PRC is leading the overall response operation. The PRC works with the IFRC, the International Committee of the Red Cross (ICRC) and eight National Societies in-country – American Red Cross, Canadian Red Cross, Finnish Red Cross,



Path of Tropical Storm Goni. (Photo: PAGASA)

German Red Cross, Japanese Red Cross Society, Netherlands Red Cross, Spanish Red Cross and Qatar Red Crescent Society.

Movement coordination

The IFRC is supporting PRC in disseminating updates to Movement partners with in-country presence and coordinating with the Asia Pacific Regional Office (APRO) in Kuala Lumpur in accordance with the IFRC Secretariat's Emergency Response Framework. PRC hosts Movement coordination meetings and operational meetings to share information with partners. IFRC and PRC are also coordinating with NSs and remain in close contact with ICRC on any security-related considerations.

PRC and the IFRC Philippines Country Office is working in close coordination with the German Red Cross to identify, where appropriate, early actions (which are part of a Forecast-based Financing (FbF) project for tropical storms) which could be incorporated.

Overview of other actors in country

Coordinating with the authorities

The NDRRMC serves as the President's adviser on disaster preparedness programs, disaster operations and rehabilitation efforts undertaken by the government and the private sector. It acts as the top coordinator of all disaster management and the highest allocator of resources in the Philippines.

The Republic Act 10072 (Philippine Red Cross Act of 2010) recognizes PRC as an independent, autonomous, non-governmental organization auxiliary to the authorities of the republic of the Philippines in the humanitarian field. As auxiliary to the public authorities, PRC maintains a strong relationship with government bodies through participation or collaboration with (i) the NDRRMC; (ii) the provincial, municipal and barangay (community) disaster risk reduction and management councils; and (iii) the local government units defined in the Disaster Risk Reduction and Management Act 2010. PRC participates in NDRRMC meetings and coordinates with the DSWD and Department of Health.

The Inter Agency Task Force for the Management of Emerging Infectious Diseases (IAFT) coordinates the Government's response to COVID-19. All activities carried out within this DREF operation will be coordinated with LGU's in compliance with the national protocols set by the IAFT.

Inter-agency coordination

Continuous monitoring of the tropical storm is also being carried out by various government and non-government agencies, including members of the Humanitarian Country Team (HCT). At country level, PRC and IFRC are observers to, and participate in meetings of the Humanitarian Country Team (HCT) held both during disasters and non-emergency times. PRC and IFRC are involved in relevant government-led cluster information sharing, planning, and analysis at all levels while IFRC supports PRC coordination efforts through representation in other relevant clusters as required.

The IFRC is the co-lead of the Shelter Cluster with the government lead agency Department of Social Welfare and Development (DSWD). The IFRC coordination focal point in the country coordinates with OCHA and sector partners on inter-agency to prepare for the tropical storm. Shelter partners have been informed that they may be mobilized should there be need for joint assessment in the field. Shelter partners who have local presence in areas to be likely affected by the tropical storm will be the first source of information which can be shared among partners. COVID-19 guidelines for shelter activities are already in place and can be utilized by partners.

Needs analysis, targeting, scenario planning and risk assessment

Needs analysis

Tropical Storm Goni is likely to have impact on Central Luzon (Region III) and Southern Luzon (Region IVa and Region V). Based on previous experience of responding to similar events, it can be anticipated that Tropical Storm Goni will bring strong winds and flooding. The eastern seaboard of Central Luzon is mostly rural with typical light weight structures. Most of Central Luzon is farmland, flat and susceptible to flooding. This is known as the rice capital of the Philippines. Tropical Storm Goni is likely to cause wind damage at least to light structures and flooding to low lying areas and flash floods with a potential for landslides. In some areas, flooding can be prolonged.

It is anticipated that Tropical Storm GONI will result in direct needs related to essential household and emergency shelter items, water, sanitation and hygiene (WASH), first aid and psychosocial support. Its overall impact will be known once the tropical storm makes its landfall, and the needs are determined following the completion of the rapid need assessments.

Based on forecasted projection, regions which have been identified as most likely to be affected by Tropical Storm Goni include the Southern and Central Luzon. A summary snapshot on some key statistics in the Southern and Central Luzon prepared by OCHA is attached in [Annex 1](#).

In accordance with the Philippines COVID-19 inter-agency task force (IATF), most of the areas likely to be affected are classified as “*Modified General Community Quarantine*” except in Metro Manila (NCR) where the status is “*General Community Quarantine*”. Based on the [WHO situation report on 27 October 2020](#), out of total 373,144 confirmed cases reported in the Philippines, 55 per cent are male, with the most affected age group 20-29 years (27 per cent) followed by 30-39 years (24 per cent). A total of 49 per cent positive cases were reported from National Capital Region (NCR), followed by CALABARZON (18 per cent), Central Visayas (6.4 per cent), and Central Luzon (5.8 per cent).

Possible triggering factors, affected areas and impact have been analysed as follows:

| Triggering factors | Possible affected areas | Impact |
|-------------------------------|---|---|
| Continuous rainfall | <ul style="list-style-type: none"> - Southern Luzon - Central Luzon | <ul style="list-style-type: none"> - Flooding - Landslide - Pre-emptive evacuation centers |
| Strong winds and storm surges | Coastal areas of the provinces of Northern and Central Luzon: <ul style="list-style-type: none"> - Aurora, - Isabela, - Zambales Southern Luzon: <ul style="list-style-type: none"> - Bicol Regions (Catanduanes, Camarines Norte, Camarines Sur, Albay and Sorsogon) - MIMAROPA (Mindoro, Marinduque, Romblon and Palawan) Western Visayas: <ul style="list-style-type: none"> - Aklan, Antique, Capiz, Guimaras, Iloilo and Negros Occidental | <ul style="list-style-type: none"> - Flash Flood - Landslide - Destruction to properties and structures, and livelihood - Casualties (loss of lives, injuries, and missing) - Separation of family members - Displacement of population |
| Landslides/mudflows | <ul style="list-style-type: none"> - Sierra Madre (Aurora, Rizal and Quezon provinces) - Benguet and Ifugao - Mt. Province - Bicol Region | <ul style="list-style-type: none"> - Flash Flood - Destruction to environment - Destruction to properties and structures, and livelihood - “Bury” people alive - Separation of family members - Displacement of population |
| Flooding | <ul style="list-style-type: none"> - Metro Manila - Bulacan - Pangasinan - Tarlac - Nueva Ecija - Bataan - CALABARZON - Bicol Region | <ul style="list-style-type: none"> - Flash Flood - Destruction to properties and structures, and livelihood - Casualties (loss of lives, injuries, and missing) - Separation of family members - Displacement of population - Health problems (fever, cough and cold, dengue and leptospirosis) - Water may be contaminated by floodwaters and may lead to the outbreak and spread of diseases brought by diseases-carrying mosquitoes and animals |

Targeting

Geographical areas targeted under this operation are provinces in regions which have been identified as most likely to be affected by Tropical Storm Goni. These include the Southern and Central Luzon. This has been based on the current data produced by weather forecasting agencies on the anticipated trajectory of Tropical Storm Goni, as of 29 October 2020. As more information becomes available on the impact of the tropical storm, it may be necessary to change the targeting, and include other provinces based on the affected population's level of vulnerability and coping capacity.

PRC always ensures that its responses and programmes are aligned with its own as well as IFRC's commitment to take into account gender and diversity, for example, putting focus on and targeting women/child-headed households, pregnant or lactating women, and men, women and children made vulnerable by disasters; families with persons with disability, elderly, those suffering from chronic illnesses, families with children under five years old, families that have not received any or sufficient assistance from the government or other organizations, those belonging to the socially vulnerable families and those who lack relevant resources to cope with the basic humanitarian needs on their own.

Estimated disaggregated data for population targeted

| Category | Estimated % of target group | % female | % male |
|--------------------------------|-----------------------------|----------|--------|
| Young Children (under 5 years) | 10% | 5% | 5% |
| Children (5-17 years) | 30% | 15% | 15% |
| Adults (18-49 years) | 43% | 21% | 22% |
| Elderly (>50 years) | 17% | 9% | 8% |
| People with disabilities | 15% | 7.5% | 7.5% |

Scenario planning

The following possible scenarios are developed for pre-disaster planning and anticipation of disaster events over highly threaten areas based on the current forecast for Tropical Storm Goni:

- Flooding caused by spill-over of water from major river basin and dams located in Central and Northern Luzon.
- Landslide areas over mountainous provinces such as Mt. Province, Benguet, Ifugao, Rizal, Aurora, Nueva Vizcaya, Ilocos Regions and Southern Luzon.
- Part of Aurora province may be isolated due to landslides.
- Metro Manila particularly Quezon City, Valenzuela City, Caloocan City, Malabon City, and Navotas City will also be affected by flooding if over-spilled of water Dam in Angat and/or flood water coming from Bulacan.
- High numbers of shelter be destroyed particularly in Eastern part of Luzon where mostly are made of light materials.
- High numbers of evacuees are expected due to pre-emptive evacuation before typhoon will make landfall.
- High damage or destruction on property and livelihood are expected along coastal areas due to strong storm surges particularly Aurora, Isabela, Cagayan, Apari, and part of Quezon provinces.
- Basic lifelines particularly electrical supply, water supply, communication, transportation, fuel, and markets will be closed or will not be functioning during the onset of the disaster.
- Access to affected areas particularly areas affected by landslides will be difficult.
- PRC chapters with less capacity on disaster management will be overwhelmed and likely to request for surge support.

| Scenario development | Humanitarian consequence | Potential Response |
|---|--------------------------|--|
| Rapid needs assessments confirm limited damage and the response not required and/or within the capacity and resources of PRC. | Low | No action required. |
| Rapid needs assessments confirm more damage than anticipated, and the response required exceeds the resources available through the DREF. | High | Request 2 nd allocation from DREF to expand the operation and support more immediate response activities, and mobilization of funds for basic support to self-recovery. |
| Rapid needs assessments confirm more extensive damage than anticipated, and the response required exceeds the resources available through the DREF. | Medium | Expand the operation under an Emergency Appeal with the inclusion of early recovery activities over a longer period. |
| More weather disturbances will impact the same geographical areas affected by GONI causing increased flooding and landslides. | Medium | Continuous monitoring of weather systems and contingency planning with PRC chapters in the affected areas so that activities can be initiated as quickly as possible to lessen the impact possible typhoon conditions. Expand the operation under an Emergency Appeal with the inclusion of early recovery activities over a longer period. |
| COVID-19 infection occurs and spreads rapidly, leading to the need to isolate communities that remain vulnerable to both cyclone and health risks. | Medium | PRC has incorporated COVID-19 guidelines into its response protocols. All the volunteers and staff follow adequate control measures to prevent a further worsening of the outbreak. |

Operation Risk Assessment

Possible operational risks are shown below:

- There is high risk associated with ongoing COVID-19 situation in country. During the implementation of this operation, PRC will follow the existing government and Movement guidance related to the COVID-19 crisis.

- There is potential for more weather disturbances, which could lead to flooding and increase the risk of land and landslides, exacerbating the humanitarian situation for the affected families. This could also result in issues if bridges and roads become blocked.

B. Operational strategy

Overall Operational objective

This imminent DREF operation aims to provide effective disaster response is placed to provide timely humanitarian assistance to the most vulnerable individuals and families. The National Society will mobilize assets, stocks and personnel (staff and volunteers) and preposition sufficient household items to support 1,500 families in Central Luzon (Region III) and Southern Luzon (Region IVa, Region V) for one month.

Summary of proposed strategy for this imminent DREF operation:

- To monitor the current situation and ensure that relevant information shall be communicated effectively by:
 - Activating all PRC Chapter particularly those within areas highly threatened by Tropical Storm Goni to be on full alert, readiness, and 24-hour monitoring.
 - Alerting and mobilizing community Red Cross 143 to provide early warning information to the community and most vulnerable of the threat and risks of the typhoon, provide up-to-date report to PRC, and take precautionary measures to minimize effects
- Ensure that personnel, assets, and resources are readily available by:
 - Activating the 24-hour response team on-duty at the chapter.
 - Deploying of ERU personnel as needed.
 - Prepositioning and possible mobilization of PRC assets in strategic areas - Albay, Batangas, Manila - Mandaluyong, Nueva Vizcaya and Subic.
 - Ensure availability of emergency funds to support Chapter operations.
 - Mobilize available relief supplies stocks at various warehouses in Manila, Mandaluyong, Cebu and Subic.
 - Mobilize of initial 1,500 sets of non-food items such as sleeping kits, hygiene kit, jerry can, and tarpaulins.
 - Activate partner financial service provider - PHLPPost
- Incorporating COVID-19 related expenses; additional allowances, volunteer's insurance, vehicle rental, PPE and other relevant materials in the budget and forecast.

The operation will be underpinned by a commitment to quality programming that involves:

- Continuous and in-depth assessments and analyses to inform the design and ongoing implementation of the programme.
- Ongoing process of adjustments based on these assessments.
- Adherence to protection, gender and inclusion (PGI) measures, with focus on disability inclusive development.
- Establishment of mechanisms to facilitate two-way communication with, and ensure transparency and accountability to, disaster-affected people, and highlighting the nature of communication and information as a life-saving mechanism.
- Management and delivery of the programme will be informed by appropriate monitoring and evaluation.
- Market assessments will be integrated with the in-depth assessment as cash-based interventions are being considered based on the needs and feasibility.

Human resources

For PRC, all relief activities will be implemented by the PRC chapters utilizing existing staff and Red Cross 143 (RC143) volunteers, Red Cross Action Teams (RCAT134) and NDRT from other chapters. IFRC will support PRC in providing technical and support service staff as required to ensure accountability and compliance with regards to the operation.

Community engagement and accountability (CEA)

Community engagement and accountability and feedback/response mechanisms will be integrated into the operation to ensure that affected populations have direct access to information on the nature and scope of services provided by PRC, together with processes that will enable community participation and ease of providing feedback and giving responses. A Barangay Recovery Committee (BaReCoM) will be formed to support community engagement as they are direct representatives from their own communities. The community can directly provide feedback to the BaReCoM members, which are essential for continuous improvements of the programme implementation. BaReCoM is composed of a representative number of community representatives – barangay/purok officials, representative of all sectors in the community such as farmers, elderly group, women's group, persons with disabilities, health workers, etc.

Communication

IFRC will support PRC communications team to communicate with external audiences with a focus on the typhoon and the humanitarian action assisting people affected by the disaster. The communications will generate visibility and support for the humanitarian needs and the Red Cross Red Crescent response. Close collaboration will be maintained between the Asia Pacific IFRC regional communications unit, IFRC CO/CCST and the National Society to ensure a coherent and coordinated communications approach. PRC staff and volunteers across the country will be encouraged to actively contribute to telling their Red Cross stories through their own social media networks. Written and audio-visual content will be produced, along with relevant social media and digital products, as appropriate. Communications content will be promoted on regional and global IFRC channels and shared with National Societies in the IFRC network. Media and social media scanning will aim to increase effectiveness and contribute to assessing and managing risks. A collaborative team of PRC and IFRC communications officers will work together to generate high quality photos, video clips and news stories for use across IFRC and PRC social media platforms, website and news media.

Information technology and telecommunications

This imminent DREF will cover costs of mobile phone credits and internet cards for the chapters involved to ensure that staff and volunteers involved in the operation are accessible via mobile phones. Where necessary, satellite phones will be made available. The chapters will have sufficient computer software and hardware capacity, and support for the operational requirements.

Security

The IFRC security framework is applicable for this operation. With regards to PRC staff and volunteers, the National Society security protocols will apply. IFRC will coordinate with ICRC on any possible security issues in the likely affected areas. Coordination will also be observed with ICRC. All PRC staff and chapter volunteers are encouraged to complete the IFRC Stay Safe e-learning courses, i.e. Stay Safe Personal Security, Stay Safe Security Management and Stay Safe Volunteer Security. There are increased health risks due to COVID-19 and seasonal mosquito borne diseases and IFRC staff adhere to both IFRC guidelines and standards and PRC standards as per government mandated COVID-19 protocols. Staff and volunteers before deployment into the affected area to be briefed on the situation and emergency protocols.

Planning, monitoring, evaluation and reporting (PMER)

Reporting on the operation will be carried out in accordance with the IFRC reporting standards. Regular updates will be issued during the operation's timeframe with a final report issued within three months after the end of the operation. The operation team will have technical PMER capacity and additional technical support is provided through IFRC APRO PMER team. The operation monitoring teams will make field visits as needed and remote monitoring will be prioritized if the operation areas are not accessible due to COVID-19 movement restriction. This will help identify and, where possible and necessary, resolve any issues. Necessary tools and templates for regular data collection and reporting will be adopted from existing PMER resources.

Administration and finance

The IFRC provides the necessary operational support for review, validation of budgets, bank transfers, and technical assistance to PRC on procedures for justification of expenditures, including the review and validation of invoices. PRC is accustomed to and competent in delivering these financial procedures to the required standards.

Logistics and supply chain management

Logistics activities aim to effectively manage the supply chain, including procurement, customs clearance, fleet, storage and transport to distribution sites in accordance with the operation's requirements and aligned to IFRC's logistics standards, processes and procedures. Logistics support for this operation is being provided through the strong capacity of the PRC logistics built over the last years, supported by an experienced IFRC country office logistics team.

PRC is in the process of dispatching relief items from existing in-country preparedness stocks with the support of IFRC Philippines Country Office team to meet the immediate operational needs. All in-country transportation of relief items is being carried out by utilizing PRC existing fleet and rented vehicles, depending on the urgency and availability of vehicles. The IFRC Asia Pacific operation logistics, procurement and supply chain management department (OLPSCM) in Kuala Lumpur will extend its technical support to PRC and IFRC country office as needed.

C. Detailed Operational Plan¹



Shelter

People targeted: 7,500

Male: 3,795

Female: 3,705

Requirements (CHF): 42,675

| Needs and risk analysis | Assistance planned and population to be assisted |
|--|--|
| <ul style="list-style-type: none"> - Based on previous experience of responding to similar tropical weather disturbances; essential household items may be lost; people's homes damaged or destroyed. | <ul style="list-style-type: none"> - Essential household items including blankets and sleeping mats will be pre-positioned ready for immediate distribution (if required) to 1,500 families (7,500 people). - Tarpaulins (two per family) will be pre-positioned ready for immediate distribution (if required) to 1,500 affected families (7,500 people). |

Programme standards/benchmarks: Sphere Standards - Section 7, Shelter and Settlements.

| P&B Output Code | Shelter Outcome 1: Communities in disaster and crisis affected areas restore and strengthen their safety, well-being and longer-term recovery through shelter and settlement solutions | 1,500 families targeted with shelter and settlement solutions in the affected | | | | | | | | | | | | | | | | |
|-----------------|--|---|---|---|---|---|---|---|---|---|---|----|----|----|----|----|----|----|
| | Shelter Output 1.1: Short, medium and long-term shelter and settlement assistance is provided to affected households | 1,500 families targeted with essential household items 1,500 families targeted with emergency shelter assistance | | | | | | | | | | | | | | | | |
| | Activities planned | week | 1 | 2 | 3 | 4 | 5 | 6 | 7 | 8 | 9 | 10 | 11 | 12 | 13 | 14 | 15 | 16 |
| AP005 | Pre-position essential household items and emergency shelter items from PRC existing stocks to the areas of most likely to be affected | | x | | | | | | | | | | | | | | | |
| AP005 | Coordination with relevant sectors, the government and other stakeholders | | x | x | x | x | | | | | | | | | | | | |
| AP005 | Conduct Rapid Disaster Assessment and Needs Analysis (RDANA) in affected areas | | x | | | | | | | | | | | | | | | |

¹ In the EPOA, the calculation for the size of household is 4.5 member per household.



Livelihoods and basic needs

People targeted: 7,500
 Male: 3,795
 Female: 3,705
Requirements (CHF): 3,016

| Needs and risk analysis | Assistance planned and population to be assisted |
|--|---|
| - Families displaced to evacuation centres need hot meals – this is also part of PRC Welfare services. | - 7,500 hot meals provided to 500 people in 15 chapters |

| P&B Output Code | Livelihoods and basic needs Outcome 1: Communities, especially in disaster and crisis affected areas, restore and strengthen their livelihoods | <i>7,500 people provided with hot meals</i> | | | | | | | | | | | | | | | |
|--------------------|---|---|---|---|---|---|---|---|---|---|----|----|----|----|----|----|----|
| | Livelihoods and basic needs Output 1.2: Basic needs assistance for livelihoods security including food is provided to the most affected communities | <i>7,500 people provided with hot meals</i> | | | | | | | | | | | | | | | |
| Activities planned | week | 1 | 2 | 3 | 4 | 5 | 6 | 7 | 8 | 9 | 10 | 11 | 12 | 13 | 14 | 15 | 16 |
| AP008 | Distribution of hot meals to 500 people in 15 chapters | x | | | | | | | | | | | | | | | |



Health

People targeted: 7,500
 Male: 3,795
 Female: 3,705
Requirements (CHF): 4,524

| Needs and risk analysis | Assistance planned and population to be assisted |
|---|--|
| - Based on previous experience of responding to similar tropical weather disturbances; there is potential for flooding caused by associated heavy rainfall. It is anticipated that there will be a need to mobilize search and rescue teams to support families who need assistance evacuating from affected areas; as well as provision of first aid to the sick or injured. | - Water, search and rescue teams will be put on standby, ready for deployment - Deployment of one (1) unit Amphibian, one (1) unit Pay Loaders, and two (2) 10-Wheeler trucks to Regional Warehouse in Subic, Olongapo City |

| | |
|--|--|
| <ul style="list-style-type: none"> - Potential flooding can increase the risk of water and vector borne diseases, including dengue and malaria. It is anticipated that insecticide-treated mosquito nets will be required as a preventative measure. - Additionally, impacts could result in loss of life, leaving people in traumatized. Therefore, psychological first aid (PFA) and psychosocial support (PSS) will be required. - Considering the current COVID-19 situation in country, PRC has incorporated COVID-19 into its response protocols. These measures will limit the risks of spreading the virus and protecting those involved (staff, volunteers and item recipients). | <ul style="list-style-type: none"> - Mobilization 3 units water tankers, 2 units rescue trucks, 2 units amphibians, 6 units fast rescue boats, 5 units delivery trucks, pay-loaders in Metro Manila and Southern Luzon - Trained volunteers in first aid will be mobilized - Trained volunteers in PSS will be mobilized - Mosquito nets will be pre-positioned ready for immediate distribution (if required) to 1,500 families (7,500 people) - Pre-position of PPE kits for staff and volunteers |
|--|--|

Programme standards/benchmarks: Sphere, Global First Aid Reference Center and PRC Standard First Aid Manual, Epidemic Control for Volunteers Toolkit, Psychosocial Support in Emergencies Guidelines, and eCBHFA modules.

| | | | | | | | | | | | | | | | | | | |
|----------------------------|--|---|---|---|---|---|---|---|---|---|---|----|----|----|----|----|----|----|
| P&B Output Code | Health Outcome 2: The immediate risks to the health of the affected populations are reduced through improved access to medical treatment | <i>1,500 people assisted with search and rescue and first aid services in affected areas</i> | | | | | | | | | | | | | | | | |
| | Health Output 2.2: Clinical management of identified cases reduces the impact and spread of the disease/outbreak | <i># of PPE pre-positioned at chapter level</i> | | | | | | | | | | | | | | | | |
| | Activities planned | week | 1 | 2 | 3 | 4 | 5 | 6 | 7 | 8 | 9 | 10 | 11 | 12 | 13 | 14 | 15 | 16 |
| AP022 | Provision of Personal Protective Equipment (PPE) for staff and volunteers | | x | x | | | | | | | | | | | | | | |
| AP022 | Provision of PPE as relevant such as masks, hand sanitizers and access to handwashing for vulnerable people in evacuation shelters, the sick, and provide referral to care institutions. | | x | x | x | | | | | | | | | | | | | |
| P&B Output Code | Health Output 2.3: Target population is reached with Search and Rescue activities | <i>1 water, search and rescue teams deployed 25 volunteers mobilized to provide first aid</i> | | | | | | | | | | | | | | | | |
| | Activities planned | week | 1 | 2 | 3 | 4 | 5 | 6 | 7 | 8 | 9 | 10 | 11 | 12 | 13 | 14 | 15 | 16 |
| AP082 | Pre-position water, search and rescue equipment from PRC existing stocks to the areas of most likely to be affected | | x | | | | | | | | | | | | | | | |
| AP082 | Mobilized search and rescue teams in affected areas | | x | x | x | | | | | | | | | | | | | |
| AP082 | Deployment of one (1) unit Amphibian, one (1) unit Pay Loaders, and two (2) 10-Wheeler trucks to Regional Warehouse in Subic, Olongapo City | | x | | | | | | | | | | | | | | | |
| AP082 | Mobilize existing chapter level trained volunteers to provide first aid, as needed | | x | x | x | x | | | | | | | | | | | | |
| P&B Output | Health Outcome 4: Transmission of diseases of epidemic potential is reduced | <i>7,500 people reached with emergency health</i> | | | | | | | | | | | | | | | | |

| Code | Health Output 4.2: Vector-borne diseases are prevented | | | | | | | | | | 1,500 families targeted with mosquito nets | | | | | | | |
|-----------------|---|------|---|---|---|---|---|---|---|---|---|----|----|----|----|----|----|----|
| | Activities planned | week | 1 | 2 | 3 | 4 | 5 | 6 | 7 | 8 | 9 | 10 | 11 | 12 | 13 | 14 | 15 | 16 |
| AP021 | Pre-position mosquito nets from PRC exiting stocks to the areas of most likely to be affected | | x | | | | | | | | | | | | | | | |
| P&B Output Code | Health Outcome 6: The psychosocial impacts of the emergency are lessened | | | | | | | | | | 500 people receive psychosocial support in the affected areas | | | | | | | |
| | Health Output 6.1: Psychosocial support provided to the target population as well as to RCRC volunteers and staff | | | | | | | | | | 25 volunteers mobilized to provide psychosocial support | | | | | | | |
| | Activities planned | week | 1 | 2 | 3 | 4 | 5 | 6 | 7 | 8 | 9 | 10 | 11 | 12 | 13 | 14 | 15 | 16 |
| AP023 | Mobilize existing chapter level trained volunteers to provide psychological FA, PSS and other welfare services, as needed | | x | | | | | | | | | | | | | | | |
| AP023 | Provide PSS to people affected by the typhoon | | | x | | | | | | | | | | | | | | |
| AP023 | Provide PSS to staff and volunteers | | | x | | | | | | | | | | | | | | |



Water, sanitation and hygiene

People targeted: 7,500

Male: 3,795

Female: 3,705

Requirements (CHF): 201

| Needs and risk analysis | Assistance planned and population to be assisted |
|---|---|
| <ul style="list-style-type: none"> - Based on previous experience of responding to similar tropical weather disturbances; there is a risk that water supply infrastructure will be damaged and water sources contaminated. It is anticipated that water purifying units and water containers will be required as a priority. | <ul style="list-style-type: none"> - PRC ERU WASAR (Water Search and Rescue) will be put on standby, ready for deployment. - WASH assets will be put on standby from Albay Chapter. - Hygiene kits and jerry cans - will be pre-positioned ready for immediate distribution to 1,500 families (7,500 people), if required. |

Programme standards/benchmarks: Sphere, Global Water and Sanitation Initiative, Household Water Treatment and Safe Storage in Emergencies Manual.

| P&B Output Code | WASH Outcome1: Immediate reduction in risk of waterborne and water related diseases in targeted communities | 7,500 people provided with safe water (according to WHO standards) in the affected area |
|-----------------|---|---|
| | | |

| P&B Output Code | WASH Output 1.2: Daily access to safe water which meets Sphere and WHO standards in terms of quantity and quality is provided to target population | 1,500 families targeted with jerry cans # of litres of water distributed (as needed) | | | | | | | | | | | | | | | | | |
|-----------------|--|---|------|---|---|---|---|---|---|---|---|---|----|----|----|----|----|----|----|
| | | Activities planned | week | 1 | 2 | 3 | 4 | 5 | 6 | 7 | 8 | 9 | 10 | 11 | 12 | 13 | 14 | 15 | 16 |
| AP026 | Pre-position water containers (jerry cans) from the PRC exiting stocks to the areas of most likely to be affected | x | | | | | | | | | | | | | | | | | |
| AP026 | Mobilize clean water through the PRC ERU WASAR, if needed | x | x | | | | | | | | | | | | | | | | |
| AP026 | Coordinate with other WASH actors on target group needs and appropriate response. | x | x | x | | | | | | | | | | | | | | | |
| P&B Output Code | WASH Output 1.4: Hygiene promotion activities which meet Sphere standards in terms of the identification and use of hygiene items provided to target population | # of IEC materials printed | | | | | | | | | | | | | | | | | |
| | | Activities planned | week | 1 | 2 | 3 | 4 | 5 | 6 | 7 | 8 | 9 | 10 | 11 | 12 | 13 | 14 | 15 | 16 |
| AP030 | Select target groups, key messages, and methods of communicating with beneficiaries | x | | | | | | | | | | | | | | | | | |
| AP030 | Develop a hygiene communication plan that includes COVID-19 considerations. Train volunteers to implement activities from communication plan. | x | | | | | | | | | | | | | | | | | |
| AP030 | Reprint/reproduce IEC materials | x | x | | | | | | | | | | | | | | | | |
| P&B Output Code | WASH Output 1.5: Hygiene-related goods (NFIs) which meet Sphere standards and training on how to use those goods is provided to the target population | 1,500 families targeted with hygiene kits | | | | | | | | | | | | | | | | | |
| | | Activities planned | week | 1 | 2 | 3 | 4 | 5 | 6 | 7 | 8 | 9 | 10 | 11 | 12 | 13 | 14 | 15 | 16 |
| AP030 | Pre-position hygiene kits from the PRC existing stocks to the areas of most likely to be affected (if there is a need to be distributed, there will be hygiene promotion undertaken) | x | | | | | | | | | | | | | | | | | |



Disaster Risk Reduction

People targeted²: 7,500

Male: 3,795

Female: 3,705

Requirements (CHF): N/A

| Need analysis | Assistance planned and population to be assisted |
|---|---|
| - Prior to landfall of Typhoon GONI, there is a need to mobilize assets, stocks and personnel closer to areas that most likely to be affected. This will enable | - Rapid needs assessments will be conducted after landfall; with provision made for aerial support made in the budget for the operation. This will only |

² PSA – 49.6 per cent are female and 50.4 per cent are men

PRC to initiate an immediate disaster response operation; and ensure the immediate needs of affected families can be addressed as efficiently and effectively as possible.

be committed if/when an impact with expected considerable damage is confirmed.

- Essential household items and emergency shelter will be pre-positioned, ready for immediate distribution if required.
- PRC staff and volunteers; as well as equipment will be mobilized.

Programme standards/benchmarks: IFRC Framework for Community Resilience. IFRC Plan of Action Climate Change, Minimum Standards for Climate Smart Local DRR, PRC Minimum Standard for Safe and Resilient Barangays, Movement-wide commitments and minimum actions for community engagement and accountability.

| P&B Output Code | DRR Outcome 1: Communities in high risk areas are prepared for and able to respond to disaster | 7,500 people supported by the PRC response to the typhoon | | | | | | | | | | | | | | | | |
|-----------------|---|--|---|---|---|---|---|---|---|---|---|----|----|----|----|----|----|----|
| | DRR Output 1.1: Communities take active steps to strengthen their preparedness for timely and effective response to disasters. | 10 staff mobilized to support the response 150 volunteers mobilized to support the response | | | | | | | | | | | | | | | | |
| | Activities planned | Month | 1 | 2 | 3 | 4 | 5 | 6 | 7 | 8 | 9 | 10 | 11 | 12 | 13 | 14 | 15 | 16 |
| AP001 | Based on risk-information, ensure that PRC staff and volunteers are mobilized; and on standby for immediate response in support of communities most likely to be affected | | x | | | | | | | | | | | | | | | |
| AP001 | Based on risk-information, mobilize equipment to areas most likely to be affected | | x | | | | | | | | | | | | | | | |
| AP001 | Based on risk-information, mobilize essential household items and emergency shelter assistance to areas most likely to be affected | | x | | | | | | | | | | | | | | | |
| AP001 | Support government and other stakeholders with pre-emptive evacuations of at-risk communities | | x | | | | | | | | | | | | | | | |

Strategies for Implementation

Requirements (CHF): 3,774

| P&B Output Code | Outcome S2.1: Effective and coordinated international disaster response is ensured | Effective and coordinated international disaster response ensured | | | | | | | | | | | | | | | | |
|-----------------|---|---|---|---|---|---|---|---|---|---|---|----|----|----|----|----|----|----|
| | Output S2.1.1: Effective response preparedness and NS surge capacity mechanism is maintained | 1 rapid response personnel support the operation | | | | | | | | | | | | | | | | |
| | Activities planned | week | 1 | 2 | 3 | 4 | 5 | 6 | 7 | 8 | 9 | 10 | 11 | 12 | 13 | 14 | 15 | 16 |
| AP046 | Initial operational start up support implemented by IFRC for the host national society and participating national societies and other common services | | x | x | x | x | | | | | | | | | | | | |
| AP046 | Deployment of rapid response personnel to support the response | | x | x | x | x | | | | | | | | | | | | |

| | | | | | | | | | | | | | | | | | | | |
|-----------------------|--|---|---|---|---|---|---|---|---|---|----|----|----|----|----|----|----|--|--|
| AP046 | Deployment of IFRC Shelter Cluster Focal Point (as part of RDANA) | x | x | x | x | | | | | | | | | | | | | | |
| P&B Output Code | Output S2.1.3: NS compliance with Principles and Rules for Humanitarian Assistance is improved | <i>DREF procedures are applied during the implementation of the operation</i> | | | | | | | | | | | | | | | | | |
| | Activities planned week | 1 | 2 | 3 | 4 | 5 | 6 | 7 | 8 | 9 | 10 | 11 | 12 | 13 | 14 | 15 | 16 | | |
| AP084 | Ensure that the Principles and Rules, Emergency Response Framework and DREF procedures are well understood and applied | x | x | x | x | | | | | | | | | | | | | | |
| P&B Output Code | Output S2.1.6: Coordinating role of the IFRC within the international humanitarian system is enhanced | <i># coordination meetings held with other stakeholders</i> | | | | | | | | | | | | | | | | | |
| | Activities planned Month | 1 | 2 | 3 | 4 | 5 | 6 | 7 | 8 | 9 | 10 | 11 | 12 | 13 | 14 | 15 | 16 | | |
| AP049 | IFRC CO supports PRC in coordination with other humanitarian actors and relevant clusters on a regular basis | x | x | x | x | | | | | | | | | | | | | | |
| P&B Output Code | Outcome S2.2: The complementarity and strengths of the Movement are enhanced | <i>Complementarity and strengths of the Movement enhanced</i> | | | | | | | | | | | | | | | | | |
| | Output S2.2.1: In the context of emergencies the IFRC, ICRC and NS enhance their operational reach and effectiveness through new means of coordination. | <i>Movement coordination is well-established</i> | | | | | | | | | | | | | | | | | |
| | Activities planned Month | 1 | 2 | 3 | 4 | 5 | 6 | 7 | 8 | 9 | 10 | 11 | 12 | 13 | 14 | 15 | 16 | | |
| AP051 | SMCC and Movement coordination is being observed | x | x | x | x | | | | | | | | | | | | | | |
| P&B Output Code | Outcome S3.1: The IFRC secretariat, together with National Societies uses their unique position to influence decisions at local, national and international levels that affect the most vulnerable. | <i>IFRC and NS are visible, trusted and effective advocates on humanitarian issues.</i> | | | | | | | | | | | | | | | | | |
| | Output S3.1.1: IFRC and NS are visible, trusted and effective advocates on humanitarian issues | <i>5 communications materials produced/published</i> | | | | | | | | | | | | | | | | | |
| | Activities planned week | 1 | 2 | 3 | 4 | 5 | 6 | 7 | 8 | 9 | 10 | 11 | 12 | 13 | 14 | 15 | 16 | | |
| AP053 | Communications work of PRC is supported by the IFRC Philippines CO and APRO | x | x | x | x | | | | | | | | | | | | | | |
| P&B Output Code | Outcome S4.1: The IFRC enhances its effectiveness, credibility and accountability | <i>Staff security is prioritized in all IFRC supported responses</i> | | | | | | | | | | | | | | | | | |
| | Output S4.1.4: Staff security is prioritised in all IFRC activities | <i># of security reports provided</i> | | | | | | | | | | | | | | | | | |
| | Activities planned week | 1 | 2 | 3 | 4 | 5 | 6 | 7 | 8 | 9 | 10 | 11 | 12 | 13 | 14 | 15 | 16 | | |
| AP066 | IFRC CO security focal person provides updates to PRC and coordinates with PNS and the ICRC | x | x | x | x | | | | | | | | | | | | | | |
| AP066 | All volunteers are insured and vaccinated | x | x | x | x | | | | | | | | | | | | | | |

Budget

International Federation of Red Cross and Red Crescent Societies

*all amounts in
Swiss Francs
(CHF)*

DREF OPERATION

MDRPH041 - PHILIPPINES - TROPICAL STORM GONI

29/10/2020

Budget by Resource

| Budget Group | Budget |
|---|---------------|
| Medical & First Aid | 4,248 |
| Teaching Materials | 189 |
| Relief items, Construction, Supplies | 4,437 |
| Transport & Vehicles Costs | 7,552 |
| Logistics, Transport & Storage | 7,552 |
| National Society Staff | 9,439 |
| Volunteers | 21,460 |
| Personnel | 31,843 |
| Travel | 944 |
| Office Costs | 850 |
| Communications | 991 |
| Financial Charges | 491 |
| General Expenditure | 4,219 |
| DIRECT COSTS | 48,050 |
| INDIRECT COSTS | 3,123 |
| TOTAL BUDGET | 51,174 |

Reference documents



Click for:

- [Information Bulletin](#)

For further information, specifically related to this operation please contact:**In Philippine Red Cross**

- Elizabeth Zavalla, acting secretary general; phone: +63 2 790 2300; email: elizabeth.zavalla@redcross.org
- Leonardo Ebajo, director for disaster management services; email: leonardo.ebajo@redcross.org.ph

In IFRC Philippines Country Office

- Robert Kaufman, head of country office; phone: +63 998 585 0794, email: robbert.kaufman@ifrc.org
- Patrick Elliott, operations and programme manager; phone: +63 998 961 2140; email: patrick.elliott@ifrc.org
- Radhika Fernando, interim operations manager; phone: +63 998 960 6284; email: radhika.fernando@ifrc.org

In IFRC Regional Office for Asia Pacific, Kuala Lumpur

- Gwendolyn Pang, deputy regional director; email: Gwendolyn.pang@ifrc.org
- Necephor Mghendi, head of DCC unit; email: necephor.mghendi@ifrc.org
- Vinod Muniandy, operations coordinator; email: nurhayati.ahmad@ifrc.org
- Siokkun Jang, logistics manager, regional logistics unit; email: siokkun.jang@ifrc.org
- Antony Balmain, regional communications manager; email: antony.balmain@ifrc.org

In IFRC Geneva

- Christina Duschl, senior officer, operations coordination; email: christina.duschl@ifrc.org
- Karla Morizzo, senior DREF officer; email: karla.morizzo@ifrc.org
- Eszter Matyeka, senior officer, DREF; email: eszter.matyeka@ifrc.org

For IFRC Resource Mobilization and Pledges support

- **In IFRC Asia Pacific Regional Office:** Alice Ho, partnership in emergencies coordinator; email: partnershipsEA.AP@ifrc.org

For Performance and Accountability support (planning, monitoring, evaluation and reporting enquiries):

- **In IFRC Asia Pacific Regional Office:** Siew Hui Liew, PMER manager; email: siewhui.liew@ifrc.org

How we work

All IFRC assistance seeks to adhere to the **Code of Conduct** for the International Red Cross and Red Crescent Movement and Non-Governmental Organizations (NGO's) in Disaster Relief and the **Humanitarian Charter and Minimum Standards in Humanitarian Response (Sphere)** in delivering assistance to the most vulnerable. The IFRC's vision is to inspire, **encourage, facilitate and promote at all times all forms of humanitarian activities** by National Societies, with a view to **preventing and alleviating human suffering**, and thereby contributing to the maintenance and promotion of human dignity and peace in the world.

The IFRC's work is guided by Strategy 2020 which puts forward three strategic aims:



Save lives,
protect livelihoods,
and strengthen recovery
from disaster and crises.



Enable **healthy**
and **safe** living.



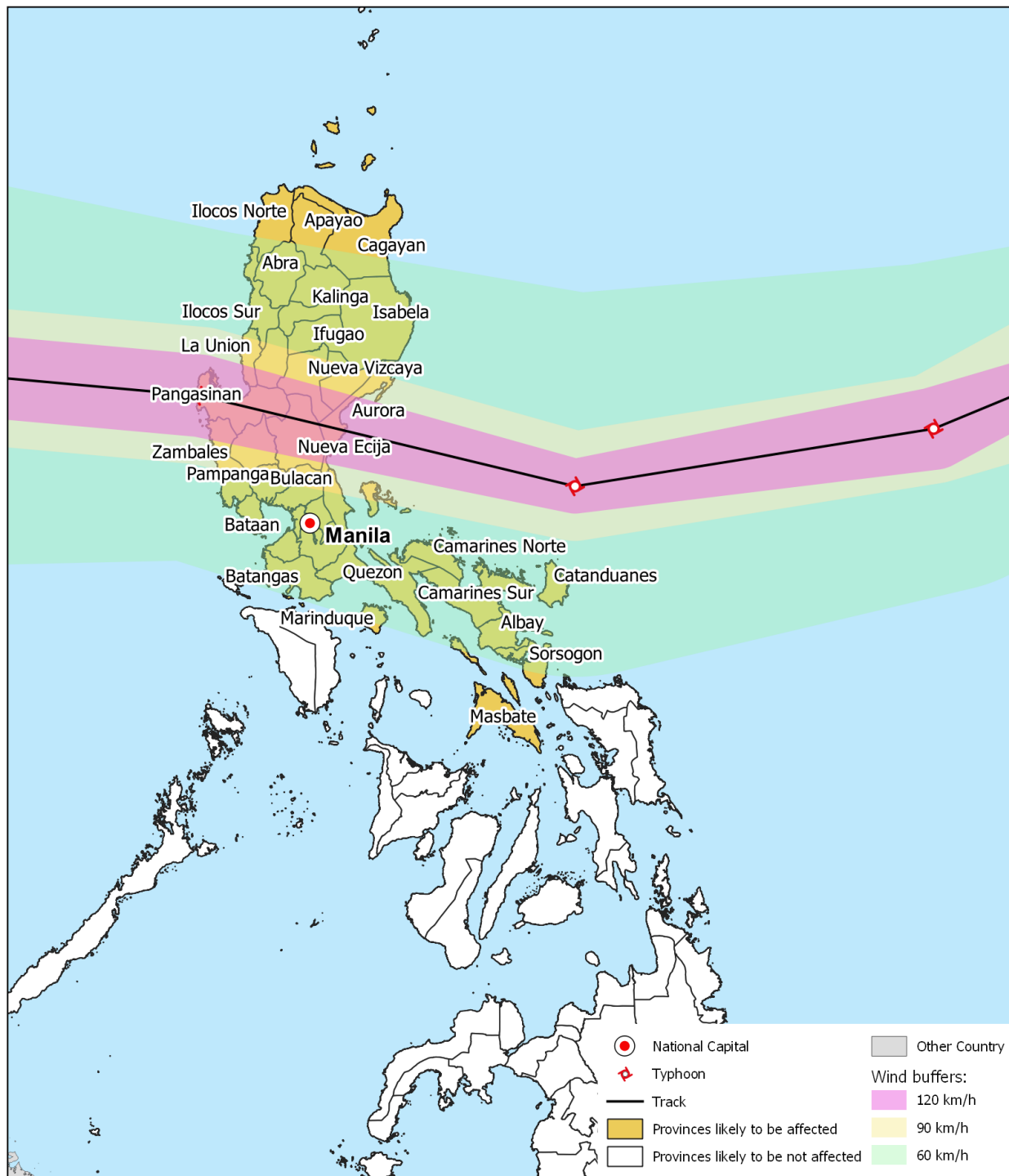
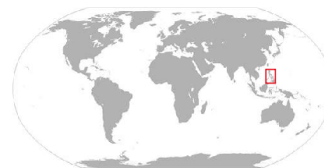
Promote social inclusion
and a culture of
non-violence and **peace**.

Map of areas expected to be affected by Tropical Storm Goni

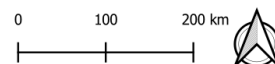


Philippines: Typhoon Cyclone GONI Emergency Plan of Action (EPOA)

29 October 2020



The maps used do not imply the expression of any opinion on the part of the International Federation of the Red Cross and Red Crescent Societies or National Societies concerning the legal status of territory or its authorities. Map data sources: OCHA, OSM Contributors, ICRC, IFRC, GDACS (29 Oct 2020)



Annex 1

Philippines: Region V (Bicol) Profile



Region V (Bicol) is situated at the southernmost tip of the Luzon landmass. It is prone to typhoons coming from the Western Pacific Ocean. The Region is bounded by Lamon Bay to the north, Pacific to the east and Sibuyan Sea and Ragay Gulf to the west. The northernmost province, Camarines Norte, is bordered to the west by Region IV-A, connecting the region to the rest of Luzon. The region is also home to 3 active volcanoes: Mount Bulusan in Sorsogon, Mount Iriga in Camarines Sur and Mount Mayon in Albay.

6 PROVINCES
7 CITIES
107 MUNICIPALITIES
3,471 BARANGAYS



POPULATION



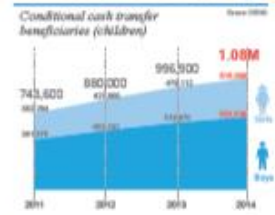
POVERTY



NATURAL DISASTERS



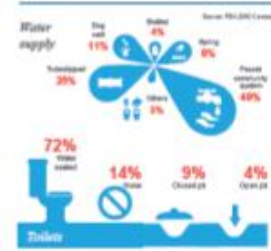
HUMAN DEVELOPMENT



NUTRITION



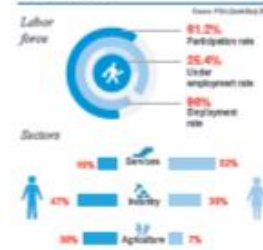
WASH



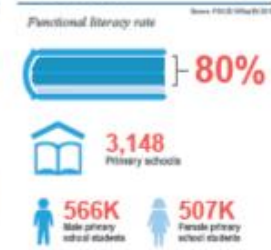
HEALTH



LIVELIHOOD



EDUCATION



SHELTER

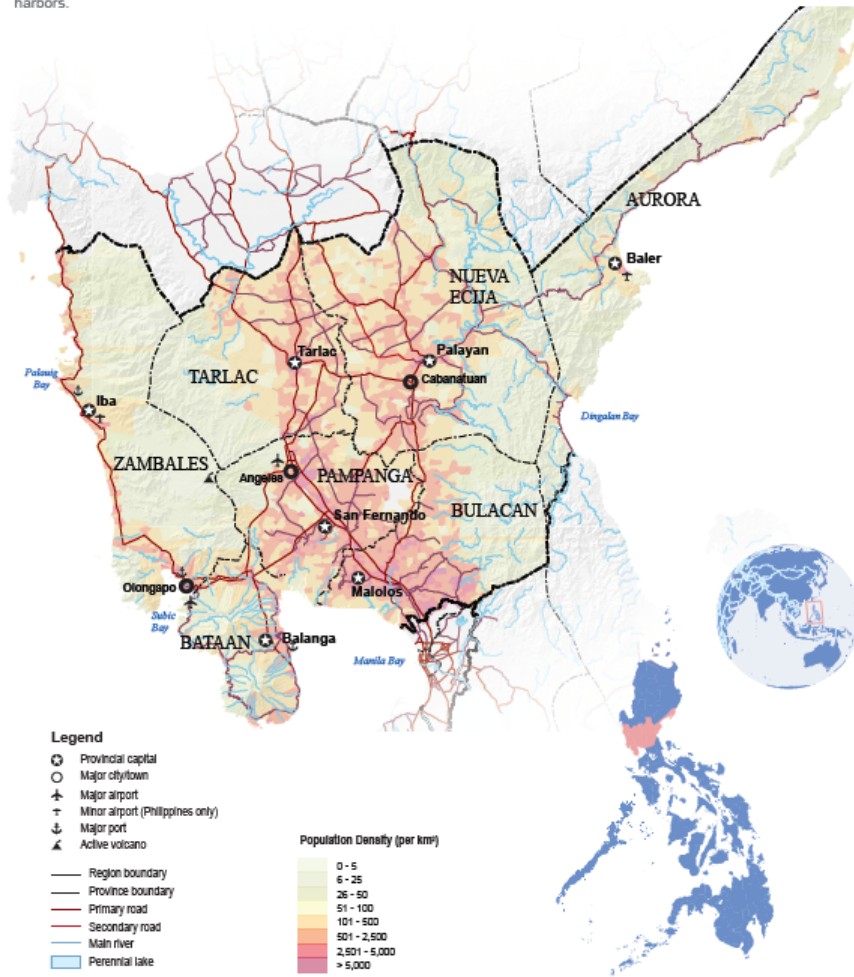


The incidence and names of icons and the descriptions used on this map do not imply official endorsement or acceptance by the United Nations.
 Creation date: January 2017. Sources: PSA, DENR (MHTS), DOK, OCHA/DRRMC, DRRD, PHRI, Project NDRR, NDRRRA, GDM, DTRM. Feedback: address@un.org, twitter@un.org, app@un.org, www.unocha.org/philippines, www.facebook.com/philippines.unocha, www.twitter.com/philippines.unocha

Philippines: Region III (Central Luzon) Profile

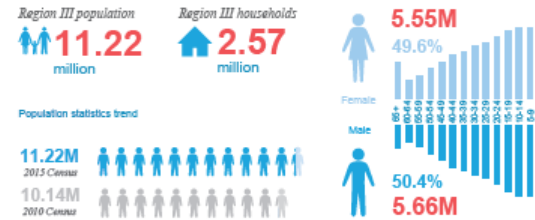


Region III (Central Luzon) occupies the central portion of the island of Luzon and is strategically located between Northern Luzon and the National Capital Region. It is bordered by Region II on the north; Region IV-A to the south; Dingalan Bay on the east and Palauig Bay and Subic Bay on the west. The region has a combination of towering mountains, extinct and active volcanoes, lush verdant farmlands and natural sea harbors.

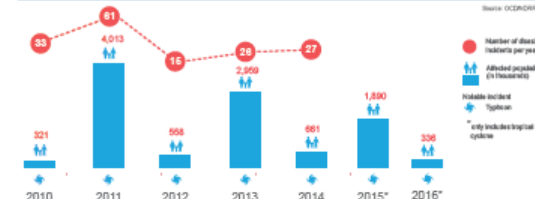


The boundaries and names shown and the designations used on this map do not imply official endorsement or acceptance by the United Nations.
 Creation date: January 2017 Sources: PSA, DSWD (NHTS), DOH, OCD/NDRRMC, DEPED, FNRI, Project NOAH, NAMRIA, GADM, SRTM

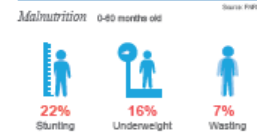
POPULATION



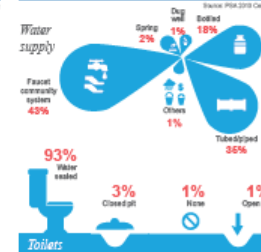
NATURAL DISASTERS



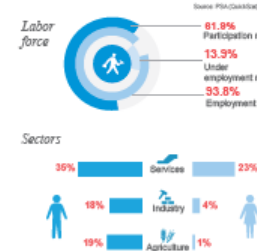
NUTRITION



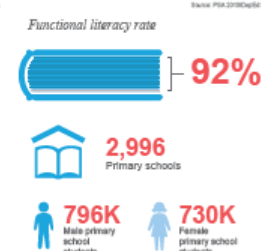
WASH



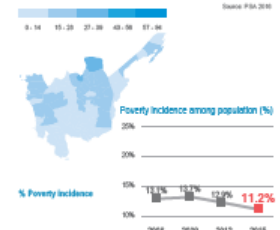
LIVELIHOOD



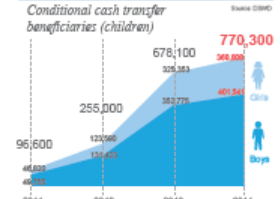
EDUCATION



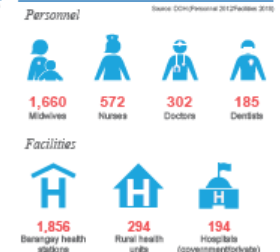
POVERTY



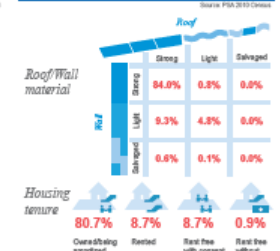
HUMAN DEVELOPMENT



HEALTH



SHELTER



The boundaries and names shown and the designations used on this map do not imply official endorsement or acceptance by the United Nations.
 Creation date: January 2017 Sources: PSA, DSWD (NHTS), DOH, OCD/NDRRMC, DEPED, FNRI, Project NOAH, NAMRIA, GADM, SRTM Feedback: address@un.org, mendosa1@un.org, sporto@un.org www.unocha.org/philippines www.rileweb.it philippines.humanitarianresponse.info