

## DREF Plan of Action

### Nicaragua: Hurricane Eta

<b>DREF Operation N°</b>	<b>MDRNI010</b>	<b>Glide No:</b> <a href="#">TC-2020-000218-NIC</a>	
<b>Date of issue:</b>	04 November 2020	<b>Implementation period:</b>	3 months
		<b>Expected date of completion:</b>	28 February 2021
<b>IFRC Category assigned to the disaster or crisis:</b> Yellow.			
<b>DREF allocated:</b> 439,928 Swiss francs (CHF)			
<b>People affected:</b>	6,000 families (30,000 people)	<b>People to be assisted:</b>	2,000 families (10,000 people)
<b>Affected municipalities:</b>	Bilwi, Jinotega, Yali, Wiwili, Ocotal. <sup>1</sup>	<b>Provinces / Target region:</b>	Bilwi, Jinotega, Yali, Wiwili, Ocotal.
<b>Presence of the host National Society(s) (N° of volunteers, staff, branches):</b> The Nicaraguan Red Cross Society (NRC) has 32 branches (17 at the municipal level), 1,520 volunteers assigned throughout the national territory for this emergency and 147 staff.			
<b>Red Cross and Red Crescent Movement partners involved in the operation:</b> Italian Red Cross, Spanish Red Cross, and International Committee of the Red Cross (ICRC).			
<b>Other partner organizations involved in the operation:</b> National Civil Protection System, National System for the Prevention, Mitigation and Attention to Disasters (SINAPRED), Municipal Civil Protection Commissions, United Nations system.			

[<Click here for the DREF budget and here for the contact information.>](#)

## A. Situation Analysis

### Disaster Description

Eta originated as a tropical wave in the eastern Caribbean Sea that developed into a tropical depression late on 31 October. Eta began to intensify, attaining hurricane status early on 2 November. Eta intensified into a major hurricane before reaching Category 4 strength on 3 November. It peaked at 150 mph (240 km/h) and 923 mbar (hPa; 27.26 inHg) as it slowed tremendously off Nicaragua's coast early on 3 November, making it the second most intense November hurricane on record. An eyewall replacement cycle then caused the storm to weaken some, but it remained at Category 4 strength as it made landfall south of



Photo: Nicaraguan Red Cross (NRC) volunteers supporting the evacuation of people. Source: NRC, 3 November 2020.

<sup>1</sup> As of 3 November.

Puerto Cabezas, Nicaragua, late on 3 November. Eta rapidly weakened to tropical storm status early on 4 November.<sup>2</sup>

Some 100,000 people live in Bilwi and adjacent communities along the Caribbean coast, mostly indigenous people scattered in villages have been exposed to the the hurricane, such as Tuapi, Krukira, Sandy Bay, Cabo Gracias a Dios, Prinzapolka, Wawabar, Karatá, Halower, Wauhta, Kamwatla and Walpalsiksa. The Nicaraguan government confirmed that about 6,000 families (almost 30,000 people) have been evacuated according to the National System for the Prevention, Mitigation and Attention of Disasters (SINAPRED).<sup>3</sup>

The National Center for Atmospheric, Oceanographic, and Seismic Studies (Cenaos) of Copeco reported that Hurricane Eta degraded early on 4 November to a Tropical Storm. The hurricane warning continues for sectors of the coast of Nicaragua, the border of Honduras/Nicaragua Sandy Bay and the surveillance of Tropical Storm of the northeast coast of Honduras from Punta Patuca, to the border Honduras/ Nicaragua, this means that conditions with winds over 175 km/h are probable in the areas in mention within the next 6 hours, with waves that could reach between 4 to 7 feet high. Intermittent rains are predicted, accompanied by isolated electrical activity, with accumulations of 120 and 140 millimeters, with maximums of 150 to 200 in the mountains.<sup>4</sup>

The Nicaraguan government declared a red (maximum) alert in the Northern Caribbean and a yellow (warning) alert in the northern departments of Jinotega, Nueva Segovia, and Chinandega, while maintaining a green (prevention) alert for the rest of the country.<sup>5</sup>

## Summary of Current Response

### Overview of Host National Society response actions

The Nicaraguan Red Cross (NRC) is a National Society with 86 years since its foundation and works as an auxiliary institution of the public authorities according to the legal framework. It has 32 branches, of which 17 are municipal in the 15 departments with currently 1,520 volunteers assigned throughout the national territory for this emergency.

In its strategic guidelines, the NRC includes actions to contribute to the most vulnerable people to strengthen their resilience levels through services and programmes focused on vulnerability reduction, risk reduction, and disaster relief.

In recent years, it has responded to various emergencies, such as Hurricane Felix in 2007 in the Northern Caribbean Region and Tropical Storm Nate in 2017. Both storms caused severe damage in various areas of the country and for which the Nicaraguan Red Cross mobilized the management of DREF funds, to provide support to the affected population. These experiences left the National Society strengthened and with experience in managing and addressing this type of disaster.

NRC took the following preventive actions before the arrival of Hurricane Eta:

- Green Alert and activation of all areas of the COE (Emergency Operations Center).
- Activation of Regional Monitoring Rooms at the National Level.
- Submission of Situation Reports in places that could be affected by the hurricane's direct impact (Puerto Cabezas, Jinotega, Ocotol, and Chinandega).
- Activation of the Local Contingency Plan in branches with Red and Yellow Alert.
- Update of Resources (tools, equipment, mapping of capacities)
- Participation in the meetings with the municipality actors to participate in the local response plan.
- Support in the evacuation of families
- Elaboration of the Response Plan in the context of Hurricane Eta
- Sending of Support Team for the Local Emergency Management (a General NIT, an NIT in Water and Sanitation, and a Logistics).
- Non-Food Items (NFIs) pre-positioned at the headquarters: hygiene kits, kitchen, blankets (for about 1,000 – 2,000 people).

<sup>2</sup> [NOAA. Hurricane Eta Public Advisory. 4PM 3 November 2020.](#)

<sup>3</sup> [La Prensa Nicaragua. En Vivo Huracán ETA. 3 November 2020.](#)

<sup>4</sup> [COPECO-Honduras. Actualización: Huracán Eta se degrada a Tormenta Tropical. 4 November 2020.](#)

<sup>5</sup> [SINAPRED. 2 November 2020.](#)

After the alert was issued at national level, the NRC coordinated with the Co-Direction of SINAPRED and the Director of the EOC, where the National Society's disposition to support the communities affected by the Hurricane was planned. The following actions were agreed:

- Activation of the Monitoring Centers and Monitoring Room at the national level.
- Implementation of the Global Plan by the EOC Commission team (EOC Director, Commission for Operations, Monitoring, and Finance).
- Coordination with partners of the movement to present the National Society global plan, activate the humanitarian network and see possible funding sources to implement it.
- The branches are implementing actions to identify capacities, support evacuations, and participate in shelters (Puerto Cabezas and El Rama).
- Planned to support government institutions that are coordinating the response with damage and needs assessment (DANA).

The National Society also issued a [Go Field Report](#) on 3 November.

### **Overview of the Red Cross and Red Crescent Movement's actions in the country**

IFRC currently is present in the country and provides financial support for a Preparedness for Effective Response project. Italian Red Cross and Spanish Red Cross have a presence in the country and help to implement strategic actions through technical and financial support. Italian Red Cross focuses on building institutional capacity in resource mobilization and risk management. Spanish Red Cross' support is centered on building the National Society's capacity in risk management, livelihoods, violence prevention, human rights-based approach, social inclusion, and psychosocial support (PSS).

The International Committee of the Red Cross (ICRC) is also present in the country, providing technical advice on specific issues such as Safer Access and Restoring Family Links. Synergy with the Government and its Ministries has been maintained and strengthened, mainly the Ministry for the National Disaster Prevention, Mitigation and Relief System, through participation in its sectoral commissions. Coordination is also maintained with the Ministry of Health and Ministry of the Interior and attached institutions.

### **Overview of the actions of other humanitarian actors**

SINAPRED took preventive actions to reduce and mitigate human loss by activating early warning mechanisms in Puerto Cabezas and its communities. They supported the evacuation of families and the provision of humanitarian aid (mattresses and food).

On 2 November, the World Food Programme (WFP) in coordination with SINAPRED<sup>6</sup> dispatched 72 metric tonnes of rice and 8 metric tonnes of vegetable oil to the Autonomous Region of the Northern Caribbean. UNICEF prepositioned 3,000 family hygiene kits, 3,000 water containers, 87 boxes of water disinfection tablets, and 50 chlorine test kits for water quality monitoring on standby for delivery to the Ministry of Health SINAPRED<sup>7</sup>.

### Coordination Mechanism

The National Society is participating in meetings with the national government, specifically with SINAPRED. The Nicaraguan Red Cross is carrying out coordination meetings with Movement partners, including Partner National Societies (PNS), IFRC, and ICRC, to discuss new developments and coordinate actions.

Coordination calls have been set up with the Movement partners and updates related to context and potential impact were shared. This venue was a space to clarify queries from the Movement partners and pre identify potential synergies.

### **Needs analysis, selection of objectives, scenario planning and risk assessment**

The following immediate needs have been identified based on the early assessments carried out in the field and secondary data:

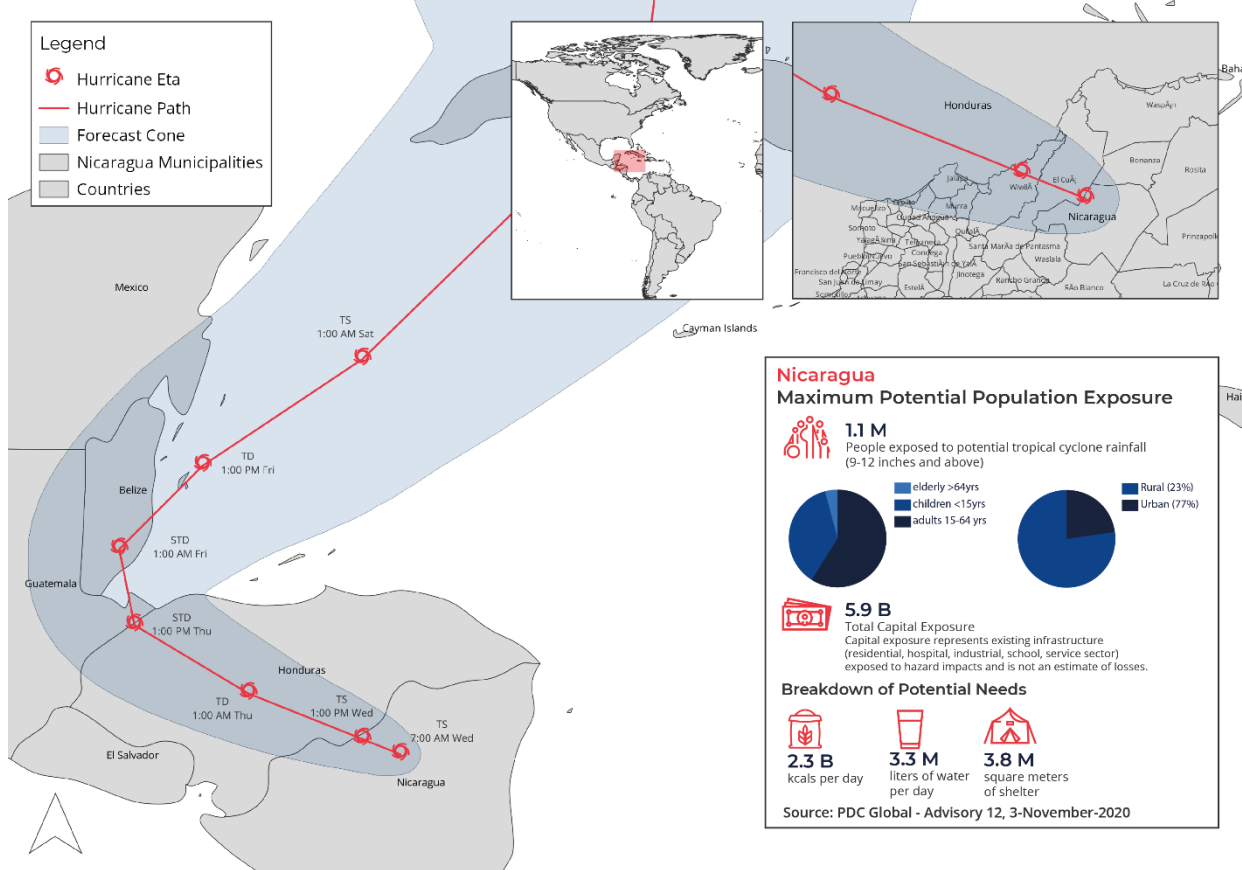
---

<sup>6</sup> [WFP. WFP positions food supplies and deploys staff in Nicaragua's Northern Caribbean Region as hurricane Eta makes landfall. 3 November 2020.](#)

<sup>7</sup> [UNICEF. Nearly half a million children in Nicaragua at risk from Hurricane Eta. 3 November 2020.](#)

**+IFRC Nicaragua: Hurricane Eta**  
**Path, Forecast Cone, Municipalities at Risk and**  
**Estimated Rainfall Impact Analysis as of 4-November-2020**

The maps used do not imply the expression of any opinion on the part of the International Federation of Red Cross and Red Crescent Societies or National Societies concerning the legal status of a territory or of its authorities.  
 Data sources: IFRC, PDC, NOAA, OCHA FISS.  
 Produced by IM Americas.



**Shelter:**

As of 3 November, SINAPRED registered almost 6,000 families in different collective centers (about 30,000 people) in houses of friends and family members with safer structures. The rest are using the collective centers that the government had prepared, churches, and other infrastructures that have served as support for the families.<sup>8</sup>

As reported by local media, there are infrastructure damages such as falling poles, trees, power lines flooding in housing areas and detachment of roof zinc sheets in Bilwi, where 53 collective centers had received and registered 1,626 families until the morning of 3 November<sup>9</sup>.

This type of partial damages in houses will increase with the trajectory of the hurricane.

As part of the preventive measures, the population has traditionally secured their houses' roofs to prevent them from being blown away.

The Nicaraguan Red Cross is assessing further damages to houses and infrastructure. The level of impact is still to be confirmed.

**Population of Puerto Cabezas evacuated to collective centers in Bilwi – Puerto Cabezas**



Photo: Damage caused in New Jerusalem in Bilwi Source: La Prensa Nicaragua, 3 November 2020.

<sup>8</sup> SINAPRED. *Eta categoría 4 con vientos de 130k/h toca tierra en Bilwi. 3 November 2020.*

<sup>9</sup> La Prensa Nicaragua. *30 mil personas refugiadas por la llegada del huracan Eta a Nicaragua 3 November.*

Affected Families	People Affected	Sex of Affected People		Groups						
		F	M	Adults	Boys	Girls	Pregnant Women	Chronically Sick	People with Disabilities	Older Adults
1,626	9,298	5,139	4,159	5,844	1,557	1,897	84	107	56	364

Source: SINAPRED. Date: 3 November 2020.

The collective centers need support to ensure minimum comfort and to establish proper hygiene conditions to comply with protection and physical distancing measures due to COVID-19. The government has started the distribution of mattresses. There is also the need for basic items to meet immediate needs, such as blankets, personal hygiene items, etc.

### Health:

The affected population will likely need health support. Prevention of some conditions common in these crises needs to be optimized especially in the COVID-19 context. First aid will be provided during rescue and evacuations. People and families in need of temporal shelter must mitigate the potential risk for those health conditions that appear during flooding events such as diarrheal, respiratory diseases, skin conditions, and the health needs of people with chronic diseases. The proliferation of respiratory conditions could contribute to the health system's overloading as it would be needed to differentiate with COVID-19 diagnosis. Pregnant women, children under 5 years old, and people with disabilities are especially vulnerable. There are large psychosocial needs of the whole sheltered population associated with the stressful situation experienced, loss of family members' and affected livelihoods.

As mentioned before, in terms of COVID-19, Nicaragua reported 4,424 cases, 156 deaths, being categorized as a country under the community transmission classification<sup>10</sup>. Prevention measures need to be implemented in the collective centers to reduce the contagious risks such as physical distance, delivery of PPE, hygiene promotion activities and dissemination of messages. Provision of basic health services with first aid, Psychological First Aid, psychosocial support, and establishing a referral pathway to the health national services for the most complex cases will be crucial. It is expected that during the second week after the flooding, vectors will proliferate due to the accumulation of stagnant water and drowned animals, as well as the flooding of latrines and the contamination of wells, situations that can increase the risk of the population to be exposed to water-borne and vector-borne diseases especially considering that Dengue is endemic in Nicaragua and, cholera outbreak was reported in the past years.

### Livelihoods and essentials need:

Nicaragua is currently going through the economic effects of the COVID-19 outbreak mobility restrictions and neighboring countries' lockdowns. Self-quarantine measures adopted by the population also contributed to the contraction of economic activity in which many livelihoods and businesses have been affected by the outbreak. For example, the labor participation rate fell 4% in the second quarter of 2020<sup>11</sup>.

As mentioned above, a significant number of families are in collective centers, 1,626 in Bilwi. Damage caused to houses' roofs has been reported due to strong winds, the detachment of zinc sheets, falling trees, and electric poles. Only 37.8 per cent of households in Bilwi have access to drinking water<sup>12</sup>. This, added to the damage to the electrical system and others that are predicted to leave the hurricane's passage, allows us to identify basic food needs, access to safe water, clothing, and hygiene items.

The full magnitude of the damage to small local businesses, agricultural, tourism, and service activities cannot yet be determined. It is estimated that they will be significant, considering the current economic crisis in the region. Damage to small businesses' infrastructure, agricultural production activities, and access routes to markets is basically expected, which will make it difficult to restart these activities.

<sup>10</sup> [WHO - Nicaragua](#).

<sup>11</sup> [Central America Data. Nicaragua: Empleo formal cae 4%. 19 October 2020](#).

<sup>12</sup> [Banco Central de Nicaragua. Cartografía Figital y Censo de Edificación. Cabecera Municipal de Bilwi. June 2017](#).

Families will most probably lack the resources to buy basic products in the market. This could lead to negative coping strategies, such as reducing diet or selling work tools.

Several families have been suffering from the depletion of their income and savings in recent months due to the social and economic impact of COVID-19. The remittances level has suffered a significant decrease in the first quarter of the year (-9.1%), recovering in the second semester (5.6%). Despite this, it is expected that the effect of the crisis and the impact of the hurricane in the region will affect remittances in the remainder of the year (almost 20% of them come from neighbouring countries)<sup>13</sup>.

### Water Sanitation and Hygiene:

There is a need to assess water quality for human consumption and preventive health actions for populations returning to their homes and those living in collective centers. This will avoid outbreaks and epidemics caused by the post-flood conditions. Distribution of safe water is planned in the affected communities.

### Migration:

In the case of communication failures, the Nicaraguan Red Cross will evaluate the need to re-establish contact between family members. Although there is no information on the migration sector's needs, the potential routes and the impact that the hurricane may generate in the main affected areas in terms of displacement will be evaluated.

### Estimated disaggregation of the target population

It is expected that under this operation, an estimated target of 10,000 (2,000 families) will be reached.

The targeted families within the served/affected population will be selected based on different criteria, such as:

- Level of affectation (housing, livelihoods, health, etc.)
- Absence of assistance received from other entities.
- Specifically, vulnerable population (children, pregnant women, single-parent family, older adults, people with disabilities, etc.)

Area of Focus	# of people targeted	Comments
Shelter	10,000	Household items distributions
Livelihoods	-	Feasibility study? and market assessment
Health	2,000	Health promotion sessions
WASH	2,000	Water distribution Services
PGI	500	PGI training for volunteers and staff

The target population has been calculated considering the highest number of people served by the areas of focus to avoid double counting, as several families will be reached with various services. The water distribution is planned for two communities where their water system has been damaged.

The difference between the number of people to be targeted is based on different needs and different affectation levels by Hurricane Eta's impact.

Category	Estimated % of target group
Children (<15 yrs)	41%

<sup>13</sup> [Banco Central de Nicaragua. Informe Trimestral de Remesas. Second quarter 2020.](#)

Adults (15-64 yrs)	56%
Elderly (>65 yrs)	3%

## Scenario-based planning

Scenario	Humanitarian consequence	Potential Response
Scenario A Best Case Scenario	The consequences of the hurricane are minimal, and only some communities are impacted. Roads remain open, and livelihoods are not interrupted.	The population at risk areas will be supported through evacuations to shelters. There are minimal delays in the procurement and importation of PPEs and other household items, considering that they are pre-positioned.
Scenario B Likely scenario	Given the high rainy season in the region, it is not ruled out that new floods in the area and that the affected families again suffer the onslaught of the weather and the hurricane season in the region.	Continuous monitoring of water levels in flood prone areas. Deployment of water and sanitation team to assist on water production and distribution in most affected communities. Some delays in procurement and importation of PPE's and NFIs for water and sanitation and hygiene promotion assistance.
Scenario C Worst case scenario	Infrastructure and means of transportation are severely affected, and communities cannot be reached.	Articulation with the national government to estimate the contingency plans to be implemented.

## Operational Risk Assessment

### Hurricane Season

Given the season of high rain in the region, it is not ruled out that new floods will occur in the area and that the affected families will once again suffer the onslaught of the weather and the hurricane season in the region. An additional factor is the vulnerability of basic infrastructure exposed to recurrent hydrometeorological factors such as the roads, basic public services, and diseases' appearance.

### COVID-19 Pandemic

This DREF operation and its operational strategy considers the risks related to the current COVID-19 pandemic and is aligned with the IFRC global emergency appeal that supports National Societies to deliver assistance and support to communities affected or at risk of being affected by the COVID-19 pandemic. As of 27 October, a total of 4,424 confirmed cases, 80 active cases, 4,188 recovered cases of COVID-19 have been registered in country, with 156 deaths according to the Ministry of Health<sup>14</sup>.

National Society response to COVID-19 is supported through the [IFRC global appeal](#), which is facilitating and supporting them to maintain critical service provision, while adapting to COVID-19. This DREF operation is aligned with and will contribute to the current global strategy and regional Emergency Plan of Action for COVID-19 developed by the IFRC Americas Regional Office, in coordination with global and regional partners. This means that the National Society will ensure, even as it responds to the current dengue outbreak, COVID-19 prevention measures are adhered to, in line with regional plan of action and its national COVID-19 country plan.

IFRC continues to assess how emergency operations in response to disasters and crisis should adapt to this crisis and provide necessary guidance to its membership on the same. The National Society will keep monitoring the situation closely and revise the plan accordingly if needed, taking into consideration the evolving COVID-19 situation and the operational risks that might develop, including operational challenges related to access to the affected population, availability of items, procurement issues, and movement of National Society volunteers and staff. For more information please consult the COVID-19 operation page on the [IFRC Go platform](#).

## B. Operational Strategy

<sup>14</sup> [WHO - Nicaragua](#).

## **General Operational Objective**

The Nicaraguan Red Cross will contribute to the national response to the Hurricane Eta in **Bilwi, Jinotega, Yali, Wiwili, Ocotal departments to support 2,000 families affected (10,000 people)** with their emergency needs in the areas of Shelter, Livelihoods, Health, WASH, and Protection, Gender and Inclusion.

The proposed strategy is based on maintaining the coordination previously established with SINAPRED from the central base to the departments where the intervention will be implemented to obtain data and official reports that will allow for a continuous monitoring and evaluation system that effectively provides the identification of particular needs. One of the health system's strengths is that it has an updated population census, which is disaggregated by gender, diversity, disability, and age group, thus ensuring comprehensive actions. To ensure national and local government actors' involvement, a letter of agreement may be signed to strengthen the parties' commitments.

Community assemblies will be established where the action plan results can be fed back and evaluated. The population can empower them and make decisions to mitigate any possible effects in the project's life cycle. This will generate a good practice of accountability for the affected people.

These actions will be implemented with the accompaniment of volunteers who have specialties on: National Intervention Teams (ENI), in Emergency Health and Epidemic Control, community-based health and first aid (CBHFA), Water and Sanitation, Participatory Transformation for Health, and Hygiene and Sanitation (PHAST) methodology.

Some strategies to support this operation include:

### **Human Resources:**

The National Society has 1,520 volunteers trained in various areas and issues related to the response it is providing and will be available to support the operation. For the implementation of this Emergency Plan, it is necessary to hire a team led by the Project Coordinator, one Planning, Monitoring, Evaluation and Reporting (PMER) Officer, two Field Staff, one Administrative Officer and a Procurement Officer supported by volunteers for the implementation of the actions. The hiring of this staff assumes that the National Society is operating at full capacity and needs to increase its capacity to implement the response actions planned.

### **Logistics:**

The processes of purchasing goods and services, transport, and storage will be centralized at the Nicaraguan Red Cross, with the Logistics Unit's support, ready and prepared for the quick delivery of household items. This work will follow existing procedures and guidelines, which give conformity to the minimum requirements of the IFRC. Distribution is coordinated with the relevant institutions if necessary.

Logistics Unit is gathering information and coordinating the possibility to mobilize stocks available in the neighbouring National Societies', as a contingency.

### **Communication:**

The Communications Unit will provide coverage and dissemination for the main actions in operation, preparing digital content for dissemination in media outlets such as: web, social networks, internal bulletins, audio-visual material, etc.

### **Community Engagement and Accountability (CEA):**

The Nicaraguan Red Cross uses the CEA approach in its projects and programs and emergencies. The CEA approach is crosscutting and used in activities implemented as part of the different intervention strategies. It seeks to integrate communication and participation for the affected and targeted communities. The activities proposed as part of the CEA approach include: Share timely information with communities to support community preparedness and primary response actions, promote physical and mental health during and after the flooding emergency through social networks, small group sessions, newsletters other actions. Similarly, establish a mechanism for complaints, consultations, and recommendations during the emergency.

CEA support will be provided to other areas such as Shelter, Health, WASH, Livelihoods, PGI, and in the case of Cash interventions, the CEA toolbox elements for cash programmes will be used.

### **Information Technology:**

The operation requires the hiring of telephone services for efficient communication between members of the Technical Implementation Team. The national context for the COVID-19 emergency has led to an increase in the use of virtual conference platforms, such as Zoom, Skype, etc., as well as data hosting for remote work. These tools are vital for work and communication with the target groups, given the mobility restrictions and biosecurity measures that have been established and govern everyday life.

### **Security:**

Without exception, the Nicaraguan Red Cross assesses potential security risks to the institution members before its works with local organizations. The Nicaraguan Red Cross has an Institutional Security Unit that permanently monitors the communities' security situation where it works and intervenes.

### **Planning, Monitoring, Evaluation and Reporting (PMER):**

As part of the PMER strategy, a technical staff member will advise and facilitate these processes. Actions previously identified include the preparation of the indicator monitoring matrix that will be used to monitor the progress made in achieving the goals. Rapid studies will also be conducted to identify some target groups' perceptions regarding implementing the CEA approach. The results of past lessons learned will also be presented to the implementation team, and preparation of the corresponding reports will be monitored.

## C. Detailed Operational Plan



### Shelter

**People targeted: 10,000**

Males: 5,000

Females: 5,000

**Requirement (CHF): 182,535**

**Needs analysis:** As a response to Hurricane Eta, preventive evacuations were conducted due to the high impact of winds in the North Caribbean Coast, including Triangulo Minero. The families have been taken to collective centers, which has generated the need to ensure that evacuees have basic items to meet their immediate needs.

All the evacuees, including families that have taken refuge in relatives' homes because they had the security and space, will need to repair hurricane damage to their homes to return. Families whose homes have partial damage, especially in their roofs, will need assistance to cover the affected areas until they begin the repair process.

**Population to be assisted:** This intervention will support a total of 2,000 families (10,000 people) in collective centers and affected families located in the municipalities of Bilwi, Jinotega, Yali, Wiwili, Ocotal by providing kitchen sets, tarpaulins, shelter kits and blankets to help meet some of their needs. The selection of this population is based on damage assessments and needs analyses. It may also include the distribution of Shelter kits to support repairs of the affected houses. The Nicaraguan Red Cross is part of the National Civil Protection System. Through this mechanism, emergency assistance is prioritized and coordinated to avoid the duplication of efforts.

**Standards / Reference points:** The proposed actions meet the Sphere standards.

P&B Output Code	Shelter Outcome 1: Communities in disaster and crisis affected areas restore and strengthen their safety, well-being and long-term resilience through shelter and settlement solutions.												
	Housing Output 1.1: Affected families are provided with shelter, settlement, or basic household items.												
Planned Activities	# households provided with emergency shelter and settlement assistance. Target: 2,000												
	# households provided with household items (with at least one item). Target: 2,000												
	Week / Month	1	2	3	4	5	6	7	8	9	10	11	12
AP005	Assessment of housing needs, capacities, and gaps												

AP005	Identification of cases and verification of beneficiaries in different target groups (including integrated factors such as gender, diversity, and disability in the response)												
AP005	Coordination with government and other stakeholders												
AP005	Procurement and distribution of 4,000 blankets (2 per family)												
AP005	Procurement and distribution of 2,000 kitchen sets												
AP005	Procurement and distribution of 2,000 tarpaulins <sup>15</sup>												
AP005	Procurement and distribution of 2,000 shelter Kits												
AP005	Monitoring the use of housing and household items												



### Livelihoods

**People targeted: TBD**

Males: TBD

Females: TBD

**Requirement (CHF): 2,876**

**Needs analysis:** The impact of Hurricane Eta will most probably interrupt people's income-generating activities and affect their means of production and well-being because of the damage caused to the infrastructure of basic services, people's houses, businesses, local markets, roads. A cash feasibility study and market assessment will be conducted to evaluate the possibility of cash delivery activities.

**Standards / Reference points:** Provide humanitarian assistance to the affected population, considering the Minimum Standards set out in the Sphere Manual. The IFRC's Fundamental Principles and mandate; the IFRC's Strategic Framework on Disability Inclusion; the IFRC's Minimum Standard Commitments to Gender and Diversity in Emergencies; the Code of Conduct; and other documents related to the Movement and other organizations that provide quality humanitarian assistance in a dignified manner.

P&B Output Code	<b>Livelihoods and basic needs Outcome 1: Communities, especially in disaster and crisis affected areas, restore and strengthen their livelihoods</b>	One Cash feasibility study and Rapid Market Assessment done.											
	<b>Livelihood and basic needs Output 1.5: The households received cash and voucher assistance to meet basic needs</b>												
	Planned Activities	1	2	3	4	5	6	7	8	9	10	11	12
AP081	Cash feasibility study and Rapid Market Assessment												

<sup>15</sup> For replenishment to the NS.

AP081	Coordination with government and other stakeholders													
AP081	Design and roll out of a CEA plan for awareness, involvement and feedback mechanisms.													



**Health**

**People targeted: 2,000**

Men: 1,000

Women: 1,000

**Request (CHF): 69,811**

**Needs analysis:** In emergencies such as those generated by hurricanes, people are exposed to various risks that can compromise their health or cause loss of life. As a preventive measure and to avoid the loss of human lives, people are evacuated to places of refugees where they can remain safe during the event. Also, people might need to be sheltered if they have lost their homes or structures that have resulted in temporally damaged. For this reason, their basic health and psychosocial needs must be attended to, especially those of the most vulnerable. Individuals and communities will require emotional support to cope with the situation of stress and the loss of loved ones or their homes. Additionally, the intervention is framed in the context of COVID-19, and it requires that protocols be followed to minimize the risk of transmission both in shelters and the most affected communities. It must also be taken into account that health services can be interrupted and destabilized, either by damage to their structures, by the suspension of essential services such as electricity and water that impede their normal operation and regular care of the population, or because the staff must be mobilized to other areas, which hinders access to health. After floods, a series of epidemiological events are expected, such as outbreaks of diseases transmitted by water and vectors; therefore, public health actions should be implemented in the communities to reduce this risk.

**Population to be assisted:** This operation is expected to reach around 2,000 individuals split into five different departments. The priority will be given to communities where there has been major damage to flooded land or housing.

**Standards / Reference points:** Standards and reference points from the program: IASC Guidelines on Mental Health and Psychosocial Support in Emergency Settings; Sphere Manual. The humanitarian assistance proposed by Nicaragua Red Cross has been coordinated with the local authorities at the municipal level to ensure proper coordination and planning and, at the same time, alignment with government and humanitarian actors.

P&B Output Code	<b>Health Outcome 1: Immediate health risks for affected populations are reduced.</b>	# of people reached with health and hygiene services Target: 2,000												
	<b>Health Output 1.1: The health situation and immediate risks are assessed in coordination with authorities.</b>	One assessment conducted and reported												
	Planned Activities Week / Month	1	2	3	4	5	6	7	8	9	10	11	12	
AP011	In coordination with health authorities, conduct detailed assessments to identify health needs, the number/type/location of damaged health facilities and/or deficiencies in medical services in the target communities													

AP011	Continuous monitoring and coordination with authorities and other organizations													
P&B Output Code	<b>Health Outcome 2: Immediate health risks for affected populations are reduced through improved access to medical treatment.</b>	# people reached with primary health services Target: 2,000												
	<b>Health Output 2.1: Increased access to medical care and emergency health care for the target population and communities.</b>	# of PPE kits distributed to volunteers Target: 1,500												
	Planned Activities Week / Month	1	2	3	4	5	6	7	8	9	10	11	12	
AP011	Replenishment of First Aid Kits for 5 branches													
P&B Output Code	<b>Health Output 4.6: Improved knowledge of public health issues.</b>	# people reached by health promotion campaigns, and disease prevention and control activities. Target: 2,000  # volunteers trained in ECV Target: 200  # people reached with PPE Target: 10,000 people (2,000 families)												
	Planned Activities Week / Month	1	2	3	4	5	6	7	8	9	10	11	12	
AP011	CBHFA volunteers are identified and activated for emergency response.													
AP011	Refresher training on Epidemic Control for Volunteers (ECV)													
AP011	Implementation and monitoring of ECV activities													
AP011	Health and hygiene promotion campaigns are implemented on the prevention and control of common communicable diseases such as malaria, acute watery diarrhoea, bloody diarrhoea, dermatitis and other outbreaks that may occur during emergencies in addition to reinforce of COVID-19 PHSM.													
AP011	Reproduce and distribute information, education and communication materials on community-based disease prevention, epidemic preparedness, health promotion and psychosocial well-being supplemented by support from the media.													
AP011	Procurement and distribution of PPE among community members, especially among those in temporal shelter (for 2,000 families)													
P&B Output Code	<b>Health Outcome 6: The psychosocial impact of the emergency decreases.</b>	# of people reached with psychosocial support Target: 250												
	<b>Health Output 6.1: Psychosocial support provided to the target population as well as to RC volunteers and staff.</b>	# of people that receive psychosocial support Target: 250  # of volunteers and staff reached with psychosocial support actions Target: 100												

	Planned Activities Week / Month	# of PSS kits delivered Target: 2,000											
		1	2	3	4	5	6	7	8	9	10	11	12
AP023	Conduct a need assessment: determine PSS needs and problems and assess capacity to address the problem												
AP023	Providing PFA to people affected in shelters and in affected communities												
AP023	Providing PFA to staff and volunteers												
AP023	Establish referral pathways to MoH services for the most complex cases												
AP023	Procurement and distribution 2,000 PSS kits for adults and children in the shelters												
AP023	Reproduce and distribute information, education, and communication materials on community-based psychosocial support to promote well-being, cope with loss and grief and promote resilience in shelter and community level												



## Water, Sanitation and Hygiene Promotion

**People targeted: 2,000**

Men: 1,000

Women: 1,000

**Request (CHF): 101,143**

**Needs analysis:** In similar emergencies, water, sanitation, and hygiene needs are extensive throughout the affected areas where groundwater supplies have been impacted by storm water intrusion. Other contaminants and affected populations have been affected by water scarcity. The risk of water-related diseases could remain high in the weeks following the disaster. Lack of sanitation and hygiene is likely to be a driver of these diseases. It is estimated that 6-8 weeks following the hurricane risk for vector-borne diseases will be high.

**Population to be assisted:** For this operation, priority will be given to assisting people affected in Bilwi, Jinotega, Yali, Wiwili, and Ocotal.

**Standards / Reference points:** The proposed WASH activities follow the National standards of Nicaragua and Sphere standards regarding the water distribution and the content of the IFRC family Hygiene kits.

<b>P&amp;B Output Code</b>	<b>WASH Outcome 1: Immediate risk reduction of water-borne and water-related diseases in selected communities.</b>	<i># people reached with water-related services Target: 2,000 people</i>
----------------------------	--	--

	<b>WASH Output 1.1: Target population is provided with daily access to safe water that meets Sphere and WHO standards for quantity and quality.</b>	<i># people benefit from water that is fit for human consumption Target: 2,000 people</i>											
	Planned Activities Week / Month	1	2	3	4	5	6	7	8	9	10	11	12
AP026	Provide safe drinking water to 2,000 people in selected communities												
AP026	Conduct a needs assessment of the Water, Sanitation and Hygiene issues and assess capacity to address the problem												
AP026	Continuously monitor the water, sanitation, and hygiene situation in targeted communities												
AP026	Coordinate with other WASH actors on target group needs and appropriate response.												
<b>P&amp;B Output Code</b>	<b>WASH Output 1.2: Hygiene promotion activities that meet Sphere standards in terms of identification and use of hygiene items provided to the target population.</b>	<i>One WASH assessment</i>  <i># volunteers trained on hygiene promotion Target: 200</i>  <i># people reached by hygiene promotion campaigns. Target: 2,000</i>  <i># people trained in sanitation and waste management Target: 2,000</i>											
	Planned Activities Week / Month	1	2	3	4	5	6	7	8	9	10	11	12
AP030	Select target groups, key messages, and methods of communication with beneficiaries (mass media and interpersonal communication).												
AP030	Community training of sanitation and waste management.												
<b>P&amp;B Output Code</b>	<b>WASH Output 1.4: Hygiene related assets (NFIs) that meet Sphere standards are provided to the target population and training is provided on how to use these assets.</b>	<i># personal hygiene kits delivered to target population. Target: 2,000</i>											
	Planned Activities Week / Month	1	2	3	4	5	6	7	8	9	10	11	12
AP030	Procurement and distribution of 2,000 personal hygiene kits												



## Protection, Gender, and Inclusion

**People targeted: 500**

Men: 375

Women: 125

**Request (CHF): 7,705**

**Needs analysis:** During emergencies, women, girls, vulnerable groups such as persons with disabilities, and children are more exposed to risks. Gender-based violence can occur at any time but can worsen during emergencies due to a lack of public order, the lack of or limited support services, and the temporary disappearance of social networks. Crowded spaces such as evacuation centres and shelters can enhance protection risks such as sexual abuse, harassment, neglect to specific needs (for example, for older persons and/or persons with disabilities), and sexual exploitation and abuse. For this reason, to comply with minimum standard commitments of protection, gender and inclusion are key for these settlements. One way is to ensure security personnel that prevents women and children from being victims of violence and adapting these physical spaces to their needs. In terms of gender-based violence, it is necessary to establish preventative measures in the evacuation centres and continue to apply these measures during the entire intervention.

Regarding the needs analysis of mental health and psychosocial support, the contextual stress can enhance the manifestation of interpersonal violence in the communities, including, for example, intimate partner violence, gender-based violence such as sexual violence, and community violence. It is essential to guarantee access to psychological assistance with an approach to protection and support provided by health or community services.

Regarding the presence of specific vulnerable populations, such as pregnant women and persons with disabilities, to respond to their specific needs in terms of information is key.

**Population to be assisted:** The target population will be defined based on surveys in the existing evacuation centre and assessments carried out by volunteers in the field. Population profile and specific populations of vulnerability, such as persons with disabilities, pregnant women, and children, will be considered for actions conducted.

**Standards / Reference points:** PGI approaches will be aligned with the IFRC's Minimum Standards for Protection, Gender, and Inclusion in Emergencies, the Inter-Agency Standing Committee (IASC) Gender-Based Violence Guidelines (2015). The IFRC's Minimum Standards have been developed based on (but not limited to) the Sphere handbook (2019), and the Minimum Standards for Child Protection in Humanitarian Action (2019).

<b>P&amp;B Output Code</b>	<b>PGI Outcome 1: Communities become more peaceful, secure and inclusive by meeting the needs and rights of the most vulnerable.</b>	# volunteers and staff reached with outreach on PGI issues. Target: 250											
	<b>PGI Output 1.1: Programs and operations ensure safe and equitable delivery of basic services, taking into account different needs based on gender and other diversity factors.</b>	# volunteers and staff sign the Code of Conduct and/or receive information on PGI Target: 500											
	Planned Activities Week / Month	1	2	3	4	5	6	7	8	9	10	11	12
AP031	Conduct an assessment of the specific needs of the affected population based on criteria from the PGI minimum standards for emergency situations.												
AP031	Establish a system to ensure that National Society staff and volunteers have signed and been briefed on the NRC Code of Conduct, the PSEA Policy and the Child Protection Policy.												

## Strategies for Implementation

Request (CHF): 75,859

P&B Output Code	S1.1: The objectives of strengthening the capacity and organizational development of National Societies are facilitated to ensure that National Societies have the necessary foundations, systems, structures, competencies and legal, ethical and financial capacities to plan and implement actions.												
	Output S1.1.4: National Societies have effective and motivated volunteers who are protected.											# of insured volunteers Target: 1,520	
Planned Activities Week / Month	1	2	3	4	5	6	7	8	9	10	11	12	
AP040	Ensure that volunteers are insured												
AP040	Provide comprehensive briefings on the role of volunteers and the risks they face												
AP040	Ensure that volunteers are aware of their rights and responsibilities												
AP040	Ensure the safety and well-being of volunteers through operational security trainings												
AP040	Ensure that volunteers have the proper equipment for personal protection and to deliver their volunteer services												
AP040	Ensure that volunteers are part of the decision-making processes in all the operations												
AP011	Procurement and distribution of PPE among first responders (for 1,500 volunteers) – Complementary to the PPE already distributed by the COVID-19 Operation												
AP040	Strengthening of the Fundamental Principles of the Red Cross among volunteers according to the needs during the emergency												
AP039	Hiring of staff to support the operation (1 Coordinator, 1 PMER, 2 Field staff, 1 Admin, 1 Procurement Officer)												
P&B Output Code	Outcome S2.1: Effective and coordinated international disaster response is ensured.												
	Output S2.1.1: Effective and respected surge capacity mechanism is maintained.											One RIT deployed to support the operation # of monitoring visits: Target: 5 One lesson learned carried out	
Planned Activities Week / Month	1	2	3	4	5	6	7	8	9	10	11	12	
AP046	RIT deployment (covered by the Canadian Red Cross)												
AP046	IFRC monitoring visits												
AP055	Lessons Learned workshop												

## Budget

See [Annex](#) for the budget.

## Contact Information

For further information specifically related to this operation please contact:

### In the National Society

- Virginia Madrigal, National Relief Director, [crndireccionsocorros@humanidad.org.ni](mailto:crndireccionsocorros@humanidad.org.ni)
- Auner Garcia, General Director, [direcciongeneral@humanidad.org.ni](mailto:direcciongeneral@humanidad.org.ni)

### In the IFRC regional office for the Americas:

- Nelson Aly Rodriguez, Head of the Country Cluster Support Team (CCST) in Central America, [nelson.alyrogriguez@ifrc.org](mailto:nelson.alyrogriguez@ifrc.org)
- Gonzalo Atxaerandio, Disaster Management Coordinator for Central America and Recovery focal point, [gonzalo.atxaerandio@ifrc.org](mailto:gonzalo.atxaerandio@ifrc.org)
- Jono Anzalone, Head of the Disaster and Crisis Department; email: [jono.anzalone@ifrc.org](mailto:jono.anzalone@ifrc.org)
- Maria Larios; Planning, Monitoring, Evaluation and Reporting (PMER) Manager; phone: +507 317-3050; email: [maria.larios@ifrc.org](mailto:maria.larios@ifrc.org)

### In Geneva:

- Eszter Matyeka DREF, Senior Officer; email: [eszter.matyeka@ifrc.org](mailto:eszter.matyeka@ifrc.org)
- Antoine Belair; Operations Coordination Senior Officer; email: [antoine.belair@ifrc.org](mailto:antoine.belair@ifrc.org)



### How we work

All IFRC assistance seeks to adhere to the Code of Conduct for the International Red Cross and Red Crescent Movement and Non-Governmental Organizations (NGO's) in Disaster Relief and the Humanitarian Charter and Minimum Standards in Humanitarian Response (Sphere) in delivering assistance to the most vulnerable. The IFRC's vision is to inspire, encourage, facilitate and promote at all times all forms of humanitarian activities by National Societies, with a view to preventing and alleviating human suffering, and thereby contributing to the maintenance and promotion of human dignity and peace in the world.

# DREF OPERATION

MDRNI010 - NICARAGUA: HURRICANE ETA

4/11/2020

## Budget by Resource

Budget Group	Budget
Shelter - Relief	81,000
Clothing & Textiles	15,800
Water, Sanitation & Hygiene	85,000
Medical & First Aid	55,000
Teaching Materials	23,485
Utensils & Tools	47,000
<b>Relief items, Construction, Supplies</b>	<b>307,285</b>
Distribution & Monitoring	12,544
Transport & Vehicles Costs	18,470
Logistics Services	7,500
<b>Logistics, Transport &amp; Storage</b>	<b>38,514</b>
National Society Staff	15,679
Volunteers	25,330
<b>Personnel</b>	<b>41,009</b>
Workshops & Training	4,000
<b>Workshops &amp; Training</b>	<b>4,000</b>
Travel	10,000
Information & Public Relations	4,000
Office Costs	2,700
Communications	4,970
Financial Charges	600
<b>General Expenditure</b>	<b>22,270</b>
<b>DIRECT COSTS</b>	<b>413,078</b>
<b>INDIRECT COSTS</b>	<b>26,850</b>
<b>TOTAL BUDGET</b>	<b>439,928</b>

## Budget by Area of Intervention

AOF1	Disaster Risk Reduction	
AOF2	Shelter	182,535
AOF3	Livelihoods and Basic Needs	2,876
AOF4	Health	69,811
AOF5	Water, Sanitation and Hygiene	101,143
AOF6	Protection, Gender and Inclusion	7,705
AOF7	Migration	
SFI1	Strengthen National Societies	57,648
SFI2	Effective International Disaster Management	15,017
SFI3	Influence others as leading strategic partners	3,195
SFI4	Ensure a strong IFRC	
<b>TOTAL</b>		<b>439,928</b>

