

www.ifrc.org
Saving lives,
changing minds.

Disaster relief emergency fund (DREF) Moldova: Drought

 International Federation
of Red Cross and Red Crescent Societies

DREF operation n° MDRMD005
GLIDE n° DR-2012-000199-MDA
30 November 2012

The International Federation of Red Cross and Red Crescent (IFRC) Disaster Relief Emergency Fund (DREF) is a source of unearmarked money created by the Federation in 1985 to ensure that immediate financial support is available for Red Cross and Red Crescent emergency response. The DREF is a vital part of the International Federation's disaster response system and increases the ability of National Societies to respond to disasters.

CHF 171,996 has been allocated from the IFRC's Disaster Relief Emergency Fund (DREF) to support the Red Cross Society of Moldova in delivering immediate assistance to some 5,800 beneficiaries (2,240 families). Unearmarked funds to repay DREF are encouraged.

Summary: In 2012, Moldova suffered the combined impacts of poor rainfall and extremely high temperatures. The State Hydro-Meteo Service (SHS) reported temperatures in June-July that were 3.7-5.1 C° higher than annual averages and the number of

days with max. air temperature higher than 30 degrees was 39-62 days (the norm being 8-27 days) and the precipitation in the same period was only 15-60 % of the multiannual average, with soil temperatures reaching record heights and soil moisture being only 1/3 of the multiannual average. The surface water flow reduced by 30-50 % compared to the multiannual average in the substantial catchments areas (Nistru and Prut rivers) and by 20-40 % in smaller catchments areas and rivers. These combined impacts resulted in major losses in the national crop production.

The 2012 drought in Moldova is part of a regional phenomenon, which affected large parts of the Black Sea region from Romania to Moldova, Ukraine and southwest Russia, the Balkans and Central Europe with all these countries reporting major reduction in crop production, particularly for summer crops.

On 06 August 2012, in a letter to all representatives of diplomatic corps and international organizations, the Prime Minister announced that Moldova's agrarian sector is in an acute need of international aid to mitigate the effects of the prolonged unfavourable weather conditions.

Based on the situation, this DREF operation is focusing on providing support and assistance to the most affected population in 11 regions. Food assistance is urgently needed for the identified 2,240 families (5,800 beneficiaries spread in 11 regions).

This operation is expected to be implemented over four months, and will therefore be completed by 29th March 2013. A Final Report will be made available three months after the end of the operation, by 29th June 2013.

[<click here for the DREF budget; here for contact details; here to view the map of the affected area>](#)



Maize field affected by the drought during the summer in 2012 in Moldova.
Photo: IFRC

The situation

On average, Moldova experiences a drought once every five years in the North and once every three years in the Southern and Central districts.

In 2012, Moldova suffered the combined impacts of poor rainfall and extremely high temperatures. The State Hydro-Meteo Service (SHS) reported temperatures in June-July were 3.7-5.1 C° higher than annual averages and the number of days with max. air temperature higher than 30 degrees was 39-62 days (the norm being 8-27 days) and the precipitation in the same period was only 15-60 % of the multiannual average, with soil temperatures reaching record heights and soil moisture being only 1/3 of the multiannual average. The surface water flow reduced by 30-50 % compared to the multiannual average, in substantial catchments areas (Nistru and Prut rivers) and by 20-40 % in smaller catchments areas and rivers. These combined impacts resulted in major losses in the national crop production.



Summer maize crops destroyed by the drought. Photo: IFRC

The 2012 drought in Moldova is part of a regional phenomenon, which affected large parts of the Black Sea region from Romania to Moldova, Ukraine and southwest Russia, the Balkans and Central Europe with all these countries reporting major reduction in crop production, particularly for summer crops.

In 2012 Moldova suffered one of the most severe droughts in the recent history causing huge reductions in yields and crop failure.

Maize yields declined by 59% and sunflower yields declined by 53% compared to the multiannual average.

While no shortfalls in food availability are envisaged, there could be serious problems in economic access to the food for the poorest members of Moldovan society, as due to the demands the prices of food available in the market has been increased.

Although at the aggregated national level, the impact of the 2012 drought seems to be less severe than the previous drought of 2007, in the South region of Moldova and in some parts of the Centre region, the impact of the 2012 drought appears to be more intense. The Southern region as the most affected one registered the most severe drops in production in the country, in particular for the maize and sunflower crops. Similar impacts are expected for the Transnistria region. According to the Minister of Economy, Moldova might lose over 1.5% of economic growth this year due to the drought effects.



Coordination and partnerships

The Moldova Red Cross is working closely with the Government's to provide relief assistance to the most vulnerable residents. At the same time, the National Society is closely coordinating its activities with the IFRC Europe Zone office, which is going to provide technical and financial support in carrying out the planned operation.

The Moldovan Government will earmark 162 million lei (EUR10,250,000) to mitigate the consequences of the drought and to support producers to sow autumn wheat and maize and to preserve the livestock too.

According to the decision approved by the cabinet, 60 million lei (EUR 3,797,000) will be used to partly cover the spending for sowing autumn wheat and 90 million lei to partly cover the expenses for sowing maize. The government allocated another 12 million (EUR 746,800) lei for the acquisition of fodder for the livestock in the areas affected by drought.

The European Commission will provide Moldova with 50 million lei (EUR 3.15 million) to mitigate the consequences of this year's drought.

The Romanian government decided to give Moldova EUR 50,000 as humanitarian assistance from the funds of official development assistance for. The Government of Romania has also donated 110 tons of wheat seeds to help Moldova ensure the next year's wheat production.

UN agencies present in the country are also providing support to relevant ministries within their programmatic frameworks. FAO has conducted Crop Assessment mission and is providing capacity development on information and data collection; impact (direct damages and losses as well as effects on poverty/human development) and needs assessment. WFP/UNDP is involved in performing vulnerability assessment (including pre- and post-disaster sector status) in cooperation with the Ministry of Agriculture and the Ministry of Interior/ Civil Protection Service.

Red Cross and Red Crescent action

The Moldova Red Cross is one of the major humanitarian actors in food security in Moldova. It is covering gaps especially in most vulnerable areas and strata of the population.

On 3rd September 2012 the Moldova Red Cross Society approached the Europe Zone Office of the International Federation for requesting support in assessing the situation caused by the drought in the country.

IFRC conducted a drought assessment in early October 2012 to verify whether and to what extent the drought would affect the poorest and most vulnerable sectors of the society in the context of the progress made by the Moldovan Government in re-structuring and improving social protection measures.

The Red Cross Society of Moldova performs its activity on the entire territory of the republic through well established Red Cross branches, volunteers and almost 20 staff. The National Society of Moldova concentrates its efforts on the support of lonely elderly, orphans, and families with many children, low-income families, the disabled, in other words – on the disinterested support of the most vulnerable parts of population and the people affected every year by natural disasters. In this operation five staff members will participate from the National Society Headquarters level and another nine staff member from the branch levels. Approximately 100 volunteers will be involved during the implementation of the operation.

The Red Cross Society of Moldova closely collaborates with central and local authorities and other organizations rendering assistance to the population. The humanitarian activity of the Moldovan Red Cross is well known and highly appreciated in Moldova both by the population and by state structures.

During the last five years, Moldovan RC had been working with some international partners such as Norwegian RC, French RC, Japanese RC, Netherlands, Chinese RC, Italian RC, Spanish RC, Swiss RC, DFID, Belgium RC and Estonian RC, working bilaterally or via the International Federation.

IFRC will support Moldova RC related to the technical aspect of the operation. Also IFRC will provide coordination to all the Movement partners who are willing to support the efforts of the National Society to address the needs of the people affected by the drought.

The needs

According the IFRC/Moldova Red Cross assessment the total estimated for rural population affected by the drought in South and Central region is about 54,000 people but it is likely to be on the low side. Total estimation of urban population affected is 62,000 people.

The assessment revealed that the impacts of drought will be direct and indirect. Direct impacts will mainly hit rural households whose income depends mostly on agriculture. Impacts include:

- Very low crop production in rural households and reduced fodder availability
- Reduced availability of agricultural labour
- Reduced income arising from leased land (particularly for the rural elderly or unable to work the land) as companies may cut back on lease payments and reduced food reserves as in many cases lease is paid in kind.
- Higher indebtedness as low crop production prevents debt repayment

The indirect impact appears in likely increase in food prices, which will have a wider scope affecting both rural and urban populations in the three regions. Already in rural areas visited by the assessment team prices of some staple food, vegetables and fruits increased between 30- 50 % . The way food prices will evolve in the next few months is a key factor.

Urban households will be affected in case of rising food prices as markets provide the bulk of their food (85%, 19% being fully dependent on the markets).

Rural households will have to procure the shortfall in own production from the markets, increasing their dependency above the normal levels (currently 51% of food intake); on the other hand, household financial resources (income from farming and labour, produce for in kind expenditures) will also be reduced, restricting the ability of the households to procure food from the markets.

Further negative impacts for 2013 may arise from a retraction in investment and area planted by the larger cooperatives and business farmers, which can lead to decreases in income from leasing land and from decreased labour availability.

Poor food consumption and low dietary diversity will adversely affect most vulnerable categories of population (women, children and elderly people) and increase malnutrition, adversely affecting their health situation.

The selection of the beneficiaries was conducted by the MRC along the following methods:

- Door-to-door survey by volunteers;
- Coordination with local administration, local government institutions and community leaders in order to avoid any potential overlapping or duplication.

The beneficiaries for the food security operation have been selected according to the following criteria:

- Lonely elderly with minimal level of income (pensions and family support)
- Disabled persons with minimal level of income (social assistance and family support)
- Multi-children families
- Other categories like single mothers, children without parents/ living with relatives
- Rural residents that rent the whole or most of their land (many of them pensioners)
- Agricultural workers
- Small holder farmers

The proposed operation

This proposed DREF operation will address the needs of affected population through:

- Provision of supplementary food for 5,800 beneficiaries (2,240 families) affected by food insecurity in 11 regions mostly from rural areas. The process will be coordinated by an MRC specialist in close cooperation with local authorities and community leaders. The operation will add to the improved nutrition of the affected population. Dietary advice will also be provided to the beneficiaries by the local health authorities.

The list of regions covered by this operation and the number of targeted families in each region based on the results of the assessment

Region	Number of Families for assistance
Basarabesca	180
Criuleni	135
Chişinău (villages for municipality)	320
Ceadâr-Lunga	150
Făleşti	320
Orhei	250
Rezina	135
Teleneşti	140
Tighina	220
Ungheni	240
Vulcăneşti	150
Total number of families	2,240

- At the end of the operation lessons learnt workshop will be conducted for the Red Cross volunteers and members of the national HQ staff.

The food aid basket will consist of wheat flour, sugar, vegetable oil and tea. One parcel contains the supplementary food for one family for a one month period of time. During the operation two rounds of distributions will be organised. See table below detailing the content of the food aid basket:

Amount of food to be distributed

Food	Quantity
Buckwheat	2 kg
Rice	2kg.
Sugar	2 kg
Pasta	2 kg
Corn flour	4 kg
Wheat flour	4 kg
Sunflower oil	2 bottles (0,9L)
Caned pork meat	3 cans X 0,35kg
Caned Fish	3 cans X 0,290 kg

Food security and livelihoods

Outcome: Affected families (approximately 5,800 people) in 11 regions receive complementary food ration to meet their immediate needs.

Outputs:

To provide complementary emergency food aid to 2,240 families who are most vulnerable to food insecurity as the result of the drought

Activities planned:

- Develop beneficiary identification and targeting strategy and registration system to deliver the intended assistance.
- Local procurement according IFRC procedure storage, transportation, and distribution of food items.
- Monitor distribution of food relief supplies to 2,240 households and control supply movements from point of dispatch to end user.
- Monitor and evaluate the relief activities and provide reporting on relief distributions.

The Moldova National Society consulted with the governmental agencies leading the emergency response about the contents of the standard food parcel, which was shaped in line with caloric values, traditions and healthy diet.

The Moldova Red Cross Society has established a reliable reporting system. The projects personnel prepare different types of narrative and financial reports based on the progress achieved during the implementation of the operation. The projects are regularly monitored and evaluated by using inquiries and questionnaires. Beneficiary satisfaction survey will be conducted after distribution of the items to assess if beneficiaries have received the items in a timely and quality manner.

In implementing the current project senior staff will conduct at least three monitoring trips to the field to ensure the sharing of experience and communication with the branches. IFRC RDRT deployed to Moldova will closely monitor the operation to ensure that the IFRC programme policies, procedures, and directions are well followed. Taking into account managerial and institutional weaknesses of the National Society, the tendering process, financial management and reporting will be carried out under IFRC guidance and support provided by the IFRC Zone office in Budapest.

Contact information

For further information specifically related to this operation please contact:

- **Moldova Red Cross:** Vasile Cernenchi, Executive Director, phone: +373 692 94 856; email: vasile.a.c@gmail.com
- **IFRC Zone:** Alberto Monguzzi, Acting Disaster Management Coordinator; office phone: +36 1 8884 500; email: alberto.monguzzi@ifrc.org
- **In Geneva:** Christine South, Operations Support, Phone: +41.22.730.4529, email: christine.south@ifrc.org



Click here

1. DREF budget is available **here**
 2. Map of the affected area is available **here**
 3. Click **here** to return to the title page
-

How we work

All IFRC assistance seeks to adhere to the Code of Conduct for the International Red Cross and Red Crescent Movement and Non-Governmental Organizations (NGO's) in Disaster Relief and the Humanitarian Charter and Minimum Standards in Disaster Response (Sphere) in delivering assistance to the most vulnerable.

The IFRC's vision is to inspire, encourage, facilitate and promote at all times all forms of humanitarian activities by National Societies, with a view to preventing and alleviating human suffering, and thereby contributing to the maintenance and promotion of human dignity and peace in the world.

www.ifrc.org

Saving lives, changing minds.



The IFRC's work is guided by Strategy 2020 which puts forward three strategic aims:

1. Save lives, protect livelihoods, and strengthen recovery from disaster and crises.
 2. Enable healthy and safe living.
 3. Promote social inclusion and a culture of non-violence and peace.
-

DREF OPERATION

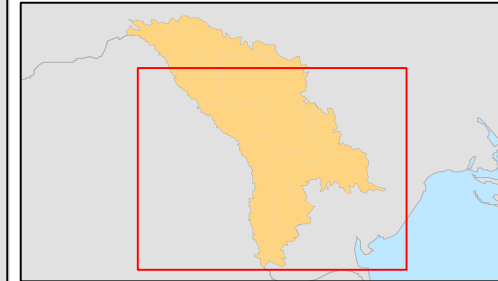
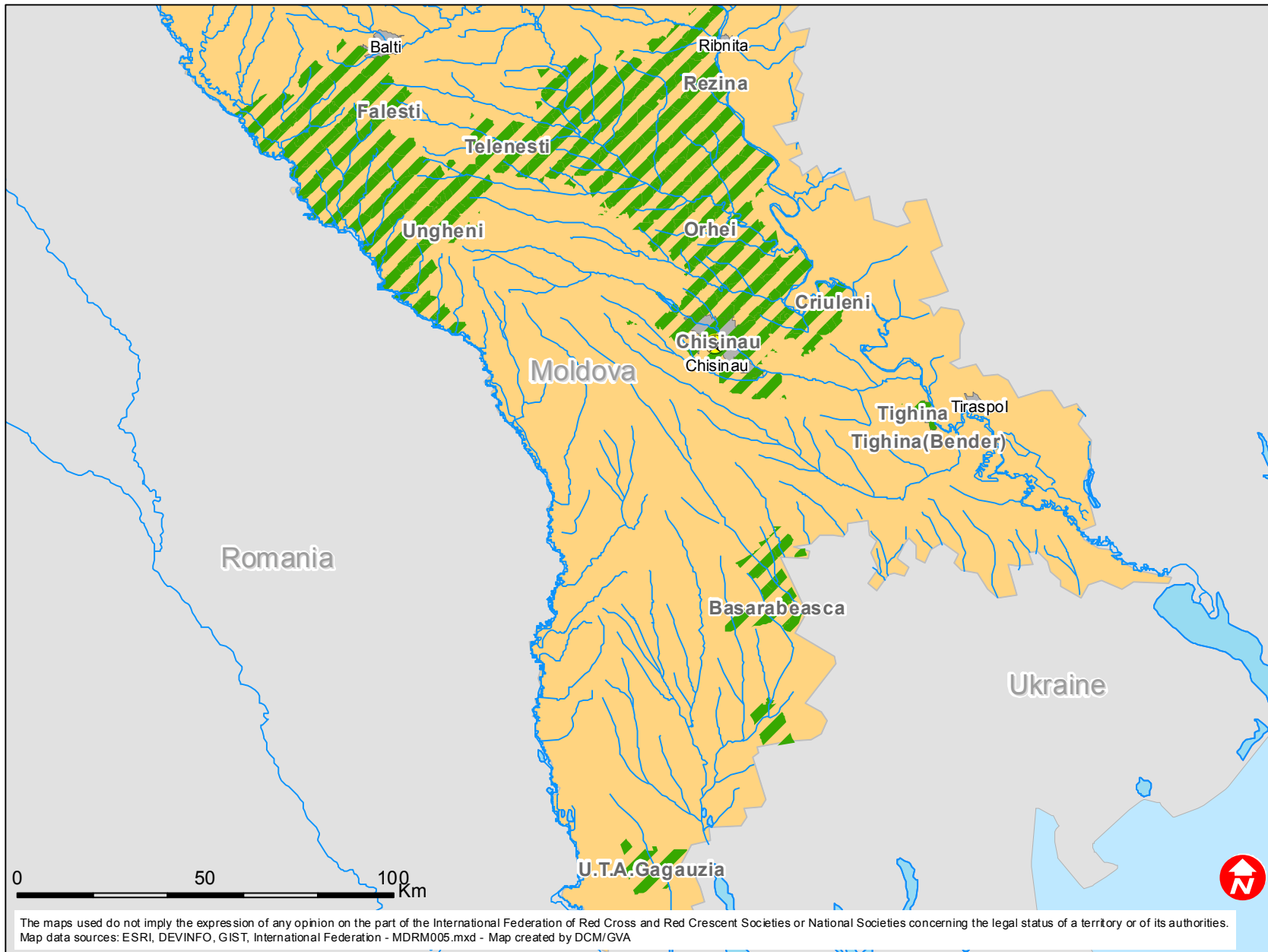
30/11/2012



MDRMD005 Moldova:Drought

Budget Group	DREF Grant Budget CHF
Shelter - Relief	
Shelter - Transitional	
Construction - Housing	
Construction - Facilities	
Construction - Materials	
Clothing & Textiles	
Food	134,400
Seeds & Plants	
Water, Sanitation & Hygiene	
Medical & First Aid	
Teaching Materials	
Utensils & Tools	
Other Supplies & Services	
Cash Disbursements	
Total RELIEF ITEMS, CONSTRUCTION AND SUPPLIES	134,400
Land & Buildings	
Vehicles	
Computer & Telecom Equipment	
Office/Household Furniture & Equipment	
Medical Equipment	
Other Machinery & Equipment	
Total LAND, VEHICLES AND EQUIPMENT	0
Storage, Warehousing	2,400
Distribution & Monitoring	
Transport & Vehicle Costs	7,500
Logistics Services	
Total LOGISTICS, TRANSPORT AND STORAGE	9,900
International Staff	3,000
National Staff	
National Society Staff	5,169
Volunteers	1,900
Total PERSONNEL	10,069
Consultants	
Professional Fees	
Total CONSULTANTS & PROFESSIONAL FEES	0
Workshops & Training	900
Total WORKSHOP & TRAINING	900
Travel	2,000
Information & Public Relations	1,500
Office Costs	2,100
Communications	350
Financial Charges	280
Other General Expenses	
Shared Office and Services Costs	
Total GENERAL EXPENDITURES	6,230
Partner National Societies	
Other Partners (NGOs, UN, other)	
Total TRANSFER TO PARTNERS	0
Programme and Services Support Recovery	10,497
Total INDIRECT COSTS	10,497
TOTAL BUDGET	171,996



Moldova: Drought



-  Targeted regions
-  Main cities