

www.ifrc.org  
Saving lives,  
changing minds.

# Operation Update Report

## Philippines: Mindanao Earthquakes



<b>Emergency appeal n°</b> MDRPH036	<b>GLIDE n°</b> <a href="#">EQ-2019-000129-PHL</a>
<b>Operation update n° 4 (12-mth):</b> 21 December 2020	<b>Timeframe covered by this update:</b> 31 October 2019 to 31 October 2020
<b>Operation start date:</b> 31 October 2019	<b>Operation timeframe:</b> 14 months <b>End date:</b> 31 December 2020
<b>Funding requirements (CHF):</b> 2,700,000	<b>DREF amount allocated:</b> CHF 598,467
<b>N° of people being assisted:</b> 38,444	
<b>Red Cross Red Crescent Movement partners currently actively involved in the operation:</b> The Philippine Red Cross (PRC) is working with the International Federation of Red Cross and Red Crescent Societies (IFRC) in this operation. PRC and IFRC will coordinate with the International Committee of the Red Cross (ICRC) on issues and movement in Mindanao areas.	
Red Cross and Red Crescent (RCRC) Partners who have contributed to the IFRC Emergency Appeal are: American Red Cross, British Red Cross, China Red Cross (Hong Kong branch), Finnish Red Cross, Japanese Red Cross Society, Red Cross of Monaco, Swedish Red Cross, The Canadian Red Cross Society, The Canadian Red Cross Society (from Canadian Government*), The Netherlands Red Cross (from Netherlands Government*) and Turkish Red Crescent Society.	
<b>Other partner organizations actively involved in the operation:</b> government of Philippines such as Philippine Institute of Volcanology and Seismology (PHIVOLCS), National Disaster Risk Reduction and Management Council (NDRRMC), Department of Health (DOH), Department of Education (DepEd), Department of Energy (DOE), Armed Forces of the Philippines (AFP).	

## A. SITUATION ANALYSIS

**16 October 2019:** A 6.3 magnitude earthquake struck Tulunan, Cotabato. PRC chapters from the affected areas started mobilizing their staff and volunteers to support the affected population.

**29 October 2019:** Another strong 6.6 earthquake struck Tulunan, Cotabato. IFRC requested a [DREF](#) allocation of CHF 223,467 to support PRC deliver assistance to 7,500 people during 4 months.

**31 October 2019:** Another strong 6.5 earthquake strikes Tulunan, Cotabato. Following first assessments, IFRC subsequently issues an [Emergency Appeal](#) for CHF 1.85 million to support PRC to deliver assistance to 35,500 people in 14 months. An additional CHF 200,000 (making the total CHF 423,467) is allocated as a DREF loan to the Emergency Appeal.

**2 December 2019:** IFRC issues a [revised Emergency Appeal](#) in the amount of CHF 2.1 million, consisting mainly of an increase in support to life-saving interventions as well as additional activities reflecting the latest field assessments results, as reported in the [revised Emergency Plan of Action](#). The Emergency Appeal must provide assistance to 35,500 people in 14 months.

**15 December 2019:** A 6.9 magnitude earthquake strikes in Matanao, Davao del Sur. PRC chapters from the affected area have mobilized their staff and volunteers to support the affected population.

**19 December 2019:** IFRC issues the [Operations update no. 1](#) and the [revised Emergency Appeal](#) for CHF 2.7 million to extend support into areas affected by the earthquake in Matanao, Davao del Sur; with the intention of delivering assistance to 40,500 people in 14 months. An additional CHF 175,000 (making the total CHF 598,467) was allocated as a DREF loan to the Emergency Appeal.

**5 March 2020:** IFRC issues [Operations Update no. 2](#).

**2 June 2020:** IFRC issues [Operations Update no. 3](#).

## Description of the disaster

On 29 October 2019, two strong earthquakes struck the province of North Cotabato, Mindanao, the first one of magnitude 6.6 in Tulunan at 09:04; the second of magnitude 6.1 and 9km deep at 10:42 with almost the same epicentre. Just two days after, on 31 October 2019 at 09:15, another tectonic<sup>1</sup> magnitude 6.5 earthquake shook central and eastern Mindanao at a shallow depth of two kilometres. Once again, the epicentre was identified in Tulunan, North Cotabato<sup>2</sup>. A state of calamity<sup>3</sup> was declared for Davao del Sur on 30 October and Cotabato on 5 November 2019, the two hardest hit provinces. These earthquakes, as well as the magnitude 6.3 earthquake recorded on 16 October 2019, with the same epicentre location, were considered part of a sequence of events resulting from interdependent faults in the region. No tsunami warnings were issued but many aftershocks, ranging from magnitude 1.5 to 5.5 were recorded. The [NDRRMC](#) update on 22 January 2020, indicated the main impacts of the earthquakes as follows:

Earthquakes	Earthquake on 29 October – 6.3M Earthquake on 29 October – 6.6M Earthquake on 31 October – 6.5M (source: <a href="#">NDRRMC</a> , 22 January 2020)	Earthquake on 15 December – 6.9M (Source: <a href="#">NDRRMC</a> , 10 January 2020)
Affected	71,247 families (349,266 people), 362 barangays, Regions XI and XII	86,548 families (394,355 people), 218 barangays, Regions XI and XII
Displaced – Inside Evacuation Centre	13,073 families (60,130 people) in 107 evacuation centres in Regions XI and XII	9,269 families (35,698 people) in 102 evacuations centres in Regions XI and XII
Displaced – Outside Evacuation Centre	25,812 families or 125,609 persons staying with relatives and/or friends	23,207 families (99,982 people) staying with relatives and/or friends
Casualties and injured	23 dead, 563 injured, 11 missing	13 dead, 210 injured and 1 missing
Houses damaged	26,025 totally, 23,665 partially	7,324 totally, 37,761 partially
Schools damaged	37 totally, 1,508 partially	397 partially damaged
Health facilities damaged	50 totally, 224 partially	98 health facilities

While the government authorities and humanitarian partners were providing humanitarian assistance to people in need, on 15 December 2019, another 6.9 magnitude earthquake struck at 9km northwest of Matanao municipality in the province of Davao del Sur, Mindanao. This was the fourth quake above magnitude 6 within the two months to hit this part of Mindanao, all within a radius of 12km. According to the PHIVOLCS<sup>4</sup>, although felt in the same areas, this latest earthquake did not emanate from the same fault as the October's series of temblors in Mindanao. However, the December earthquake compounded previous displacement as well as damage to homes, schools and infrastructure from the October earthquakes, as reported in the DSWD [DROMIC](#) report. A cumulative of 13 confirmed deaths, 210 injured and 1 missing were reported.

The plan of action for this emergency appeal was [revised](#) in December 2019 to provide a comprehensive response taking into account all geographical areas affected and escalating needs generated.

There is risk to the safety of personnel due COVID-19 when implementing the emergency operation. PRC has incorporated COVID-19 guidelines into its response protocols. All the volunteers and staff follow adequate control measures to prevent a further worsening of the outbreak. Appropriate personal protective equipment (PPE) has been provided for personnel involved in the operation (goggles, masks, shields, robs).

## Summary of current response

### Overview of Host National Society

Since first earthquakes in October, PRC's Operations Center (OpCen) has been collecting information – from the chapters and Red Cross 143 volunteers in the areas – and issuing disaster incident updates. The PRC Communications teams has been posting updates and photos of the situation on [Facebook](#) and [Twitter](#).

<sup>1</sup> [Types](#) of earthquakes and faults.

<sup>2</sup> Philippine Institute of Volcanology and Seismology ([PHIVOLCS](#)).







<sup>3</sup> State of calamity, Republic Act no. 10121 – [implementing rules and regulations](#).

<sup>4</sup> <https://news.mb.com.ph/2019/12/16/6-9-quake-not-from-the-same-fault-as-octobers-series-of-temblors-in-mindanao-phivolcs/>

Response Teams such as the Philippine Red Cross Action Team (RCAT143) and the National Disaster Response Team (NDRT) as well as other personnel from the PRC, specialized in relief, shelter, water, sanitation and Hygiene (WASH), health and welfare, have been deployed. Other PRC chapters such as Compostela Valley Cotabato City, Davao del Sur, General Santos City, North Cotabato, South Cotabato and Sultan Kudarat have been supporting the response.

PRC headquarters and local chapters coordinated with the national and provincial DRRMCs respectively. In October and November, PRC conducted rapid and in-depth assessments using teams comprised of multisector personnel from national headquarters (NHQ) and chapters. Following the earthquake on 15 December 2019, PRC OpCen was activated, a medical team deployed in the field as well as search and rescue, rapid assessment and relief delivery teams. The action plan was revised following the new situation.

As of 31 October 2020, PRC has been able to carry out the following activities:

Sector	Actions taken
<b>First Aid</b> 	<ul style="list-style-type: none"> <li>• 16 first aid stations established</li> <li>• 8 ambulances mobilized</li> <li>• 11 individuals assisted and transported</li> <li>• 99 individuals reached with first aid management</li> <li>• 973 individuals assisted through blood pressure taking</li> </ul>
<b>Psychosocial support</b> 	<ul style="list-style-type: none"> <li>• 14 evacuation centres/sites served with welfare desk</li> <li>• 7,462 Individuals reached through psychosocial support programme (psychological first aid: 2,777; child-friendly spaces: 4,685)</li> </ul>
<b>Livelihoods and basic needs</b> 	<ul style="list-style-type: none"> <li>• 18,493 individuals served with hot meals and bread</li> <li>• 4,970 families provided with food packs</li> <li>• 13 communal kitchens constructed</li> <li>• 1,457 families were provided with multi-purpose cash grants</li> <li>• 628 families provided with household livelihood assistance worth PHP 10,000</li> </ul>
<b>Shelter and household items</b> 	<ul style="list-style-type: none"> <li>• 4,059 families provided with sleeping kits</li> <li>• 3,369 families provided with tarpaulins (emergency shelter)</li> <li>• 100 families provided with tents</li> <li>• 444 families provided with shelter toolkit</li> <li>• 37 shelters constructed</li> </ul>
<b>Water, sanitation and hygiene</b> 	<ul style="list-style-type: none"> <li>• 4,572,326 litres of water distributed</li> <li>• 13,781 people reached with hygiene promotion</li> <li>• 65 portable toilets, 8 transitional toilets and 26 shower facilities installed</li> <li>• 18 water bladders installed for water provision</li> <li>• 5 water tankers (Davao City, GenSar, Iligan and NHQ) and 2 water treatment units mobilized to support water provision</li> <li>• 3,572 families provided with hygiene kit</li> <li>• 3,676 families provided with jerry cans</li> </ul>
<b>Manpower and assets mobilized</b> 	<ul style="list-style-type: none"> <li>• Local and national assessment teams, first aid/medical team, and welfare team, extrication team and WASH team deployed to support the operation</li> <li>• 27 vehicles mobilized (2 PRC NHQ Trucks, 1 chapter truck, 2 rented trucks, 5 water tankers, 8 ambulances, 6 service vehicles, 3 hot meals vans)</li> </ul>

Philippines is one of the most disaster-prone country in the world. In 2019 to 2020, PRC has managed operations supported through the IFRC's Disaster Relief Emergency Funds (DREF) and the Emergency Appeal (EA) mechanisms in response to earthquakes (Batanes), typhoons (Mangkhut, Kanmmuri, Phanfone and Goni), disease outbreaks (dengue, measles, polio, and COVID-19) and volcano eruption (Taal volcano). The National Society has gained extensive experience in response and recovery. Given its mobilization capacity and acceptance within communities and the government, PRC was well placed to respond in Mindanao.

### Overview of Red Cross Red Crescent Movement in country

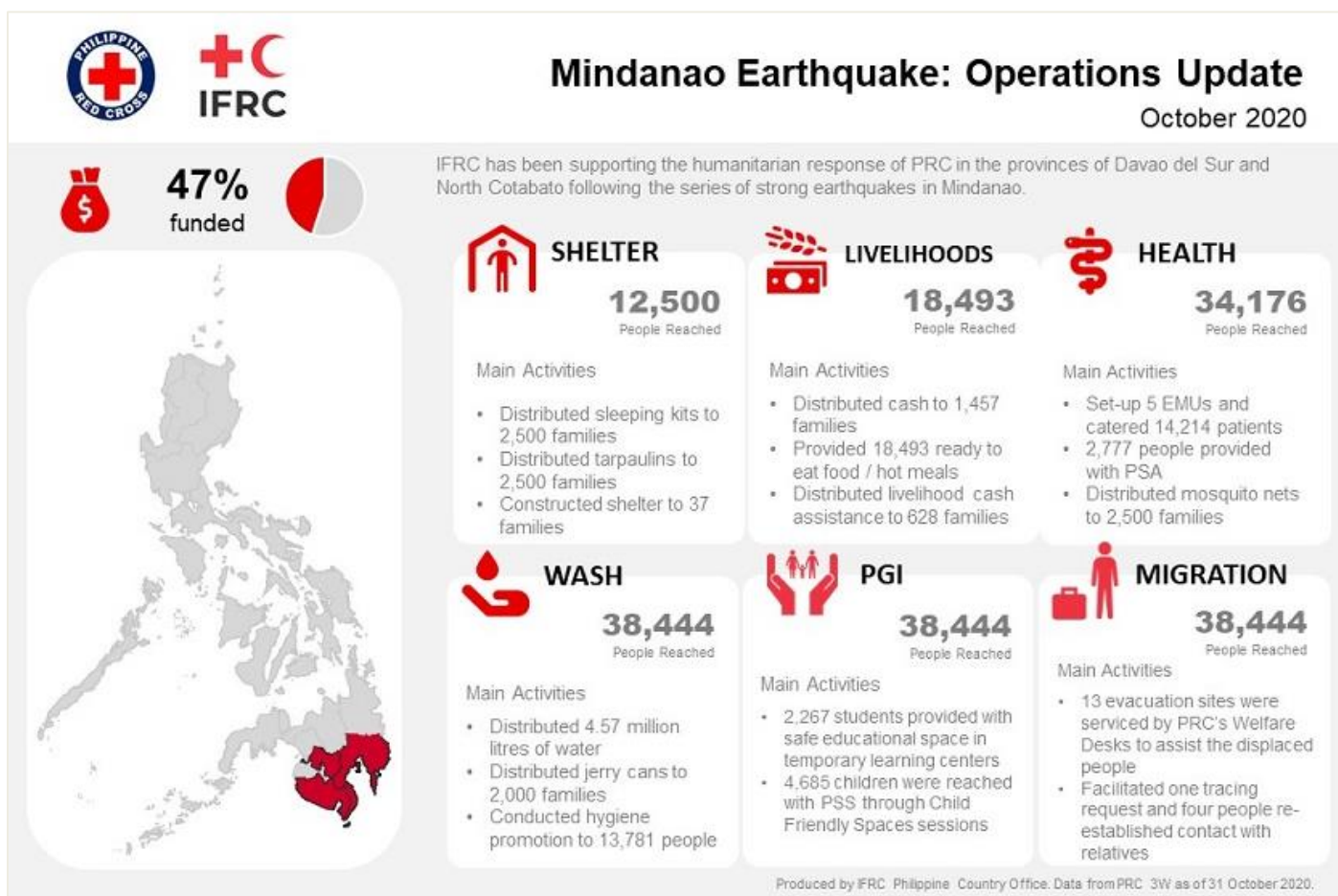
The PRC leads the overall response operation for the Movement, maintaining close coordination with Movement partners in the country and providing updates. In addition to the IFRC, a significant number of Movement partners are present in the country: ICRC, American Red Cross, Canadian Red Cross Society, Finnish Red Cross, German Red Cross, Japanese Red Cross Society, Netherlands Red Cross and Spanish Red Cross.

The IFRC CO is supporting PRC with disseminating updates to Movement partners with in-country presence and coordinating with the Asia Pacific Regional Office (APRO) in Kuala Lumpur, in line with the Emergency Response Framework of the IFRC Secretariat. The IFRC Philippines CO coordinates with National Societies in-country and

remains in close contact with the ICRC for any security-related issues in Mindanao. An information bulletin was published on 30 October 2019. The same day, the PRC, through the IFRC Philippines CO requested a DREF activation of CHF 223,467, which was approved on 31 October 2019. This was expanded to an Emergency Appeal on 4 November 2019, to address growing humanitarian needs after the third earthquake on 31 October. A revision of Emergency Appeal was issued on 2 December 2019, to incorporate the findings of in-depth assessments and needs identified.

The Emergency Appeal and the Emergency Plan of Action (EPoA) were revised again, to cover new geographical areas and meet the growing needs following the 15 December earthquake in Matanao, The Emergency Appeal was therefore revised to CHF 2.7 million (previously CHF 2.1 million) to extend support to the areas affected by the earthquake in Matanao, Davao del Sur, with the intention of providing assistance to 40,500 people (previously 35,500 people) in 14 months. An additional CHF 175,000 (for total of CHF 598,467) was allocated as a DREF loan to the Emergency Appeal to cover the operational costs of initial mobilization such as assessment, first aid, psychosocial support, search and rescue, WASH, welfare desks and emergency shelter and essential items for 1,000 more households.

The following infographics provide an overview on the coverage and reach of the IFRC EA operation as of 31 October 2020.



## Overview of non-RCRC actors in country

### Coordination with the authorities

As an auxiliary to the government, the PRC maintains strong relationships and collaboration with governmental bodies. The PRC headquarters in Manila and the local chapters coordinate closely with national, provincial and local disaster risk reduction and management councils, respectively NDRRMC, PDRRMC and LDRRMC as well as with other government institutions such as PHIVOLCS, DOH, DepEd, DOE, and AFP. In this operation, the PRC and the IFRC maintain ongoing coordination with the local government units, schools and other stakeholders at the barangay, municipal, provincial and national levels. PHILVOCS continuously monitor seismic events and publishes information and real-time updates on earthquakes. The NDRRMC coordinates with the city, provincial, municipal, and barangay disaster risk reduction and management councils and issues status reports. The [NDRRMC](#) releases advisory on earthquake information.

All movement of activities at the chapter level was in close coordination with the local government. When the LGU of Davao region declared no movement for all operations, the chapter followed the declaration. While in North Cotabato, the local government has agreed to continue the activities, with limitation in terms of access, with close coordination and monitoring from the government side.

### ***Inter-agency coordination***

At country level, the PRC and the IFRC are observers to, and participate in, the Humanitarian Country Team (HCT) meetings held in both disasters and non-emergency situations. PRC and IFRC are involved in relevant government-led cluster information sharing, planning, and analysis at all levels while IFRC supports PRC coordination efforts through representation in other relevant clusters, where appropriate. OCHA continues to develop [flash updates](#).

The IFRC is co-lead of the Shelter Cluster with the government lead agency Department of Social Welfare and Development (DSWD). The IFRC coordination focal point in country coordinated with OCHA and sector partners on inter-agency rapid needs assessments in affected areas. For the Mindanao earthquakes, the following agencies carried out rapid assessments: CRS and Caritas Philippines launched a joint initial rapid assessment in the Tulunan – Kidapawan areas; PRC in Davao del Sur and North Cotabato; Citizens Disaster Response Centre, with local partners MISFI and DIRECT in Davao del Sur and North Cotabato; Shelter Box; Plan International and ACTED. PDRF (the Philippine Disaster Resilience Foundation, the largest private sector platform in country) and its partner AirAsia has been providing logistical support to the government for the transport of shelter related items. Among the recently published assessment reports on the Mindanao earthquake's response is the UNHCR-Protection Cluster's IDP [Protection Assessment Report](#) and OCHA's Information, Communication and Accountability Assessment report (ICAA).

## **Needs analysis and scenario planning**

### **Needs analysis**

From 29 October to 9 November 2019, the PRC deployed two rapid damage and needs assessment (RDANA) teams (each including NDRTs and RCATs) in Davao del Sur and North Cotabato. The main findings from these assessments were shared on 12 November 2019. In addition to these rapid assessments, PRC needs analysis and action plan development were based on secondary data, including updates from the NDRRMC, DSWD and local disaster risk reduction and management councils, situation reports by clusters and media reports<sup>5</sup>.

The first assessments and secondary data identified food, health (including psychosocial support); shelter, WASH, as well as emergency education and protection to be prioritized to meet the immediate needs of those affected by the earthquakes. Furthermore, an in-depth assessment deployment was conducted from 19 to 28 November 2019. Two teams were mobilized respectively in Davao del Sur and North Cotabato. The in-depth assessment validated the information gathered from the RDANAs, and informed PRC further on the extent of damage to shelter, livelihoods, WASH and health. The assessment identified the most vulnerable groups to be targeted amongst the affected population; and engaged in consultation with these individuals to ensure that the design of the interventions was relevant to their priority needs.

Following the magnitude 6.9 earthquake of 15 December, a third RDANA assessment was carried out, which led to a second revision of the Emergency Appeal and the EPoA. This latest strong earthquake exacerbated the humanitarian situation of the people of Mindanao and necessitated an expansion of the PRC response in the newly affected areas to support those affected. The municipalities of Matanao and Padada, which were particularly affected were among the poorest in the province of Davao del Sur; with a large part of the population already vulnerable before it struck. The priority needs included education during emergencies, food, health (including psychosocial support), protection, shelter, and water, sanitation and hygiene (WASH).

For details on the **summary of the needs analysis, targeting and scenario planning** please refer to the [Emergency Plan of Action](#) (2 December 2019) and the [revised Emergency Plan of Action](#) (9 January 2020).

### **Operation Risk Assessment**

Possible operational risks are shown below:

- Security risk posed by armed non-state actors in the areas most likely to be affected is regarded as low to medium, and not expected to impact on the implementation of the operation or hinder access by IFRC/PRC personnel. PGI minimum standards will be used to ensure a “do no harm” approach, and elaborate on how the mitigation approach will include establishment of protection referral pathways, training and sensitisation of staff and volunteers to identify and refer protection concerns, and safeguarding in the operation (such as signing the

---

<sup>5</sup> As an example, the Mindanao Humanitarian Team's [impact and needs assessment report](#).

Code of Conduct and Child Protection policy) for all staff and volunteers. There will continue to be close coordination between the IFRC CO, PRC and ICRC on security related issues.

- There has been supply chain disruption due to COVID-19. Procurement of PPE, non-food items like hygiene kits has been a significant challenge with regards finding suppliers and international transportation.
- There is risk to the safety of personnel due COVID-19 when implementing the interventions (such as CEA and programme monitoring). Appropriate PPE will be provided for personnel involved in the operation (goggles, masks, shields, robes). Advisory information will also be circulated in terms of precautionary measures to be taken to protect health, and early warning early action systems identified for safe evacuation (in accordance with the authorities own contingency plans).
- Delivery of community services such as cash grants, delivery of construction materials has been a challenge due to the restrictions on travel and high number of COVID-19 cases circulating in community.

## **B. OPERATIONAL STRATEGY**

### **Overall Operational objective**

This operation aims to meet the immediate and early-recovery needs of the most vulnerable of the affected population in North Cotabato and Davao del Sur provinces. A total of 40,500 people (8,100 families) will be supported with health, WASH and welfare services, 3,000 families with unconditional multi-purpose grants, and 3,000 families with food, essential household items and shelter assistance. Early recovery, focused on livelihoods and shelter inputs accompanied with technical assistance, will be provided to support the safety, dignity and resilience of 325 families. The Emergency Appeal contributes to the overall PRC plan of action for their response to the earthquakes. The operation will be implemented within 14 months and is expected to be completed by 31 December 2020.

The geographical areas targeted by this operation are the most affected municipalities in the provinces of Davao del Sur (Bansalan, Hagonoy, Magsaysay and Matanao) and North Cotabato (Kidapawan, Makilala and Tulunan). With the revision following municipalities were prioritised for assistance; Matanao and Padada, as well as other surrounding locations that have been affected by the earthquake that struck on 15 December 2019. Emphasis is being placed on supporting those areas which are not being supported by other agencies; especially those in rural upland areas which were underserved prior to the earthquake. Priorities identified have also been based on the following criteria:

- poverty incidence
- province, city, municipality classification
- extent of damages to both shelter and livelihoods
- number of displaced families inside evacuation centres
- support or assistance received
- coping mechanisms

The operation is underpinned by a commitment to quality programming that involves:

- Continuous and in-depth assessments and analyses to inform the design and ongoing implementation of the programme.
- Ongoing process of adjustments based on these assessments.
- Adherence to protection, gender and inclusion (PGI) measures, with focus on disability inclusive development.
- Awareness of the impact of climate change and promotion of climate smart solutions as part of the operations, including their integration in trainings programs, as appropriate (health, livelihoods, shelter and WASH).
- Establishment of mechanisms to facilitate two-way communication with, and ensure transparency and accountability to, disaster-affected people, and highlighting the nature of communication and information as a life-saving mechanism. Establishment of mechanisms to facilitate two-way communication with, and ensure transparency and accountability to, disaster-affected people, highlighting with them the importance of communication to/with communities, and how information be lifesaving. Consultation is then had to determine their requirements around communication and information, before being integrated into the interventions.
- Alignment with migration and displacement policies, including the Movement Policy on Internal Displacement (2009).
- Management and delivery of the programme will be informed by appropriate monitoring and evaluation.
- Market assessments will be integrated with the in-depth assessment as cash-based interventions are being considered based on the needs and feasibility.
- A post-distribution monitoring exercise on cash-based interventions, particularly on the multi-purpose cash grant, to measure impact and timeliness of cash transfer programmes.

It is to be noted that the implementation of this Emergency Plan of Action is based on the funding received, the prioritization of interventions made in consultation with the government authorities and other agencies, as well as, and most critically the targeted families themselves.

## C. DETAILED OPERATIONAL PLAN



### Shelter

People reached: 12,500

Male: 6,250

Female: 6,250

**Shelter Outcome 1: Communities in disaster and crisis affected areas restore and strengthen their safety, well-being and longer-term recovery through shelter and settlement solutions**

Indicators:	Target	Actual
# of affected families in seven municipalities provided with essential household items and emergency shelter	3,000	2,500

**Shelter Output 1.1: Shelter and settlements and basic household items assistance is provided to the affected families.**

Indicators:	Target	Actual
# of affected families provided with sleeping kits (essential household items)	3,000	2,500
# of affected families provided with tarpaulins (emergency shelter)	3,000	2,500
# of affected families provided with shelter toolkits	1,500	cancelled
# of affected families provided with shelter assistance through conditional cash grants	79 <sup>6</sup>	37

### Progress towards outcomes

**Relief phase:** No new update as activities were already completed.

Relief phase has concluded where PRC provided essential household items to the affected population, especially those who were displaced in different evacuation centres. In Davao del Sur and North Cotabato, the PRC has provided 6,738 tarpaulins to 3,369 families (two tarpaulins per family). Of this number, 5,000 tarpaulins (2,500 families) or about 74 per cent of the items distributed were financed by the EA.

The PRC also provided at least 4,059 families with a sleeping kit (including two mats, two mosquito nets and two blankets). Approximately 62 per cent of these sleeping kits provided was funded by the EA (for 2,500 families).

#### Breakdown of families reached by PRC with IFRC support

Province	Municipality/City	Blankets	Mosquito Nets	Sleeping Mats	Tarpaulins
North Cotabato	Kidapawan City	464	386	464	149
	Makilala	1,012	1,012	1,012	946
Davao del Sur	Bansalan	339	339	339	339
	Digos City	120	120	120	120
	Hagonoy	158	158	158	-
	Kiblawan	410	410	410	-
	Magsaysay	766	766	766	766
	Matanao	868	868	868	925
	Padada	-	-	-	124
<b>Grand Total</b>		<b>4,137</b>	<b>4,059</b>	<b>4,137</b>	<b>3,369</b>

Note that the distribution of shelter tool kits will no longer be requested through the EA, as its being covered by contributions received from the ICRC. ICRC was able to distribute 2,320 shelter tool kits.

<sup>6</sup> Increased from 70 to 79.

## Early recovery

For early recovery shelter assistance in Davao del Sur and North Cotabato, a total of 79 families will be supported. This is an increase compared to the 70 targets based on the actual income and running fund balance. The increase of target was also based on the identification of priority needs and gaps following coordination efforts with Shelter Cluster and local government units (LGUs) in both provinces.

The LGU of Magsaysay provided the relocation site. Site plan was completed by the LGU's Planning Department, in coordination with PRC. For North Cotabato, apart from working with the engineering department from the LGU, there was also a close coordination with the Protected Area Management Board (PAMB) in the design, especially of latrines, as the relocation site is located near the water source for the whole municipality of Magpet.

The relocation site in North Cotabato is part of an Ancestral Domain, thus, to protect the rights of the beneficiaries, a CADT (certificate of Ancestral Domain Title) was secured from the Manobo Tribe. For Davao Del Sur, on the other hand, the LGU will provide a usufruct<sup>7</sup> agreement to the beneficiary, the agreement states that beneficiaries can stay and use the land for 20 years.

There was a constant consultation with the beneficiaries and the Barangay Recovery Committee (Barecom), to ensure community involvement in planning and design. Further, Beneficiaries and Barecom visited different hardware stores to discuss the following: (1) supplier's capacity to deliver materials at a given schedule; (2) payment terms; (3) quality and price of items. The identified suppliers were then presented to the community so everybody can agree as to where they can buy their materials. Engaging the community in every step of shelter activity foster acceptance and sense of ownership as their suggestions and heard and decisions recognized.

Only in August that delivery of construction materials was completed. The delay was significantly due to the threat of COVID-19 resulting to nationwide community quarantine. Due to this, activities were put on hold and movements were restricted as advised by the provincial government.

Prior to mass shelter construction, pilot shelter construction was first initiated in both Davao Del Sur and North Cotabato. Three families were used as a pilot to check the design, availability of the materials and training in build back better safe shelter. Beneficiaries and Barecom were present during the construction, - this allows them to be more familiar on the structure as they will be part of the monitoring team during the construction of other shelters. At the time of reporting, 37 out of 79 shelters were constructed.

The shelter construction support comprises:

- Conditional cash grants with a value of CHF 1,060 for the households to purchase shelter materials, such as lumber and hardware materials.
- Corrugated galvanised iron (CGI) sheets are provided in-kind with a value of CHF 120.
- The cost of carpenters and unskilled labour to build the shelters is CHF 280.
- A toilet and septic tank included with the shelter valued CHF 280.

PRC utilised pre-positioned stock of CGI sheets for the operations. Funding from the EA will be utilised to replenish the CGI sheets. Items are procured internationally by IFRC APRO Operation Logistics, Procurement and supply Chain Management (OLPSCM) department based in Kuala Lumpur Malaysia. Due to COVID-19 there has been some delays in the procurement process, items are expected arrive in country by end January 2021.



Ongoing construction in North Cotabato (Photo: IFRC)



Houses are being constructed (Photo: IFRC)

**Shelter Output 1.2: Technical support, guidance and awareness raising in safe shelter design and settlement planning and improved building techniques are provided to affected households**

<sup>7</sup> A usufruct is a legal right accorded to a person or party that confers the temporary right to use and derive income or benefit from someone else's property. ... While the usufructuary has the right to use the property, they cannot damage or destroy it or dispose of the property

Indicators:	Target	Actual
# of families with basic shelter awareness and 70 families with technical support and guidance on safe recovery shelter.	2,500 <sup>8</sup> ; and 70 <sup>9</sup>	79
# of carpenters provided with technical support and guidance, appropriate to the shelter assistance they provide	20 <sup>10</sup>	40
# of volunteers and staff provided with technical support and guidance, appropriate to the shelter assistance they provide	50	22
<b>Progress towards outcomes</b>		
<p>As noted above, the number of targeted families for early recovery shelter assistance has been reduced from 325 to 70. As a result, the number of carpenters required for the intervention has been reduced from 75 to 20 accordingly.</p> <p>A total of 79 households were identified for shelter support. Families were provided safe shelter awareness training and orientation prior to the construction. The training was attended by both male and female representative from each household – this way, both genders will be able to air their concerns regarding delivery and construction which are salient parts for discussion. Training is done to ensure that beneficiaries understand details, where beneficiaries will be able to monitor construction and be able to fix their homes when damaged. Part of the training were: (1) safe location for shelter construction; (2) identification of material with good quality; (3) safe shelter construction.</p> <p>In addition, volunteers and carpenters obtained the same training prior to construction to ensure that everybody understands safe shelter construction techniques. In total, 40 carpenters and 22 staff and volunteers were mobilized and were oriented about the safe shelter awareness.</p>		



## Livelihoods and basic needs

People reached: 18,493

Male: 7,552

Female: 7,552

### Livelihoods and basic needs Outcome 1: Communities, especially in disaster and crisis affected areas, restore and strengthen their livelihoods

Indicators:	Target	Actual
# of affected families able to meet their basic needs (with cash transfers for one month)	3,000	1,457
# of affected families whose livelihoods are restored to pre-disaster level (household livelihood assistance)	900 <sup>11</sup>	897
<b>Livelihoods and basic needs Output 1.2: Basic needs assistance for livelihoods security including food is provided to the most affected communities</b>		
Indicators:	Target	Actual
# of hot meals provided	6,000	18,493
# of communal kitchen units installed in evacuation centres	13	13
<b>Progress towards outcomes</b>		
<p>Since the earthquakes, PRC has served a total of 18,493 people with hot meals, all funded by the EA. Total of 4,970 families were provided with food parcels (one per family) in Davao del Sur and North Cotabato, of which 1,951 parcels were financed by the IFRC. Each food parcel included 5kgs of rice, five canned goods and five noodle packs.</p>		

<sup>8</sup> Reduced from 3,000 to 2,500.

<sup>9</sup> Reduced from 325 to 70.

<sup>10</sup> Reduced from 75 to 20.

<sup>11</sup> Increased from 325 to 900.

To reduce the risk of fire and ensure the safety of families when cooking, 13 units of communal kitchens were constructed in six different evacuation areas in Davao del Sur and North Cotabato. The shared kitchens include drainage and waste disposal facilities.

**Breakdown of evacuation sites where PRC constructed communal kitchens**

Province	Municipality/City	Place Name	Quantity
North Cotabato	Makilala	Santos Land Evacuation Centre	2
	Makilala	Luayon Evacuation Centre	2
Davao del Sur	Digos City	Balabag Evacuation Centre	2
	Magsaysay	San Miguel Evacuation Centre	3
	Magsaysay	Upper Bala	2
	Matanao	Asinan Evacuation Centre	2

**Livelihoods and basic needs Output 1.3: Household livelihoods security is enhanced through food production, increased productivity and post-harvest management (agriculture-based livelihoods)**

Indicators:	Target	Actual
<i># of affected families reached with awareness activities and education on sustainable livelihoods through CMLP and HLA</i>	900 <sup>12</sup>	897
<i># of affected families provided with conditional cash grants through HLA (same as above recipients of CMLP and HLA)</i>	900 <sup>13</sup>	897
<i># of communities receiving support through the CMLP that report improved net income through skill building</i>	TBD	cancelled

**Progress towards outcomes**

Communities depend mostly on farming to generate income. Most are engaged in planting rice, corn and vegetables while others harvest fruit. The earthquake greatly affected their livelihood as most of the areas were eroded during the quake. Farmers have limited land to till and farm labourers are left with little to no job. To be able to earn while in evacuation camps, families resorted to petty trading while others have to do manual and unskilled labour. Earning is even more challenging for them today due to movement restrictions brought about by the pandemic.

To date, a total of 897 households were identified for HLA – 628 of whom received the complete grant while the remaining is scheduled for distribution the month of November 2020. Prior to the cash disbursements, beneficiaries went through livelihood trainings and orientations. The purpose of the trainings were to provide selected people with different livelihood options, its market and its sustainability. Municipal agriculture Office, DTI, Municipal veterinary Office and municipal tourism provided orientation for recipients.

Few points have to be taken into consideration during proposal generation. Those who wanted hog raising were discouraged by the Veterinary Office due to the threat of ASF (African Swine Fever). In addition, those who proposed farming had to ensure the land they will till is safe and not prone for landslide. In protected areas, the agriculture office prohibited the use of harmful fertilizers as it may contaminate the water source in the whole municipality. Other beneficiaries whose farms were eroded resorted to renting an area where they can plant their vegetables and sell them once harvested.

Constant meetings were done to raise the community's concern regarding their livelihood. During the meeting, it was noted that, even during disasters most families would not leave their land because they have to look after their animals and crops. Due to this concern, the LGU through the agriculture office made an orientation for crop and livestock insurance. A representative from the LGU taught the community on how to apply and fill in forms. In addition, they have also expressed their concern of marketing their produce given the current situation where movements are restricted. Due to this, it was agreed by both LGU and the community that once supplies are available, LGU will contact suppliers and suppliers in return, will pick the items in the community, thus, there is no need for the beneficiaries to go to the market to sell their produce.

It is to be noted that the implementation of this Emergency Plan of Action is based on the funding received, the prioritization of interventions made in consultation with the government authorities and other agencies, as well as, and most critically the targeted families themselves. Due to funding availability, community-managed livelihood programme (CMLP) will be cancelled. On the other hand, part of the strategies in ensuring that sustainable livelihood is being implemented, is the support provided to the communities when they have suggested to form a savings group out from the HLA support they have received. Some decided to form a savings group where half of the grant

<sup>12</sup> Increased from 325 to 900.

<sup>13</sup> Increased from 325 to 900.

they will be receiving is intended to fund the group while the other half will be for their individual proposals. The Philippine Red Cross and the LGU assisted these beneficiaries to make a group proposal as well as registering them to Department of Labor and Employment (DOLE). Due to this initiative, some private organizations already expressed their desire to assist the groups through the provision of additional funds.

**Livelihoods and basic needs Output 1.5: Households are provided with unconditional/multipurpose cash grants to address their basic needs**

Indicators:	Target	Actual
# of affected families provided with multipurpose cash grants to address their basic needs	1,457 <sup>14</sup>	1,457

**Progress towards outcomes**

Affected families previously identified received cash support to secure their immediate needs. The cash was distributed to families using a pre-identified financial service provider, which was previously used by PRC for another operation. Each family received a sum of PHP 3,500 (approximately CHF 70), to help them meet their basic needs for one month. This amount was based on the Minimum Expenditure Basket calculated in coordination with the Cash Working Group; and triangulated with DOLE. The distribution was originally scheduled for mid-December 2019. However, due to weather disruptions and additional operations, the distribution was delayed until end of January 2020. The distribution has been completed, and final recipient lists were confirmed. A post distribution monitoring exercise will be initiated to identify the use of the cash assistance by the affected families, and their satisfaction with the approach used. Note that the number of families targeted with cash assistance has been reduced from 3,000 to 1,457 based on the income received into the EA.

**Breakdown of families provided with cash assistance**

Province	Municipality	Number of identified beneficiaries
Davao del Sur	Makilala	734
North Cotabato	Magsaysay	723
<b>Total</b>		<b>1,457</b>



**Health**

People reached: 34,176

Male: 17,088

Female: 17,088

**Health Outcome 1: The immediate risks to the health of affected populations are reduced**

Indicators:	Target	Actual
# of people reached through National Society emergency health management programmes	17,500	34,176 <sup>15</sup>

**Health Output 1.1: The health situation and immediate risks are assessed using agreed guidelines**

Indicators:	Target	Actual
# of health assessments carried	2	2

**Progress towards outcomes**

Health needs were assessed during the RDNA, confirming the need for first aid and psychosocial support. The results of the in-depth assessments conducted at the end of November 2019, including the damaged health infrastructure, helped to refine the response strategy.

**Health Outcome 2: The immediate risks to the health of the affected populations are reduced through improved access to medical treatment**

<sup>14</sup> Reduced from 3,000 targeted families based on income received into the Appeal.

<sup>15</sup> 14,214 patients catered in EMUs + 12,500 for community-based epidemic prevention and control activities + 7,462 for PSS.

Indicators:	Target	Actual
# of ambulances mobilized to provide immediate transportation of patients	8	8
# of people assisted with blood pressure (BP) readings	-	973
# of people provided with first aid	-	99
# of volunteers mobilized to support immediate health related activities	25	10 <sup>16</sup>
# of families provided with first aid kits	200	-
# of chapters provided with chapter first aid kits (jump kits)	3	-
# of patients catered through Emergency Medical Units, run by PRC	102	14,214

#### Progress towards outcomes

Response phase now completed. The PRC had set up 16 first aid stations, funded by the Emergency Appeal, helped 91 people with first aid and assisted 777 with their blood pressure readings since the start of the emergency operation. Eight ambulances were mobilized in Compostella Valley, General Santos, Davao City, Cotabato City, Davao Del Sur, Dipolog and South Cotabato and 11 people were assisted, and transported to nearby hospitals.

At the request of the local government and the DOH, PRC set up five Emergency Medical Units (EMUs) in Kidapawan City, North Cotabato to deal with the health problems caused by the closure of several hospitals in Mindanao. There were 14,214 patients treated in the EMUs.

More details can be found in the previous [operations update](#).

#### Health Outcome 4: Transmission of diseases of epidemic potential is reduced

Indicators:	Target	Actual
# of people reached with community-based epidemic prevention and control activities including vaccine preventable diseases information and referral services	17,500	12,500 <sup>17</sup>

#### Health Output 4.1: Community-based disease control and health promotion is provided to the target population

Indicators:	Target	Actual
# of volunteers provided with health-related trainings	120	not started
# of women provided with mother and new-born baby kits	500	cancelled

#### Progress towards outcomes



PRC conducts monthly disinfection in the evacuation sites as a preventive measure to stop the spread of COVID-19, (Photo: PRC)

<sup>16</sup> Ten volunteers per day is supporting the operation inside the EMU.

<sup>17</sup> People reached with mosquito nets and messages on epidemic prevention and control.

The distribution of mother and new-born baby kits has been cancelled, as this is now being covered by other partner organizations responding to the Mindanao Earthquakes. Health related training will no longer be happening through this appeal, but under the COVID-19 response.

Due to the threat by COVID-19 pandemic, information dissemination about COVID-19 was conducted in 13 evacuation centres, reaching 1,477 families. Since March, there was also a regular monthly disinfection conducted in the evacuation centres supported by the chapter. COVID-19 related information was incorporated to activities to ensure safety of staff, volunteers and recipients of assistance. Furthermore, staff and volunteers were provided with adequate Personal Protective Equipment (PPE) for continuing operations on the ground.

#### Health Output 4.2: Vector-borne diseases are prevented

Indicators:	Target	Actual
# of families received mosquito nets	3,000	2,500

#### Progress towards outcomes

This output was concluded during the Relief phase where 8,118 mosquito nets were distributed, of which 5,000 (2,500 families) or 60 per cent from the overall distribution were financed by the EA.

More details can be found in the previous [operations update](#).

#### Health Outcome 6: The psychosocial impacts of the emergency are lessened

##### Health Output 6.1: Psychosocial support provided to the target population as well as to RCRC volunteers and staff

Indicators:	Target	Actual
# of people provided with psychosocial support	Need based	7,462

#### Progress towards outcomes

This output was concluded during the Relief phase where to help affected families, 13 welfare desks were set up in evacuation centres (one in each). Welfare desks assist displaced people with: i) restoring family links (RFL); (ii) tracing; (iii) inquiry and communications; (iv) contact of relatives; and (v) referral.

The psychosocial support programme, financed by the Emergency Appeal reached 7,462 people. Of these, 2,777 people received psychological first aid assistance and 4,685 children participated in child friendly space activities.

More details can be found in the previous [operations update](#).



### Water, sanitation and hygiene

People reached: 38,444

Male: 19,222

Female: 19,222

#### WASH Outcome 1: Immediate reduction in risk of waterborne and water related diseases in targeted communities

Indicators:	Target	Actual
# of people provided with safe water services that meet agreed standards according to specific operational and programmatic context	40,500	38,444 <sup>18</sup>

<sup>18</sup> The number of people served with distributed water is an estimate and should be viewed with caution at this time. These may change when aggregated data on the scope of water sanitation services from other partners in the same evacuation centres becomes available and validated. The IFRC and its partners are dedicated and aim to meet the Sphere minimum standards.

# of people provided with hygiene promotion aimed at reducing the risk of waterborne and water related diseases	40,500	13,781
<b>WASH Output 1.1: Continuous assessment of water, sanitation, and hygiene situation is carried out in targeted communities</b>		
<b>Indicators:</b>	<b>Target</b>	<b>Actual</b>
Initial assessment of water, sanitation and hygiene situation conducted	1	1
<b>Progress towards outcomes</b>		
<p>WASH-related needs were assessed during the RDANA. PRC identified several problems such as some non-functional water systems and some non-potable sources of water in some areas. Furthermore, its noted that families have limited knowledge on water treatment. Since the establishment of the evacuation centres, PRC has closely monitored several of them (currently 60 per cent), including conducting WASH assessments and carrying out water analysis.</p> <p>PRC staff and volunteers conducted monitoring of the situation in evacuation centres and reinforced the need to ensure available access to water and hygiene facilities with key stakeholders. There was monitoring to ensure that evacuation centres have water sources and hygiene items considering the threat from COVID-19.</p> <p>Based on the monitoring done, it was found that during the community quarantine, water rationing from the government and other agencies were limited. Thus, PRC was requested to cover the other water rationing schedules in different evacuation centres. PRC provided water ration till the third quarter of 2020. Data is being compiled, will be reported in the final report. PRC also conducted an information dissemination session about COVID-19 and on the importance of handwashing as a mitigating measure to halt the spread of the disease. Furthermore, since there were no specific protocols from the local government unit regarding COVID-19 in evacuation centre setting, PRC advocated the need to put up handwashing units in all the evacuation centres and to set up isolation tents.</p>		
<b>WASH Output 1.2: Daily access to safe water which meets Sphere and WHO standards in terms of quantity and quality is provided to target population</b>		
<b>Indicators:</b>	<b>Target</b>	<b>Actual</b>
# of mass water treatment, storage and transport modules deployed	1	2
# of litres of safe water distributed	-	4,572,326
# of families provided with jerry cans (10L)	3,000	2,000
<b>Progress towards outcomes</b>		
<p>This output was concluded when response phase for the distribution of jerry cans completed. To meet immediate water needs, PRC installed 18 water bladders for water supply in North Cotabato (barangays Ilumavis and Hinalitan, Kidapawan city), and Davao del Sur (Barangays Balnate and San Miguel; Magsaysay). Five water tankers (Davao City, General Santos, Iligan and NHQ) and two water treatment units (Davao City and General Santos) were also mobilized to support water supply. A total of 3,676 families received jerry cans (20L and 10L) in Davao del Sur and North Cotabato, including the distribution of 4,000 jerry cans (10L) to 2,000 families through the Appeal. A total of 4,572,326 litres of water were also distributed by PRC to 38,44412 people at collecting points in Davao del Sur and North Cotabato. Water supply activities have been funded by the Emergency Appeal. PRC volunteers have provided sensitization on safe water storage and utilization at the point of distribution</p> <p>More details can be found in the previous <a href="#">operations update</a>.</p>		
<b>WASH Output 1.3: Improved access to and use of adequate sanitation is provided to target population</b>		
<b>Indicators:</b>	<b>Target</b>	<b>Actual</b>
# of people who benefitted from the sanitation facilities in selected evacuation centres	7,500	17,949 <sup>19</sup>
# of latrines provided	73	65
# of shower facilities provided	30	26
# of handwashing stations provided	-	65
<b>Progress towards outcomes</b>		

<sup>19</sup> The number of people served with latrines and showers is an estimate and should be viewed with caution at this time. These may change when aggregated data on the scope of water sanitation services from other partners in the same evacuation centres becomes and validated. The IFRC and its partners are dedicated and aim to meet the Sphere minimum standards.

This output was concluded during response phase. PRC installed 65 portable toilets (serving up to 15,223 people) with 65 handwashing stations and 26 shower facilities all funded through the Emergency Appeal, an additional 8 transitional toilets (serving up to 1,172 people) as well as 41 water collecting points, also in Davao del Sur and North Cotabato. Note that the sanitation facilities installed by PRC have been complemented by those provided by the authorities and partner organizations that are operating in the camps to ensure that service provision is in accordance with the minimum standards for excreta disposal.

**WASH Output 1.4: Hygiene promotion activities which meet Sphere standards in terms of the identification and use of hygiene items provided to target population**

Indicators:	Target	Actual
# of people reached by hygiene promotion activities	40,500	13,781
# of volunteers involved in hygiene promotion activities	20	-

**Progress towards outcomes**

This output was concluded during response phase. The PRC WASH unit conducted hygiene promotion activities with 13,781 people. The key topics and messages conveyed during the emergency phase are hygiene practices, solid and waste management, and diarrhoea prevention.

**WASH Output 1.5: Hygiene-related goods (NFIs) which meet Sphere standards and training on how to use those goods is provided to the target population**

Indicators:	Target	Actual
# of families provided with hygiene kits	3,000	2,200

**Progress towards outcomes**

This output was concluded during response phase. A total of 3,572 families were provided with hygiene kits in Davao Del Sur and North Cotabato. Each hygiene kit includes 12 pieces of body soap, five laundry soaps, 40 sanitary pads, five bath towels, six rolls of toilet paper, three toothpaste tubes, five toothbrushes and four disposable razors. Of these hygiene kits provided to families, 2,200 were funded by the Emergency Appeal.

More details can be found in the previous [operations update](#).



**Protection, Gender and Inclusion**

People reached: 38,444

Male: 19,222

Female: 19,222

**Protection, Gender & Inclusion Outcome 1: Communities identify the needs of the most vulnerable and particularly disadvantaged and marginalised groups, as a result of inequality, discrimination and other non-respect of their human rights and address their distinct needs**

Indicators:	Target	Actual
# of people provided with any Protection, Gender and inclusion (PGI) services	10,000	38,444

**Protection, Gender & Inclusion Output 1.1: Programmes and operations ensure safe and equitable provision of basic services, considering different needs based on gender and other diversity factors**

Indicators:	Target	Actual
# of children provided with safe educational space in temporary learning centres	-	2,267
# of teachers provided with training on safe teaching and alternative delivery methods	120	-
# of children provided with school kits	1,000	cancelled

**Progress towards outcomes**

No new update as of reporting. As highlighted in previous updates, in November 2019, PRC deployed 10 temporary learning spaces (TLS) in the two most affected provinces, North Cotabato and Davao del Sur, to ensure the continuity of education where schools had been damaged. About 1,000 schools had been damaged by the earthquakes. Indirectly, all people supported in this operation has been provided with different services based on protection, gender and inclusion (PGI) considerations and standards.

The distribution of school kits had been cancelled, as they're covered by other partner organizations responding to the Mindanao Earthquakes.

More details can be found in the previous [operations update](#).

**Protection, Gender & Inclusion Output 1.2: Emergency response operations prevent and respond to sexual- and gender-based violence and all forms of violence against children.**

Indicators:	Target	Actual
# of staff and volunteers provided with training on SGBV	20	22
# of staff and volunteers provided with training on PGI linked to internal displacement	20	22

**Progress towards outcomes**

PRC welfare team conducted a one-day orientation to 22 (14 females and eight males) staff and volunteers on Protection, Gender and Inclusion on 21 February in Kidapawan City, North Cotabato chapter. Topics discussed were:

- PGI legal framework (PRC Strategic Plan 2020)
- Child Protection Policy overview
- Disability Inclusion programme overview
- Gender and Diversity programme overview
- SGBV Standard Operating Procedure
- PGI mainstreaming (Dignity, Access, Participation and Safety)

More details can be found in the previous [operations update](#).



**Migration**

People reached: 38,444

Male: 19,222

Female: 19,222

**Migration Outcome 1: Communities support the needs of migrants and their families and those assisting migrants at all stages of migration (origin, transit and destination)**

Indicators:	Target	Actual
# of people reached with services for migration assistance and protection	40,500	38,444

**Migration Output 1.1: Assistance and protection services to migrants and their families are provided and promoted through engagement with local and national authorities as well as in partnership with other relevant organizations.**

Indicators:	Target	Actual
Displaced people reached with information and quality services by welfare desks	Yes	Yes

**Progress towards outcomes**

No new update as of reporting. As highlighted in previous updates, displaced communities staying in 13 evacuation centres were supported through the Welfare desks of the PRC with services such as i) Restoring Family Links (RFL); (ii) tracing; (iii) inquiry and communications; (iv) contact of relatives and (v) referral.

Displaced communities in different evacuation centres were also supported with psychosocial support (PSS), food, water, health and hygiene promotion activities, essential household items and emergency shelter materials, as well as access to communal kitchen and sanitation facilities. PGI support for displaced communities also included temporary learning spaces, child friendly spaces and specific PSS activities for displaced children.

Through the Emergency Appeal, PRC also supported health and hygiene promotion activities. An estimated 38,444 displaced people have been reached through this operation.

**Migration Output 1.3: “Family links are restored for people separated from, or without news of, their loved ones as a result of the disaster”**

Indicators:	Target	Actual
# of welfare desks providing RFL services in the disaster affected areas.	-	13

**Progress towards outcomes**

No new update as of reporting. As highlighted in previous updates, displaced communities staying in 13 evacuation centres were supported through the welfare desks of the PRC with services such as i) Restoring Family Links (RFL); (ii) tracing; (iii) inquiry and communications; (iv) contact of relatives and (v) referral. PRC established two RFL stations, facilitated one tracing request and four people re-established contact with relatives through free PRC-RFL calls. PRC partnered with SMART telecommunication by lending of two mobile phones, two satellite phones and two Wi-Fi hotspots as well as pre-paid credits for free calls. Volunteers and staff were also provided with load credits to ensure connectivity



**Disaster Risk Reduction**

People reached<sup>20</sup>: TBC based on planning

Female:

Male:

**DRR Outcome 1: Communities in high risk areas are prepared for and able to respond to disaster**

Indicators:	Target	Actual
# of communities reached through RCRC programmes for DRR and community resilience (excluding public awareness and education campaigns)	TBD	-

**DRR Output 1.1: Communities take active steps to strengthen their preparedness for timely and effective response to disasters.**

Indicators:	Target	Actual
# of community DRRM plans updated/reviewed	TBD	planned
# of Red Cross 143 recruited	TBD	planned
# of Red Cross 143 provided with training	TBD	planned

**Progress towards outcomes**

No new update as of reporting, remains in planning.

**DRR Outcome 2: Communities in disaster and crisis affected areas adopt climate risk informed and environmentally responsible values and practices**

Indicators:	Target	Actual
# of communities adopted climate risk informed and environmentally responsible approaches	TBD	cancelled

<sup>20</sup> Reference to the counting people reached guidance.

<b>DRR Output 2.1: Contributions to climate change mitigation are made by implementing green solutions</b>		
<b>Indicators:</b>	<b>Target</b>	<b>Actual</b>
# of green response activities supported	TBD	cancelled
<b>Progress towards outcomes</b>		
No new update as of reporting; cancelled based on funding received.		
<b>DRR Output 2.2: Community awareness raising programmes on climate changing risks and environmentally responsible practices are conducted in target communities</b>		
<b>Indicators:</b>	<b>Target</b>	<b>Actual</b>
<i># of communities that have implemented activities that contribute to climate change adaptation</i>	TBD	cancelled
<i># of people reached by climate change mitigation and environmental sustainability awareness raising campaigns</i>	TBD	cancelled
<b>Progress towards outcomes</b>		
No new update as of reporting; cancelled based on funding received.		

Please refer to [Operations Update No.1](#) and [Operations Update No. 2](#) for details on all Strategies for Implementation, which remain unchanged at the time of writing.

## **D. FINANCIAL REPORT**

The appeal budget is CHF 2.70 million. As of the date of the publication of this report, the [appeal coverage](#) is 47 per cent. The expenditure as of 31 October 2020 closing is CHF 938,380 (65 per cent of income). Please refer to the financial report at the end of this document for more details. (Click [here](#))

## Contact information

### Reference documents

Click here for:

- [Previous Appeals and updates](#)
- [Emergency Plan of Action \(EPoA\)](#)

**For further information, specifically related to this operation please contact:**

#### In the Philippine Red Cross

- Elizabeth Zavalla, secretary general; email: [elizabeth.zavalla@redcross.org.ph](mailto:elizabeth.zavalla@redcross.org.ph)
- Leonardo Ebajo, director for disaster management services; email: [leonardo.ebajo@redcross.org.ph](mailto:leonardo.ebajo@redcross.org.ph)

#### In the IFRC Philippine Country Office

- Robert Kaufman, head of country office; phone: +63 998 585 0794, email: [robert.kaufman@ifrc.org](mailto:robert.kaufman@ifrc.org)
- Patrick Elliot, acting head of country office; phone: +63 998 961 2140; email: [patrick.elliott@ifrc.org](mailto:patrick.elliott@ifrc.org)
- Radhika Fernando, interim operations manager; phone: +63 998 960 6284; email: [radhika.fernado@ifrc.org](mailto:radhika.fernado@ifrc.org)

#### In IFRC Asia Pacific Regional Office, Kuala Lumpur

- Alexander Matheou, regional director; email: <mailto:alexander.matheou@ifrc.org>
- Gwendolyn Pang, deputy regional director; email: [gwendolyn.pang@ifrc.org](mailto:gwendolyn.pang@ifrc.org)
- Necephor Mghendi, head of disaster and crises unit; email: [necephor.mghendi@ifrc.org](mailto:necephor.mghendi@ifrc.org)
- Nur Hayati Ahmad, operations coordinator; email: [OpsCoord.SouthEastAsia@ifrc.org](mailto:OpsCoord.SouthEastAsia@ifrc.org)
- Siokkun Jang, logistics manager, email: [siokkun.jang@ifrc.org](mailto:siokkun.jang@ifrc.org)
- Antony Balmain, Communications Manager; phone: +60-12-230-8451; email: [antony.balmain@ifrc.org](mailto:antony.balmain@ifrc.org)

#### In IFRC Geneva

- Nelson Castano, operations coordination manager; email: <mailto:nelson.castano@ifrc.org>
- Christina Duschl, senior officer, operations coordination; email: [christina.duschl@ifrc.org](mailto:christina.duschl@ifrc.org)

#### For resource mobilization and pledges

- **In IFRC Asia Pacific Regional Office:** Alice Ho, partnership in emergencies coordinator; email: [partnershipsEA.AP@ifrc.org](mailto:partnershipsEA.AP@ifrc.org)

#### For planning, monitoring, evaluation and reporting (PMER) enquiries

- **In IFRC Asia Pacific Regional Office:** Siew Hui Liew, PMER manager; email: [siewhui.liew@ifrc.org](mailto:siewhui.liew@ifrc.org)

## How we work

All IFRC assistance seeks to adhere to the Code of Conduct for the International Red Cross and Red Crescent Movement and Non-Governmental Organizations (NGOs) in Disaster Relief and the Humanitarian Charter and Minimum Standards in Humanitarian Response (Sphere) in delivering assistance to the most vulnerable. The IFRC's vision is to inspire, **encourage, facilitate and promote at all times all forms of humanitarian activities** by National Societies, with a view to **preventing and alleviating human suffering**, and thereby contributing to the maintenance and promotion of human dignity and peace in the world.

The IFRC's work is guided by Strategy 2020 which puts forward three strategic aims:



**Save lives.**  
protect livelihoods,  
and strengthen recovery  
from disaster and crises.



Enable **healthy**  
and **safe** living.



Promote **social inclusion**  
and a culture of  
**non-violence** and **peace**.

# Emergency Appeal

INTERIM FINANCIAL REPORT

Selected Parameters			
Reporting Timeframe	2019/10-2020/10	Operation	MDRPH036
Budget Timeframe	2019/10-2020/12	Budget	APPROVED

Prepared on 21 Dec 2020

All figures are in Swiss Francs (CHF)

## MDRPH036 - Philippines - Mindanao Earthquakes

Operating Timeframe: 31 Oct 2019 to 31 Dec 2020; appeal launch date: 03 Nov 2019

### I. Emergency Appeal Funding Requirements

Thematic Area Code	Requirements CHF
AOF1 - Disaster risk reduction	50,000
AOF2 - Shelter	1,000,000
AOF3 - Livelihoods and basic needs	500,000
AOF4 - Health	300,000
AOF5 - Water, sanitation and hygiene	400,000
AOF6 - Protection, Gender & Inclusion	75,000
AOF7 - Migration	30,000
SFI1 - Strengthen National Societies	120,000
SFI2 - Effective international disaster management	225,000
SFI3 - Influence others as leading strategic partners	0
SFI4 - Ensure a strong IFRC	0
<b>Total Funding Requirements</b>	<b>2,700,000</b>
<b>Donor Response* as per 21 Dec 2020</b>	<b>1,267,762</b>
<b>Appeal Coverage</b>	<b>46.95%</b>

### II. IFRC Operating Budget Implementation

Thematic Area Code	Budget	Expenditure	Variance
AOF1 - Disaster risk reduction	54,256	66,766	-12,511
AOF2 - Shelter	563,637	335,054	228,582
AOF3 - Livelihoods and basic needs	299,869	283,598	16,271
AOF4 - Health	164,846	84,123	80,723
AOF5 - Water, sanitation and hygiene	205,758	100,938	104,820
AOF6 - Protection, Gender & Inclusion	11,824	969	10,854
AOF7 - Migration	1,044	0	1,044
SFI1 - Strengthen National Societies	43,796	6,657	37,139
SFI2 - Effective international disaster management	82,724	60,195	22,529
SFI3 - Influence others as leading strategic partners	14,250	0	14,250
SFI4 - Ensure a strong IFRC	759	79	679
<b>Grand Total</b>	<b>1,442,761</b>	<b>938,380</b>	<b>504,381</b>

### III. Operating Movement & Closing Balance per 2020/10

Opening Balance	0
Income (includes outstanding DREF Loan per IV.)	1,442,762
Expenditure	-938,380
<b>Closing Balance</b>	<b>504,383</b>
Deferred Income	0
Funds Available	504,383

### IV. DREF Loan

* not included in Donor Response	Loan :	398,467	Reimbursed :	223,467	<b>Outstanding :</b>	<b>175,000</b>
----------------------------------	--------	---------	--------------	---------	----------------------	----------------

# Emergency Appeal

INTERIM FINANCIAL REPORT

Selected Parameters			
Reporting Timeframe	2019/10-2020/10	Operation	MDRPH036
Budget Timeframe	2019/10-2020/12	Budget	APPROVED

Prepared on 21 Dec 2020

All figures are in Swiss Francs (CHF)

## MDRPH036 - Philippines - Mindanao Earthquakes

Operating Timeframe: 31 Oct 2019 to 31 Dec 2020; appeal launch date: 03 Nov 2019

### V. Contributions by Donor and Other Income

Opening Balance							0
Income Type	Cash	InKind Goods	InKind Personnel	Other Income	TOTAL	Deferred Income	
American Red Cross	370,826				370,826		
British Red Cross	100,374				100,374		
China Red Cross, Hong Kong branch	25,203				25,203		
DREF Allocations				175,000	175,000		
Finnish Red Cross	53,255				53,255		
Japanese Red Cross Society	89,100				89,100		
Red Cross of Monaco	10,817				10,817		
Spanish Government	110,120				110,120		
Swedish Red Cross	207,876				207,876		
The Canadian Red Cross Society	30,360				30,360		
The Canadian Red Cross Society (from Canadian Gov	96,693				96,693		
The Netherlands Red Cross (from Netherlands Govern	148,138				148,138		
Turkish Red Crescent Society	25,000				25,000		
<b>Total Contributions and Other Income</b>	<b>1,267,762</b>	<b>0</b>	<b>0</b>	<b>175,000</b>	<b>1,442,762</b>	<b>0</b>	
<b>Total Income and Deferred Income</b>					<b>1,442,762</b>	<b>0</b>	