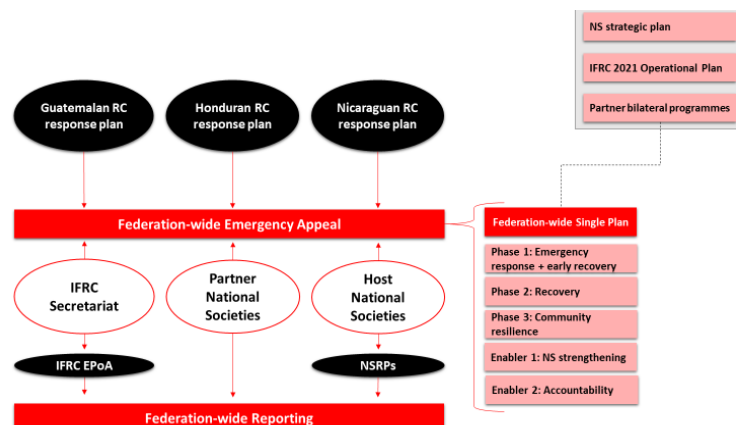


Emergency Plan of Action (EPoA)

Nicaragua: Hurricanes Eta and Iota

Emergency Appeal N° MDR43007	Glide N°:	<u>TC-2020-000218-NIC</u>	
Date of issue: 22 December 2020			
Emergency Appeal launch: 8 November 2020	Expected timeframe:	18 months	
	Expected end date:	31 May 2022	
IFRC Category allocated to the of the disaster or crisis: Orange			
IFRC funding requirements: 5,013,270 Swiss francs (CHF)			
National Society Response Plan funding requirements: 14,000,000 American dollars (USD)			
DREF allocated: 440,000 CHF			
Number of exposed people:	Over 3 million people	Number of people to be assisted	This EPoA: 42,500 people (8,500 families) Total NS response: 60,000 people (12,000 families)
Municipalities affected:	56	Regions targeted:	Municipalities of Puerto Cabezas, Waspam, and Prinzapolka in the North Atlantic Region, and Jinotega, Rivas, Bluefields and Managua regions.
Host National Societies presence: The Nicaraguan Red Cross has 1500 volunteers activated for the NS response in the whole country in addition to 500 staff in 32 branches, active particularly in Puerto Cabezas and Bonanza, in the Caribe Norte region.			
Red Cross Red Crescent Movement partners actively involved in the operation: International Federation of the Red Cross (IFRC), International Committee of the Red Cross (ICRC), Spanish Red Cross (SRC) and Italian Red Cross (IRC)			
Other partner organizations actively involved in the operation: National System for the Prevention, Mitigation of, and Attention to Disasters (SINAPRED), Ministry of Health (MINSAs), World Vision, Nestle, Walmart, Fideicomiso Juntos Vamos a Superarlo, American Nicaraguan Foundation (ANF), Walmart Foundation (Banco de Alimentos), World Food Program, Banpro, Aceitera de Nicaragua.			

This EPoA is a part of a broader Federation-wide approach to this emergency response. It outlines the multilateral activities for Nicaragua supported by the IFRC secretariat's funding ask in the IFRC Emergency Appeal. As part of this membership coordinated approach, which is detailed in the following diagram, a Federation-wide Single Plan and reporting mechanism is being developed at the regional level based on the Response Plans from Nicaraguan Red Cross and other affected National Societies, and in consultation with all Federation members contributing to the response. This Plan will ensure linkages between all response activities (including bilateral activities and activities funded domestically), establish a best-practice



model for good coordination and assist to leverage the capacities of all members of the Federation in the country, to maximise the collective humanitarian impact.

A. Situation Analysis

Nicaragua is the largest country in Central America, and it is located in the "ring of fire" that surrounds the Pacific Ocean and traces the contact zone of the Coconut and Caribbean plates. In the last 30 years, seven major hurricanes and five tropical storms have hit the country, of which Fifi (September 1974) Joan (October 1988) and Mitch (October 1998) were tremendously devastating.

For most regions, the orographic characteristics of the Nicaraguan territory, with mountain ranges in the center of the country, have contributed to significantly reduce the force of hurricanes, but the heavy rains that follow these phenomena usually cause severe flooding. Droughts, associated with the El Niño phenomenon, generally damage the Pacific, northern and central regions.

In 2017 the Nicaraguan economy maintained a good growth rate of 4.6 percent¹. Due to the social and political unrest that the country has experienced since April 2018, the economy contracted to -4.0 and -3.9 percent in 2018 and 2019, respectively.

The COVID-19 (Coronavirus) pandemic plus the violence that has prevailed in the last years, job losses, a fall in consumer and business confidence, and a decline in labor intensive sectors such as construction, commerce and tourism have taken a social and economic toll, further halting the progress achieved in poverty reduction since 2005. The pandemic is expected to adversely affect Nicaragua through declined remittance inflows, reduced trade, paralyzed tourism, and increased risk premiums, partially offset by lower oil prices.

Description of the disaster

Nicaragua was exposed to two major meteorological events within a period of 14-days. Hurricane Eta, a category 4 storm, impacted the Northern Caribbean coast on November 3, and Hurricane Iota, a category 5 storm, impacted the same area on November 16 and extended to the Pacific side, leaving severe damage in the region, including loss of lives.

Hurricane Eta hit the Northern Caribbean Coast of Nicaragua on November 3 as a category 4 with winds of 240 kilometers per hour, with a lifespan of over 30 hours it had a strong impact in the community of Wawa Bar in the Southwest of the city of Puerto Cabezas, Bilwi². After Eta, SINAPRED estimated that over 2 million people were exposed to this storm.

As preventive measure, SINAPRED and the different response mechanisms in country, including the Nicaraguan RC evacuated nearly 70,000 people and opened 325 collective centres. A Red alert was activated for the Caribbean Region, yellow alert for the departments of Wiwili, Jinotega, Nueva Segovia, Matagalpa, and Chinandega. The rest of the country was in green alert. The Pacific region was also affected by torrential rains that caused landslides and more than 300 collective centers and foster or host homes were activated to shelter families.

On November 16, **Hurricane Iota** rapidly evolved from a category 4 to a category 5 on the Saffir Simpson scale. Hurricane Iota made landfall on Nicaraguan soil in the community of Halouver (350 families with 1,750 people, mostly indigenous of Miskito origin) at 10:40 pm, with winds of 260 kph 45 kilometers south of Puerto Cabezas. During the course of that same night, it was downgraded to a category 2 and impacted the municipality of Siuna with category 1 with winds of 130 kilometers per hour, moving west to 15 kilometers per hour.

As a result of the impact of Hurricane Iota, the Northern Caribbean Region was left isolated, without telephone, internet connection, electricity and drinking water supply service. The city of Puerto Cabezas shows severe devastation, homes were totally destroyed, the seaport was destroyed, the temporary hospital that was functioning had to be evacuated to the regional government headquarters because the building was beginning to give way to strong winds and the Bello Amanecer regional hospital suffered even more severe damage.

Iota, degraded to a tropical storm, then impacted the Nicaraguan Pacific Region, leaving destruction of bridges, loss of homes due to landslides and winds, falling trees, and flooding in the departments of Rivas, Managua, Carazo, Jinotega, Nueva Segovia, Wiwili.

¹ [The World Bank](#), Nicaragua overview

² Puerto Cabezas is a municipality and a city in the Republic of Nicaragua, capital of the Autonomous Region of the Northern Caribbean Coast. Bilwi is the Misquito name for Puerto Cabezas. Bilwi is usually referred to as the municipal capital of Puerto Cabezas municipality.

As of December 4, there are still 663 people evacuated and sheltered in the Northern Caribbean Region. Up to 376 wells have been disinfected in communities of Prinzapolka, Potosi, Tola and Puerto Cabezas municipalities, and 476 cases of Malaria were registered, which represents a decrease of 24% from the previous week.

Summary of damage

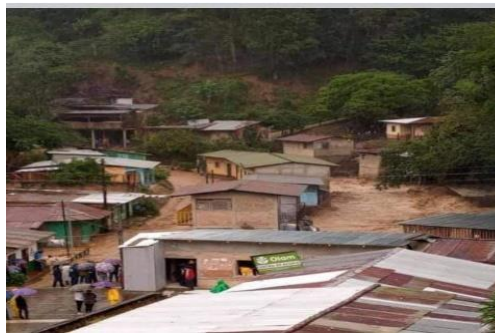
An updated report from the government following Iota was presented on 24 November with the following information:

SINAPRED figures after Eta and Iota³:

- A total of 56 municipalities were affected, with an estimate of **3 million people exposed**⁴ to both events.
- **Housing sector:** this is the sector with the most relevant impact, since most of the affected population has lost their home or have had significant damage, which amounts to USD 126,171,000. There are 5,818 houses completely damaged and 39,600 with partial damages.
- **Education sector:** there is a very strong impact on the number of damaged classrooms and schools, with preliminary data amounting to USD 41,032,000. Damages are reported in 261 schools, 2 technology centers and 2 university campuses
- **Health sector:** there is severe damage to the public health network, representing USD 12,629,000 including the impact on the Bilwi hospital. A total of 16 SILAIS (Local Integrated Health Care Systems) were affected in 13 departments and in the two regions of the Northern and Southern Caribbean. Between regional, departmental, and primary hospitals, 15 buildings were affected. 19 health centers, 45 health posts, 5 maternity waiting homes and 11 logistical support structures such as warehouses for medical supplies and others, were also affected. In summary, a total of 95 structures that provide health services at national level were affected.
- **Livelihoods / Productive sector:** a full assessment on the agricultural losses is not ready yet. Losses on the fishing sector represent USD 19,649,000.
- **Private sector:** the mining sector has been affected by USD 1,882,000.
- **Infrastructure:** 98 per cent of damages are focused on the road network and land transportation which amounts to USD 350,000,000. The total damages in infrastructure amounts to USD 361,911,000.
- **Water transport:** USD 2,000,000 in losses and damages.
- In **Water and Sanitation**, the damages are quantified in USD 6,604,000.
- **Energy sector:** USD 6,500,000.
- **Telecommunications:** USD 1,887,000.
- **Environmental damages:** USD 141,000,000.

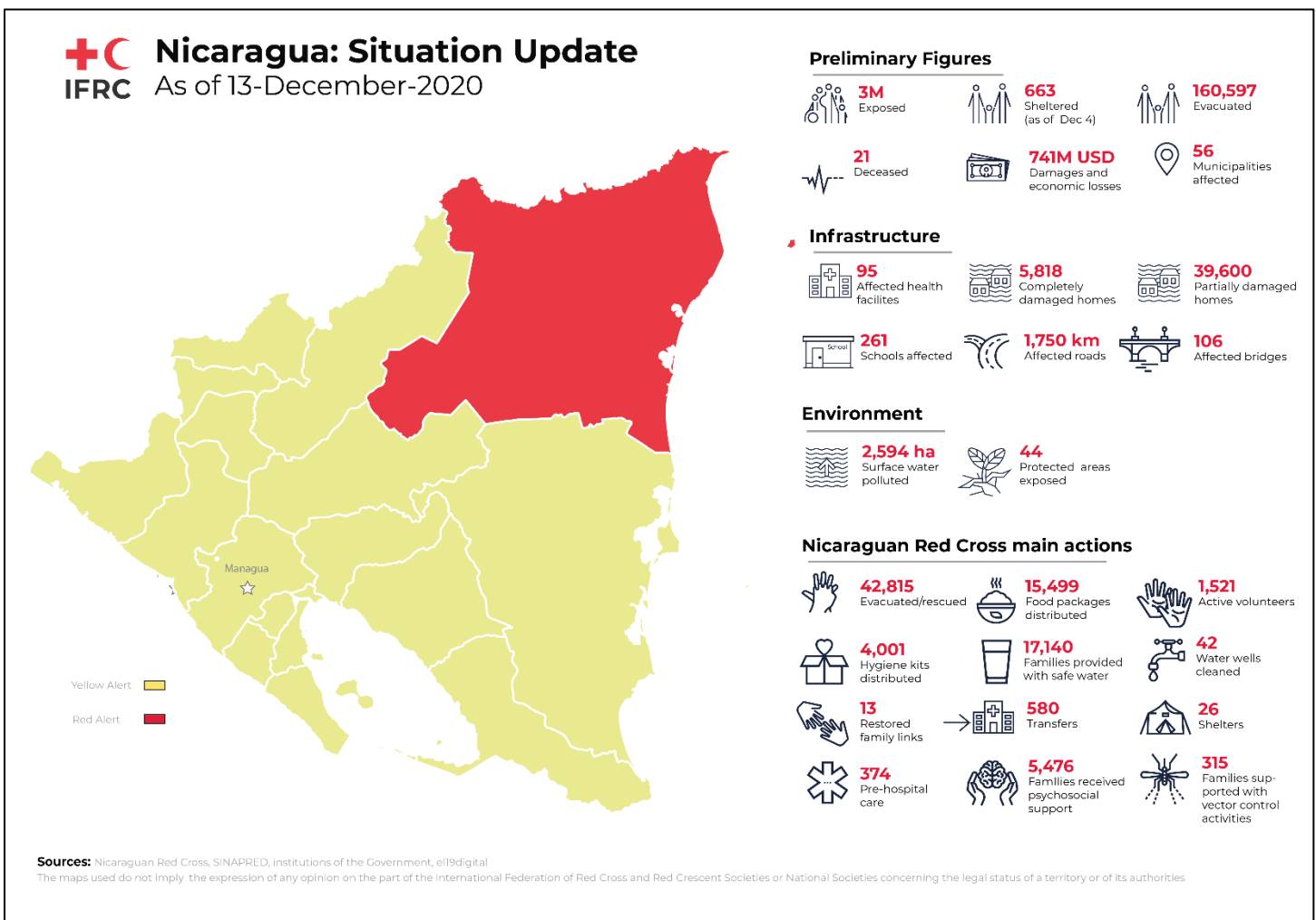
³ [El 19 Digital](#), November 25

⁴ OCHA Central America, [Humanitarian Snapshot for TS Hurricane Eta and Iota of December 4th](#), it is mentioned 1,8 MM people affected in Nicaragua.



Damages caused by Eta and Iota in the Northern Caribbean Region
Source: NRC

Situation update and NRC main actions post Eta and Iota



Summary of the current response

Overview of Host National Society Response Action

The **Nicaraguan Red Cross (NRC)** is an 86-year-old National Society (NS) that works as an auxiliary to the Government as established in its legal framework; it is comprised of 32 branches of which 17 are municipal in the 15 departments that constitute the nation. As of today, the NS has 1,520 volunteers assigned in all the national territory to respond to the ongoing emergency.

The NRC has established strategic guidelines for actions targeting the most vulnerable people aiming to strengthen their resilience through the development of services, programs focused on reducing vulnerability, risk reduction and disaster relief.

In the last few years, the NRC has responded to different disasters that have endangered the lives of the population, such as Hurricane Felix in 2007 in the Northern Caribbean Region and one of the most recent in 2017, Storm Nate, which caused severe damage in various areas of the country. The NRC mobilized DREF funds to provide assistance to the affected population, and Nate's experience has strengthened the National Society and has brought experience in managing and dealing with this type of disaster.

NRC has carried out a significant amount of Damage and Needs Assessment (DANA) during the first weeks of the operation, in addition, the staff and volunteers played a role contributing to official information that has been produced so far. Beyond that, NRC has identified most of the staff that will be part of the response team to implement the proposed intervention. Most of the identified staff have been trained in different areas of expertise and some of them have been deployed abroad to support other emergencies in the Americas.

CURRENT RESPONSE ACTIONS⁵

Deployments of specialized teams:

- Deployment of a support team to the impact zone for the local emergency management (1 general Regional Intervention Team-trained (RIT-trained), 1 National Intervention Team (NIT) in water and sanitation and 1 logistician).
- Specialized Response Team deployed to Prinzapolka (18 resources: RIT-trained, ENI, Water, Sanitation and Hygiene (WASH), Psychological Support Services (PSS), Restoring Family Links (RFL), Community Engagement and Accountability (CEA).
- Response Team located in Puerto Cabezas at the time of the impact of Hurricane IOTA, in support of the local affiliate, provided response to the population in the disaster (they supported the evacuation and assisted people who were injured while reinforcing their homes).
- Damage and Needs Assessment, DANA (in Bluefields, Bonanzas, Puerto Cabeza, Prinzapolka, Jinotega, San Rafael del Sur, Rivas).

Evacuations and rescue activities:

- Evacuations in Affected Areas (Bluefields, Puerto Cabeza, Prinzapolka, Bonanza, Rivas, Masachapa, Jinotega, Matagalpa, Wiwili, Rio Blanco, Matagalpa, Leon).
- Staff from the 32 branches activated monitored critical points, supported the evacuation and rescued families who were isolated by the flooding of the rivers.
-



*Evacuations in the municipality of Sebaco in collaboration with COMUPRED
Source: NRC, 17 November*

Health related activities:

⁵ For full list of NRC actions, please refer to the graph.

- Psychosocial support to the impacted population (Rivas, Puerto Cabeza).
- Pre-hospital care
- Ambulance transfers
- Delivery of First Aid kits, PPE, Kitchen and Personal Hygiene Kits.

WASH related activities:



*Families in Prinzapolka receive safe drinking water
Source: NRC, 20 November*

- Repair Drinking Water Pumps.
- Reactivation of Drinking Water in the Puerto Cabezas Branch with WASH equipment
- Transfer and start-up of the water treatment plant in Alamikamba, Prinzapolka.
- Distribution of drinking water to communities in Prinzapolka.
- Preparation of water treatment plants that will be transferred to the Municipality of Waspan.

Food related activities:

- Withdrawal, preparation, transfer and delivery of Food and Personal Hygiene Kits for 1,700 families (8,500 people in Alamikamba, Prinzapolka).
- Delivery of 1200 food kits and 1200 liters of water to 1200 families in 7 communities in the department of Rivas
- Promotion of Food Collection, non-perishable food and Hygiene Kits, and hire distribution trucks.
- Food delivery to the departments of Rivas and Camoapa.
- Preparation and delivery of 4862 food and hygiene kits delivered to communities in the municipality of Waspan



*Families in the community of Barraza, municipality of Potosi in Rivas, received humanitarian aid
Source: NRC, 21 November*

Coordination activities:

- Coordination meeting with SINAPRED, Ministry of Foreign Affairs, Municipalities for the coordination of the response and selection of beneficiaries.
- Coordination with private companies for the distribution of humanitarian aid: Nestlé, BANPRO, BANCO DE ALIMENTOS, American Nicaraguan Foundation (ANF).
- Coordination with Donor Partners and formulation of project proposals: Swiss Cooperation for Central America (COSUDE), World Vision) Movement Partners: Spanish Red Cross and Italian Red Cross.
- Receiving humanitarian aid from Corporate Partners: BANPRO (Grupo Promerica) and Nestlé.
- Coordination meetings with representatives of the Regional Government in Puerto Cabezas and visit to the hurricane impact area, assessing damages and needs.
- NRC authorities mobilized to publicize the damage generated by IOTA and to mobilize resources to provide a faster response to the affected population.

Overview of Red Cross Red Crescent Movement Actions in country

The International Federation of the Red Cross and Red Crescent is present in the country, through the COVID-19 Regional Operations Manager (ROM), who coordinates and supports the different IFRC actions in country. This ROM also supported the National Society during the emergency response, called for the activation of DREF funds, emergency appeal and other types of support that the National Society required in response to contingencies. The ROM is also responsible for COVID-19 projects at the country and regional level.

The IFRC office in Panama has a pool of specialized team members that manage emergency funds and projects and provides support according to the programs' sectoral needs: Water and Sanitation, Health, logistics, disaster risk reduction, shelter among others. This technical team assists the Nicaraguan Red Cross to identify priority needs according to the status of the damage assessment and needs analysis for the implementation of response and recovery actions to the population.

In Nicaragua, the Italian Red Cross (IRC), the Spanish Red Cross (SRC) and the International Committee of the Red Cross (ICRC) are operating bilaterally. For the response to the emergency, both PNSs have been accompanying Nicaraguan Red Cross in the evaluation of damages and assessing the immediate needs of response to the population, for this purpose ICRC has allocated emergency funds to cover the operational costs represented by the displacement to the affected areas to provide humanitarian aid. The SRC, taking into account the priorities identified, is managing funds with its traditional partners such as ECHO (Humanitarian Aid Office of the European Commission) and its own funds. The ICRC continues to strengthen the themes of Safer Access in emergency operations and Restoration of Family Contacts actions developed in the framework of response and recovery.

The NRC as the lead responder in its territory, through its National Response Plan, is organized according to the following sectors of work: Operations Committee, Health Commission, Monitoring and Follow-up Commission and Logistics Commission. The NRC has 32 branches nationally, all of which occupy a chair in the COMUPRED of each Department, as well as they belong to nine commissions that are part of the National CODE.

The NRC is implementing its National Response Plan, including the strategic levels and decision makers coordination with the different movement partners for the actions that will be developed to meet the needs of affected people. For this, a global action plan is developed that contains the different lines of action and aims to respond to 12,000 families and 60,000 people with a requirement of USD 14,000,000. As progress is made with the damage assessment and the needs of the most vulnerable populations are prioritized, this Emergency Plan of Action (EPoA), which aims to reach 8,500 families in Waspan, Puerto Cabezas y Prinzapolka, Rivas, Jinotega, Bluefields and Managua and has a funding requirement of CHF 5,013,270 is being further detailed and will be coordinated under the Federation Wide Approach. This allows for the areas of intervention to be defined according to the prioritized needs

The action plan is guided by the population's needs and it offers the response and support that can be offered by the different partners of the RC Movement. There is a coordination mechanism which are the daily meetings with Movement partners to visualize needs and priorities. From that level, funding management are coordinated, firstly DREF funds of an amount of 440,000 CHF were made available, and now through the current Emergency Appeal, and other bilateral contributions. The NRC provides information on its response actions and local coordination with partners and donors.

In addition to membership coordination via surge deployments, the IFRC is engaged in active membership coordination in Nicaragua. It is encouraging a coordinated and harmonized response through shared leadership initiatives, in which one or more National Societies present in the country co-lead with the local National Society in a technical response area, according to capacity and expertise. There are other membership coordination mechanisms such as Country Support Teams, through which the local National Society can, if needed, call on other National Societies in the country for assistance in areas such as development of response plans, data collection and reporting. The IFRC is also collecting Federation-wide data for monitoring and reporting, outlined in more detail under the PMER section.

Overview of the actions of other actors in country

As soon as the alerts for both events were issued, the Nicaraguan Red Cross started coordinating with SINAPRED for a response based on needs and to ensure good planning. The SINAPRED coordinated the zones of intervention with the NRC priority areas of focus, based on the locations most affected and on population's needs. Meanwhile, the Red Cross provided a priority response to the population that experienced the compounded effects of Hurricane Iota in Waspan, Prinzapolka, Puerto Cabezas, Rivas and Jinotega. Some more details of other actors involved in the current response are available below:

Private companies receive or collect aid in country. Some deliver the collected aid by their own means directly to communities and others deliver it to the NRC's national collection center. The companies Nestlé, Grupo Promerica through

BANPRO, ANF, Food Bank, Walmart, have established alliances with NRC and have made donations of food and hygiene kits which have been distributed by NRC in the affected areas.

Some NGOs such as Word Vision, Governmental agencies such as COSUDE (Swiss Development Cooperation), AECID (Spanish Development Cooperation), USAID, have also carried out meetings with the Nicaraguan Red Cross to support the response and recovery of the affected people.

United Nations organizations coordinate with the government to implement their response actions. The World Food Program, for example, provides food aid to SINAPRED and UNICEF coordinates with the Ministry of Education to address the needs of children in schools, as well as infrastructure needs.

In order to continue meeting the needs of those most affected by Hurricane Eta and Iota, these coordination mechanisms with the private sector, Government and other NGO's will be prioritized with corporate and international donors to channel aid, which the NRC can deliver to the affected population.

Needs analysis, targeting, scenario planning and risk assessment

Needs analysis

Nicaragua's Caribbean occupies 46% of the national territory, is one of the least developed areas, and has the highest poverty gaps represented by 30%. Additional factors to these vulnerabilities are limited infrastructure such as roads and water and sanitation systems, education and health conditions. Another feature of the region is its geographical position because it is in the hurricane corridor. These conditions of vulnerability are aggravated by the presence of powerful hurricanes such as Eta and Iota that have devastated the cities of Puerto Cabezas (Bilwi) and Prinzapolka; destroyed the communities of Halouver and Wawa Bar, and destroyed homes due to landslides and swollen rivers in the Central Pacific zone. They have also left communities flooded, making it impossible for families to return to their homes. In the Pacific zone, 21 lives were lost, while in the impact zone there were no lives lost.

Preliminary reports from SINAPRED on November 9 and 24 regarding damages caused by Eta and Iota respectively, highlight that three million people were exposed to both hurricanes in 56 municipalities, mainly in the Northern Caribbean Coast Autonomous Region, Triángulo Minero, Nueva Segovia, Rivas, Carazo and Jinotega. More than 160,000 people were evacuated; 47,297 were sheltered in 325 collective centers during the ETA and 50,737 in 1197 shelters and 300 solidarity houses (houses of family members, friends or acquaintances) during IOTA. .

Electricity and drinking water services were interrupted due to the cutting of both services by the generating companies, in addition to damage to the network, due to damage to power poles and cables and Añacal's piping, as well as the contamination of community wells. Currently, services are recovering, albeit slowly. Water is the least restored service, due to the little coverage ENACAL has in the Zone. The communities are supplied by wells or surface water sources that are contaminated. In rural communities, communication is difficult because the telecommunications systems do not have coverage, limiting communication to the communities, most of the time they rely on radio communication.

The storms have also caused extensive damage to crops and farmland, livestock and fishing assets, and infrastructure, which will result in the reduction of critical food and income sources. Also, the damages in roads and bridges have left the food supply low and markets functioning below normal levels. The damages in infrastructure are also disrupting trade flows, which will result in higher prices and subsequent reduced food access for many poorer households. Given that the hurricanes hit the region at a time of year when poor and extremely poor households typically earn most of their annual income, and these income earning opportunities have been undermined, atypically high needs are expected to persist through the 2021 lean season. Livestock losses are reported in the Northern Autonomous Atlantic Region, Matagalpa and Chontales departments, where it comprises an important source of income for some extremely poor and poor households.

In addition to the likely increase in acute food insecurity in hurricane-affected areas, there is heightened concern for negative health outcomes due to damaged water infrastructure and sewage systems. Furthermore, there is the potential for an increase in COVID-19 cases due to overcrowding in shelters and lack of access to clean water and proper sanitary measures.

As for the operational needs of the NS, the NRC equipment and vehicles will require complete service and maintenance. For example, the water treatment systems will require maintenance including parts and materials that are required for water quality tests among others.

Considering the impacts reported by SINAPRED, the following **priorities** are identified by the authorities:

- Attention to families in collective centers and in situations of food insecurity, families who have lost their homes and livelihoods and others who have not been able to return to their communities.

- Purchase of housing construction materials, roof repair and temporary housing solutions.
- School construction and repair.
- Construction or rehabilitation of health centers: official figures state the total damages in the health sector amount USD 12.6 mill, the damages reported are: 2 regional hospitals (including the Regional Hospital at Puerto Cabezas), 3 departmental hospitals, 10 primary hospitals, 19 health centers, 45 health posts and 5 maternity waiting home.
- Infrastructure: road network damage, bridge repair, markets, land transport, reconstruction of Puerto Cabezas pier.
- Rehabilitation of water and sanitation and energy networks.
- Prevention of water- and vector- borne diseases given the extensive damages to water and sanitation facilities, contamination of wells and superficial water sources in which the population is located.
- Given that from January 3 to December 14 2020, there have been 4,709 confirmed cases of COVID-19 with 162 deaths⁶, is important to take action to reduce and/or prevent the spread of COVID-19 in collective centers and during transfers of sheltered people to safer areas. Communities do not follow protective measures. Crowded spaces such as evacuation centers and shelters can increase the risk for transmission of Covid-19, because physical distancing is more difficult.
- The level of exposure that the population had to the event (hurricane winds of 240 kmph of slow movement that put people's lives in danger), increases the probability of suffering post-traumatic stress, anxiety, feelings of loss and mourning, so the importance of attending to the mental health and psychosocial support of the population is fundamental to emotional recovery. Due to operational risks in the impact zone, it is necessary to determine a safety plan taking into account all the elements for safer access for NRC personnel moving to the mission such as security for aid and the protection to be provided to the benefiting population.

Protection, Gender and Inclusion

- During emergencies, women, girls, vulnerable groups such as people with disabilities, and children are most at risk. Gender-based violence can be exacerbated during emergencies by the lack of law and order, the lack or limitation of support services, and the temporary disappearance of social networks. Crowded spaces, such as evacuation centers and shelters, can increase protection risks, such as sexual abuse, harassment, neglect of specific needs (e.g., for the elderly and/or people with disabilities), and sexual exploitation and abuse. Therefore, meeting minimum standards of protection, gender and inclusion are key to these settlements. One way of doing this, is ensuring the presence of security personnel who can prevent women and children from becoming victims of violence and to adapt these physical spaces to their needs. With regard to gender-based violence, it is necessary to establish preventive measures in the evacuation centers and to continue applying these measures throughout the intervention. Disaster Risk Reduction Activities will be needed to build communities resilience to better face any other event, as well as protect the goods and livelihoods of communities.
- According to ACAPS Situational report, in terms of protection risks the rates of domestic violence, gender-based violence (GBV), underage pregnancies, and femicides are high in Puerto Cabezas compared to other regions in Nicaragua; risks to girls and women are likely to increase during this emergency, particularly in overcrowded, mixed shelters and isolated communities.
- The population in Prinzapolka and Puerto Cabezas along with the other communities affected, are composed of ethnic indigenous populations (Miskita and Mayagna) and non- indigenous populations. The population of Puerto Cabezas is very heterogeneous, due to its multi-ethnic character, where 72.3% belongs to the Miskito ethnic group, 21.7% to the mestizo ethnic group, 5.7% to the Creole ethnic group and 0.3% to the Sumu ethnic group; there is a total of 46 indigenous communities in the municipality.
- According to UNICEF's latest situational report (December 9), 720,000 children have been affected and from the 59,664 persons sheltered 40% are children.
- More than 380 educational centers, to date, have been reported as affected by the emergency and a total of 2085 educational centers have suspended their classes (out of 9105 centers nationwide). Classes have been suspended because they are located near rivers, streams or affected by falling trees in the vicinity located in the areas of Triangulo Minero, Costa Caribe Norte, Costa Caribe Sur, rural communities of Jinotega, Morrito, Rio San Juan, San Rafael del Sur in Managua. In addition, 22 educational centers are functioning as shelters for 4900 people from Puerto Cabezas Rosita, Bonanza, Siuna, Desembocadura del Rio Grande and Waspam.

⁶ [WHO](#)

Health and Psychosocial Support (PSS) Care

Eta destroyed or damaged 16 health facilities, the so called SILAIS (Local Integrated Health Care Systems) and 81 other health posts, among them one regional hospital, 3 departmental hospitals, 7 primary health hospitals, 15 Health Centres, 42 health posts and 5 maternity houses. The estimated damages in the health sector go beyond 12.6 Million US-Dollar according to the Nicaraguan Government.⁷

More than 50.000 people had to move into 250 government shelters, according to Nicaraguan Vice-President Rosario Murillo. Living in crowded conditions, increases the risk for transmission of diseases and particularly for COVID-19 as physical distancing is very difficult. In the context of the COVID-19 pandemic, basic epidemic prevention and increased control measures are necessary including the distribution of personal protective equipment such as masks. Handwashing facilities should be provided, as well as hand sanitizers. Many shelters are not equipped with sufficient resources to house displaced populations for a longer period of time. This is why they should be supported with hygiene kits, medicines and safe drinking water to prevent the outbreak of other infectious diseases which are transmitted easier under difficult sanitary circumstances such as cholera or other gastrointestinal infections.⁸

Coordination mechanisms and referral pathways will be built to provide the adequate support to people in higher risk of suffering the impact of the natural disaster. In the context of the COVID-19 pandemic, basic epidemic prevention and increased control measures are necessary including the distribution of PPE.

Malaria is endemic in the Moskitia area along the Atlantic coast in the northwestern part of the country. Between January and August 2020 Nicaraguan Health Authorities have reported a total of 12.640 cases of Malaria in the region of Bilwi alone. This is already an increase of 161% in comparison to 2019 according to the MoH.⁹ Due to the heavy rains and floods cases are likely to increase further if no preventive and responsive measures are being conducted. Before Eta and Iota, Nicaragua had lowered the number of confirmed and suspected cases of Dengue and Chikungunya with a percentage change of around 40%; by epidemiological week 21. With a new prone environment for vector proliferation, it is most likely that an opposite situation will develop in the country.

In addition to the likely increase in acute food insecurity in hurricane-affected areas, there is heightened concern for negative health outcomes due to damaged water infrastructure and sewage systems. Furthermore, there is the potential for an increase in COVID-19 cases due to overcrowding in shelters and lack of access to clean water and proper sanitary measures.

The NS will ensure that all building codes are considered as well as the climatic conditions of the region. A risk analysis of the area will be done by the local construction staff such including architects, engineers, and construction coordinator.

Physical, mental/emotional health is greatly affected after being exposed to two catastrophic events that put lives at risk and disrupted the daily lives of the affected population. In Nicaragua more than 6.900 houses were destroyed and in nearly all parts of the country agriculture, livestock and rural livelihoods were heavily damaged. Emotional health is required to address grieving processes or loss of loved ones, housing and livelihood. It is also required to address people with post-traumatic stress or anxiety crises experienced after the events. In addition to the impact on communities, there is a disruption of the normal service provision and damages to existing infrastructures dedicated to providing mental health care to people with pre-existing conditions.

The NS offers regular services in the provision of control of chronic diseases (blood pressure measurement or glucose control), which will also be considered as part of the provision of services through this operation.

Shelter

In response to Hurricane Eta and Iota, preemptive evacuations were carried out for the high impact of rain, winds, and storm surge on the mainland on the North Caribbean Coast, and flooding and landslides in the Pacific region. Families were relocated to collective centers, which created the need to ensure that evacuees have basic items to meet their immediate needs and that measures are in place to implement physical distance safe measure against COVID-19.

Affected persons, who are in collective centers as well as those who have taken refuge in their relatives' homes, will need assistance to cover or repair affected areas of their homes. People will also need a supply of tarpaulins, shelter kits, blankets, kitchen appliances and cots to help meet some of their needs.

⁷ <https://cnnspanol.cnn.com/2020/11/24/gobierno-de-nicaragua-presenta-informe-preliminar-de-danos-provocados-por-los-huracanes-iota-y-eta/>

⁸ <https://www.usaid.gov/crisis/hurricanes-iota-eta/fy21/fs1>

⁹ <http://www.minsa.gob.ni/index.php/repository/Descargas-MINSA/Direcci%C3%B3n-General-Vigilancia-de-la-Salud-P%C3%ABlica/Boletines/Boletines-2020/Bolet%C3%ADn-Epidemiol%C3%B3gico-Semana-No.-21/>

Water, Sanitation and Hygiene Promotion

With the passage of the two hurricanes, the company of Aqueducts and Sewers reports that some 98,000 families (close to 500,000 people) in 30 cities of the country were left without access to drinking water, due to the damage caused to the electrical energy system and for damages to the drinking water network, contamination of wells and the contamination of surface waters caused by floods.

Additionally, the Bilwi power plant is powered by fuel, which is not available in the region since the Port has not yet been rehabilitated, making it difficult for the governing entity ENACAL to quickly re-establish service.

In the municipality of Prinzapolka there is no network of drinking water supply, the population is supplied from natural sources (rivers, pipes, wells). The water that is usually destined for human consumption comes from the Prinzapolka river. In some communities there are wells, but in most cases the water is not suitable for human consumption, due to the level of contamination from the mines that come from the Bambana river which is an affluent of the Prinzapolka River.

It is necessary to evaluate the quality of water for human consumption and promote access to it and preventive health actions (Sanitation), for populations that return to their homes and those that have to stay in collective centers because they have lost their homes. This will prevent outbreaks and epidemics caused by post-flood conditions.

At the same time, sanitation actions will be promoted by promoting hygiene in emergencies, the construction and / or rehabilitation of latrines, in the communities that are required. It is important to inform the population about solid waste management and garbage treatment to create healthy environments in the affected population.

One of the institutional needs is to equip the water treatment plants. It is also necessary to strengthen the Nicaraguan Red Cross in enabling the stock of water treatment plants and can provide a rapid response to the existing water needs, on the other hand, renew the plants that have been damaged to the continuity of this humanitarian service in future processes.

Livelihoods

The population of the communities of the North Caribbean are mostly engaged in artisanal fisheries and agriculture, with the passage of the hurricanes livelihoods have been affected, with floods of the growing areas, as well as with the entry of the salt water into agricultural land, as well as destruction of pangas, cayucos fishing nets, and the destruction of crops, especially in the coastal communities of both Puerto Cabezas and Prinzapolka, and the communities of the Coconut river downstream. The storms also caused extensive damage to crop and farmland, livestock and fishing assets, and infrastructure, which will result in the reduction of critical food and income sources in both the short and medium term. Furthermore, many roads and bridges were either destroyed or temporarily made inaccessible, altering the food commodity supply flow and driving market functioning to below normal levels. Although local governments and humanitarian actors are responding with assistance, the need is expected to surpass the current capacity to respond. A scale up on food assistance is urgently required to meet the food needs. Given that the hurricanes hit the Nicaragua at a time of year when poor and very poor households typically earn most of their annual income, and these income earning opportunities have been undermined, atypically high needs are expected to persist through the 2021 lean season.

In addition, according to the regional ministries of agriculture, much of the postrera bean production, which is highly susceptible to moisture damage, has been lost. The postrera harvest typically provides bean stocks for 3 to 4 months for poor households and offers some income from crop sales and local harvesting labor, particularly in the areas of northern and eastern Guatemala, northeastern Nicaragua. The Northern Autonomous Atlantic Region, Matagalpa and Chontales departments in Nicaragua, where livestock comprise an important source of income for some very poor and poor households. Along the Caribbean coasts of the three countries, many households are also expected to lose access to fishing, with the destruction of fishing equipment, such as nets and boats; fish sales and fish products are a significant source of income and food for very poor households in these areas.

Below-average production and damaged infrastructure, such as collapsed roads and bridges, are disrupting trade flows, which will result in higher prices and subsequent reduced food access for many poorer households. Alongside speculation and hoarding of goods, higher transportation costs are expected to lead to sustained price increase. In addition to the likely increase in acute food insecurity in hurricane-affected areas, there is heightened concern for negative health outcomes due to damaged water infrastructure and sewage systems

Taking into account these needs it is proposed the replacement of tools for fishing, delivery of seeds and fruit plants to rehabilitate crops, promotion of other sources of income such as the rehabilitation of small businesses through cash transfers, which will be accompanied by an appropriate investment management training process.

It is proposed to support families to access food for a period of three to six months until families, selected for their vulnerability status, can achieve stability. The modality (whether food kits or CVA) and the length of the support will be adjusted according to the level of vulnerability of each beneficiary and resources available.

Disaster Risk Reduction

According to the Global Climate Risk Index (Germanwatch, 2019), Nicaragua in recent years has been on the list of the 10 countries with the highest level of exposure and vulnerability to extreme weather events between the periods 1998-2017, currently ranking sixth. Taking into account the extreme events that have occurred both in frequency and intensity to which Nicaragua has been exposed, it is necessary to continue with actions to prepare for the response for communities, actions to adapt to climate change that allow better conditions to deal with emergencies, as well as actions to inform and raise awareness of risks to generate greater perception of risk and promote changes in behaviors.

Migration - Restoring Family Links (RFL)

Taking into account that one of the potential risks to disasters of great magnitudes is the loss of contact with families, it is proposed to carry out an initial diagnosis to assess existing needs, identify the hostel centers that deserve greater attention and prioritization of cases and subsequently proposes to implement actions such as establishing calls to family members through Cell Phones that were located in the hostel centers , in distant communities this will be done through HF radios or satellite phones, this will allow the family to reduce stress by knowing that their family member is ok and allow them to resume their activities and start the recovery phase.

Telecommunications:

Communication in the North Caribbean region, at the institutional level in recent years has been limited by the lack of a Repeater Self-supported Antenna that allows to maintain radio signal with the region and interconnected between branches in the Zone. In the face of climate events such as tropical storms, hurricanes that are more frequent on the Caribbean Coast, because of their geographical position on the hurricane route, it is necessary that the Nicaraguan Red Cross as a response entity and part of the National System of Prevention, Mitigation and Disaster Care have this equipment functioning and thus provide a timelier service to the population affected by these phenomena.

Training volunteers and staff

Nicaraguan Red Cross to improve its response needs to continue to strengthen itself in the management of knowledge of human talent, in specialized and important issues for emergencies, especially taking into account that in recent years it has had to respond to different crises in which both volunteers and staff members are exposed (Epidemiological Alerts, Zika and Dengue have had to be prepared, Civil Riots 2018, COVID-19 Pandemic) and now disaster response caused by two major hurricanes IOTA and ETA. The strengthening will be directed to Knowledge Management and Operational Capacity Building through various workshops for staff and volunteers in health in emergencies, water and sanitation, use and management of water pumps, emergency shelter assistance, restoring family contacts, strengthening psychosocial support and damage assessment and needs analysis.

Selection Criteria and Target Population

As part of the National Society Response Plan, NRC is targeting **12,000 households (estimate 60,000 people)** in the most affected areas: Waspan, Puerto Cabezas y Prinzapolka, Rivas, Jinotega, Bluefields and Managua. **Targeting** will be done in coordination with the SINAPRED and COMUPRED and based on agreed upon criteria as follows: Families that have completely lost their homes and those who are still in collective centers and who require multi-sectoral assistance for several months while they are supported in their recovery, and those whose homes have suffered partial damages and who have different immediate and recovery needs. Identification of targeting and selection criteria will be done through a community-based approach, and vulnerable groups, single mothers, people with disabilities, and older adults will be considered.

Planning according to scenarios

Scenarios

- Rains persist, causing flooding
- Overcrowding in collective centres prevails or increases. People stay in informal settlements.
- Proliferation of vectors and related diseases. Increased COVID-19 outbreaks.
- The fundraising needed to develop the Plan of Action is not sufficient.
- The deterioration of schools used as collective centers is exacerbated.
- The NS cannot meet the current needs of the population, despite its capacity.
- Due the Socio political context around the Presidential election the tensions will go up

- Rains decrease, floods and minor landslides.
- People gradually return to their homes.
- Disease outbreaks in isolated areas.
- Capacity of the health structure is maintained
- Funds are generated to partially develop the Action Plan.
- The basic needs of most of the population are met.
- Restart school activity in some schools.
- The NS can partially address the current needs of the population, at its scale to capacities.
- There will be any minor social and political issues out of the operational area

- Rains stop.
- People receive medical care and see their basic needs met, returning much of the population to their homes.
- Disease infections decrease.
- The local economy is restored and unemployment declines.

Humanitarian Consequence

- Increases need for rescue and first aid.
- Increased levels of food insecurity.
- Water and sanitation crisis.
- Collapse of the health systems.
- Increased levels of poverty and extreme poverty.
- School dropout, increased rates of illiteracy.
- People again suffer from the on-slating of extreme weather events (drought cycles followed by hurricanes).
- Reputational risk to the Movement.
- Riots or conflicts between civil groups.
- Loss of human life
- Arrested or imprisoned

- Malnutrition tables are generated in some sectors of the population.
- Sectors of the population with unmet basic needs.
- Sporadic disease outbreaks.
- Wear and tear on support and health personnel.
- Medical services cannot be completely reestablished.
- Schools, housing and other basic infrastructure require immediate rehabilitation to restore services.
- Unemployment and loss of livelihoods, which push negative adaptation mechanisms.
- Need to accompany communities to build resilience and prepare for new multi-threat events.
- Accompaniment in development of adaptation measures to climate change.

Sporadic demonstrations around the presidential elections

- Temporary needs for care and medical services.
- Basic population needs require temporary support.
- Accompaniment for livelihood recovery.
- Accompaniment to develop risk management and community preparedness plans.

Potential Response

- Increase the readiness and response capacity of the NS.
- Address population basic needs (food, water and sanitation, health, shelter).
- Livelihood recovery activities.
- Support the rehabilitation of basic infrastructures,
- support community in disaster risk reduction plans related to safe shelter and settlement, through PASSA.
- A unique National Response Plan is used by the NS and the Movement partners to maximize the efficiency of the resources gathered.
- Implementation of the contingent plan in the face of civil unrest and 2021 elections

- Increase the readiness and response capacity of the NS.
- The basic needs of a large part of the population are met, sanitation and hygiene promotion activities are carried out. Health and health care services are provided in the affected areas.
- The livelihoods of people in the most critical situation are recovered, strengthened.
- Some basic health and education infrastructures are rehabilitated, multi-threat disaster community preparedness plans are developed
- A unique National Response Plan is used by the NS and the Movement partners to maximize the efficiency of the resources gathered.
- Implementation of some specific measures of the contingent plan in the face of civil unrest and 2021 elections

- Increase the readiness and response capacity of the NS.
- Basic needs are temporarily met, health and health care services are provided and restored for the long run,

People's livelihoods are recovered and strengthened, health and

- International humanitarian funds are obtained to support the operation beyond the emergency phase to recovery.
- Funds are enabled for resilience development and adaptation to the CC.
- There wont be any social political issues around the general elections
- Accompaniment in development of adaptation measures to climate change.
- People require assistance to get their basic needs, but only for short spaces of time.
- No demonstrations either civil unrest related issues
- education infrastructures are rehabilitated.
- Community preparedness plans are developed for multi-threat disasters in all communities, plans for climate change awareness and adaptation are developed and implemented for communities.
- A unique National Response Plan is used by the NS and the Movement partners to maximize the efficiency of the resources gathered for the 24 months of the operation.
- No need to implement any contingency plan

There is a risk analysis that was produced within the COVID-19 EA context during the month of July and August 2020. There will be a review and adjustment to the COVID –19 Risk Analysis within the Eta/Iota context. There is full time risk management focal point that will lead this process to ensure proper analysis and mitigation measures

Operation Risk Assessment

1. Hurricane season

The hurricane season this year has been especially active and the northern part of Nicaragua is vulnerable to high storm activity. Technically, the hurricane season 2020 have ended on November 30, however, storms may continue beyond this date. From the NRC operational security measures are taken so as not to endanger the lives of staff or communities, however, the NRC facilities, equipment, and staff and volunteers were directly impacted by the events and suffered damages of different degrees. The staff and volunteers are showing signs of tiredness after weeks of intense activity, long routes and emotional challenges. The NRC is its National Response Plan is prioritizing the recovery of the facilities and equipment lost as soon as possible to be back to its capacities to respond nationally.

The area in which the operation will be carried out is one of the most vulnerable in the country, it is in the jungle and access is limited, thereby rapid response operations are practically impossible. The North Caribbean Coast of Nicaragua is one of the most vulnerable in the country and emergency operations are complex and costly. Access is only possible by air on small aircrafts that fly only three times a week on a one trip-per day schedule. Access to many of the affected communities has to be via Waterways by means of local pangas, which could limit the operation and complicates quick access to the area. When road access is possible, it is very limited and often impeded by floods. Additionally, the area has known risks of assaults on humanitarian aid trucks, obstructed access to roads by flooding rivers and poor road conditions.

2. COVID-19 Pandemic

The situation of COVID -19 is also an aggravating factor for the operation given infection risks for the technical team and targeted population. Malaria is prevalent in the region and there is a risk of Dengue outbreaks. As NRC, the Security Plan is being implemented for safer access and risks are expected to be minimized.

The operational strategy considers the risks associated with the current COVID-19 pandemic. As of December 14, a total of 4,709 cases have been reported in the country, with 162 deaths, according to figures reported by the World Health Organization¹⁰. ith this indicator of the presence of the virus at community level and given the levels of overcrowding in collective centers, the risk of contamination is high. However, these risk factors have also been taken up in this proposal and actions are proposed to reduce exposure to the contagion.

Another element of risk is the occurrence of cases of dengue and Malaria. The latter has had increased rates of cases in recent months, especially in the municipality of Waspan, were the MINSA¹¹ detected 202 cases in November 8th.

The NS will continue to monitor the situation closely and review the current Plan of Action if necessary, taking into account developments in the COVID-19 situation and the operational risks that could develop, including operational challenges

¹⁰ [Who](#), December 7, 2020

¹¹ [El 19 Digital, Ministry of Health detects 202 cases of Malaria in shelters on the North Caribbean Coast](#), November 8th, 2020

related to access to the affected population, the availability of items, procurement problems and movement of NS volunteers and staff.

3. Sociopolitical context:

The year 2021 is an election year and the likelihood of tensions and conflicts is high, which could affect the development of the intervention. Nicaraguan Red Cross has developed a Contingency Plan for elections where it will implement security measures for the development of the operation and Safer Access measures will be considered.

B. Operational Strategy

General Operational Objective

This action plan will attend a total of **8,500 families (42,500 people)** in the heavily affected communities of Puerto Cabezas, Waspan, Prinzapolka, Jinotega, Rivas and Managua. Note: Total NS response: 60,000 people (12,000 families)

Overall goal

Contribute to the reduction of the effects of the humanitarian crisis left by the passage of Hurricane Eta and Hurricane Iota by supporting response, care and early recovery by meeting vital needs for their survival to families in the communities of Puerto Cabezas, Waspan, Prinzapolka, Jinotega, Rivas and Managua meeting the immediate needs and supporting the recovery of **8,500 families (42,500 people)** for a duration of **18 months**, in the areas of Shelter, Livelihoods and Basic Needs, Health, Water, Sanitation and Hygiene, Protection, Gender, and Inclusion, Disaster Risk Reduction, and Migration. Note: Total NS goal is 12,000 families and 60,000 people

The proposed strategy will maintain the coordination established with SINAPRED from the central base to the departments where the NRC will implement activities operations. In this way the NRC will obtain official data and reports that allow a continuous monitoring and evaluation system that effectively provides the identification of particular needs. One of the strengths that the Nicaragua health system has is an updated population census, where it is disaggregated by gender, ethnicity, disability and age groups, in this way the NRC will ensure actions considering factors for protection, gender and inclusion.

In order to ensure the involvement of national and local government actors, a letter-of-agreement or MOU may be signed to further formalize the commitments made by the parties.

The response will adopt a Community Engagement and Accountability approach, committing to integrate communities and facilitating participation to help them apply their local knowledge. For that, the NRC will establish community assemblies that will enable the NRC to listening and understanding communities' concerns, suggestions, and complaints to achieve a proper and informed response. The NRC will evaluate the results of the action plan while at the same time ensuring that the population is empowered and is part of the decision-making process to adapt the interventions, and mitigating risks.

It is crucial to highlight that CEA is about committing to integrate communities and facilitating participation to help them apply their local knowledge. It is also about listening and understanding communities' concerns, suggestions, and complaints to achieve a proper and informed response. Activities seen across EPoAs are focusing mainly in the development of IEC materials, health promotion campaigns but more needs to be seen in including local stakeholders in informing decision making.



Nicaraguan Red Cross Resources

Resources

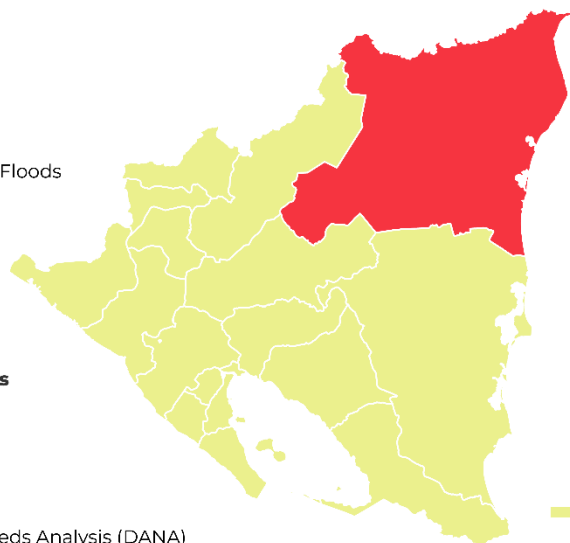
National EOC (32 Branches)

8 Ambulances
 2 Rescue Units
 5 Pre-Hospital Care
 12 Technical Rescue Units for Floods
 4 Drivers
 1 Radio officer

Services provided

National Intervention Teams

General
 Logistics
 Water and Sanitation
 Psychosocial support
 Pre-hospital care
 Restoring Family Links
 Damage Assessment and Needs Analysis (DANA)
 Technical Rescue Units for Floods (TREPJ)



Yellow Alert
 Red Alert

Resources



63
 National ambulances



13
 Trucks



3
 Vehicles



1,520
 Volunteers



3
 Boats

Source: Nicaraguan Red Cross

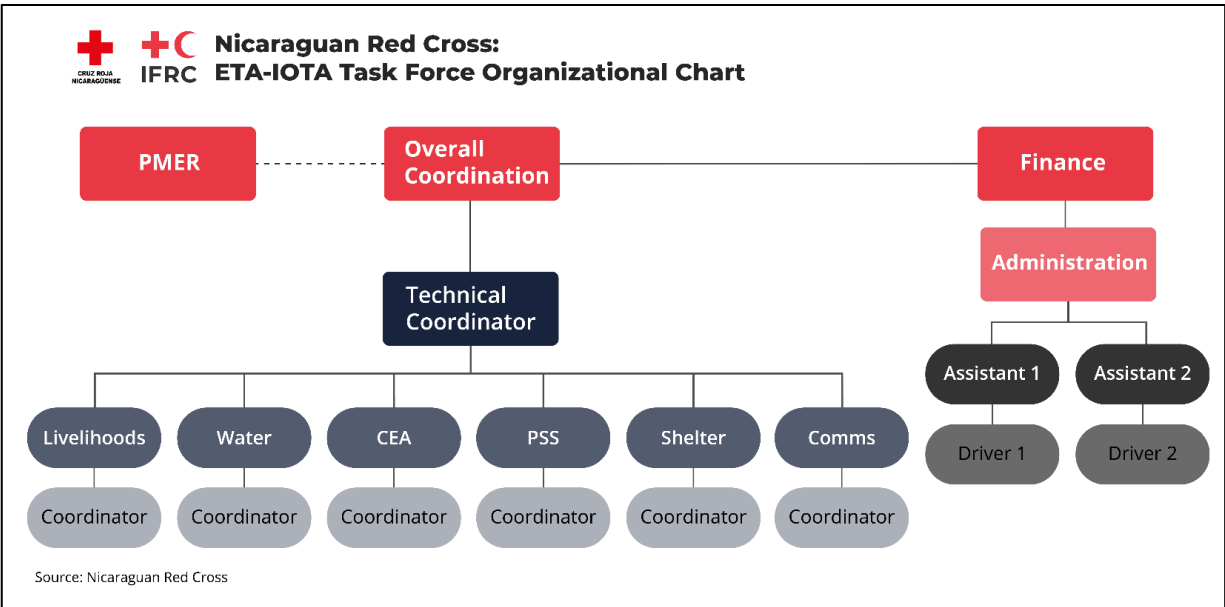
The maps used do not imply the expression of any opinion on the part of the International Federation of Red Cross and Red Crescent Societies or National Societies concerning the legal status of a territory or of its authorities

Human Resources

To implement the operation, the NRC is comprising a team made up of staff and 1,520 volunteers. There are specialized volunteers trained to develop activities focused in all the areas included in this operation, from first response services to early recovery processes. However, additional operational resources may necessary to provide support to vulnerable groups. The proposed actions are possible with NRC staff and volunteers who have specialized training in the following technical areas: National Intervention Teams (NIT), in Emergency Health and Epidemic Control, Health and Community First Aid (CBHFA) Water and Sanitation, Participatory Transformation methodology for Health, Hygiene and Sanitation (PHAST) and a technical and management team that ensures the functional operation of the project.

The Federation-wide approach will also be applied to providing surge support to the NS, when requested. Where required, priority will be to consult with PNSs with a presence in-country whether they can second any of their existing personnel to support the response. Surge alerts for personnel from outside of the country will be sent via the ARO or Geneva only if none of the in-country partners have the requested profile locally.

Specific to the response to Eta –Iota, the NRC has a dedicated task force with technical experts for each sector of intervention and with support from the finance and administrative areas.



The NRC has existing material capacity with vehicles, i.e. a fleet (trucks, pre-hospital units -ambulances, light vehicles), and it has water treatment plants and specialized equipment, however, given the remote location of the intervention, equipment and vehicles will require a complete maintenance. The water treatment systems will require maintenance including parts and materials that are required for water quality tests among others. Additional operational resources are necessary to provide support to vulnerable groups.

Proposed strategy

The intervention strategy defines first-response actions to meet the basic needs of the affected population and subsequently proposes actions to enable the recovery of communities and the family in the longer term.

First-response actions will include delivering food kits, personal hygiene items, and COVID-19 prevention supplies, to families and collective centers, selected by municipality authorities and community leaders. At the same time, the distribution of safe water for the population will be supported by disinfection of the communities' own water sources, for this purpose the NIT team specialized in NRC water will be activated, as well as water treatment plants will be put into operation.

A quick evaluation of families requiring temporary accommodation will be carried out for the delivery of tarpaulins, subsequently the families who will need to be provided with materials for the construction of their home and / or rehabilitation of it will be assessed.

Aware of the emotional impact on the population given the stressors they have been exposed to, as well as the impacts on their physical health, as part of the first intervention a psychosocial care team led by mental health specialists, doctors and National Intervention Team members in Psychosocial Support, have been deployed to meet the psychosocial and medical needs of the affected population. These activities are being coordinated with the Ministry of Health. Another key element is the Reestablishment of Family Links (RFL) since this contributes to the good emotional state of the families. Having news of their relatives who have been in the impact zone where communication has been suspended is essential and the NRC can respond in this sense, due to its presence in the zone, by establishing communication channels to enable the connection of separated family members.

Once the basic needs of the affected population have been met, a medium-term plan will be implemented with actions for the prevention of diseases of vectorial and water origin, basic sanitation and an information and awareness campaign with key issues associated with the intervention such as dengue fever prevention, malaria, COVID 19. Support for the recovery of livelihoods will also be included, using cash assistance where feasible. Disaster risk reduction actions will also need to be developed taking into account the importance of preparedness and mitigation, as well as increasing risk perception with a focus on climate change and ecosystems and behavioral changes that focus on self-care and community protection.

In order to address the emergency, NRC requires strengthening operational capacity by improving the communications with branches and Headquarters, which will involve improving telecommunication in the Caribbean region, as well as needing to strengthen staff capacity for emergency care and the development of operational actions itself.

Logistics

Coordination actions are being carried out with the logistics unit of the Regional Office of the IFRC in Panama to strengthen the logistics capacity of the National Society for the distribution of humanitarian aid to the affected areas.

The purpose of activities in logistics is to effectively manage the supply chain, including mobilization, procurement, customs clearance, fleet, storage and transportation to distribution sites, in compliance with the requirements of the operation and in line with IFRC's logistics standards, processes and procedures.

Prior every importation process, the National Society needs to get the approval from the National Government, specifically the Ministry of Foreign Affairs. All the procedures needs to be strictly followed and all the shipments need to be closely coordinated. The Regional Logistics Unit will manage all the coordination with the counterpart of the NS and will advise the next steps for any coordination.

A mobilization table is published and updated periodically, according to the operation needs.

Communications

From the communication area, newsletters have been generated about the actions that have been developed by the NRC since the beginning of the response, which are disseminated through social media and shared with the different partners and donors, as part of the accountability mechanisms. Media coverage is available nationwide to publicize all the response actions that the organization is carrying out.

Community engagement and accountability (CEA)

Community Engagement and Accountability approaches will ensure that participation of local people and communities are at the center of the response. Through appropriate and culturally tailored activities, NS will ensure understanding and uptake of protective measures to increase healthy behaviors at household and shelters level. Activities to promote and understand barriers and enablers of personal hygiene, self-care and environment care, risk reduction and restoration of family contacts as a product of the disaster will need to be understood and responded to.

CEA assessment to identify what are the most trusted, accessible and preferred channels will be an essential step to guarantee efficient dialogues with communities, and their involvement in the decision-making processes. Channels can range from social media platforms, national and local television channels, WhatsApp, radio, or educational materials. The CEA approach is crosscutting and considered for the activities implemented as part of the different intervention strategies. It seeks to integrate communication and participation for the affected and targeted communities. The activities proposed as part of the CEA approach include: Establish two-way communication dialogues with communities to support community preparedness and primary response actions, promote physical and mental health during and after the flooding emergency through social networks, small group sessions, newsletters other actions. Similarly, establish a mechanism for complaints, consultations, and recommendations during the emergency. CEA support will be provided to other areas such as Shelter, Health, WASH, Livelihoods, PGI, and in the case of Cash interventions, the CEA toolkit for cash programs will be used.

From the early actions of response, it is intended to include the CEA approach, for which it is important to work with the teams that are doing the needs assessments to incorporate some key questions to develop community participation activities in the intervention. Additionally, information as aid actions will be reinforced the public awareness messages not only for the emergency response, but to emphasize the protection messages for COVID-19 and Dengue.

The regional CEA team will support the National Society in implementing feedback mechanisms, as well as support the process of collect, analyze, interpret and use the feedback data to address questions, doubts and identify rumors that are circulating in the communities. The information collected through these mechanisms will feed into the intervention areas to improve, change or improve the intervention.

The reinforcement and institutionalization of community engagement and accountability is a key deliverable of the EA considering the necessity to raise the National Society's standard when planning, consulting, and delivering aid to affected populations. In the recovery phase, the CEA team will work with the NSs to define clear standard.

Security: National Societies are responding to the emergency and providing much-needed support and assistance. Volunteers and staff have been deployed to remote locations following safety protocols to protect communities and resources. Activities are being supported by the Americas Regional Office and working together with Red Cross Movement partners, authorities, community organizations, and other organizations. Iota's actual impact will be clearer within a couple of days when humanitarian responders and assessment teams can arrive in the affected areas. Damages assessments have been delayed due to access and lack of stability in communications. Thanks to Airbus Air Foundation, the Red Cross teams are conducting air assessments and distributing initial humanitarian aid.

At the regional level, a security surge is responsible for supporting deployments and compliance with pre-travel requirements. Additionally, he supports in the coordination with units, departments and PNS for the clarification of security procedures in Central America and supports in the process of guiding the updating of the MSR.

- Progress is being made in the coordination with the National Society and the IFRC Regional Security team, recollecting security documents and protocols, which will pragmatically help to ensure the duty of care of our staff and volunteers in the region.
- Regional Security Unit, in support of the Head of Country Cluster, continues to coordinate the regional **Business Continuity Plans Team** of the offices and missions in the Americas region, guiding offices and personnel in procedures, based on the global instructions of the Business Continuity Plans Team in Geneva and through constant evaluation in coordination with the heads of our offices and clusters.
- The Regional Security Unit has contributed to the coordination of **BCP in Nicaragua** and an IFRC Emergency Plan was approved during the COVID-19 and the pass of hurricanes by ensuring synergy with the National Society and to promote the duty of care and biosecurity.
- In terms of Operational Security, the technical team involved in the operation, in coordination with the NSs Security Focal Point and IFRC Security guidance will prepare a Security Plan in Nicaragua to ensure the physical integrity of the Volunteers and management team. The IFRC works hand in hand with the National Society to strengthen its Civil-Military Relations (**CMR**), which will allow for the continuity of the relationship with civil and military entities in the humanitarian sector, leading to the development of strategic allies.

More training in operational security is necessary and would promote greater protection to those who protect the communities. This requires an initial training in operational security that covers the basic parameters necessary to keep an installed capacity to improve the processes of how to make briefings, debriefings, what are the situations of insecurity that can be faced in the field, how to report a security incident and create a monitoring mechanism, Civil-Military Relations (CMR), among others. Understanding the context of the COVID19 pandemic, the IFRC Office required a review of the Minimum Security Requirements (MSRs) on site and an articulation of the different support areas and units part of the Business Continuity Plan (BCP) Team to support the emergency while ensuring the duty of care of the personnel, the people we serve, and the partners we are working with. At the regional level, a security surge is responsible for supporting deployments and compliance with pre-travel requirements. Additionally, support in the coordination with units, departments and PNSs for the clarification of security procedures in Central America and support in the process of guiding the updating of the MSR.

PMER: In response missions to impact zones, a person from the NRC is designated to guarantee the communication of activities to the NRC's Monitoring Commission (planning, monitoring and evaluation unit within the NRC), whose actions are recorded in situation reports that are disseminated daily internally by the Red Cross network, movement partners and donors. Reports are also kept on the actions carried out at the branch level and in the planning and project area.

The Federation-wide approach will be maintained in PMER. In this regard, the IFRC Central America Country Cluster Support Team (CCST) and ARO in Panama will support the NS in ensuring a coordinated approach with all NSs with presence in the countries and NSs supporting without a presence in the countries and region. The IFRC Secretariat will ensure Federation-wide reporting on financial and operational indicators, as well as an updated 3Ws report (showing who is doing what, where in support of the operation.) Support channeled via the IFRC Emergency Appeal will be included in the [donor response list](#) that will be available publicly

C. Detailed Operational Plan



Shelter

Target Population: 42,500 (8,500 families)

Men: 17,000

Women: 25,500

Requirement (CHF): 856,015.00

There were many families affected both in the hurricane's impact zone, such as Puerto Cabezas and the Triangulo Minero, as well in flood-affected areas which saw flooding of rivers and landslides in the north and south-central part of the country. Around 116 communities have been affected and among them people have lost their homes partially or completely, having had to stay longer in the collective centers. Consequently, it is proposed to deliver emergency shelter assistance through the provision of shelter kits (1 shelter tool kit and 2 tarpaulins) and orientation to the affected population on the best way of the provided assistance, the possibility of making repairs to the affected houses is under discussion and will depend on the assessment's information (the type of repairs or construction will be determined once the assessments are completed).

On the other hand, as long as the population remains in the collective centers, minimum conditions are being created for a dignified stay, by delivering Blankets, Supply of kitchen sets and other Household items.

Population to be assisted: The population served will be prioritized by the municipal authorities in such a way that efforts are not duplicated. Other vulnerable groups including single mothers, people with disabilities, older adults will be considered.

P&B Output Code	Shelter Outcome 1: Families in communities in the municipalities of Waspan, Prinzapolka and Puerto Cabezas affected by Hurricane Eta restore and strengthen their safety, well-being and recovery through shelter and settlement solutions	# of people provided with emergency shelter and settlement assistance Target: 42,500 people																	
	Shelter Output 1.1: Short-term and mid-term shelter and settlement assistance is provided to affected households	# of families are provided with emergency shelter and settlement assistance Target: 8,500 families																	
	Activities planned Month	1	2	3	4	5	6	7	8	9	10	11	12	13	14	15	16	17	18
AP005	Assessment of shelter needs, capacities, and gaps																		
AP005	Identification of cases and verification of beneficiaries in different target groups (including integrated factors such as gender, diversity, and disability in the response)																		
AP005	Identifying the appropriate form of support for each case																		
AP005	Coordination with the government and other stakeholders																		

AP005	Local market analysis to determine availability/access to household and accommodation items (can be two separate activities)																			
AP005	Procurement and distribution of 8,500 shelter kits (1 shelter tool kit and 2 tarpaulins)																			
AP005	Procurement and distribution of 8,500 kitchen sets																			
AP005	Procurement and distribution 17,000 Blankets (2 blankets per family)																			
P&B Output Code	Shelter Output 1.2: Technical support, guidance and awareness raising in safe shelter design and settlement planning and improved building techniques are provided to affected households	<i># of families receiving Technical support, guidance, and awareness Target: 8,5000 families</i>																		
		<i># of volunteers and staff trained on PASSA Target: TBD</i>																		
	Activities Planned Month	1	2	3	4	5	6	7	8	9	10	11	12	13	14	15	16	17	18	
AP005	Evaluation of the adoption of technical guidance such as of information, education, and communication (IEC) materials																			
AP005	Orientations to volunteers and to affected household on the best use of the provided shelter assistance and distribution of household items																			
AP005	Orientations on assessments implementation for volunteers																			
AP005	Orientations to affected households on the best use of the distributed shelter and household items																			
AP006	The technical guidance and support to be provided to the affected population in the early recovery phase will be determined and tailored once the exact nature of the intervention becomes clear																			
AP006	Post distribution monitoring of household items																			
AP006	Participatory Approach for Safe Shelter Awareness (PASSA) Workshop for volunteers and staff																			



Livelihood and basic needs

Target population: 25,000 people (5,000 families)

Men: 10,000

Women: 15,000

Requirement (CHF): 752,210.00

The population of the communities in the North Caribbean Region of Nicaragua is mostly engaged in artisanal fishing and agriculture, with the passage of the hurricanes, livelihoods, have been affected, with floods in the growing areas, as well as saltwater intrusion to the communities destroying their tools and work

instruments such as pangas, cayucos fishing nets, and the entire loss of crops, especially the coastal communities of both Puerto Cabezas and Prinzapolka and the communities of the Coconut river. Taking into account these needs it is proposed the recovery of tools for fishing, delivery of seeds and fruit plants to rehabilitate crops, promote other sources of income such as the rehabilitation of small businesses through Cash transfers, which will be accompanied by an appropriate investment management training process.

Nicaragua Red Cross has some relevant experience in Cash and Voucher Assistance (CVA), it has been led so far by the Nicaragua Red Cross Psychosocial Center. On top of that there is an ongoing Cash Transfer Program under the COVID-19 response under the agreement of Walmart to provide vouchers and cash transfers to affected people and volunteers. When it comments to affected by Eta and Iota the market assessment will guide us to select the most suitable option to support to the targeted families. The initial plan is to provide food package and the tool for fishing and the seeds and fruit plans as it was demanded in the assessments carried out by the team from Nicaragua Red Cross. However , if CVA is considered as the most suitable option, Nicaragua Red Cross is open to make the proper adjustments in future operational updates

P&B Output Code	Livelihoods and Basic Needs Outcome 2: Families in hurricane-affected communities recover and strengthen their livelihoods	<i># of people whose livelihoods are <restored to/ improved from> pre-disaster level Target: 5,000</i>																	
	Livelihoods and Basic Needs Output 2.1: Families have received cash, voucher or in-kind assistance to meet their basic needs and regain their livelihoods.	<i># Families who have received technical assistance to recover their livelihood Target: 1,000</i>																	
	Activities Planned Month	1	2	3	4	5	6	7	8	9	10	11	12	13	14	15	16	17	18
AP007	Technical assistance for families in recovering their livelihoods (crops, fishing tools, good agricultural practices / climate resistant crops / integrated pest management)																		
AP007	Training for small business management																		
P&B Output Code	Livelihoods and Basic Needs Output 2.2: Basic needs assistance for livelihoods security including food is provided	<i># of households that have enough food to meet their survival threshold for a month Target: 5,000 families</i>																	
	Activities Planned Month	1	2	3	4	5	6	7	8	9	10	11	12	13	14	15	16	17	18
	AP008	Delivery of food kits and/or cash transfer to 5,000 selected families																	
AP008	Livelihoods and feasibility study of Cash and Voucher Assistance																		
AP008	Post distribution monitoring of food kits and/or cash transfers																		
P&B Output Code	Livelihoods and Basic Needs Output 2.3: Household livelihood security is improved through food production, increased productivity and post-harvest management	<i># of households whose livelihoods are <restored to/ improved from> pre-disaster level Target: 1,000 families</i>																	
	Activities Planned Month	1	2	3	4	5	6	7	8	9	10	11	12	13	14	15	16	17	18
	AP009	Procurement and distribution of livelihood supplies (seeds, fishing tools, etc.) in kind or in cash for 1,000 families																	
AP009	Market Assessment																		
AP009	Delivery of business supplies																		



Health

Target population: 42,500 (8.500 families)

Men: 17,000

Women: 25,5000

Requirement (CHF): 179,879.00

There are important health impacts on the population, both physical and mental/ emotional after these disasters. Taking into account the context of the COVID -19 pandemic, it is necessary to carry out actions focused on epidemic prevention and control; the provision of personnel protective equipment to volunteers and people that participates in health promotion and disease prevention days, to safeguard health and avoid contagion is key. It is also important to attend to the emotional health to provide a space for the population most affected to attend their grief processes or losses especially to families who lost their homes, and to promote the management of the stress to which they were subjected during the event.

There is a risk of proliferation of vector-borne diseases. It is also important to include actions related to the prevention of COVID-19.

Population to be assisted: Communities in areas where flooding took place and where families lost their homes or had their livelihoods affected; communities with increased risk of dengue and/or malaria outbreaks; people (including children and adolescents) whose mental health has been affected by the events.

8,500 families are expected to have physical and emotional health impacts.

Standards / Benchmarks: Health actions are based on Sphere standards

P&B Output Code	Health Outcome 3: The immediate risks to the health of the affected populations are reduced through improved access to medical treatment	# of households have improved access to medical treatment Target:8,500 families																		
	Health Output 1: The health situation and immediate risks are evaluated according to established parameters	Assessed the health needs of the population in the selected communities Target:																		
	Activities Planned Month	1	2	3	4	5	6	7	8	9	10	11	12	13	14	15	16	17	18	
AP011	In coordination with health authorities, conduct detailed assessments to determine health needs, and the most affected communities																			
AP011	Develop a rapid analysis of the situation in different areas to assess communities' risk practices, as well as to track myths and knowledge gaps.																			
P&B Output Code	Health Output 3.2: The target population is offered disease control and health promotion at the community level	NRC Volunteers and population gain knowledge and skills on epidemic prevention and control and basic health services related to chronic diseases during emergencies in the affected areas Target: 1,200 people																		
		Activities Planned Month	1	2	3	4	5	6	7	8	9	10	11	12	13	14	15	16	17	18
AP084	CEA activities to promote epidemic prevention and control community-based health promotion (Dengue, Cholera, Leptospirosis, Malaria), educational sessions with leaders, children, and adolescents.																			

AP011	Health care services to people with chronic diseases: Measure blood pressure, and glucose control.																		
AP011	Train NRC volunteers on ECV to be able to transmit health promotion and disease prevention messages to the target population																		
AP011	Develop and implement health promotion and disease prevention activities at a community level targeting the specific risks found at the assessments performed at Output 3.1																		
P&B Output Code	Health Output 3.3: Improved access to health care and emergency health care for the targeted population and communities.	<i># of people that have improved the access to health care and emergency health care Target 8500 families</i>																	
	Activities Planned Month	1	2	3	4	5	6	7	8	9	10	11	12	13	14	15	16	17	18
AP022	Purchase of first aid kits																		
AP022	Provide services of First Aid																		
AP022	Training in Health in emergency																		
P&B Output Code	Health Output 3.4: Transmission of diseases of epidemic potential is reduced	<i># of mosquito nets delivered to affected families Target: 8,500 families</i> <i># of people reached through a health promotion and disease prevention campaign Target: 1,200</i> <i># of people and volunteers who receive PPE kits in health promotion and disease prevention days Target: 1,000</i> <i># of people reached with activities aiming to control vector-borne diseases Target: 4,000 people</i>																	
	Activities Planned Month	1	2	3	4	5	6	7	8	9	10	11	12	13	14	15	16	17	18
AP030	Purchase and distribution of 17,000 mosquito nets (2 mosquito nets per family)																		
AP011	Roll out of three perception surveys about COVID-19 and other diseases																		
AP011	Health and hygiene promotion campaigns on the prevention and control,of COVID-19 and communicable diseases such as malaria, Dengue, diarrhea, and other morbidities that may emerge																		
AP011	Implement a feedback mechanism																		
AP011	Reproduce and distribute information, education and communication materials on community-based disease prevention, epidemic preparedness and health promotion, complemented by the use of social media and youth as behaviour change agents (YABC). ¹¹																		
AP084	CEA Training for volunteers and Staff																		
AP011	Delivery of 1,000 PPE kits for volunteers and participants in training sessions																		
AP030	Sessions for communities on vector-borne control																		

AP030	Purchasing and delivery of 700 kits for the identification and elimination of breeding sites																		
AP030	identify and eliminate breeding sites at the community level																		
AP030	Educational activities in coordination with MINSA																		
AP030	Fumigation																		
P&B Output Code	Health Outcome 4: Diminished psychosocial impacts on affected population	<i>#of people reached with psychosocial support Target: 3,000</i>																	
	Health Output 4.1: Psychological support provided to the target population and to NRC volunteers	<i># of people who received psychosocial support Target: 500 families (2,500 people)</i> <i># of volunteers and staff reached with psychosocial support Target: 500 Volunteers and staff</i>																	
	Activities Planned Month	1	2	3	4	5	6	7	8	9	10	11	12	13	14	15	16	17	18
AP023	Intervention in Psychological First Aid and Psychosocial Support to families in shelters to work grief and loss, coping mechanisms and stress management.																		
AP023	Accompaniment in PSS sessions in schools																		
AP023	Support sessions and psychosocial care with Nicaraguan Red Cross volunteer staff at affected branches and National Headquarters.																		
AP023	Acquisition of 600 PSS kits for children, adolescents, adults.																		



WASH Water, Sanitation, and Hygiene

Target Population: 42,500 (8,500 families)

Men: 17,000

Women: 25,500

Requirement (CHF): 1,802,939.00

It is necessary to evaluate the conditions of water sources, the quality of water for human consumption and preventive health actions (Sanitation), for populations returning to their homes and those who have to remain in collective centres because they have lost their homes. Therefore, it is necessary to:

- Evaluate the conditions of water sources and water quality. As well as hygiene and sanitation conditions.
- Provide safe water to affected communities by installing emergency water treatment plants, cleaning and disinfecting community wells.
- Rehabilitate or build latrines.
- Promote community sanitation campaigns for disease prevention; Garbage and solid waste management.

Risk analysis: That water sources are not suitable for human consumption given the type of contamination.

Population to be assisted: Expected to reach 3,000 families in Waspan, Prinzapolka and Puerto Cabezas with sanitation actions and up to 8,5000 families with safe water access and hygiene items.

Standards / Benchmarks: The proposed WASH activities follow Nicaragua's national standards and Sphere standards for water distribution and the content of the International Federation's family hygiene kits.

P&B Output Code	WASH Outcome 5: Families reduce the risk of waterborne and water-related diseases in selected communities	<i># of people provided with safe water services that meet agreed standards according to specific operational and programmatic context Target: 15,000 people (3,000 families)</i>																	
	WASH Output 5.1: A continuous assessment of the water, sanitation and hygiene situation is carried out in the selected communities	<i># of volunteers trained in WASH Target: 200</i>																	
	Activities Planned Month	1	2	3	4	5	6	7	8	9	10	11	12	13	14	15	16	17	18
AP026	Conduct training of NRC volunteers in the implementation of water, sanitation and hygiene assessments																		
AP026	Conduct an initial assessment of the water, sanitation and hygiene situation in selected communities																		
AP026	Continuously monitor the situation of water, sanitation and hygiene in selected communities																		
AP026	Coordinate with other WASH actors the needs of the target group and the appropriate response.																		
P&B Output Code	WASH Output 5.2: Target populations are provided with daily access to safe water that meets Sphere and WHO standards for quantity and quality	<i># of water wells cleaned and disinfected Target: 300</i> <i># of people trained in safe water storage, use of water treatment products Target: 15,000</i>																	
	Activities Planned Month	1	2	3	4	5	6	7	8	9	10	11	12	13	14	15	16	17	18
AP026	Provide drinking water to 3,000 families in communities daily installing water treatment plants for domestic use																		
AP026	Determine the appropriate method of home water treatment for each community based on the efficacy and preference of users.																		
AP026	Distribution of water filters and water collectors (jerrycans) for 3,000 families																		
AP026	Train the population of the target communities on the storage of safe water, on the safe use of water treatment products)																		
AP026	Monitor water treatment and storage by surveys and quality tests at homes																		
AP026	Cleaning and disinfecting 300 community wells																		
P&B Output Code	WASH Output 5.3: The target population is provided with adequate sanitation that meets Sphere standards for quantity and quality	<i># of latrines installed Target: 3000</i>																	
	Activities Planned Month	1	2	3	4	5	6	7	8	9	10	11	12	13	14	15	16	17	18
AP028	Selection of latrine design, considering cultural preferences, safety, access for children and the disabled, anal cleaning																		

	practices, national standards, as well as environmental impact and sustainability																		
AP028	Build or rehabilitate latrines in the target communities																		
AP028	Create cleaning roles to ensure latrines are clean and maintained through a cleanup plan with community mobilization																		
AP028	Mobilize target communities to build latrines and carry out environmental sanitation activities.																		
P&B Output Code	WASH Output 5.4: Hygiene promotion activities that meet Sphere standards for the identification and use of hygiene items provided to the target population	<i># of people reached with key messages to promote personal and community hygiene Target: 15,000</i>																	
	Activities Planned Month	1	2	3	4	5	6	7	8	9	10	11	12	13	14	15	16	17	18
AP030	Conduct a needs assessment of Sanitation and hygiene																		
AP084	Develop a communication - CEA plan on hygiene promotion. Train volunteers to implement communication plan activities																		
AP030	Design/Print information materials on disease prevention, solid waste management and litter																		
AP030	Evaluate progress and analyze results.																		
AP030	Involve the community in the design and acceptability of water and sanitation facilities.																		
P&B Output Code	WASH Output 5.5: Items (NFI) provided to beneficiary families, hygiene-related goods that meet Sphere standards and training is provided on how to use these goods	<i># families reached with hygiene items Target: 8,500</i>																	
	Activities Planned Month	1	2	3	4	5	6	7	8	9	10	11	12	13	14	15	16	17	18
AP030	Purchase and distribution of 8,500 family hygiene kits																		
AP030	Training the population on the importance of personal hygiene for COVID-19 prevention																		
AP030	Monitor the use of hygiene kits and water treatment products and user satisfaction through home surveys and household water quality testing.																		
P&B Output Code	WASH Output 5.6: Cleaning, fumigation, well disinfection, waste management activities	<i># of people reached with days of fumigation, cleaning, well disinfection and waste management Target: 15,000</i>																	
	Activities Planned Month	1	2	3	4	5	6	7	8	9	10	11	12	13	14	15	16	17	18
AP030	Conduct fumigation days in homes and accommodation centres to avoid vector-borne and polluting diseases in pregnant women, children, and the elderly.																		
AP030	Purchase of thermo nebulizers and fumigation pumps																		
AP030	Training staff to use the equipment.																		
AP030	Talk on hygiene promotion (PHAST methodology)																		



Protection, Gender, and Inclusion

People targeted: 500

Male: 200

Female: 300

Requirements (CHF): 10,224.00

Needs analysis: The population of Puerto Cabezas is very heterogeneous, due to its multi-ethnic character, where 72.3% belongs to the Miskito ethnic group, 21.7% to the mestizo ethnic group, 5.7% to the Creole ethnic group and 0.3% to the Sumu ethnic group; there is a total of 46 indigenous communities in the municipality and this creates the necessity to have a multicultural approach in the response. According to research of local universities, the communities have shown high rates of domestic violence, intimate partner violence and gender-based violence including pregnancy in girls and adolescents with high rates of femicides compared to other regions²⁰, protection risks that are very likely to increase during this emergency. Around 500,000 children affected will face risks such as psychosocial impact, separation from their caregivers and protection.

The National Society counts with a Gender Policy, a Violence Prevention, Mitigation and Response Strategy and a Code of Conduct which entails a robust set of internal safeguarding mechanisms which require to be included into the emergency operation itself, to mainstream PGI into their current response actions.

Population to be assisted: Staff, volunteers from the NRC including all the teams that will develop the activities in all sectors (WASH, Livelihoods, Health, Shelter, DRR and Migration) will be trained in their Internal Safeguarding Mechanism.

Program standards/benchmarks: NRC Internal Safeguarding Mechanism, Minimum standards for protection, gender and inclusion in emergencies, IFRC's Gender and Diversity Policy, laws and regulations of the Nicaragua state, IFRC Global Strategy on Migration 2018 – 2022.

P&B Output Code	Protection, Gender & Inclusion Outcome 1: Communities become more peaceful, safe and inclusive through meeting the needs and rights of the most vulnerable.																		
	Protection, Gender & Inclusion Output 1.1: Programmes and operations ensure safe and equitable provision of basic services, considering different needs based on gender and other diversity factors.											# of staff and volunteers trained in Code of Conduct, Gender and the security Standard Commitments. Target: TBD							
	Activities planned Month	1	2	3	4	5	6	7	8	9	10	11	12	13	14	15	16	17	18
AP031	Hold basic training with IFRC and NS staff and volunteers on the Protection Minimum Standards (or integrate a session on Minimum Standards in standard/sectorial trainings).																		
AP031	Awareness raising sessions on SGBV, child protection, trafficking in humans etc. in community by outreach activities and as well as in the temporary shelters,																		
AP031	Hold basic trainings with IFRC and NS staff and volunteers on Code of Conduct, the PSEA Policy and the Child Protection Policy, and other internal safeguarding mechanisms.																		
AP031	Develop service mapping on existing services for protection and establish referral pathway for all the protection cases identified,																		

AP031	Support all operations to integrate PGI considerations in their assessment																			
AP031	Supporting all operations to collect gender, age and disability disaggregated data,																			



Migration

Target population: 1000

Men: 400

Women: 600

Requirement (CHF): 28,223.00

Needs analysis: Taking into account that one of the aftermath effect of large disasters is the loss of contact with families, it is proposed to carry out an initial diagnosis to assess existing needs, identify shelters that merit greater attention and prioritization of cases and subsequently proposes to implement actions such as establishing calls to relatives through cell phones for the RFL/ network. In distant communities it will be done via HF radios or satellite phones, this will allow the family to reduce stress by knowing that their family member is ok and allow them to resume their activities and start the recovery phase.

Population to be assisted: Some 250 families are expected to be reached with these actions who have not had communication with their families since the disaster and who have a crisis of fear for not having contact with their families.

P&B Output Code	Migration Outcome 6: Communities support the needs of migrants and their families and those who assist migrants at all stages of migration (origin, transit and destination)																			
	Migration Output 6.1: Family contacts are reestablished for people separated from their loved ones as a result of the disaster.															# of families who have successfully reestablished contact with their families Target: 200 families				
	Activities Planned	1	2	3	4	5	6	7	8	9	10	11	12	13	14	15	16	17	18	
AP083	Assessment of the needs of the population to communicate with their families																			
AP083	ACTIVATED RFL Services: Phone Calls, Cell Phone Acquisition																			
AP083	Installing cell phones in temporary accommodation centers at the service of the population to communicate with their family																			



Disaster Risk Reduction

Target population: 1,000

Men: 400

Women: 600

Requirement (CHF): 241,755.00

Needs Analysis: The Northern Caribbean Coast was impacted in less than 15 days by two category 4 and 5 cyclonic events according to the Saffir Simpson scale with catastrophic destruction capacity, which endangered the lives of the population of the region and the Pacific center of the country, leaving significant damage and loss of human life. Faced with these risk scenarios, which are becoming more frequent and intense every year, there is an urgent need to promote risk reduction and adaptation actions to climate change that will increase the resilience of populations, increasing the perception of risks to safeguard the lives of the most vulnerable populations.

The region's poverty indexes with fragile housing, limited safe water and sanitation conditions and a fragile infrastructure in basic services, make the population even more vulnerable to events of this magnitude. It is important to generate dialogues with local and national development actors to focus efforts on a more comprehensive risk reduction.

Taking into account the extreme events that have recently occurred both in frequency and intensity to which Nicaragua has been exposed, it is necessary to continue with actions to prepare the response for communities, actions to adapt to climate change that will allow for better conditions to deal with emergencies, as well as actions to inform and raise awareness about risks in order to generate a greater perception of risk and promote changes in behavior.

There is a pressing need to reinforce the tele communications with Puerto Cabezas to ensure the communications and coordination with the branches located in the Northern Caribbean Coast. The setup of the tele communication antenna will improve the operational capacity of the branches located in the affected areas.

Risk Analysis: according to the Global Climate Risk Index (Germanwatch, 2019), in recent years Nicaragua has been listed as one of the 10 countries with the highest level of exposure and vulnerability to extreme weather events between the periods 1998-2017; it is currently in sixth place in the ranking. The Caribbean Coast is located in the hurricane route; therefore, it is a threat every year, during the hurricane season. The Caribbean has long and mighty rivers, as well as in the south and center of the country, which historically overflow generating severe flooding for entire communities that have to leave to protect their lives, but lose their goods and livelihood, leaving the population increasingly poor and without resources.

Population to be assisted: communities with the highest vulnerability indexes will be selected for their location, poverty indexes, high population numbers, organization, and leadership.

Standards / Benchmarks: the proposed activities comply with the Sphere standards focused on risk reduction.

P&B Output Code	DRR Outcome 7: Communities in high-risk areas are prepared for and able to respond to disaster																	
	DRR Output 7.1: Communities take active steps to strengthen their preparedness for timely and effective response to disasters.																	
	Activities Planned Month	1	2	3	4	5	6	7	8	9	10	11	12	13	14	15	16	17
AP001	Conduct vulnerability and capacity analysis in communities for risk analysis.																	

30 communities prepared to respond to disasters

1,000 people prepared to respond to disasters

20 of communities that have community contingency plans

AP001	Carry out a risk reduction plan based on VCA																			
AP084	Raise community awareness of risks and appropriate actions by disseminating the key DRR messages of Awareness and Public Education																			
AP001	Training of Community Committee on Disaster Preparedness in DRR																			
AP001	Elaboration of contingent plans at community level and carrying out of drills																			
AP001	DANA Workshop																			
AP001	Develop the capacity of the NRC to accompany, train and connect communities in their resilience efforts: VCA training workshops for volunteers																			
AP001	Workshops for volunteers and branches on DRR and emergency management																			
AP001	Installation of a telecommunication system between branches and HQ																			
P&B Output Code	DRR Output 8.2: Community awareness programs on climate change risks and environmentally responsible practices are carried out in the target communities	<i># people trained in climate change adaptation</i>																		
	Activities Planned Month	1	2	3	4	5	6	7	8	9	10	11	12	13	14	15	16	17	18	
AP004	Community training in climate change adaptation																			

Implementation Strategies

Requeriment (CHF): 1,142,027.00

P&B Output Code	S1.1: National Society capacity building and organizational development objectives are facilitated to ensure that National Societies have the necessary legal, ethical and financial foundations, systems and structures, competences and capacities to plan and perform																		
	Output S1.1.4: National Societies have effective and motivated volunteers who are protected						<i>1,500 volunteers insured</i>												
	Activities planned Week / Month	1	2	3	4	5	6	7	8	9	10	11	12	13	14	15	16	17	18
AP040	Ensure that volunteers are insured																		
AP040	Provide complete briefings on volunteers' roles and the risks they face																		
AP040	Psychosocial support to volunteers																		
AP040	Ensure volunteers are aware of their rights and responsibilities																		
AP040	Ensure volunteers' safety and wellbeing																		
AP040	Ensure volunteers are properly trained																		
AP040	Ensure volunteers' engagement in decision-making processes of respective projects they implement																		

P&B Output Code	Output S1.1.6: National Societies have the necessary corporate infrastructure and systems in place																				
	Activities planned Week / Month	1	2	3	4	5	6	7	8	9	10	11	12	13	14	15	16	17	18		
AP042	Purchase and rental of vehicles																				
AP042	Monitoring visits by the NS response team																				
AP042	Bilwi Branch repair and improvement																				
AP042	Equipment for EOC monitoring rooms (branches, NS, municipality)																				
P&B Output Code	Outcome S2.1: Effective and coordinated international disaster response is ensured																				
	Output S2.1.1: An effective and respected capacity increase mechanism is maintained.									<i>5 field monitoring missions carried out</i>											
	Activities Planned Month			1	2	3	4	5	6	7	8	9	10	11	12	13	14	15	16	17	18
AP046	Field monitoring missions by the CA HoCCST and the DM																				
P&B Output Code	Output S2.1.3: Coordinating role of the IFRC within the international humanitarian system is enhanced.									<i>Federation-wide reporting mechanism developed (Yes/No)</i>											
	Activities Planned Month			1	2	3	4	5	6	7	8	9	10	11	12	13	14	15	16	17	18
	AP059	Coordinate Federation-wide response in consultation with all Federation members through establishment and implementation of a Federation-wide One Plan.																			
P&B Output Code	Output S3.1: The IFRC together with National Societies, uses its unique position to influence decisions at local, national and international levels that affect the most vulnerable.																				
	Output S3.1.2: The IFRC produces high-quality research and evaluations that serve as the basis for promotion, resource mobilization and programming.									<i>Lessons learned workshop developed (Yes/No)</i>											
	Activities Planned Month			1	2	3	4	5	6	7	8	9	10	11	12	13	14	15	16	17	18
AP055	Lessons Learned workshop																				
P&B Output Code	Outcome S3.2: The programmatic reach of the National Societies and the IFRC is expanded.																				
	Output S3.2.1: Resource generation and related accountability models are developed and improved																				
	Activities Planned Month			1	2	3	4	5	6	7	8	9	10	11	12	13	14	15	16	17	18
AP059	Resource mobilisation /generation activities																				

MDR43007 – CENTRAL AMERICA – Hurricanes Eta and Iota

Funding requirements - summary

Area of Intervention

	Needs in CHF
DISASTER RISK REDUCTION	241,755,000
SHELTER	856,015
LIVELIHOODS AND BASIC NEEDS	752,210
HEALTH	179,879
WATER, SANITATION AND HYGIENE	1,802,939
PROTECTION, GENDER AND INCLUSION	10,224
MIGRATION	28,223
STRENGTHEN NATIONAL SOCIETIES	1,116,361
EFFECTIVE INTERNATIONAL DISASTER MANAGEMENT	23,537
INFLUENCE OTHERS AS LEADING STRATEGIC PARTNERS	2,130

TOTAL FUNDING REQUIREMENTS

5,013,270

all amounts in Swiss Francs (CHF)

BUDGET

International Federation of Red Cross and Red Crescent Societies

*all amounts in
Swiss Francs
(CHF)*

EMERGENCY APPEAL

MDR43007 - NICARAGUA HURRICANE ETA & IOTA

22/12/2020

Budget by Resource

Budget Group	Budget
Shelter - Relief	459,000
Shelter - Transitional	0
Construction - Housing	40,000
Construction - Facilities	0
Construction Materials	0
Clothing & Textiles	76,500
Food	500,000
Seeds & Plants	175,000
Water, Sanitation & Hygiene	1,592,632
Medical & First Aid	90,000
Teaching Materials	110,668
Utensils & Tools	204,350
Other Supplies & Services	0
Emergency Response Units	0
Cash Disbursement	0

Relief items, Construction, Supplies	3,248,150
Land & Buildings	0
Vehicles	545,000
Computers & Telecom	275,050
Office & Household Equipment	0
Medical Equipment	0
Other Machinery & Equipment	0
Land, vehicles & equipment	820,050
Storage	0
Distribution & Monitoring	16,020
Transport & Vehicles Costs	155,100
Logistics Services	11,000
Logistics, Transport & Storage	182,120
International Staff	0
National Staff	0
National Society Staff	236,376
Volunteers	139,400
Personnel	375,776
Consultants	0
Professional Fees	0
Consultants & Professional Fees	0
Workshops & Training	2,000
Workshops & Training	2,000
Travel	10,000
Information & Public Relations	7,500
Office Costs	14,400
Communications	32,400
Financial Charges	900
Other General Expenses	0
Shared Office and Services Costs	0
General Expenditure	65,200
Assets Depreciation	0
Depreciation	0
Cash Transfers National Societies	0
Cash Transfers to 3rd Parties	0
Contributions and Transfers	0
DIRECT COSTS	4,693,296
INDIRECT COSTS	305,064
TOTAL BUDGET	4,998,360

Contact Information

Reference documents

- Actualizaciones Operacionales Previas.
- Plan de Acción (PdA)

For further information specifically related to this operation please contact:

Nicaraguan Red Cross:

- Lic. Auner Garcia, General Director, direcciongeneral@umanidad.org.ni
- Virginia Madrigal, National Relief Director, crndireccionsocorros@umanidad.org.ni

In the IFRC regional office for the America:

- Nelson Aly Rodriguez, Head of the Country Cluster Support Team (CCST) in Central America, nelson.alyrodriguez@ifrc.org

- Gonzalo Atxaerandio, Disaster Management Coordinator for Central America and Recovery focal point, gonzalo.atxaerandio@ifrc.org
- Jono Anzalone, Head of the Disaster and Crisis Department; email: jono.anzalone@ifrc.org
- Maria Larios; Planning, Monitoring, Evaluation and Reporting (PMER) Manager; phone: +507 317-3050; email: maria.larios@ifrc.org

In Geneva

- Antoine Belair, Operations Coordination Senior Officer, antoine.belair@ifrc.org

How we work

All IFRC assistance seeks to adhere to the **Code of Conduct** for the International Red Cross and Red Crescent Movement and Non-Governmental Organizations (NGO's) in Disaster Relief and the **Humanitarian Charter and Minimum Standards in Humanitarian Response (Sphere)** in delivering assistance to the most vulnerable. The IFRC's vision is to inspire, **encourage, facilitate and promote at all times all forms of humanitarian activities** by National Societies, with a view to **preventing and alleviating human suffering**, and thereby contributing to the maintenance and promotion of human dignity and peace in the world.

The IFRC's work is guided by Strategy 2020 which puts forward three strategic aims:



Save lives.
protect livelihoods,
and strengthen recovery
from disaster and crises.



Enable **healthy**
and **safe** living.



Promote **social inclusion**
and a culture of
non-violence and **peace**.
