

www.ifrc.org  
Saving lives,  
changing minds.

# Disaster relief emergency fund (DREF) Kyrgyzstan: Extreme winter conditions

 International Federation  
of Red Cross and Red Crescent Societies

**DREF operation n° MDRKG009**  
**GLIDE n° CW-2012-000209-KGZ**  
**22 December 2012**

The International Federation of Red Cross and Red Crescent (IFRC) Disaster Relief Emergency Fund (DREF) is a source of un-earmarked money created by the Federation in 1985 to ensure that immediate financial support is available for Red Cross and Red Crescent emergency response. The DREF is a vital part of the International Federation's disaster response system and increases the ability of National Societies to respond to disasters.

**CHF 172,477 has been allocated from the IFRC's Disaster Relief Emergency Fund (DREF) to support the National Society in delivering immediate assistance to some 1,000 families (approximately 4,000 beneficiaries). Unearmarked funds to repay DREF are encouraged.**

**Summary:** Since December 2012, Kyrgyzstan is experiencing unusually cold winter with heavy snowfalls and high precipitation level. According to the data obtained from the National Hydro-meteorological service, current temperatures are the lowest for last 76 years (since 1936). In the northern part of the country temperatures reached minus 30-35 degree Celsius. The National Hydro-meteorological forecast service predicts freezing cold weather in January 2013 and February 2013.

Due to power cuts, a number of households without access to electricity at one moment differs greatly from hundreds to thousands. There are power and gas cuts every day across the whole country, including Bishkek. Failure of energy sources affecting people's living conditions and livelihoods.



Households without energy sources in the Bishkek city.  
Photo: Kyrgyzstan RC

On December 18, 2012 a state of emergency situation was claimed in Bishkek city.

The Kyrgyz Red Crescent (KRC) has been provided rapid needs assessment. The National Society National Disaster Response Team (NDRT) members visited affected districts conducted rapid assessment, met with population and authorities, including MoES and administrations of the affected districts. Besides that the KRC is distributing warm blankets to the 1000 most affected population with the support of ICRC.

The results of the National Society rapid assessment revealed that in total approximately 1750 households affected and urgently need to be provided with humanitarian aid.

With support of DREF funds the Kyrgyz Red Crescent National Society intends to provide support to a total of 1,000 households (over 4,000 people) most affected population. This figure includes provision of support 259 to elderly people living alone, 685 households with low income and without breadwinner (3,000 people); and establishment of the Red Crescent disaster preparedness stock in Bishkek to support 250 households (1,000 people) with non- food items.

This operation is expected to be implemented over three months, and will therefore be completed by the end of March 2013. A final report will be made available by the end of June 2013.

[<click here for the DREF budget; here for the map of the affected area; and here for contact details>](#)

## The situation

Since the second half of December 2012, Kyrgyzstan is facing unusually cold temperatures. According to the hydro-meteorological services, current temperatures are the lowest for last 76 years (since 1936). By December 21, 2012 the level of precipitation already exceeds the usual level by 17%, which is 41 mm comparing to monthly norm of 35 mm.

As a result of low temperatures and high precipitation level, which led to failure of energy sources and natural gas condensation facilities, Bishkek has faced problems with energy supplies.

The Ministry of Emergency Situations (MoES) reports on lack of funds to repair electric power facilities and transmission lines, lack of fuel contingency stock to clear roads from snowfalls and avalanches and for the forage supply.

Due to power cuts, a number of households without access to electricity at one moment differs greatly from hundreds to thousands. There are power and gas cuts every day across the whole country, including Bishkek.

On December 18, 2012 a status of emergency situation was claimed in Bishkek city. Since December 2012 due to the extreme winter conditions 16 people were died and 50 were injured.

Preliminary weather forecasts for upcoming two months indicate that extremely low temperatures will remain until the end of February 2013.

Even approximate estimation shows that electricity and gas shortages have affected several thousand people in Bishkek, who were not prepared for drastic weather changes. Vulnerable groups of people (homeless, elderly people living alone, low income, multi-children, families with one bread winner and etc.) are the mostly suffered from the situation occurred.

Brief needs assessment conducted by the Kyrgyz Red Crescent National Society and data collected by partners (UN agencies) reveal the necessity of heating materials, blankets, hot food and other materials useful in the given situation.

## Coordination and partnerships

The Kyrgyz Red Crescent National Society is working closely with the Ministry of Emergency Situations of the Kyrgyz Republic. The Kyrgyz Red Crescent National Society is a member of the inter-agency Disaster Response and Coordination Unit (DRCU) and Rapid Emergency Assessment and Coordination Team (REACT) lead by UN OCHA. The National Society is exchanging and sharing information with Partners on a routine basis. Iranian and Turkish Red Crescent Societies were informed about extreme weather conditions and humanitarian consequences and related needs. The National Society is still awaiting a feedback from these two National Societies.

At the moment, MoES is providing hot meals for the affected population. Some city based government agencies have been provided with machines and trucks for clearing snow the affected areas.

The ICRC Delegation in the Kyrgyz Republic has expressed readiness to support the National Society in their response and prepositioning activities. In the ICRC stocks/warehouses there are available blankets which could be provided to the Kyrgyz Red Crescent National Society in case emergency. Blankets are going to be distributed through volunteers of the Red Cross Red Crescent Movement. Moreover, the ICRC is going to provide hot meal for the most affected population such as homeless, people with disabilities, elderly people etc.

Red Crescent Society of Kyrgyzstan is closely coordinating its plans and activities with Red Cross Red Crescent Movement partners. Further coordination meetings will be held to determine support from the ICRC.

National Societies of Turkey and Iran that work closely with the Red Crescent Society of Kyrgyzstan are being kept informed and updated on the actions taken.

## Red Cross and Red Crescent action

The rapid needs assessment was done by 5 NDRT members and 20 volunteers of the National Society on December 19-20, 2012. The assessment is still ongoing, NS headquarters and Bishkek city branch staff is visiting affected districts, meeting with population and authorities, including MoES and administrations of the affected districts. The results of the rapid assessment revealed that elderly lonely people, households with low income and without breadwinner are the most affected and vulnerable in this situation and the most in need of support.

The NS already supports 1,000 most affected households with the support of ICRC by provision of warm and planning to provide hot meals for the homeless people. In coordination with MoES the hot meal will be provided once per day in the evening time as in the lunchtime, meals are provided by the MoES.

## The needs

According to the rapid needs assessment conducted by the NS staff and volunteers, the Kyrgyz Red Crescent has decided to target the most vulnerable 750 families (3,000 people) affected by cutting of energetic supply due to the extreme low temperatures in the Bishkek city.

The selection of the beneficiaries was conducted by the RCSK along the following methods:

- Door-to-door survey by volunteers;
- Coordination with local administration, local government institutions and UN Agencies in order to avoid any potential overlapping or duplication.

The beneficiaries for the food security operation have been selected according to the following criteria:

- Lonely elderly with minimal level of income
- Disabled persons with minimal level of income
- Other categories like single mothers, children without parents/ living with relatives

Families affected by the extreme cold temperatures are in need of blankets, thermal pots to maintain hot water, lighting devices and food.

## The proposed operation

Based on the assessment results and needs the NS proposes to support 1000 most affected and vulnerable households (4000 persons) in Bishkek city districts with food items and non-food items.

The table below lists the proposed items provision for 3,000 most vulnerable people (750 families):

Items	Quantity
Blankets	3,000
Food parcels	750
Thermal pots	750
Lighting rechargeable device	750

Contents of supportive food parcel

Items	Units	Quantity
Sugar	kg	5
Tea	Pack of 40	1
Instant coffee	Pack of 25	1
Quick cooking oatmeal	Pack of 25	1
High energy biscuits	kg	2

Due to the weather forecasts the DREF also includes the provision of contingency stocks for an additional 1,000 people for the period of six months.

Relief distributions (food parcels and non-food items)
<b>Outcome1: The immediate needs of 750 families (3,000 persons) affected by energetic crisis in severe winter conditions are met through the support provided by the Kyrgyzstan Red Crescent.</b>
<b>Outputs (expected results) and activities planned:</b> Provision of supportive food parcels, blankets, lighting devices and thermo pots (for 750 families) affected by affected by cutting of energetic supply due to the extreme low temperatures. Activities planned: <ul style="list-style-type: none"> <li>• Conduct detailed needs assessment</li> <li>• Prepare beneficiary lists</li> <li>• Procure relief items in accordance with IFRC procurement procedures</li> <li>• Transport relief items to the distribution points</li> <li>• Distribute relief supplies and control supply movements from point of dispatch to end user.</li> </ul>

- Monitor and evaluate the relief activities and provide reporting on relief distributions.
- Conduct beneficiary satisfaction survey
- Conduct lessons learned workshop

**Outcome 2: Non-food items contingency stocks for 1,000 people will be procured and pre-positioned in case of deterioration of the humanitarian situation due to the extreme winter condition.**

**Outputs (expected results) and activities planned:** Provision and pre-positioning of additional resources of the Red Crescent disaster preparedness stock in Bishkek to support 250 households

Activities planned:

- Procure relief items according to the IFRC procurement procedures
- Transportation of procured items and their prepositioning in one RC Emergency Response Centre in Bishkek city.
- Monitoring and control of supply movements from the point of dispatch to ERC's.

## Monitoring, Evaluation and Communication

The Kyrgyz Red Crescent has established a reliable reporting system. The projects personnel prepare different types of narrative and financial reports based on the progress achieved during the implementation of the operation. The projects are regularly monitored and evaluated by using inquiries and questionnaires. Beneficiary satisfaction survey will be conducted after distribution of the items to assess if beneficiaries have received the items in a timely and quality manner.

A workshop will be organized on the national level with the participation of the teams involved in the implementation of the disaster response operation to share experiences and lessons learnt during the. Visibility of the work of the volunteers is provided during the operations through publications and regular information to media. Weekly operation updates will be sent to the European Zone Office.

## Contact information

**For further information specifically related to this operation please contact:**

- **Kyrgyzstan Red Crescent:** Jypar Myrzanalieva, Head of DM Department; office phone: +996(312)300190; mobile phone: +996(550)120035; email: [j.myrzanalieva@redcrescent.kg](mailto:j.myrzanalieva@redcrescent.kg)
- **IFRC Zone Office:** Alberto Monguzzi, Disaster Management Coordinator; office phone: +36 1 8884 500; email: [alberto.monguzzi@ifrc.org](mailto:alberto.monguzzi@ifrc.org)
- **IFRC Geneva:** Cristina Estrada, Operations Support, phone: +41.22.730.4260 email: [cristina.estrada@ifrc.org](mailto:cristina.estrada@ifrc.org)



**Click here**

1. Click [here](#) for the DREF operation budget below
2. Click [here](#) to see the map of the affected area
3. Click [here](#) to return to the title page

## How we work

All IFRC assistance seeks to adhere to the Code of Conduct for the International Red Cross and Red Crescent Movement and Non-Governmental Organizations (NGO's) in Disaster Relief and the Humanitarian Charter and Minimum Standards in Disaster Response (Sphere) in delivering assistance to the most vulnerable.

The IFRC's vision is to inspire, encourage, facilitate and promote at all times all forms of humanitarian activities by National Societies, with a view to preventing and alleviating human suffering, and thereby contributing to the maintenance and promotion of human dignity and peace in the world.

[www.ifrc.org](http://www.ifrc.org)

**Saving lives, changing minds.**



The IFRC's work is guided by Strategy 2020 which puts forward three strategic aims:

1. Save lives, protect livelihoods, and strengthen recovery from disaster and crises.
2. Enable healthy and safe living.
3. Promote social inclusion and a culture of non-violence and peace.

# DREF OPERATION

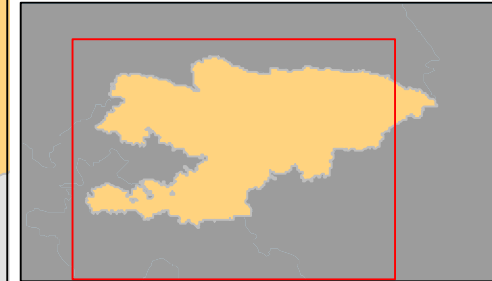
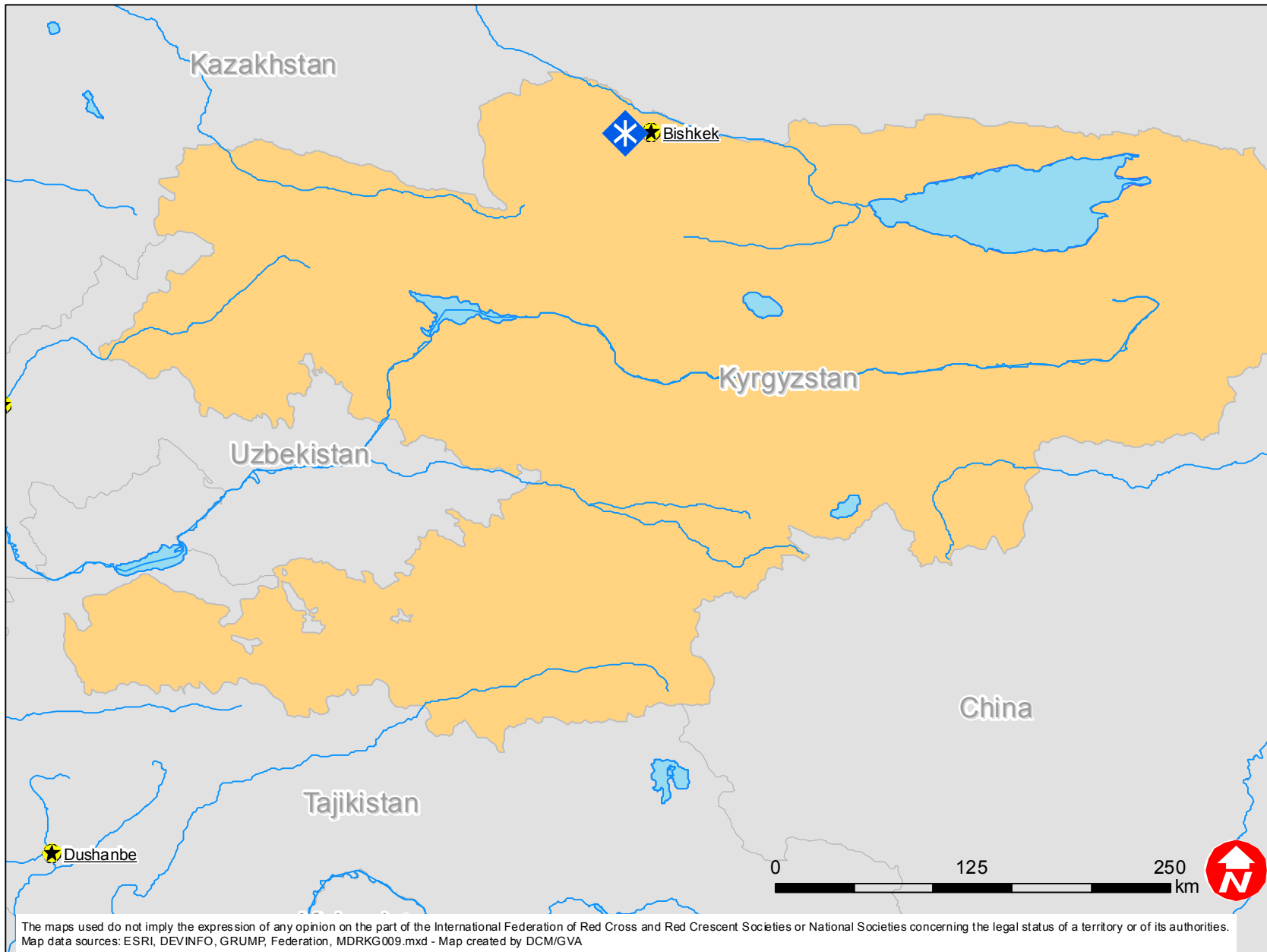
21/12/2012

Kyrgyzstan Extreme Winter Condition

<b>Budget Group</b>	<b>DREF Grant Budget CHF</b>
Shelter - Relief	
Shelter - Transitional	
Construction - Housing	
Construction - Facilities	
Construction - Materials	
Clothing & Textiles	60,000
Food	51,000
Seeds & Plants	
Water, Sanitation & Hygiene	
Medical & First Aid	
Teaching Materials	
Utensils & Tools	25,000
Other Supplies & Services	
Cash Disbursements	
<b>Total RELIEF ITEMS, CONSTRUCTION AND SUPPLIES</b>	<b>136,000</b>
Land & Buildings	
Vehicles	
Computer & Telecom Equipment	
Office/Household Furniture & Equipment	
Medical Equipment	
Other Machinery & Equipment	
<b>Total LAND, VEHICLES AND EQUIPMENT</b>	<b>0</b>
Storage, Warehousing	3,500
Distribution & Monitoring	2,600
Transport & Vehicle Costs	2,400
Logistics Services	
<b>Total LOGISTICS, TRANSPORT AND STORAGE</b>	<b>8,500</b>
International Staff	
National Staff	
National Society Staff	4,000
Volunteers	2,450
<b>Total PERSONNEL</b>	<b>6,450</b>
Consultants	
Professional Fees	
<b>Total CONSULTANTS &amp; PROFESSIONAL FEES</b>	<b>0</b>
Workshops & Training	4,000
<b>Total WORKSHOP &amp; TRAINING</b>	<b>4,000</b>
Travel	5,000
Information & Public Relations	
Office Costs	
Communications	1,500
Financial Charges	
Other General Expenses	500
Shared Office and Services Costs	
<b>Total GENERAL EXPENDITURES</b>	<b>7,000</b>
Partner National Societies	
Other Partners (NGOs, UN, other)	
<b>Total TRANSFER TO PARTNERS</b>	<b>0</b>
Programme and Services Support Recovery	10,527
<b>Total INDIRECT COSTS</b>	<b>10,527</b>
<b>TOTAL BUDGET</b>	<b>172,477</b>



# Kyrgyzstan: Cold wave



 Targetted city