


www.ifrc.org
Saving lives,
changing minds.

Emergency Plan of Action (EPoA)

Zambia: Dam Spillage in Mumbwa

 International Federation
of Red Cross and Red Crescent Societies

DREF Operation n°	MDRZM013	Glide n°:	FF-2020-000240-ZMB
For DREF; Date of issue:	05 January 2021	Expected timeframe:	3 months
		Expected end date:	30 April 2021
Category allocated to the of the disaster or crisis: Yellow			
DREF allocated: CHF 163,761			
Total number of people affected:	3,000 people (500 households)	Number of people to be assisted:	3,000 people (500 households)
Provinces affected:	Central Province	Provinces/Regions targeted:	Mumbwa District
Host National Society(ies) presence (n° of volunteers, staff, branches): Zambia Red Cross Society – (Mumbwa Branch) has 25 volunteers all trained in Basic first Aid and 1 National Response Team member.			
Red Cross Red Crescent Movement partners actively involved in the operation: International Federation of Red Cross and Red Crescent Societies (IFRC), and The Netherlands Red Cross (NLRC)			
Other partner organizations actively involved in the operation: Disaster Management and Mitigation Unit (DMMU), Muslim Community of Zambia, Zambia Air Force			

<Please click [here](#) for the budget and [here](#) for the contacts>

A. Situation analysis

Description of the disaster

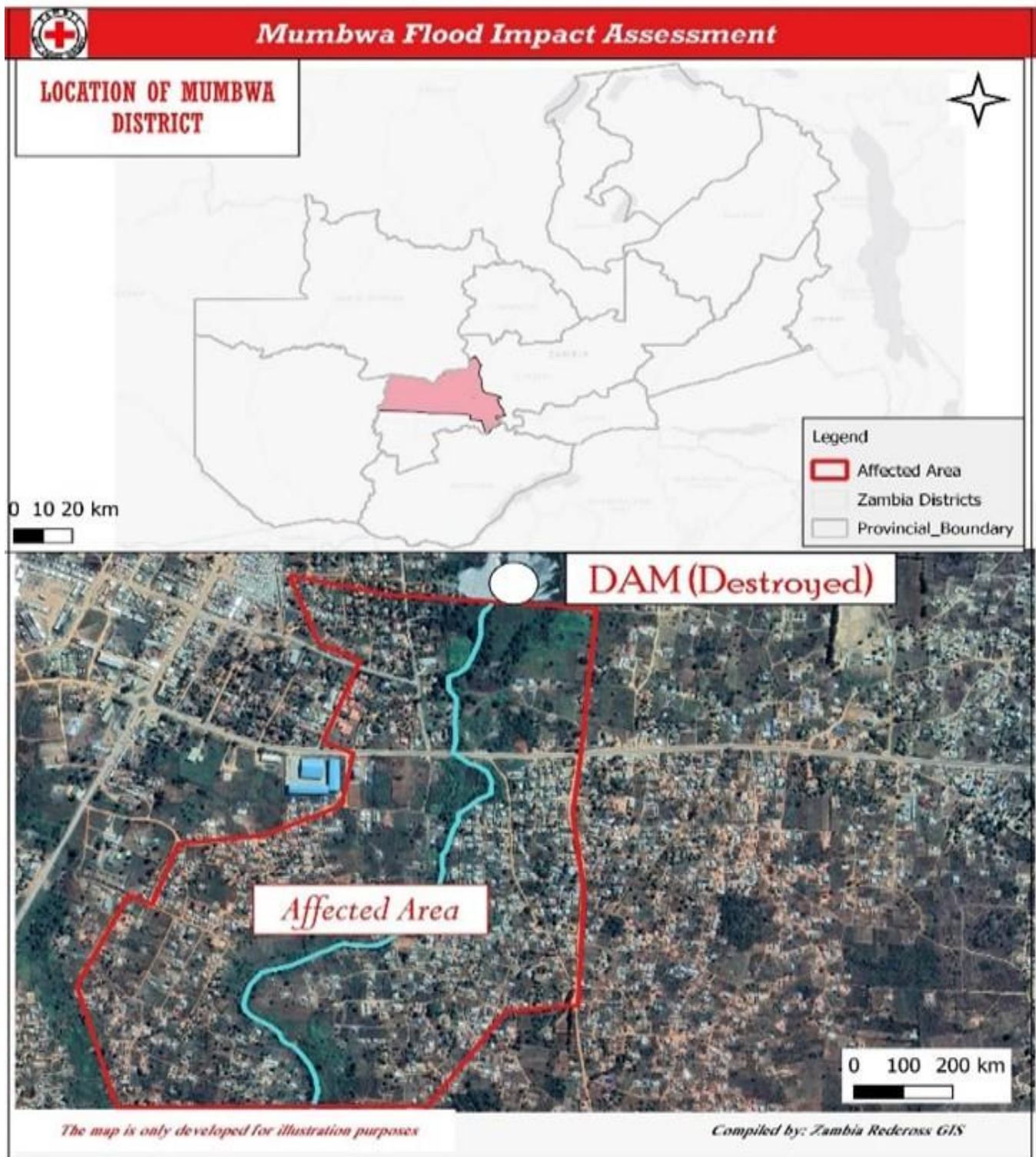
From 22 to 26 December 2020, heavy rainfall leading to severe flooding affected parts of Zambia. The heavy rainfall on the 26 December 2020 resulted in the bursting of Kandesha Dam that led to flooding in Munengo, Kambobe, Katala, and Chiloweni communities of Mapona ward in Mumbwa district of Central province. The flood affected 500 households that need humanitarian assistance, amongst which 261 houses damaged and 169 households displaced.

The affected households are mainly found along the Chibila stream that feeds into the Kafue River. To date, 3 people have been identified as missing of which 2 have now been reported dead. The Disaster Management and Mitigation Unit (DMMU) recorded a total of 169 households that were evacuated to St Edmond's Primary School.



Kandesha Dam after the disaster ©ZRCs

Kandesha dam is the main commercial reservoir for Lukanga Water and Sewerage Company for the partial supply of water to Mumbwa Township. The population of the township is estimated at 19,000 people of which 500 households are affected (3,000 people). The source of the water supply for this community are the seven boreholes which supply 1,000 cubic litres of water to residents.



Mumbwa district and google earth map showing the affected areas. The map shows the location of Mumbwa district and the location of the affected areas which have been affected by the flood. The area mapped in red shows the area that was affected by the flash floods.

The interruption of the supply from the collapsed dam implies that there is a serious shortfall of about 3,000 cubic liters per day to meet the consumption demand for the township. Communities have thus resorted to consuming water that is not safe for consumption from shallow wells that have been contaminated by the flooding. Most of the latrines in the area have collapsed and open defaecation is being practiced by those displaced as well as those households affected. The dam also supports the small-scale farmers for agricultural purposes

besides supplying safe water. Four bridges are completely damaged namely: Kaulweulwe, Chibuluma, Katuta, Chisaka which connect the affected communities to the central business district. However, there are additional four bridges which are partially damaged namely and Nachibila, Munengo, Kapepe, and Lutale which also connect the affected areas to the central business district.

The weather forecast for the next 7 days (2 to 8 January) shows that there is going to be heavy rains in most districts of Zambia including Mumbwa District. The rainfall will pose a threat to the already affected population downstream of Kandessa dam. This may result in more households being affected and needs to the affected population increased. However, shelter, water, and sanitation, and food elements are among the most urgent needs to attend to people affected by the floods and the heavy rains. Zambia Red Cross Society (ZRCS) is coordinating with DMMU in the response efforts and will complement the efforts already done by the Government.

Summary of the current response

Overview of the Host National Society Response Action

To respond to the current situation, the ZRCS has sent a team of staff, National Response Teams (NRT) and volunteers to conduct emergency needs assessments and distribute relief items from their warehouse. The team comprised of 1 staff from HQ, 1 NRT, and 4 Volunteers. The team is working in coordination with the government through Disaster Management and Mitigating Unit (DMMU) and Zambia Muslim Community in carrying out assessments in the affected areas. Meetings are being organised by DMMU in Mumbwa District to coordinate on the response. Zambia Red Cross will remain part of the coordination for the response to this flooding.



An affected head of household receiving relief package from ZRCS staff ©ZRCS

The following is a list of items being distributed and will be replenished through this DREF operation.

DESCRIPTION	QUANTITY	Number per household	NUMBER OF HOUSEHOLDS TO BE REACHED WITH THESE ITEMS
Blankets (China donation)	245	3 /HH	81
Mosquito Nets Double Rectangular	350	3 /HH	116
Kitchen Sets	50	1/HH	50
Sleeping Mats	100	3/HH	33
Boom Soap 250G	500	6/HH	83

Overview of Red Cross Red Crescent Movement in the country

The International Federation of Red Cross and Red Crescent Societies (IFRC) provides technical and financial support to ZRCS through its Southern Africa Country Cluster Support team (SA CCST) based in Pretoria, South Africa. IFRC has a delegate in Zambia who is providing technical support to the NS for the ongoing drought emergency appeal but also support the coordination on various disaster management platforms. IFRC is supporting the NS in health, RCCE, MHPSS, CEA, WASH, and Cash Transfer.

The Netherlands Red Cross (NLRC) has an office within NS Head Office and is the only partner NS in country with the presence of 1 delegate. The partner National Society (pNS) provides technical and financial support to ZRCS.

The main programs NLRC are supporting are WASH, Health, population movement, and disaster response preparedness. In terms of disaster response, NLRC is directly involved in response to man-made disasters (population movement) and natural disasters like the current floods and drought. NLRC is supporting several projects including a community-based health and resilience project in Eastern province, Community based surveillance project in Western province, and the Mantapala refugee settlement. Over the years, the NLRC has supported the NS in its emergency preparedness and response for cholera and most recently the COVID-19. NLRC has also contributed to the drought appeal bilaterally.

For the current response, NLRC has supported NS with donation of assorted items which were from its central warehouse in Lusaka. These items have been distributed to the displaced population in Mumbwa district. This will complement what the Government has already distributed to some affected households.

Currently Zambia Red Cross is working in collaboration with IFRC and Netherlands Red Cross in planning and execution of the response interventions in the affected District.

Overview of other actors' actions in the country

The Disaster Management and Mitigating Unit (DMMU) is the main actor currently coordinating the response to the emergency in Mumbwa with some support from Zambia Muslim Community based in the district and Zambia Red Cross Society. It has planned a joint assessment with organizations on the ground. So far, the following aid has been provided to the affected households for support:

Organization	Support	Number of households reached with these items
DMMU	<ul style="list-style-type: none"> • 200 X 50kg bags of mealie meal • 20 X 2-liter boxes of cooking oil • 3 Meda of Kapenta (dry fish) • 57 Mattresses • 200 blankets • 250 Mosquito Nets • 100 Buckets • Clothes • 100 tents • 100 Kitchen sets • 25kg of Chlorine powder • Hand sanitizer • Additionally, DMMU is water trucking 5000L of water/day to those at the evacuation site. 	1,014 people (169 house households) in the evacuation site.
Zambia Muslim Community	Monetary donation Non-Food Items	Amount of the donation and number of people benefited not specified

Needs analysis, targeting, scenario planning, and risk assessment

From the preliminary assessments carried out so far in Mumbwa District, 500 households in Mumbwa district have been affected because of the bursting of the dam leading to flash flooding. A total of 169 households have been safely confined to an evacuation site set at St. Edmond's School and DMMU has responded and supported the displaced households with shelter materials, food and WASH items. However, a gap remains, and Zambia Red Cross Society intends to complement the support provided by DMMU and Muslim community to ensure that the most vulnerable receive needed support. ZRCS has managed to identify the following immediate needs.

Shelter and household items: Some 169 households have been displaced by the flash floods which damaged their houses. They are now being sheltered in a primary school and although Government and ZRCS have provided them with some relief, this is insufficient and there is need for this support to be complemented through provision of emergency shelter and household items.

Livelihood and Basic needs: The displaced/affected families have their food and crops submerged/destroyed because of the flooding. The affected households have lost all their basic items. Zambia Red Cross intends to support the displaced households, through unconditional cash support of K500/month for 3 months for beneficiaries to meet their basic food needs.

Health: Zambia is prone to cholera, malaria and other public health issues which are exacerbated in floods situations. This means there is a need for sensitization in the current flooding context for the affected communities. In wake of the Covid-19, preventive measures must be followed as ZRCS responds to the flood situation in Mumbwa District to ensure the safety of volunteers and the community they provide relief to, through provision of PPEs such as facemasks, hand sanitizers, soap, gloves to limit the spread of COVID 19 during this intervention. Sensitization on the most recurring health issues need to be done to encourage positive behaviours and avoid a potential disease outbreak as the country battles Covid-19 pandemic. ZRCS will link up health sensitization with WASH activities to be implemented under WASH sector.

Water, Sanitation and Hygiene (WASH): Sanitation conditions are poor because the floods destroyed sanitation facilities in the affected community, as well as at the evacuation centre. The flood waters have also affected some water sources which may result in diarrhoea disease outbreaks such as Cholera and Dysentery. This problem might not only be for the displaced population but even those that have taken shelter in host communities. Open defecation is currently practiced by affected communities due to damaged latrines. Considering that the rainy season has just started, the chances of having a Cholera outbreak is high. ZRCS has mobilized volunteers that will be supporting with hygiene promotion activities. In addition, stagnant waters resulting from the floods may cause a resurgence of Malaria cases in the community. ZRCS will support the dissemination of health and hygiene messages to the affected population to prevent the spread of diarrheal diseases as well as Covid-19.

Protection, Gender and Inclusion (PGI) and Community Engagement and Accountability (CEA): Based on varying reasons such as cultural and religious, some people are left out and do not receive humanitarian assistance because they are either ignored or discriminated upon based on their gender, age or disability, yet they feel the worst effect of any crisis. This operation will design the targeting criteria based on vulnerabilities leveraging on diversity factors among others like age and gender. The intervention will seek to engage the at-risk groups such as the elderly and people living with disabilities so that they gain equitable access to the assistance. Inclusion will also be considered when deciding on distribution points or strategies used in community engagement to ensure accountability. A post distribution assessment will be undertaken a month into implementation to ascertain the effectiveness of community engagement and accountability (CEA) on increasing consideration of gender and inclusion criteria in the emergency response.

In situations such as the emergency presented by flooding, protection risks are exacerbated, particularly related to unaccompanied minors (family separation can occur when people seek spaces to protect their lives, or when evacuations occur), and people with disabilities, the elderly, pregnant and lactating women, etc. for what it is necessary to strengthen inter-institutional articulation mechanisms to guarantee the protection of rights. Non-food items (NFI's) being distributed such as kitchen sets do have cooking sticks and spoons which are used for cooking and eating.

To address the PGI and CEA issues, the operation will ensure that:

- Marginalized have safe access to pit latrines
- Chronically ill have access to health care services
- Elderly have access to safe water, food
- Children have a child-friendly space in the evacuation site
- Complaint and feedback mechanism are established
- Information about who we are, the duration and objectives of our response, who is targeted and why, and how to ask questions and provide feedback will be shared with the community through trusted channels of communication

Targeting

The Zambia Red Cross Society aims at reaching out to 3,000 people (500 households) who have been affected by the flash flood resulting from bursting of the dam. Of these 500 households, 169 displaced families (1,014 people) will receive emergency shelter and livelihood support to complement what was provided by the Government while the overall affected population shall receive WASH support.

The prioritization of communities and households to be reached will be carried out in coordination with the DMMU as a coordinating body to generate synergies and complementarity of humanitarian assistance.

While disaggregated figures are not yet available, the ZRCS, in support of the DMMU, is assessing the affected areas. Once the assessments are concluded, the age and gender figures will be used for the monitoring and reporting of this operation. For the application of cash transfers, ZRCS will target only displaced households to ensure they have the basic means to sustain themselves in the next three months.

Scenario planning

Scenario	Humanitarian consequence	Potential Response
Best case scenario: Mumbwa district does not receive further floods, the current situation remains the same because of no more heavy rainfall to increase water levels. There is an increase in relief support from the government and other organizations. Both local and main markets are accessible with sufficient basic needs. Overall, 500 households are affected.	<ul style="list-style-type: none"> No further consequences as already indicated in the needs analysis. 	ZRCS responds through this DREF operation, to compliment support already provided by the Government and other partners.
Most likely scenario: More rainfall as per the forecast issued by the Meteorological services and more households affected and displaced with increased shelter, WASH, Food, and Health issues for the affected households. More than 500 households are affected.	<ul style="list-style-type: none"> More displaced households due to damages caused to their homes by flood waters Sanitation facilities collapsed and submerged in water Water points submerged in and contaminated exposing communities 	ZRCS continues to respond through this DREF operation. NS also supports Government in advocating for more support from in-country humanitarian partners
Worst-case scenario: Due to excessive rainfall forecast for the 2020/2021 rainy season and alert issued by the Zambia Meteorological Department, Zambia is expecting heavy rain. This gives chance for the Kandesha dam to rise again and affect more people than the current figures, hence increased vulnerability and more needs for the affected population. Other districts will also start experiencing floods. This will result in more short-term, medium-term, and long-term needs.	<ul style="list-style-type: none"> Displaced households increase as more damages caused to their homes by flood waters Increased cases of COVID due to promiscuity in emergency shelters More sanitation facilities collapsed and submerged in water More water points are submerged in and contaminated leading to increased cases of diarrhoea Increased cases of malaria due to standing waters in the community. 	ZRCS reviews this DREF operation based on needs and request a supplementary allocation to reach more people. NS continues supporting Government in advocating for more support from in-country humanitarian partners.

The current DREF operation seeks to respond to scenario 1. However, ZRCS continues to prepare for an eventual scale-up, should the situation get worse.

Operation Risk Assessment

The current DREF operation is exposed to several risks as highlighted below, for which National Society (NS) and Country Cluster Support Team (CCST) have discussed mitigation measures to ensure targeted communities receive the needed support.

1- Continuous rains and flooding

As the rains intensify, most of the affected areas will become inaccessible due to flooded roads and washing away of bridges connecting different areas. A total of 8 bridges have been adversely affected by the flash floods so far. This means difficulties in carrying out assessments as well as provision of support to the affected places. ZRCS will be liaising with the DMMU and other stakeholders where accessibility challenges arise to find better options for reaching out to the affected population.

2- Risks of inflation

Due to the increase in rainfall, markets may become inaccessible and prices may hike in some communities making intervention through cash difficult to implement. The National Society will advocate for support from the relevant stakeholders for price verification on the markets. This advocacy will include maintaining the Cash value to ensure that the basic needs of the population are met.

3- Security Risks

There is a security risk for both the beneficiaries and service providers that may arise due to the high influx of cash in the affected areas, which may also promote an increase in theft. Moreover, security in the area of intervention could present potential risks during travel due to poor road infrastructures, which could delay implementation.

To mitigate such incidents during the operation, all security measures of both the Movement and the Government will be strictly adhered to by all volunteers and staff involved in the operation to reduce risks.

The security management as part of this operation will be based on the RCRC Fundamental Principles and humanitarian values. In addition, the following actions related to security will be implemented:

- These measures include the respect of visibility through the wearing of jackets and regular communication on all the movements.
- Regular briefings will be organized to remind volunteers and staff on their behaviour and Safer Access.
- Coordination will be maintained between the NS and IFRC to ensure that all security measures are respected.

All staff and volunteers must have undergone the Stay Safe security course and abide by the Code of conduct.

4- COVID-19 Pandemic

The increase in the number of COVID 19 cases is a risk to the affected population due to poor living conditions in the evacuation camps. This also poses a significant risk for the volunteers and staff of ZRCS provision relief support to the affected population.

This DREF operation and its operational strategy considers the risks related to the current COVID-19 pandemic and is aligned with the IFRC global emergency appeal that supports National Societies to deliver assistance and support to communities affected or at risk of being affected by the COVID-19 pandemic. According to [Africa CDC](#), as of 03 January 2021, out of a sample of 616,868, a total of 21,230 COVID 19 cases have been registered with 18,942 recoveries and 392 deaths. To date, the following measures have been taken to curb the spread of the disease: mandatory mask wearing, set up of proximity screening sites, set up of treatment centres; risk communication, providing updated information on the COVID-19 situation.

Through this operation, volunteers will be trained on proper handwashing and use of alcohol-based sanitizers to keep safe while carrying out activities to minimize the risk of COVID-19 infection. Face masks will also be provided to volunteers and other Personal Protective Equipment like rubber boots and hand gloves for use during vector control to destroy mosquito breeding sites and clear drainages. COVID 19 messages will be part of the hygiene promotion messages that volunteers will be disseminated in the evacuation centres and volunteers will be supported with PPEs.

National Society responses to COVID-19 are supported through the IFRC [global appeal](#), which is facilitating and supporting them to maintain critical service provision, while adapting to COVID-19. This DREF operation is aligned with and will contribute to the current global strategy and [regional Emergency Plan of Action](#) for COVID-19 developed by the IFRC Africa Regional Office, in coordination with global and regional partners. This means that the NS will ensure, even as it responds to the flash floods, COVID-19 prevention measures are adhered to, in line with regional plan of action and its national COVID-19 country plan. IFRC continues to assess how emergency operations in response to disasters and crisis should adapt to this crisis and provide necessary guidance to its membership on the same. The NS will keep monitoring the situation closely and revise the plan accordingly if needed, taking into consideration the evolving COVID19 situation and the operational risks that might develop, including operational challenges related to access to the affected population, availability of relief items, procurement issues, and movement of NS volunteers and staff as well as international staff. For more information, please consult the [Covid-19 operation page](#) on the IFRC Go platform.

Below table indicates potential impact of the pandemic on this DREF operation and how Zambia Red Cross Society will respond to the situation in the event COVID 19 mitigation measures are made more stringent.

COVID-19 measures	Standard epidemic control measures	Temporary lockdown of society (schools, shops, public functions)	Complete lockdown and restriction of movement during implementation period
Likelihood	High	Moderate	Low
Impact on operation	No impact on ZRCS operation will ensure to adhere to epidemic control measures put in place by government.	The impact will be relatively low on this operation, as Government has opened its borders and the temporary lockdown has been lifted. ZRCS is also assured to be able to implement operation's response activities even in the event of temporary lockdown is imposed.	ZRCS is ensured to be able to carry on its activities as it is part of the presidential taskforce and has been given full access to move during any lockdown. The unlikely event of a complete lockdown is only possible if there is a drastic increase in the number of COVID-19 cases in the country.
Mitigation measures	As the epidemic control measures were already in place before crisis, the operation is designed to adhere to the measures. Trainings will be conducted in small groups with due respect to social distancing measures Distribution and awareness-raising exercises will ensure that physical distancing norms will be adhered to.	Same as under standard epidemic control measures. In addition, some delays might be experienced with procurements of some items. If this happens, a timeframe extension may be requested. ZRCS will distribute COVID-19 PPEs to the staff and volunteers who will be involved in the response The team involved in response will be trained in preparedness and response Use Cash Based intervention which has limited human contact.	Health and hygiene promotion activities will be adjusted in line with any new measures that might come up, while relief through cash and voucher assistance will be provided. ZRCS will distribute COVID-19 PPEs to the staff and volunteers who will be involved in the response ZRCS will distribute COVID-19 PPEs to the staff and volunteers who will be involved in the response Use Cash Based intervention which has limited human contact

B. Operational strategy¹

Overall Operational objective

Respond to immediate needs of 500 HHs in the areas of Shelter, livelihoods and basic needs, health and WASH affected by Floods in Mumbwa District.

Zambia Red Cross is distributing the following Non-Food items from its central warehouse in Lusaka to compliment the DMMU efforts on the ground.

1- Shelter and household items (Target: 1,014 people or 169 households)

Considering that 169 households have been displaced following the flash floods resulting from the dam breakage, NS intends to complement support to ensure these people regain a sense of dignity and privacy as soon as possible. This is all the more urgent given the likely promiscuity they are presently living in at the accommodation camps. Two isolation shelters will also be provided at the camp in case of any upsurge of COVID-19. This will bring the number of emergency shelters to 171 in the overall response, with 71 being provided through this DREF.

The table 3 below summarizes shelter support already made available and table 4 indicates the gap which this DREF will be covering to ensure that all 169 households have emergency shelter and adequate HHIs.

¹ The plan should be prepared by the National Society, with support from the Secretariat technical departments and support services.

Table 3: Summary of items already received by displaced households

Description	Quantity	# per HH	# of HH to be reached	Gap	Total targeted
Provided by Red Cross					
Blankets	245	3 /HH	81	264 blankets for 88 HH	171 HH
Kitchen Sets	50	1/HH	50	119 kitchen sets for 119 HH	169 HH
Sleeping Mats	100	3/HH	33	408 mats for 136 HH	171HH
Provided by Government					
Tents	100	1/HH	100	69 tents for 69 HH	171 HH
Kitchen sets	100	1/HH	100	19 kitchen sets ² for 19 houses	169 HH
Mattresses	57	2/HH	28	282 mattresses for 141 HH	171 HH
Blankets	200	3/HH	66	66 blankets ³ for 24 Households (including 2 isolation centres)	171 HH

The following activities will be implemented:

- Procurement and distribution of materials for emergency shelter to 69 households to complement the 100 tents provided by Government.
- Setup of two isolation centres in evacuation camps to ensure there is space in the event of a Covid 19 upsurge.
- Procurement and distribution of x 14 bamboo poles per household for 71 temporary shelters (households and isolation centres)
- Procurement and distribution of kitchen sets for 69 HHs to complement those provided by Government and replenishing those distributed by ZRCS from its warehouse
- Procurement and distribution of blankets for 103 households plus 2 COVID 19 isolation shelters to complement those provided by Government and replenishing of those distributed from NS warehouse
- Procurement and distribution of 513 sleeping mats for 169 HH and 2 isolation centres – this will include those distributed from ZRCS warehouse
- Training of 25 volunteers in shelter techniques (building back safer)
- Deployment of 25 volunteers for 3 days to support 69 households in erecting their emergency shelters

Table 4: Summary of shelter items to be procured through this DREF:

Items	Quantities
Tarpaulins for emergency shelters	142
Shelter tool kits	71
Bamboo poles	994 (14/HH)
Ropes (30 pieces of 2 m ropes per shelter)	4,260 metres
Blankets for 103 HH and 2 isolation shelters	315 (includes replenishment of 245 from ZRCS warehouse)
Kitchen Sets	69 kitchen sets (includes replenishment of 50 from ZRCS warehouse)
Sleeping Mats	513 (includes replenishment of 100 from ZRCS warehouse)

2- Livelihoods and basic needs (Target: 1,014 people or 169 households)

Following the disaster, Government provided some food items to displaced households including mealie meal (200 bags of 50kg), cooking oil (20 boxes) and some dry fish (15 kg). However, this is not enough as the families have lost their livelihoods and need support to meet their basic needs. As such, ZRCS intends to support these families for 3 months by providing unconditional multipurpose cash to meet their basic food needs or other basic and urgent

² Cumulating with what ZRCS has provided

³ Cumulating with those provided by ZRCS

needs they may have. The cash value is calculated on the minimum expenditure basket (MEB) approved by Zambia Government as detailed below:

Table 5: Minimum food basket value per household

No	Description	Qty	Unit measure	Unit (ZMW)	Cost (ZMW)
1	Maize meal	2	25kg	170	340
2	Cooking oil	1	750mls	25	25
3	Salt	1	100g	10	10
4	Soya chanks	1	5kg	125	125
Total cost					500

Table 6: Cash value transferred per household

Round	Multipurpose	
	Amount	Frequency
1st transfer (Month 1)	500 ZMW	One off transfer
2nd transfer (Month 2)	500 ZMW	
3rd transfer (Month 3)	500 ZMW	
Total	1,500 ZMW	

The following is the proposed intervention under this sector:

- Carry out a market assessment to ensure availability of items on the local market.
- Provision of unconditional cash to 169 households for basic needs such as K500/month for 3 months). The total amount of 1,500 ZMW will be disbursed to targeted households as a one-off cash transfer.
- The NS has signed a Framework Agreement with a financial service provider (FSP) for two years, approved by IFRC LPSCM. The cash will be disbursed to the targeted population using the same FSP. Deployment of 5 volunteers and 1 staff to supervise cash transfer alongside FSP agents. They will also ensure to verify beneficiary lists and assess satisfaction.
- Carry out post-distribution monitoring to verify relevance of assistance and check if the cash received was sufficient for three months, depending on needs of each household.

3- Water, Sanitation and Hygiene (WASH) (Target: 3,000 people or 500 households)

To limit exposure of affected population to water-related diseases such as cholera due to potential consumption of dirty water and prevent the spread of malaria due to the presence of stagnant water, ZRCS intends to conduct a series of health and hygiene promotion activities. This will also include sensitization on the ongoing COVID-19 pandemic. The below has already been distributed by both NS and Government to the affected households:

Table 7: Summary of items already distributed:

Description	Quantity	# per HH	# per HH to be reached	Gap	Total targeted
Mosquito Nets Double Rectangular	600 (350 provided by ZRCS and 250 provided by Government)	3 /HH	200	900 mosquito nets for 300HH	500 HH
Boom Soap 250G	500	6/HH	83	9,000 soap bars for 500 HH	500 HH for 3 months
Buckets (provided by Government)	100 Buckets	2/HH	50	900 buckets for 450 HH	500 HH

The following are proposed interventions under this sector to complement what has already been done:

- Procure and distribute 900 mosquito nets for 300 households plus 6 for two COVID 19 isolation shelters to complement what has been distributed
- Replenishment of 350 mosquito nets distributed from NS warehouse.
- Procure and distribute disposable face masks for total 65 volunteers (2 packs per volunteer) to serve for 3 months

- Procure and distribute washable face masks to 3,000 people (1/person)
- Procure and distribute 9,000 pcs of soap (3/person for 3 months)
- Procure and distribute 1,500 bottles of chlorine (750 ml) to 500 households for 3 months (1 bottle per month). NS will also conduct training of 25 volunteers and community members on water treatment to be cascaded to the community during sensitization. These volunteers and trained community members will conduct demonstration sessions to ensure proper use by communities.
- Procure and distribute 10 foot-operated handwashing devices to be disposed in the emergency shelter setting, where 169 households are currently sheltered.
- Procurement of disposable sanitary towels for Menstrual hygiene for 16% of total population, i.e. 480 women and adolescent girls for 3 months
- Conduct health and hygiene promotion once every week for 3 months (25 volunteers). This will include sensitization on health issues including cholera, malaria and COVID 19, for which volunteers will disseminate information. The volunteers will also use this opportunity to educate communities on hygiene. Volunteers involved in this activity will receive a one-day training.
- Conduct post-distribution monitoring

Community engagement and accountability (CEA)

CEA will be streamlined throughout the intervention process to guarantee maximum and meaningful participation of the affected communities. During assessments, ZRCS will ensure using CEA techniques, to determine the preferred communication channels by communities and preferred feedback mechanism. This will result in the set-up of a communication and complaint/feedback mechanism. Target communities need timely, accurate and relevant information regarding the disaster response (including programme activities and progress) and best communication approaches to engage with different groups. A complaint desk will also be put in place for recipients of distributed items to provide direct feedback on the items received. The complaint desk will also accept questions and complaints from non-beneficiaries i.e., those who were not selected to receive aid items. For the purpose of clarity and for a good flow of information, clear roles and responsibilities will be agreed with representatives, community leaders and committees.

The following activities will be implemented:

- Conduct training for volunteers and members of staff CEA and PGI
- Conduct the assessment to determine the trusted channel of communication
- Collaborate with community representatives to agree on the selection criteria
- Provide essential information about ZRCS activities, selection criteria, how to use the feedback mechanism, as well as on Covid-19 through trusted channels of communication
- Adapt response activities based on feedback received through the feedback mechanism

Operational support services

Human Resources: Overall, ZRCS will deploy a total of 55 volunteers to support this response (25 WASH, 25 Shelter and 5 for livelihoods). To note, ZRCS doesn't have strong presence in this district so the NS will use the opportunity of this operation to recruit new volunteers. In addition, 2 NRTs will be deployed to Mumbwa to support emergency needs assessment and support volunteers in response. NS HQ staff will be supporting implementation and supervising volunteers under the leadership of the Secretary General of the NS. The National Society has a Cash Focal person and livelihood officer who will play a crucial role in supporting the cash-based intervention. A total of 18 staff are trained in CBI level 1 training. The IFRC Operations delegate in Country will provide the technical support as needed.

To note, ZRCS only has about 25 volunteers in this locality as such, there is a need to recruit and train to be able to implement.

Logistics and Supply Chain: All procurement on this operation will be done in line with IFRC and ZRCS procurement procedures. The National Society has a full-time Logistics officer supported by an intern. The NS has a warehouse in Lusaka with a few items which have been distributed and will be replenished using this DREF.

Communication and Visibility: To support volunteers in their mission as well as the visibility of Red Cross actions on the ground, ZRCS through this DREF operation will procure protection and visibility items for 25 volunteers

including Red Cross bibs, raincoats and gumboots. The Communication officer will provide support in promoting visibility for the operation

Planning, Monitoring, Evaluation and Reporting (PMER): IFRC SA CCST will provide ZRCS with necessary PMER support, especially with regards to monitoring and reporting of this DREF operation. Regular field visits by NS HQ and CCST teams will ensure daily/weekly supervision of activities, in the first few weeks of the operation. The assessment planned will allow for any eventual review of the operation strategy, scope or timeframe through an operation update. Two monitoring missions have been budgeted to ensure CCST can follow up activities by deploying the finance, logs, cash or Ops focal points, as needed during implementation.

Further, field staff will provide weekly updates/reports about the ongoing operation to the Disaster Response Manager based at the HQ. ZRCS will be responsible for providing an operational and financial report (2 months after the end of the operation). This way, IFRC SA CCST can consolidate and ensure publishing within 3 months from the end of the operation.

At the end of the operation, a lesson learnt workshop will be organized by ZRCS with IFRC and other stakeholders of this operation, to reflect on implementation. This workshop will allow for informed planning in future operations and implemented by ZRCS, but also will allow the NS to reflect on its disaster readiness status.

Information Management: In collaboration with IM partners' team and IMWG in-country, IFRC IM ARO will work closely with SA CCST PMER, PNS to support and strengthen Zambia RC on floods extent maps, primary data collections/Secondary data review process, 3W data and infographics, analysis, operations dashboards, snapshots, disaggregation of data and tables of beneficiaries and information bulletins.

C. Detailed Operational Plan



Shelter

People targeted: 1,014 people (169 Households)
 Male: 476
 Female: 538
Requirements (CHF): 48,173

P&B Output Code	Shelter Outcome 1: Communities in disaster and crisis affected areas restore and strengthen their safety, well-being and short-term recovery through emergency shelter and settlement solutions	<i># people/households provided with emergency shelter and settlement assistance (Target: 1,014 people or 169 households)</i>															
	Shelter Output 1.1: Short-term shelter and settlement assistance is provided to affected households	- <i># of emergency shelters provided (Target: 69 emergency shelters)</i> - <i># of emergency isolation shelters provided (Target: 2 isolation shelters)</i> - <i># of shelter related HHI procured and distributed (Target: 71 shelter tool kits, 142 tarpaulins, 994 poles, 315 blankets, 513 sleeping mats and 69 kitchen sets)</i>															
	Activities planned Week	1	2	3	4	5	6	7	8	9	10	11	12	13	14	15	16
AP005	Procurement and distribution of 142 tarpaulins for 69 emergency shelters and 2 isolation shelter for COVID 19																
AP005	Procurement and distribution of 994 poles (14/HH for 71 shelters)																
AP005	Procurement and distribution of kitchen sets for 69 HHs to complement those provided by Government and replenishing those distributed by ZRCS from its warehouse																
AP005	Procurement and distribution of 315 blankets for 103 households and 2 isolation shelters for COVID 19 to complement those provided by Government and replenishing of those distributed from NS warehouse																
AP005	Procurement and distribution of 513 sleeping mats including those distributed from ZRCS warehouse																
AP005	Post distribution monitoring																

P&B Output Code	Shelter Output 1.2: Technical support, guidance and awareness raising in safe shelter design and settlement planning and improved building techniques are provided to affected households	<ul style="list-style-type: none"> - # of volunteers providing recipient households with technical support and guidance, appropriate to the type of support they received (25 volunteers) - # households provided with technical support and guidance, appropriate to the type of support they received (Target: 69) - Minimum percentage of volunteers and recipients who acknowledge the usefulness of the technical support provided on safe shelter construction (Target: at least 80%) 															
		Activities planned Week	1	2	3	4	5	6	7	8	9	10	11	12	13	14	15
AP006	Volunteers training in shelter 25 (2 days)																
AP006	Volunteers support- Shelter construction																



Livelihoods and basic needs

People targeted: 1,014 people (169 Households)

Male: 476

Female: 538

Requirements (CHF): 24,169

P&B Output Code	Livelihoods and basic needs Outcome 1: Communities, especially in disaster and crisis affected areas, restore and strengthen their livelihoods	# people/households provided with cash for basic needs (Target: 1,014 people or 169 households)															
		Activities planned Week	1	2	3	4	5	6	7	8	9	10	11	12	13	14	15
	Livelihoods and basic needs Output 1.1: Provide multipurpose Cash Transfer of 1,500 ZMW to 169 flood displaced families in Mumbwa district for 3 months	<ul style="list-style-type: none"> - # of assessments conducted (Target: 1 assessment joint WASH and CASH assessment) - # of beneficiaries receiving cash (Target: 1,014 people) - # of stakeholder meetings conducted (Target: 2 meetings) - # of volunteers involved in cash activities (Target: 5 volunteers) 															
AP081	Inception meetings at National, Provincial and District level supporting DMMU- 3 meetings, refreshments, transport																
AP081	Market and WASH assessments (fuel, perdiems, etc)																
AP081	Community awareness and engagement on CVA and selection criteria																
AP081	Beneficiary Identification and validation process																

AP081	Cash distribution of ZMW 1,500 to 169 beneficiaries for 3 months																	
AP081	Deployment of 5 volunteers and 1 staff to supervise cash transfer alongside financial service provider (FSP) agents. They will also ensure to verify beneficiary lists and assess satisfaction.																	
AP081	Post distribution monitoring																	



Water, sanitation and hygiene

People targeted: 3,000 (500HH)

Male: 1,410

Female: 1,590

Requirements (CHF): 60,276

P&B Output Code	WASH Outcome1: Immediate reduction in risk of waterborne and water related diseases in targeted communities	<i># people/households provided with cash for basic needs (Target: 3,000 people or 500 households)</i>															
	WASH Output 1.1: Continuous assessment of water, sanitation, and hygiene situation is carried out in targeted communities	<ul style="list-style-type: none"> - <i># of sensitisation meetings conducted (Target: 3 meetings)</i> - <i># of chlorine bottles procured and distributed (Target: 1,500 bottles)</i> 															
	Activities planned Week	1	2	3	4	5	6	7	8	9	10	11	12	13	14	15	16
AP026	Training of 25 selected volunteers and community lead members on water treatment																
AP026	Conduct sensitization on water treatment																
AP026	Procurement of 1,500 bottles (750ml) of Chlorine for 500 HHs in 3 months																
P&B Output Code	WASH Output 1.4: Hygiene promotion activities which meet Sphere standards in terms of the identification and use of hygiene items provided to target population	<ul style="list-style-type: none"> - <i># of mosquito nets procured and distributed (Target: 1,256 mosquito nets)</i> - <i># of soap procured and distributed (Target: 9,000 soap bars)</i> - <i># of reusable face mask procured and distributed (Target: 3,000 masks)</i> - <i># of volunteers trained in hygiene promotion and sensitization (Target: 25 volunteers)</i> - <i># of HH reached with door-to-door hygiene promotion campaigns (Target: 12 sessions)</i> - <i># of sanitary towels procured and distributed (Target: 1,440 packs)</i> 															

	Activities planned Week	- # of women and girls receiving sanitary towels (Target: 480 women and girls)															
		1	2	3	4	5	6	7	8	9	10	11	12	13	14	15	16
AP030	Community sensitisation on Malaria prevention and proper use of mosquito nets (Volunteers allowance for 10 vols X 3 days)																
AP030	Procurement of 1,256 mosquito nets (350 to replenish NS warehouse) including 6 mosquito nets for COVID 19 isolation shelters																
AP030	Procurement of disposable face masks for 55 volunteers (overall involved in this response)(2/volunteer to serve for 3 months)																
AP030	Procurement of washable face masks for beneficiaries																
AP030	Procurement of 9,000 multipurpose soaps (3 /pers/month X 3 months)																
AP030	Conduct 1-day training for 25 volunteers on Hygiene Promotions																
AP030	Conduct door to door Hygiene promotion campaigns - 25 volunteer perdiems for 12 sessions																
AP030	Procurement of disposable sanitary towels for Menstrual hygiene for 480 women for 3 months																
AP030	Post distribution monitoring																

Strategies for Implementation

Requirements (CHF): 31,142

P&B Output Code	S1.1: National Society capacity building and organizational development objectives are facilitated to ensure that National Societies have the necessary legal, ethical and financial foundations, systems and structures, competences and capacities to plan and perform	<i># of volunteers trained in RC Principle, roles and responsibilities (Target: 55 volunteers)</i>															
	Output S1.1.4: National Societies have effective and motivated volunteers who are protected	<i># of PPE materials procured and distributed to volunteers (Target: 55 sets)</i>															
	Activities planned Week	1	2	3	4	5	6	7	8	9	10	11	12	13	14	15	16
AP041	Mobilization and orientation of volunteers on the RC principles, roles and responsibilities																
AP041	Visibility items for volunteers (bibs, boots, raincoats, etc)																
P&B	Outcome S2.1: Effective and coordinated international disaster response is ensured	<i># of volunteers trained in CEA/PGI (Target: 55 volunteers)</i>															

Output Code	Output S2.1.3: NS compliance with Principles and Rules for Humanitarian Assistance is improved	<ul style="list-style-type: none"> - # of feedback mechanisms setup (Target: at least 2) - # of monitoring missions by CCST (Target: at least 2) - # of Lessons learnt workshops conducted (Target: 1 LLW) 															
		Activities planned Week	1	2	3	4	5	6	7	8	9	10	11	12	13	14	15
AP084	ZRCS staff and volunteers are trained on CEA/PGI																
AP084	Community feedback systems are established, and feedback acted upon and used to improve the operation																
AP084	Questions on communication channel preferences, information needs and preferences on raising complaints are integrated in to needs assessments and used to inform community engagement strategies to ensure people are kept informed of operational plans and progress and have information to make informed decisions																
AP064	Monitoring by IFRC CCST – 2 field missions (Finance, Ops and/or Logs as needed)																
AP081	Conduct a lesson learnt workshop-																

Funding Requirements

The overall budget requirement for the implementation of this operation is CHF 163,761 as detailed in attached budget.

International Federation of Red Cross and Red Crescent Societies

*all amounts in Swiss
Francs (CHF)*

DREF OPERATION

MDRZM013 - ZAMBIA - DAM SPILLAGE

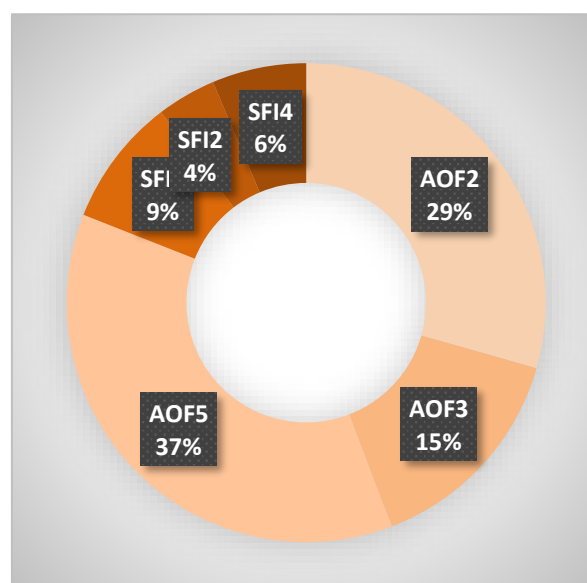
05/01/2021

Budget by Resource

Budget Group	Budget
Shelter - Relief	18,224
Clothing & Textiles	58,360
Water, Sanitation & Hygiene	12,972
Medical & First Aid	5,841
Cash Disbursement	11,732
Relief items, Construction, Supplies	107,128
Distribution & Monitoring	6,675
Transport & Vehicles Costs	4,343
Logistics, Transport & Storage	11,018
National Society Staff	8,233
Volunteers	9,147
Personnel	17,379
Workshops & Training	6,601
Workshops & Training	6,601
Information & Public Relations	1,869
Office Costs	9,392
Communications	111
Financial Charges	267
General Expenditure	11,639
DIRECT COSTS	153,766
INDIRECT COSTS	9,995
TOTAL BUDGET	163,761

Budget by Area of Intervention

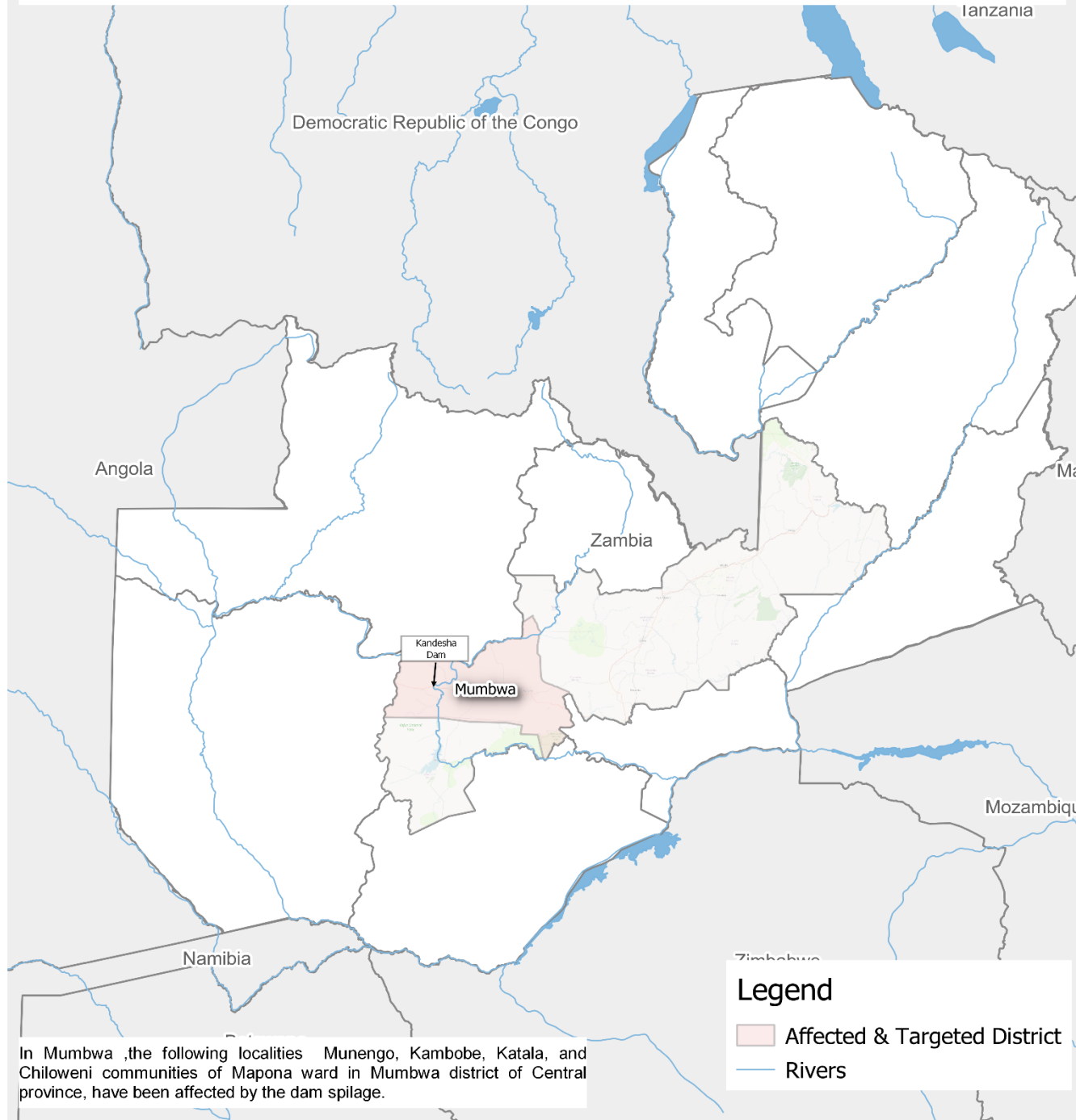
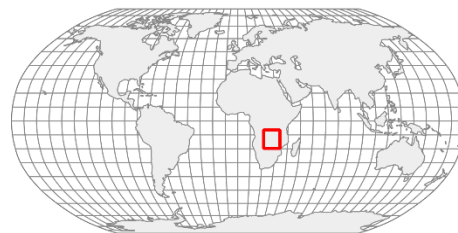
AOF2	Shelter	48,174
AOF3	Livelihoods and Basic Needs	24,169
AOF5	Water, Sanitation and Hygiene	60,276
SFI1	Strengthen National Societies	14,161
SFI2	Effective International Disaster Management	6,564
SFI4	Ensure a strong IFRC	10,417
TOTAL		163,761





Zambia : Mumbwa Dam Spillage

04 January 2021 • MDRZM013 • FF-2020-000240-ZMB



In Mumbwa ,the following localities Munengo, Kambobe, Katala, and Chilweni communities of Mapona ward in Mumbwa district of Central province, have been affected by the dam spillage.

The maps used do not imply the expression of any opinion on the part of the International Federation of the Red Cross and Red Crescent Societies or National Societies concerning the legal status of a territory or of its authorities.
Map data sources: GADM, Zambia RC, IFRC. Map produced by: IFRC Africa Regional Office, Nairobi

Reference documents



Click here for:

- Emergency Plan of Action (EPoA)

For further information, specifically related to this operation please contact:

In the Zambia Red Cross Society

- Cosmas Sakala, Acting Secretary General; Mobile: +2650963724899; Email: cosmas16sakala@gmail.com
- Wina Wina, Acting DM Manager; Mobile: +260977526690; Email: wina.wina@redcrosszm.org

In the IFRC

IFRC Southern Africa Country Cluster

- Dr Michael Charles, Head of Cluster Office; phone: +278 34132988; Email: michael.charles@ifrc.org
- Naemi Heita, CCST Operations Manager; Mobile: +27829264448; Email: naemi.heita@ifrc.org
- Gloria Kunyenga, Operations Delegate Zambia, Email: Gloria.KUNYENGA@ifrc.org

IFRC Regional Office

Adesh Tripathy, Head of DCPRR Unit, Kenya; phone: Mobile +254 731 067489; Email: adesh.tripathy@ifrc.org

In IFRC Geneva

- **Programme and Operations focal point:** Nicolas Boyrie, Operations Coordination, Senior Officer, DCPRR; email: nicolas.boyrie@ifrc.org
- **DREF Compliance and Accountability:** Eszter Matyeka, DREF Senior Officer, DCPRR Unit Geneva; Email: eszter.matyeka@ifrc.org

For IFRC Resource Mobilization and Pledges support:

- Louise Daintrey; head of Partnerships and Resource Development; Email: Louise.DAINTREY@ifrc.org;

For In-Kind donations and Mobilization table support:

- **IFRC Africa Regional Office for Logistics Unit:** Rishi Ramrakha, Head of Africa Regional Logistics Unit, Email: rishi.ramrakha@ifrc.org ; phone: +254 733 888 022

For Performance and Accountability support (planning, monitoring, evaluation and reporting enquiries)

- IFRC Africa Regional Office: Philip Komo Kahuho, PMER Manager, Email: Philip.kahuho@ifrc.org; phone: +254 732 203 081

How we work

All IFRC assistance seeks to adhere to the **Code of Conduct** for the International Red Cross and Red Crescent Movement and Non-Governmental Organizations (NGO's) in Disaster Relief and the **Humanitarian Charter and Minimum Standards in Humanitarian Response (Sphere)** in delivering assistance to the most vulnerable. The IFRC's vision is to inspire, **encourage, facilitate and promote at all times all forms of humanitarian activities** by National Societies, with a view to **preventing and alleviating human suffering**, and thereby contributing to the maintenance and promotion of human dignity and peace in the world.

The IFRC's work is guided by Strategy 2020 which puts forward three strategic aims:



Save lives.
protect livelihoods,
and strengthen recovery
from disaster and crises.



Enable **healthy**
and **safe** living.



Promote social inclusion
and a culture of
non-violence and peace.