

Operation Update Report

Philippines: Floods and Typhoons 2020 (Typhoon Goni)

Emergency appeal n° MDRPH041	GLIDE n° TC-2020-000214-PHL
Operation update n° 2	Timeframe covered by this update: 30/10/2020 – 30/11/2020
Operation start date: 30/10/2020	Operation timeframe: 24 months; end date: 30/11/2022
Funding requirements (CHF): 8.5 million (total requirements for EA is 10.8 million / Federation-wide funding requirement is CHF 16 million)	DREF amount initially allocated: CHF 750,000
N° of people being assisted:	
Red Cross Red Crescent Movement partners currently actively involved in the operation: PRC is working with the International Federation of Red Cross and Red Crescent Societies (IFRC) in this operation. ICRC and eight National Societies are present in the Philippines: American Red Cross, Canadian Red Cross, Finnish Red Cross, German Red Cross, Japanese Red Cross Society, Netherlands Red Cross, Spanish Red Cross and Qatar Red Crescent Society.	
Other partner organizations actively involved in the operation: Government coordination is led by the National Disaster Risk Reduction and Management Council (NDRRMC). Government ministries and agencies involved include the Department of Social Welfare and Development (DSWD), Local Government Units, the Philippine Armed Forces, and the Philippine National Police Force. I/NGOs and UN agencies are monitoring the situation through the Humanitarian Country Team (HCT) supported by OCHA.	

A. SITUATION ANALYSIS

Description of the disaster

On 1 November 2020, Typhoon Goni made landfall as a super typhoon (Category 5) over Catanduanes with maximum sustained winds of 225 kilometers per hour and gusts of up to 280 kilometers per hour. Its the Philippines' nineteenth named storm for year 2020. Typhoon Goni is considered as the strongest landfalling tropical cyclone in world recorded history¹.

At its peak strength on landfall on Catanduanes and Albay, Super Typhoon Goni caused widespread damage to high-risk structures and almost total damage to structures made of light materials in the highly exposed coastal areas. Many roof failures were observed in houses and industrial buildings. Electrical power distribution and communication services were severely disrupted. Water systems were severely damaged. Agriculture and livelihoods were severely affected. In one area, on the slopes, of Mayon Volcano there was a lahar flow that caused the near total destruction of one village.

The last report of National Disaster Risk Reduction and Management Council (NDRRMC) [Sitrep #12](#) as of 11 November 2020 and Department of Social Welfare and Development - Disaster Response Operations Monitoring and Information Center- (DSWD -



Super Typhoon Goni damaged many houses displacing families/people (Photo: PRC).

- Super Typhoon Goni made landfall four times²
1. Bato, Catanduanes - 4:50 am (**super typhoon**)
 2. Tiwi, Albay - 7:20 am (**super typhoon**)
 3. San Narciso, Quezon - 12 pm (typhoon)
 4. Lobo, Batangas - 5:30 pm (typhoon)

¹ <https://yaleclimateconnections.org/2020/11/super-typhoon-goni-slams-into-philippines-as-strongest-landfalling-tropical-cyclone-on-record/>

² <https://www.rappler.com/nation/weather/tropical-storm-rolly-pagasa-forecast-november-1-2020-11pm>

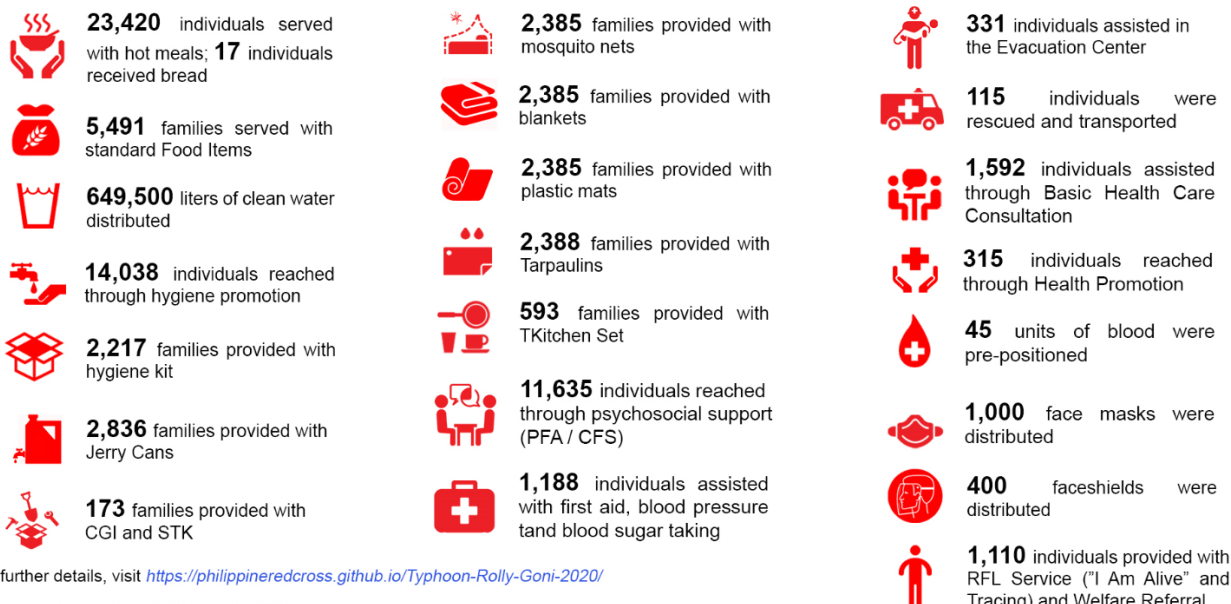
DROMIC) [report #36](#) as of 18 December 2020 are summarized below:

Category	Super Typhoon Goni
Affected	803,572 families or 3,355,995 persons were affected in 5,996 barangays in Regions NCR, II, III, CALABARZON, MIMAROPA, V, VIII, and CAR
Casualties and injured	25 dead, 399 injured, 6 missing.
Houses damaged	There are 398,266 damaged houses; of which, 69,576 are totally damaged and 328,690 are partially damaged
Damage to agriculture	Estimated PHP 5.01 billion worth of damage to crops, livestock, fisheries, and agricultural facilities.
Damage to infrastructure	Estimated PHP 12.8 billion worth of damage to roads, bridges, communication, ports, etc.
Social infrastructure	Health and education infrastructure severely affected. DepEd Region V reported 41% (1,587) schools in Bicol suffered damages worth PHP 6.6 billion.

Summary of current response

Overview of Host National Society

As of 25 December 2020, PRC had been able to carry out the following activities.



For further details, visit <https://philippineredcross.github.io/Typhoon-Rolly-Goni-2020/>

Partners: Australian DFAT and IFRC

* Affected, Displaced, and Damages - NDRRMC as of 11 November 2020

*PRC Actions - TY Rolly Ops Sheet as of 25 November 2020

Created by: E. Manzon / DMS

Overview of Red Cross Red Crescent Movement in country

PRC is leading the overall response operation. PRC works with the IFRC, ICRC and National Societies in-country: American Red Cross, Canadian Red Cross, Finnish Red Cross, German Red Cross, Japanese Red Cross Society, the Netherlands Red Cross, Spanish Red Cross and Qatar Red Crescent Society.

Federation Wide funding situation

The operation has seen multilateral and bilateral supports from partners National Societies and governments. The operation has received multilateral funding from Canadian Red Cross/ Canadian Government, Finnish Red Cross, Japanese Red Cross, New Zealand Government, and Spanish Government. Furthermore, there are multilateral soft pledges from Austrian Red Cross, British Red Cross / Foreign, Commonwealth & Development Office (FCDO), Czech Government, Netherland Red Cross, Swedish Red Cross / Sweden's government agency for development (SIDA) and Swiss Red Cross / Swiss Agency for Development and Cooperation (SDA)

The Netherlands Red Cross, Qatar Red Crescent, American Red Cross, Spanish Red Cross and ICRC have provided various in-kind support to the operation. Singapore Red Cross, Qatari Red Crescent, Korean Embassy and Thai Red Cross are providing bilateral support to the Philippine Red Cross, informed at least in part, by the IFRC Emergency Appeal.

Overview of non-RCRC actors in country

As auxiliary to the public authorities, PRC maintains a strong relationship with government bodies through participation or collaboration with (i) the NDRRMC; (ii) the provincial, municipal and barangay (village) disaster risk reduction and management councils; and (iii) the local government units defined in the Disaster Risk Reduction and Management Act from 2010. PRC participates in NDRRMC meetings and coordinates with the Department of Social Welfare and Development (DSWD), and Department of Health (DOH). PRC is coordinating with the NDRRMC for Pre-Disaster Risk Analysis (PDRA) and response Cluster activation, and through the local chapters' coordination with their Municipal, City, Provincial and Regional DRRMOs especially in Bicol Region. PAGASA and NDRRMC continuously provided updates including on preparedness measures, stocks of household items and other resources; weather forecasts/advisories and gale warnings to regional counterparts and other agencies through formal updates.

Inter-agency coordination

At country level, PRC and IFRC consistently participate in meetings of the Humanitarian Country Team (HCT) held both during disasters and non-emergency times. PRC and IFRC are involved in relevant government-led cluster information sharing, planning, and analysis at all levels while IFRC supports PRC coordination efforts through representation in other relevant clusters as required.

The IFRC lead the IASC Shelter Cluster in support of DSWD, the lead agency in the Government of the Philippines cluster structure. The Philippines country office maintain a full time IASC shelter cluster coordinator in country. A Shelter Cluster Information Manager (IM) surge from Netherlands Red Cross is supporting the operation. The IM Manager is ensuring appropriate information management activities are in place to support the collection, analysis and dissemination of relevant information for the shelter cluster. With the support of the Netherlands Red Cross and REACH the Shelter Cluster are providing maps based on available secondary and primary data. The Shelter Cluster is holding regular meetings with all partners and is in the process of developing a Shelter Cluster Strategy for the response. A 4w dashboard³ has been created to monitor partner's presence and shelter activities. The Shelter Cluster have shared Information, Education and Communication (IEC) materials with partners in local languages and are translating them to other local languages for a more effective approach. The Shelter Cluster [website](#) has been set-up for the response including all the information, meeting minutes and IEC materials.

Needs analysis and scenario planning


Please see [Emergency plan of Action \(EPoA\)](#) for Needs analysis and Operation Risk Assessment.

B. OPERATIONAL STRATEGY

Proposed strategy

Please see [Emergency plan of Action \(EPoA\)](#) for operation strategy.

C. DETAILED OPERATIONAL PLAN

 Shelter People reached: 11,940 Male: 5,970 Female: 5,970		
Outcome 1: Communities in disaster and crisis affected areas restore and strengthen their safety, well-being and longer-term recovery through shelter and settlement solutions		
Indicators:	Target	Actual
Number of affected people's safety, well-being and settlement recovery are restored/strengthen.	25,000	11,940
Output 1.1: Shelter and settlements and basic household items assistance is provided to the affected families.		
Indicators:	Target	Actual

³ <https://www.sheltercluster.org/response/typhoon-goni-2020>

Number of affected families provided with essential household items	5,000	2,385
Number of affected families provided with tarpaulins (emergency shelter)	5,000	2,388
Number of affected families provided with shelter toolkit	3,000	173
Number of families provided with early recovery shelter assistance through conditional cash grants	3,000	to be conducted

Progress towards outcomes

Upon the forecast of the typhoon PRC assisted 331 individuals with pre-emptive evacuation.



People assisted with pre-emptive evacuations (Photo: PRC).

To assist the families that have lost their belongings during the typhoon, 2,385 families were provided with standard household items pack/Non-Food Item (NFI); two tarpaulin, two sleeping mat, two blanket, two mosquito net, one hygiene kit and two jerry cans. Additional 3 families were provided with tarpaulins based on the need.

With the IFRC support, PRC is planning to reach 4,300 families with NFI; 1,500 families in Albay, 1,000 families in Cam Sur and 1,800 families in Catanduanes. Furthermore, additional 1,000 families (500 families in Albay and 500 families in Catanduanes) will be reached with bilateral funding from Department of Foreign Affairs (DFAT) Australia.

To-date total of 173 families were supported with Emergency Shelter Assistance (ESA). Each family is provided with 10 CGI sheets, 1 plain sheet and tools (common wire nails and umbrella nails). ESA will enable families to fix their roofs immediately. The CGI sheets will be used for roofing, the plain sheet will be used for the ridge capping and the nails will be used for fixing.



NFI distribution to the affected families. A recipient upon receiving the items. (Photo: PRC).

PRC is mobilising its preparedness stocks for the relief distributions. IFRC logistics unit has initiate the procurement process to replenish the items distributed.

Local Government Unit (LGU) protocols on the prevention of COVID-19 are being always observed in all activities. PRC provided face shield for all beneficiaries during meetings and distributions. It also ensures no direct contact between PRC volunteers and beneficiaries. Relief distribution is often being done in large open space where items were laid down and beneficiaries can claim the items without contacting anyone.



Loading CGI sheets which to be delivered to affected areas for distribution (Photo: PRC).



Fixing the roof with CGI sheets and tools provided by PRC (Photo: PRC).

Output 1.2: Technical support, guidance and awareness raising in safe shelter design and settlement planning and improved building techniques are provided to affected households

Indicators:	Target	Actual
Number of affected families provided with support on safe shelter awareness.	3,000	2,388

Number of affected families provided with technical support and guidance on safer shelter awareness (as part of early recovery assistance)	3,000	to be conducted
Number of carpenters provided with technical support and guidance on safer shelter awareness appropriate to the type of support they are giving	60	to be conducted
Progress towards outcomes		
Guidance and orientation on the items being distributed were provided alongside its distributions.		



Livelihoods and basic needs

People reached: 27,455

Male: 13,728

Female: 13,727

Outcome 1: Communities, especially in disaster and crisis affected areas, restore and strengthen their livelihoods

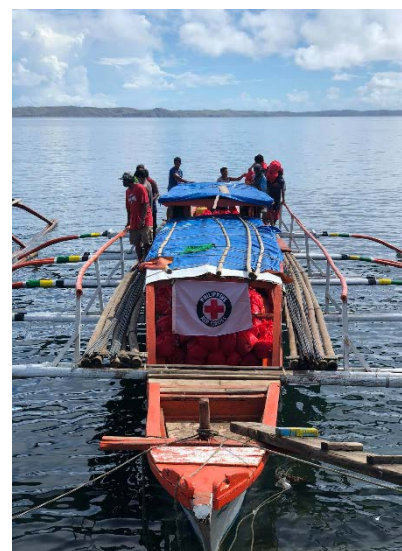
Indicators:	Target	Actual
Number of affected families able to meet their basic needs	5,000	5,491
Number of affected families whose livelihoods are restored to pre-disaster level	4,000	to be conducted

Output 1.2: Basic needs assistance for livelihoods security including food is provided to the most affected communities

Indicators:	Target	Actual
Number of Ready to Eat Food / Hot Meals provided	13,500	23,420
Number of dry food packs provided	3,000	5,491

Progress towards outcomes

Displaced families from different evacuation centres were provided with ready to eat food / hot meals. A total of 23,420 ready to eat hot meals were served. PRC additionally distributed food packages to 5,491 families. A dry food package includes 5kg rice, 5 canned goods, 5 noodles packets and 12 coffee packets. These items are procured locally by the respective chapters.



Transportation of relief items to the affected areas (Photo: PRC).



Distribution of ready to eat food / hot meals via a PRC "hot meals on wheels" truck (Photo: PRC).



Transportation of relief items to the affected areas (Photo: PRC).

Output 1.3: Household livelihoods security is enhanced through food production, increased productivity and post-harvest management (agriculture-based livelihoods)

Indicators:	Target	Actual
Number of affected families reached with awareness raising/training on sustainable livelihoods through CMLP and HLA	4,000	to be conducted
Number of affected families provided with conditional cash grants through HLA	4,000	to be conducted
Number of communities receive support through the CMLP that report improved net income through skill building	10	to be conducted

Progress towards outcomes

PRC has sent teams to conduct rapid disaster assessment and needs analysis (RDANA). Results of the RDANA will determine whether cash and voucher system will be used in this operation.

Output 1.5: Households are provided with unconditional/multipurpose cash grants to address their basic needs

Indicators:	Target	Actual
Number of affected families provided with multipurpose cash grants to address their basic needs	5,000	ongoing

Progress towards outcomes

PRC has sent teams to conduct rapid disaster assessment and needs analysis (RDANA). Based on which PRC has prioritised to provide multipurpose cash grants to 3,500 families with IFRC support; 1,500 in Albay and 2,000 in Cam Sur. Furthermore, 2,600 families in Catanduanes will be supported via bilateral support from American Red Cross. Each family will be provided CHF 70 (PHP 3,500) as one-time transfer via Philpost. Cash distribution is scheduled starting from month of December.

The IM surge is supporting the PRC with beneficiary data cleaning and database management.



Health

People reached: 11,925

Male: 5,963

Female: 5,962

Outcome 1: The immediate risks to the health of affected populations are reduced

Indicators:	Target	Actual
Number of people reached through NS emergency health management programmes	25,000	0

Output 1.1: The health situation and immediate risks are assessed using agreed guidelines

Indicators:	Target	Actual
Initial assessment of health situation carried out (as part of RDANA)	Yes	Yes

Progress towards outcomes

Health needs were assessed during the initial assessment conducted by chapter, based on secondary and historical data.

It is essential that this operation is COVID-19-safe for personnel and affected communities. Considering the current COVID-19 situation in the country, PRC has incorporated COVID-19 guidelines into its response protocols. PRC's staff are always requested to use appropriate personal protective equipment (PPE), swab test prior to going to the field and vehicles will be disinfected regularly. These measures will limit the risks of spreading the virus and protect those who are involved in the operation (staff, volunteers and relief item recipients). As prevention measures, PRC has distributed 1,000 face masks and 400 face shields.

Output 1.8: Minimum initial maternal and neonatal health services provided to target population

Indicators:	Target	Actual
Number of pregnant women that received dignity kits	500	to be identified
Number of pregnant and lactating women that received new-born kits	500	to be identified
Number of health centres provided with screening kits	10	to be identified

Progress towards outcomes

RDANA results has yet to confirm if there is a need to distribute dignity kits and new-born kits. Furthermore, based on the RDANA results, PRC will prioritise the health centres for provision of screening kits.

PRC set-up a Medical Tent (72 sqm) to support the Eastern Bicol Medical Center in Catanduanes. This Medical Tent serves as an Extension Emergency Room/Triage. To-date, total of 305 individuals has been assisted. Furthermore, deployed a mobile health team to provide basic health care / consultation in Catanduanes. Total of 1,567 individuals were reached.



The Medical Tent set-up to support the Eastern Bicol Medical Center in Catanduanes (Photo: PRC).



Volunteer setting-up the tent (Photo: PRC).



A PRC volunteer nurse providing triage at the tent (Photo: PRC).

Outcome 2: The immediate risks to the health of affected populations are reduced through improved access to medical treatment

Indicators:	Target	Actual
# people provided with medical treatment (based on need)	based on need	1,188

Output 2.3: Target population is reached with Search and Rescue activities

Indicators:	Target	Actual
Number of ambulances mobilized to provide immediate transportation services (based on need)	based on need	0
Number of people provided with first aid (based on need)	based on need	1,188
Number of people provided with blood pressure readings (based on need)	based on need	1,188
Number of volunteers trained on basic life support and first aid	50	to be identified
Number of volunteers mobilized to provide first aid and blood pressure reading services in the affected areas	50	to be identified
Number of chapters' first aid kits provided (First Aid Jump Kits)	75	to be identified

Progress towards outcomes

PRC mobilized its staff, volunteers and assets to provide first aid support and search and rescue operations. Total of 1,188 individuals were provided with first aid and blood pressure taking. 1,592 individuals were assisted through basic health care consultations. Furthermore, as search and rescue support 115 individuals were rescued and transported.

The PRC Emergency Response Unit and Caravan equipped with 18 multipurpose vehicles and other assets were deployed to assist search and rescue operations, and debris clearing operation. PRC conducted debris/landslide cleaning activities in 13 barangays of Catanduanes.



Provision of basic health care support evacuees (Photo: PRC)



PRC CARAVAN and Emergency Response Unit team conducting clearing operation (Photo: PRC).

PRC CARAVAN – comprises of following multipurpose vehicles

1. Rescue truck
2. Ambulance 1
3. Ambulance 2
4. Service Vehicle 1 (Hi Lux)
5. Service Vehicle 2 (Land Cruiser)
6. Service Vehicle 3 (Land Cruiser)
7. Humvee
8. Food Truck (QC)
9. Water Tanker 1 - 10,000 Liters (NHQ)
10. Water Tanker 2 -10,000 Liters (NHQ)
11. Water Tanker 3 (Batangas)- 10,000 Liters
12. Water purification unit (LMS) (origin: Albay)
13. Water Treatment unit (origin: Albay)
14. 6-Wheeler Truck
15. 6 X 6 Truck
16. 10-Wheeler Truck 1
17. 10-Wheeler Truck 2
18. Pay Loader

Outcome 4: Transmission of diseases of epidemic potential is reduced		
Indicators:	Target	Actual
Number of people reached with community-based disease prevention, epidemic control and health promotion programming in the affected areas	25,000	to be conducted
Output 4.1: Community-based disease control and health promotion is provided to the target population		
Indicators:	Target	Actual
Number of volunteers trained on Epidemic Control for Volunteers (ECV) Toolkit	300	to be conducted
Number of volunteers mobilized to disseminate epidemic prevention messages	300	to be conducted
Number of volunteers continuously monitor the outbreak situations and report back to the OPCEN for immediate response	300	to be conducted
Progress towards outcomes		
No update as of reporting period.		
Output 4.2: Vector-borne diseases are prevented		
Indicators:	Target	Actual
Number of affected families provided with insecticide treated mosquito nets	5,000	2,385
Progress towards outcomes		
Total of 2,385 families were provided with insecticide treated mosquito nets. These nets are part of the standard package.		
Outcome 6: The psychosocial impacts of the emergency are lessened		
Indicators:	Target	Actual
Number of people provided with direct psychosocial support	1,000	11,635
Output 6.1: Psychosocial support provided to the target population as well as to RCRC volunteers and staff		
Indicators:	Target	Actual
Number of staff receive Training of Trainers on psychosocial support	20	to be conducted
Number of volunteers trained on psychosocial support	30	to be conducted
Progress towards outcomes		
After a disaster people in the affected communities are dealing with psychological distress due to social disruption and impact of the event on the home and family. The PRC, through its well-trained RC 143 volunteers provided Psychosocial Support (PSS) and Psychological First Aid (PFA) to 11,635 individual who had been either stranded or displaced.		




Water, sanitation and hygiene

People reached: 14,180

Male: 7,090

Female: 7,090

Outcome 1: Immediate reduction in risk of waterborne and water related diseases in targeted communities		
Indicators:	Target	Actual
Number of people provided with water, sanitation and hygiene-related services that meet agreed standards according to specific operational and programmatic context	50,000	to be identified
Output 1.1: Continuous assessment of water, sanitation and hygiene situation is carried out in targeted communities		
Indicators:	Target	Actual

Initial assessment of water, sanitation and hygiene situation carried out (as part of RDANA)	15	7 Provinces
Progress towards outcomes		
Assessment Team were deployed in Sorsogon, Albay, Catanduanes Masbate, Camarines Norte, Camarines Sur and Batangas. Initial assessment and RDANA results have identified needs for water supply. There have been water interruptions in the affected areas due to damage to the pipelines and the absence of electricity.		
Output 1.2: Daily access to safe water which meets Sphere and WHO standards in terms of quantity and quality is provided to target population		
Indicators:	Target	Actual
Number of litres of water distributed (according to WHO standards)	2,000,000	649,500
Number of families targeted with jerry cans	5,000	2,836
Progress towards outcomes		
<p>To meet the water needs, PRC deployed five water tankers and a bladder water filtration unit to distribute safe drinking water. A total of 649,500 litres of water has been treated and distributed by PRC. With the support of the IFRC, the PRC is currently mobilizing household items, including jerry cans, to be distributed to affected families. A total of 2,836 jerry cans (10L) were distributed to affected people.</p>		
		
<p><i>Water distribution to 1,000 individuals (15K liters) each in barangay Bolo and barangay Baybay, Tiwi, Albay (Photo: PRC)</i></p>		
Output 1.3: Adequate sanitation which meets Sphere standards in terms of quantity and quality is provided to target population		
Indicators:	Target	Actual
Number of temporary latrines installed	15	to be conducted
Number of temporary bathing and/or shower facilities installed	15	to be conducted
Number of handwashing facilities installed	15	to be conducted
Number of latrines built as part of shelter project	1,000	to be conducted
Number of sanitation facilities / evacuation centres are cleaned via cash for work modality	45	to be conducted
Progress towards outcomes		
No update as of reporting period.		
Output 1.4: Hygiene promotion activities which meet Sphere standards in terms of the identification and use of hygiene items provided to target population		
Indicators:	Target	Actual
Number of people reached by hygiene promotion	25,000	14,038
Progress towards outcomes		
PRC has reached 14,038 individuals with hygiene promotion activities. This has included messaging on handwashing, menstrual hygiene management, solid waste disposal and safe water storage and treatment. Furthermore, PRC has incorporated COVID-19 related messaging in the hygiene promotion activities.		
Output 1.5: Hygiene-related goods which meet Sphere standards and training on how to use those goods is provided to the target population		
Indicators:	Target	Actual
Number of families provided with hygiene kits	5,000	2,217
Progress towards outcomes		
PRC has distributed 2,217 hygiene kits ⁴ to affected people which were dispatched from PRC prepositioned stocks.		

⁴ Each hygiene kit consists of 9 items for a family: body soap – 100g (12 pcs), laundry soap – 200 g (5 pcs), sanitary pads (40 pcs), hand towel (3 pcs), toilet paper (6 pcs), bath towel (2 pcs), toothpaste – 75ml tube (2 pcs), toothbrush (5 pcs) and razor (4 pcs).



Protection, Gender and Inclusion

People reached: 27,455

Male:13,728

Female: 13,727

Outcome 1: Communities identify the needs of the most vulnerable and particularly disadvantaged and marginalised groups, as a result of inequality, discrimination and other non-respect of their human rights and address their distinct needs

Indicators:	Target	Actual
Number of people provided with PGI services	100,000	27,455

Output 1.1: Programmes and operations ensure safe and equitable provision of basic services, considering different needs based on gender and other diversity factors

Indicators:	Target	Actual
Initial assessments focus on key PGI areas is carried out (as part of RDANA)	Yes	Yes
Number of staff and volunteers are trained on IFRC PGI minimum standards in emergencies	60	to be conducted
Sex-age and disability disaggregated data is collected	Yes	Yes

Progress towards outcomes

PRC established Welfare Desks in evacuation centres. These Welfare Desks receives and deals with protection issues and, if necessary, refers cases to the relevant government authorities.

PRC will capture sex and age disaggregated data for the purpose of accountability to communities, to analyse who is directly benefitting and who is not benefitting from services; and to understanding the number and specific vulnerabilities of females to males based on their gender roles and age.

Output 1.2: Emergency response operations prevent and respond to sexual- and gender-based violence and all forms of violence against children.

Indicators:	Target	Actual
Percentage of staff and volunteers sign the code of conduct	100	100
Number of temporary learning centres are established	3	Ongoing
Number of children reached with Dep of Education approved school kits	1,500	To be conducted

Progress towards outcomes

IFRC has zero tolerance for any form of violence against children. Child protection policy is part of the mandatory orientation provided to volunteers mobilized in this operation where all staff and volunteers signed a document that they have read, understood and would abide by the policy. Careful programming across all the sectors and operational areas of IFRC ensured that children are protected from exploitation and abuse regardless of their nationality, culture, ethnicity, gender, religious or political beliefs, socio-economic status, family or criminal background, physical or mental health or any other factors for discrimination. Part of the volunteer and staff recruitment process is to sign a document that they have read, understood and would abide the PRC code of conduct.

Through PRC's welfare services, traumatized individuals receive psychosocial support. Psychosocial support helps individuals cope with fear and anxiety due to the trauma caused by the typhoon, especially for children.



Migration

People reached: 1,110

Male: 555

Female: 555

Outcome 1: Communities support the needs of migrants and their families and those assisting migrants at all stages of migration (origin, transit and destination)

Indicators:	Target	Actual
Number of displaced people reached with information and services provided from welfare desks	15,000	1,110

Output 1.1: Assistance and protection services to migrants and their families are provided and promoted through engagement with local and national authorities as well as in partnership with other relevant organizations.

Indicators:	Target	Actual
Number of affected people have access to basic services	15,000	to be identified

Progress towards outcomes

Displaced population who are staying in different evacuation centres have been supported with psychosocial support, food water and household items. Through the seven welfare desks, displaced population are being provided with PRC services such as: i) restoring family links (RFL); (ii) tracing; (iii) inquiry and communications; (iv) contact of relatives; and (v) referral.

Output 1.3: Family links are restored for people separated from, or without news of, their loved ones as a result of the disaster

Indicators:	Target	Actual
Number of welfare desks providing RFL services in the affected areas.	15	Ongoing

Progress towards outcomes

Part of the standard services provided under the welfare desk set up by PRC are (i) restoring family links; (ii) tracing; and (iii) referral. In this operation, 1,110 individuals were provided with Restoring Family Links (RFL) services (I Am Live), tracing and free calls.



People were provided the facility of "Free Calls" to Restore Family Links (Photo: PRC).



Disaster Risk Reduction

People reached: To be identified

Male:

Female:

Outcome 1: Communities in high risk areas are prepared for and able to respond to disaster

Indicators:	Target	Actual
Number of communities reached through RCRC programmes for DRR and community resilience (excluding public awareness and education campaigns)	6	to be conducted

Output 1.1: Communities take active steps to strengthen their preparedness for timely and effective response to disasters.

Indicators:	Target	Actual
-------------	--------	--------

# of communities DRRM plans updated/reviewed	6	to be conducted
# of Red Cross 143 recruited	24	to be conducted
# of communities provided with PASSA ToT trainings	6	to be conducted
Progress towards outcomes		
No update as of reporting period.		
Outcome 2: Communities in disaster and crisis affected areas adopt climate risk informed and environmentally responsible values and practices		
Indicators:	Target	Actual
# communities adopt climate risk informed and environmentally responsible approaches	6	to be conducted
Output 2.1: Contributions to climate change mitigation are made by implementing green solutions		
Indicators:	Target	Actual
# green response activities are supported	6	to be conducted
Progress towards outcomes		
No update as of reporting period.		
Output 2.2: Community awareness raising programmes on climate changing risks and environmentally responsible practices are conducted in target communities		
Indicators:	Target	Actual
# communities that have implemented activities that contribute to climate change adaptation	6	to be conducted
# people reached by climate change mitigation and environmental sustainability awareness and raising campaigns	20,000	to be conducted
Progress towards outcomes		
No update as of reporting period.		

Strengthen National Society		
Outcome 1: National Society capacity building and organizational development objectives are facilitated to ensure that National Societies have the necessary legal, ethical and financial foundations, systems and structures, competences and capacities to plan and perform.		
Indicators:	Target	Actual
Number of National Society's branches that are well functioning (in the operation)	3	3
Output 1.1.4: National Societies have effective and motivated volunteers who are protected		
Indicators:	Target	Actual
Percentage of volunteers insured	100	to be identified
Progress towards outcomes		
<p>PRC has prioritised three chapters to assist with early-recovery assistance namely, Albay, Cam Sur and Catanduanes.</p> <p>Total of 494 PRC staff and volunteers were activated and mobilized for the operation. All the volunteers involved in the operation are insured under the Membership and Accident Assistance Benefit (MAAB) of PRC.</p>		
Output 1.1.6: National Societies have the necessary corporate infrastructure and systems in place		
Indicators:	Target	Actual
Number of chapter buildings are reconstructed and equipped	5	1

Progress towards outcomes

The roof of the Catanduanes Chapter building was blown-away by the Super Typhoon Goni. Chapter was provided with CGI sheets to repair its roof.



The roof of the Catanduanes Chapters' building was blown-away by the typhoon Goni (Photo: PRC).

International Disaster Response

Outcome 2.1: Effective and coordinated international disaster response is ensured

Indicators:	Target	Actual
Effective and coordinated international disaster response ensured.	Yes	Yes

Output 2.1.1: Effective and respected surge capacity mechanism is maintained

Indicators:	Target	Actual
Number of RDRT member deployed for the operation	4	4

Progress towards outcomes

A PRD surge person was mobilized for a period of one month, since early November 2020. Three more surge positions were mobilized for the operations (for typhoon Goni and typhoon Vamco); Shelter Cluster Information Manager (IM) surge, IM Coordinator and Communications. All the three surge persons arrived in country.

The cost of the surge positions is covered by the respective National Society.

Output 2.1.3: NS compliance with Principles and Rules for Humanitarian Assistance is improved

Indicators:	Target	Actual
Number of methods established to share information with communities about what is happening in the operation based on community preference.	2	Yes
% complaints and feedback received responded to by the NS.	100	to be conducted
% of targeted families satisfied that they have access to information, feedback mechanisms and can influence the programme/response	80	to be conducted

Progress towards outcomes

The IFRC Country Office (CO) is providing support to PRC to ensure accountability and compliance with regards to the DREFs and Appeals procedures. For this operation, this has included the preparation of an Information Bulletin, a imminent DREF, a preliminary emergency appeal, a revised emergency appeal for typhoon Goni, a revised emergency appeal for Philippines: Floods and Typhoons, an emergency plan of action and this operations update are published on the public IFRC Appeals Database.

Information is a vital form of aid, timely, accurate and appropriate information can save lives, livelihoods and resources. Community Engagement and Accountability (CEA) will be integrated into all planned activities to ensure that affected families have access to information on the services being provided by PRC; as well as participate and feedback to PRC. At the time of this publication, PRC welfare desks have been established which allow concerns to be shared with PRC and give an opportunity for community members to receive answers to their questions.

Output 2.1.4: Supply chain and fleet services meet recognized quality and accountability standards		
Indicators:	Target	Actual
Logistics department provides constant support to the National Society's logistics unit for replenishment and other procurements	Yes	Yes
Progress towards outcomes		
<p>Logistics activities aim to efficiently manage the supply chain of relief items, including procurement, fleet, storage and transportation to distribution sites in accordance with the requirements and aligned with standards, processes and procedures of the IFRC. The logistical support for this operation is provided by the strong logistics capacity of the PRC built in recent years, supported by an experienced IFRC CO logistics team including the logistics delegate.</p> <p>Prior to the typhoon landfall IFRC released 1,500 household items from its stocks to the affected areas. PRC planning to distribute NFI to 4,300 families. These items will be replenished during the operation.</p>		
Output 2.1.6: Coordinating role of the IFRC within the international humanitarian system is enhanced		
Indicators:	Target	Actual
A coordinated and strategic response plan according to humanitarian minimum standards is adopted by actors in support of Government	Yes	Yes
Shelter actors working together without duplication of services	Yes	to be identified
% of shelter actors incorporating build back safer (BBS) messaging and technical assistance elements into their shelter programming	100	to be identified
Progress towards outcomes		
<p>The IFRC lead the IASC Shelter Cluster in support of DSWD, the lead agency in the Government of the Philippines cluster structure. The Philippines country office maintain a full time IASC shelter cluster coordinator in country. A 4w dashboard⁵ has been created to monitor partner's presence and shelter activities. The Shelter Cluster have shared Information, Education and Communication (IEC) materials with partners in local languages and are translating them to other local languages for a more effective approach. A shelter strategy is being developed, a regional cluster hub is set-up, a survey shared with partners to understand their Information Management (IM) needs. A Shelter Cluster IM surge to be deployed for a period of two months.</p> <p>As part of the Shelter Cluster, IFRC and PRC participate in Inter-Cluster Coordination Group (ICCG) meetings, and are supporting an inter-agency rapid market assessment for shelter to be conducted in Catanduanes, Region V.</p>		
Outcome 2.2: The complementarity and strengths of the Movement are enhanced		
Indicators:	Target	Actual
Complementarity and strengths of the Movement enhanced	Yes	Yes
Output 2.2.1: In the context of emergencies the IFRC, ICRC and NS enhance their operational reach and effectiveness through new means of coordination.		
Indicators:	Target	Actual
Movement coordination is well-established	Yes	Yes
Progress towards outcomes		
<p>The PRC leads the Movement's overall response for this operation, maintaining close coordination with Movement partners in the country and providing updates. The PRC works with the IFRC, the ICRC and eight National Societies are present in the Philippines: American Red Cross, Canadian Red Cross, Finnish Red Cross, German Red Cross, Japanese Red Cross Society, Netherlands Red Cross, Spanish Red Cross and Qatar Red Crescent Society.</p>		

⁵ <https://www.sheltercluster.org/response/typhoon-goni-2020>

Influence others as leading strategic partner

Outcome 3.1: The IFRC secretariat, together with National Societies uses their unique position to influence decisions at local, national and international levels that affect the most vulnerable.

Indicators:	Target	Actual
IFRC and NS are visible, trusted and effective advocates on humanitarian issues.	Yes	Yes

Output 3.1.1: IFRC and NS are visible, trusted and effective advocates on humanitarian issues

Indicators:	Target	Actual
Number of communications materials produced/published	90	87

Progress towards outcomes

A composite team of PRC and IFRC communications officers is working together to generate further international and national media coverage in high value outlets building on the successful coverage profiling the work of PRC that was achieved when Super Typhoon Goni struck. IFRC Communications published four press releases and a web story for Typhoons Goni to ensure visibility of the Red Cross response efforts. The press releases were quoted in New York Times, The Guardian UK, Reuters and AP, AFP, The Straits Times, SCMP, CNN International, VOA, Deutsche Welle, Washington Post, Bangkok Post, ABC News, and interviews were made by major international media outlets like BBC, Al Jazeera, CNA, TRT World, CNBC TV and Online, Sky TV Global News, Euro News TV. IFRC AV platform (shaRED) including [photographs](#), [web](#), [videos](#). A [testimonial video](#) is developed and disseminated widely.

Output S3.1.2: IFRC produces high-quality research and evaluation that informs advocacy, resource mobilization and programming.

Indicators:	Target	Actual
# of post-distribution visits to affected communities.	2	to be conducted
# of Evaluation is conducted ⁶ .	1	to be conducted

Progress towards outcomes

No update as of reporting period.

Effective, credible and accountable IFRC

Outcome 4.1: The IFRC enhances its effectiveness, credibility and accountability

Indicators:	Target	Actual
Effective performance of staff supported by HR procedures	Yes	Yes

Output 4.1.2: IFRC staff shows good level of engagement and performance

Indicators:	Target	Actual
Percentage compliance with PRC HR procedures	100%	100%

Progress towards outcomes

PRC has been mobilizing NHQ and Chapters existing staff, Red Cross 143 volunteers, Red Cross Action Teams (RCAT134) and National Disaster Response Team's members from other Chapters as required. PRC Human Resources (HR) procedures are being applied for all deployments. In total, 58 PRC personnel have been involved in the response. Please refer to International Disaster Response [Output 1.1.4](#) for information on the human resources mobilized for this operation.

Output 4.1.3: Financial resources are safeguarded; quality financial and administrative support is provided contributing to efficient operations and ensuring effective use of assets; timely quality financial reporting to stakeholders

Indicators:	Target	Actual
-------------	--------	--------

⁶ Including lessons learned workshop

Percentage of financial reporting respecting the IFRC procedures	100%	100%
Progress towards outcomes		
The IFRC CO, through the finance and administration team, provides operational support for review, budget validation, bank CHF 250,000 has been transferred to PRC in-line with the DREF allocation and to support the relief activities.		
Output 4.1.4: Staff security is prioritized in all IFRC activities		
Indicators:	Target	Actual
Staff security is prioritized in all IFRC activities.	Yes	Yes
Progress towards outcomes		
The IFRC security framework is applicable to this operation. For PRC staff and volunteers, the National Society's security framework is applied. Regular and close coordination is maintained with the ICRC in accordance with the existing security framework and Movement's coordination agreement. Regular information sharing is maintained and specific security protocols for each level of security. In the country, all staff members and volunteers are required to take the IFRC online courses: Stay Safe Personal Security, Stay Safe Security Management and Stay Safe Volunteer Security.		

D. Financial Report

Financial report will be issued in the next Operations Update.

Reference documents



Click for:

- [Information Bulletin](#)
- [Imminent DREF Operation](#)
- [Emergency Appeal](#)

For further information, specifically related to this operation please contact:

In Philippine Red Cross

- Elizabeth Zavalla, secretary general; phone: +63 2 790 2300; email: elizabeth.zavalla@redcross.org
- Leonardo Ebajo, director for disaster management services; email: leonardo.ebajo@redcross.org.ph

In IFRC Philippines Country Office

- Robert Kaufman, head of country office; phone: +63 998 585 0794, email: robert.kaufman@ifrc.org
- Patrick Elliott, operations and programme manager; phone: +63 998 961 2140; email: patrick.elliott@ifrc.org
- Radhika Fernando, interim operations manager; phone: +63 998 960 6284; email: radhika.fernado@ifrc.org

In IFRC Regional Office for Asia Pacific, Kuala Lumpur

- Alexander Matheou, regional director; email: alexander.matheou@ifrc.org
- Gwendolyn Pang, deputy regional director; email: Gwendolyn.pang@ifrc.org
- Necephor Mghendi, head of DCC unit; email: necephor.mghendi@ifrc.org
- Nur Hayati Ahmad, operations coordinator; email: OpsCoord.SouthEastAsia@ifrc.org
- Siokkun Jang, logistics manager, regional logistics unit; email: siokkun.jang@ifrc.org
- Antony Balmain, regional communications manager; email: antony.balmain@ifrc.org

In IFRC Geneva

- Christina Duschl, senior officer, operations coordination; email: christina.duschl@ifrc.org
- Karla Morizzo, senior DREF officer; email: karla.morizzo@ifrc.org
- Eszter Matyeka, senior officer, DREF; email: eszter.matyeka@ifrc.org

For IFRC Resource Mobilization and Pledges support

- **In IFRC Asia Pacific Regional Office:** Alice Ho, partnership in emergencies coordinator; email: partnershipsEA.AP@ifrc.org

For Performance and Accountability support (planning, monitoring, evaluation and reporting enquiries)

- **In IFRC Asia Pacific Regional Office:** Siew Hui Liew, PMER manager; email: siewhui.liew@ifrc.org

How we work

All IFRC assistance seeks to adhere to the **Code of Conduct** for the International Red Cross and Red Crescent Movement and Non-Governmental Organizations (NGO's) in Disaster Relief and the **Humanitarian Charter and Minimum Standards in Humanitarian Response (Sphere)** in delivering assistance to the most vulnerable. The IFRC's vision is to inspire, **encourage, facilitate and promote at all times all forms of humanitarian activities** by National Societies, with a view to **preventing and alleviating human suffering**, and thereby contributing to the maintenance and promotion of human dignity and peace in the world.

The IFRC's work is guided by Strategy 2020 which puts forward three strategic aims:



Save lives,
protect livelihoods,
and strengthen recovery
from disaster and crises.



Enable **healthy**
and **safe** living.



Promote social inclusion
and a culture of
non-violence and **peace.**