

www.ifrc.org
Saving lives,
changing minds.

Revised Emergency Appeal Preliminary Final Report

Turkey: Van Earthquake

 International Federation
of Red Cross and Red Crescent Societies

Preliminary Final Report

Emergency appeal n° MDRTR002

GLIDE n° EQ-2011-000162-TUR

8th February 2013

Period covered by this Preliminary Final Report: 26 October 2011 to 14 November 2012

Appeal target: CHF 9,402,445

Appeal coverage: Up to 31st January 2013 the level of the appeal coverage has reached 84 per cent through cash and in-kind contributions.

[<click here to go directly to the financial report or here to view the contact details>](#)

Appeal history:

- This **Emergency Appeal** was launched on a preliminary basis on 26th October 2011 for CHF 10,421,025 for the period of nine months to assist 10,000 households (50,000 beneficiaries).
- The **Revised Emergency Appeal** was launched on 16th November 2011 reflecting the changing needs and complementing the efforts of the Turkish Red Crescent Society after the earthquakes of 9th November 2011. The revised emergency appeal is supporting the Turkish Red Crescent (TRC) to assist 10,000 households (60,000 beneficiaries) for 12 months with transitional shelter.
- **Operations Updates no. 1, 2, 3, 4** and **5** were issued on 1st, 4th, 10th November 2011, 9th January and 29th February 2012.
- **A 6-month Summary Update** was published on 5th June 2012.



Celebibag container camp in Ercis, in the affected area, was sheltering 1,795 people. Photo: Turkish Red Crescent

The Federation issues a Preliminary Final Report on the Van Earthquake Emergency Appeal. Preliminary status of the report is explained by pending financial report due from the Turkish Red Crescent on the outstanding working advance. The final balance of the operation/budget expenses is expected to be CHF 50,908.

The International Federation seeks agreement of its donors to use this balance to support capacity building in core areas of disaster management planning, organizational and community preparedness as well as disaster risk reduction.

Partners/Donors who have any questions in regards to this balance are kindly requested to contact the Federation's Europe zone office within 30 days of publication of this final report. After this date the reallocation will be processed as indicated.

Summary:

In October-November 2011, two earthquakes and more than 10,000 aftershocks struck the Van region in the eastern part of Turkey. Buildings and infrastructure were heavily damaged in the cities of Van and Ercis and their surrounding area. 644 people lost their lives. 252 were rescued from the debris.

Turkish Red Crescent responded immediately to the disaster through the deployment of its disaster response teams. Dispatching of food and non-food relief items including tents, blankets and sleeping bags started within two hours after the disaster had happened. The International Federation of the Red Cross and Red Crescent Societies (IFRC), on behalf of the Turkish Red Crescent, launched its preliminary emergency appeal on 26th October 2011 to contribute to the response efforts of the Turkish National Society by mobilising international in-kind and cash contributions to meet the needs of people affected by the earthquakes.

In the field, the emergency assistance operation was coordinated by the Turkish Prime Ministry Disaster and Emergency Management Presidency (AFAD). It was responsible for all activities related to the delivery and distribution of relief items and the provision of emergency and transitional shelter to the affected population. The Turkish Red Crescent was directly involved in mobilising national and international relief assistance and participated in the assessment of emergency needs and distribution of relief supplies, as well as in providing briefings to the non governmental organisations which were active during the emergency phase. The distribution plans were established by the crisis centres, under direct guidance from the AFAD.

During the emergency phase of the operation, the Turkish Red Crescent dispatched blankets, sleeping bags and sheltering units (tents and Mevlana houses¹) to meet the immediate needs of the population and to provide them with temporary accommodation. The Turkish Red Crescent also provided cooked meals in the camps and adjoining areas in Van province and Erciş district. In total, 3,410,195 portions of cooked meals were distributed since the beginning of the operation. As of 01.03.2012 this activity was terminated. At the same time Turkish Red Crescent provided psychosocial support to the affected people.

Based on the detailed need assessments and the mid- and long-term plans of the government authorities, the Turkish Red Crescent decided to provide 2,000 container houses for the most vulnerable people in the district of Erciş, the epicentre of the quake. The needs for the mid-term were identified in close cooperation with other actors in the operation (most notably the Turkish Government) and reflected the developing situation, taking into consideration harsh winter conditions posing a very real threat to the families left homeless as the result of the two earthquakes.

In November 2011, the International Federation revised its emergency appeal to reflect the transition of the Turkish Red Crescent emergency response into the rehabilitation phase. The provision of transitional shelter to 2,000 homeless families thus became the principal goal of this phase of the operation. On 17 January 2012 the International Federation and the Turkish Red Crescent signed a Memorandum of Understanding, which defined the general principles of the implementation of the Turkish Red Crescent Container/Living houses project in Van Province.

Out of those 2,000 container houses the Federation supported the procurement of 500 container houses, and another 1,500 were financed by other national and international donors. By the end of January 2012, all 2,000 container houses were installed and furnished for more than 10,100 beneficiaries. Within the scope of long term recovery programmes, the plan to shift this population from the container houses into newly built houses by the end of 2012 was foreseen. As of November 2012, 1,500 people were still residing in the container houses as the reconstruction of their homes was still being finalized.

Both before and after the appeal, Partner National Societies (PNS) showed substantial attention and interest in supporting the humanitarian relief operation for the Van earthquakes. Bilaterally and through the International Federation, more than 20 PNSs made cash and in-kind contributions in response to the Federation appeal. Other contributions were received from: the Australian, French, Norwegian, Netherlands, New Zealand, Polish, Swedish Governments, OFDA, OPEC/OFID, USAID, VERF WHO and Western Union. The list of donor national societies and other donors can be found on the following link: <http://www.ifrc.org/docs/appeals/Active/MDRTR002.pdf>

¹ Mevlana houses are a type of prefabricated houses, their size is smaller than a container house, and they have one living room plus facilities.

The situation

A total of 644 people lost their lives, with 2,500 injured and hospitalised. Altogether 650,000 people were affected by the earthquakes that hit Eastern Turkey on 23rd October 2011 and 9th November 2011. More than 10,000 aftershocks were registered.

A technical committee of 20 officials from the governmental agencies and 200 technical staff from different provinces conducted damage assessment: there were 50,599 buildings severely damaged and defined as uninhabitable. 87,591 buildings were slightly damaged but usable for accommodation.

As a result of the structural damage a large number of families have been forced to stay in temporary shelters. In addition, due to the freezing temperatures and snowfall in winter period, hypothermia and respiratory tract infections were of serious concerns. Because of the very severe winter conditions and an absolute priority to protect that affected population's health it was decided to concentrate on transitional shelter solutions.

By the spring 2012, all tent camps were closed and replaced by the container house camps which have had contemporary infrastructures and facilities. Based on the data released by Van Governorate, 29,486 containers had been delivered from different parts of Turkey to Van Province. 24,014 containers were set up in 31 locations of Van province to accommodate 147,319 persons. 27,751 people were settled in 5,472 containers at 9 sites in the centre of Erciş District.

At the beginning of March 2012, the number of people returning back to their homes from other cities where they had been provided temporary accommodation by the government increased substantially. Most of the people went back to their own houses which were certified by the government as "slightly damaged". The education system was fully functioning and the local economy was stimulated in parallel to people heading back to their homeland. Dependency on external assistance provided by the government and non-governmental organizations started to decrease.

The reconstruction activities in the affected areas started in November 2011, almost immediately after the earthquakes. At the edge of the first anniversary of the quake 15,341 houses were delivered to the entitled beneficiaries in Van Province and Erciş District. The additional 2,148 housing units will be delivered soon.

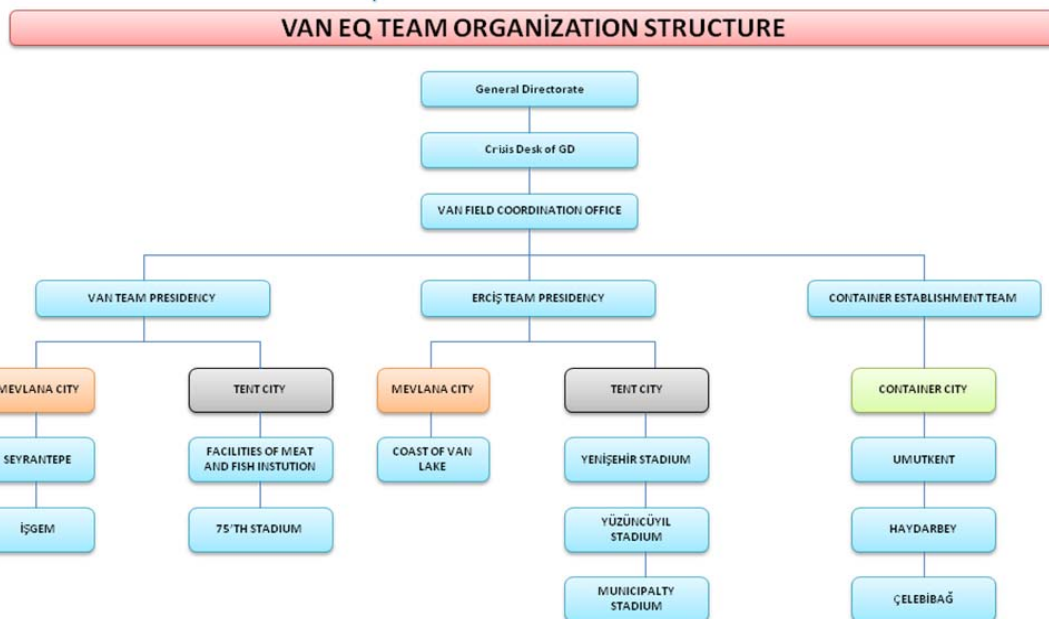
Both before and after the Federation appeal was launched, partner national societies (PNSs) expressed solidarity with the affected population and actively supported the humanitarian relief operation following the Van earthquakes. The list of donor national societies and other donors can be found on the following link: <http://www.ifrc.org/docs/appeals/Active/MDRTR002.pdf>

Red Cross and Red Crescent action

At the beginning of the operation TRC jointly with local community leaders, public agencies and volunteers conducted detailed needs assessment to ensure that the operation was addressing the most urgent needs of the affected people. Based on the needs assessment, items to be distributed were identified and included in the operational plan.

The total number 986 of Turkish Red Crescent staff was involved in the operation (including volunteers, psycho-social support staff, community staff, operation based staff) 1,183 vehicles (including rented vehicles and trucks) and 78 airplanes were engaged in the logistics aspects of the relief and rehabilitation operation.

The chart below explains the organisational structure of the operation, that Field teams were established in each of the affected areas, and one additional team was in charge for establishing the container camps. In each of the camps (tent and container) TRC staff was responsible for coordinating the activities with the local governorates and AFAD representatives.



Food distribution

During the period between 28.10.2011 and 29.02.2012, the TRC distributed cooked meals to the affected people in the tent camps and other locations where the affected population found refuge. The total number of distributed meals was 3,410,195. This activity was terminated on 1st March 2012, because the people had moved to the container locations/camps where they had facilities to prepare their own meals.

From the beginning of the operation TRC ensured the distribution of bread both through its own bread production facilities and through the procurement of bread products from local companies. This activity was terminated by the 8th December 2011. The total number of loaves of bread distributed was 3,183,538.

During the onset of the winter, the TRC provided food parcels to the affected people in Van and Erciş and the surrounding villages: 35,412 families received these parcels..

TRC distributed 21,496 kitchen sets to 2,549 families to the earthquakes affected areas. Summary of the relief items distribution information can be found in the [Annex](#) of the Preliminary Final Report.



Distribution of kitchen sets to the village people in the affected area. Photo: Turkish Red Crescent

Psychosocial support activities

To address the psychosocial support needs of traumatized people, the TRC cooperated with the foundations - members of "The Union of Psychosocial Services in Disasters". The following services were provided:

To children: Kindergarten, various forms of training, social activities (including birthday parties, theatre plays)

To adults: Psychotherapeutic intervention, psychiatric evaluation and treatment, group discussions, short-time group psychotherapy, studies focused on psycho-education, sharing sessions, social care

To disaster response staff: Diffusion sessions.

17,640 persons received various types of the psychological support assistance from the Turkish Red Crescent.

In the framework of the “toy project” organised by TRC with the support of private donations and local foundation “Foundation of Mother and Child Education” toys and other gifts were given to children in the affected area.

Blood donation services

Right after the earthquake, given the high number of injured people, the TRC gave priority the voluntary blood donations. Closed coordination was ensured with 27 hospitals in the region to meet the needs of stocks for blood products after the earthquakes. Therefore the critical stock level in hospitals was supported by TRC through the delivery of different blood products. (1,849 erythrocyte suspension units, 646 units of fresh frozen plasma, 59 platelet units were delivered to the affected area).

Achievements against outcomes

Relief distributions (food and basic non-food items)

Outcome: 10,000 vulnerable families residing in temporary accommodation will have received urgent relief items (blankets, sleeping bags)	
Outputs (expected results)	Activities planned
Families supported with basic NFIs (blankets and sleeping bags)	<ul style="list-style-type: none"> • Conduct detailed emergency needs and capacity assessments. • Develop beneficiary targeting strategy and registration system to deliver intended assistance. • Distribute relief supplies and control supply movements from point of dispatch to end user. • Develop an exit strategy. • Monitor and evaluate the relief activities and provide reporting on relief distributions.

Impact: By the end of April 2012, more than 26,000 blankets and 17,122 sleeping bags were distributed to the affected area from the multilateral contributions received through this emergency appeal. RCRC Movement members contributed on a bilateral basis another 39,500 blankets.

The total number of items distributed through bilateral and multilateral contributions has been the following:

- 213,390 blankets
- 23,612 sleeping bags
- 2,660 mattresses
- 17,311 packages of food and clothing.

Emergency shelter

Outcome: Ensure that the most vulnerable families have a healthy, safe and dignified shelter solution to preserve their physical and mental well-being and prevent the further deterioration of the humanitarian situation.	
Outputs (expected results)	Activities planned
10,000 families provided with emergency shelter materials (winterized tents).	<ul style="list-style-type: none"> • Conduct rapid emergency needs and capacity assessments. • Develop a community and beneficiary targeting strategy in coordination with local authorities and institutions. • Assess the extent of the shelter needs and preferred shelter solutions, employing local suppliers when possible. • Provide appropriate emergency and transitional shelter solutions in coordination with local and regional authorities, universities, professional associations and the affected population. • Develop awareness-raising activities on safe shelter and Disaster Risk Reduction (DRR) in coordination with TRCs and local authorities. • The mobilization (including transport and distribution) of 10,000

	<p>family tents through in-kind donations, local/ international procurement as well as from TRCS stocks</p> <ul style="list-style-type: none"> • Logistics technical support following International Federation • standard operating procedures for TRCS tracking, documentation and distribution (1,000 – 2000 tents per day) • Monitoring
--	--

Impact: Emergency shelter distribution including family tents and Mevlana houses (Mevlana houses are prefabricated emergency/transitional shelters that are made and pre-positioned by the TRC) consisted of the following:

- 53,535 (from TRC stocks and donations) tents
- 3,794 (from TRC stocks) Melvana houses
- 286,645 beneficiaries of emergency shelter

The Turkish Red Crescent has established three tent camps and one Mevlana camp in the district of Erciş, two Mevlana houses camps and two tent camps in Van Province. As of the end of March 2012, the camps in the district of Erciş were closed, two Mevlana houses camps in Van Province were closed by 18th March, 2012. The families were encouraged and decided to go back to their own homes which were certified as “slightly damaged”. These families were allowed taking the Mevlana houses for their own use. Some of the families whose houses were totally destroyed were entitled by the government to keep the containers.

Since all the tent camps in Van Province and other affected districts were closed and most of the people returned back to their homes or settled in the containers, the Turkish Red Crescent decided to collect the distributed tents to be used for future disasters. Within the scope of this activity, agreements were concluded with local private laundry companies for pre-cleaning, washing, drying and repacking of the tents collected from the field.

Since 15th January 2012, 21,932 tents have been collected, (out of that 17,385 are not in a condition to be further distributed but spare parts of the tents can be used for further tent production, 614 tents were handed over to the regional directorates and 3,933 were sent for repairs) renewed and sent back to disaster response centres to replenish their stocks.

The contributions received for the Emergency Appeal were also used for the replenishment of materials that can be used for tent production as Turkey is prone to disasters especially earthquakes and TRC is obliged to keep at least 10,000 tents in its emergency stocks. The purchased materials are mainly different types of canvas that were used by the Turkish Red Crescent’s tent production factory to produce special tents, which are not necessarily available in the market.



Tents are collected, cleaned, repaired and repacked for stock replenishment. Photo: Turkish Red Crescent

Transitional shelter	
Outcome: Improved living condition of 1,100 families (6,600 individuals) in transitional shelter through provision of prefabricated houses of agreed standards.	
Outputs (expected results)	Activities planned
1,100 families provided with transitional shelter (prefabricated houses).	<ul style="list-style-type: none"> • Conduct rapid emergency needs and capacity assessments. • Develop a community and beneficiary targeting strategy in coordination with local authorities and institutions.

	<ul style="list-style-type: none"> • Procurement for Transitional Shelter Units (prefab units) according to IFRC procurement procedures and standards • Distribution of transitional shelter units
--	--

Impact: To respond to the harsh winter conditions and to address the identified needs of the affected population, the revised emergency appeal has been focusing on the provision of transitional shelter to 2,000 families.

The Turkish Red Crescent planned to procure 2,000 container houses. 1,100 container houses was planned to be purchased with the support of the International Federation. Later the planned number was reduced to 500 units. Preference was given to the local donors who insisted that their funds should be used for the procurement of containers.

Based on agreement with local authorities the Turkish Red Crescent defined the areas for the container camps and the establishment of the required infrastructures. The camps were established in the following locations:

Name of container camp	The number of beneficiaries sheltered	The number of containers installed	The number of containers furnished
UMUTKENT CONTAINER CAMP	6,470	1,294	1,294
HAYDARBEGY CONTAINER CAMP	1,000	180	180
ÇELEBİBAĞI CONTAINER CAMP	1,795	359	359
INDIVIDUAL DISTRIBUTION	835	167	167
Total	10,100	2,000	2,000

The above figures are given as they stood at the end of November 2012. More than 1,500 people are still living in the containers because the construction of the houses assigned to them has not been finalized. The Turkish Red Crescent has deployed its container collection team to the field, once people move out from the containers those will be collected by this team. After the collection of the containers those will be stored in the contingency stocks that TRC is obliged to keep in case another disaster happens. It has not been decided if they will be immediately used to meet the needs in shelter of those who need it.

The Federation contribution allowed purchasing 500 containers equipped with essential furniture and all other basic facilities. Furniture The table below shows the detailed breakdown of furniture items procured through IFRC contribution:

Furniture Item	Number of items
Refrigerator	500
Carpet	209
Wardrobe (textile) for clothes	500
Sofa and armchair	400
Dining table	500
Plastic stools	2,500
Bed	60
Electric heater (one in each room of the container)	1,000
Hot plate cooker	500



All containers were furnished with the following items: hot plate cooker, electric heater, bed, plastic stools, dining table, sofa and armchair, wardrobe, carpet and refrigerator. Photo: Turkish Red Crescent

Communications – Advocacy and Public Information

The Turkish Red Crescent Society has provided regular information on its relief actions to national and international institutions and media. Maintaining regular flow of information between the field and other major stakeholders was important for fundraising, advocacy and maintaining the profile of emergency operation.

At the onset of the disaster, the IFRC Europe Zone communications team produced over 40 interviews with world media (BBC, Sky, CNN, MSNBC etc), placed three stories on ifrc.org², and prepared a set of Questions&Answers and two photo galleries which have been distributed to National Societies.

Contact information

For further information specifically related to this operation please contact:

- **Turkish Red Crescent:** Aydın Özdemir, Disaster Operation Center (AFOM), Disaster Management Specialist, phone: +90 312 293 60 44, email: aydino@kizilay.org.tr
- **IFRC Europe Zone:** Alberto Monguzzi, Disaster Management Coordinator, Budapest, phone: +36 (1) 888 45 05; email: alberto.monguzzi@ifrc.org
- **IFRC Geneva:** Christine South, Operations Support, phone: +41 22 730 45 29; email: christine.south@ifrc.org

For Resource Mobilization and Pledges:

- **IFRC Zone:** Sophia Keri, Grant Administration and Programme Reporting Officer, phone: +36 (1) 888 45 04; email: sophia.keri@ifrc.org

For Performance and Accountability: (planning, monitoring, evaluation and reporting enquiries)

- **IFRC Zone:** Imre Nagy, Planning and Reporting Manager, phone: +36 (1) 888 45 26; email: imre.nagy@ifrc.org

² <http://www.ifrc.org/en/news-and-media/news-stories/europe-central-asia/turkey/turkey-earthquake-rescue-efforts-intensify-as-night-falls/>
<http://www.ifrc.org/en/news-and-media/press-releases/europe/turkey/turkey-earthquake-rescue-efforts-intensify-as-night-falls/>
<http://www.ifrc.org/news-and-media/news-stories/europe-central-asia/turkey/global-outpouring-of-solidarity-for-turkish-earthquake-operations/>



[Click here](#)

1. **Emergency Appeal interim financial report** [below](#)
 2. Click [here](#) to return to the title page
 3. Click [here](#) to go Annexes
-

How we work

All IFRC assistance seeks to adhere to the Code of Conduct for the International Red Cross and Red Crescent Movement and Non-Governmental Organizations (NGO's) in Disaster Relief and the Humanitarian Charter and Minimum Standards in Disaster Response (Sphere) in delivering assistance to the most vulnerable.

The IFRC's vision is to inspire, encourage, facilitate and promote at all times all forms of humanitarian activities by National Societies, with a view to preventing and alleviating human suffering, and thereby contributing to the maintenance and promotion of human dignity and peace in the world.

www.ifrc.org

Saving lives, changing minds.



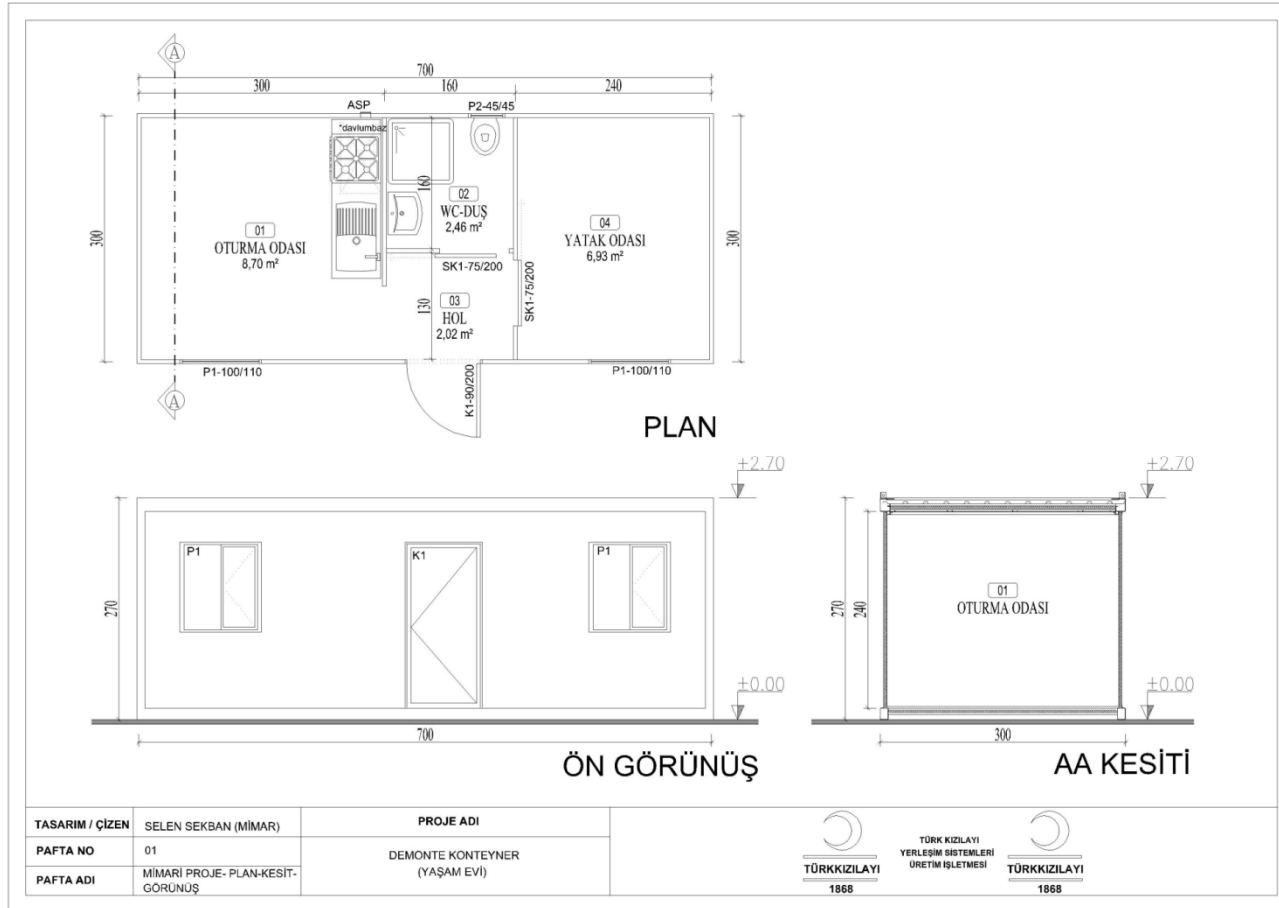
The IFRC's work is guided by Strategy 2020 which puts forward three strategic aims:

1. Save lives, protect livelihoods, and strengthen recovery from disaster and crises.
2. Enable healthy and safe living.
3. Promote social inclusion and a culture of non-violence and peace.

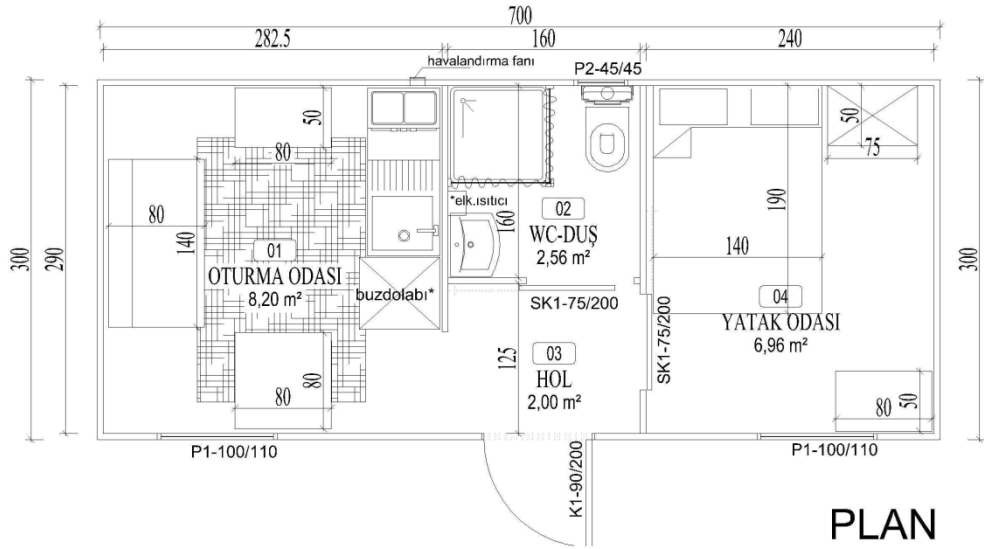
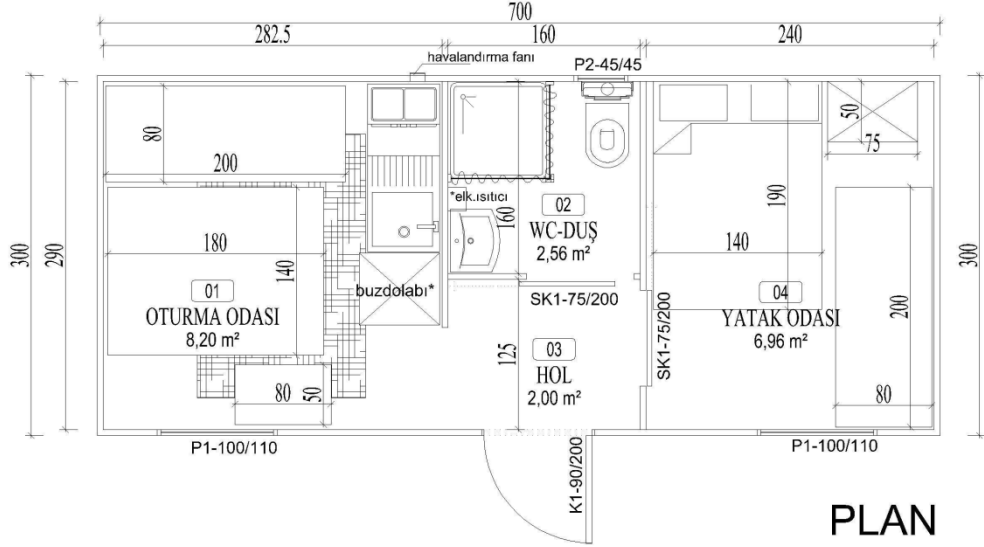
ANNEX 1
THE BREAKDOWN OF THE OVERALL DISTRIBUTION IN THE AFFECTED AREA

NAME OF THE AFFECTED AREA	TENT	MEVLANAHOUSE	BLANKET	MULTIPURPOSE TENT	90 m² TENT	TENT INFLATED 55 m²	CONTAINER WC	CONTAINER WC SHOWER	CONTAINER SHOWER	CONTAINER WC-SHOWER 13 M² (GROUP)	HEATER	SLEEPING BAG	MOBILE KITCHEN	BODY BAG	KITCHEN SET	S3 COOKER	LPG	GENERATOR	ENLIGHTENING BALOON	FOOD PARCEL	SANDWICH	ASSORTED FOOD KG	OFFICE CONTAINER	KITCHEN CONTAINER	LIVING CONTAINER	MATTRESS	CARAVAN TOWED	PREFABRICATED CONTAINER	
ERCIŞ	11,184	580	37,469	5	2	0	9	7	5	22	2,904	15,978	9	1,000	4,725	0	110	5	0	35,530	12,000	656,507.97	1	0	36	1,756	0	0	
VAN	41,657	3,064	175,216	374	26	2	17	10	4	44	3,927	7,634	3	1,958	16,771	20	2,000	32	6	39,099	11,944	1,392,087.42	12	4	22	13,661	32	1	
ADİLCEVAZ	150	0	625	0	0	0	0	0	0	0	0	0	0	0	0	0	0	0	0	0	0	0	0	0	0	0	0	0	0
ÖZALP		150																											
PATNOS	35	0	80	0	0	0	0	0	0	0	0	0	0	0	0	0	0	0	0	0	0	0	0	0	0	0	0	0	0
BITLİS	50	0	0	0	0	0	0	0	0	0	0	0	0	0	0	0	0	0	0	0	0	0	0	0	0	0	0	0	0
MALAZGİRT	50	0	0	0	0	0	0	0	0	0	0	0	0	0	0	0	0	0	0	0	0	0	0	0	0	0	0	0	0
TOTAL	53,126	3,794	213,390	379	28	2	26	17	9	66	6,831	23,612	12	2,958	21,496	20	2,110	37	6	74,629	23,944	2,048,595.39	13	4	58	15,417	32	1	

ANNEX 2 CONTAINER TECHNICAL DRAWING



ANNEX 3 CONTAINER TECHNICAL DRAWING - FURNISHED



MDRTR002 - Turkey - Van Earthquake

Appeal Launch Date: 26 oct 11

Appeal Timeframe: 26 oct 11 to 10 nov 12

Interim Report
I. Funding

Selected Parameters	
Reporting Timeframe	2011/10-2012/12
Budget Timeframe	2011/10-2012/11
Appeal	MDRTR002
Budget	APPROVED

All figures are in Swiss Francs (CHF)

	Pledge	Disaster Management	Health and Social Services	National Society Development	Principles and Values	Coordination	TOTAL
A. Budget		9,402,445					9,402,445
B. Opening Balance		0					0
Income							
Cash contributions							
<i>American Red Cross</i>	M1110102	86,386					86,386
<i>American Red Cross</i>	M1111061	655,450					655,450
<i>American Red Cross</i>	M1201124	82,090					82,090
<i>Australian Red Cross</i>	M1111060	461,909					461,909
<i>British Red Cross</i>	M1111089	655,571					655,571
<i>China Red Cross, Hong Kong branch</i>	M1111010	23,410					23,410
<i>Danish Red Cross</i>	M1112063	21,170					21,170
<i>Estonia Red Cross</i>	M1201107	146					146
<i>French Government</i>	M1203019	1,205					1,205
<i>Japanese Red Cross Society</i>	M1112054	240,079					240,079
<i>Latvian Red Cross</i>	M1112046	60,931					60,931
<i>New Zealand Government</i>	M1111053	176,718					176,718
<i>Norwegian Red Cross</i>	M1111094	1,213,933					1,213,933
<i>On Line donations</i>	M1111126	1,344					1,344
<i>On Line donations</i>	M1111135	2,737					2,737
<i>On Line donations</i>	M1111174	3,211					3,211
<i>On Line donations</i>	M1112017	280					280
<i>On Line donations</i>	M1112116	526					526
<i>On Line donations</i>	M1112117	57					57
<i>On Line donations</i>	M1201024	2,581					2,581
<i>On Line donations</i>	M1201110	869					869
<i>On Line donations</i>	M1201120	52					52
<i>On Line donations</i>	M1205007	740					740
<i>OPEC Fund For International Development</i>	M1111009	185,770					185,770
<i>Poland Government</i>	M1112056	138,592					138,592
<i>Red Crescent Society of the United Arab Emirates</i>	M1111012	18,327					18,327
<i>Red Cross of Monaco</i>	M1111154	24,749					24,749
<i>Swedish Red Cross</i>	M1111088	278,519					278,519
<i>Taiwan Red Cross Organisation</i>	M1202087	10,060					10,060
<i>The Canadian Red Cross Society</i>	M1205114	4,566					4,566
<i>The Netherlands Red Cross</i>	M1112101	48,409					48,409
<i>The Republic of Korea National Red Cross</i>	M1111122	166,834					166,834
<i>The Republic of Korea National Red Cross</i>	M1204114	186,299					186,299
<i>United States Government - USAID</i>	M1111123	213,744					213,744
<i>VERF/WHO Voluntary Emergency Relief</i>	M1111017	1,000					1,000
C1. Cash contributions		4,968,264					4,968,264
Inkind Goods & Transport							
<i>Belgian Red Cross (Flanders)</i>		149,468					149,468
<i>Canadian Government</i>		219,931					219,931
<i>Finnish Red Cross</i>		763,523					763,523
<i>Icelandic Red Cross</i>		42,732					42,732
<i>Norwegian Red Cross</i>		257,076					257,076
<i>The Canadian Red Cross Society</i>		71,119					71,119
<i>The Netherlands Red Cross</i>		562,863					562,863

International Federation of Red Cross and Red Crescent Societies

MDRTR002 - Turkey - Van Earthquake

Appeal Launch Date: 26 oct 11

Appeal Timeframe: 26 oct 11 to 10 nov 12

Interim Report

Selected Parameters	
Reporting Timeframe	2011/10-2012/12
Budget Timeframe	2011/10-2012/11
Appeal	MDRTR002
Budget	APPROVED

All figures are in Swiss Francs (CHF)

C2. Inkind Goods & Transport	2,066,712					2,066,712
Other Income						
<i>IFRC at the UN Inc allocations</i>	144,675					144,675
<i>Programme & Services Support Recover</i>	106,821					106,821
C4. Other Income	251,495					251,495
C. Total Income = SUM(C1..C4)	7,286,471					7,286,471
D. Total Funding = B + C	7,286,471					7,286,471
Coverage = D/A	77%					77%

II. Movement of Funds

	Disaster Management	Health and Social Services	National Society Development	Principles and Values	Coordination	TOTAL
B. Opening Balance	0					0
C. Income	7,286,471					7,286,471
E. Expenditure	-6,310,562					-6,310,562
F. Closing Balance = (B + C + E)	975,908					975,908

International Federation of Red Cross and Red Crescent Societies

MDRTR002 - Turkey - Van Earthquake

Appeal Launch Date: 26 oct 11

Appeal Timeframe: 26 oct 11 to 10 nov 12

Interim Report

Selected Parameters	
Reporting Timeframe	2011/10-2012/12
Budget Timeframe	2011/10-2012/11
Appeal	MDRTR002
Budget	APPROVED

All figures are in Swiss Francs (CHF)

III. Expenditure

Account Groups	Budget	Expenditure					TOTAL	Variance
		Disaster Management	Health and Social Services	National Society Development	Principles and Values	Coordination		
A							B	A - B
BUDGET (C)		9,402,445					9,402,445	
Relief items, Construction, Supplies								
Shelter - Relief	1,388,588	1,388,066				1,388,066	522	
Shelter - Transitional	6,050,000	2,896,038				2,896,038	3,153,962	
Clothing & Textiles	344,297	336,977				336,977	7,320	
Utensils & Tools		120,483				120,483	-120,483	
Total Relief items, Construction, Supplies	7,782,885	4,741,564				4,741,564	3,041,321	
Land, vehicles & equipment								
Office & Household Equipment		97,310				97,310	-97,310	
Total Land, vehicles & equipment		97,310				97,310	-97,310	
Logistics, Transport & Storage								
Storage		487				487	-487	
Distribution & Monitoring		423,316				423,316	-423,316	
Transport & Vehicles Costs	935,702						935,702	
Logistics Services		9,664				9,664	-9,664	
Total Logistics, Transport & Storage	935,702	433,467				433,467	502,235	
Personnel								
International Staff	15,000	17,758				17,758	-2,758	
National Staff		3,355				3,355	-3,355	
Total Personnel	15,000	21,113				21,113	-6,113	
Consultants & Professional Fees								
Professional Fees	25,000	35,930				35,930	-10,930	
Total Consultants & Professional Fees	25,000	35,930				35,930	-10,930	
General Expenditure								
Travel	10,000	2,985				2,985	7,015	
Office Costs	25,000						25,000	
Communications	10,000	146				146	9,854	
Financial Charges	15,000	1,405				1,405	13,595	
Other General Expenses	10,000	0				0	10,000	
Shared Office and Services Costs		80				80	-80	
Total General Expenditure	70,000	4,615				4,615	65,385	
Operational Provisions								
Operational Provisions		586,169				586,169	-586,169	
Total Operational Provisions		586,169				586,169	-586,169	
Indirect Costs								
Programme & Services Support Recov	573,858	357,295				357,295	216,563	
Total Indirect Costs	573,858	357,295				357,295	216,563	
Pledge Specific Costs								
Pledge Earmarking Fee		28,798				28,798	-28,798	
Pledge Reporting Fees		4,300				4,300	-4,300	
Total Pledge Specific Costs		33,098				33,098	-33,098	
TOTAL EXPENDITURE (D)	9,402,445	6,310,562				6,310,562	3,091,883	
VARIANCE (C - D)		3,091,883				3,091,883		