

Operation Update Report

Philippines: Floods and Typhoons 2020 (Typhoon Goni)

Emergency appeal n° MDRPH041	GLIDE n° TC-2020-000214-PHL
Operation update n° 3: 5 March 2021	Timeframe covered by this update: 30 October 2020 – 31 January 2021
Operation start date: 30 October 2020	Operation timeframe: 24 months End date: 30 November 2022
Funding requirements (CHF): 8.5 million (total requirements for EA is 10.8 million / Federation-wide funding requirement is CHF 16 million)	DREF amount initially allocated: CHF 750,000
N° of people being assisted: TBD (in progress)	
Red Cross Red Crescent Movement partners currently actively involved in the operation: PRC is working with the International Federation of Red Cross and Red Crescent Societies (IFRC) in this operation. ICRC and eight National Societies are present in the Philippines: American Red Cross, Canadian Red Cross, Finnish Red Cross, German Red Cross, Japanese Red Cross Society, Netherlands Red Cross, Spanish Red Cross, and Qatar Red Crescent Society.	
Other partner organizations actively involved in the operation: Government coordination is led by the National Disaster Risk Reduction and Management Council (NDRRMC). Government ministries and agencies involved include the Department of Social Welfare and Development (DSWD), Local Government Units, the Philippine Armed Forces, and the Philippine National Police Force. I/NGOs and UN agencies are monitoring the situation through the Humanitarian Country Team (HCT) supported by OCHA.	

A. SITUATION ANALYSIS

Description of the disaster

Typhoon Goni which is locally known as Rolly, made landfall on 1 November 2020 as a super typhoon (Category 5) over Catanduanes with maximum sustained winds of 225 kilometers per hour and gusts of up to 280 kilometers per hour. It's the Philippines' nineteenth named storm for the year 2020.

At its peak strength on landfall on Catanduanes and Albay, Super Typhoon Goni caused widespread damage to high-risk structures and almost total damage to structures made of light materials in the highly exposed coastal areas. Many roof failures were observed in houses and industrial buildings. Electrical power distribution and communication services were severely disrupted. Water systems were severely damaged. Agriculture and livelihoods were severely affected. In one area on the slopes of Mayon Volcano, there was a lahar flow that caused the near-total destruction of one village.

The last report of National Disaster Risk Reduction and Management Council (NDRRMC) [Sitrep #12](#) as of 11 November 2020 and Department of Social Welfare and Development - Disaster Response Operations Monitoring and Information Center- (DSWD - DROMIC) [report #36](#) as of 18 December 2020 are summarized below:



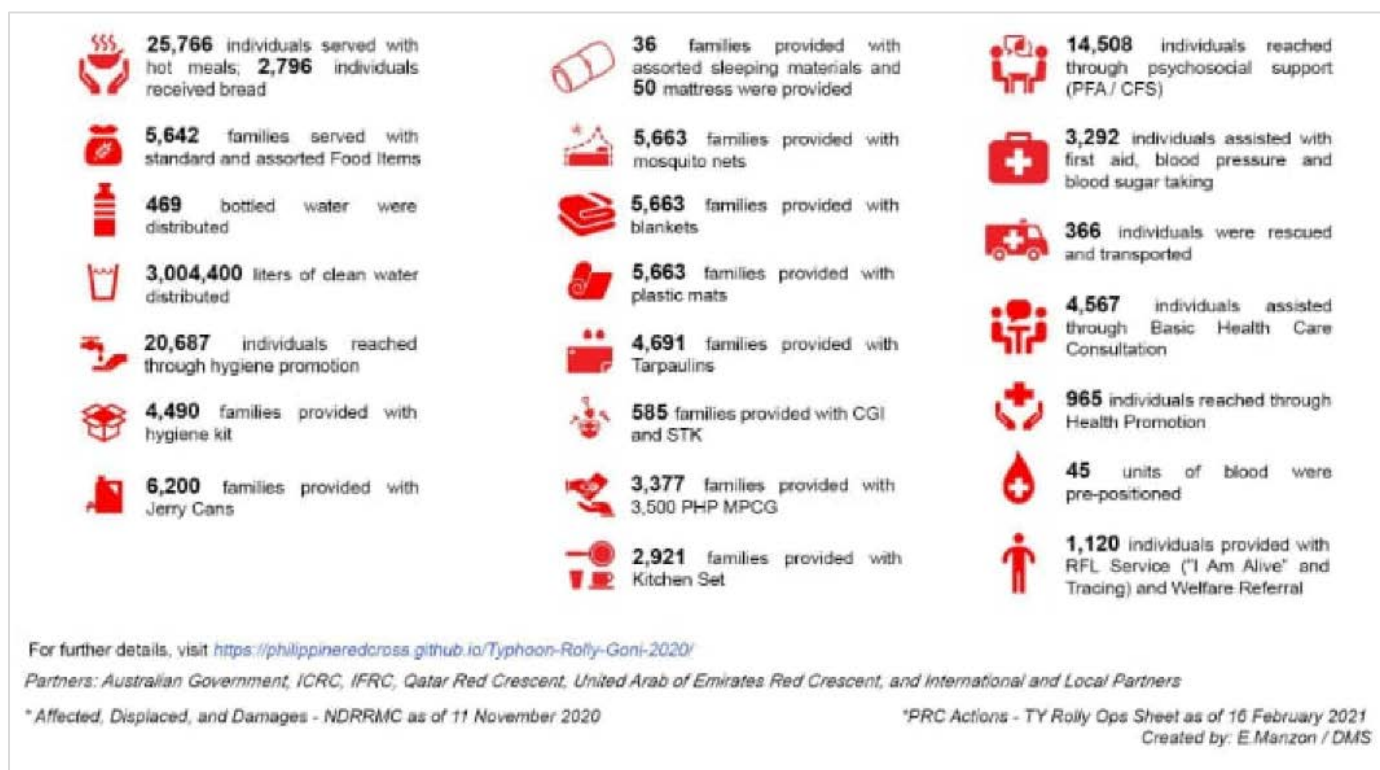
Volunteers providing step by step guidance on hand washing to children (Photo: IFRC).

Category	Super Typhoon Goni
Affected	803,572 families or 3,355,995 persons were affected in 5,996 barangays in Regions NCR, II, III, CALABARZON, MIMAROPA, V, VIII, and CAR
Casualties and injured	25 dead, 399 injured, 6 missing.
Houses damaged	There are 398,266 damaged houses; of which, 69,576 are totally damaged and 328,690 are partially damaged
Damage to agriculture	Estimated PHP 5.01 billion worth of damage to crops, livestock, fisheries, and agricultural facilities.
Damage to infrastructure	Estimated PHP 12.8 billion worth of damage to roads, bridges, communication, ports, etc.
Social infrastructure	Health and education infrastructure severely affected. DepEd Region V reported 41% (1,587) schools in Bicol suffered damages worth PHP 6.6 billion.

Summary of current response

Overview of Host National Society

As of 16 February 2021, PRC had been able to carry out the following activities.



Overview of Red Cross Red Crescent Movement in country

PRC is leading the overall response operation. PRC works with the IFRC, ICRC, and National Societies in-country: American Red Cross, Canadian Red Cross, Finnish Red Cross, German Red Cross, Japanese Red Cross Society, the Netherlands Red Cross, Spanish Red Cross, and Qatar Red Crescent Society.

Federation Wide funding situation

The operation has seen multilateral and bilateral supports from partners National Societies and governments. The operation has received multilateral funding from Austrian Red Cross, British Red Cross / Foreign, Commonwealth & Development Office (FCDO), Canadian Red Cross/ Canadian Government, Czech Government, Finnish Red Cross, Honk Kong Red Cross / Disaster Relief Fund (DFA) – of Government of Hong Kong, Japanese Red Cross, Monaco Red Cross, Netherland Red Cross, New Zealand Government, Spanish Government, Swedish Red Cross / Sweden's government agency for development (SIDA) and Swiss Red Cross / Swiss Agency for Development and Cooperation (SDA). Furthermore, there were online donations raised through online platforms.

The Netherlands Red Cross, Qatar Red Crescent, American Red Cross, Spanish Red Cross, and ICRC have provided various in-kind support to the operation. Singapore Red Cross, Qatari Red Crescent, Korean Embassy, and Thai Red Cross are providing bilateral support to the Philippine Red Cross, informed at least in part, by the IFRC Emergency Appeal.

Overview of non-RCRC actors in country

As an auxiliary to the public authorities, PRC maintains a strong relationship with government bodies through participation or collaboration with (i) the NDRRMC; (ii) the provincial, municipal and barangay (village) disaster risk reduction and management councils; and (iii) the local government units defined in the Disaster Risk Reduction and Management Act from 2010. PRC participates in NDRRMC meetings and coordinates with the Department of Social Welfare and Development (DSWD), and the Department of Health (DOH). PRC is coordinating with the NDRRMC for Pre-Disaster Risk Analysis (PDRA) and response Cluster activation, and through the local chapters' coordination with their Municipal, City, Provincial, and Regional DRRMOs especially in Bicol Region. PAGASA and NDRRMC continuously provided updates including on preparedness measures, stocks of household items, and other resources; weather forecasts/advisories and gale warnings to regional counterparts and other agencies through formal updates.

Inter-agency coordination

At the country level, PRC and IFRC consistently participate in meetings of the Humanitarian Country Team (HCT) held both during disasters and non-emergency times. PRC and IFRC are involved in relevant government-led cluster information sharing, planning, and analysis at all levels while IFRC supports PRC coordination efforts through representation in other relevant clusters as required.

IFRC, as part of global shelter commitment, is leading the Shelter Cluster in the Philippines in support of DSWD, the lead agency in the Government of the Philippines cluster structure. The Humanitarian Needs and Priorities (HNP) developed for typhoon Goni is until the end of April 2021 targeting 60,000 people (12,000 HH). A 4w dashboard¹ and gap analysis² have been created to monitor partner's presence and shelter activities. The shelter cluster website has been set up and maintained for the response including all the information, meeting minutes, and Information Education and Communication (IEC) materials.

Needs analysis and scenario planning


Please see [Emergency plan of Action \(EPoA\)](#) for Needs analysis and Operation Risk Assessment.

B. OPERATIONAL STRATEGY

Proposed strategy

Please see [Emergency plan of Action \(EPoA\)](#) for operation strategy.

C. DETAILED OPERATIONAL PLAN

	Shelter People reached: 20,870 Male: 10,435 Female: 10,435	
Outcome 1: Communities in disaster and crisis affected areas restore and strengthen their safety, well-being and longer-term recovery through shelter and settlement solutions		
Indicators:	Target	Actual
<i>Number of affected people's safety, well-being and settlement recovery are restored/strengthened.</i>	25,000	20,870
Output 1.1: Shelter and settlements and basic household items assistance is provided to the affected families.		
Indicators:	Target	Actual
<i>Number of affected families provided with essential household items</i>	5,000	4,174

¹<https://app.powerbi.com/view?r=eyJrIjojOTIhM2YxY2YtZTA3YS00YzgzLTk2NmYtMGUzOTBkOTM4ZjAzliwidCI6ImRiNTQzZjk3LWmwZjEtNGY5Ny04YzI0LWJmZi0wFhMWE2MyIsImMiOiJ9>

²<https://app.powerbi.com/view?r=eyJrIjojOTIhM2YxY2YtZTA3YS00YzgzLTk2NmYtMGUzOTBkOTM4ZjAzliwidCI6ImRiNTQzZjk3LWmwZjEtNGY5Ny04YzI0LWJmZi0wFhMWE2MyIsImMiOiJ9>

Number of affected families provided with tarpaulins (emergency shelter)	5,000	3,412
Number of affected families provided with shelter toolkit	3,000	415
Number of families provided with early recovery shelter assistance through conditional cash grants	3,000	to be conducted

Progress towards outcomes

Upon the forecast of the typhoon, PRC assisted 331 individuals with pre-emptive evacuation.

To assist the families that have lost their belongings during the typhoon, 4,174 families were provided with a standard household items pack/Non-Food Item (NFI). The standard pack³ includes two tarpaulins, two sleeping mats, two blankets, two mosquito nets, one hygiene kit, and two jerry cans. Furthermore, the Netherland Red Cross has provided kitchen sets to 1,000 families.

Table 1: Household items provided through the EA

Type	Province	# of families						
		Target	Hygiene Kit	Jerry Can	Blanket	Mats	Mosquito Net	Tarpaulin
Essential household items	Albay	1,500	1,491	1,491	1,491	1,491	1,491	1,491
	Cam Sur	1,000	65	291	883	883	883	294
	Catanduanes	1,800	1,800	1,800	1,800	1,800	1,800	1,627
Total		4,300	3,356	3,582	4,174	4,174	4,173	3,412

Emergency Shelter Assistance (ESA) will be provided in two phases. A total of 500 families and 1,000 families will be reached respectively.

To-date a total of 415 families were supported with ESA. Each family is provided with 10 CGI sheets, 1 plain sheet, and tools (common wire nails and umbrella nails). ESA will enable families to fix their roofs immediately. The CGI sheets will be used for roofing, the plain sheet will be used for the ridge capping and the nails will be used for fixing. People that received said assistance were also provided with a safe shelter awareness session to ensure proper installation of CGI and other materials. Phase-II to be started from mid-February.



NFI distribution site arranged according to COVID-19 regulations (Photo: PRC).

PRC mobilized its preparedness stocks for the relief distributions. IFRC logistics unit has initiated the procurement process to replenish the items distributed. Hygiene kits, jerry cans, mosquito nets, and tarpaulins were procured via Logistics Unit in Asia Pacific Regional Office (APRO). All the items have been received in country. Blankets and mats are being procured locally, the procurement process is ongoing, to be completed by 31 March 2021.

Local Government Unit (LGU) protocols on the prevention of COVID-19 are always being observed in all activities. PRC provided a face shield for all beneficiaries during meetings and distributions. It also ensures no direct contact between PRC volunteers and beneficiaries. Relief distribution is often being done in large open spaces where items were laid down and beneficiaries can claim the items without direct contact with anyone.

PRC will start its recovery operation in mid-March. A total of 300 families will be provided with Shelter Repair Assistance (SRA) through conditional cash grants to repair their damaged homes. Furthermore, a total of 130 families will be provided with Full Shelter Assistance (FRA) whose homes were totally damaged by the typhoons through the distribution of conditional cash grants. It will also give provision for affected families to complement their shelters with additional facilities such as latrines, handwashing facilities). Both SRA and FRA will be complemented with awareness raising or training on safe shelter awareness.

Output 1.2: Technical support, guidance and awareness raising in safe shelter design and settlement planning and improved building techniques are provided to affected households

Indicators:	Target	Actual
Number of affected families provided with support on safe shelter awareness.	3,000	to be conducted

³ There could be changes to the standard pack based on the needs on the ground.

Number of affected families provided with technical support and guidance on safer shelter awareness (as part of early recovery assistance)	3,000	to be conducted
Number of carpenters provided with technical support and guidance on safer shelter awareness appropriate to the type of support they are giving	60	to be conducted
Progress towards outcomes		
PRC staff with the support of IFRC Engineer and Architect, disseminated key safety messages in fixing tarpaulins and CGI sheets.		



Livelihoods and basic needs

People reached: 28,210
 Male: 14,105
 Female: 14,105

Outcome 1: Communities, especially in disaster and crisis affected areas, restore and strengthen their livelihoods

Indicators:	Target	Actual
Number of affected families able to meet their basic needs	5,000	5,642
Number of affected families whose livelihoods are restored to pre-disaster level	4,000	to be conducted

Output 1.2: Basic needs assistance for livelihoods security including food is provided to the most affected communities

Indicators:	Target	Actual
Number of Ready to Eat Food / Hot Meals provided	13,500	25,766
Number of dry food packs provided	3,000	5,642

Progress towards outcomes

Displaced families from different evacuation centres were provided with ready-to-eat food or hot meals. A total of 25,766 ready-to-eat hot meals were served. PRC additionally distributed food packages to 5,642 families. A dry food package includes 5kg rice, 5 canned goods, 5 noodles packets, and 12 coffee packets. These items are procured locally by the respective chapters. Furthermore, 800 individuals at different evacuation centres in Catanduanes Province have been provided with hot meals from the American Red Cross. Moreover, 1,000 displaced families at different locations in Catanduanes Province have been provided food packs from the American Red Cross. Each family received the following items in the food pack: 5kg rice, 5 canned sardine, 5 packs of meat load, 5 packs of corned beef, 5 packs of noodles, and 12 sachets of three in one coffee. Additionally, the Netherland Red Cross has also provided food items to 3,100 families.



Providing hot meals to affected people (Photo: IFRC).

Output 1.3: Household livelihoods security is enhanced through food production, increased productivity and post-harvest management (agriculture-based livelihoods)

Indicators:	Target	Actual
Number of affected families reached with awareness raising/training on sustainable livelihoods through CMLP and HLA	4,000	to be conducted
Number of affected families provided with conditional cash grants through HLA	4,000	to be conducted
Number of communities receive support through the CMLP that report improved net income through skill building	10	to be conducted

Progress towards outcomes

PRC deployed teams composed of both PRC and IFRC technical persons to conduct detailed assessments. Based on the assessments most of the economic vulnerable households are still battling to cope with economic losses and at a risk of facing repeated cycles of indebtedness. To support 2,000 affected Abaca and rice farmers, PRC has prioritized providing Household Livelihood Assistance (HLA) through conditional cash grant which aims to replace assets lost, re-start livelihood activities or diversify livelihood opportunities. The assistance will be restricted to livelihood activities and will be given in two instalments to ensure the right usage of the cash grant.

Furthermore, PRC will provide support to 10 community-based organizations through Community Managed-Livelihood Project (CMLP) which aim to help set up and support groups within communities to design and manage their livelihood projects. The intervention supports the enhancement of existing livelihood ventures or diversification and seeks to directly benefit a group of vulnerable households and indirectly, a larger section of the community.

Community Engagement and Accountability is being emphasized in all activities. A dedicated mobile phone is being used to accept inquiries and feedback from both people supported and any community member. A feedback box is established in all communities and is checked regularly to respond.

Output 1.5: Households are provided with unconditional/multipurpose cash grants to address their basic needs

Indicators:	Target	Actual
Number of affected families provided with multipurpose cash grants to address their basic needs	5,000	1,371

Progress towards outcomes

PRC deployed teams to conduct rapid disaster assessment and needs analysis (RDANA). From the funding raised through EA, PRC has prioritized providing multipurpose cash grants to 3,500 families; 2,000 in Albay and 1,500 in Cam Sur. Furthermore, 2,600 vulnerable families from 39 Barangays (communities) of 6 municipalities in Catanduanes Province have been supported via bilateral support from American Red Cross. Each family has received CHF 70 (PHP 3,500) as a one-time transfer via Philpost. Additionally, the Netherland Red Cross has provided cash grants to 2,500 families in the affected areas.

Of the funding raised through EA, a total of 1,009 households received multipurpose cash grant (MCPG) in the province of Albay while 362 households received it in the province of Cam Sur. The chapter teams with the support of the National Headquarters are now processing documents to complete the remaining households for the MCPG. Constant communication between local chapter and communities are being observed to keep people updated on the status of the project. In addition, key messages and contact details of local chapter were printed and posted in the community for feedback.

The IM surge from the Spanish Red Cross is supporting the PRC with beneficiary data cleaning and database management.

Table 2: Multipurpose cash grants provided with IFRC funding

Type	Province	Tarpaulin	
		Target	Actual
Multipurpose cash grants	Albay	2,000	1,009
	Cam Sur	1,500	362
Total		3,500	1,371



Distribution of multipurpose cash (Photo: PRC).



Health

People reached: 20,870

Male: 10,435

Female: 10,435

Outcome 1: The immediate risks to the health of affected populations are reduced

Indicators:	Target	Actual
Number of people reached through NS emergency health management programmes	25,000	20,870

Output 1.1: The health situation and immediate risks are assessed using agreed guidelines

Indicators:	Target	Actual
Initial assessment of health situation carried out (as part of RDANA)	Yes	Yes

Progress towards outcomes

Health needs were assessed during the initial assessment conducted by chapter, based on secondary and historical data.

The operations must be COVID-19-safe for personnel and affected communities. Considering the current COVID-19 situation in the country, PRC has incorporated COVID-19 guidelines into its response protocols. PRC's staff are always requested to use appropriate personal protective equipment (PPE), swab test before going to the field and vehicles will be disinfected regularly. These measures will limit the risks of spreading the virus and protect those who are involved in the operation (staff, volunteers, and relief item recipients). As prevention measures, PRC has distributed 1,000 face masks and 400 face shields.

Output 1.8: Minimum initial maternal and neonatal health services provided to target population

Indicators:	Target	Actual
Number of pregnant women that received dignity kits	500	deprioritized
Number of pregnant and lactating women that received new-born kits	500	deprioritized
Number of health centres provided with screening kits	10	deprioritized

Progress towards outcomes

The needs were covered by the other organizations present on the ground. Hence the provision of dignity kits, new-born kits and screening kits has been deprioritised. If need arise, assistance to be considered.

Outcome 2: The immediate risks to the health of affected populations are reduced through improved access to medical treatment

Indicators:	Target	Actual
Number of people provided with medical treatment (based on need)	based on need	4,567

Output 2.3: Target population is reached with Search and Rescue activities

Indicators:	Target	Actual
Number of ambulances mobilized to provide immediate transportation services (based on need)	based on need	1
Number of people provided with first aid (based on need)	based on need	3,292
Number of people provided with blood pressure readings (based on need)	based on need	3,292
Number of volunteers trained on basic life support and first aid	50	to be identified
Number of volunteers mobilized to provide first aid and blood pressure reading services in the affected areas	50	to be identified
Number of chapters' first aid kits provided (First Aid Jump Kits)	75	to be identified

Progress towards outcomes

PRC mobilized one ambulance in the Legazpi city in Albay Province to support transportation of injured people to medical facilities. Furthermore, PRC mobilized its staff, volunteers, and assets to provide first aid support and search and rescue operations. A total of 3,292 individuals were provided with first aid and blood pressure measurement, and 4,567 individuals were assisted through basic health care consultations. Furthermore, as part of search and rescue support, 366 individuals were rescued and transported.



Medical tent set-up which is used as an Extension Emergency Room/Triage (Photo: PRC).

PRC set-up a Medical Tent (72 sqm) to support the Eastern Bicol Medical Center in Catanduanes. This Medical Tent serves as an Extension Emergency Room or Triage. Assistance is planned to be extended for few more months.

The PRC Emergency Response Unit and Caravan equipped with 18 multipurpose vehicles and other assets were deployed to assist search and rescue operations, and debris clearing operations. PRC conducted debris/landslide cleaning activities in 13 barangays of Catanduanes.

Outcome 4: Transmission of diseases of epidemic potential is reduced

Indicators:	Target	Actual
<i>Number of people reached with community-based disease prevention, epidemic control and health promotion programming in the affected areas</i>	25,000	to be conducted

Output 4.1: Community-based disease control and health promotion is provided to the target population

Indicators:	Target	Actual
<i>Number of volunteers trained on Epidemic Control for Volunteers (ECV) Toolkit</i>	300	to be conducted
<i>Number of volunteers mobilized to disseminate epidemic prevention messages</i>	300	to be conducted
<i>Number of volunteers continuously monitor the outbreak situations and report back to the OPCEN for immediate response</i>	300	to be conducted

Progress towards outcomes

No update as of reporting period.

Output 4.2: Vector-borne diseases are prevented

Indicators:	Target	Actual
Number of affected families provided with insecticide treated mosquito nets	5,000	4,174

Progress towards outcomes

A total of 4,174 families were provided with insecticide treated mosquito nets. These nets are part of the standard package.

Outcome 6: The psychosocial impacts of the emergency are lessened

Indicators:	Target	Actual
<i>Number of people provided with direct psychosocial support</i>	1,000	438

Output 6.1: Psychosocial support provided to the target population as well as to RCRC volunteers and staff

Indicators:	Target	Actual
<i>Number of staff receive Training of Trainers on psychosocial support</i>	20	to be conducted
<i>Number of volunteers trained on psychosocial support</i>	30	to be conducted

Progress towards outcomes



After a disaster people in the affected communities are dealing with psychological distress due to social disruption and impact of the event on the home and family. The PRC, through its well-trained RC 143 volunteers provided Psychosocial Support (PSS) and Psychological First Aid (PFA) to 14,508 individual who had been either stranded or displaced. Of which 438 were supported with IFRC funding.

PRC volunteer providing Psychological First Aid (PFA) to a person affected by the Typhoon Goni (Photo: PRC).



Water, sanitation and hygiene

People reached: 20,687

Male: 10,344

Female: 10,343

Outcome 1: Immediate reduction in risk of waterborne and water related diseases in targeted communities

Indicators:	Target	Actual
Number of people provided with water, sanitation and hygiene-related services that meet agreed standards according to specific operational and programmatic context	50,000	20,687

Output 1.1: Continuous assessment of water, sanitation and hygiene situation is carried out in targeted communities

Indicators:	Target	Actual
Initial assessment of water, sanitation and hygiene situation carried out (as part of RDANA)	15	7 provinces

Progress towards outcomes

Assessment teams were deployed in Sorsogon, Albay, Catanduanes Masbate, Camarines Norte, Camarines Sur and Batangas. Initial assessment and RDANA results have identified needs for water supply. There have been water interruptions in the affected areas due to damage to the pipelines and the absence of electricity.

Output 1.2: Daily access to safe water which meets Sphere and WHO standards in terms of quantity and quality is provided to target population

Indicators:	Target	Actual
Number of litres of water distributed (according to WHO standards)	2,000,000	3,004,400
Number of families targeted with jerry cans	5,000	3,582

Progress towards outcomes

To meet the water needs, PRC deployed five water tankers and a bladder water filtration unit to distribute safe drinking water. A total of 3,004,400 litres of water has been treated and distributed by PRC. With the support of the IFRC, the PRC has distributed 12,000 litres of water and jerry cans (10L) to 3,582 affected families.

PRC mobilized its RC143 WASH volunteers to support the operating of the water treatment unit. These volunteers monitored the use of water at the household level, conducted water quality testing, and conducted sessions on water storage, treatment, and utilization.



Water distribution to people 15L to each family (Photo: PRC).

Output 1.3: Adequate sanitation which meets Sphere standards in terms of quantity and quality is provided to target population

Indicators:	Target	Actual
Number of temporary latrines installed	15	To be conducted
Number of temporary bathing and/or shower facilities installed	15	To be conducted
Number of handwashing facilities installed	15	To be conducted
Number of latrines built as part of shelter project	1,000	To be conducted
Number of sanitation facilities / evacuation centres are cleaned via cash for work modality	45	To be conducted

Progress towards outcomes

No update as of reporting period.

Output 1.4: Hygiene promotion activities which meet Sphere standards in terms of the identification and use of hygiene items provided to target population

Indicators:	Target	Actual
Number of people reached by hygiene promotion	25,000	20,687

Progress towards outcomes

PRC has reached 20,687 individuals with hygiene promotion activities,. This has included messaging on handwashing, menstrual hygiene management, solid waste disposal and safe water storage and treatment. Furthermore, PRC has incorporated COVID-19 related messaging in the hygiene promotion activities. These awareness sessions will be conducted through-out the whole program timeline.

Output 1.5: Hygiene-related goods which meet Sphere standards and training on how to use those goods is provided to the target population

Indicators:	Target	Actual
Number of families provided with hygiene kits	5,000	3,356

Progress towards outcomes

PRC has distributed 3,356 hygiene kits to affected people which were dispatched from PRC prepositioned stocks. The distributions were combined with sensitization on their use and dissemination of key hygiene messages.

Hygiene kit items	
Body soap - 100 gr	(12 pcs)
laundry soap - 200 gr	(5 pcs)
Sanitary pads	(40 pcs)
Hand towel	(3 pcs)
Toilet paper	(6 pcs)
Bath towel	(2 pcs)
Toothpaste – 75ml tube	(2 pcs)
Toothbrush	(5 pcs)
Razor	(4 pcs)



Person received a NFI standard kit including a hygiene kit (Photo: PRC).



Protection, Gender and Inclusion

People reached: 32,210

Male: 16,605

Female: 16,605

Outcome 1: Communities identify the needs of the most vulnerable and particularly disadvantaged and marginalised groups, as a result of inequality, discrimination and other non-respect of their human rights and address their distinct needs

Indicators:	Target	Actual
Number of people provided with PGI services	100,000	32,210

Output 1.1: Programmes and operations ensure safe and equitable provision of basic services, considering different needs based on gender and other diversity factors

Indicators:	Target	Actual
Initial assessments focus on key PGI areas is carried out (as part of RDANA)	Yes	Yes
Number of staff and volunteers are trained on IFRC PGI minimum standards in emergencies	60	to be conducted
Sex-age and disability disaggregated data is collected	Yes	Yes

Progress towards outcomes

Refer [Operations Update #2](#) for details.

Output 1.2: Emergency response operations prevent and respond to sexual- and gender-based violence and all forms of violence against children.

Indicators:	Target	Actual
Percentage of staff and volunteers sign the code of conduct	100	100
Number of temporary learning centres are established	3	Deprioritised
Number of children reached with Dep of Education approved school kits	1,500	To be conducted

Progress towards outcomes

IFRC has zero-tolerance for any form of violence against children. Child protection policy is part of the mandatory orientation provided to volunteers mobilized in this operation where all staff and volunteers signed a document that they have read, understood, and would abide by the policy.

Careful programming across all the sectors and operational areas of IFRC ensured that children are protected from exploitation and abuse regardless of their nationality, culture, ethnicity, gender, religious or political beliefs, socio-economic status, family or criminal background, physical or mental health, or any other factors for discrimination.

Part of the volunteer and staff recruitment process is to sign a document that they have read, understood, and would abide by the PRC code of conduct. PRC establish child friendly and has reached 4,567 children. This assistance is provided via PRC bi-lateral funding raised. Through PRC's welfare services, traumatized individuals receive psychosocial support. Psychosocial support helps individuals cope with fear and anxiety due to the trauma caused by the typhoon, especially for children.



PRC volunteer providing learning support to children in a child friendly space (Photo: PRC).



Migration

People reached: 1,120

Male: 560

Female: 560

Outcome 1: Communities support the needs of migrants and their families and those assisting migrants at all stages of migration (origin, transit and destination)

Indicators:	Target	Actual
Number of displaced people reached with information and services provided from welfare desks	15,000	1,120

Output 1.1: Assistance and protection services to migrants and their families are provided and promoted through engagement with local and national authorities as well as in partnership with other relevant organizations.

Indicators:	Target	Actual
Number of affected people have access to basic services	15,000	1,120

Progress towards outcomes

Displaced populations who are staying in different evacuation centres have been supported with psychosocial support, food water, and household items. Through the seven welfare desks, displaced populations are being provided with PRC services such as: i) restoring family links (RFL); (ii) tracing; (iii) inquiry and communications; (iv) contact of relatives; and (v) referral.

Output 1.3: Family links are restored for people separated from, or without news of, their loved ones as a result of the disaster

Indicators:	Target	Actual
Number of welfare desks providing RFL services in the affected areas.	15	4

Progress towards outcomes

Part of the standard services provided under the welfare desk set up by PRC are (i) restoring family links; (ii) tracing; and (iii) referral. In this operation, 1,120 individuals were provided with Restoring Family Links (RFL) services (I Am Live), tracing, and free calls.

To capacitate the welfare unit an RFL kit is being procured. The kit includes one Thuraya SatSleeve Hotspot Plus, two portable solar generators with storage supply, one laptop, four handheld VHF Radios, four mobile phones, one printer, and required software. This kit will be mobilized at welfare desks.



Disaster Risk Reduction

People reached: To be identified

Male:

Female:

Outcome 1: Communities in high risk areas are prepared for and able to respond to disaster

Indicators:	Target	Actual
Number of communities reached through RCRC programmes for DRR and community resilience (excluding public awareness and education campaigns)	6	to be conducted

Output 1.1: Communities take active steps to strengthen their preparedness for timely and effective response to disasters.

Indicators:	Target	Actual
Number of communities DRRM plans updated/reviewed	6	to be conducted
Number of Red Cross 143 recruited	24	to be conducted
Number of communities provided with PASSA ToT trainings	6	to be conducted

Progress towards outcomes

No update as of reporting period.

Outcome 2: Communities in disaster and crisis affected areas adopt climate risk informed and environmentally responsible values and practices

Indicators:	Target	Actual
Number of communities adopt climate risk informed and environmentally responsible approaches	6	to be conducted

Output 2.1: Contributions to climate change mitigation are made by implementing green solutions

Indicators:	Target	Actual
<i>Number of green response activities supported</i>	6	to be conducted
Progress towards outcomes		
No update as of reporting period.		
Output 2.2: Community awareness raising programmes on climate changing risks and environmentally responsible practices are conducted in target communities		
Indicators:	Target	Actual
<i>Number of communities that have implemented activities that contribute to climate change adaptation</i>	6	to be conducted
<i>Number of people reached by climate change mitigation and environmental sustainability awareness and raising campaigns</i>	20,000	to be conducted
Progress towards outcomes		
No update as of reporting period.		

Strengthen National Society		
Outcome 1: National Society capacity building and organizational development objectives are facilitated to ensure that National Societies have the necessary legal, ethical and financial foundations, systems and structures, competences and capacities to plan and perform.		
Indicators:	Target	Actual
<i>Number of National Society's branches that are well functioning (in the operation)</i>	3	3
Output 1.1.4: National Societies have effective and motivated volunteers who are protected		
Indicators:	Target	Actual
<i>Percentage of volunteers insured</i>	100	to be identified
Progress towards outcomes		
<p>PRC has prioritized three chapters to assist with early-recovery assistance namely, Albay, Cam Sur, and Catanduanes.</p> <p>A total of 494 PRC staff and volunteers have been activated and mobilized for the operation. All the volunteers involved in the operation are insured under the Membership and Accident Assistance Benefit (MAAB) of PRC.</p>		
Output 1.1.6: National Societies have the necessary corporate infrastructure and systems in place		
Indicators:	Target	Actual
<i>Number of chapter buildings are reconstructed and equipped</i>	5	1
Progress towards outcomes		
Refer Operations Update #2 for details.		

International Disaster Response		
Outcome 2.1: Effective and coordinated international disaster response is ensured		
Indicators:	Target	Actual
<i>Effective and coordinated international disaster response ensured.</i>	Yes	Yes

Output 2.1.1: Effective and respected surge capacity mechanism is maintained		
Indicators:	Target	Actual
<i>Number of RDRT member deployed for the operation</i>	4	4
Progress towards outcomes		
<p>A total of four surge persons were deployed to the operations. The cost of the surge positions was covered by the respective National Society. Finish Red Cross seconded a PRD surge and a Communication surge person. Netherlands Red Cross seconded a Shelter Cluster IM surge person. Spanish Red Cross seconded a surge IM Coordinator.</p> <p>Starting mid-March 2021, a surge field coordinator is to be deployed for three months.</p>		
Output 2.1.3: NS compliance with Principles and Rules for Humanitarian Assistance is improved		
Indicators:	Target	Actual
<i>Number of methods established to share information with communities about what is happening in the operation based on community preference.</i>	2	Yes
<i>% of complaints and feedback received responded to by the NS.</i>	100	to be conducted
<i>% of targeted families satisfied that they have access to information, feedback mechanisms and can influence the programme/response</i>	80	to be conducted
Progress towards outcomes		
Refer Operations Update #2 for details.		
Output 2.1.4: Supply chain and fleet services meet recognized quality and accountability standards		
Indicators:	Target	Actual
<i>Logistics department provides constant support to the National Society's logistics unit for replenishment and other procurements</i>	Yes	Yes
Progress towards outcomes		
<p>Logistics activities aim to efficiently manage the supply chain of relief items, including procurement, fleet, storage, and transportation to distribution sites in accordance with the requirements and aligned with standards, processes and procedures of the IFRC. The logistical support is provided by the strong logistics capacity of the PRC built in recent years, supported by an experienced IFRC CO logistics team including the logistics delegate.</p> <p>IFRC logistics initiated the procurement process to replenish the items distributed to people affected. Hygiene kits, jerry cans, mosquito nets, tarpaulins, and CGI are being procured via LPSCM APRO. All of these items have arrived in country.</p> <p>Meanwhile, blankets and sleeping mats are being procured locally. The procurement process is ongoing, and to be completed by 31 March 2021. Due to the current pandemic situation, delays are encountered in the procurement process. Challenges faced include scheduling shipments and delay in the arrival of goods in country.</p>		
Output 2.1.6: Coordinating role of the IFRC within the international humanitarian system is enhanced		
Indicators:	Target	Actual
<i>A coordinated and strategic response plan according to humanitarian minimum standards is adopted by actors in support of Government</i>	Yes	Yes
<i>Shelter actors working together without duplication of services</i>	Yes	to be identified
<i>% of shelter actors incorporating build back safer (BBS) messaging and technical assistance elements into their shelter programming</i>	100	to be identified
Progress towards outcomes		
<p>The IFRC, as part of global shelter commitment is leading the Shelter Cluster in the Philippines in support of DSWD, the lead agency in the Government of the Philippines cluster structure. The Philippines country office maintains a full-time Inter-Agency Standing Committee (IASC) shelter cluster coordinator. Furthermore, an Information Manager was deployed as surge support via the Netherland Red Cross.</p>		

The hub in Albay coordinates typhoon Goni's response, which is staffed by Catholic Relief Services (CRS) with a Hub Coordinator. In Catanduanes, the hub is being chaired by Provincial Disaster Risk Reduction Management Office (PDRRMO) and Caritas Virac. The National Cluster Coordinator from IFRC is overseeing the two coordination hubs liaising with relevant Government Authorities, sector partners, and other clusters.

The Humanitarian Needs and Priorities (HNP) developed for typhoon Goni is until the end of April 2021 targeting 60,000 people (12,000 HH). To date, the shelter cluster partners have assisted a total of 26,530 households with emergency and early recovery shelter support across the provinces of Region V. A 4w dashboard and gap analysis has been created to monitor partner's presence and shelter activities. The shelter cluster website has been set up and maintained for the response including all the information, meeting minutes, and Information Education and Communication (IEC) materials.

Outcome 2.2: The complementarity and strengths of the Movement are enhanced

Indicators:	Target	Actual
<i>Complementarity and strengths of the Movement enhanced</i>	Yes	Yes

Output 2.2.1: In the context of emergencies the IFRC, ICRC and NS enhance their operational reach and effectiveness through new means of coordination.

Indicators:	Target	Actual
<i>Movement coordination is well-established</i>	Yes	Yes

Progress towards outcomes

The PRC leads the Movement's overall response for the operations, maintaining close coordination with Movement partners in the country and providing updates. The PRC works with the IFRC, the ICRC and eight National Societies are present in the Philippines: American Red Cross, Canadian Red Cross, Finnish Red Cross, German Red Cross, Japanese Red Cross Society, Netherlands Red Cross, Spanish Red Cross, and Qatar Red Crescent Society.

Influence others as leading strategic partner

Outcome 3.1: The IFRC secretariat, together with National Societies uses their unique position to influence decisions at local, national and international levels that affect the most vulnerable.

Indicators:	Target	Actual
<i>IFRC and NS are visible, trusted and effective advocates on humanitarian issues.</i>	Yes	Yes

Output 3.1.1: IFRC and NS are visible, trusted and effective advocates on humanitarian issues

Indicators:	Target	Actual
<i>Number of communications materials produced/published</i>	90	87

Progress towards outcomes

A composite team of PRC and IFRC communications officers is working together to generate further international and national media coverage in high-value outlets building on the successful coverage profiling the work of PRC that was achieved when Super Typhoon Goni struck. IFRC Communications published four press releases and a web story for Typhoons Goni to ensure visibility of the Red Cross response efforts. The press releases were quoted in New York Times, The Guardian UK, Reuters and AP, AFP, The Straits Times, SCMP, CNN International, VOA, Deutsche Welle, Washington Post, Bangkok Post, ABC News, and interviews were made by major international media outlets like BBC, Al Jazeera, CNA, TRT World, CNBC TV and Online, Sky TV Global News, Euro News TV. IFRC AV platform (shaRED) including [photographs](#), [web](#), [videos](#). Two [testimonial video](#) were developed and disseminated widely.

IFRC Press Releases:

- [Philippines braces for the year's strongest typhoon](#)
- [Philippine Red Cross teams urgent assistance after super typhoon hits](#)
- [Villages destroyed as typhoon barrels across the Philippines](#)

For the third month anniversary of Typhoon Goni and Vamco, in photos stories published on IFRC exposure:

- <https://ifrc.exposure.co/tough-as-nails?source=share-ifrc>
- <https://ifrc.exposure.co/recovering-from-the-strongest-storm-on-earth?source=share-ifrc>

Output S3.1.2: IFRC produces high-quality research and evaluation that informs advocacy, resource mobilization and programming.		
Indicators:	Target	Actual
# of post-distribution visits to affected communities.	2	to be conducted
# of Evaluation is conducted ⁴ .	1	to be conducted
Progress towards outcomes		
No update as of reporting period.		

Effective, credible and accountable IFRC		
Outcome 4.1: The IFRC enhances its effectiveness, credibility and accountability		
Indicators:	Target	Actual
<i>Effective performance of staff supported by HR procedures</i>	Yes	Yes
Output 4.1.2: IFRC staff shows good level of engagement and performance		
Indicators:	Target	Actual
<i>Percentage compliance with PRC HR procedures</i>	100%	100%
Progress towards outcomes		
<p>PRC has been mobilizing NHQ and Chapters existing staff, Red Cross 143 volunteers, Red Cross Action Teams (RCAT134), and National Disaster Response Team's members from other Chapters as required. PRC Human Resources (HR) procedures are being applied for all deployments. PRC has recruited four staff at HQ and six project staff in the field to support the operation.</p>		
Output 4.1.3: Financial resources are safeguarded; quality financial and administrative support is provided contributing to efficient operations and ensuring effective use of assets; timely quality financial reporting to stakeholders		
Indicators:	Target	Actual
<i>Percentage of financial reporting respecting the IFRC procedures</i>	100%	100%
Progress towards outcomes		
Refer Operations Update #2 for details.		
Output 4.1.4: Staff security is prioritized in all IFRC activities		
Indicators:	Target	Actual
<i>Staff security is prioritized in all IFRC activities.</i>	Yes	Yes
Progress towards outcomes		
Refer Operations Update #2 for details.		

D. Financial Report

The appeal budget is CHF 10.82 million. As of the date of the publication of this report, the [appeal coverage](#) is 37 per cent. The expenditure as of 31 January 2021 closing is CHF 466,826. Please refer to the financial report at the end of this document for more details. (Click [here](#))

⁴ Including lessons learned workshop

Reference documents



Click for:

- [Previous Appeals and updates](#)
- [Emergency Plan of Action \(EPoA\)](#)

For further information, specifically related to this operation please contact:

In the Philippine Red Cross

- Elizabeth Zavalla, secretary general; phone: +63 2 790 2300; email: elizabeth.zavalla@redcross.org
- Leonardo Ebajo, director for disaster management services; email: leonardo.ebajo@redcross.org.ph

In the IFRC Philippines Country Office

- Robert Kaufman, head of country office; phone: +63 998 585 0794, email: robert.kaufman@ifrc.org
- Radhika Fernando, acting programme coordinator; phone: +63 998 960 6284; email: radhika.fernado@ifrc.org

In IFRC Regional Office for Asia Pacific, Kuala Lumpur

- Alexander Matheou, regional director; email: alexander.matheou@ifrc.org
- Gwendolyn Pang, deputy regional director a.i; email: Gwendolyn.pang@ifrc.org
- Necephor Mghendi, head of DCC unit; email: necephor.mghendi@ifrc.org
- Vinod Muniandy, operations coordinator; email: OpsCoord.SouthEastAsia@ifrc.org
- Siokkun Jang, logistics manager, regional logistics unit; email: siokkun.jang@ifrc.org
- Antony Balmain, regional communications manager; email: antony.balmain@ifrc.org

In IFRC Geneva

- Christina Duschl, senior officer, operations coordination; email: christina.duschl@ifrc.org
- Karla Morizzo, senior DREF officer; email: karla.morizzo@ifrc.org
- Eszter Matyeka, senior officer, DREF; email: eszter.matyeka@ifrc.org

For IFRC Resource Mobilization and Pledges support

- **In IFRC Asia Pacific Regional Office:** Alice Ho, partnership in emergencies coordinator; email: partnershipsEA.AP@ifrc.org

For Performance and Accountability support (planning, monitoring, evaluation and reporting enquiries)

- **In IFRC Asia Pacific Regional Office:** Wai Siong (Audrey) See Tho, acting PMER manager; email: audrey.seetho@ifrc.org

How we work

All IFRC assistance seeks to adhere to the **Code of Conduct** for the International Red Cross and Red Crescent Movement and Non-Governmental Organizations (NGO's) in Disaster Relief and the **Humanitarian Charter and Minimum Standards in Humanitarian Response (Sphere)** in delivering assistance to the most vulnerable. The IFRC's vision is to inspire, **encourage, facilitate and promote at all times all forms of humanitarian activities** by National Societies, with a view to **preventing and alleviating human suffering**, and thereby contributing to the maintenance and promotion of human dignity and peace in the world.

The IFRC's work is guided by Strategy 2020 which puts forward three strategic aims:



Save lives,
protect livelihoods,
and strengthen recovery
from disaster and crises.



Enable **healthy**
and **safe** living.



Promote social inclusion
and a culture of
non-violence and **peace.**

Emergency Appeal

INTERIM FINANCIAL REPORT

Selected Parameters			
Reporting Timeframe	2020/10-2021/1	Operation	MDRPH041
Budget Timeframe	2020/10-2022/11	Budget	APPROVED

Prepared on 01 Mar 2021

All figures are in Swiss Francs (CHF)

MDRPH041 - Philippines - Floods and Typhoons 2020

Operating Timeframe: 30 Oct 2020 to 30 Nov 2022; appeal launch date: 02 Nov 2020

I. Emergency Appeal Funding Requirements

Thematic Area Code	Requirements CHF
AOF1 - Disaster risk reduction	547,000
AOF2 - Shelter	4,922,000
AOF3 - Livelihoods and basic needs	3,267,000
AOF4 - Health	295,000
AOF5 - Water, sanitation and hygiene	403,000
AOF6 - Protection, Gender & Inclusion	59,000
AOF7 - Migration	38,000
SFI1 - Strengthen National Societies	229,000
SFI2 - Effective international disaster management	187,000
SFI3 - Influence others as leading strategic partners	59,000
SFI4 - Ensure a strong IFRC	814,000
Total Funding Requirements	10,820,000
Donor Response* as per 01 Mar 2021	4,028,653
Appeal Coverage	37.23%

II. IFRC Operating Budget Implementation

Thematic Area Code	Budget	Expenditure	Variance
AOF1 - Disaster risk reduction	68,926	0	68,926
AOF2 - Shelter	1,316,799	316,512	1,000,287
AOF3 - Livelihoods and basic needs	1,106,699	77,448	1,029,251
AOF4 - Health	79,703	2,102	77,601
AOF5 - Water, sanitation and hygiene	92,437	13,630	78,808
AOF6 - Protection, Gender & Inclusion	32,520	0	32,520
AOF7 - Migration	17,139	0	17,139
SFI1 - Strengthen National Societies	247,202	0	247,202
SFI2 - Effective international disaster management	56,070	7,261	48,808
SFI3 - Influence others as leading strategic partners	26,625	3,963	22,662
SFI4 - Ensure a strong IFRC	663,715	45,909	617,806
Grand Total	3,707,836	466,826	3,241,010

III. Operating Movement & Closing Balance per 2021/01

Opening Balance	0
Income (includes outstanding DREF Loan per IV.)	3,966,534
Expenditure	-466,826
Closing Balance	3,499,708
Deferred Income	0
Funds Available	3,499,708

IV. DREF Loan

* not included in Donor Response	Loan :	749,974	Reimbursed :	749,974	Outstanding :	0
----------------------------------	--------	---------	--------------	---------	----------------------	----------

Emergency Appeal

INTERIM FINANCIAL REPORT

Selected Parameters			
Reporting Timeframe	2020/10-2021/1	Operation	MDRPH041
Budget Timeframe	2020/10-2022/11	Budget	APPROVED

Prepared on 01 Mar 2021

All figures are in Swiss Francs (CHF)

MDRPH041 - Philippines - Floods and Typhoons 2020

Operating Timeframe: 30 Oct 2020 to 30 Nov 2022; appeal launch date: 02 Nov 2020

V. Contributions by Donor and Other Income

Opening Balance							0
Income Type	Cash	InKind Goods	InKind Personnel	Other Income	TOTAL	Deferred Income	
Austrian Red Cross	108,080				108,080		
British Red Cross (from British Government*)	884,679				884,679		
Czech Government	50,450				50,450		
Finnish Red Cross	107,571				107,571		
Japanese Red Cross Society	120,215				120,215		
New Zealand Government	138,037				138,037		
On Line donations	559				559		
Red Cross of Monaco	48,539				48,539		
Spanish Government	176,605				176,605		
Swedish Red Cross	1,083,786				1,083,786		
Swiss Government	500,000				500,000		
The Canadian Red Cross Society (from Canadian Gov	110,669				110,669		
The Netherlands Red Cross (from Netherlands Govern	637,346				637,346		
Total Contributions and Other Income	3,966,534	0	0	0	3,966,534	0	
Total Income and Deferred Income					3,966,534	0	