

Emergency Plan of Action (EPoA) Bangladesh: Cox's Bazar Camp Settlement Fire

DREF Operation n°:	MDRBD026	Glide n°:	FR-2021-000027-BGD
Date of issue:	26 March 2021	Expected timeframe:	3 months
		Expected end date:	30 June 2021
Category allocated to the disaster or crisis: Orange			
DREF allocated: CHF 321,246			
Total number of people are affected:	55,000 (includes 563 injured)	Number of people to be assisted:	27,500
Districts affected:	Cox's Bazar	Camp targeted:	8E, 8W, 9, 10
Host National Society presence (no. of volunteers, staff, branches): Bangladesh Red Crescent Society (BDRCS) – Over 300 Red Crescent Youth volunteers and staff mobilized, and 775 CPP volunteers (residents in camps 8E, 8W, 9 and 10, and neighboring camps)			
Red Cross Red Crescent Movement partners actively involved in the operation: IFRC, ICRC and in-country Partner National Societies comprising the American Red Cross, British Red Cross, Canadian Red Cross, Danish Red Cross, German Red Cross, Japanese Red Cross Society, Swedish Red Cross, Swiss Red Cross, Qatar Red Crescent, Turkish Red Crescent			
Other partner organizations actively involved in the operation: Government of Bangladesh (this includes the Ministry of Disaster Management and Relief, as well as the Office of the Refugee Relief and Repatriation Commissioner), UN Resident Coordinator (RC) office, UN agencies, INGOs and NGOs.			

A. Situation analysis

Description of the disaster

On 22 March 2021, a massive fire swept through the camp settlement in Cox's Bazar, Bangladesh, destroying shelters and facilities and endangering lives across four camps. So far, 11 casualties have been reported, and 55,000 people have been displaced. According to data shared by the camp authority, a total of 563 people from the affected camps have been injured and 339 are missing. It is understood that there are approximately 10,000 damaged shelters. Further reference information regarding this event can be found in [Situation Report #2](#) and [Situation Report #3](#), in addition to the [ISCG Press release](#).



The fire which began at 3pm on 22 March was finally put out by 1.00am the next day. (Photo: BDRCS)

The fire originated from block D in Camp 8W at about 3.00pm local time on 22 March 2021. The frequent wind flow made the fire spread quickly to other camps comprising camps 8E, 9, and 10, completely razing a huge amount of infrastructure – these included shelters, mosques, community centres, learning centres, service centres, shops, LPG (liquefied petroleum gas) storage sheds and Camp-in-Charge (CiC) offices. The fire was put out in three camps (8E, 8W and 9) around 9.45 PM the same day (22 March 2021), and at 1:00 am on 23 March in Camp 10, by the Fire Service and Civil Defence (FSCD) teams with support from the Cyclone Preparedness Programme (CPP) volunteers and BDRCS staff (Population Movement Operation (PMO) and Myanmar Refugee Relief Operation¹). Due

¹ The MRRO is a long-standing operation undertaken jointly by BDRCS and UNHCR.

to the threat of the fast-moving fire, families living in seven adjacent camps were also evacuated to safer ground. Click [here](#) to see the affected areas.

According to the Flash Update issued by the ISCG Secretariat, among the essential facilities impacted by the fire are the IOM primary healthcare clinic, MSF clinic, Turkish hospital and LPG distribution points. No BDRCS facility or infrastructure has been affected as a relatively small amount of programming is undertaken in the affected areas.

While there has been a history of several fires in the camp settlement in past times including two incidents in January this year, the intensity and scale of this latest fire is unprecedented. Cramped conditions in the severely congested settlement are believed to have contributed to the quick escalation of the fire.

The camp settlement in Cox's Bazar is home to about 877,000 displaced people from Rakhine State in Myanmar who crossed the border into Bangladesh in 2017. The camps are the programming area of a multitude of humanitarian actors including the UN and the Bangladesh Red Crescent Society who are providing a range of humanitarian services to the camp population as well as a smaller population of local communities living on the periphery of the settlement, and who have been adversely affected by the large influx of displaced people.

Summary of the current response

Overview of host National Society response action

As soon as the fire broke out, BDRCS staff on the ground such as camp focal points and community mobilisers worked to evacuate people to safer ground, and to help with the use of two mounted fire-fighting machines mobilised from the Myanmar Refugee Relief Operation (MRRO) managed jointly by BDRCS and UNHCR. Also among the first responders were some 775 Cyclone Preparedness Programme (CPP) volunteers comprising camp residents trained in preparing for and responding to cyclones and other emergencies - these CPP volunteers have reported to have been instrumental in saving lives in the fire. They are part of 3,400 trained CPP volunteers in all 34 camps in the settlement (100 volunteers per camp) who have provided much needed support in responding to previous emergencies such as cyclones, monsoon rains and fires, as well as dissemination of key messaging on preventing and reducing the spread of COVID-19. The CPP is a joint initiative of the Bangladesh government and BDRCS², and is part of disaster risk reduction programming under the existing Population Movement Operation. In this connection, BDRCS serves as chair of the Technical Committee on Cyclone Preparedness covering both camp and host communities - this committee sits under the umbrella of the ISCG CwC (Communications with Communities) Working Group.

BDRCS also activated its Emergency Operation Centre (EOC) at the PMO office in Cox's Bazar, soon after news of the fire broke out, to collect information from the ground and coordinate with the Government, the UN-headed Inter Sector Coordination Group (ISCG) and other humanitarian actors. The National Society also continues to participate in CiC (Camp-in-Charge) and individual programme sector coordination meetings.

Other action taken by BDRCS includes the following:

- A BDRCS team has been deployed to undertake assessments in coordination with other actors on the ground. The assessment team is to share a damage and incident report on shelter; water, sanitation and hygiene (WASH), health and other needs, apart from casualties.
- 775 Cyclone Preparedness Programme (CPP) / Disaster Management Unit camp volunteers have been mobilized in the affected areas to extinguish the fire, relocate people to safe ground, provide first aid, restore family links, and are currently working to provide dry food to affected families. This is being undertaken under the guidance of Site Management Support (SMS) agencies of the camps.
- 600 tents received from the camp authority comprising the Office of the Refugee Relief and Repatriation Commissioner (RRRC) are being installed. 110 staff and volunteers are supporting the erection of tents and clearing debris and bringing out dead bodies.
- One ambulance from the BDRCS field hospital (located in Camp 7) is on the ground in the affected area, for emergency health support. The hospital is also ready to attend any injured. Community-Based Health and First Aid (CBHFA) teams are engaged in camp 8E.
- 1,800 surgical masks and 1,800 pairs of hand gloves have been handed over to IOM.

Overview of Red Cross Red Crescent Movement actions in country

On 23 March 2021, an emergency meeting between BDRCS, ICRC, IFRC and in-country Partner National Societies, was held at the office of BDRCS Head of Operation (PMO, Cox's Bazar). RCRC partners expressed their solidarity and assured the National Society of their full support to implement any collaborative action.

Immediate commitments made by partners include ready stock of household items (tarpaulins, hygiene kits, mats etc) from the PMO, the Myanmar Refugee Relief Operation, and the German Red Cross. The Qatar Red Crescent and the

² This is jointly supported by IFRC and the American Red Cross.

Turkish Red Crescent have committed to support ready food. The Swiss Red Cross and Swiss Embassy will come up with additional support.

The ICRC is on standby to provide dead body bags and food support and will also work with the BDRCS local Cox's Bazar unit (equivalent to a branch) and PMO on Restoring Family Links (RFL) activities.

Overview of non-RCRC actors' actions in country

The office of the Refugee Relief and Repatriation Commissioner (RRRC) is the camp authority which leads the coordination among humanitarian actors in Cox's Bazar. The RRRC chief was on the ground in the camp area yesterday soon after the fire broke out. The RRRC held a briefing on the afternoon of 23 March on the immediate needs in the camp, and this DREF Emergency Plan of Action was guided by these briefing outcomes.

In view of the severity of the incident, the Secretary of the Ministry of Disaster Management and Relief (MODMR) visited the affected area on 23 March and held meetings with humanitarian actors in the camp and in Cox's Bazar.

As soon as the fire broke out, the various humanitarian actors on the ground, including Site Management Support agencies, as well as agencies heading the various programme clusters and supporting actors, rallied together in coordination with the respective Camp In-Charge (camp authority for an individual camp) to put out the fire and evacuate people to safety.

The ISCG Secretariat issued a flash update on the 23 March early in the morning via an informal email, details of which are summarized in the [ISCG Press Release](#). It shared that amidst nightfall and the process of moving people to safety last night, various aid agencies had already begun to carry out assessments on the damage in the camps.

Needs analysis, targeting, scenario planning and risk assessment

Needs analysis

BDRCS and IFRC leadership have attended coordination meetings with the MODMR and RRRC, as well as IOM which functions as the key camp management agency for three of the affected camps. During these meetings, the ISCG shelter sector and IOM clearly articulated that 11,000 households are in need of shelter support. Of this figure, 9,508 have a direct need for shelter, while an additional 1,492 households who have been indirectly impacted (their homes had to be deliberately destroyed to form a firewall to prevent the fire from spreading) are also in need of support. It was also agreed during these discussions that as IOM would cover the needs of 5,500 households, BDRCS (with IFRC support) would cover the remaining 5,500. It is on this basis that this DREF request seeks funding to support a maximum of 5,500 households (27,500 people).

Other immediate needs shared by camp authorities include food and non-food items, basic needs; water, sanitation and hygiene promotion (WASH), health and psychosocial support, and protection, gender and inclusion (PGI).

For existing assessment data, please refer to the BDRCS [Situation Report #3](#) (Page 1 & 2), [Situation Report #2](#) (Page 2), [Situation Report #4](#) and as well as on the [ISCG Press Release](#) dated 23 March 2021.

Findings of an inter-agency joint needs assessment underway in the camp area now will be shared as soon as it is available. It should be noted that this assessment is being undertaken by the camp management agency³ (IOM) and Camp-in-Charge (RRRC) of the affected camps with the respective sector leads in these camps, in line with coordinating structures and assessment mechanisms already agreed upon with the ISCG. As BDRCS (with IFRC and other RCRC partners) is not actively present in the affected camps, the National Society will act as an implementing agency in support of the RRRC and IOM. Figures in the tables below extracted from BDRCS Situation Report No.4.

Damage and Casualties Information (Camp 8E, 8W, 9 and 10)	
Death	11
Injured	563
Missing	339
Shelter damaged/destroyed	11,000 (9,347 fully destroyed by fire, 161 partially destroyed by fire, remainder 1,492 shelters destroyed not by fire but deliberately damaged to create a fire wall to prevent fire from spreading further)
Affected population	55,000 people

Source of information: SMSD and RRRC press briefing

³ Each of the 34 camps in the camp settlement has a camp management agency also known as Site Management Support (SMS) agencies. IOM is the SMS agency in three of the four affected camps.

Camp-Wise Damage Information					
Camp	Affected Blocks	Facility Damaged	Damaged Shelter	Relocated people	Affected people
8E	Block A and C are affected	346 facilities	Fully damaged: 847	1,151 family relocated to safe ground	6,589 people affected
8W	Block A, B, C, D are affected	301 facilities	Fully damaged: 2,373	2,138 family relocated to safe ground	11,153 affected people
9	Block A, B, C, D, E, F, G are affected	962 facilities	Fully damaged: 6,127 Partially damaged: 161		27,380 affected people.

Source of information: Site Management Support (SMS) Agency, SMSD, ISCG, CPP camp volunteers, CPP camp focal points, Supervisors, CPP Coordinator who are still on the ground.

Note that data on the fourth affected camp (Camp 10) is not included as it is the least-affected camp

A brief description of sectoral needs follows:

Livelihoods and basic needs

There is an immediate need for food and water to be provided to the displaced communities (hence the inclusion of the provision of food and bottled water as part of this DREF operation). It should be noted however that the longer-term need for food and water continues to be met by relevant agencies, particularly WFP, as part of the ongoing population movement operation.

Shelter and non-food items

A large number of shelters have been destroyed (11,000), with people evacuated to neighboring camps. As such, emergency shelter assistance (household shelter items such as tarpaulins, mats, tents and clothes) is needed.

Water, Sanitation and Hygiene (WASH)

Water supply networks have been damaged, while latrines have been razed to the ground. Hygiene items stored by camp residents have also been destroyed.

The focus of interventions for this DREF operation will be the provision of hygiene kits and buckets. Other WASH needs (damaged water points) are being attended to by other actors, such as RRRC and IOM. Should there still be WASH gaps in the future, RCRC will aim to fill these with other funding opportunities (non-DREF).

Health and mental health and psychosocial support

Ambulance services will be on standby. Other health needs are being attended to by other actors. Most recent information reflects that the BDRCS field hospital has treated one burnt patient and 40 affected people received treatment at the BDRCS health post in Camp 8E. Overall, as some 500 injured people have already been provided with first aid in the first few days of this emergency, first aid is not considered as an intervention for this DREF operation.

The camp population which endured unspeakable trauma when fleeing from their homes in Myanmar to Bangladesh a few years ago, have once again experienced tragedy. As such, psychological first aid (PFA) will comprise an integral intervention. This will include provision of support to patients at the BDRCS field hospital and health posts. At the time of preparation of this plan of action, some 240 people had received PFA support from trained BDRCS staff at these health facilities.

Protection, Gender and Inclusion (PGI)

As a result of this fire, it is likely that certain marginalized groups or individuals within the camp community will be even more vulnerable – hence the need for BDRCS with IFRC to continue to extend services that are being provided under the ongoing PMO. This includes making referrals for vulnerable individuals to case management actors, as well as the distribution of dignity kits. There are several designated case management actors still active throughout the settlement of 34 camps. Referrals by BDRCS to these actors are a regular activity under the PMO.

Restoring Family Links (RFL) services will be provided with ICRC support.

Targeting

This plan of action will support approximately 27,500 people, comprising about 50 per cent of 55,000 people targeted to be reached jointly by BDRCS and IOM in reference to emergency shelter needs. This reach covers the total affected population, mainly considered as displaced, which stands at 55,000 people, according to RRRC data. In reference to targeting for interventions other than shelter, these involve a smaller number of beneficiaries all of whom are part of the same pool of 5,500 households (27,500 people) targeted for shelter. For more information, see the Needs Analysis section. In reference to other interventions included in this EPoA, selection of beneficiaries will be based on vulnerability

criteria employed currently for the Population Movement Operation and in line with guidance from various ISCG programme sectors.

Scenario planning

Scenario	Humanitarian consequence	Potential response
<u>Most likely situation:</u> This fire tragedy is not further exacerbated.	Significant needs of the affected people will be met.	this DREF EPoA is implemented in a timely manner, thus meeting the needs of targeted communities.
<u>Worst situation:</u> Other emergencies (cyclones, monsoon rains) occur in the near future.	More needs arise among vulnerable communities. The RCRC and other humanitarian actors are unable to fill all gaps with the ongoing operation.	Depending on the needs, revise the existing PMO, request for a second allocation of this DREF operation or request a new DREF operation
<u>Compounding Factors:</u> COVID- 19 transmission risk.	Increased infection and spread of COVID-19.	Duty of Care to staff and volunteers.

Operation risk assessment

The first cyclone season of the year is anticipated in the months of April to May, while the monsoon rains are expected to begin in June. These are seasonal risks which will need to be taken into account, including potential delays to some aspects of programming for this DREF operation. The Cyclone Early Warning Early Action and Scenario-Based Response Plan for 2020 and 2021 is in place. This comprises the regular training and mobilization of 3,400 CPP volunteers - the volunteers are 100 camp residents in each of the 34 camps, trained under the Cyclone Preparedness Programme (CPP) run jointly by the Bangladesh govt & BDRCS with IFRC & American RC support. These volunteers have been instrumental in responding to past cyclones, monsoon rains & other emergencies. Early Warning Early Action kits have already been replenished for the upcoming cyclone season.

The risk of COVID-19 also remains an ongoing risk consideration and as such, the usual safety protocols adhered to for both the ongoing operations (PMO and COVID-19) will continue to be observed. This includes the observance of Duty of Care owed to staff and volunteers. Measures in this connection include:

- Daily disinfection of the office building, vehicles and compound.
- The regular supply of face masks to BDRCS/IFRC staff and BDRCS volunteers.
- Daily monitoring of staff health (IFRC, BDRCS and PNS) and putting in place measures such as requiring staff to quarantine themselves while waiting for test results or if a team member had tested positive for COVID-19.
- The continued provision of updates to staff on latest government advisories concerning the COVID-19 situation and the related movement of people.

B. Operational strategy

Overall operational objective

The overall objective of the operation is to meet the immediate needs of 27,500 people displaced by the fire.

It is intended that existing stock comprising tarpaulins (11,000 units) and hygiene top-up kits (5,000 units) will be replenished with funding from this operation. Mosquito nets and buckets from existing stock will also be utilised – however, these will not need to be replaced.

Summary of planned key activities

Sector	Activities	Target
Livelihood and basic needs	Procurement and distribution of ready-to-eat food (bread, molasses, biscuits, puffed rice, peanuts) and bottled water	5,000 people
Shelter & non-food items (NFI)	Procurement and distribution of basic household items (tarpaulins, mosquito nets)	27,500 people
WASH	Procurement and distribution of hygiene top-up kits, distribution of buckets	12,500 people
Health & psychosocial support	Provision of ambulance services	NA
	Provision of psychological first aid for fire survivors	NA
PGI	Referrals of protection cases to case management actors	NA
	Procurement & distribution of protection items (dignity kits which contains items such as slippers, underwear, towels, sanitary pads, torchlight, face masks)	2,000 people

Community engagement and accountability (CEA)

The CEA channels of engagement employed in the ongoing PMO and COVID-19 response operations will be utilized.

Logistics & supply chain management

Existing stock of tarpaulins and hygiene top-up kits as part of the ongoing Population Movement Operation will be mobilized for this fire response. These goods will be replenished with funding received for this DREF operation – international procurement will be undertaken for the tarpaulins, while hygiene top-up kits will be procured locally through an existing framework agreement used for the PMO. In addition, existing stock of mosquito nets and buckets will also be mobilized – however, these will not need to be replenished.

Human resources

It is envisaged that BDRCS will rely on Red Crescent Youth mobilized by the local unit (branch) in Cox's Bazar, along with NDRT personnel, community mobilizers and camp focal persons (staff who work in the camps) and the multitude of trained camp residents comprising the CPP volunteers or others trained in other sector interventions. Also providing support will be key programming staff of BDRCS based in the PMO office in Cox's Bazar. Designated staff (logistics and coordination functions) for this operation will be designated by the National Society from existing human resources.

Communication

Emergency communications media materials such as press releases, key messages and audio-visual materials are being prepared to highlight the needs of this operation. They will be shared regularly with National Societies globally through IFRC communications channels.

Other support services

Other support services such as PMER, Finance and Administration, and Security will also be extended to this operation and will be derived from existing PMO resources.

C. Detailed Operational Plan



Shelter

People targeted: 27,500
Requirements (CHF): 204,096

Needs analysis: Refer to need analysis section of this EPoA

Population to be assisted:

- 27,500 fire-affected households will be assisted with basic household items.
 - 11,000 tarpaulins- 2 per household and 11,000 mosquito nets – 2 per household

P&B Output Code	Shelter Outcome 1: Communities in disaster and crisis affected areas restore and strengthen their safety, well-being and longer-term recovery through shelter and settlement solutions	# of reached people with safe and adequate shelter and settlements. (Target: 27,500)						
	Shelter Output 1.1: Shelter and settlements and basic household items assistance is provided to the affected families.	# of households provided with basic shelter items to have a space that meet the minimum living conditions (Target: 5,500)						
	Activities planned	Month	1	2	3	4	5	6
AP005	Procurement and distribution of basic household items: 11,000 tarpaulins – 2 units per HH; Distribution of 11,000 mosquito nets (existing stock - <i>note that mosquito nets do not need to be replenished</i>) – 2 units per HH		x	x	x			
AP005	Transportation – distribution cost		x	x	x			
AP005	Post-distribution monitoring		x	x	x			



Livelihoods and basic needs

People targeted: 5,000
Requirements (CHF): 38,340

Needs analysis: Refer to need analysis section of this EPoA.

Population to be assisted:

- 5,000 people (1,000 households) will be assisted with ready-to-eat food packs with consideration of local context and need in the first week of the operation.

P&B Output Code	Outcome 1: Communities, especially in disaster and crisis affected areas, restore and strengthen their livelihoods	% of targeted household that have emergency food and cash to meet their survival threshold (Target: 100%)						
	Livelihoods and basic needs Output 1.2: Basic needs assistance for livelihoods security including food is provided to the most affected communities	# of people reached with food assistance (Target: 5,000)						
	Activities planned	Month	1	2	3	4	5	6
AP009	Procurement and distribution of 7,000 packs of 'ready to eat' (bread, molasses, biscuit, puffed rice, pea nuts) – for 1 week.		x	x	x			
AP009	Transportation (distribution and labor cost)		x	x	x			



Water, sanitation and hygiene

People targeted: 12,500

Requirements (CHF): 17,040

Needs analysis: Refer to the need analysis section of this EPoA.

Population to be assisted:

- Hygiene top-up kits and buckets will be distributed to those affected by the fire incident.

P&B Output Code	Outcome 1: Immediate reduction in risk of waterborne and water related diseases in targeted communities	# of people reached with WASH services (Target: 12,500)						
	WASH Output 1.5: Hygiene-related goods (NFIs) which meet Sphere standards and training on how to use those goods is provided to the target population	# of people provided with a set of essential hygiene items (Target: 12,500)						
	Activities planned	Month	1	2	3	4	5	6
AP030	Distribution and replenishment of 5,000 hygiene top-up kits for 12,500 people (2,500 families) – 2 per household. Distributions of 25,000 buckets for 12,500 people (2,500 families) - 2 per person. 1 unit of each item to be distributed first, followed by a second round of identical distributions after 15 days. (Note: buckets do not need to be replenished)		x	x	x	x		



Protection, Gender and Inclusion

People targeted: 2,000

Requirements (CHF): 42,600

Needs analysis: Refer to need analysis section of this EPoA.

Population to be assisted:

This operation will assist vulnerable individuals with dignity kits.

P&B Output Code	PGI Outcome 1: Communities identify the needs of the most vulnerable and particularly disadvantaged and marginalized groups, as a result of inequality, discrimination and other non-respect of their human rights and address their distinct needs	<i>Does the operation demonstrate evidence of addressing the specific needs to ensure equitable access to disaster response services? (Target: yes)</i>					
	Inclusion and Protection Output 1.1: NS programmes improve equitable access to basic services, considering different needs based on gender and other diversity factors.	<i>Is SADD data collected for analysis (Target: Yes) # of targeted people received dignity kits (Target:2,000)</i>					
	Activities planned Month	1	2	3	4	5	6
AP031	Organize orientation for staff and volunteers on the PGI minimum standard	x	x	x			
AP031	Collection and analysis of sex-age and disability-disaggregated data (SADD)	x	x	x			
AP031	Child protection, disability inclusion and anti-trafficking referral service	x	x	x			
AP031	Procurement and distribution of protection items (2,000 dignity kits – 1 set per person)	x	x	x			



Health

People targeted: NA
Requirements (CHF): NA

Needs analysis: Refer to need analysis section of this EPoA.

Population to be assisted: Field hospital services will be available, while psychological first aid will also be provided.

P&B Output Code	Health Outcome 6: The psychosocial impacts of the emergency are lessened						
	Health Output 6.1: Psychosocial support provided to the target population as well as to RCRC volunteers and staff	<i># of people reached with psychosocial support (Target: TBC)</i>					
	Activities planned Month	1	2	3	4	5	6
AP023	Field hospital services	x	x	x			
AP023	Provide psychological first aid (PFA) for the survivors	x	x	x			
AP023	Distribution of PSS materials	x	x	x			
AP023	PSS for staff and volunteers	x	x	x			
AP023	COVID-19 safe practices	x	x	x			

Strategies for Implementation

Requirements (CHF): 19,170

P&B Output Code	S1.1: National Society capacity building and organizational development objectives are facilitated to ensure that National Societies have the necessary legal, ethical and financial foundations, systems and structures, competences and capacities to plan and perform	<i># of volunteers and staffs covered under Insurance (Target: TBC)</i>					
	Output S1.1.4: National Societies have effective and motivated volunteers who are protected						
	Activities planned Month	1	2	3	4	5	6
AP040	Provision of insurance to volunteers and staffs to be deployed in the response operations	x	x	x	x	x	x
P&B Output Code	Output S1.1.6: National Societies have the necessary corporate infrastructure and systems in place	<i># of NDRT/NDWRT/volunteers/staffs mobilized (Target: TBC) # of volunteers and staff oriented and trained (Target: TBC) Exit survey and PDM conducted (Target: Yes).</i>					
	Activities planned Month	1	2	3	4	5	6
AP040	Orientation on needs assessment, fraud and corruption prevention, prevention and response to sexual exploitation and abuse (PSEA), PGI, CEA, PDM and exit survey for volunteers and staffs	x	x	x	x		
AP040	Ensure CEA through establishing feedback response mechanism and using BDRCS hotline	x	x	x	x		
AP040	Mobilization of NDRT, NDWRT, volunteers and staffs	x	x	x	x		
AP040	Conduct exit survey, post-distribution monitoring and evaluation						
AP040	Provide sectoral technical training and orientation for volunteers and staffs	x	x	x	x	x	x
P&B Output Code	Outcome S2.1: Effective and coordinated international disaster response is ensured	<i>Engage with other humanitarian actors for coordinated humanitarian intervention. (Target: Yes - Inter Agency)</i>					
	Output S2.1.6: Coordinating role of the IFRC within the international humanitarian system is enhanced	<i>Regular coordination meeting conducted (Target: Yes)</i>					
	Activities planned Month	1	2	3	4	5	6
AP049	IFRC country office supports NS in coordinating with other humanitarian actors, relevant clusters and working groups on a regular basis.	x	x	x	x	x	x
P&B Output Code	Output S2.1.3: NS compliance with Principles and Rules for Humanitarian Assistance is improved	<i>CEA mainstreamed in operation (Target: Yes)</i>					
	Activities planned Month	1	2	3	4	5	6
AP084	Ensure community engagement and accountability	x	x	x	x	x	x
P&B Output Code	Outcome S3.1: The IFRC secretariat, together with National Societies uses their unique position to influence decisions at local, national and international levels that affect the most vulnerable.	<i>The IFRC secretariat, together with National Societies uses their unique position to influence decisions at local, national and international levels that affect the most vulnerable (Target: Yes)</i>					
	Output S3.1.2: IFRC produces high-quality research and evaluation that informs advocacy, resource mobilization and programming.	<i># of assessment done for needs, capacities and gaps (Target: 1) # of lessons learned workshop conducted (Target: 1) # of evaluation conducted (Target: 1)</i>					

	Activities planned	Month	1	2	3	4	5	6
AP055	Assessment of needs, capacities and gaps as part of a multi-sectoral assessment		x	x	x	x	x	x
AP055	Remotely orienting volunteers on communications		x	x	x	x	x	x
AP055	Producing communications materials including content for social media		x	x	x	x	x	x
AP055	Lessons learned workshop							x
P&B Output Code	Outcome S4.1: The IFRC enhances its effectiveness, credibility and accountability	<i>IFRC extends appropriate technical support (Target: Yes)</i>						
	Output S4.1.2: IFRC staff shows good level of engagement and performance	<i>% of compliance with IFRC HR procedures (Target: 100%)</i>						
	Activities planned	Month	1	2	3	4	5	6
AP063	Ensure IFRC staff are working in close coordination with BDRCS and provide technical assistance to implement the operation.		x	x	x	x	x	x

Funding Requirements

International Federation of Red Cross and Red Crescent Societies

*all amounts in
Swiss Francs
(CHF)*

DREF OPERATION

Bangladesh: Fire in Camp Settlement

23/3/2021

Budget by Resource

Budget Group	Budget
Shelter - Relief	165,000
Food	35,000
Water, Sanitation & Hygiene	15,000
Other Supplies & Services	40,000
Relief items, Construction, Supplies	255,000
Storage	12,000
Distribution & Monitoring	2,000
Transport & Vehicles Costs	3,600
Logistics, Transport & Storage	17,600
National Society Staff	10,500
Volunteers	11,039
Personnel	21,539
Travel	1,500
Office Costs	6,000
General Expenditure	7,500
DIRECT COSTS	301,639
INDIRECT COSTS	19,607
TOTAL BUDGET	321,246

Reference documents



Click here for:



For further information, specifically related to this operation please contact:

In the Bangladesh Red Crescent Society

- Md. Feroz Salah Uddin, secretary general, phone: +880 1811 458 500; email: secretarygeneral@bdracs.org
- Md. Mijanur Rahman, director, disaster response; phone: +880 1811 458 22; email: mdmijanur.rahman@bdracs.org
- M. A. Halim, head of operation, Cox's Bazar; phone: +880 1811 145 8510; email: halim.ma@bdracs.org

In the IFRC Bangladesh country office

- Sanjeev Kumar Kafley, head of delegation a.i., Bangladesh; phone: +880 1794 581 877; email: sanjeev.kafley@ifrc.org
- Hrusikesh Harichandan, head of sub-delegation, Cox's Bazar; phone: +880 1841 203 632; email: hrukesh.harichandan@ifrc.org

In the IFRC Asia Pacific Regional Office, Kuala Lumpur

- Alexander Matheou, regional director; email: alexander.matheou@ifrc.org
- Gwendolyn Pang, deputy regional director a.i.; email: gwendolyn.pang@ifrc.org
- Andreas Weissenberg, acting head of DCC unit; email: andreas.weissenberg@ifrc.org
- Tarsilla Lehmann, operations coordinator; email: opsCOORD.southasia@ifrc.org
- Siokkun Jang, logistics manager; email: siokkun.jang@ifrc.org
- Antony Balmain, communications manager; email: antony.balmain@ifrc.org

For IFRC Resource Mobilization and Pledges support

- **In IFRC Asia Pacific Regional Office:** Alice Ho, partnerships in emergencies coordinator; email: PartnershipsEA.AP@ifrc.org

For Performance and Accountability support (planning, monitoring, evaluation and reporting enquiries)

- **In IFRC Asia Pacific Regional Office:** Wai Siong See Tho, acting PMER manager; email: audrey.seetho@ifrc.org

In IFRC Geneva

- Christina Duschl, senior officer, operations coordination; email: christina.duschl@ifrc.org
- Eszter Matyeka, senior officer, DREF; email: eszter.matyeka@ifrc.org
- Karla Morizzo, senior officer, DREF; email: karla.morizzo@ifrc.org

How we work

All IFRC assistance seeks to adhere to the **Code of Conduct** for the International Red Cross and Red Crescent Movement and Non-Governmental Organizations (NGO's) in Disaster Relief and the **Humanitarian Charter and Minimum Standards in Humanitarian Response (Sphere)** in delivering assistance to the most vulnerable. The IFRC's vision is to inspire, **encourage, facilitate and promote at all times all forms of humanitarian activities** by National Societies, with a view to **preventing and alleviating human suffering**, and thereby contributing to the maintenance and promotion of human dignity and peace in the world.

The IFRC's work is guided by Strategy 2020 which puts forward three strategic aims:



Save lives,
protect livelihoods,
and strengthen recovery
from disaster and crises.



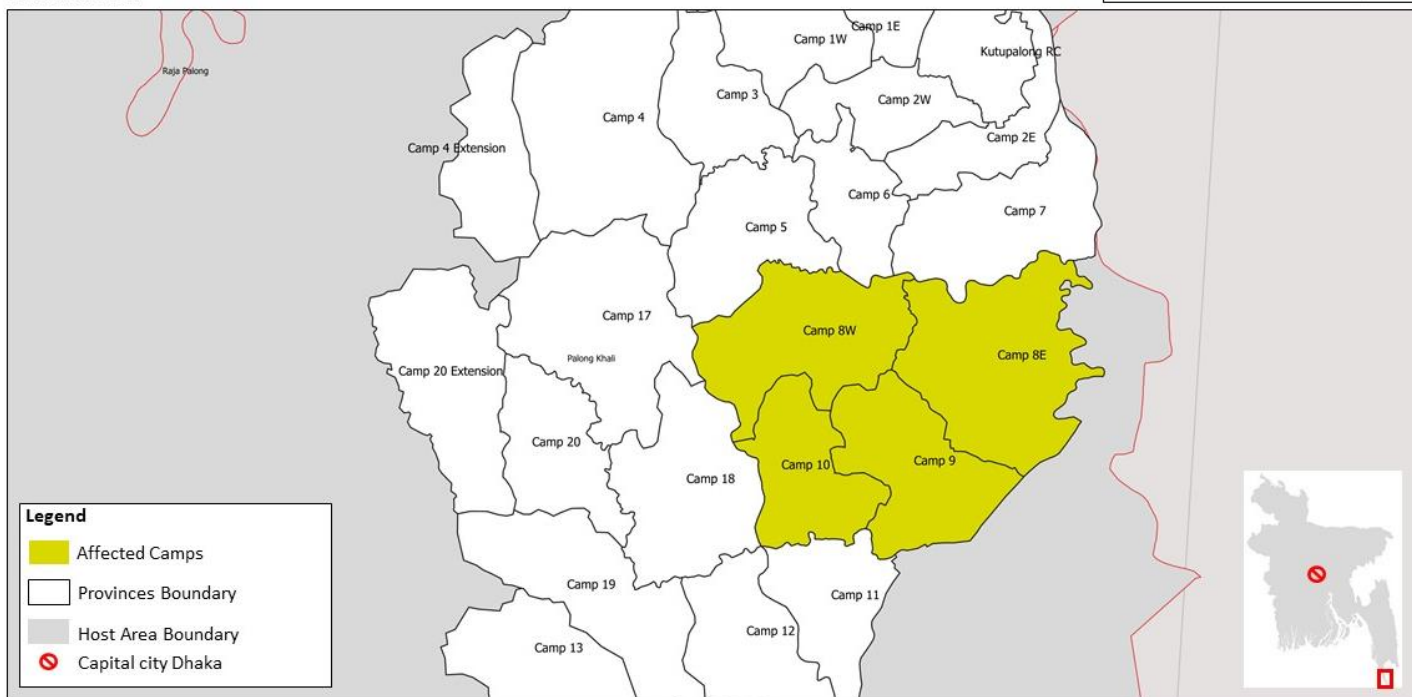
Enable **healthy**
and **safe** living.



Promote **social inclusion**
and a culture of
non-violence and **peace**.



Bangladesh: Fire in the camp settlement
Emergency Plan of Action (EPoA)
23 March 2021



* The maps used do not imply the expression of any opinion on the part of the International Federation of Red Cross and Red Crescent Societies or National Societies concerning the legal status of a territory or of its authorities.
* Map data source: EOC department, Population Movement Operation, BDRCS, IFRC

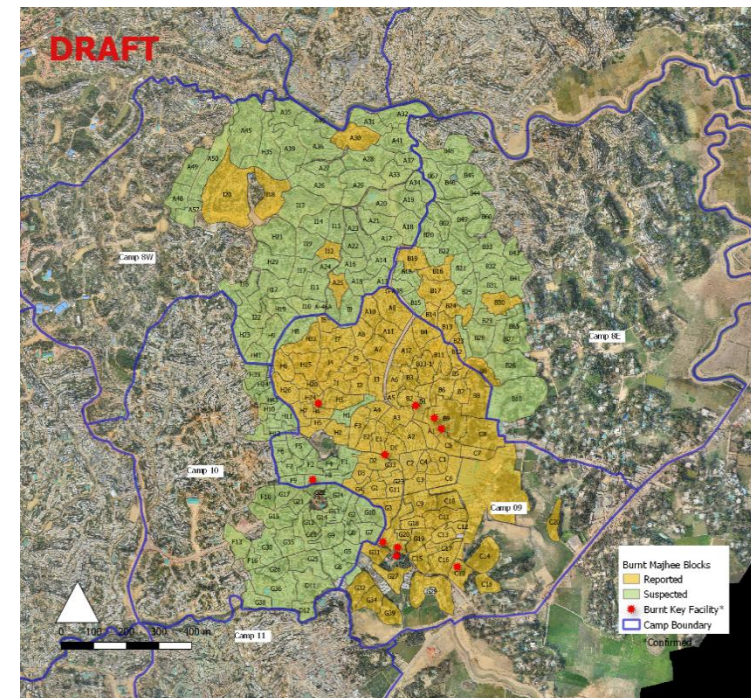
Bangladesh Red Crescent Society (BDRCS)
Emergency Operation Centre (EOC)
Situation Report-02 As of 11:00 AM (23rd March 2021)
Fire incident in Cox's Bazar camp settlement

I. Situation background

A fire has swept through a sprawling camp community in Cox's Bazar, Bangladesh, destroying shelters, facilities and endangering lives. So far, 12 casualties have been reported. So far, a total of 2,803 families (11,624 individuals) have been relocated to other camps. A total of 142 children and 36 adults are reported missing from the affected camps.

The fire originated from block D in Camp 8W at about 3pm on 22 March 2021. The frequent wind flow made the fire spread quickly to other camps comprising camps 8E, 9, and 10, completely razing a huge amount of infrastructure – these included shelters, mosques, community centres, learning centres, service centres, learning facilities, shops, LPG storage sheds and Camp-in-Charge (CiC) offices. The fire was put out in three camps (8E, 8W & 9) around 9.45 PM the same day (22 March 2021), and at 1:00 AM on 23rd March in Camp 10, by the Fire Service and Civil Defense (FSCD) teams with support from CPP volunteers and BDRCS staff (Population Movement Operation and Myanmar Refugee Relief Operation) and fully controlled in after 1:00 AM on 23rd March.

Camps affected by fire



Source of Map: IOM

2. Damage Information (Initially verified)

Camp	Blocks/sub-block affected/burnt	Facility Damaged	Damaged Shelter	Relocated people	Affected people (Tentative data)
8E	21 sub-blocks affected	27 Learning centres, mosque, 'moktob' (religious education centres), water point, latrine, shop, CFS, WFS, homestead garden, LPG storage, nutrition centre, health facility,	913 (burnt)	1,598 relocated to camp 7	7,431 people
8W	31 sub-blocks (block A, B, C, D) affected	Learning centre, mosque, moktob (religious education centres), water point, latrine, shop, CFS, WFS, homestead garden, 01 training centre, more than 300 bathing cube and toilets are damaged,	2,433 (Block A- 180, B- 1,200, C- 936, D- 117)	879 people relocated to camp 3 from camp 8W and 9	13,500 affected people (Death 5 people)
9	Block – A, B, C, D, E , I, G are completely burnt, and H, F are partially burnt	Completely burnt facility- BMS hub, police station, 3 marketplaces, AFAD (Turkish), 50 LCs, 3 hospitals, 60 mosque, 10 'madrasha' (religious education centres), 6 health post, 1 WFP food distribution centres, Partially burnt - Balukhali MSF clinic, IOM PHC	7,000 (burnt)		35,000 affected people. Death 7 people (4 male, 1 female, and 2 children)
10	Not confirmed yet	LPG storage, 2 LCs,	2,710 are suspected to be damaged		

Note: This information has received from RRRRC Staff, SMS, FSCD, GBV SS-CXB, BDRCS, BRAC situation report, Rapid assessment (WaSH sector) CPP camp volunteers, CPP Focal, Supervisors CPP Coordinator who are still on the ground

3. RCRC response

- The Emergency Operations Centre (EOC) of the BDRCS activated yesterday, continues to lead the RCRC response and facilitate overall sectoral coordination.
- 775 Cyclone Preparedness Programme (CPP) / Disaster Management Unit camp volunteers have been mobilized to support in extinguishing the fire, relocating people to safe ground, providing first aid, restoring missing children, and are currently working to provide food (dry food) support with the guidance from Site Management Support (SMS) agencies of the camps.



- 06 CPP volunteers from the neighbouring host community are also providing support under the guidance from the Camp-in-Charge and in coordination with Site Management Support (SMS) agencies of the camps.
- IFRC is likely to launch DREF.
- ICRC along with local Unit will work on RFL as deem necessary.
- BDRCS is on standby to distribute emergency stock (see table below) based on emergency needs assessment.

As per our update from Logistics currently we have the following emergency stock at hand

Items	Quantity	Location	Remarks
Muli Bamboo	30,000	Balukhali Distribution point	
Borak Bamboo	1,000	Balukhali Distribution point	
Tarpaulin	40,000	WFP Modhuchhara hub	
Sleeping mat	27,575	BDRCS Warehouse	
Jerrican	8,900	BDRCS Warehouse	
Bucket	12,000	BDRCS Warehouse	
Tent	300	WFP Modhuchhara hub	Can accommodate 2,500 individuals
Rope (3mm and 6mm)	20,000 kg	BDRCS Warehouse	
Emergency Kitchen set	2,900 set	BDRCS Warehouse	
Dead body bag	2,000 pcs	BDRCS Warehouse	
Hygiene kits	4,000 sets	BDRCS Warehouse	

4. Immediate support of BDRCS to camp people:

- RCRC volunteers are onboard and will continue to provide support as long as required.
- Provision of dry food for 1,000 persons for next one week
- Materials for hot meals will be provided for 1,000 people for next one week



- 600 tents received from RRRC are being installed today in the affected camps. 110 staff and volunteers have been started erection of tents and cleaning debris and bringing out dead bodies.
- 01 Ambulance from BDRCS is on the ground for emergency health support
- Field Hospital is ready to attend any injured
- Community Based Health and First Aid (CBHFA) teams are engaged in camp 8E
- 1,800 surgical masks and 1,800 pairs of hand gloves have been handed over to IOM

5. Coordination and communication:

- Sectoral and Program Support coordination meetings (involving Shelter, WaSH, DRR, Security, Communications, Administration, HR and Logistics) are underway.
- A technical team comprising members from BDRCS Head of Operation, Director-response, PMO-MRRO representatives travelled to the camp yesterday evening (22 March) to observe the current scenario and met with RRRC at camp 8 and decided some immediate actions. Also, another team travelled to the camps this morning to continue with assessments and coordination meetings.
- BDRCS is continuing to coordinate and communicate with IOM and the respective camp SMSs (affected camps and other camps where communities have been relocated).
- Partner National Society's (PNSs) express their solidarity and assure their full support to implement any action.

Shared information is solely usable within RCRC as compiled information are not verified.

Situation Report-03 As of 7:00 PM (23rd March 2021)

Fire incident in Cox’s Bazar camp settlements

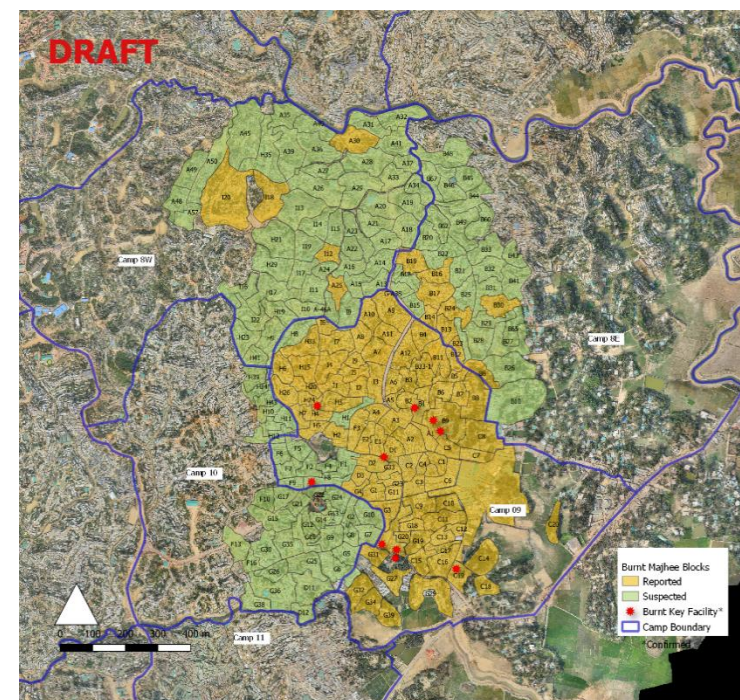
Emergency Operation Centre (EOC), Bangladesh Red Crescent Society (BDRCS)

I. Situation background

A fire has swept through a sprawling camp community in Cox's Bazar, Bangladesh, destroying shelters, facilities and endangering lives. The fire originated from block D in Camp 8W at about 3:00 PM on 22 March 2021. The frequent wind flow made the fire spread quickly to other camps comprising camps 8E, 9, and 10, completely razing a huge amount of infrastructure – these included shelters, mosques, community centres, learning centres, service centres, learning facilities, shops, LPG storage sheds and SMS office. The fire was put out in three camps (8E, 8W & 9) around 9:45 PM the same day (22 March 2021), and at 1:00 AM on 23rd March in Camp 10, by the Fire Service and Civil Defense (FSCD) teams with support from CPP volunteers and BDRCS staff (Population Movement Operation and Myanmar Refugee Relief Operation) and fully controlled in after 1:00 AM on 23rd March.

So far, 11 casualties have been reported, and a total number of 3,800 families have been relocated to other camps. Over 150 Red Crescent staff & volunteers and 1,558 Cyclone Preparedness Programme (CPP) camp volunteers worked since beginning of the fire incident to rescue the people, provide first aid, install the tents, distribute food & non-food items and support Site Management Support (SMS) Agencies to accommodate relocated people at different facilities.

Camps affected by fire



Source of Map: IOM

Damage and Casualties Information (Camp 8E, 8W, 9)	
Death	11
Injured	563
Missing	339
Displaced	Family – 3,800 (to 30 camps)
Shelter damaged/destroyed	9,505 (partially- 9,347 and fully - 161)
Affected population	45,122 people
<i>Source of information: SMSD and RRRRC press briefing</i>	

2. Camp Wise Damage Information

Camp	Blocks/sub-block affected/burnt	Facility Damaged	Damaged Shelter	Relocated people	Affected people
8E	21 sub-blocks affected	346 facilities	Fully damaged: 847	1,151 family relocated to safe ground	6,589 people affected
8W	31 sub-blocks (block A, B, C, D) affected	301 facilities	Fully damaged: 2,373	2,138 family relocated to safe ground	11,153 affected people
9	Block – A, B, C, D, E, I, G are completely burnt, and H, F are partially burnt	962 facilities	Fully damaged: 6,127 Partially damaged: 161		27,380 affected people.

Note: Site Management Support (SMS) Agency, SMSD, CPP camp volunteers, CPP camp focal points, Supervisors, CPP Coordinator who are still on the ground.

3. RCRC response

- The Emergency Operations Centre (EOC) of the BDRCS activated on 22nd March, continues to lead the RCRC response and facilitate overall sectoral coordination.
- 1,558 Cyclone Preparedness Programme (CPP) camp / Disaster Management Unit volunteers (including 1,213 male, and 345 female) have been mobilized to support in relocating people to safe ground, providing first aid, restoring missing children, and are currently working to provide food (dry food) support with the guidance from Site Management Support (SMS) agencies of the camps.
- 15 CPP volunteers from the neighboring host community are also providing support under the guidance from the Camp-in-Charge and in coordination with Site Management Support (SMS) agencies of the camps.
- IFRC has launched Disaster Response Emergency Fund (DREF).
- CEA team is disseminating information on *Available Service Provision* developed by Communication with Communities (CwC) Working Group of ISCG in Camp 11, 12, 13, 14, 15, 17, 18 and 19. This includes where the affected people need to go for information on family reunification, report lost cases, where people need to go for the primary psychological support to manage trauma. where people need to go for accessing the basic and primary health services.
- PSS team in camp 13 and 19 provided Psychological First Aid (PFA) among 46 families and 212 individuals (101 male and 111 female) relocated from camp 9 and 8W to reduce stress and anxiety.
- BDRCS shared available emergency stock information with RRRC for wider coordination, engagement, and response to the crisis. (Please see Annexure 1)



4. Immediate support of RCRC to camp people:

- BDRCS and CPP volunteers are onboard since initiation of fire incident and will continue to provide support as long as required in consultation with respective Camp in Charge (CiC) and Site Management Support (SMS) Agency.
- BDRCS (MRRO) deployed 110 staffs and volunteers to install 800 tents received from RRRC at camp 9. Since this morning (23rd March) staffs and volunteers are cleaning debris and already installed 90 tents.
- 01 Ambulance from BDRCS is on the ground for emergency health support in coordination with Cox's Bazar health sector.
- BDRCS Field Hospital is ready to attend any injured.
- Community Based Health and First Aid (CBHFA) teams are engaged in camp 8E for providing first aid.
- 1,800 surgical masks and 1,800 pairs of hand gloves have been handed over to IOM to further distribute staffs and volunteers working at camps.
- BDRCS will support 5,000 families with tarpaulin, sleeping mat, bucket, hygiene kit, kitchen set, rope and bamboos (muli and borak).

5. Coordination and communication:

- Sectoral and Program Support coordination meetings involving Shelter, WaSH, DRR, Security, Communications, Administration, HR and Logistics are happening on a regular interval.
- Senior leadership of RCRC visited at camp 9 and 8W and coordinated with respective CiC and SMS Agencies for wider engagement. As Secretary of Ministry of Disaster Management and Relief (MoDMR) called upon a coordination meeting at camp 8W today (23rd March) at 1:00 PM, BDRCS, IFRC, and PNSs leadership joined the meeting and shared immediate possible intervention from BDRCS to support ongoing response to fire incidents.
- BDRCS, IFRC and PNSs senior management joined the RRRC coordination meeting today (23rd March) at 3:00 PM in Cox's Bazar where all relevant government departments, UN, I/NGO and other actors jointly discussed the immediate and future response actions under the leadership of Secretary of MoDMR.
- BDRCS is continuing to coordinate and communicate with IOM and the respective camp SMSs (affected camps and other camps where communities have been relocated).

Annexure I

As per our update from sectors currently we have the following emergency stock at hand:

Sector	Items	Quantity	Location	Remarks
Shelter	Muli Bamboo	30,000 pcs	Balukhali Distribution Point	
	Borak Bamboo	1,000 pcs	Balukhali Distribution Point	
	Tarpaulin	40,000 pcs	WFP Modhuchara Hub	
	Sleeping mat	27,575 pcs	BDRCS Warehouse	
	Rope (3mm)	19,000 kg	BDRCS Warehouse	
	Rope (6mm)	25,000 kg	BDRCS Warehouse	
	Family size tent	300 pcs	WFP Modhuchara Hub	Can accommodate 2,500 individuals
	Emergency Kitchen set	2,900 set	BDRCS Warehouse	
	Mosquito net	33,222 pcs	BDRCS Warehouse	
	Sand bag	238,000 pcs	BDRCS Warehouse	
WaSH	Jerrican	8,900 pcs	BDRCS Warehouse	
	Bucket	12,000 pcs	BDRCS Warehouse	
	Hygiene kits	4,000 sets	BDRCS Warehouse	
	Mobile toilet	30 pcs	BDRCS Warehouse	
Health	Surgical mask	2,900 set	BDRCS Warehouse	
	Dead body bag	2,000 pcs	BDRCS Warehouse	
DRR	Umbrella	2,697 pcs	BDRCS Warehouse	

Situation Report-04 As of 6:00 PM (24th March 2021)

Fire incident in Cox's Bazar camp settlements

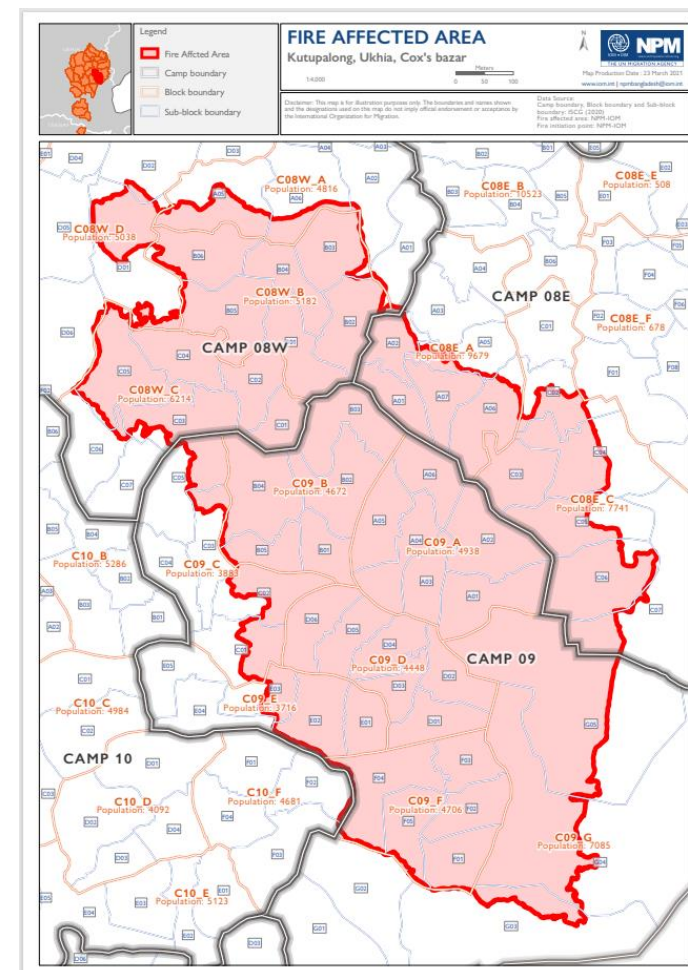
Emergency Operation Centre (EOC), Bangladesh Red Crescent Society (BDRCS)

I. Situation background

A fire has swept through a sprawling camp community in Cox's Bazar, Bangladesh, destroying shelters, facilities and endangering lives. The fire originated from block D in Camp 8W at about 3:00 PM on 22 March 2021. The frequent wind flow made the fire spread quickly to other camps comprising camps 8E, 9, and 10, completely razing a huge amount of infrastructure – these included shelters, mosques, community centres, learning centres, service centres, learning facilities, shops, LPG storage sheds and SMS office. The fire was put out in three camps (8E, 8W & 9) around 9:45 PM the same day (22 March 2021), and at 1:00 AM on 23rd March in Camp 10, by the Fire Service and Civil Defense (FSCD) teams with support from CPP volunteers and BDRCS staff (Population Movement Operation and Myanmar Refugee Relief Operation) and fully controlled in after 1:00 AM on 23rd March.

So far, 11 casualties have been reported, and a total number of 3,800 families have been relocated to other camps. BDRCS and CPP volunteers are onboard since the initiation of fire incident and will continue to provide support as long as required in consultation with respective Camp in Charge (CiC) and Site Management Support (SMS) Agency. Overall, 1,585 Red Crescent staff & RCYs, Cyclone Preparedness Programme (CPP) camp & neighboring host CPP volunteers and BDRCS community volunteers are working to support relocated camp people, install the tents, distribute food & non-food items and support Site Management Support (SMS) Agencies to accommodate relocated people at different facilities.

Damage and Casualties Information (Camp 8E, 8W, 9)	
Death	11
Injured	563
Missing	339
Displaced	Family – 3,800 (took shelter to other camps)
Shelter damaged/destroyed	9,508 (fully- 9,347 and partially - 161)
Affected population	45,122 people
<i>Source of information: SMSD and RRRC press briefing</i>	



Source of map: ISCG

2. Camp Wise Damage Information

Camp	Affected Blocks	Facility Damaged	Damaged Shelter	Relocated people	Affected people
8E	Block A and C are affected	346 facilities	Fully damaged: 847	1,151 family relocated to safe ground	6,589 people affected
8W	Block A, B, C, D are affected	301 facilities	Fully damaged: 2,373	2,138 family relocated to safe ground	11,153 affected people
9	Block A, B, C, D, E, F, G are affected	962 facilities	Fully damaged: 6,127 Partially damaged: 161		27,380 affected people.

Source of information: Site Management Support (SMS) Agency, SMSD, ISCG, CPP camp volunteers, CPP camp focal points, Supervisors, CPP Coordinator who are still on the ground.

3. RCRC contribution to fire incident

3.1. Institutional response mechanism

- The Emergency Operations Centre (EOC) of the BDRCS activated on 22nd March, continues to lead the RCRC response and facilitate overall sectoral coordination.
- IFRC has launched Disaster Response Emergency Fund (DREF) – 3 lacs and 50 thousand CHF.
- BDRCS sector focals is regularly coordinating through formal and informal meeting to respond the crisis.
- BDRCS/IFRC and PNSs, met early morning to discuss ongoing emergency response action, emerging gaps & needs and provide guidance as way forward

3.2. Ongoing response actions at camps

- 1,358 Cyclone Preparedness Programme (CPP) camp / Disaster Management Unit volunteers (including 1,061 male, and 297 female) have been mobilized under the supervision of 14 CPP camp focal/supervisors to support relocated people, reunited missing children, also to provide food (dry food) support with the guidance from Site Management Support (SMS) agencies of the camps.
- PSS team in camp 13 and 19 provided Psychological First Aid (PFA) among 48 families and 240 individuals (106 male and 134 female) relocated from camp 9, 8W and 10 to reduce stress and anxiety.
- PGI team deployed 6 RCYs and 15 community volunteers and reunited 50 children with their family.

- CEA team deployed 22 community volunteers to disseminate “Public Service Announcement – PSA” in 8 different camps (camp 11, 12, 13, 14, 15, 17, 18, and 19) through loudspeaker and megaphones. The CEA action reached approximately 400 individuals.
- BDRCS health post at camp 8E is functional, already attended 40 patients today (24th March). One ambulance is standby at BDRCS field hospital for emergency health support in coordination with Cox’s Bazar health sector.
- BDRCS Shelter team distributed tarpaulin and mosquito net (11,000 pieces of both items will be distributed) and deployed 22 RCYs, community mobilizers and staffs for supporting this distribution.
- BDRCS handed over 100 pieces of umbrella to Camp in Charge of camp 8W for supporting the staffs and volunteers working in this crisis.
- BDRCS (MRRO) deployed 100 staffs and 50 volunteers to install 800 tents received from RRRC at camp 9 and have already installed 400 tents as of today (24th March).
- BDRCS shared available emergency stock information with RRRC for wider coordination, engagement, and response to the crisis. *(Please see Annexure 1)*

3.3. RCRC commitment to these incidents

Through coordination with IOM and MoDMR, RCRC committed to provide following support:

Sectors	Name of Items	Unit	Quantity	Remarks
WaSH	Hygiene Top Up kit	Nos. (kit)	44,000	40,000 available to dispatch/distribute and 2,400 Nos. will be provided by German Red Cross will provide (which is available). Remaining 1,600 will take time to be dispatched/distributed
	Aquatab	Million	1.2	Available to dispatch/distribute
	Soaps	Pcs	30,000	Available to dispatch/distribute
	Bucket (10 L)	Pcs.	30,000	Available to dispatch/distribute
	Foldable Jerrycan (10 L)	Pcs.	8,000	Available to dispatch/distribute
	Emergency Latrine	Unit	50	Available to dispatch/distribute
	DTW repairs materials	Set	10	Available to dispatch/distribute
	Latrine twin pit (sector standard)	Unit	350	30 can be immediately installed and rests will take time to be dispatched/distributed
	Bathing Cubicles	Unit	220	Available to dispatch/distribute
Tarpaulin	Pcs.	700	Available to dispatch/distribute	
Shelter	Immediate Midterm Shelter construction (MTS) (1 st phase)	HH	1075	1,000 MTS from IDB, and 75 MTS from TRC

	MTS (2 nd phase)	HH	2,200	Required time to be installed
	Shelter tool kit	Pcs.	2,000	Available to dispatch/distribute
	Tarpaulin	Pcs.	11,000	Distribution is ongoing (2 pcs/HH)
	Mosquito net	Pcs.	11,000	Distribution is ongoing (2 pcs/HH)
	Blanket	Pcs.	1,500	Will be distributed tomorrow (25 th March)
Food and Livelihood	Food item - <i>(Dry food items: bread 18 slides, peanut, sweet molasses- 500-gram, biscuit-80 gram/pack, water bottle, purified rice, cartoon/box)</i>	Package	2,500	TRC will support with dry food package to 1,500 HH and BDRCS/IFRC will support 1,000 HH for 7 days.
PGI	Dignity kit	Pcs.	2,000	-
Health	Health support (first aid, ambulance standby, PSS, PHC & BDRCS hospital ready to attend patient)			-
<i>MRRO through UNHCR supporting with hygiene kit, solar lamp, tarpaulin</i>				

4. Coordination and communication:

- BDRCS/IFRC attended coordination meeting with MoDMR, and RRRC office to share the existing RCRC emergency stock on WaSH, Shelter, PGI, Health, Food and Livelihood which can be allocated based on need.
- As IOM is the lead coordinating agency, BDRCS/IFRC senior management met IOM senior management, Emergency Response and SMSD focal points to discuss emergency capacities including food and non-food support and human resources to be utilized as and when required with IOM.
- Senior leadership sector focal of RCRC visited at camp 9, 8W to discuss with Md. Khalilur Rahman Khan, Additional RRRC, and respective CiC about the emergency response support.
- BDRCS/IFRC attended the online food security cluster meeting to share possibilities of dry food distribution in 8E, 8W, and 9, as major actors are already distributing hot meals to all affected families in camps, RCRC will remain vigilant and available in order to provide food support as and when required.

Annexure I

As per our update from sectors currently we have the following emergency stock at hand:

Sector	Name of Items	Unit	Amount
Shelter	Muli Bamboo	30,000 pcs	Balukhali Distribution Point
	Borak Bamboo	1,000 pcs	Balukhali Distribution Point
	Tarpaulin	40,000 pcs	WFP Modhuchara Hub
	Sleeping mat	27,575 pcs	BDRCS Warehouse
	Rope (3mm)	19,000 kg	BDRCS Warehouse
	Rope (6mm)	25,000 kg	BDRCS Warehouse
	Family size tent	300 pcs	WFP Modhuchara Hub
	Emergency Kitchen set	2,900 set	BDRCS Warehouse
	Mosquito net	33,222 pcs	BDRCS Warehouse
	Sand bag	238,000 pcs	BDRCS Warehouse
WaSH	Jerrican	8,900 pcs	BDRCS Warehouse
	Bucket	12,000 pcs	BDRCS Warehouse
	Hygiene kits	4,000 sets	BDRCS Warehouse
	Mobile toilet	30 pcs	BDRCS Warehouse
Health	Surgical mask	2,900 set	BDRCS Warehouse
	Dead body bag	2,000 pcs	BDRCS Warehouse
DRR	Umbrella	2,697 pcs	BDRCS Warehouse