

OPERATION UPDATE

Mozambique, Africa | Tropical Cyclone Idai and Kenneth

Appeal №: n° MDRMZ014	Operations Update n° 8 Date of issue: 17 February 2021	Timeframe covered by this update: 01 January 2021 to 31 March 2021
	Operation start date: 19 March 2019	Operation timeframe: 28 months
Glide №: TC-2021-000008-MOZ	IFRC Funding requirements: CHF 32,000,000 Federation-wide response funding requirements: to be confirmed	If Emergency Appeal/ One International Appeal operation, DREF amount initially allocated: CHF 750,000.

Red Cross Red Crescent Movement partners currently actively involved in the operation:

National Red Cross Societies from Spain, Belgium-Flanders, Germany, Italy and Portugal, as well as International Committee of the Red Cross (ICRC) and International Federation of Red Cross and Red Crescent Societies (IFRC) are present in the country and are actively supporting the Mozambican Red Cross (CVM, Cruz Vermelha de Moçambique). Many more partner National Societies (PNSs) supported CVM during the emergency phase financially and/or in-kind (including through the mobilization of Emergency Response Units and surge personnel): American Red Cross, Australian Red Cross, Austrian Red Cross, British Red Cross, Bulgarian Red Cross, Cabo Verde Red Cross, Canadian Red cross, Croatian Red Cross, Czech Republic Red Cross, French Red Cross, Hong Kong RC, Icelandic Red Cross, Irish Red Cross, Japanese Red Cross, Korean Red Cross, Kuwait Red Crescent, Liechtenstein Red Cross, Luxemburg Red Cross, Netherlands Red Cross, Norwegian Red Cross, Sao Tomé Red Cross, Seychelles RC, Singapore RC, Swedish Red Cross Swiss Red Cross and Turkish Red Crescent.

Other partner organizations actively involved in the operation:

WFP, FAO, UNICEF, WHO, UNFPA, IOM, Care, Save the Children, Oxfam, Caritas, and Government authorities in all concerned sectors. Spanish AECID, Airbus Foundation, Booking Care, Coca Cola, Credit Suisse Foundation, Czech Republic, DFID, ECHO, Erickson-Malinoski Giving Fund (TIAA) on behalf of Bernadette Malinoski, Estonia MoF, Facebook, IFRC at the UN Inc., Irish Aid, Italian Government Bilateral Fund, Lichtenstein Government, Lionel and Ann Rosenbaltt, Luxemburg Government, MundiPharma, New Zealand Government, OPEC Fund for International Development (OFID), Patrick J McGovern Foundation, Pernod Ricard, Robert L. Robertson, Sanford Waxer, Shell, Transfigura, USAID/OFDA, White & Case LLP, WHO, World Remit. Private donors in Germany, Belgium, Switzerland, United States, Netherlands.

Click [here](#) for the interim financial report and [here](#) for contacts



1 / 2

CVM's FbF initiates the monitoring of international and national forecasts in daily coordination meetings and calls (Source: Mozambique Red Cross Society)

A. THE DISASTER AND THE RED CROSS RED CRES- CENT RESPONSE TO DATE



CVM Staff assessing the damage of Cyclone Eloise, 23 January 2021 Source: CVM

10-January-2019: Tropical Storm Desmond Landfall
14-March-2019: Tropical Cyclone Idai
25-April-2019: Tropical Cyclone Kenneth
January- 2020: Cholera in Nampula
January-February 2020: Severe Floods in Central Provinces Mozambique
March-April- 2020: COVID-19 First Case and Restrictive Measures
30-December 2020: Tropical Storm Chalane
23-January-2021: Severe Tropical Cyclone Eloise

Situation overview

This Operation Update #8 reports on the achievements of the Emergency Appeal for Mozambique in response to Tropical Cyclone Idai and Kenneth for the period covering 1 January 2021 to 31 March 2021. The figures of people assisted are, however, cumulative since the beginning of the operation (March 2019). The months of March and April 2021 marked the second anniversary of cyclones Idai and Kenneth respectively, which left significant destruction across Mozambican provinces. After two years, the main balance is visibly the 93,418 Internally Displaced Persons (IDPs)¹ that are still living in resettlement sites and accommodation centres, in the same versions of emergency shelters from Cyclone Idai, now beyond degraded. The road to recovery for these communities has been difficult as it has been interrupted several times by the recurrent floods and tropical rains (including Cyclone Eloise),² which created additional shocks: causing repeated damages to shelter, crops and infrastructure. The vulnerability of the Idai-affected communities has been further exacerbated by COVID-19 pandemic restrictive measures imposed by the Mozambican government which have been in place since March 2020. The insecurity situation in central and northern provinces has spiralled the number of IDPs in the country as of February 2021, 700,000 IDPs³ are reportedly said to have fled Cabo Delgado into neighbouring provinces or cross into Tanzania.

According to the Shelter Cluster report⁴ on the challenges and gaps faced by the Idai-affected communities in central Mozambique, as of March 2021, the non-displaced communities who were also affected by cyclone Idai continue reporting large gaps and needs with 48,743 families in need of assistance in shelter and essential NFIs (non-food items) such as blankets, solar lamps, kitchen sets, jerry cans, sleeping mats. This group is reported to have received little support as none of the partners implementing permanent housing projects is working with them.

This operation updates also highlights the changes in the humanitarian context due to the vulnerabilities generated by events such as the ongoing restrictions because of the COVID-19 pandemic, the floods and two tropical storm/cyclones experienced from December 2020 throughout January 2021 (Chalane, Eloise), and the ongoing insecurity situation in the country and elaborates the actions taken so far as well as the shift in the operational strategy considering these circumstances. Some of the recovery activities have been delayed or put on hold from March 2020 until March 2021, following the declaration of a State of Emergency in Mozambique and accompanying restrictions to mobility that have been observed as well as enhanced duty of care towards staff, volunteers, as well as of course communities.

The Mozambique Red Cross, CVM, with the support of the IFRC and Movement partners is supporting communities affected by cyclones across provinces with a range of regular programmes as well as the continuation of activities of the latter part of the current appeal of Cyclone Idai.

The revised [Emergency Appeal](#) chronogram was approved and published in September 2020, which resulted in a timeframe **extension for four months** to cover the time lost due to COVID-19 pandemic and fulfil the recovery commitments towards the population of concern.

The ongoing COVID-19 restrictions, and the natural disaster events experienced in the country during the reporting period, such as flooding, and responding to more imminent needs raised by Cyclone Eloise, have undoubtedly presented challenges to the recovery operations of Cyclone Idai. In particular, due to the floods experienced in January 2021, it was difficult to access some flood-prone areas of intervention, throughout February, especially the locality of Chinamacondo, in Dondo District, and the localities in Buzi and Mashanga Districts. As a consequence, some operations had to be put on hold, due to the 37 road cuts, as reported by the [Eloise Bulletin #2](#). Other logistical challenges delayed operations such as slower procurement and transport of materials. The loss of time due to the various constraints slowed down the progress of recovery activities by sectors to assist the Idai affected communities.

¹ [Multi-Sectoral Location Assessment-January 2021|ReliefWeb](#)

² [Appeals - IFRC](#)

³ [Mozambique: Cabo Delgado Emergency Situation, Flash Update #2 \(4 April 2021\) - Mozambique | ReliefWeb](#)

⁴ [Shelter and NFI Cluster: Cyclone Eloise Impact](#)

During the reporting period of January – March 2021, CVM, with the support of the IFRC, CVM prepositioned emergency teams before Eloise making landfall. CVM volunteers supported preparedness activities and the evacuation of people from flood-prone areas, and CVM was one of the first to respond to the emergency on the ground. The activities carried out in response to the floods and cyclone Eloise include:

- Deployment of teams from headquarters to Inhambane, Manica and Sofala Provinces in preparation for landfall.
- Dissemination of Early Warning messages and support in evacuation the days before landfall through sound systems on cars and volunteers in Buzi and Beira.
- Search and rescue of 150 families (882 persons, 78 men, 458 women, 346 children) through volunteers by boat in Buzi. People were rescued from rooftops and treetops. First aid was provided to the families.
- CVM supported 24,301 persons to cross the river in Nhamatanda district.
- CVM supported the government by mobilising 96 volunteers in the transit centres and put on standby a further 150 volunteers in the Sofala Province.
- Distribution of 500 mosquito nets in accommodation centres in Nhamatanda District and almost 1,128 bottles of certeza/chlorine distributed to 4,224 beneficiaries accompanied by presentation of household water treatment (Districts of Buzi, Dondo, Beira, Nhamatanda). Approximately 61,467 litres of water were treated.
- CVM volunteers carried out sensitization on acute watery diarrhoea, malaria and COVID-19 in 8 accommodation centres and 7 neighbourhoods by 96 volunteers. 135 presentations were held and 19,249 beneficiaries were reached.
- PSS support to staff, volunteers and beneficiaries. 1,040 sessions were held in which 5,005 beneficiaries were reached.
- CVM participated in different coordination meetings such as at CENOE (Centro Nacional Operativo de Emergência = Emergency Ops National Center), led by INGD and HCT at all levels.
- CVM had active participation in different clusters and leading the Shelter one with the IFRC support.
- In Zambézia and Manica CVM, 180 volunteers were involved in the rapid assessments integrated the multisector lead by INGD.

Highlights of the Operations Update (cumulative data) [11](#):

The IFRC and CVM assisted a total population of **736,680 people** since the start of the operation, in the different sectors.

- **Livelihoods and Basic Needs: 62,110 people** have been reached out of which 15,990 persons were reached during this quarter. Assistance provided ranges from basic needs assistance, to livelihoods recovery with seeds, agricultural tools, farming schools and support to fisherfolks in target communities.
- **Health and PSS: 398,796 people** were provided with access to different health services and health promotion activities, including people reached on cholera prevention and awareness for COVID-19 prevention in different provinces.
- **WASH: a total of 674,570⁵ people** were reached through Idai/Kenneth operation with different WASH services, amongst which 78,119 people were only reached during this period of January – March 2021 in the target implementation districts. Like in the previous quarter, activities focused on hygiene promotion, access to safe drinking water and latrine construction where appropriate.
- **Protection, Gender and Inclusion (PGI): 127,520 people** have been supported with PGI services, including Sexual Gender-based Violence (SGBV) prevention and Child Protection programs in the communities.
- **Shelter: a total of 140,217 people** were supported by CVM and IFRC with essential shelter items. During this period, 500 people were reached through an assessment in order to establish the beneficiary list for durable shelter constructions. Construction materials for 100 permanent shelters have been purchased and construction is ongoing. In Buzi district, 2 permanent houses, which will also serve as model for the training of the masons will be completed before the end of June 2021. A total of 100 permanent houses are targeted for the project, and the respective most vulnerable families have been identified. CVM, with the support of IFRC, supported a total of 500 families of IDPs fleeing the conflicts in the Province of Cabo Delgado with emergency shelters and NFIs.

⁵ Number of people reached of 674,570 people is over the target of 350,000 people due to (1) The intense campaign and mobilization of all target communities on Covid-19 prevention measures done by teams and CVM volunteers, reached far more people than originally expected (2) The handwashing points were placed in strategic public spaces such as markets, health centres, schools etc were much needed and are serving far much more people than originally expected. (3) For Covid-19 prevention measures and RCCE, CVM is the leading strategic partner for the Government and IFRC is supporting CVM's ambitious plan

Summary of events from January – March 2021 in more detail below:

Increase in Cases of Covid-19

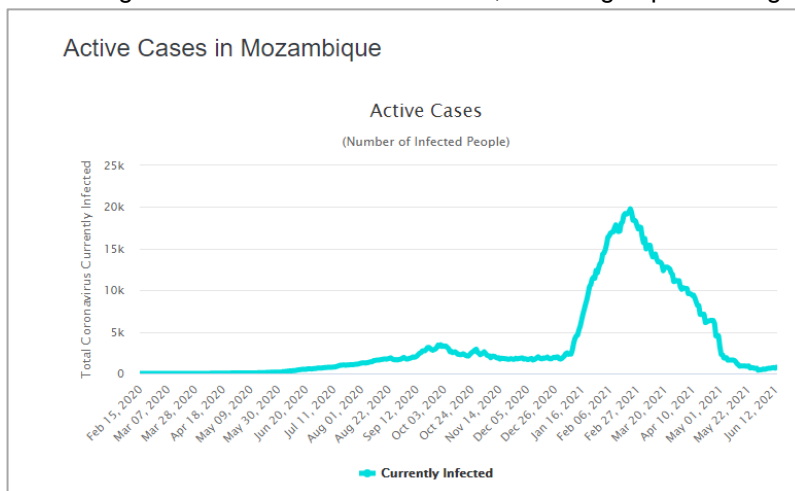
The number of confirmed cases and the death toll more than doubled in January 2021, from 18,642 (December 2020) to 38,654 cases, and from 166 deaths (December 2020) to 367 deaths. Following the rapid increase in confirmed COVID-19 cases and deaths since 1 January 2021, the government tightened containment measures, including implementing a 9 pm to 4 am curfew for the greater Maputo area, which was extended to all provincial and district capitals across the country. Although South Africa has reopened its main borders, strict COVID-19 control measures and tighter border controls for immigrants continue to impact informal cross-border trade and labor migration negatively. The current COVID-19 restrictions continue to drive Crisis (IPC Phase 3) outcomes among the poorest households in urban and peri-urban areas, as income from casual work and small business remains below average.

The Health Minister, Armindo Tiago, announced on 27 January that the 501.V2 variant had been circulating in Mozambique since November 2020.

On 8 March 2021, vaccinations started, prioritising the health staff. There were 8,229 new cases in March, taking the total number of confirmed cases to 67,579. The death toll rose to 775. The number of recovered patients increased to 56,409, leaving 10,391 active cases by the end of the month. There has been initiatives related to answering key covid-19 questions from community members through meetings and mediations by community leaders.

Floods and Cyclone in January 2021: The floods and Cyclone Eloise experienced in January 2021 generated a state of emergency in the same geographical areas that the operation is responding to cyclone Idai, bringing destruction and additional shocks to the Idai affected communities. Approximately 86,400 families were reported by the government to have been affected by the impact of the floods and cyclone Eloise⁶ in January 2021, leaving 11 people dead. Moreover, more than 43,000 people were displaced and were sheltered in accommodation centres with significant numbers in the districts of Buzi and Nhamatanda, in Sofala Province. Due to this situation, recovery activities were put on hold, to respond to more imminent humanitarian needs, especially in the districts of Nhamatanda and Buzi in the Sofala Province. A DREF was launched for the period from January to April 2021.

Access Roads: The floods experienced from December 2020 throughout January 2021, brought infrastructure damage including damage to roads. This made it difficult for humanitarian actors (including Red Cross) to access remote areas. The Shelter program was one of the most affected as truck carrying shelter materials could not access the



THE EFFECTS OF IDAI AT A GLANCE

Table 1 and Fig. 2 summarize the main effects of Cyclone IDAI, particularly the number of people affected by the Cyclone, as well as the damaged or destroyed houses, schools, health facilities, cultural centers, livestock, irrigation systems, businesses, water and sanitation facilities, energy and transport infrastructure.

Table 1: Total population by province, and number of affected people by province

	Population (2019)	Affected population (2019)	% of total
Zambezia	5 164 732,0	6 035,0	0,1
Tete	2 648 941,0	54 721,0	2,1
Manica	1 945 994,0	262 890,0	13,5
Sofala	2 259 248,0	1 190 596,0	52,7
Inhambane	1 488 676,0	422,0	0,0
Affected Provinces	13 507 591,0	1 514 662,0	11,2
Mozambique	27 909 798,0	0,1	5,4

Source: INE 2019; INGC database 2019



IFRC vehicle was stuck for more than 5 hours while travelling to Mashanga, in Sofala province-February 16, 2021

Chinamacondo (Dondo District) and Buzi District communities for almost two months due to damage to access roads. This slowed down the recovery operations of Cyclone Idai by two months in this area.

Logistics Constraints: The restrictive measures on COVID-19 have been in place for a longer period than initially expected. The recovery operations were faced with further delays in procurement and logistics processes.

The two sectors most affected by events described above:

Shelter Program: Located in flood-prone locations, the programme was put on hold during the rainy season 2020. Because of the ongoing delays and knock-on impact on homes in the area, the CVM and IFRC team revisited the strategy of this sector's intervention. The team discussed with community leadership the appropriateness of transitional shelter compared to more permanent intervention. A joint decision was made in March 2021 to support the targeted community by offering more permanent housing. The more permanent intervention requires a larger timeframe than what is available during Cyclone Idai recovery operations.

Vocational Training Project: The project was delayed due to restrictions on COVID-19, which forced schools to close for a considerable number of months. Although schools resumed activities in 2021, the intake number of students was reduced due to the COVID-19 restrictions. Under the current timeframe of two months prior to the close of Operation Idai, the CVM and IFRC Livelihoods team cannot fulfil their commitment to assist 600 beneficiaries with vocational trainings within the period of the Cyclone Idai, however, the team intends to carry out vocational trainings for 300 young adults until October 2021, with the kind support of the British Red Cross.

Summary of Red Cross Red Crescent Response to Date

Overview of Host National Society

The CVM has a longstanding presence in all 11 provinces of the country and currently covers 133 districts through its district branches, out of the 154 districts. The CVM has approximately 220 permanent staff that ensure programs are delivered in all 11 provinces and manage a large network of 5,500 volunteers countrywide. CVM has also 17 warehouses in 9 provinces, enabling a considerable preparedness and prepositioning capacity to respond to eventual emergencies. Nevertheless, and despite its impressive grassroots humanitarian work delivered by committed volunteers, CVM is facing considerable financial and managerial constraints, reducing the scope for necessary investments in capacity building of its human resources, provide branches with appropriate technical equipment, and upgrading its management systems.

Despite constraints, the National Society was ready and positioned to support populations prior to the Cyclone Idai disaster, with volunteers sensitizing and supporting the preparedness of populations, and was one of the first actors to respond to the emergency on the ground, using financial instruments available to them through the movement (Forecast based project, crisis modifiers, and the DREF). Achievements made up to December 2020 are detailed in [operation update no 7](#).

Overview of Red Cross Red Crescent Movement in country

The IFRC initiated operations in Mozambique in response to the cyclones in March 2019. During the first months of the emergency response, the IFRC and CVM coordinated a team of 8 Emergency Response Units (ERUs) with over 160 international surge staff. Strengthened Movement Coordination and Cooperation (SMCC) was set up, with the deployment of a Movement Coordination Officer, and led by CVM with IFRC support. The relief operations were intense and by large successful, reaching the most vulnerable populations in remote or areas cut-off from assistance, in the provinces of Sofala, Cabo-Delgado and Nampula. IFRC maintains a strong presence in the affected areas and in support of CVM, with over 100 staff (12 international and 88 national).

The coordination of the operation is undertaken from Beira, with the support of the Maputo Country Office, with program activities extended to Manica, Tete, Zambezia and eventually Nampula, due to an ongoing cholera outbreak. The ICRC ended its programs in the central region and concentrates its efforts in Cabo Delgado as the conflict expands and population displacement increases. The collaboration between ICRC, CVM and IFRC has been instrumental to raise the Movement capacity in the Northern province, where its foothold in the frontline of assistance has been commended by the government and partners. In addition to ground operations, the ICRC continues to collaborate with CVM in capacitating its staff and volunteers in the areas of International Humanitarian Law (IHL) and safe access. The Spanish RC, German RC and Belgium-FL RC are long term partners of CVM and maintain operational presence in-country, particularly in the Provinces of Maputo, Gaza, Inhambane, Manica and Tete.

The IFRC working hand-in-hand with CVM, initiated the set-up of a new project, Zurich Flood Resilience Alliance (ZFRA) for Mozambique, particularly in Sofala province covering 2 districts, 6 communities and approximately 20,000 target people to be reached. The Project Agreement, Project Proposal and Activity-based Detailed Budget is in the process of finalization together with CVM. Coordination with INGD (National Institute for Disaster Management) was re-established in Sofala Province for the implementation of Community-based Disaster Risk Reduction (DRR) activities including the formation/re-activation of the local DRR Committees and capacity building (i.e. training and materials provision) of the target CVM Branches on flood search and rescue. The latter activity is being coordinated with government agency UNAPROC (National Unit for Civil Protection).

Other PNSs continue to provide financial support to the EPoA and remote support to CVM in different thematic and institutional areas. The IFRC continues to work in the strengthening coordination and partners' involvement in support to CVM.

On 4 March 2019, with the technical support from the IFRC and German Red Cross, CVM took the lead in developing an **Early Action Protocol for Cyclones (EAP)** within its Forecast-based financing (FbF) project. This was **the first in the Africa region**. An Early Action Protocol enhances preparedness to specific locations as the trajectory of a Tropical Storm or Cyclone builds up and is monitored. More details on the

In **December 2020**, three days prior to the predicted landfall of tropical storm Chalane forecasted for 30 of December 2020, the Mozambique Red Cross Society (CVM) with its main governmental counterparts, supported by German Red Cross (GRC) and the IFRC, decided to activate the [Early Action Protocol \(EAP\) for cyclones](#), and provided enhanced preparedness in the Buzi District, Sofala Province.⁷

According to INGD (government Institute for Disaster Management), and the results of the extensive vulnerability and risk analysis included in the EAP, Buzi district had the highest population at risk of both flooding and the effects of the cyclone (category 1-3), estimated at 25,800 people (at risk of flooding) and 186,500 people (at risk of cyclone). The intervention reached 1,500 households by distributing shelter kits, hygiene promotion and COVID-19 protection materials, which allowed vulnerable families to buffer the impact of the Tropical Storm Chalane coming, as well as the subsequent Cyclone Eloise, which made landfall in the same area one month later, in January 2021. The EAP activation also reinforced school structures in the same area.



1 / 2 Red Cross volunteers assist vulnerable households in the reinforcement of their houses (Source: Mozambique Red Cross Society)

The activity raised wider awareness around short-term preparedness and disseminated shelter reinforcement techniques to create more resilience in the area, with the help of 50 CVM volunteers.

The activation of the Early Action Protocol for Cyclones created significant visibility for CVM, also enhanced its role as one of the largest emergency response actors in Mozambique.

In March 2021, the Early Action Protocol Activation for Cyclone Lessons Learned Workshop was conducted, led by CVM, with the participation and support of the IFRC and German Red Cross. Representatives from government INGD (National Institute for Disaster Management) and INAM (National Institute of Meteorology) were also present in the activity. The workshop served as a venue to emphasize on key areas for improvement in Disaster Management such as emergency coordination and decision-making, deployment of teams, and triggers. It also highlighted National Society organizational capacities (e.g. logistics, finance, HR) which need to be further enhanced in relation to Disaster Management. Follow-up meetings were planned for the following months to develop Plan of Action.

The IFRC remains a strategic partner to CVM and support in coordination with PNSs, the government, UN, donors and other organisations operating in the country. In 2020, the IFRC and CVM jointly continued delivering one of the largest IFRC emergency appeal projects in Africa region, following Cyclones Idai and Kenneth in 2019. By the end of December 2020, this Emergency Appeal reached approximately 640,000 people across several humanitarian sectors.

As a result of strengthened disaster response capacity, with the support of IFRC and Movement partners, CVM took a leading role in helping communities during several other in-country disasters in 2020 (listed below). CVM led response by conducting search and rescue operations, by providing families with emergency shelter kits, hygiene promotion materials and other emergency relief supplies to families, emergency first aid and referrals to health and cholera centres, as well as by sharing critical disease prevention messages and psychosocial support, in accommodation centres and resettlement sites:

- Floods in Buzi and Nhamatanda (Sofala Province), February 2020
- Cholera in Nampula and Cabo Delgado Provinces, March 2020
- 1,100 families reached- IDPs Fleeing armed attacks in Cabo Delgado, June 2020 (also coordinated with ICRC)
- 284 families reached- IDPs Fleeing armed attacks (Manica Province), November 2020
- 1500 families reached-EAP Chalane Tropical Storm (Sofala Province), December 2020

The IFRC country delegation in Mozambique continued to support the National Society in strengthening its disaster preparedness and capacity to respond to hazards and crises, especially related to cyclones and floods in central provinces, which had been previously devastated by the impact of Cyclone Idai and Kenneth in 2019.

An IFRC Disaster Relief Emergency Fund (DREF) allocation of CHF359,689 was released on 23 January to assist CVM in expanding its assessment and response in support of the local authorities and increase operational capacity with the deployment of surge teams for logistics, communication, and operations. The DREF allocation included Essential Shelter and Household Items, Health and Care and WASH assistance to 1,000 affected households (5,000 people).

Overview of non-RCRC actors in country

The Government of Mozambique (GoM) leads the overall coordination for the disaster response through the National Institute for Crisis Management (INGC). The GoM and INGC declared Red Emergency right after Cyclone Idai and responded to the crisis by putting together a ministerial response group. In May 2019, the GoM decreased the alert from Red to Orange. A Post-Cyclone Reconstruction Cabinet was set-up at the national and provincial level. A global partnership meeting took place in September 2019, seeking support to the recovery and reconstruction plan. Losses were identified to be up to 3.2 billion US dollars but thus far, only a small percentage is available for reconstruction. Since the onset of the disaster, the United Nations Office for the Coordination of Humanitarian Affairs (OCHA) was leading the international humanitarian coordination system in Maputo and Beira.

The Ministry of Health (MoH) is leading the coordination for COVID-19 response, with the close support of WHO. IFRC and CVM are part of the COVID-19 national emergency committee, which also has the presence of different ministries, WHO, UNICEF and UNFPA. The Emergency Operations Centre (Centro Operativo de Emergencia-COE) meets in Maputo and provinces every week and ad-hoc, as necessary. The IFRC and CVM lead the Risk Communication committee and the Shelter Cluster.

B. THE OPERATIONAL STRATEGY

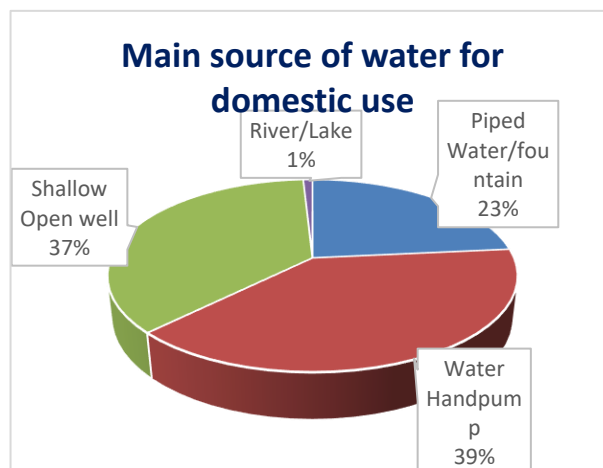
Needs Assessment and Targeting

During the reporting period, of January – March 2021, a Rapid Needs Assessment was carried out in the districts of Nhamatanda, Buzi and Mashanga, following the floods and cyclone Eloise in January 2021. Below, are some of the results for the [Nhamatanda Assessment](#).

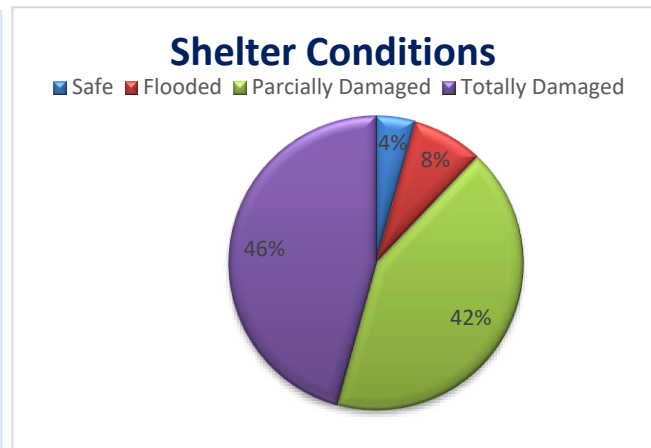
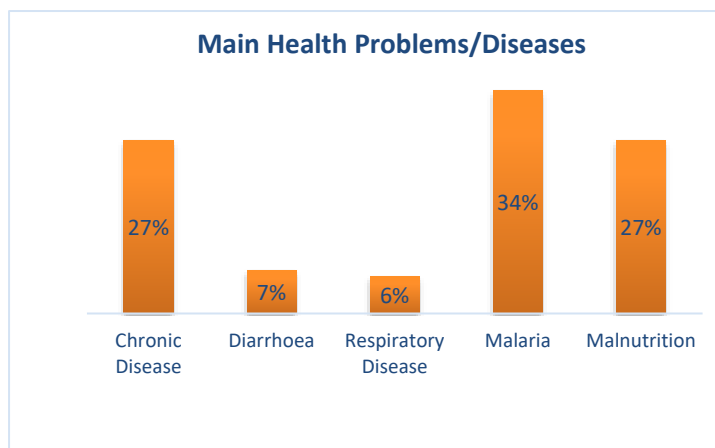
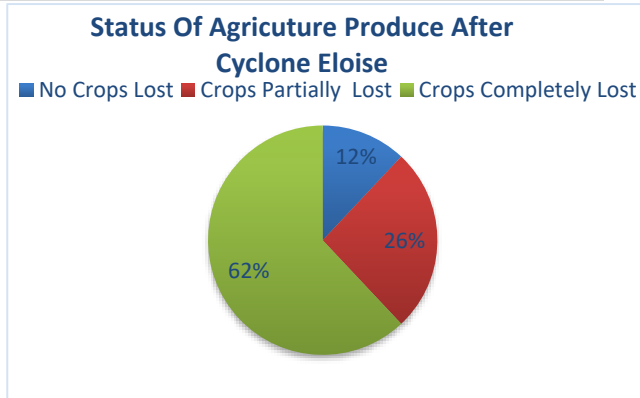
Gender	
Head of HH-Gender: <input type="button" value="v"/>	Total of heads of HH by gender:
Female	63
Male	53
Grand Total	116

Following the floods and cyclone Eloise, the IFRC and CVM, through cluster coordination participated in the OCHA-led [Multi-Sectoral Rapid needs Assessment in the Sofala and Manica Province, from January 23 to 27 January 2021](#). The Key finds of the Assessment are as follows:

- Across Sofala and Manica, over 30,120 houses were partially destroyed and 18,710 completely destroyed. As of 5 February 2021, there were 32 temporary accommodation centres, with over 26,000 people displaced. The overcrowding and poor living quality conditions increased concerns related to protection and disease outbreak.
- WASH infrastructure, including water sources were impacted by Cyclone Eloise. Many communities reported decreased access to water, lack of use of water treatment and increased open defecation practised, increasing the risk of AWD and Cholera. In some areas, critical health infrastructure is also not operating to ensure the early detection and treatment of water-borne diseases.



- Health infrastructure was impacted by Cyclone Eloise, but communities also reported lack of medical supplies and essential medicines. Several rural areas got cut off with no access to health services.
- Loss of household food stocks, loss of livelihoods, disruption of markets and increases prices of basic commodities were reported. Over 261,000 hectares were damaged ahead of the harvest season and over 458,000 people (291,452 in Sofala and 167,026 in Manica) were estimated to be in Crisis levels of food insecurity (IPC 3) from January to March 2021, according to the latest Integrated Phase Classification analysis.



Ensuring integrated programming between sectors

The International Federation of Red Cross and Red Crescent Societies (IFRC) Emergency Appeal response supports the Mozambique Red Cross (CVM) in providing immediate relief and post-disaster early recovery to the affected population across the Mozambique Central provinces. The response focuses on providing emergency shelter, water and sanitation (WASH), health, psychosocial support (PSS), with mainstreaming of protection, gender and inclusion (PGI) activities in all interventions. In the early recovery phase, the rationale of the intervention is to re-establish livelihoods, recover water and sanitation facilities, provide dignified and improved shelter as well as prevent outbreaks by reducing risks for the populations. This is done in a participatory manner, ensuring effective community engagement and accountability in the host communities.

An ongoing integrated approach is being conducted through 10 **CHMPs** (Community Health Mobilisation Points). The Protection Gender and Inclusion team conduct Safe Space activities such as Skills for Life sessions covering awareness-raising on GBV and PSEA themes. Sewing machines were bought for the Safe Spaces and dressing-making training sessions are ongoing for about 681 participants in the provinces of Sofala and Manica. Additional CHMPs are currently under construction by the Shelter team and 20 cyclone and flood-resistant structures are expected to be ready by the end of June 2021, across districts in Sofala and Manica Provinces. The CHMPs have also been crucial to support the MoH (Ministry of Health) in reaching out to populations that live in remote areas, distant from health centres. The Health Team coordinate CVM volunteers in the CHMP who work on Community-Based Surveillance, sensitising on prevention of diseases such as cholera, malaria, AWD, COVID-19, referrals of patients to the nearest health centre (in coordination with MoH staff), ORT for AWD patients, sharing data of patients attended in the CHMPs with the MoH staff periodically. The WASH team carries out hygiene promotion activities in the CHMP, highlighting handwashing techniques, presentations on water treatment, proper domestic waste disposal.

The Livelihoods and Health teams are coordinating a project to support vulnerable communities in regards to malnutrition.

Disaster Management measures are mainstreamed across sectors, and in an integrated way sectors are sensitised on environmental protection and climate-smart practices.

Ensuring local government participation The IFRC and CVM work hand-in-hand in support of the vulnerable communities in the cyclone areas, ensuring community and government participation is accounted for during the implementation of programs. Following the landfall of cyclone Idai, the government branch for Social Work, INAS (Instituto Nacional de Accao Social), conducted assessments to determine the impact on the communities throughout the neighbourhoods of Beira City. The results of the assessments showed that the worst impacted families were in the peri-urban including the neighbourhoods of Nhangau, Vila Massane, Nhangoma, Chota. Hence, to respond to this situation, CVM with the support of the IFRC, coordinated with INAS, local government and community authorities

to support a total of 2,555 of the most vulnerable families in these areas with the provision of multipurpose cash transfer programming in the communities of Nhangau and Nhangoma. The programme is funded by the British Red Cross. After some months of coordination, planning of the service provision and assessments, the registration and verification of beneficiaries was completed which included beneficiaries with and without formal documentation.

During the activation of the [Early Action Protocol \(EAP\) for cyclones](#), CVM coordinated closely with the government agency of national meteorological institute (INAM), making extensive consultations which led to a conclusive 'yes – we should'.

The IFRC and CVM have also been working closely with the Ministry of Health and Municipalities concerning activities carried out in the Health and Covid-19 programs. The INGD has been working together with CVM and IFRC in the Disaster Management program.

The rehabilitation and construction of water handpumps by the WASH team is closely coordinated with the local government agency of Public Works. The rehabilitated and newly constructed water points are handed over to the government, and the respective trained water committees are also presented to both the government authorities and the communities.

Coordination with Local Government and Authorities

According to a study conducted by the government agency for Social Work, INAS (Institute of Social Services), some of the worst impacted families in Beira following the devastating landfall of Cyclone Idai have been ones living in the peri-urban neighbourhoods of Vila-Massane, Nhangau, Nhangoma, Chota. The majority of families in these communities had their houses damaged, and most of them lost access to livelihoods, which consisted of small trade, part-time jobs in the city of Beira, and small businesses. The vulnerabilities of these Idai-affected communities were further exacerbated by recurring disasters such as floods, Tropical Storm Chalane, Tropical Cyclone Eloise, and COVID-19.

Moreover, the results of the Assessment by INAS revealed that young adults in peri-urban Beira City, are one of the most vulnerable groups, as majority of this group do not occupy themselves with daily activities and are prone to falling into negative behaviour such as alcoholism, theft, and prostitution. Hence, the findings of the INAS study, combined with a Labour Market Study carried out by the Livelihoods Team, were crucial in the identification of the communities of Nhangau and Nhangoma, to be supported with the cash program for social protection system, to a total of about 2,555 families. Additionally, 300 young adults to participate in vocational trainings were identified from the most vulnerable families in the 2 communities, of which 150 young are currently enrolled and attending classes in trainings of their choice including hairdressing, dressmaking, electricity, plumbing, construction.

Coordination with Community Leaders and Local Authorities

During the reporting period, community leaders, municipality and local authorities played a very important role in the implementation of health programs that were mainly related to community-based disease prevention. During health interventions, the community leaders and local authorities helped approach communities for community key messages, sensitisations in the prevention measures of malaria, cholera, AWD, COVID-19, hygiene promotion measures including handwashing. They worked together with the Health teams, volunteers and people in the community, mobilising and guiding all stakeholders, to facilitate solutions and think about the long-term health of the community and its people. The key aspects of the leadership role involved influencing group activities and coping with change especially in the COVID-19 and recurrent disaster context.



Coordination with Government INGD: Capacity Building in Disaster Management in Nhamatanda

Community Feedback and Complaints Mechanism

Sectors routinely conduct post-distribution monitoring (PDM) exercises after interventions, though the ability to conduct these has been hindered by COVID-19. A feedback system is in place through “[linha verde](#)” but IFRC and CVM programs will expand the channels open to receive feedback from the people served and those excluded.

Several focus groups discussions were held in the communities to assess people’s perceptions about the work of the Red Cross and the assistance provided to them. Any feedback or complaints from the communities are taken back to the responsible program delegates and solutions are sought to overcome those and acted upon.

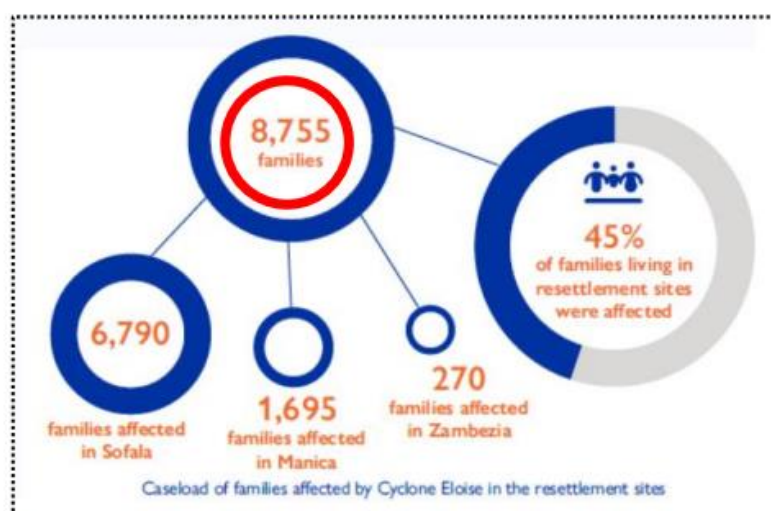
There was a restructuring of community feedback flowcharts in some provinces. These restructures were mainly to identify CEA focal points within CVM in different provinces and to brief them on how to collect and share feedback related to COVID-19. This information, collected and collated by CEA focal points, is shared frequently with the IFRC Africa Regional Office to be integrated in the wider IFRC Africa Region RCCE COVID-19 response. To date, 430 feedbacks have been collected. These were surrounding perceptions/knowledge of COVID-19. The feedback was then used to inform CVM’s RCCE content, and ensured that CVM engaged with communities by responding to rumours and misinformation with correct information, responding to questions that communities have about COVID-19, and using suggestions from communities to improve the response whenever possible.

In addition, new modalities of community interaction have been introduced. Opinion polls on people’s greatest concerns regarding COVID-19 on CVM’s social platforms, especially Twitter and Facebook, are being used in order to expand feedbacks channels.

Sectoral Needs analysis.

Since suffering the back-to-back shocks of Idai and Kenneth, Mozambique has been hit by other destructive storms, including Chalane in December 2020, followed by Tropical Cyclone Eloise in January 2021, which caused widespread damage and affected some 176,000 people.

Mozambique is facing a triple threat, namely insecurity/conflict, climate disasters, and the COVID-19 pandemic. According to the UN Secretary General, the Mozambican “people urgently need help”. In a statement released in March 2021, Mr. Guterres called on the international community to step up and support the humanitarian response plan for Mozambique, which needs \$254 million to respond to escalating humanitarian needs brought on by the crises.⁸



Global Shelter Cluster
ShelterCluster.org
Coordinating Humanitarian Shelter

Shelter

According to the Shelter Cluster⁹, as of December 2020, just prior to Tropical Storm Chalane, 92,749 persons were living in resettlement sites and most still continued to live in versions of Cyclone Idai temporary emergency shelters, now beyond degraded. The results from the assessment by the government agency of Disaster Management, INGD, in coordination with IOM, show that there was no significant displacement into the resettlement sites, following the Chalane Tropical Storm at the end of December, however, 4,938 families—about 24,690 people—in the resettlement sites had their tents and shelters destroyed or partially destroyed as a result of the Storm Chalane. When Eloise hit on 23 January 2021, it impacted 45% of these same Idai-affected families, which equates to 8,755 HH. Shelter Cluster reports that there is a huge gap between organizations’/ government’s / families’ capacity to build permanent/resilient housing and the high numbers of families still living in emergency shelters since Idai, not to mention the new families who have resettled following Eloise. The gap regarding shelter in the Idai resettlement sites is approximately 5,519 households in need of shelter support as of March 2021. There are also shelter needs and gaps among families who have been affected by the cyclones but did not move to resettlement sites. The gap among this group is estimated at 48,743 households in need of shelter support as of March 2021. The majority of Cyclone Idai ongoing permanent housing projects do not work with the communities outside the resettlement sites.

⁸ [UN News](#)

⁹ [Shelter Cluster Response: Jan-April 2021](#)

Over 98% of the families living in the resettlement sites originated from the districts of their resettlement site's location. Most of these people are living in emergency shelter and in need to improve to (at least) semi-permanent, transitional structures. Some of these resettlement sites have been approved as permanent sites by the government and local authorities, with HLP (Housing Land and Property) issues being resolved to improve structures and provide better, safer conditions to the families. The restrictions imposed by the declaration of the State of Emergency related to the COVID-19 pandemic delayed the capacity to undertake recovery activities. Shelter conditions are characterized by overcrowding, lack of privacy and dignity, poor ventilation, structural weakness, and inadequate flood protection. Approximately 80% of urban dwellers, some 4.6 million people, live in informal settlements in very dense, crowded and poorly ventilated housing conditions without access to basic services (water and sanitation, health care). These conditions cause a high risk for the spread of infectious diseases especially the COVID-19 outbreak.

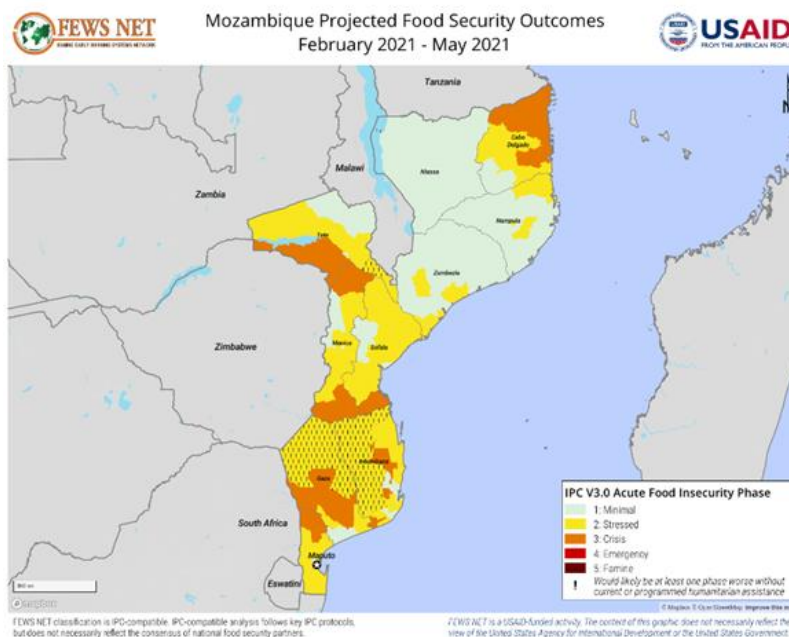
The seasonal storms have exposed weaknesses of traditional shelters in the cyclone risk provinces, which are non-resistant and built from locally available materials.

Livelihoods and Basic Needs

According to [fewes.net](#),¹⁰ there are large parts of Sofala province and parts of Manica and surrounding provinces where the impact of tropical storm Chalane and Cyclone Eloise are expected to delay the recovery efforts from 2019's Cyclone Idai. Some of these zones will face Stressed (IPC Phase 2) outcomes through May except for the most affected districts of Búzi, Muanza, Nhamatanda, and Beira that will be in Crisis (IPC Phase 3) due to the loss of assets and crops from flooding. Many households with seed stocks in these affected areas are likely to take advantage of the post-flood agroclimatic conditions and above-average residual moisture during the second season and harvest in June/July, improving food security outcomes to Stressed (IPC Phase 2). Competition for job opportunities is expected to increase, and poor and very poor households will have limited income for market purchases.

The COVID-19 pandemic is also a social and economic shock with direct impact on people's capacity to cover their basic needs and continue their livelihood activities. The pandemic has deepened food and nutrition insecurity especially in urban areas where poor households are likely Stressed (IPC Phase 2). Across the country, the number of people in need of emergency food assistance is likely to increase due to COVID-19 related impacts.

Following a rapid increase in confirmed COVID-19 cases and deaths since 1 January 2021, the government has tightened containment measures, including implementing a 9 pm to 4 am curfew for the greater Maputo area. Although South Africa has reopened its main borders, strict COVID-19 control measures and tighter border controls for immigrants continue to impact informal cross-border trade and labor migration negatively. The current COVID-19 restrictions continue to drive Crisis (IPC Phase 3) outcomes among the poorest households in urban and peri-urban areas, as income from casual work and small business remains below average.



Health and WASH

The reporting period from January – March 2021, was marked by the cyclone and rainy season, which is also the period when most cases of waterborne diseases are reported, according to the Mozambique epidemiological calendar. The Health Cluster¹¹ reports that the Cholera outbreak in Cabo Delgado has been ongoing since the report of the first cases in January 2020. By the end of the year 2020, Cholera outbreak continued in Cabo Delgado with a cumulative total of 3,669 cases and 40 deaths reported. In January 2021, a total of 1,528 cases were reported in Metuge, Chiuri, Pemba, Montepueaz and Ancuabe. From February to March 2021¹², a total of 1,461 new cases were reported in 5 districts, bringing the total number of cases to 5,510 cases and 54 deaths. The Health Cluster also reports that in Cabo Delgado, overall, from January to March 2021, malaria registered an increase of 30.3% compared to the same period last year, from 138,160 cases in 2020 to 179,967 cases in 2021. Round 1 of a pilot mass drug administration (MDA) for malaria was carried out in Metuge and Ibo district in February 2021.

¹⁰ [Fewes.Net](#)

¹¹ [Health Cluster- Mozambique Cabo Delgado Humanitarian Response-January 2021](#)

¹² [Health Cluster- Mozambique Cabo Delgado Humanitarian Response- February – March 2021](#)


In January 2021, the focus of the CVM and IFRC Health program was the CBHFA training for CVM community volunteers. In Tete 39 volunteers were trained in CBHFA of which 43 in Doa 15 and 14 in Mutarara, in Nampula province 40 volunteers were trained in Nampula City. In all provinces, Manica, Tete, Sofala, Zambezia and Nampula activities aimed at prevention acute watery diarrhoea and malaria increased as Mozambique is in the rainy season. The social mobilization activities being implemented are Household visits, presentations, and group discussions. In all activity's volunteers address acute watery diarrhoea/cholera, malaria and COVID19 in an integrated matter. 1483 HH visits were done and through these 30,603 persons were reached. 508 presentations were given and 17,317 beneficiaries were reached. In Sofala province, group discussions were organized on the prevention of Malaria and AWD and COVID19 and 433 beneficiaries were reached. At the six Community Health Mobilization Points in Beira, Dondo and Nhamatanda, information is provided on the prevention of diseases such as Malaria, AWD, HIV and on nutrition. 3,000 Chlorine bottles have been distributed to families in the provinces of Sofala (Buzi, Beira, Dondo, Nhamatanda and Caia) and Manica (Chimoio and Sussundenga). Health activities were implemented in 47 localities.

COVID-19 prevention activities continued and a total of 516,622 beneficiaries were reached through handwashing stations, 8,416 vehicles were disinfected at 44 points across the provinces. Volunteers in the provinces of Nampula, Sofala, Zambezia, Tete and Manica are doing RCCE using megaphones and sound systems on cars. Eight cars with sound system continue to circle through the provinces of the centre region to disseminate RCCE. Markets and hospitals were disinfected. Support has been provided to CVM and MoH on the implementation and improvement of COVID-19 prevention activities across the country.

In March 2021, the integrated Health team of IFRC and CVM conducted a monitoring and supervision visit to Tete and Manica provinces. In both provinces, a meeting was organized with the CVM provincial branch including the Health staff and executive council. In these meetings, the progress on implementation of the Health program was discussed as well as the remaining targets to reach and how to realize this in the months remaining until the end of the operation. In Tete province, the Health team visited as well the districts of Mutarara, Doa and Moatize to assess volunteer satisfaction and quality of implementation of activities. Moreover, the Health team has been busy improving the flow of finances from IFRC to CVM in order to increase implementation capacity. The team has been busy preparing the last Health training of the operation which will take place at the beginning of April 2021.

DETAILED OPERATIONAL PLAN

STRATEGIC AREAS OF FOCUS

	<h3 style="color: red;">Shelter and Essential Household items</h3> <p>Target: 168,140 People Reached: 140,217 Male: 67,304 Female: 72,913</p>	
Outcome 1: Communities in disaster and crisis affected areas restore and strengthen their safety, well-being and recovery through shelter and settlement solutions		
Indicators	Target	Actual
# of people assisted that receive emergency shelter assistance and awareness on safe shelter and good construction practices	168,140 people	148,344 people
# of volunteers trained	200 volunteers	130 volunteers
Output 1.1: Short term shelter and settlement assistance is provided to affected households		
Indicators	Target	Actual
# people/households provided with emergency shelter kits which meet the agreed standards for the specific operational context	10,315 HH	9,715 HH
# of HHs reached with other Shelter NFIs	20,489 HH	20,131 HH
Progress towards Outcome		
Recurrent Floods, Storms and Cyclones The reporting period, from January 2021 to March 2021, was marked by the second anniversary of cyclones Idai and Kenneth, which left significant destruction across provinces of Mozambique. The reporting period also included events and impact of the rainy season of 2020/21, as explained in detail in the Situation Analysis of the present report. The annual rainy season is expected to end by April 2021.		

As of December 2020, 92,749 people, who had been affected by cyclones Idai and Kenneth in 2019, are still living in resettlement sites and temporary emergency shelter put together post-Cyclone Idai. By their design, temporary shelters are not expected to last more than two years. The conditions of these temporary shelters have worsened and been further impacted by the rainy season of the reporting period. Specifically, the Shelter Cluster reported that approximately 8,755 households living in the Idai resettlement sites since 2019 experienced additional shocks from floods due to tropical storm Chalane (end of December 2020) and Tropical Cyclone Eloise (January 2021), causing further damages to their shelters. The Shelter Cluster reports that there is still a gap of 5,519 Idai-affected families in need of emergency shelter kits and essential NFIs as of March 2021. The majority of these households are in Buzi district, in the province of Sofala.



Cyclone Idai distributed tents and shelters: Blue tarps were distributed across Buzi resettlement for reinforcement just before the rains in December 2020

Concerning the above situation, there were some additional numbers of IDPs who moved to the already overcrowded Cyclone Idai resettlement sites during January 2021, due to the season's flooding and tropical rains, especially that of Cyclone Eloise. This has further exacerbated the vulnerability of the Idai-affected communities, especially during the COVID-19 pandemic.

According to the Shelter and NFI Cluster update on the Cyclone Eloise Impact and Shelter Cluster Emergency Response from April 2021, the majority of partners from the Idai Response have moved on, and those who remain lack funding to support the Idai-affected communities, as the majority of them reported to have simultaneously responded to the Insecurity Situation in the Cabo Delgado province. There is low interest from some local government as well as INGD in providing tarps, even if they are 2+ years old, as they request permanent housing solutions for this population and lack funding.

Internally Displaced Persons (IDPs) due to insecurity in Sofala, Manica and Cabo Delgado

Violent attacks in areas of the Gondola district of Manica, and Chibabava and Buzi districts of Sofala has triggered population movements within the Manica and Sofala provinces post-Idai. According to an assessment on Insecurity-induced Displacement in the Central Region of Mozambique, conducted by IOM last November 2020, the results identified an estimated 7,038 Internally Displaced Persons (IDPs), or 1,372 households. Shelter was also mentioned in the report as one of the main priorities for the IDPS.

The ongoing situation of violence and insecurity in the Cabo Delgado province intensified in the last quarter, increasing humanitarian needs and the implications for aid agencies working in the area. As of March 2021, about 670,000 people are reported to have been displaced due to the conflicts, and among the urgent needs are emergency shelters.

The following activities have been carried out during the current reporting period:

- During the month of January 2021, CVM, with the support of IFRC, supported a total of 500 families of IDPs fleeing the conflicts in the Province of Cabo Delgado with emergency shelters.
- CVM distributed blue tarps in December 2020 to 1200 families living across the existing resettlement sites of Guara Guara in preparation for the rainy season and they can be seen now across the site now, reinforcing Cyclone Idai tents and emergency shelters, minimizing the impact for these families.

Output 1.2: Technical support, guidance and awareness-raising in safe shelter design and settlement planning and improved building techniques are provided to CVM staff, volunteers and affected households

Indicators	Target	Actual
% of the target population provided with awareness orientation campaign who can build a safe shelter and identify good construction practices)	90%	Not yet measured

# of CVM volunteers trained in build back safer and all under one roof approaches	200 volunteers	113 volunteers
# of people reached with IEC materials and awareness sessions	51,575 people	51,575 people
# of HHs that received at least one training in build back safer (in emergencies):	10,315 HHs	8,015 HHs

Progress towards Outcome

Recurrent Floods, Storms and Cyclones:

According to the Post-Event Review Capability (PERC) Study, the millions of families across the cyclone-affected communities (Idai and Kenneth) live in non-resistant housing that they have built themselves using locally available materials. It is unrealistic to propose that they solely use more resistant building materials. Instead, more incremental and systemic support is needed.

Build Back Safer Techniques

During the reporting period, a cumulative of 113 volunteers were trained in Build Back Safer (BBS) techniques. It is a priority as the Idai project comes to a close, to ensure that CVM and their volunteers have capacity-building training in order to sustainably continue their activities.

Information, Education, and Communication (IEC) Materials

Post-distribution monitoring and evaluation of shelter assistance was completed in the communities through Focus Group Discussions.

CVM encountered challenges during their trainings for households on owner-driven build back safer repairs. At times the volunteers would not find the beneficiaries at their homes as community members prioritize their livelihood activities, such as agriculture, fishing and part-time jobs. These activities often require people to travel away from their households during the day.

Outcome 2: The target population has durable and sustainable shelter and settlements solutions through owner-driven approach

Indicators	Target	Actual
% of target households who have durable shelter that meet national and/or Cluster standards for recovery for the specific operational context	100%	Not yet measured

Output 2.1: The target population has durable shelter solutions

Indicators	Target	Actual
# of assessments conducted	1,500 HHs	1,915 HH
# of target households who have received durable shelter and housing assistance that meet agreed standards for the specific operational context (e.g., repair or reconstruction through cash/voucher/in kind)	1300 HH	221 HH

Progress towards Outcome

Very few partners are assisting with durable shelters in comparison to the significant needs and gaps. There is a huge gap between the capacity of the government and partners to build permanent/resilient housing and the high numbers of families still living in emergency shelters since Idai. The situation is worsened by the addition of the families who were resettled into the same resettlement sites following the floods, Tropical Storm Chalane, and Cyclone Eloise.

After Cyclone Idai, and with the coordination of the Shelter Cluster and other stakeholders in the country, many vulnerable families in various locations of extreme deprivation were encouraged to return back to their homes after receiving relief materials consisting mainly of food items. In Beira city, most families returned home especially to the neighbourhoods of Manga Mungassa, Chota, Matadouro. On the other hand, families from the flood-risk areas such as Praia Nova, were not allowed by the government to return home but were allocated to Mandruzi, Mutua and Savane resettlement sites, all in the district of Dondo. In Dondo district, IDPS at the Samora Machel accommodation and other centres were also given a choice to go back to their areas of origin on receiving food kits. Those who had their homes completely destroyed and could not go back were relocated to Mandruzi and Mutua resettlement sites. In the districts of Nhamatanda and Buzi districts, most of the families affected by the cyclones and flooding could not go back as majority of the shelters were completely destroyed. However, many families went back to their agricultural fields, which were distant from the resettlement sites, hence they had to build shelters close to their fields, which are mainly in flood-risk areas. Although most of these families that were encouraged to go back home had their shelters damaged, the Shelter Cluster reports that most Cyclone Idai ongoing permanent housing projects do not cover these communities.

Construction of durable shelters

From January to March 2021, 221 families were assisted with durable shelters in Chinamacondo, in Dondo District, in the province of Sofala. A total of 100 permanent shelters are planned for the district of Buzi, to be finalized by end of June 2021. 98 masons have been trained of which 80 in Chinamacondo, Dondo district and the remaining 18 in Buzi and are supporting in the building of permanent houses project in the Buzi.

Monitoring of housing (re)construction and peer to peer support

One challenge to the implementation was that the cyclone-affected communities located in remote areas within Sofala province, mainly in the districts of Dondo (Chinamacondo), Búzi and Nhamatanda, presented significant logistics challenges. This was especially true from December to January 2021, as the floods experienced during this period damaged the access roads.

Additionally, it is difficult to ensure that natural building materials are obtained from sustainable sources, for example offsetting by tree planting.

Output 2.2: Technical training and awareness raising sessions to target communities on build back safer shelter reconstruction/construction

Indicators	Target	Actual
% of the target population provided with awareness orientation campaign who can build a safe shelter and identify good construction practices	90%	Not yet measured
# of artisans trained in BBS shelter construction	120	98
# of households trained in BBS shelter construction	1,500HHs	1,372HH

Progress towards Outcome

According to the Post-Event Review Capability (PERC) study, one of the clearest entry points for increasing the resistance of housing is through the dissemination of more resistant building techniques.

As such, technical trainings on owner-driven build back safer techniques were given to specialized artisans. This equips the local masons to assist the local population in rebuilding efforts after the cyclone. CVM staff and volunteers were organized to ensure that they could participate in training on the Participatory Approach for Safe Shelter Awareness (PASSA) to prepare them to implement this approach in selected communities. Additional community training was given at the household level for Build Back Safer techniques.

A challenge in the implementation is to include information on Climate-Smart Practices within the shelter training.



Livelihoods and basic needs

Target: 65,740 people

People Reached: 62,110 people

Male: 29,813 people

Female: 32,297 people

Outcome 1: Communities, especially in disaster and crisis affected areas, restore and strengthen their livelihoods

Indicators	Target	Actual
# of people supported by livelihoods interventions target	12,767HHs (63,835ppl)	9,848HHs (40,240ppl)
% of target communities perceiving increase in their capacity to protect their livelihoods and recover in case of disaster	100%	Not measured yet
% of targeted individuals (beneficiaries and volunteers) that apply new acquired skills to strengthened and diversify livelihoods promoted by the program	70%	Not measured yet

Output 1.1: Vocational skills training and/or productive assets to improve income sources are provided to target population.

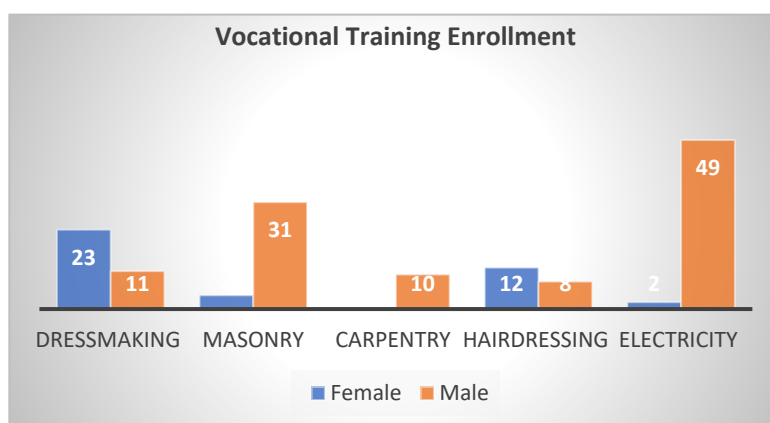
Indicators	Target	Actual
# Number of target population provided with new skills and knowledge to compete in the job market: Target	600 HH	150HH
# of loan and saving groups supported or created: target:	20 saving groups	21 groups
# of CVM volunteers trained: target:	50 volunteers	100 volunteers

Progress towards Outcome

Assessment results in peri-urban Beira by the government agency INAS (Institute of Social Services) revealed that young adults are one of the most vulnerable groups, as majority of this group do not occupy themselves with daily activities and are prone to falling into negative behaviour like alcoholism, theft, and prostitution. The preliminary results of a Labour Market Study, conducted by the FSL team indicates that builders, dressmakers, plumbers and mechanics professions are most in demand in Beira City and surrounding area. Out of the 2,555 households that will benefit from the Social Protection System, 300 have been targeted for vocational training assistance. The trainings are ongoing in the following areas Nhangoma and Nhangau.

Vocational Training

The IFRC and CVM FSL teams worked on the identification of young adults from the most vulnerable households to participate in the vocational trainings. The first 150 students out of the 300 to be assisted, went through a vocational aptitude test, which is an instrument designed to assess the abilities, interests, personality traits, and other factors deemed essential for success in a particular occupation. Following the test, the students were grouped as shown in the table below:



The vocational trainings were delayed due to restrictions on COVID-19, which forced schools to close for a considerable number of months. Although schools resumed activities, in 2021, the intake number of students was reduced due to the COVID-19 restrictions. The CVM and IFRC team intend to carry out vocational trainings for an additional 150 young adults until October 2021, with the kind support of British Red Cross. The IFRC Livelihoods team in coordination with the government agriculture extensionists also conducted 3 trainings to 992 farmers being assisted in Chinamacondo. The attendance of the 3 trainings is highlighted in the table below:

Description of Training Topics	District	Locality	Trainers	Participants/Beneficiaries		
				Male	Female	Total
Introducing Marketing Concepts	Dondo	Chinamacondo	Facilitators Field Supervisor	653	239	892
Selecting a Market Research Committee						
Market Planning (Production Estimation, Determining Profitability of the Different Value Chains)						
Conducting a Market Survey						
Selecting Best Products and Market Outlets						
Gendered Value-Chain Analysis and financial education						
Marketing as a Group	Dondo	Chinamacondo	Facilitators Field Supervisor District Agri Techs	112	205	317
Harvest (Data collection at individual farms FFS and field days or exchange visits)						
Post-harvest (storage facility, mechanism of drying vegetables)						
Woman empowerment and gender balance training	Dondo	Chinamacondo	Facilitators Field Supervisor	653	259	912
Groups, leadership and elections						
Social fund, savings and credit policies						
Development of association constitution						
First savings meeting and record-keeping						
First loan disbursement and record-keeping						
First loan reimbursement						

Village Savings and Loan Associations- VSLA

The FSL team continued to facilitate and train the Village Savings and Loan Associations (VSLA)s in Dondo district, Sofala province and Moatize district, Tete province. During the period of January to March 2021, six new groups were created, for a total of 21 loan groups. The VSLAs promote the creation of groups of people (especially women) who pool their savings to have a source of lending funds. Members make savings contributions to the pool and can also borrow from it. During the last quarter, the VSLAs led to significant improvements in financial inclusion among female members. The Loan and savings groups in Tete are composed of a total of 135 people, of which 60 are men and 75 women, with a total amount saved so far at 34,140.00MT (about CHF 525). In Chinamacondo, there are 15 Groups,

with about 314 people, of which 211 are men and 103 women, with an amount saved so far about 40,135.00MT (CHF617). Due to the floods and cyclone Eloise, the savings suffered significant decrease, since their livelihoods were affected drastically. Hence, the families did not have much to save since they had to prioritise their basic needs.

Coping with Floods and Cyclones

Food security for households in both program and comparison communities were negatively affected by floods and cyclone during the period. Pre-analysis shows that the program helps households to effectively offset the negative shocks due to loss of crops to floods compared to their peers in similar areas.

Women's empowerment

Women's empowerment also increased remarkably, as measured by Focus Group Discussions (FGD) with women on their influence over household decisions. The results of the FGDs show an increase of women who said they had influence on education and children's health-related expenses.

Training of Volunteers

In January a Training of Trainers (ToT) about plague and crop disease control was carried out and was replicated across the Farmer Field Schools (FFS) where farmers actively participated. The trainings were rolled out in the fields for sesame, groundnuts, beans and cassava, in an area of two Ha, prepared by a tractor. On 17 March, there was a ToT for volunteers in Beira.



Village Loan & Savings Association in Chinamacondo-Dondo District

Output 1.2: Basic needs assistance for livelihoods security including food is provided to the most affected communities

Indicators	Target	Actual
# of households supported to meet their basic needs (in-kind, e-voucher or through the social protection system)	2361HHS	Ongoing for 2,555HHS

Progress towards Outcome

The floods and cyclones experienced during the months of December 2020 and January 2021, especially in central Mozambique, resulted in damages of crops. By January 2021, over 219,000 hectares of agricultural land were reported to have been flooded which resulted in significant of crop damage, especially in the Idai-affected communities. Due to the flooding and population displacement, immediate food availability was limited, and so was the ability of affected families to cover their basic needs.

Furthermore, the presence of new pests such as the fall armyworm (FAW) is now creating additional food security concerns throughout the country. The fall armyworm (*Spodoptera frugiperda*), is an insect pest that feeds on more than 100 crop species, causing damage to economically important crops such as maize, rice, sorghum, various legumes as well as vegetable crops, pasture grasses and cotton.

According to government reports, in 2018 about 49 thousand tons of maize (staple diet of the country) were lost in Mozambique due to the plague. The Ministry of Agriculture (MASA) has reported FAW presence in the provinces of Gaza, Maputo, Manica, Zambezia, Tete and Niassa and has proposed a three-phase, \$1.6 million mitigation plan. The plan includes FAW monitoring, conducting biological and ecological studies, an education campaign targeted at smallholder farmers and production of educational materials, and purchase and distribution of chemical pesticides.

The IFRC and CVM Food and Livelihoods Team have been supporting communities including 7,800 farmers in the Cyclone affected areas of Sofala and Tete to adopt Conservation Agriculture techniques to create resilience of the target communities. To promote sustainability, the farmers are trained in organic farming techniques instead of the use of chemicals, such as pesticides and fertilizers, which are expensive for the vulnerable communities and have a higher environmental impact.

The high infestations of fall armyworm (FAW) combined with the recurrent storms and cyclones that Mozambique continues to experience can lead to severe and significant crop damage and yield loss. FAW was detected in Mozambique in January 2017, and to date there is still lack of experience within the country's agriculture sector in recognizing and treating FAW infestations.

Composition of Food Kit	
Product	Quantity
2-5 kg Rice	1
5L Cooking Oil	1
Beans	1
Canned Tomato paste	1
Sugar	2
1 kg Coarse Salt	1
Cans of Sardines	2
Spaghetti	1



Food kits for Distribution-
Moatize, Tete

Distribution

Distribution

Due to the flooding and displacement of population, immediate food availability was limited, and so was the ability of affected families to cover their basic needs. The Livelihoods Team provided food assistance to about 800 families in the 4 communities of Katsanya, Mitsanya, Chinguede and Nhankoma, in Moatize District, Tete Province. Food, seed and tool distributions were carried out through the use of e-vouchers. A total of 796 households were reached with a distribution of food, seeds and tools (2,500Mts for food and 3000Mts for seed and tools) during the month of March 2021, bringing to a total of 2 distributions carried out so far for the same communities. Note that all distributions were completed in accordance with the step-by-step guide provided by CEA&PGI.¹³

Post-Distribution Monitoring Study

A Post-Distribution Monitoring (PDM) was carried out in January 2021 following a food distribution conducted in December 2020 in the Tete Province. The food distribution method was using a smart card in which food items, seeds and agricultural tools were allocated to the card and given to each head of household (beneficiary). The initial plan was to distribute food items, seeds and agricultural tools to 800 households, but 4 beneficiaries had moved locations.

Below are some of the results of the PDM:

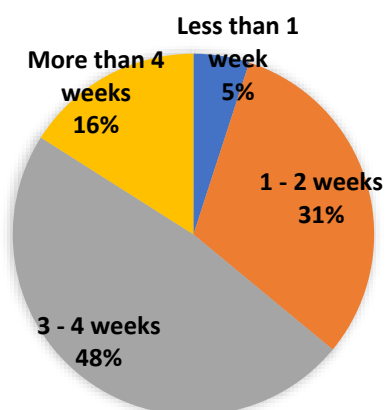
Regarding the food distribution, 63% said they did not need to ask for support in food assistance from friends or relatives. Results in the table below show that for 48% of the families, the food had fed their families for 3 to 4 weeks.

¹³<https://ifrcorg.sharepoint.com/:b:/s/CEAAfrica/EWbTAIwKx-VGmqEL94hHXwUBCD2SBNuj2Ewax5MXUKwplLQ?e=EiWP8x>

For how long have these items fed your family?

48% said between 3 to 4 weeks followed by 1 to 2 weeks at 31%

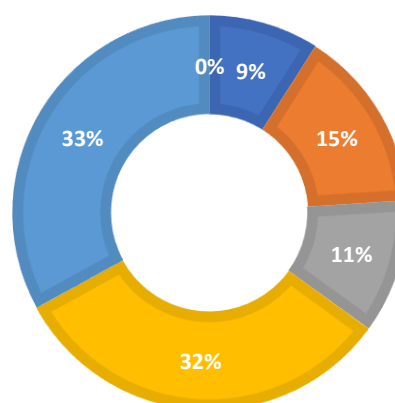
TIME FOOD LASTS



The top 2 chosen seeds out of the 5 options presented, were maize (33%) and beans (32%).

SEEDS MOST CHOSEN

■ Groundnuts ■ Sesame ■ Cowpea ■ Beans ■ Maize ■ Other seeds



The most popular seeds chosen were maize and beans as illustrated above, followed by sesame at 15%, which is mainly grown for export. From the seeds received, an average of **56%** in the 4 communities, **planted some of the seeds** received with Nhankoma being the highest (66%), and **26%** on average responded to having **planted all** the seeds, with Chinguède being the highest with 40%. Hence the FSL Team, in coordination with the government Agricultural Extensionist are sensitizing and giving technical support to the communities to ensure seeds are planted, and that good agricultural production is obtained, to minimize the food crisis experienced by the target communities. Asked about the quality of the seeds, 99% responded that they were satisfied. Before the distribution, 53% said that they used to obtain seeds from the black market, which did not have good quality due to the inappropriate storage conditions.

Overall 99% of the respondents were satisfied with the distribution.

Output 1.3: Household livelihoods security is enhanced through food production and income-generating activities restoration

Indicators	Target	Actual
% of target households that restore their food and income sources to pre-disaster level	75%	Not yet measured
# of farmers supported with assets	7,800HHs	9,379HH
# of farmers supported with training	2,000 farmers	1,792HH
# of fisherfolks supported	148 HHs	148HH

Progress towards Outcome

The Livelihoods team conducted a rapid assessment in the Farming Field Schools in the district of Dondo, Sofala province, to verify the impact of the floods and cyclone Eloise during the month of January. The pre-analysis showed that there were significant losses of cassava and beans crops. The cassava fields were still flooded, which caused losses of up to 80% of the crop. However, the groundnuts were more resistant to the floods and good production of the

crop is expected come the harvest season. During the month of February, the communities in the neighbourhood of Nhansassa planted sesame in the FFS.

The CVM/IFRC Livelihoods team continued to work with the district government agricultural extensionists (SDAE) in the monitoring of the FFS and to give technical support to the farmers. Technical support given to farmers includes:

- use of manures and organic and fertilizers, which is more sustainable for these communities compared to chemical-based products which are expensive and not affordable for majority of rural Mozambicans.
- implementation of crop rotation
- conservation agriculture, in which communities were sensitised to avoid burning bushes but instead use tools to clear agricultural land,
- how to control weeds
- seed rate spacing standard during planting
- sowing procedure

Both IFRC and government techs also support with verification of germinating power of the seeds.

The Livelihoods team promoted agricultural trade fairs in Moatize during the starting of the harvest season in March.

Trade Fairs

BENGA ADMINISTRATIVE POST, MOATIZE, TETE							
March 2021	Day 1	16/03/2021	9:00-12:00 hrs	Povoado 1	Chinguede	340	1 hr. 40 min
			14:00-17:00 hrs	Povoado 2	Missanha		
	Day 2	17/03/2021	9:00-17:00 hrs	Povoado 3	Catsanha	324	2 hrs 00 min
	Day 3	18/03/2021	9:00-12:00 hrs	Povoado 4	Nhankoma	136	2 hrs 30 min

In March 2021, the IFRC livelihoods team met with leaders of the FFS in Dondo district, to sensitize and train them in the creation of community nurseries to benefit the entire communities. The communities were also sensitised on the importance of working together on such projects for their own benefit. Hence, after identifying suitable plots in the FFS, the farmers began the project of creating the nurseries.

During monitoring of the FFS in March, the Livelihoods team observed that the cassava plants had recovered from the lack of calcium originated by the floods and cyclone Eloise. Moreover, the groundnuts were also of good quality.

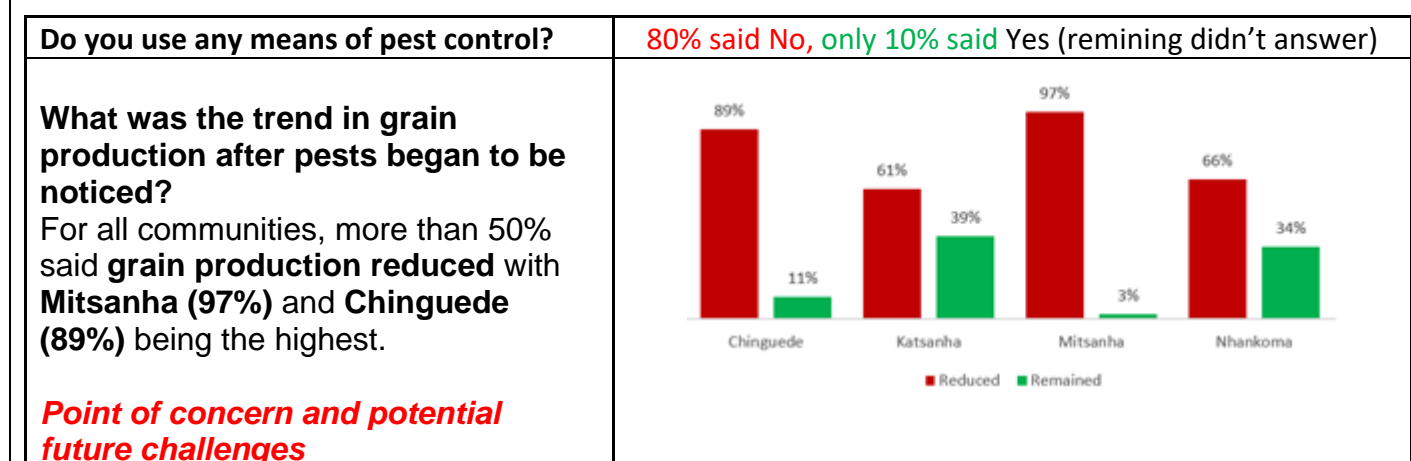
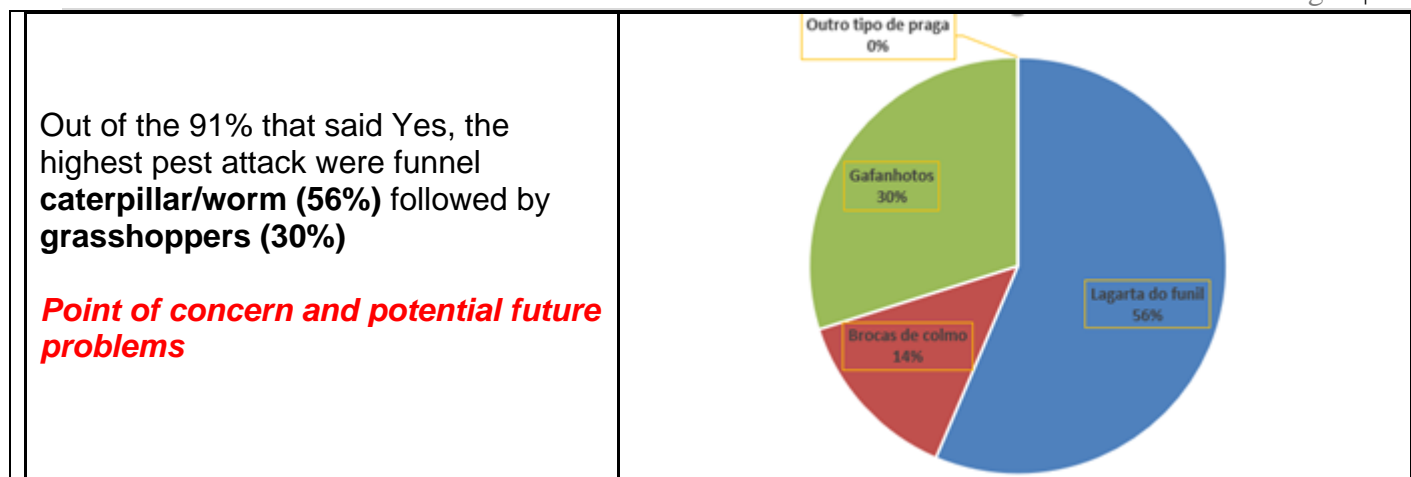
Food, Tools and Seeds Distribution in Tete

In March, distribution of food, tools and seeds was carried to about 800 families in 4 communities namely Katsanha, Mitsanha, Chinguede and Nhankoma, in the district of Moatize, in Tete province. Jointly, the various sectors including Livelihoods, PGI, CEA, IM, INAS were engaged in the training of volunteers and suppliers on different themes including the selection of Beneficiaries according to Vulnerability criteria (PwSN, Chronic Disease, elderly) and prevention of sexual exploitation and abuse. The communities were also sensitized on the existing complaints and feedback mechanism including the humanitarian helpline "Linha Verde" highlighting that aid is for free, and payment should not be made to be on the beneficiary list neither in monetary value nor with sexual favours. Theatre groups were used to illustrate to the communities how the distribution would be conducted. Redrose beneficiary cards were distributed and the CEA team, with the support of CVM volunteers conducted community-awareness sessions on the use of smartcards, underling the importance of card-keeping and non-sharing.

During the floods experienced in January 2021, the access roads to the communities in Chinamacondo, in Dondo district, were flooded which made it difficult for the teams to reach the target communities. The Livelihoods team continues to coordinate with other sectors especially the Disaster Risk Reduction unit to take actions to mitigate impacts of floods and cyclones, centred on community participation.

During the monitoring of the FFS by the technicians, pest attacks were identified on the sesame plants in the neighbourhood of Nhansassa. The technicians acted in intensifying the monitoring activities, highlighting the importance of continued use of techniques to prevent pests such as the use of organic pesticides.

The Tete PDM results for the food, tools and seed distributions carried in December 2020 below, showed an area of concern regarding low agricultural productivity due to the infestation of the armyworm and grasshoppers. More than 50% of the respondents reported a reduction in productivity due to the pests, and only 10% were using means of pest control. The Livelihoods team is working closely with the communal farmers sensitising on the techniques of pest control using organic methods.



Output 1.5: Households are provided with multipurpose cash grants to address their basic needs

Indicators	Target	Actual
# of households supported to meet their basic needs through the social protection system)	2300HHS	Ongoing for 2555 HH
Progress towards Outcome		
The Livelihoods teams carried out various activities between January and March, in preparation for the cash payments to a total of 2,555 families in peri-urban Beira City, in the neighbourhoods of Nhangau and Nhangoma. The Livelihoods Team conducted several coordination meetings held between IFRC, CVM, government agency for Social Work (INAS), Local authorities, the Beira Municipality, Community Leaders, and the communities of Nhangau and Nhangoma. Moreover, several coordination meetings were also held with the service provider for the Cash payments.		
Registration of Beneficiaries		

2,555 families, of which 2,136 families from Nhangau and 421 families from Nhangoma were registered in the Vodacom Mpesa system. Teams from the Livelihoods and other sectors including IM, CEA, and PGI adapted an integrated approach during the registration process. An integrated training was conducted in March for the volunteers, Vodacom-Mpesa service provider team, community leaders by the different sectors with different themes such as data collection and management, prevention of sexual exploitation and abuse (PSEA), gender-based violence, inclusion of people with specific needs, existing complaints and feedback mechanism including the humanitarian helpline “Linha Verde”. Capacity building was also given on customer service and to proceed when the beneficiaries get agitated. Key messages were also given on how to sensitise the communities on the importance of compliance with COVID restrictive measures of wearing masks and distancing, highlighting the special attention and priority to be given to people with specific needs especially elderly, pregnant women, people with disabilities, people suffering from chronic diseases. During the same training, the service provider Vodacom-Mpesa also trained volunteers, IFRC and CVM staff on the use of cash voucher payment system.

A total of 15 cell phones were bought by the Livelihoods program bring the total to 20 and distributed to the 20 volunteers who were engaged in the beneficiary registering process.

SIM Card Registration Assistance

During the registration process of the beneficiaries for the Social Protection System Project, there were more than 1500 beneficiaries who did not have Identification cards, majority claiming that they had lost them during the cyclone and floods that had hit the city of Beira. Although the IFRC and CVM in coordination with INAS, made the effort to convince the service provider Vodacom-Mpesa to register these beneficiaries into the Vodacom-Mpesa system, the effort was in vain since Vodacom-Mpesa responded it could not do so because it would be an illegal act. The IFRC and CVM resolved this by allowing for a verification process that was conducted at community level. On allocation of the SIM cards registered under the Federation, beneficiaries were requested to sign an agreement form verified by the community leader and CVM/IFRC personnel. The agreement form had the name of the beneficiary as per registration details, SIM card serial number allocated and mobile number assigned to the SIM card. This thus provided a formal record of the beneficiary.



Social Protection System project: Registration of Beneficiaries in Nhangau, Beira

Efforts to contact INAS were being undertaken by CVM to ensure that a mobile national identification registration process is conducted for the beneficiaries that lost their IDs during the cyclone disasters. This process is still in negotiation with the government. This process is mainly advocacy as the CVM/IFRC may not have control of the process.



Health

People Reached: 398,796

Male: 191,471

Female: 207,325

Outcome 1: Vulnerable people's health and dignity are improved through increased access to appropriate health services

Indicators:	Targets	Actual
people accessing appropriate health prevention and promotion service	480,122	398,796

# of people reached through COVID-19 (handwashing stations, HH visits, presentations, disinfection of public areas and transport) target	1,600,000	1,807,533 ¹⁴
# of CVM volunteers and staff respectively are trained	1050 vol & 23 staff	1,626 vol
Output 1.1: Communities are effectively supported by (CVM) to effectively detect and respond to infectious disease outbreaks		
Indicators	Targets	Actuals
# of ORP kits that are prepositioned	5 ORP	17
# of ORP that are established and operational	11 ORP	11
# of CVM volunteers are trained in cholera response	150	210
# of population is served by ORPs	50,000	40,149
# of CVM volunteers are engaged in CBS	900	300
# of people reached through CBS	120,000	113,723
Progress towards Outcome		
Cholera kits have been prepositioned in the aftermath of cyclone Idai and are in the Beira warehouse, ready for use in case of a cholera outbreak. 11 Oral Rehydration Points were set up and running during the cholera outbreak in Sofala province in 2019. In July 2019, Cholera activities were completed but 100 additional volunteers were trained on Oral Rehydration Treatment in the districts of Malema and Monapo during the cholera outbreak in Nampula province in order to prepare for possible future outbreaks. During the reporting period no volunteers have been trained in ORP/ORT nor have any ORPs been set up as there was no cholera outbreak. In case of an outbreak, there are over 10 trainers who could train volunteers and set up at least 10 ORPs based on the needs.		
Output 1.2: Community - based disease prevention and health promotion is provided by CVM to target community		
Indicators	Targets	Actuals
# of Community Health Mobilization are operational.	20	6
# of CVM volunteers are equipped.	900	300
# of volunteer mobile health brigades supported.	100	25
# of children are vaccinated (supported in vaccination)	5,000	224
# of maternal and Infant Health care sessions provided	3,000	59
# of people reached through HH visits on H&DP&P	311,600	324,033
# of localities reached with social mobilization & risk communication	70	60
Progress towards Outcome		
During this period, the Health team divided its time between the emergency response to Cyclone Eloise and subsequent flooding's, COVID-19 and Cyclone Idai response. For the Cyclone Idai program, the priority was Community-based Health and First Aid (CBHFA) training for CVM community volunteers. In Manica 104 volunteers were trained in CBHFA of which 30 were in Sussundenga, 41 in Gondola and 33 in Macate. In all provinces (Manica, Tete, Sofala, Zambezia and Nampula) activities aimed at the prevention of acute watery diarrhea and malaria increased as Mozambique is in the rainy season. The social mobilization activities being implemented are household visits, presentations, and group discussions.		
It is worth mentioning that volunteers address acute watery diarrhoea/cholera, malaria and COVID-19 in their weekly activities an integrated approach. There were 2,556 HH visits done and through this a total of 37,889 persons were		

¹⁴ The number of people reached through Covid-19 activities is higher than the target because CVM with the support of the IFRC has been the major partner of the Government, Municipalities and local authorities providing the much needed services of disinfection of public areas and transport, handwashing points etc, that very few partners are providing in the target communities.

reached. A total of 3,302 presentations were given and 37,5079 beneficiaries were reached through them. In Sofala province group discussions were organized on prevention of Malaria, AWD, and COVID-19 and 25,071 beneficiaries were reached and an additional 122 in Zambezia province. The health team has distributed 3,000 Chlorine bottles to families in the provinces of Sofala (Buzi, Beira, Dondo, Nhamatanda and Caia) and Manica (Chimoio and Sussundenga). Health activities were implemented in 47 localities.

Output 1.3: CVM develop the capacity to assess and provide relevant health care support to communities & vulnerable HH

Indicators	Targets	Actuals
# of CVM technicians are effectively trained	23	24
# of CVM volunteers are effectively trained	900	880
# of community leaders are effectively trained	500	258
# of disease outbreak contingency plans are developed	20	3

Progress towards Outcome

This period was marked by continued support on trainings for 21 Health technicians in the following locations:

- Sofala Province: Beira, Buzi, Dondo, Nhamatanda, Caia. Manica: Sussundenga, Macate, Gondola.
- Tete Province: Doa, Mutarara, Moatize. Zambezia: Maganja da Costa, Morrumbala.
- Nampula Province: Nampula, Mogovolas

It was equally marked by continuous monitoring and supervision for 91 CVM volunteers who had attended a 5-day CBHFA training in Sofala (Buzi & Caia) and Tete (Moatize) trained in December 2020. A number of other relevant achievements are equally to be noted namely:

- Continued monitoring for 71 volunteers on CBHFA in Sofala (Buzi & Caia) and Tete (Doa & Mutarara) trained in November 2020
- Nampula province: 40 new volunteers were trained in Nampula City
- Tete province: 39 new volunteers were trained in CBHFA of which 43 in Doa 15 and 14 in Mutarara

In all provinces (Manica, Tete, Sofala, Zambezia and Nampula) activities aimed at prevention acute watery diarrhoea and malaria increased as Mozambique is in the rainy season. The social mobilization activities being implemented are household visits, presentations, and group discussions. In all activities volunteers address acute watery diarrhoea/cholera, malaria and COVID-19 in an integrated matter. In total, 1,483 HH visits were completed and through these 30,603 persons were reached. A total of 508 presentations were given and 17,317 beneficiaries were reached.

In Sofala province group discussions were organized on prevention of Malaria, AWD, and COVID-19 and 433 beneficiaries were reached. At the six Community Health Mobilization Points in Beira, Dondo and Nhamatanda information is provided on the prevention of diseases such as Malaria, AWD, HIV and also about nutrition. There were 3,000 Chlorine bottles distributed to families in the provinces of Sofala (Buzi, Beira, Dondo, Nhamatanda and Caia) and Manica (Chimoio and Sussundenga). Health activities were implemented in 47 localities.

Output 1.4: Communities are supported by Mozambique Red Cross (CVM) to effectively respond to psychosocial needs.

Indicators	Targets	Actuals
# of people that are reached with PSS activities.	60,000	72,529
# of people that are reached with PFA and stress management sessions	6000	930
# of people attending skills for life sessions (children in safe spaces)	6000	186 children

Progress towards Outcome

From January to March 2021, the IFRC Mental health and psychosocial support (MHPSS) team continued to provide psychosocial (PSS) and psychological first aid (PFA) support to previously identified individuals hit by tropical Cyclone Eloise in January. An additional 20 staff from 7 provinces benefited from a PSS Training of Trainer (ToT) training to reach further areas in PSS activities.

In Manica province, the PSS sector, represented by the Provincial Technician of Sofala, provided ToT for the Health Technician, Provincial Secretaries, and other CVM Technicians in Mozambique at the CVM Training Centre in Chimoio, addressing Psychological First Aid, Stress Management, and Referral of Cases identified in the Community for Health (the MHPSS - component is linked to PGI).



Water, sanitation and hygiene

People Reached: 407,539 people

Male: 195,619

Female : 211,920

Outcome 1: Immediate and sustainable reduction in risk of water borne and water related diseases in targeted communities

Indicators	Targets	Actuals
100% of (350,000) population with access to safe water	100%	69%
50% of (350,000) people with adequate sanitation facilities	50%	81%

Output 1.1: Continuous assessment of water, sanitation, and hygiene situation is carried out in targeted communities

Indicators	Targets	Actuals
# of site and community assessments covering 30 communities done (# of assessments)	30	54
# of CVM volunteers trained	200	176

Progress towards Outcome

A total of 168 water handpumps were rehabilitated as of the end of March 2021. In this regard, 36 volunteers were trained in WASH data collection in the Tete Province. Also, seven new water committees were set up and trained in Sofala to ensure continued maintenance and proper use of rehabilitated water points. A new tender was issued in March to construct new latrines in Dondo district and is expected to be completed before the closure of the current emergency appeal.

Good handwashing techniques, hygiene promotion, and household monitoring visits in respective districts were continuously implemented from January to March 2021 to achieve the set target.

The CVM and IFRC WASH team continued participating in the WASH Cluster meetings.

Output 1.2: Access to safe water through community managed water sources is provided to target population with support of CVM

Indicators	Targets	Actuals
# of population with access to safe water	104,800	74,148
# of water distribution points are provided	161	124

Progress towards Outcome

Based upon coordination recommendations from the WASH Cluster meetings, where CVM, IFRC and the local government are represented, seven new water handpumps were rehabilitated to serve about 2,450 people in the district of Dondo. Six sanitation facilities in the same area were completed in schools during the reporting period. In Mutua 20 latrines were planned for People with Special Needs (PwSN), and tenders were launched for the second phase of latrines in target schools in the same district. The latrine construction is planned to finish in June.

Monitoring continued in this quarter to ensure proper use of the 12 water handpumps rehabilitated during the last quarter of 2020 in the provinces of Sofala and Tete, providing access to safe water to about 8,806 people. Furthermore, seven water committees were created in coordination with the CEA and PGI teams. The WASH teams equally ensured the set up and operationalization of trained Water Committees.

Output 1.3: Access to safe water through community managed water sources is provided to target population with support of CVM

Indicators:	Targets	Actuals
-------------	---------	---------

# of people provided with excreta disposal facilities	25,570	20,606
Progress towards Outcome		
<p>The construction of 20 latrines for PwSN (People with Special Needs) has been approved for in Mutua (Dondo District). The WASH team completed and shared a presentation note with local leaders, volunteers and beneficiaries based on an assessment conducted earlier in October—December. These households were selected in order to work on change of strategy for the sanitation project, to be adapted to implementation needs.</p> <p>The PGI, PSS and CEA teams have been participating in this activity to ensure that people with special needs have access to WASH facilities like the rest of community members. The WASH sector jointly with PGI conducted assessments and identified people with special needs. Then focus group discussions comprising of the community, local leaders, government officials and persons with special needs, came up themselves with the type of facility that meets their needs.</p> <p>This approach will not only promote inclusion but also reduce the problem of open defecation, which is one of the biggest challenges in the target communities. The construction of the latrines will also create an income-generating activity for the local artisans. Beneficiary households also benefit from a Skills for Life package which involves vocational trainings such as dress-making skills for income generation. The vulnerable families include people with disabilities and chronic diseases, and the elderly are given full support in the construction of their latrines. The program aims to select and train local artisans for cement block production, dome slab production and pit construction in Miquejo. The artisans will support 132 families to build their own latrines and families will contribute with digging the pit, sand and construction of superstructure.</p>		
Output 1.4: Hygiene promotion activities are provided by Mozambique Red Cross (CVM) to target population		
Indicators:	Targets	Actuals
# of population reached with Hygiene Promotion activities	250,000	HPA Idai -250,000 ppl HPA Covid-268,031 ppl¹⁵ Total-518,031 ppl(i)
% of (250,000) engage in improved safe hygiene	50%	100%
# of CVM volunteers involved in Hygiene Promotion activities	200	274
Progress towards Outcome		
<p>Like for the previous quarter, hygiene promotion awareness activities continued in Dondo and Beira districts, combined with health promotion activities such as awareness raising activities. Activities were scaled up in Dondo to Moatize districts in Sofala and Tete provinces, respectively, since the reporting period of January – March 2021 was marked by rainy and cyclone season. According to the Health epidemiological calendar, the same period is also the waterborne diseases season, promoted by stagnant waters from the rain and floods.</p>		

The floods experienced in the Idai-affected communities during the month of December 2020 throughout January 2021, brought challenges of access to clean water, and the stagnant waters created breeding spaces for mosquitoes. Hence, the communities were at risk of outbreak of diseases such as cholera, acute diarrhea and malaria. Moreover, crowded accommodation centres due to additional IDPs into the same Idai resettlement sites has further exacerbated the vulnerability of these communities to Covid-19.

Thus, the implementation of hygiene promotion was critical to prevent outbreak. The main activities implemented were household visits, community and school sessions on topics and demonstrations on water treatment, handwashing, domestic waste disposal, sensitisations on preventive measures on cholera, acute watery diarrhoea, malaria, covid-19, using megaphones and distributing respective IEC materials, across communities. Today there are 95 volunteers involved in WASH activities and distributed as follows: 14 volunteers in Savane, 15 volunteers in Mafambisse, 44 volunteers in Mutua, 22 volunteers in Ngupa and Subida. A total of 250,000 people (additional 268,031 people related to Covid-19 reported under the Health sector) have been so far reached to date and a total of 274 volunteers have been trained since the start of the project.



CVM volunteers are engaged in the supervision of the public tippy tap for handwashing in Mutua, installed next to each rehabilitated water handpump. The tippy taps have been installed near the handpumps across the whole neighborhood to encourage everyone to wash their hands before using the water infrastructure.

Output 1.5: Hygiene-related goods (NFIs) are provided to the target population along with training on how to use them

Indicators:	Targets	Actuals
# of HH provided with essential hygiene items	12,568	12,568
# of women provided with menstrual hygiene kits	5,845	9,776 women
Progress towards Outcome		

In Sofala, the Safe Space Program for Women and Children and Recreational Activities for Children continued as a way of ensuring social interaction for women and children, to provide psychological support and provide greater resilience, and response to crisis situations. Menstrual hygiene kits were distributed during the programme in the reporting period.



Protection, Gender and Inclusion

People Reached: 127,520

Male : 61,210

Female: 66,310

Outcome 1: Communities have identified the needs of the most vulnerable and particularly disadvantaged & marginalized groups due to inequality, discrimination, or exclusion

Indicators:	Targets	Actuals
# of people in need receiving PGI support services	120,000	127,067
# of CVM staff and volunteers trained and mobilized	1,200	1,712

Output 1.1: CVM programmes ensure safe and equitable access to basic services, considering different needs based on

Indicators:	Targets	Actuals
# of people reached with awareness raising on gender equity on diversity and inclusion	30,000	32,038

# of people reached through MHM session	30,000	22,453
# of people trained and mobilized on PGI topics	1,200	1,712
% of people identified in need are referred to specialized services	50%	Not yet measured
Progress towards Outcome		
<p>In Sofala, the Safe Space Program for Women and Children and Recreational Activities for Children continued, as a way of ensuring social interaction for women and children, to provide psychological support and provide greater resilience and response to crisis situations.</p> <p>Under the Basic Case Management approach, the PGI CVM and IFRC team continued referring¹⁶ people in need to support using referral mechanisms linked to gender-based violence (GBV), sexual abuse, mental illnesses, and others. Referrals are made for government institutions in the public sector (Police, Social Welfare) and for Health (Mental Health inclusive, Prosecutor's Office). Referrals are also made to Non-Government Organizations such as UNICEF, Save the Children, UNFPA, and Light for the World, among others.</p>		
Output 1.2: Emergency & recovery response operations prevent and respond to SGBV and all forms of violence against children Promoting safer communities		
Indicators:	Target	Actuals
# of people access SGBV & Child Protection behavioural change awareness sessions	30,000	42,704
% of targeted adolescent girls who join life-skills support groups	30%	Not yet measured
# of CVM volunteers and staff trained on PSEA and Child Protection	800 volunteers & 60 staff	1,372 volunteers 103 staff
# of PSEA and Child Protection Policies developed	2	3
Progress towards Outcome		
<p>The PGI CVM and IFRC team continued providing their services to the communities of Sofala Province. The trainings on Prevention of Sexual Exploitation and Abuse (PSEA), Child Protection and GBV are a necessity, since the TOT training on these policies is currently being carried out at the National Society level (CVM) throughout the entire National territory, which is an added value for the replication of the trainings until the last volunteer. If there is, in this sense, Financial, Personnel and material resources capacity, trainings can take place, mainly in the places where the PGI CVM&IFRC does not operate yet and in areas with a high level of violence and premature marriages.</p>		
Output 1.3: Mozambique Red Cross CVM) educational and advocacy programmes raise awareness on humanitarian challenges, cultivate humanitarian values and develop relevant interpersonal skills		
Indicators:	Targets	Actuals
# of people are reached through IEC campaigns & Trainings	30,000	18,531
# of CVM stakeholders sensitized and involved in CNVP issues	4	4
Progress towards Outcome		
<p>In order to continue the awareness-raising on Connecting Natural Values and People (CNVP)-related issues such as discrimination, violence and exclusion, at community level, PGI teams worked on the production of a video related to Non-Violence during the reporting period which was finalised in December 2020. We sensitize and make communities aware of the prevention of early marriages (Child Protection) and Gender Based Violence, showing that this practice is wrong and is punishable by law. It also showed the complaint mechanisms available including the police and Government Institutions.</p> <p>The video narrates the story of a father who tries to marry his girlchild to an older man to pay for his debt, but his wife does not accept the situation and reports him to the authorities. The story raises very common Child Protection issues found in most communities in the country. The main object of the video is to raise awareness that Child Marriage is a crime in Mozambique and encourage the population to use the existing complaints and feedback mechanisms like the</p>		

¹⁶ Referrals to government institutions - Public sector (Police, Social Welfare, Health - Mental Health inclusive, Prosecutor's Office; others). Referrals are also made to other NGOs, such as UNICEF, Save the Children, UNFPA, Light for the World, among others.

police, social action etc. The video equally helps in raising awareness on Connecting Natural Values and People (CNVP)-related issues at the community level across Mozambique. The video has been disseminated on relevant platforms such as WhatsApp, Facebook, Youtube as per the links below:

Youtube: <https://youtu.be/XGzNM9Pc2Ks> Facebook: <https://fb.watch/5pZU4xAu38/>



Disaster Risk Reduction

People Reached: N/A

Male:

Female:

Outcome 1: Communities in high-risk areas are prepared for and able to respond to disaster

Indicators:	Targets	Actuals
# of people reached through DRR & CCA projects	57,500	N/A
Output 1.1: Communities take active steps to strengthen their preparedness for timely and effective response to disasters		
Indicators:		
# of CVM community volunteers trained in disaster response, preparedness	200	1,162 vol
Progress towards Outcome		

Mozambique is prone to the impact of various natural hazards such as cyclones and floods. Communities have an interrupted and slow process to recovery because of the recurrent hazards. The implementation of community-based Disaster Risk Reduction (DRR) activities remained affected by challenges and internal and external constraints. Hence, during the reporting period, the planned community-based activities were not rolled out. Nevertheless, the NS, with the support of the IFRC, strived to integrate DRR principles and measures into other sectors like FSL.

Towards the end of February 2021, a Disaster Management (DM) Delegate came on board to support the NS in planning and initiating the implementation of DRR activities and adapting a Program Strategy suited to the context and considering the surrounding constraints.

Outcome 2: Communities in disaster affected areas adopt climate risk informed and environmentally responsible values and practices

Indicators:	Target	Actuals
% of recovery programmes incorporates DRR & CCA approach	70%	Not yet measured
Output 2.1: Contributions to climate change mitigation are made by implementing green solutions		
Indicators:	Targets	Actuals
% of programs adopt climate change mitigation measures	70%	75%
# of communities engage in environmental mitigation projects	10	7
Progress towards Outcome		

Majority of the communities in rural Mozambique rely heavily on natural resources as the main sources of livelihoods. Some of the most common and harmful practices include:

1. tree cutting for charcoal production, firewood (energy) for cooking, and wooden poles for building shelters
2. burning bushes for land clearing to practice agriculture, and hunting of small animals as source of food
3. fishing with mosquito nets, which harmful for the marine life as it kills algae and small creatures.

Continued efforts have been made to integrate DRR principles and measures in sectors, promoting environmental sustainability and adaptation to the impacts of climate change.

Mangrove Plantation

Several ongoing FSL projects are promoting environmental sustainability in the provinces of Sofala and Tete. After a series of focus group discussions and consultations with fisherfolk committees and local authorities, the IFRC FSL team together with CVM designed a project to plant mangroves in the locality of Praia Nova, Dondo District.

Community Orchards and Forests

During the month of February, the IFRC and CVM FSL team facilitated community meetings in Chinamacondo, Dondo District. These meetings focused on discussing deforestation challenges brought about by the massive cutting of trees for charcoal – one of the main livelihood sources in the area. During the discussions, it was agreed that planting trees should be a priority, and Associations were created to manage community orchards and forests.

Sensitization on Environmental Sustainable Solutions

In addition, the FSL team sensitised communities on the importance of environmental education and adapting local and environmentally sustainable solutions. In coordination with the government, FSL team technicians assessed suppliers in Dondo, and the quality of fruit trees supplied such as cashew, citrus, eucalyptus, and pineapples, among others.

Integration of eco-based DRR into different sectors

Following an integrated approach, the different sectors have supported activities where eco-based DRR is considered such as Conservation Farming and Fishing with environmentally friendly fishing nets and tools under FSL and Build Back Safer artisans project which involved local artisans in more resilient shelter construction under Shelter.

Income generating activities have empowered communities, especially women-headed households, who are able to address the basic needs of their families and save some funds through the Village Savings and Loan Associations.

Output 2.2: Community awareness raising programs on climate change risks and environmentally responsible practices are conducted in target areas

Indicators:	Targets	Actuals
# of RC/RC climate smart initiatives coordinated and fostered	4	2
Progress towards Outcome		

As aforementioned, community based DRR and CCA activities remained affected by various challenges and constraints. Hence, during the reporting period, community-based activities on DRR and CCA have not been carried out. Nonetheless, initial discussions were conducted to identify and map existing DRR and CCA tools and materials, with the National Institute of Disaster Risk Reduction of Mozambique (Instituto Nacional de Gestão e Redução do Risco de Desastres/INGD) and other RCRC Movement Partners who implemented previous DRR and CCA projects in Mozambique. These materials will be utilized in raising community awareness on climate change and DRR in target communities.

ENABLING ACTIONS

Strengthening National Societies

Outcome S1.1: Mozambique Red Cross (CVM) has the necessary legal, ethical, and financial foundations, systems and structures, competences, and capacities to plan and perform

Indicators:	Target	Actual
% of CVM staff acknowledging improvements in its management systems	90%	Not yet measured

Output S1.1.4: Mozambique Red Cross (CVM) has effective and motivated volunteers who are protected.

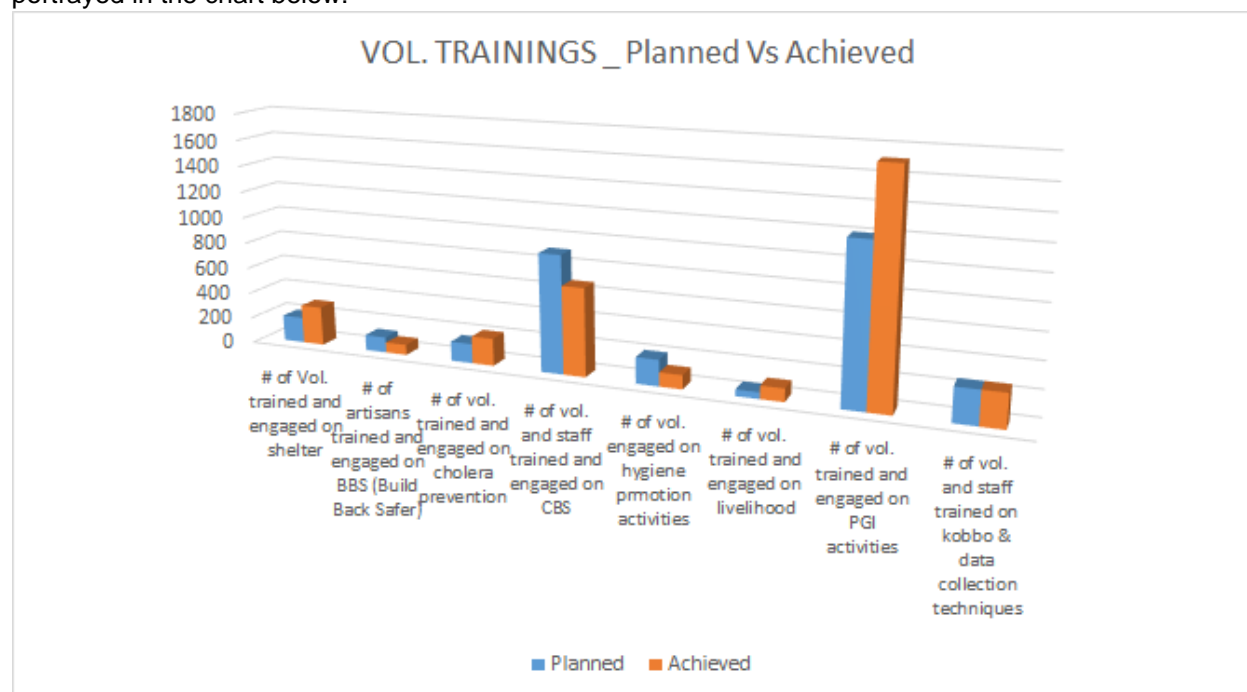
Indicators:	Target	Actual
# of CVM volunteer adequately trained and insured	5,500	5,500 Trained 2,000 Insured
Progress towards Outcome		

As of end of March 2021, CVM had maintained the 2,000 volunteers' insurance out of the 5,500 volunteers overall trained and engaged in different activities. In this period the NSD has also been working on Terms of Reference aiming at seeking proper expertise that can help in digitalization of the volunteers' database and policy that started in April 2021. This will facilitate access to institutional information both at Branch and HQ level, including communication with key stakeholders and donors.

Throughout the 11 branches where CVM has active committees and highly committed volunteers who support the current Ida and Eloise operations. The same volunteers are engaged on PNSs funded programs in some branches and they continue to work tirelessly for the well-being of their communities, giving a great example of resilience, and dedication to the Movement principles of humanity and voluntary work. Since the start of the Idai operation, volunteers have been routinely involved through a diverse range of activities, from promoting healthcare to protecting those in need,

recovering access to safe water, improving shelter conditions, providing psychosocial support to those severely affected by the cyclone, etc. Volunteers are also the entry point for community engagement and participation, ensuring the voices of their communities are heard and taken into consideration for programmatic decision-making.

During Idai and Kenneth Appeal operation, several volunteers were trained across the sectors to support the programmatic needs in the field. A proper exit strategy will be designed to make sure the database of these volunteers is well in hand of the NS to guarantee sustainability and availability of human resources beyond the appeal timeframe as portrayed in the chart below:



Output S1.1.6: National Society has the necessary corporate infrastructure and systems in place

Indicators	Target	Actual
Branches and NHQ have solid financial accounting capability	4	1
CVM has a clear and feasible plan for clearing debts	1	Partially
CVM branches assisted with repairs/upgrades/office equipment	4	1
CVM embarked with forward-looking HR strategy & related PoA	ongoing	40%
Progress towards Outcome		

Since the last quarter of 2020, IFRC is engaged in several capacity-building aspects to CVM including digital transformation and inclusion. In December 2020, 14 computers were donated to the NS health personnel to perform activities at the provincial and district level in selected branches. In the same vein, 24 tablets were additionally donated to CVM staff for Kobo data collection especially on COVID-19. The IFRC IT team has set up a server to allow proper management of data at the HQ level. In addition to this, the IFRC has provided 115 licenses to upgrade towards Microsoft 365 and CVM has migrated from the old system to Microsoft 365. Key staff were trained on how to operate this new software system as well.

Strengthening CVM financial management, systems and procedures is one of the IFRC highest priority this year. An NSD delegate has arrived in the country in February and he will be working closely with the finance delegate to support CVM in tackling financial management and improvement issues, including accounting backlogs, financial reporting and external audits, as well as building more robust systems and capacities at national and branch levels. This capacity building will also focus on training relevant staff at HQ and Branches.

Output S1.1.7: N S capacity to support community-based disaster risk reduction, response & preparedness is strengthened

Indicators:	Target	Actual
Population reached through DRR & CCA projects	356,398	ND

# of staff and volunteers trained on DM & DRR	1,100	1,162
Progress towards Outcome		

The NDS delegate who arrived in Maputo in February is working hand-in-hand with CVM in developing a realistic and achievable plan as far as Disaster Risk Reduction (DRR) and Climate Change Adaptation (CCA) at the country level is concerned. A formal Preparedness for Emergency Response (PER) review has been carried out and it completed in February. This has led a concrete plan of action to strengthen the NSs institutional response capacity at all levels. The process was initiated in late 2019 to assess CVM strengths, weaknesses, and opportunities against all aspects of institutional preparedness, in consultation with key internal and external stakeholders.

The DRR plans as well as other priority areas will be reflected in the New Strategic Plan under development. Currently, organizational development support is focusing on developing standard policies on volunteer management, human resource development, and branch development. The first draft of the volunteer management policy is at an advanced stage whereas the HR policy and annual ToR have been completed and validated by the senior management at the HQ. Key areas such as operational management, standard operating procedures, systematic training of staff and volunteers, and strengthening warehouse management, logistics and communications have already been identified as important priorities, and the newly recruited DRR delegate is currently supporting CVM in the implementation of PER recommendations and plan of actions is selected pilot branches with a priority to those hit by Idai and Eloise.

Output S1.2.1 National Society has an up-to-date strategic plan, statute and governance structure

Indicators	Target	Actual
CVM strategic plan approved and developed	1	1

Progress towards Outcome

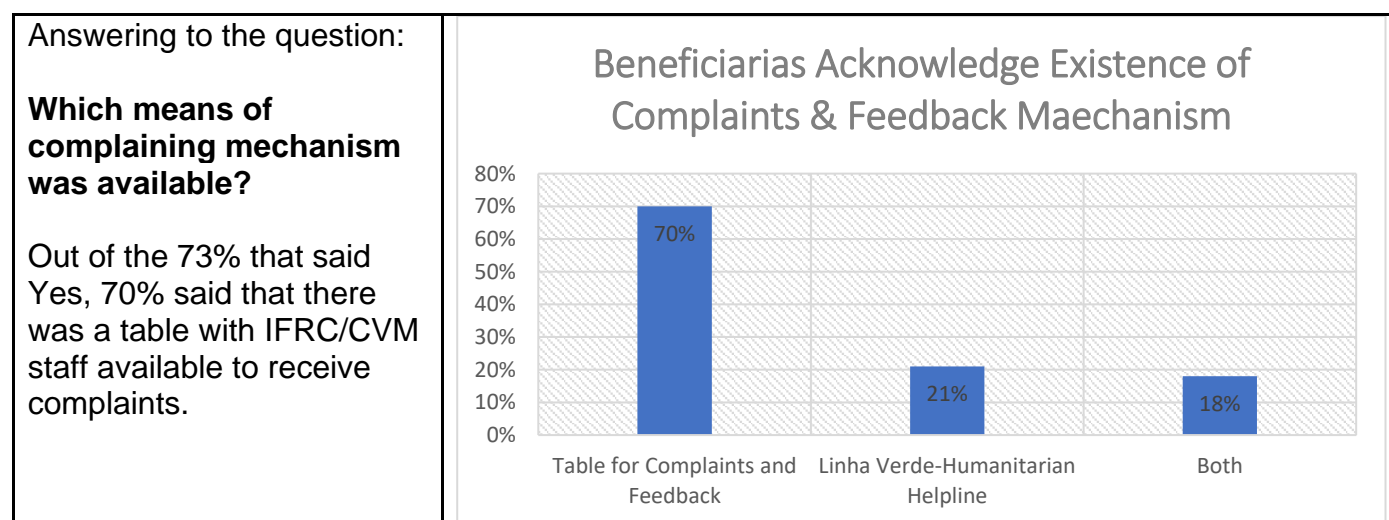
In December 2020, the NS initiated a consultative workshop on the new Strategic Plan in Chimoio. The current one (I-e, 2018-2021) will end in December 2021 and the new will have been completed by then.

Output S2.1.3: N S capacity compliance with principles and rules for Humanitarian Assistance is improved

Indicators	Target	Actual
# of volunteers receive community engagement & accountability trainings	1,100	453
% of target population agree their priority being met	85%	Not yet measured
% of target community agree to their feedback being taken by CVM		Not yet measured
# of feedback comments collected & feedback reports produced		In progress

PDM For Food Distribution

Who registered you as a beneficiary?	82% (volunteers), 17% (Community leaders)
---	---



From January to March 2021, CEA was engaged along program sectors to ensure a harmonized approach and methodologies during the implementation in the field. Activities supported during this period include the distribution of dignity kits, support distribution of FSL kits, assessment and distribution of Shelter material and training of trainers of volunteers and key staff engaged in CEA activities. The mandate of CEA has been equally to continue to sensitize the

community as regard COVID-19 prevention measures in collaboration with the health staff and trained volunteers. CEA was equally able to support programs in carrying out specific activities in the field as detailed below:

- Support the distribution of dignity kits to women and girls by the PGI sector in Manica Province, in Sede, Macate district: 362 families reached with 448 kits and at the locality of Dibi, Mossourize district where 573 families were reached with 675 Kits.
- Support the distribution of FSL kits in the community of Nhankoma of Tete province where 800 families were assisted.
- Support to the shelter assessment and subsequent distribution of kits in Buzi.
- Support to the distribution of 1,810 mosquito nets to 2,495 families in different project locations.

As far as Capacity Building is concerned, CEA has trained 24 local CVM volunteers in Buzi on CEA basic aspects related to managing the distribution of mosquito nets. An additional 20 CVM volunteers were trained on the assessment and registration of beneficiaries resulting in 450 families being registered in the neighborhood of Masquil Alto. Furthermore, CEA conducted a ToT training for 17 CVM volunteers selected across program sectors on Risk Communication and Community Engagement (RCCE) to make sure the Idai implementation is smoothly run and guarantee the community's involvement and ownership for better sustainability.

Strengthening Coordination and Accountability

Output S2.1.6: Coordination role of the IFRC with the International Humanitarian system is enhanced

Indicators	Target	Actual
% of shelter agencies supported by the shelter cluster	100%	100%

Outcome S2.2: The complimentary and strengthens of the movement are enhanced

Indicators	Target	Actual
% of RC/RC actors reporting increased movement coordination	100%	100%
Progress towards Outcome		

While both CVM and IFR both participate in the Humanitarian Cluster coordination, IFRC is chairing the cluster coordination since the beginning of Idai operation. This has tremendously positioned the RC movement in terms of visibility but also confirmed the leading status of the Red Cross Movement as a humanitarian organization globally. It is worth mentioning that the coordination Centre for Idai and Kenneth Operation is based in Beira, the provincial capital of Sofala, the epicenter of the crisis.

CVM/IFRC convene shelter cluster partners to map activities, agree on a common shelter response strategy and ensure quality and coordinated shelter response. The Canadian Red Cross engaged a Shelter Cluster Coordinator to support CVM/IFRC in the shelter cluster leadership role for three months, between January and April 2021. This support had initially been planned to enhance coordination of the response to Tropical Storm Chalane, which hit Mozambique in late December 2020, and preparedness activities throughout the cyclone season, but the additional impact of Tropical Cyclone Eloise required strengthened coordination of the response system and additional resources to ensure CVM/IFRC deliver effective shelter coordination services. The activities included the development of an inter-agency shelter strategy, preparedness planning for 2021/22 in coordination with the northern region coordination team, monitoring of the shelter response to avoid duplication and gaps, *linha verde* shelter complaints follow-up, inter-cluster coordination, and technical support for quality shelter response.

During this time the Shelter Cluster developed an overview of the shelter needs situation, compiling data from DTM, INGD and other partners, and on a day-to-day basis directed 11 active Shelter Cluster partners to the most in need areas, advising on standards and recommendations for NFIs and shelter interventions. Over 66,000 people were assisted with shelter and NFIs during this time. For further details please see Shelter Cluster website, with minutes and an overview presentation of Shelter Cluster partners activities during this period:

<https://www.sheltercluster.org/response/tc-eloise-mozambique-2021>

On another note, the CVM with the support of IFRC office in Maputo, is chairing the Movement Coordination meetings on a monthly basis. ICRC and PNSs present in the country, namely the Belgium RC Flanders, the German RC, the Spanish RC, the French RC and the Italian RC. This coordination not only contributes to strengthening the ties between the three Movement components, but also improves the planning and strategic thinking around program activities in the country, allowing therefore to support each other or complement one another when necessary.

Output S2.2.1: In large-scale emergencies the IFRC, ICRC and NS enhance operational reach & effectiveness by new coordination means		
Indicators	Target	Actual
1 Movement 4 Was developed and updated	1	ongoing
1 Emergency coordination cell activated	2	100%
Progress towards Outcome		
The 4W's have been developed and are updated on a quarterly basis. The information flow for this is generated from Maputo where monthly Movement coordination meetings are held. Information on programmatic matters (who is doing what, how and with what means) is regularly shared among the Sectors in which each Movement component is focusing on by Province, district and locality. This contributes to an enhanced coordination and mutual support amongst Movement stakeholders.		

Influencing others as strategic partners		
Outcome S3.1The IFRC secretariate, with NS uses their unique position to influence decisions at local, national & international levels that affects the most vulnerable		
Indicators	Target	Actual
# of external communications activities undertaken	10	4
# of Advocacy and lobbying initiatives are carried out	5	1
Progress towards Outcome		
Output S3.1.1: IFRC and NS are visible, trusted and effective advocates on Humanitarian Issues		
Indicators	Target	Actual
# of external communications activities undertaken	10	4
# of Social media platforms active	2	3
Progress towards Outcome		
There were no changes during the reporting period.		
Output S3.1.2: IFRC produces high quality research and evaluation that informs advocacy, resource mobilization and programs		
Indicators	Target	Actual
# of evaluations and research conducted	4	5
Progress towards Outcome		
Final Evaluation for Cyclone Idai is expected to be carried out in July 2021.		
Outcome S3.2: The programmatic reach of the Mozambique Red Cross and the IFRC is expanded		
Indicators	Target	Actual
% of reports submitted on time	80%	50%
Output S3.2.1: Strengthening planning, monitoring, evaluation and reporting		
Indicators	Target	Actual
# of assessments conducted	4	5
Progress towards Outcome		
The IFRC PMER team is supporting the strengthening of its counterpart in CVM. After coordination meeting between the 2 teams to discuss the priorities of the CVM PMER Team, the CVM PMER Coordinator revealed the 3 main priorities for which they needed support as follows: 1- Human Resources for PMER unit:		

Additional technical staff for the CVM-PMER unit is crucial since the unit has been struggling for years with only 1 staff to respond at national level. With the support of the IFRC, CVM activated the recruitment process for the 2 PMER staff.

2- **Equipment and Digital Transformation:**

Equipment such as laptops and tablets are among the top needs of the CVM, especially the PMER unit. The use of IT would also allow faster communication with provincial and district branches, protection of records and electronic storage of data.

3- **Capacity Building**

Capacity Building of PMER staff and Program Managers in Information Management, Planning, Reporting, M&E, at provincial and district level was the third priority mentioned during the meeting.

Output S3.2.2: Resource generation and related accountability models are developed and improved		
Indicators	Target	Actual
% of DAG members reporting a positive experience	100%	100%
Progress towards Outcome		
There were no changes during the reporting period.		
Output S3.2.3: CVM is supported in resource and partnership development (both domestic and foreign sources)		
Indicators	Target	Actual
# of Resource mobilization plan approved	1	0
Progress towards Outcome		
There were no changes during the reporting period.		
Outcome S4.1: The IFRC enhances its effectiveness, credibility, and accountability		
Indicators	Target	Actual
% of positive performance appraisals achieved	70%	Ongoing
Output S4.1.2 IFRC staff shows good level of engagement and performance		
Indicators:	Target	Actual
% of planned appraisals conducted.	100%	Ongoing
Progress towards Outcome		
Updates on performance appraisals will be provided in the following report. The operation is expected to down-size considerably as of June 2021.		
Output S4.1.3: Financial resources are safeguarded; quality financial and administrative support is provided contributing to an efficient operations and effective use of assets		
Indicators	Target	Actual
# of Audits conducted	2	2
Progress towards Outcome		
There were no changes during the reporting period.		
Output S4.1.4: Staff security is prioritized in all IFRC in all IFRC activities		
Indicators	Target	Actual
% security assessments are carried out	100%	100%

% of the security plans are updated in all operational areas	100%	100%
Progress towards Outcome		
<p>Security Updates</p> <p>The general security situation in Mozambique was fairly calm during the months of January – February 2021. Due to floods experienced during the 2 months, roads were flooded and damaged, limiting access to the areas of operation and causing insecurities on the road. The security team conducted road safety assessments, and advised programs accordingly, prior to any field trip. Security and Fleet units were in constant coordination with programs in order to put mitigation measures in place.</p> <p>The month of March 2021 was marked by the biggest attack ever seen in Palma district, Cabo Delgado province, since 2017 when the first attack took place in the region. Palma district was attacked on March 24th, hours after Total, the leading gas project company in Mozambique, issued a statement saying that security in the region had improved enough to gradually resume work on the Gas liquefaction plants on the Afungi peninsula. Consequently, after the attacks, massive IDPs fled to the capital city of Pemba, and the districts of Nangade, Mueda, Montepuez. Mozambique Red Cross and ICRC were on the ground to support the IDP families with emergency shelter, NFIs, basic needs.</p> <p>The Mozambican government and the main opposition party, Renamo, launched the Demobilization, Disarming and Reintegration (DDR) of the members of the Renamo militia in Manica province. The demobilization of former Renamo guerrillas had only taken place in the neighbouring province of Sofala. With the expansion of the DDR into Manica in March 2021, according to the provincial governor, 426 members of the militia of Mozambique’s main opposition party were demobilized, out of an expected 782 members. Before the DDR resumed, two direct collaborators of the opposition Military Junta Leader decided to leave the group in the bush and return to “normal life”. These two former influential members called for a definitive truce and amnesty, to encourage the guerrillas to leave the forests. Meanwhile, there has been resistance on the part of a few members of the group in some areas in the central provinces, who continue to wait for a satisfactory negotiation with the government.</p> <p>There has been a constant movement control of all field missions, to prevent staff from reaching the most conflict targeted locations.</p>		

C. Financial Report

The financial report is attached at the end of this report

Contact information

For further information, specifically related to this operation please contact:

In the Mozambique Red Cross (MRCS)

- **Secretary General** Maria Cristina Uamusse, Tel: +258 82 440 8280; email: cristina.uamusse@redcross.org.mz
- **Disaster Manager** Boavida Chambal, Tel: (+258) 84 884 71 35; email: boavida.chambal@redcross.org.mz
- **Programme Director** Ilidio Nhatuve, Tel: +258 82 440 8280; email: llidio.Nhatuve@redcross.org.mz

In the IFRC

- **IFRC Country Delegation** Gorkhmaz Huseynov, Head of Country Delegation,; Phone: +258 87 681 0013; email: gorkhmaz.huseynov@ifrc.org
- **IFRC Regional Office for Africa** Adesh Tripathee, Head of DCPRR, Nairobi, Kenya; phone +254731067489; email: adesh.tripathee@ifrc.org

For IFRC Resource Mobilization and Pledges support:

- **Partnership and Resource Development** Louise DAINTREY: Head of Unit, Partnerships & Resource Dev. Regional Office, Africa email: louise.daintrey@ifrc.org, phone: +254 110 843978
-

For In-Kind donations and Mobilization table support:

- **Logistics Coordinator** Rishi Ramrakha, Head of Africa Regional Logistics Unit, email: rishi.ramrakha@ifrc.org; phone: +254 733 888 022

For Performance and Accountability support (planning, monitoring, evaluation and reporting enquiries)

- **IFRC Regional Office for Africa** Philip Kahuho, PMER Manager, Philip.kahuho@ifrc.org, Phone: +254 732 203081

Reference documents



Click here for:

- [Previous Appeals and updates](#)

How we work

All IFRC assistance seeks to adhere to the **Code of Conduct** for the International Red Cross and Red Crescent Movement and Non-Governmental Organizations (NGO's) in Disaster Relief and the **Humanitarian Charter and Minimum Standards in Humanitarian Response (Sphere)** in delivering assistance to the most vulnerable. The IFRC's vision is to inspire, encourage, facilitate and promote at all times all forms of humanitarian activities by National Societies, with a view to preventing and alleviating human suffering, and thereby contributing to the maintenance and promotion of human dignity and peace in the world.

Emergency Appeal

INTERIM FINANCIAL REPORT

Selected Parameters			
Reporting Timeframe	2019/3-2021/3	Operation	MDRMZ014
Budget Timeframe	2019-2021	Budget	APPROVED

Prepared on 10 Jun 2021

All figures are in Swiss Francs (CHF)

MDRMZ014 - Mozambique - Tropical Cyclone Idai

Operating Timeframe: 14 Mar 2019 to 19 Jul 2021; appeal launch date: 20 Mar 2019

I. Emergency Appeal Funding Requirements

Thematic Area Code	Requirements CHF
AOF1 - Disaster risk reduction	1,115,000
AOF2 - Shelter	3,813,000
AOF3 - Livelihoods and basic needs	4,040,000
AOF4 - Health	6,774,000
AOF5 - Water, sanitation and hygiene	4,262,000
AOF6 - Protection, Gender & Inclusion	1,406,000
AOF7 - Migration	0
SFI1 - Strengthen National Societies	2,428,000
SFI2 - Effective international disaster management	5,243,000
SFI3 - Influence others as leading strategic partners	545,000
SFI4 - Ensure a strong IFRC	2,374,000
Total Funding Requirements	32,000,000
Donor Response* as per 10 Jun 2021	19,584,231
Appeal Coverage	61.20%

II. IFRC Operating Budget Implementation

Thematic Area Code	Budget	Expenditure	Variance
AOF1 - Disaster risk reduction	647,366	378,051	269,315
AOF2 - Shelter	3,930,226	2,675,521	1,254,704
AOF3 - Livelihoods and basic needs	2,365,129	1,127,842	1,237,287
AOF4 - Health	2,341,656	1,776,493	565,163
AOF5 - Water, sanitation and hygiene	1,652,863	1,143,685	509,179
AOF6 - Protection, Gender & Inclusion	732,280	721,561	10,719
AOF7 - Migration	0	0	0
SFI1 - Strengthen National Societies	1,592,281	1,131,960	460,320
SFI2 - Effective international disaster management	3,509,821	3,654,484	-144,663
SFI3 - Influence others as leading strategic partners	648,184	528,689	119,495
SFI4 - Ensure a strong IFRC	1,391,768	1,878,257	-486,489
Grand Total	18,811,574	15,016,542	3,795,031

III. Operating Movement & Closing Balance per 2021/03

Opening Balance	0
Income (includes outstanding DREF Loan per IV.)	19,066,351
Expenditure	-15,016,542
Closing Balance	4,049,809
Deferred Income	0
Funds Available	4,049,809

IV. DREF Loan

* not included in Donor Response	Loan :	750,000	Reimbursed :	750,000	Outstanding :	0
----------------------------------	--------	---------	--------------	---------	----------------------	----------

Emergency Appeal

INTERIM FINANCIAL REPORT

Selected Parameters			
Reporting Timeframe	2019/3-2021/3	Operation	MDRMZ014
Budget Timeframe	2019-2021	Budget	APPROVED

Prepared on 10 Jun 2021

All figures are in Swiss Francs (CHF)

MDRMZ014 - Mozambique - Tropical Cyclone Idai

Operating Timeframe: 14 Mar 2019 to 19 Jul 2021; appeal launch date: 20 Mar 2019

V. Contributions by Donor and Other Income

Income Type	Cash	InKind Goods	InKind Personnel	Other Income	TOTAL	Deferred Income
Opening Balance					0	
American Red Cross	622,731				622,731	
Anadarko Petroleum Corporation	60,074				60,074	
Andorran Red Cross	5,470				5,470	
Australian Red Cross	357,750				357,750	
Austrian Red Cross	1,390,941				1,390,941	
Belgian Red Cross (Francophone)			9,758		9,758	
Belgium - Private Donors	90				90	
Brazilian Red Cross	11,150				11,150	
British Red Cross	2,038,850	251,963			2,290,813	
British Red Cross (from British Government*)	2,441,718				2,441,718	
British Red Cross (from DEC (Disasters Emergency Cc	616,288				616,288	
Bulgarian Red Cross	2,000				2,000	
Burundi Red Cross			16,181		16,181	
Center for Disaster Philanthropy	1,380				1,380	
China Red Cross, Hong Kong branch	50,230				50,230	
Credit Suisse Foundation	1,000,000				1,000,000	
Croatian Red Cross	5,205				5,205	
Czech Government	222,432				222,432	
Estonia Government	33,935				33,935	
European Commission - DG ECHO	170,241				170,241	
Facebook	96,117				96,117	
Finnish Red Cross	179,262				179,262	
Fondation Trafigura	99,549				99,549	
Food and Agriculture Organization of the UN (FAO)	44,028				44,028	
French Red Cross	23,310	358,611			381,921	
German Red Cross	56,018		20,095		76,113	
Germany - Private Donors	2,598				2,598	
Icelandic Red Cross	100,000				100,000	
Icelandic Red Cross (from Icelandic Government*)	100,000				100,000	
IFRC at the UN Inc	-843				-843	
IFRC at the UN Inc (from Coca Cola Foundation*)	581,257				581,257	
IFRC at the UN Inc (from Patrick J.McGovern Foundati	98,024				98,024	
Iraqi Red Crescent Society	997				997	
Irish Government	573,010				573,010	
Irish Red Cross Society	70,177				70,177	
Italian Government Bilateral Emergency Fund	112,820				112,820	
Japanese Red Cross Society	152,411				152,411	
Liechtenstein Government	100,000				100,000	
Liechtenstein Red Cross	94,965				94,965	
Luxembourg Government	273,863				273,863	
Nestle	93,628				93,628	
Netherlands - Private Donors	12,016				12,016	
New Zealand Government	336,450				336,450	
New Zealand Red Cross	22,213				22,213	
Norwegian Red Cross	284,539	72,922			357,461	
On Line donations	40,662				40,662	
Other	0				0	
Red Cross of Monaco	24,405				24,405	
Singapore Red Cross Society	30,456				30,456	
Slovenia Government	54,309				54,309	

Emergency Appeal

INTERIM FINANCIAL REPORT

Selected Parameters			
Reporting Timeframe	2019/3-2021/3	Operation	MDRMZ014
Budget Timeframe	2019-2021	Budget	APPROVED

Prepared on 10 Jun 2021

All figures are in Swiss Francs (CHF)

MDRMZ014 - Mozambique - Tropical Cyclone Idai

Operating Timeframe: 14 Mar 2019 to 19 Jul 2021; appeal launch date: 20 Mar 2019

Income Type	Cash	InKind Goods	InKind Personnel	Other Income	TOTAL	Deferred Income
Spanish Government	56,771				56,771	
Spanish Red Cross	24,146	37,200			61,346	
Sundry Income				7,560	7,560	
Swedish Red Cross	602,840				602,840	
Swiss Red Cross	374,730	42,000			416,730	
Switzerland - Private Donors	1,023				1,023	
The Canadian Red Cross Society	7,927	121,949	8,900		138,776	
The Canadian Red Cross Society (from Canadian Gov	258,318				258,318	
The Netherlands Red Cross	1,005,007				1,005,007	
The Netherlands Red Cross (from Netherlands Govern	1,923,913				1,923,913	
The OPEC Fund for International Development	486,157				486,157	
The Republic of Korea National Red Cross	109,394				109,394	
The South African Red Cross Society (from South Afric	38,621				38,621	
United States Government - USAID	491,899				491,899	
United States - Private Donors	25,822				25,822	
White and Case, LLP	24,230				24,230	
World Remit	24,999				24,999	
Write off & provisions				-23,310	-23,310	
Total Contributions and Other Income	18,142,521	884,645	54,934	-15,749	19,066,351	0
Total Income and Deferred Income					19,066,351	0