

### Population Movement Complex Emergency Appeal



<b>Appeal No:</b> MDRTIGRAY	<b>Operations Update n° 3</b> <b>Date of issue:</b> 19 July 2021	<b>Timeframe covered by this update:</b> 26 January – 30 June 2021
	<b>Operation start date:</b> 26 January 2021	<b>Operation timeframe:</b> 18 months and end date, 26 July 2022
<b>Glide No:</b> <a href="#">CE-2020-000229-ETH</a>	<b>IFRC Funding requirements:</b> CHF 3 million Swiss francs for Ethiopia. This is part of a multi-country secretariat requirement of CHF 9.4 million which also includes Djibouti (CHF 0.5 million), Sudan (CHF 4.4 million) and Regional Coordination (CHF 1.5 million)  <b>Federation-wide response funding requirements:</b> CHF 27 million as part of a multi-country coordinated emergency appeal across Djibouti, Ethiopia and Sudan	<b>DREF amount initially allocated:</b> CHF 357,391 for Ethiopia
<b>Red Cross Red Crescent Movement partners currently actively involved in the operation:</b> Canadian Red Cross, Danish Red Cross, Monaco Red Cross, British Red Cross, Japan Red Cross, Netherland Red Cross, Turkey Red Cross, Swiss Red Cross.		
<b>Other partner organizations actively involved in the operation:</b> OCHA, UNFPA, UNICEF, Save the Children		

Please click [here](#) for the Interim Financial Report and [here](#) for the Contacts

## A. THE DISASTER AND THE RED CROSS RED CRESCENT RESPONSE TO DATE



This Operations Update is issued to announce a revision to the Secretariat component of the Ethiopia Plan of Action (PoA) which is part of the coordinated MDRTIGRAY Tigray Crisis: Population Movement Complex Emergency Appeal. The PoA revision is required to respond to the deterioration in the acute food insecurity situation in Ethiopia.

For information on the overall Emergency Appeal which is a multi-country Federation-wide response to the cascading effects of the Tigray crisis across Djibouti, Ethiopia and Sudan please refer to [Operations Update no.2](#) issued on 20 June 2021.

- 3 - 4 November 2020: Fighting erupts between Ethiopian Defense Forces and security forces in the Tigray Region following an attack in Mekele on a military base resulting population movement, including across the border to neighbouring Djibouti and Sudan**
- 18 November 2020: IFRC releases CHF 498,763 from the Disaster Relief Emergency Fund (DREF) support Sudan Red Crescent Society (SRCS) provide assistance to 40,000 people that had crossed the border from Ethiopia into Gedaref and Kassala.**
- 20 November 2021: IFRC releases CHF 359,213 from the DREF to support Ethiopian Red Cross Society (ERCS) aid 7,500 people that had been displaced into Amhara region; as well as complete assessments in Tigray region and other areas.**
- 26 January 2021: IFRC issues a coordinated Tigray Crisis: Population Movement Complex Emergency Appeal requesting CHF 27 million to support 600,000 people as part of a multi country response across Ethiopia (355,000), Sudan (300,000) and Djibouti. (5,000)**
- 30 March 2021: IFRC issues a revised Federation-wide Emergency Appeal; with a retained funding requirement of CHF 27 million comprising: CHF 9.4 million Secretariat (Ethiopia CHF million, Sudan CHF 4.4 million, Djibouti CHF 0.5 million, Regional Coordination CHF 1.5 million). and CHF 17.6 million bilateral.**

- **June 2021: Integrated Food Security Phase Classification (IPC) reports that 5.5 million people in Tigray and neighbouring Afar and Amhara regions are facing Acute Food**
- **28 June 2021: IFRC issues a communication informing partners of the deterioration in food insecurity in northern Ethiopia (Afar, Amhara and Tigray); and need for CHF 2.5 million to support ERCS scale up their response in these areas.**
- **28 June 2021: Ethiopian Government announces a unilateral ceasefire in Tigray.**
- **15 July 2021: Reports of clashes between need for Ethiopia Defence Forces and security forces in Tigray persist.**

## Situation overview

Since November 2020, fighting between the Ethiopian Government and the Tigray Defence Forces has resulted in loss of life; injuries; destruction of property and infrastructure; displacement; loss of livelihood and has led to psychological distress. Displaced populations from Tigray region and other internally displaced people (IDPs) remain in camps. The number of people across the country in need of humanitarian assistance has increased to more than 16 million people.

On 28 June 2021, a unilateral humanitarian ceasefire in Tigray was announced by the Ethiopian Government; and while movement and access are improving, the security situation in the region remains a concern. There continues to be reports of clashes; and remains disruption to basic services such as electricity and communications, as well as reduction in availability of cash, food, and fuel.



Food insecurity and malnutrition across northern Ethiopia has escalated due to the cascading effects of the fighting, including population displacements, movement restrictions, loss of harvest and livelihoods assets, and dysfunctional or non-existent markets.

It is estimated that 5.5 million people are facing acute food insecurity in Tigray and the neighbouring regions of Afar and Amhara, with 353,000 people in Catastrophic situation (IPC Phase 5) which is the highest number of people in this category since the 2011 Somalia). Furthermore, there are 2.1 million people in Emergency (IPC Phase 4), and 3.1 million in Crisis (IPC Phase 3), between May and June 2021. This is despite major humanitarian assistance that has reached up to 5 million in the last few months<sup>i</sup>. There is an urgent need to scale up humanitarian assistance; with the planting season currently underway, and therefore if people do not receive seeds, tools and other livelihoods assistance, there is a danger that the situation could be further exacerbated. Latest projections for July to September 2021, are already indicating that the number of people in IPC Phase 5 is expected to increase to more than 400,000<sup>ii</sup>.

In other areas of Ethiopia, the humanitarian situation remains of considerable concern. In the south of Amhara region, not covered by this Emergency Appeal, there has been spates of ethnic violence, but which has resulted in the displacement of 250,000 people. There are also concerns regarding the deteriorating situation in Benishangul-Gumuz, where unknown armed groups are gaining momentum in western areas of the region and restricting access.

Though casting of votes in the 2021 general elections have been done peacefully, the postponement of elections in Harari and Somali regions, as well as delayed declaration of results in some polling stations raises concerns on perceptions on the regularity in which they were conducted which may impact opposition groups acceptance of the results. In the complex security situation, these factors continue to exacerbate the risk of election-related violence.

## Summary of Red Cross Red Crescent response to date

### Overview of Host National Society

ERCS has a responsibility to provide humanitarian assistance to victims of conflict/violence as enshrined in the amended charter revised on 26 January 2018 for assisting people affected by natural disasters and conflict throughout the country. The main auxiliary role of ERCS is to supplement the government in the fulfilment of its responsibility to address the vulnerabilities that exist in the country. The Geneva Convention and additional protocol and the International Humanitarian Law are other legal basis for Red Cross engagement in such kind of humanitarian interventions being impartial, neutral, and independent as outlined in its Fundamental Principles.

The ERCS is a key national humanitarian actor and is present in all the regions of Ethiopia through its network of branches and 44,138 volunteers, 5 million members and 6,000 Red Cross committees at community level. ERCS has representation by regional and zonal branches a total of 11 regions and 37 branches. At the National Headquarters (NHQ) through the Deputy Secretary General for programs the operations are led by a competent technical team in the disaster preparedness and response department. ERCS has trained National Disaster Response Teams (NDRTs) and Branch Disaster Response Teams (BDRTs). ERCS` auxiliary status ensures that ERCS can move faster and reach areas that are relatively sensitive and where other humanitarian actors cannot easily access

The National Society (NS) was the first to respond to the crisis in Tigray; and carried the first initial assessment before all other humanitarian actors were able to have access. ERCS has been privileged by its local network and acceptance by communities and has not been limited in terms of access across the entirety of Tigray region.

ERCS mobilised support from ICRC, IFRC, bilaterally support from the partner National Societies (pNS) to respond to the range of emerging needs including casualty evacuation ambulance services and first aid, temporary shelter needs for displaced populations crossing from Tigray region and capacity development in Protection, Gender, and Inclusion (PGI) and Community Engagement and Accountability (CEA). More specifically it collaborated with ICRC on the provision of medical supplies support to referral hospitals in Amhara region bordering Tigray.

ERCS, IFRC and the ICRC have coordinated their approach and issued a joint statement on their intervention strategies where the ERCS is at the centre of the response, with ICRC taking the lead inside Tigray, and IFRC and other RCRC partners cooperating to address the cascading effects of the fighting and spill-over into adjacent zones in the neighbouring regions of Amhara and Afar, as well as Benishangul-Gumuz and Southern Nations, Nationalities and Peoples (SNNP) regions.

Summary of people reached, intervention sectors so far in response to the Tigray crisis (inside and outside Tigray) and partners supporting ERCS.

Partners	Intervention sectors	Target population reached	Budget (CHF)
<b>Federation-wide and ICRC support to ERCS</b>	Shelter and Household Items, Livelihoods and basic needs, Health, WASH, PGI and CEA	177,340,337	4,112,510
<b>Other partners support to ERCS</b>	Shelter and Household items, Livelihoods and basic needs, WASH and PGI	109,282,612	2,526,840

## Overview of Red Cross Red Crescent Movement in country

The International Federation of Red Cross and Red Crescent Societies (IFRC) provides technical and financial support to ERCS through an Operations Manager based in Addis Ababa and its Eastern Africa Country Cluster Delegation (EA CCD) and the Regional Office for Africa which are both based in Nairobi, Kenya. There are seven pNS present in Ethiopia: Austrian Red Cross, Danish Red Cross, Finnish Red Cross, German Red Cross, The Netherlands Red Cross, Qatar Red Crescent and Swiss Red Cross. The ICRC has a Delegation in Addis Ababa, Sub-Delegations in Mekele, Nekemte, Djijiga, and an Office in Shire. It supports and works closely with ERCS in areas affected by violence.

In January 2021, IFRC launched a Federation-Wide (FW) Emergency Appeal requesting CHF 27 million, to support Ethiopian Red Cross Society (ERCS) provide humanitarian assistance to displaced populations outside of Tigray region, as well as in Sudan and Djibouti. The FW Emergency Appeal consolidated a Secretariat (multilateral) component covering CHF 9.4 million; of which CHF 3 million was requested for Ethiopia; and RCRC Movement partners (bilateral) component covering CHF 17.6 million.

An IFRC surge team was deployed from December 2020 – May 2021, with profiles including Head of Operations (OPs), Cash and Voucher Assistance (CVA), Information Management (IM), Communications, Partnerships and Resource Development (PRD), Planning, Monitoring, Evaluation and Reporting (PMER), Security and Water, Sanitation and Hygiene (WASH). This strengthened coordination of support to Partners and ERCS – in mobilizing resources for domestic appeals and technical support to deliver on programmatic objectives. IFRC is in the process of recruiting a head of cluster position to strengthen, coordination, partnership, and strategic positioning; and has posted a senior PRD delegate (from July 2021 onwards) to Addis Ababa. To support the provision of FW technical services, recruitment of longer-term PGI, PMER and WASH personnel are also being prioritized.

A Movement Coordination Framework by ERCS, ICRC and IFRC has been ratified, and is operational in accordance with the SMCC structure. It includes a Movement Platform (Strategic-level) and Movement Coordination Meeting (Operational-level), which are supported by following technical committees: Emergency Coordination Taskforce, Election Contingency Planning Taskforce, and a Security Coordination Committee. Terms of Reference (ToR) are in place for all the committees; and meetings are held according to a pre-agreed schedule with rotational chairs. A Movement Coordination Agreement and Movement Communications Framework are being developed.

FW-reporting systems have also been developed, comprising a FW Picture, Indicator Tracking Tool (ITT), and a Financial Overview. These were launched at the start of April 2021; and used to inform Operations Update no.2. A 3-month operational planning cycle has also been embedded into the Emergency Appeal to ensure that activities planned remain appropriate to the evolving humanitarian situation and resources needed.

Please refer to the published [Emergency Appeal](#) for more information on the FW approach that is being taken under this response.

## Overview of non-RCRC actors in country

ERCS coordinates with the National Disaster Risk Management Commission (NDRMC) in the planning and implementation of emergency response actions; and is a member of the National Operations Centre. ERCS is also part of the Humanitarian Country Team (HCT), is represented in clusters and participates in inter-agency working group meetings for various sectors (Cash, Food and Non-Food Security, Nutrition, ES/NFI, Protection, and Education) NHQ and regional levels as well as the NDRMC led national early warning task force and Cash Working Group. Movement Partner focal points are supporting ERCS with engagement in the cluster system. The IFRC Ethiopia Operations Office is supporting in the Food and Non-Food Security, ES/NFI clusters, and as part of the Cash Working Group.

As auxiliary to the Government of Ethiopia, ERCS has coordinated with its security agencies to ensure that the NS and ICRC has had unlimited access inside Tigray; and IFRC and pNS to other areas of the country as needed.

Most Non-Movement humanitarian organizations have pivoted their resources to the situation inside Tigray region. ERCS has entered partnership with UN agencies including UNICEF and UNFPA; as well as international NGOs (Save the

Children) in their response to the Tigray crisis. In order not to compromise the NSs neutrality it has ensured independence of engagement in these partnerships and implemented the interventions based on this principal.

In response to the deteriorating humanitarian situation in Ethiopia; the United Nations declared in May 2021, the Humanitarian System-Wide Scale-Up Activation by the Interagency Standing Committee (IASC); and released US\$ 65 million to support the response in Ethiopia. This comprised \$45 million from the UN managed Ethiopia Humanitarian Fund (EHF), and \$25 million from the UN Central Emergency Response Fund (CERF). Of the \$65 million, a total of \$40 million is dedicated for Tigray. The UN World Food Program are also appealing for \$180 million to respond to the food insecurity crisis in Ethiopia.

On 10 June 2021, the UN Under-Secretary General for Humanitarian Affairs and Emergency Relief Coordinator participated in a high-level round table held by the European Union and the United States, specific in Tigray. At this, the need for severity of the humanitarian situation; and the need for a scaled-up response was again reinforced. The U.S. Agency for International Development (USAID) has also announced \$181 million new USAID assistance to provide humanitarian assistance in Tigray.

## B. THE OPERATIONAL STRATEGY

### Prioritized interventions (Phase: July – December 2021)

**The situation across Ethiopia, including in Tigray region and elsewhere in the country impacted by the cascading effects of the crisis, remains continuously complex and evolving. ERCS with support from IFRC and its members must be ready to respond. Therefore, to ensure that actions remain relevant to the changing context, it was agreed that country level PoA under the FW Emergency Appeal would be reviewed every 3-months; and then revised if necessary to incorporate emerging needs and priorities.**

**Following the deterioration of the food security situation in northern Ethiopia, specifically those adjacent to Tigray that have been considerably impacted by the cascading effects of the crisis; it was determined that a revision to the PoA to was required to support IDP, post IDP (returnees) and host communities in these areas. There will be prioritisation of the following interventions which are to be implemented through the IFRC secretariat (multilateral) support:**



- Provision of multipurpose cash assistance for meeting basic needs.
- Provision of livelihood assets (seeds, tools, fertilizers, and other inputs) to increase food production capacity.
- Protection, Gender, and Inclusion (PGI), and Community Engagement and Accountability (CEA) strengthening and mainstreaming,
- Maintaining ERCS service delivery capacity through targeted National Society Development (NSD) related support.

The above interventions will be planned over a period of six months (July – December 2021). They will target specific zones in Afar and Amhara regions, that are adjacent to Tigray region, and have been impacted by the cascading effects of the crisis, which has triggered worsened Acute Food Insecurity (IPC Phase 3 (Crisis) and above). The Secretariat funding requirement for Ethiopia remains unchanged at CHF 3 million; of which CHF 2.5 million is needed (not covered) to implement the revised PoA.

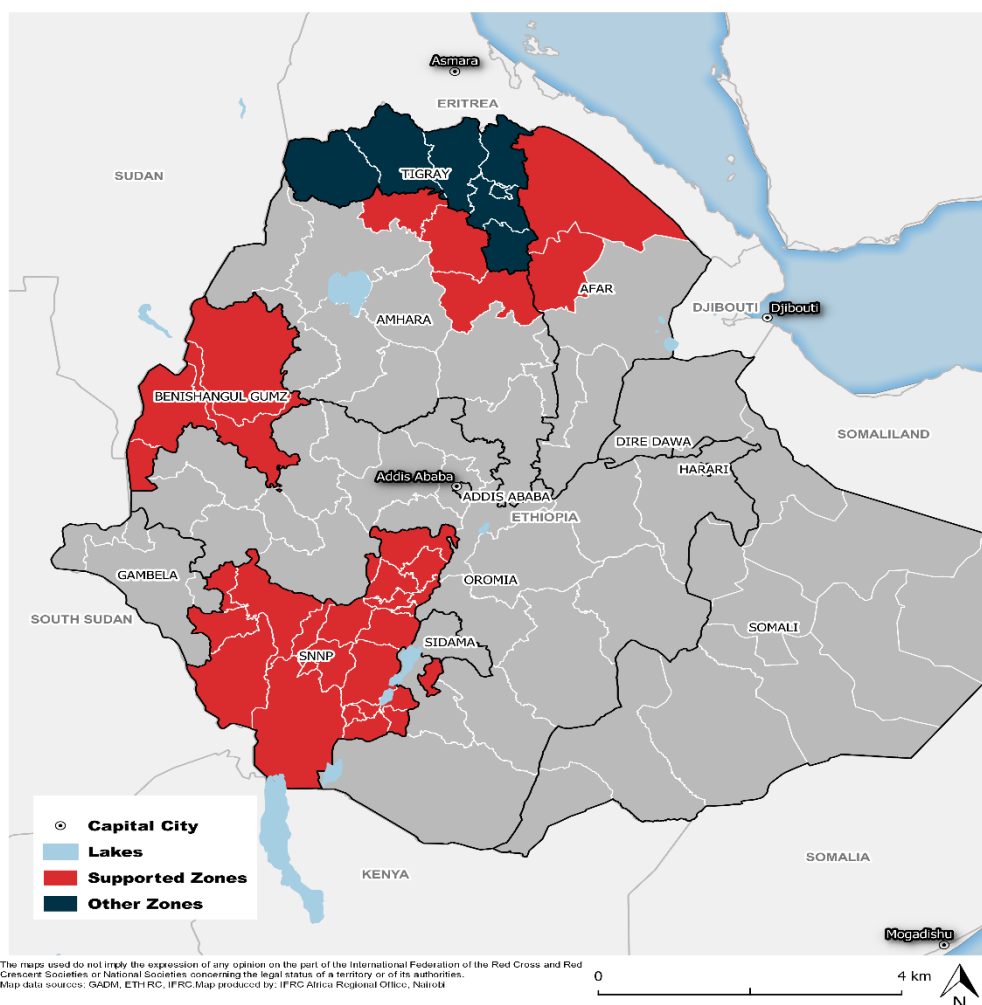
Under the bilateral component of the FW Emergency Appeal, pNS will continue with complementary cash and voucher assistance (CVA), NSD, Health and WASH interventions in other zones inside Amhara, Benishangul-Gumuz, and Southern Nations, Nationalities and Peoples Region (SNNP) regions, and not targeted by IFRC.

In this respect the table below reflects the coordinated and complementary scale-up being taken by the IFRC and membership under this FW Emergency Appeal.



## Tigray Crisis: Population Movement Coordinated & Complementary Scale-up

Region	Partners	Scale-up plan
Afar and Amhara	IFRC, Austrian Red Cross, Netherlands Red Cross	IFRC will prioritize the scale-up (dependent on funding) of CVA and livelihoods assistance for 16,000 families (96,000 people); complemented by PGI, CEA and NSD support.
		Austrian Red Cross will support CVA interventions in North Wollo zone (and not targeted by IFRC) for 1,000 families (6,000 people)
		Netherlands Red Cross will continue focus on capacity strengthening (First Aid skills and kits) for selected branches in Amhara (not targeted by IFRC)
Benishangul-Gumuz	German Red Cross	German Red Cross support CVA interventions for 800 families (4,800) people and shelter and WASH for 400 families (2,400 people). This will target IDPs and host communities.
SNNPR	Swiss Red Cross, Netherlands Red Cross	Swiss Red Cross support CVA interventions for 1,000 families (6,000).
		Netherlands Red Cross support scaled-up Health/WASH interventions (water facility improvement and water quality need).



Acknowledging that the response inside Tigray region remains the lead domain of ICRC/ERCS; a coordinated approach has been taken to ensure that the collective and capacities of all Red Cross and Red Crescent Movement components

can be maximized. The principle guiding decision remains that Tigray is the mandate of ICRC, while IFRC will support ERCS in areas outside of Tigray, including surrounding regions. Respect for this delineation of roles and responsibilities remains unchanged.

**It should be noted that the FW Emergency Appeal also covers Djibouti and Sudan; but following consultation with the National Societies and pNS in these countries it was determined that a revision to their respective PoAs is not required at this time; and remain unchanged. For intervention strategy for these countries please refer to the [Emergency Appeal](#)**

## Needs assessment and targeting

The crisis in Tigray has aggravated an already dire humanitarian situation in Ethiopia. According to UNOCHA, more than 16 million people are now in need of humanitarian assistance throughout Ethiopia, including an estimated 5.2 million in the Tigray region<sup>1</sup>. In Afar, Amhara, Benishangul-Gumuz, Oromia, and SNNPR – areas neighbouring and/or outside of Tigray - besides dealing with displacement from Tigray, the scale and scope of needs is equally bad and worsening. However, with the attention of humanitarian organizations understandably on the Tigray crisis, populations living in neighbouring regions risk being underserved.

### Livelihoods and basic needs

Compounding impacts of climatic shocks, devastating desert locust infestation, the continued economic impact of COVID-19, and below-average rainfall projected for 2021, have led to a deterioration in food insecurity.

Locust-induced crop and pasture losses rendered fields bare and resulted in a reduction in available food for households reliant on both agricultural and agro-pastoral livelihood activities. "Belg" rains in central and eastern cropping areas, "Gu/Genna" rains in southern pastoral areas, "Diraac/Sugum" rains in northern pastoral areas have contributed to a reduction in household food production capacity as well as income. Macroeconomic challenges resulting in high inflation rates, increasing costs of food production and transportation, and exerting an upward pressure on consumer prices has compromised household purchasing capacity to meet the minimum food basket needs. Meanwhile, market functionality has been disrupted by the fighting with limited access to financial institutions and banks, thus affecting the cash flow.

The continued impact of COVID-19 has also exacerbated the situation, resulting in estimated loss of approximately 2.4 million jobs, and a correlating decline in income. With 2 million more people (conservatively) estimated at risk of falling into poverty<sup>2</sup>.

It is now estimated that 5.5 million people are facing acute food insecurity in Tigray and the neighbouring regions of Afar and Amhara, with 353,000 people in Catastrophic situation (IPC Phase 5). This is the highest number of people in this category since 2011 in Somalia; and based on the latest projections is expected to increase to 400,000 people by September 2021. There are also 2.1 million people in Emergency (IPC Phase 4) and 3.1 million in Crisis (IPC Phase 3). These indicators are alarming and necessitate a scale-up of response interventions that will alleviate the immediate basic needs of the affected population; as well as contribute to increasing medium- term food security.

Through the revised PoA, livelihoods and basic needs interventions will be prioritised over the next six months phase of the operation (July – December 2021) which will target 16,000 families (96,000 people) living in zones of Afar and Amhara regions that are adjacent to Tigray region experiencing Acute Food Insecurity. The following strategies will be considered.

- Immediate basic needs assistance is required to ensure survival and right access to food of for the affected population is not further compromised; nor the nutritional status of the most vulnerable such as children aged under five years old, lactating, and pregnant mother, the elderly and those living with a disability. The same groups who are also more at risk of getting seriously ill from COVID-19.

<sup>1</sup> [UNOCHA Situation Report 09 July 2021](#)

<sup>2</sup> [UN Socio-Economic Impact Assessment 31 March 2021](#)

Multipurpose cash transfers will be used as a short-term safety net approach to deliver this strategy and act as a short-term buffer against the multiple shocks faced by affected populations. Cash will be delivered using the ERCS' existing Financial Service Provider (FSP) - Commercial Bank of Ethiopia, which has reach in both Afar and Amhara regions; and has been successfully used in previous response operations in these areas. It will be delivered directly to recipient bank accounts. In cases where recipients do not have existing bank accounts, Commercial Bank of Ethiopia will visit the communities to facilitate this process and in collaboration with ERCS provide sensitization on how to access the cash assistance being provided by ERCS.

Targeted families will receive three monthly instalments of cash support based on the minimum expenditure basket (MEB). The MEB will be validated by a cash feasibility and market assessment and harmonised with the transfer value used by other cash actors in Ethiopia.

The IFRC and membership is represented in the CVA Working Group by the ERCS focal coordinators for CVA, IFRC Operations Office, and complimented by the Swiss Red Cross. Moreover, ERCS have conducted cash feasibility assessments in the Afar and Amhara regions, which will provide a basis for the scale up of interventions.

Alongside cash activities, ERCS will engage affected populations on complementary activities that support the utilisation of the cash received; this includes nutritional awareness, discussions on management of cash for example through sensitisation sessions with both women and men on the cash benefitting the entire household, ensuring that volunteers are aware of referral mechanisms between humanitarian organizations as well as public services and know how to make safe and confidential referrals (e.g. to SGBV case management, health, child protection, malnutrition etc.).

A risk analysis will be conducted, and mitigation measures implemented to ensure people's safe access to FSPs and markets as well as safety around their engagement in livelihoods activities.

- Increase food production capacity: To increase household food security resilience, support will be provided to strengthen the production capacity of the farmers through the provision of seeds, tools, and fertilizers or inputs for these items for the planting season. This will link the emergency relief aspects of food needs to early recovery and sustainably return to normal in the next harvest season.

Modality of support will depend on results of assessments and coordination with the respective authorities including the Ministry of Agriculture, and Regional Bureaus of Agriculture; as well as other actors (Food and Agriculture Organization etc.) but is expected to include:

- In-kind distribution of seeds, tools, and fertilizers in the proportion of equal to one acre per household;
- Distribution of same equivalent value in conditional cash (again using the existing FSP). ERCS will advocate for cash to be used for this component in areas where items are available in markets or suppliers state that they are able to deliver on the preferred (by the target group) items. ERCS will engage the affected populations in orientation sessions on the purpose of the cash for livelihoods, the benefits of investing in livelihoods inputs, as well as climate-sensitive agricultural practices and seeds harvesting.

Preliminary consultation with the Ministry of Agriculture has revealed that seeds are available in the local markets and there are Farmers Association's coordinated by the Ministry who stock and sell the stocks. Consultation with other RCRC partners, including ICRC confirmed they procure from the same associations. In coordination with Ministry of Agriculture, training will be provided as part of extension services for capacity development in best farming practices

The safety nets and livelihoods approaches will help protect the most vulnerable households against livelihoods risks and maintain an adequate level of food consumption. The strategy can furthermore prevent them from adopting damaging coping strategies and depleting their assets, such as the selling of land, tools, and/or livestock for food.

**Linkages will be created between the above interventions under the IFRC Zero Hunger Pan-African initiative to promote medium-term resilience of the people in the affected target areas.**

Where there are needs identified that are outside the available resources and/or expertise of ERCS, such as nutritional programming, infrastructural WASH etc. – advocacy will be done with local government and humanitarian organizations; as well as with pNS under the FW Emergency Appeal, to promote an integrated approach to the response.

**Protection, Gender, and Inclusion (PGI)**

Sexual and gender-based violence increases in situations of conflict, displacement and other emergencies and the situation is not different in Tigray and surrounding regions including Afar and Amhara. Food insecurity is a driver of protection issues that results in negative coping strategies including child labour, child marriages, sexual and gender-based violence, trafficking, sexual exploitation, and abuse.

PGI will therefore be mainstreamed throughout this intervention to ensure communities dignity, access, participation, and safety. As part of the need's assessment and analysis, a gender and diversity analysis will be included to understand and respond to individuals and groups in the affected community, based on their specific risks, needs and concerns, which will inform the operational strategy.

Due to limited information on PGI concerns there is need to look at possibility of conducting a PGI assessment in coordination with relevant authorities and NGOs on ground.

ERCS has very limited PGI capacity. There is need to recruit a full time PGI coordinator. The recruitment process has started and there is need to look at IFRC and other partners supporting the position to ensure sustainability which is critical in strengthening ERCS capacity in PGI and response in this operation.

Acknowledging that women, girls, men and boys with diverse ages, disabilities and backgrounds have very different needs, risk and coping strategies, there is a need to:

- Equip staff and volunteers with skills and knowledge on PGI, with more emphasis on practical application of the PGI minimum standards (Dignity, Access, Participation and Safety)
- Engaging other protection actors in Afar and Amhara to establish, strengthen and create awareness on the safe referral pathways
- Include SGBV messages and awareness including referral pathways in community sessions
- Ensuring all staff and volunteers in this operation receive briefings on PSEA and code of conduct and they sign the code of conduct
- Establish ERCS PGI working group for coordination and policy formulation in the longer term.
- Collection and analysis of Sex, age, and disability disaggregated data (SADDD) in ERCS operations.
- Integrating PGI in assessments and ensuring a gender and diversity analysis guides the operational strategy.
- PGI assessment in targeted zones in Afar and Amhara regions in coordination with relevant authorities and other NGOs
- Consult households on who to target as primary recipients and whether targeting women as primary recipients even in male-headed households is feasible. Women are often considered both primary caregiver and as the one responsible for cooking in the household and therefore seen as the more appropriate recipient of the cash. Women will be given an option on their preference to be targeted to ensure that they do not perceive this to come with specific risks for them. Through door-to-door verification, both men and women will be engaged in awareness activities related to targeting and sharing of the household burdens related to the cash (i.e. going to the markets, cooking, fetching water, engaging in livelihoods activities etc.)
- Integrating PGI in livelihoods and basic needs and WASH ensuring to meet the PGI minimum standards in emergencies. This will include the distribution of dignity kits (1,600 people).
- Coordinating with CEA in handling of sensitive complaints
- Recruit PGI coordinator in ERCS
- All sectors will seek to meet the PGI minimum standards in emergencies.

## Community Engagement and Accountability (CEA)

CEA will be integrated into the response interventions to ensure the engagement and involvement of all stakeholders including the community members of the affected populations. Communities will be consulted with at all stages of the response and be given opportunities to participate in and influence operational and programme decisions. In addition, two-way information sharing approaches will be used to inform community members about the operation including the selection criteria, distribution processes, participation/dialogue platforms, etc. to allow them to be included in decisions regarding targeting and selection of recipients for material assistance where this is relevant within the operation. This will be completed as part of the preparedness/set-up activity across the branches involved in the implementation of this PoA; and may include platforms such as community meetings, radio shows and/or social media depending on what the preferred and trusted communication channels of the communities are as well as their appropriateness to the context in the respective area. Community feedback and response systems will be established to listen to people's feedback, questions, and concerns about the response and the data will be analysed and discussed with communities to understand where improvements need to be made. Communities will be made aware of the established ERCS feedback system, how to use it as well as the role of the volunteers in the feedback system. Community will also be supported in establishment of community feedback committees for reliable and swift relay of information, feedback, and complaints.

Sensitive feedback will be handled through the referral pathways highlighted in the ERCS PSEA policy. Communication, and dissemination of Fundamental Principles will be a component of the CEA activities to ensure access and acceptance. To ensure the effective integration of CEA and accountability of the response, staff and volunteers will receive training on CEA and community feedback systems.

## National Society Development (NSD) in Emergencies

ERCS in its main auxiliary role to the Government of Ethiopia; and with sustained access through its localized structures, staff, volunteers, expertise, and logistics in place; has been uniquely placed to respond to the crisis. The National Society has been operational across northern Ethiopia, including inside Tigray and the surrounding regions since the onset of fighting in November 2020, and will continue to be called upon to respond.

Continued investment in the NS is required to ensure that can sustain the delivery of humanitarian services; and is strategically positioned to respond to new crises as they emerge. The IFRC through the FW Emergency Appeal will support the implementation of the Preparedness for Effective Approach (PER) that will provide a framework under which IFRC, pNS and ICRC can contribute to accordingly. This will be focused around the following areas:

**Human Resource capacity** strengthening to ensure that there is the available requisite expertise to deliver effective, efficient, and sustainable humanitarian services. This will include reinforcing capacities in areas such as CVA, Food Security and Livelihoods, HR, Logistics and Supply Chain, PGI, Operations Management and WASH. For continuous and sustainable skills capacity development, relevant trainings and refreshers will be provided for staff and volunteers. Where necessary, the IFRC in liaison with its membership and approval of ERCS will deploy rapid response personnel in specific technical areas to supplement the response.

**Branch Development** focused on capacity enhancement of strategically located branches in areas of Afar and Amhara; as well as in other regions as emerging crises, needs and priorities emerge, such as in Benishangul-Gumuz, which is a region of increasing concern, and SNNPR. This will entail a package of preparedness for response measures such as contingency planning, cash readiness (Red Ready), repositioning of NFIs and other assets, and warehouse management.

**Emergency Operation Centre (EOC)** capacity support. ERCS has a real-time emergency surveillance, data management and response coordination facility based in Addis Ababa. There is a need to extend this to Afar and Amhara regional offices, and elsewhere, through the installation of GPD, 255-inch screens and accessories, as well as provide user training on EOC software. For enhanced security the facility will also be equipped with CCTV for safety of equipment and assets invested. While for occupational safety the EOC will also be supplied with first aid kits and fire extinguishers. For 24-hour uninterrupted service a backup power generator is also planned to be installed.

**Digital transformation** (member/volunteer management): ERCS has developed a strategic plan for Digital membership and volunteer management system which will be supported through the procurement of the software, installation, user training and promotion. This will have strategic benefits to ERCS in their effort to increase the number and management of members, volunteers, and supporters; as well This will enable the automation of membership fee and donation collection; as well as dissemination of information on services and other issues of interest. Strengthening the engagement of members/volunteers is intended to improve acquisition, satisfaction, and retention among them; and this contribute to increased opportunity for resource member/volunteer led mobilization drives to generate funds for the NS. Volunteers involved in this response will be provided accidents insurance in the line of duty, personal protection equipment to minimise their exposures to COVID-19, as well as relevant trainings and refreshers to support them with the implementation of activities under this PoA.

Application of lessons learnt from operations/programming already being implemented, will also be considered to ensure a standardized support to the NS.

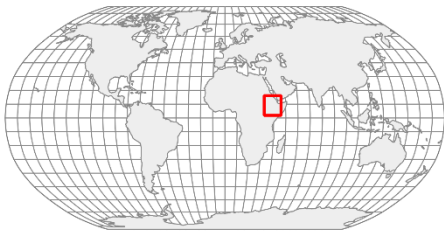
The above strategy is in accordance IFRC's One Country Plan initiative that provides the ERCS with a coordinated plan covering operations, and NSD related support.

## Targeting

The population targeted by this emergency operation has considered several factors:

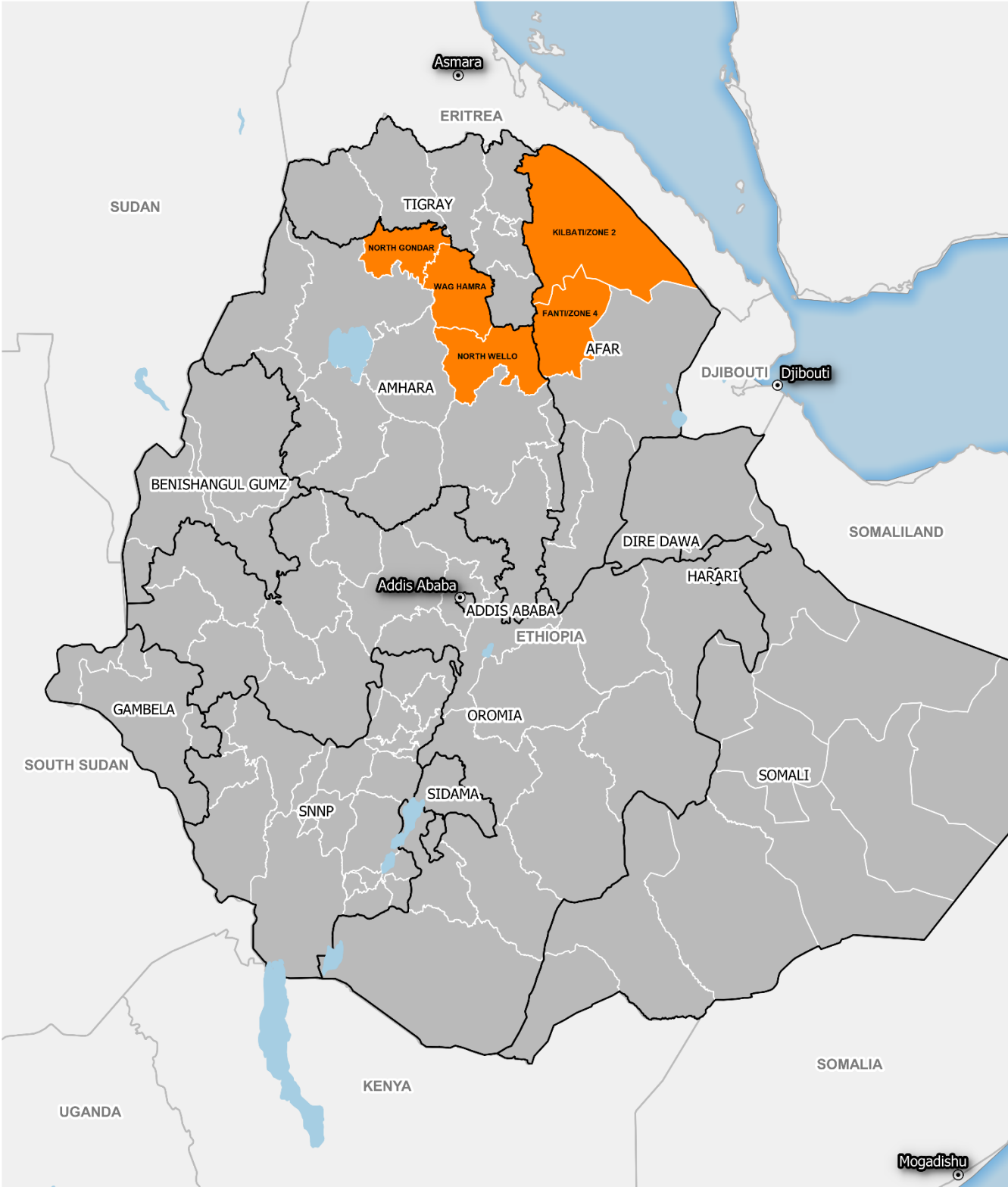
- Geographic targeting in affected areas outside Tigray region - namely zones/woreda in Afar, Amhara, Benishangul-Gumuz and SNNP regions that have been impacted by the cascading effects of the Tigray crisis. Under the revised PoA; populations targeted will be informed by [IPC Acute Food Insecurity analysis \(May - June 2021\)](#) - with prioritization now given to those experiencing IPC Phase 3 (Crisis) phase and above which are adjacent to the border with Tigray. This includes North Gondar zone, North Wello zone, and Wag Hamra zone in Amhara region, and Zone 4 (Fantana Rasu) and Zone 2 (Kilbet Rasu) in Afar region - see below map for more informaton. Cluster/woreda level targeting inside these zones will then be determined at operational implementation level in consultation with respective authorities, and in coordination with other present humanitarian organizations to ensure comprehensive coverage.
- Status of the vulnerability of the population and consequently the type of needs, with focus on IDPs, returnees (post IDPs) and host communities and,
- Multiple shocks that have affected the population of concern in addition to the armed violence. Priority targeting will be informed by appropriate Protection, Gender and Diversity assessment and analysis.
- With this considered, the total population of 355,000 including IDPs, returnees (post IDPs) and host communities will be targeted with DRR, Health, Livelihoods, and basic needs, MHPSS, NSD, PGI, Shelter and WASH interventions (under the FW Emergency Appeal (consolidated Secretariat and bilateral).

The evolving nature of the situation in Ethiopia warrants an adaptable approach so as not to limit scope; and ensure that the most urgent needs can be addressed. Therefore, to ensure that actions remain relevant to the changing context, the targeting strategy will be reviewed every 3-months against the latest assessment information to ensure that it remains relevant to the humanitarian situation, emerging needs and priorities

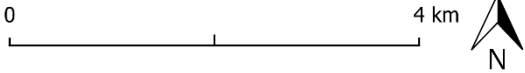


# Ethiopia : Population Movement

MDRTIGRAY • CE-2020-000229-ETH



The maps used do not imply the expression of any opinion on the part of the International Federation of the Red Cross and Red Crescent Societies or National Societies concerning the legal status of a territory or of its authorities.  
 Map data sources: GADM, ETH RC, IFRC. Map produced by: IFRC Africa Regional Office, Nairobi



## Scenario planning

Scenario	Humanitarian Consequence	Potential Response
<p><b>Scenario 1:</b> Security situation is stable with ceasefire holding. Populations in zones experiencing IPC Phase 3 and above in Afar and Amhara regions can access basic services and grow crops during the planting season.</p>	<ul style="list-style-type: none"> <li>• Food security situation improves for the affected population improves and there is a reduction in areas classified IPC Phase 3 and above.</li> <li>• Affected population livelihood assets are protected; and negative coping mechanisms mitigated.</li> </ul>	<ul style="list-style-type: none"> <li>• Response limited to interventions under this PoA – focused on provision of cash and voucher assistance for immediate term and seeds, tools, fertilizers, and other inputs for medium term impacts</li> </ul>
<p><b>Scenario 2:</b> Security situation is unstable ceasefire does not hold and there are sporadic armed clashes in Tigray and cross border incursions resulting in populations in adjacent zones in neighbouring Afar and Amhara experiencing challenges in access basic services and interruptions to accessing land to grow crops.</p>	<ul style="list-style-type: none"> <li>• Food insecurity worsens, with an increase in the affected population and areas classified IPC Phase 3 and above.</li> <li>• Reports of affected population selling livelihoods assets and resorting to other negative coping mechanisms</li> <li>• Increase in cases of acute malnutrition reported</li> <li>• Access by humanitarian organizations to affected populations and areas increasingly complex</li> </ul>	<ul style="list-style-type: none"> <li>• More humanitarian assistance required including extension of the PoA and Funding Requirement; as well as increased collaboration with ICRC in areas where access is more complex.</li> </ul>
<p><b>Scenario 3:</b> Security situation deteriorates, with persistent fighting in Tigray and increasing spill-over into adjacent zones in neighbouring Afar and Amhara region resulting in - internal displacement; suspension of basic services in some areas, and challenges in accessing land to grow crops.</p>	<ul style="list-style-type: none"> <li>• Food insecurity situation worsens with an exponential increase in the affected population and areas classified as above IPC 3 phase.</li> <li>• High prevalence of acute malnutrition (critical).</li> <li>• Access by humanitarian organizations to affected populations is interrupted and/or restricted due to insecurity.</li> </ul>	<ul style="list-style-type: none"> <li>• More humanitarian assistance required with adjacent areas of Afar and Amhara becoming under mandate of ICRC.</li> <li>• Revision of PoA and Funding Requirement required including pivoting of support to other regions where IDPs have settled, or communities have been impacted by the cascading effects of the Tigray crisis.</li> </ul>

## Risk Assessment

**Global COVID-19 pandemic:** This operation and its operational strategy considers the risks related to the current COVID-19 pandemic and is aligned with the IFRC Global COVID-19 Emergency Appeal that supports NSs to deliver assistance and support to communities affected or at risk of being affected by the COVID-19 pandemic. According to the [World Health Organization \(WHO\)](#), as of 14 July 2021, a total 277,318 COVID 19 cases have been registered with 4,349 deaths in Ethiopia. To date, the following measures have been taken to curb the spread of the disease: mandatory mask wearing, handwashing stations, using soap and water or alcohol hand rubs, setting up of COVID-19 screening sites,

setting up of testing and treatment centres; advocating with available risk communication resources, providing updated information regularly on the evolving COVID-19 situation. COVID-19 vaccine campaigns have been initiated with 2,077,549 people inoculated (as of 14 July 2021) which equates to < 2% of the overall population (approx. 112 million).

ERCS responses to COVID-19 are supported through the [IFRC Global COVID-19 Emergency Appeal](#), which is facilitating and supporting them to maintain critical service provision, while adapting to COVID-19 situation. This operation is aligned with and will contribute to the current global strategy and regional Emergency Plan of Action (4<sup>th</sup> Revision) for COVID-19 developed by the IFRC Africa Regional Office, in coordination with global and regional partners. This means that the NS will ensure COVID-19 prevention measures are adhered to, in line with regional EPoA and its national COVID-19 country plan. IFRC continues to assess how emergency operations in response to disasters and crisis should adapt to this crisis and provide necessary guidance to its membership on the same. ERCS will keep monitoring the situation closely and revise the plan accordingly if needed, taking into consideration the evolving COVID-19 situation and the operational risks that might develop, including operational challenges related to access to the affected population, availability of cash and livelihoods items, procurement issues, and movement of NS volunteers and staff as well as international staff. For more information, please consult the [COVID-19 Operations Page](#) on the IFRC Go platform.

Please refer to the below table, which indicates potential impact of the pandemic on this operation and how ERCS will respond to the situation in the event COVID 19 mitigation measures are made more stringent.

COVID-19 measures	Standard epidemic control measures	Temporary lockdown of society (schools, shops, public functions)	Complete lockdown and restriction of movement during implementation period
<b>Likelihood</b>	<b>High</b>	<b>Moderate</b>	<b>Low</b>
<b>Impact on operation</b>	No impact on ERCS operation will ensure to adhere to epidemic control measures in place.	The impact will be relatively low on this operation, as Government has opened its borders and the temporary lockdown has been lifted.  ERCS is also assured to be able to implement operation's response activities even in the event of temporary lockdown is imposed.	ERCS is able to carry on its activities as it is part of the presidential taskforce and has been given full access to move during any lockdown. The unlikely event of a complete lockdown is only possible if there is a drastic increase in the number of COVID-19 new infectious cases as well as deaths due to COVID-19 infection in the country.
<b>Mitigation measures</b>	As the epidemic control measures were already in place before crisis, the operation is designed to adhere to the measures.  Trainings will be conducted in small groups with due respect to social distancing measures and conducting virtually whenever feasible  Distribution of items and awareness raising exercises will be ensured	Same as under standard epidemic control measures. In addition, some delays might be experienced with procurements of some items. If this happens, a timeframe extension may be requested.	Health and hygiene promotion activities will be adjusted in line with any new measures that might come up.

	& physical distancing norms will be adhered to.		
--	---	--	--


Please refer to the published [Emergency Appeal](#) for more information on the Support Services that will facilitate the implementation of the PoA in Ethiopia.

**Escalation of fighting to operational areas supported under the FW Emergency Appeal:** The security situation in Ethiopia is fluid and shifting across regions as well as wide geographical areas. The latest escalation is in the border areas of Amhara and Tigray, while Afar shares a border with both. In case fighting in these areas worsens it will have consequence on the operation in terms of needs and priorities, as well as safety and security of ERCS staff and volunteers. While caution and management due diligence will be observed in the response, it is not expected that there will be cross border incursions from Tigray into Afar or Amhara as the areas of contention are South Tigray which are occupied by Amhara regional administration. In this regard the interventions planned under this PoA are not currently anticipated to be impacted, remain feasible, and within the mandate of IFRC.

It should be noted that IFRC under the FW Emergency Appeal has supported ERCS border branches in Amhara North and North Wollo with capacity trainings in first aid, PSS, PGI as well as provided of first aid kits in the onset of the Tigray crisis. Moreover, IFRC has also maintained the ambulances to date for response in both border branches.

## DETAILED OPERATIONAL PLAN

### STRATEGIC AREAS OF FOCUS

	<b>Shelter and Essential Household items</b> <b>People Reached: 20,225</b> Male: 9,303 Female: 10,922	
<b>Outcome 1: Communities in disaster and crisis affected areas restore and strengthen their safety, well-being and longer-term recovery through shelter and settlement solutions</b>		
<b>Indicators</b>	<b>Target</b>	<b>Actual</b>
% of assisted families report being satisfied with the assistance provided	90%	0
<b>Output 1.1: Shelter and settlements and basic household items assistance is provided to the affected families</b>		
<b>Indicators</b>	<b>Target</b>	<b>Actual</b>
# of HH reached with Shelter Kits (target 2,100 HH /10,500 people: 5,000 male 5,500 female)	10,500	26,070
# of HH reached with Household Items (target 2,100 HH /10,500 people: 5,000 male 5,500 female)	10,500	26,070
<b>Output 1.2: Technical support, guidance and awareness raising in safe shelter design and settlement planning and improved building techniques are provided to affected households</b>		
<b>Indicators</b>	<b>Target</b>	<b>Actual</b>
# of volunteers trained in shelter and distribution techniques (target: 60*)	60*	Cancelled
<b>Progress towards Outcome</b>		
The FW Emergency Appeal contributed through IFRC and bilateral pNS support to accomplish targets related to shelter and household items.		

A total of 4,035 IDP families (26,070 people) have been assisted with shelter and household items – this comprises 1,435 families in Gondar and North Wollo zones of Amhara region, who received support from IFRC; and 2,610 families in Afar and Amhara, who received support from the Netherlands Red Cross. The Post Distribution Monitoring has not been concluded at the time of this report; and will be conducted subsequently.

No structural shelter support was provided since the IDP families are hosted in public grounds hence support was limited to the provision of emergency shelter materials. ERCS volunteers have been involved in the distribution of emergency shelter items, but there was no immediate need to train them on safe shelter construction. Limited funding coverage on the FW Emergency Appeal has resulted in the prioritization of emergency shelter to meet the immediate needs of the IDP population. This support has therefore been cancelled.



### Livelihoods and basic needs

**People Reached: 24,896 people**

Male: 11,452

Female: 13,444

#### Outcome 2: Communities, especially in disaster and crisis affected areas, restore and strengthen their livelihoods

Indicators	Target	Actual
% of families are satisfied with the assistance provided (target 90%)	90%	0

#### Output 2.1: Basic needs assistance for livelihoods security including food is provided to the most affected communities

Indicators	Target	Actual
# of people reached with food items (target 36,667 people)	36,667	9,800
# of people who have access to Cash for Work opportunities (target: 7,500 people)	7,500	Cancelled

#### Output 2.2: Household livelihoods security is enhanced through food production, increased productivity, and post-harvest management (agriculture-based livelihoods)

# of families reached with LLH recovery support (target 16,000 families – increased under revised PoA for Phase July – December 2021)	16,000	0
---	--------	---

#### Output 2.3: Households are provided with multipurpose cash grants to address their basic needs.

Indicators	Target	Actual
# of households who receive multipurpose cash grants (target 20,580 HH / 123,480 people – increased under revised PoA for Phase July – December 2021)	20,580	2,516

#### Progress towards Outcome

The FW Emergency Appeal contributed through IFRC and bilateral pNS support to accomplish targets related to in-kind food and multipurpose cash assistance.

Total of 2,516 IDP families (15,096 people) have been assisted with multipurpose cash assistance – this comprises 1,466 families in Gondar and North Wollo zones of Amhara region, who received support from IFRC; and 1,050 families in SNNPR, who received support from the Swiss Red Cross. In both cases separate zone-specific feasibility and market assessments were completed, and the values of the minimum expenditure baskets differed from 3,000 ETB and 4,000 ETB across the regions, respectively. CVA assistance is the preferred intervention by IDP population according to assessments. Moreover, the Commercial Bank of Ethiopia which is the service provider

has good coverage with almost all Woredas having a branch (80% access). The markets were also identified to be equally functional and accessible to support the needs of the IDP population.

Total of 3,160 IDP families (9,800 people) have been assisted with in-kind food support – this comprises 1,160 families in Afar region who received support from Netherlands Red Cross; and 2,000 families in Benishangul-Gumuz and Amhara regions who received support from Finnish Red Cross.

Limited funding coverage on the FW Emergency Appeal has thus far meant that activities related to Cash for Work has not been advanced; and resulted in prioritization of multipurpose cash assistance to meet the immediate needs of the IDP population. This support has therefore been cancelled.

In this revised PoA (Phase July – December 2021) depending on funding received – there will be a scale-up of multipurpose cash assistance and food production capacity support through provision of production assets like seed, fertilizers, and tools. This intended to support farmers to meet their immediate basis needs and facilitate sustainable early recovery. A total of 16,000 families will be targeted (96,000 people) through these interventions; with targets revised accordingly.



## Health

**People Reached: 30,000 people**

Male: 13,800

Female: 16,200

### Outcome 1: The immediate risks to the health of affected populations are reduced

Indicators	Target	Actual
% trained volunteers have adequate technical knowledge in the targeted technical areas (target: 90%) or 100 volunteers	90%	100%

### Output 1.1: The health situation and immediate risks are assessed using agreed guidelines

Indicators	Target	Actual
# of volunteers trained in health-related topics (target: 100)	100	163
# of First Aid Kits procured and supplied	500	500
# of Emergency referral ambulances supported	20	21
# of people reached with PFA (target: Needs based)	Needs based	1,631
# of people reached with RCCE (Target: 150,000)	150,000	30,000

### Outcome 2: Transmission of diseases of epidemic potential is reduced

Indicators	Target	Actual
% of people attended report being better prepared to respond to epidemics. (target: 80%)	80%	0

### Output 2.1: Psychosocial support provided to the target population as well as to RCRC volunteers and staff

Indicators	Target	Actual
# people reached with community-based epidemic control and health promotion (target: 150,000)	150,000	30,000

### Outcome 3: Less severe cases of disease or malnutrition are treated in the community, with referral pathways for severe cases established

Indicators	Target	Actual
------------	--------	--------

% of referrals for malnutrition cases identified by the RCRC teams (Target: 100%)	100%	0
<b>Output 3.1: Acute malnutrition cases are managed in the community, with referral established for severe cases</b>		
<b>Indicators</b>	<b>Target</b>	<b>Actual</b>
% of referrals for malnutrition cases identified by the RCRC teams (Target: 100%)	100%	0
Screening and referral mechanism is in place (Target: Needs based)	Needs based	0
# of people referred for nutrition treatment (Target: Needs based)	Needs based	0
<b>Outcome 4: The psychosocial impacts of the emergency are lessened</b>		
<b>Indicators</b>	<b>Target</b>	<b>Actual</b>
# of people reached with PFA and PSS services (Target: needs based)	Needs based	7,500
# of people referred to specialized health services	Needs based	1,631
<b>Output 4.1: Psychosocial support provided to the target population as well as to RCRC volunteers and staff</b>		
<b>Indicators</b>	<b>Target</b>	<b>Actual</b>
# of volunteers providing PFA and PSS services (target: 100)	100	163
<b>Progress towards Outcome</b>		
<p>The FW Emergency Appeal contributed through IFRC and bilateral pNS support to accomplish activities related to health support.</p> <p>In Gondar and North Wollo branches in Amhara region, medical evacuation of civilians and casualties. Procurement of First kits and distribution; as well as training of volunteers in integrated First Aid (FA) and PSS were completed to strengthen the capacity of these branches. Total of 500 FA kits were procured, 163 volunteers received training.</p> <p>Trained volunteers proceeded to conduct RCCE, community-based health promotion and provide immediate Psychosocial First Aid (PFA) and Psychosocial support (PSS) to the IDP population and host communities. Total of 30,000 people were reached with RCCE/community-based health promotion. Onward referrals to health facilities were made for 1,631 people experiencing psychosocial trauma.</p> <p>ERCS had already prepositioned ambulances and the FW Emergency Appeal has facilitated the maintenance and running costs as well as their crew to keep them on the road. This has had favorable impact on the lifesaving needs of casualties of the fighting in the front line. Total of 21 ambulances were supported.</p> <p>Limited funding coverage on the FW Emergency Appeal has thus far meant that not all activities have been advanced. To accompany the scale-up of the livelihoods and basic needs assistance under this PoA; priority will be given to training of volunteers on nutrition, nutritional awareness of communities, and establishing referral mechanisms for identified cases of malnutrition among the targeted population (under Health Outcome 3).</p>		



## Water, sanitation, and hygiene

**People Reached: 0**

Male: 0

Female: 0

**Outcome 1: Immediate reduction in risk of waterborne and water related diseases in targeted communities**

Indicators	Target	Actual
# of target population that has access to sufficient safe water (target: 73,333)	73,333	Pending funding
# of target population using adequate sanitation (target: 73,333)	73,333	Pending funding
<b>Output 1.1: Daily access to safe water which meets Sphere and WHO standards in terms of quantity and quality is provided to target population</b>		
Indicators	Target	Actual
# of people who benefit from provision of safe drinking water (Target: 73,333)	73,333	Pending funding
# of water systems constructed and rehabilitated (Target: TBC)	TBC	Pending funding
<b>Output 1.2: Adequate sanitation which meets Sphere standards in terms of quantity and quality is provided to target population</b>		
Indicators	Target	Actual
# of people reached with sanitation services (target: 73,333 people)	73,333	Pending funding
# of latrine cubicle/stances constructed and rehabilitated (target: TBC)	TBC	Pending funding
# of hygiene facilities constructed in camps (target: TBC)	TBC	Pending funding
<b>Output 1.3: Adequate sanitation which meets Sphere standards in terms of quantity and quality is provided to target population</b>		
Indicators	Indicators	Indicators
# of people who receive support to maintain good hygiene (target: 73,333 people)	73,333	Pending funding
# of households reached with WASH items (target;)	TBC	Pending funding
# of people reached with hygiene promotion messaging (target;)	TBC	Pending funding
<b>Progress towards Outcome</b>		
<p>Limited funding coverage on the FW Emergency Appeal has thus far meant that WASH related activities have been advanced. To accompany the scale-up of the livelihoods and basic needs assistance under this PoA; priority will be given to advocating for resources to implement complementary WASH interventions and/or to local government as well as other humanitarian organizations to promote an integrated approach to the response.</p>		



## Protection, gender, and inclusion

**People Reached: 24,270**

Male: 11,164


Female: 13,106

**Outcome 1: Communities become more peaceful, safe, and inclusive through meeting the needs and rights of the most vulnerable.**

**Output 1.1: Programmes and operations ensure safe and equitable provision of basic services, considering different needs based on gender and other diversity factors.**

Indicators	Target	Actual
% of staff and volunteers trained on PGI minimum standards (target 100%)	100%	163
% of sectors that mainstream PGI minimum standards (target 100% - 55,000 people)	100%	40%
# of assessments including PGI with a gender and diversity analysis to inform operational strategy	100%	-

# of people reached through PGI services	55,000	24,270
# of people reached with dignity kits (target; 1,600 people, included for under revised PoA for Phase July – December 2021)	1,600	0
Collection and analysis of sex-age and disability-disaggregated data	TBC	-
<b>Output 1.2: Programmes and operations prevent and respond to sexual- and gender-based violence and other forms of violence especially against children.</b>		
<b>Indicators</b>	<b>Target</b>	<b>Actual</b>
# of staff and volunteers trained on prevention and response to SGBV (target: 100 volunteers)	100	163
# of community engagements /awareness sessions including SGBV sessions/ messages (target: TBC)	TBC	Pending funding
Identification and sharing of information on safe referral pathways with communities, staff and volunteers in Afar and Amhara (target: needs based)	TBC	Pending funding
Printing and distribution of IEC materials on SGBV to be used in awareness sessions (TBC)	TBC	Pending funding
# of child friendly spaces actively providing services (Target: Needs based)	Needs based	Pending funding
<b>Progress towards Outcome</b>		
<p>Total of 163 volunteers were trained on PGI minimum standards in the Gondar and North Wollo branches in Amhara region. The volunteers were engaged in the response (Secretariat component) in delivering the activities planned including CVA and distribution of shelter and household items. PGI was mainstreamed in the sectors of shelter and livelihoods especially in the targeting criteria where PGI needs were considered as special needs among the population in the same situation. Total of 24,270 people have benefited from PGI services through the FW Emergency Appeal.</p> <p>Limited funding coverage on the FW Emergency Appeal has thus far meant that not all activities have been advanced accompany the scale-up of the livelihoods and basic needs assistance under this PoA; priority will be given to mainstreaming PGI in the activities planned – this will include strengthening the capacity of ERCS through conducting of ToR trainings of staff and volunteers on PGI in NHQ, and Afar and Amhara regional branches, among other interventions.</p> <p>Under the FW Emergency Appeal, the recruitment of an ERCS PGI coordinator has started. This will be a FW resource funded by IFRC, Austrian and Swiss Red Cross; however there remains a need to secure longer term funding to ensure sustainability of this position in ERCS.</p>		

	<p><b>Disaster Risk Reduction</b></p> <p><b>People Reached:</b> Male: 0 Female: 0</p>	
<b>Outcome 1: Communities in high-risk areas are prepared for and able to respond to disaster</b>		
<b>Indicators</b>		
# of branches and communities prepared to respond to disasters (Target 5 branches 10 communities)	5 branches, 10 communities	Pending funding
<b>Output 1.1: Communities take active steps to strengthen their preparedness for timely and effective response to disasters.</b>		
<b>Indicators</b>	<b>Target</b>	<b>Actual</b>

# of people community plans of action developed (target 1)	1	Pending funding
<b>Outcome 2: Community awareness raising programmes on climate change risks and environmentally responsible practices are conducted in target communities</b>		
<b>Indicators</b>	<b>Target</b>	<b>Actual</b>
% of communities that report an improvement on the living environment through incorporation of climate related actions (target: TBC)	TBC	Pending funding
<b>Output 2.1: Contributions to climate change mitigation are made by implementing green solutions.</b>		
<b>Indicators</b>	<b>Target</b>	<b>Actual</b>
# of climate related actions tested and rolled out (target 1)	1	Pending funding
# of volunteers trained in VCA, and CCA (Target: 82)	82	Pending funding
<b>Output 2.2: Community awareness raising programmes on climate change risks and environmentally responsible practices are conducted in target communities</b>		
<b>Indicators</b>	<b>Target</b>	<b>Actual</b>
# of countries implementing the FbF program (Target 1)	1	-
<b>Progress towards Outcome</b>		
<p>Limited funding coverage on the FW Emergency Appeal has thus far meant that DRR related activities have been advanced. To accompany the scale-up of the livelihoods and basic needs assistance under this PoA; priority will be given to increasing support for branch development activity – including a package of preparedness actions to ensure they are able to sustain service delivery and respond to emerging crises, priorities and needs.</p>		

## ENABLING ACTIONS

<b>Strengthening National Societies</b>		
<b>Outcome S1: National Society capacity building and organizational development objectives are facilitated to ensure that National Societies have the necessary legal, ethical and financial foundations, systems and structures, competences and capacities to plan and perform</b>		
<b>Indicators</b>	<b>Target</b>	<b>Actual</b>
# of insured volunteers adequately supported (target 100)	100	163
<b>S1.1.4: National Societies have effective and motivated volunteers who are protected</b>		
<b>Indicators</b>	<b>Target</b>	<b>Actual</b>
# of RCRC volunteers mobilized and protected (target 100)	100	125
# of RCRC volunteers receiving relevant trainings and ToTs to support scale up/implementation of activities (included under revised PoA for Phase July – December 2021)	100	0
<b>Output S1.1.6: National Societies have the necessary corporate infrastructure and systems in place</b>		
<b>Indicators</b>	<b>Target</b>	<b>Actual</b>
# of National societies that have appropriate NSD plans (Target:1)	1	1
# branches to receive installation of membership and volunteer digital management infrastructure (target: 3, included for under revised PoA for Phase July – December 2021)	3	0

# of staff trained in software user package (target: 10, included for under revised PoA for Phase July – December 2021)	10	0
<b>Output S1.1.7: NS capacity to support community-based disaster risk reduction, response and preparedness is strengthened</b>		
<b>Indicators</b>	<b>Target</b>	<b>Actual</b>
% of HNS and pNS satisfied with the IFRC services provided (target 100%)	100%	TBC
<b>Outcome S2.1: Effective and coordinated international disaster response is ensured community-based disaster risk reduction, response and preparedness is strengthened</b>		
<b>Indicators</b>	<b>Target</b>	<b>Actual</b>
# of National Societies conducted PER assessment (target 1)	1	0
# of branches networked with EOC (target: 4, included for under revised PoA for Phase July – December 2021)	4	0
# of branches with established EOC standard operating procedures (target: 4, included for under revised PoA for Phase July – December 2021)	4	0
<b>Output S2.1.1: Effective and respected surge capacity mechanism is maintained.</b>		
<b>Indicators</b>	<b>Target</b>	<b>Actual</b>
# of surge deployed (target)	6	6
<b>Output S2.1.3: NS compliance with Principles and Rules for Humanitarian Assistance is improved</b>		
<b>Indicators</b>	<b>Target</b>	<b>Actual</b>
# of feedback system set up (target:1)	1	1
<b>Progress towards Outcomes</b>		
<p>The ERCS branches were strategic for the response they share borders with Tigray and was the route which where the fighting started as well as the reception for casualties and IDPs. The two branches of Gondar and North Wollo in Amhara region mobilized volunteers; and the FW Emergency Appeal has supported their engagement (allowances) and FA and PSS training of the volunteers. The FW Emergency Appeal also allocated resources for any injury or effect of the fighting on volunteers. Thankfully no ERCS volunteer casualty was reported. No satisfaction survey was conducted.</p> <p>To ensure delivery of humanitarian services can be sustained; priority will be given to increasing support for NSD in emergencies – namely training and ToTs for staff and volunteers, EOC networking in targeted branches, and digital transformation of improved member/volunteer management ding a package of preparedness actions to ensure they are able to sustain service delivery and respond to emerging crises, priorities and needs.</p> <p>Under the FW Emergency Appeal, the recruitment of a IM / PMER officer has started. This position will be embedded in the IFRC Operations Office to support the coordination of FW monitoring, data collection and reporting.</p>		



## C. Financial Report

*[Please attach the financial report and in addition please provide a narrative summary as follows:]*

- *Detail the funding requirements vs the income that came into the operation.*
- *Explain if there any variances in operating budget vs expenditure.*

## Contact information

For further information, specifically related to this operation please contact:

### In the Ethiopian Red Cross (ERCS)

- **Secretary General** Getachew Ta'a, Email: [ercs.sg@redcrosseth.org](mailto:ercs.sg@redcrosseth.org),
- **Deputy Secretary General, Disaster Risk Management:** Engida Manfredo, Email: [engida.mandefro@redcrosseth.org](mailto:engida.mandefro@redcrosseth.org)

### In the IFRC

- **IFRC Country Delegation** Surein Peiris, Senior Partnership and Resource Development Advisor, Email: [surein.peiris@ifrc.org](mailto:surein.peiris@ifrc.org) phone:+254 732 878 716
- **IFRC Regional Office for Africa** Adesh Tripathee, Head of DCPRR, Nairobi, Kenya; phone +254731067489; email: [adesh.tripathee@ifrc.org](mailto:adesh.tripathee@ifrc.org)

### For IFRC Resource Mobilization and Pledges support:

- **IFRC Regional Office for Africa** Louise Daintrey-Hall, Head of Partnerships and Resource Development Regional Office for Africa, Email: [louise.daintrey@ifrc.org](mailto:louise.daintrey@ifrc.org) phone: +254 110 843978

### For In-Kind donations and Mobilization table support:

- **Logistics Coordinator** Rishi Ramrakha, Head of Africa Regional Logistics Unit, email: [rishi.ramrakha@ifrc.org](mailto:rishi.ramrakha@ifrc.org); phone: +254 733 888 022

### For Performance and Accountability support (planning, monitoring, evaluation and reporting enquiries)

- **IFRC Regional Office for Africa** Philip Kahuho, PMER Manager, [Philip.kahuho@ifrc.org](mailto:Philip.kahuho@ifrc.org), Phone: +254 732 203081

## Reference documents



Click here for:

- [Previous Appeals and updates](#)

## How we work

All IFRC assistance seeks to adhere to the **Code of Conduct** for the International Red Cross and Red Crescent Movement and Non-Governmental Organizations (NGO's) in Disaster Relief and the **Humanitarian Charter and Minimum Standards in Humanitarian Response (Sphere)** in delivering assistance to the most vulnerable. The IFRC's vision is to inspire, encourage, facilitate and promote at all times all forms of humanitarian activities by National Societies, with a view to preventing and alleviating human suffering, and thereby contributing to the maintenance and promotion of human dignity and peace in the world.

<sup>i</sup> Ethiopia: IPC Acute Food Insecurity Analysis May - September 2021, Issued June 2021 - Ethiopia | ReliefWeb

<sup>ii</sup> Ethiopia: IPC Acute Food Insecurity Projection July - September 2021

# Emergency Appeal

## INTERIM FINANCIAL REPORT

Selected Parameters			
Reporting Timeframe	2020/11-2021/6	Operation	MDRTIGRAY
Budget Timeframe	2020/11-2021/6	Budget	APPROVED

Prepared on 16 Jul 2021

All figures are in Swiss Francs (CHF)

### MDRTIGRAY - Tigray Crisis - Population Movement

Operating Timeframe: 18 Nov 2020 to 26 Jul 2022; appeal launch date: 24 Jan 2021

## I. Emergency Appeal Funding Requirements

Thematic Area Code	Requirements CHF
AOF1 - Disaster risk reduction	841,000
AOF2 - Shelter	898,000
AOF3 - Livelihoods and basic needs	813,000
AOF4 - Health	1,618,000
AOF5 - Water, sanitation and hygiene	1,985,000
AOF6 - Protection, Gender & Inclusion	378,000
AOF7 - Migration	626,000
SFI1 - Strengthen National Societies	688,000
SFI2 - Effective international disaster management	1,313,000
SFI3 - Influence others as leading strategic partners	142,000
SFI4 - Ensure a strong IFRC	94,000
<b>Total Funding Requirements</b>	<b>9,396,000</b>
<b>Donor Response* as per 16 Jul 2021</b>	<b>801,991</b>
<b>Appeal Coverage</b>	<b>8.54%</b>

## II. IFRC Operating Budget Implementation

Thematic Area Code	Budget	Expenditure	Variance
AOF1 - Disaster risk reduction	675,687	441,042	234,644
AOF2 - Shelter	533,326	375,874	157,452
AOF3 - Livelihoods and basic needs	7,058	54,349	-47,291
AOF4 - Health	25,665	110,574	-84,908
AOF5 - Water, sanitation and hygiene	41,037	66,451	-25,414
AOF6 - Protection, Gender & Inclusion	0	0	0
AOF7 - Migration	0	0	0
SFI1 - Strengthen National Societies	13,118	45,433	-32,315
SFI2 - Effective international disaster management	18,118	18,118	0
SFI3 - Influence others as leading strategic partners	332	332	0
SFI4 - Ensure a strong IFRC	15,355	16,411	-1,056
<b>Grand Total</b>	<b>1,329,696</b>	<b>1,128,584</b>	<b>201,112</b>

## III. Operating Movement & Closing Balance per 2021/06

Opening Balance	0
Income (includes outstanding DREF Loan per IV.)	1,691,376
Expenditure	-1,128,584
<b>Closing Balance</b>	<b>562,792</b>
Deferred Income	0
Funds Available	562,792

## IV. DREF Loan

* not included in Donor Response	Loan :	906,154	Reimbursed :	0	<b>Outstanding :</b>	<b>906,154</b>
----------------------------------	--------	---------	--------------	---	----------------------	----------------

# Emergency Appeal

## INTERIM FINANCIAL REPORT

Selected Parameters			
Reporting Timeframe	2020/11-2021/6	Operation	MDRTIGRAY
Budget Timeframe	2020/11-2021/6	Budget	APPROVED

Prepared on 16 Jul 2021

All figures are in Swiss Francs (CHF)

### MDRTIGRAY - Tigray Crisis - Population Movement

Operating Timeframe: 18 Nov 2020 to 26 Jul 2022; appeal launch date: 24 Jan 2021

#### V. Contributions by Donor and Other Income

Opening Balance							0
Income Type	Cash	InKind Goods	InKind Personnel	Other Income	TOTAL	Deferred Income	
British Red Cross	192,491				192,491		
DREF Allocations				906,154	906,154		
Japanese Red Cross Society	42,880				42,880		
On Line donations	870				870		
Red Cross of Monaco	43,871				43,871		
Swedish Red Cross	108,323				108,323		
The Canadian Red Cross Society	101,115				101,115		
The Netherlands Red Cross (from Netherlands Govern	275,671				275,671		
Turkish Red Crescent Society	20,000				20,000		
<b>Total Contributions and Other Income</b>	<b>785,222</b>	<b>0</b>	<b>0</b>	<b>906,154</b>	<b>1,691,376</b>	<b>0</b>	
<b>Total Income and Deferred Income</b>					<b>1,691,376</b>	<b>0</b>	